



BRIGHAM AND WOMEN'S HOSPITAL

A Teaching Affiliate of Harvard Medical School

November 4, 2011

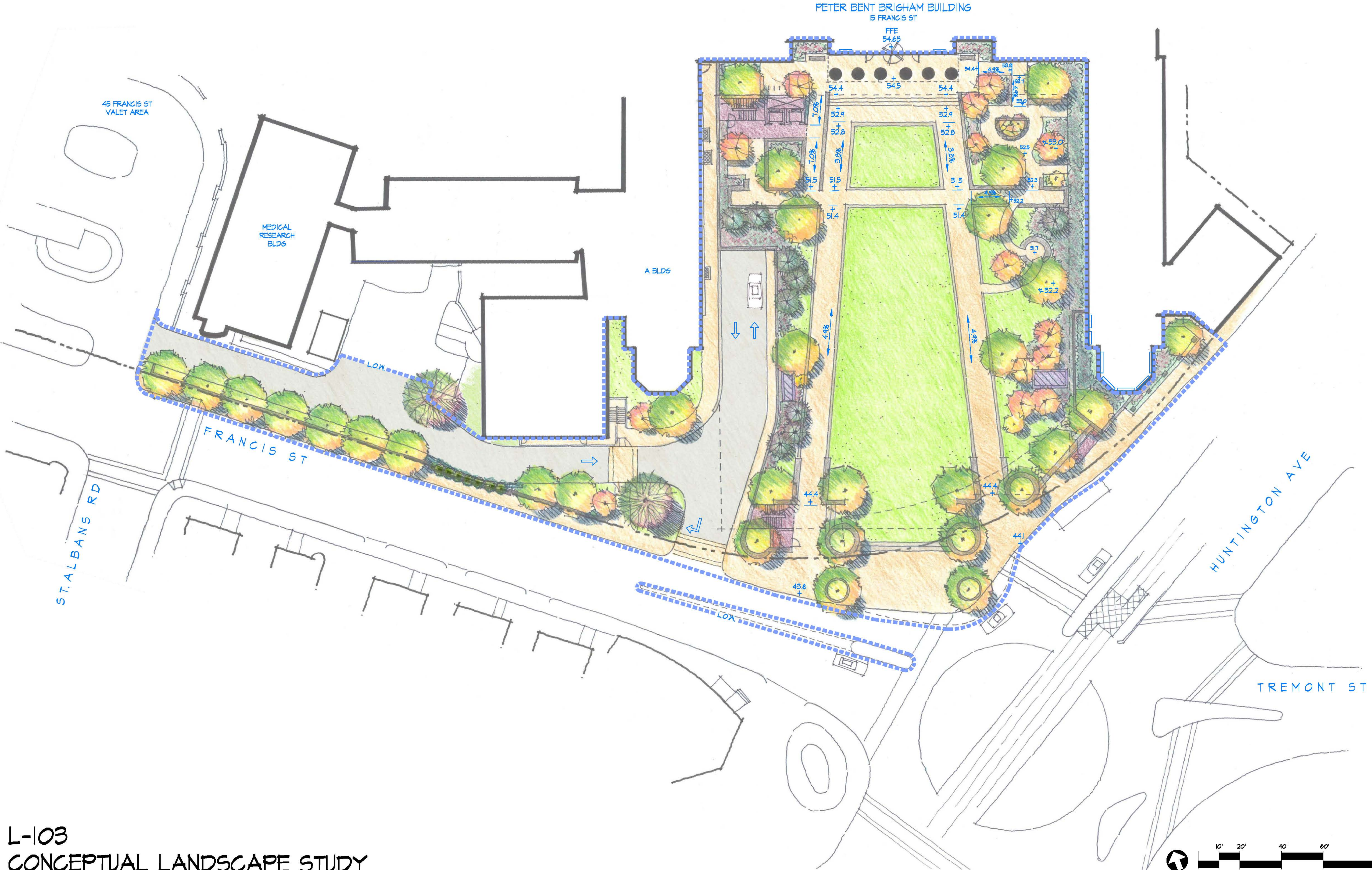
Brigham and Women's Hospital (BWH) is now moving forward with the Patient Parking Garage at Brigham Green. This project was approved under BWH's 2005 Institutional Master Plan with a construction start anticipated for 2008, but delayed due to the financial crisis.

BWH has selected Walsh Brothers Inc. to lead a Design Build Team consisting of HDR Architecture, Simon Design Engineering, RDK Engineers, and McPhail Associates, along with Halvorson Partnership and Vanasse Hangen & Brustlin.

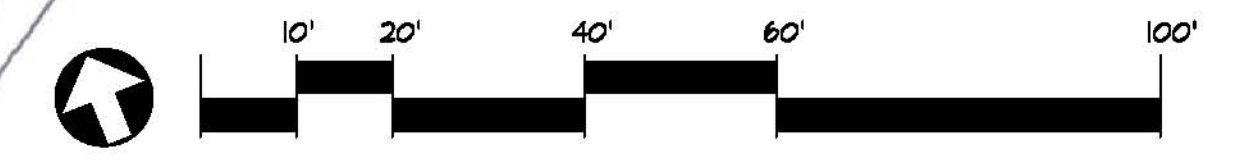
The project consists of a 400 car underground garage capped with a green space amenity and an internal roadway connecting the garage to 45 Francis Street. The internal roadway will be used to shuttle vehicles to the garage, thereby helping to ease traffic on Francis Street. The return trip from the garage to 45 Francis will be along Francis Street.

Design is underway for the garage and the green space amenity, as well as enabling projects.

Construction is anticipated to start in the Spring of 2012, and run until final completion in the Spring of 2014.



L-103
 CONCEPTUAL LANDSCAPE STUDY
 BRIGHAM GREEN DESIGN STUDY



HALVORSON DESIGN PARTNERSHIP
 LANDSCAPE ARCHITECTURE
 REVISED OCTOBER 31, 2011



