



Slide 1

Vizon di Design di Boston
Design pa un Boston Diversifikadu
Virtual Open House
November 2, 2023



Scan this QR Code to access the online survey

Or

- 1. Visit slido.com and
- 2. Use **# bostondesignvision** to join as a participant



The QR Code is the same for all questions. The questions will automatically be updated as we go through the virtual open house.

Slide 2

-

slido

Hello & Welcome!

Tell Us About Yourself!



Tell us your name and which neighborhood you are from!

① Click **Present with Slido** or install our [Chrome extension](#) to activate this poll while presenting.

Slide 3

Hello & Welcome

Tell us About Yourself

Tell us your name and which neighborhood you are from!

Tonight's Agenda

- (15 min) **Welcome**
What is a Design Vision for the City of Boston?
- (60 min) **Draft Innovations**
 - Public Space** The Street and Park
SHARE YOUR IDEAS!
 - Domestic Realm** The Home and The Porch
SHARE YOUR IDEAS!
 - Places of Commerce** The Square and The Shops
SHARE YOUR IDEAS!
- (10 min) **What's Next?**

Slide 4

Tonight's Agenda

Urban Design is...



Slide 5

Urban Design is...

The art of making places for people.

It is at the intersection of buildings, open spaces, art, transit, businesses, storefront activation, and more that influences how people experience the city everyday.



Boston is anchored by history, culture, identity, and people.

There are narratives and lived experiences that are not reflected in the identity of Boston.

These narratives and lived experiences should be uplifted and centered to expand what defines Boston.

Slide 6

Boston is anchored by history, culture, identity, and people.

There are narratives and lived experiences that are not reflected in the identity of Boston.

These narratives and lived experiences should be uplifted and centered to expand what defines Boston.

Unaffordable Housing & Displacement



About 65 percent are renters, and more than half put upwards of 30 percent of their income toward rent



Many people of color to head out of the city and settle in more affordable locations.

Slide 7

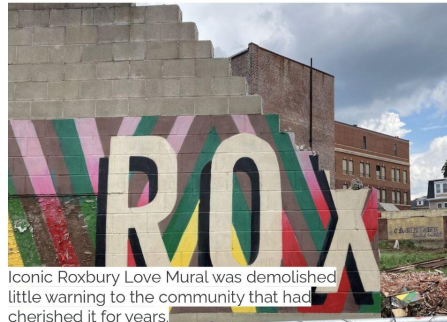
Unaffordable Housing & Displacement

About 65 percent are renters, and more than half put upwards of 30 percent of their income toward rent.

Many people of color to head out of the city and settle in more affordable locations.

Erasure of Cultural Infrastructure

Growth does not have to be about loss and erasure. It is an opportunity to think about ways to grow and value social and cultural infrastructure to create/preserve a sense of belonging and identity in neighborhoods.



Iconic Roxbury Love Mural was demolished little warning to the community that had cherished it for years.

Slide 8

Erasure of Cultural Infrastructure

Growth does not have to be about loss and erasure. It is an opportunity to think about ways to grow and value social and cultural infrastructure to create/preserve a sense of belonging and identity in neighborhoods.

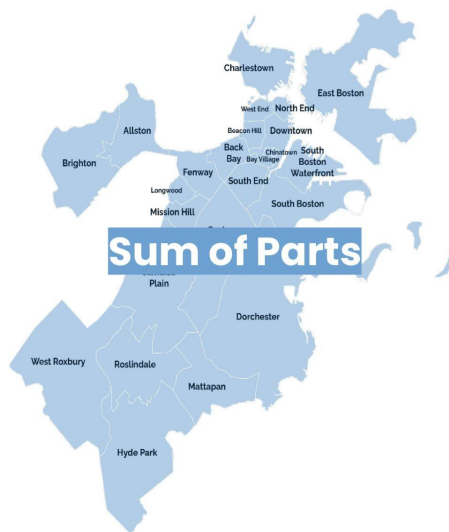
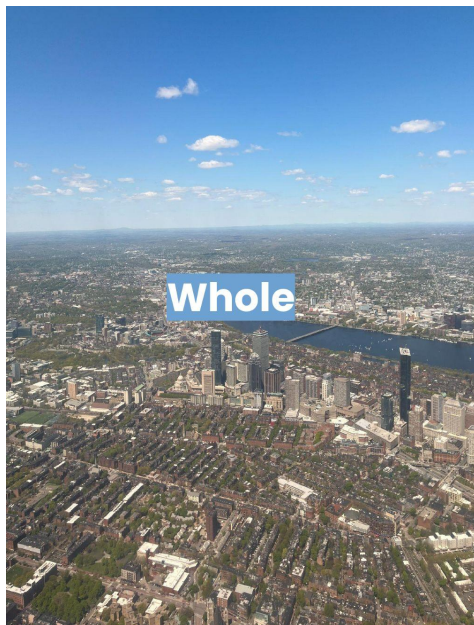
Key Finding #1

Boston is inherently diverse, but more as a whole.

Slide 9

Key Finding #1

Boston is inherently diverse, but more as a whole



Slide 10

Whole

Sum of Parts

Key Finding #2

Boston's unique urban history and form means squares and corridors are a key focus.

Slide 11

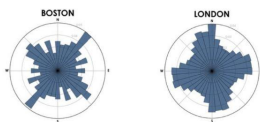
Key Finding #2

Boston's unique urban history means squares and corridors are a key focus.

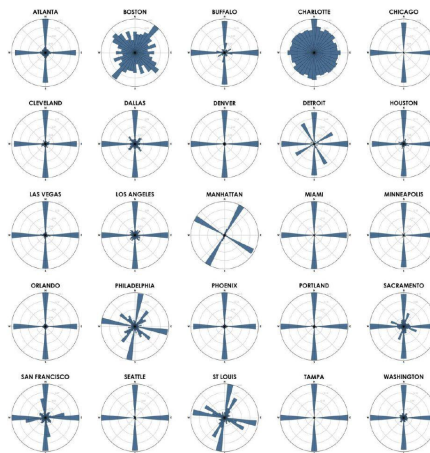
Boston's street grid is unlike any other city in the USA

- Boston's streets do not follow a consistent set of directions, which creates a unique sense of (dis)orientation and variation
- The city has pockets of different grids that don't align with each other
- Boston's village-like structure is more conducive to non-auto forms of transportation
- Most closely related city is London

Source: [Boston Globe \(2018\)](#)



City Street Network Orientation



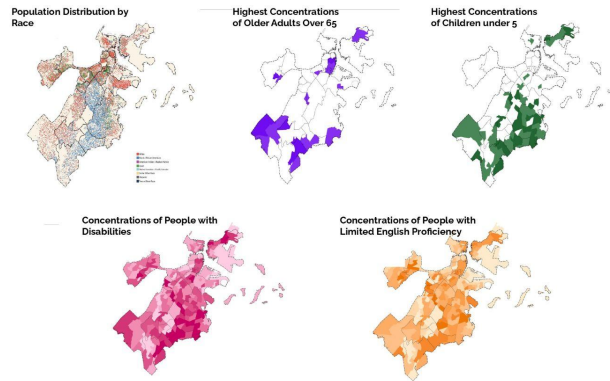
Slide 12

Boston's street grid is unlike any other city in the USA

- Boston's streets do not follow a consistent set of directions, which creates a unique sense of (dis)orientation and variation
- The city has pockets of different grids that don't align with each other
- Boston's village-like structure is more conducive to non-auto forms of transportation
- Most closely related city is London

A Design Vision Must Consider...

Demographics vary across communities



Source: [Analyze Boston](#) (from 2020 US Census & Climate Ready Boston (2016))

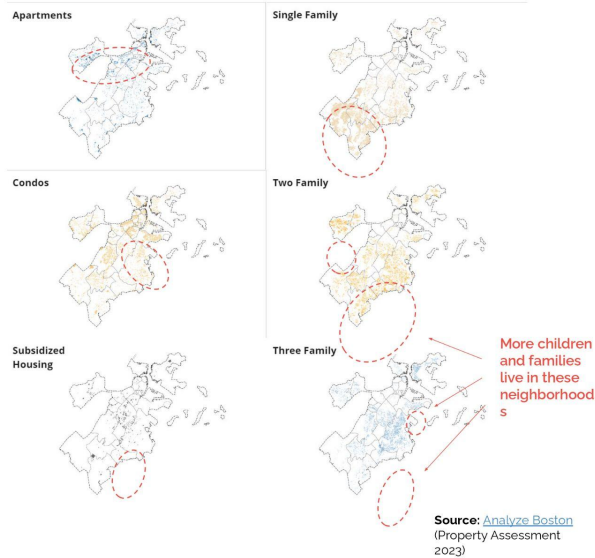
Slide 15

A Design Vision Must Consider...
Demographics vary across communities

A Design Vision Must Consider...

Varied communities require different housing needs

 Largest Concentrations



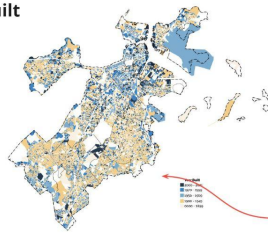
Slide 16

A Design Vision Must Consider...
Varied communities require different housing needs

A Design Vision
Must Consider...

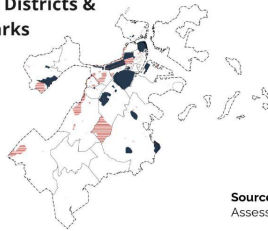
**Historic
preservation
needs to
accommodate
the city's aging
buildings**

Year Built



In the next 25
years, nearly all
of the buildings
in yellow will be
100+ years old

Historic Districts &
Landmarks



Source: [Analyze Boston](#) (Property
Assessment 2023)

Slide 17

A Design Vision Must Consider...

Historic preservation needs to accommodate the city's aging buildings

Key Finding #4

We can learn from
diversity that is already
shaping the city.

Slide 18

Key Finding #4

We can learn from diversity that is already shaping the city.



Slide 19
 Symbolic
 Everyday

Design Can Anchor Identities & Belonging



Slide 20
 Design Can Anchor Identities & Belonging



Every Bostonian should see themselves represented in the buildings and outdoor spaces that define the city.

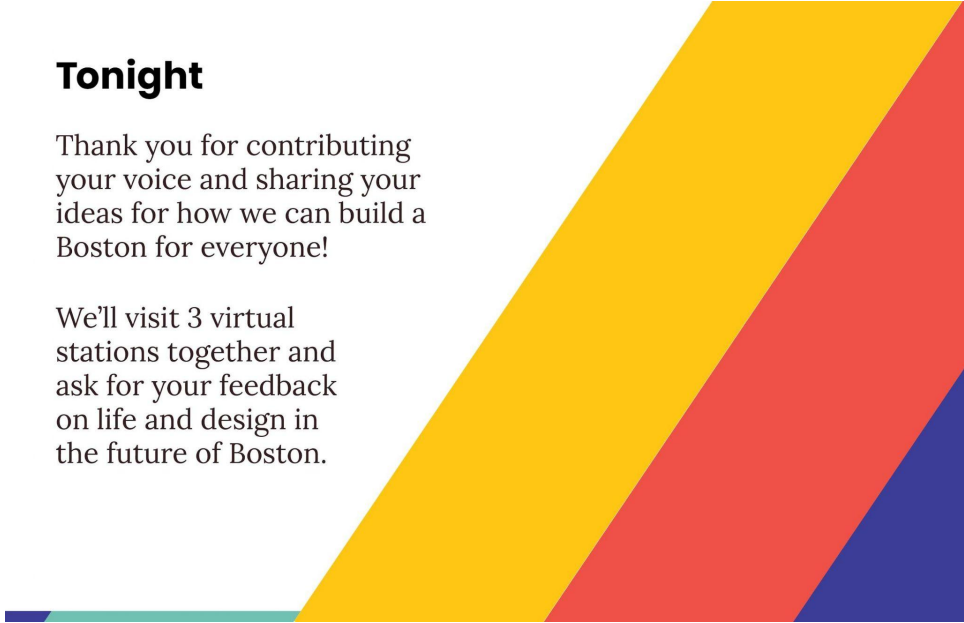
Slide 21

Tudu morador di Boston debe ser riprizentadu na prédius y na spasus stirior ki ta difini sidadi.

Tonight

Thank you for contributing your voice and sharing your ideas for how we can build a Boston for everyone!

We'll visit 3 virtual stations together and ask for your feedback on life and design in the future of Boston.

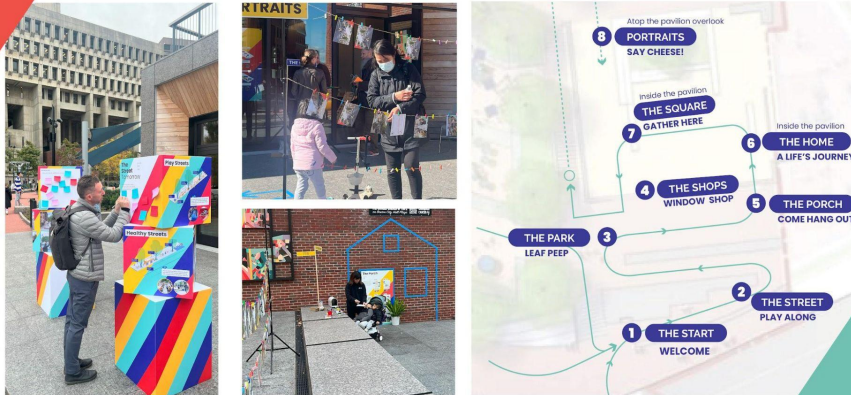


Slide 22

Tonight
Obrigadu pa bu kontribuison, através di bu vós y di bus ideia di módi ki nu pode konstrui un Boston pa tudu algen.
Vizita 3 stason

Open House at the Civic Pavilion

October 20 & 23



Slide 23

Open House at the Civic Pavilion
October 20 & 23



Slide 24

PART 1 - Public Space
Ruas
Parkis

The Street

La calle
街道
街道



The Boston Design Vision recommends building on today's patterns of use with design, care, and craft.



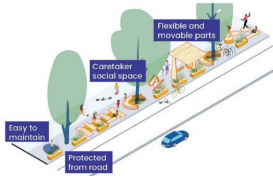
Slide 25

Ruas

The Boston Design Vision recommends building on today's patterns of use with design, care, and craft.

The Street

Play Street



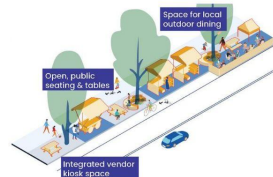
Green Street



Chill Street



Commerce Street



Healthy Street



Open Street

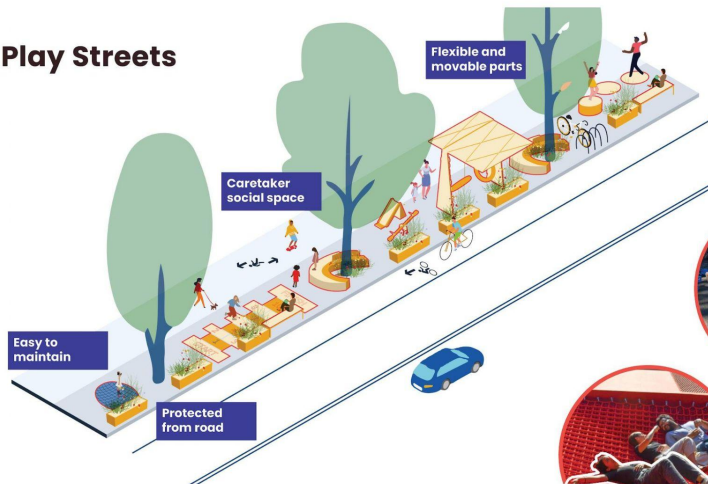


Slide 26

Ruas

Rua di Lazer, Rua Verdi, Rua di Rilaxa
Rua di Kumérsiu, Rua Saudável, Rua Abértu

Play Streets



Incorporate play elements for a wide range of ages to better accommodate youth and families who need to move along and linger on city streets.

Slide 27

Rua di Lazer

Inkorpora iliméntus di lazer pa un grandi variedadi di idadis, pa akomoda midjor jóvens y famílias ki meste sirkula y fika paradu na ruas di sidadi.

Chill Streets



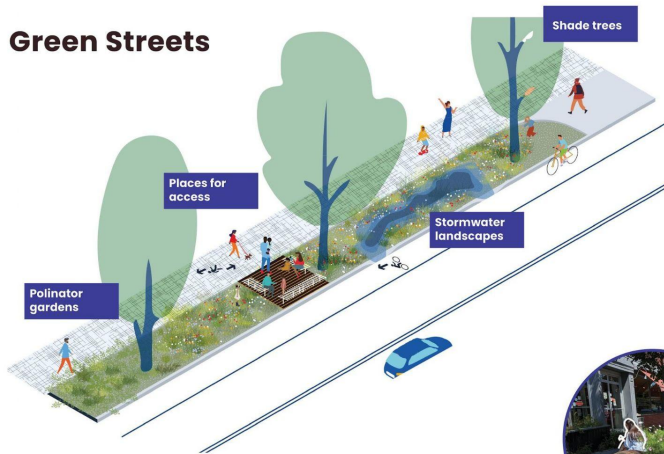
Embrace the reality of “down time” by creating spaces where lingering, gathering, and loitering are welcome, comfortable, and social.

Slide 28

Rua di Rilaxa

Abrasa putensial di “ténpu livri”, kriandu spalus undi pesoas pode fika paradu, riuni y pâsia.

Green Streets



Plant trees and landscapes that mitigate the heat island effect via shade trees, pollinator and stormwater gardens, and other sustainable features.



Slide 29

Rua Verdi

Kria plantason ki ta riduzi ifeitu di ilha di kalor di nos ruas atravêš di plantason di arvis ki ta da sônbra, polinizadoris, órtas di águ di txuba, y otus karakterístika sustentável.

Commerce Streets



Design streets with spaces for street markets, vendors, and spill out from groundfloor uses to create great shopping and dining streets.



Slide 30

Rua di Kumérsiu

Aumenta oportunitadís pa merkadus di rua, bendedoris y utilizasons di Rés-di-txon, pa kria grandís rua kumersial.

Healthy Streets



Slide 31

Rua Saudável

Utiliza ruas di sidadi komu lugaris di jinástika, saúdi y ben-star, ku séntrus di mobilidadi, stasons pa akese y rifreska, y iliméntus di *parkour*.

Open Streets



Slide 32

Rua Abértu

Splora putensial di ruas fitxadu tenpuráramenti, féstas di zóna y békus, pa ten más spasu abértu na kurtu prazu.

The Park

El parque
公園
公園

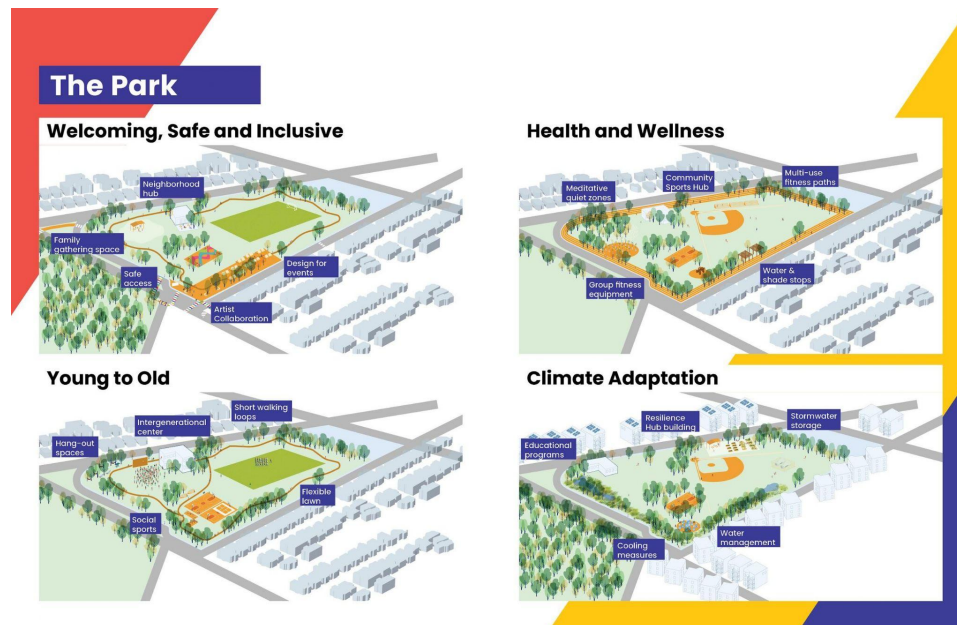
The Boston Design Vision is exploring ways to diversify the accessibility, programming, and community benefits of Boston's parks and open spaces.



Slide 33

Parkis

Vizon di *design* di Boston sa ta splora putensial di alarga asésu, programason y binifisius kumunitáriu di parkis y spasus abértu di Boston.



Slide 34

Parkis

Akolhedor, Siguru y Inkluzivu, Saúdi y Ben-star
Nóbu y Bédju, Adaptason a Klima

Welcoming, Safe and Inclusive



Make parks and open spaces more accessible and welcoming to everyone through design.

Slide 35

Akolhedor, Siguru y Inkluzivu

Bira parkis y spalus abértu más asesível y akolhedor pa tudu algen, atravês di *design*.

Health and Wellness



Grow the health and wellness benefits of parks and open spaces with a particular emphasis on mental health.

Slide 36

Saúdi y Ben-star

Aumenta saúdi y ben-star di parkis y spalus abértu, ku atenson spisial na saúdi mental.

Young to Old



Slide 37

Nóbu y Bédju

Oferese mensajen, programason y ekipaméntus ki ta apoia moradoris di “8 a 80” anu – ker dizer, di tudu idadi y kapasidadi.

Climate Adaptation



Slide 38

Adaptason a Klima

Diversifika y adapta parkis y spalus abértu di Boston a alterason klimátiku di sidadi, inkluidu ku stratéjias di rizisténsia a kalor y a inundason.

slido



What do you think of these ideas for Boston's streets?

① Click **Present with Slido** or install our [Chrome extension](#) to activate this poll while presenting.

Slide 39

Kuzê ki bu atxa di kes ideia li?

slido



How do you use... Boston's streets to hang out and gather with others?

① Click **Present with Slido** or install our [Chrome extension](#) to activate this poll while presenting.

Slide 40

Módi ki bu ta uza ruas di Boston pa konvive y riuni ku otus algen?

slido



How do you use Boston's Parks?

① Click **Present with Slido** or install our [Chrome extension](#) to activate this poll while presenting.

Slide 41

How do you use Boston's Parks

slido



What ideas do you have for how parks and open space can better contribute to the health and wellbeing of Bostonians?

① Click **Present with Slido** or install our [Chrome extension](#) to activate this poll while presenting.

Slide 42

Ki ideias bu tene pa módi ki parkis y spasmus abértu pode kontribui midjor pa saúdi y ben-star di moradoris di Boston?

PART 2 – Domestic Realm

The Home

The Porch

Slide 43

PART 2 - Domestic Realm

Kaza

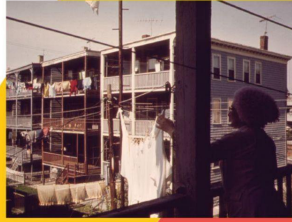
Varandas



Slide 44

Kaza

What is a Boston Home?



Domestic Culture

Cultura Doméstica
Guóneī wénhuà

Slide 45

Domestic Culture

Glass in a cityscape lacks personality and warmth... History has to be taken into consideration. Materials make places accessible to certain people or not.

- Imari Paris Jeffries

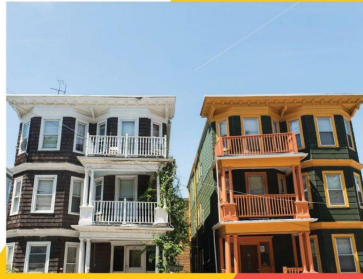
Slide 46

Vidru nun paizajen urbanu ka ten personalidadi nen kalor... Stória ten ki lebadu en konsiderason. Matiriais ta poi lugaris asesível a sértus pesoas, ô nau

- Imari Paris Jeffries



Origins



Local Interpolation

Slide 47

-

We are very much connected and hence telling a story of one person is not reflective of the whole community. We are a diverse community on the east coast. People have to push and the inclusive story has to be told.

- Amira Madison

Slide 48

Nos é mutu ligadu, purisu stória di un algen ka ta rifleti kumunidadi interu. Nos é un kumunidadi diversifikadu na kósta lésti. Pesoas ten ki sfora y stória inkluzivu ten ki ser kontadu

- Amira Madison

Bostonian Households

Bostonians shared their diverse family and household arrangements through MadLibs.



Large families with many children
Extended families and/or temporary relative stays

I live with my *mom, dad, sister, brother, grandmother, dog*
In a 3 bedroom apartment

I live with my *brother, sisters, mom, & step-dad*
In a very clean house

I live with my *self*
In a loft

I live with my *dog and plants*
In a condo in Norwood because I couldn't afford Boston



Single working professionals

I live with my *Brothers & Grand-dad*
In an apartment



Seniors who wish to age in place
Households with supportive needs

I live with my *roommates (senior citizens)*
In a senior citizen home



Intergenerational household with grandparents who help with childcare

I live with my *4 roommates*
In 2 family home



Students and roommates shares

Slide 49

Bostonian Households

Bostonians shared their diverse family and household arrangements through MadLibs.



Origins

Courtyards

Local Interpolation

Slide 50

Courtyards



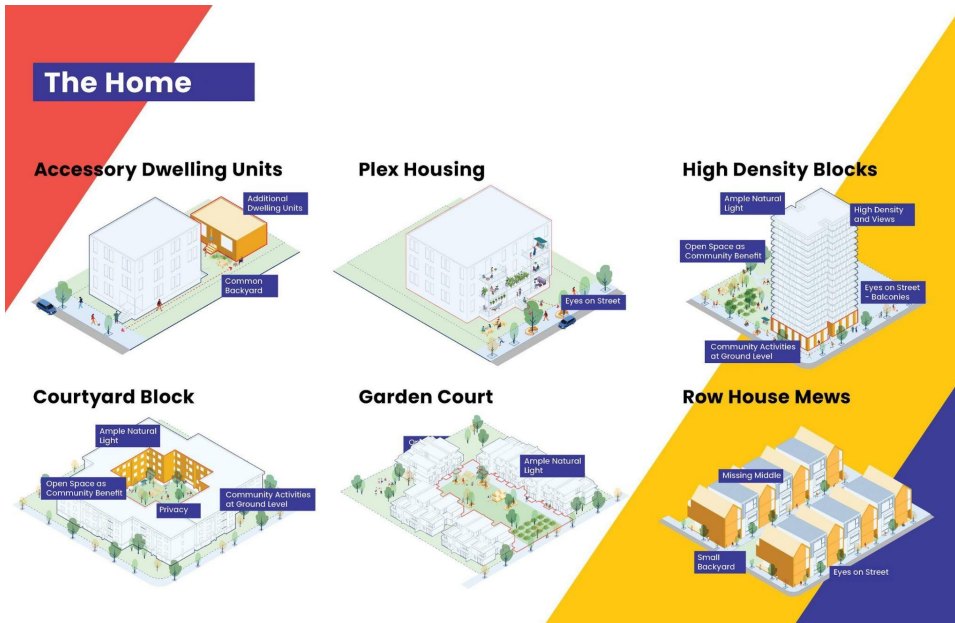
Origins

Flexibility and Expandability

Local Interpolation

Slide 51

Fleksibilitadi y kapasidadi di spanson



Slide 52

Kaza

Unidadi di abitason asesóriu

Abitason Plex

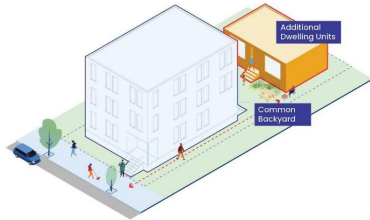
Blókus di altu densidadi

Blókus ku pátiu

Pátius ku jardin

Kazas jeminadu (mews)

Accessory Dwelling Units



Northwood ADU, Ann Arbor MI

Slide 53

Unidadis di abitason asesóriu

Row House Mews

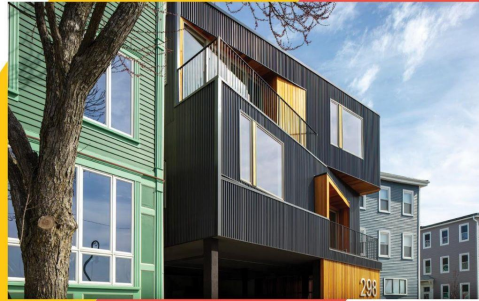
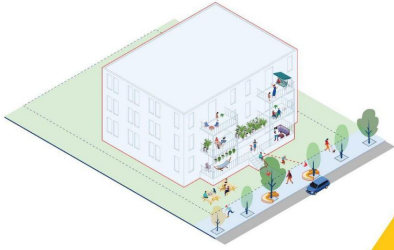


Brush Park Carriage Homes, Detroit MI

Slide 54

Kazas jeminadu (*mews*)

Plex Housing

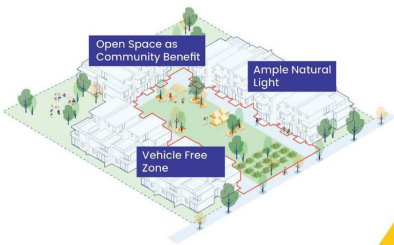


Marginal Street 7-Plex, East Boston MA

Slide 55

Abitason *Plex*

Garden Court

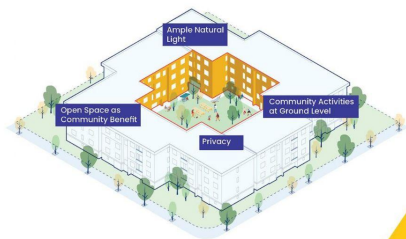


Tillamook Row, Portland OR

Slide 56

Pátius ku jardin

Courtyard Block

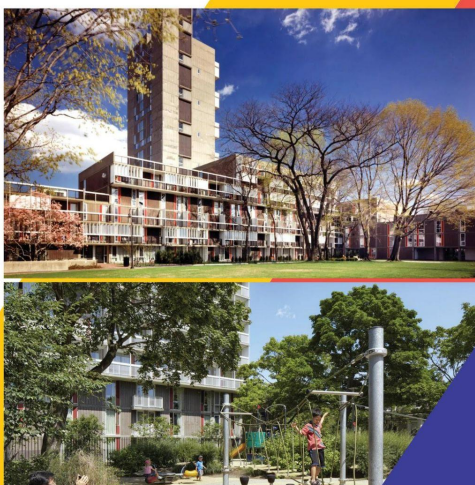


Piano Craft Building, Lower Roxbury MA

Slide 57

Blókus ku pátiu

High Density Block



Peabody Terrace, Cambridge

Slide 58

Blókus di altu densidadi

The Porch

El porche
門廊
門廊

The Boston Design Vision is testing a variety of ways to encourage design that fosters community and enables individuality, particularly in the transition between public and private spaces.



Slide 59

Varandas

Vizon di *design* di Boston sa ta testa un variedadi di maneras di utiliza stratéjias di *design* ki ta prumove kumunidadi, partikularmenti na spasus di tranzison entri spasus públiku y privadu.

Each building has a uniqueness that is born out of place. Moving into the future, people need to reflect *into* their built environment.

- Ifeoma Ebo

Slide 60

Kada prédiu ten un singularidadi ki ta nase di lugar. Na futuro, pesoas ten ki rifleti sobri ses ambienti konstruídu.

- Ifeoma Ebo



Origins

Porches, Stoops, and Balconies

Local Interpolation

Slide 61

Porches, Stoops and Balconies

The Porch



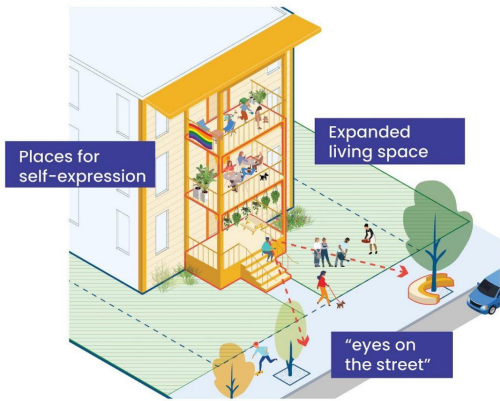
Slide 62

The Porch

Varandas, Parapetu

Jardins, *Stoops* (skadinhas frenti kaza), Side Yard

Porches



Common to Boston's existing housing, porches allow for flexible outdoor space, "eyes on the street," personalization and provide for swing season use.

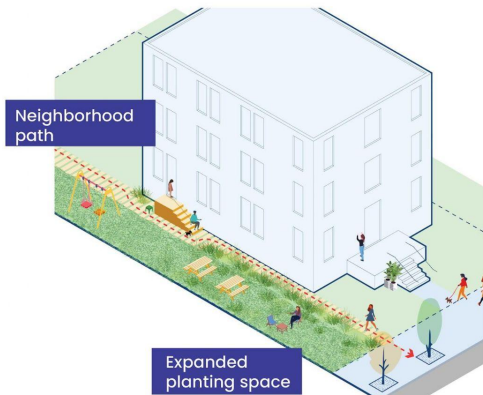


Slide 63

Porches

Common to Boston's existing housing, porches allow for flexible outdoor space, "eyes on the street," personalization and provide for swing season use.

Side Yard



Wider sideyards or thru-block lots offer space for semi-private or shared open space, neighborhood cut-throughs, and private gardens.



Slide 64

Side Yard

Wider side yards or thru-block lots offer space for semi-private or shared open space, neighborhood cut-throughs, and private gardens.

Gardens



From neighborhood planting programs to food production, garden spaces are a great way to maximize beauty, productivity and community.



Slide 65

Jardins

Désdi programas di plantason di zóna a órtas kumunitáriu, spasus di jardinajen é un manera ótimu di maksimiza beléza, prudutivadadi y kumunidadi.

Stoop



Long a hallmark of great urban neighborhoods, stoops offers human-scaled spaces that directly address and foster life of the street.

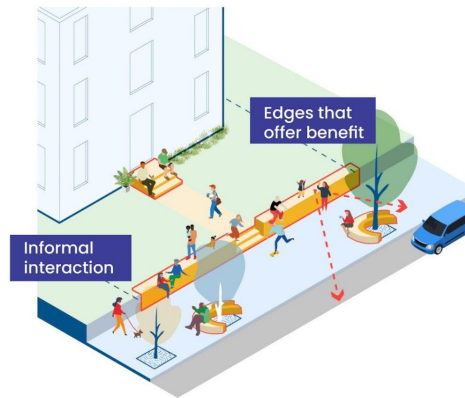


Slide 66

Stoops (skadinhas frenti kaza)

Dja dura ki *stoops* é un karakterístika di zónas urbanu, y es ta oferese spasus di skala umanu ki ta prumove y ta lida dirétamenti ku vida na ruas.

Ledges



Various changes in topography and site walls around the city can offer ledges and perches for sitting and resting.



Slide 67

Parapetu

Várius mudansa na topograifa y paredis di sidadi pode oferese parapetu y lugaris pa xinta y diskansa.

slido



What type of home is your dream home?

① Click **Present with Slido** or install our [Chrome extension](#) to activate this poll while presenting.

Slide 68

Módi k'é bu kaza di sonhu na...?

slido



What does your dream home look, feel, sound, smell, and taste like? Who lives there?

① Click **Present with Slido** or install our [Chrome extension](#) to activate this poll while presenting.

Slide 69

Kal k'é aspétu, sensason, son, txeru y gostu di bu kaza di sonhu? Kenha ki ta mora na bu kaza di sonhu?

slido



What memories do you have that took place on a porch, a stoop, a balcony, a side lot or in a front garden?

① Click **Present with Slido** or install our [Chrome extension](#) to activate this poll while presenting.

Slide 70

Ki mimórias bu ten ki kontise nun skadinha frenti kaza, nun varandinha di andar diriba, nun lóti di ladu ô nun jardin di frenti?

PART 3 – Places of Commerce

The Shops

The Square

Slide 71

PART 3 - Places of Commerce

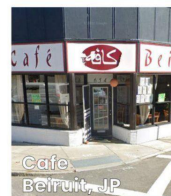
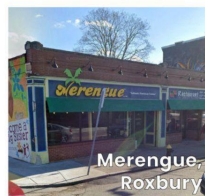
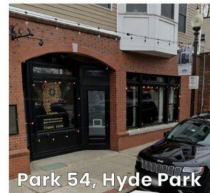
Lójas

Prasas

The Shops

Las tiendas
商店
商店

The Boston Design Vision looks to build on a valued aspect of Boston neighborhoods noted in community feedback to date - the fine-grained texture of local, small and diverse ground floor businesses and uses.



Slide 72

Lójas

Vizion di *design* di Boston ta tenta dizenvolve un aspétu valiozu di zónas di Boston, obzervadu na kumentáriu di kumunidadi ti gósi – kel testura finu di stabelesiméntus kumersial y utilizasóns lokal, pikinóti y diversifikadu.



Origins

Retail Amenities (Healthcare, Daycare, etc.)

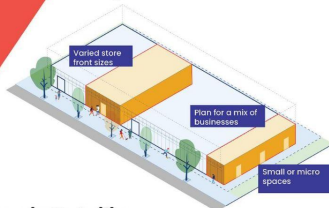
Local Interpolation

Slide 73

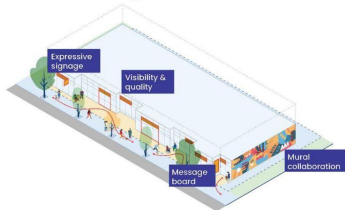
Retail Amenities (Healthcare, Daycare, etc.)

The Shops

Retail Diversity



Care in Detailing



Fine-grained Storefronts



Inside / Outside



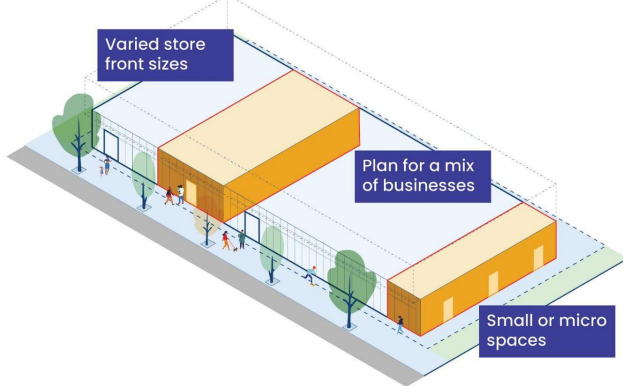
Slide 74

Lójas

Diversidadi di Kumérsiu a Retalhu, Móntras di Kualidadi

Kuidadu na Ditalhis, Intirior / Stírior

Retail Diversity



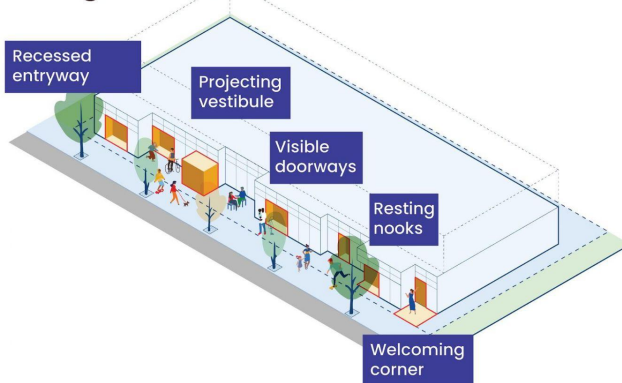
Work toward design that allows for a range of ground floor and retail uses and scales - from large footprint businesses to small businesses and incubators.

Slide 75

Diversidadi di Kumérsiu a Retalhu

Insentiva *design* ki ta pirmiti un variedadi di utilizasons y skalas na rés-di-txon y kumérsiu a retalhu – inkluidu stabelesiméntus kumersial grandi y pikinóti y inkubadoras.

Fine-grained Storefronts



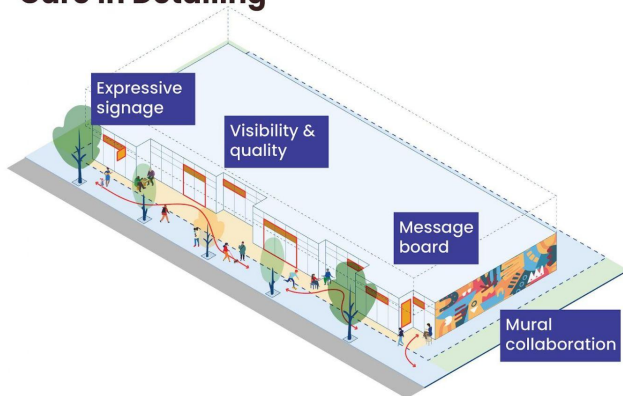
Identifying the design features that make for a great experience along a building - from elements that create visual interest to porous edges.

Slide 76

Móntras di Kualidadi

Identifika karakterístikas di *design* ki ta propursiona un ótimu spiriénsia nun prédiu – désdi iliméntus ki ta kria interesi vizual ti bórdas permeável.

Care in Detailing



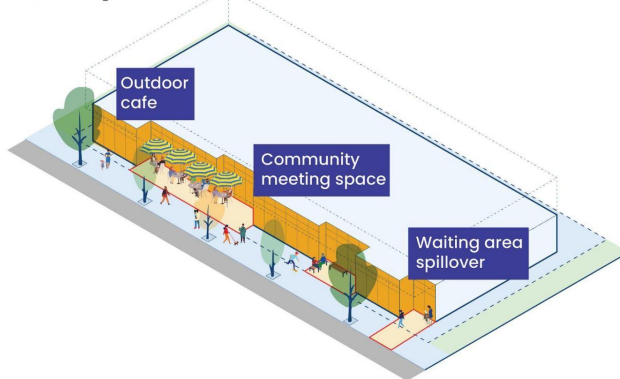
Describe the specific details that provide a quality visual and physical experience, from signage and window glazing to materials and spacing.

Slide 77

Kuidadu na Ditalhis

Diskreve ditalhis spisífiku ki ta prupursiona un spiriénsia vizual y fíziku di kualidadi, désdi sinalizason y vidrus di janélas ti matiriais y spasaméntu.

Inside / Outside



Exploring the barriers and opportunities to enlivening the sidewalk along storefronts, from spill-out cafes to sidewalk shopping.

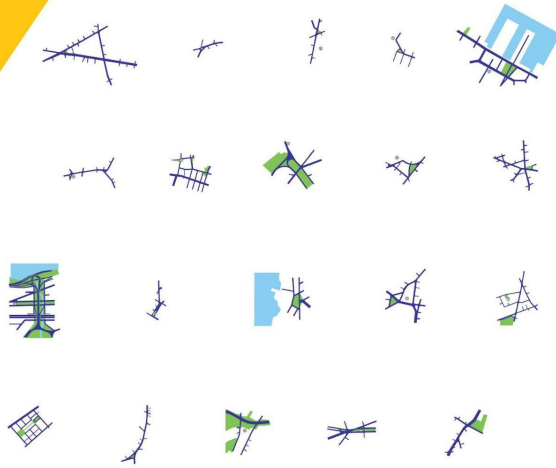
Slide 78

Intirior / Stirior

Splora bareras y opurtunidadis di anima paseiu au longu di móntras, désdi kafés ti lójas na paseius.

Boston Squares

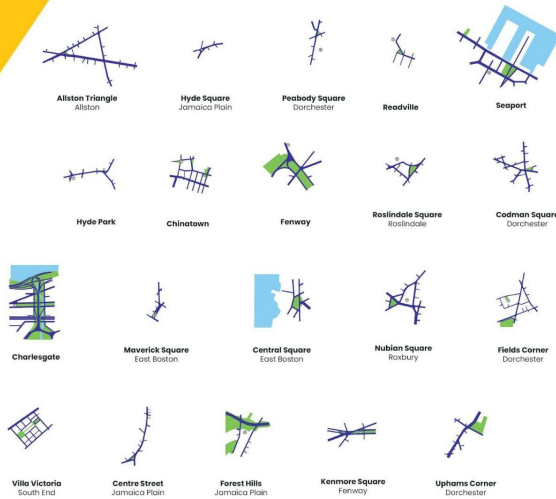
Plazas de Boston
 波士頓廣場
 波士頓廣場



Slide 79
 Boston Prasad

Boston Squares

Plazas de Boston
 波士頓廣場
 波士頓廣場



Slide 80
 Boston Prasad

Allston



Slide 81

Allston

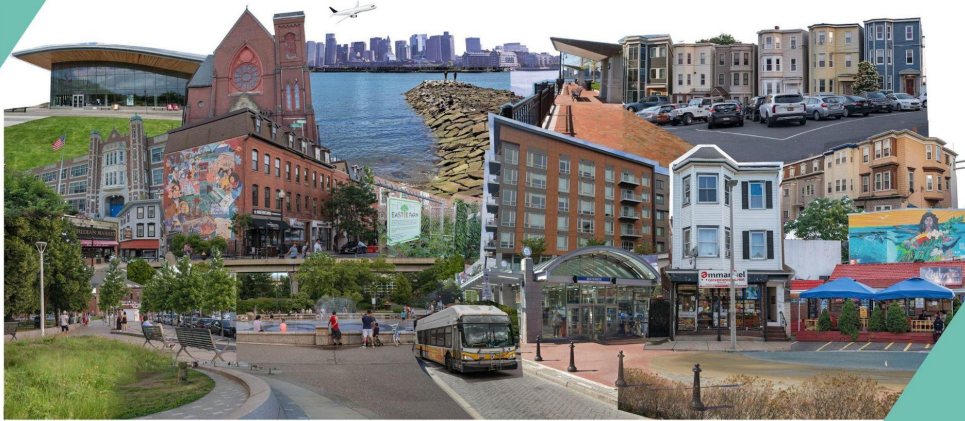
Chinatown



Slide 82

Chinatown

East Boston



Slide 83
East Boston

Upham's Corner



Slide 84
Upham's Corner

slido



What do you go to your neighborhood shops for most often?

① Click **Present with Slido** or install our [Chrome extension](#) to activate this poll while presenting.

Slide 85

What do you go to your neighborhood shops for most often?

slido



What about these collages reflect Boston to you? What do you envision for the future of square in your neighborhood?

① Click **Present with Slido** or install our [Chrome extension](#) to activate this poll while presenting.

Slide 86

What about these collages reflect Boston to you? What do you envision for the future of square in your neighborhood?



Slide 87

What's Next?

Where We're Headed

- Summarizing & digesting the input you shared tonight along with what we heard at the October Open Houses
- Refining the innovations, principles, and ideas based on your input
- Next phase: Implementation Roadmap

Got Questions/Comments? Reach out to Breeze Outlaw at breeze.outlaw@boston.gov

Slide 88

Where We're Headed

Summarizing & digesting the input you shared tonight along with what we heard at the October Open Houses

Refining the innovations, principles, and ideas based on your input

Next phase: Implementation Roadmap

Got questions / comments? Reach out to Breeze Outlaw at breeze.outlaw@boston.gov