

PLAN: Glover's Corner

Preserve. Enhance. Grow.



Visioning Exercise Guide - Facilitator

Objective

Each table as a group selects the top five shared priorities.

Exercise Steps

Introductions (Duration: 5 minutes)

Have everyone at the table introduce themselves and how they know the Study Area. Review the "Emerging Topics" bubble diagram and explain the "Background Methodology" for the exercise. Explain "Things to Consider" handout as more detailed descriptions of emerging topics.

Step 1: Pick Three (Duration: 15 minutes)

Each participant gets 17 cards. 16 of these cards have a priority statement based on public comments we have heard.

One card is an "additional priority" (blank) – a participant can add his/her own priority instead of one of the 16 priority cards.

After individually reviewing the cards and asking clarifying questions, each participant chooses his/her top 3 priorities and places them in a corresponding space on the board in the middle of the table when directed by the facilitator.

Step 2: Pick Five Together (Duration: 40 minutes)

The facilitator counts the cards in each category and records the top 5 priorities with the most cards.

Participants must now review each of the top 5 priorities as a team and decide whether the set of priorities are representative and work together as a set. Participants can feel free to exchange initial priorities for different ones during discussion.

By the end of this portion of the exercise the team has to have their final 5 priorities in no particular order. Tape the 5 to the final sheet. A volunteer will report back to the rest of the room with the table's top 6 priorities.

Background Methodology

The BPDA collected over 200 public questions and comments during our Question Campaign, Open House event, online survey, and Walk and Bike tours. These questions and comments have been organized into six planning themes, each theme has a distinct color:

- Neighborhood Character
- Public Realm & Open Space
- Housing
- Jobs & Businesses
- Mobility & Connectivity
- Environment & Climate Change

The priority cards for this exercise represent all six planning themes. The most frequently appearing comments and questions were drafted into short priority statements for this exercise.

The complete list of comments can be viewed on the presentation boards tonight and on the BPDA project website bit.ly/planglovers.

Facilitator Sheet

PLAN: Glover's Corner Visioning Workshop

Select Your Top Priorities

TABLE #

Create an active people-centric district through development

Support cultural diversity of the neighborhood

Neighborhood Character

Improve transit options and experience

Better manage traffic and reduce congestion

Provide more parking

Improve connections throughout the neighborhood

Mobility and Transportation

Plan for a climate resilient neighborhood

Create high-performance, green buildings

Environment and Climate Change

Create housing for a range of income levels

Provide a variety of housing types

Provide housing stability for existing residents

Housing

Preserve and grow quality jobs

Provide support for local business

Provide opportunities for 21st century industrial uses

Jobs and Businesses

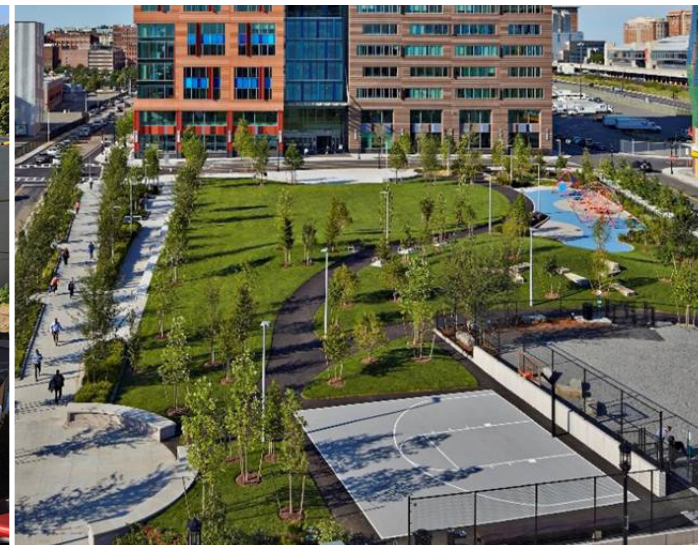
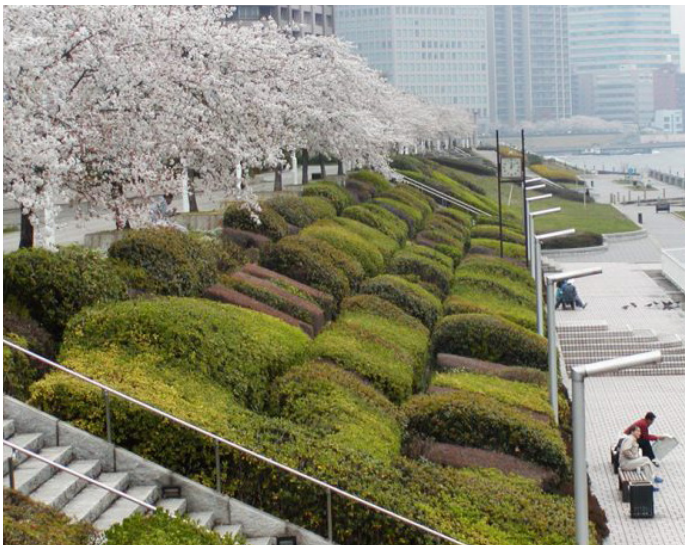
Create safe, walkable, bike-friendly streets

Create a variety of open spaces

Additional Priority

Public Realm and Open Space

Other



Plan for a climate resilient neighborhood

Create high-performance, green buildings

Create a variety of open spaces



Create safe, walkable, bike-friendly streets

Create an active people-centric district through development

Support cultural diversity of the neighborhood



Create housing for a range of income levels

Provide a variety of housing types

Provide housing stability for existing residents



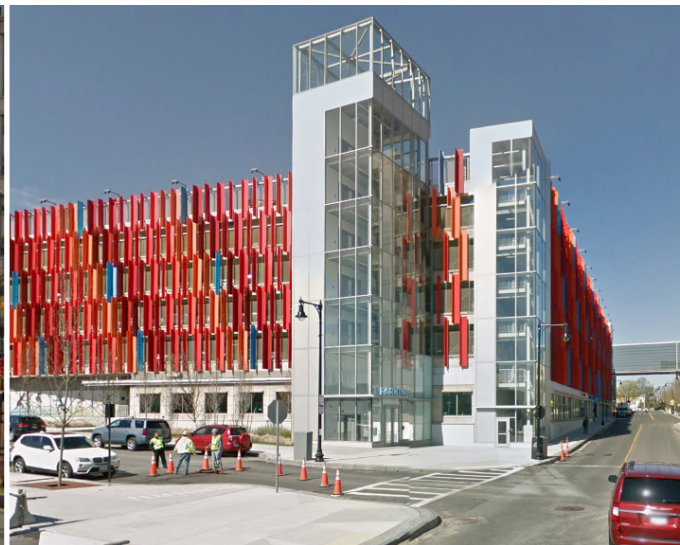
Preserve and grow quality jobs

Provide support for local business

Provide opportunities for 21st century industrial uses



Better manage traffic
and reduce congestion



Provide more
parking



Improve transit
options and experience



Improve connections
throughout the
neighborhood

Additional Priority:

Things to Consider

Use this to better understand each topic. Use the check boxes to keep track of your priorities.



Neighborhood Character

Create an active people-centric district through development

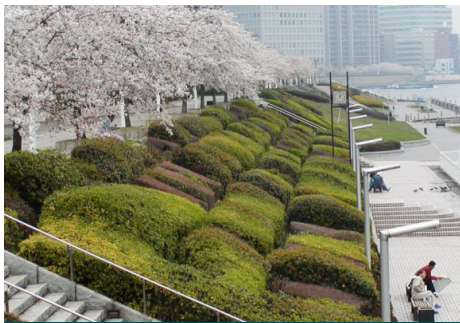
- Dense development can support many amenities and local transportation improvements.
- Development can provide benefits that do not exist in the area today (e.g. supermarket, neighborhood retail, etc.)



Neighborhood Character

Support cultural diversity of the neighborhood

- Ensure new development will incorporate a rich diversity of retail and neighborhood amenities.
- Require new development to support new public art and cultural amenities.



Environment & Climate Change

Plan for a climate resilient neighborhood

- Design buildings that can withstand major weather events.
- Use open space as a protective buffer from storm surges and to reduce untreated water runoff into storm sewers.



Environment & Climate Change

Create high-performance green buildings

- Design buildings that use less energy.
- Use sustainable construction methods.



Transportation & Mobility

Improve transit options and experiences

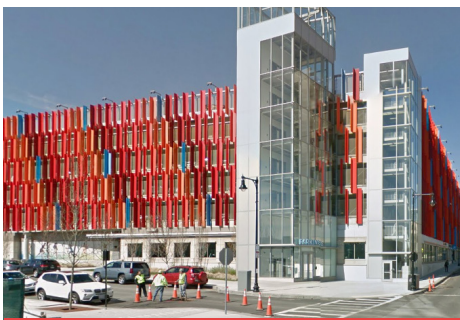
- Increase capacity to: support more users, reduce traffic congestion, support dense development, and improve air quality.
- Limited public funds exist for expanded service.



Transportation & Mobility

Better manage traffic and reduce congestion

- Improve intersection design, street design, and overall transportation network design.
- Create new streets with better connections to major thoroughfares.



Transportation & Mobility

Provide more parking

- Attracts more car users, car ownership, and traffic.
- Requires greater height/density to offset costs of structured/underground parking.
- Limits ground floor space that could be used for retail/commercial and open space amenities.



Transportation & Mobility

Improve connections throughout the neighborhood

- Create new routes that connect the neighborhood to transit, existing open spaces, and destinations.
- Make neighborhood more walkable, with more space available to the public.
- Reduce building footprints to create smaller block sizes with better human scale.



Housing

Create housing for a range of income levels

- Preserve neighborhood economic and cultural diversity by expanding housing opportunities for everyone.
- Greater height and density supports more income-restricted, affordable housing.



Housing

Provide variety of housing types

- Encourage housing that includes a diverse mix of:
 - Unit sizes (from single people and couples to multi-generational families)
 - Ownership or rental models
 - Artist housing
 - Accessible housing for varying ages and capacities
 - Building types



Housing

Provide housing stability for existing residents

- Coordinate strategies and partnerships to limit displacement.
- Connect residents to city resources (e.g. Office of Housing Stability, Department of Neighborhood Development).



Jobs & Businesses

Preserve and grow quality jobs

- Encourage jobs that match the skills of the neighborhood, now and in the future.
- Create career pathways so residents can gain skills, experience, and knowledge.



Jobs & Businesses

Provide support for local business

- Coordinate strategies and resources to support new and existing small businesses.
- Greater height and density can help subsidize smaller, affordable business spaces and incubator space.



Jobs & Businesses

Provide opportunities for 21st century industrial uses

- Create contemporary manufacturing jobs that are low impact and provide a wider variety of job opportunities.
- Potential to create conflicts between residential and business uses regarding noise and traffic.



Public Realm & Open Space

Create a variety of open spaces

- Creates a larger open space with diverse activities in one central location.
- Improves public health by providing more recreational options.
- Reduces land available for development, new streets, and parking, relative to the network of open space.



Public Realm & Open Space

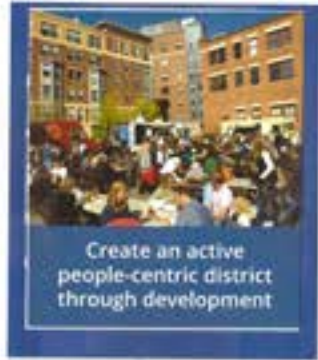
Create safe, walkable and bike-friendly streets

- Encourage users that rely less on cars.
- Provide new street trees, street furniture, bus stop shelters etc.
- Reduces land available for development, may require narrower streets/less street parking.
- Provide accessible routes for persons with all abilities.

PLAN: Glover's Corner Visioning Workshop

Select Your Top Priorities

TABLE # /
CECILIA



Support cultural diversity of the neighborhood

Neighborhood Character



1
Better manage traffic and reduce congestion

Provide more parking

Improve connections throughout the neighborhood

Mobility and Transportation

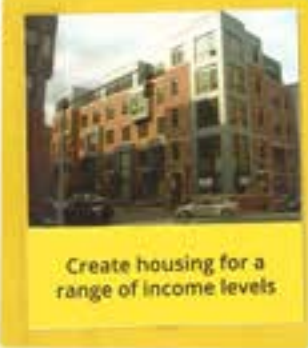
1



1
Create high-performance, green buildings

Environment and Climate Change

2



Provide a variety of housing types

Provide housing stability for existing residents

Housing

2



3
Provide opportunities for 21st century industrial uses

Jobs and Businesses



1
Create a variety of open spaces

Public Realm and Open Space

1



Other

PLAN: Glover's Corner Visioning Workshop

Select Your Top Priorities

TABLE # 5
MARK



Create an active people-centric district through development

Support cultural diversity of the neighborhood


⑤

①

Neighborhood Character

②

Improve transit options and experience



Better manage traffic and reduce congestion

②

③

Provide more parking

④

Improve connections throughout the neighborhood

⑤


Mobility and Transportation

Plan for a climate resilient neighborhood

Create high-performance, green buildings

Environment and Climate Change

②



Create housing for a range of income levels

Provide a variety of housing types


Provide housing stability for existing residents

②

④

Housing

②



Preserve and grow quality jobs

⑤

①

Provide support for local business

Provide opportunities for 21st century industrial uses

Jobs and Businesses

③



Create safe, walkable, bike-friendly streets

Create a variety of open spaces

Public Realm and Open Space

①

Additional Priority

Other

PLAN: Glover's Corner Visioning Workshop

Select Your Top Priorities

TABLE # 6
ELIZABETH

Create an active people-centric district through development



Neighborhood Character

1



Better manage traffic and reduce congestion

Provide more parking

Improve connections throughout the neighborhood

Mobility and Transportation

1

2



Create high-performance, green buildings

1

Create housing for a range of income levels

Provide a variety of housing types



Housing

4

2

5

Environment and Climate Change

+ increase sustainability to support local businesses

Create a variety of open spaces

Environment and Climate Change

Plan for a climate resilient neighborhood

Preserve and grow quality jobs



Jobs and Business

Provide opportunities for 21st century industrial uses

1

Create safe, walkable, bike-friendly streets

Create a variety of open spaces

Public Realm and Open Space

2

Additional Priority

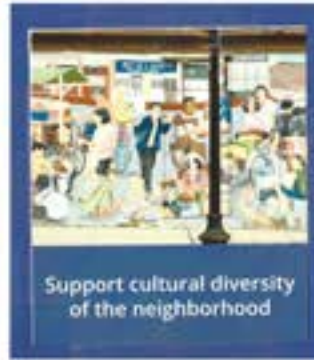
Other

PLAN: Glover's Corner Visioning Workshop

Select Your Top Priorities

TABLE # 7
CHRIS

Create an active people-centric district through development

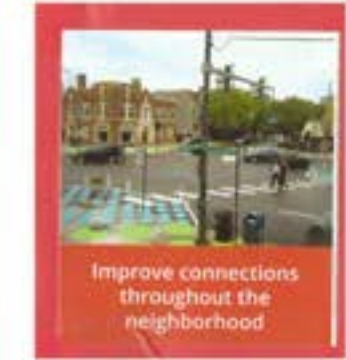


Neighborhood Character

Improve transit options and experience

Better manage traffic and reduce congestion

Provide more parking

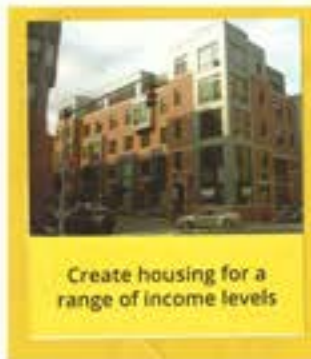


Mobility and Transportation

Plan for a climate resilient neighborhood

Create high-performance, green buildings

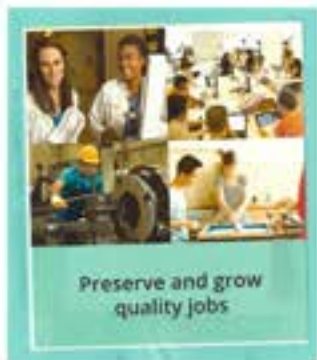
Environment and Climate Change



Provide a variety of housing types

Provide housing stability for existing residents

Housing



Provide support for local business

Provide opportunities for 21st century industrial uses

Jobs and Businesses

Create safe, walkable, bike-friendly streets

Create a variety of open spaces

Public Realm and Open Space

Additional Priority

Other