



PLAN

**Dorchester
Glover's Corner**

WORKSHOP DI MOBILIDAD I & KONETIVIDAD I

29 di nuvénbru di 2017

EKIPA DI PLANIAMÉNTU DI SIDADI

Boston Planning and Development Agency

Análizi di Merkadu Imobiliáriu/Viabilidadi

Ikonómiku– Konsultor

Abitason – Dipartaméntu di Dizenvolviméntu di Zónas, Autoridadi di Abitason di Boston, Abitason Justu

Imagine Boston 2030 – Gabeti di Prizidenti di Kámara

Dizenvolviméntu Ikonómiku– Gabeti di Dizenvolviméntu Ikonómiku, Gabeti di Dizenvolviméntu di Negósus

Finansiaméntu Públiku – Tizoraria, Avaliason, Dizenvolviméntu Ikonómiku & Korporason Industrial

Alojamentu Públiku– Skólas Públiku di Boston, Bibliotéka Públiku di Boston, Dipartaméntu di Pulísia di Boston, Dipartaméntus di Bonberu di Boston, Jeston di Propriedadi & Konstruson

EKIPA DI PLANIAMÉNTU DI SIDADI

Spasu Abértu- Parkis y Divertiméntu

Artis & Kultura- Kumison di Artis

Transpórti Públiku- MBTA

Transpórti – Dipartaméntu di Transpórti di Boston, Boston Bikes, MassDOT

Óbras Públiku – Dipartaméntu, Kumison di Midjoraméntu Públiku

Agu – Kumison di Agu & Isgotu di Boston

Anbienti/Sustentabilidadadi/Mudansa di Klima – Dipartaméntu di Anbienti, Kumison di Pontus di Referensa di Boston, Saúdi Públiku di Boston

Séntrus di Boston pa Juventudi & Familias

Kumison di Idozus

Kumison pa Pesoas ku Difisiéncias

AJÉNDA

- 1 Kuza ki Nu Obi
- 2 Go Boston 2030
- 3 Pamódi Planiaméntu di Transpórti?
- 4 Kondisons di Transpórti ki dja Izisti
- 5 Izersísiu di Planiaméntu



VIZON JERAL DI PRUSÉSU DI PLANIAMÉNTU

FEBRERU di 2017 Kanpanha di Purguntas

8 DI MARSU DI 2017 Kaza Abértu

4 DI MAIU DI 2017 Paseius Pé na Txon y na Bisikléta

18 DI MAIU DI 2017 Workshop di Vizon

15 DI JUNHU DI 2017 Konsultor di Transpórti

28 DI JUNHU DI 2017 Workshop di Planiaméntu

JULHU DI 2017 Grupu Konsultivu Finalizadu

25 di OTUBRU di 2017 Workshop sobri Uzu di Terenu

29 di NUVÉMBRU di 2017 Workshop sobri Transpórti

10 di JANERU di 2018: Workshop di Inprégu y Abitason Parti I

FEBRERU di 2018: Workshop di Inprégu y Abitason Parti II

MARSU di 2018 Workshop di Planiaméntu



Paseiu Pé na Txon, 4 di Maiu di 2017



Workshop di Planiaméntu, 28 di Junhu di 2017

PLAN: Glover's Corner Dorchester

Prezerva, midjora y krese



1

Kuza ki Nu Obi



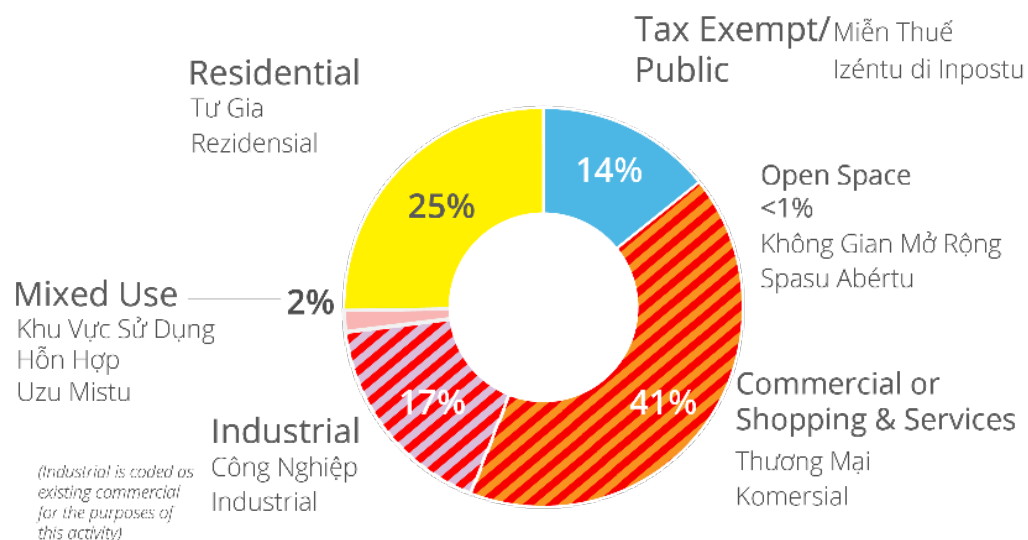
Workshop di Uzu di Txon di Glover's Corner

IZERSÍSIU DI UZU DI TERENU

Workshop di 25 di OTUBRU di 2017

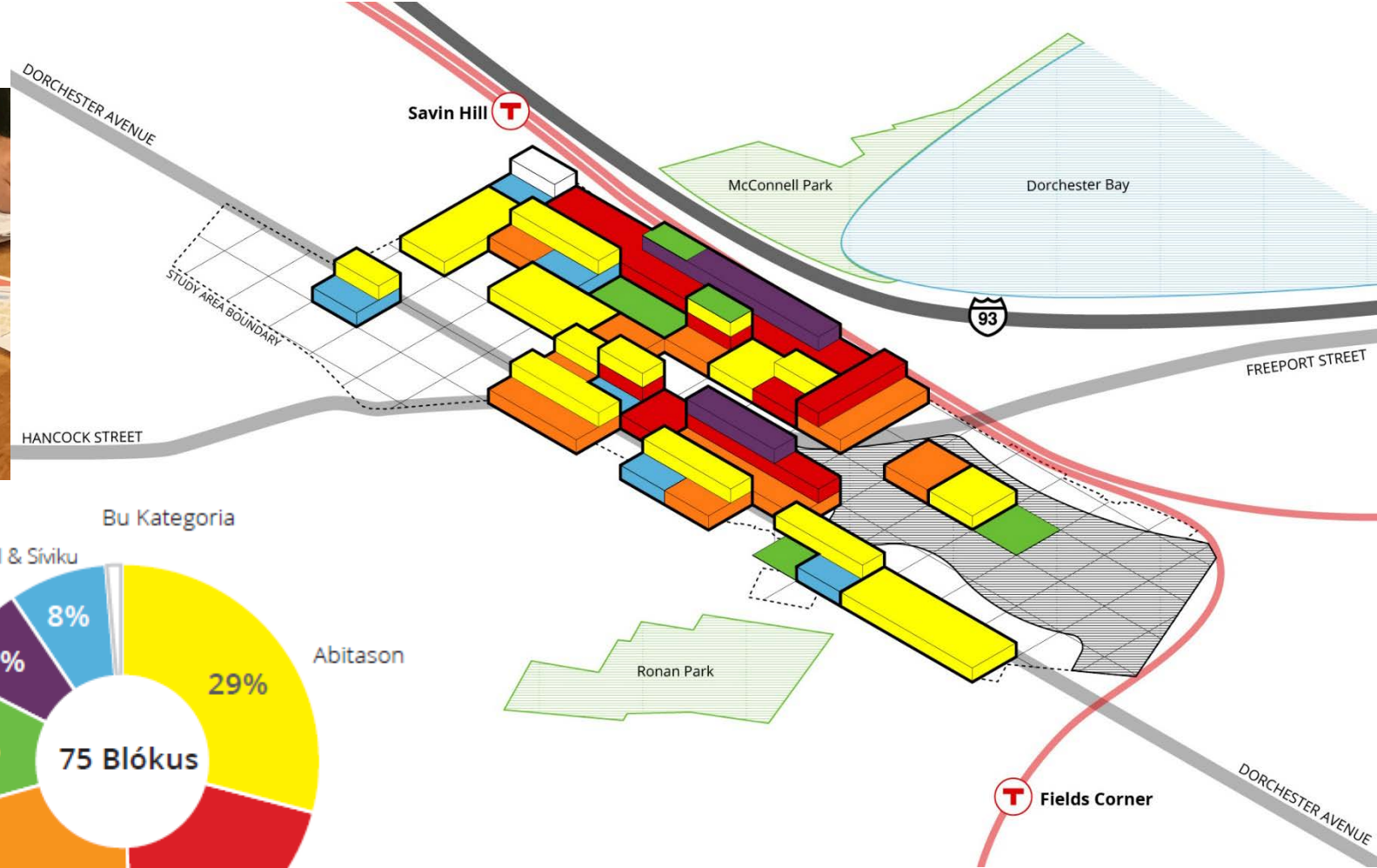
- En ekipa, kria un vizon di uzu di terenu pa Ária di Studu di PLAN: Glover's Corner Area
- Ilustra ki árias ki bu ta gostaba di **prezerva** y ki árias ki provávelmenti ta ben **muda**

Existing Land Use Breakdown



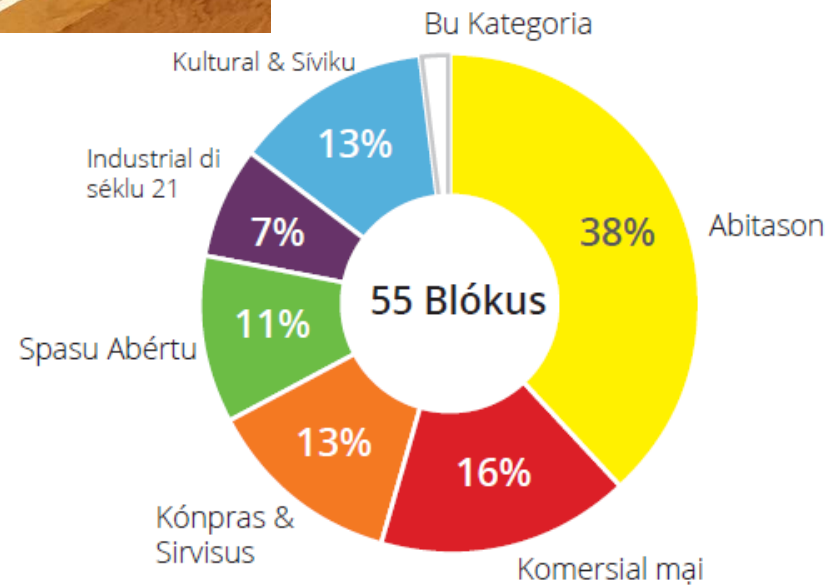
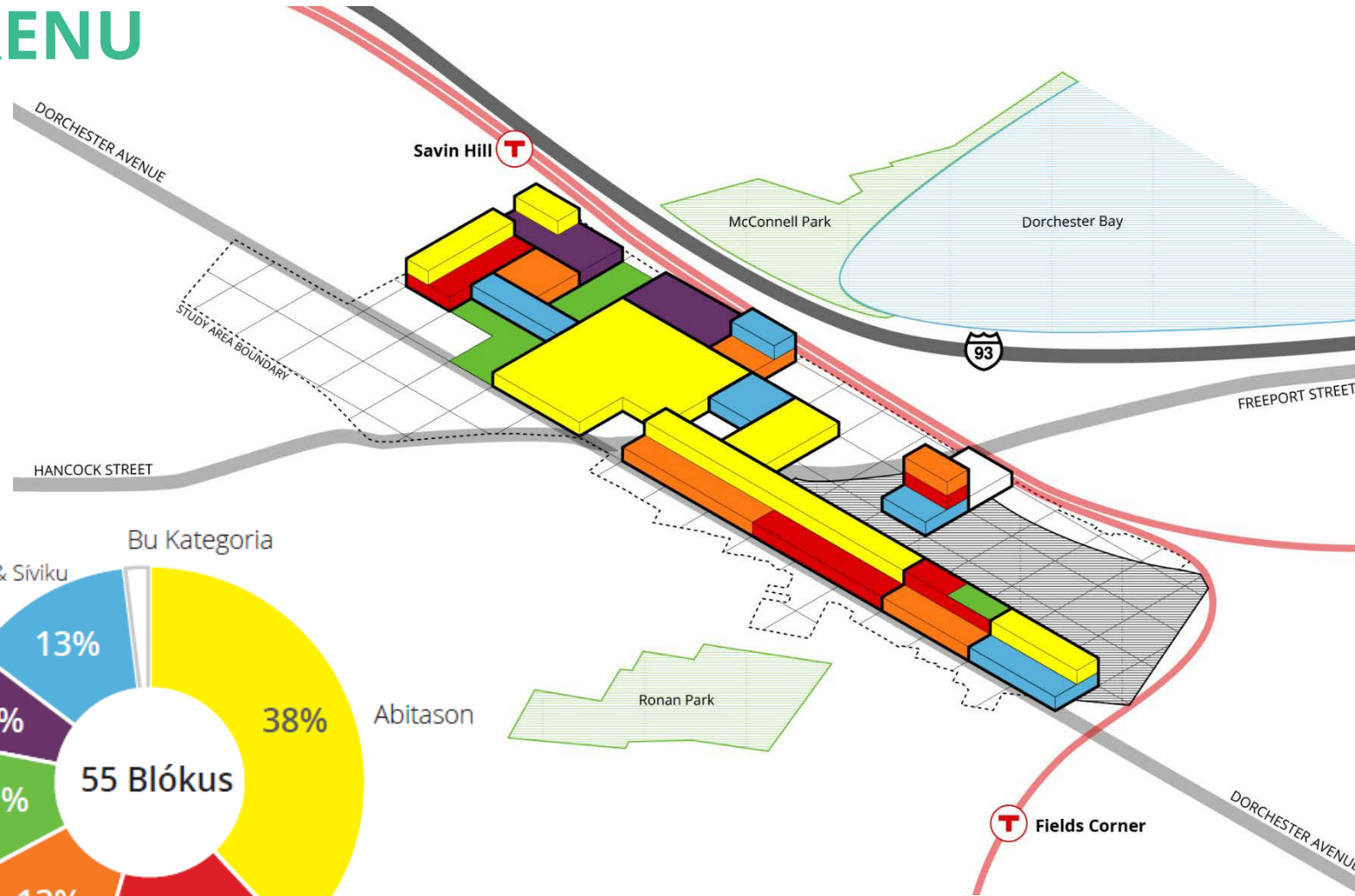
IZERSÍSIU DI UZU DI TERENU

Mesa 1



IZERSÍSIU DI UZU DI TERENU

Mesa 3



PLAN: Glover's Corner Dorchester

Prezerva, midjora y krese

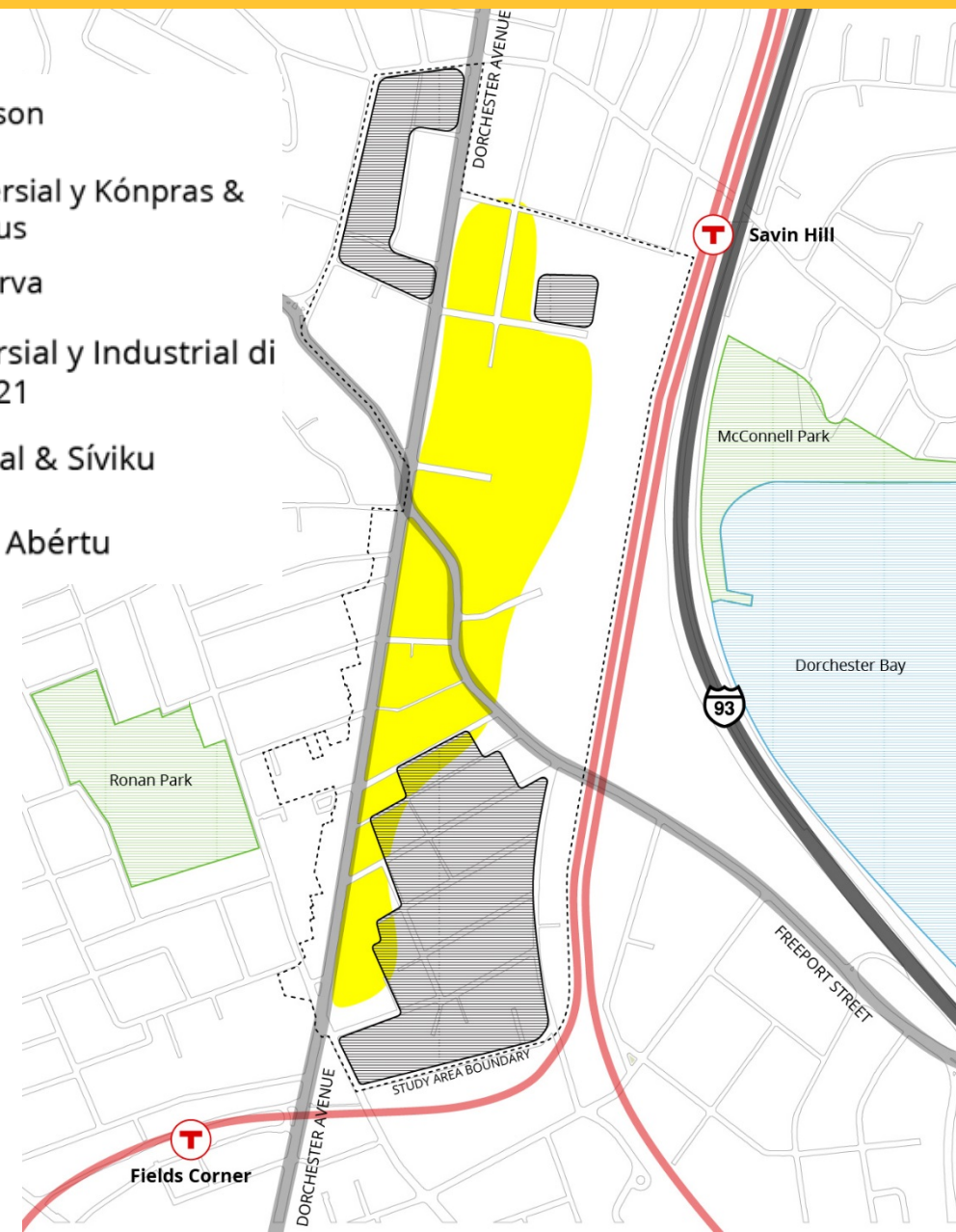


KUZA KI NU OBI

Izersísiu di Uzu di Txon

- Árias pa prezerva: redi rezidensial ki dja izisti, Savin Hill Apartments, Boys & Girls Club di Dorchester
- Uzus di abitason na Dorchester Avenue y na Freeport Street, má lonji di kaminhu di féru di Red line (linha burmedju)

-  Abitason
-  Komersial y Kónpras & Sirvisus
-  Prezerva
-  Komersial y Industrial di séklu 21
-  Kultural & Síviku
-  Spasu Abértu



PLAN: Glover's Corner Dorchester

Prezerva, midjora y krese

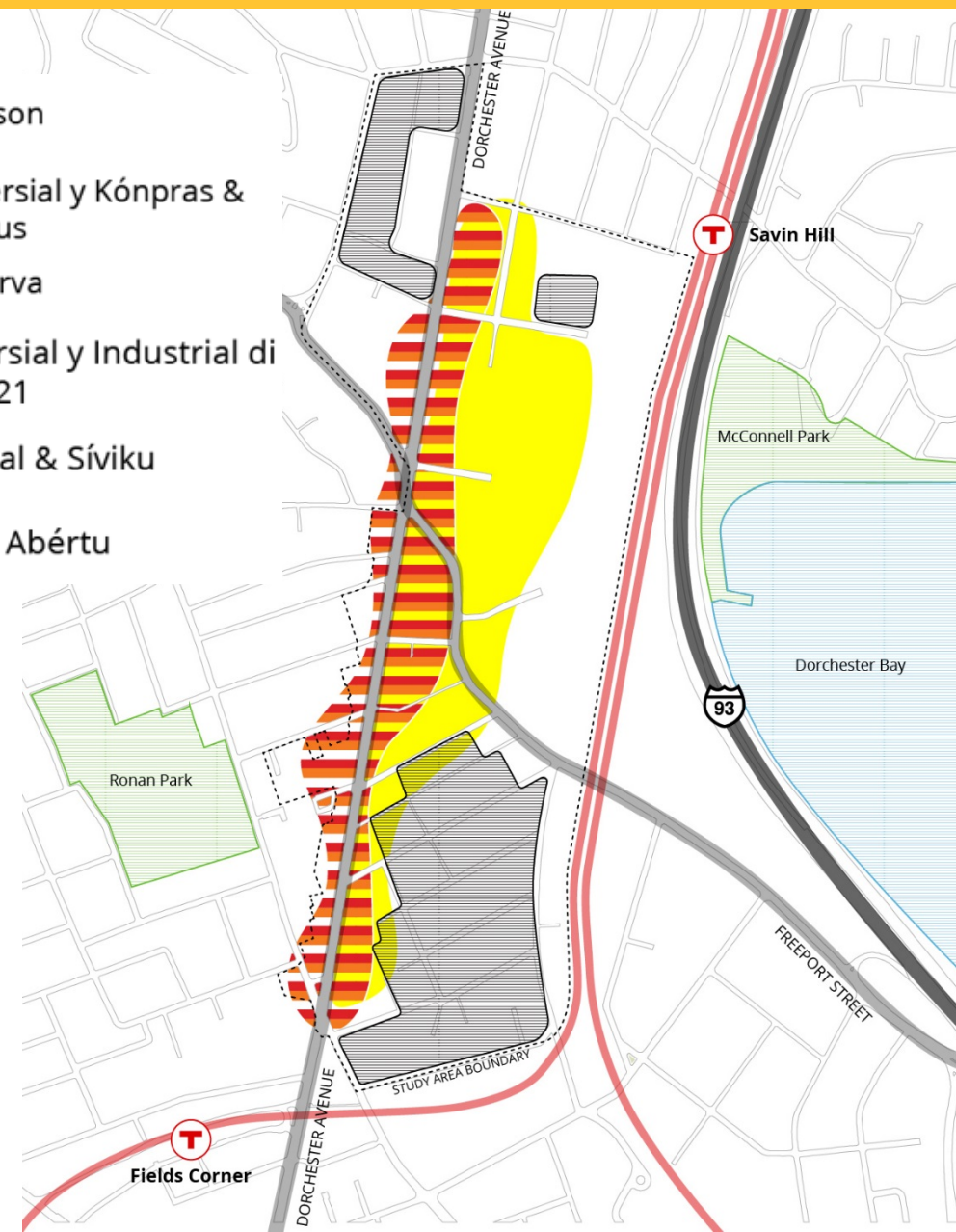


KUZA KI NU OBI

Izersísiu di Uzu di Txon

- Árias pa prezerva: redi rezidensial ki dja izisti, Savin Hill Apartments, Boys & Girls Club di Dorchester
- Uzus di abitason na Dorchester Avenue y na Freeport Street, má lonji di kaminhu di féru di Red line (linha burmedju)
- Lójas y uzus komersial na Dorchester Avenue

-  Abitason
-  Komersial y Kónpras & Sirvisus
-  Prezerva
-  Komersial y Industrial di séklu 21
-  Kultural & Síviku
-  Spasu Abértu



PLAN: Glover's Corner Dorchester

Prezerva, midjora y krese

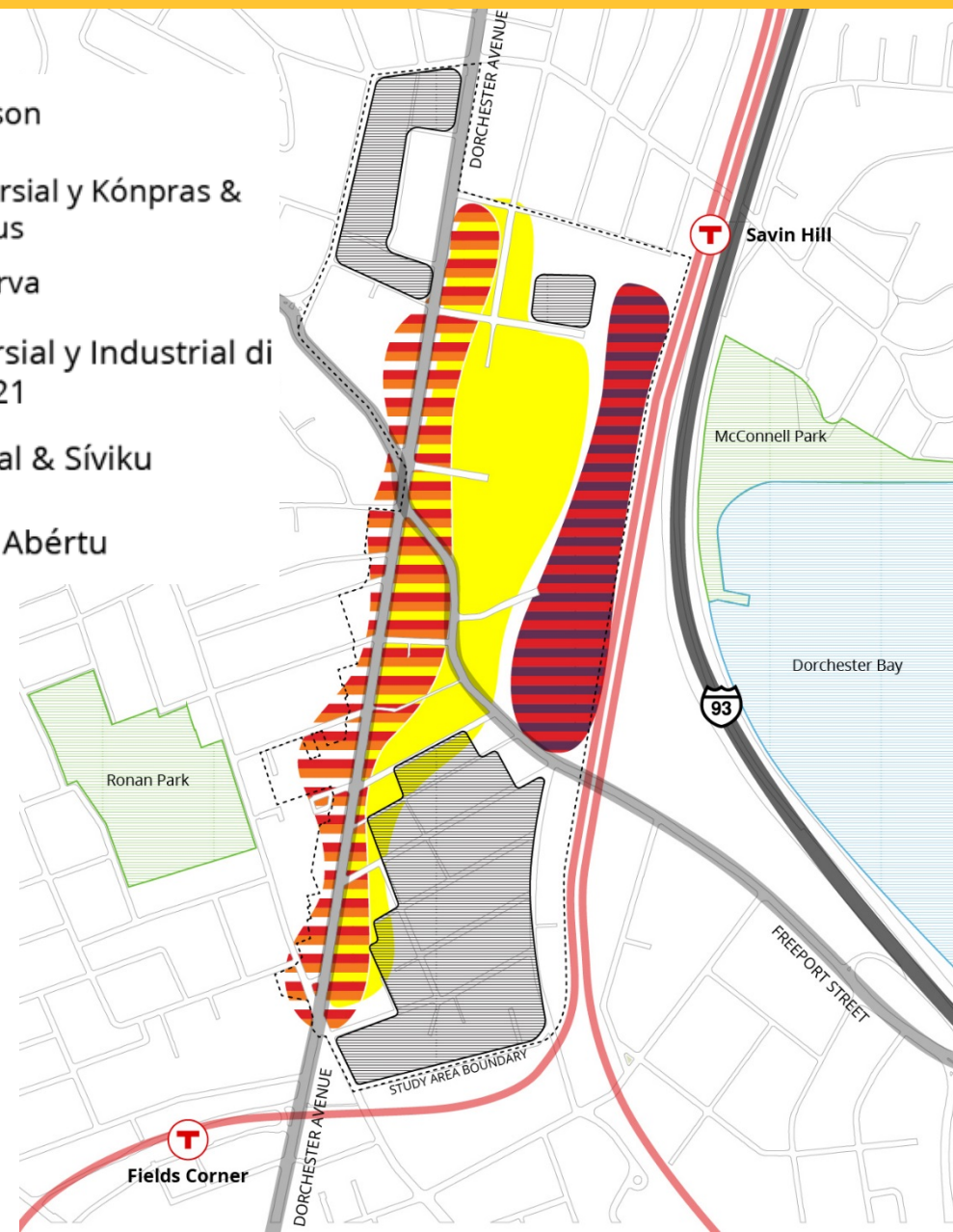


KUZA KI NU OBI

Izersísiu di Uzu di Txon

- Árias pa prezerva: redi rezidensial ki dja izisti, Savin Hill Apartments, Boys & Girls Club di Dorchester
- Uzus di abitason na Dorchester Avenue y na Freeport Street, má lonji di kaminhu di féru di Red line (linha burmedju)
- Lójas y uzus komersial na Dorchester Avenue
- Industrial di séklu 21 y uzus komersial mistu pértu di kaminhu di féru di Red line

-  Abitason
-  Komersial y Kónpras & Sirvisus
-  Prezerva
-  Komersial y Industrial di séklu 21
-  Kultural & Síviku
-  Spasu Abértu



PLAN: Glover's Corner Dorchester

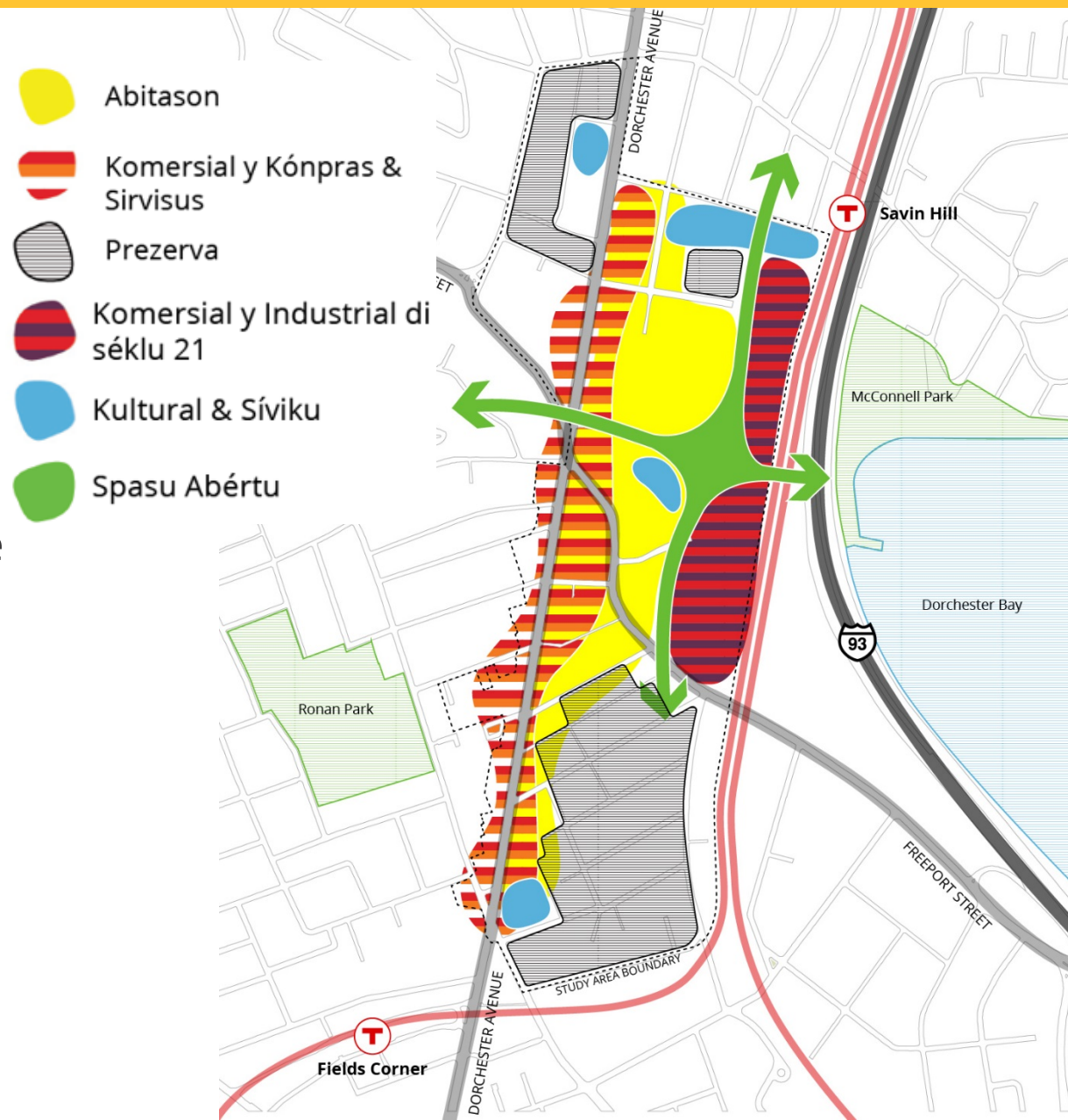
Prezerva, midjora y krese



KUZA KI NU OBI

Izersísiu di Uzu di Txon

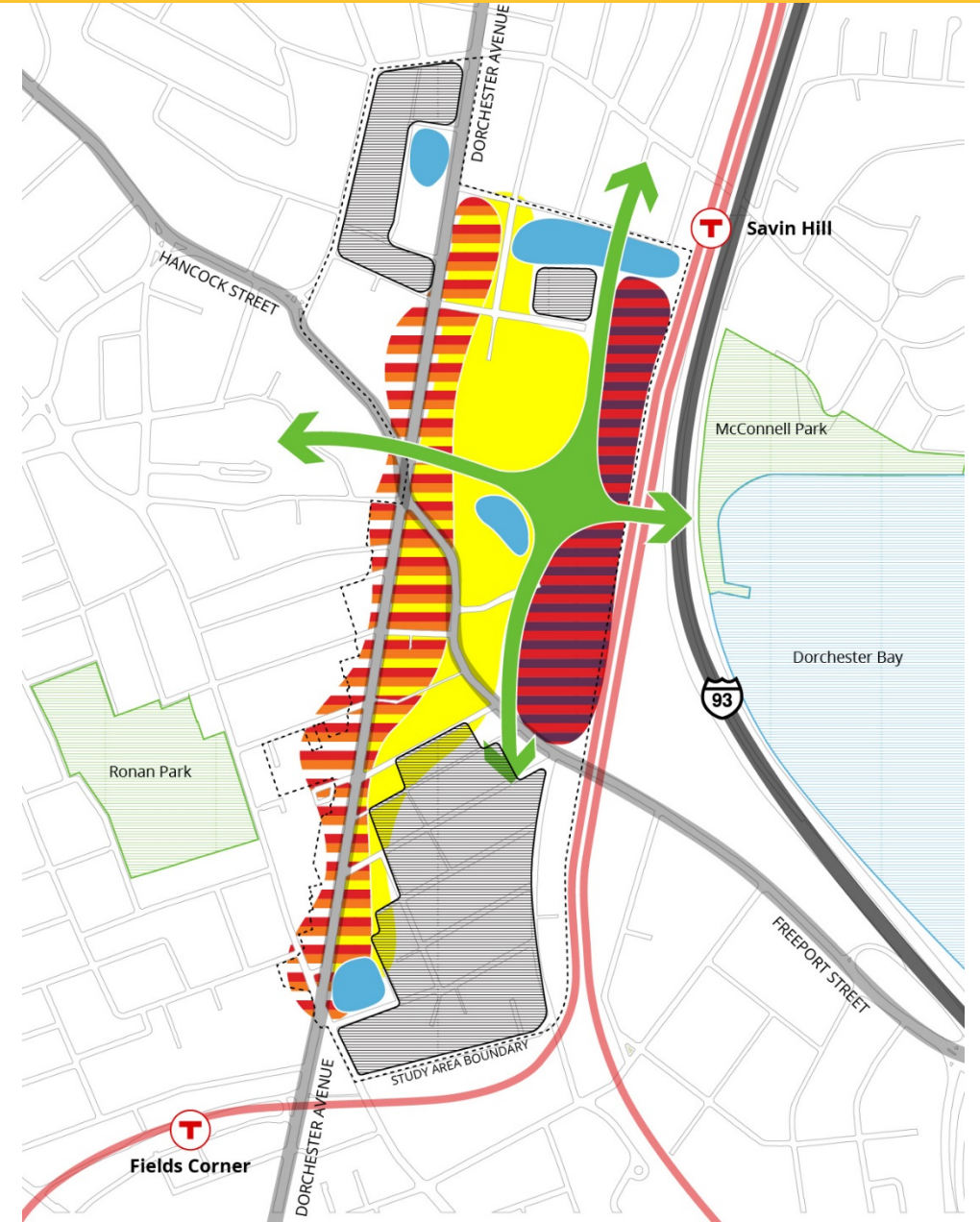
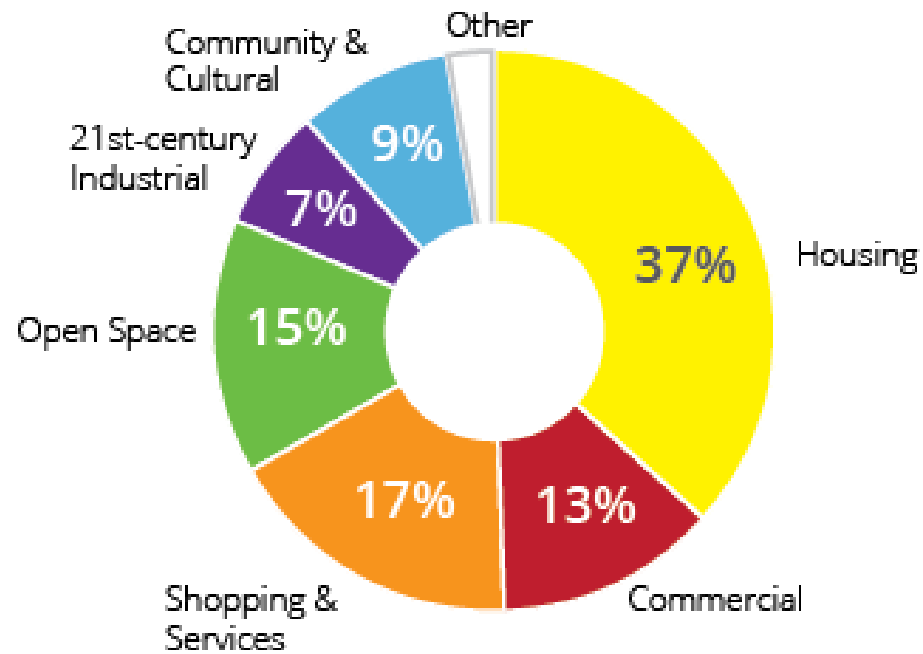
- Árias pa prezerva: redi rezidensial ki dja izisti, Savin Hill Apartments, Boys & Girls Club di Dorchester
- Uzus di abitason na Dorchester Avenue y na Freeport Street, má lonji di kaminhu di féru di Red line (linha burmedju)
- Lójas y uzus komersial na Dorchester Avenue
- Industrial di séklu 21 y uzus komersial mistu pértu di kaminhu di féru di Red line
- Oferese un spasu abértu sentral más grandi y ligason ku un redi más grandi di spasus abértu
- Oferese un variedadi di spasus síviku, idukativu, y kultural pa sirbi un kumunidadi diversifikadu



KUZA KI NU OBI

Izersísíu di Uzu di Txon

Análizi Konseitual di Uzu di Terenu na Futuru



PLAN: Glover's Corner Dorchester

Prezerva, midjora y krese



2

Go Boston 2030



Vizon Panorámiku di Glover's Corner

GO BOSTON 2030

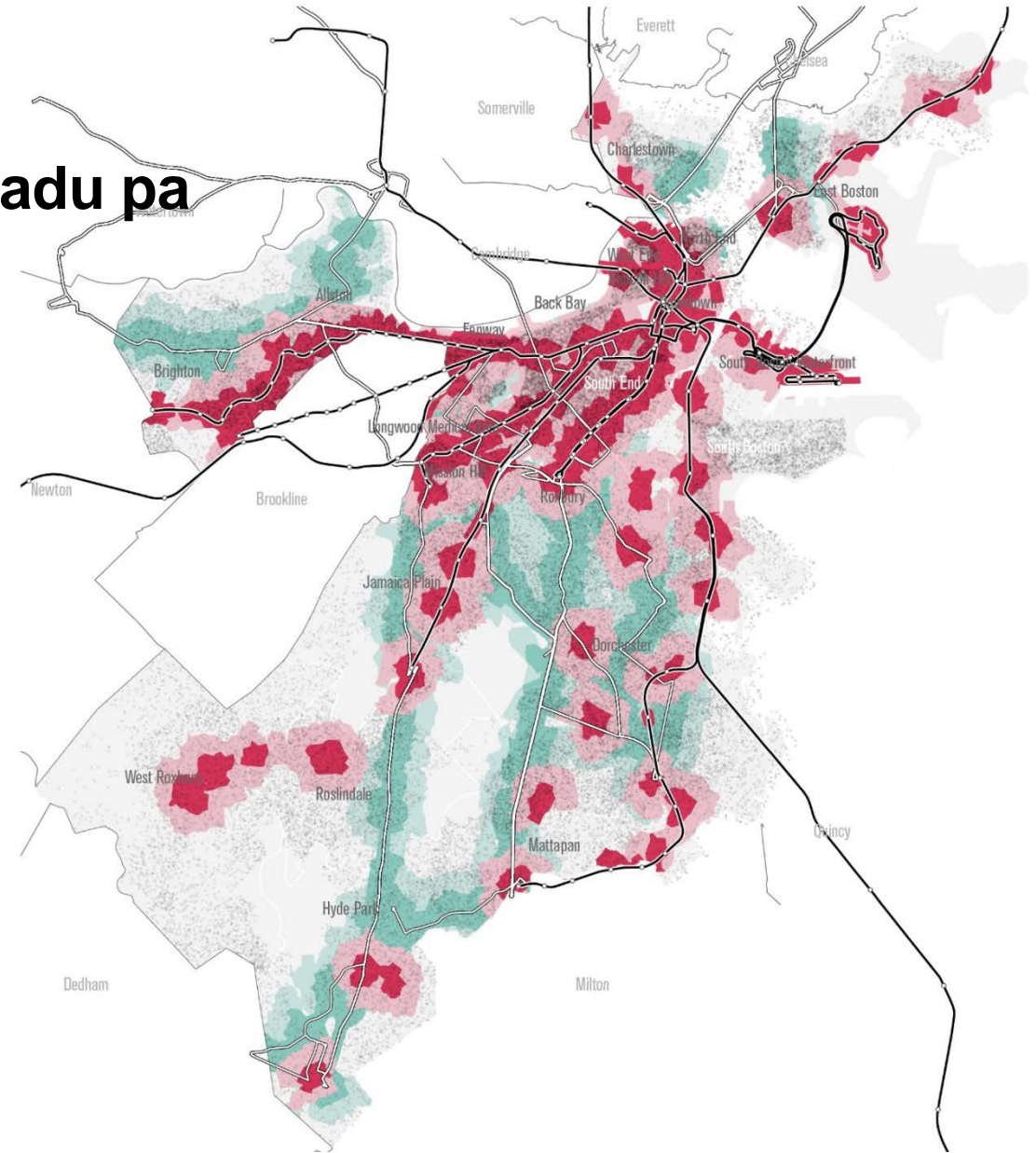
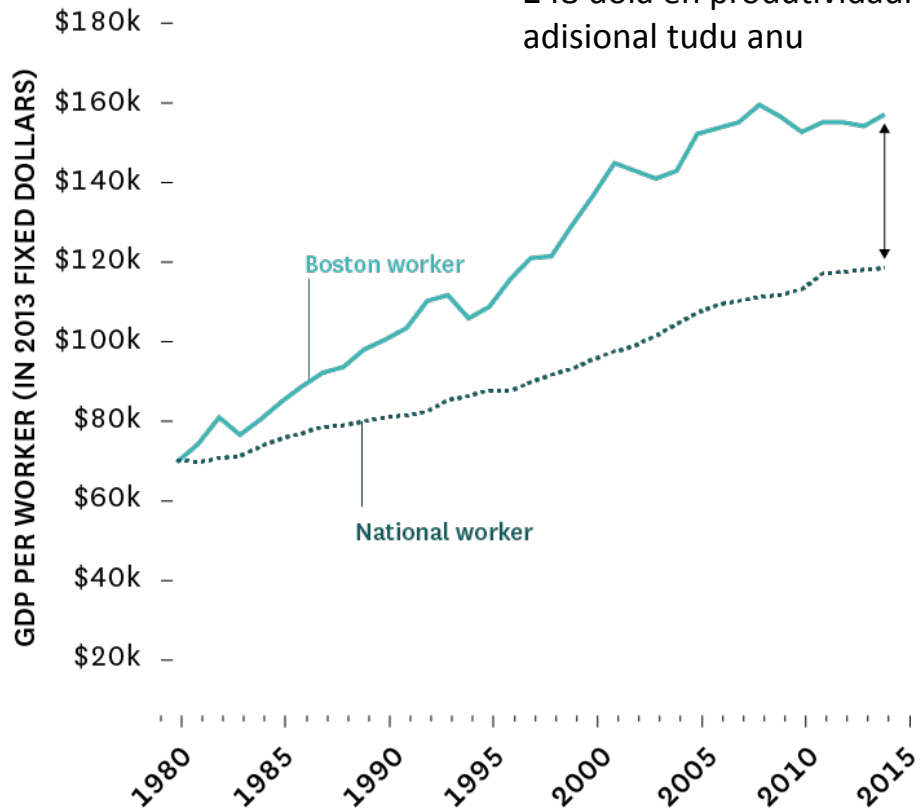
Imagining Our Transportation Future



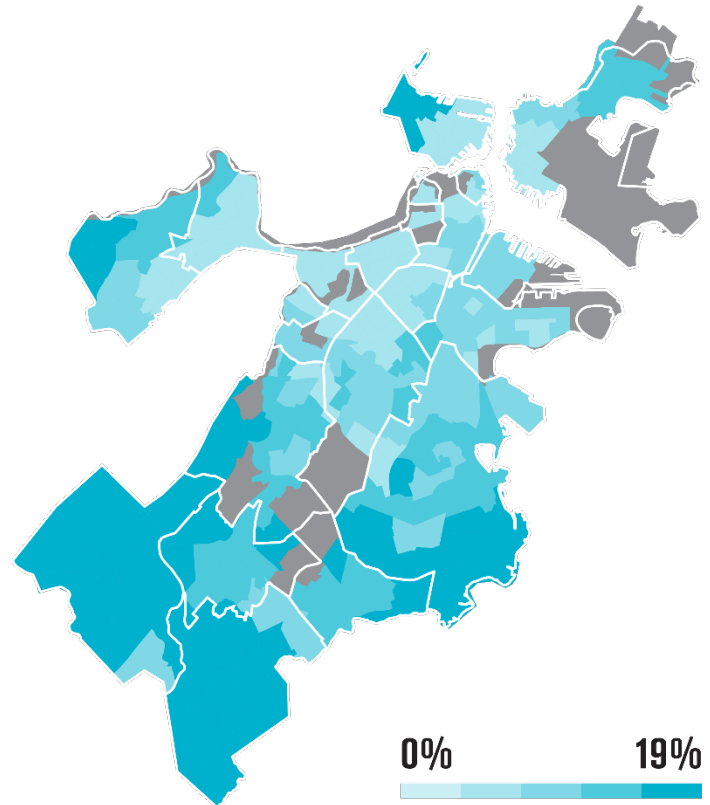
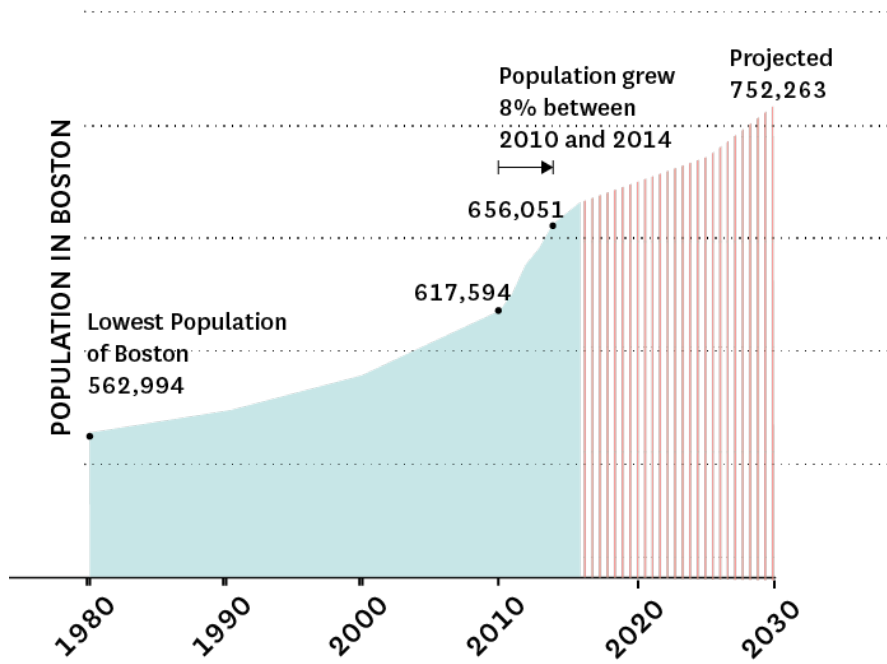
Oportunidadi & Asésu

Más di 50.000 nóvus trabadju – asésu limitadu pa txeu

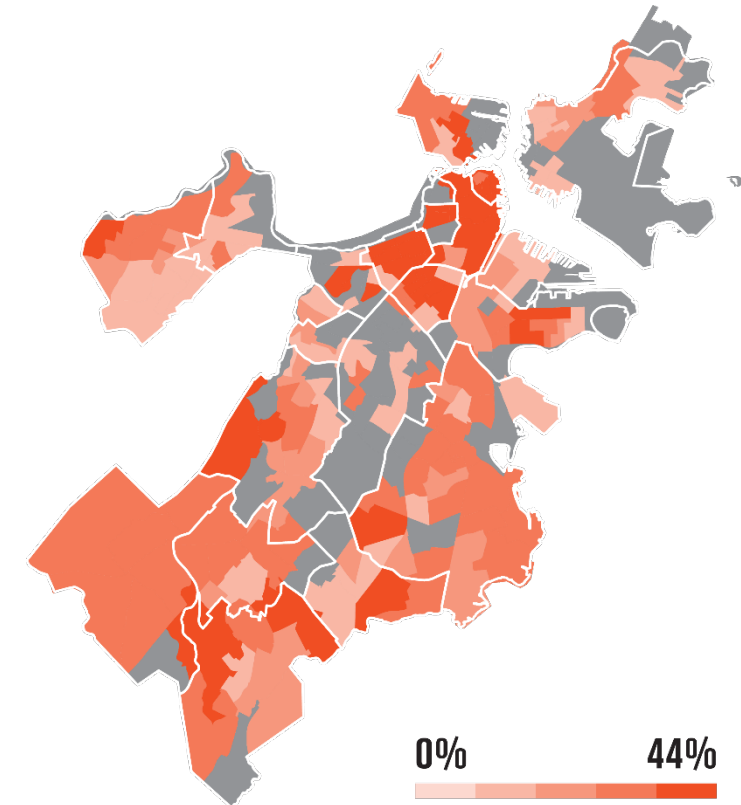
Trabadjadoris altamenti kualifikadu di Boston ta jera 248 dóla en produktivadi adisional tudu anu



Kresiméntu y Kustus di Populason



Kustu di Transpórti



Kustu di Abitason

5.000 Purgunta 9 Tema

- **Asésu**
- **Siguransa**
- **Fiabilidadi (konfiansa)**
- **Kualidadi di Speriansia**
- **Inovason y Teknolujia**
- **Asesibilidadi di Présu**
- **Rizisténsia**
- **Guvernsason
Transparenti**
- **Saúdi**



Prinsipal Métras Anbisiozu

Asésu

Tudu kaza di Boston a un distansia di 10 min (pé na txon) di un stason di konboiu ó linha di otkaru, y Stason di Hubway (bisikléta), y buleia partilhadu

Di **42%** pa **100%** di familias

Fiabilidadi

Média di témpu ki rezidentis di Boston ta gasta pa viaja pa trabadju ta diminui 10%

Di **28,8** pa **25,9** minutu

Siguransa

Ilimina fatalidadis di tránzitu na Boston

Di un média di 18 mórtis na tránzitu tudu anu pa zéru

Tudu kaza a un distansia di 5 minutu (pé na txon) di un lugar di panha bisikléta ó kaminhu di uzu partilhadu protejidu

Di **20%** pa **100%**

Métas Anbisiozu pa Distribuison di Módus

Rezidentis di Boston ki ta viaja pa trabadju	Distribuson Oji	Anbison ti 2030
Tránzitu Públiku	33%	Aumentu di 1/3
Anda	14.5%	Aumentu di kuazi metadi
Bisikléta	1.9%	Aumentu kuadruplikadu
Buleia partilhadu	5.4%	Diminuison mínimu
Konduzi Só	40.6%	Diminuison di metadi
Otu, Trabadja na Kaza	4.5%	Lijeru aumentu di pesoas ki ta Trabadja na Kaza

Redis di Ruas Konplétu

Ruas konplétu di Boston

Faxa di Otokaru & Priorizason di Tránzitu

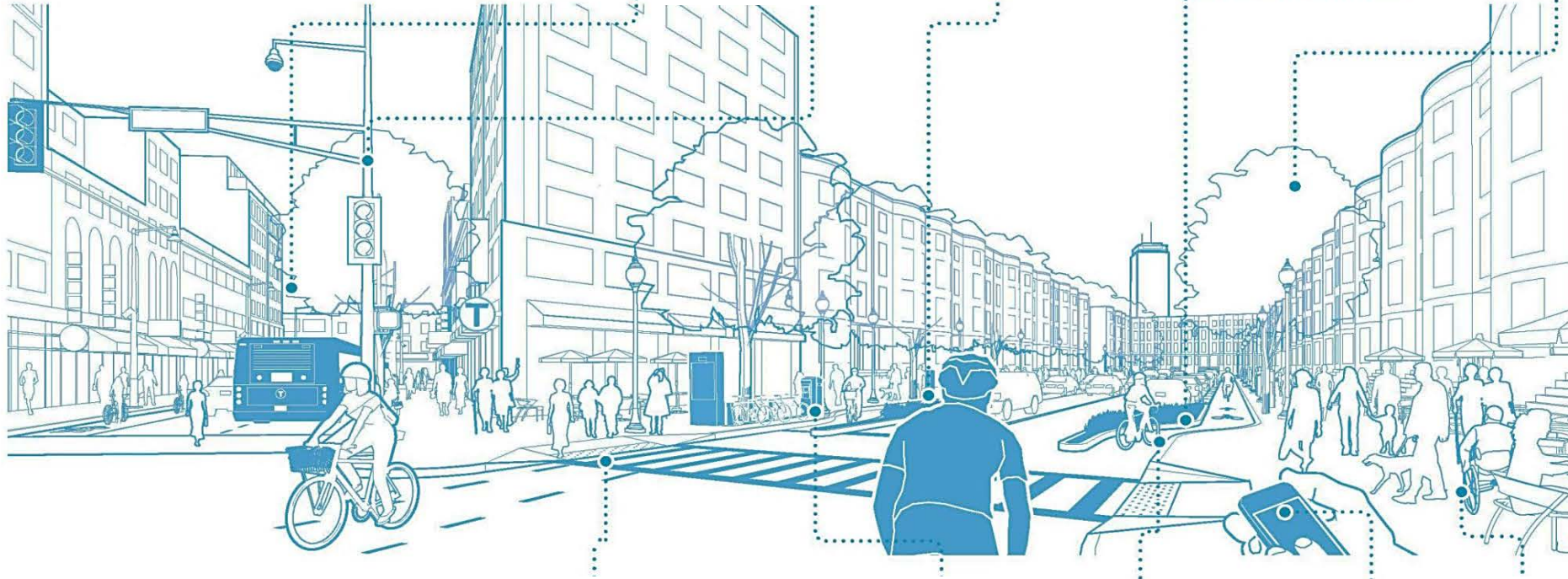
Sinalizason intelijenti y kámaras di tránzitu

Stasons di bisikléta y di buleia partilhadu

Largura mínimu di faxas

Jardins di txuba

Arvis di rua



Stasons pa karegaméntu di veículus ilétriku

Fasilidadi di manutenson

Superfisis asesível

Superfisis pentrável

Parkímetrus intilijenti

Faxas pa bisiklétas & pistas pa bisiklétas

Etiketas dijital y painel di informason

Paseius largu

BOSTON COMPLETE STREETS GUIDELINES

TRANSPORTATION DEPARTMENT

Partilha ruas di Boston



Nóvu Zóna di Mobilidadi microHUBs

Stasionaméntu pa buleia partilhadu - karu y bisikléta

Intréguas di merkadoria pikinóti

Informason na témpu rial

Mikro tránzitu (Karu óki bu pidi)

Redi di inerjia linpu y karegaméntu di veíkulus ilétriku



Tendências di Mobilidadi

- Konsentra na siguransa y insentiva transpórti saudável
- Aumenta konkorensa pa faxas di rodajen y spasu na kalsada
- Más pesoas na más poku veíkulus
- Más opson di viaji ku aumentu di mobilidadi partilhadu
- Teknolujia di veíkulus automatizadu y konektadu dja txiga!
- Aborda justisa sosial y konviniénsia di speriensia di viaji

PLAN: Glover's Corner Dorchester

Prezerva, midjora y krese



3

Pamódi Planiaméntu di Transpórti?



Vizon Panorámiku di Glover's Corner

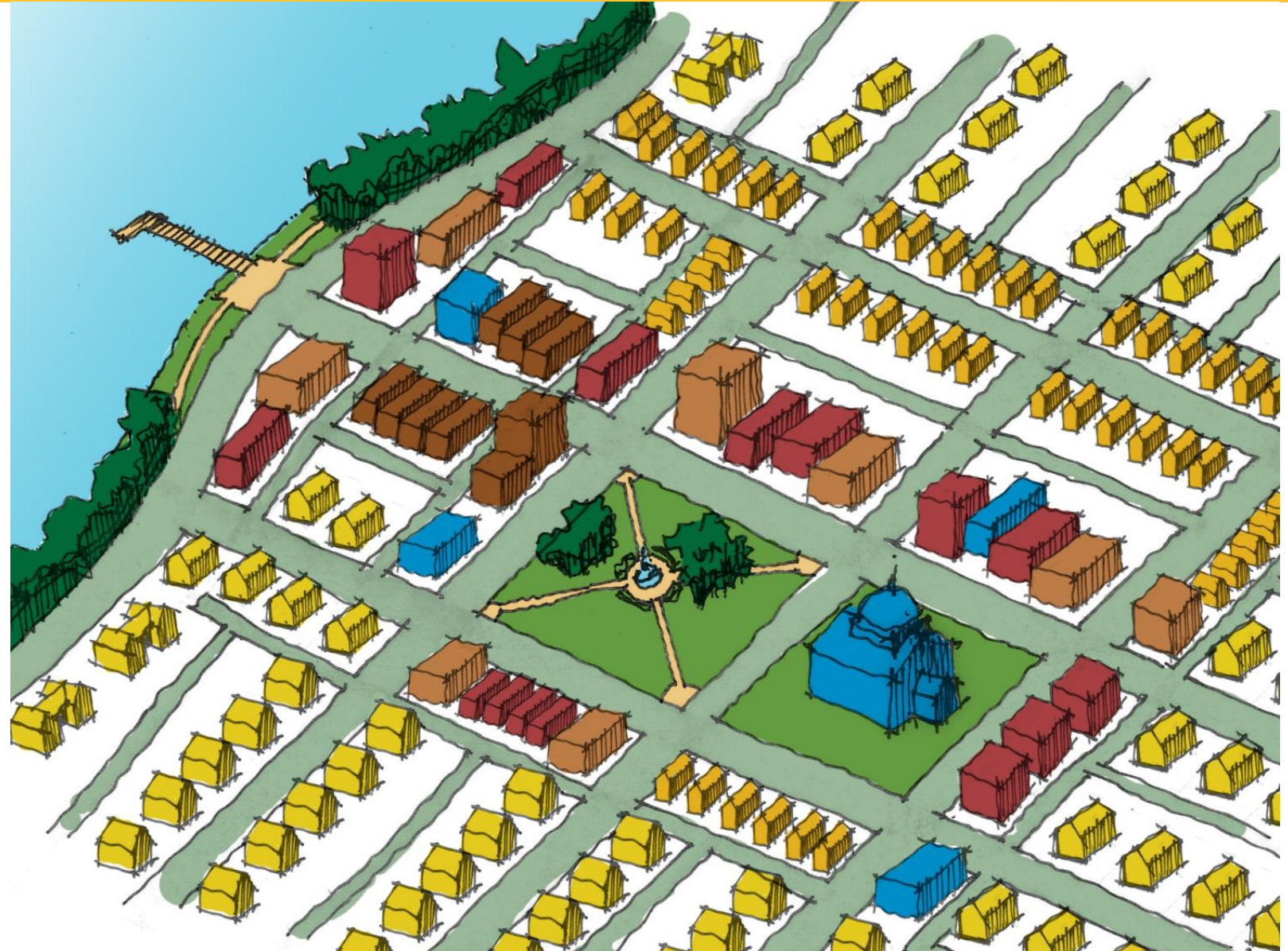
PLAN: Glover's Corner Dorchester

Prezerva, midjora y krese



GRÁFIKU DI ILIMÉNTUS DI UN KUMUNIDAD

-  Parks and Open Space
-  Civic Uses
-  Commercial/Office
-  Mixed-use/Retail
-  Single-family Residential
-  Multi-family Residential



Source: Kittelson & Associates, Inc.

GRÁFIKU DI ILIMÉNTUS DI UN KUMUNIDADÍ



Mistura di Densidatis
Rezidensial & Tipus

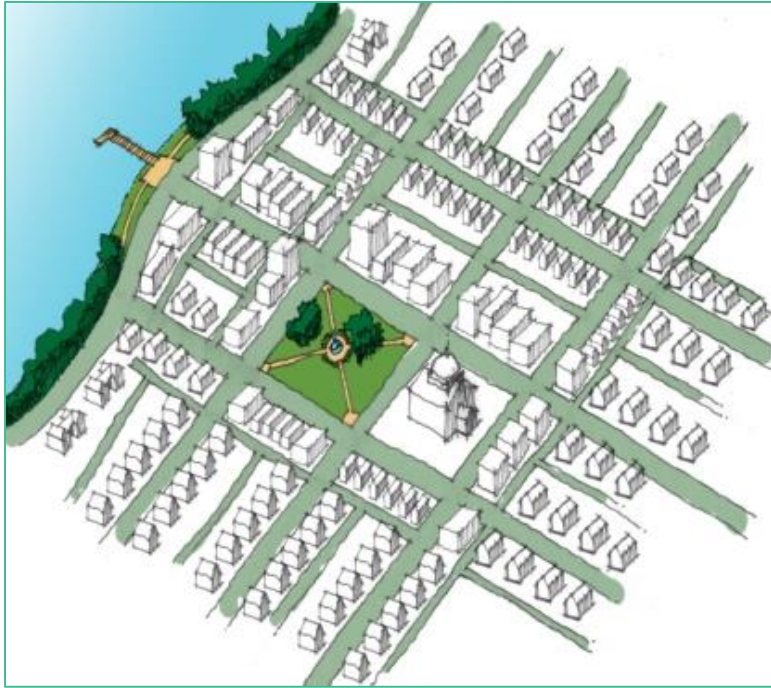


Uzus Institusional & Kumunitáriu

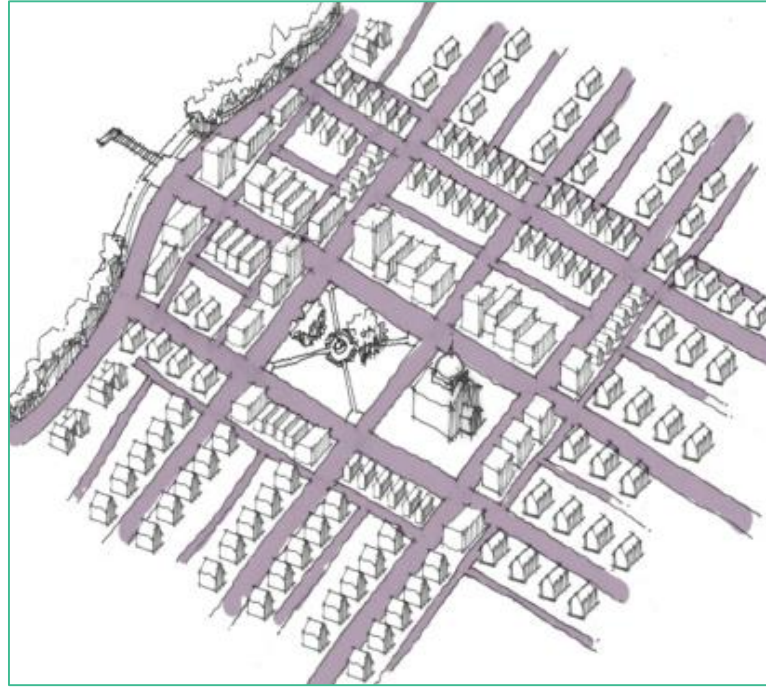


Uzus Komersial & Mistu

GRÁFIKU DI ILIMÉNTUS DI UN KUMUNIDAD



Sistémas di Parkis & Spasus abértu



Redi di Transpórti



Anbienti Natural

RUAS SIMA STRUTURA DI UN KUMUNIDAD



Fotografia Stóriku di Beacon Street di Beacon Hill



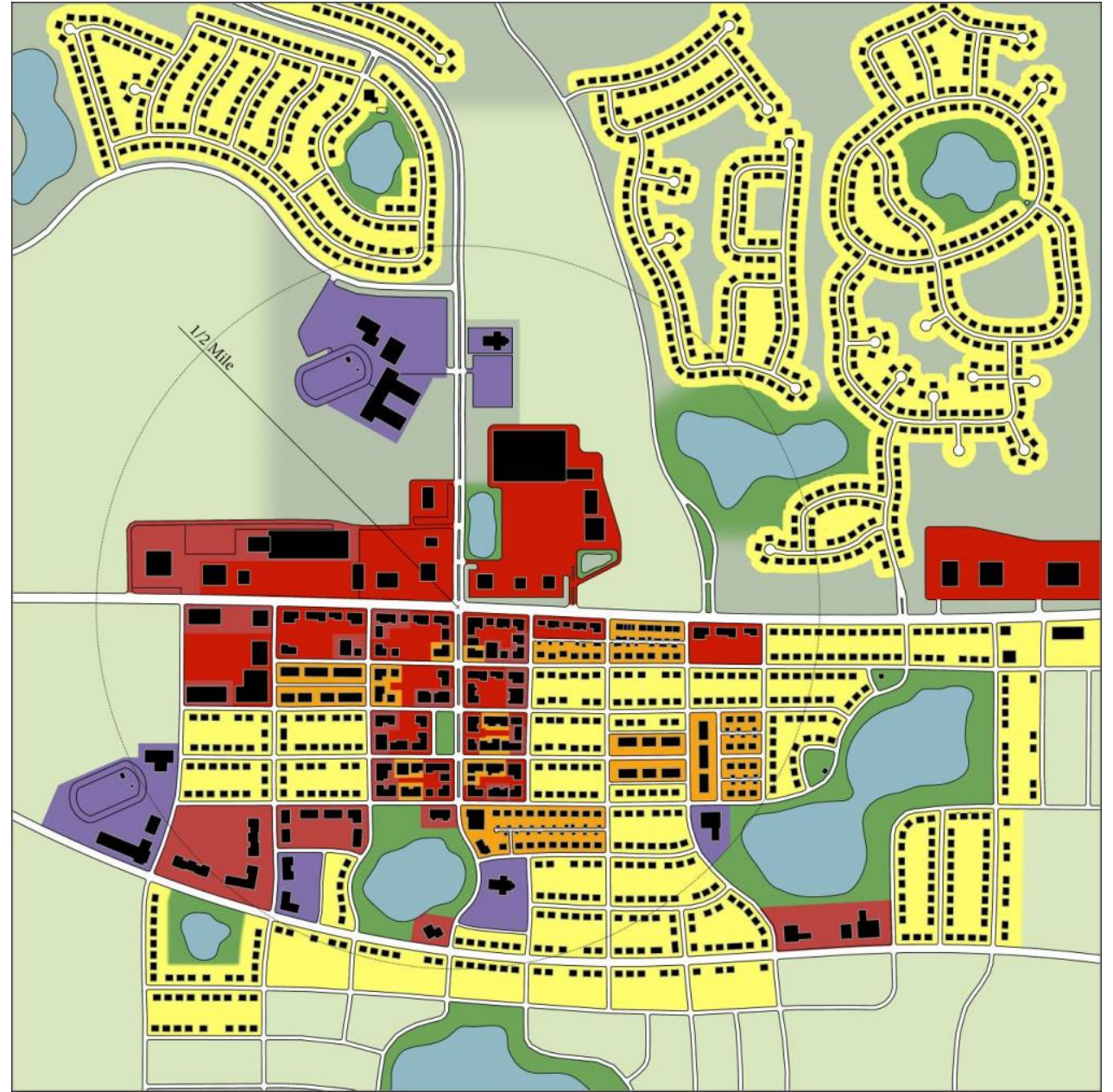
Dia di Oji di Beacon Street di Beacon Hill

KONPARASONS DI PADRONS DI DIZENVOLVIMÉNTU

- Mistura di Uzu di Txon
- Mistura di Produktu
- Padron y Skala di Dizenvolviméntu
- Dimanda di Infrastrutura
- Kontiguidadi (prosimidadi) di Dizenvolviméntu

KUMUNIDADI
IZOLADU

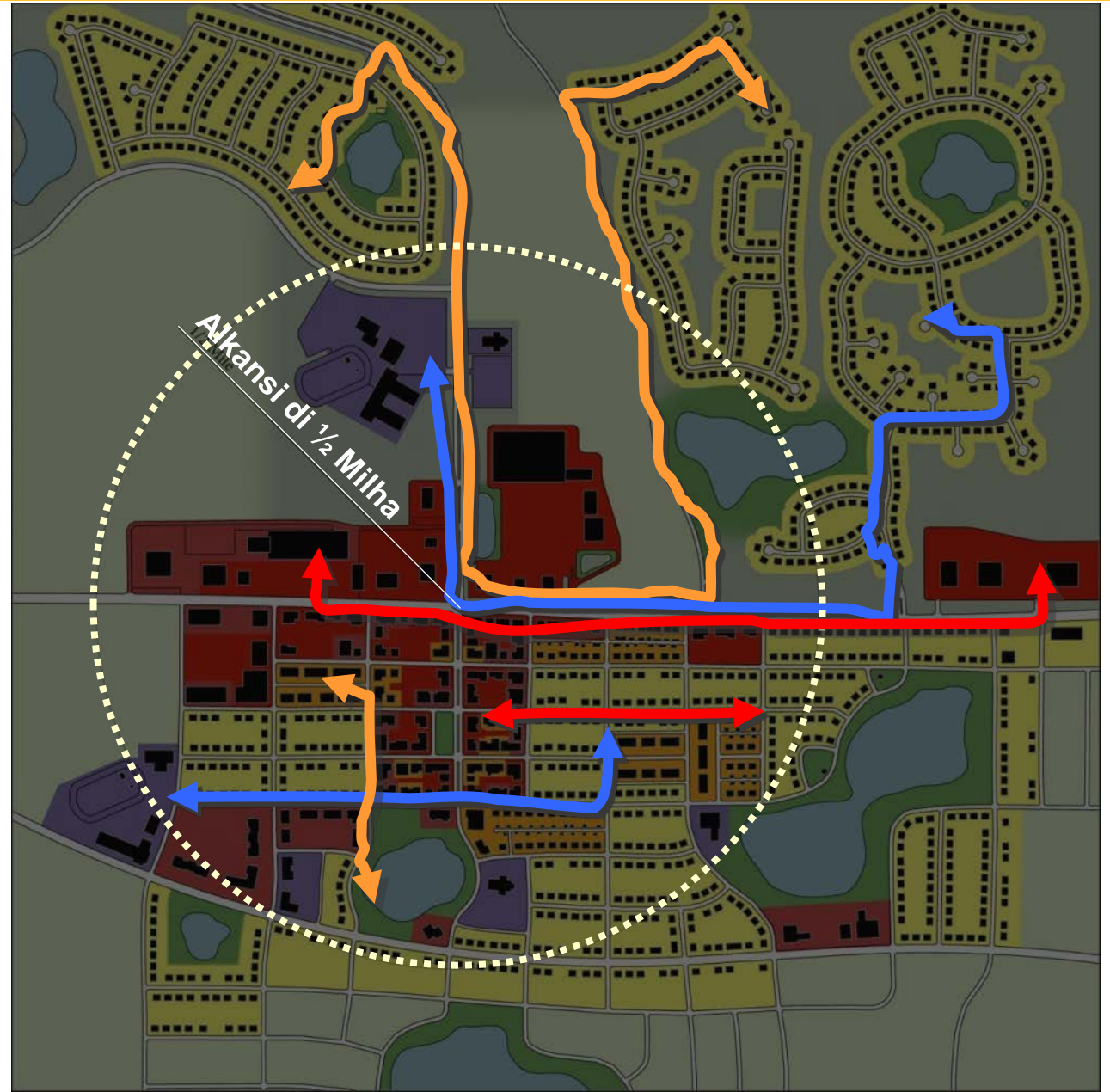
REDI LIGADU



INPLIKASONS DI TRANSPÓRTI

KUMUNIDADI
IZOLADU

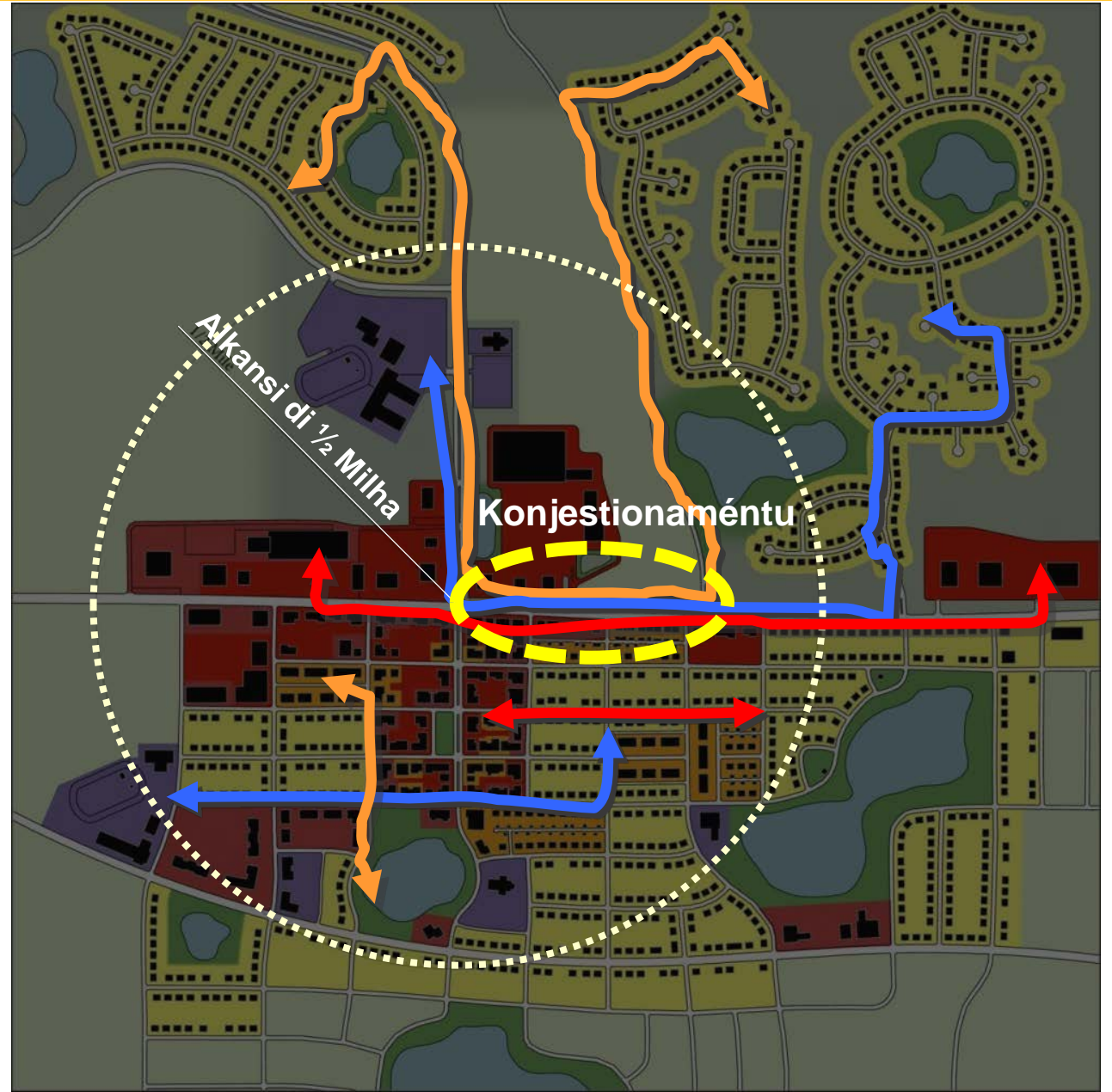
REDI LIGADU



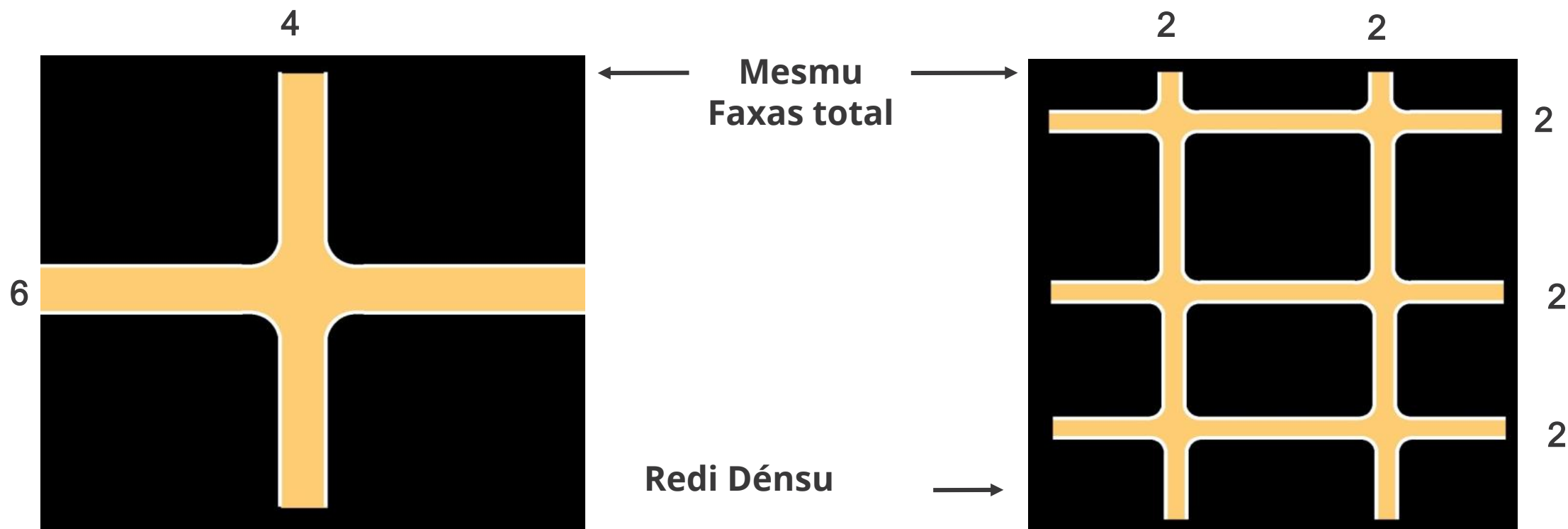
INPLIKASONS DI TRANSPÓRTI

KUMUNIDADI
IZOLADU

REDI LIGADU

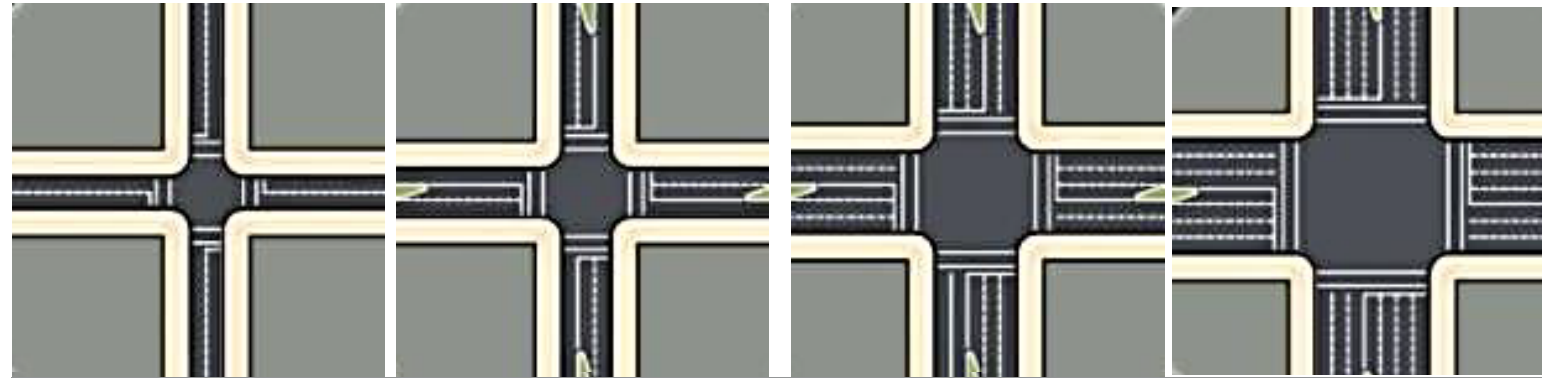


PAMÓDI KI REDI É INPURTANTI

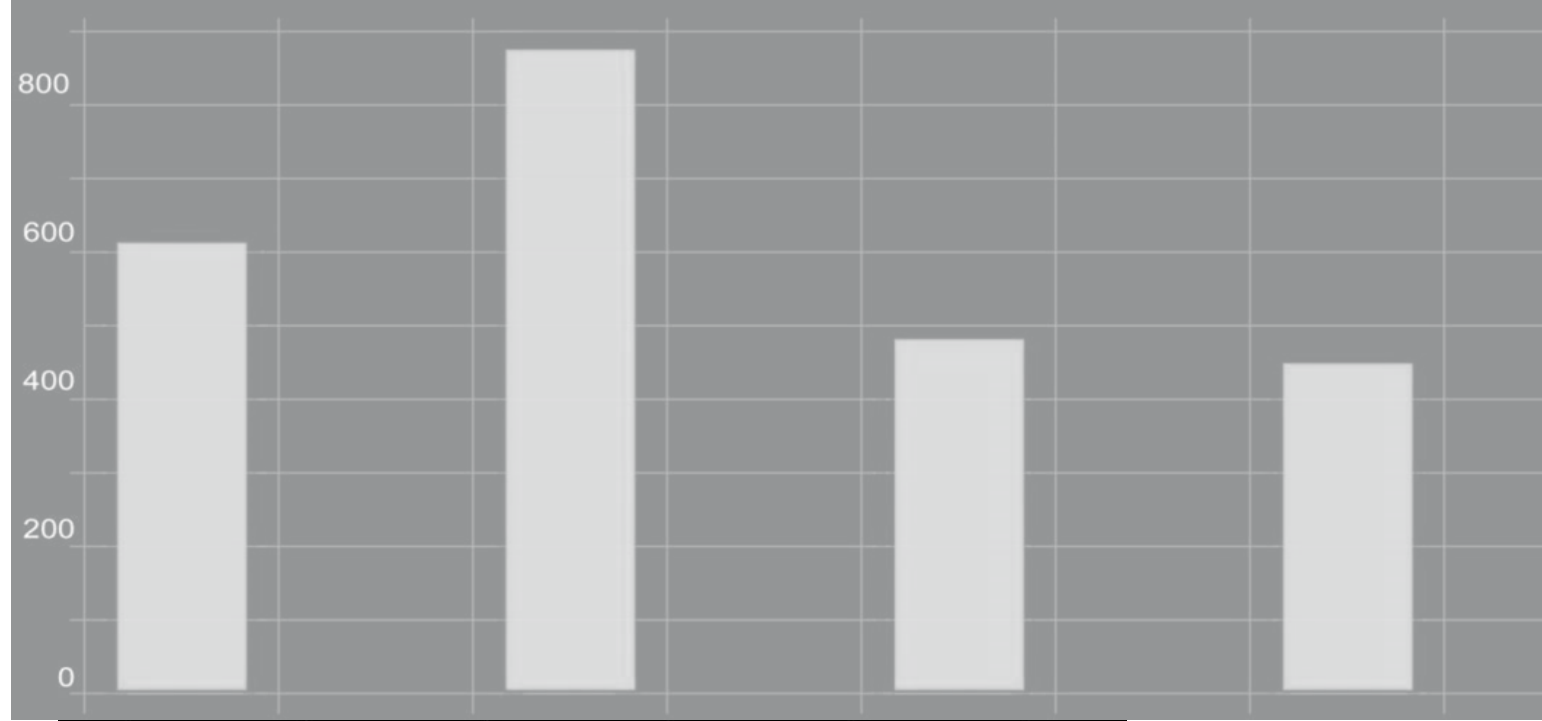


- Ta insentiva viajis multimodal
- Veículus ta anda ménus milhas
- Partilha viradas pa skérda
- Partilha ténpu di clearance
- Ténpu di sinal (di tránzitu) más ifisienti

KAPASIDADI DI FAXA ADISIONAL



Kapasidadi di Faxe Adisional
(veíkulus/óras)



Faxas pa tránzitu dirétu 2

2

4

Faxas di viraji 0

1

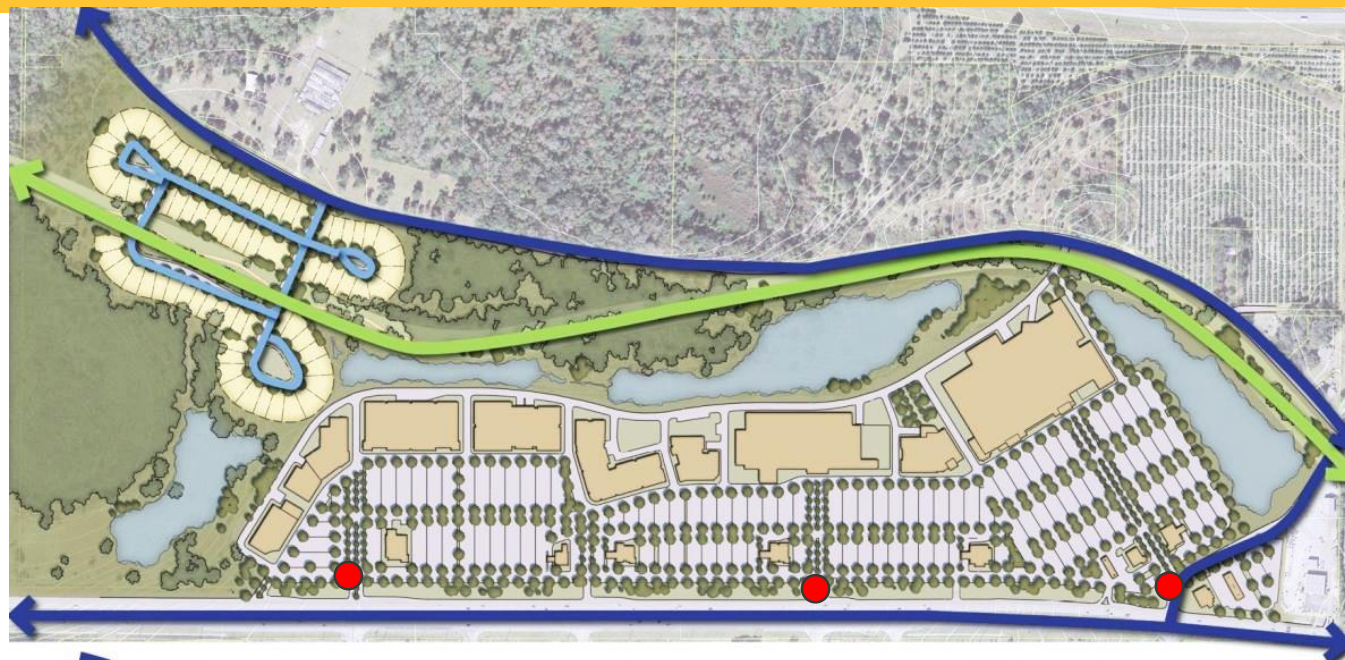
1

PLAN: Glover's Corner Dorchester

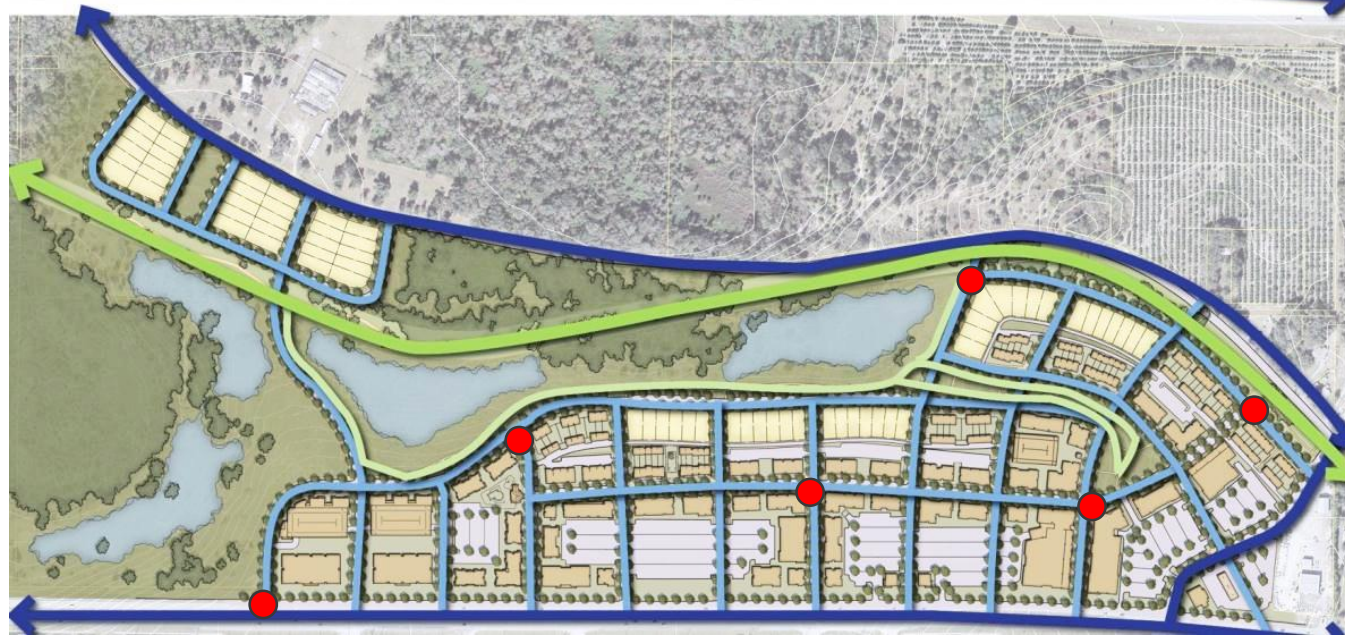
Prezerva, midjora y krese



ABORDAJI INTEGRADU DI UZU DI TXON & TRANSPÓRTI



Clermont, Florida
Senáriu A



Senáriu B

● Pusível paraji di Otokaru

— Strada ki dja izisti

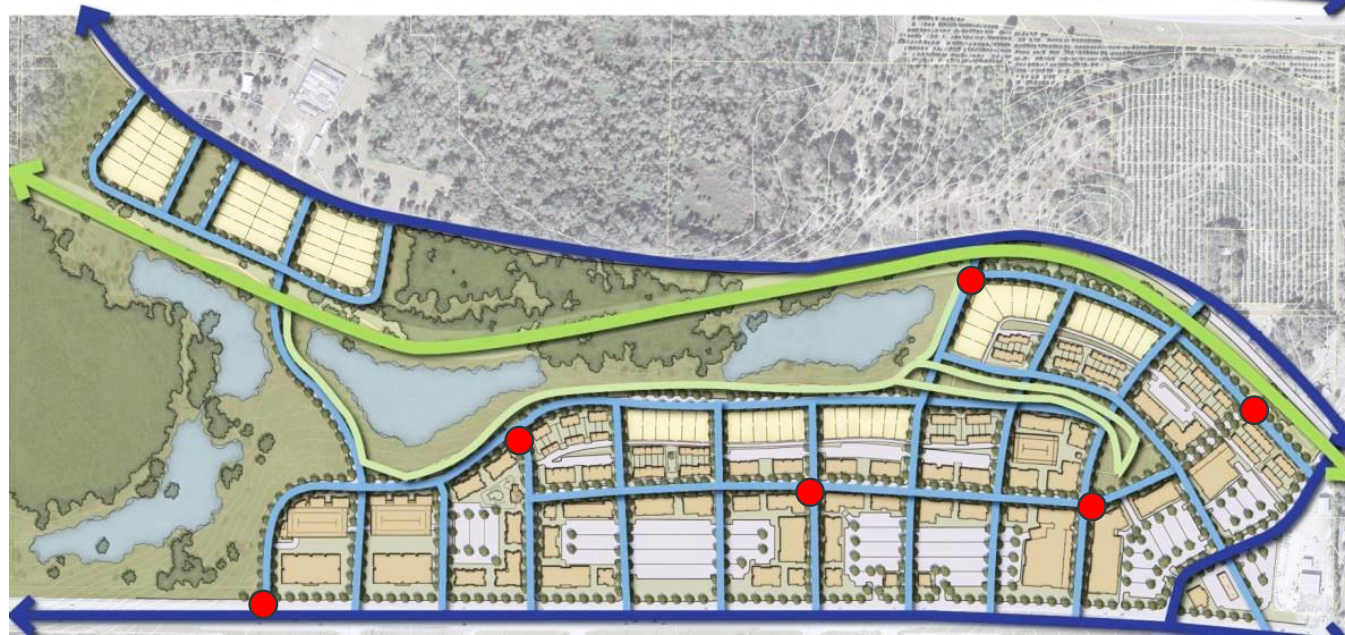
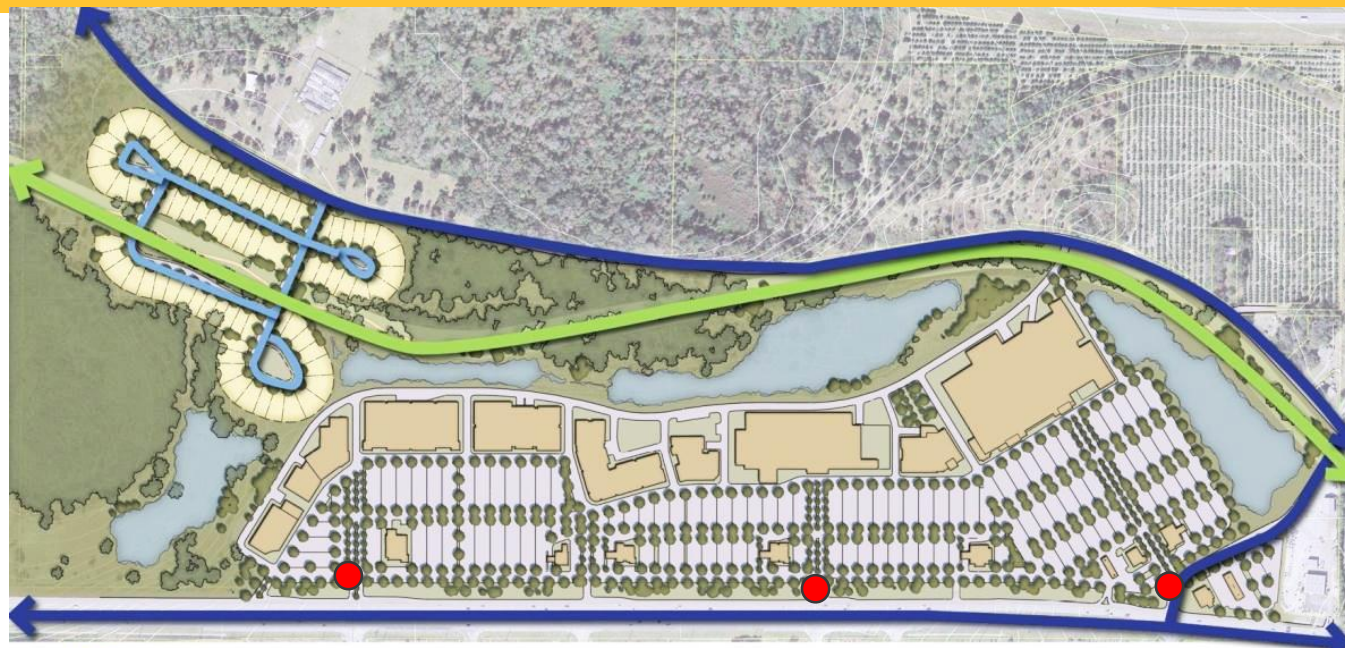
— Prupósta di Strada

— Kaminhu Multi-uzu ki dja izisti

— Prupósta di Kaminhu Multi-uzu

PLAN: Glover's Corner Dorchester

Prezerva, midjora y krese



ABORDAJI INTEGRADU DI UZU DI TXON & TRANSPÓRTI

Igual Númeru di inprégus

400% más unidatis di abitason

50% ménus viajis di karu na oráriu d maior tránzitu

500% más métrus linear di paseius & lugar pa bisiklétas

 Pusível paraji di Otokaru

 Strada ki dja izisti

 Prupósta di Strada

 Kaminhu Multi-uzu ki dja izisti

 Prupósta di Kaminhu Multi-uzu

Clermont, Florida

PLAN: Glover's Corner Dorchester

Prezerva, midjora y krese



4

Kondisons ki dja Izisti



Vista di Nórta di Dorchester na Glover's Corner

VIZON JERAL DI STUDU

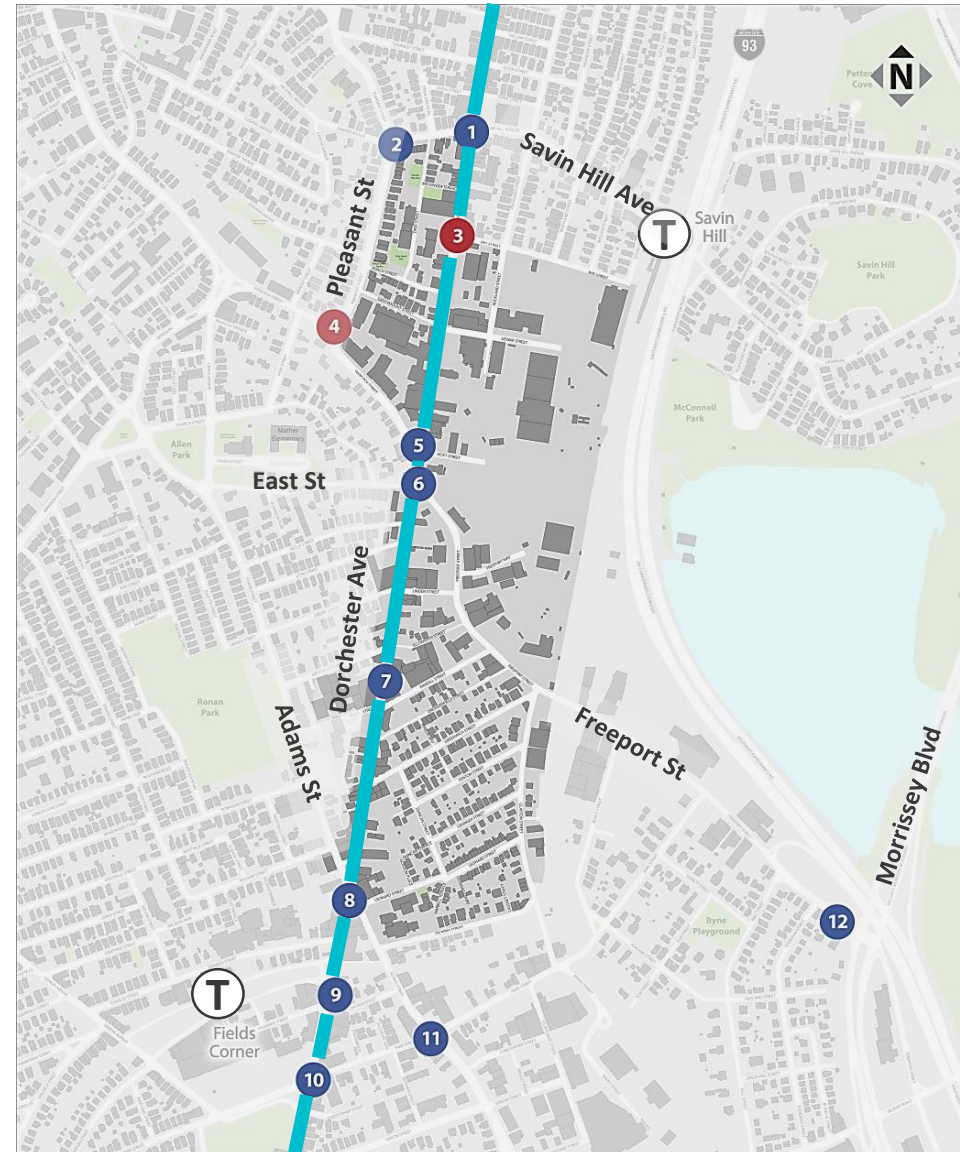
- 1 Kondisons ki dja Izisti
- 2 Midjorias Imediatu
- 3 Vizon di Longu prazu



Birdseye View of Glover's Corner

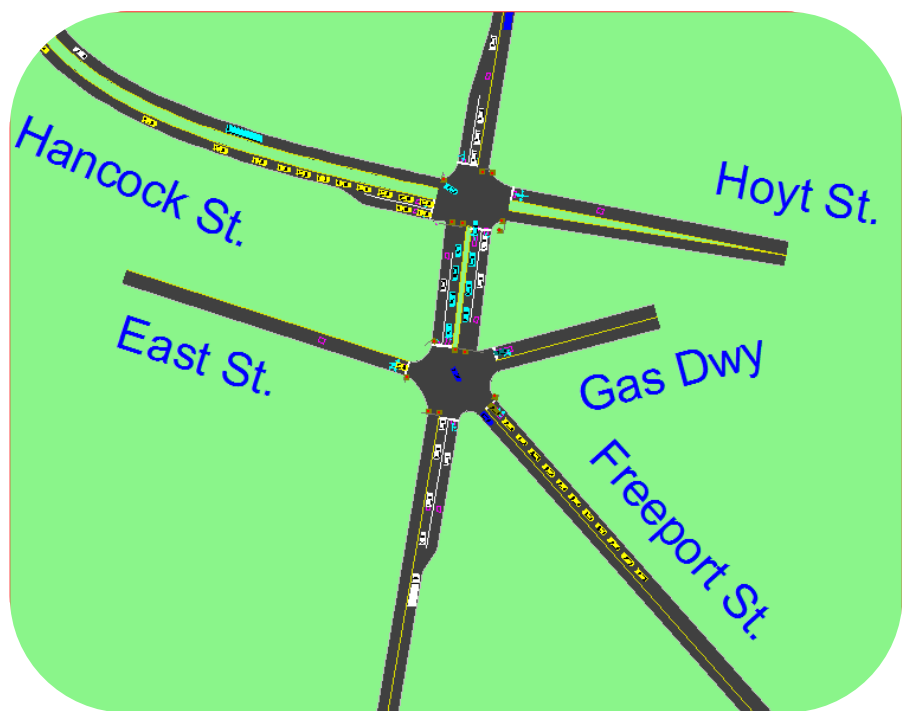
KOLÉTA DI DADUS

- Volumi di Tránzitu
- Volumi di Peon (pesoas ta anda)
- Volumi di Bisiklétas
- Pasajerus di MBTA
- Ozerbasons



Source: Kittelson & Associates

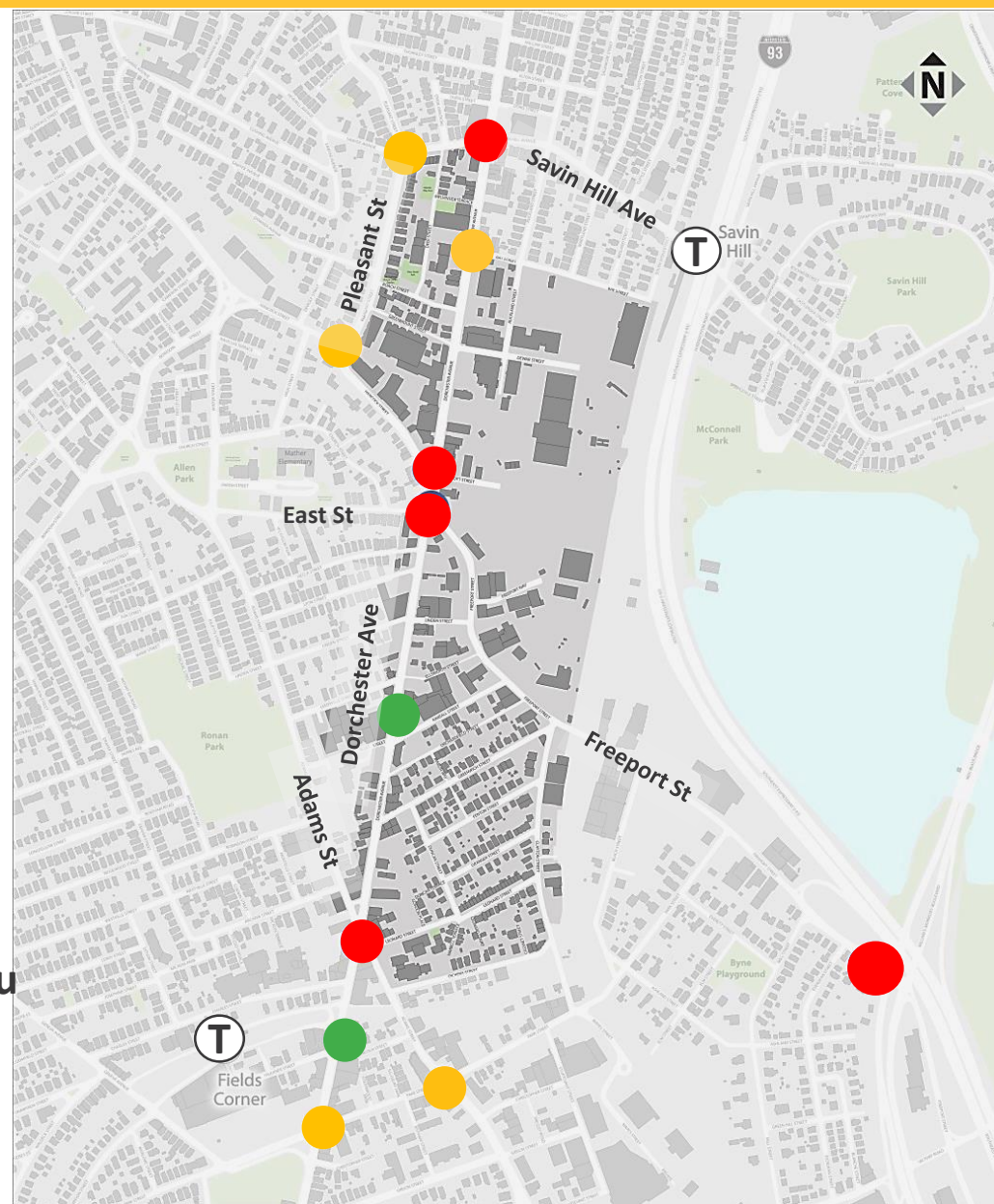
MUDÉLU DI TRÁNZITU KI DIZENVOLVEDU PA ÁRIA DI STUDU DI GLOVER'S CORNER



Mudélu di Tránzitu ki Dizenvolvedu pa Ária di Studu di Glover's Corner, Source: Kittelson & Associates

Atrazu di Kruzaméntu

- Altu
- Moderadu
- Baxu

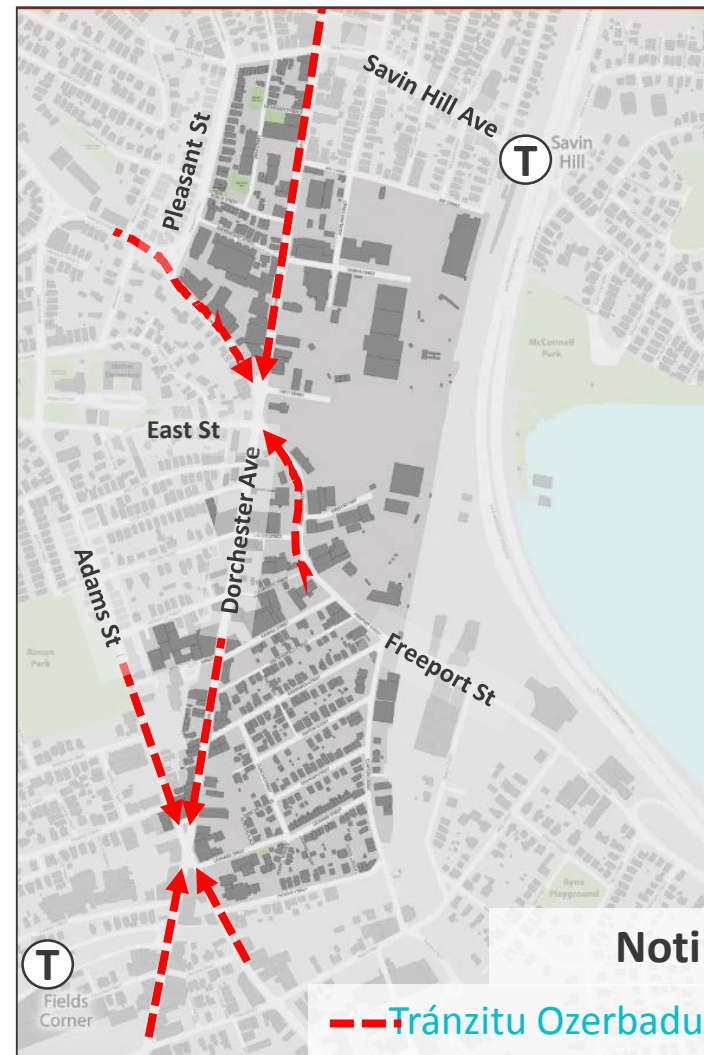
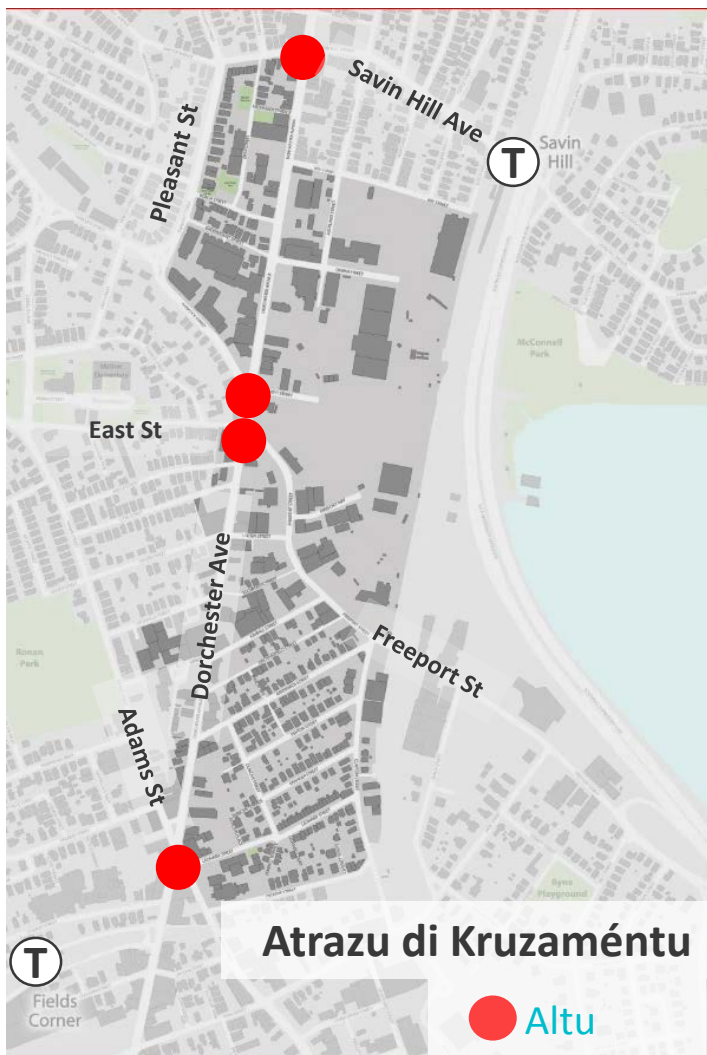


PLAN: Glover's Corner Dorchester

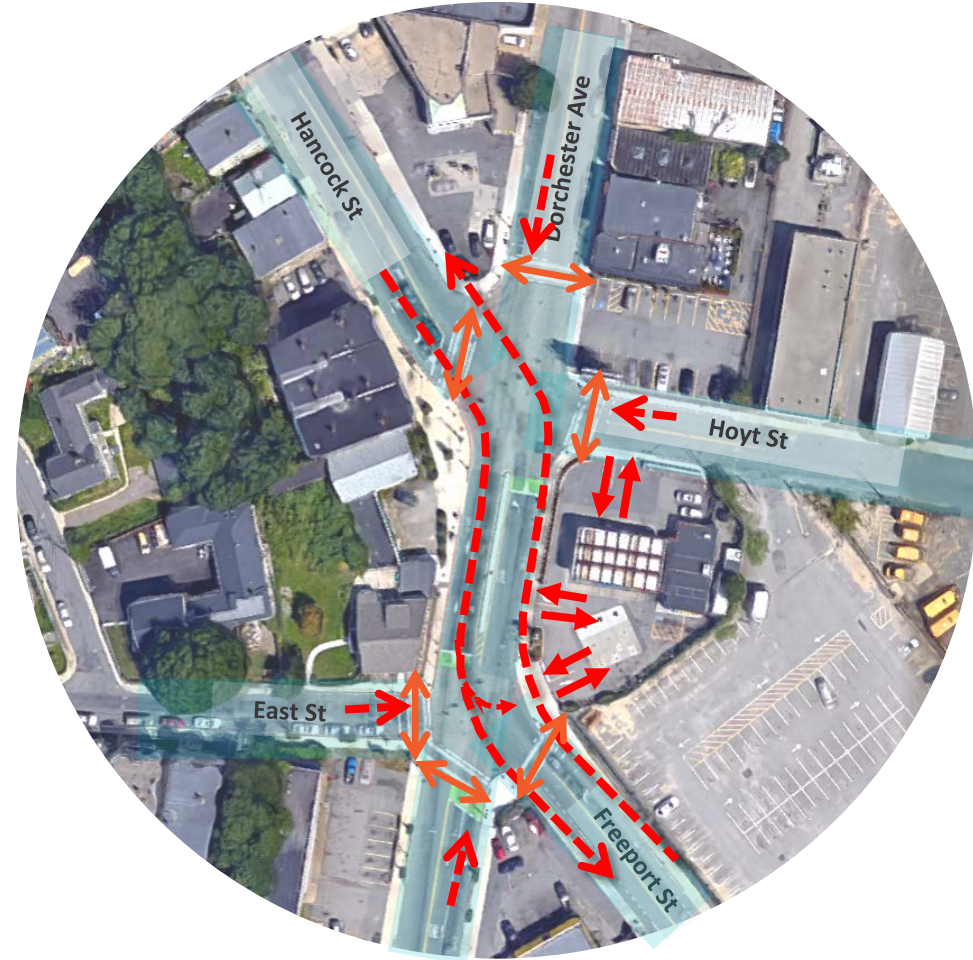
Prezerva, midjora y krese



ATRAZU DI KRUZAMÉNTU NA DORCHESTER AVENUE



KRUZAMÉNTUS KONPLÉKSU



Dorchester Avenue y Freeport Street & Hancock Street

OPORTUNIDADIS DI RIDUZI KONJESTIONAMÉNTU

- Regula ténpu di sinal (di tránzitu)
- Muda phasing di peons
- Konsolida/muda stasionaméntu & parajis di otokaru pa otu lugar
- Kria faxas di viraji
- Ilimina ó konsolida ranpas di kalsada



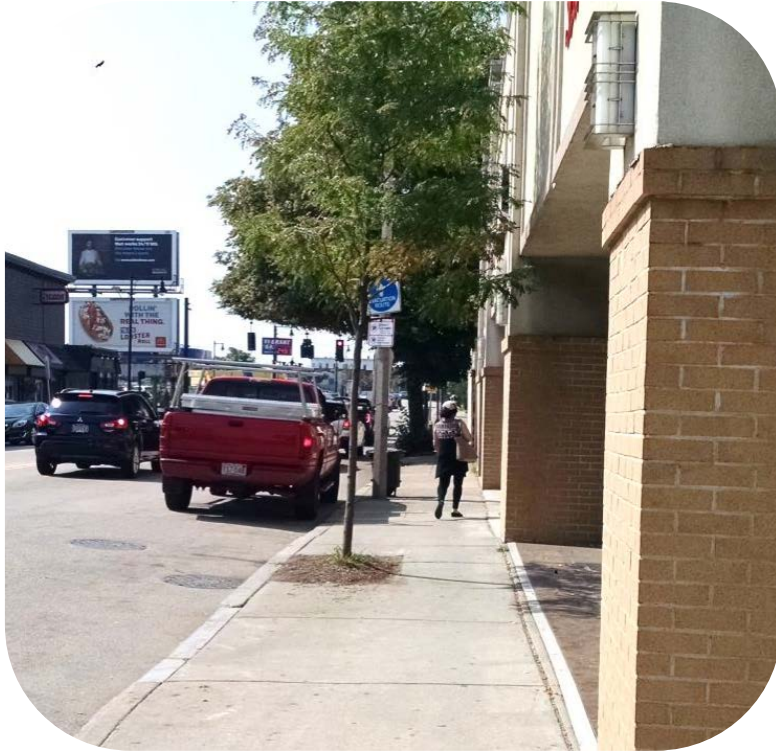
Kondisons ki dja Izisti, Glover's Corner

PLAN: Glover's Corner Dorchester

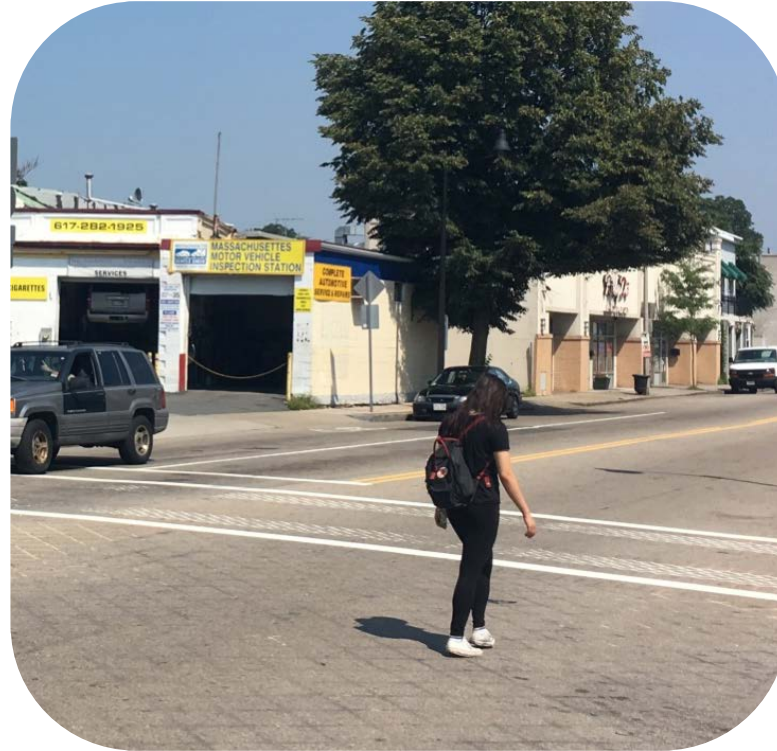
Prezerva, midjora y krese



ANBIENTI PA PEONS & PA ANDA



Kondisons ki dja Izisti, Glover's Corner



Kondisons ki dja Izisti, Glover's Corner



Kondisons ki dja Izisti, Glover's Corner

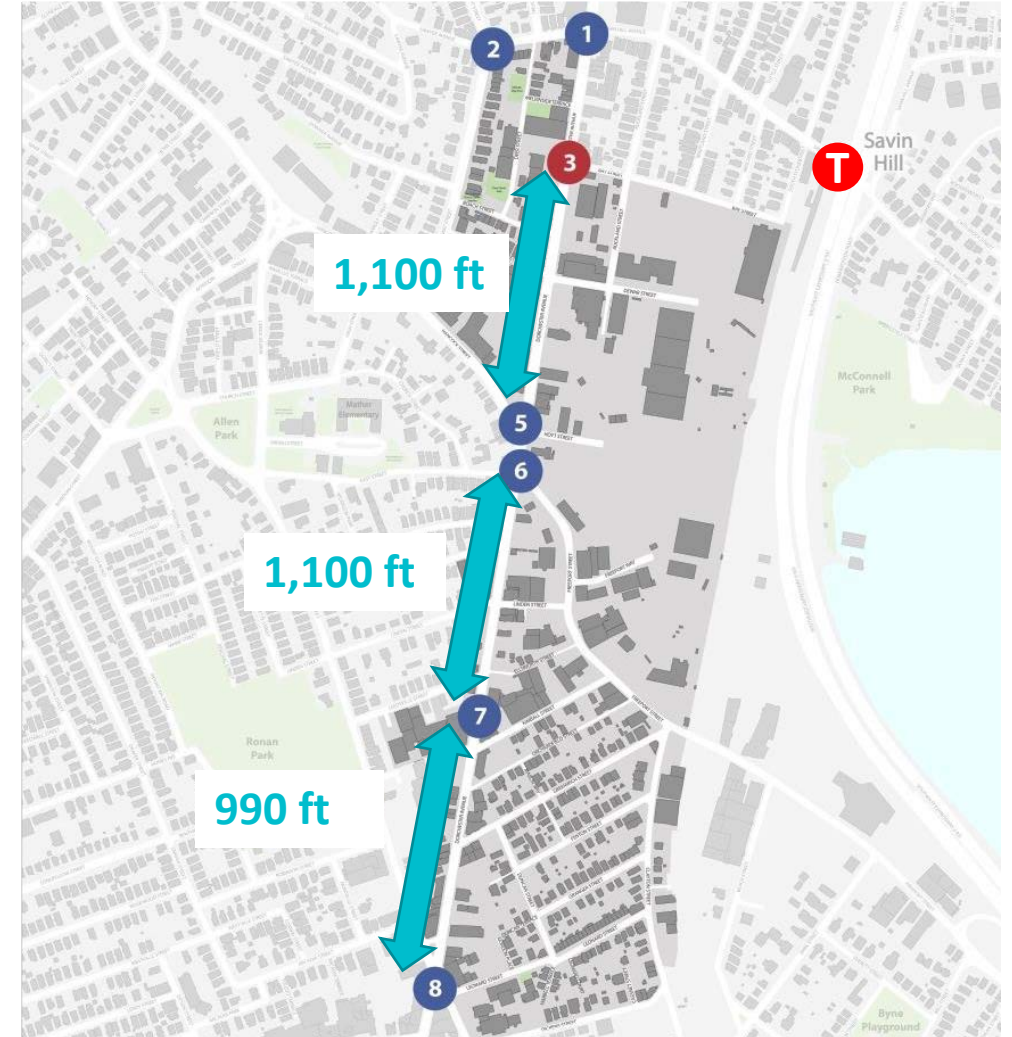
PLAN: Glover's Corner Dorchester

Prezerva, midjora y krese

DISTANSIA ENTRI PASADERAS



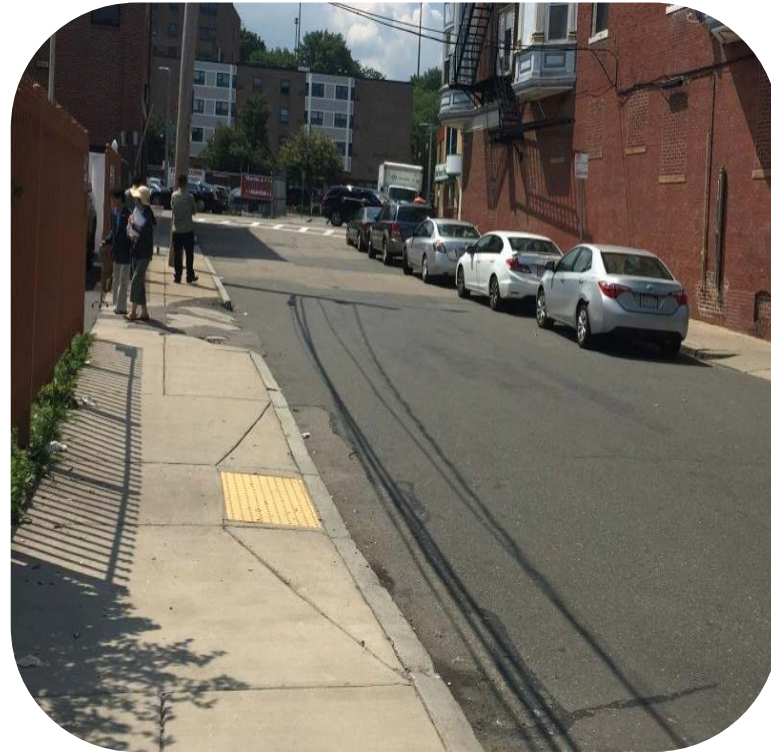
Kondisons ki dja Izisti, Glover's Corner



MANUTENSON Y ASESIBILIDADI



Kondisons ki dja Izisti, Glover's Corner



Kondisons ki dja Izisti, Glover's Corner



Kondisons ki dja Izisti, Glover's Corner

KRIA UN REDI DI BISIKLÉTAS KONFORTÁVEL



Kondisons ki dja Izisti, Glover's Corner



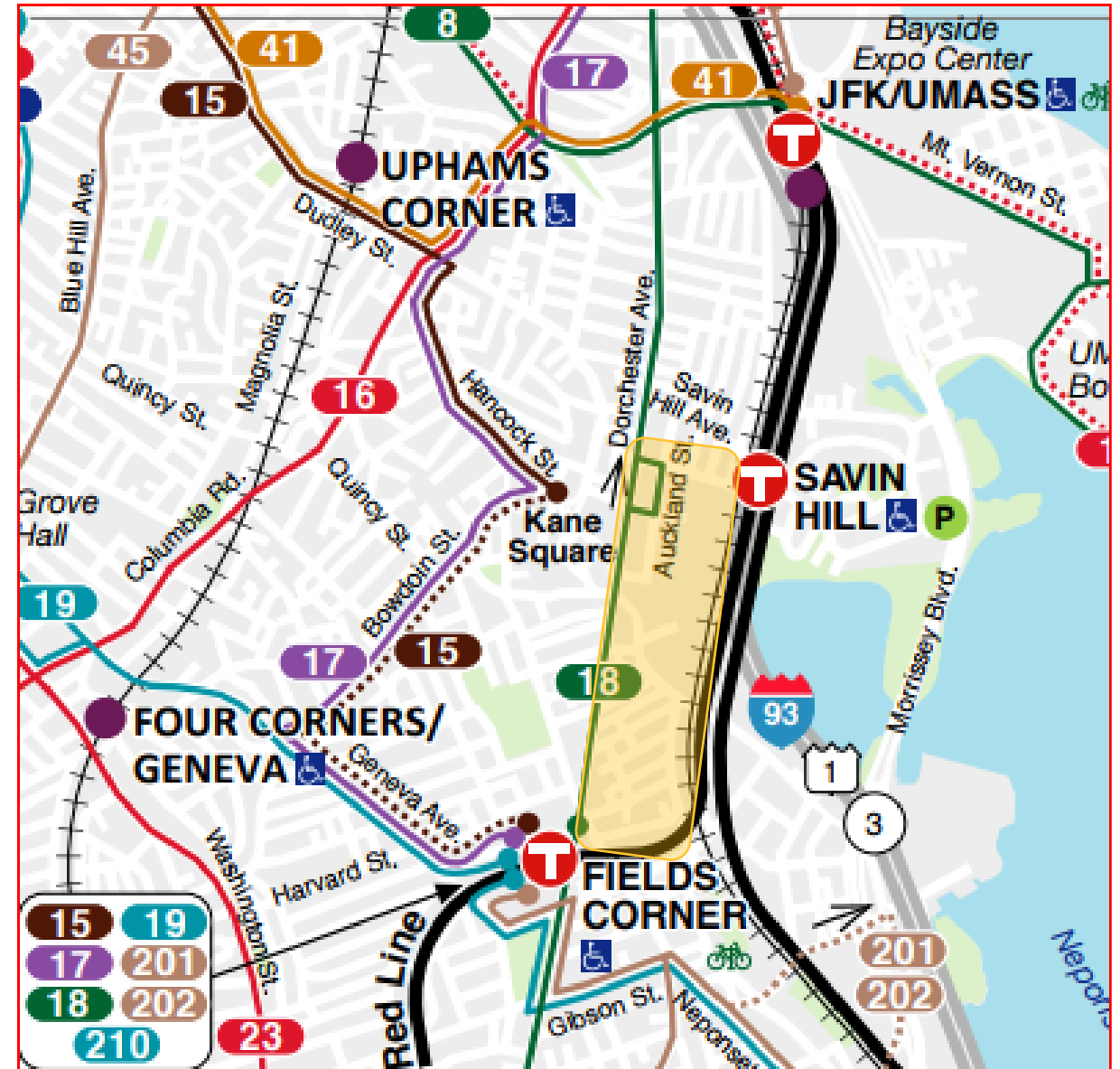
Kondisons ki dja Izisti, Glover's Corner



Kondisons ki dja Izisti, Glover's Corner

TRÁNZITU DI MBTA

- Red Line (linha burmedju)
 - Savin Hill
 - Fields Corner
- Róta 18
 - Distansia Kunpridu entri veíkulus
 - Paralélus di Red Line
- Sirvisus Adisional na Fields Corner
 - Róta 15
 - Róta 17
 - Róta 19
 - Róta 201-202
 - Róta 210

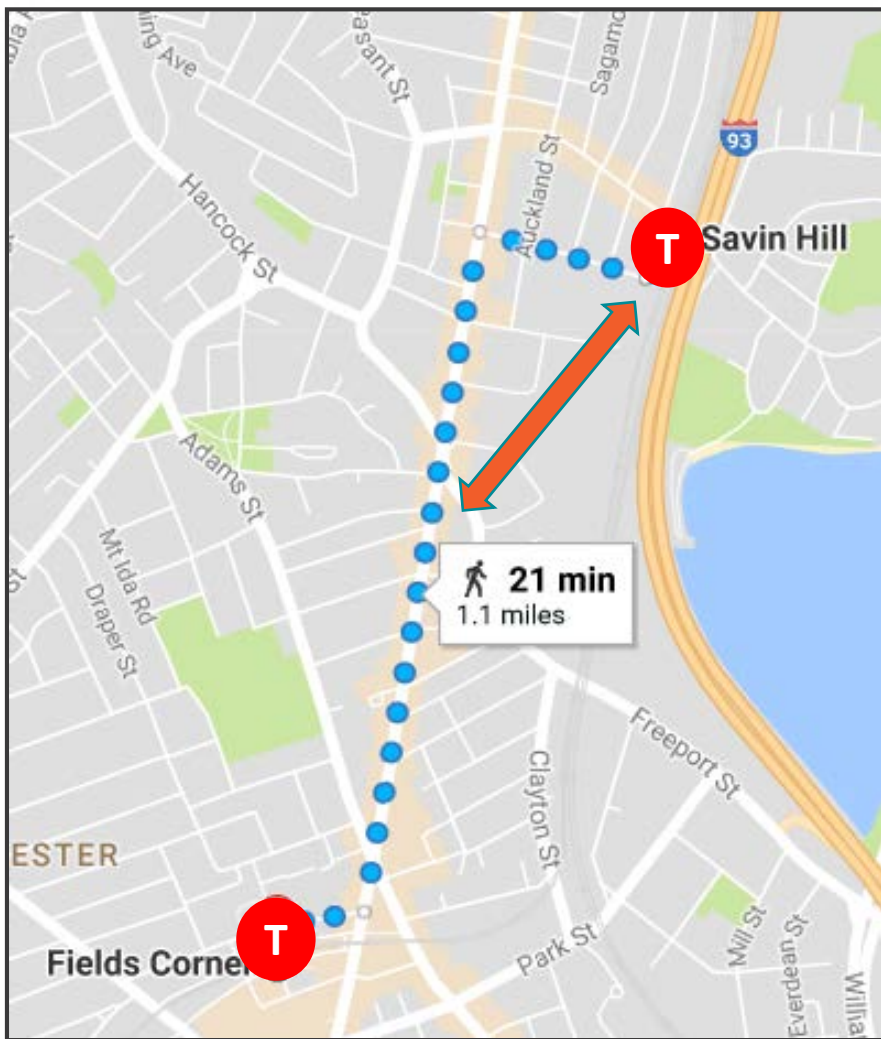


PLAN: Glover's Corner Dorchester

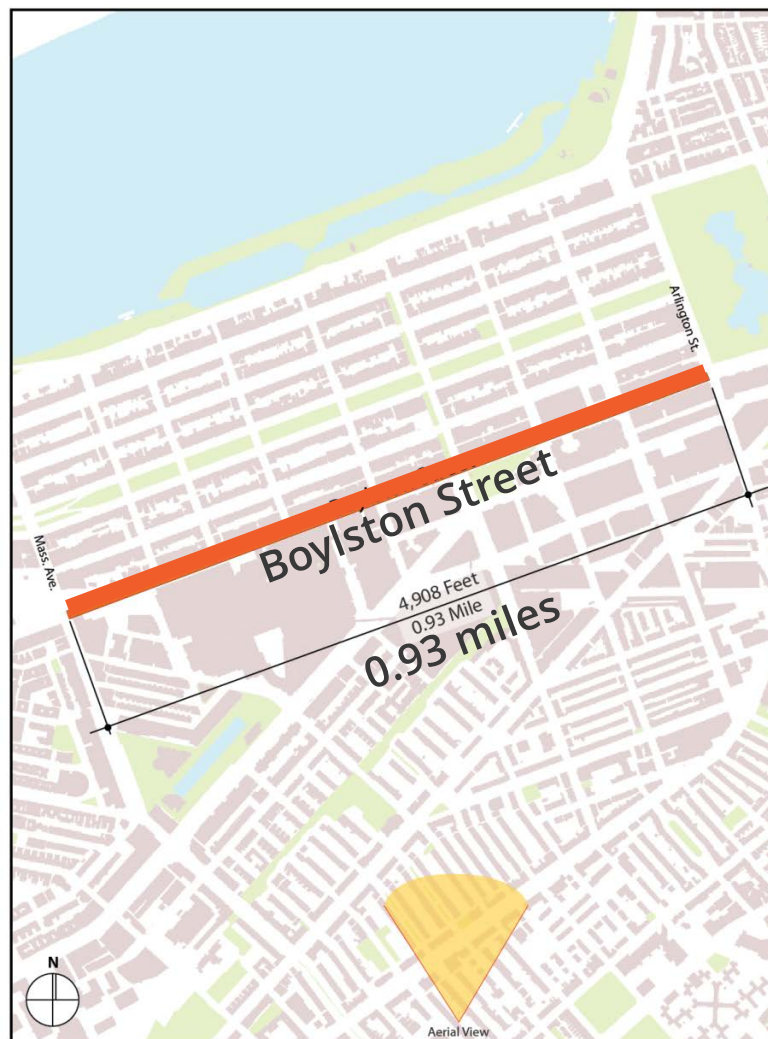
Prezerva, midjora y krese



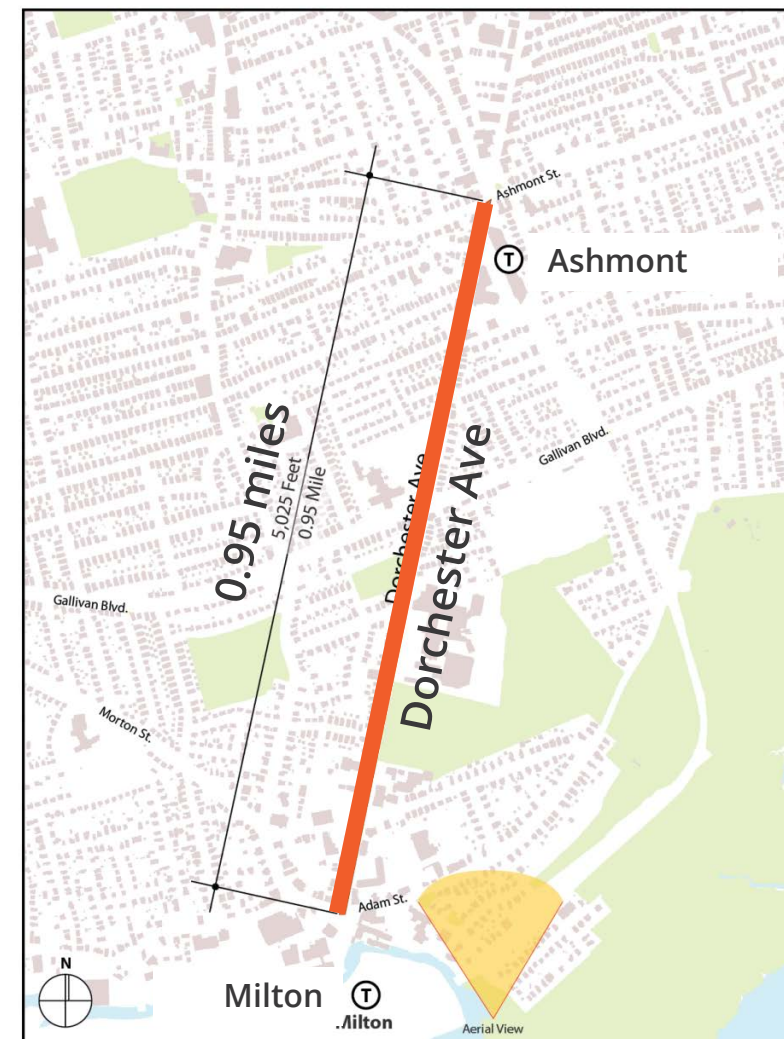
FASILIDADI DI ANDA TI STASONS DI MBTA



Dorchester Ave, Dorchester – 1.1 miles



Boylston St. Back Bay – 0.93 miles



Dorchester Ave, Dorchester – 0.95 miles

RIZUMU & PRÓSIMUS PASU

- Rizumu
 - Dorchester Avenue sensível a frikson di ruas lateral (di ladu)
 - Kapasidadi di kruzaméntu limitadu pa un faxa na kada direson
 - Atrazus di txeu ténpu pa veíkulus y peons
 - Ambienti diskonfortavel pa anda y na Bisikléta
- Prósimus Pasu
 - Midjorias Imediatu
- Planning Exercise
 - Stabelese un redi di stradas pa futuro
 - Kria nóvus ligason



PLAN: Glover's Corner Dorchester

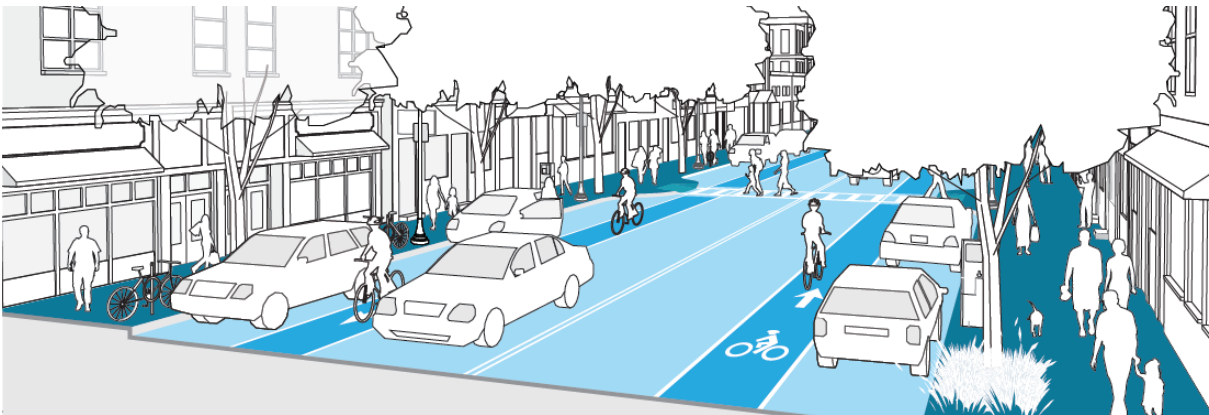
Prezerva, midjora y krese



STREET NETWORK TODAY



Dorchester Avenue at Freepoint Street



Neighborhood Main Street. Illustrative Example from Complete Streets (2013)

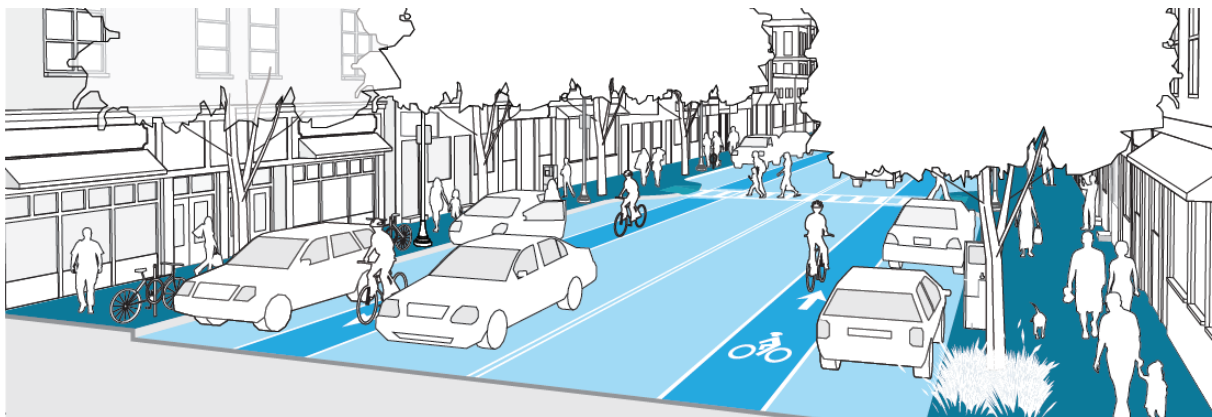


PLAN: Glover's Corner Dorchester

Prezerva, midjora y krese



REDI KONSEITUAL PA FUTURU



Rua Prinsipal di Zóna. Izénplu Ilustrativu di Ruas Konplétu (2013)



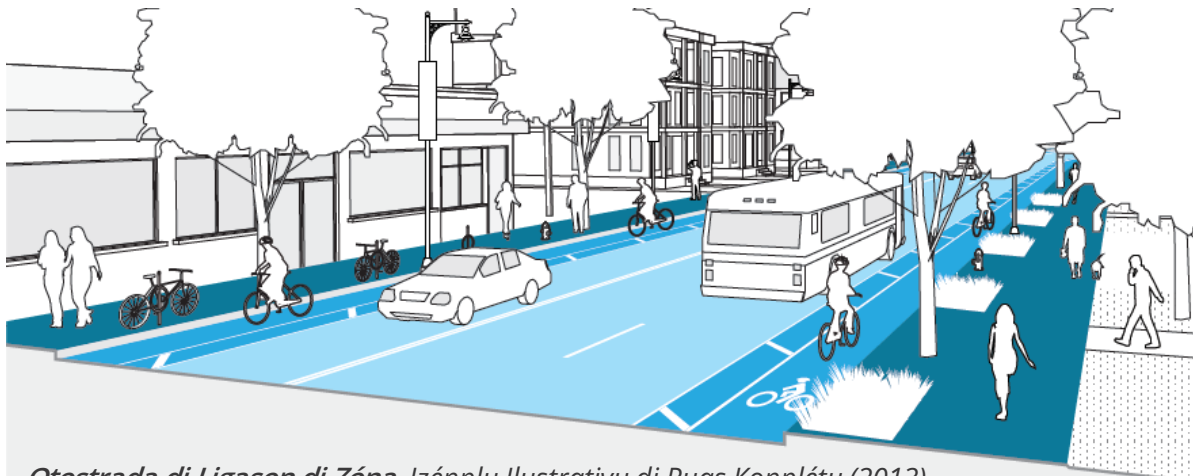
PLAN: Glover's Corner Dorchester

Prezerva, midjora y krese

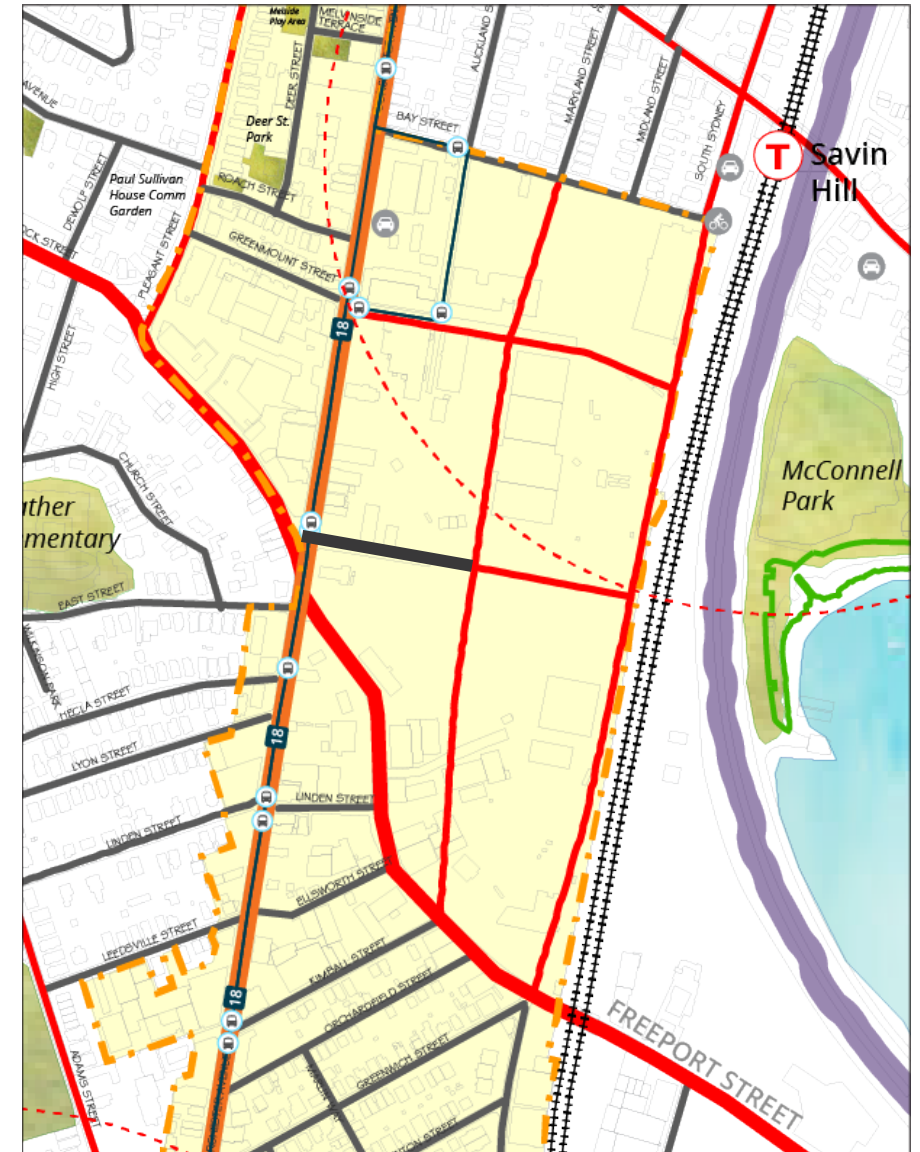


REDI KONSEITUAL PA FUTURU

Otostrada di Ligason di Zóna



Otostrada di Ligason di Zóna. Izénplu Illustrativu di Ruas Konplétu (2013)



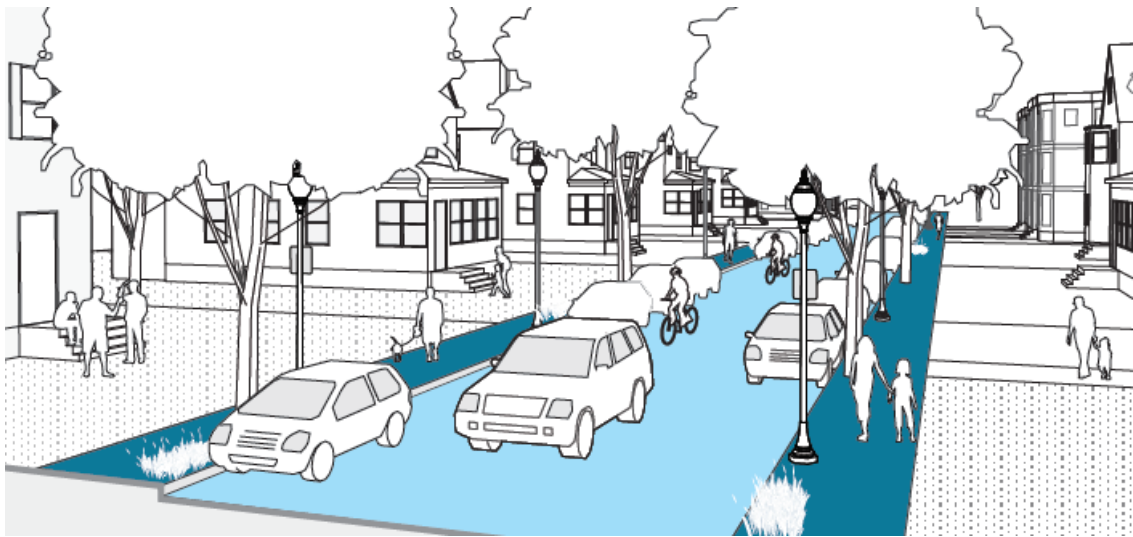
PLAN: Glover's Corner Dorchester

Prezerva, midjora y krese



REDI KONSEITUAL

Ruas y Kaminhus di Zóna



Zóna Rezidensial. *Izénplu Ilustrativu di Ruas Konplétu* (2013)



PLAN: Glover's Corner Dorchester

Prezerva, midjora y krese



5

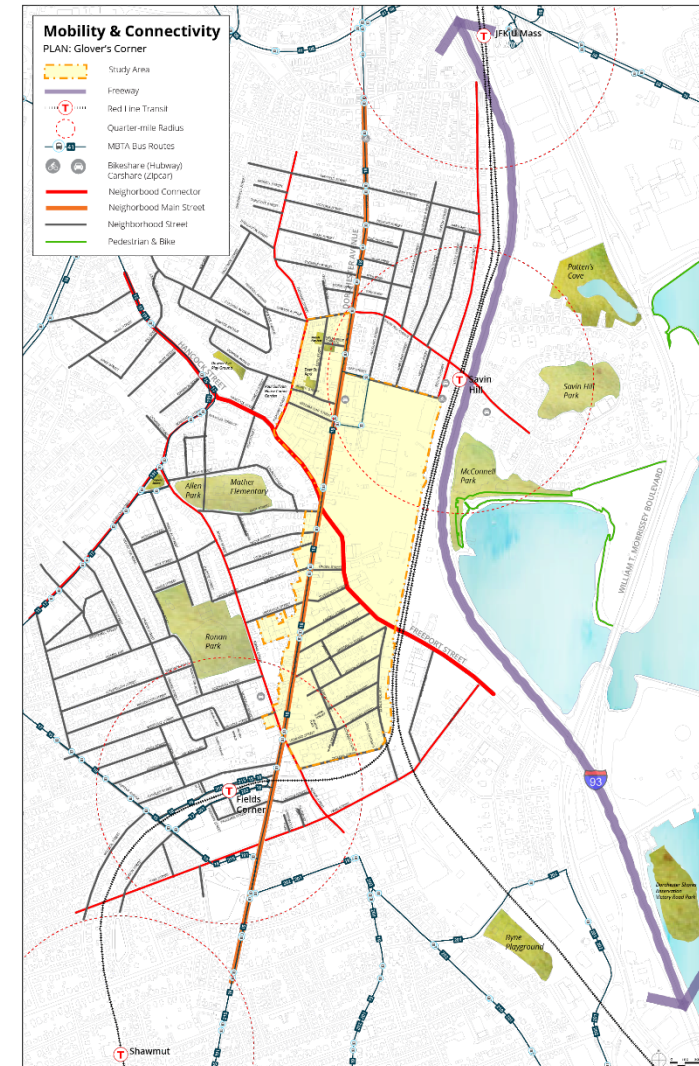
Izersísiu di Mobilidadi & Konetividadi



ATIVIDADI DI MOBILIDADI & KONETIVIDADI

Objetivus

- En ekipa, kria un vizon di mobilidadi & Konvetividadi pa Ária di Studu.
- Ilustra maneras di insentiva **maneras diferentes di disloka**.
- Mobilidadi & Konetividadi ta bazia na workshops antirior y ta ben afeta otus tema di planiaméntu ki nu ta ben dibati na workshops na futuro:
 - Workshop *di 25 di otubru sobri uzu di txon*
 - Karater di Zóna
 - Abitason & Asesibilidadi di présu
 - Inprégus & Inprézas
 - Rizisténsia a Klima & Sustentabilidadi
 - Spasu Abértu



IZERSÍSIU DI MOBILIDADI & KONETIVIDADI

Módi ki nu ta Disloka?

- Pensa na módi ki aktualmenti bu ta disloka déntu di zóna y di sidadi.
- Pensa na módi ki bu prifiriba disloka déntu di zóna y di sidadi.

Módi ki Nu ta Disloka?

PLAN: Glover's Corner

Workshop di 29 di nuvénbru di 2017

Módi ki Nu ta Disloka?	Anda (pé na txon)	Bisikléta	Karu Móta	Otokaru	Konboiu (metro-politanu)	Konboiu	Otu (Lyft/Uber, Taxi, Zipcar, The Ride, Work Shuttle, etc.)
Módi ki bu ta bai pa trabadju ó skóla?							
Módi ki bu ta bai pa otus lugar déntu di ó pértu di Ária di Studu?							
Módi ki bu ta bai pa otus lugar fóra di Ária di Studu?							
Módi ki bu ta prifiri disloka (mundu perfetu; aspirason)?							

Númeru di Méza: _____

IZERSÍSIU DI MOBILIDADI & KONETIVIDADI

Tipus Diferenti di Karater di Rua

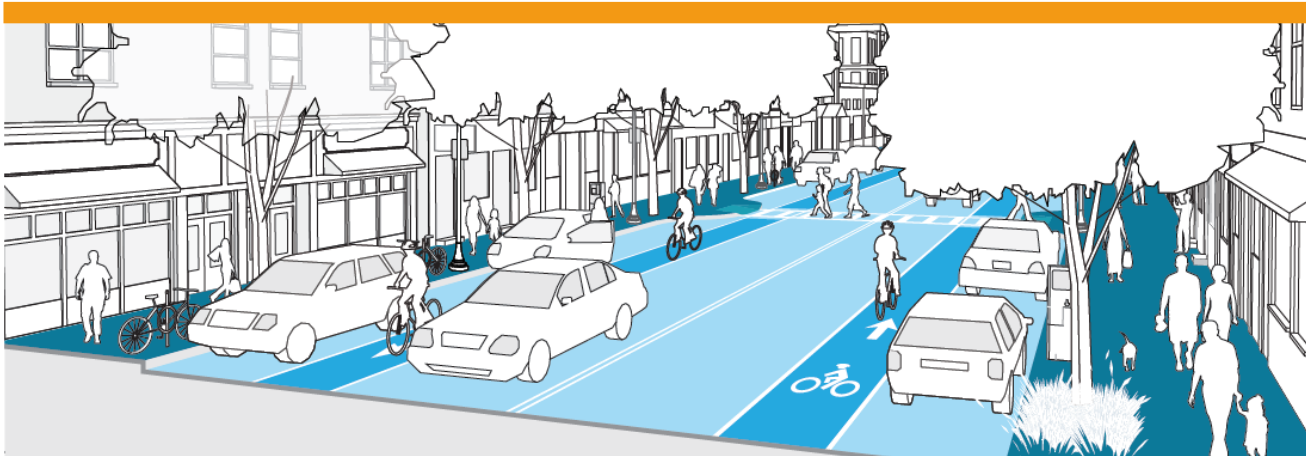
Otostrada

Rua Prinsipal di
Zóna

Rua Prinsipal
di Zóna

Rua di Zóna

Peon & Bisikléta



Izénplu di Rua Prinsipal di Zóna

Gia di Ruas Konplétu (2013)



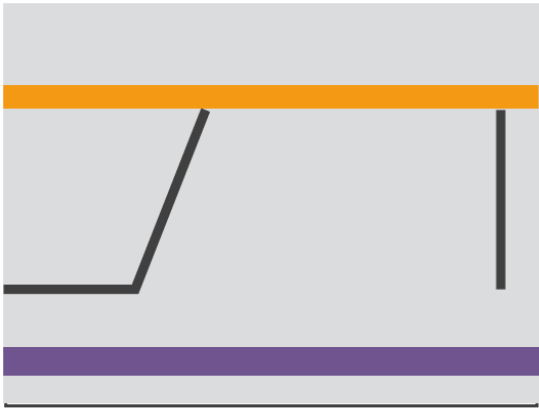
Izénplu di Peon & Bisikléta

Skérda: Winthrop Street, Harvard Square

Direita: Boston Esplanade

IZERSÍSIU DI MOBILIDADI & KONETIVIDADI

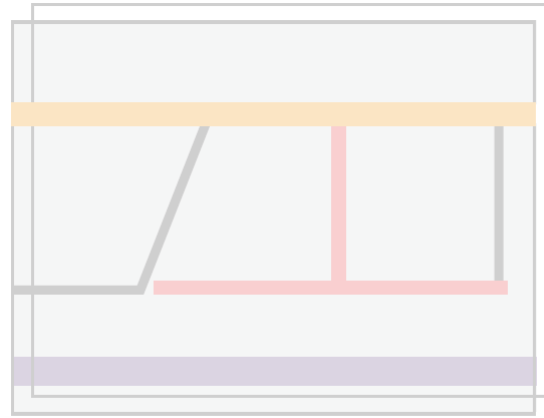
Instrusons di Atividadi



Base Map

Pasu 1: Dibati

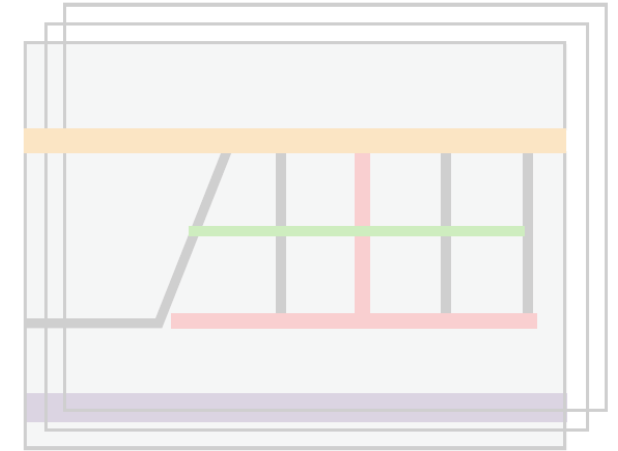
Dibati transpórti ki dja izisti na zóna



Neighborhood Connector

Step 2: Key Connections

Sketch new, key connections in the neighborhood on the transparencies.



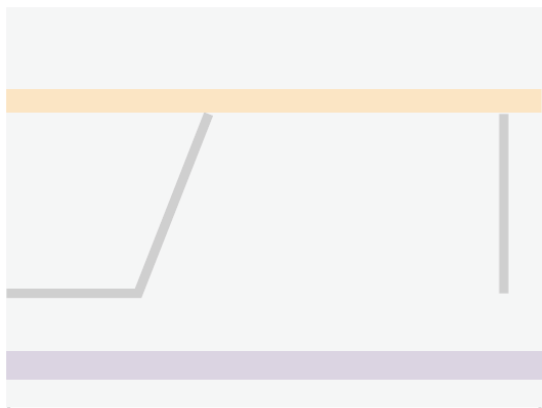
Neighborhood Streets & Path Layer

Step 3: Neighborhood Streets and Paths

Sketch new neighborhood streets and pedestrian & bike path connections on the transparencies.

IZERSÍSIU DI MOBILIDADI & KONETIVIDADI

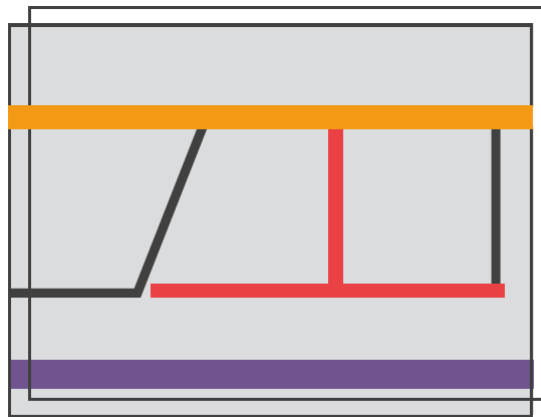
Instrusions di Atividadi



Base Map

Step 1: Discuss

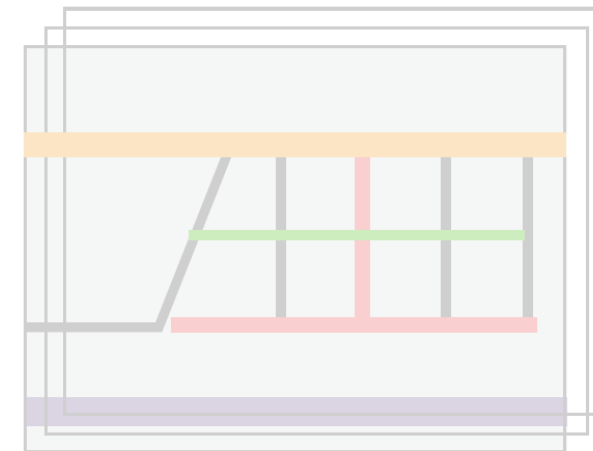
Discuss existing transportation conditions in the neighborhood.



Neighborhood Connector

Pasu 2: Ligasons Isensial

Na transparencias (slides fotográfiku), dizaña ligasons nóvu y isensial na zóna.



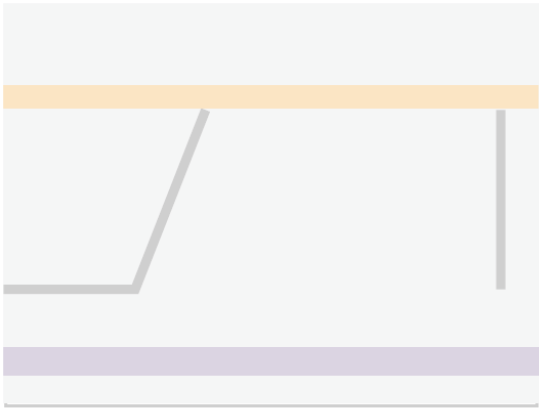
Neighborhood Streets & Path Layer

Step 3: Neighborhood Streets and Paths

Sketch new neighborhood streets and pedestrian & bike path connections on the transparencias.

IZERSÍSIU DI MOBILIDADI & KONETIVIDADI

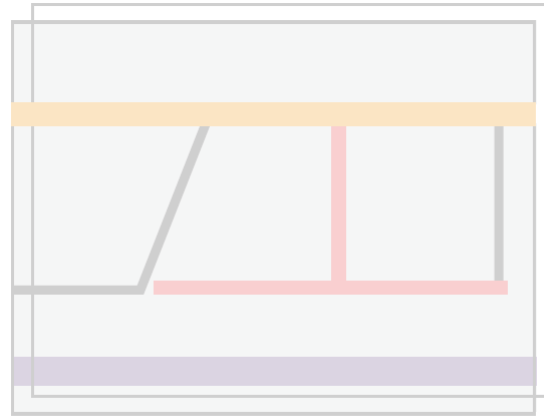
Instrusions di Atividadi



Base Map

Step 1: Discuss

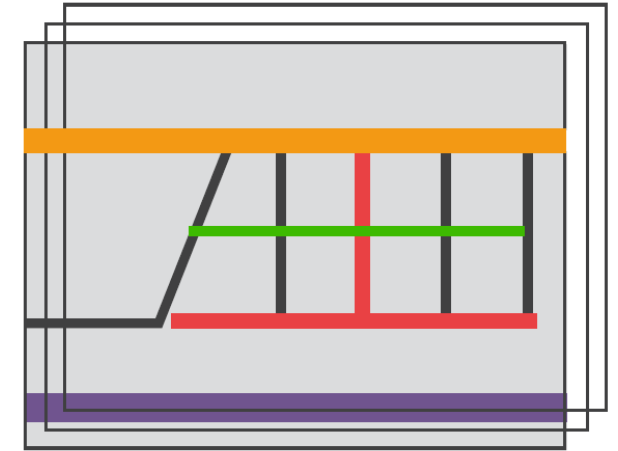
Discuss existing transportation conditions in the neighborhood.



Neighborhood Connector

Step 2: Key Connections

Sketch new, key connections in the neighborhood on the transparencies.



Neighborhood Streets & Path Layer

Pasu 3: Ruas y Kaminhus di Zóna

Na transparencies, dizaña nóvus rua y ligasons pa kaminhus di peons & bisiklétas.

RIKURSUS DI SIDADI

Si bo ó algen ki bu konxe sa ta infrenta dislokason (mudansa pa otu lugar) nes muméntu li, komu rezidenti ó inpréza, pur favor purgunta funsionárius sobri kes siginti kontatu y rikursu:

Gabineti di Dizenvolviméntu di Trabadjadoris

[617-635-5283](tel:617-635-5283) | owd.boston.gov

Boston Home Center

[617-635-4663](tel:617-635-4663) | bostonhomecenter.com

Gabineti di Stabilidadadi di Abitason y Asistensia di Imerjénsia

[617-635-4200](tel:617-635-4200) | rentalhousing@boston.gov | Boston.gov/housing/office-housing-stability

Gabineti di Dizenvolviméntu di Inprézas Pikinóti

[617-635-0355](tel:617-635-0355) | boston.gov/departments/small-business-development

KONEKTA KU EKIPA DI PLANIAMÉNTU

Site

bit.ly/PlanGlovers

Viktorija Abolina

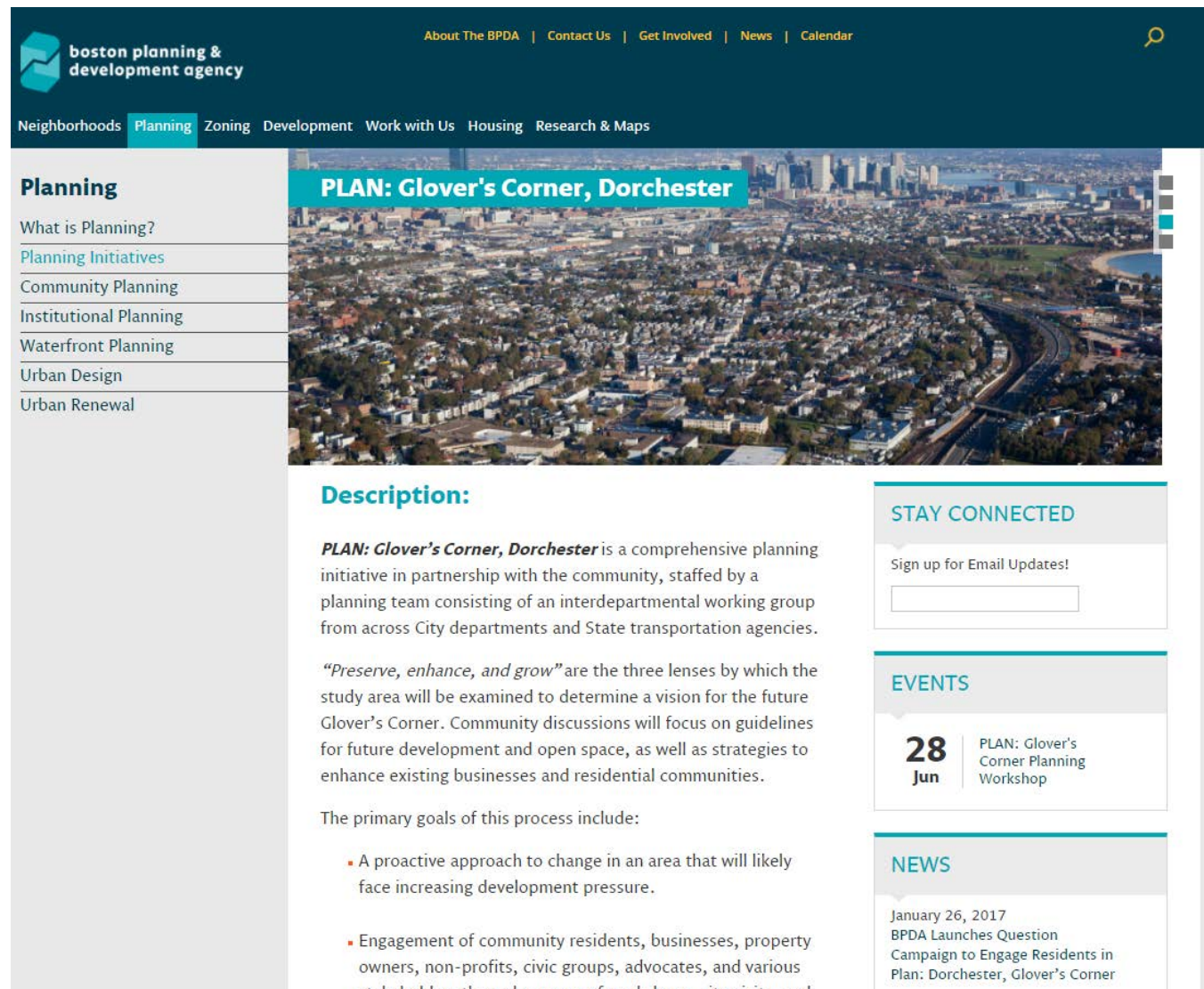
Viktorija.Abolina@Boston.gov

Cecilia Nardi

Cecilia.Nardi@Boston.gov

Partilha

 #PlanGlovers @BostonPlans



The screenshot shows the website for the PLAN: Glover's Corner, Dorchester project. The header includes the BPDA logo and navigation links: About The BPDA, Contact Us, Get Involved, News, and Calendar. A secondary navigation bar lists Neighborhoods, Planning (highlighted), Zoning, Development, Work with Us, Housing, and Research & Maps. A left sidebar menu under 'Planning' includes: What is Planning?, Planning Initiatives (highlighted), Community Planning, Institutional Planning, Waterfront Planning, Urban Design, and Urban Renewal. The main content area features a large aerial photograph of the neighborhood with a teal banner reading 'PLAN: Glover's Corner, Dorchester'. Below the photo is a 'Description:' section with text: 'PLAN: Glover's Corner, Dorchester is a comprehensive planning initiative in partnership with the community, staffed by a planning team consisting of an interdepartmental working group from across City departments and State transportation agencies. "Preserve, enhance, and grow" are the three lenses by which the study area will be examined to determine a vision for the future Glover's Corner. Community discussions will focus on guidelines for future development and open space, as well as strategies to enhance existing businesses and residential communities. The primary goals of this process include: A proactive approach to change in an area that will likely face increasing development pressure. Engagement of community residents, businesses, property owners, non-profits, civic groups, advocates, and various stakeholders through a range of workshops, site visits, and...'. To the right of the description are three sections: 'STAY CONNECTED' with a sign-up form for email updates, 'EVENTS' listing a '28 Jun PLAN: Glover's Corner Planning Workshop', and 'NEWS' with a post from January 26, 2017: 'BPDA Launches Question Campaign to Engage Residents in Plan: Dorchester, Glover's Corner'.