

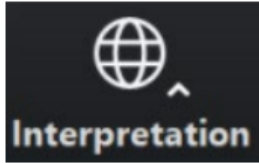


44 Maple Community Meeting – Proposal Presentation



bpda

Interpretation and Translation

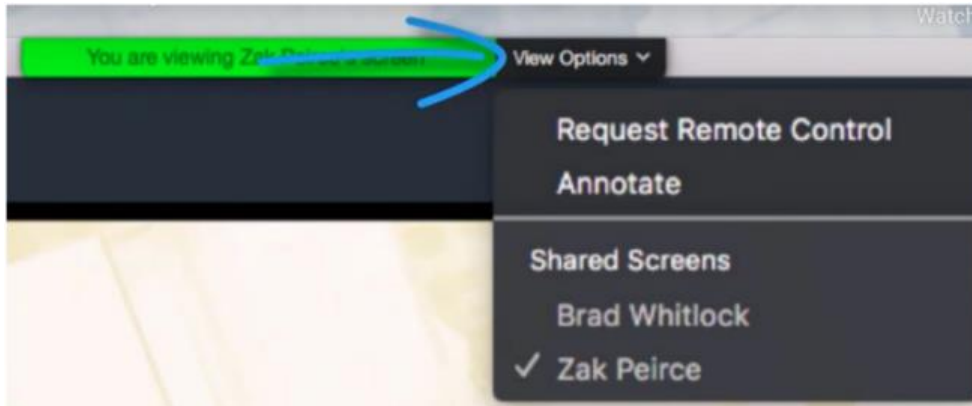


“Spanish” – for Spanish

“Haitian Creole” – for Haitian Creole

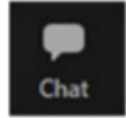
“Cape Verdean Creole” – for Cape Verdean

“English” – for English

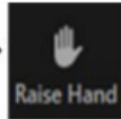


Zoom Tips

- Here are some tips on using Zoom for first-time users. Your Controls are at the bottom of the screen.



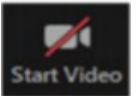
Use the chat to type a comment or ask a question at any time. Members of the BPDA will moderate the chat.



To raise your hand, click on "Participants" at the bottom of your Screen, and then choose the "Raise Hand" option in the participant box, or press *9 on your phone.



Mute/unmute – Participants will be muted during the presentation. The host will unmute you during discussion if you raise your hand and it is your turn to talk. To mute/unmute on your phone press *6



Turns your video on/off

Recording

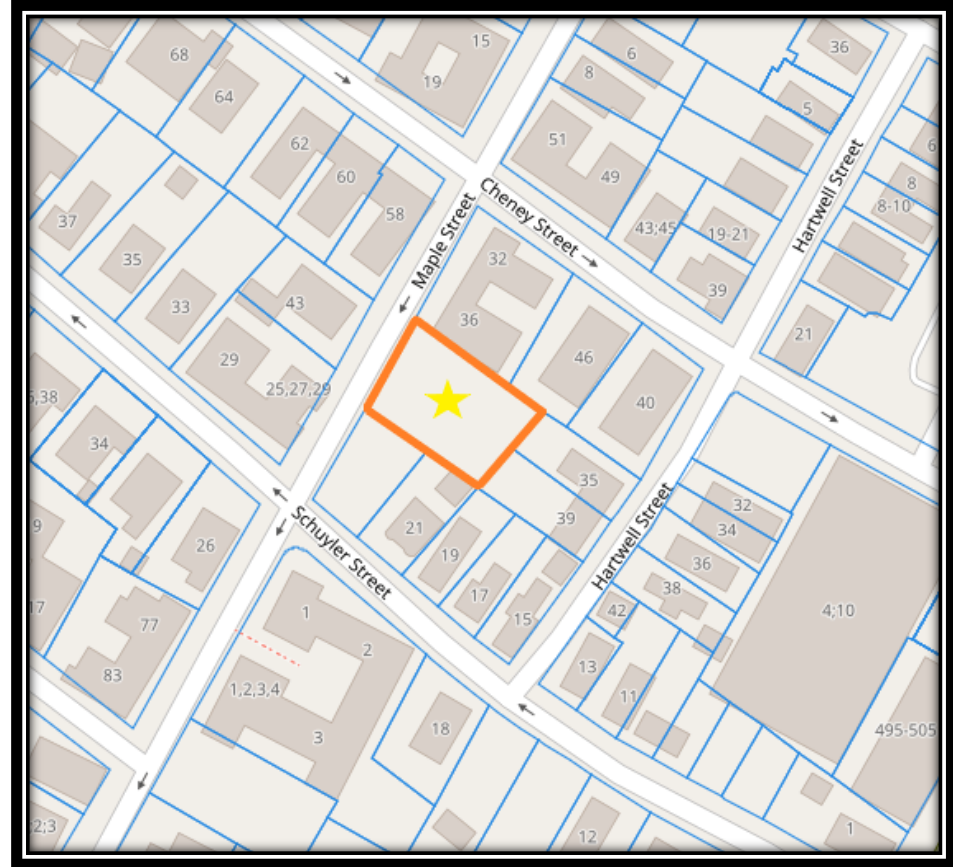
- At the request of community members, this event will be recorded posted to the 44 Maple Community Meeting – webpage at <https://bit.ly/44MPP> for those who are unable to attend the live.
- Also, it is possible that participants may be recording the meeting with their phone cameras or other devices. If you do not wish to be recorded during meeting, please turn off your microphone and camera.
- If your camera and microphone are off, you can still participate through the chat feature.

Zoom Etiquette

- We want to ensure that this conversation is a pleasant experience for all attendees.
 - Please remain muted until called on. If you'd like to speak during this time please use the "Raise Hand" function in Zoom so a BPDA moderator can unmute attendees.
 - Please be respectful of each other's time.
 - We ask that participants limit their questions so that others may participate in the discussion. If you have more questions, please wait until all others attending have an opportunity to ask questions.
 - If we are unable to get to your question at this meeting please put them in the Chat at the end or email jonathan.short@boston.gov

What is Our Focus Today?

- **Developer Presenting their team development proposal for 44 Maple Street**
- This is your chance to ask the developer questions and state your thoughts on the proposal.
- We want to hear your thoughts and ensure that all opinions are heard and play apart in the redevelopment of these sites
- There are NO WRONG IDEAS. Please feel free to speak your mind regarding these parcels.



Agenda

1. **44 Maple Street Proposal Presentation**
2. **Proposal Q&A**
3. **Feedback and Next Steps**

An aerial photograph of a lush, green food forest in an urban courtyard. The courtyard is filled with various plants, trees, and garden beds. A large, octagonal structure with a grey roof is visible in the upper right. The courtyard is surrounded by multi-story apartment buildings. The text "44 Maple Street Food Forest" is overlaid in large white font across the center of the image.

44 Maple Street Food Forest

Neighbors weaving green space equity and climate resilience
across Boston

WHY?



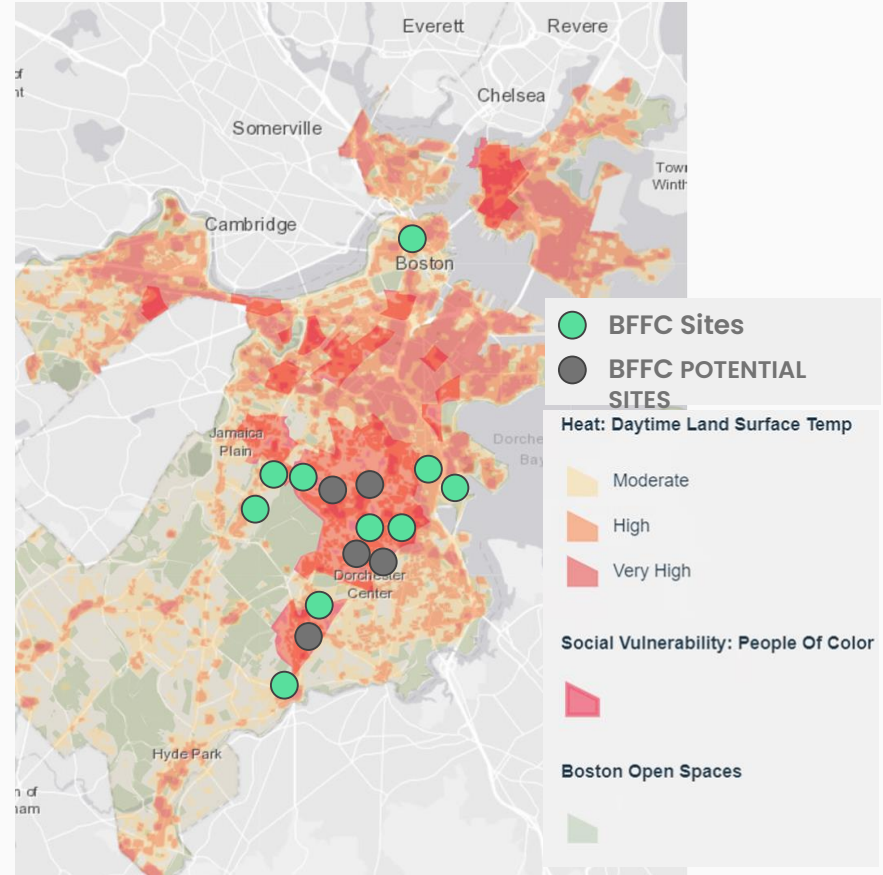
Egleston Community Orchard, Egleston Square



CLIMATE CHANGE INEQUITY

“Boston is experiencing increased temperatures and extreme heat events due to climate change...our most vulnerable residents suffer an unfair heat burden.”

- Preparing for Heat Report, the City of Boston, link [1](#), [2](#)



WHAT?





Edgewater Food Forest Stewards, BFFC Planting Workshop

**Edgewater Food Forest
River St., Mattapan**

March 2021

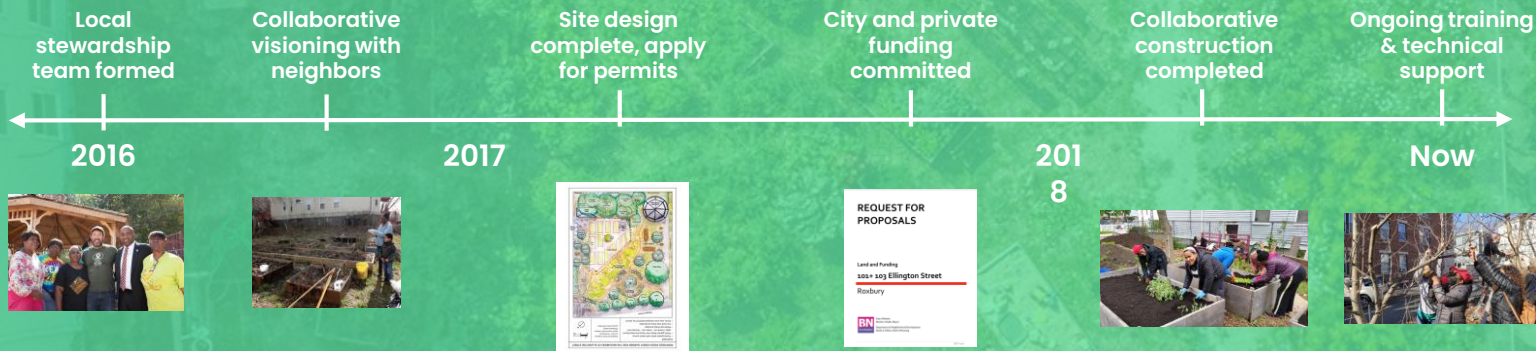


May 2023

[Video Link](#)

An Example: Ellington Community Food Forest

- Two city lots transferred to BFFC's land trust
- Stewardship team led by Black women
- Food forest care training and technical support provided
- Spring 2018 Completed, Now locally owned open public food forest park forever





"This isn't just a garden where people can come to harvest, it's a garden where people can come to bond. There's a lot of community building here. People are making friends. Children play. They learn about strawberries and different herbs. It's really a learning, working garden for the community. It's such a beautiful space. It's so calm and peaceful and so healing. It's our space and we're so proud of it."

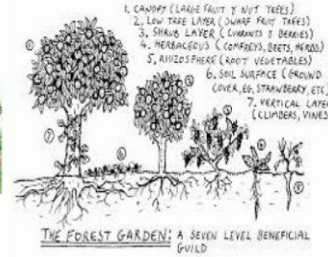
*Carolyn McGee, Lead Steward
and BFFC Board Member*

WHAT IS A FOOD FOREST

COMMUNITY & FOOD

PERMACULTURE PRINCIPLES

Good Design: Stacking Functions



Reclaiming Food Services



Perennial Vegetal



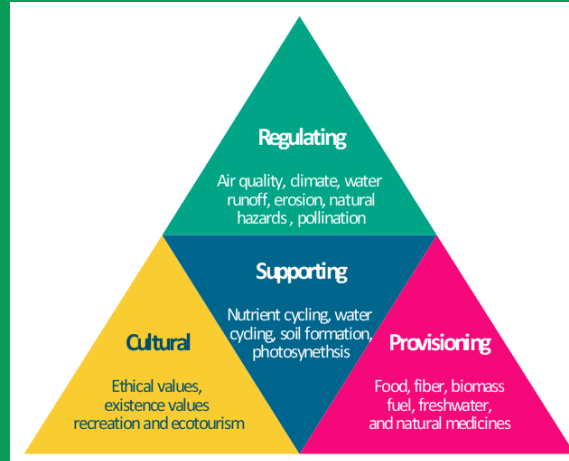
Expanding Our Palettes



Familiar Annuals:



ECOSYSTEM SERVICES – MITIGATING CLIMATE INEQUITY



HOW?



BOSTON FOOD FOREST COALITION 4-PART MODEL



Land trust - In partnership with the City of Boston we transfer city-owned lots back to communities.



Food forest development - Together, We develop open public spaces that produce food and community resilience.



Stewardship teams - We partner with neighborhood groups that design and tend their food forest parks.



Education - We offer permaculture workshops and classes for our stewardship teams and the Boston public.

LAND TRUST

- Land Ownership by the community
- Network of sites
- Board of Directors, with majority land stewards
- Memorandum of understanding
- Continued technical assistant & support
- Transformation of the land



STEWARDSHIP TEAMS

- **Care for the food forest garden:** prune fruit trees, harvest food, plant, weed, etc
- **Build community through the garden:** host spring clean ups, harvest festivals, volunteer days, potlucks, etc
- **Connect with other neighborhood stewards across Boston:** linking you into a network of mutual aid for sharing plants, ideas, and support



What is a Steward?

“Being a steward means I have some type of control over what’s going on in my neighborhood.”

- Brenda Jones, Steward of the Edgewater Food Forest at River Street



BFFC Supports to neighbors

- **BFFC provides technical assistance support to neighbors to maintain their food forest park and engage their neighbors**
- **BFFC also provides workshops/ educational opportunities such as:**
 - **FRUIT TREE PRUNING**
 - **COMMUNITY ENGAGEMENT & RESILIENCE**
 - **HARVESTING FOOD**
 - **FORAGING**
 - **COOKING**
 - **MAINTENANCE**





Workshops & Technical Assistance from BFFC

FOOD FOREST DEVELOPMENT

- Engage neighbors in conversation of what amenities and use they want on their site
- Hold 2-4 design meetings; iterative design process incorporating neighborhood feedback
- Develop budget, and financial support
- Get bids from contractors
- Manage the construction process
- Celebrate new food forest park!
- Set path for continuous maintenance and education



44 Maple St.



44 Maple Street Food Forest

Leading the development of this vision are:

- **Sonoma Maple Schuyler Tenants Association (SMSTA)**
- **SMSTA Community Gardeners**
- **Project Right**
- **Boston Food Forest Coalition**

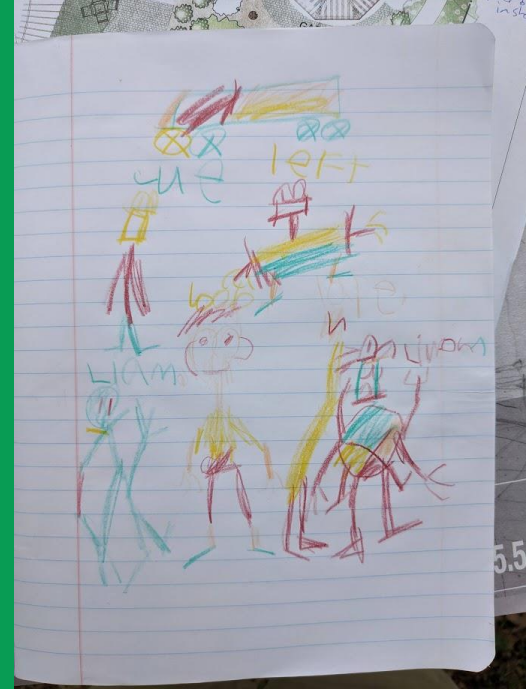
44 Maple – Timeline of community engagement & design

- **2021**
 - Sonoma Maple Schuyler Tenants Association (SMSTA) reached out to BFFC to discuss the potential for a food forest park
 - SMSTA, BFFC, and local gardeners had multiple initial conversations
- **2022**
 - BFFC created initial park design based on neighbors' ideas
 - Began discussing the potential for a food forest at Project Right monthly meetings to get additional neighbors' input
- **2023**
 - Door knocking
 - 2 in-person, 1 virtual community meetings to discuss updated designs

44 Maple Street

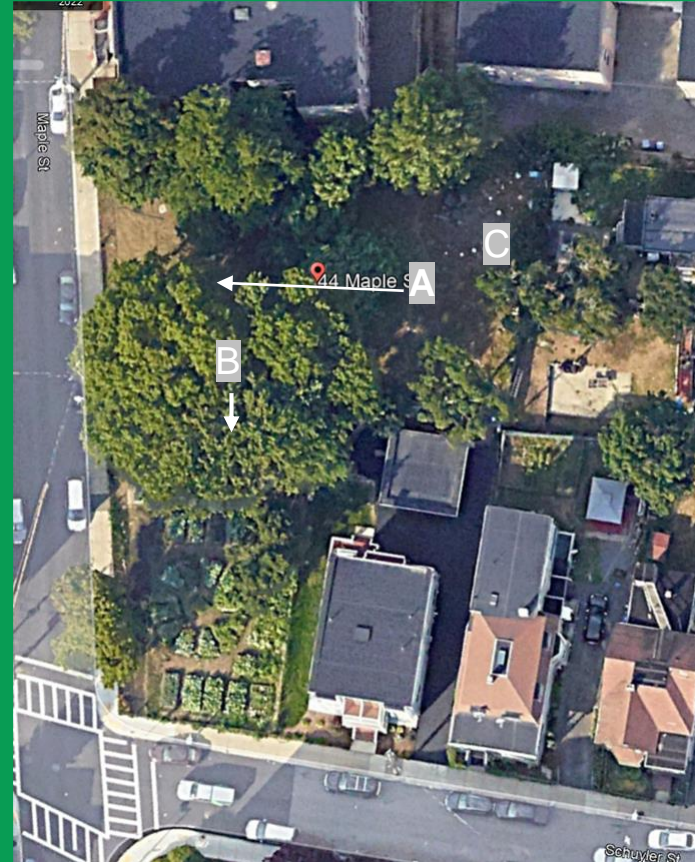


June 2023 Community
Design Meeting



Design feedback from youngest neighbor
(This is a lion shaped recycling bin.)

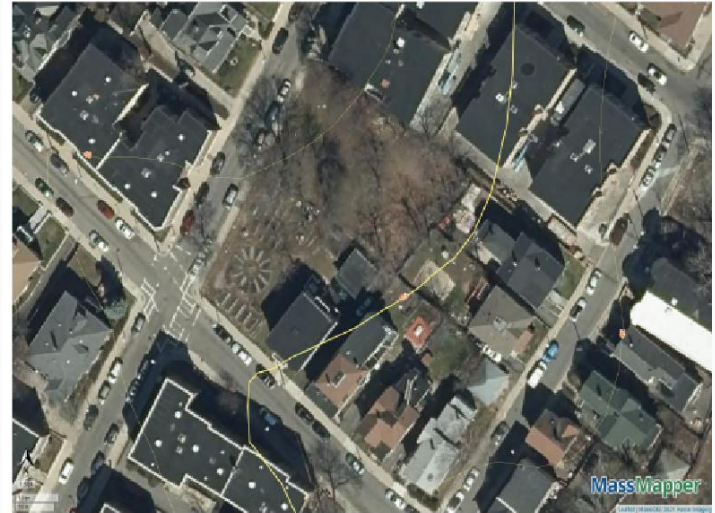
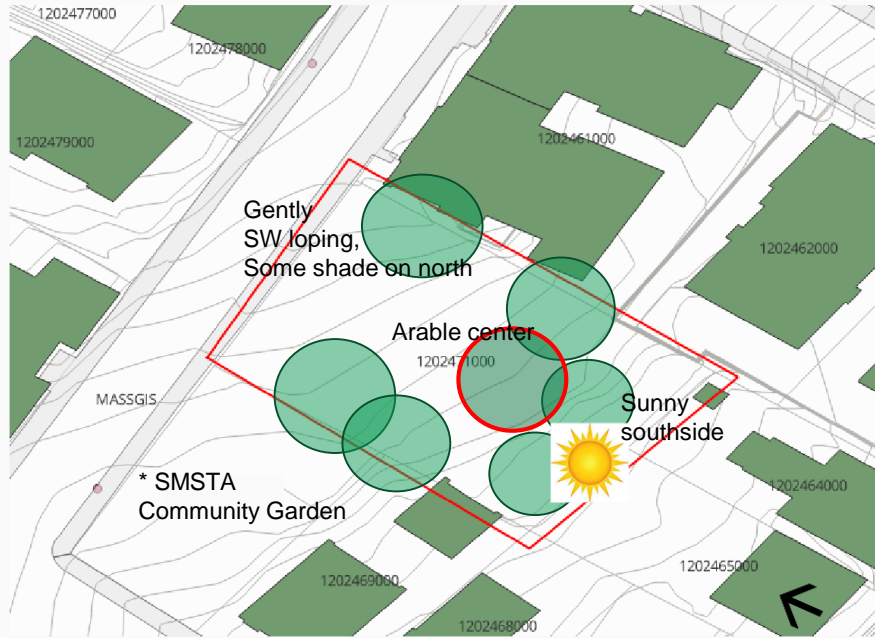
44 Maple Street



A - view from rear of property to Maple Street
B- view from east side fence towards community garden
C- view of back corner



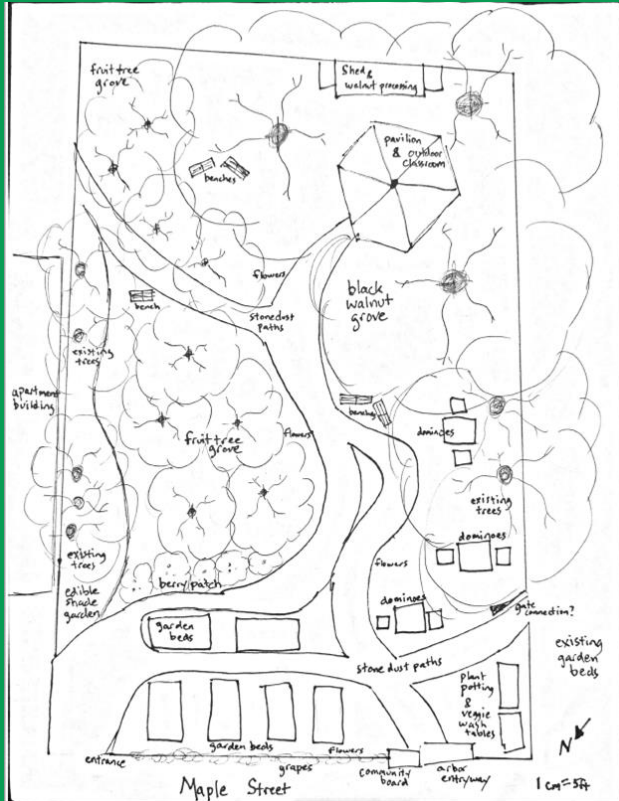
Site Analysis



Environmental Report / Site Reconnaissance Performed by Atlas for MOH, July 2022

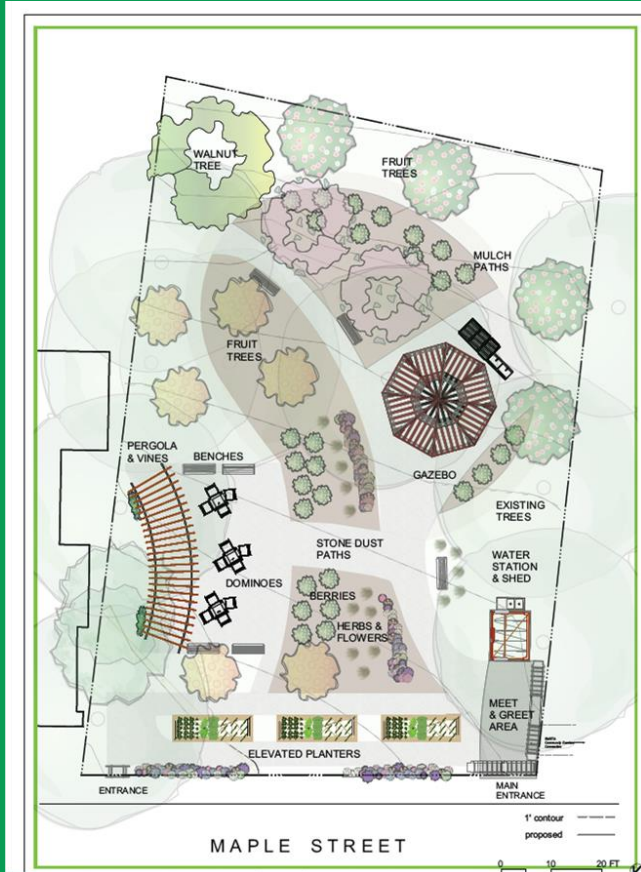
Findings: “no evidence of a recognized environmental condition (REC), controlled recognized environmental condition (CREC), historical recognized environmental condition (HREC) or other notable findings in connection with the Subject Property.” Further soil testing will be done to determine soil amendments needed for plant growth.

44 Maple Street



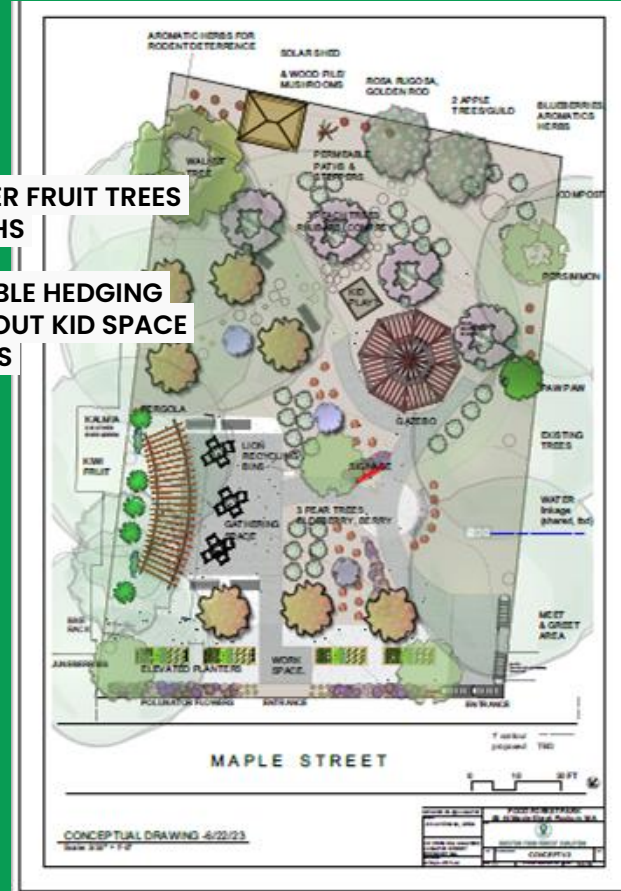
Dec 2022 - FEB 2023 INITIAL SKETCH, DIGITAL VERSION OF SKETCH

44 Maple Street – DESIGN ITERATIONS SPRING 2023



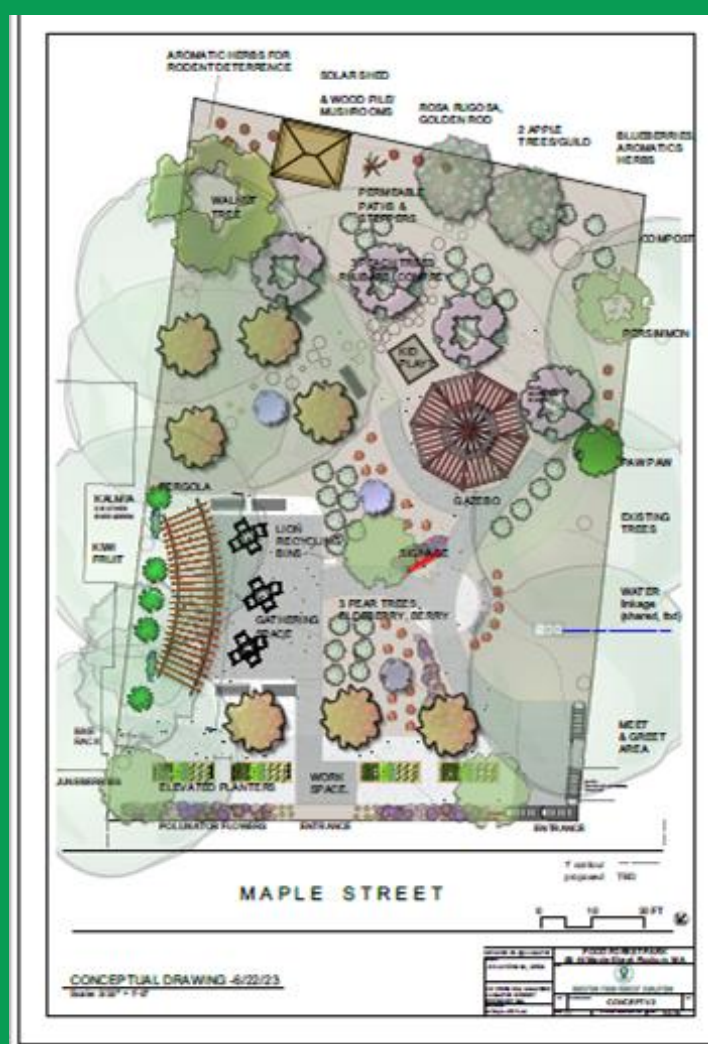
NEIGHBORS WANTED:

- APPLES, PEARS, OTHER FRUIT TREES
- MORE DURABLE PATHS
- RODENT CONTROLS
- LOW NUMBER OF EDIBLE HEDGING
- STILL UNCERTAIN ABOUT KID SPACE
- MORE VEGE PLANTERS
- RECYCLING BIN



Park Design Highlights

- Fruit trees - apples, pears, peaches, paw paw
- Accessible paths, benches, lighting
- Pergola, shed, wash station
- Additional raised planters
- New fencing and entrances connecting to community garden and sidewalk
- Game tables
- Gazebo
- Solar power
- Irrigation
- Community Message Board
- Sustainable, Permaculture design for lower maintenance
- Annual support from the network of food forest sites





THANK YOU!

Please feel free to contact us:

Orion@bostonfoodforest.org



Comments and Q&A

- Please click the raise your hand option to be called on OR place your question in the comment section.
- **What are your thoughts, wants, and/or needs regarding the Request for Proposal?**
- You will be asked to take a poll at the end of questioning.

3

Feedback & Next Steps



Next Steps

- Community Comment Period is Open for 14 Days – Closes on July 31
 - Email comments to Jonathan.Short@boston.gov
- Project Review Committee Decision will be made on August 2nd
- If Approved, BPDA Board Memo for Tentative Designation on August 17th



**boston planning &
development agency**

FIN

Email jonathan.short@boston.gov

Comment period closes on July 31