

Chelsea St.

Rope Walk

Building 107

Building 108

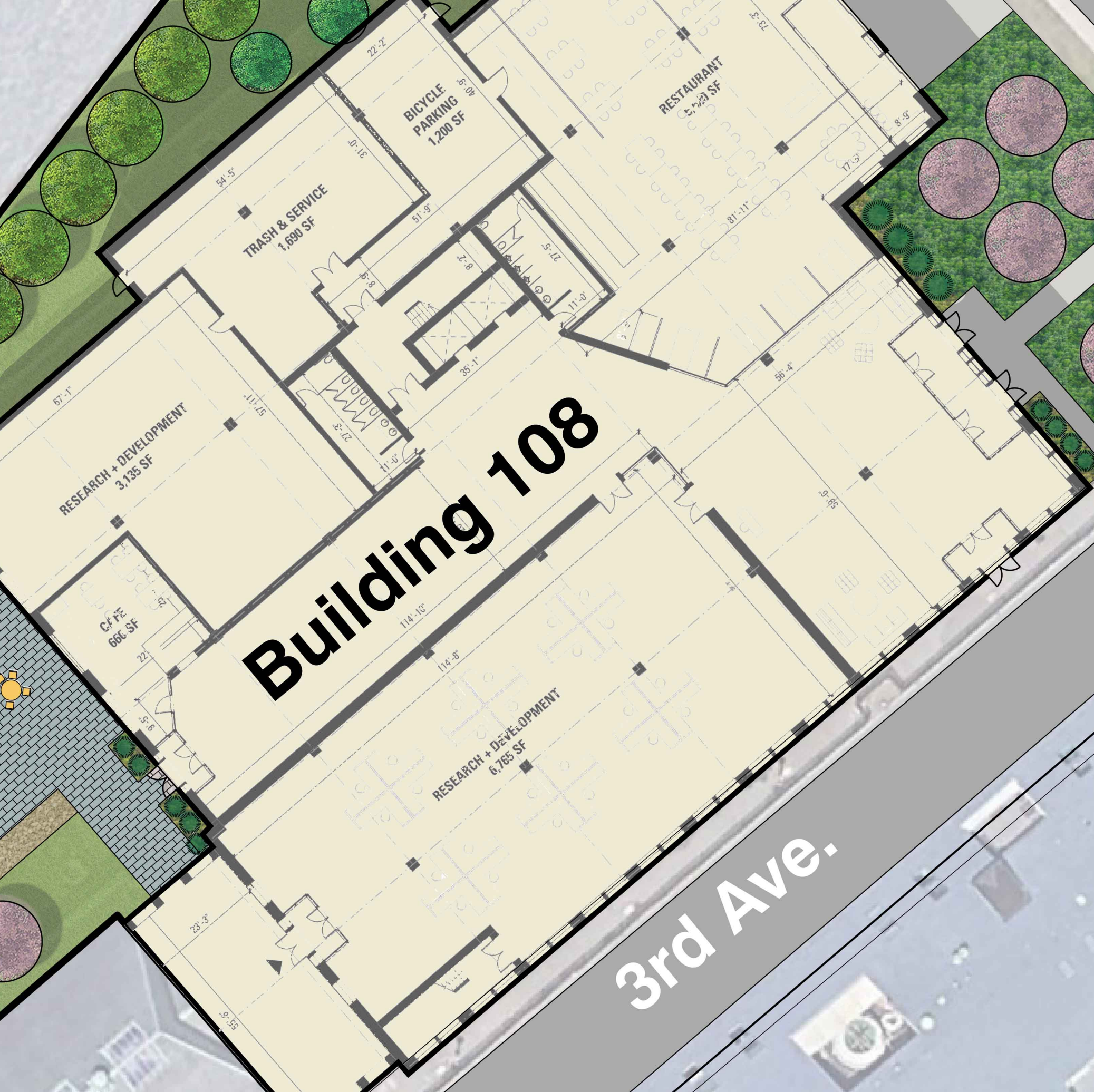
3rd Ave.

4th Ave.

9th St.

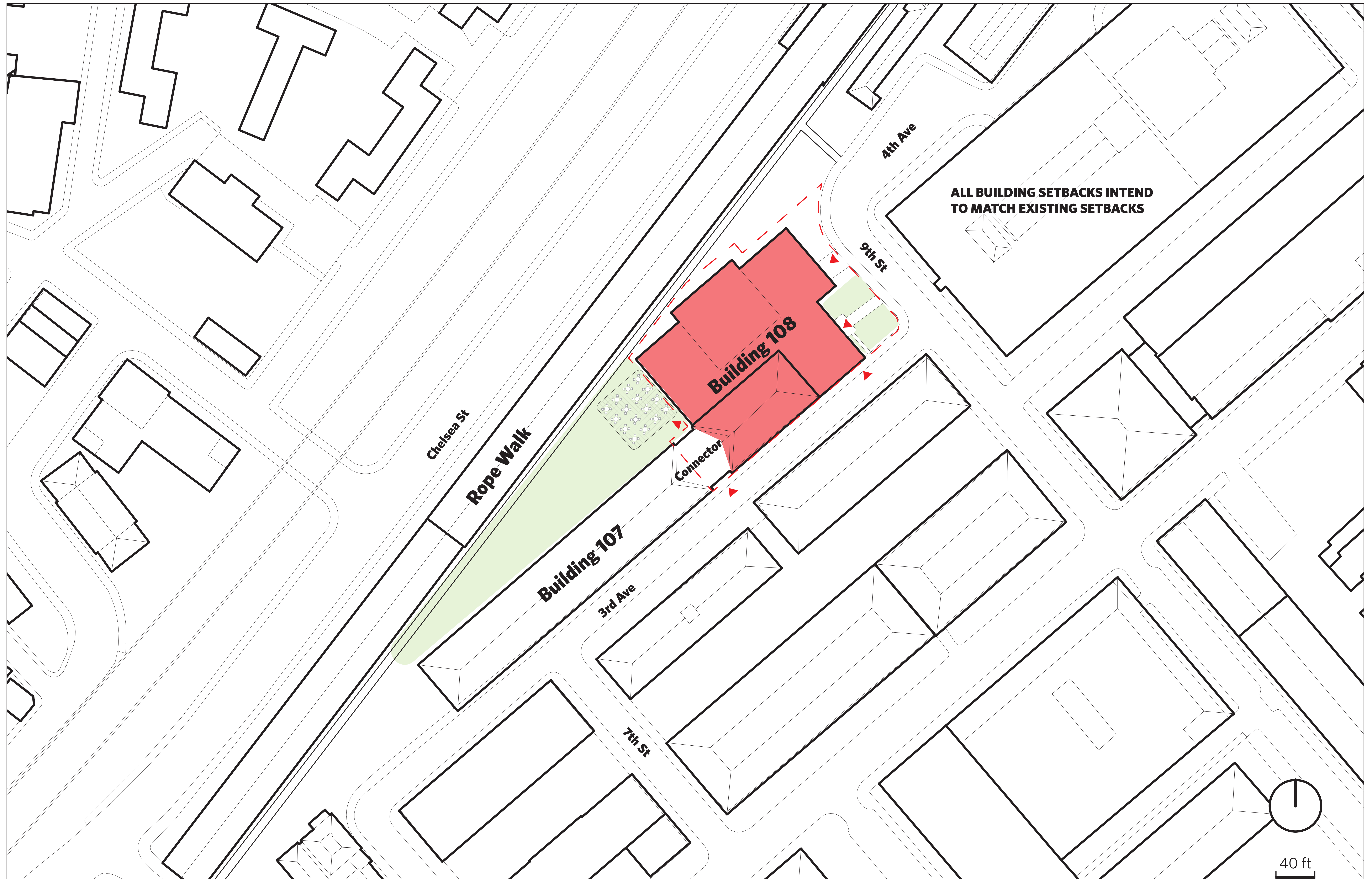
1st Ave.

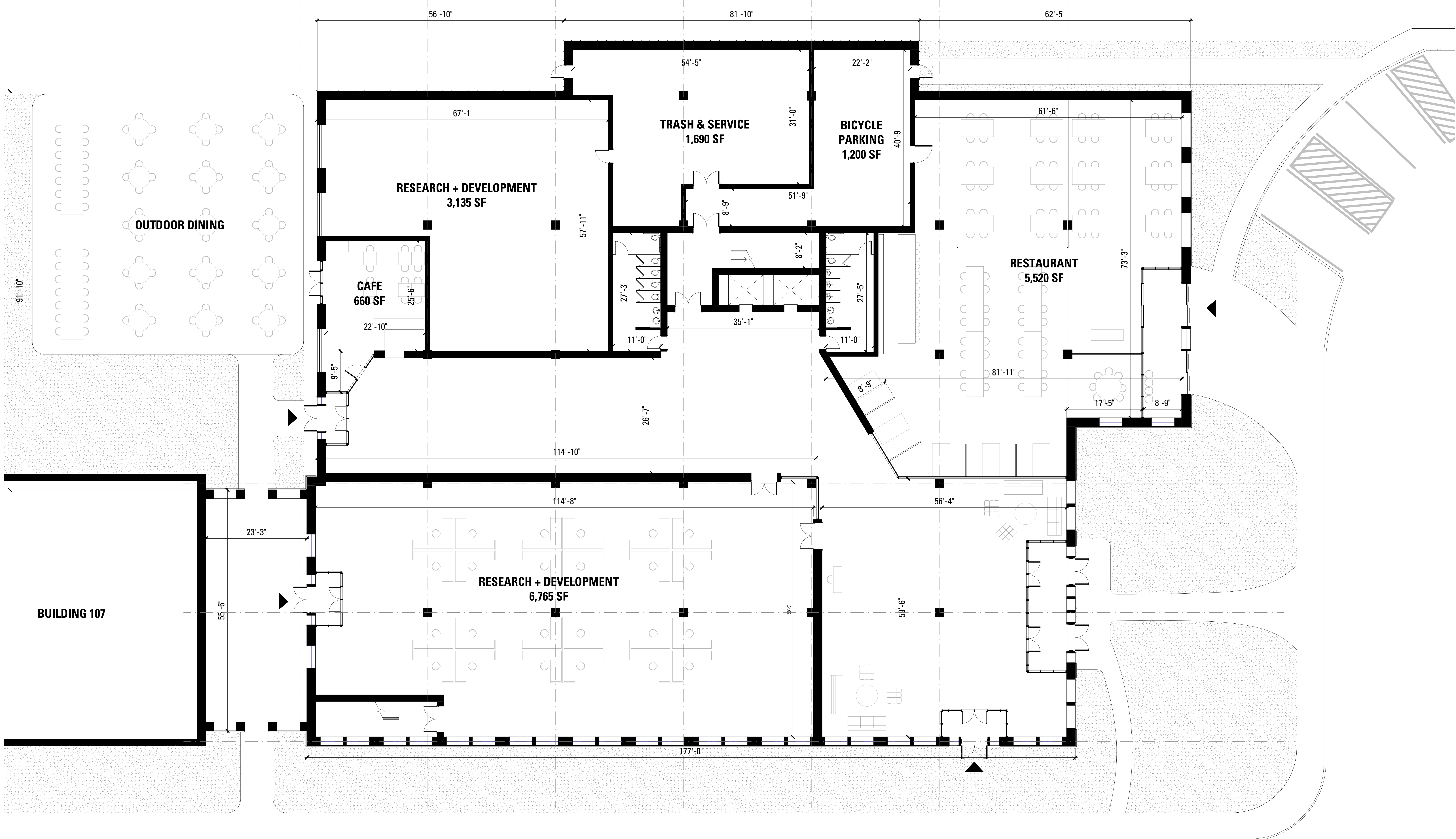
SCALE: 1" = 20'
0 20 40 80 120



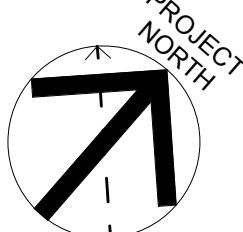


80 ft





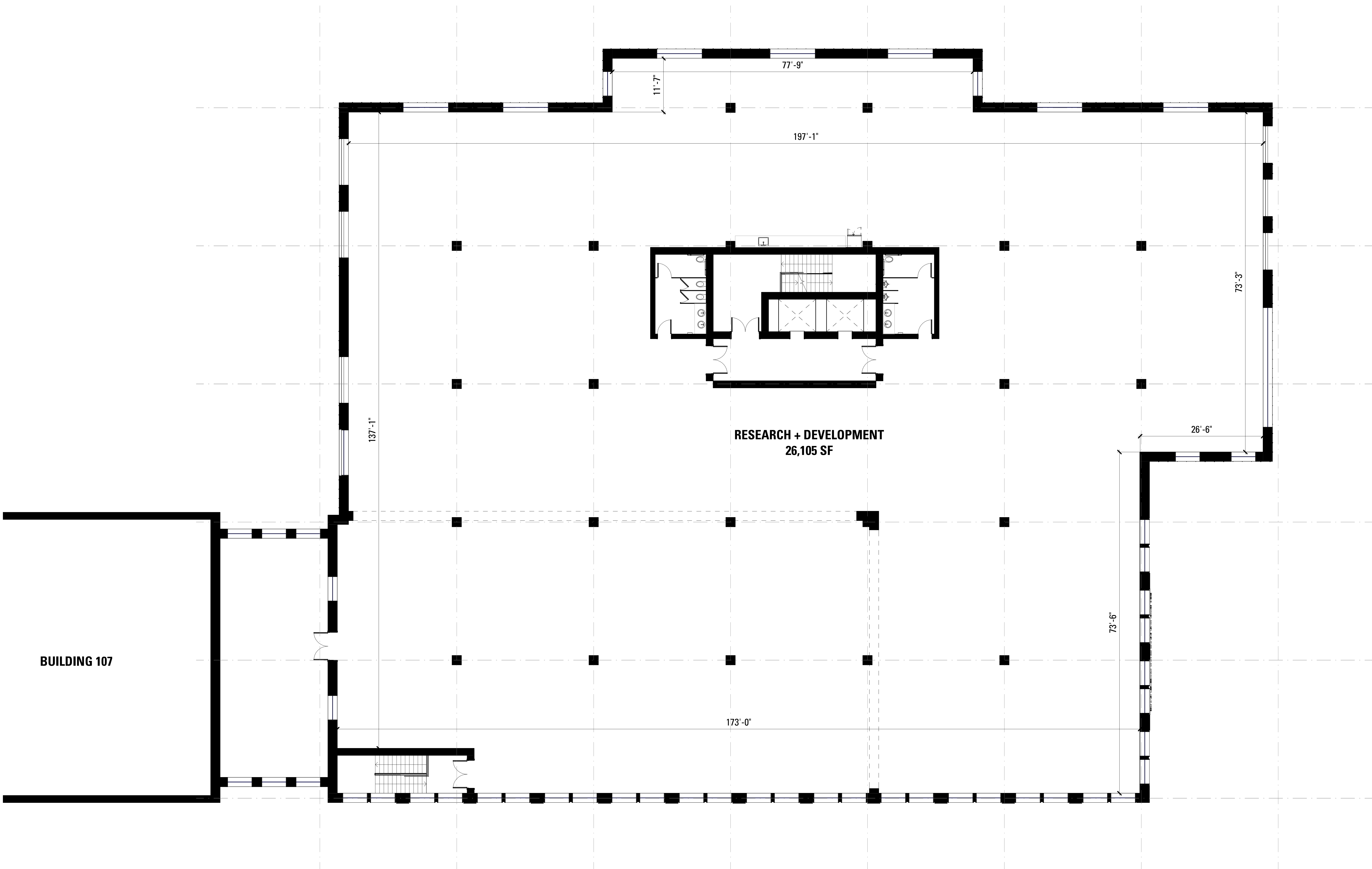
BUILDING 107



1/8" = 1'-0"

GROSS SQUARE FOOTAGE: 28,015 SF

GROUND FLOOR PLAN



RESEARCH + DEVELOPMENT
26,105 SF

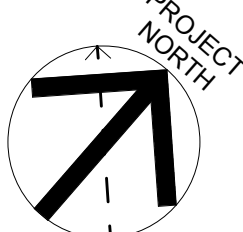
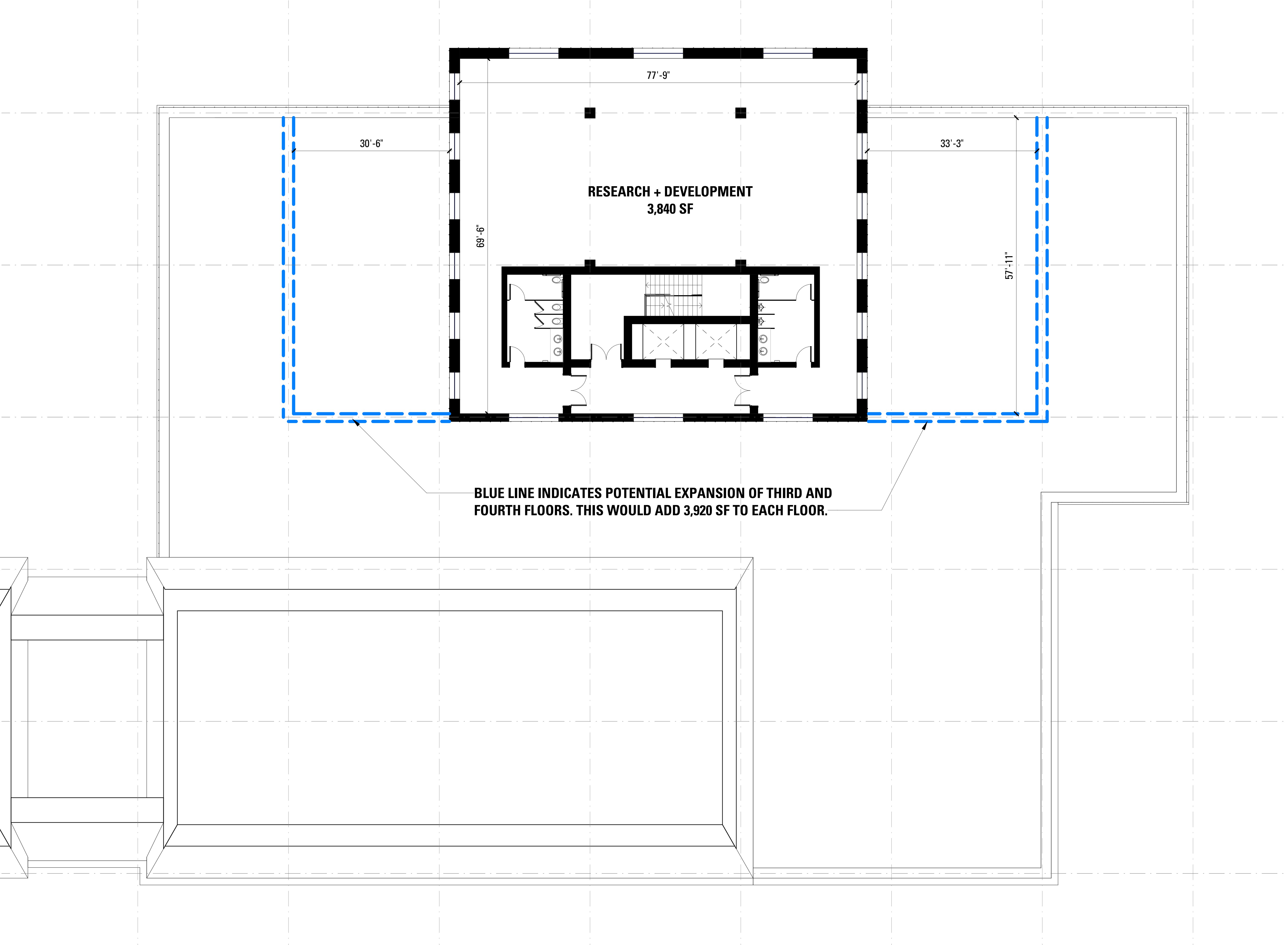
BUILDING 107



1/8" = 1'-0"

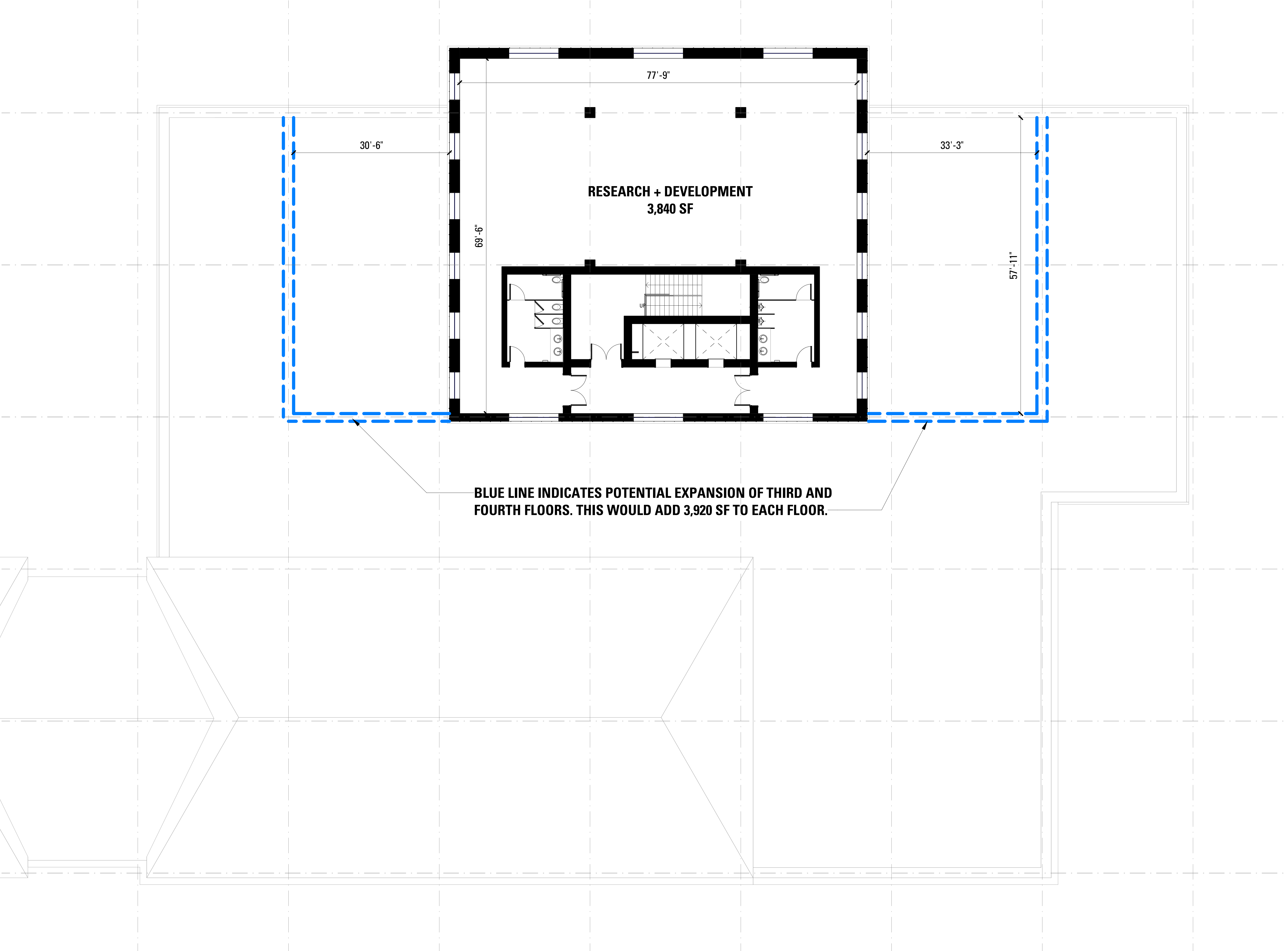
GROSS SQUARE FOOTAGE: 28,015 SF

SECOND FLOOR PLAN

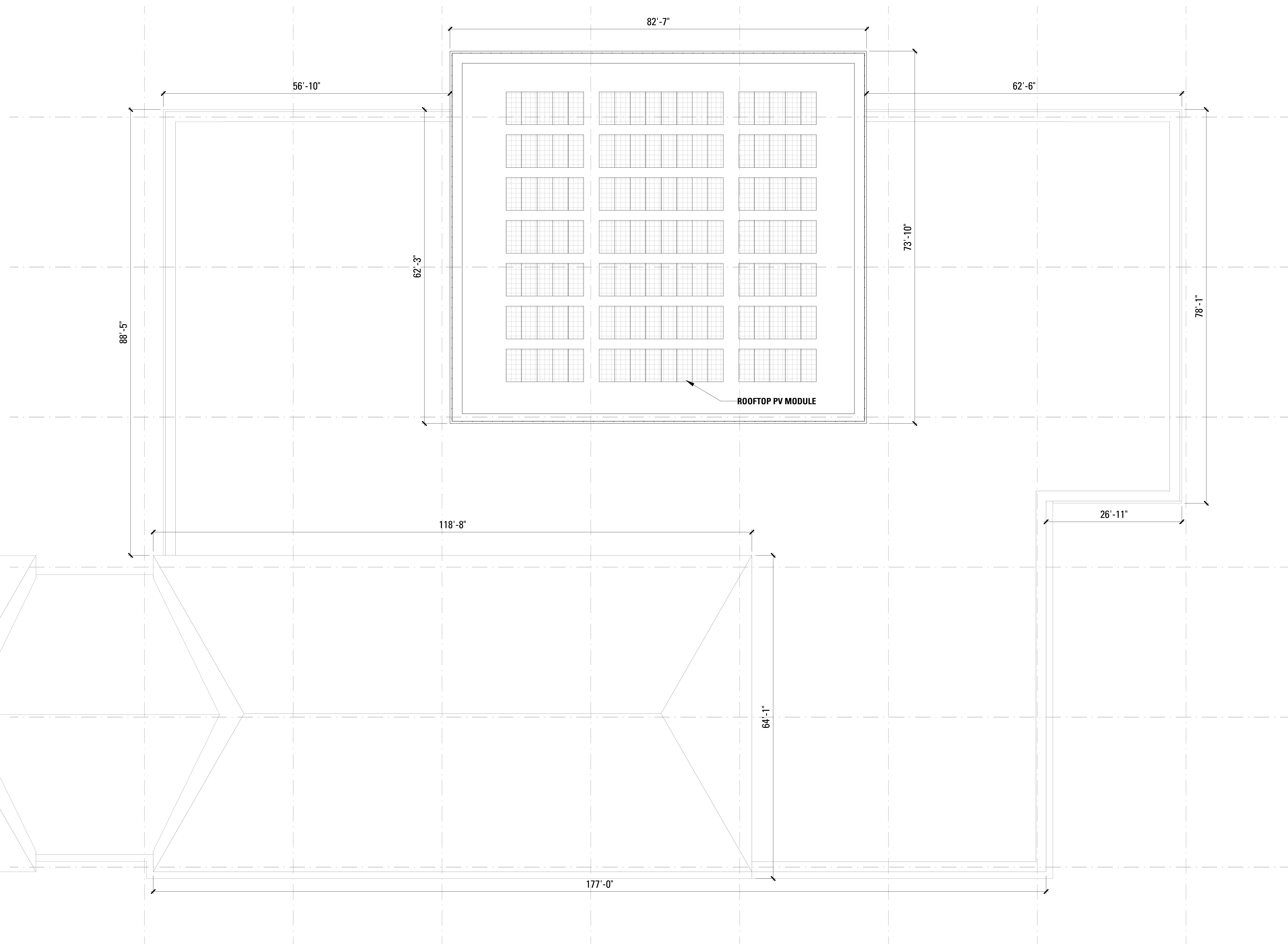


1/8" = 1'-0"

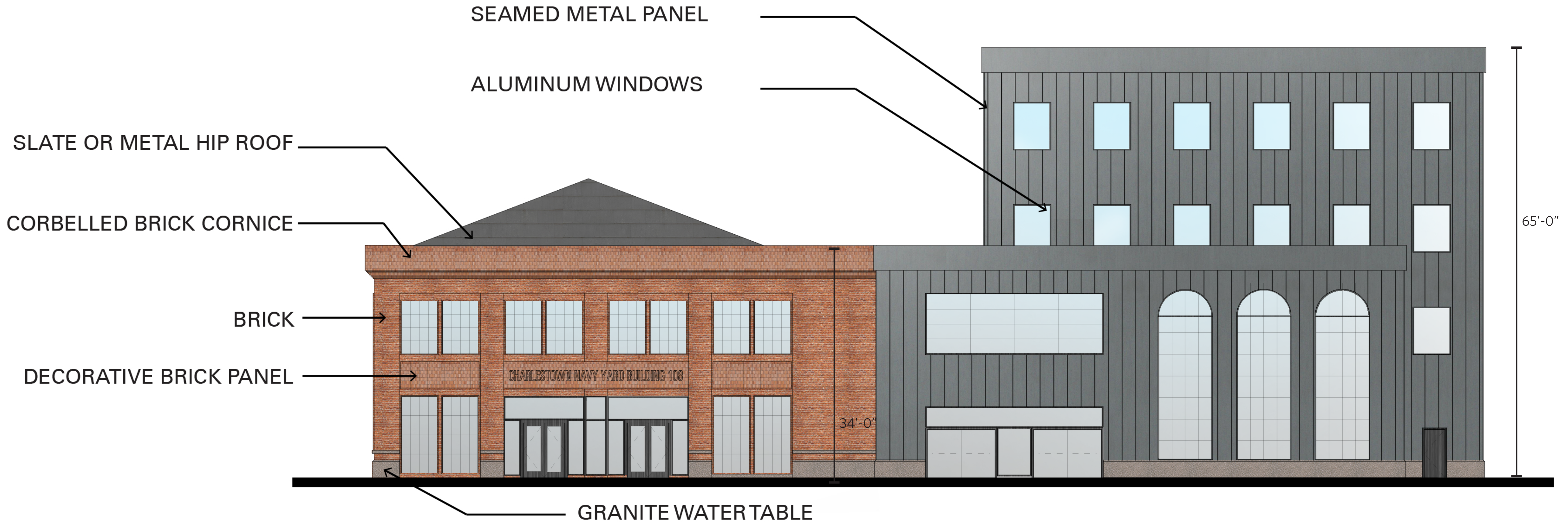
GROSS SQUARE FOOTAGE: 5,405 SF



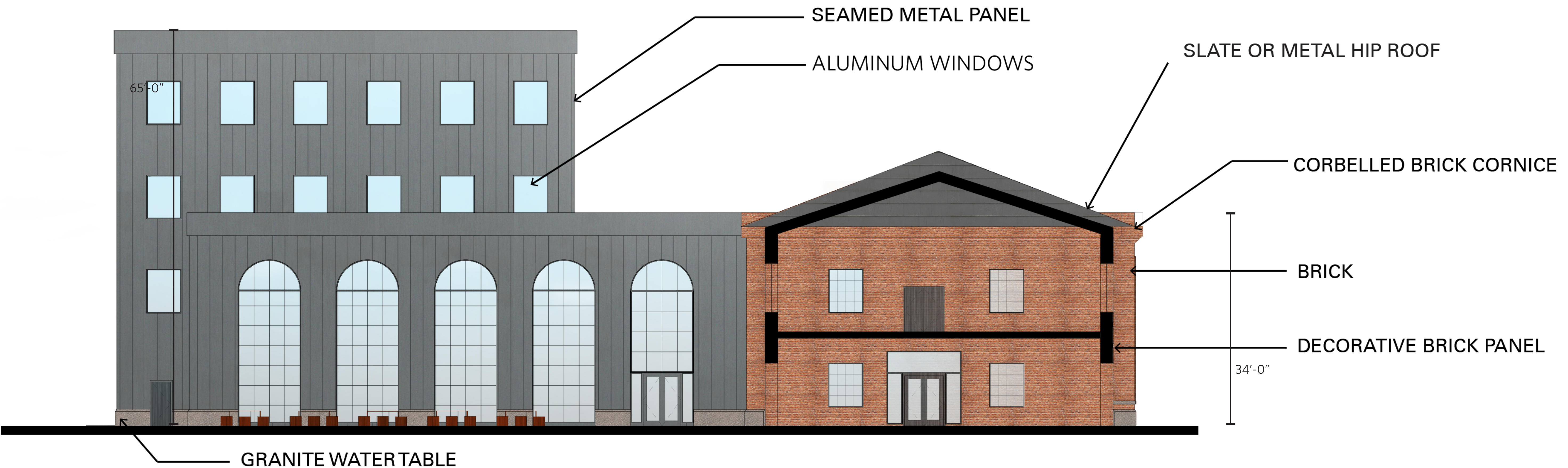
BLUE LINE INDICATES POTENTIAL EXPANSION OF THIRD AND FOURTH FLOORS. THIS WOULD ADD 3,920 SF TO EACH FLOOR.



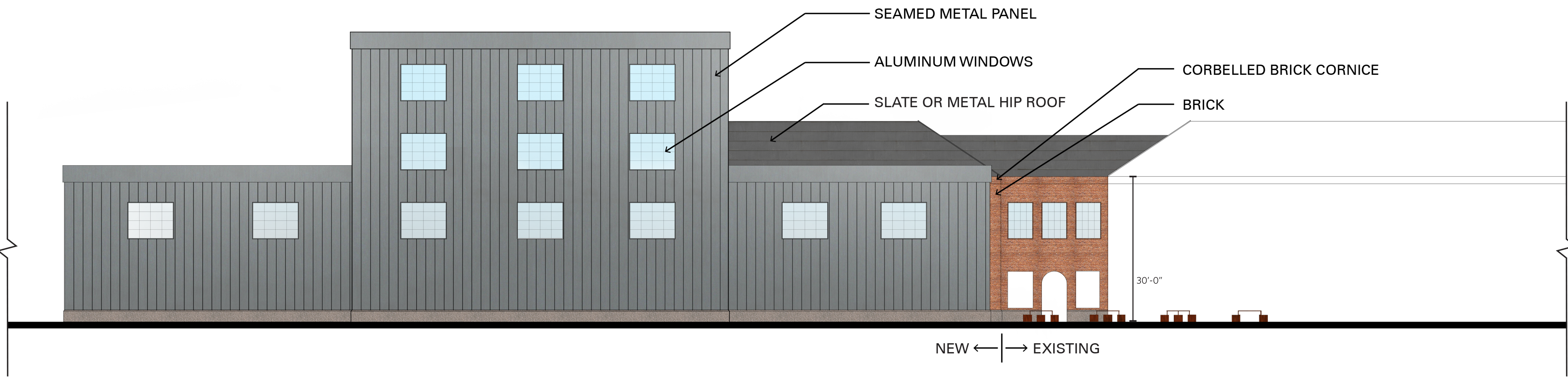




NORTHEAST ELEVATION 1/8" = 1'-0"



SOUTHWEST ELEVATION 1/8" = 1'-0"



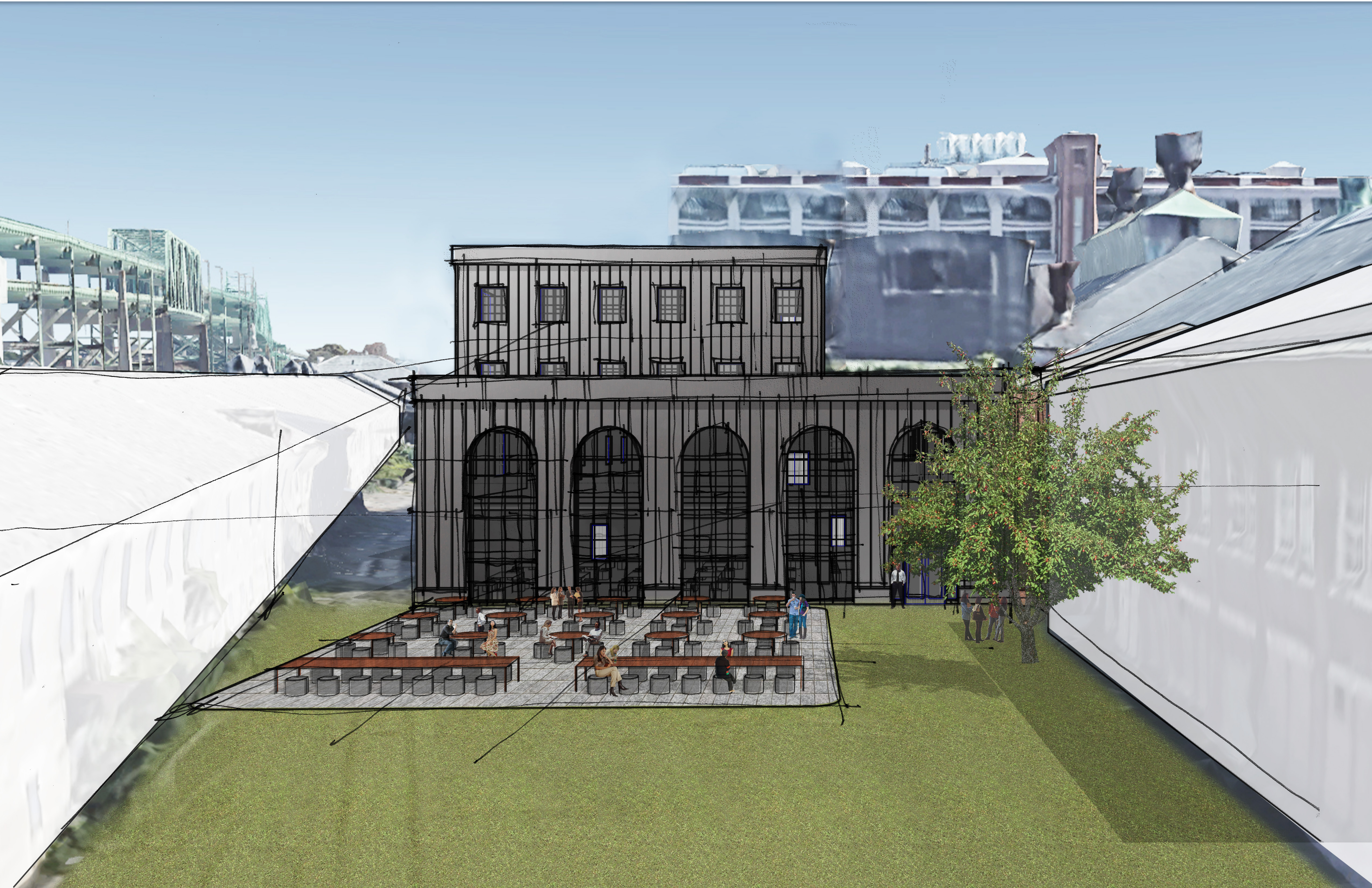
NORTHWEST ELEVATION 1/8" = 1'-0"



PERSPECTIVE ON 9TH ST

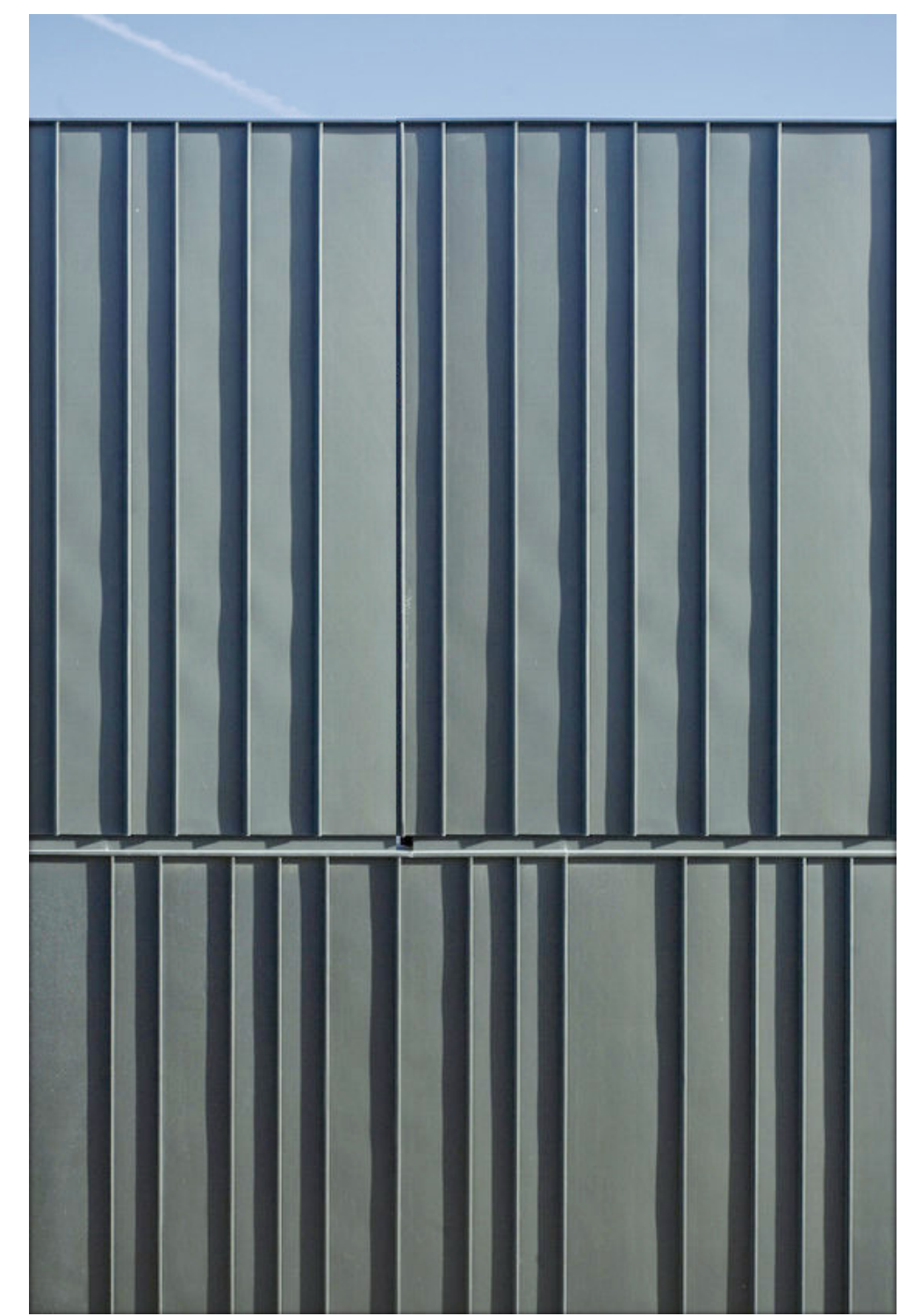


PERSPECTIVE ON 3RD AVE

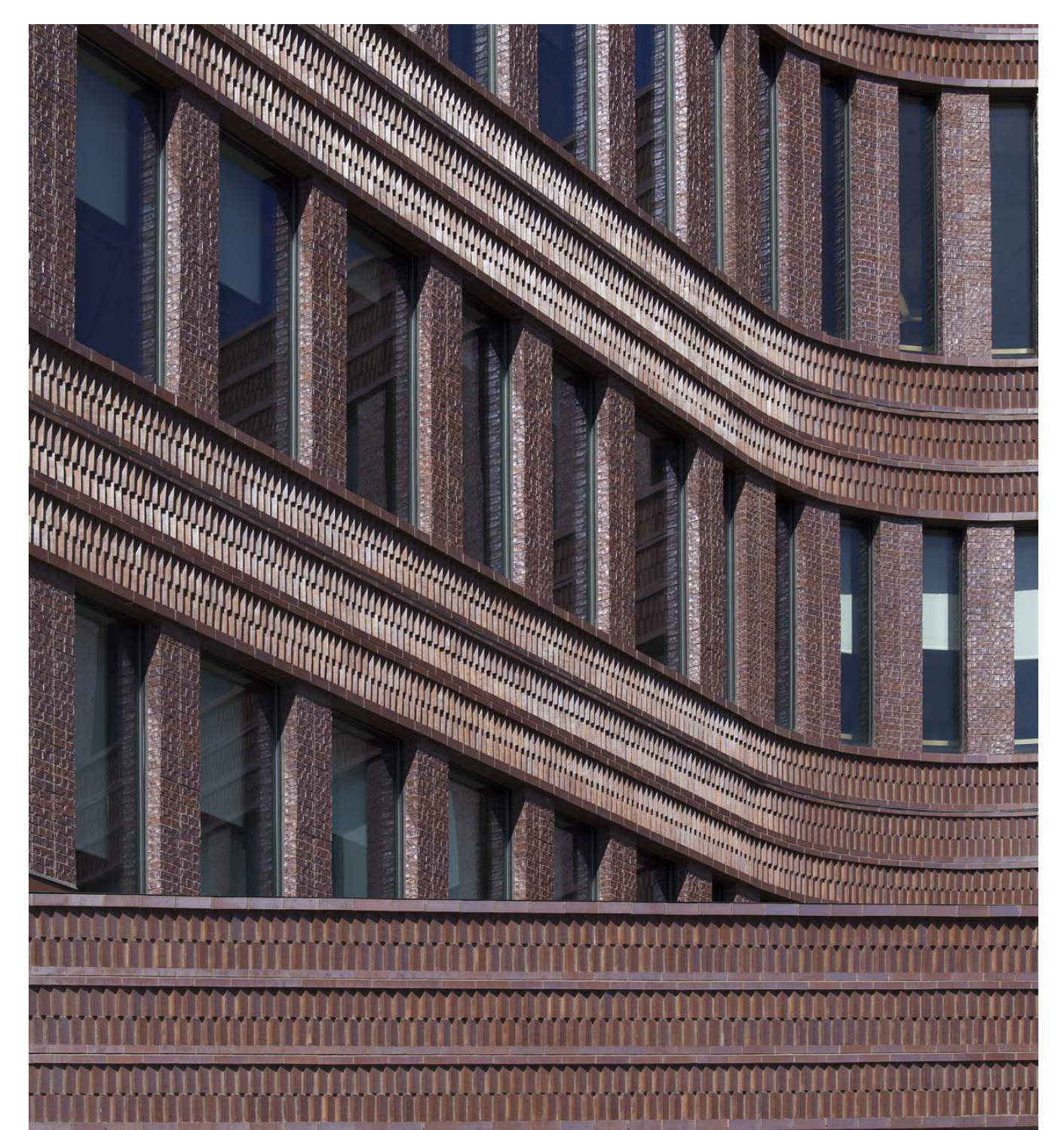
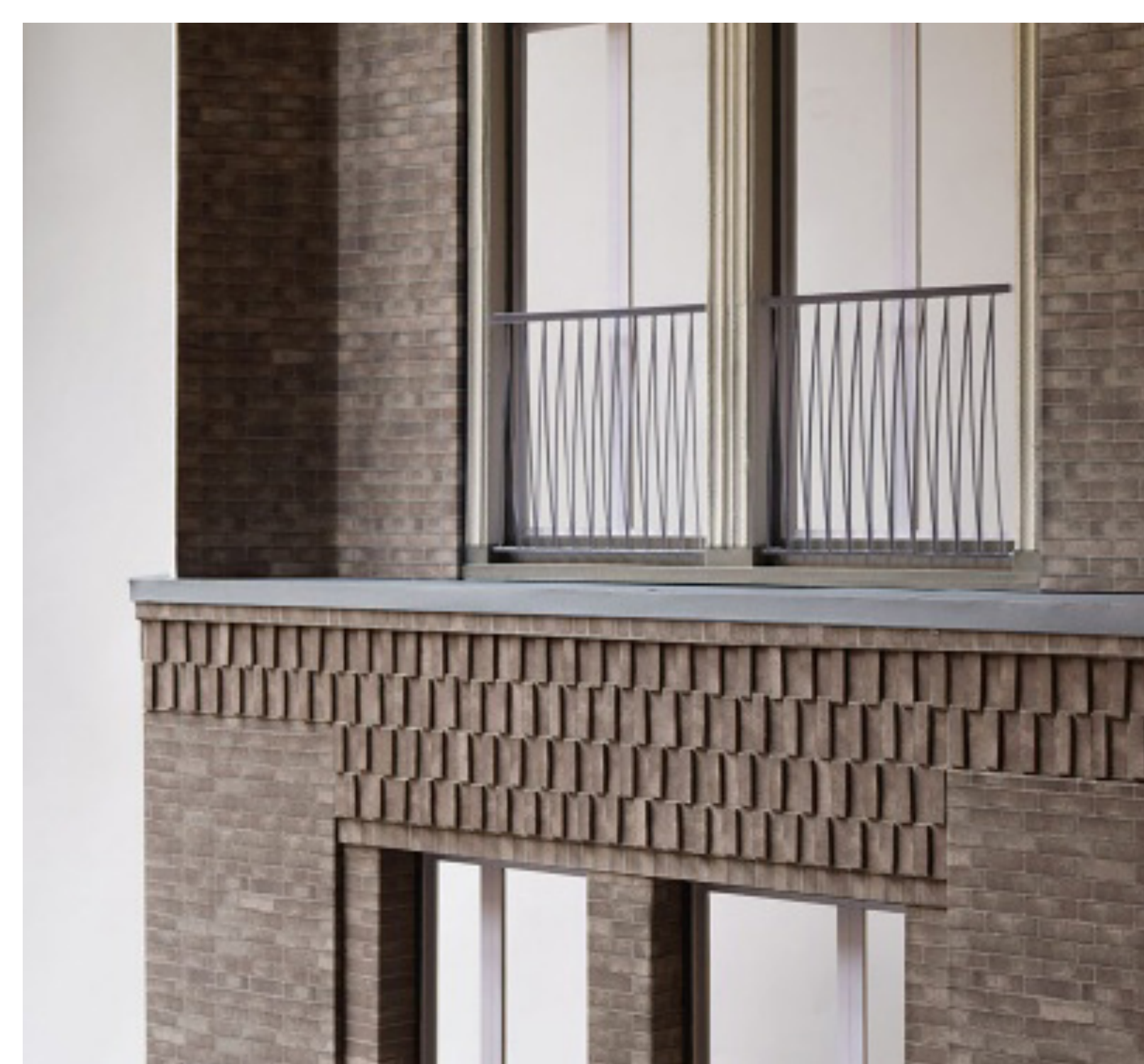


PERSPECTIVE OF BACKYARD

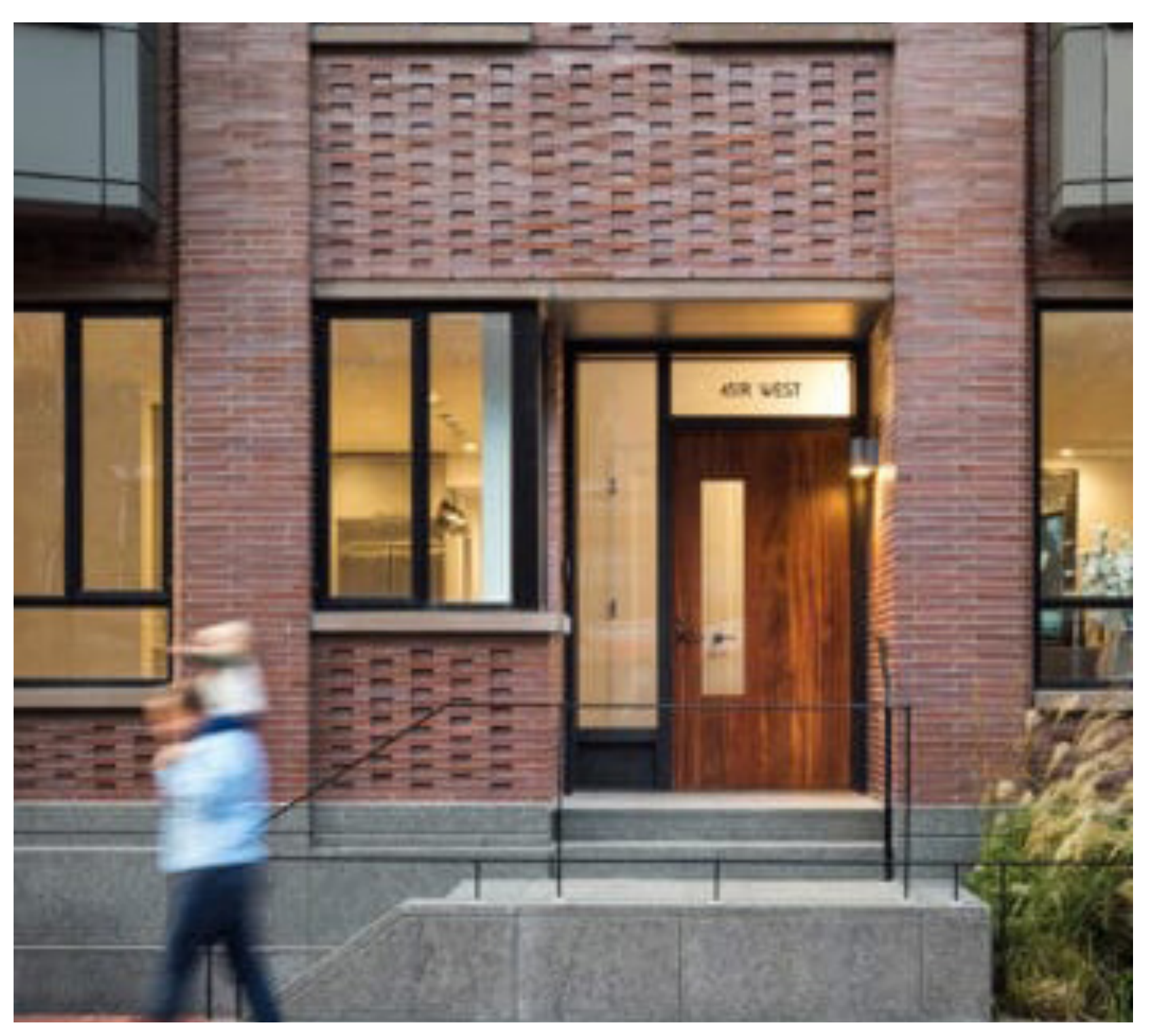
Seamed Metal Facade



Brick Cornice and Detailing



Decorative Brick Panels



Aluminum Windows

