



Aprizentason di Prujétus Prupostu pa 16-20 Townsend Street, 48 Townsend Street, y Holworthy S-20 & S-21

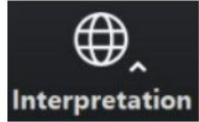
23 di abril di 2024



**boston planning &
development agency**

Interpretason y Traduson

Interpretason

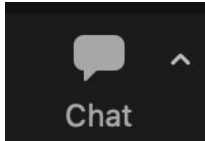


"Spanish" – pa Spanhol

"Haitian Creole" – pa Kriolu di Aiti

"Cape Verdean Creole" – pa Kriolu di Kabu Verdi

Traduson

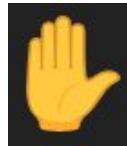


Informason + Dikas pa Riunion na Zoom

- **BPDA sa ta ben grava es riunion** y publika-l na pájina na internéti di prujétu di BPDA. Si bu ka kre pa gravá-bu durante riunion, disliga bu mikrofóni y kámara.
- **Kontrolus di Zoom sta na párti di baxu di bu ekran.** Klika na kes sínbulu li pa ativa diferentis funson.
- **Utiliza funson di labanta mon** (marka 9 dipos 6 si bu sa ta partisipa pa telefóni) y **spéra pa bu txomadu** antis di bu faze pergunta ô kumentáriu.



Dizativa/ativa son



Labanta mon pa entra
na fila pa faze
pergunta ô
kumentáriu



Liga/disliga vídiu



**boston planning &
development agency**

Ajenda

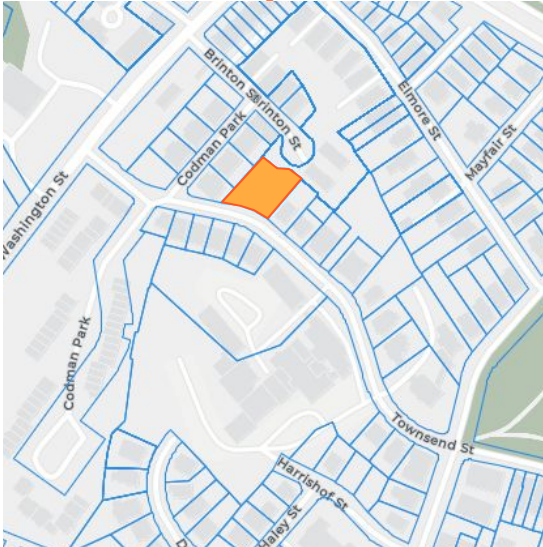
1. **Rivizon di Lokal**
2. **Aprizentason di Prujétus Prupostu (The Garrison Trotter Neighborhood Association)**
3. **Konvérsa ku Kumunidadi**



Lóti

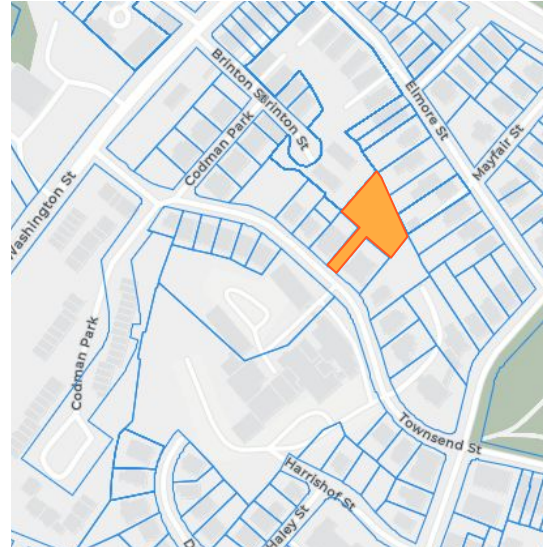
16-20 Townsend Street

Tamanhu di Lóti: 11.935 Pê Kuadradu
Utilizason Atual: Lóti Dizokupadu



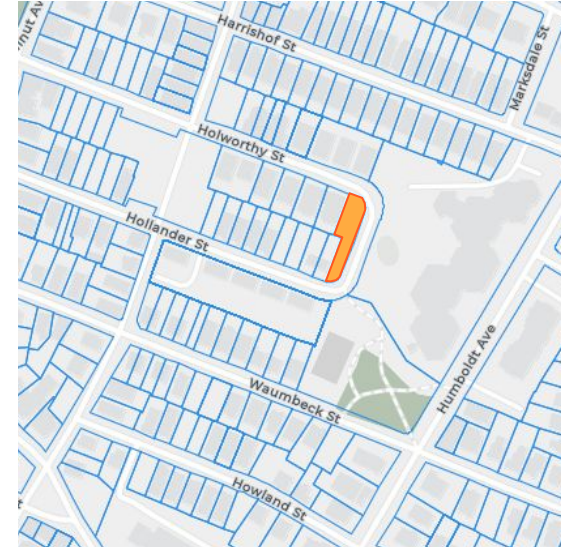
48 Townsend Street

Tamanhu di Lóti: 17.199 Pê Kuadradu
Utilizason Atual: Lóti Dizokupadu



Holworthy S-20 & S-21

Tamanhu di Lóti: 6.000 Pê Kuadradu
Utilizason Atual: Lóti Dizokupadu





Garrison Trotter
Neighborhood Association

BPDA- GTNA

Riunion di Kumunidadei

Lótis di 20 Townsend Street, 48 Townsend Street, y Holworthy
S-20 & S-21

<https://www.garrisontrotter.org/>



Revolution is based on land. Land is the basis of all independence. Land is the basis of freedom, justice, and equality.

— *Malcolm X* —

Kenha k'é nos komu un organizason?

Mison di Asosiason di Zóna di Garrison-Trotter é prumove enpuderamentu di kumunidadi y midjora kualidadi di vida di moradoris di Roxbury, MA ki ta mora na ária di influénsia di GTNA. Nos sforsus ta inklui, entri otus, diféza di kumunidadi, enbelezamentu y jeston di terenus.

Prizervason di Stória y Futuru di GTNA

- Utilizason di spasus abértu pa ilustra, prizerva y mimorializa stória di Prétus na Roxbury. Nu ta ben utiliza spasus pa konta stórias di nos ménbrus-fundador y di otus pesoa inpurtanti di Roxbury.
- Atravê di bankus, plakas y pavimentus, entri otus ilimentu di lokal, nu ta ben kapta stória di zóna, y tanbe insentiva vizitantis a splora kel stória más profundamenti
- Ligason di prujétu *Artery*, ki ta ben pasa pa nos ária di influénsia. Es prujétu ta ben pirmiti pa nu dimonstra rilason entri spasu abértu y arti, pa kria distinus kumunitáriu.

Fundu di Terenus di GTNA

GTNA Land trust (Fundu di Terenu di GTNA) é un operason rinovadu ku ménbrus atual di konselhu di GTNA, ki foi inisiadu pa satisfaze un nisisidadi identifikadu na kumunidadi, di prizerva spasus pa zóna di Roxbury. GTNA é un di kes organizason sén fins lukrativu, ki dónus é prétus, más antigu di Boston, y el ten stadu ta involve sívikamenti na tudu aspétu di kumunidadi, désdi se kriason, 46 anu atrás. Inisialmenti, es Fundu di Terenu ta izistiba ku administrason di Crawford Park Amphitheater, y gósi el sa ta ser re-vitalizadu ku kes prujétu ki sa ta aprizentadu oji. Aléndisu, priméru kinta di GTNA foi kriadu na 2014, en parseria ku *Trust for Public Land* (Fundu di Terenus Públiku), y el foi un di kes priméru kinta urbanu déntu di portaria “*right-to-farm*” (direitu di splorason agríkula)!

Nos ekipa ta inklui

- Nefertiti Lawrence, Prizidenti di Fundu di Terenu di GTNA
- Louis Elisa, Prizidenti di GTNA
- Michael Anthony Bryan II, Konsultor di *Design* Paizajístiku
- Roderick McLaren, Tizoreru di GTNA
- Lucille Culpeper Jones, konselhera di operasons y ménbru di Konselhu di GTNA
- Tamara Lawrence, spesialisista na idukason
- Joyce Lawrence, ménbru di Konselhu di GTNA
- Mark Sutherland, prizidenti di siguransa, ménbru di Konselhu di GTNA
- Stacy Sutherland, agrikultora urbana y storiadora

Crawford Street Park (parki)



The Garrison-Trotter Farm (kinta)



Konsultor di *Design* Paizajístiku
Michael Anthony Bryan II



- Kontestu di Prujétu
 - Planu di Florésta Urbanu
 - Parserus Munisipal/Fókus di Prujétu
- Objektivus
- Prujétus
- Planus di Ativason

Planu di Florésta Urbanu

Kriadu pa Kámara Munisipal di Boston

- Karta di prizidenti di kámara
- Grandi sforsu di kulaborason
 - ◆ Pruduson privadu y públiku involvidu:
 - 4 objetivu
 - 7 stratéjia
- Roxbury Identifikadu komu Zóna di Prioridadi

HOW CAN WE EXPAND CANOPY?

Tree canopy can be expanded in three primary ways: caring for existing trees to ensure longevity, protecting existing trees from removal, and planting new trees. These are the three approaches that can be considered by public and private property owners to expand canopy in our neighborhoods. The neighborhood strategies outlined in this chapter focus on defining areas for new planting and promote methods for planting the right tree in the right place.

Sidadi di Boston, Stoss, y otus. Siténbru di 2022

Goal 1: Equity First

Focus investments and improvements in under-canopied, historically excluded and socially vulnerable areas



Goal 2: Proactive Care and Preservation

Ensure trees/tree canopy are proactively cared for



Goal 3: Community-Led

Ensure community priorities drive urban forest decisions and management



Goal 4: Prioritize and Value Trees

Increase awareness and buy-in regarding the importance of trees in Boston across the public and private sectors



Strategy 1: Expand and Reorganize Urban Forestry Management



Strategy 2: Proactively Protect and Care for Existing Trees



Strategy 3: Strategically and Equitably Expand Canopy



Strategy 4: Make Space and Improve Conditions for Trees



Strategy 5: Improve Communications - Both Process & Content



Strategy 6: Improve Information Collection and Sharing



Strategy 7: Build and Support a Local Tree Workforce



Kuzê k'é un zóna di prioridadi?

Árias ku fatoris di vulnerabilidadadi susial y maior nisisidadi di kópa di arvis

“Pontu di partida pa konvérsas permanenti y splorason na terenu”

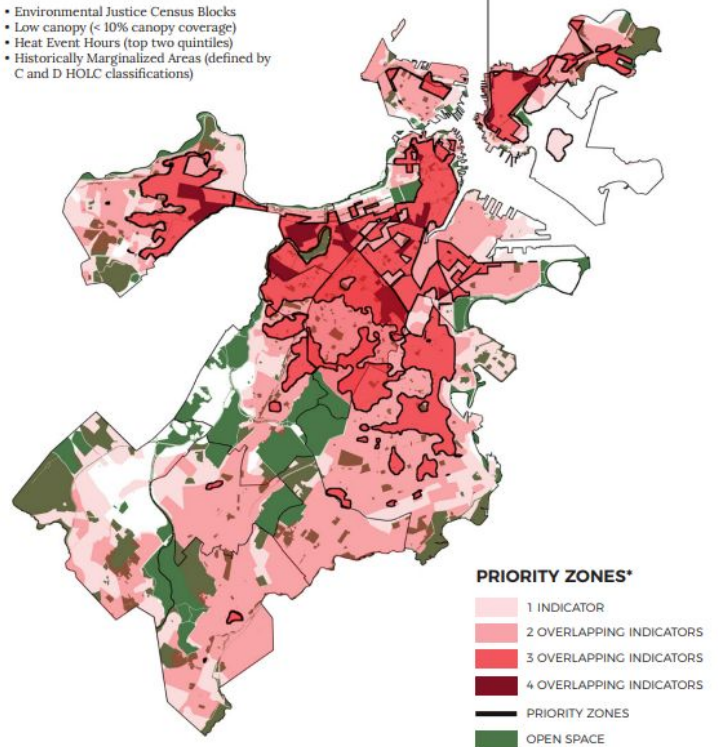
*Sidadi di Boston, Stoss, y otus
Siténbru di 2022*

WHAT IS A PRIORITY ZONE?

Priority zones are a way to focus efforts, but should not prevent action in areas not highlighted in this map. Many priority populations, for example, live in areas with relatively high overall canopy, but in which canopy cover is declining.

Priority zones are determined by three or more overlapping prioritization indicators, which include:

- Environmental Justice Census Blocks
- Low canopy (< 10% canopy coverage)
- Heat Event Hours (top two quintiles)
- Historically Marginalized Areas (defined by C and D HOLC classifications)

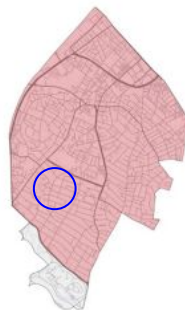


*Priority zones are areas with three or more overlapping indicators.

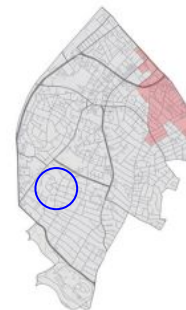
PRIORITY INDICATORS

Indikadoris

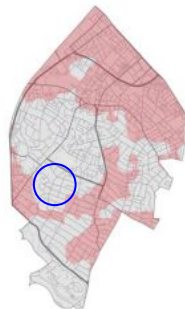
Justisa Ambiental y Marjinalizason
Stóriku ta abranje zónas di prujétu



Environmental Justice Communities



Low Canopy



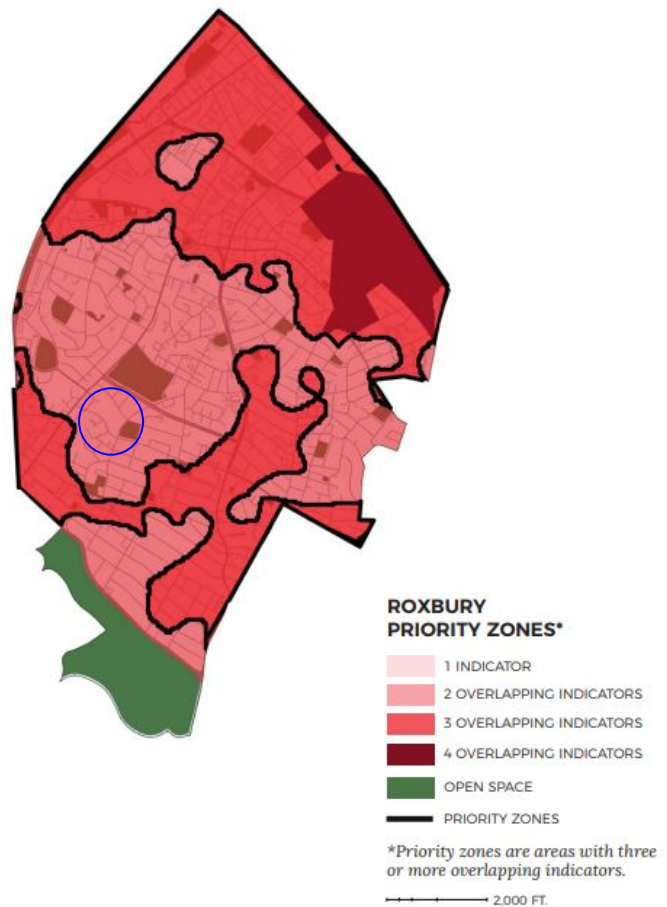
Heat Event Hours



Historic Marginalization

*Sidadi di Boston, Stoss, y otus
Siténbru di 2022*

*Sidadi di Boston, Stoss, y otus
Siténbru di 2022*



Grow Boston

Fundus pa *Designers*

Apoiu pa Agrikultura Urbanu

GrowBoston's goal is to increase food production and support local food producers in Boston, including gardeners, farmers, beekeepers, and more.

Our work builds on the long-term work of the Mayor's Office of Housing (MOH). MOH, through the Grassroots Program, has been supporting the development of community gardens, urban farms, food forests, and other open spaces through land disposition and capital funding for more than 25 years.

We will be working to increase community gardens, urban farms, and other food-growing spaces throughout Boston. We will support the implementation of innovative food production strategies, such as rooftop growing, vertical growing, and hydroponics.

<https://www.boston.gov/departments/growboston>

Lei di Prizervason di Kumunidadi

Fundus pa manutenson y konservason rigular

Invistimentu na enbelezamentu di prujétu y na inpaktu di artístiku/kultural

Prizervason Stóriku di patrimóniu di Zóna

With the adopted Community Preservation Act, the City created a special Community Preservation Fund. Financed by a 1-percent property tax surcharge and a state match, the City raises over \$20 million annually to fund:

- ▶ affordable housing
- ▶ historic preservation, and
- ▶ open space and recreation.

Many cities and towns adopted the Community Preservation Act soon after the law was passed in 2000. They've received millions for affordable housing, historic preservation, open space and recreation projects. Boston is now among the other cities and towns that have adopted the act. We implemented our first round of funding in 2018.

<https://www.boston.gov/community-preservation>

Justisa Anbiental, Riziliénsia y Parkis

Opurtunidadis di involve moradoris
nun vida saudável

Involvimentu di nisisidadis di sidadi,
inkluindu:

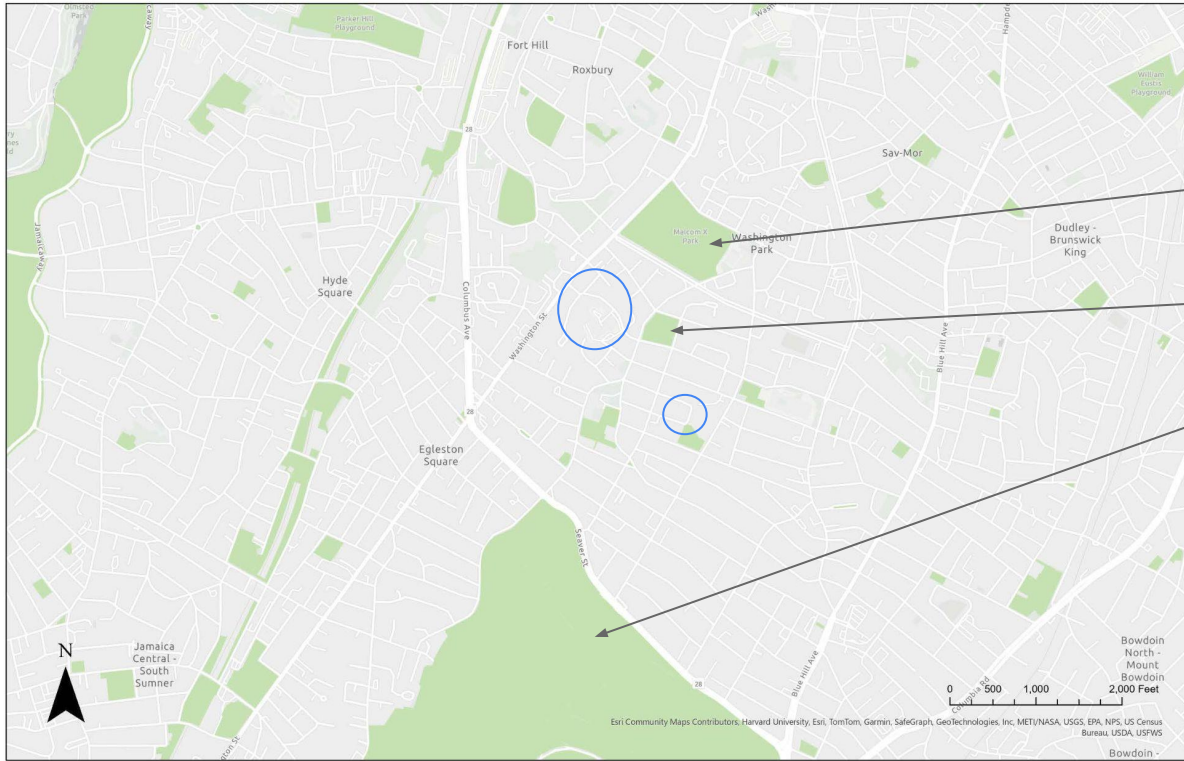
- Kópa di Arvi Urbanu
- Infiltrason di águ/Mitigason di inundason
- Riziliénsia a Kalor

Our committee focuses on environmental issues in the City, including:

- ▶ air, land, and water pollution
- ▶ recycling and sustainability
- ▶ waste disposal and land improvement, and
- ▶ energy savings and efficiency.

We concern ourselves with conserving and developing our City's parks. We want to ensure residents have access to open spaces.

<https://www.boston.gov/departments/city-council/environmental-justice-resiliency-and-parks>

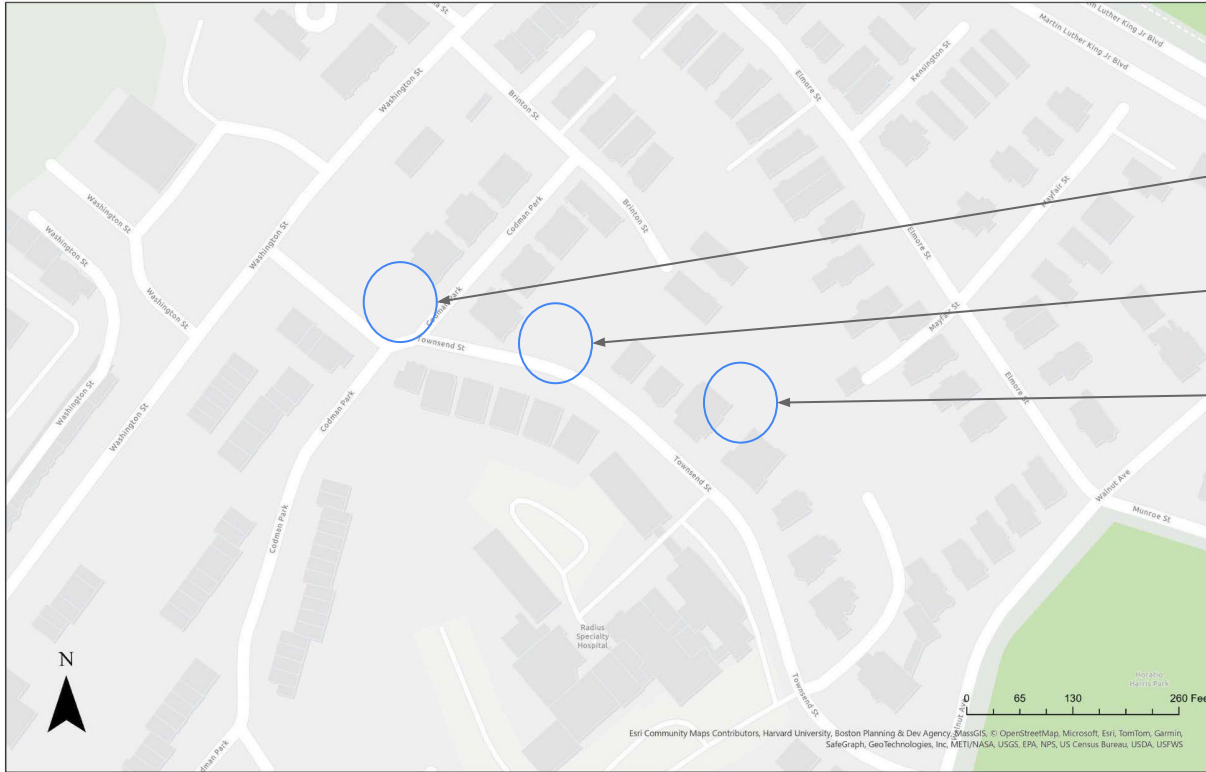


Malcolm X Park

Horatio Harris Park

Franklin Park

**Spasu Abertu Izistenti
Sidadi di Boston, GIS, Michael Bryan II**



8 Townsend St

20 Townsend St

48 Townsend St

**Lóti di Townsend St
Sidadi di Boston, GIS, Michael Bryan II**



S20-S21 Holworthy

Lóti di Holworthy & Trotter School
Sidadi di Boston, GIS, Michael Bryan II

Objetivus di Kulaborason

- Konvíviu di kumunidadi
- Vida saudável
- Idukason
- Arti y Kultura
(Enbelezamentu)
- Prizervason stóriku



Prujétus

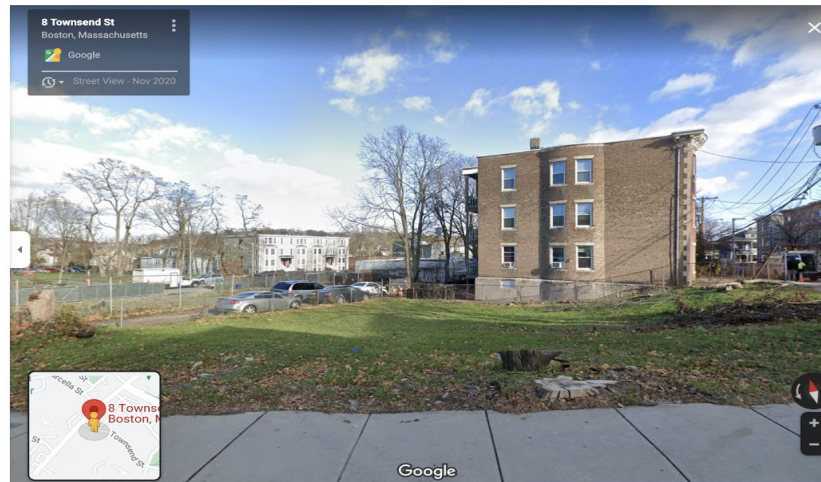


1º Fázi: 8 Townsend Street

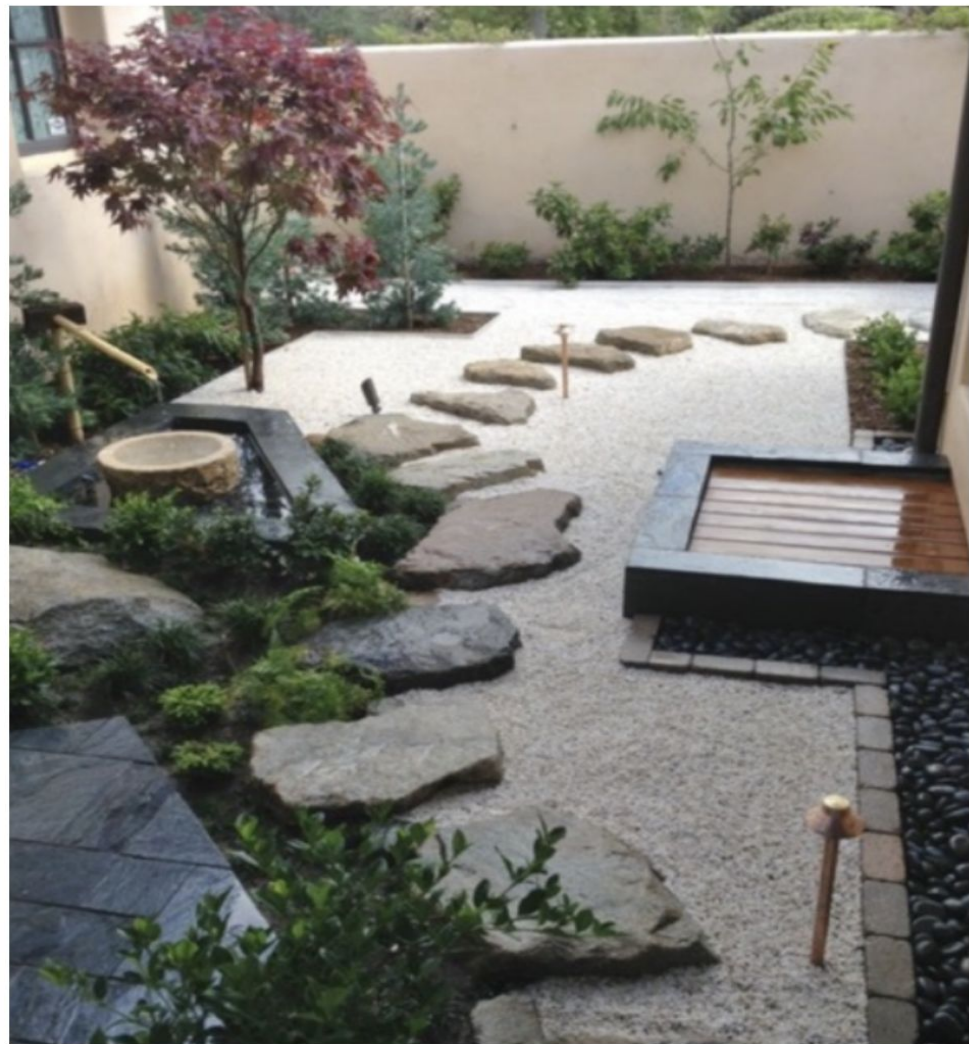
*Prujétu aktualmenti en andamentu pa
inisia konstruson, ku inaugurason
privistu pa maiu di 2024.*

Site at 8 Townsend

This site has been unoccupied for years.



S20-S21
Holworthy Street
Jardin Zen Alma
Wright





Perinials

GTNA Marker Stones

Path
Indicated per lined hatch

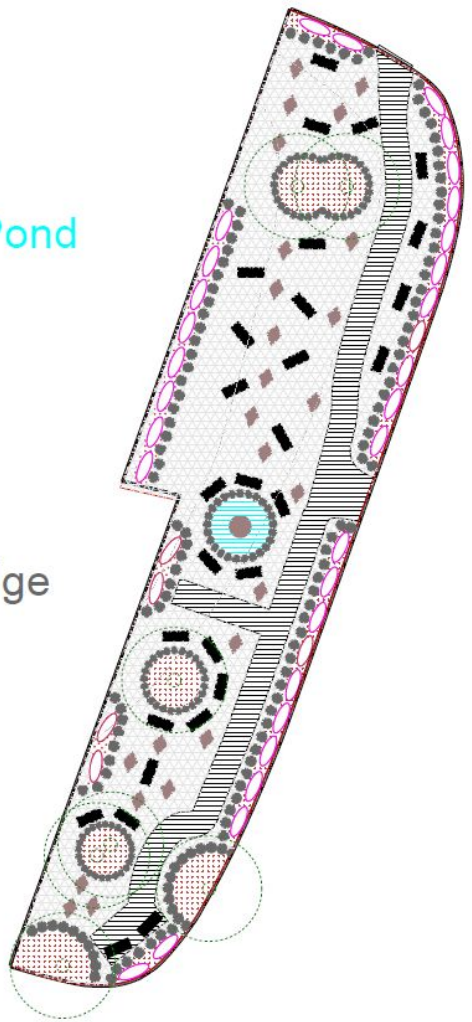
puddingstone Fountain/Pond

Trees

Gravel

Seating

Puddingstone/Granite Edge



48 Townsend Street Oázis di Órta Kumunitáriu







Ilimentus di Lokal



**20 Townsend
Street
Jardin Urbanu
Organizadu**



Site at 20 Townsend

This site has never been occupied due to the outcropping of pudding stone on the site .



GTNA Puddingstone Plaques

Plantings

- Trees
- Perennials/Pollinators
- Understory

Seating

Ledge Railing

Puddingstone Outcrop



Planus di Ativason

Kes lokal li ta ben ser ativadu au longu di anu, pa involve moradoris di kumunidadi vizinhu

Opurtunidades di ativason ta ben inklui, entri otus:

- Aulas di Ben-Star
- Agrikultura Urbanu
- Paléstras na Ar Livri, Salons di Beléza, Klubis di Livru
- Ativason di Feriadus

Perspetivas pa futuro y Prujétus: Mimorializason y pruteson di spasus stóriku na Roxbury

- Lótis dizokupadu ten maior opurtunidadadi di sirbi komu spasu abértu/verdi
- Opurtunidadis di Subsídus y Finansiamentu
- Instalasons y Spuzisons (Konsultor di *Design*)

Parserias y apoiu

- Aseitandu risponsabilidadi di kes prujétu li, GTNA ta ben involve parserus lokal pa kria rilasons ku organizasons públiku y privadu di sidadi y non sô.
- Kel-li ta inklui torna involve ku organizasons di pasadu. Y tanbe kontinua konvérsas atual.
- Un obrigadu spisial pa *National Museum of African Artists* (Muzeu Nasional di Artistas Afrikanu) pamódi el resebe GTNA au longu di anu, pa riunions y ivéntus. Nu sta ansiozu pa kontinua es trabadju di kulaborason.

Perguntas???