

Preferred Design

*Central Artery/Tunnel Parcel 2 Park Design
Meeting 4 - November 19, 2019*



**boston planning &
development agency**

Project Team / Schedule

Concept Design Options Feedback

Preferred Design

Feedback Exercise

Project Team



**boston planning &
development agency**

Kennan Rhyne

Senior Planner II, Project
Manager & Contact Person

Lauren Shurtleff

Acting Director of Planning

Jill Zick

Landscape Architect



John Romano

Director of the Office of
Outdoor Advertising



Jesse Brackenbury

Executive Director

Rebecca McKevez

Capital Projects Manager

Rachel Lake

Marketing & Community
Affairs Manager

ASK +

**Unknown
Studio**

Sara Cohen

Principal & Project Manager,
ASK+

Claire Agre

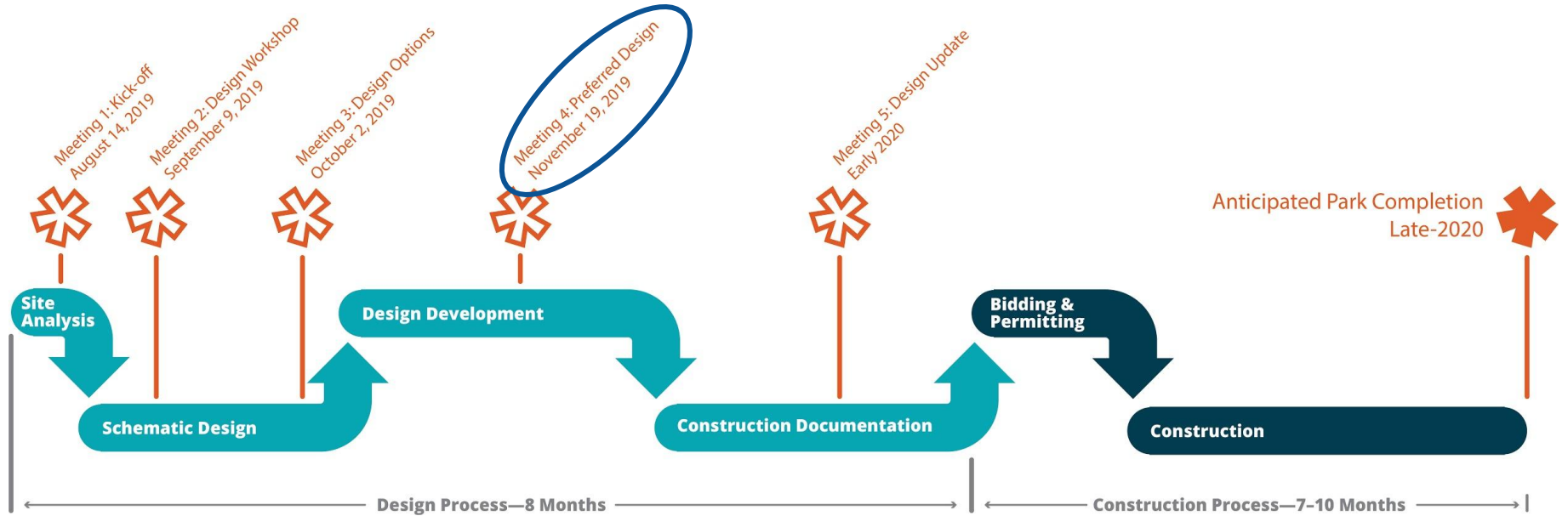
Design Principal,
Unknown Studio

Meg Baldwin

Landscape Designer,
Unknown Studio



Project Timeline





**boston planning &
development agency**

Project Team / Schedule

Concept Design Options Feedback

Preferred Design

Feedback Exercise

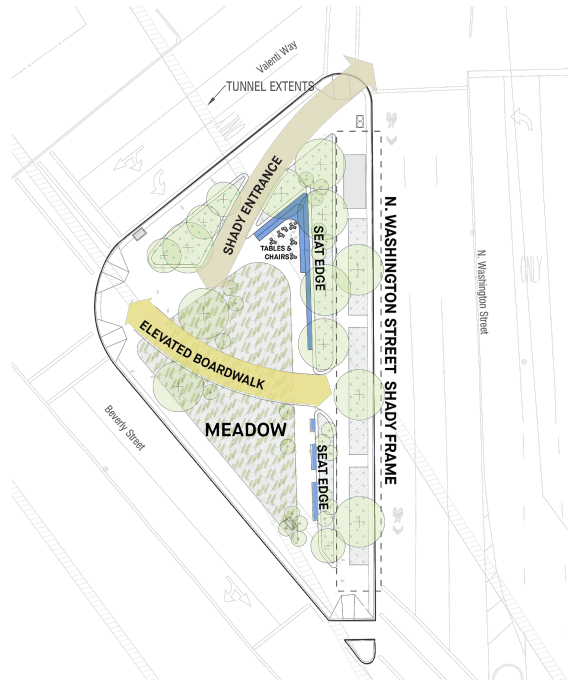
What do people want most?



What concerns people most?



3 Concepts



Meadow



Grove



Garden

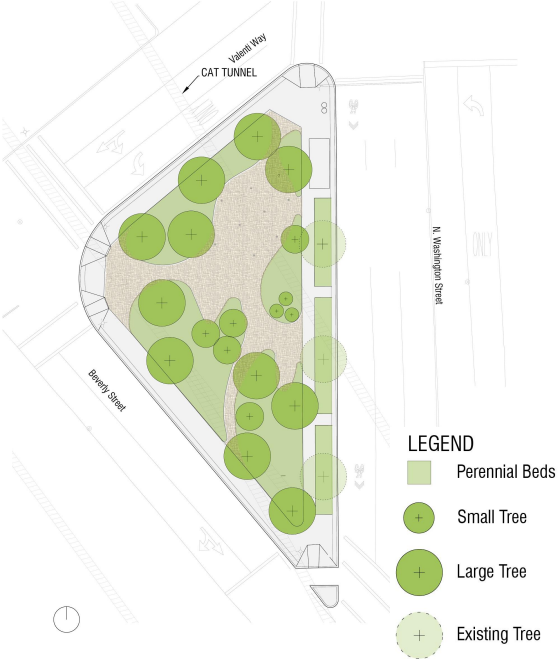
Which is the greenest?



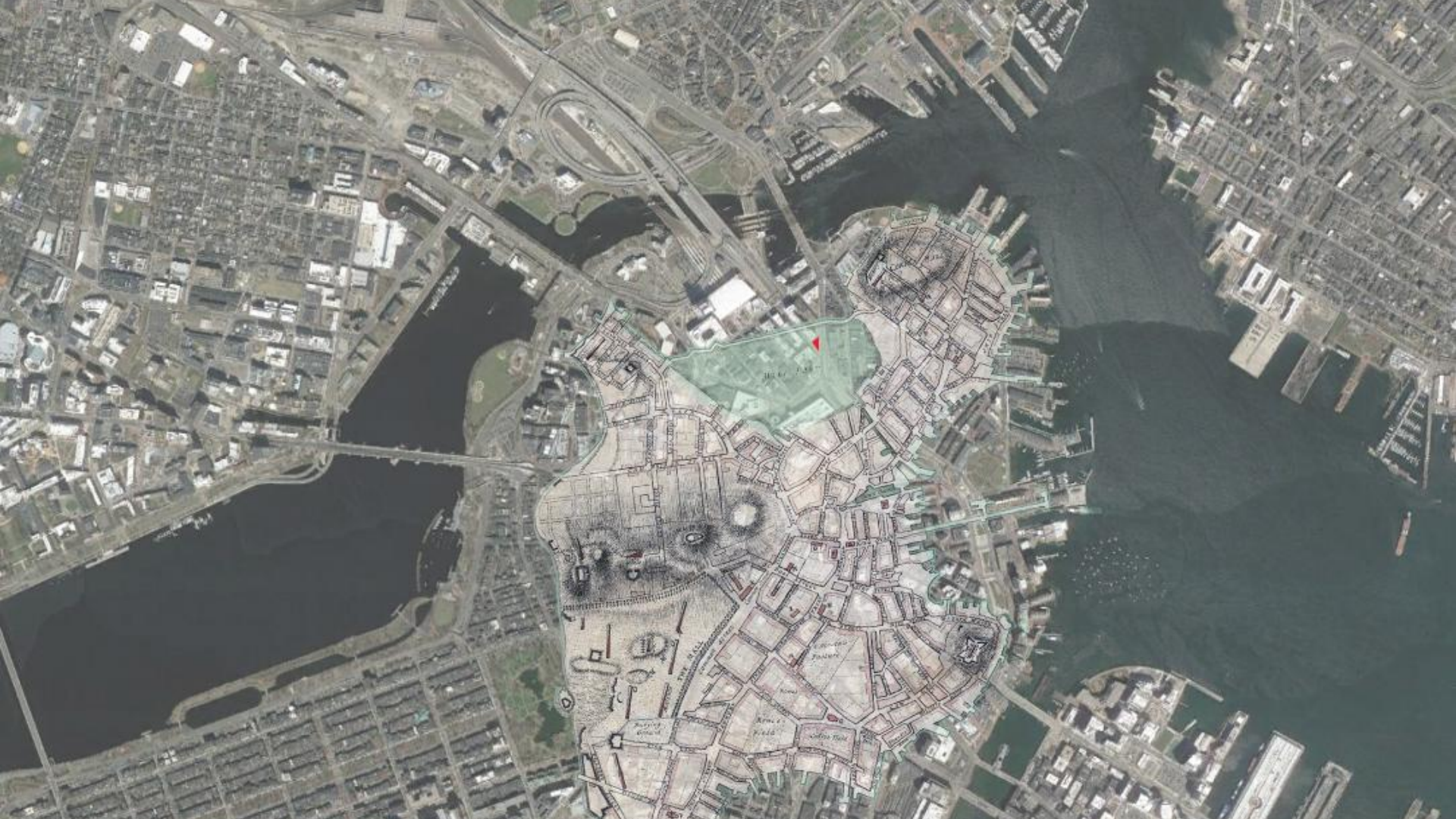
Meadow
 Paved: 62%
 Planted: 38%



Grove
 Paved: 64%
 Planted: 36%



Garden
 Paved: 67%
 Planted: 33%



Recommended Scheme

Top Wishes:

Greenest with trees, natives, seasonality

Open views

Consolidated 'active edge'

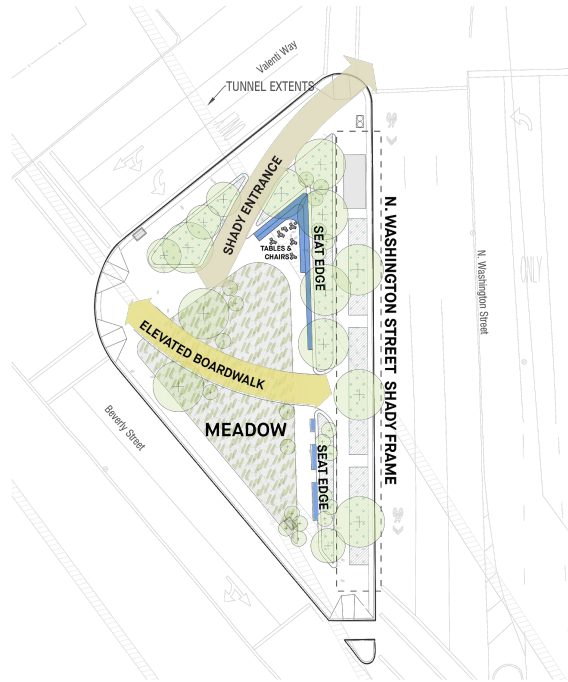
Considerations moving forward:

More visibility to Washington

Winter appeal

Maintenance

Lighting



Meadow



HISTORY



MEADOW



LUNCHTIME



EVENING TIME



WEEKEND



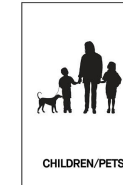
MOMENTS OF SOLITUDE



FLEXIBLE TABLES & CHAIRS



ALONE



CHILDREN/PETS



FRIEND OR PARTNER



**boston planning &
development agency**

Project Team / Schedule

Concept Design Options Feedback

Preferred Design

Feedback Exercise

1. Considerations

Maintenance



Rose Kennedy Greenway.org



Source: The Rose Fitzgerald Kennedy Greenway Conservancy

Funding

Parcel 1B/1C Project	\$500,000
<i>(The Beverly and Courtyard by Marriott)</i>	
Boston Garden Project	\$100,000
<i>(The Hub on Causeway)</i>	
88 North Washington St.	\$36,000
<i>(hotel project pending)</i>	

Budget

Design Budget	\$100,000
Construction Budget	\$400,000
Construction Management	\$100,000

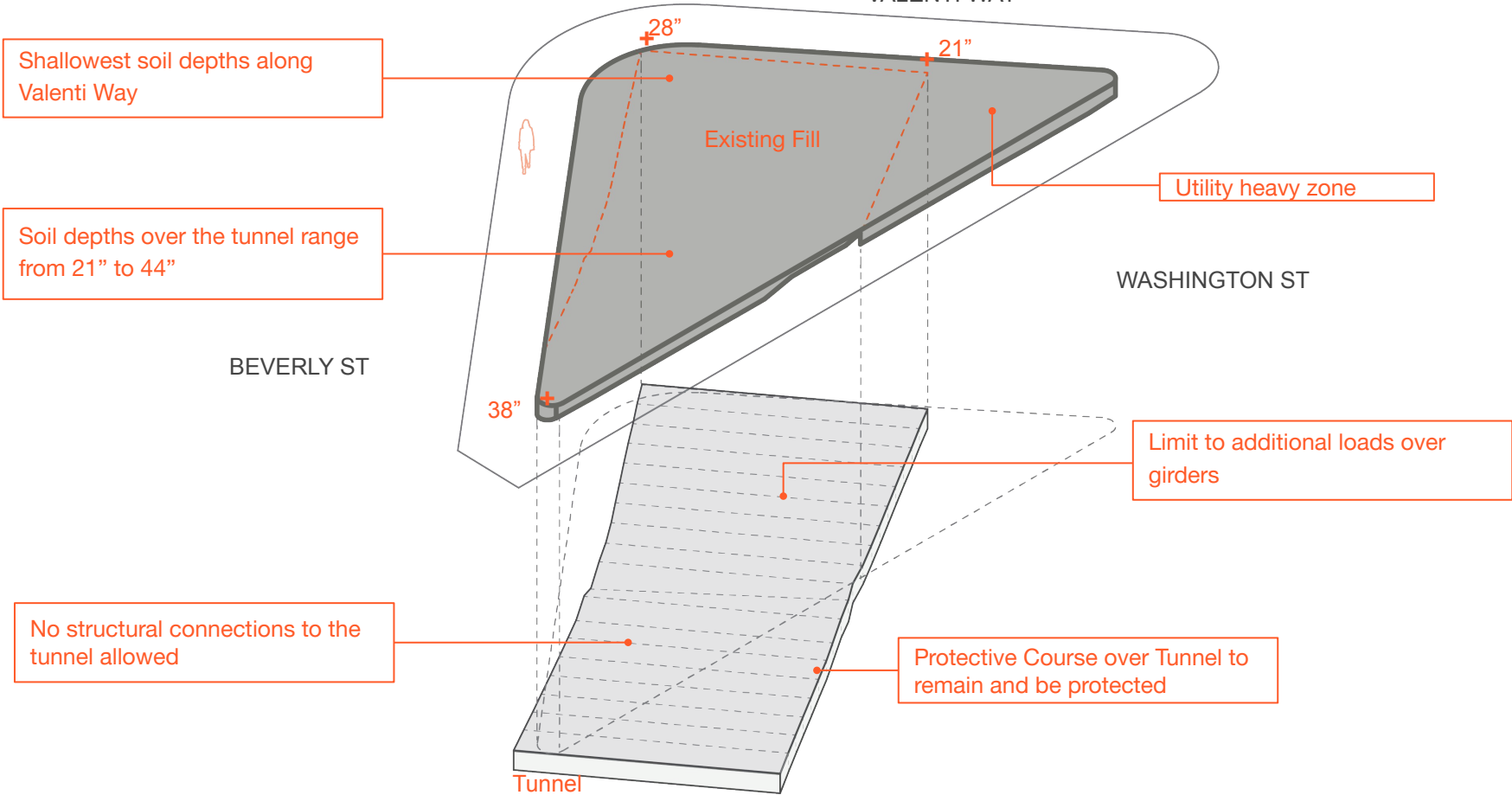
Staging & Timing

2018/2019

- **Sidewalk Upgrades**
Spring 2020
- **Design Documentation Complete**
Spring 2020
- **Construction Starts**
Summer 2020

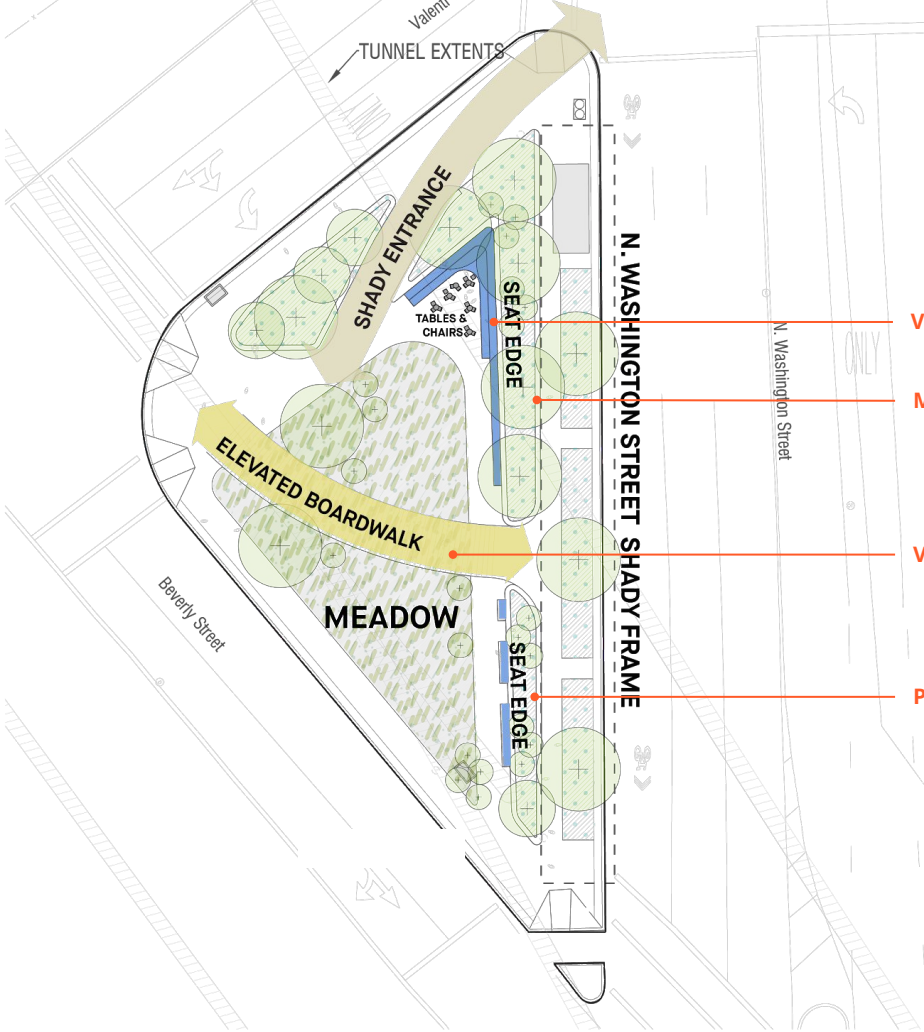


Construction Challenges



2. Updated Plan

Design Review



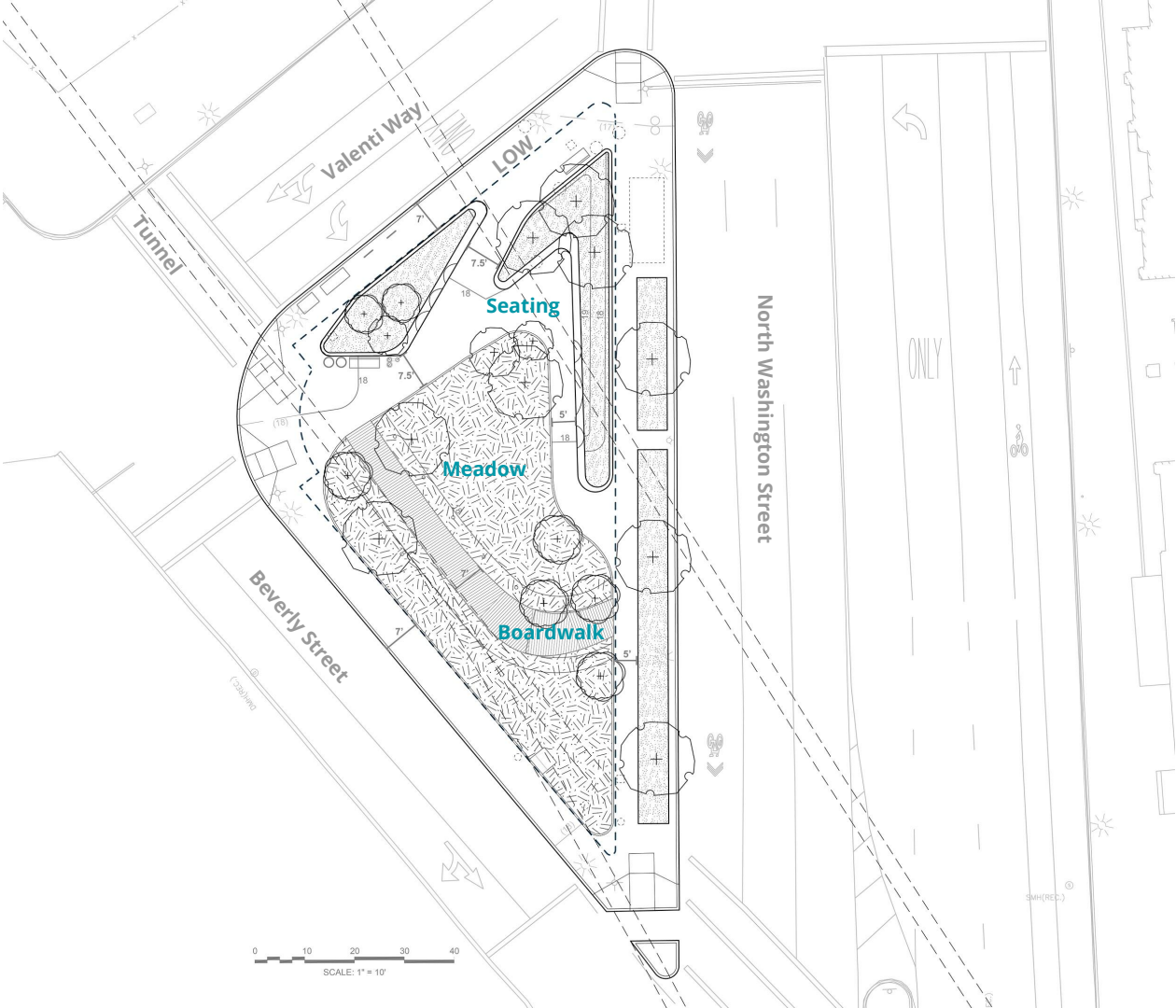
Visibility to/from Washington

Materiality & Cost of Walls

Views, Directionality, & Location

Planter Feasibility for Planting & Cost

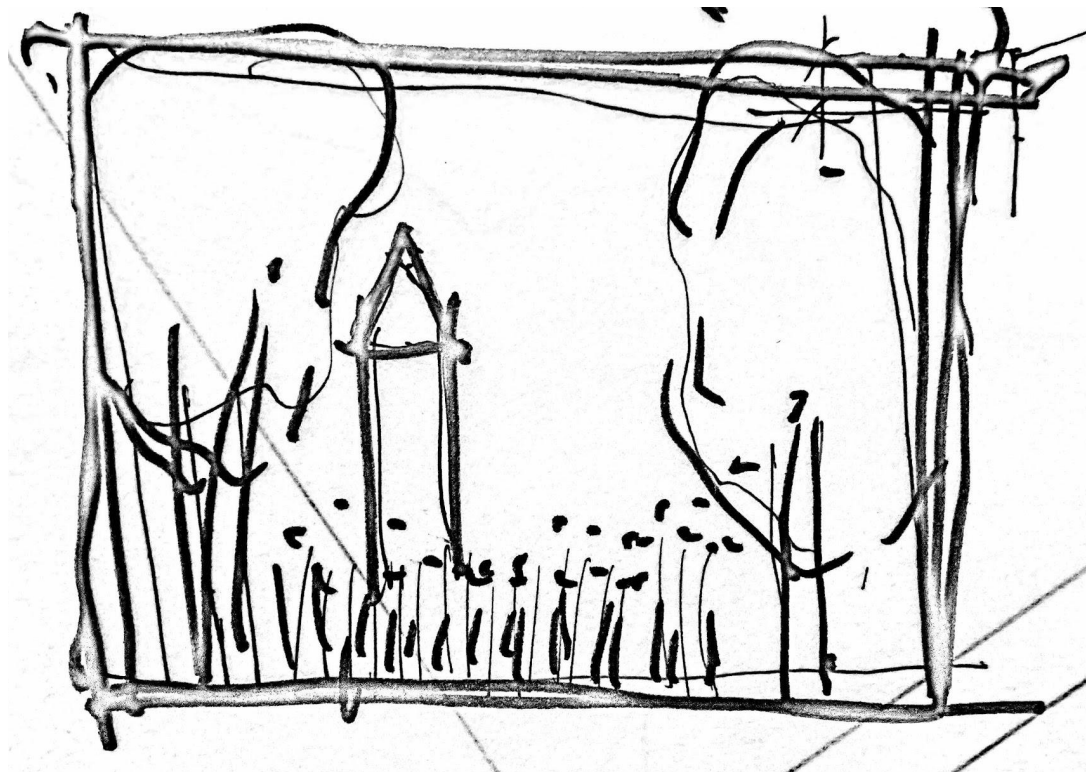
Updated Plan



0 10 20 30 40
SCALE: 1" = 10'

3. Boardwalk Journey

A Frame for the City

















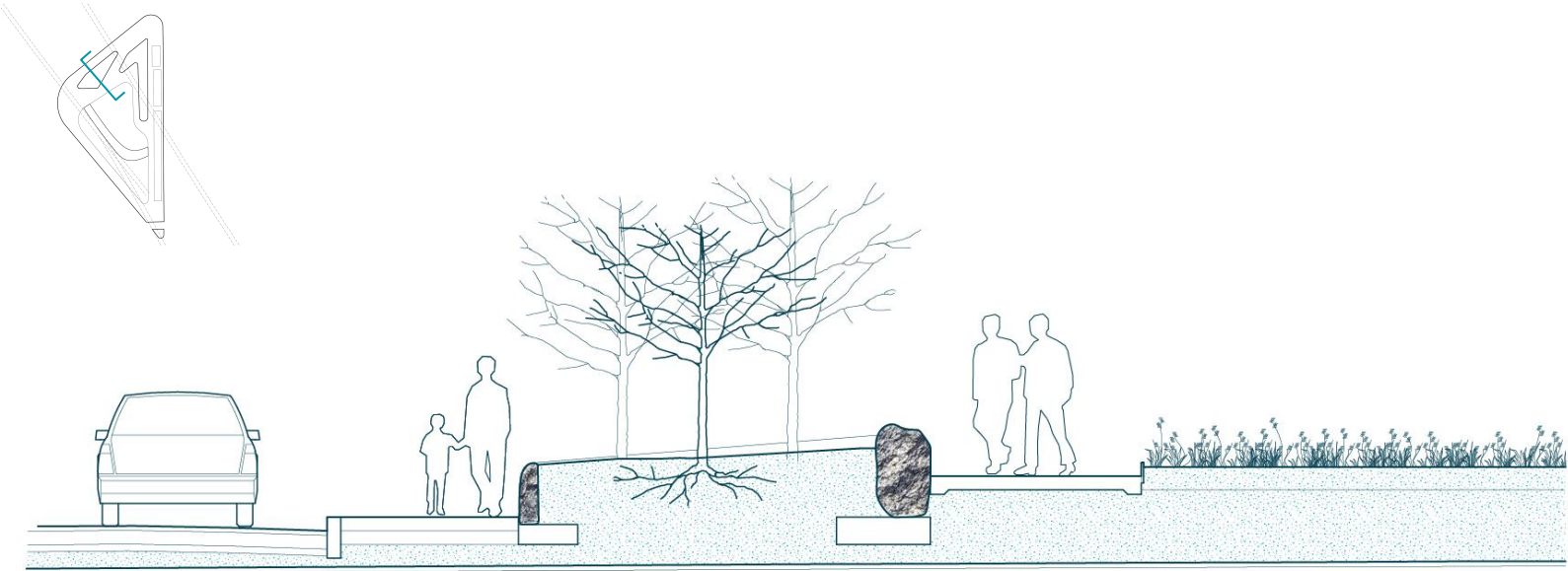






4. Sections

Section at Valenti Way



Valenti Way

Sidewalk

Planter

Walkway

Meadow

Beverly Street to North Washington Street Section



Beverly Street

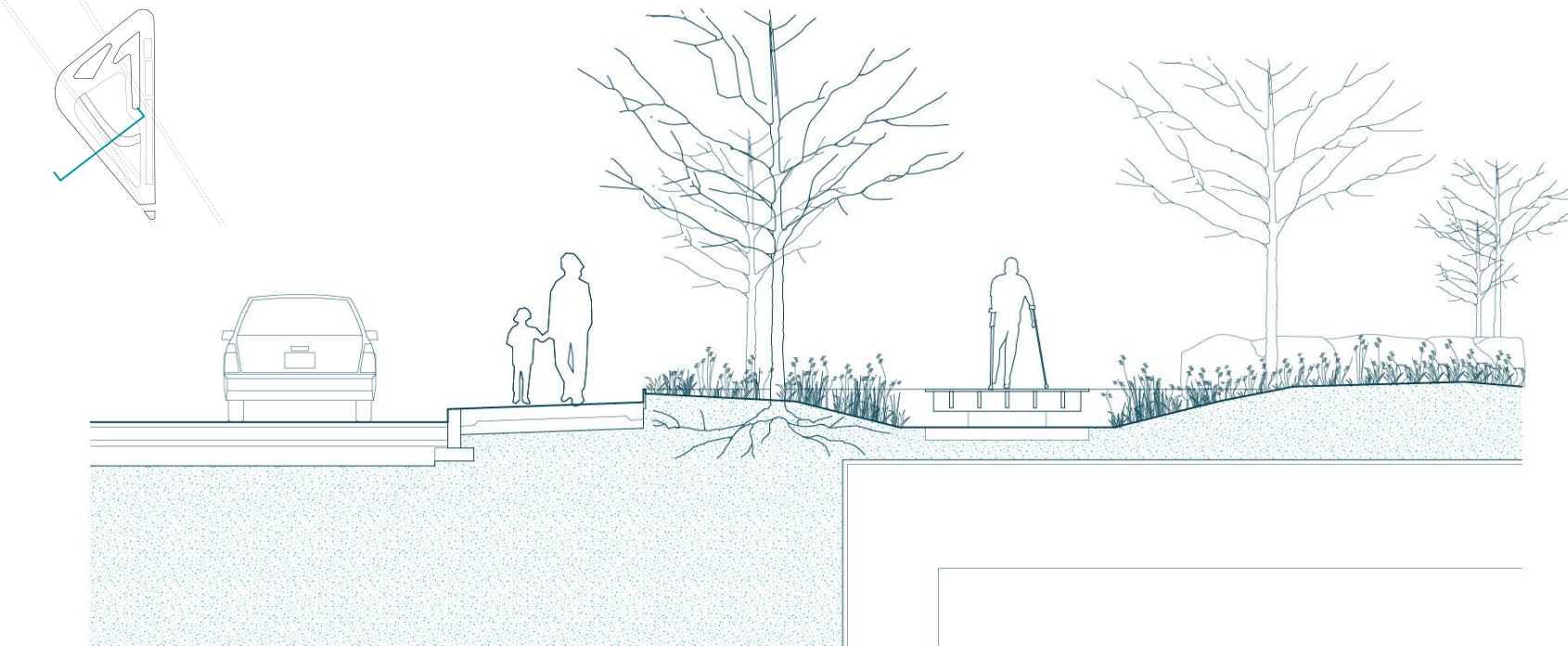
Park Entrance

Meadow

Walkway &
Planter

Washington
Street

Beverly Street Section



Beverly Street

Sidewalk

Boardwalk

Meadow

5. Plant Palette

A Seasonal Clearing in the City



July



November

Choosing from what works on the Greenway



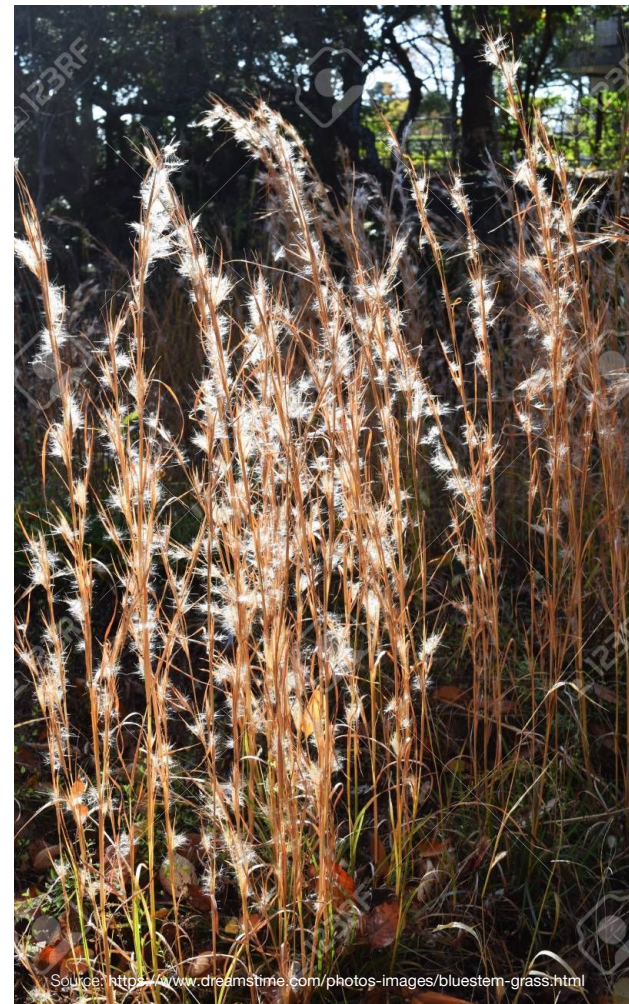
Source: <https://www.ecgrowers.com/Monarda-p/2804.htm>

Spotted beebalm, *Monarda punctata*



Source: <https://plants.ces.ncsu.edu/plants/pycnanthemum-muticum/>

Mountain mint, *Pycnanthemum muticum*



Source: <https://www.dreamstime.com/photos-images/bluestem-grass.html>

Broomsedge, *Andropogon virginicus*



Source: <https://www.hybg.org/>

Cardinal flower, *Lobelia cardinalis*



Source: <https://specialplants.net/>

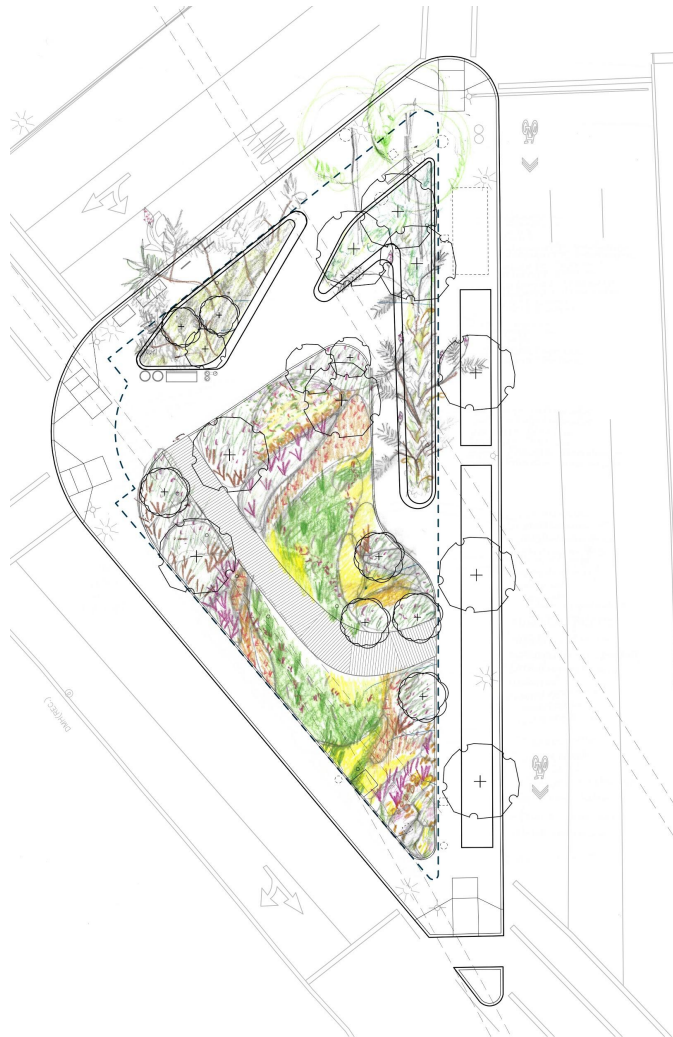
Blue star, *Amsonia hubrichtii*



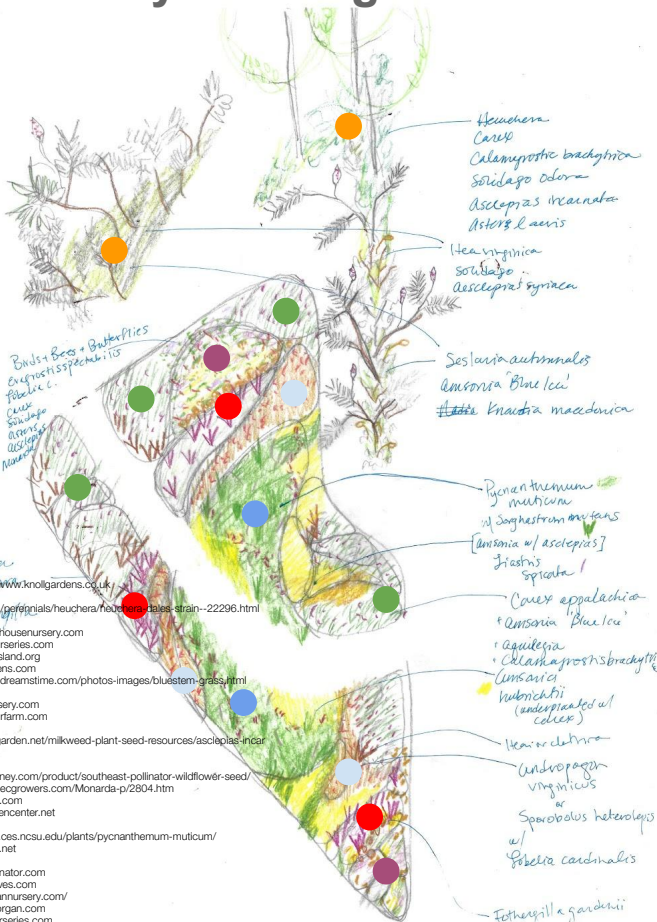
<https://mtcubacenter.org/trials/baptisia/>

False indigo, *Baptisia* spp.

Planting Plan



Understory Planting Palette



- (a.) Source: autumngarden.com
(b.) Source: https://www.burpee.com/professionals/heuchera-herbaceous-coral-stain-22296.html
(c.) Source: crocus.com
(d.) Source: https://stonehouse-nursery.com
(e.) Source: northcreeknurseries.com
(f.) Source: www.kiawahisland.org
(g.) Source: sunlightgardens.com
(h.) Source: https://www.dreamstime.com/photos-images/bluestem-grass-image
(i.) Source: garden.org
(j.) Source: newmoonnursery.com
(k.) Source: heritageflowerfarm.com
(l.) Source: https://monarchbutterflygarden.net/milkweed-plant-seed-resources/asclepias-incarnata-swamp-milkweed/
(m.) Source: https://mountainsweethoney.com/product/southeast-pollinator-wildflower-seed/
(n.) Source: https://www.ecgrowers.com/Monarda-pr2804.htm
(o.) Source: amycampion.com
(p.) Source: louisvillegardencenter.net
(q.) Source: bygl.ou.edu
(r.) Source: https://plants.ces.ncsu.edu/plants/pycnanthemum-multicoma/
(s.) Source: specialplants.net
(t.) Source: Meg Baldwin
(u.) Source: northeastpollinator.com
(v.) Source: malcolmalives.com
(w.) Source: http://hoffmannnursery.com/
(x.) Source: thompson-morgan.com
(y.) Source: northcreeknurseries.com
(z.) Source: http://hoffmannnursery.com/
(aa.) Source: northcreeknurseries.com
(bb.) Source: shop.wildseedproject.net
(cc.) Source: jardinjasmijn.com



● BOOMERANG

● BIRDS BEES BUTTERFLIES

● SHRUB BREAK

● THE CLEARING

● SWOOP BREAK

● SHADE NOOKS

Spring Palette



Source: www.ballyrobertgardens.com

Nodding onion,
Allium cernuum



Source: longfield-gardens.com

Ornamental onion,
Allium Globemaster



© Hoffman Nursery, Inc.
Source: <http://hoffmannursery.com/plants/P16>

Carex,
Carex appalachica



Source:
<https://www.burpee.com/perennials/heuchera/heuchera-dales-strain--22296.html>

Coral bells,
Heuchera americana
'Dale's Strain'

Shrub Palette - Summer



Chokeberry,
Aronia arbutifolia



Staghorn sumac,
Rhus typhina



Red osier dogwood,
Cornus sericea



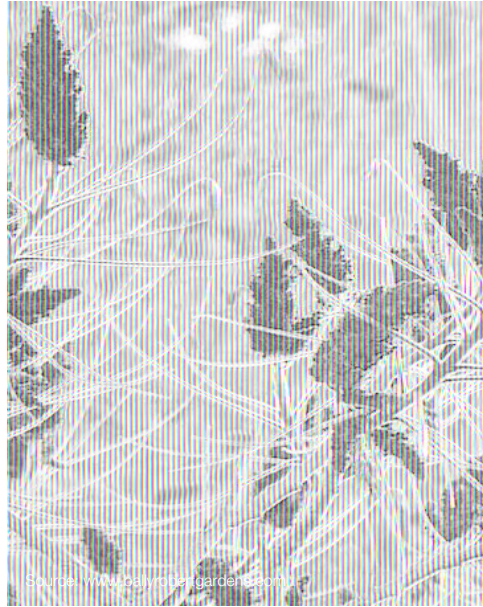
Dwarf fothergilla,
Fothergilla gardenii

Shrub Palette - Fall to Winter



Source: wintergardenforeplay.avantgardensne.com

Chokeberry,
Aronia arbutifolia



Source: www.dailymotion.com/garden3.com/

Staghorn sumac,
Rhus typhina



Source: bighosu.edu

Red osier dogwood,
Cornus sericea



Source: amycampion.com

Dwarf fothergilla,
Fothergilla gardenii

Tree Palette



Source: <https://plants.ces.ncsu.edu/plants/sassafras-albidum/>

Sassafras,
Sassafras albidum



Source: <https://www.vdberk.co.uk/trees/nyssa-sylvatica/>

M.S. Black gum,
Nyssa sylvatica



Source: https://www.wildflower.org/plants/result.php?id_plant=quga

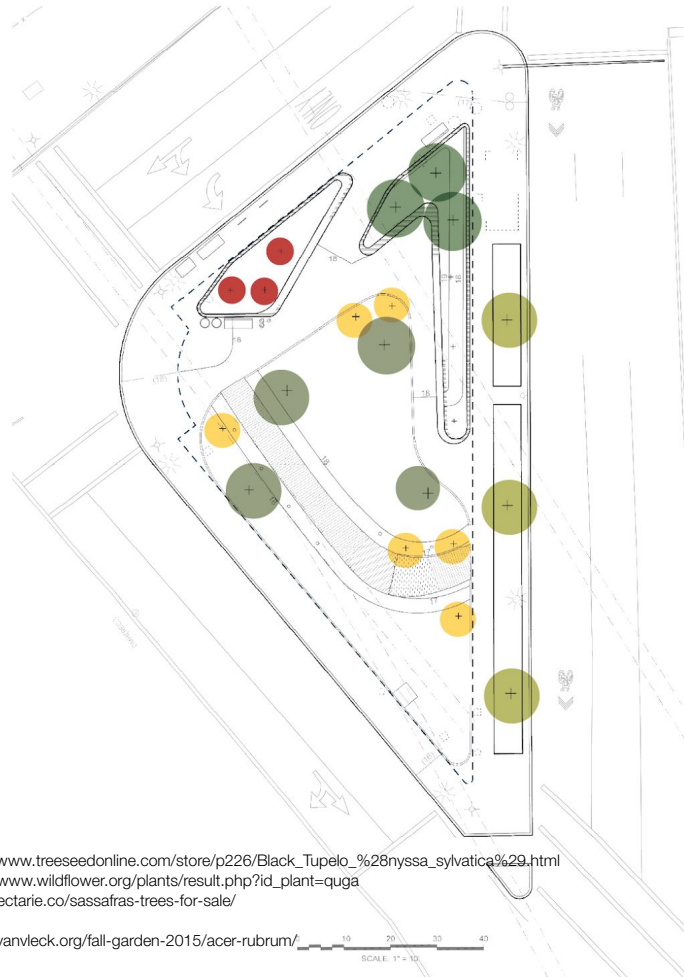
Swamp white oak,
Quercus bicolor



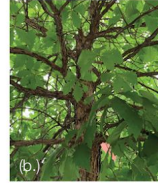
Source: <https://vanvleck.org/fall-garden-2015/acer-rubrum/>

Red maple,
Acer rubrum

Canopy Planting Plan



Black gum, *Nyssa sylvatica*



Swamp white oak, *Quercus bicolor*



Sassafras, *Sassafras albidum*



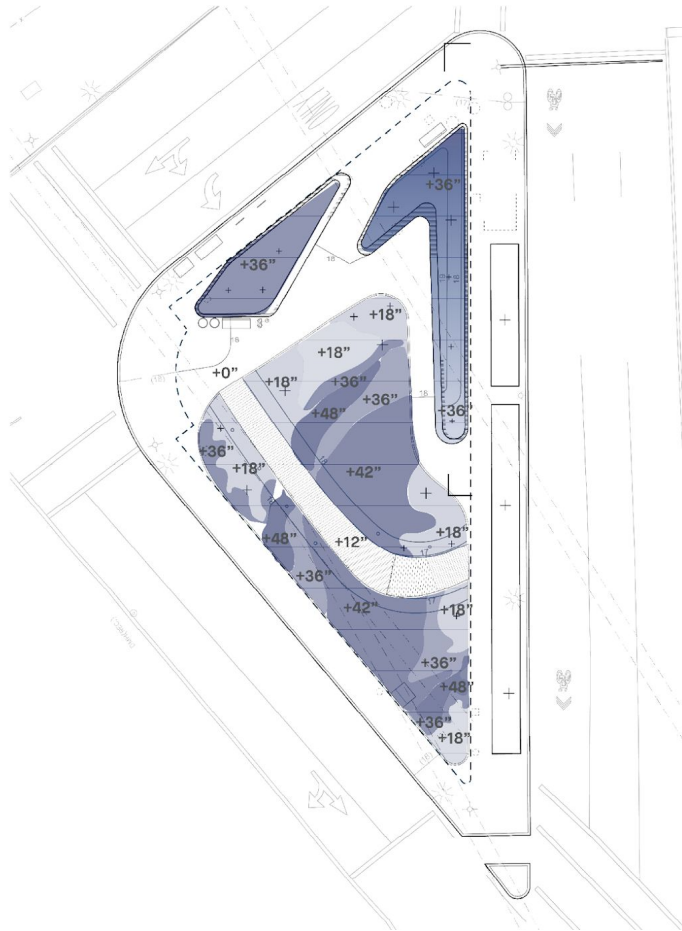
Staghorn sumac, *Rhus typhina*



Red maple, *Acer rubrum*

(a.) Source: https://www.treeseedonline.com/store/p226/Black_Tupelo_%28nyssa_sylvatica%29.html
(b.) Source: https://www.wildflower.org/plants/result.php?id_plant=quga
(c.) Source: <http://nectarie.co/sassafras-trees-for-sale/>
(d.) Source: ASK +
(e.) Source: <https://vanleck.org/fall-garden-2015/acer-rubrum/>

Planting Heights Relative to Adjacent Walkway



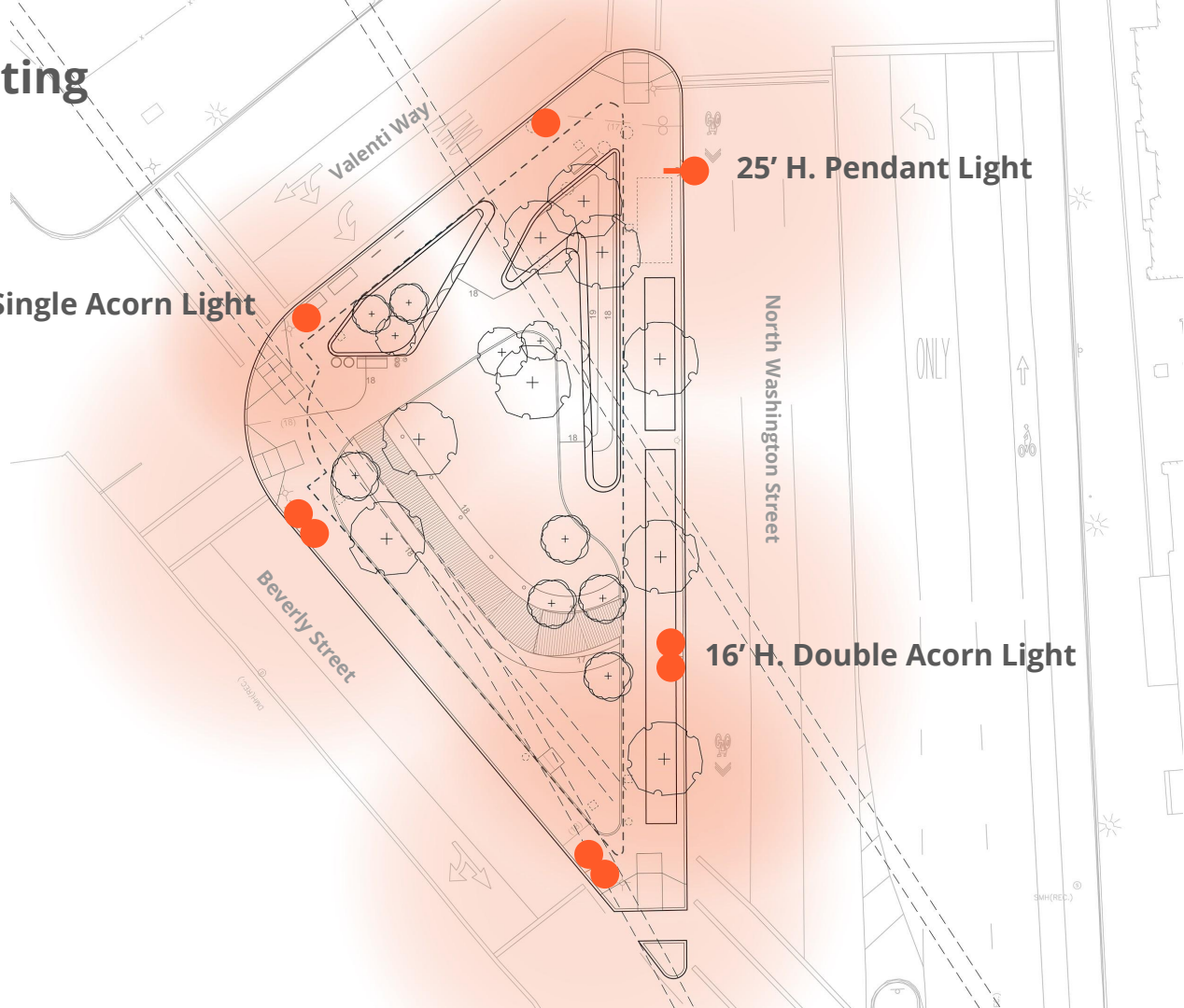
5. Lighting Concept

Existing Lighting

12' H. Single Acorn Light

25' H. Pendant Light

16' H. Double Acorn Light



Existing Fixtures



Existing Lighting with new Plan

Conclusions:

- Existing lighting is uneven across the site
- Boardwalk zone has 1.4fc
- Seating area has .35fc

Goals:

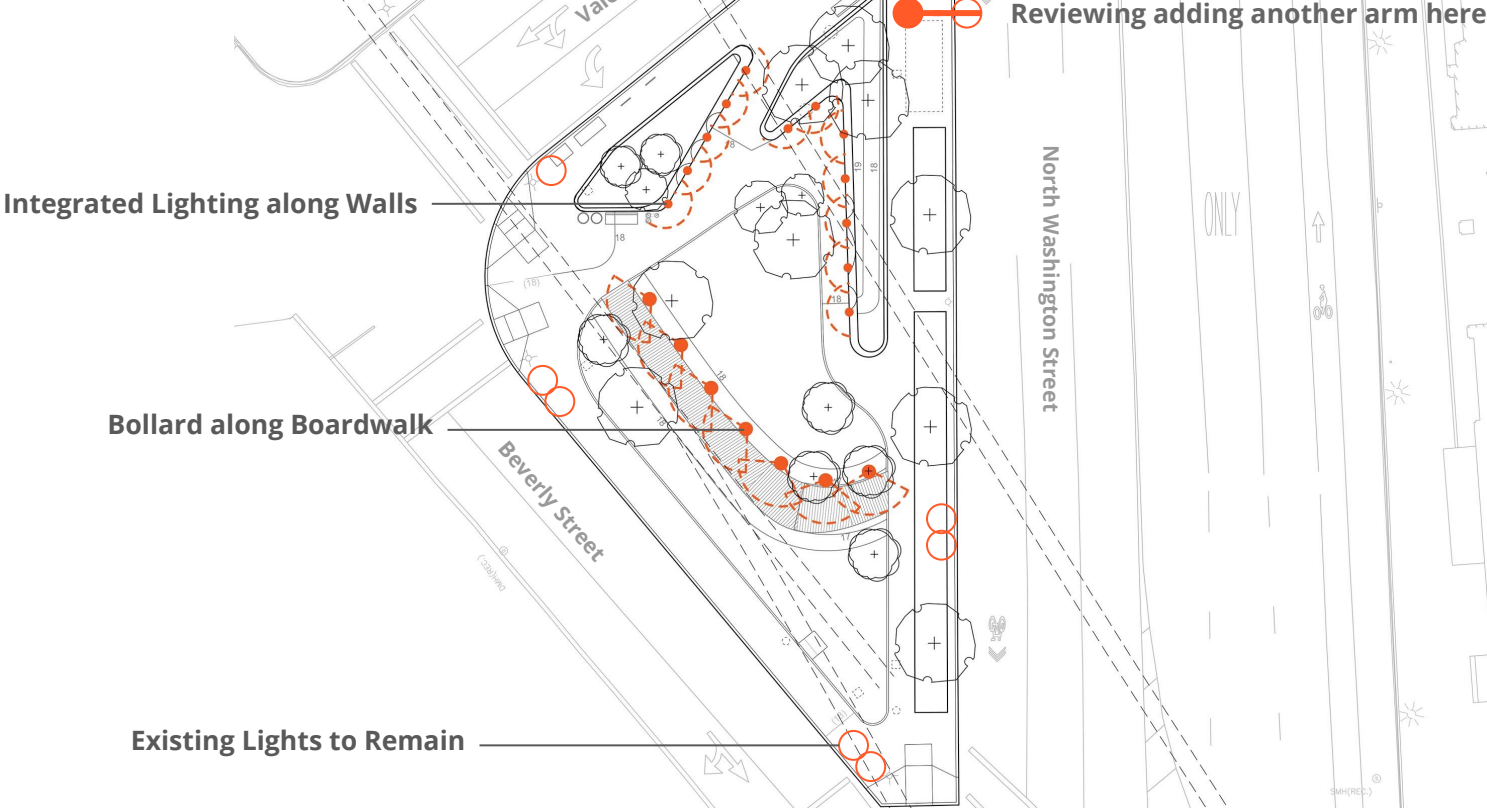
- Provide uniform lighting across the site
- Maintain existing fixtures on site
- Highlight site features: granite and the boardwalk



Darkest Area

Brightest Area

Lighting Concept



Proposed Fixtures



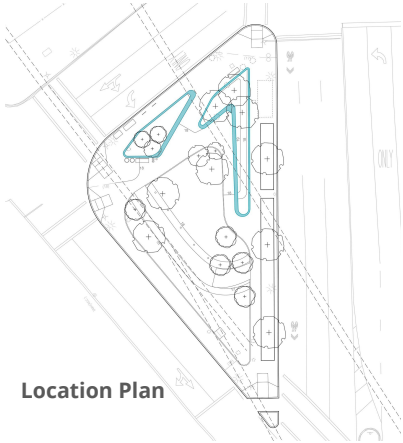
Bollard Options



In-wall Options

5. Material Palette

Big Dig Granite



Location Plan

Considerations:

- Color
- Program: curbs, seating, walls
- Assembly & Details
- Cost



Granite Seat Walls & Curbs



Perspective



Source: <https://www.walkbostonhistory.com/collage-of-boston.html>



Source: landezine.com



Source: <https://patrickcullina.com>

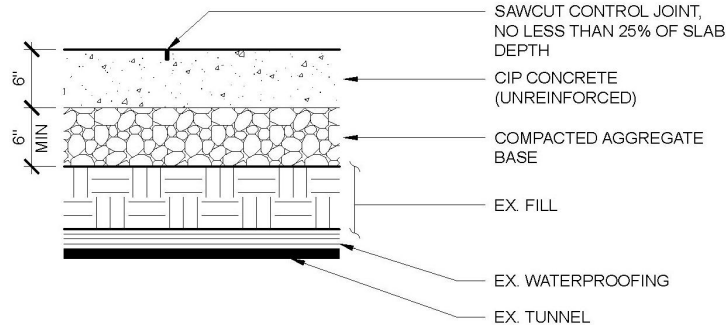
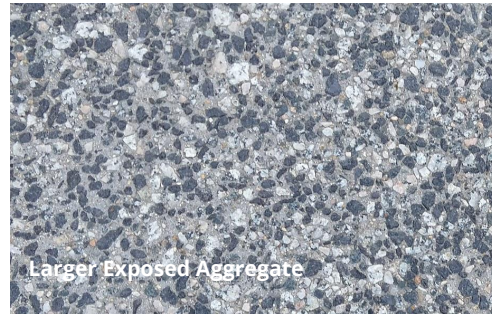
Cast-in-place Concrete Sidewalks



Location Plan

Considerations:

- Finish Options
- Program: Standard versus Exposed Aggregate
- Cost

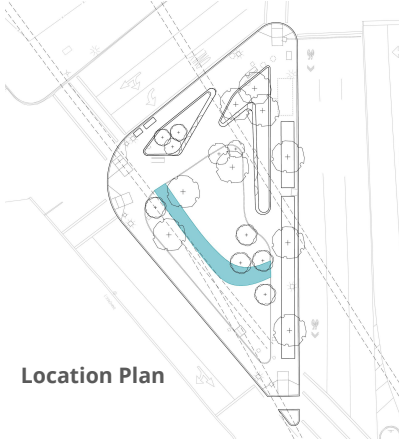


Detail



City of Boston Standard Color

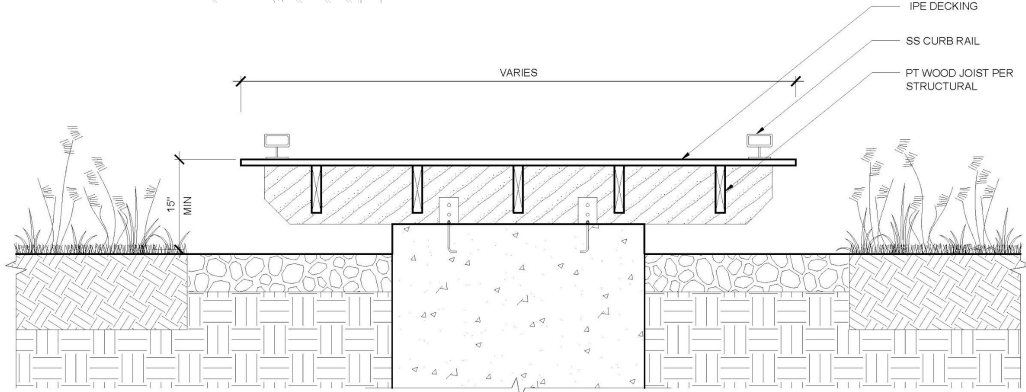
Boardwalk Materials



Location Plan

Considerations:

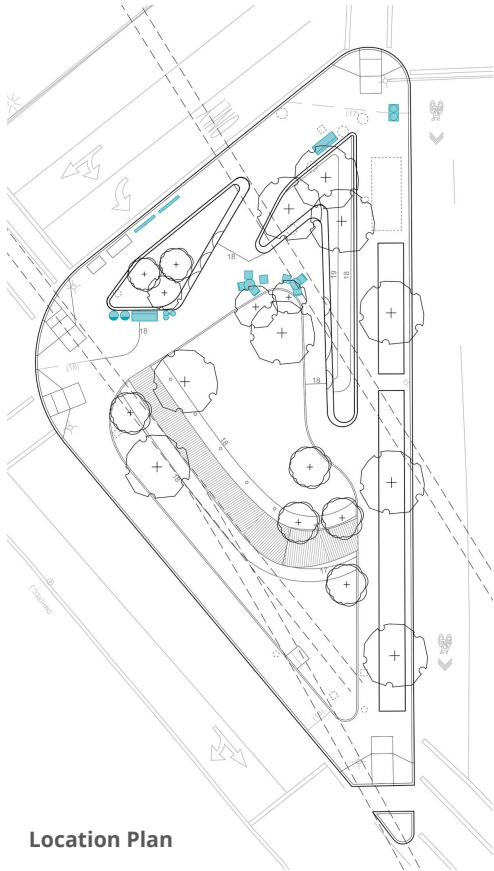
- Color
- Program: curbs, seating, walls
- Assembly & Details
- Cost



Detail



Furnishings



Location Plan



ADA Bubbler with Dog Fountain
Manufacturer: Elkay



Greenway Bike Rack
Manufacturer: Dero



Greenway Tables & Chairs
Manufacturer: Landscape Forms



Greenway Wood Bench
Manufacturer: Victor Stanley



Greenway Trash/Recycle Bin
Manufacturer: Landscape Forms



Greenway Power Bollard
Manufacturer: PEDOC



**boston planning &
development agency**

Project Team / Schedule

Concept Design Options Feedback

Preferred Design

Feedback Exercise



**boston planning &
development agency**

Want to provide more feedback?

There will be 1 more Public Meeting!

Meeting 5: Design Update

For more information, visit: <http://bit.ly/greenwayp2>
