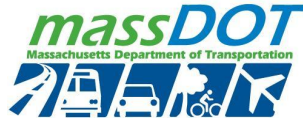


Park Construction Information Meeting

Central Artery/Tunnel Parcel 2 Park Design



**boston planning &
development agency**



**ASK +
Unknown
Studio**

June 2, 2021

Agenda

6:00–6:10 pm

Welcome, Virtual Meeting Overview

6:10–6:15 pm

Project Schedule Update

6:15–6:25 pm

Parcel 2 Park Design Overview

6:25–6:45 pm

Construction Timeline and Process

6:45–7:30 pm

Share Your Feedback

Meeting Recording

At the request of community members, the BPDA will be recording this meeting and posting it on the Central Artery/Tunnel Parcel 2 Park Design project webpage at <http://bit.ly/greenwayp2> for those who are unable to attend the Zoom meeting live. The recording will include the presentation, Q&A, and public comments afterwards. Also, it is possible that participants may be recording the meeting with their phone cameras or other devices. If you do not wish to be recorded during the meeting, please turn off your microphone and camera.

Zoom Tips

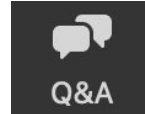
Welcome! Here are some tips on using Zoom for first-time users.

Your controls should be available at the bottom of the screen.

Clicking on these symbols activates different features:



Mute/unmute (you will remain muted until a host gives you access)



Q&A to ask questions throughout the presentation



Turn video on/off (your video will remain off until a host gives you access)



Raise hand to ask for audio/video permission at the end of presentation



Meeting Format

- We want to ensure that this conversation is a pleasant experience for all.
- **All participants will be muted until the Q&A portion of the conversation.** Attendees will be able to submit questions via the chat feature or to raise their hands to ask a question. A moderator will unmute individual participants as they ask their question.
- Please be respectful of each other's time. We ask that participants limit their questions so that all may participate in the discussion. Please wait until all attendees have the opportunity to ask a question before asking a second.
- You can always set up a conversation with **Kennan Rhyne** at **Kennan.rhyne@boston.gov**

Project Team



**boston planning &
development agency**

Kennan Rhyne

Interim Deputy Director
for Downtown &
Neighborhood Planning

Lauren Shurtleff

Director of Planning

Jill Zick

Landscape Architect



John Romano

Director of the Office of
Outdoor Advertising



Rebecca McKevez

Capital Projects Manager

Chris Cook

Executive Director

Rachel Lake

Marketing & Community
Affairs Manager

ASK +

**Unknown
Studio**

Sara Cohen

Principal & Project Manager,
ASK+



Raymond Delmonico

Owner, Project Superintendent





**boston planning &
development agency**

Welcome, Virtual Meeting Overview

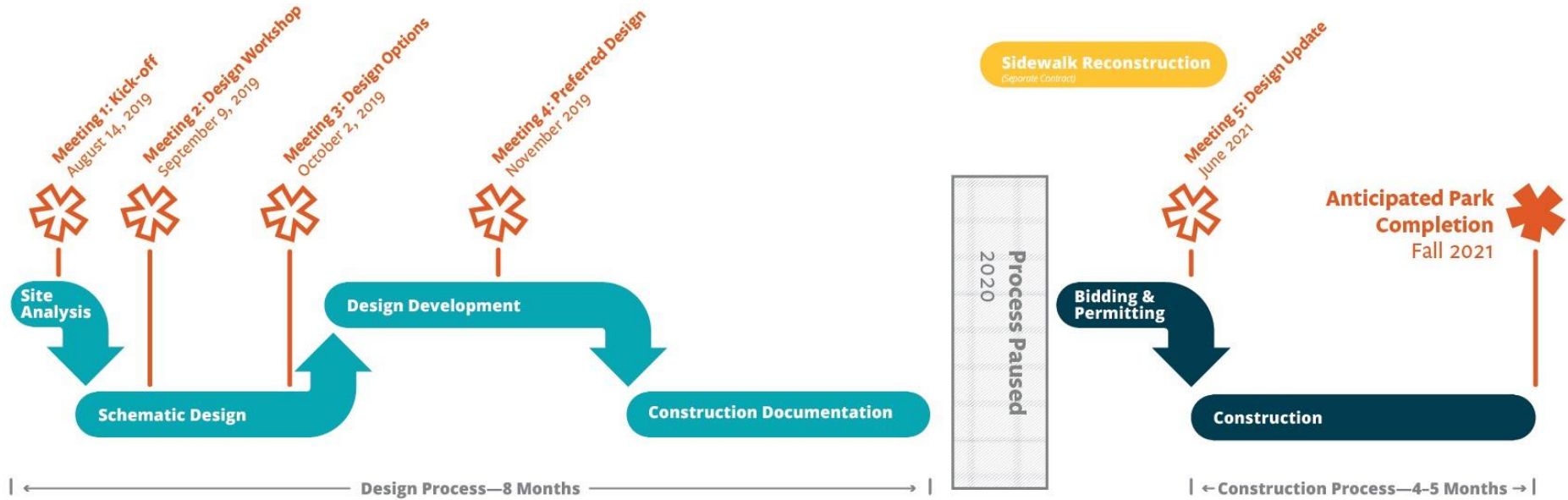
Project Schedule Update

Parcel 2 Park Design Overview

Construction Timeline and Process

Share Your Feedback

Project Timeline



Funding

Parcel 1B/1C Project \$500,000
(The Beverly and Courtyard by Marriott)

The Hub on Causeway \$100,000

New Funding Sources

Gov. Center Garage \$205,000

Greenway BID \$99,250

Greenway Conservancy \$81,750

MassDOT \$100,000

BPDA* \$46,000

Budget

Design Budget \$100,000

Construction Budget \$887,000

Construction Contingency \$100,000

Construction Management \$45,000



*BPDA will prepay for the pending mitigation funds from 88 North Washington Street (\$36,000) and the Onyx Hotel Addition (\$10,000).



**boston planning &
development agency**

Welcome, Virtual Meeting Overview

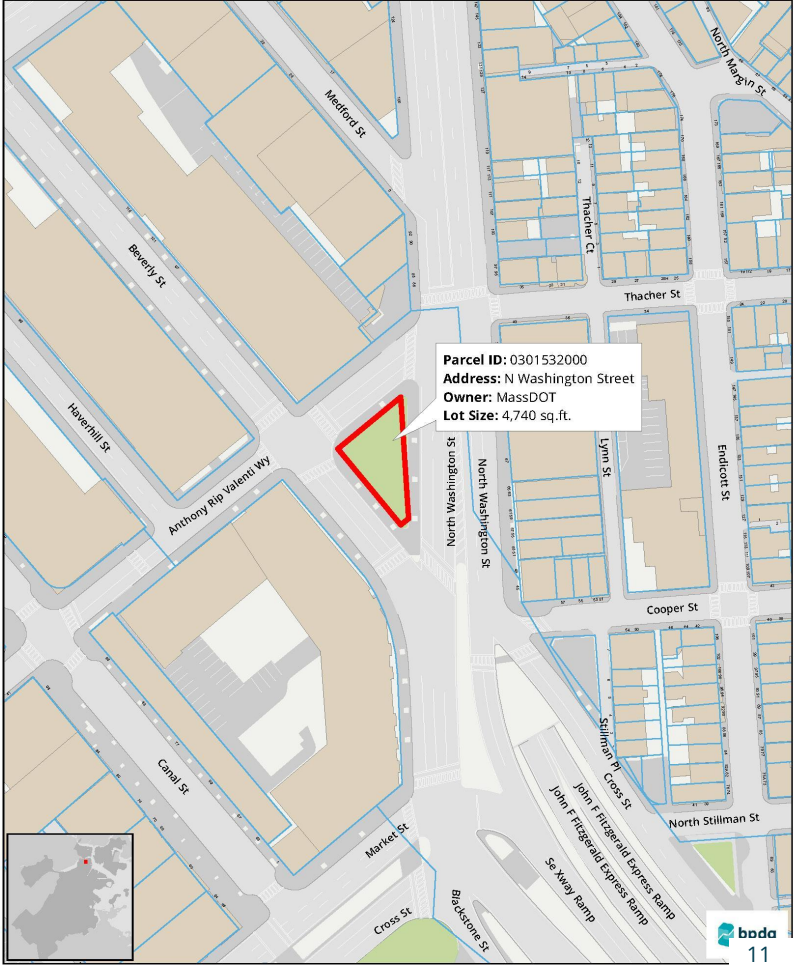
Project Schedule Update

Parcel 2 Park Design Overview

Construction Timeline and Process

Share Your Feedback

Site Location



Site Photos



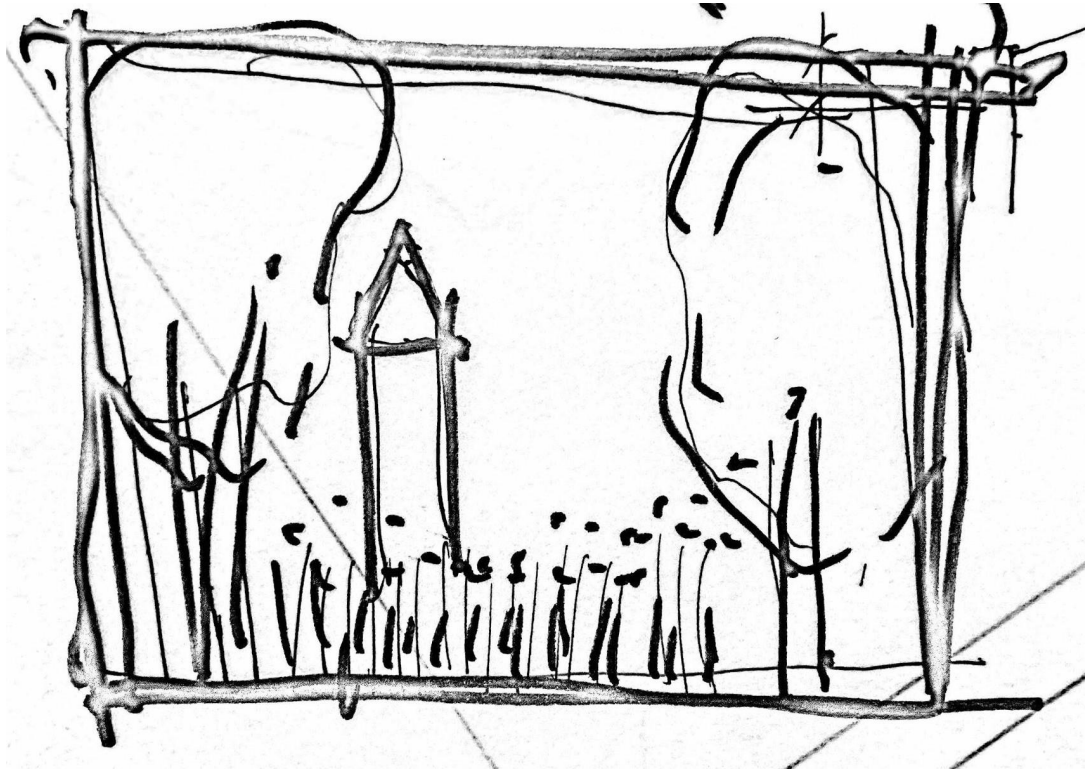
Site Plan

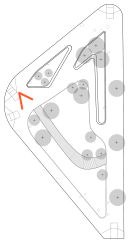


North Meadow on the Greenway

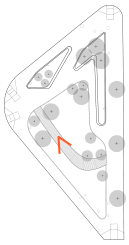
Boardwalk Journey

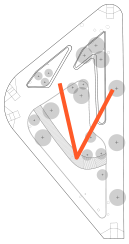
A Frame for the City

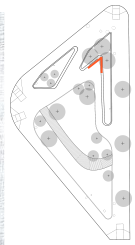


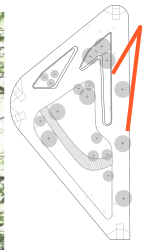


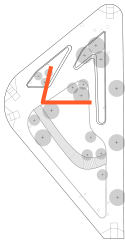






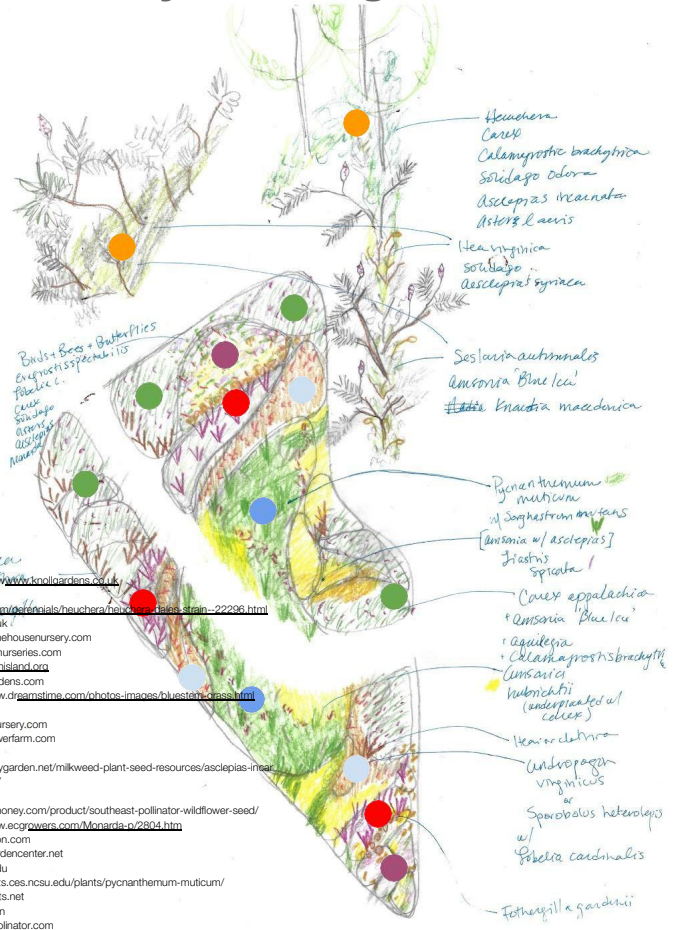






Planting & Materials Palette

Understory Planting Palette

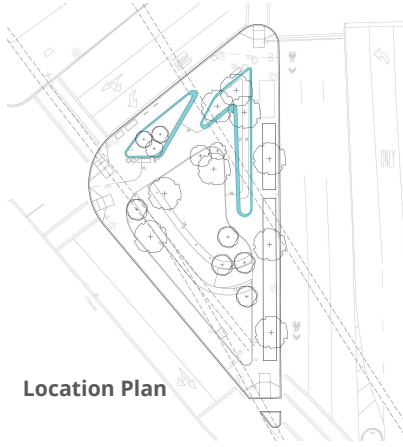


- (a.) Source: www.knollgardens.co.uk
- (b.) Source: <https://www.burges.com/regions/netherlands/rijnsburg-strain-22293.html>
- (c.) Source: www.crocus.co.uk/
- (d.) Source: <https://stonehousenursery.com>
- (e.) Source: northcreeknurseries.com
- (f.) Source: www.kiawahisland.com
- (g.) Source: sunlightgardens.com
- (h.) Source: <https://www.dreamstime.com/photos-images/blue-stachys-crassifolia>
- (i.) Source: garden.org
- (j.) Source: newmoonnursery.com
- (k.) Source: heritageflowerfarm.com
- (l.) Source: monarchbutterflygarden.net/milkweed-plant-seed-resources/asclepias-incarnata-swamp-milkweed/
- (m.) Source: mountainsweethoney.com/product/southeast-pollinator-wildflower-seed/
- (n.) Source: www.ecgrows.com/Monarda_n/2604.htm
- (o.) Source: [amycampion.com](https://www.amycampion.com)
- (p.) Source: buss@gardencentral.net
- (q.) Source: bygl.ou.edu
- (r.) Source: plants.ces.ncsu.edu/plants/pycnanthenum-multicaule/
- (s.) Source: specialplants.net
- (t.) Source: [Meg Baldwin](https://www.megbaldwin.com)
- (u.) Source: northeastpollinator.com
- (v.) Source: mailordernatives.com
- (w.) Source: hoffmannnursery.com/
- (x.) Source: thompson-morgan.com
- (y.) Source: northcreeknurseries.com
- (z.) Source: hoffmannnursery.com/



- BOOMERANG
- BIRDS BEES BUTTERFLIES
- SHRUB BREAK
- THE CLEARING
- SWOOP BREAK
- SHADE NOOKS

Big Dig Granite



Location Plan

Considerations:

- Color
- Program: curbs, seating, walls
- Assembly & Details
- Cost



Source: ASK +



Source: ASK +



Source: ASK +

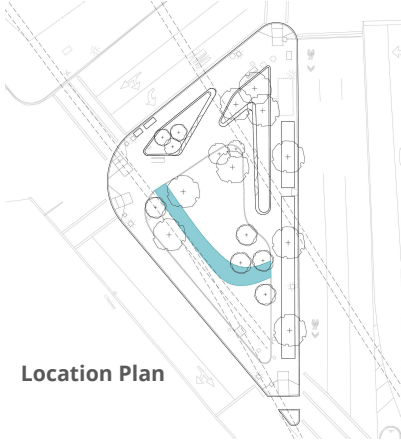


Source: ASK +



Source: ASK +

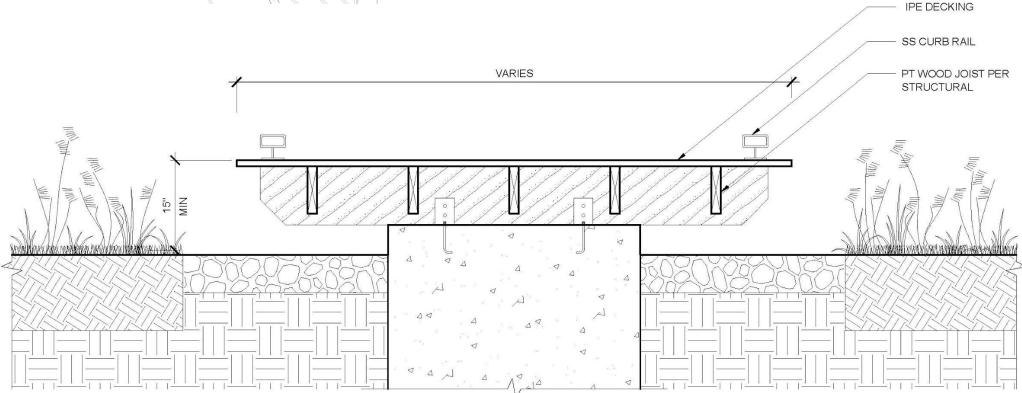
Boardwalk Materials



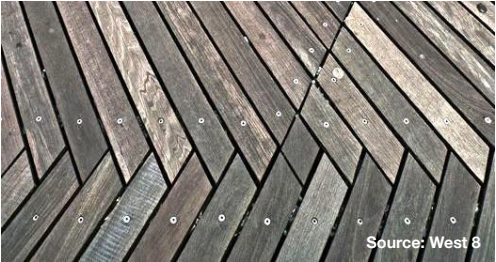
Location Plan

Considerations:

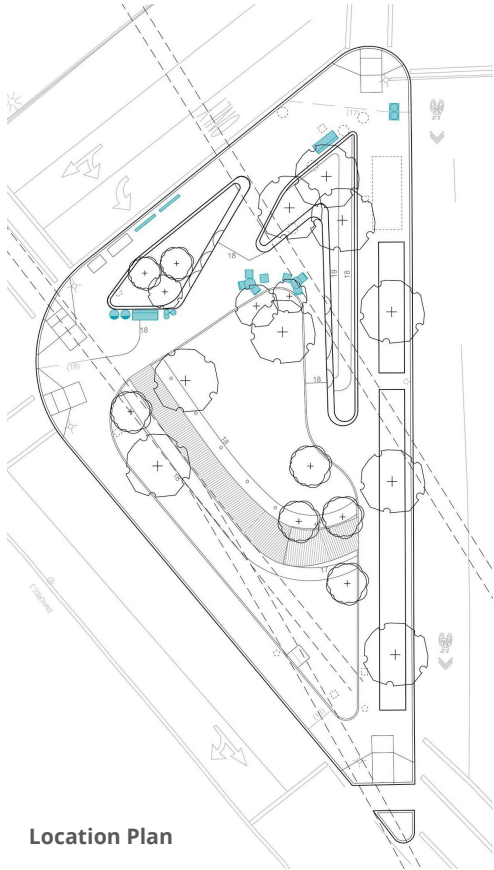
- Color
- Program: curbs, seating, walls
- Assembly & Details
- Cost



Detail



Furnishings



Location Plan



ADA Bubbler with Dog Fountain
Manufacturer: Elkay



Greenway Bike Rack
Manufacturer: Dero



Greenway Tables & Chairs
Manufacturer: Landscape Forms



Greenway Wood Bench
Manufacturer: Victor Stanley



Greenway Trash/Recycle Bin
Manufacturer: Landscape Forms



Greenway Power Bollard
Manufacturer: PEDOC



**boston planning &
development agency**

Welcome, Virtual Meeting Overview

Project Schedule Update

Parcel 2 Park Design Overview

Construction Timeline and Process

Share Your Feedback

Construction Contractor

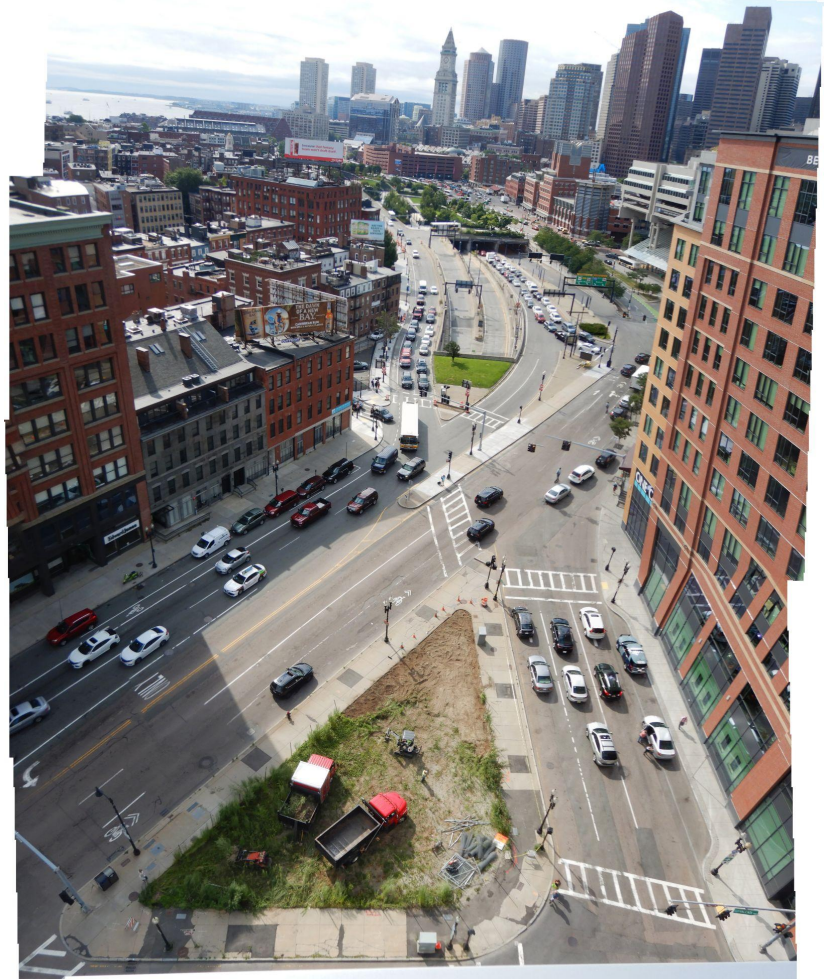
- NELM Corp. Construction
- Based in Rockland, MA
- 40 years experience in parks and playground construction
- Experienced in commercial, residential, educational and institutional work

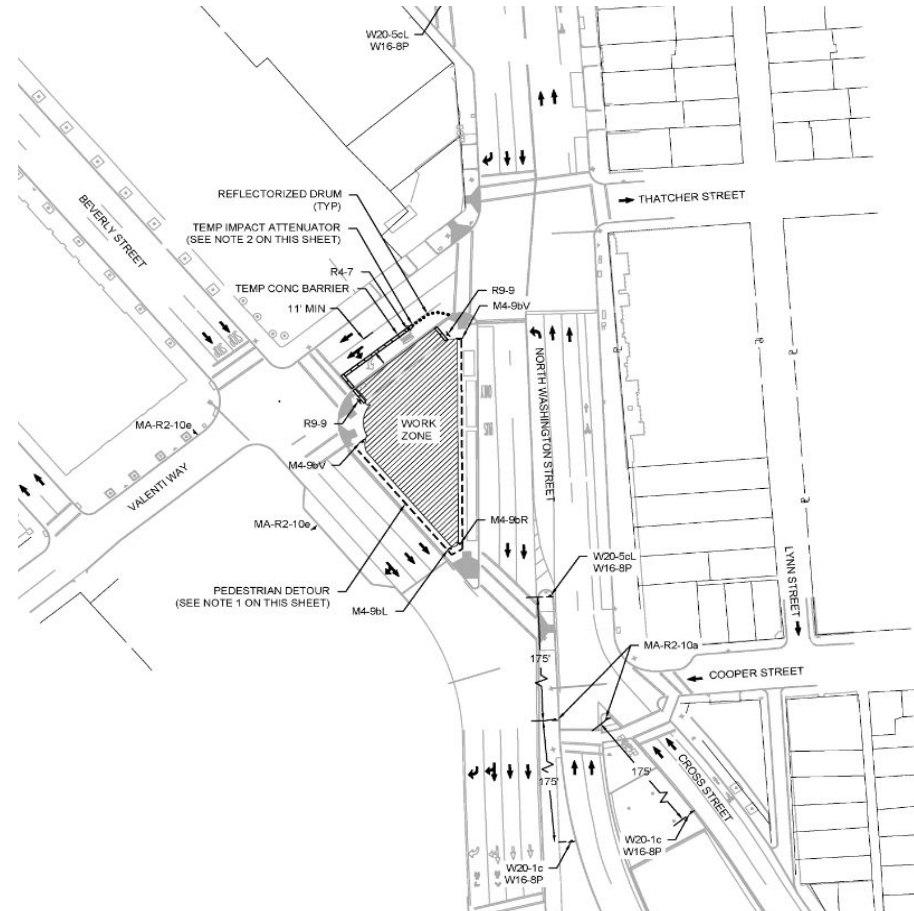


Staging & Timing

1. Irrigation Cabinet Installation
 2. Sidewalk Installation
-

1. Temporary Construction Fence
2. Excavation (1 large excavator)
3. Footings, Drainage
4. Stockpile Topsoil
5. Build Boardwalk
6. Granite
7. Concrete Paving
8. Metal Finishes
9. Rough Grading
10. Planting (September)
11. Clean Up/Park Opening





Pedestrian Detour

Valenti Way

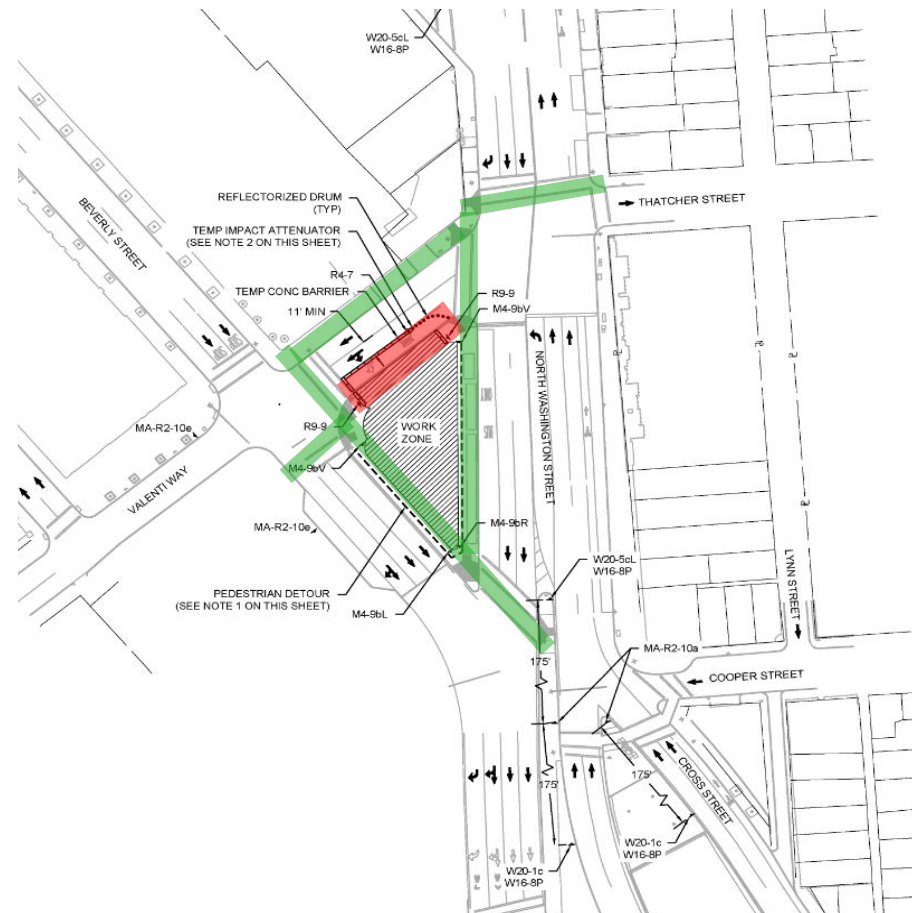
- Sidewalk **Closed**
- One Traffic Lane **Closed**

Beverly Street

- Sidewalk **Open**
- All Traffic Lanes **Open**

North Washington Street

- Sidewalk **Open**
- All Traffic Lanes **Open**





**boston planning &
development agency**

Welcome, Virtual Meeting Overview

Project Schedule Update

Parcel 2 Park Design Overview

Construction Timeline and Process

Share Your Feedback

How to Stay Involved

Questions and Comments

Rebecca McKevez

617-603-7721

rmckevez@rosekennedygreenway.org

Follow Along

<http://bit.ly/greenwayp2>