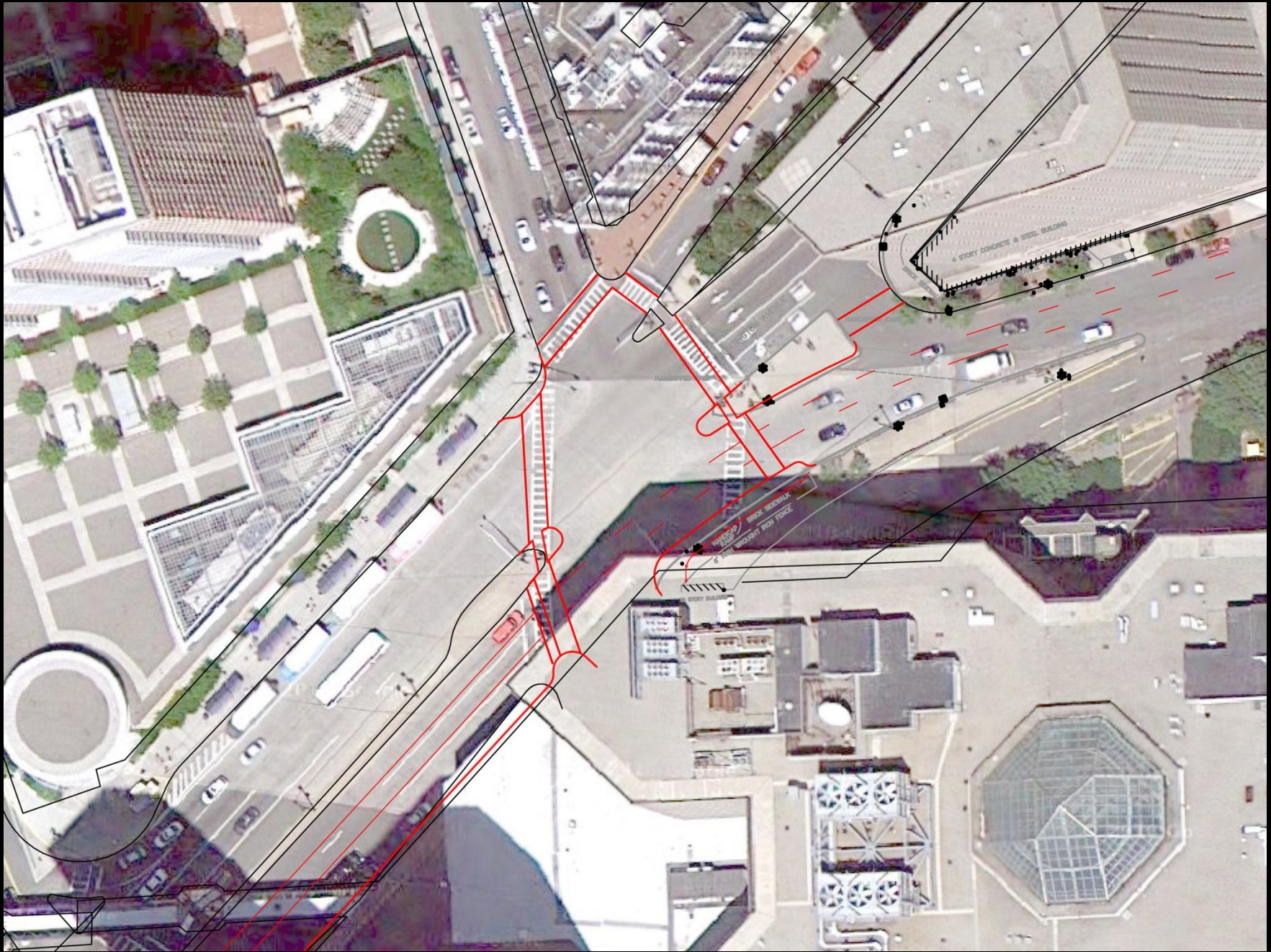


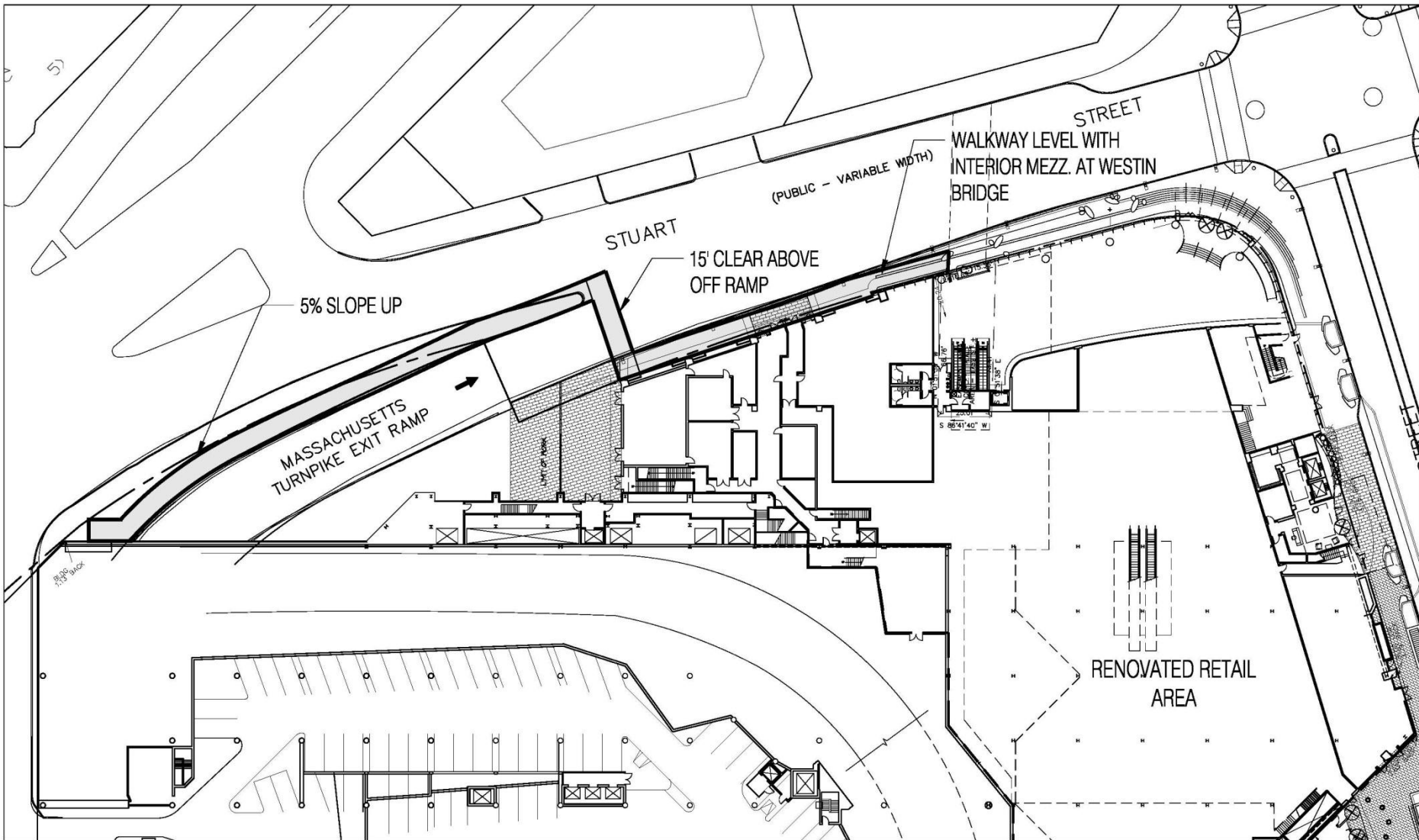
Copley Place Retail Expansion & Residential Project

**Huntington / Exeter Intersection
Pedestrian Crossing Studies presented at
9/28/11 CAC Meeting**

DRAFT FOR DISCUSSION PURPOSES ONLY



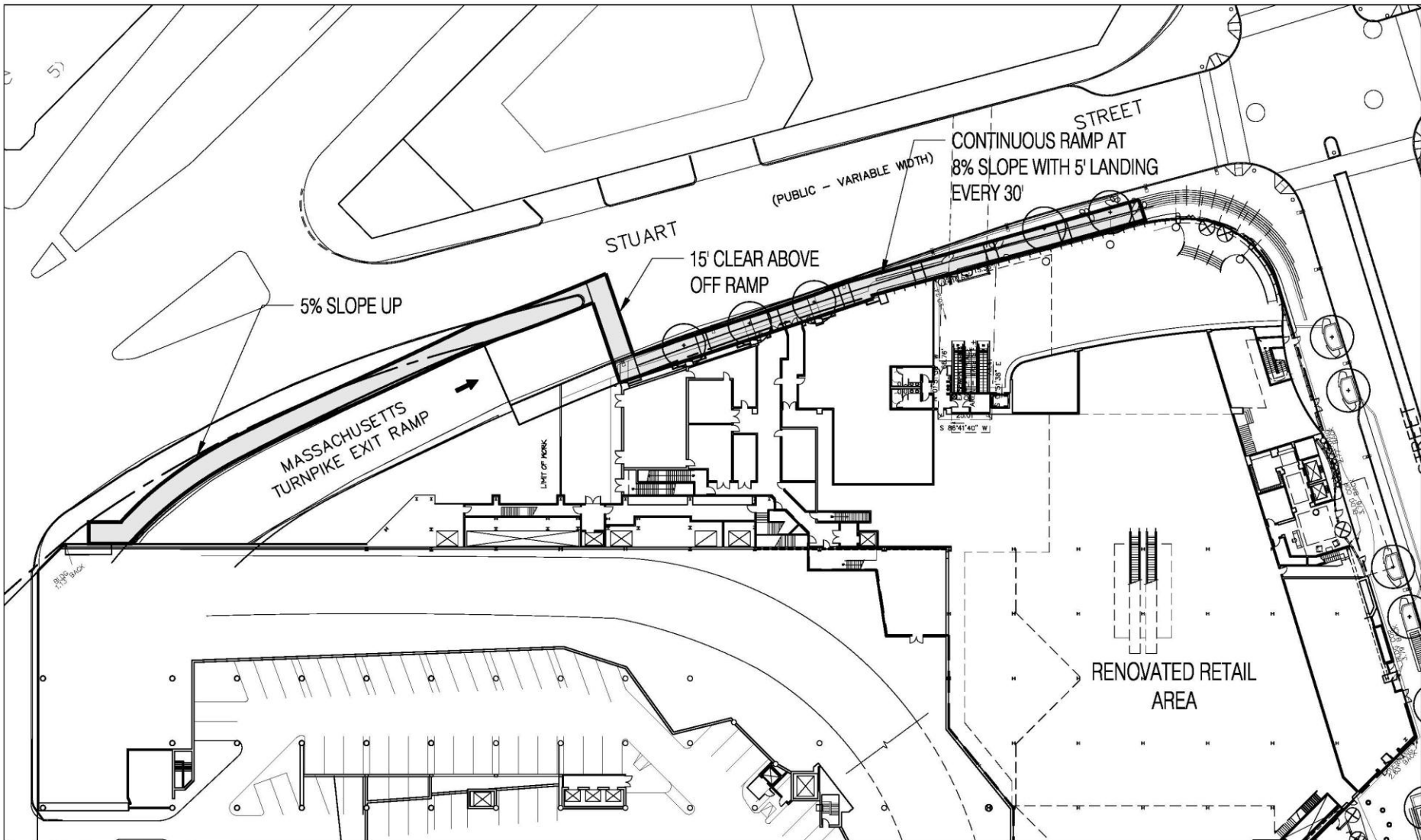
PROPOSED IMPROVEMENTS TO THE HUNTINGTON & EXETER INTERSECTION



COPLEY PLACE
 RETAIL EXPANSION AND RESIDENTIAL ADDITION

SIMON | **ELKUS | MANFREDI** ARCHITECTS | MARCH 17, 2011

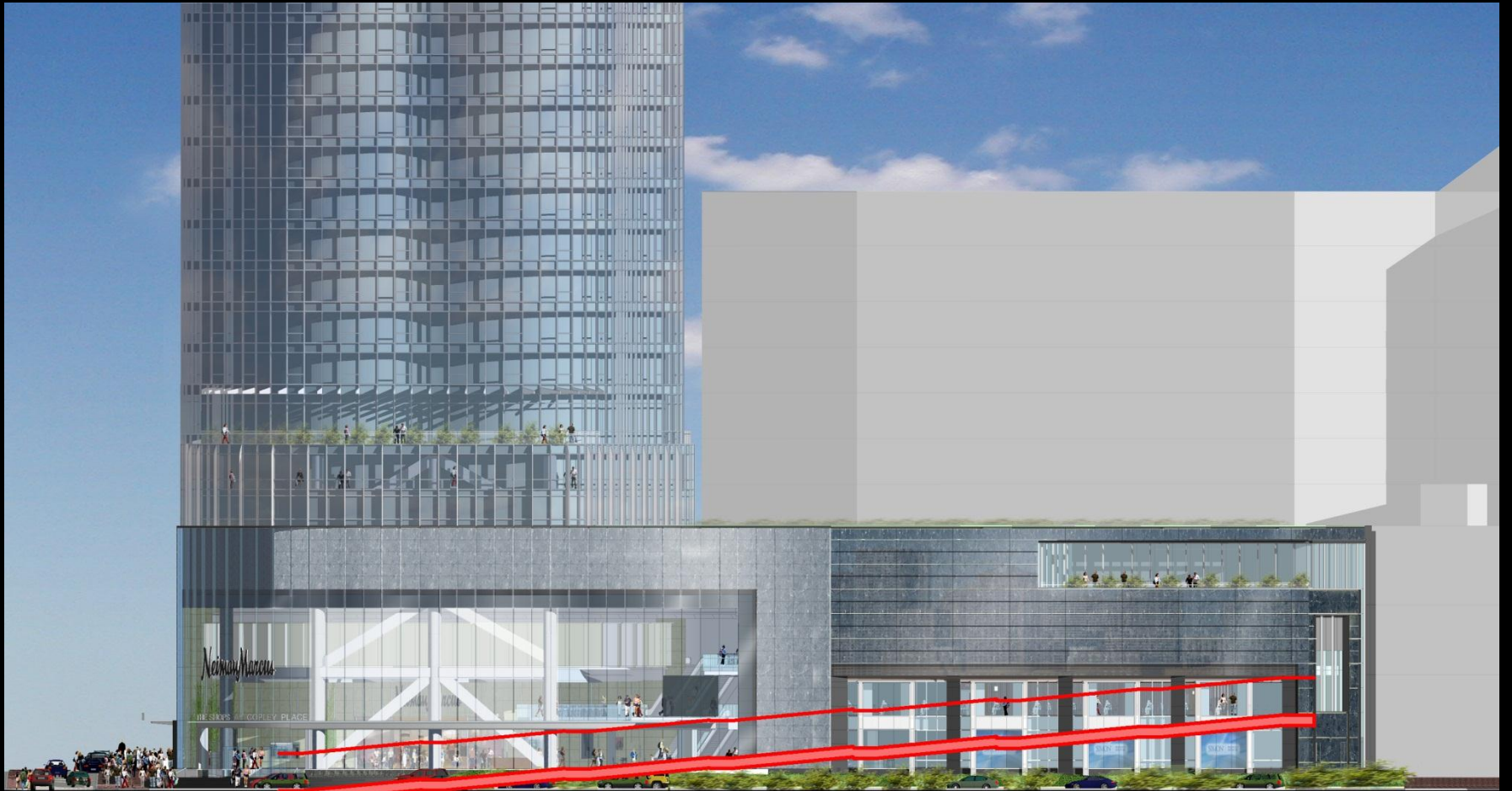




COPLEY PLACE
 RETAIL EXPANSION AND RESIDENTIAL ADDITION

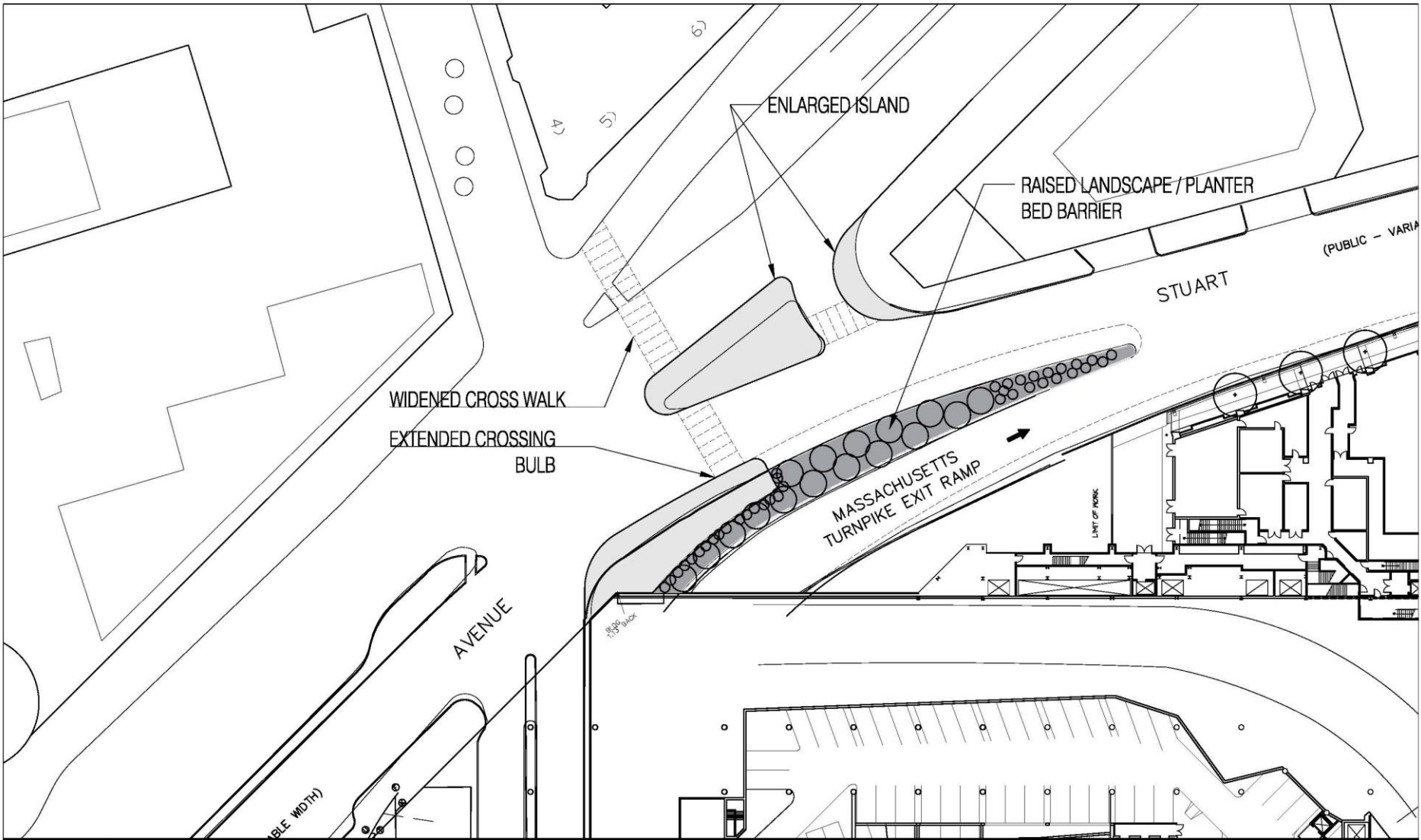
SIMON | **ELKUS | MANFREDI** ARCHITECTS | MARCH 17, 2011

CURRENT



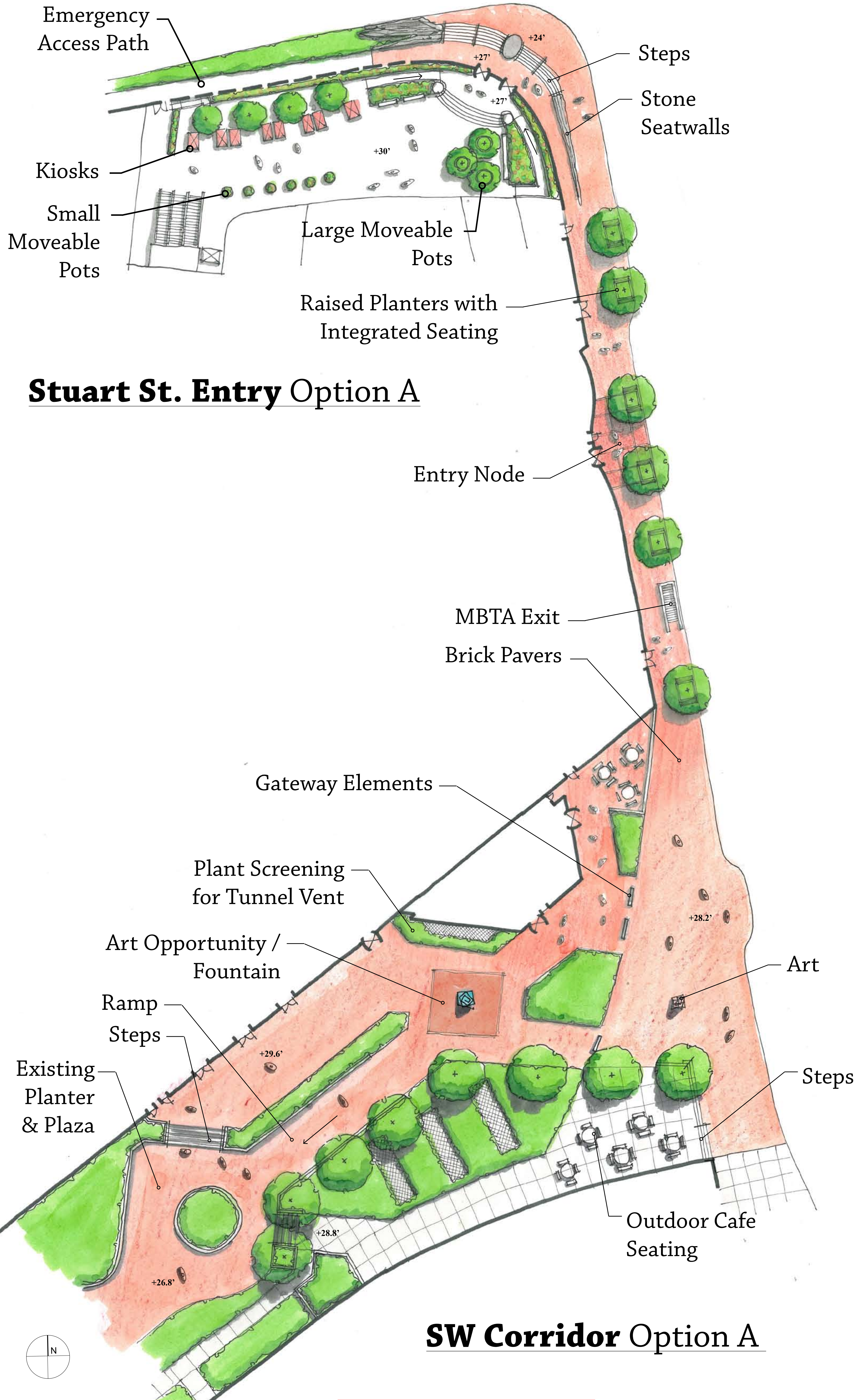
STUART STREET





COPLEY PLACE
 RETAIL EXPANSION AND RESIDENTIAL ADDITION

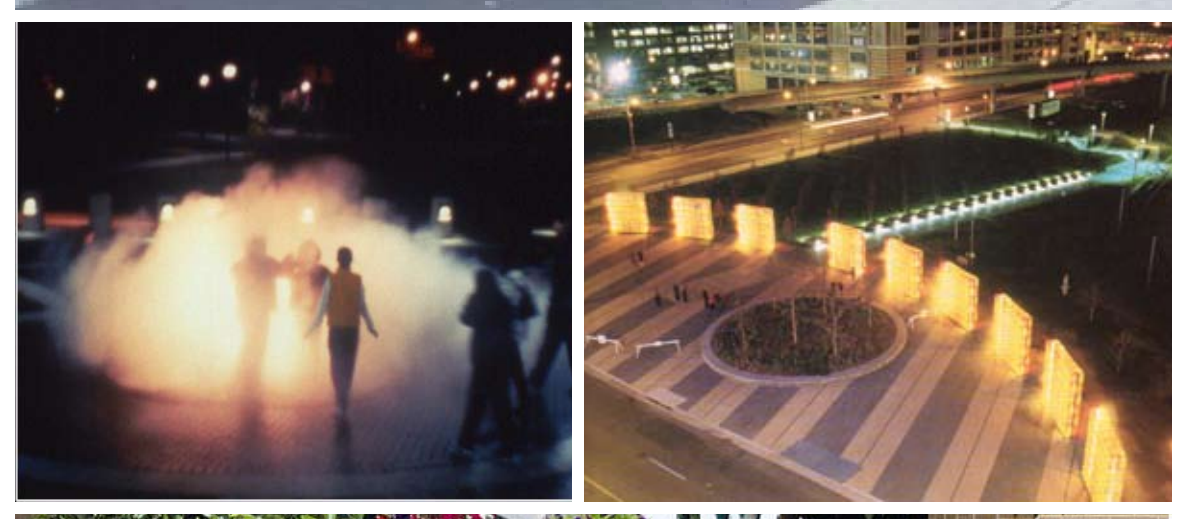
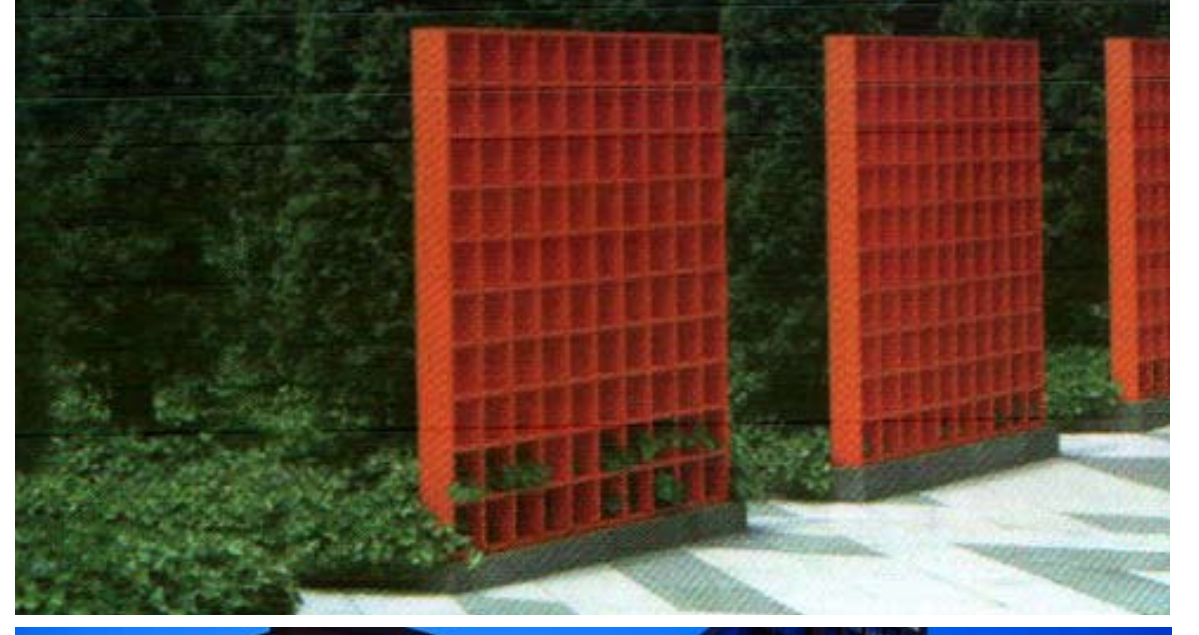
SIMON | **ELKUS | MANFREDI** ARCHITECTS | MARCH 17, 2011

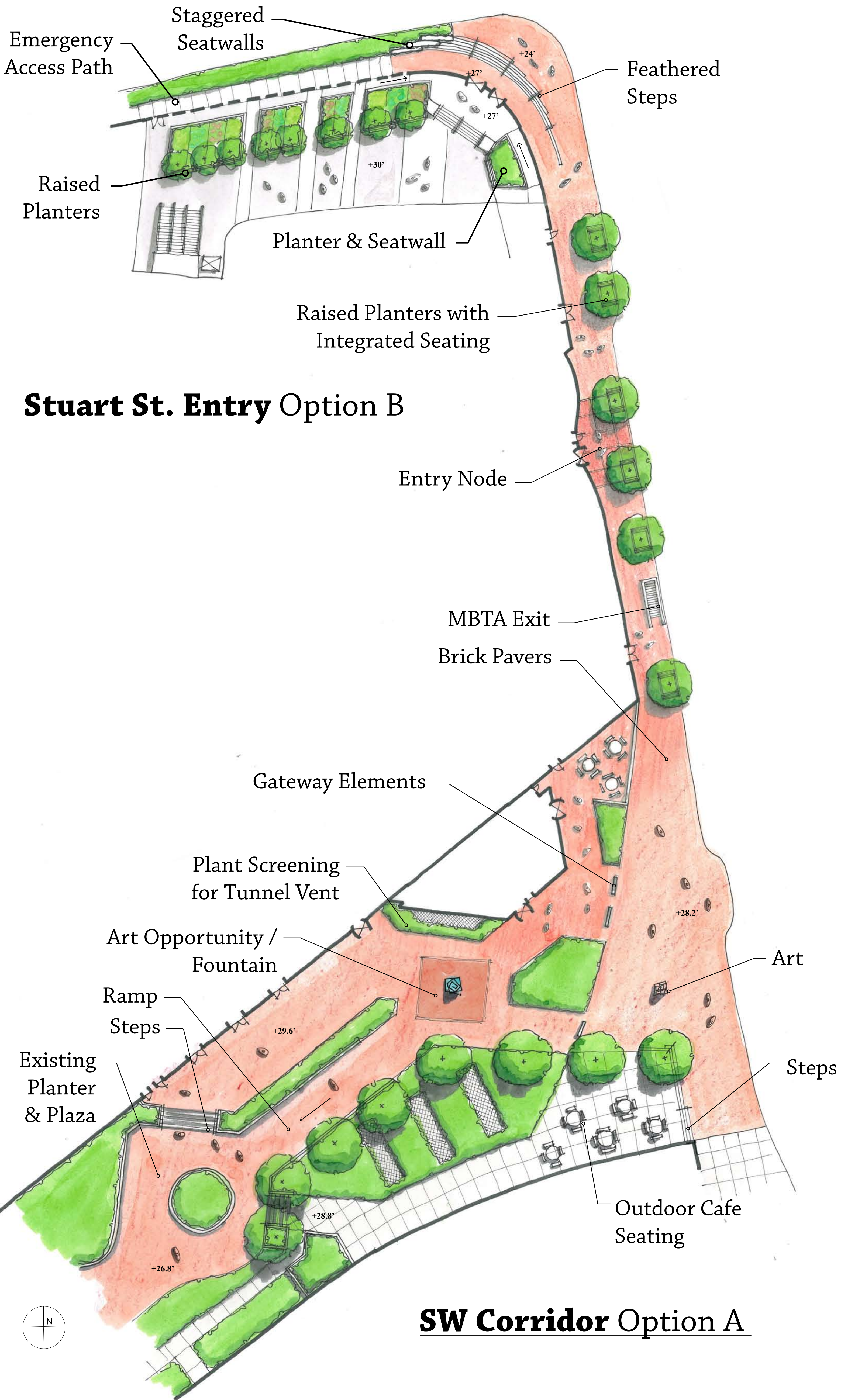


Stuart St. Entry Option A

SW Corridor Option A

DRAFT OPTIONS FOR DISCUSSION - CAC Meeting 9/28/11





Stuart St. Entry Option B

SW Corridor Option A

DRAFT OPTIONS FOR DISCUSSION - CAC Meeting 9/28/11



