

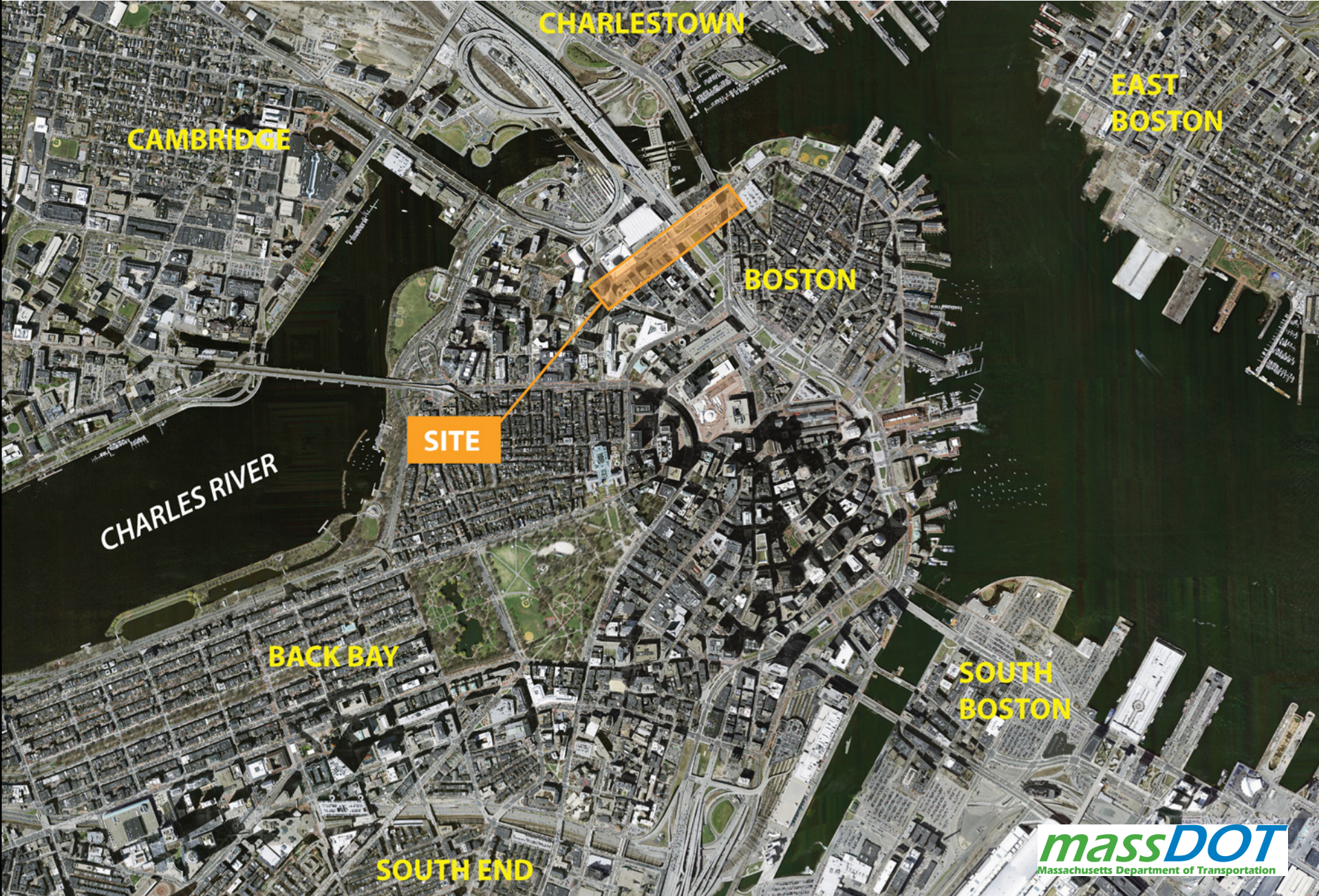
Causeway Street Reconstruction

Design Public Hearing

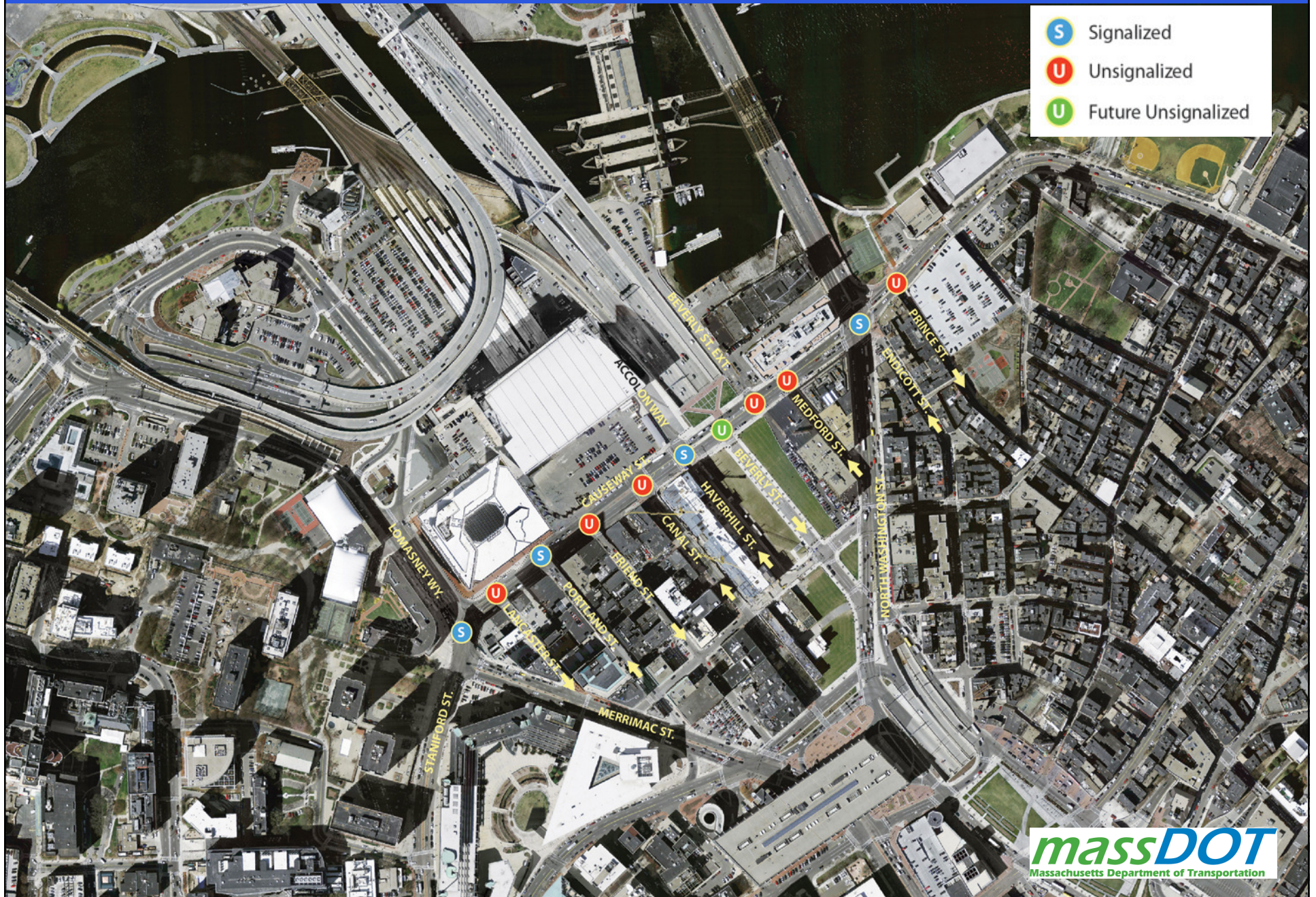
August 8, 2012



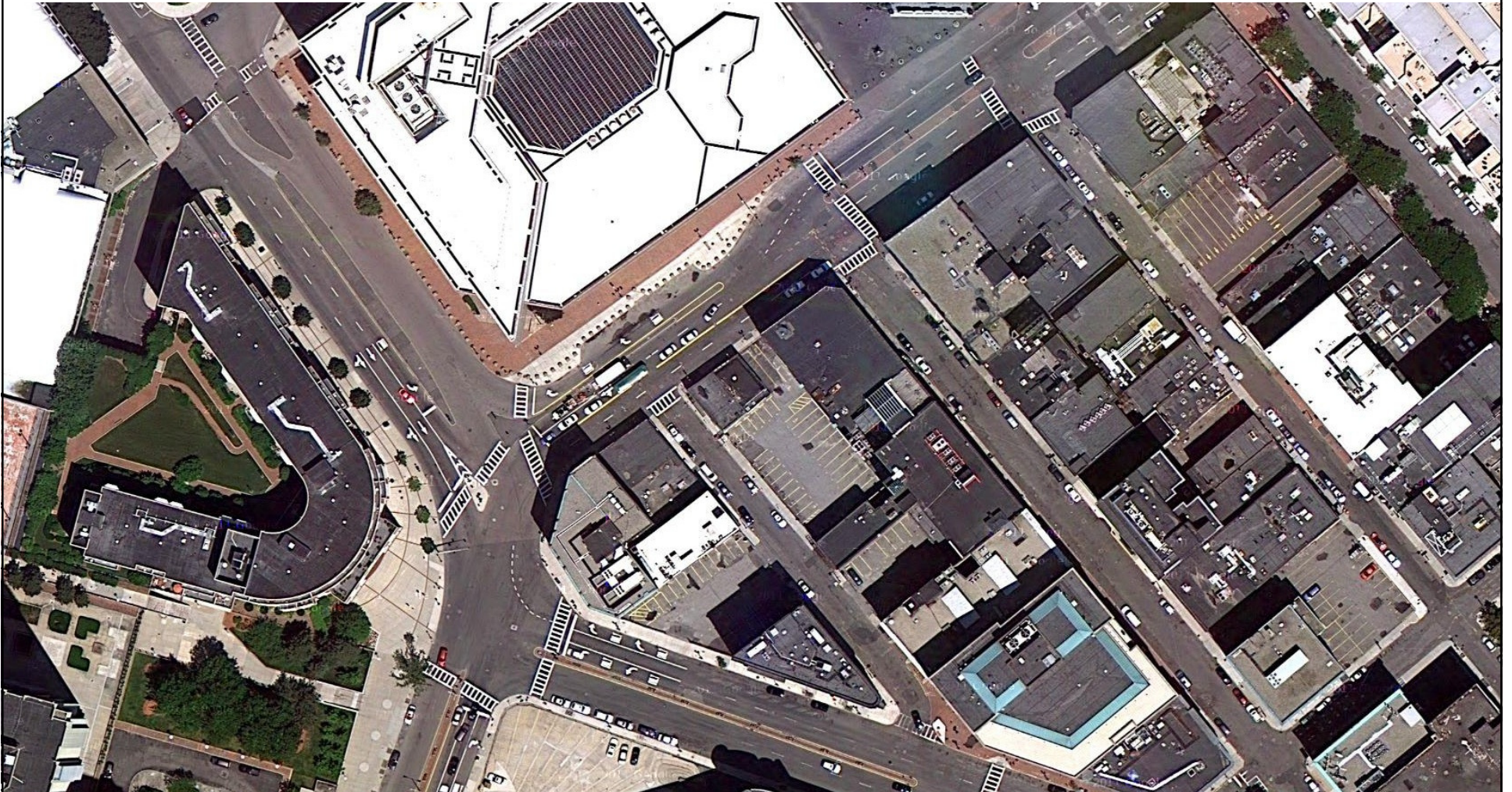
Locus Map



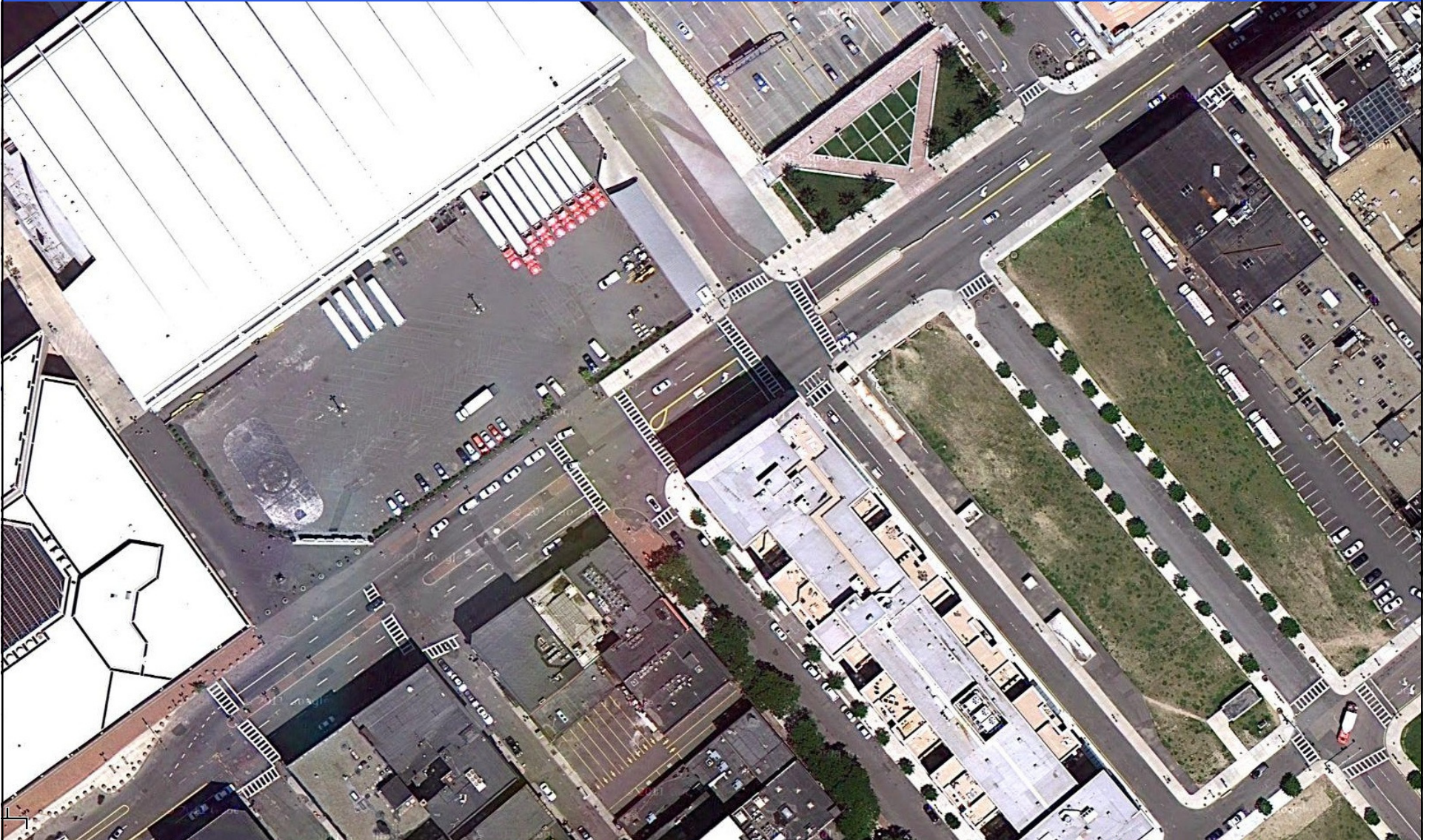
Study Area Intersections



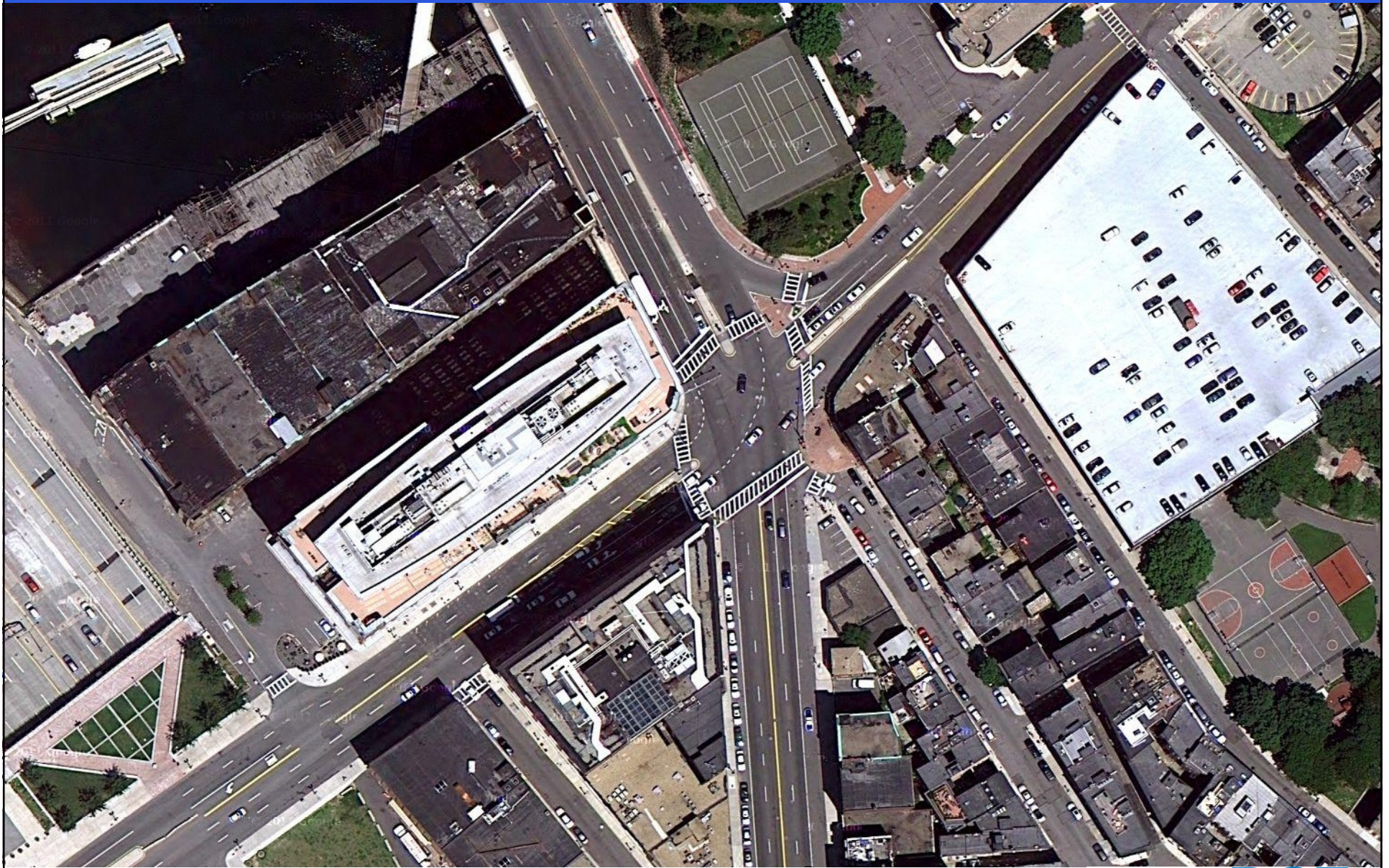
Existing Conditions – Causeway Street – Lowell Sq.



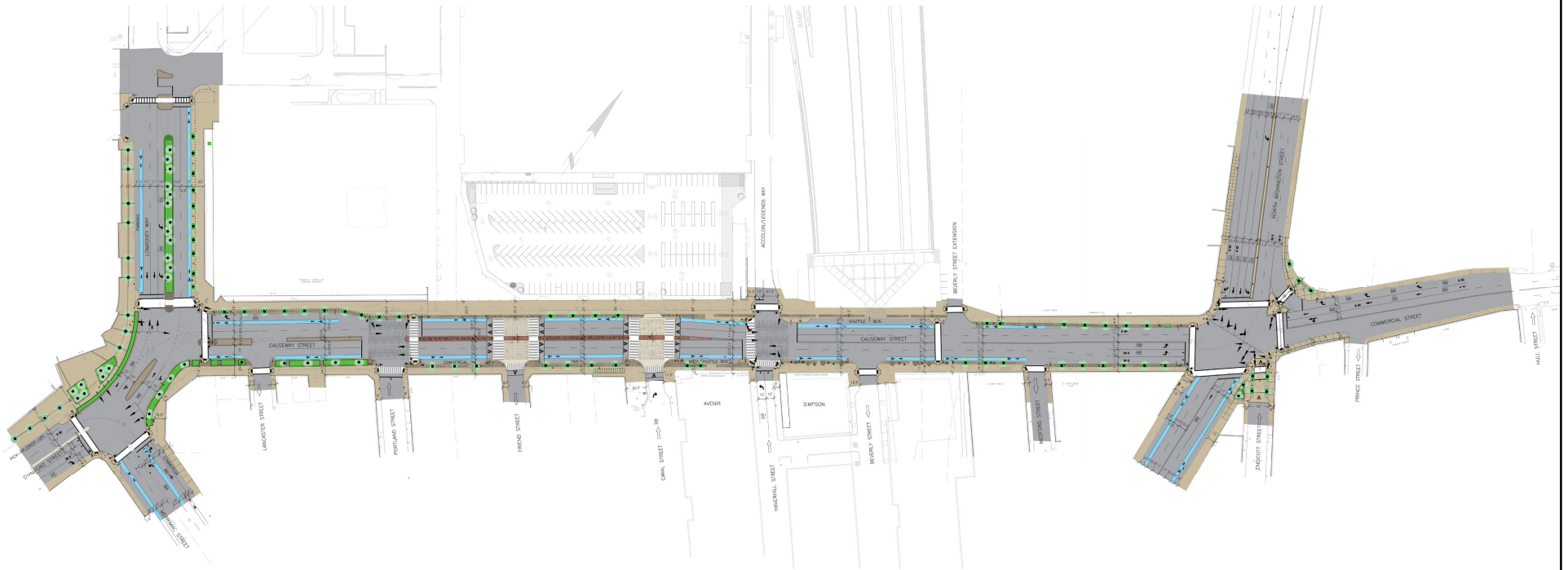
Existing Conditions - Causeway Street – Core Area



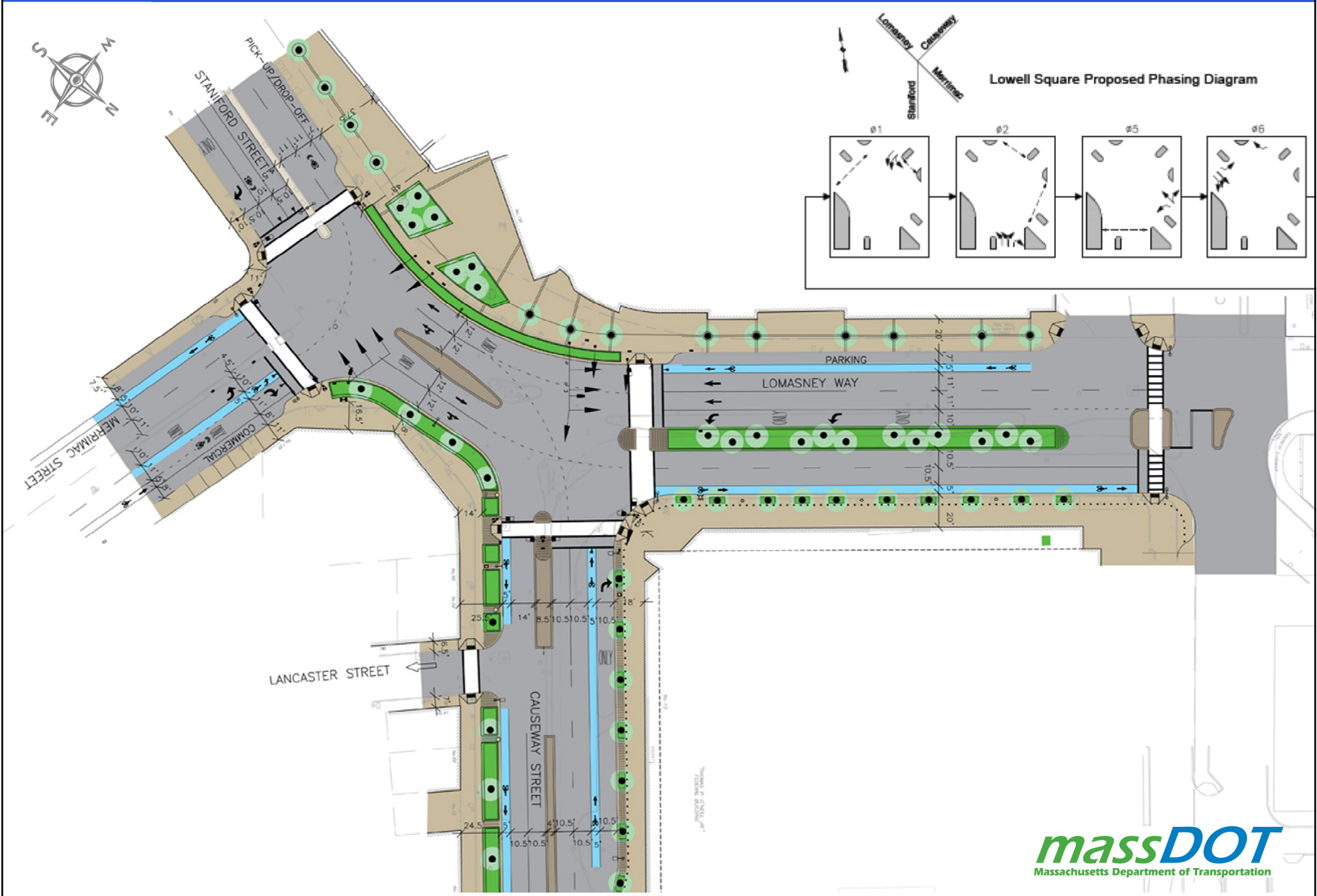
Existing Conditions – Causeway Street – Keany Sq.



Proposed Conditions – Causeway Street



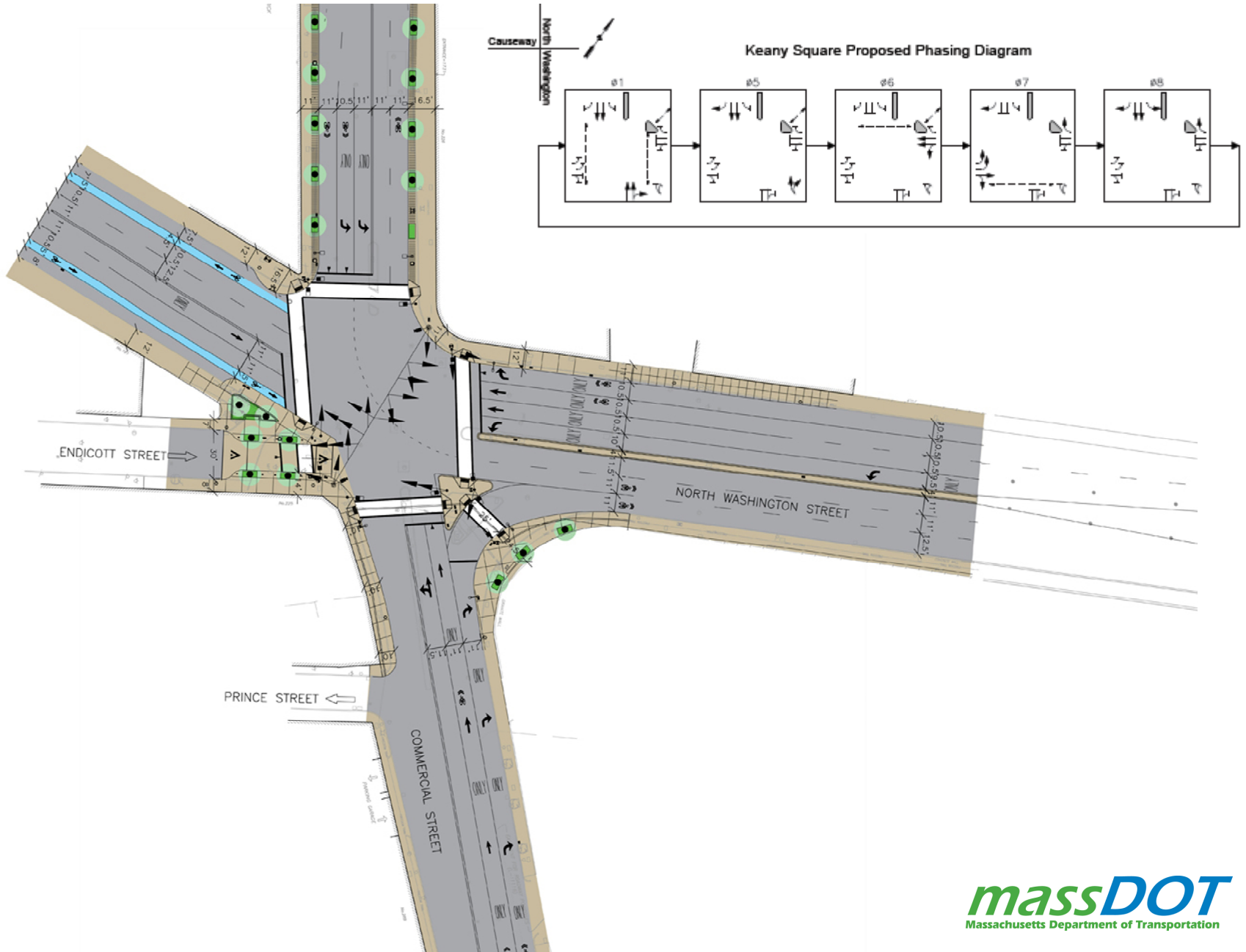
Proposed Conditions – Causeway Street – Lowell Sq.



Proposed Raised Intersection – Friend St. at Causeway St.



Proposed Conditions – Causeway Street





NASHUA STREET

BOSTON REDEVELOPMENT
AUTHORITY LAYOUT

MARTHA ROAD

LOMASNEY WAY

CITY OF BOSTON LAYOUT

LIMIT OF WORK
STA 200+10
N 2,958,425.08
E 773,930.42

NOW OR FORMERLY
CHARLES RIVER PARK, INC.
WARD 3, PARCEL 470

NOW OR FORMERLY
BOSTON REDEVELOPMENT
AUTHORITY
WARD 3, PARCEL 1922

CONT. ON
SHEET 18

NOW OR FORMERLY
WEST



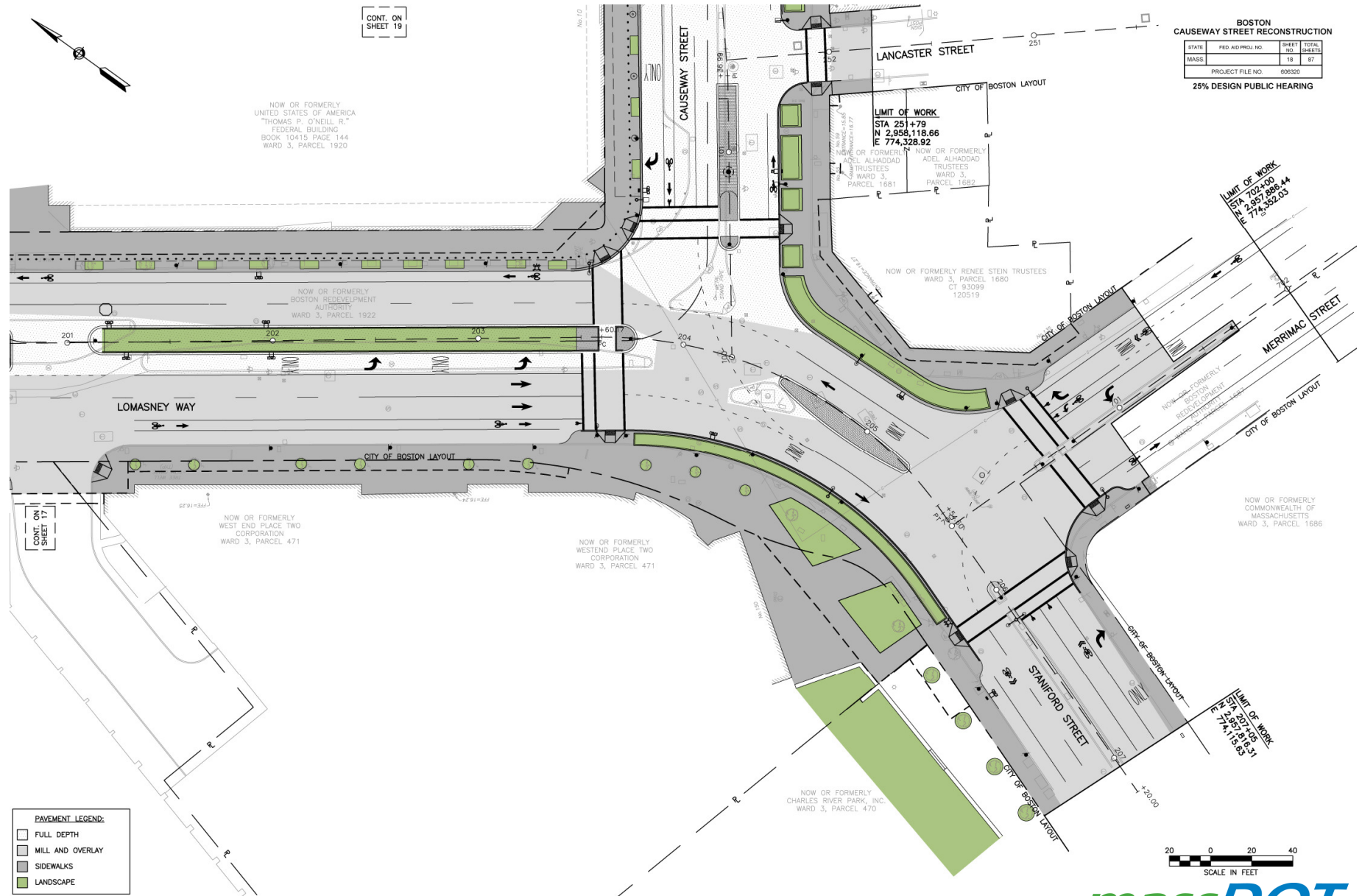
CONT. ON SHEET 19

NOW OR FORMERLY UNITED STATES OF AMERICA "THOMAS P. O'NEILL, R." FEDERAL BUILDING BOOK 10415 PAGE 144 WARD 3, PARCEL 1920

BOSTON CAUSEWAY STREET RECONSTRUCTION

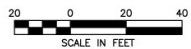
| STATE | FED. AID PROJ. NO. | SHEET NO. | TOTAL SHEETS |
|-------|--------------------|-----------|--------------|
| MASS | | 18 | 87 |

PROJECT FILE NO. 606320
25% DESIGN PUBLIC HEARING

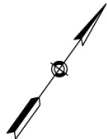


PAVEMENT LEGEND:

| | |
|----------|------------------|
| [Symbol] | FULL DEPTH |
| [Symbol] | MILL AND OVERLAY |
| [Symbol] | SIDEWALKS |
| [Symbol] | LANDSCAPE |



massDOT
Massachusetts Department of Transportation



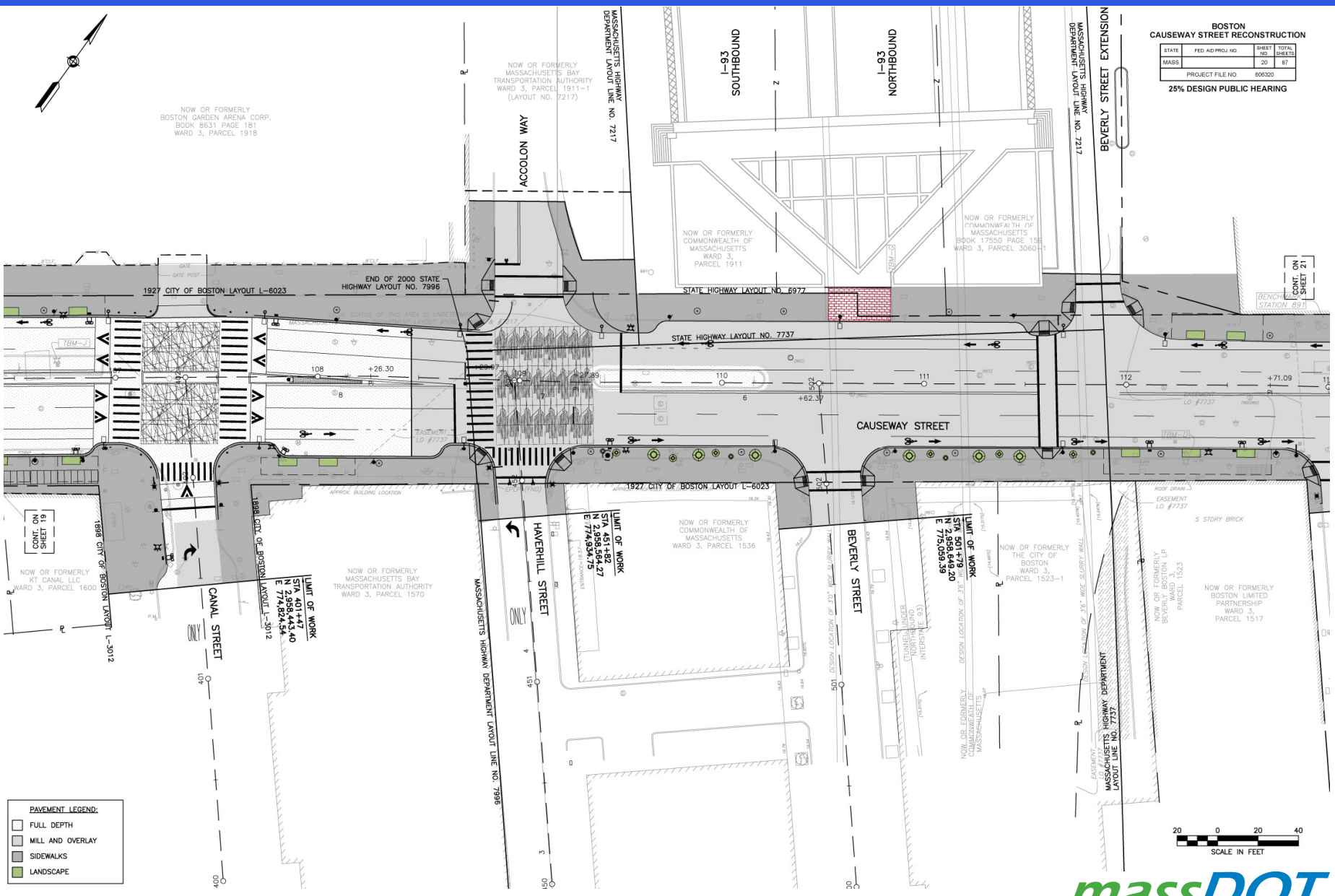
NOW OR FORMERLY
BOSTON GARDEN ARENA CORP.
BOOK 8631 PAGE 181
WARD 3, PARCEL 1918

**BOSTON
CAUSEWAY STREET RECONSTRUCTION**

| STATE | FED. AID PROJ. NO. | SHEET NO. | TOTAL SHEETS |
|-------|--------------------|-----------|--------------|
| MASS | | 20 | 87 |

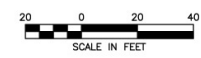
PROJECT FILE NO. 606320

25% DESIGN PUBLIC HEARING



PAVEMENT LEGEND:

| | |
|-----------|------------------|
| [Pattern] | FULL DEPTH |
| [Pattern] | MILL AND OVERLAY |
| [Pattern] | SIDEWALKS |
| [Pattern] | LANDSCAPE |



massDOT
Massachusetts Department of Transportation

CONT. ON
SHEET 21

CONT. ON
SHEET 19

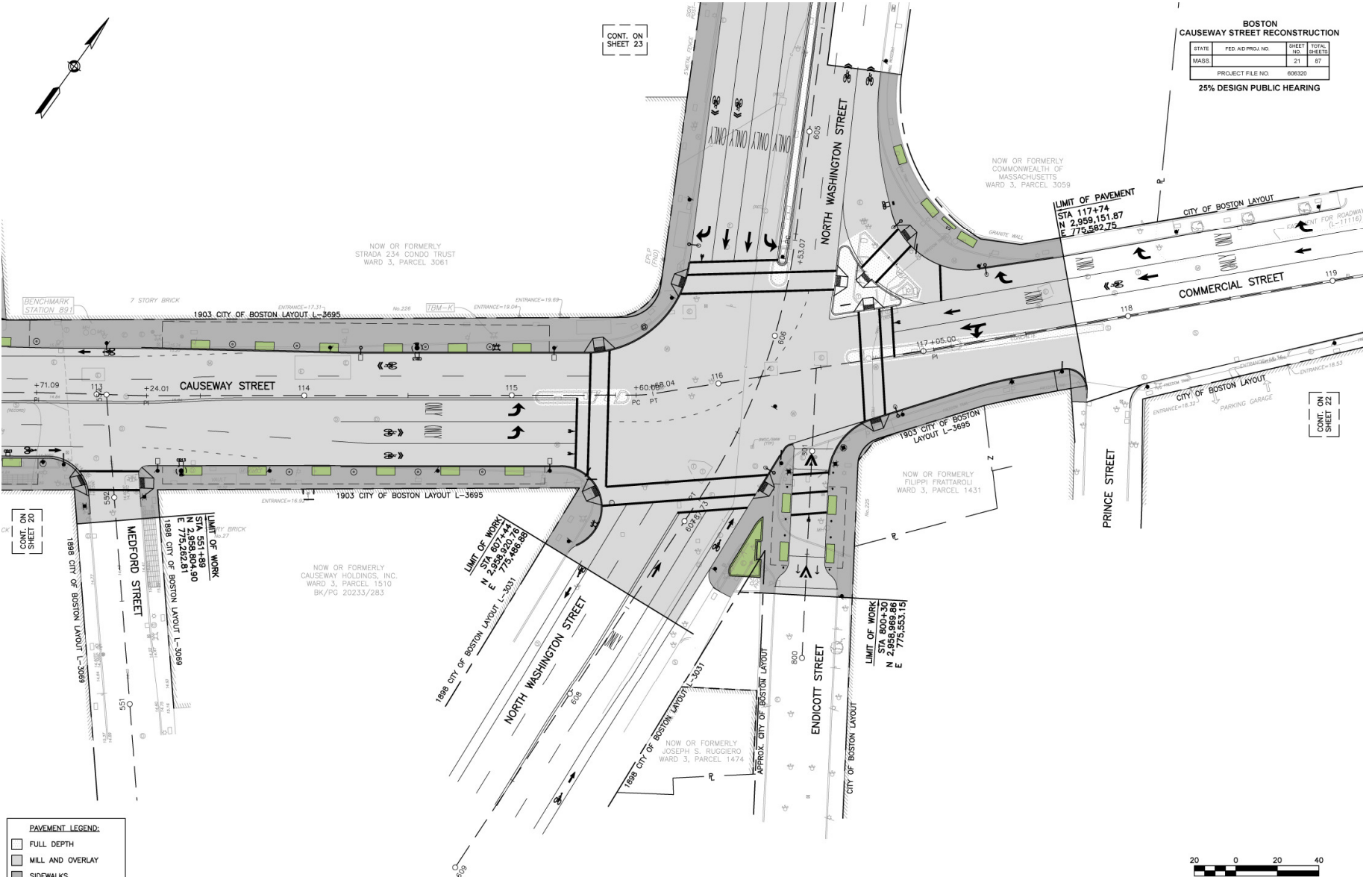
**BOSTON
CAUSEWAY STREET RECONSTRUCTION**

| | | | |
|-------------------------|--------------------|-----------|--------------|
| STATE | FED. AID PROJ. NO. | SHEET NO. | TOTAL SHEETS |
| MASS. | | 21 | 87 |
| PROJECT FILE NO. 606320 | | | |

25% DESIGN PUBLIC HEARING

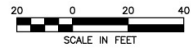
CONT. ON
SHEET 23

CONT. ON
SHEET 22



PAVEMENT LEGEND:

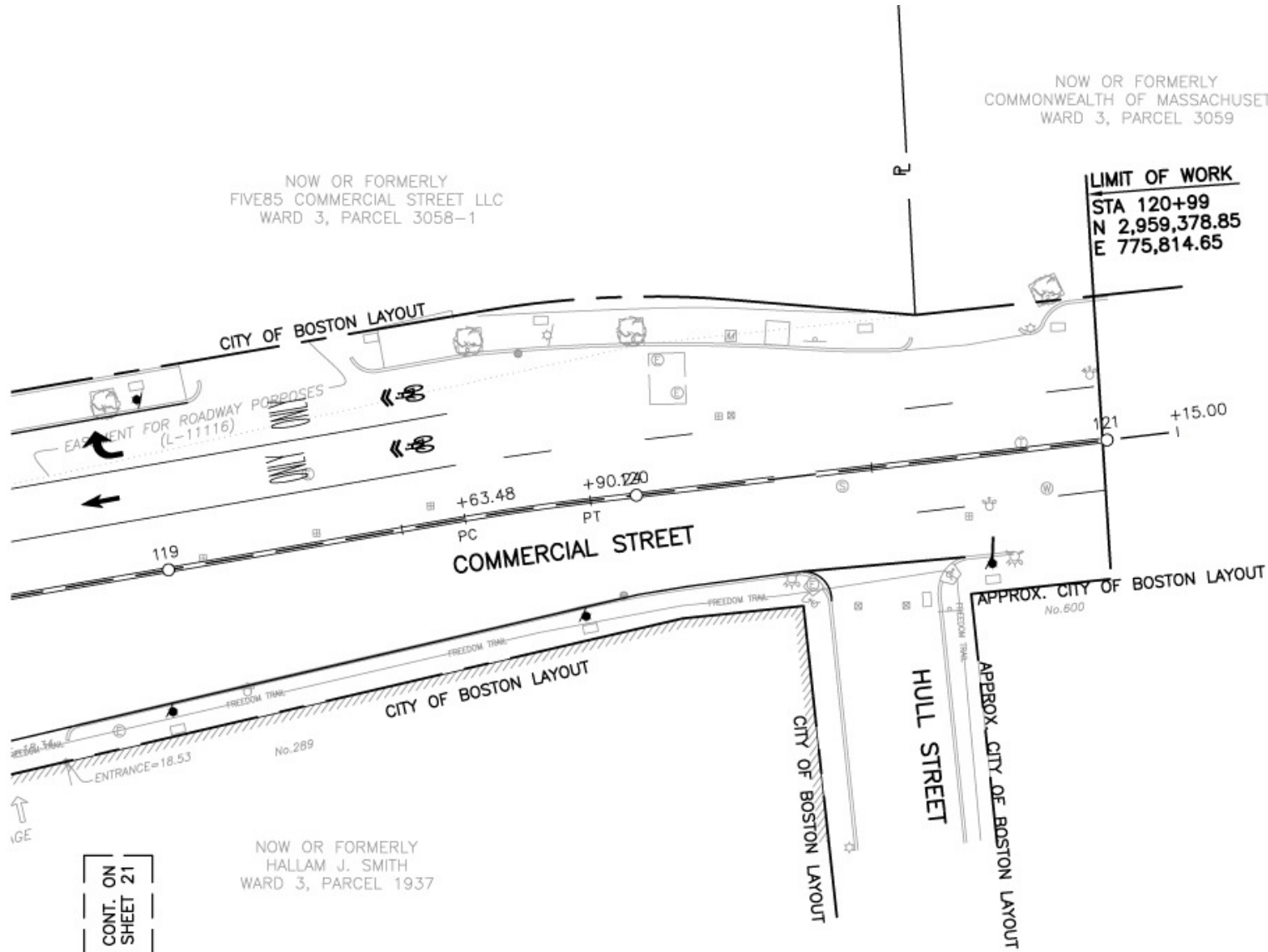
| | |
|-------------------|------------------|
| [White Box] | FULL DEPTH |
| [Light Gray Box] | MILL AND OVERLAY |
| [Medium Gray Box] | SIDEWALKS |
| [Dark Gray Box] | LANDSCAPE |



NOW OR FORMERLY
FIVE85 COMMERCIAL STREET LLC
WARD 3, PARCEL 3058-1

NOW OR FORMERLY
COMMONWEALTH OF MASSACHUSETTS
WARD 3, PARCEL 3059

LIMIT OF WORK
STA 120+99
N 2,959,378.85
E 775,814.65



CONT. ON
SHEET 21

NOW OR FORMERLY
HALLAM J. SMITH
WARD 3, PARCEL 1937

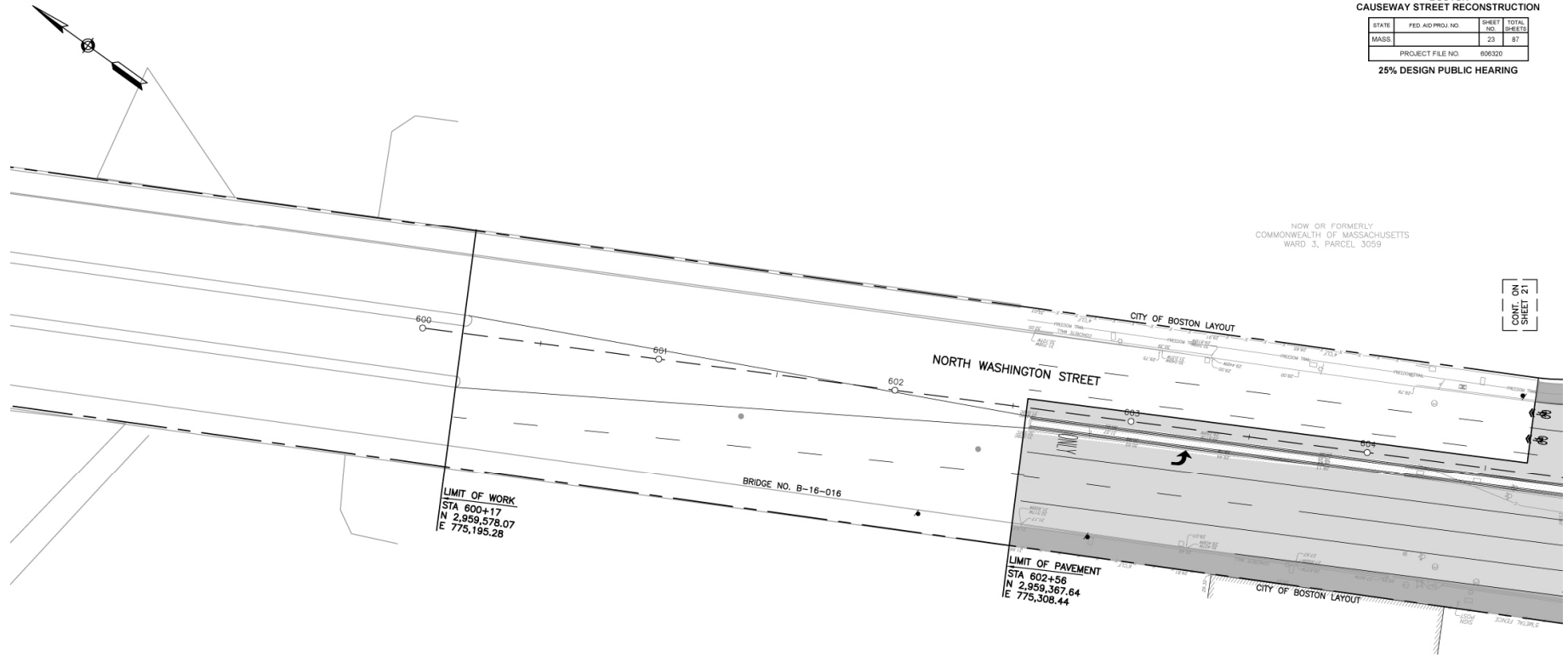
BOSTON
CAUSEWAY STREET RECONSTRUCTION

| STATE | FED. AID PROJ. NO. | SHEET NO. | TOTAL SHEETS |
|------------------|--------------------|-----------|--------------|
| MASS. | | 23 | 87 |
| PROJECT FILE NO. | | 606300 | |

25% DESIGN PUBLIC HEARING

NOW OR FORMERLY
COMMONWEALTH OF MASSACHUSETTS
WARD 3, PARCEL 3059

CONT. ON
SHEET 21



Causeway Street Reconstruction

Design Public Hearing

August 8, 2012



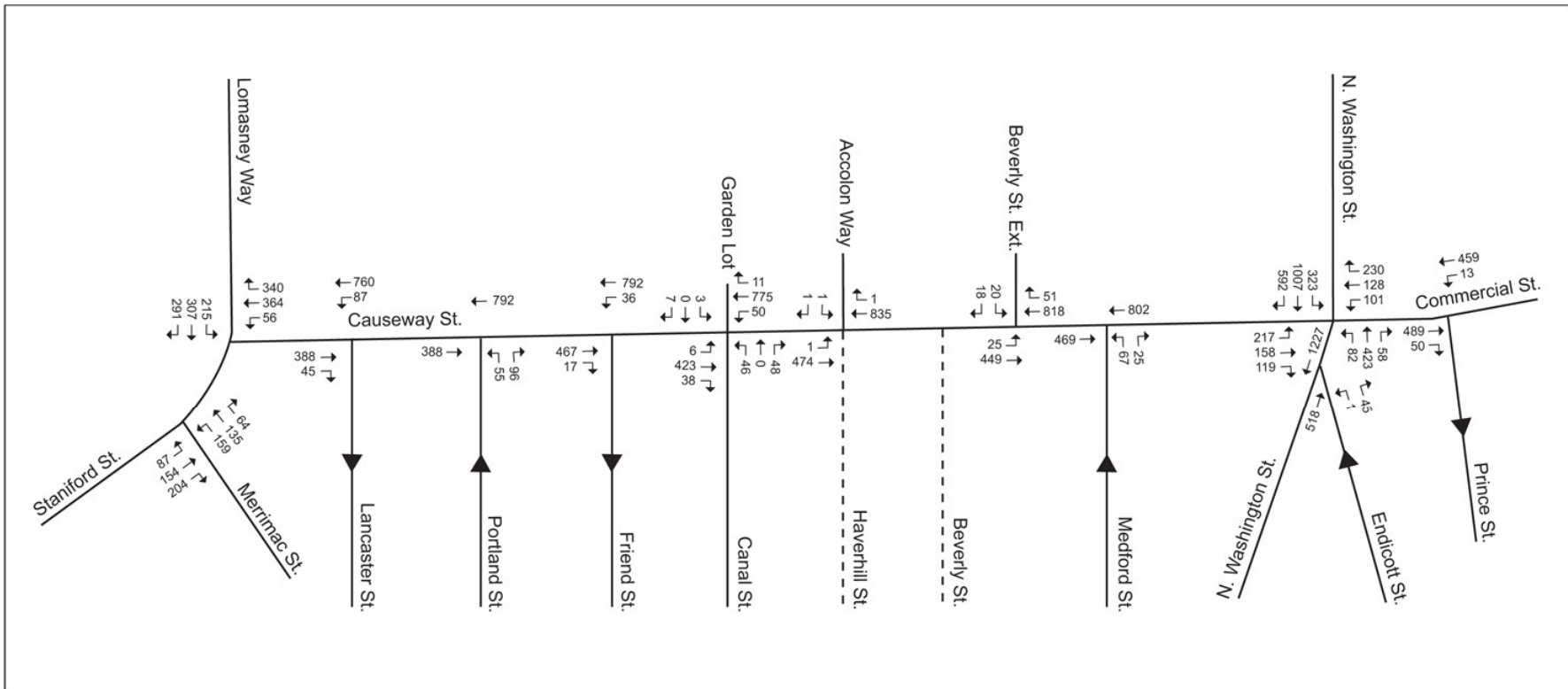
CAUSEWAY STREET RECONSTRUCTION PROJECT

Your input is solicited and appreciated.

**Please return your sheet, with comments, to a staff member at
the meeting, or mail to:**

**Thomas F. Broderick, P.E., Chief Engineer
MassDOT, Highway Division
10 Park Plaza, Boston, MA 02116-3973
Attn: Causeway Street Reconstruction Project
Project No. 606320**

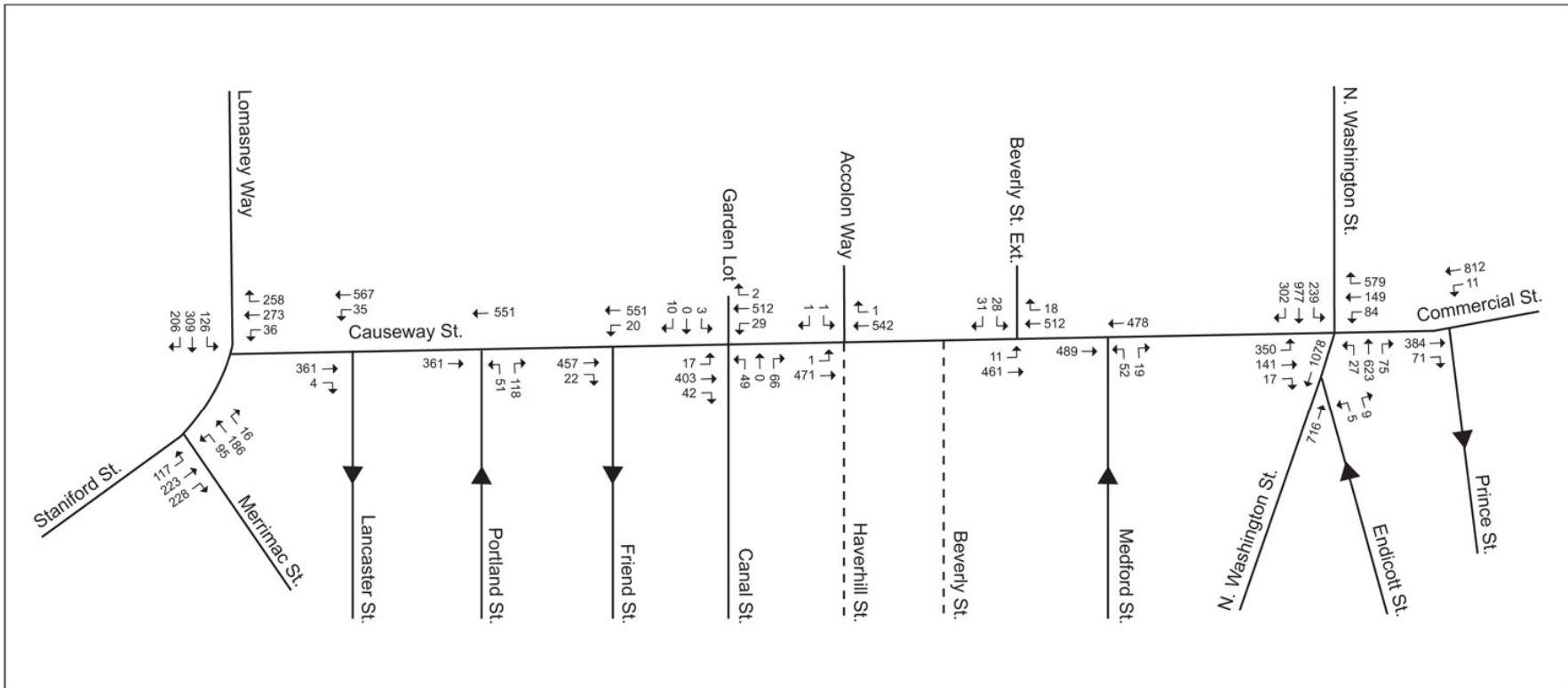
Existing Conditions (2007) Turning Movement Volumes, AM Peak Hour





Not to scale.

| | |
|--|-----------------------------|
| | Street Not Yet Open |
| | One-way Direction of Travel |

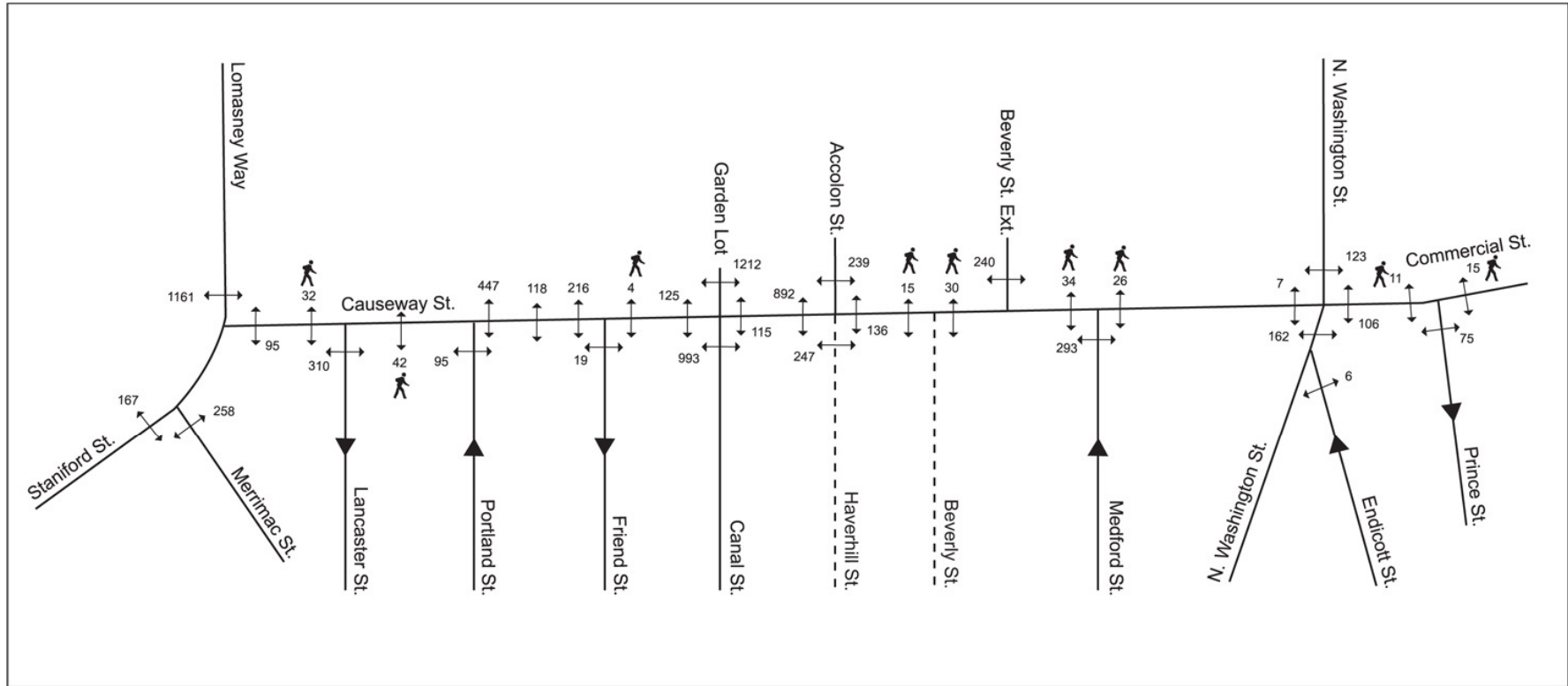
Existing Conditions (2007) Turning Movement Volumes, PM Peak Hour






Not to scale.

-  Street Not Yet Open
-  One-way Direction of Travel

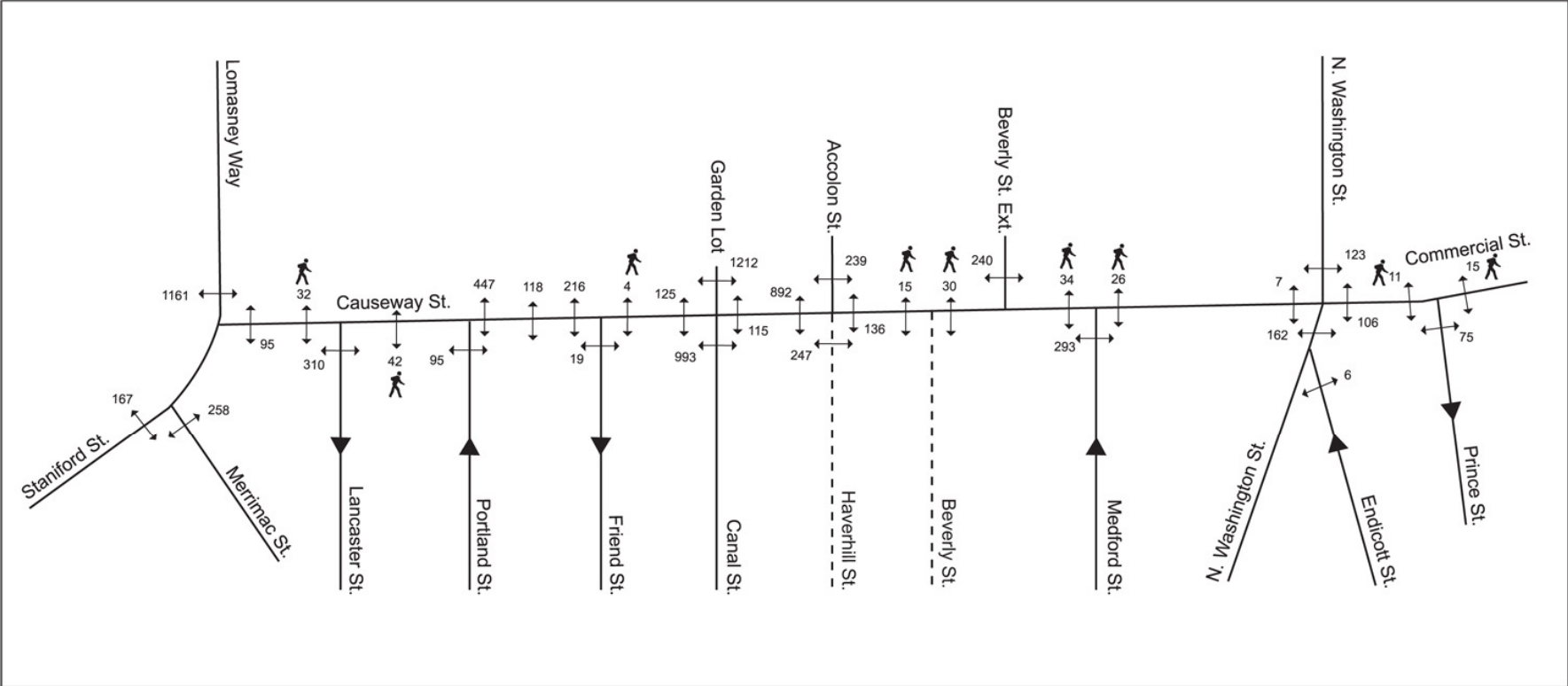
Existing Conditions (2007) Pedestrian Volumes, AM Peak Hour






Not to scale.

-  Street Not Yet Open
-  One-way Direction of Travel
-  Jaywalking

Existing Conditions (2007) Pedestrian Volumes, PM Peak Hour



Not to scale.

-  Street Not Yet Open
-  One-way Direction of Travel
-  Jaywalking

