

Joint Task Force Meeting for *Corridor-wide Guidelines*



Dorchester Avenue Transportation & Streetscape Improvements Action Plan
August 16, 2006



HOMEWORK - Things to think about :

- 1. If you were asked to describe Dorchester Avenue to someone from out of town, what would you say?**
- 2. If you could snap your fingers and change one thing about the way Dorchester Avenue looks, what would it be?**



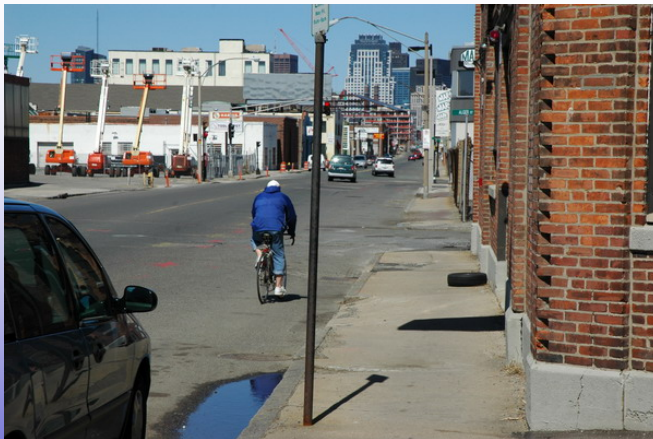
Dorchester Avenue Transportation & Streetscape Improvements Action Plan

August 16, 2006



South Boston

- Industrial
- Narrow sidewalks
- Poor repair
- No relief



Andrew Square

- Wide asphalt
- Challenging crossings
- Orientation
- Parking edges
- No relief



Dorchester Avenue Transportation & Streetscape Improvements Action Plan

August 16, 2006



North of Fields Corner

- Many vehicle-oriented uses
- Parking lot edges
- Narrow sidewalks



Fields Corner

- Many vehicle-oriented uses
- Parking lot edges
- Narrow sidewalks
- Many storefronts



Dorchester Avenue Transportation & Streetscape Improvements Action Plan
August 16, 2006



North of Lower Mills

- More residences
- Park/institution edges
- Parking lot edges
- Many storefronts



Dorchester Avenue Transportation & Streetscape Improvements Action Plan
August 16, 2006



Lower Mills

- Mix of scales
- Parking lot edges
- Narrow sidewalks
- More recent infrastructure



Dorchester Avenue Transportation & Streetscape Improvements Action Plan

August 16, 2006



Corridor-Wide Guidelines

Why are corridor-wide guidelines important?

- A consistent look for the corridor strengthens the image of a district or neighborhood
- A coordinated palette of elements is more visually pleasing
- Guidelines allow for variations within a set of limits



Dorchester Avenue Transportation & Streetscape Improvements Action Plan

August 16, 2006



Should we have a consistent look?
Or, varied?

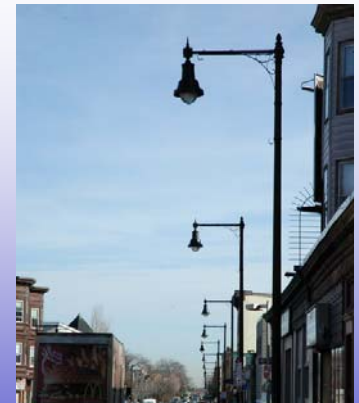
Consistency as a starting assumption

What elements are the most visible?

Street lighting, trees, sidewalk pavement

What is available in the standard City
palette?

City provides maintenance, proven reliability,
Wall fixtures



Dorchester Avenue Transportation & Streetscape Improvements Action Plan

August 16, 2006



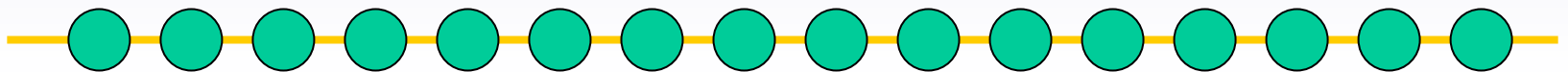
Inventory of Existing Elements

1. Identify those design elements that are consistent along the length of Dorchester Avenue
2. Identify those elements that are specific to a particular location
3. Note those elements that have been recently installed and are unlikely to change
4. Understand the design and materials planned for Peabody Square



Arrangement of Elements

Elements, such as street lights, are placed frequently along entire corridor. This forms a **continuous** visual pattern



These elements may be:

- Identical
- Part of a Family – style, color, materials
- Distinctly Different

Arrangement of Elements

Elements, such as specialty paving, are placed along entire corridor at selected locations. This forms a **periodic** visual pattern

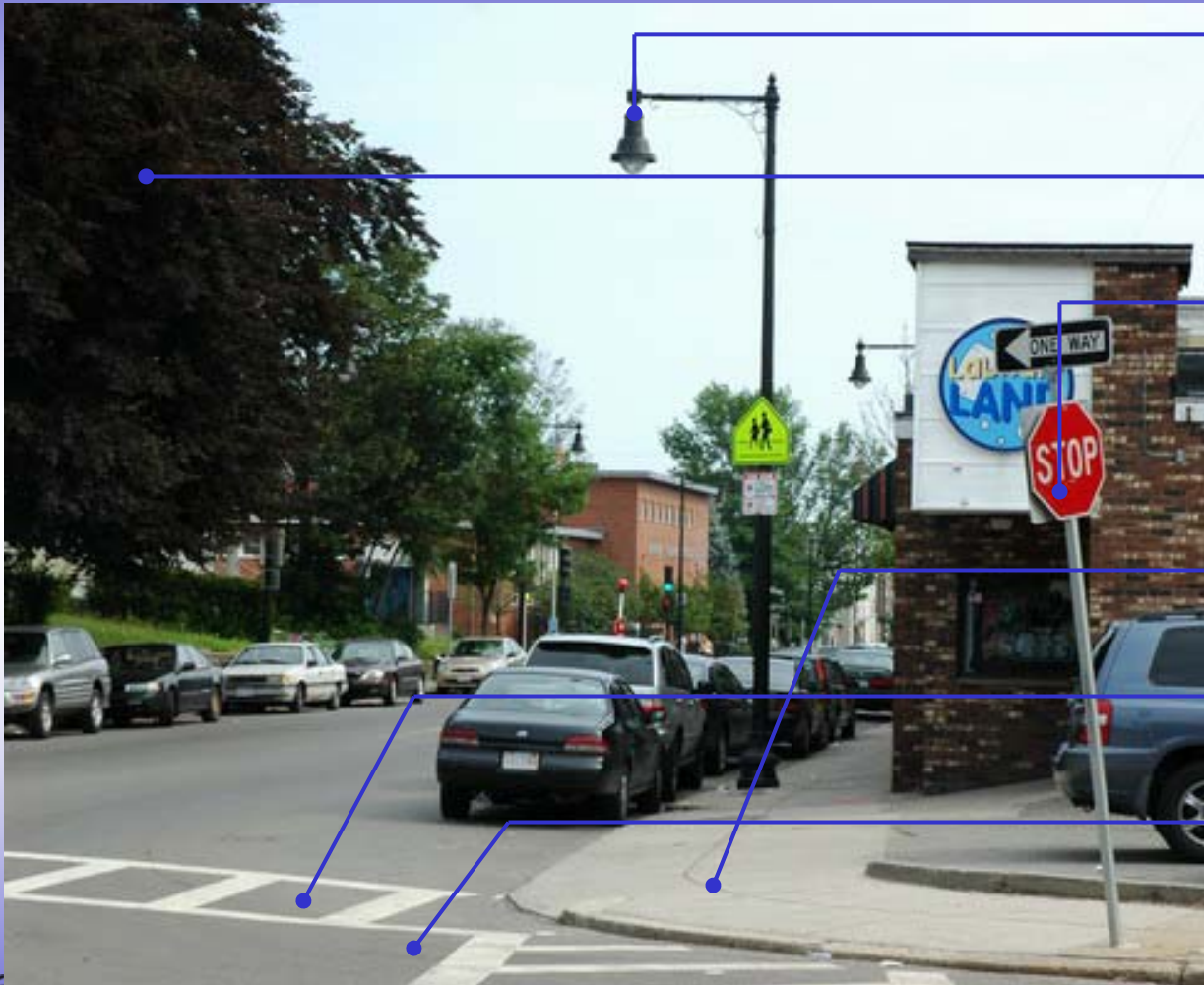


Similar to lighting, these elements may be:

- Identical
- Part of a Family – style, color, materials
- Distinctly Different

Range of Streetscape Elements

Primary - Secondary



Street lights

Street trees

Signs

Furniture

Sidewalk paving

Crosswalks

Roadway paving

Art

Primary Element - Existing Streetlighting



**Shepard's
Crook**



Pendant



Acorn



Shoe box



Cobra

Family (style, color, material)

Metal with Black Finish

Dorchester Avenue Transportation & Streetscape Improvements Action Plan

August 16, 2006



Primary Element – Sidewalk Paving



Predominately Concrete



Some Brick



Dorchester Avenue Transportation & Streetscape Improvements Action Plan
August 16, 2006



Secondary Element - Specialty Paving

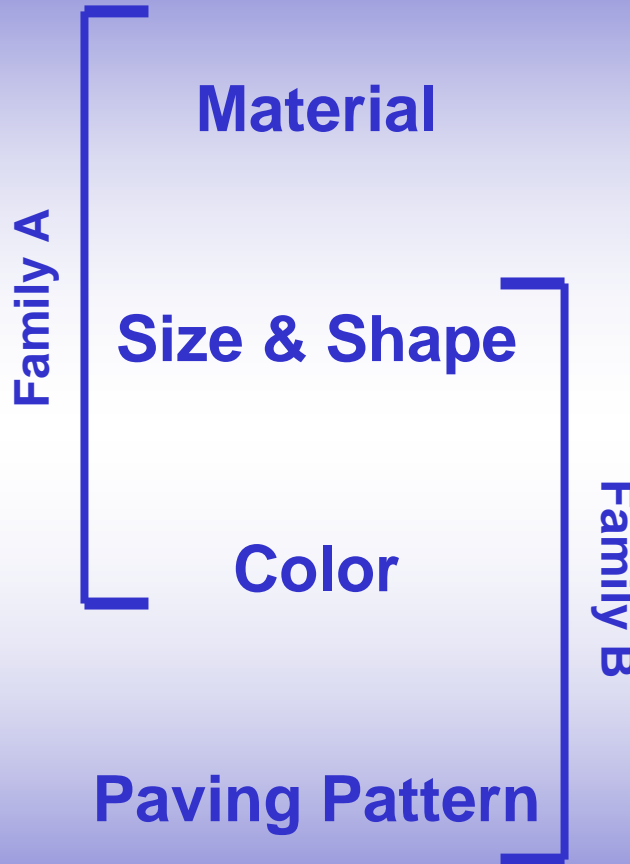
◦ Asphalt Pavers



◦ Concrete Pavers



Variables



◦ Wire Cut Bricks



Halvorson Design Group

Sidewalk Paving

Walkway and Feature Strip (activity centers)



- **Black Beauty topping**
- **Recycled Concrete as Aggregate**
- **Recycled Glass as Aggregate**
- **Larger Stone Aggregate**

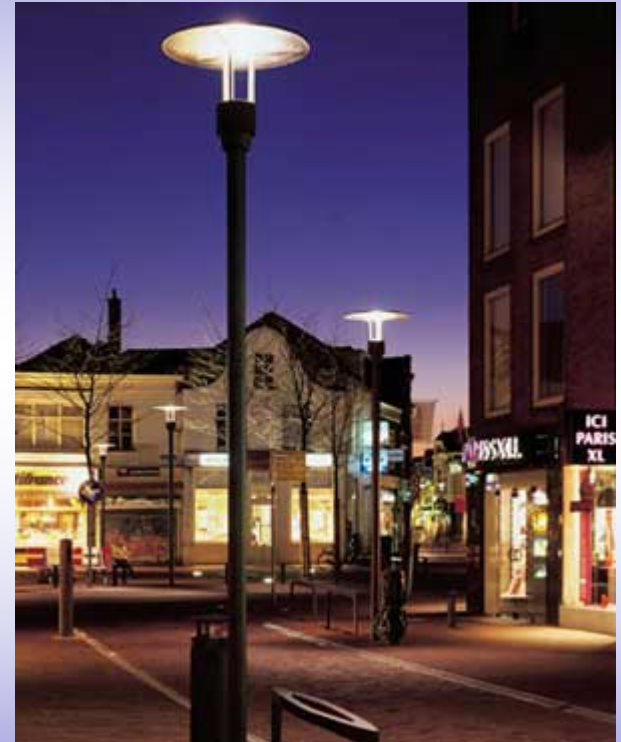
Primary Element: Street Trees



Secondary Element: Pedestrian-scaled lighting



- Highlight pedestrian environment
- Dark sky friendly



Secondary Elements

Benches, Bollards, Crosswalks, Trash Cans, Etc.

- Select to accompany primary elements
- Art as alternative



Dorchester Avenue Transportation & Streetscape Improvements Action Plan

August 16, 2006

Other furnishings



Art – Stand alone

Traditional



Contemporary



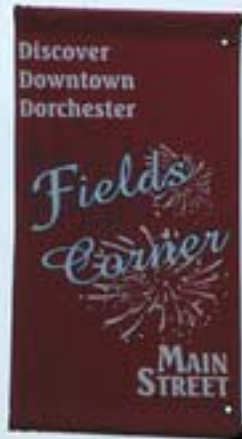
Dorchester Avenue Transportation & Streetscape Improvements Action Plan

August 16, 2006

Art – Integrated



Banners



Other Issues - Parking lot buffers



Green space edges



Dorchester Avenue Transportation & Streetscape Improvements Action Plan
August 16, 2006



CITY OF BOSTON
Thomas M. Menino
Mayor



End Product: a PALETTE

- **Select style and location of primary elements first:**
Streetlights, Sidewalk Pavement, Trees
- **Select all other elements to complement the primary elements**
- **Set dimensional standards**

Not much different than furnishing a room in your house...



Dorchester Avenue Transportation & Streetscape Improvements Action Plan
August 16, 2006



RECOMMENDED PALETTE

- **Streetlights:**
 - New: Continuous pendant
 - Limited space: Acorn
 - Maintain the “family”



RECOMMENDED PALETTE

- **Sidewalk Pavement:**
 - High-quality concrete
 - Accent strip where possible at activity centers



RECOMMENDED PALETTE

- **Street trees where possible**
 - Columnar and trimmed
 - 4' clear sidewalk width maintained
 - Address empty tree pits
 - In islands and open space in commercial districts



End Product: a PALETTE

- **Other furnishings:**

- Black-painted metal
- Wall bus shelters
- Landscapeforms benches
- Neighborhood signs and banners
- Arts at the nodes
- Edge and buffer standards

