



South Boston / Dorchester Avenue Improvement Charrette

April 27, 2006

AGENDA

Registration

Welcome and Introductions

Presentation

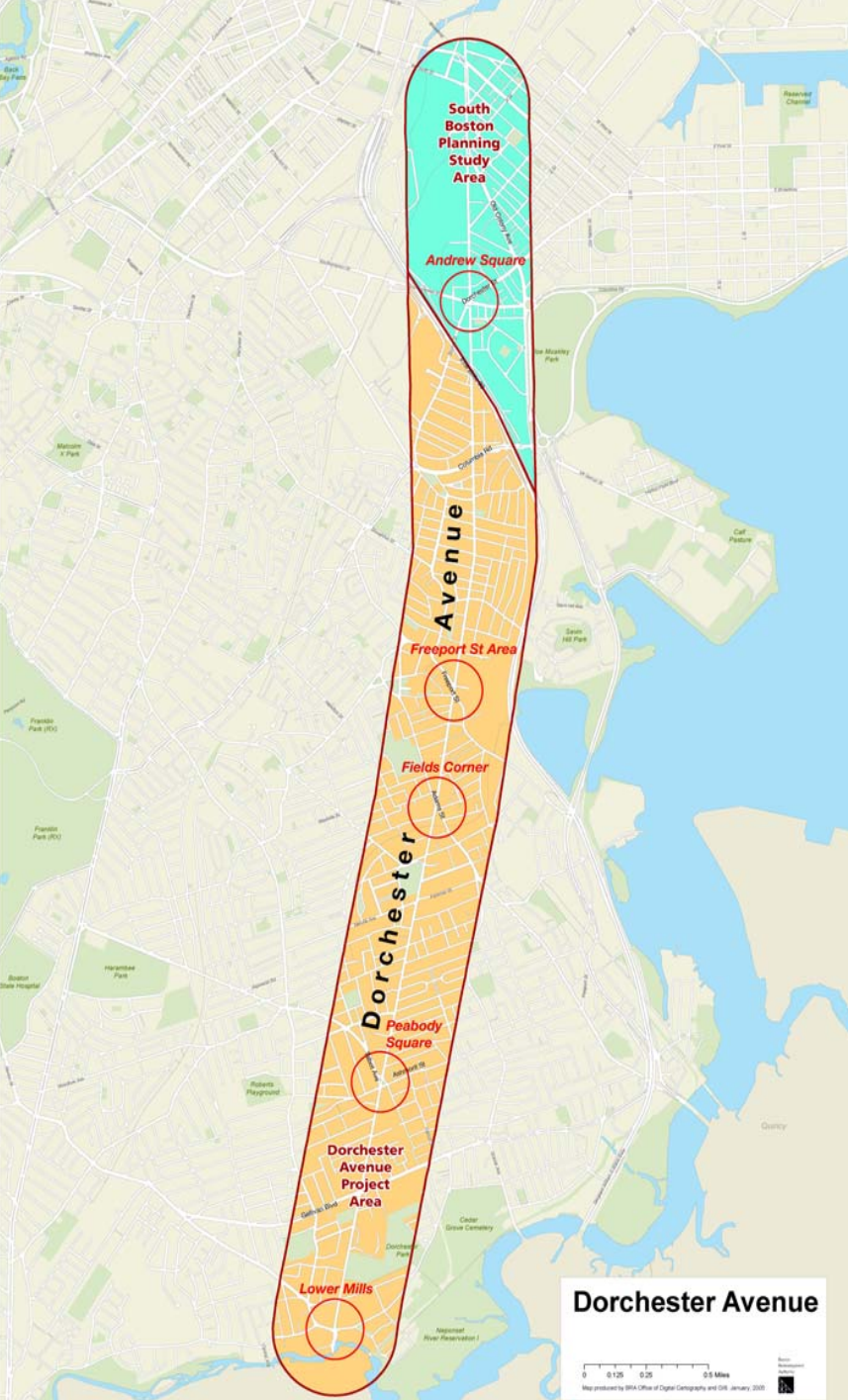
- Project Overview
- Overview of Study Area
- Project Updates

Charrette Session

- Breakout Group Discussions

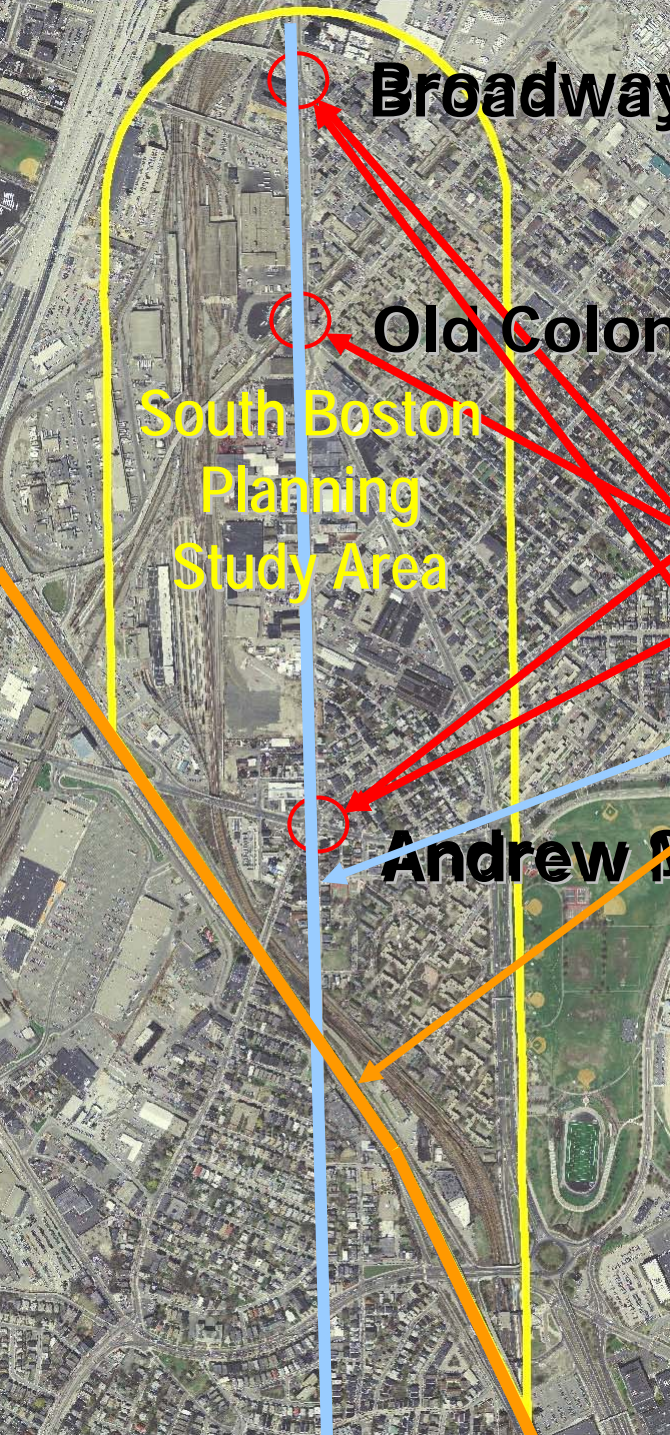
Report Back

Closing Remarks/Next Steps



Project Background

- Dorchester Avenue Project
- Separate Study for Andrew Square to Broadway



Broadway MBTA Station

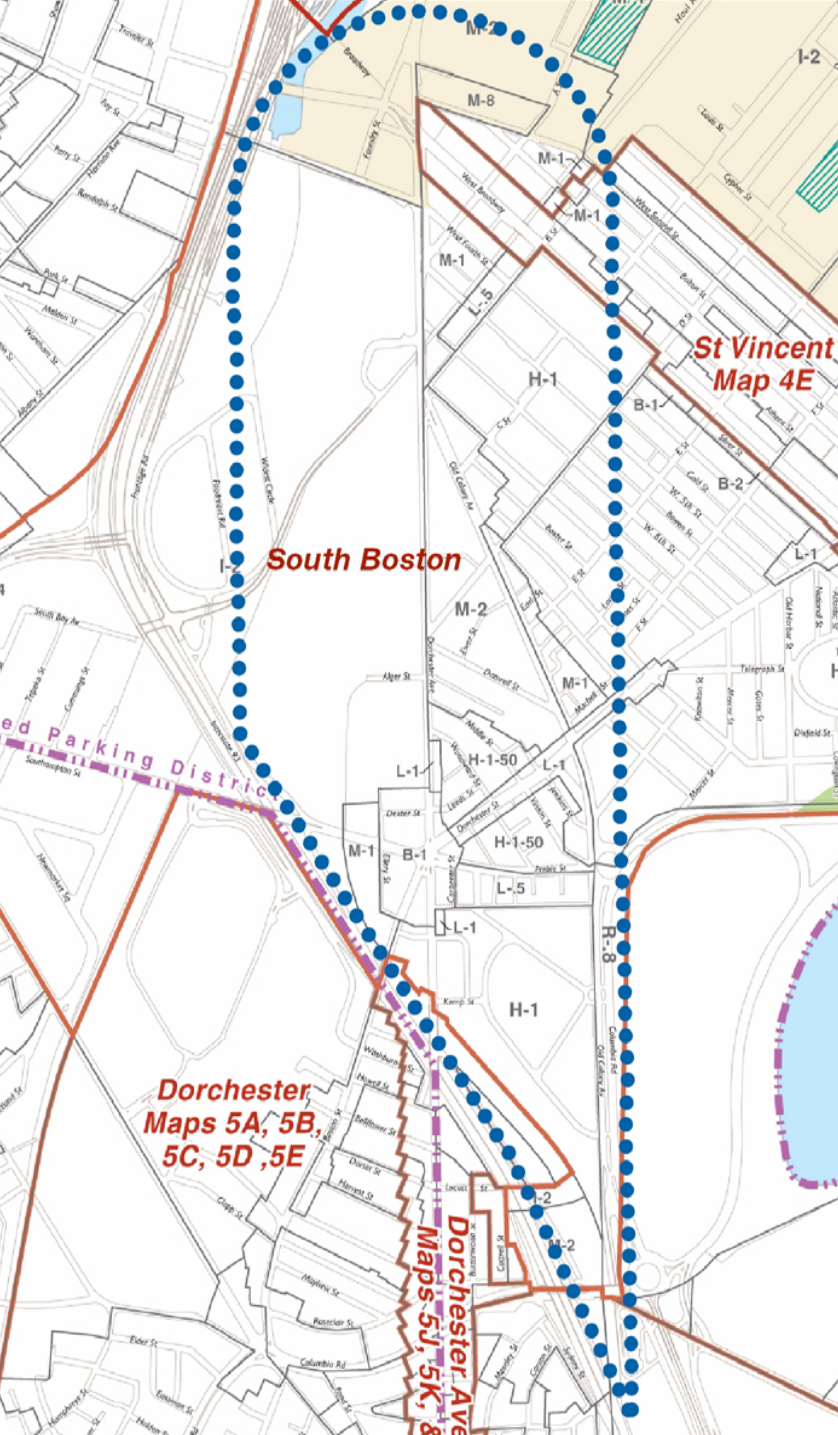
Old Colony

**South Boston
Planning
Study Area**

Andrew MBTA Station

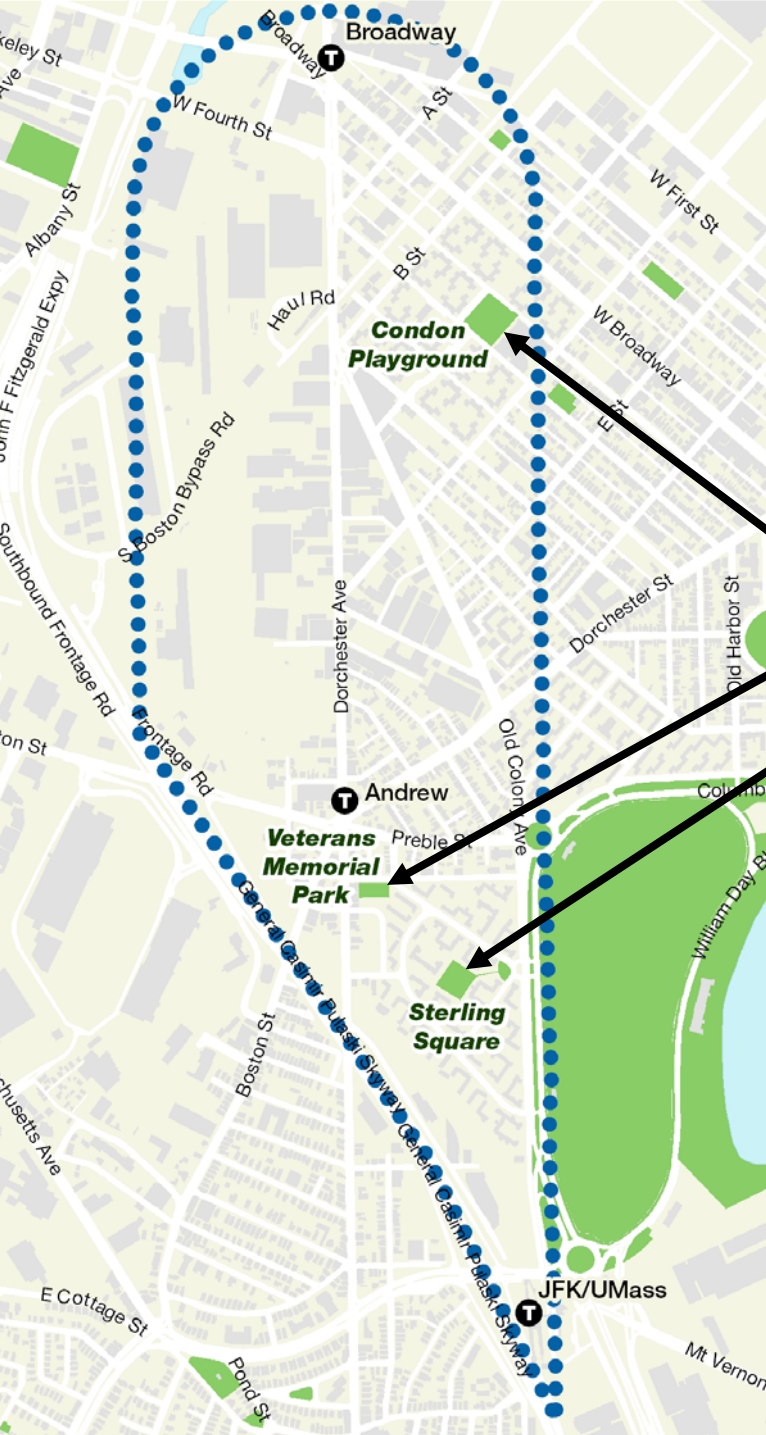
Transportation System

- 3 Major Intersections
- 2 MBTA Red Line Stations
- Dorchester Avenue
- Interstate 93



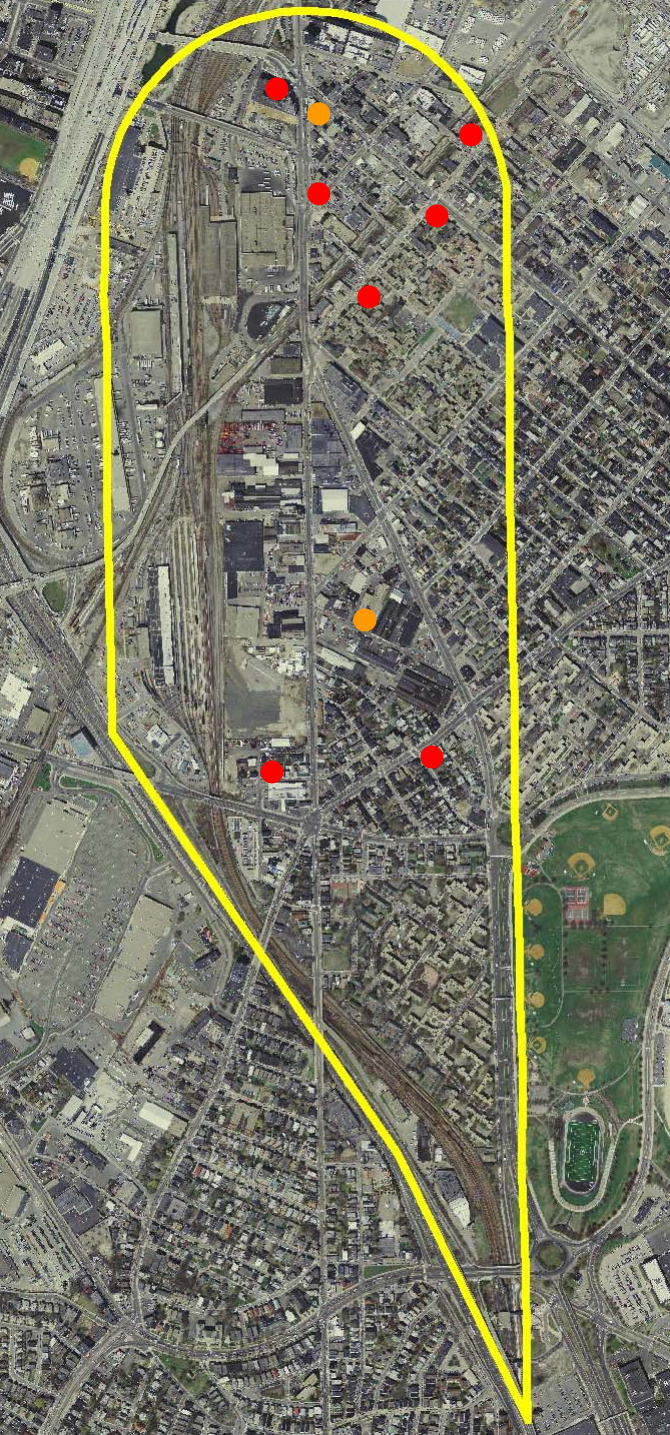
Existing Zoning

- Residential Districts
- Commercial Districts
- Industrial Districts



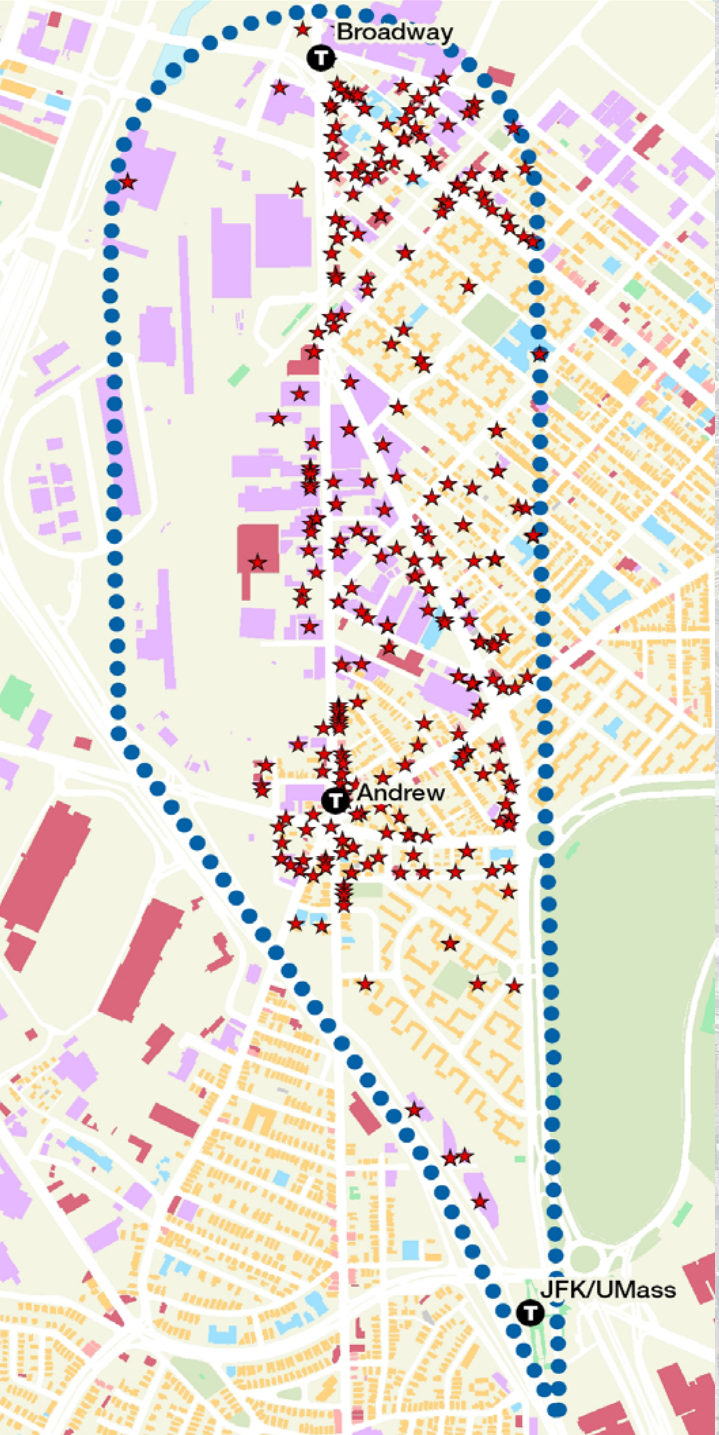
Open Space

- Condon Playground
- Veterans Memorial Park
- Sterling Square



Historic Places

- 7 Recommended for Further Historic Study
- 2 Recommended for National Register Designation



Businesses

- Approximately 450 Businesses in the Study Area
- Over 100 Businesses on Dorchester Avenue



Andrew Square - 1 mile x 0.4 feet



Andrew Square

DOT
AVE SOUTH BOSTON
DORCHESTER AVENUE
IMPROVEMENT STUDY



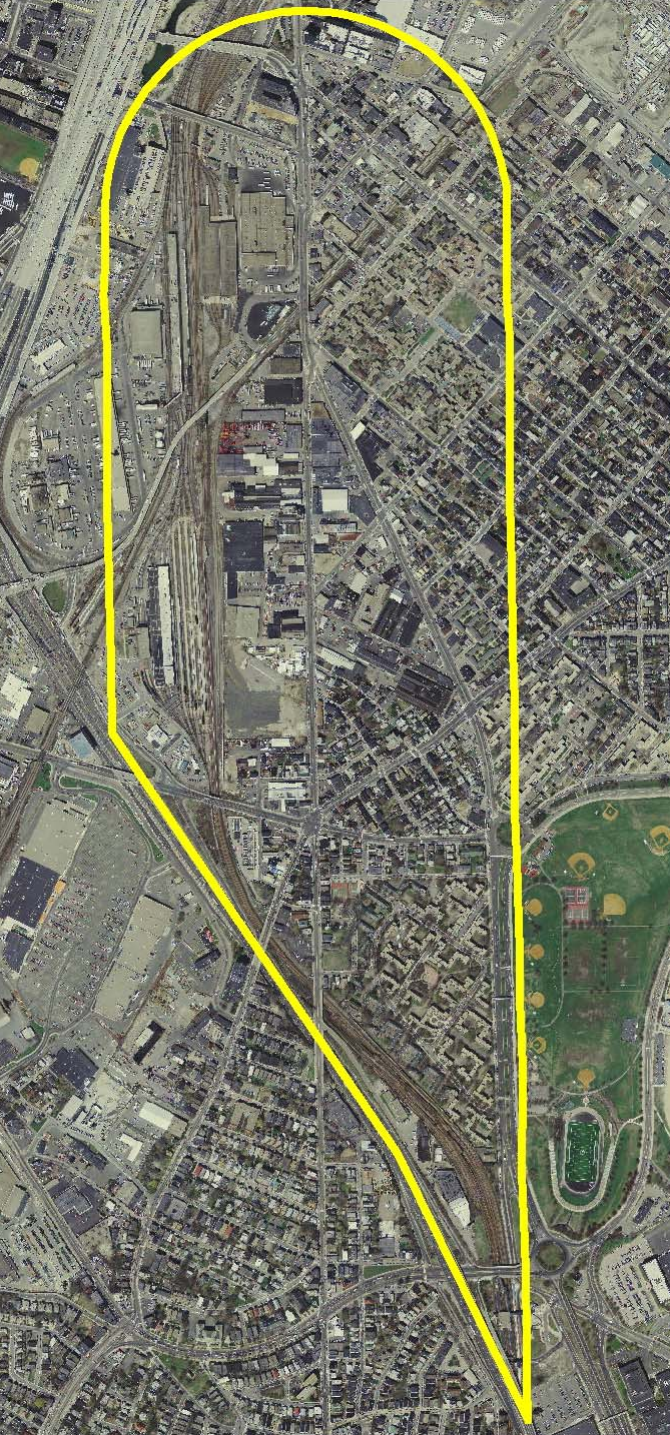
Old Colony & Dorchester Avenue

DOT
AVE SOUTH BOSTON
DORCHESTER AVENUE
IMPROVEMENT STUDY



Broadway & Dorchester Avenue

DOT
AVE SOUTH BOSTON
DORCHESTER AVENUE
IMPROVEMENT STUDY

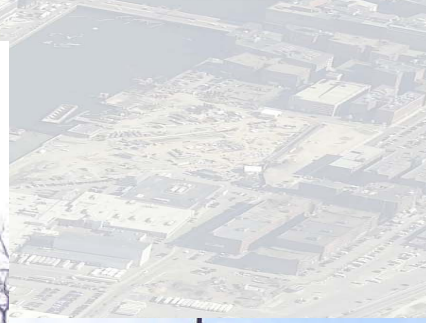


Avenue Fabric

- Multi-Family Residential
- Retail and Services
- Commercial Businesses
- Industrial Businesses
- Public Transportation
- Roads and Streetscape



- **Historic Homes**
- **Modern Architecture**
- **Unique Housing**



- New Development
- Historic Landmarks



- Signature Businesses
- Vibrant Districts
- Mix of Uses



- Industrial Buildings
- Changing Businesses

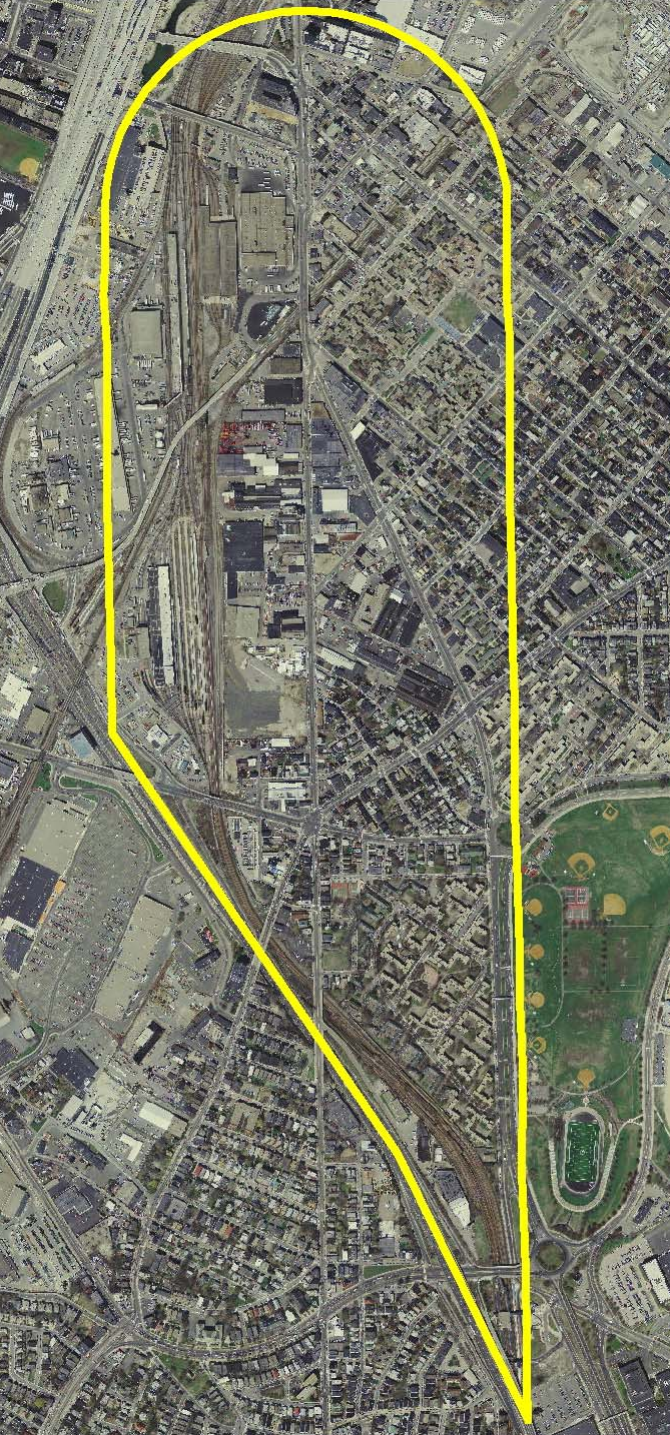
MBTA Stations

Andrew Square Station



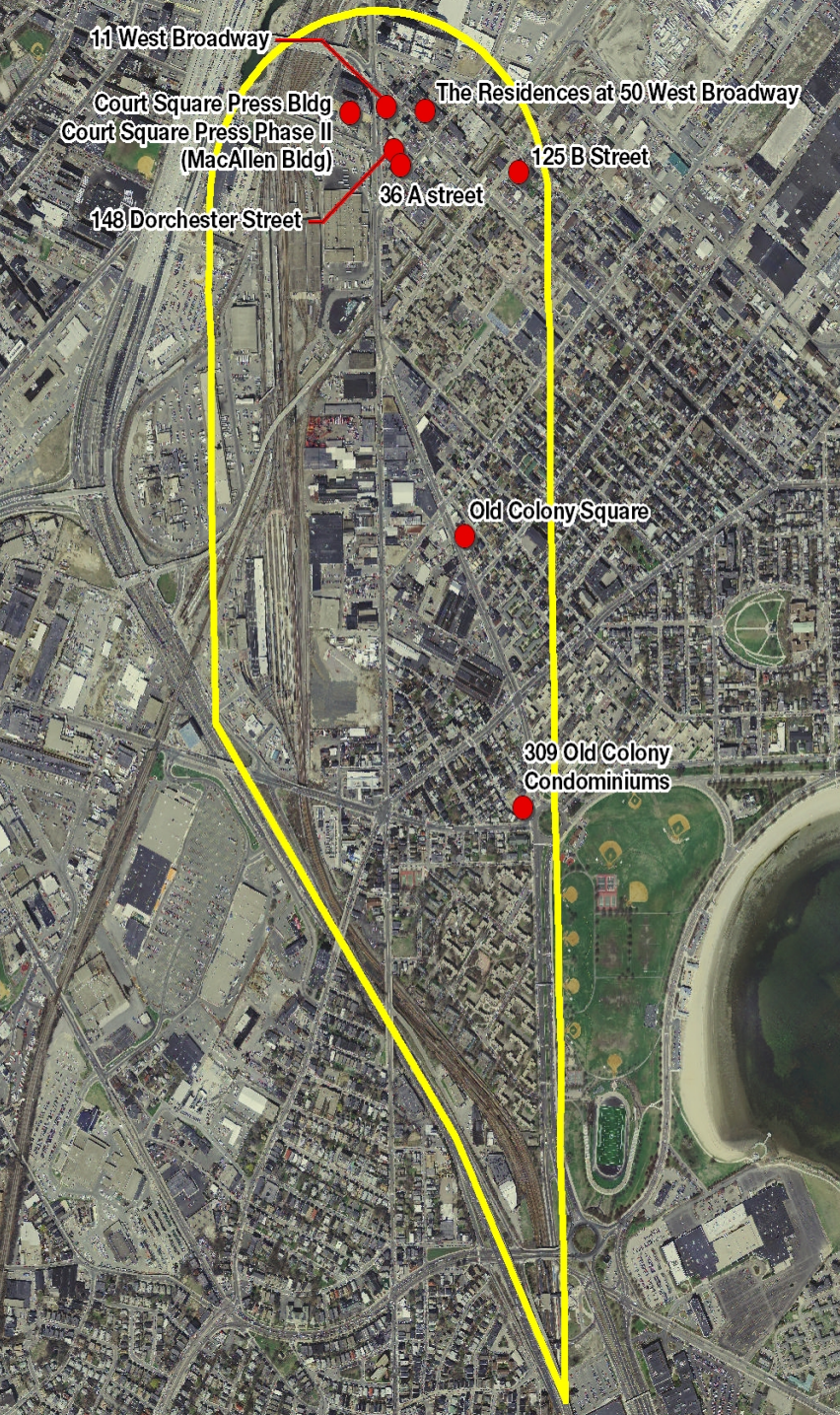
MBTA Stations Broadway Station





Public Transportation

- 2 MBTA Subway Stations
- Bus Routes 5, 9, 10, 11, 16, 17, 18, and CT 3



Recent & Proposed Projects

February 4th Community Charrette Summary of Comments

Transportation/Parking/Circulation

- Bus stops/shelters
- Off-street parking
- Parking restrictions (T stations and street corners)
- Narrow sidewalks
- Condition of crosswalks and signal timings

February 4th Community Charrette Summary of Comments

Neighborhood Businesses

- Services such as post office, food store, food market, pharmacy, etc.
- Business façade standards for signs
- Activate groundfloors with retail
- More restaurants
- Branding for retail businesses

February 4th Community Charrette Summary of Comments

Community Development

- Lacks gathering spaces/function halls
- Workforce development
- Security at T stations
- Density of new residential development
- Improve neighborhood gateways

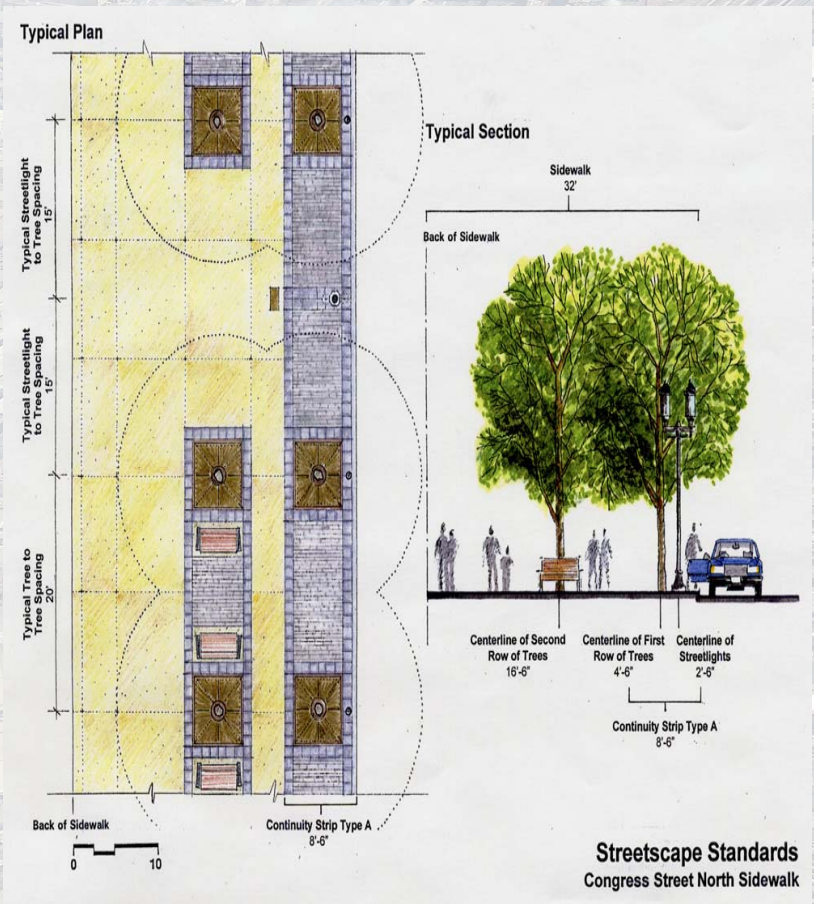
February 4th Community Charrette Summary of Comments

Streetscapes

- Benches, trash cans, toilets, planters, banners, street signs, etc.
- Improved and consistent lighting
- Consistent street furniture
- Street trees and appropriate landscaping

Project Updates

- SB Dot Ave Task Force
- RFP/Transportation & Streetscape Consultant





Four Discussion Topics for Each Group

- Neighborhood Businesses
- Community Development
- Streetscapes
- Transportation