

Area B-2 Police Station

Dudley Square Vision Subcommittee Meeting – May 21, 2008



DUDLEY
SQUARE
VISION



City of Boston
Thomas M. Menino, Mayor

■ Leers Weinzapfel Associates

Agenda

1. Introduction of Team
2. Definition of Project & Timelines
3. Community Participation
4. LWA History & Presentation
5. Advisory Council
6. Next Meeting

Leers Weinzapfel Associates – Public Work

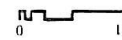


South Boston Police Station



- 1 Lobby
- 2 Guard Room
- 3 Supervisory Area
- 4 Commander
- 5 Clerk
- 6 Holding Rooms
- 7 Sallyport
- 8 Cells
- 9 Ambulance Garage
- 10 Garage

FIRST FLOOR PLAN



South Boston Police Station

Leers Weinzapfel Associates



South Boston Police Station – View of Lobby



South Boston Police Station – View of 2nd Floor Community Room



Blue Hill Avenue Youth Development Center

■ Leers Weinzapfel Associates



Blue Hill Avenue Youth Development Center – View of Lobby

■ Leers Weinzapfel Associates



George R. White Gymnasium & Teen Center

■ Leers Weinzapfel Associates



George R. White Gymnasium & Teen Center – View of Gymnasium

■ Leers Weinzapfel Associates



Roslindale Community Center

■ Leers Weinzapfel Associates



Roslindale Community Center – View of Gymnasium

■ Leers Weinzapfel Associates



Jackson Square Youth & Family Center

■ Leers Weinzapfel Associates



Fenton Judicial Center

■ Leers Weinzapfel Associates



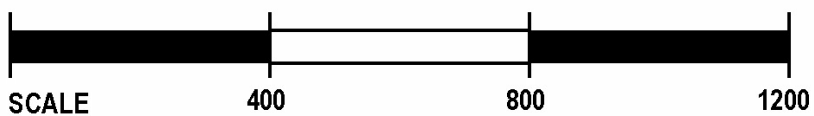
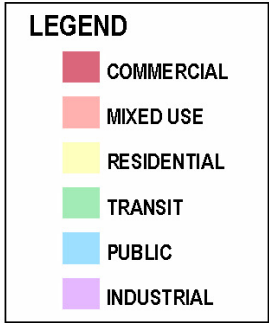
Fenton Judicial Center – View of Courtroom

■ Leers Weinzapfel Associates



Fenton Judicial Center – View of Lobby

Site and Context Analysis



Existing Conditions

■ Leers Weinzapfel Associates



Site Analysis – Pedestrian & Vehicular Study

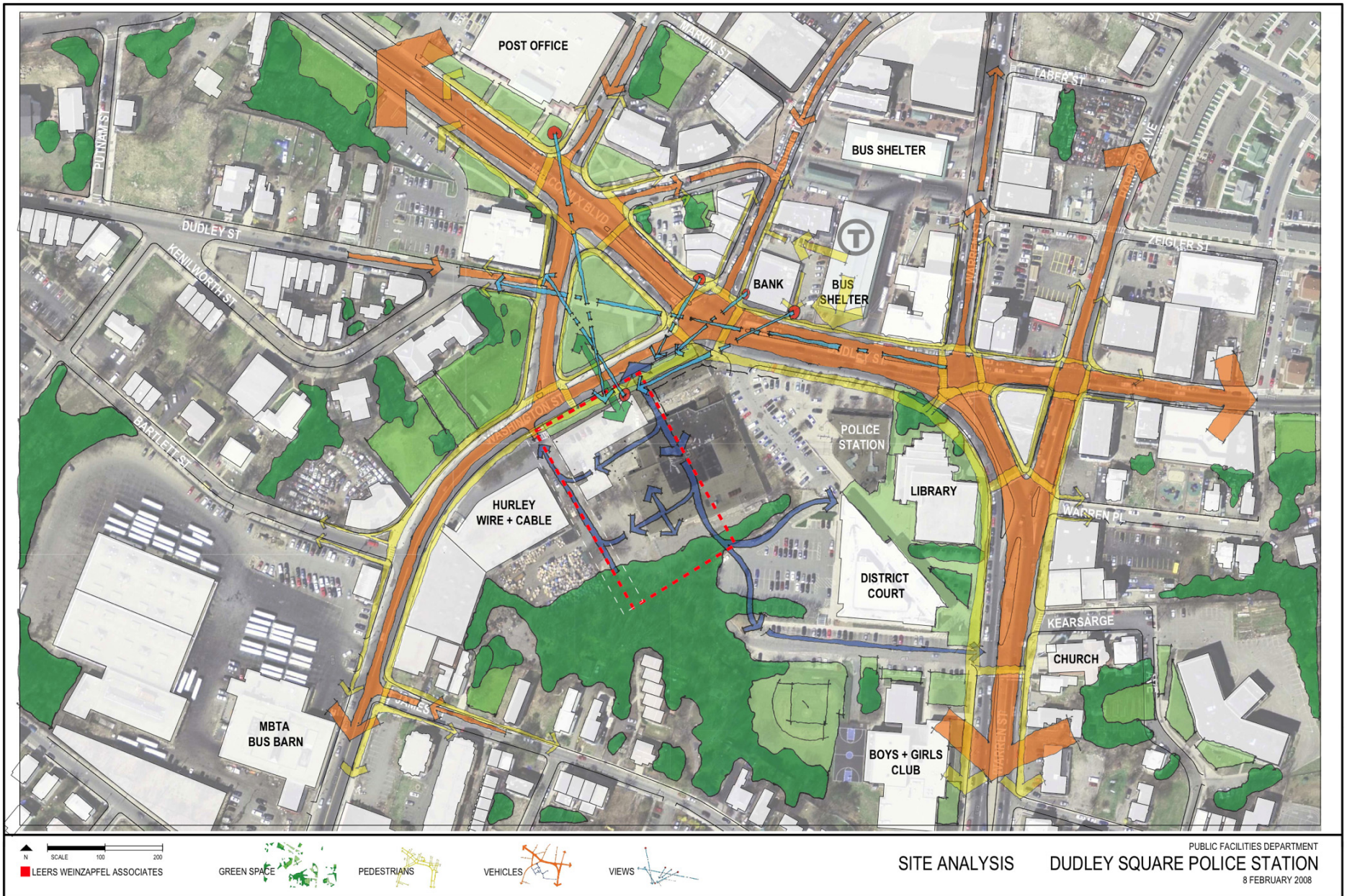


Site Analysis – Pedestrian Circulation & Views



Site Analysis – Green Space & Views

Leers Weinzapfel Associates



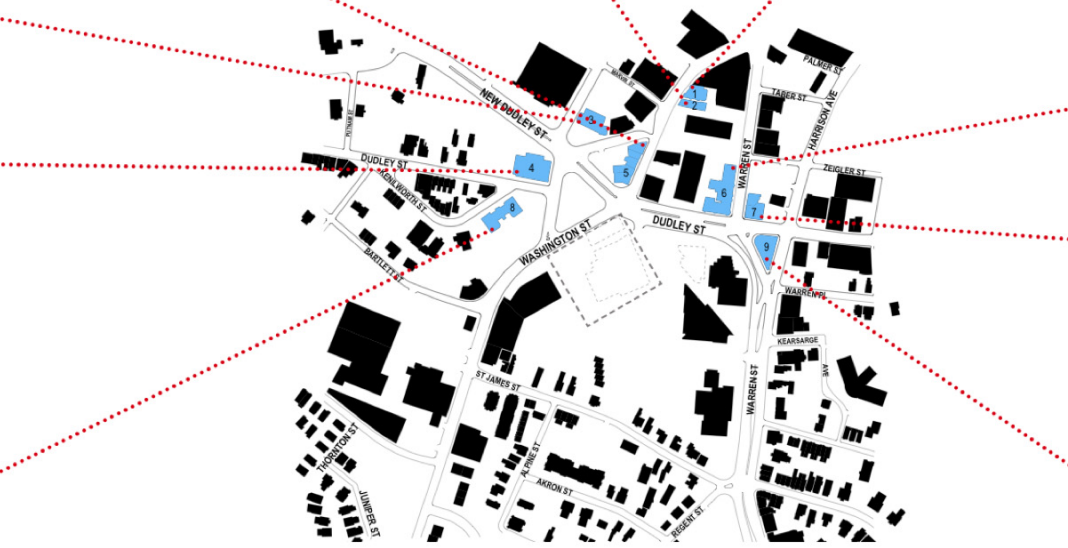
Site Analysis – Complete Site Analysis



- 1 DUDLEY SQUARE POST OFFICE
- 2 CENTRAL BOSTON ELDER SERVICES CENTER
- 3 CITIZENS BANK
- 4 DUDLEY SQUARE STATION
- 5 BANK OF AMERICA
- 6 BOSTON PUBLIC LIBRARY- DUDLEY BRANCH
- 7 ROXBURY COURT HOUSE
- 8 ROXBURY BOYS AND GIRLS CLUB

Context Analysis – Dudley Square

■ Leers Weinzapfel Associates



- 1 MIXED USE
- 2 MIXED USE
- 3 MIXED USE - RECENTLY RENNOVATED
- 4 FORMER BOYS AND GIRLS CLUB - MIXED USE - RECENTLY RENNOVATED
- 5 MIXED USE
- 6 FORMER HOTEL DARTMOUTH - MIXED USE- RECENTLY RENNOVATED
- 7 PALLADIO BUILDING - MIXED USE - RECENTLY RENNOVATED
- 8 FORMER DILLAWAY SCHOOL - RESIDENTIAL
- 9 MIXED USE

Context Analysis – Dudley Square



View up Warren Street



View from Police Station Parking



School Converted to Housing

■ Leers Weinzapfel Associates



View of Palladio Building



View of Dudley Square Station

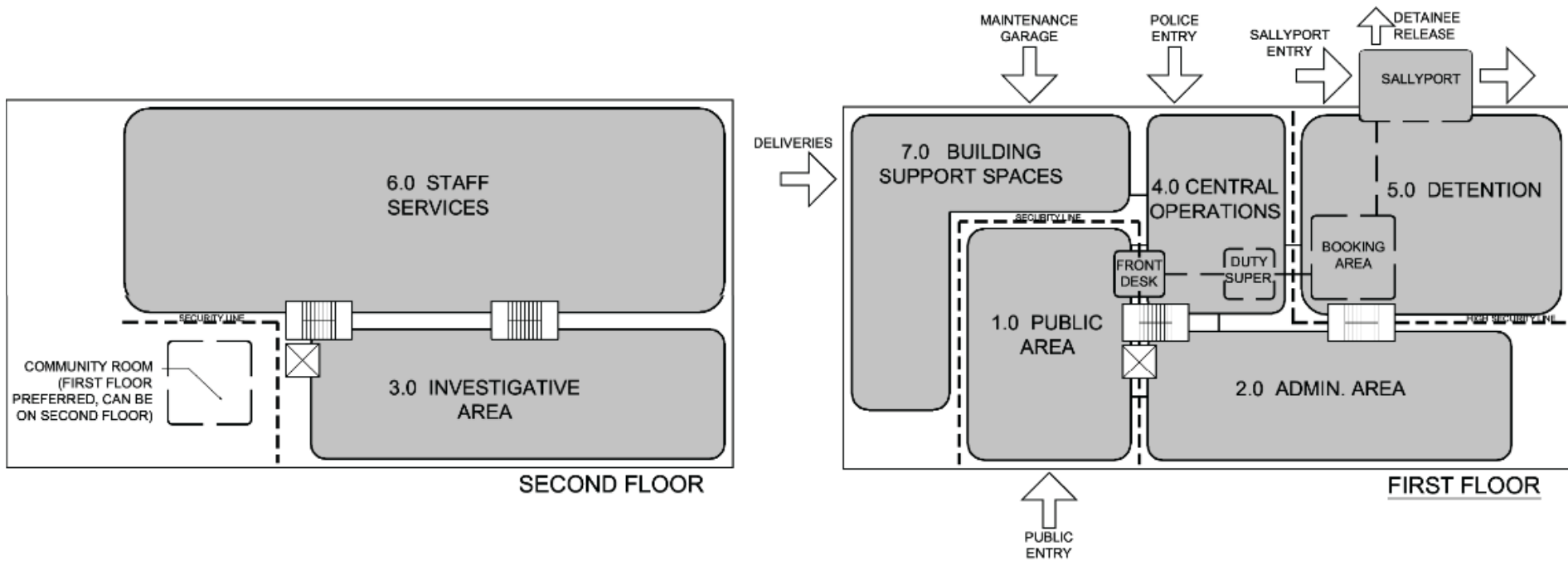


View of Interior of Dudley Square Station

Program

AREA B2 POLICE STATION PROGRAM

STATION SPACE	SQUARE FEET
PUBLIC AREA	1,488
Lobby/Reception	500
ATM Facility	30
Front Desk	120
Public Toilets	120
Community Room	718
ADMINISTRATIVE AREA	2,808
Deputy Superintendent	264
Commander's Office	264
Conference Room	320
Administrative Lieutenant's Office	120
Captain's Clerk	56
Clerk/Payroll	188
Community Service Office	640
Community Service Meeting Room	140
Work Alcove	36
Auto Investigation	140
INVESTIGATIVE ROOM	3,168
Detective Commander's Office	192
Detective Supervisor's Office	288
Detectives	1,836
Interview Rooms	280
Civilian Clerks, Detectives	182
Evidence Processing	90
Drug Unit	300
CENTRAL OPERATIONS	1,484
Duty Supervisors Office	144
Sergeants' Work Area (incl. supervisory area)	64
Report Writing Area	160
Evidence Room/Stolen Property	300
Special Storage	48
Short Term Evidence Storage	30
Mail	66
First Aid Toilet Room	56
Guard Room	616
PRISONER DETENTION	3,480
Booking Area	380
Booking Shower and Toilet	130
Pre-booking Holding Cell	140
Holding Cells: Females, Juveniles	160
Prisoner's Property	60
Cell Block Area - 20 cells	2,160
Sallyport	450
STAFF SERVICES	5,995
Locker Rooms for Men; Supervisors and Patrol Officers	3,570
Locker rooms for Women; Supervisors and Patrol Officers	1,275
Physical Fitness Room	1,000
Detail Clerk	150
BUILDING OPERATIONS	1,822
Custodians' Closets (one at each floor)	40
Mechanical spaces - HVAC, E, FA, IT	1,102
Elevator (two floors)	160
Elevator Machine Room	80
Dead File Storage	200
Exterior Storage Room	100
Building Storage Room (w/custodian lockers)	140
VEHICULAR OPERATIONS	832
Maintenance Garage	832
SUBTOTAL NET SPACE	21,077
TOTAL GROSS SPACE (1.5 factor)	31,616
EXISTING AREA B2 STATION	22,261

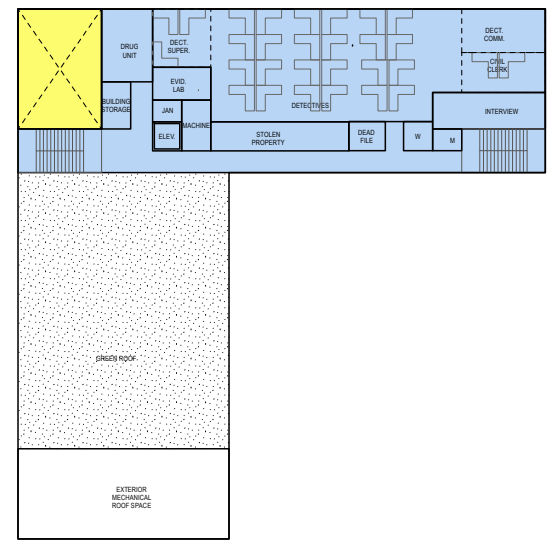
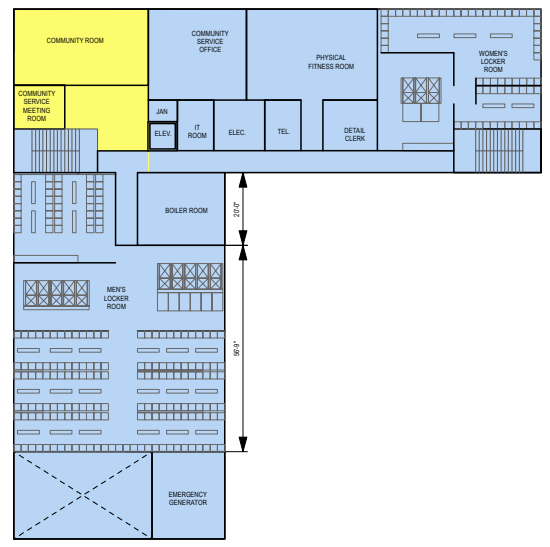
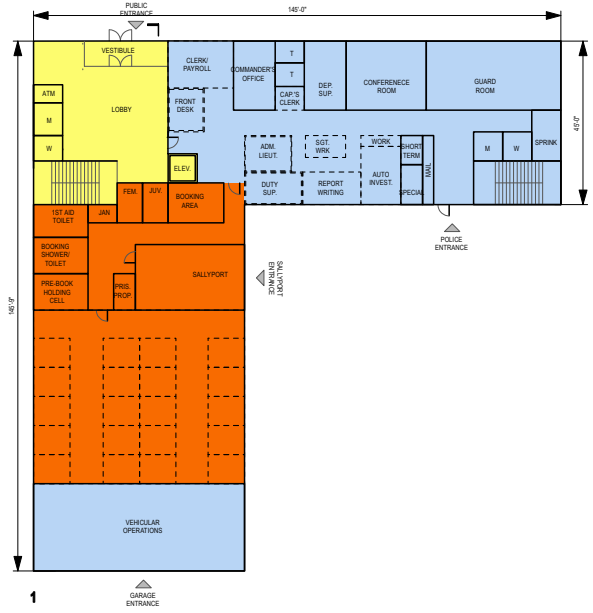


Preliminary Program & Massing Studies

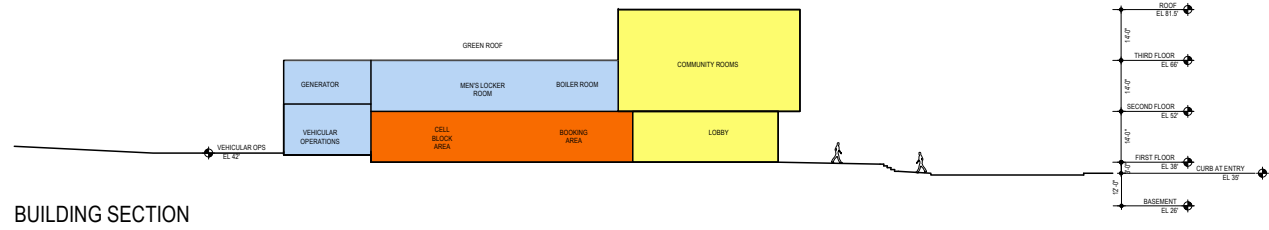
28,940 SQ FT

LEGEND

- COMMUNITY AREA
- POLICE OPERATIONS
- DETENTION



BUILDING PLANS



BUILDING SECTION

N
1/32" = 1'
LEERS WEINZAPFEL ASSOCIATES

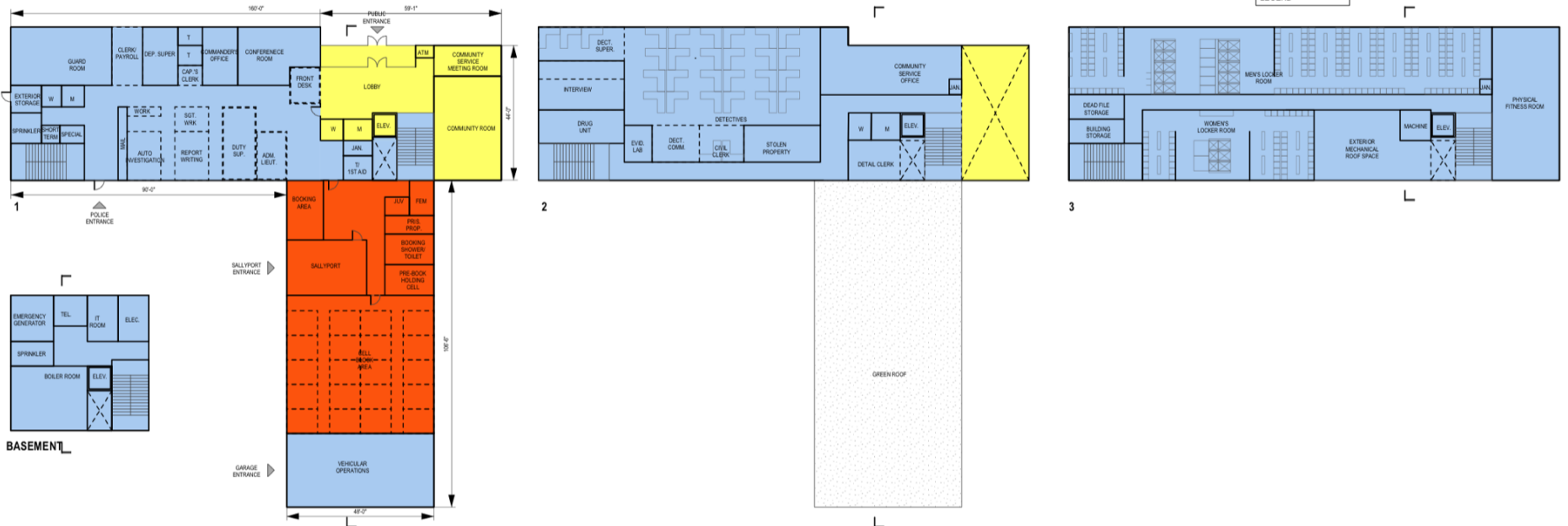
"L-REVERSE" PLANS AND SECTION
HURLEY-SIDE ENTRANCE

PUBLIC FACILITIES DEPARTMENT
DUDLEY SQUARE POLICE STATION
25 FEBRUARY 2008

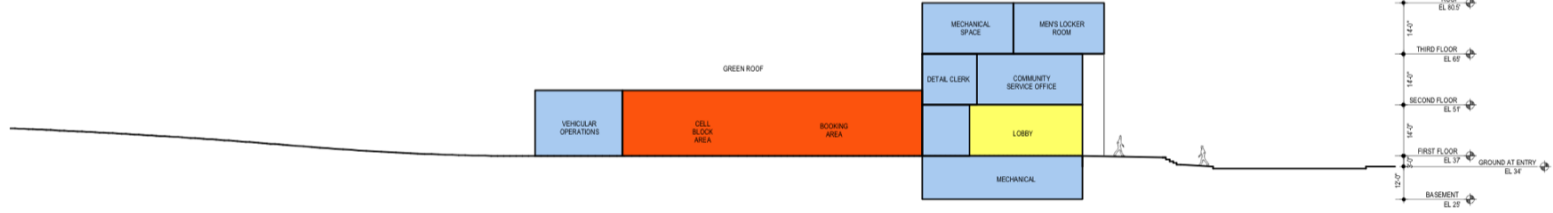
29,416 SQ FT

LEGEND

- COMMUNITY AREA
- POLICE OPERATIONS
- DETENTION



BUILDING PLANS



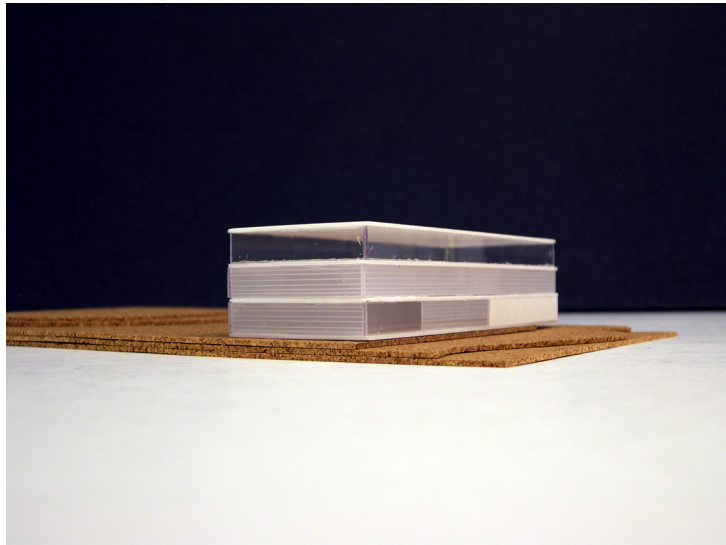
BUILDING SECTION

N
1/32" = 1'

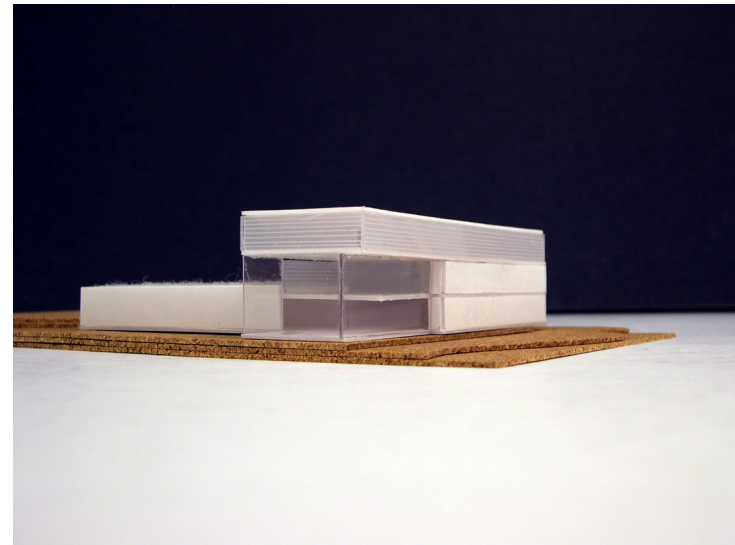
LEERS WEINZAPFEL ASSOCIATES

"T" PLANS AND SECTION
DUDLEY-SIDE ENTRANCE

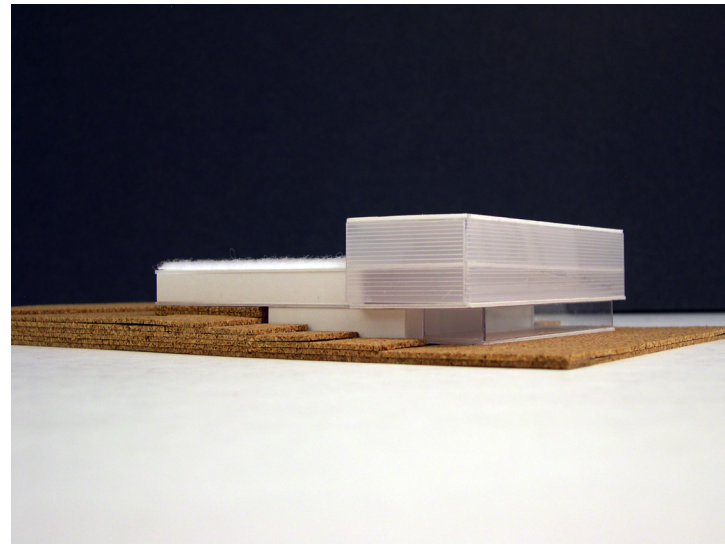
PUBLIC FACILITIES DEPARTMENT
DUDLEY SQUARE POLICE STATION



“Block” Scheme



“L” Scheme



“T” Scheme