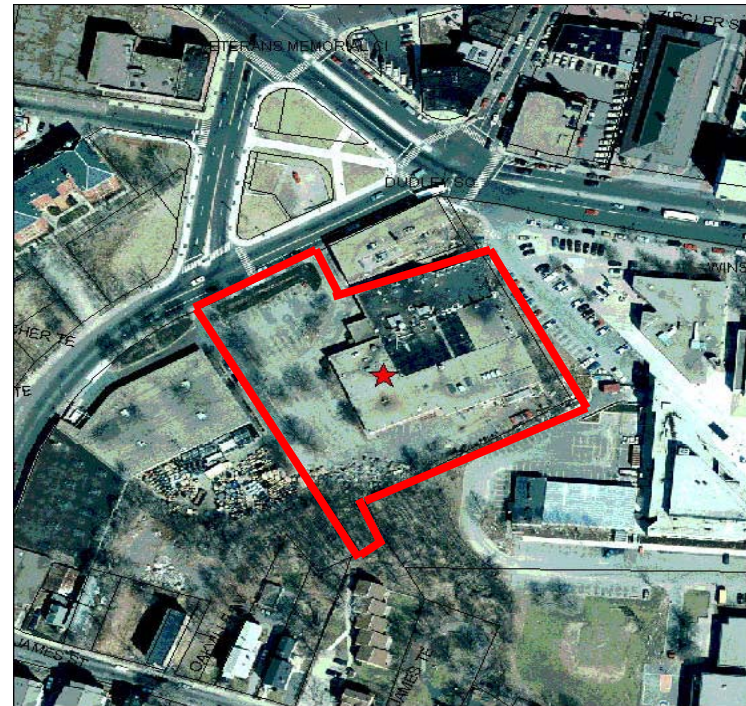




City of Boston
Thomas M. Menino, Mayor

**DUDLEY
SQUARE**
.....
VISION



Dudley Square Vision Project Elected Officials' Update Meeting

August 19, 2008

Boston Redevelopment Authority ~ Board Room

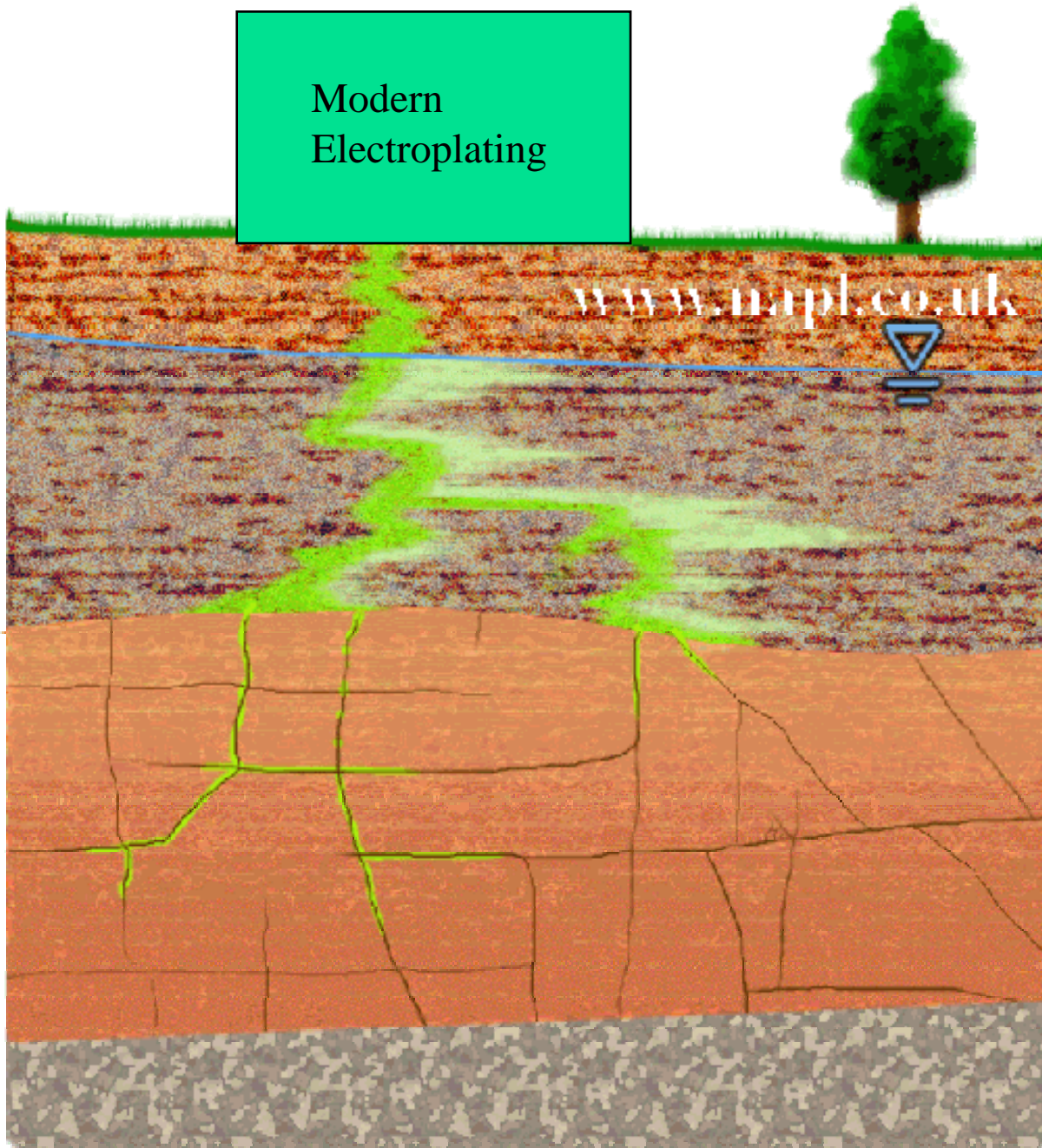
Key Dates

- 1955 to 1994 onsite electroplating facility
- 1994 MWRA and the MA DEP order the facility to cease operations and remove and dispose of all wastes present at the property
- 1995 Owners abandon facility,
- 1995 MA DEP RTN # 3-11352 is opened,
- 1995 MA DEP and US EPA conduct emergency response actions, imminent hazard is avoided.
- 1999 City of Boston forecloses on the property

Modern Electroplating “Uncontrolled Waste Site”

- Key elements that define a “site” relative to MA DEP and US EPA
 - **Source** (the hazardous material)
 - **Release** (the leak, spill, improper disposal)
 - **Targets** (people, the environment)

Modern
Electroplating

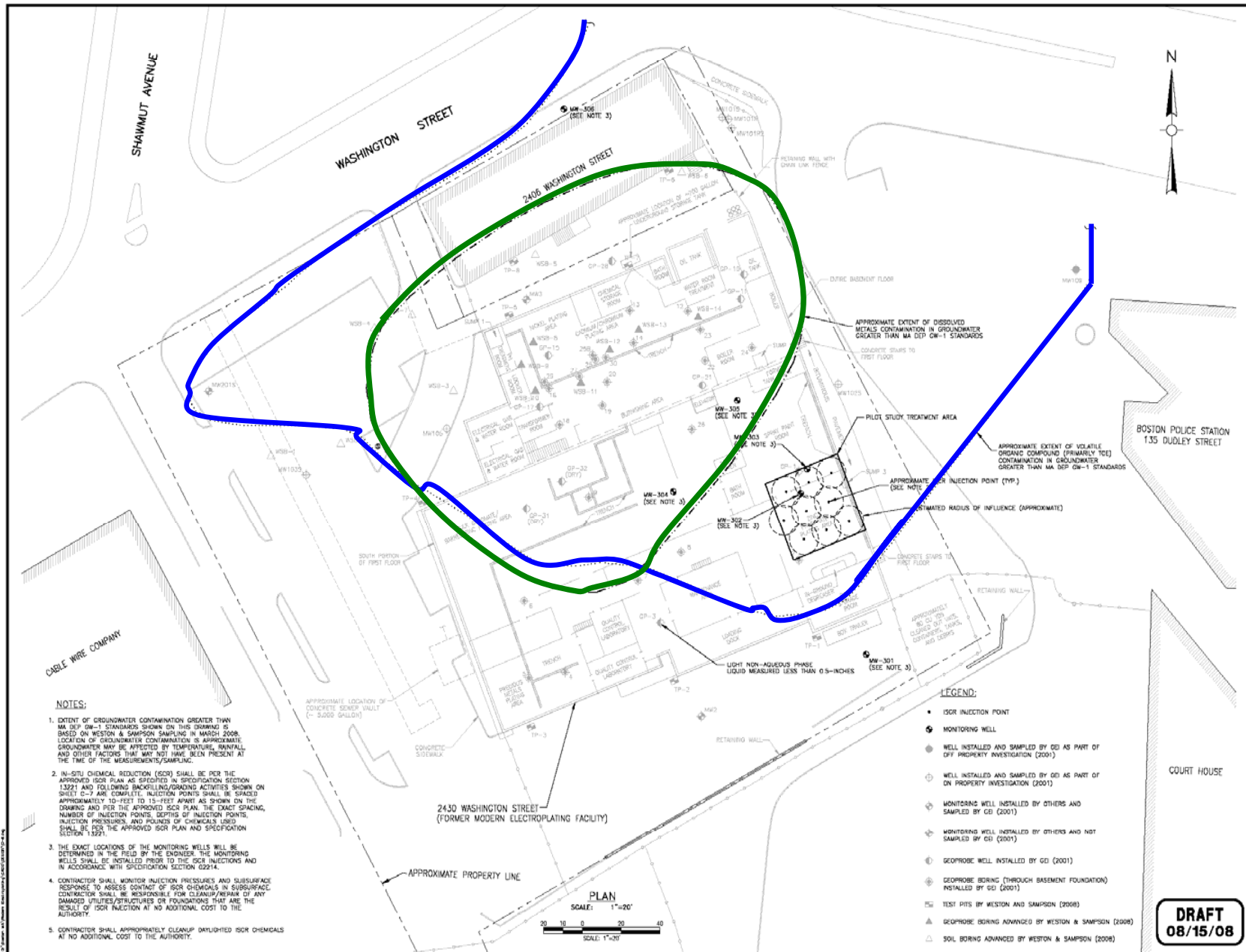


DNAPL

What is the City of Boston responsible for?

- Securing the site and preventing the spread of contamination
- The cause (**Source**) and effects (**Release**) of the uncontrolled contamination
 - Effected Media
 - Soil (on site) and Groundwater (on & off site)
- Remediation of the soil and groundwater
 - Eliminating the migration of contaminants to the **Targets**
- Preparing the entire property for reuse
- Working within the framework of the Dudley Vision to stimulate economic development and enhance the health of the neighborhood

Current Knowledge of the Extent Contamination



The Mission - Redevelop a Brownfields Site

The Mayor's administration goals of -

- reducing violent crime,
- increasing affordable housing,
- creating new jobs, and
- narrowing health disparities.

Mayor's Dudley Working Group goals of –

- First LEED certified Municipal building
- Dudley Square revitalization
- Removal of blight
- Long term protection of the health and environment of the neighborhood

EPA & MA DEP goals of –

- Protection of human health and the environment
- Promote sustainable reuse
- Empower states, cities, and communities
- Increase tax base
- Facilitate job growth

Accomplishing the Goals

- Building B2
 - Accomplished through the Building Demolition, Source Removal, and Construction
- Plan – RFQ, RFP, Design and Building Plans
- Long Term Monitoring and Site Closeout
 - Establishing a condition of Monitored Natural Attenuation.
 - Data analysis and collection through DND, Public Health, Community Groups.
- Plan – Dudley Vision Environmental Sub-Committee (DND, BRA, DPH, DCAM)