



# Fairmount Indigo Planning Initiative

## Four Corners / Geneva Avenue Working Advisory Group

### (WAG) Meeting #2

September 23, 2014  
6:00 – 8:00 PM

Location: TBD

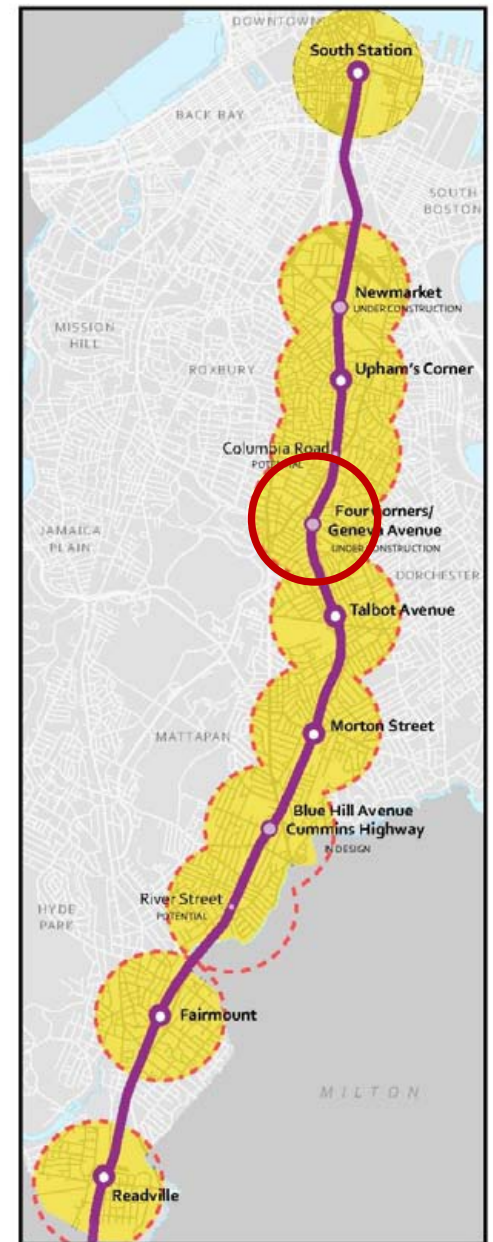
*Prepared by:*

**The Cecil Group Team**  
 The Cecil Group  
 HDR Engineering, Inc.  
 Byrne McKinney & Associates, Inc.  
 McMahon Associates  
 Bioengineering  
 SAS Design, Inc.  
 Shook Kelley



# MEETING #3 AGENDA

1. Introduction, Roles and Rules
2. Transportation Context
3. Discussion
4. Community Forum Outreach/Prep
5. Next Steps



Four Corners/Geneva Ave. Working Advisory Group (WAG)

# INTRODUCTION, ROLES AND RULES



# TRANSPORTATION CONTEXT



# EXISTING CONDITIONS

## Transit Oriented Development (TOD)

Many existing elements can be strengthened to support TOD:

- Compact, walkable communities centered around transit
- Require walkable design to facilitate connections -- the pedestrian given priority, as well as bicycle access
- Higher density development with integrated uses within a 10-minute walk of Four Corners/Geneva Station
- Reduced and managed parking to support transit use & non-motorized transportation
- Create a sense of place



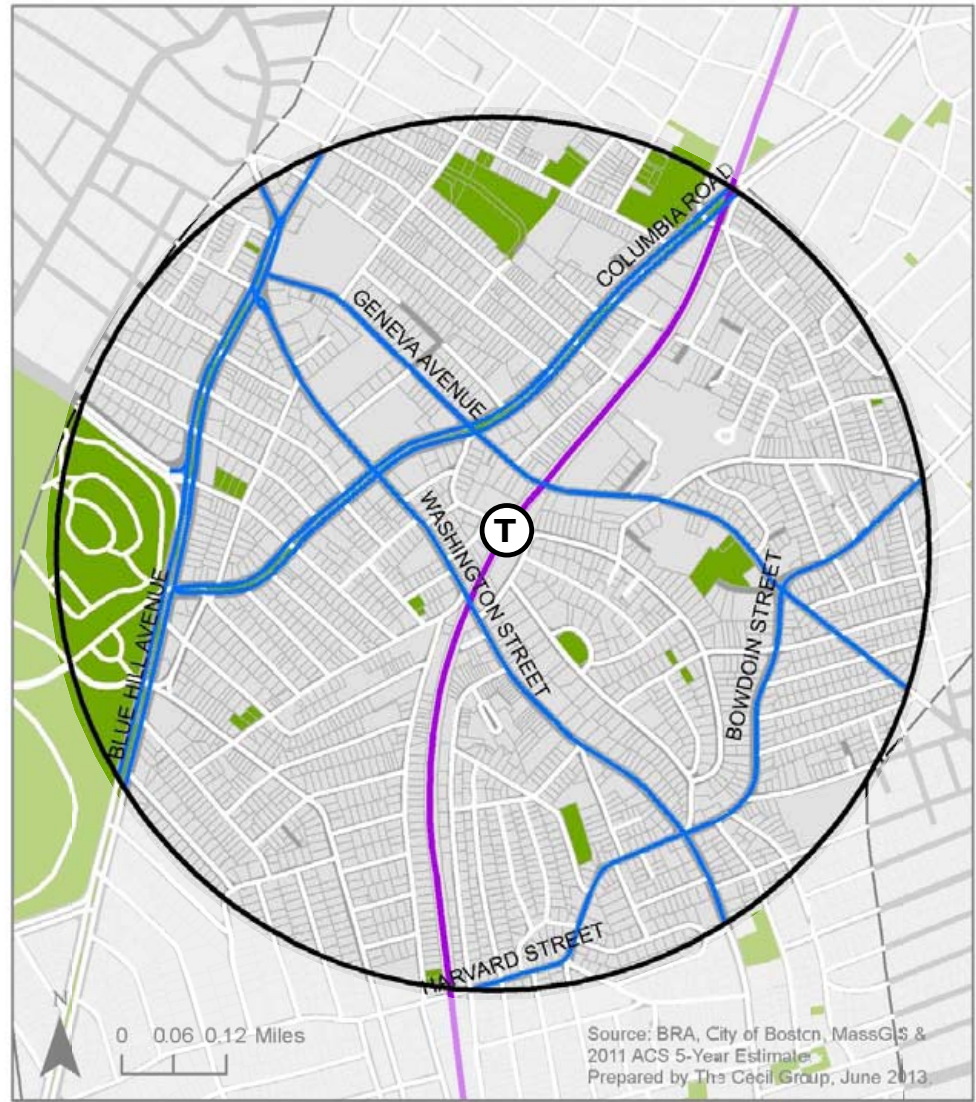
# TRANSPORTATION CONTEXT

## Primary Streets

- Historic center at crossroads of Washington, Bowdoin and Harvard
- Study Area centered on the rail platform between Washington and Geneva
- Columbia Road and Blue Hill Avenue are major connecting streets in the city within the Study Area

### Major Local Streets

-  Major Streets
-  Half Mile Four Corners Geneva Ave
-  Open Space
-  Fairmount Indigo Line



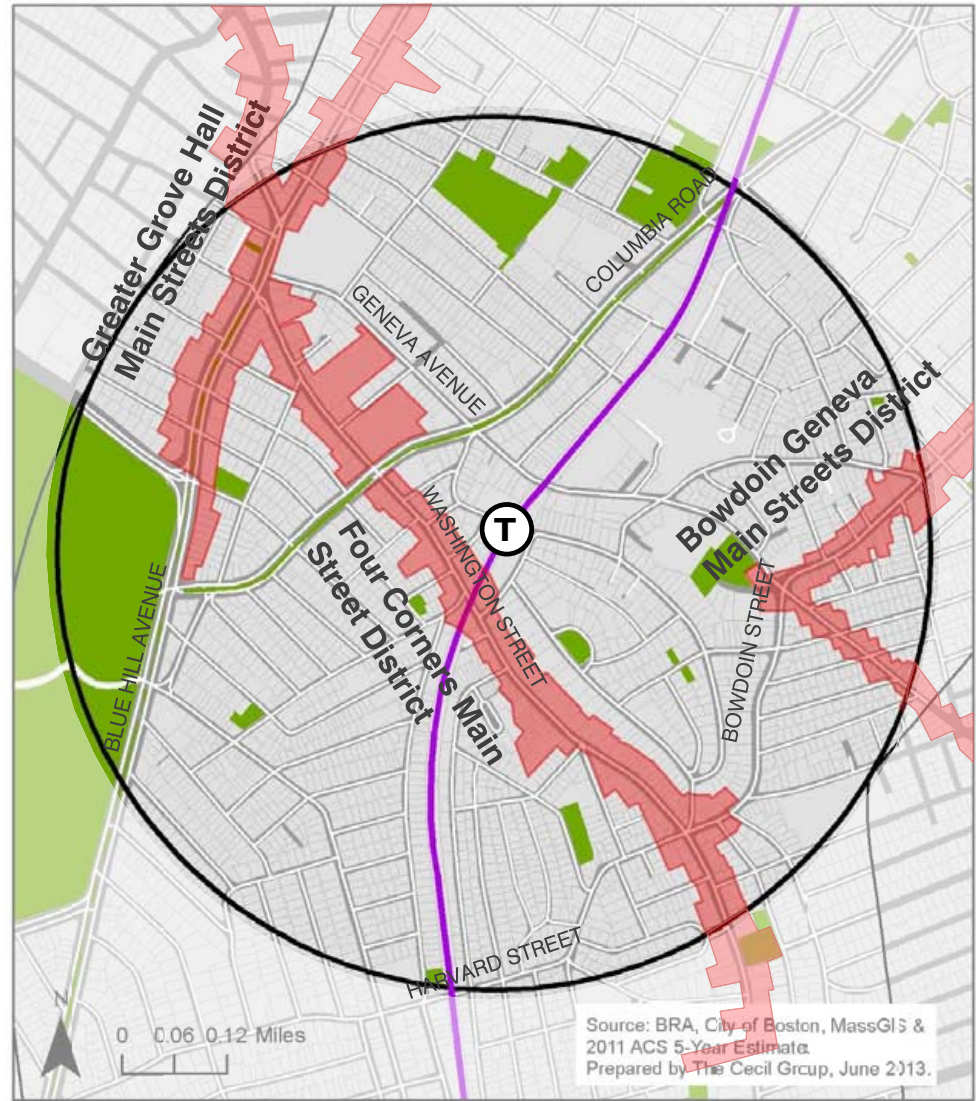
# TRANSPORTATION CONTEXT

## Main Street Boundary

- Study Area includes:
  - Four Corners Main Street District
  - Bowdoin Geneva Main Streets District
  - Greater Grove Hall Main Streets District
- (6) Main Street districts within Fairmount Indigo Corridor

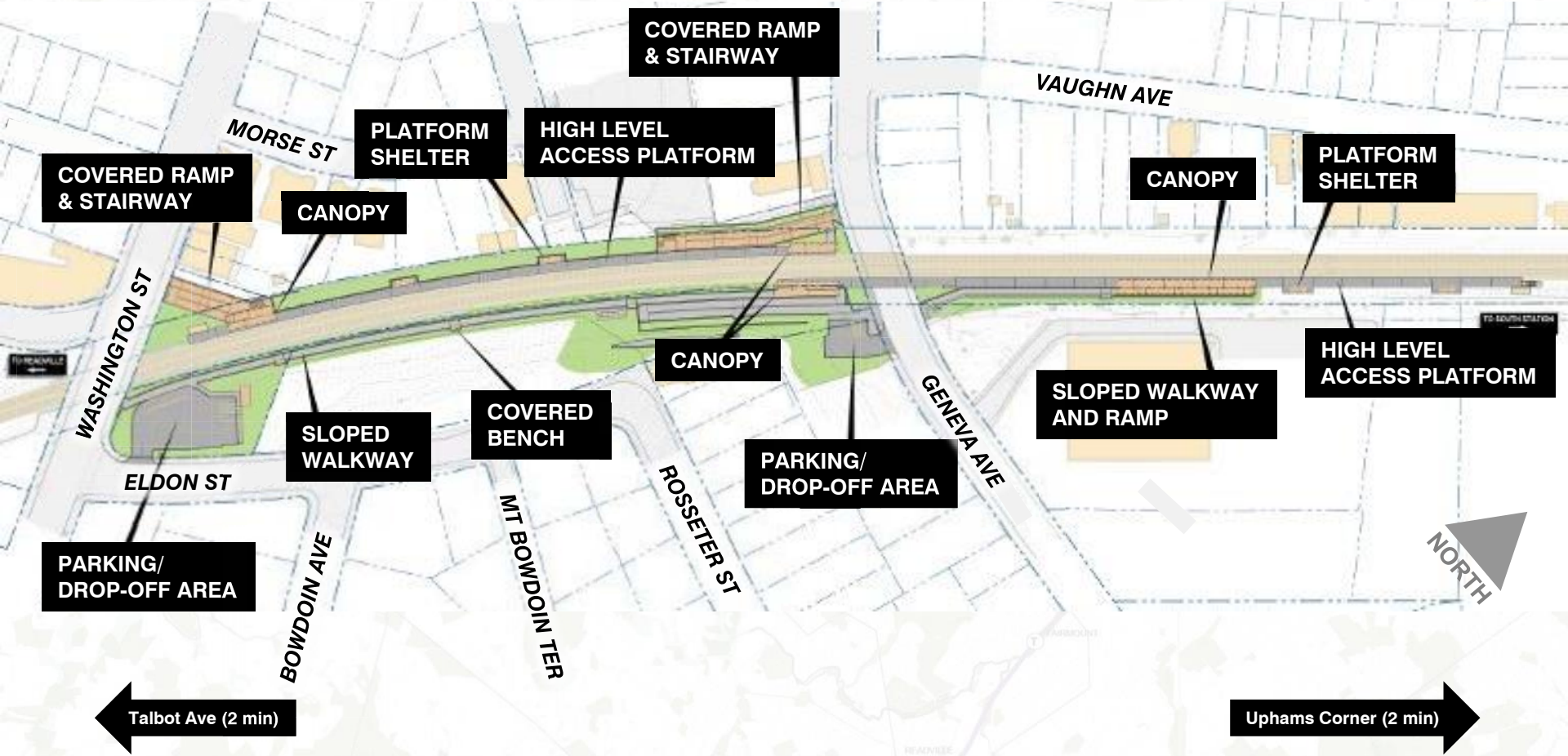
### Main Street Districts

-  Main Street District
-  Fairmount Indigo Line
-  Half Mile Fairmount Corridor
-  Half Mile Four Corners Geneva Ave
-  Open Space



# Four Corners / Geneva Ave Existing Conditions

## Fairmount-Indigo Line – Station Plan





# Four Corners / Geneva Ave Existing Conditions

## Rail Station



**Accessible pick-up/drop-off area  
from (Washington St entrance)C**



**"Coat hanger" style bike rack**



# Four Corners / Geneva Ave Existing Conditions

## Recent Changes



**Dorchester Permit  
Parking near Rail  
Station**



**Tactile ramps for  
crossings**



**Geneva Street  
Re-striping**



**Traffic Signals  
Washington/Erie**

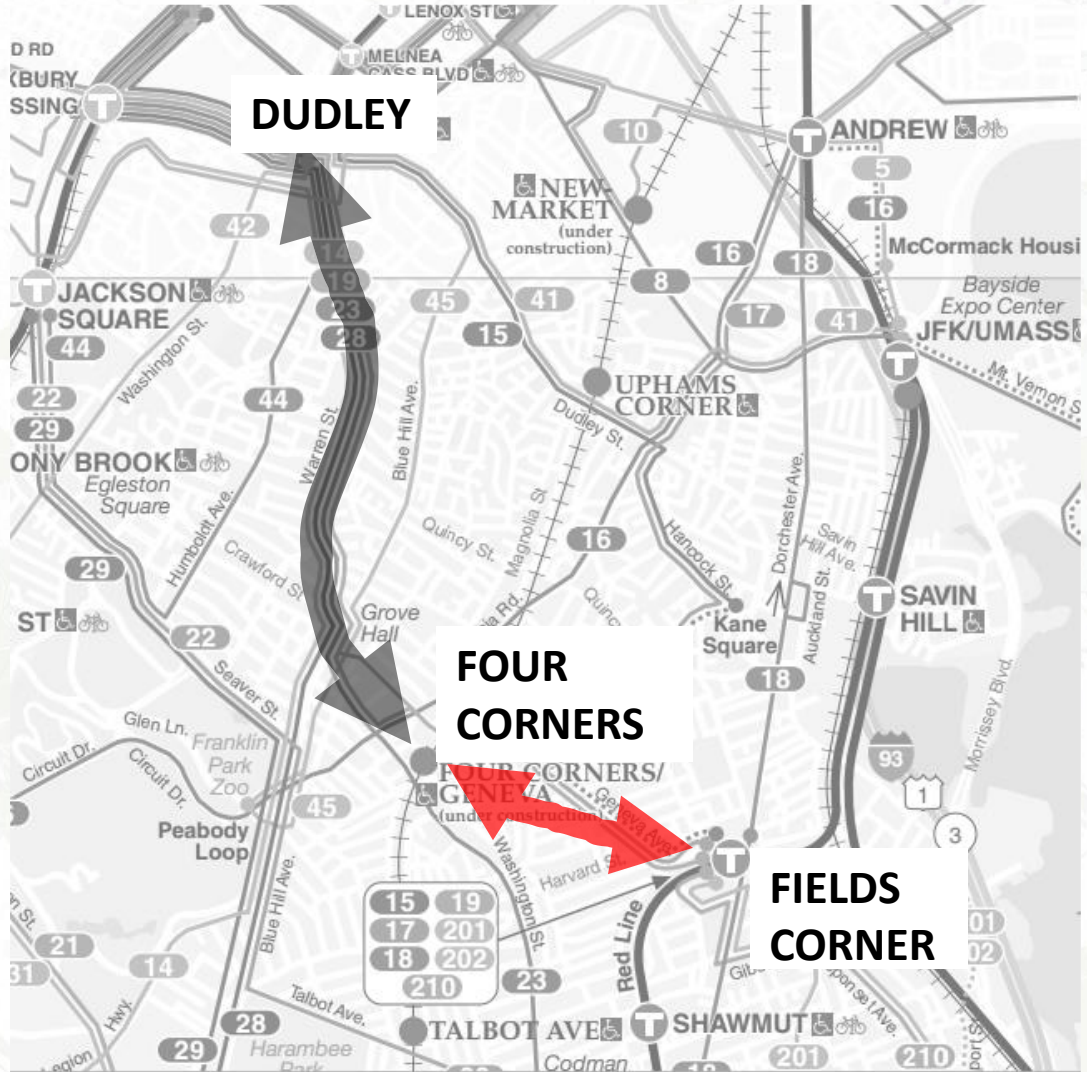


# Four Corners / Geneva Ave Existing Conditions

## Transportation Connections

### Offering connections to:

- Fields Corner (Red Line) –  
5 minutes
- Dudley Square (Silver Line) -  
14 minutes



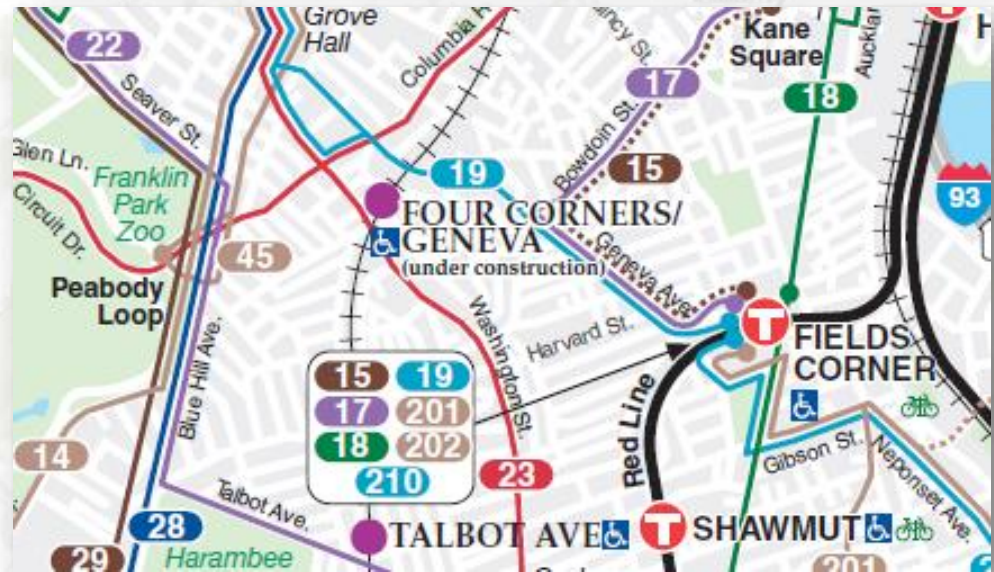
# Four Corners / Geneva Ave Existing Conditions

Bus Connections at Rail Station on Washington St. and Geneva Ave.

**Route 19** Fields Corner <> Ruggles  
approx. 3,400

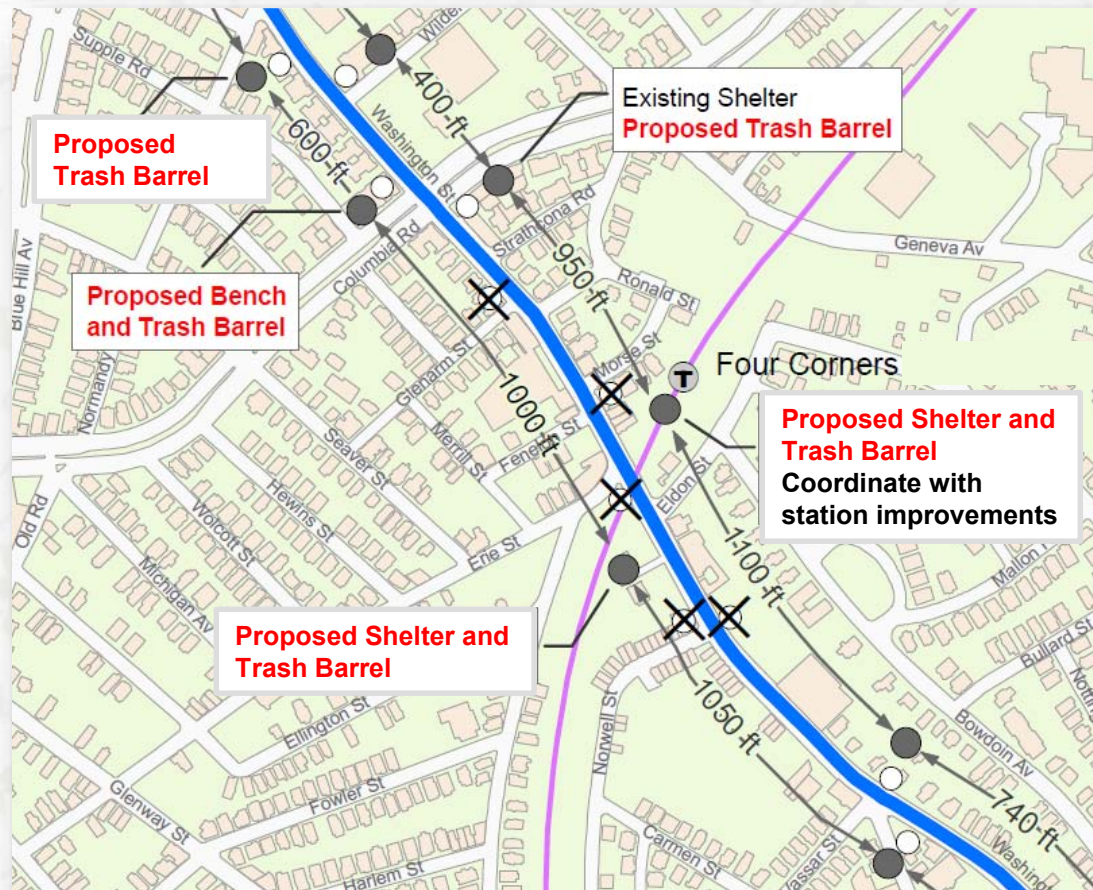
**Route 23** Ashmont <> Ruggles  
approx. 11,100

Many other bus routes serving the  
study area



# Four Corners / Geneva Ave Existing Conditions

## MBTA Key Bus Route Improvement for Routes 23

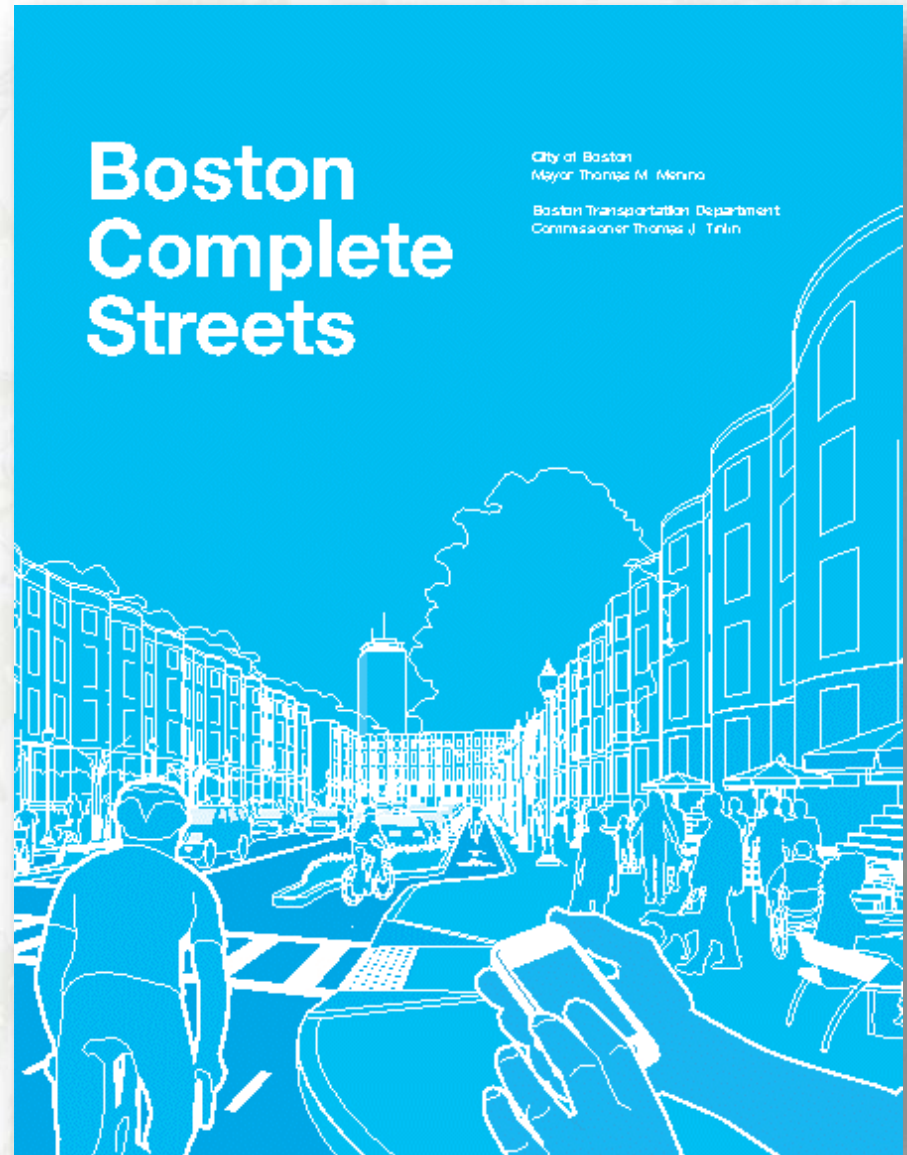


- New inbound and outbound bus stops are located at the station, and existing stops in both directions have been consolidated
- New bus shelters, benches and trash cans have been installed.



## Four Corners / Geneva Ave Complete Streets

- Supportive of safe access by all modes and users of all ages & abilities
- Transportation elements come together to form a complete street
- Key is balancing needs AND facilitating connections between modes

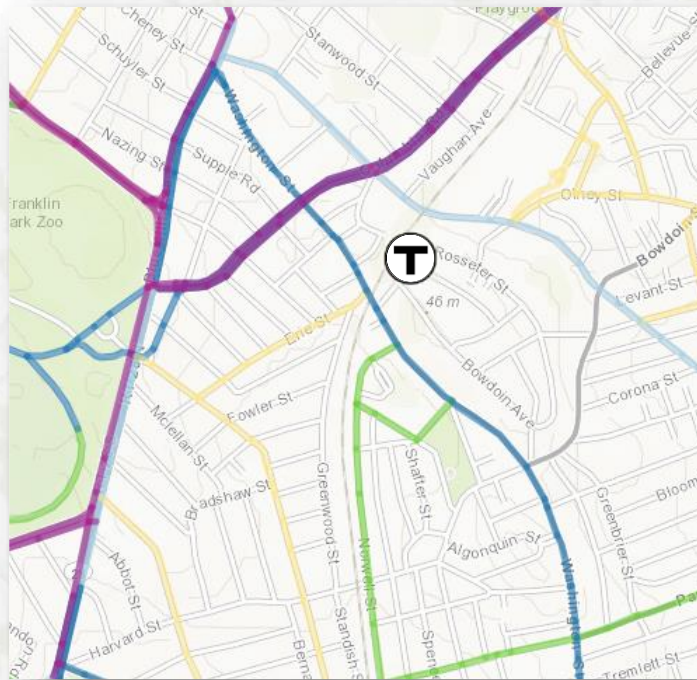


# Four Corners / Geneva Ave Existing Conditions

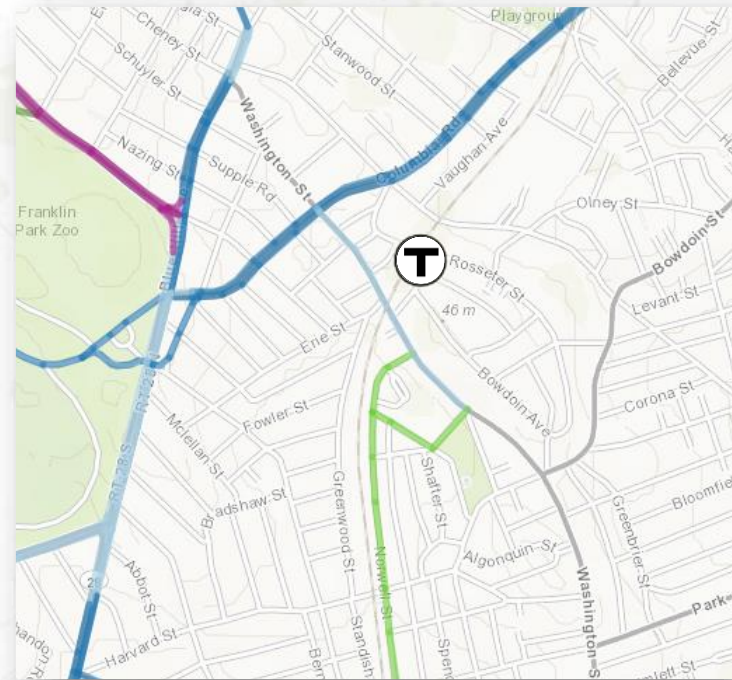
## Bicycle Network Plan

	Recommended Local Route
	Shared Lane
	Shared Road
	Exclusive Lane
	Protected Lane

### 30-Year Vision



### 5-Year Action Plan



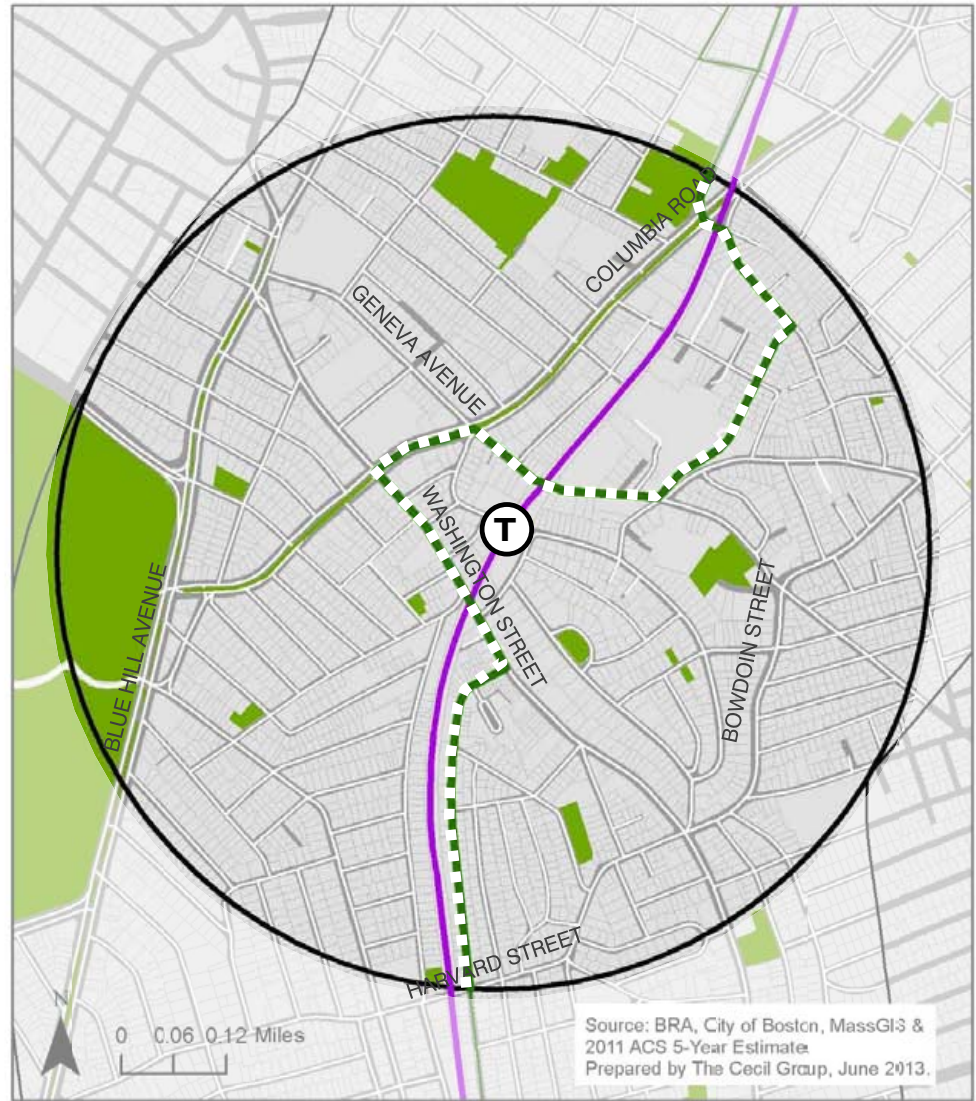
# Four Corners / Geneva Ave Existing Conditions

## Fairmount Greenway

- Greenway proposed route up Vorwell Street, Washington Street, Columbia Road, Geneva Avenue and Olney Street
- Neighborhood loop to Bowdoin/Geneva

### Proposed Fairmount Greenway

-  Proposed Greenway
-  Fairmount Indigo Line
-  Half Mile Four Corners Geneva Ave
-  Open Space

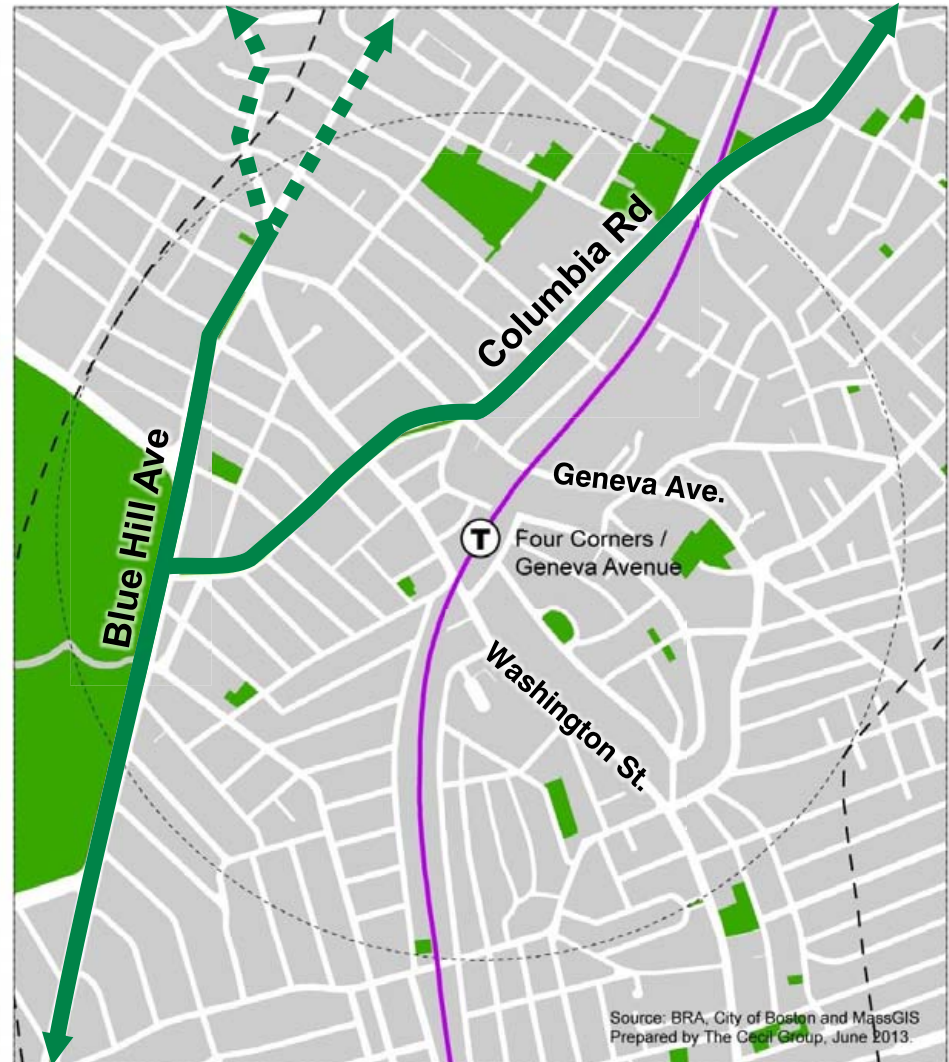




# Four Corners / Geneva Ave Existing Conditions

## Bicycle Network

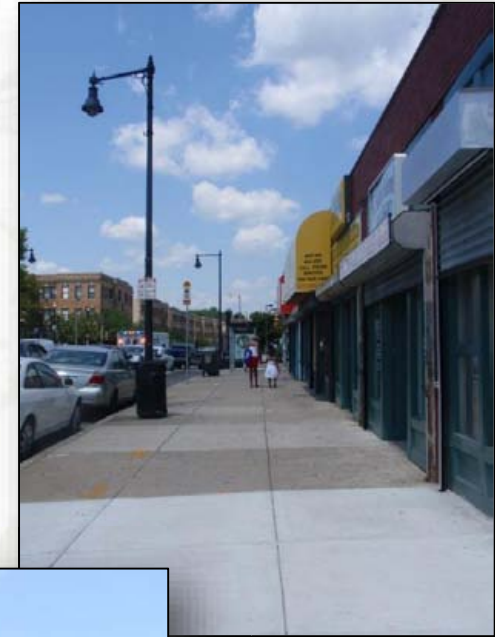
- No accommodations on Washington St. or Geneva Ave.
- Both streets connect to Columbia Rd. bike lanes, and to Blue Hill Ave. bike lanes
- Further to the east, Dorchester Avenue has shared lane markings and provides north-south connections.



# Four Corners / Geneva Ave Existing Conditions

## Pedestrian Network

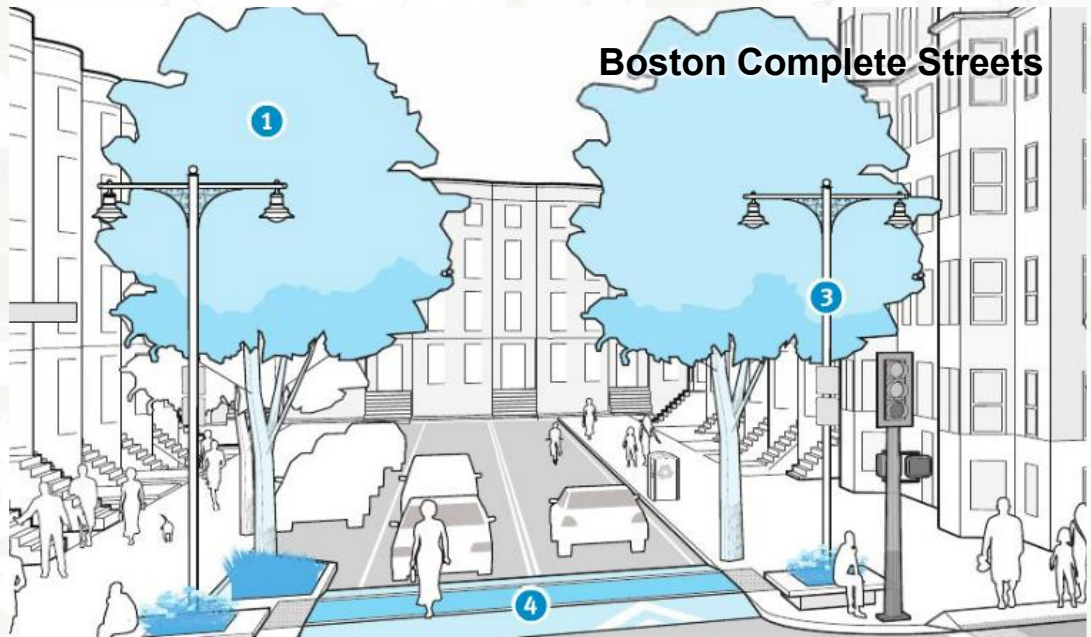
- New sidewalk construction adjacent to Washington Street station entrance.
- Sidewalks on Washington St. are approx. 9 feet wide near station.
- Some new sidewalk construction adjacent to Geneva Street entrance as well. Sidewalks are approx. 8 feet wide.
- New ramps added throughout study area
- Opportunities to enhance pedestrian experience



# Four Corners / Geneva Existing Conditions

## Pedestrian Network Connections

- Crosswalks
- Accessible ramps
- School zones
- Gateways to Main Street Districts

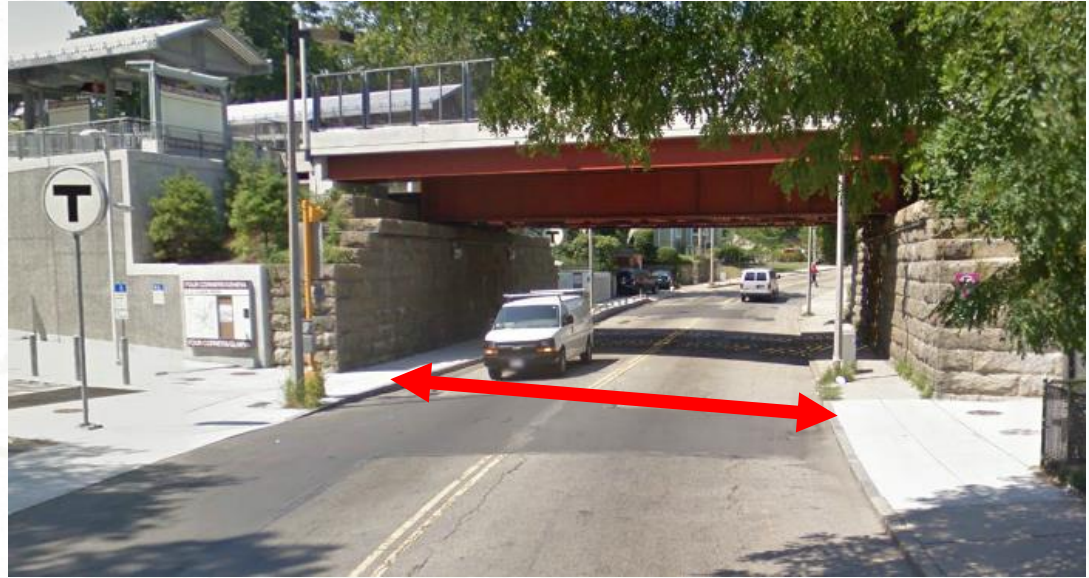


# Four Corners / Geneva Existing Conditions

## Pedestrian Network

### Station Connections

- Crosswalks
- Accessible ramps
- Underpass treatments



# Four Corners / Geneva Existing Conditions

## Pedestrian Network

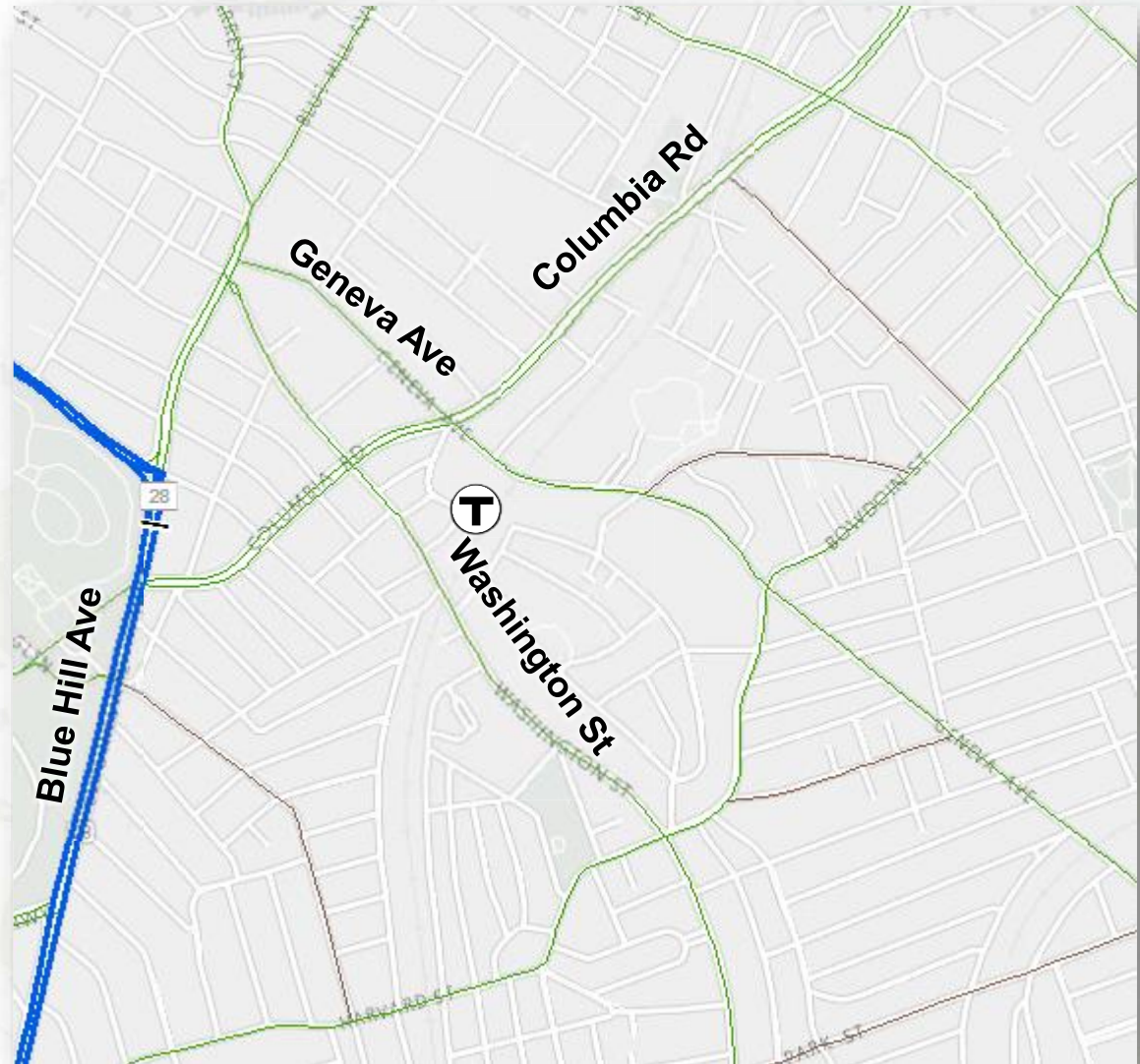
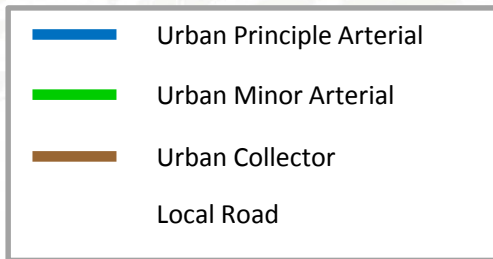
### Barriers

- Multiple large intersections within study area
- Long crosswalks
- Large curves promote higher vehicle speeds



# Four Corners / Geneva Ave Existing Conditions

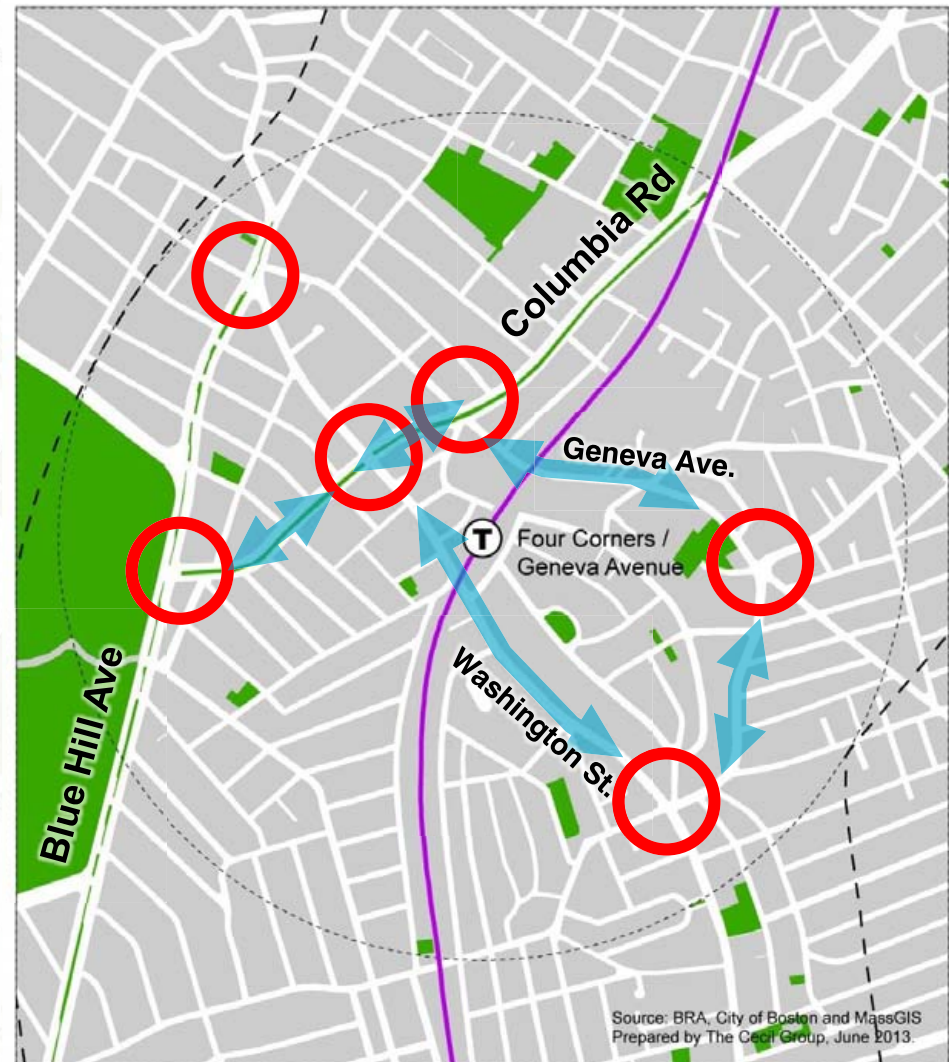
## Vehicle Network



# Four Corners / Geneva Complete Streets

## Key Intersections & Connections

- Blue Hill Ave / Washington Street
- Columbia Rd / Blue Hill Avenue
- Columbia Rd / Washington Street
- Columbia Rd / Geneva Avenue
- Washington St / Bowdoin Street
- Geneva Ave / Bowdoin Street



# Four Corners / Geneva Ave Existing Conditions

## Vehicle Network

- Washington St. has one travel lane in each direction, with parking on both sides of the street (approx. 40 feet curb-to-curb width).
- Geneva Ave. has one travel lane in each direction, with parking on one side of the street (approx. 32 feet curb-to-curb-width)
- Columbia Road has two travel lanes in each direction, with parking and bicycle lane.





# Four Corners / Geneva Ave Existing Conditions

## Washington Street Existing Cross-Section



**\*Dimensions are approximate**



# Four Corners / Geneva Ave Existing Conditions

## Geneva Avenue Existing Cross-Section



**\*Dimensions are approximate**



# Four Corners / Geneva Existing Conditions

## Bowdoin Street Existing Cross-Section



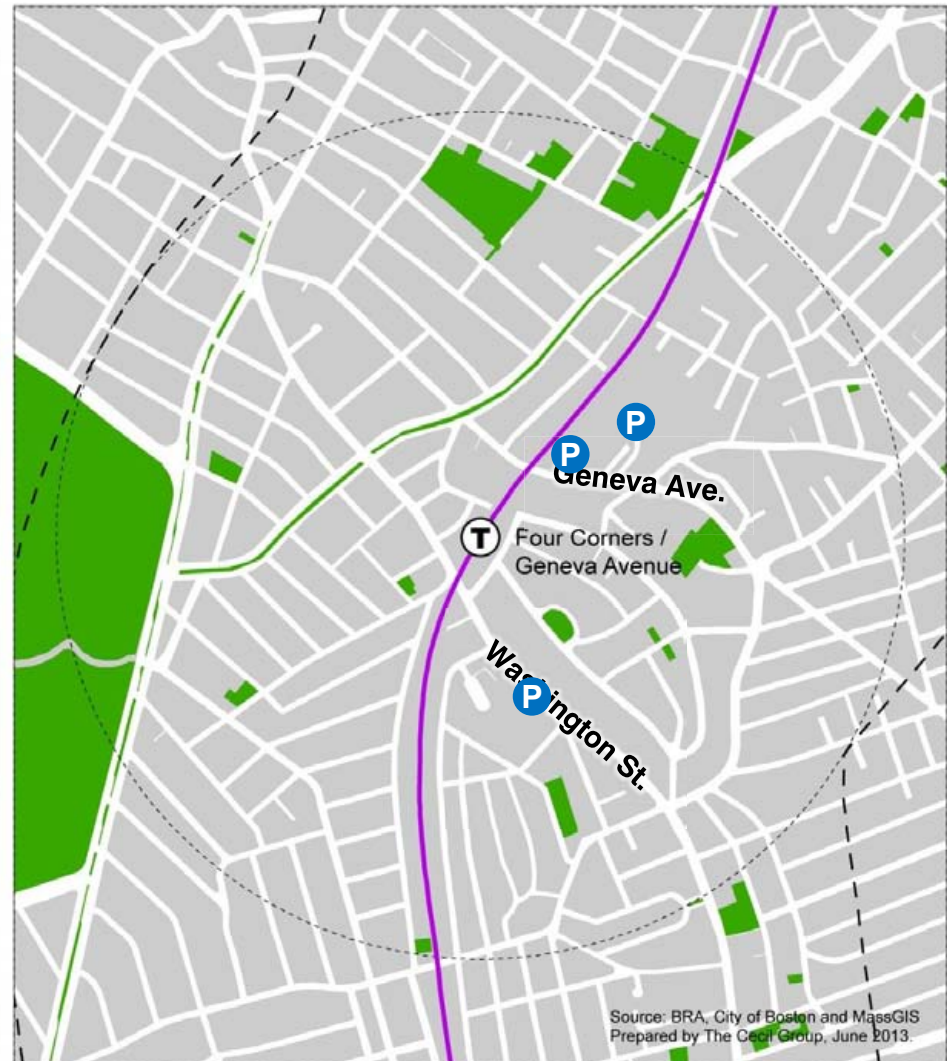
**\*Dimensions are approximate**



# Four Corners / Geneva Ave Existing Conditions

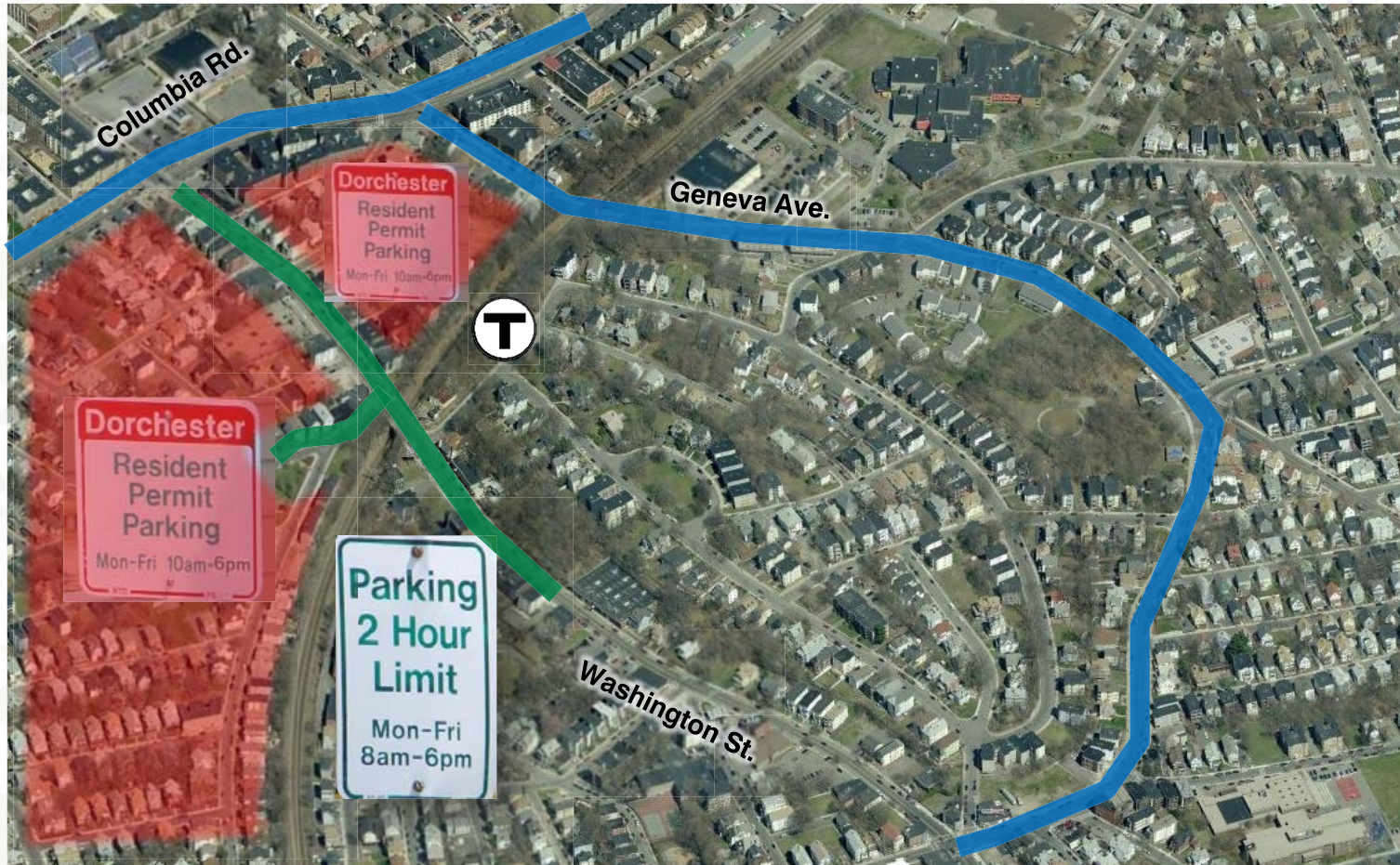
## On- and Off-Street Parking

- On-street parking along Washington St. and in front of businesses on Eldon St. is 2 hour limit
- On-street parking on Geneva Ave. is mostly unregulated.
- Some neighborhood permit parking is by Dorchester Permit. There is limited off-street parking at residences.
- Surface parking lots concentrated south on Washington St., and with Head Start and Holland School off of Geneva Ave.



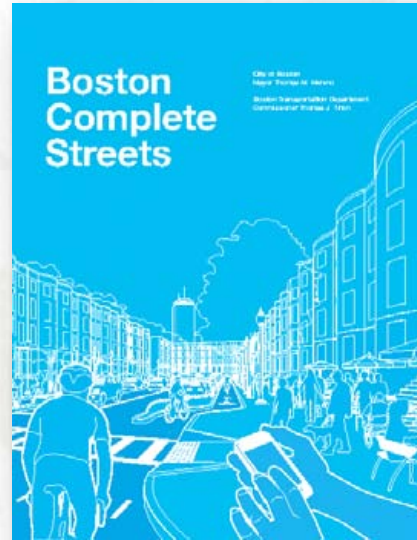
# Four Corners / Geneva Ave Existing Conditions On-Street Parking

- Unregulated Parking
- Two-Hour Parking
- Dorchester Resident Parking (New April 2014)



# Four Corners / Geneva Ave Existing Conditions

## Discussion – Areas of Focus



**Bus**



**Bicycle**



**Rail**



**Pedestrian**



**Parking**



Four Corners/Geneva Ave. Working Advisory Group (WAG)

# DISCUSSION



Four Corners/Geneva Ave. Working Advisory Group (WAG)

# COMMUNITY FORUM PREP





# COMMUNITY FORUM

## Preparation Topics

### 1. Forum Purpose

### 2. Outreach

Flyers

WAG, CDC, Neighborhood Group promotion

### 3. Forum Logistics and Exercises

### 4. WAG Participation

Co-chair Welcome

Break-out group WAG leaders

### 5. POTENTIAL DATES:

11/3, 11/4 or 11/5



# Visioning Forum Purpose

1. Inform the community of the Fairmount Indigo Corridor and the FIPI study to create an awareness of the rail station and current service
2. Identify and better understand main issues and opportunities in the station area
3. Create a shared community vision for the future



# Visioning Forum Outreach

## Flyers and Promotion

AS PART OF THE FAIRMOUNT INDIGO PLANNING INITIATIVE  
**MAYOR THOMAS M. MENINO INVITES YOU TO THE**  
**BLUE HILL AVE/CUMMINS HWY  
COMMUNITY VISIONING**  
BUILDING NEW CONNECTIONS TO YOUR NEIGHBORHOOD

**Thursday, December 5, 2013  
5:30pm–8:00pm**

Please join us in the conversation about developing a short and long term strategy for economic, development, jobs, transit and housing centered around the MBTA Blue Hill Ave/ Cummins Hwy Fairmount Line station.

★ Light Refreshments ★  
**Mattapan Library  
1350 Blue Hill Avenue  
Mattapan, MA 02126**

★ Interpretation services available upon request



**fairmountindigo.org  
617.918.4431**




AS PART OF THE FAIRMOUNT INDIGO PLANNING INITIATIVE  
**MAYOR THOMAS M. MENINO INVITES YOU TO THE**  
**BLUE HILL AVE/CUMMINS HWY  
COMMUNITY VISIONING**  
BUILDING NEW CONNECTIONS TO YOUR NEIGHBORHOOD

**Thursday, December 5, 2013  
5:30pm–8:00pm**


Please join us in the conversation about developing a short and long term strategy for economic, development, jobs, transit and housing centered around the MBTA Blue Hill Ave/ Cummins Hwy Fairmount Line station.

★ Light Refreshments ★  
**Mattapan Library  
1350 Blue Hill Avenue  
Mattapan, MA 02126**

★ Interpretation services available upon request



**fairmountindigo.org  
617.918.4431**



# Visioning Forum Logistics

## Agenda of the Evening Forum

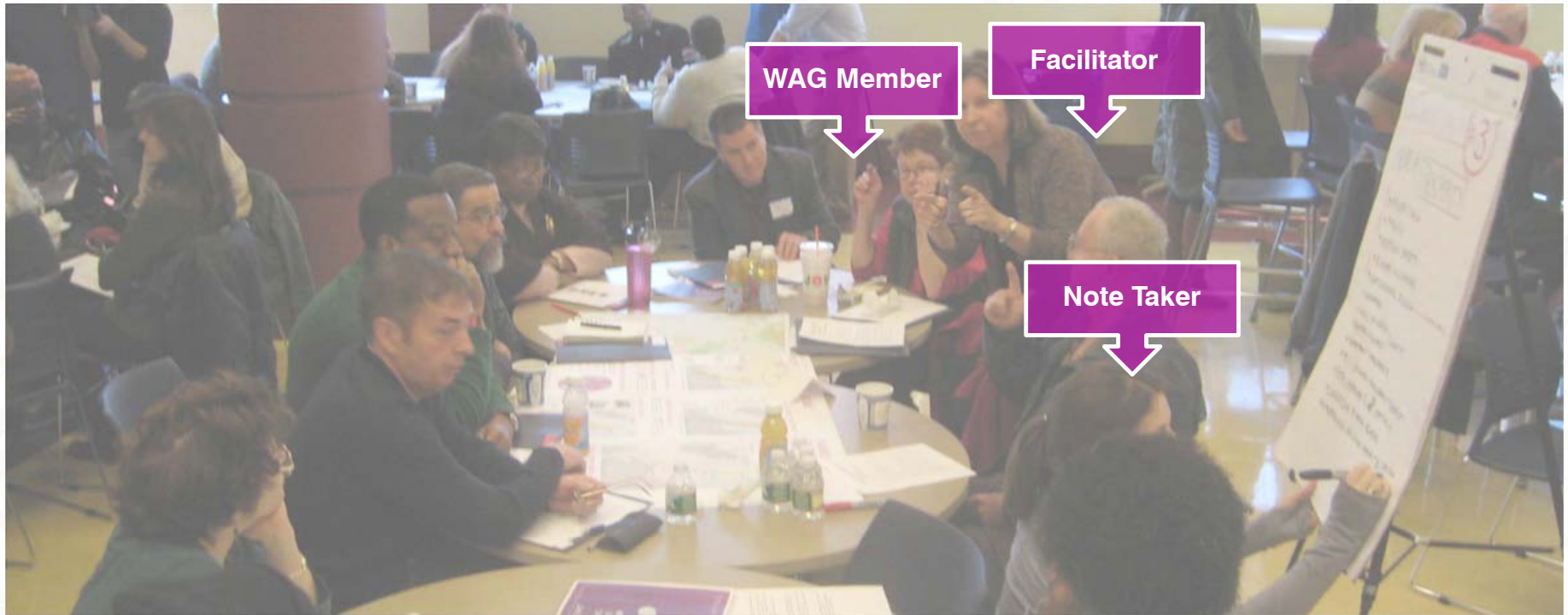
1. Sign-in and Welcome (5:30-6:00pm)
2. Introductory Presentation (6:00-6:30pm)
3. Break-out Session 1 – Station Area Issues and Opportunities (6:30-7:00pm)
4. Break-out Session 2 – Shared Vision and Priorities (7:00-7:45pm)
5. Forum Concluding Remarks (7:45-8:00pm)



# WAG Participation

1. Co-Chair Welcome
2. WAG Member Liaisons

Distributed in break-out groups





# Visioning Forum Logistics

## Logistics of the Evening

### 1. Introductory Presentation

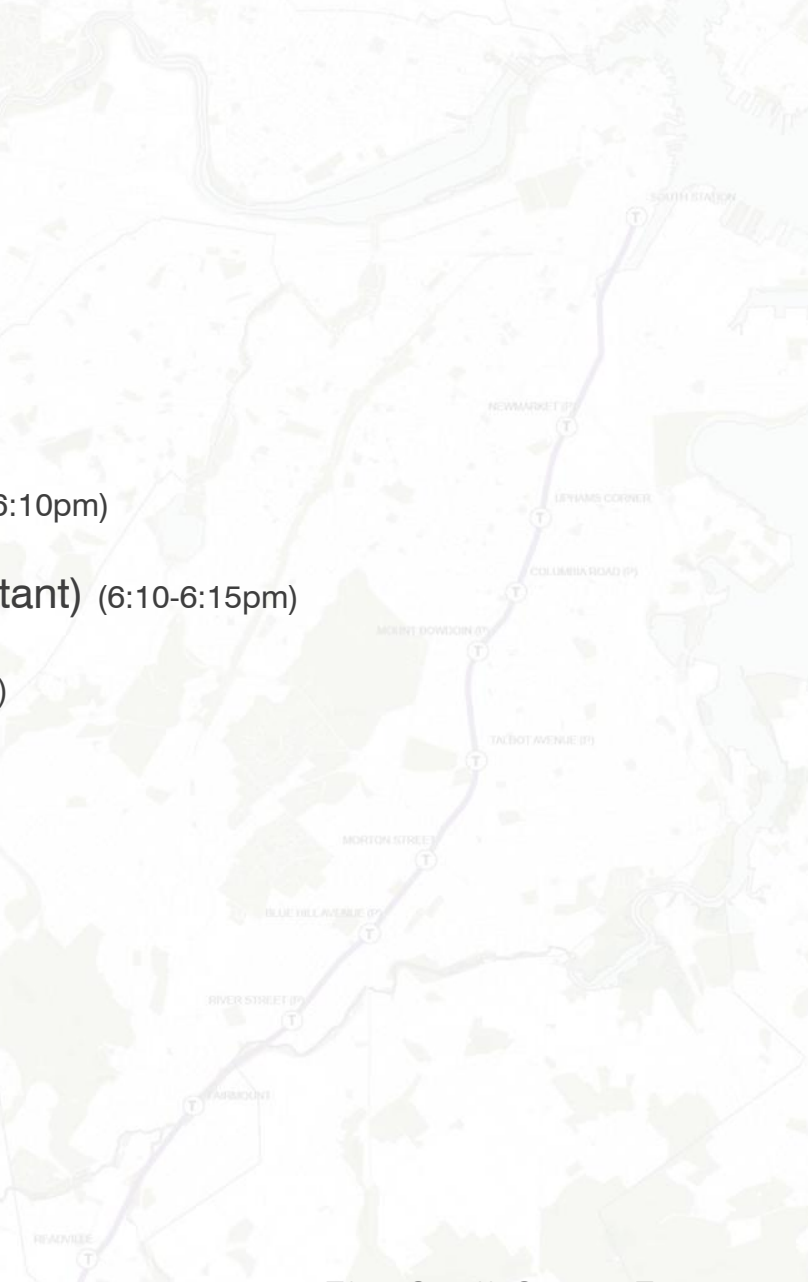
Co-chair Welcome (6:00-6:05pm)

Forum Agenda, Objectives (Co-Chairs) (6:05-6:10pm)

Overview of FIPI Study and Process (Consultant) (6:10-6:15pm)

Station Area Context (Consultant) (6:15-6:30pm)

- Overview of Station Area Geography
- Brief Photo Tour of Station Area
- Break-out Group Instructions



# Visioning Forum Logistics

## Logistics of the Evening

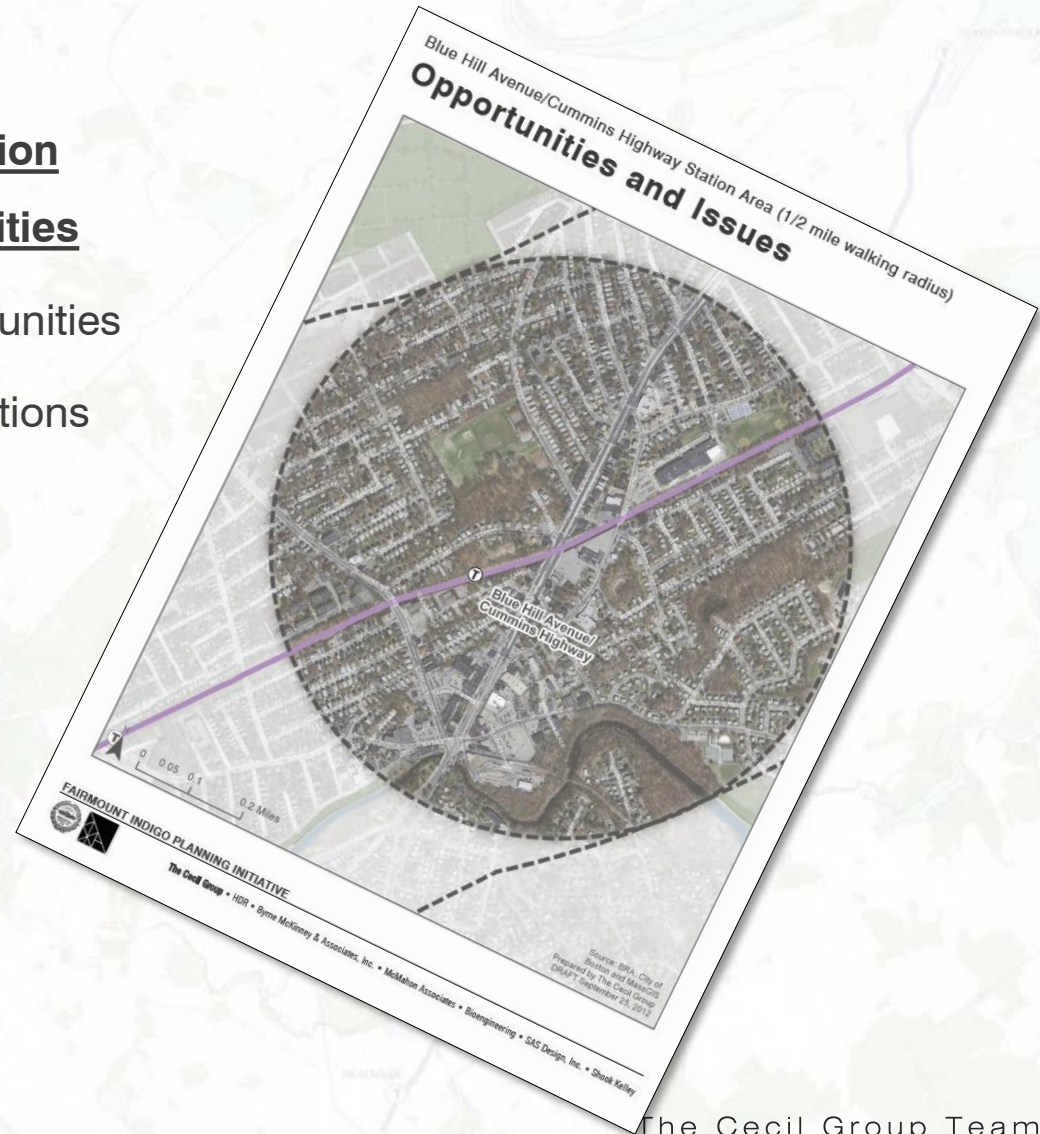
### 1. Break-out Session 1 – Station Area Issues and Opportunities

Mapping Issues and Opportunities

Facilitator Guides with Questions

Marking on the Base Map

Report Back





# Visioning Forum Logistics

## Logistics of the Evening

### 1. Break-out Session 2 – Shared Vision and Priorities

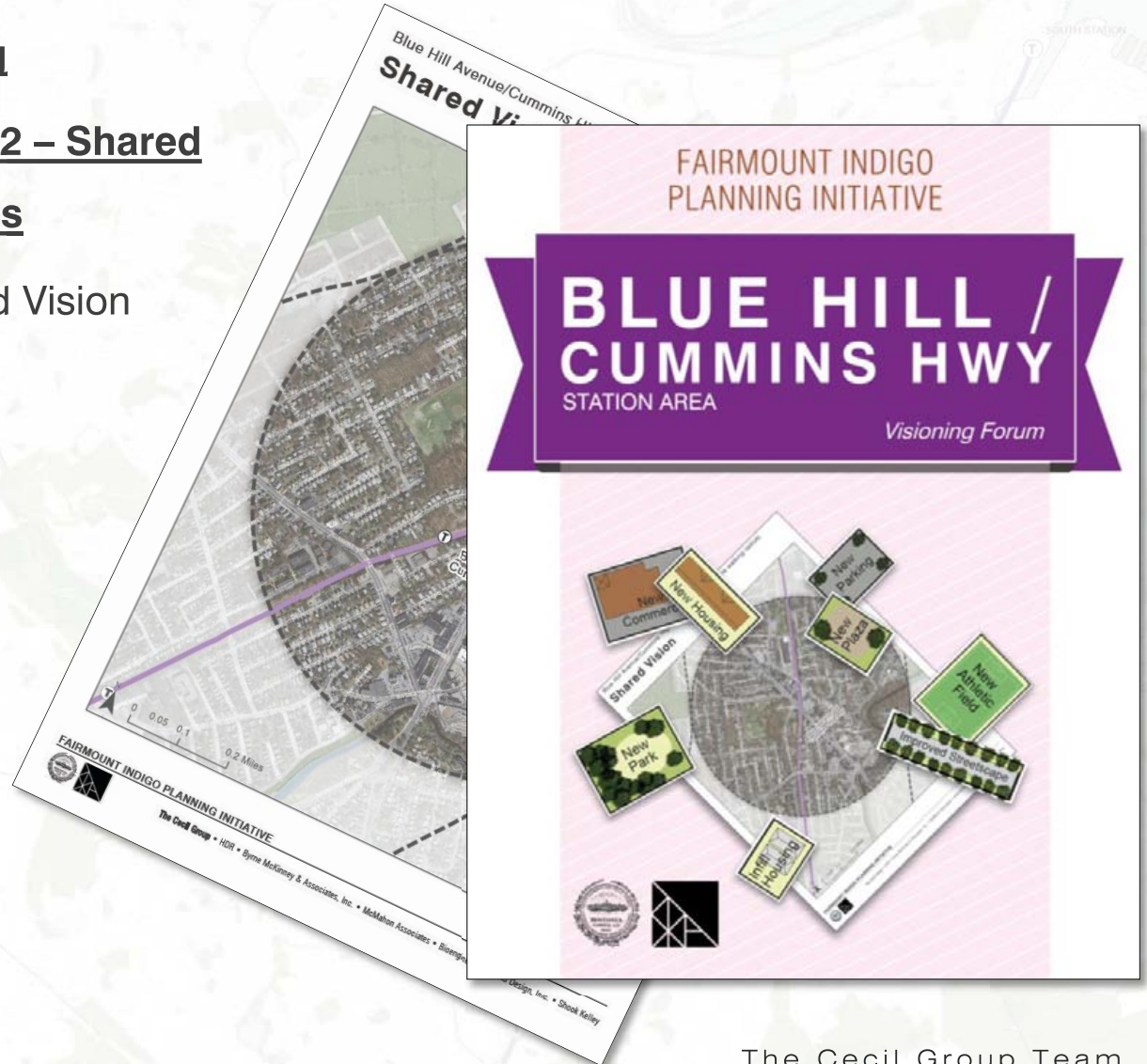
Station Area Shared Vision

Facilitator Guide

“Game Pieces”

Priorities

Report Back



# NEXT STEPS

## Meeting Agendas:

### Community Forum October

1. Introduction
2. Virtual Station Area Tour
3. Break-out Group Discussion 1
4. Break-out Group Discussion 2
5. Concluding Presentation
6. Next Steps

### Youth Visioning Workshop

### November 1<sup>st</sup> (tentative) –

### St. Peter's Youth Forum

### WAG November

1. Introductions, Roles and Rules
2. Community Visioning Results
3. Discussion
4. Priorities, Key Sites and Public Realm
5. Discussion
6. Next Steps

### WAG December

1. Introductions, Roles and Rules
2. Key Sites and Context
3. Development Scenarios and Feasibility
4. Urban Design and Zoning
5. Discussion
6. Next Steps





# Fairmount Indigo Planning Initiative

## Four Corners / Geneva Avenue Working Advisory Group

### (WAG) Meeting #2

September 23, 2014  
6:00 – 8:00 PM

Location: TBD

*Prepared by:*

**The Cecil Group Team**  
The Cecil Group  
HDR Engineering, Inc.  
Byrne McKinney & Associates, Inc.  
McMahon Associates  
Bioengineering  
SAS Design, Inc.  
Shook Kelley

