



HYDE PARK

Neighborhood Strategic Plan

**Advisory Group Meeting
29 September 2009**



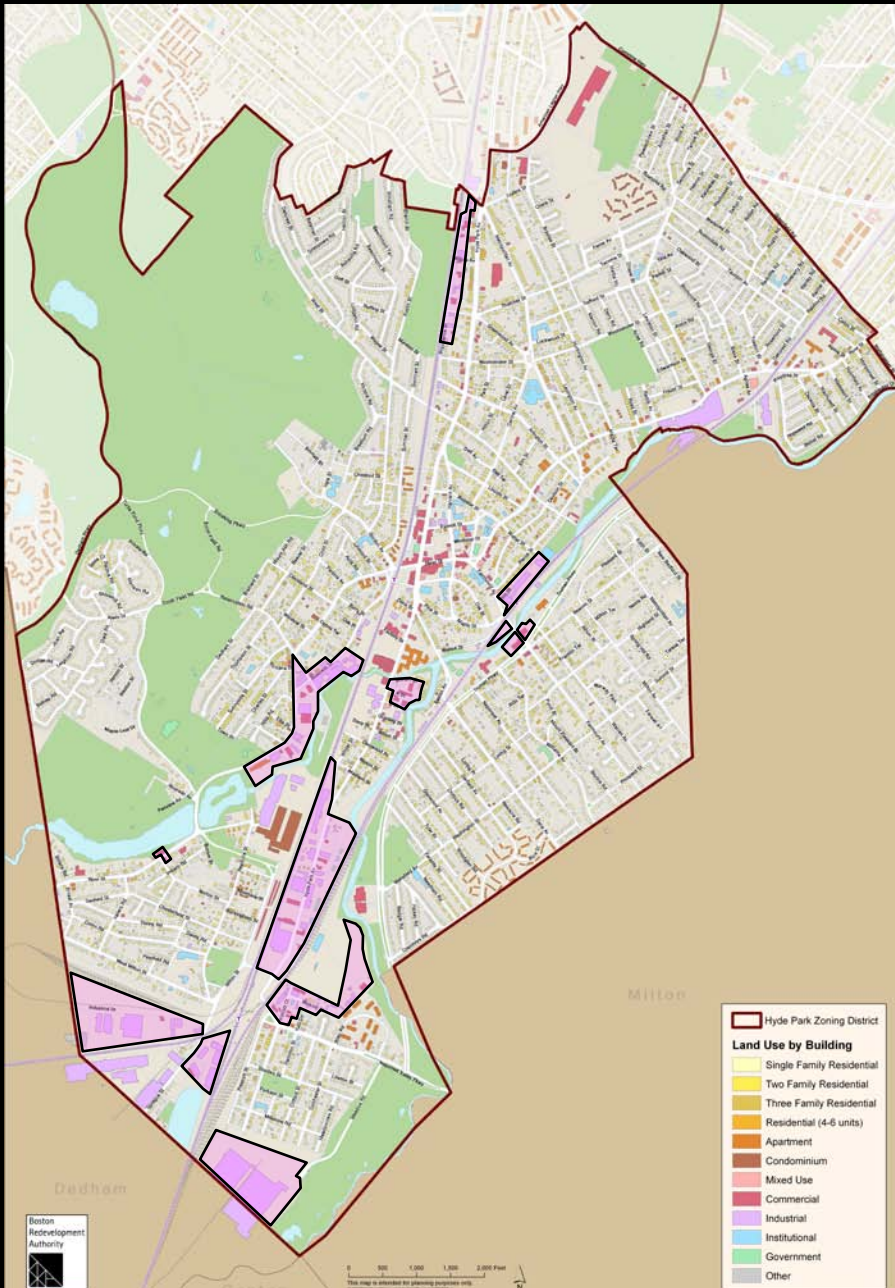
City of Boston
Thomas F. Menino
Mayor



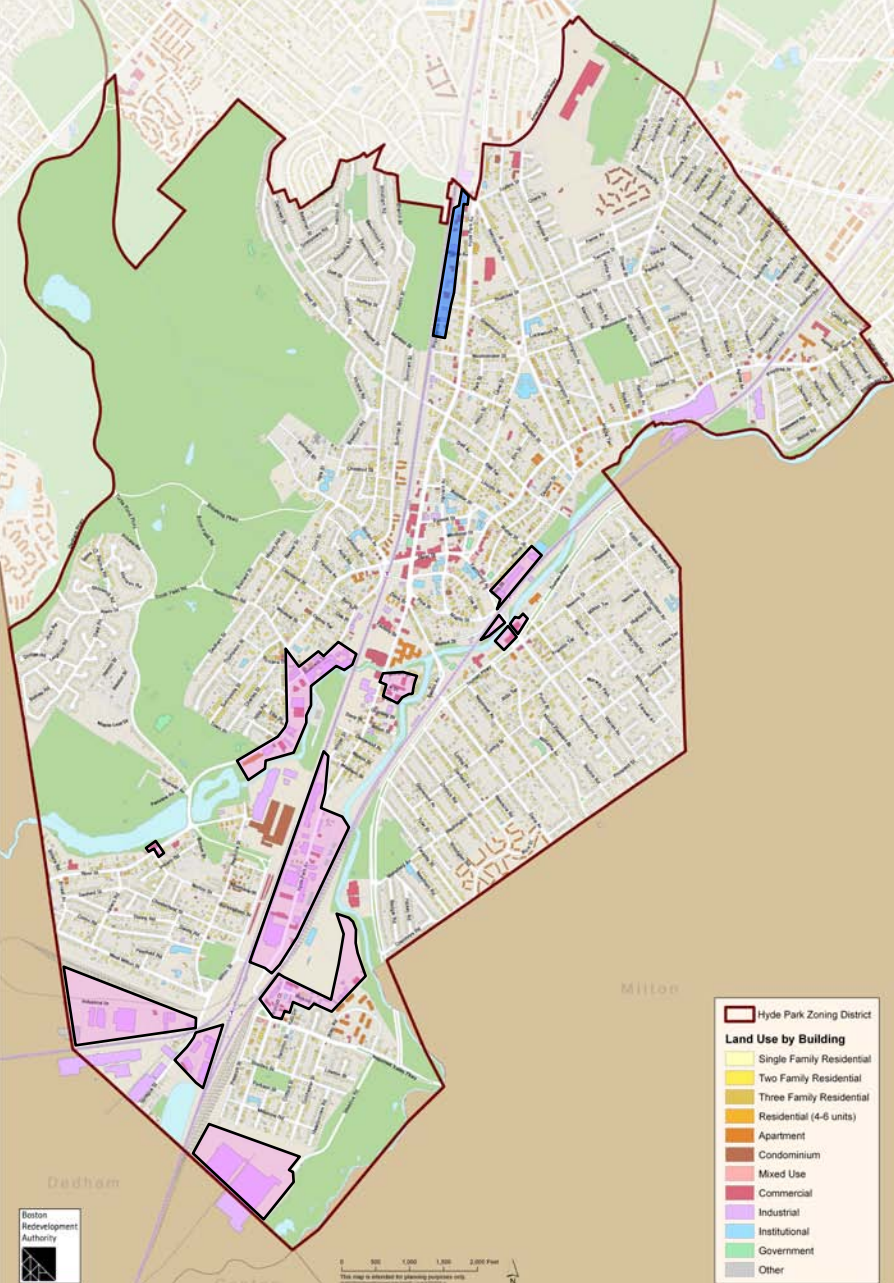
Potential Areas for Further Study

- Possible Actions
- Leave As Is
- Develop Conceptual Plans
- Recommend Zoning Change
- Develop Design Requirements
- Recommend Public Improvements

Potential Areas for Further Study



Providence Street



Providence Street



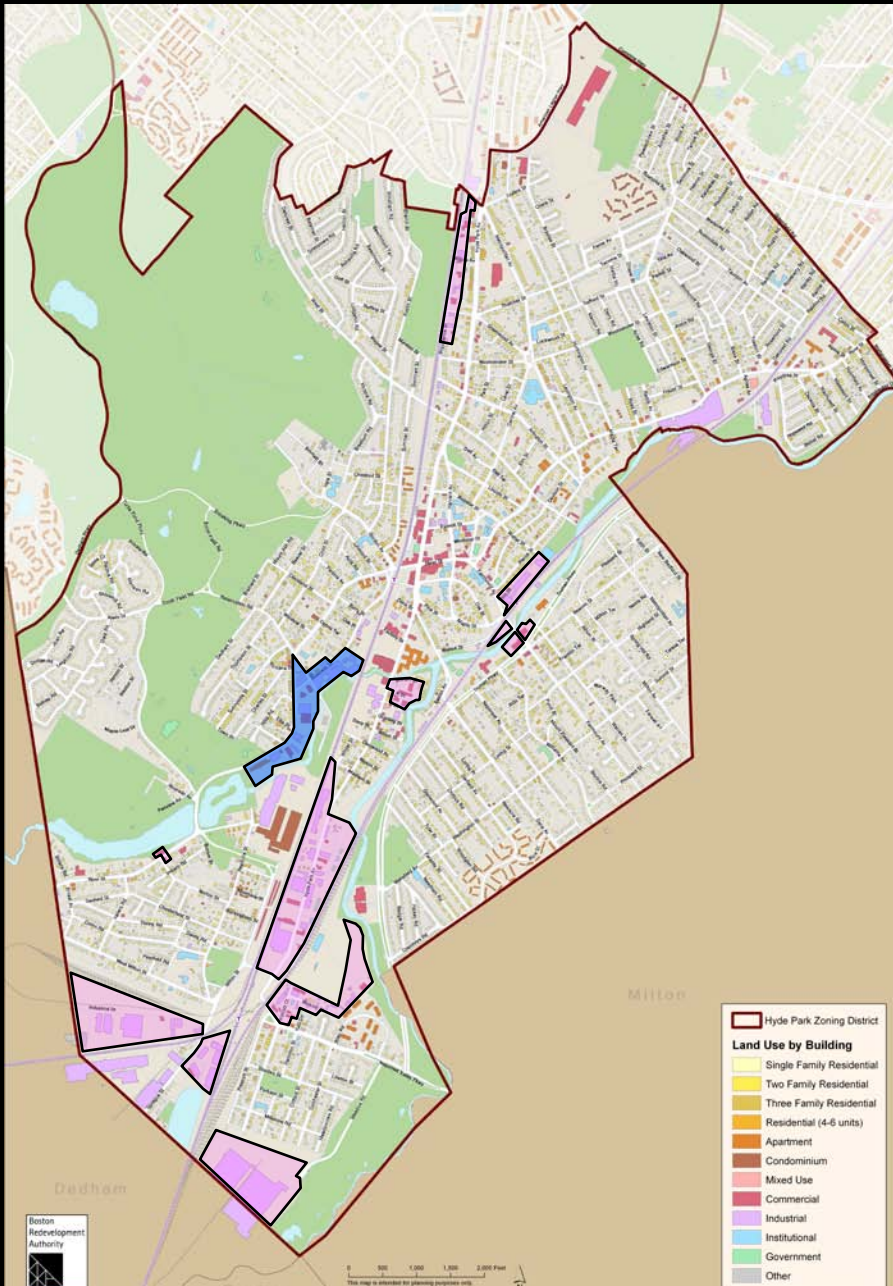








Business / River Streets

















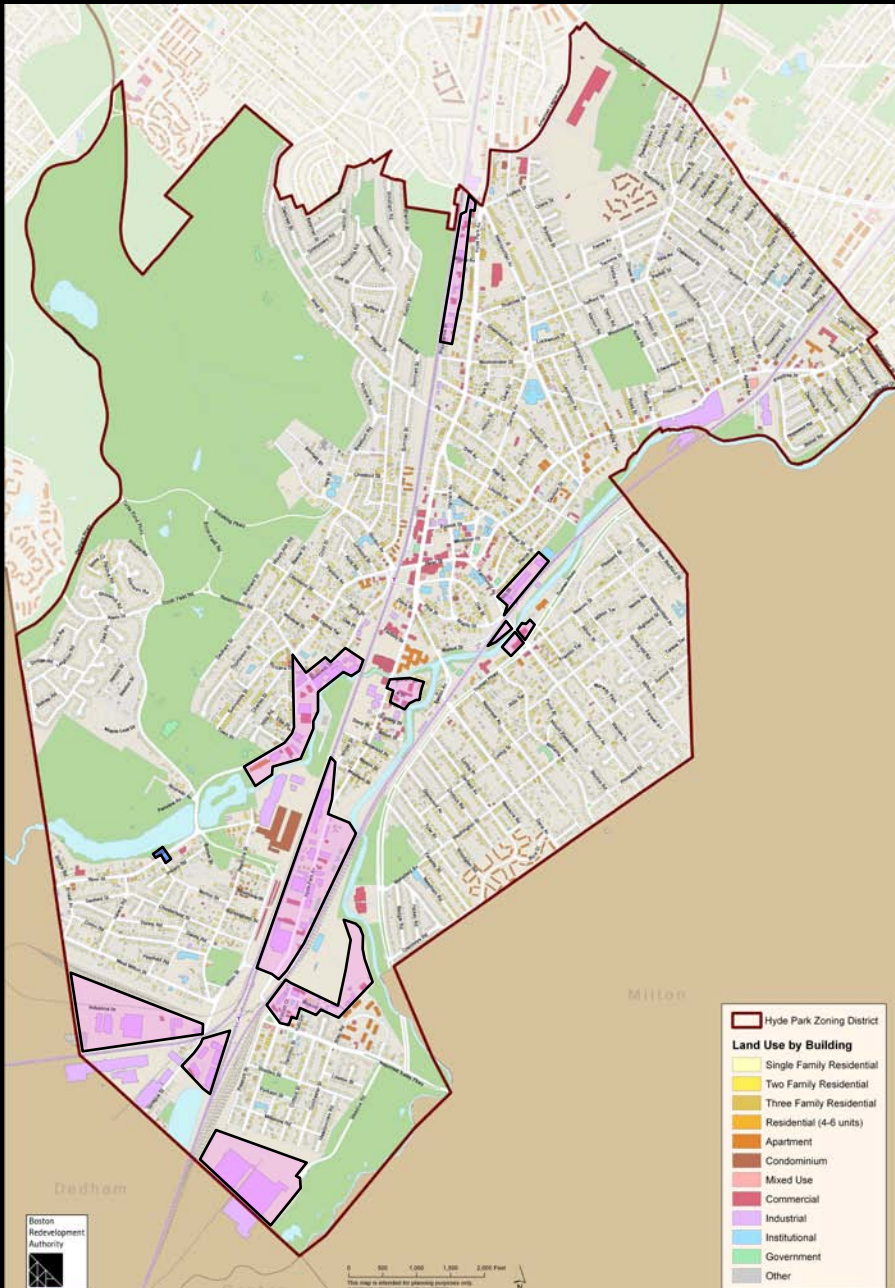








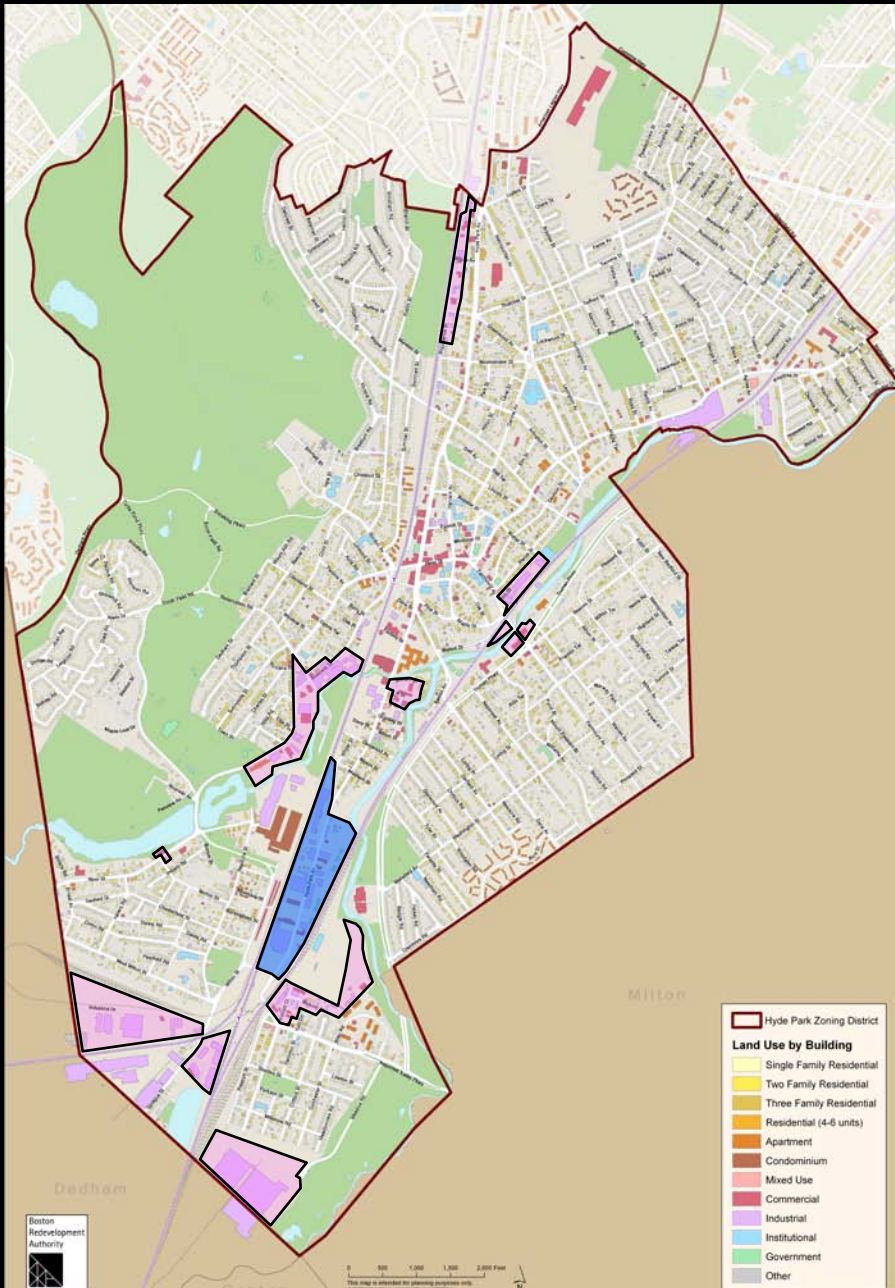
River Street (South)







Hyde Park Avenue











Anderson's
AUTO SERVICE
Service • Repairs
BRAKES TUNE-UPS SHOCKS
4 WHEEL COMPUTERIZED ALIGNMENT















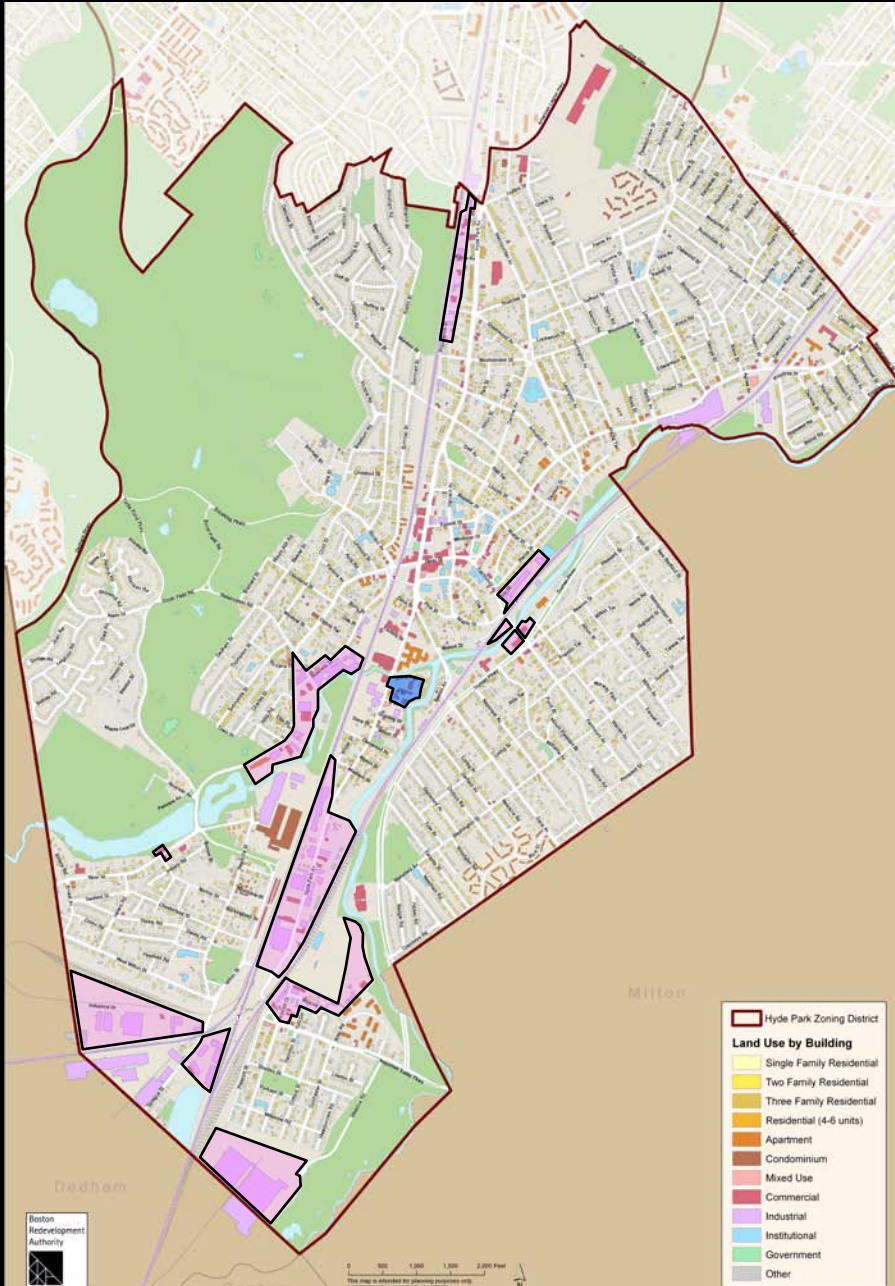








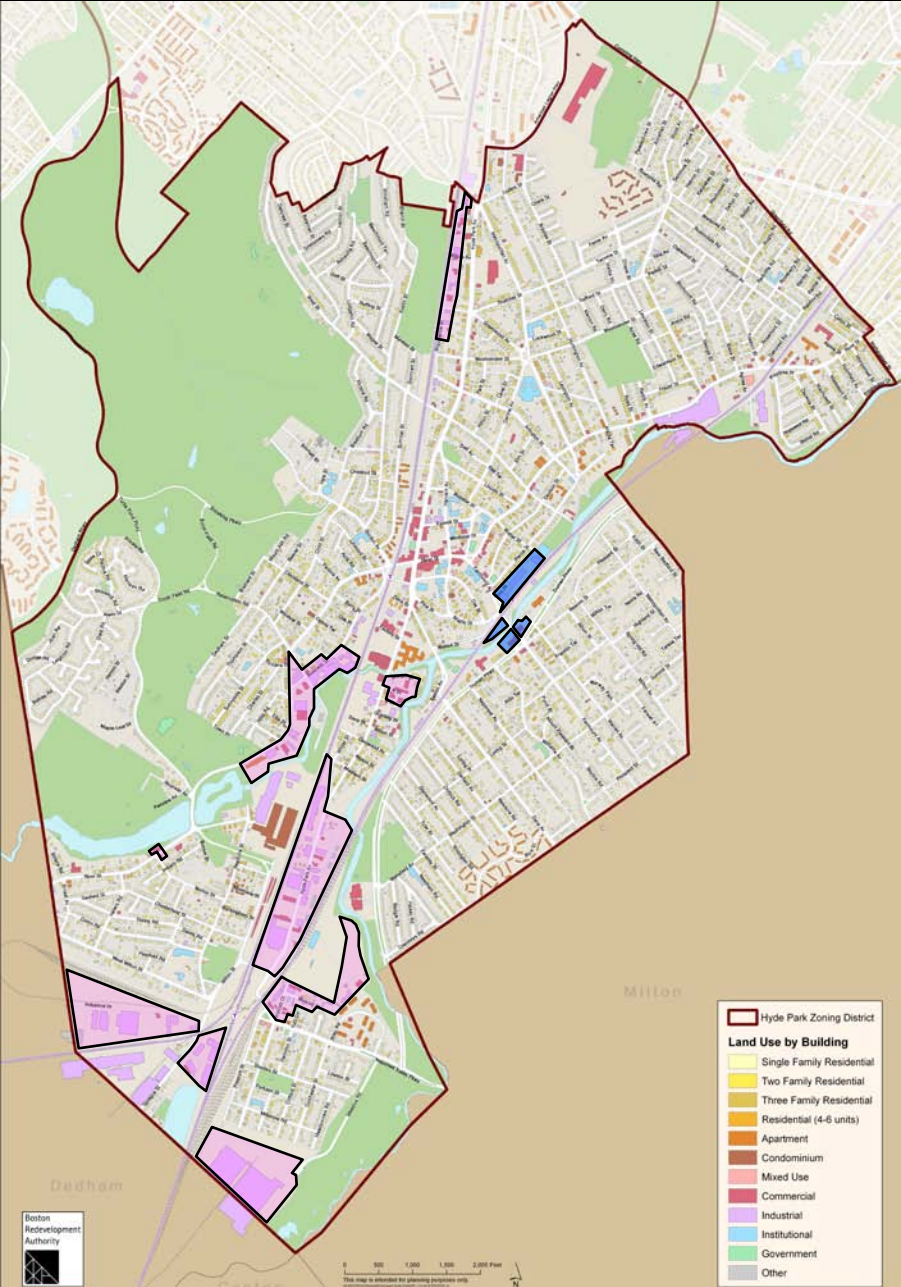
A Street







Fairmount Avenue













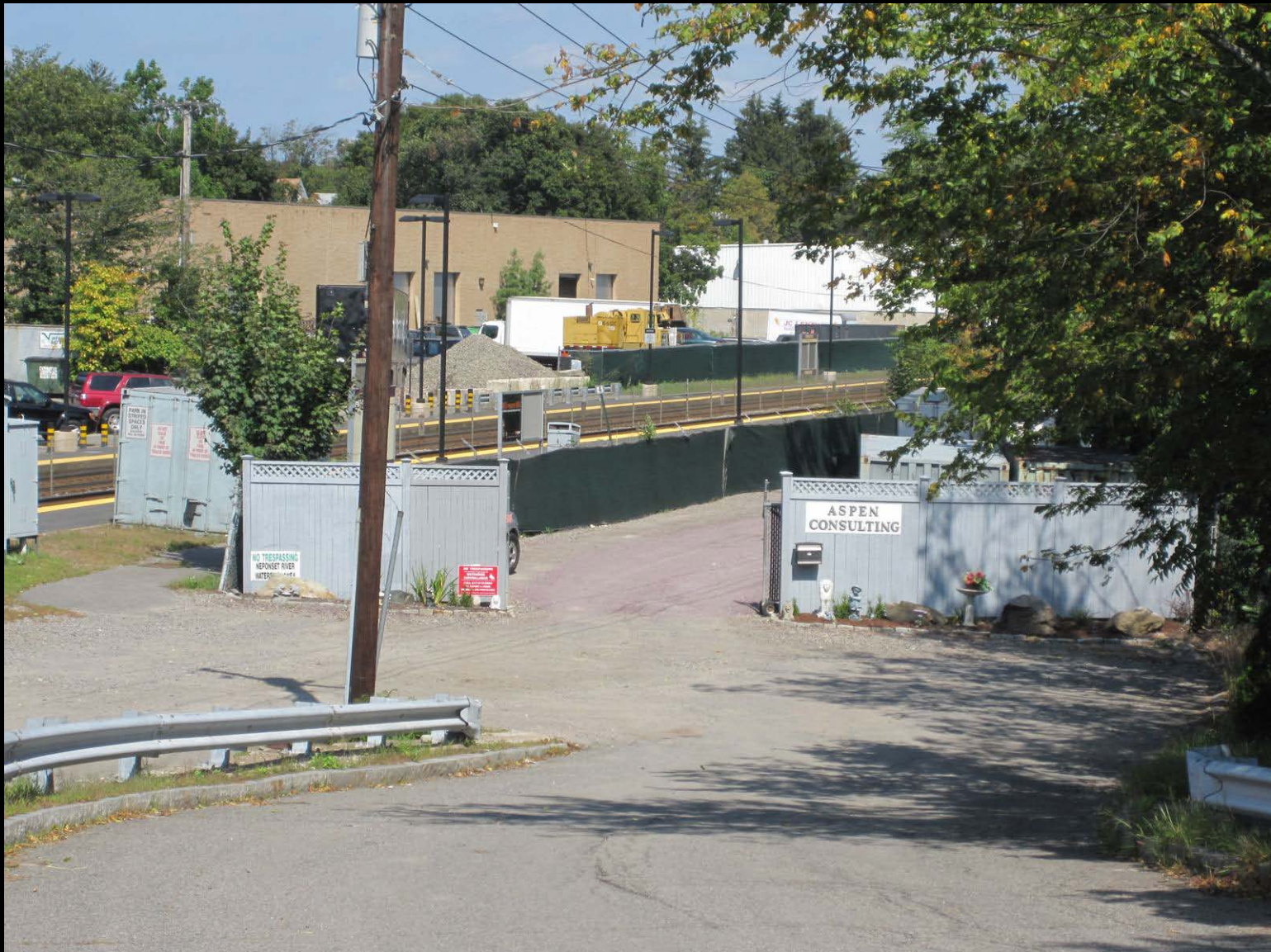










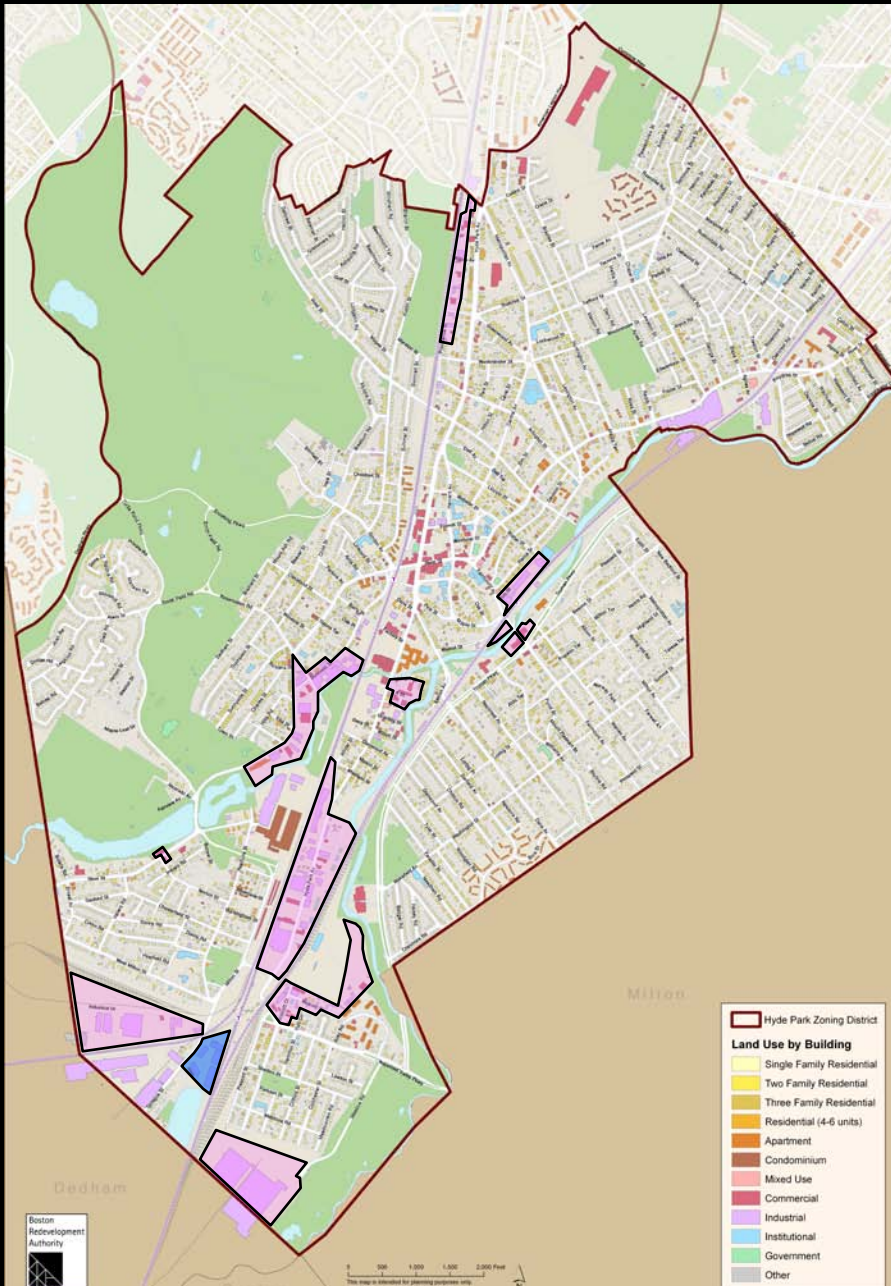








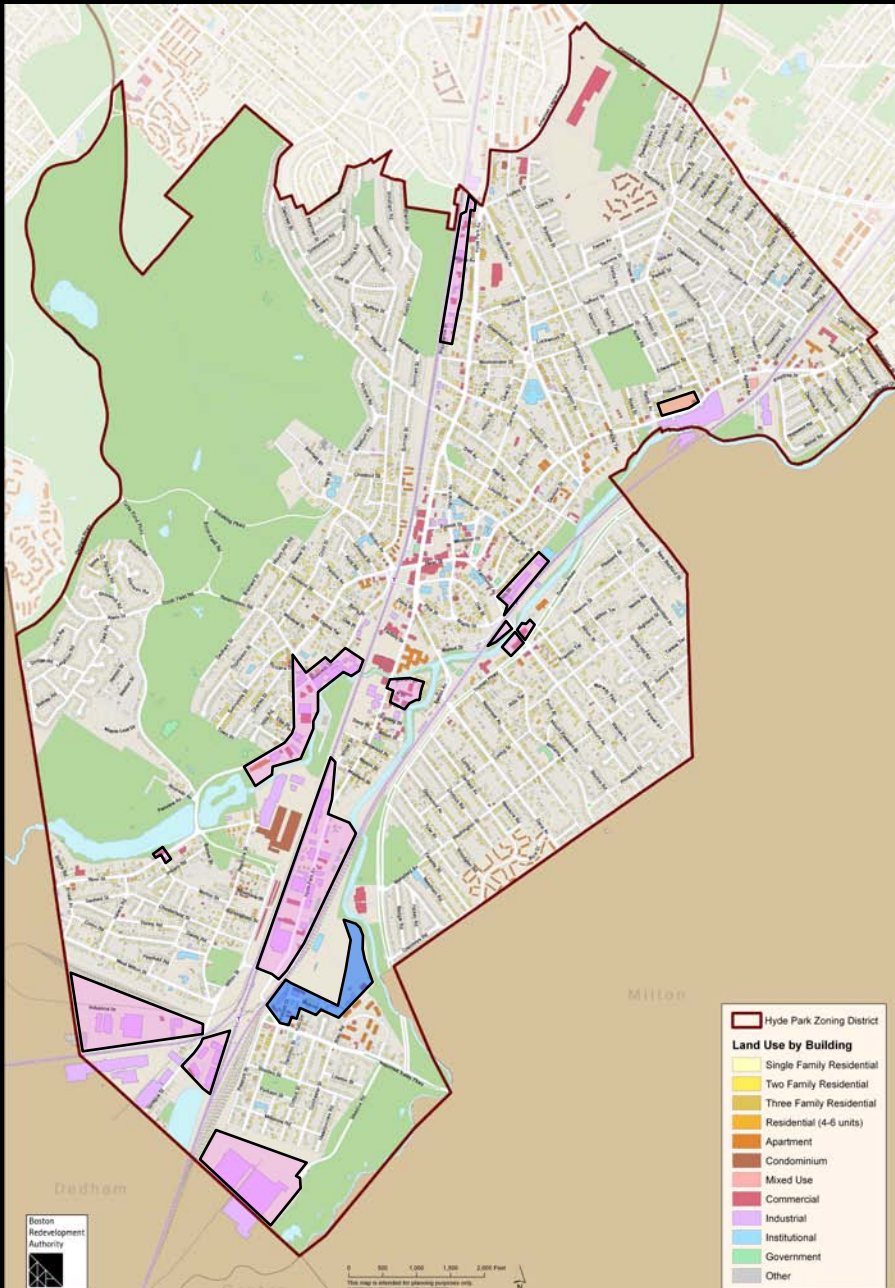
Sprague Street







Wolcott Street





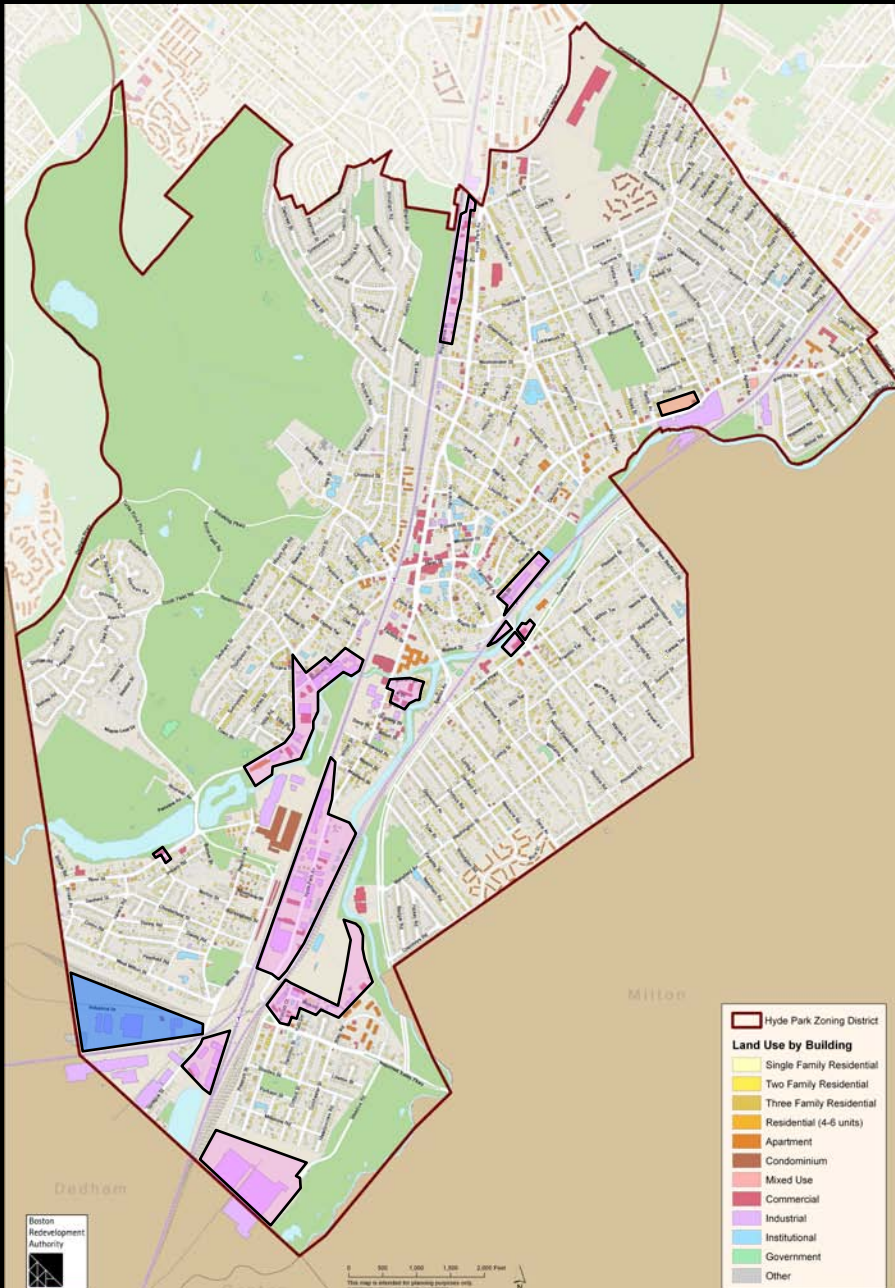








Industrial Drive





Key Development Parcels: Readville Yards and Stop & Shop Warehouse

