



Community Meeting 16 June 2009



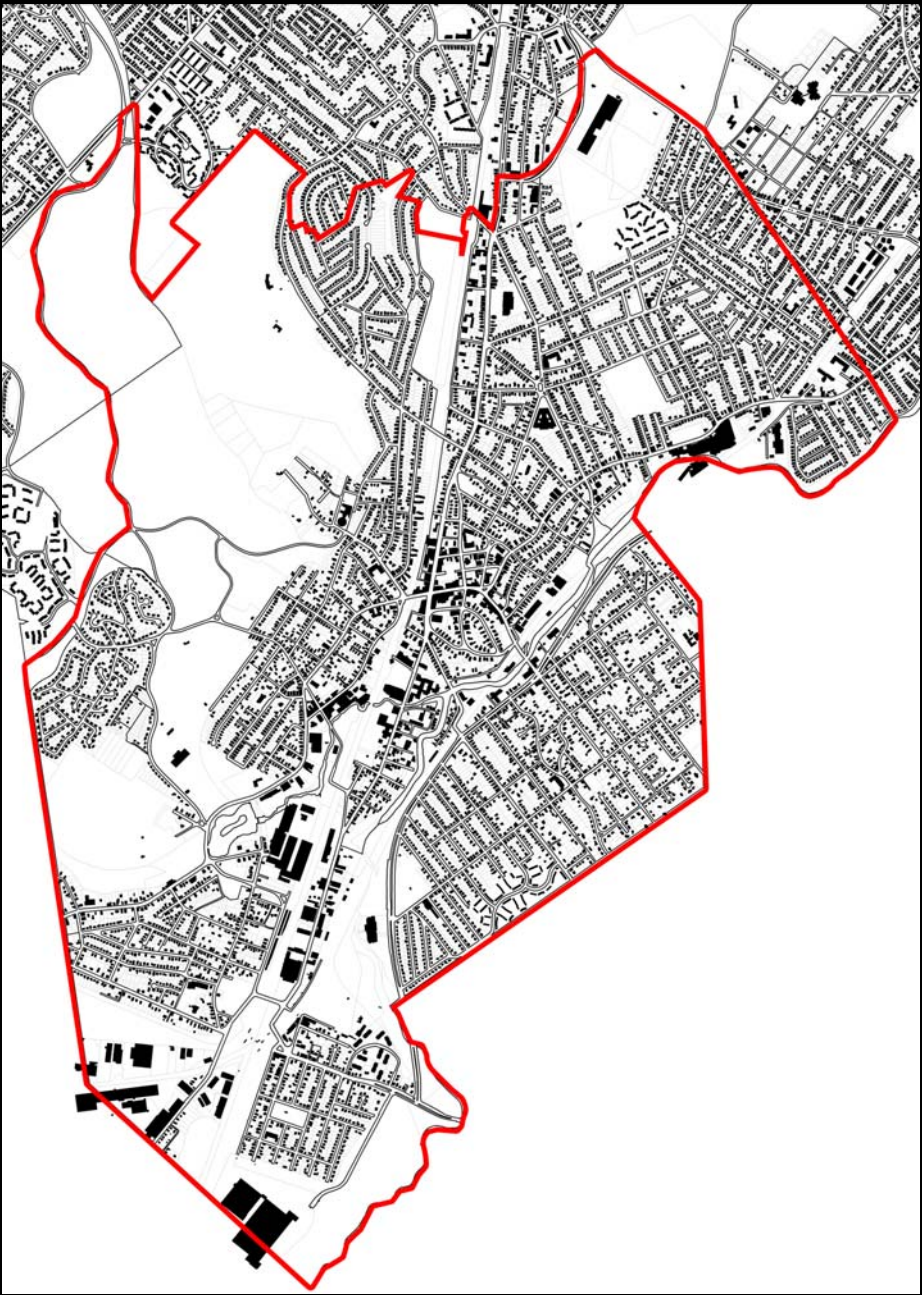
City of Boston
Thomas F. Menino
Mayor



Boston
Redevelopment
Authority

Key Issues

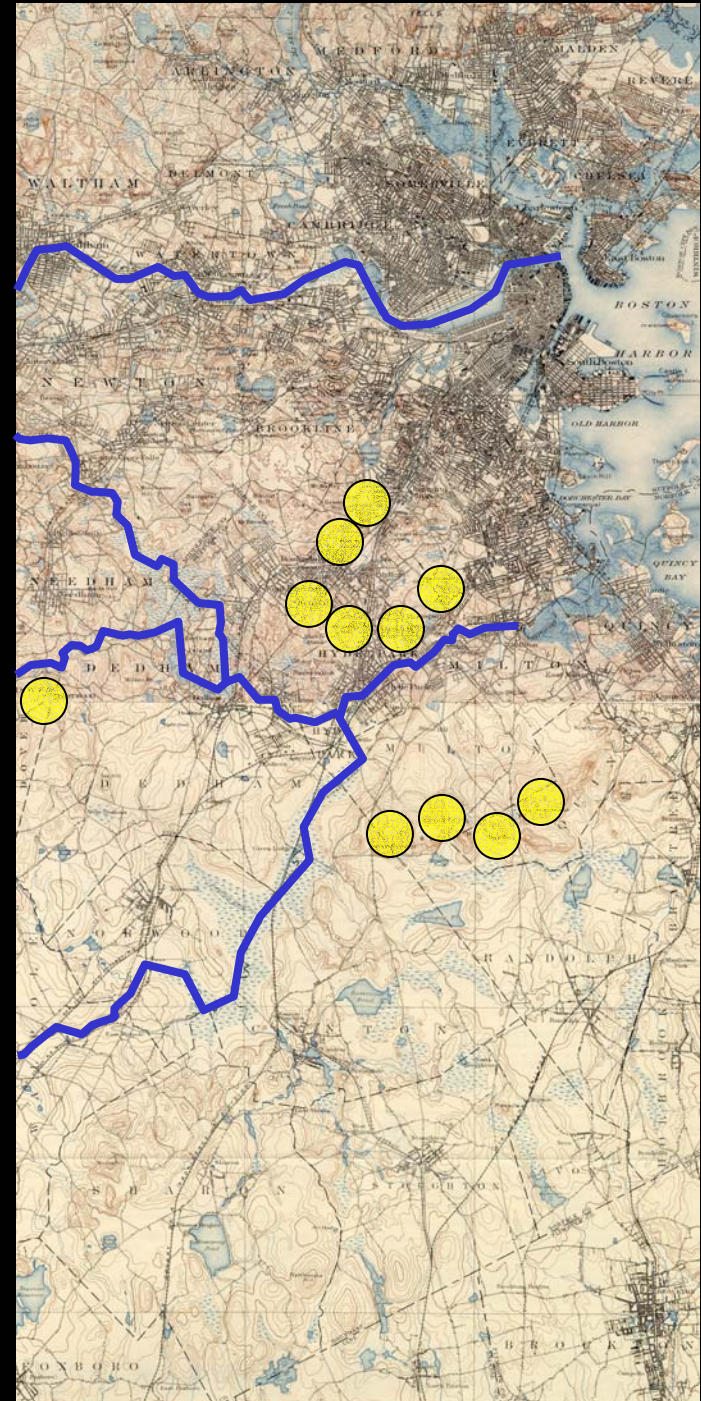
- Land Use
- Transportation
- Urban Design/Public Realm
- Open Space/Connections
- Government



1903/1942 Map



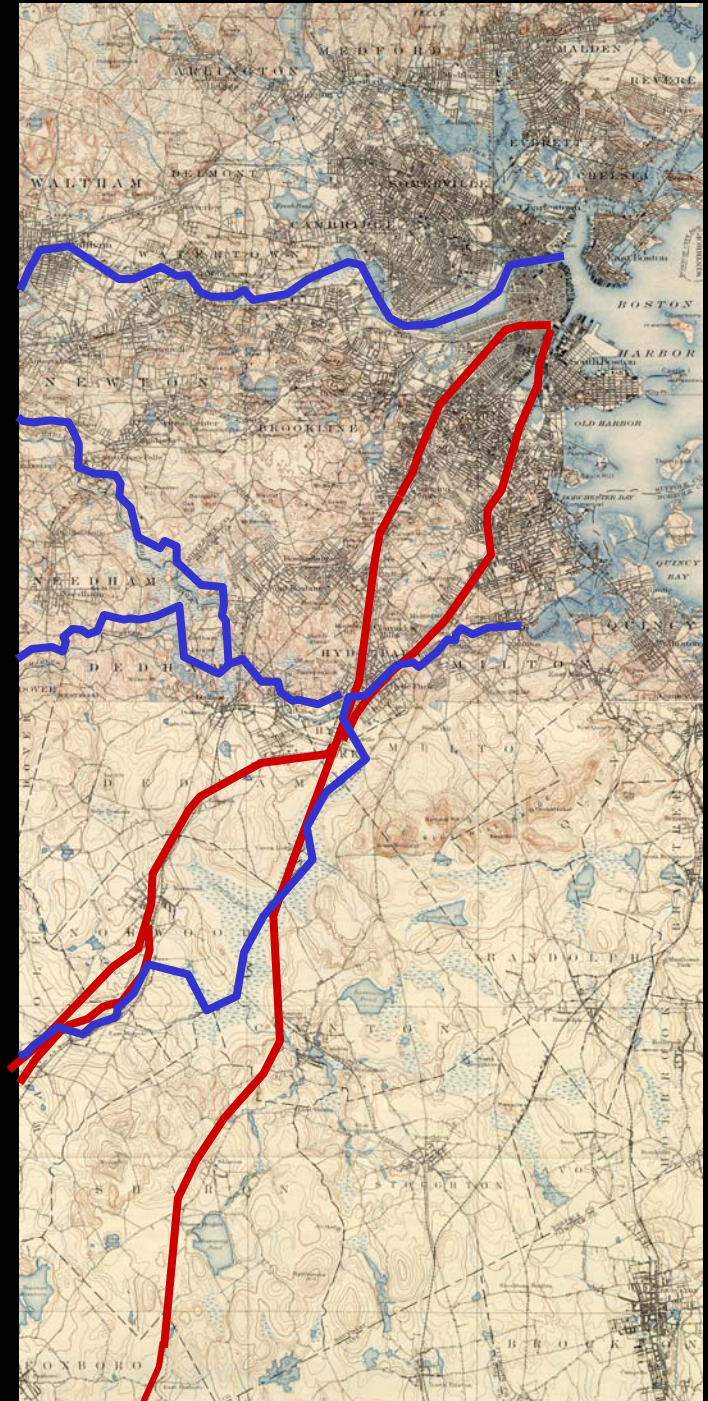
Natural Landscape



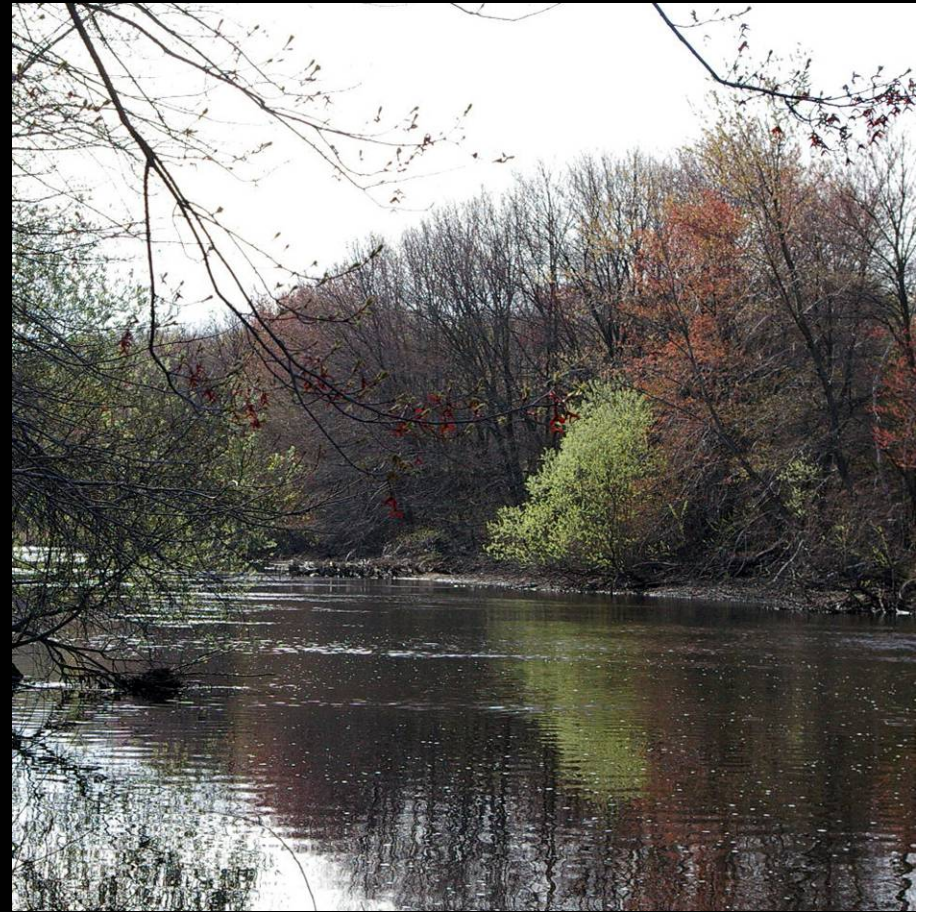
John Enneking



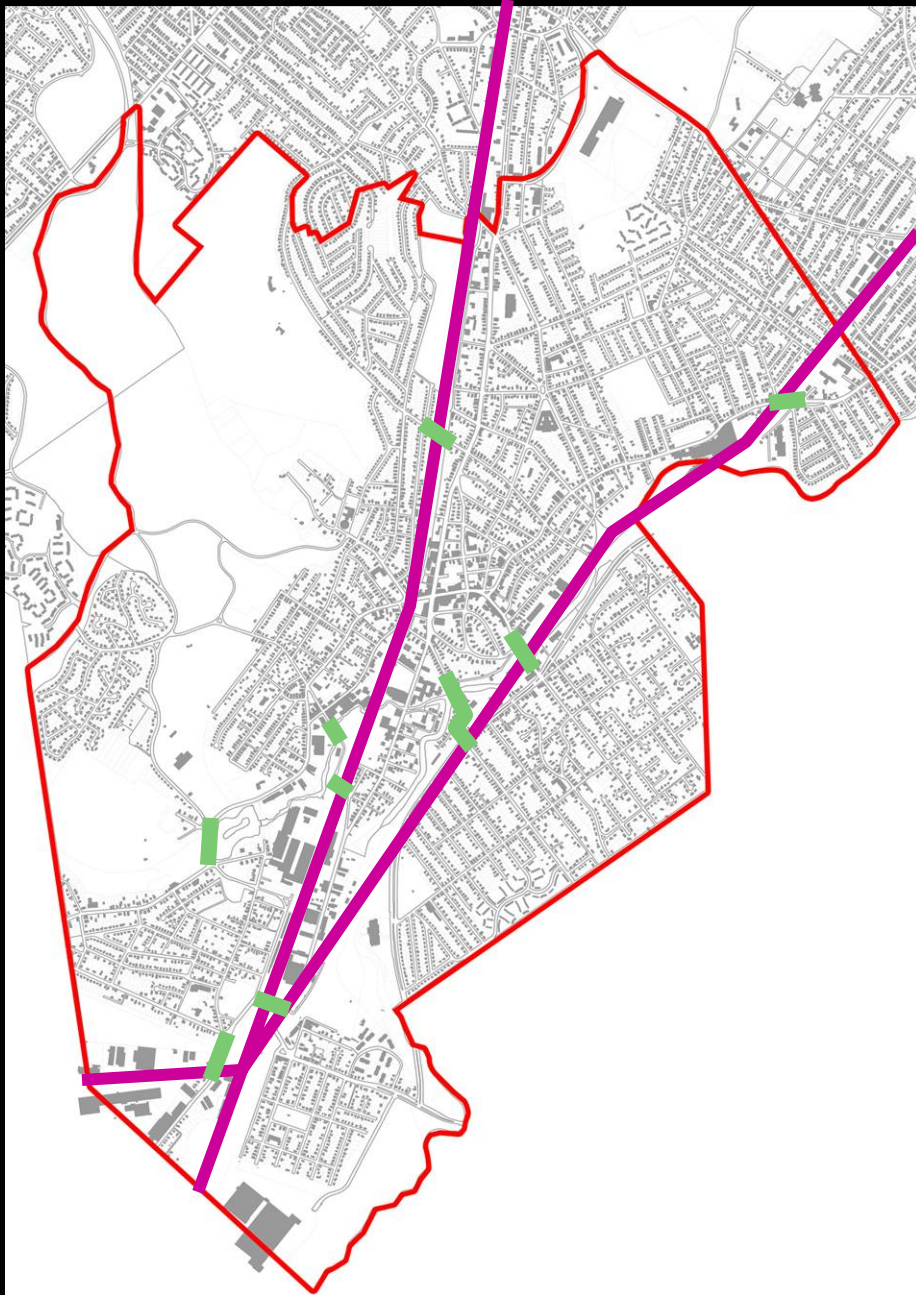
C|S|S



The Machine in the Garden

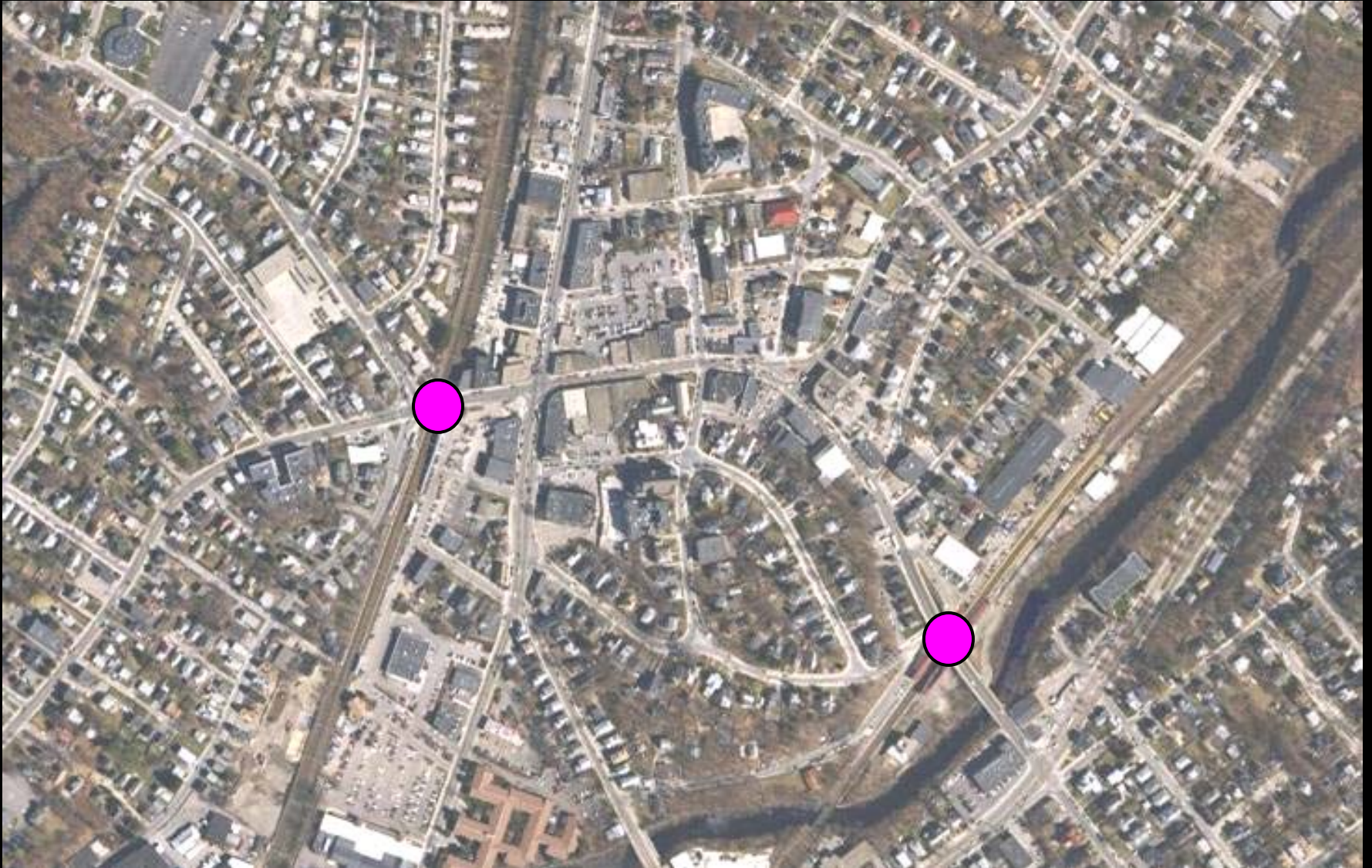


The Consequence



Land Use

Transit Oriented Development



Key Development Parcels: Fairmount Station



Boston's Newest Smart Growth Corridor: A Collaborative Vision for the Fairmount/Indigo Line

EXISTING Low-density, underused light industrial buildings on Hyde Park Avenue create an environment unfriendly to walking to the station.

POTENTIAL Dense, mixed-use and mixed-income development balanced by neighborhood open space can revitalize Hyde Park Avenue.

Parking and services located along the rail tracks.

Neighborhood park as a shared public amenity.

Streetscape improvements and landscape buffers to create an attractive residential "address".

LACONO PLAYGROUND

Gateway mixed-use building

Improved linkages to the station.

HEADVILLE STATION

EXISTING

Residential: Appropriate Density and Scale



Residential: Neighborhood Character



Industrial: Creative Reuse



Key Development Parcels: Readville Yards and Stop & Shop Warehouse



Industrial: Appearance



Commercial: Vibrant/Attractive Districts



Auto-Oriented Uses



Institutional: Integrate into Community



Incompatible Land Uses



Providence Street

Urban Design/Public Realm

Gateways and Public Realm



2.



CLEARY SQUARE WITH NEW MONUMENTAL TOWER AS PART OF EXPANDED PLAZA -- NEW T-STATION ENTRY @ STREET

3.



EXPANDED PLAZA AT RIVER ST & HYDE PARK AVE, PAGODA FOR PERFORMANCES, ACCESS TO T-STATION

Commercial Districts/Streetscape



Historic Preservation: Building Types



Historic Preservation: Street Wall, Massing, Scale



Priority Rehabilitation and Development Projects in Cleary and Logan Squares

Everett Square Theatre



French's Opera House



Burnes Brothers Bldg.



1231 River Street



Storefront and Building Facade Rehabilitation Initiative potential projects:

Ron's Ice Cream & Bowling Alley

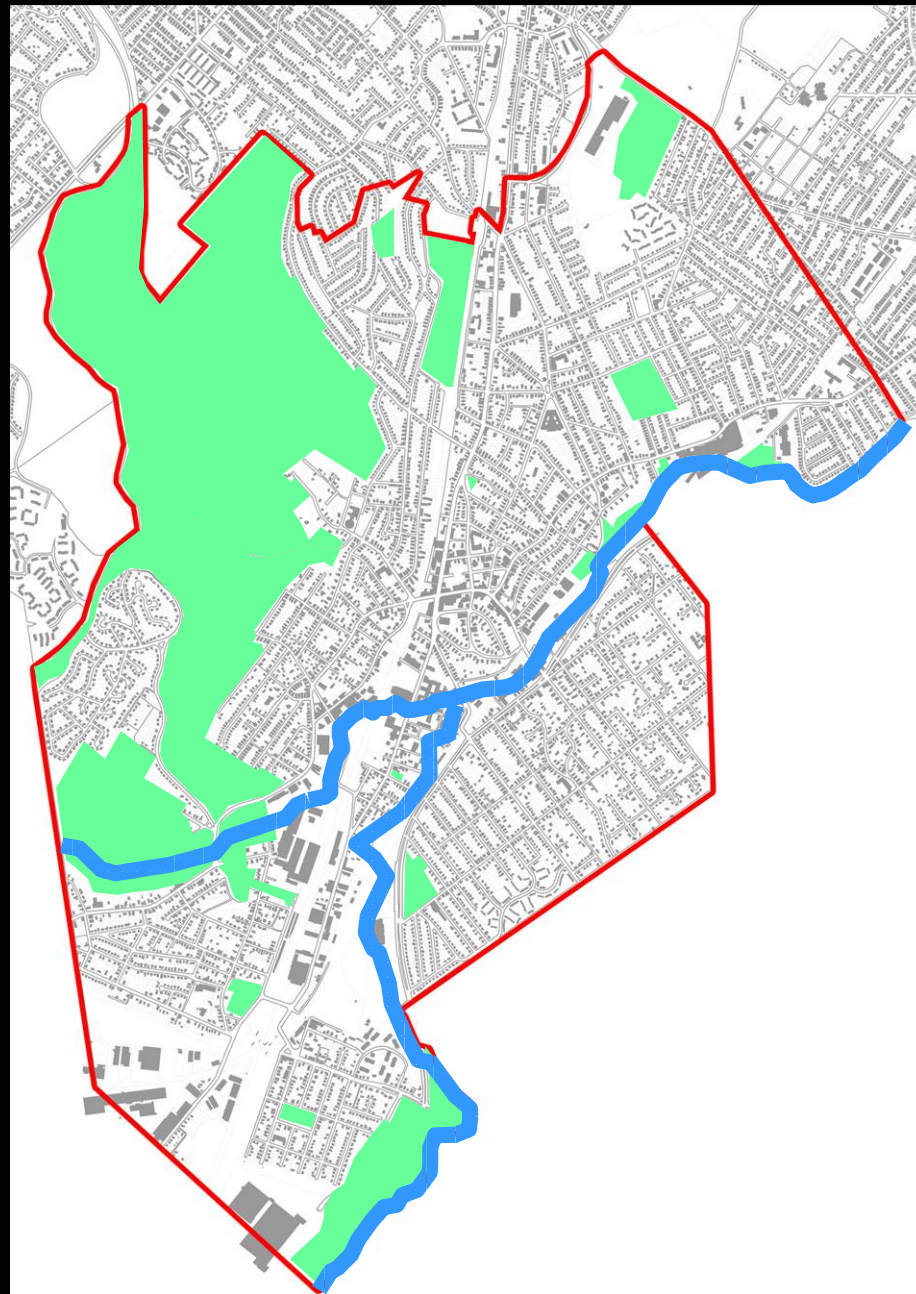


Master McGrath Block



Open Space

Open Space: Connections to Neponset River & Mother Brook



Open Space: Neponset River



Open Space: Connections to the River

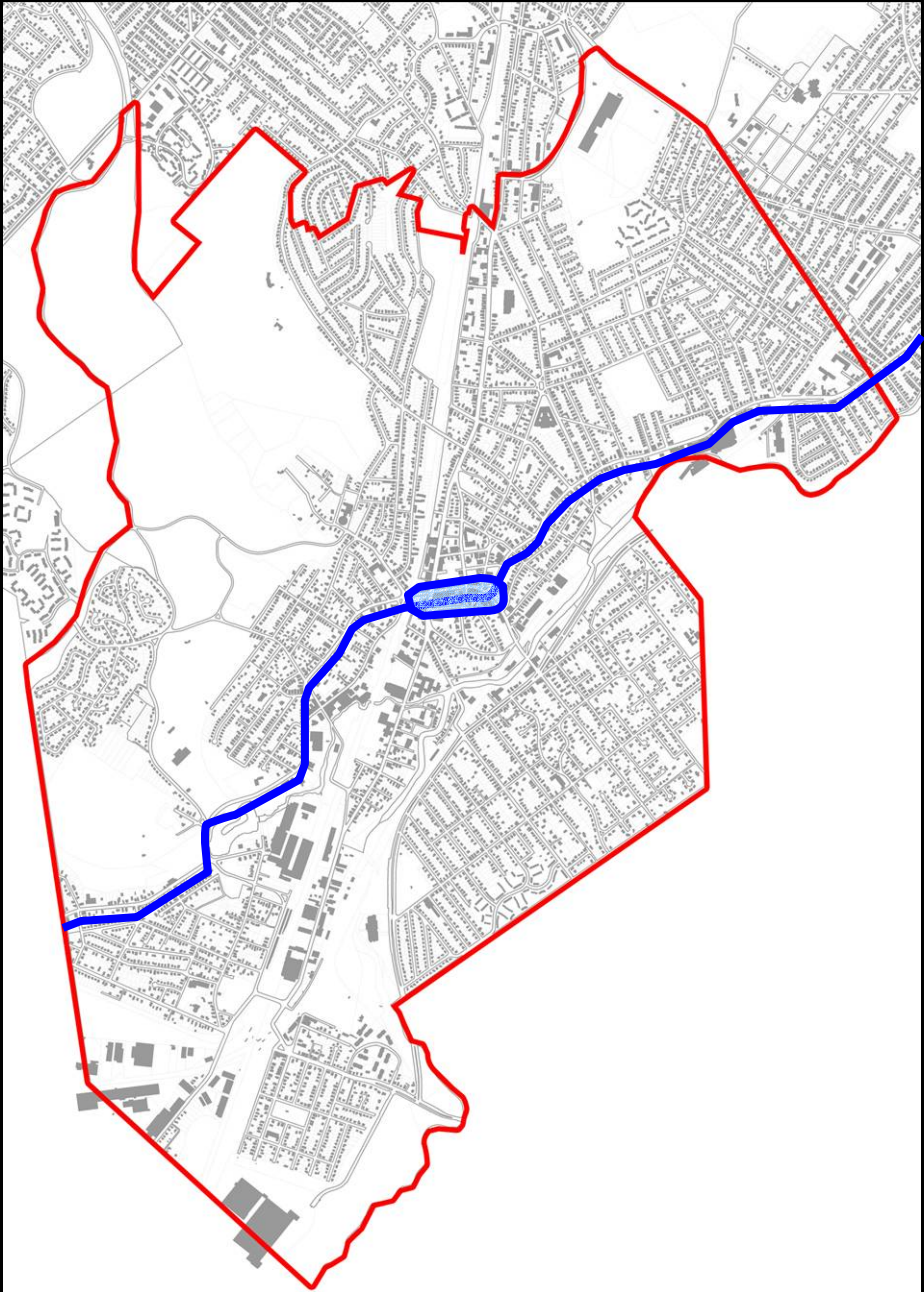


Open Space: Play Areas

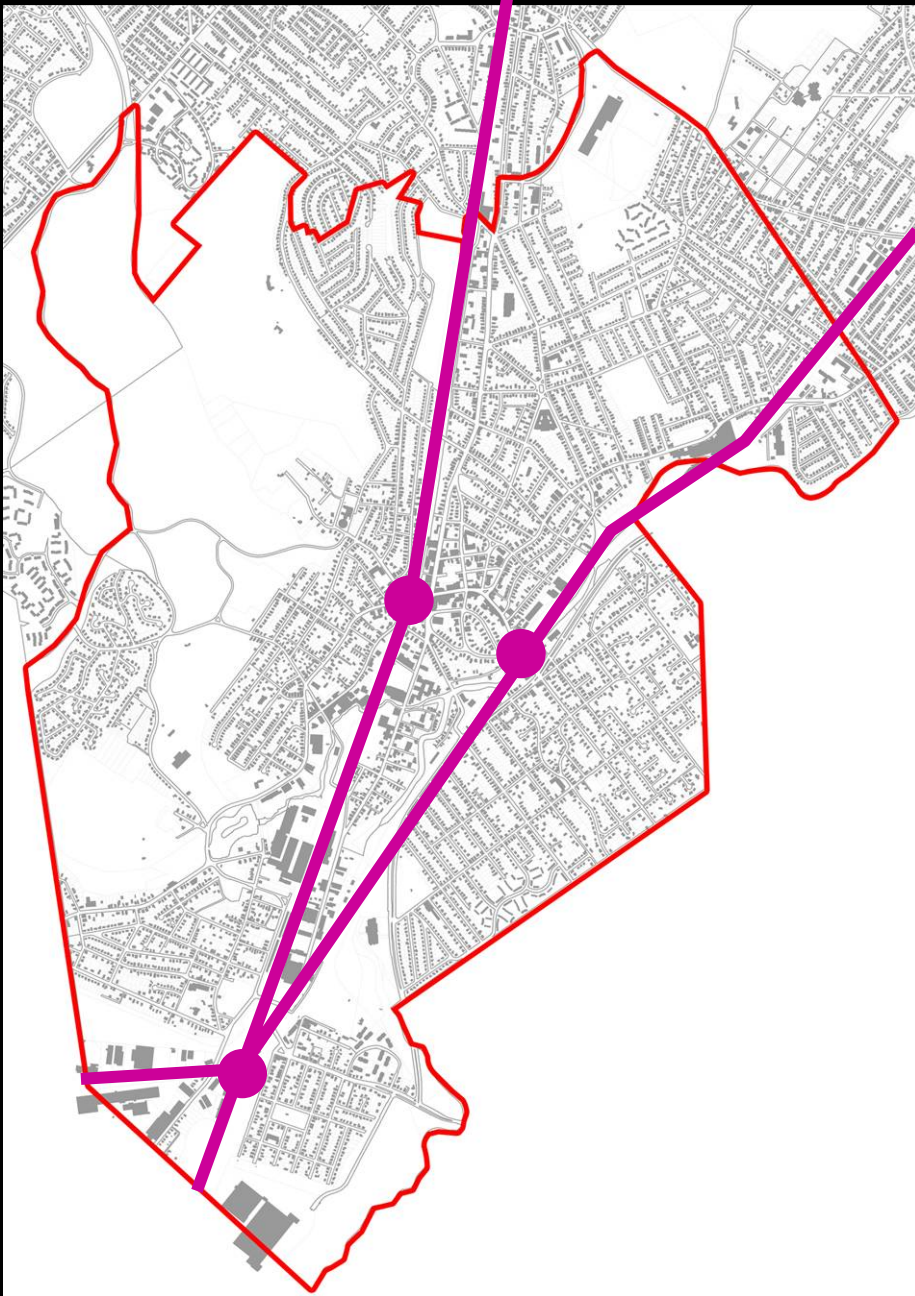


Transportation

Transportation: Congestion on River Street



Transit: Service and TOD



Parking: Use of MBTA lots, Enforcement, Ratios



Government

- Code Enforcement
- Development Review
- Public Buildings: Post Office Annex and Police Station Auction Yard



- 1. Post Office & Post Office Bldg.
- 2. Post Office Station, Old Colony R.R.
- 3. Riverside
- 4. New England
- 5. New England
- 6. New England
- 7. New England
- 8. New England
- 9. New England
- 10. New England
- 11. New England
- 12. New England
- 13. New England
- 14. New England
- 15. New England
- 16. New England
- 17. New England
- 18. New England
- 19. New England
- 20. New England
- 21. New England
- 22. New England
- 23. New England
- 24. New England
- 25. New England
- 26. New England
- 27. New England
- 28. New England
- 29. New England
- 30. New England
- 31. New England
- 32. New England
- 33. New England
- 34. New England
- 35. New England
- 36. New England
- 37. New England
- 38. New England
- 39. New England
- 40. New England
- 41. New England
- 42. New England
- 43. New England
- 44. New England
- 45. New England
- 46. New England
- 47. New England
- 48. New England
- 49. New England
- 50. New England
- 51. New England
- 52. New England
- 53. New England
- 54. New England
- 55. New England
- 56. New England
- 57. New England
- 58. New England
- 59. New England
- 60. New England
- 61. New England
- 62. New England
- 63. New England
- 64. New England
- 65. New England
- 66. New England
- 67. New England
- 68. New England
- 69. New England
- 70. New England
- 71. New England
- 72. New England
- 73. New England
- 74. New England
- 75. New England
- 76. New England
- 77. New England
- 78. New England
- 79. New England
- 80. New England
- 81. New England
- 82. New England
- 83. New England
- 84. New England
- 85. New England
- 86. New England
- 87. New England
- 88. New England
- 89. New England
- 90. New England
- 91. New England
- 92. New England
- 93. New England
- 94. New England
- 95. New England
- 96. New England
- 97. New England
- 98. New England
- 99. New England
- 100. New England

HYDE PARK,

MASSACHUSETTS.

U.S. PATENT & CO. PRINTERS & PUBLISHERS.

1890.

- 101. New England
- 102. New England
- 103. New England
- 104. New England
- 105. New England
- 106. New England
- 107. New England
- 108. New England
- 109. New England
- 110. New England
- 111. New England
- 112. New England
- 113. New England
- 114. New England
- 115. New England
- 116. New England
- 117. New England
- 118. New England
- 119. New England
- 120. New England
- 121. New England
- 122. New England
- 123. New England
- 124. New England
- 125. New England
- 126. New England
- 127. New England
- 128. New England
- 129. New England
- 130. New England
- 131. New England
- 132. New England
- 133. New England
- 134. New England
- 135. New England
- 136. New England
- 137. New England
- 138. New England
- 139. New England
- 140. New England
- 141. New England
- 142. New England
- 143. New England
- 144. New England
- 145. New England
- 146. New England
- 147. New England
- 148. New England
- 149. New England
- 150. New England
- 151. New England
- 152. New England
- 153. New England
- 154. New England
- 155. New England
- 156. New England
- 157. New England
- 158. New England
- 159. New England
- 160. New England
- 161. New England
- 162. New England
- 163. New England
- 164. New England
- 165. New England
- 166. New England
- 167. New England
- 168. New England
- 169. New England
- 170. New England
- 171. New England
- 172. New England
- 173. New England
- 174. New England
- 175. New England
- 176. New England
- 177. New England
- 178. New England
- 179. New England
- 180. New England
- 181. New England
- 182. New England
- 183. New England
- 184. New England
- 185. New England
- 186. New England
- 187. New England
- 188. New England
- 189. New England
- 190. New England
- 191. New England
- 192. New England
- 193. New England
- 194. New England
- 195. New England
- 196. New England
- 197. New England
- 198. New England
- 199. New England
- 200. New England

