

JP Centre & South Street Corridor Transportation and Streetscape Action Plan

Citizens Advisory Group Meeting

**Julia Martin House
90 Bickford Street**

**Wednesday, September 30, 2009
6:30-8:30 PM**





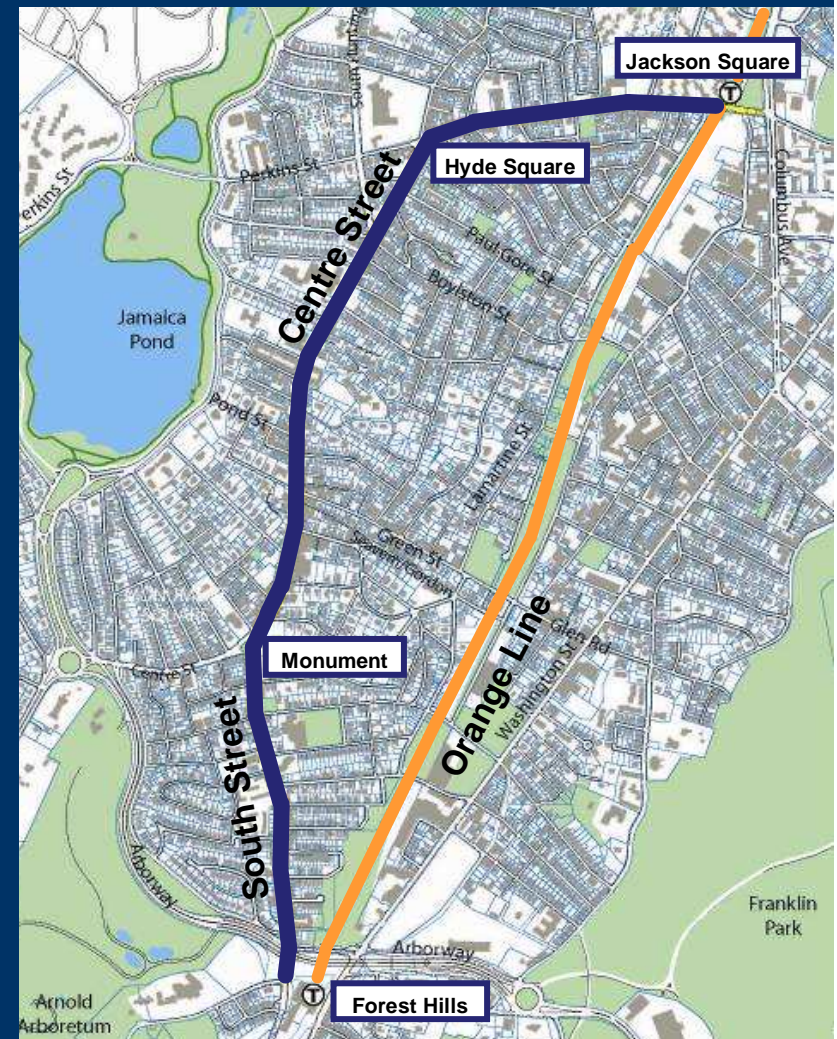
Agenda

- I. Welcome, introductions, project overview
- II. CAC meeting procedures, emails, etc.
- III. MBTA Bus 39 route coordination and update
- IV. McMahon Associates, project consultant
 - *Presentation*
 - *Questions and comments*
- V. Next Steps



Project Overview

- Funded through city of Boston capital budget
- Focus on implementation
- Interdepartmental effort
- Citizens Advisory Committee and Public Meetings





Project Overview

Task 1: Develop a vision for the corridor

What should the corridor look like in 3, 5, and 10 years?

Task 2: Create streetscape corridor guidelines

Corridorwide streetscape elements, bicycle network plan, public transportation

Task 3: Redesign transportation nodes

Traffic analysis; intersection redesign, with cost estimates

Task 4: Propose parking management strategy

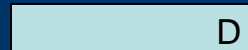
Parking demand, curbside regulations, off-street parking facility locations



Project Overview

Jul Aug Sep Oct Nov Dec Jan Feb Mar Apr May June

Task 1: Corridor Vision



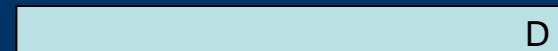
Task 2: Create Corridor Streetscape Vision



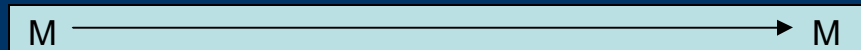
Task 3: Redesign Transportation Nodes



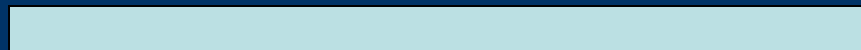
Task 4: Parking Management Strategy



Task 5: Public Process



Interagency Coordination



D: Deliverable

M: Meeting



Jamaica Plain
Centre/South Street
Transportation Action Plan



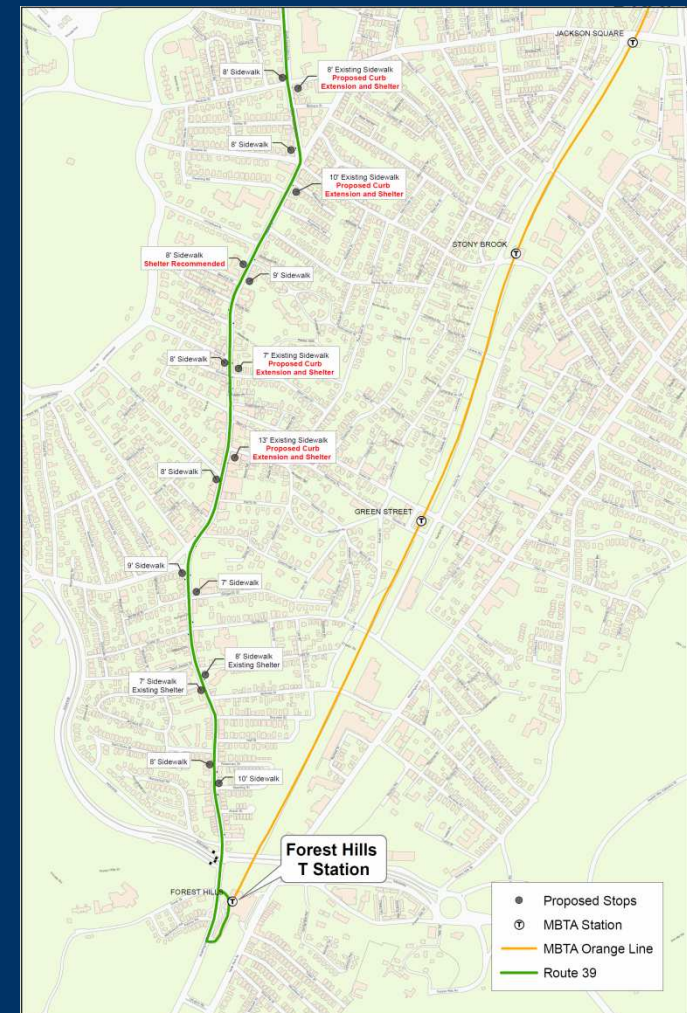
Citizens Advisory Committee

- Procedures
- Communication
- Notification



Route 39 Summary of Process

- Route 39 Working Group
- Forest Hills – Back Bay
- Schedule update
 - Exploring Perkins – Back Bay
 - Installation this spring
- Proposed improvements
 - Traffic signal improvements
 - Stop consolidation & enhancement
 - Shelters, benches, and street furniture
 - Curb extensions

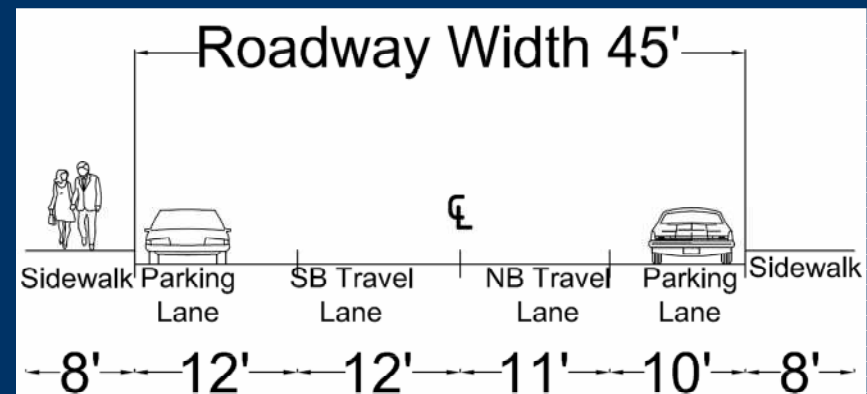




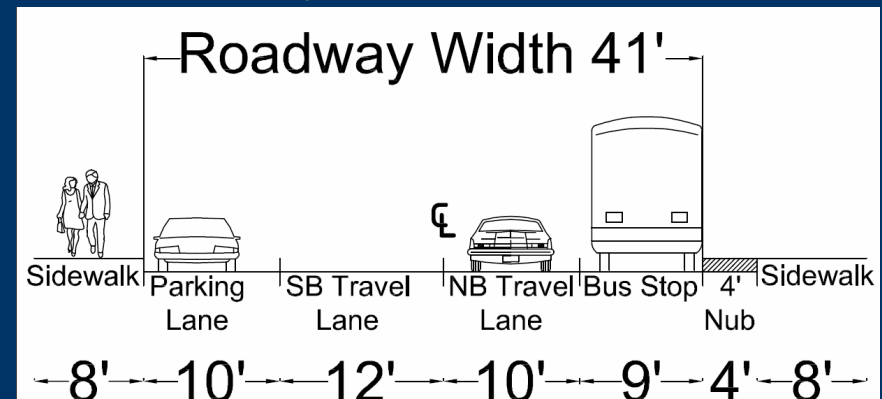
Route 39 Curb Extensions

- How do these work?
 - St. John's Example
- Coordinated with
 - BTD
 - PIC
 - Route 39 Advisory Group
 - ONS

Existing Cross-Section

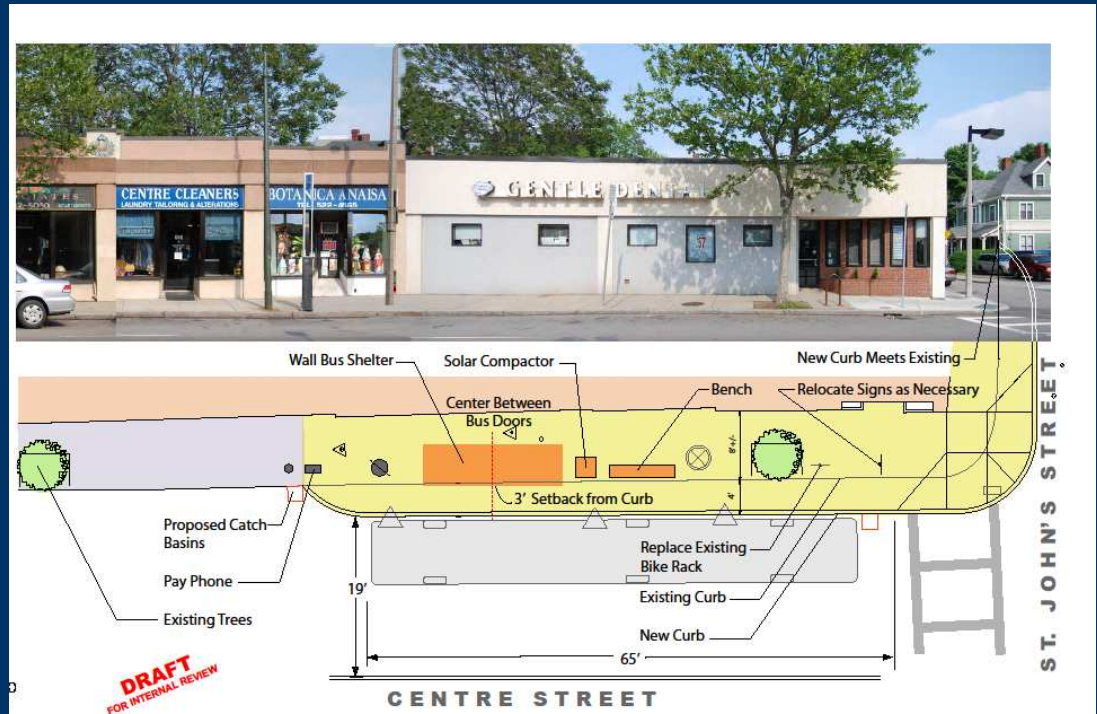
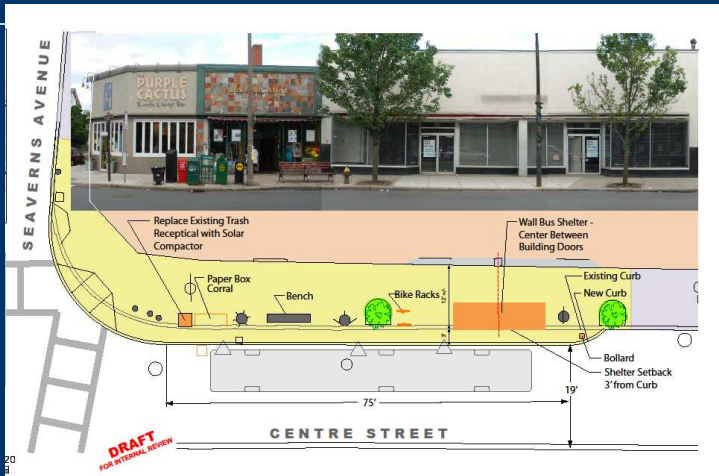


Proposed Cross-Section





Route 39 Curb Extensions





Upcoming Schedule Overview

CAC Meeting 1 – 7/15/09

- >Introduction

CAC Meeting 2 – 9/30/09

- >Draft Vision statement
- >Urban design analysis

CAC Meeting 3 – late Oct/early Nov

- >Finalize vision statement
- >Streetscape guidelines
- >Identify nodes
- >Modal Strategies
 - Bicycles
 - Parking
 - Public Transportation

Public Meeting – mid-November

- >CAC presents Vision Statement
- >Streetscape Guidelines
- >Discussion of nodes
- >Modal strategies

CAC Meeting 4 – early December

- >Finalize guidelines and materials
- >Select nodes
- >Modal strategies
 - Preliminary recommendations

CAC Meeting 5 – early January '10

- >Preliminary concepts at key nodes



What is “a vision”?

- Identification of what you want to happen
 - Verbally
 - With images (that is what we are here to help with)
1. “Vision Statement”
 - goals and objectives (verbal)
 2. Inventory/Analysis
 - issues and opportunities
 3. Generate alternatives/Synthesis
 4. Narrow alternatives to a preferred strategy
 5. ...a Vision...



Vision Statement

Diverse, and unified

Beautiful, and functional

Special, and ordinary

Connected, and stands alone is the vision for
Jamaica Plain's Centre/South Street corridor.

A place where all uses and users are functionally
and aesthetically integrated in a safe, convenient
and accessible environment.



Vision Statement

- Character

- Create special places along the corridor
- Restore appropriate density along the corridor, with more mixed uses
- Preserve and expand public art (murals, et al) [Centre Street Artwalk]
- Employ sustainable design strategies for all installations
- Ensure a well-lit street environment, with fixtures and storefront lighting of appropriate scale



Vision Statement

- **Character**

- Plan appropriate spaces for community events and celebration
- Increase street trees/canopy with species appropriate to adjacent land uses
- Reduce visual sidewalk and street clutter, with attention to the catenary poles

- **Connectivity**

- Integrate connections to and management of side streets
- Enhance connections to open spaces



Vision Statement

- **Uses and Users**

- Create a safe, convenient bicycling environment, and a safe, convenient pedestrian environment
- Preserve adequate traffic flow throughout the district
- Provide additional resources to support high bicycling interest and activity
- Develop pedestrian nodes and continuous sidewalk paths
- Optimize management of parking resources
- Protect and enhance the neighborhood's transit heritage



Analysis: “Great Streets”

“Certain physical qualities are required for a great street.”

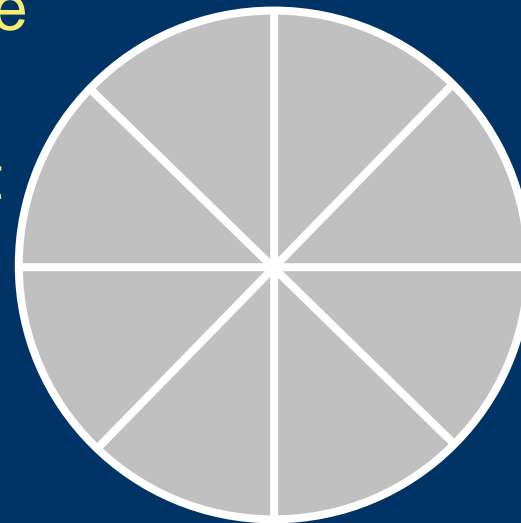
from Great Streets by Allan B. Jacobs

1. Space to walk
with some leisure

2. Physical comfort

3. Definition

4. Qualities that
engage the eye



5. Transparency

6. Complementarity

7. Maintenance

8. Quality of
Design and
construction



“Great Streets” criteria

“Certain physical qualities are required for a great street.”

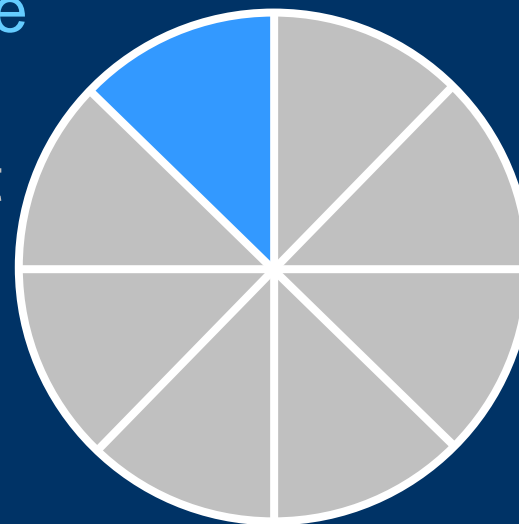
from Great Streets by Allan B. Jacobs

1. Space to walk
with some leisure

2. Physical comfort

3. Definition

4. Qualities that
engage the eye



PUBLIC REALM

5. Transparency

6. Complementarity

7. Maintenance

8. Quality of
Design and
construction



“Great Streets” criteria

“Certain physical qualities are required for a great street.”

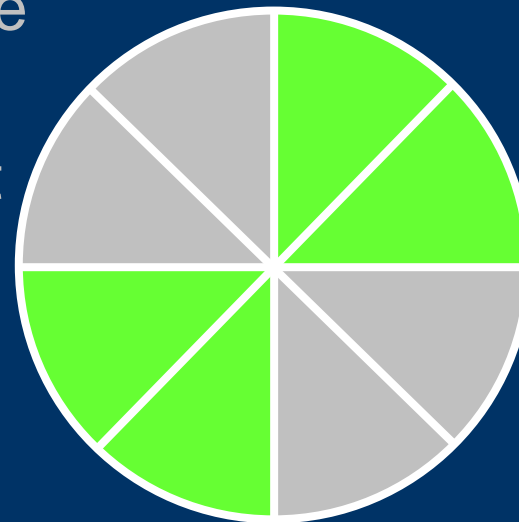
from Great Streets by Allan B. Jacobs

1. Space to walk
with some leisure

2. Physical comfort

3. Definition

4. Qualities that
engage the eye



**PRIVATE
PROPERTY**

5. Transparency

6. Complementarity

7. Maintenance

8. Quality of
Design and
construction



“Great Streets” criteria

“Certain physical qualities are required for a great street.”

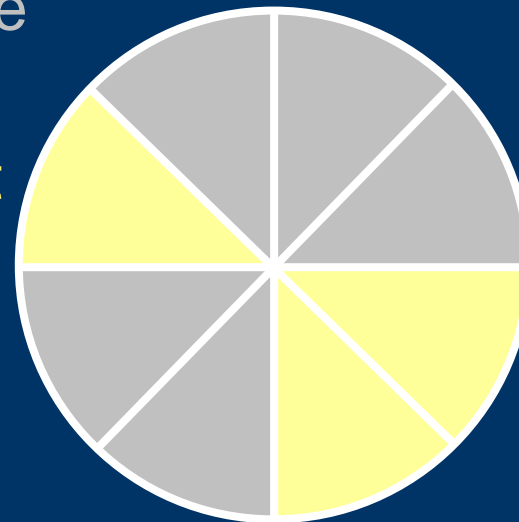
from Great Streets by Allan B. Jacobs

1. Space to walk
with some leisure

2. Physical comfort

3. Definition

4. Qualities that
engage the eye



SHARED

5. Transparency

6. Complementarity

7. Maintenance

8. Quality of
Design and
construction



Space to Walk

1. Space to walk with some leisure
2. Physical comfort
3. Definition
4. Qualities that engage the eye
5. Transparency
6. Complementarity
7. Maintenance
8. Quality of Design and construction





Physical Comfort

1. Space to walk with some leisure
2. Physical comfort
3. Definition
4. Qualities that engage the eye
5. Transparency
6. Complementarity
7. Maintenance
8. Quality of Design and construction





Definition

1. Space to walk with some leisure
2. Physical comfort
3. Definition
4. Qualities that engage the eye
5. Transparency
6. Complementarity
7. Maintenance
8. Quality of Design and construction





Qualities that Engage the Eye

1. Space to walk with some leisure
2. Physical comfort
3. Definition
4. Qualities that engage the eye
5. Transparency
6. Complementarity
7. Maintenance
8. Quality of Design and construction





Transparency

1. Space to walk with some leisure
2. Physical comfort
3. Definition
4. Qualities that engage the eye
5. Transparency
6. Complementarity
7. Maintenance
8. Quality of Design and construction





Transparency

1. Space to walk with some leisure
2. Physical comfort
3. Definition
4. Qualities that engage the eye
5. Transparency
6. Complementarity
7. Maintenance
8. Quality of Design and construction





Complementarity

1. Space to walk with some leisure
2. Physical comfort
3. Definition
4. Qualities that engage the eye
5. Transparency
6. Complementarity
7. Maintenance
8. Quality of Design and construction





Maintenance

1. Space to walk with some leisure
2. Physical comfort
3. Definition
4. Qualities that engage the eye
5. Transparency
6. Complementarity
7. Maintenance
8. Quality of Design and construction

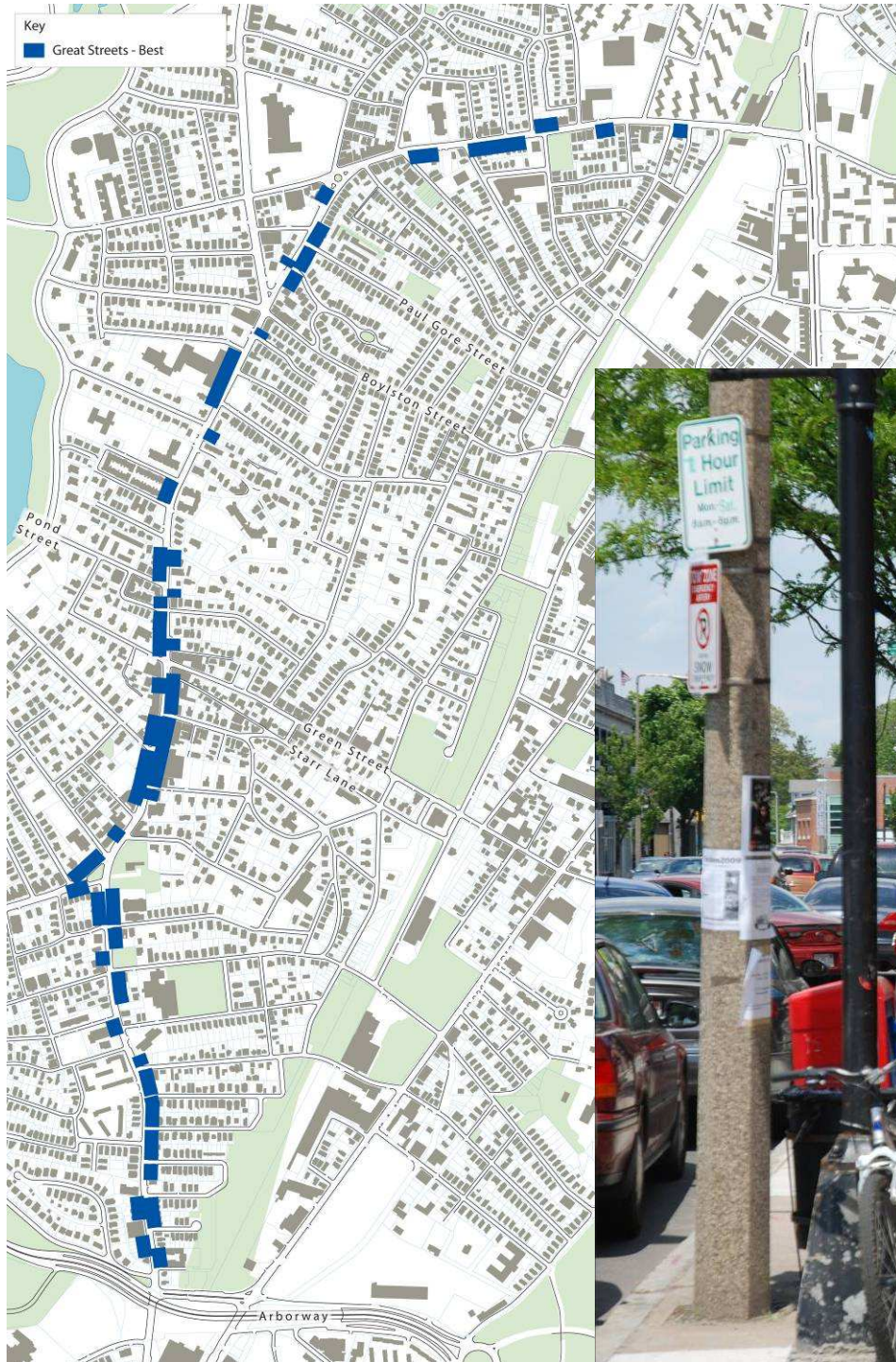




Quality of Design & Const.

1. Space to walk with some leisure
2. Physical comfort
3. Definition
4. Qualities that engage the eye
5. Transparency
6. Complementarity
7. Maintenance
8. Quality of Design and construction



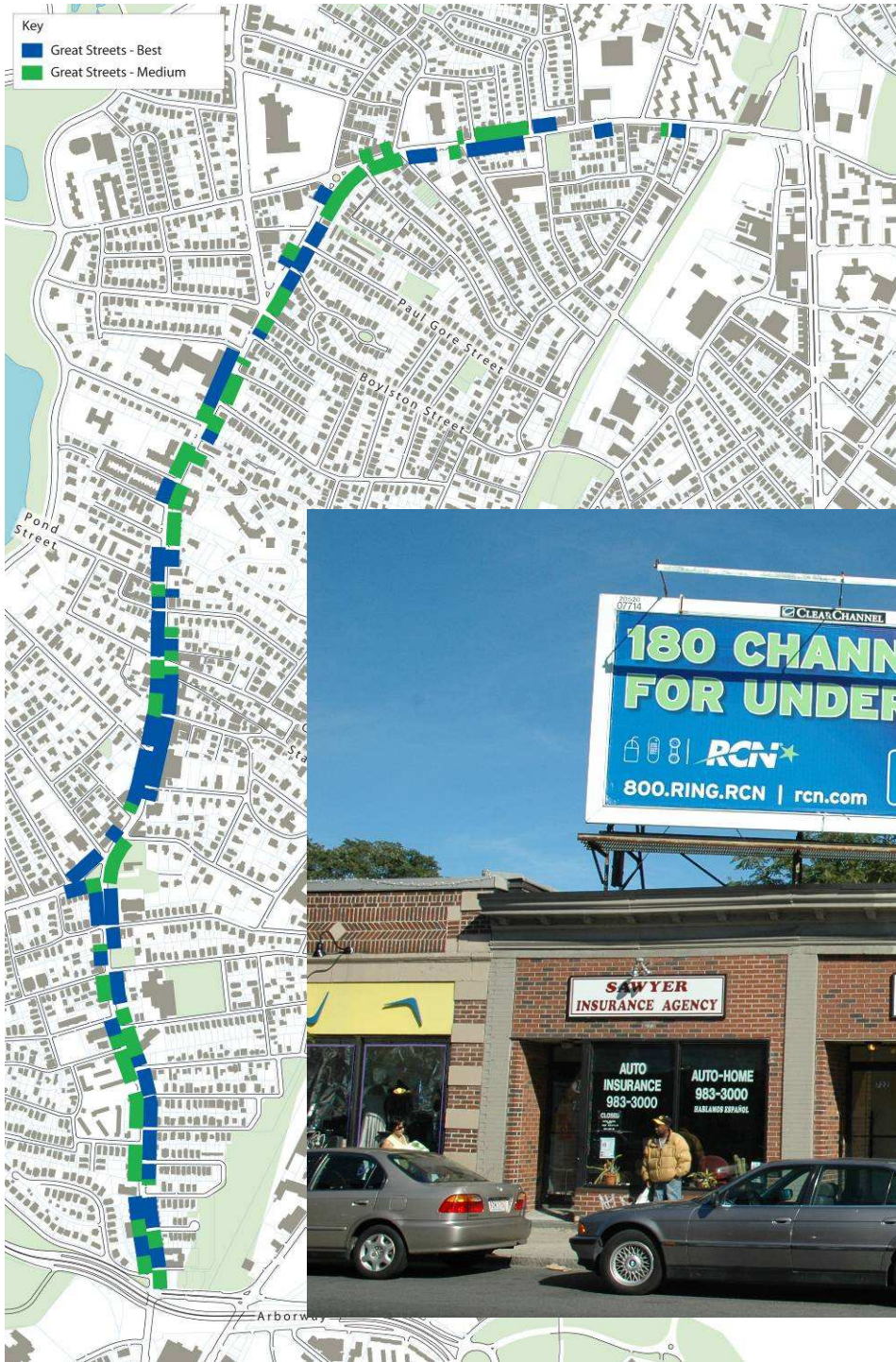


Jamaica Plain
Centre/South Street
Transportation Action Plan



Top Ranked





Jamaica Plain
Centre/South Street
Transportation Action Plan



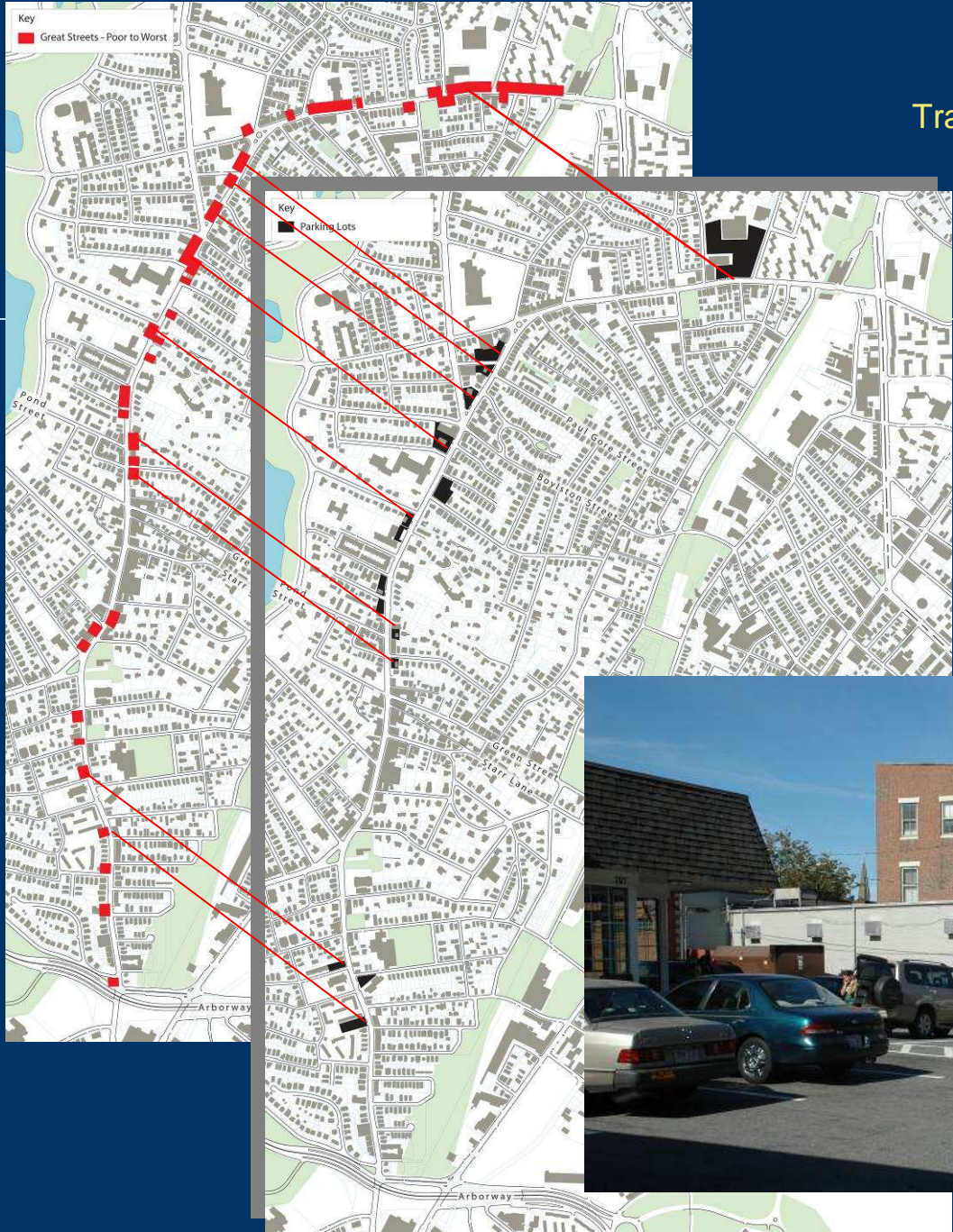
Mid-Ranked





Low Ranked

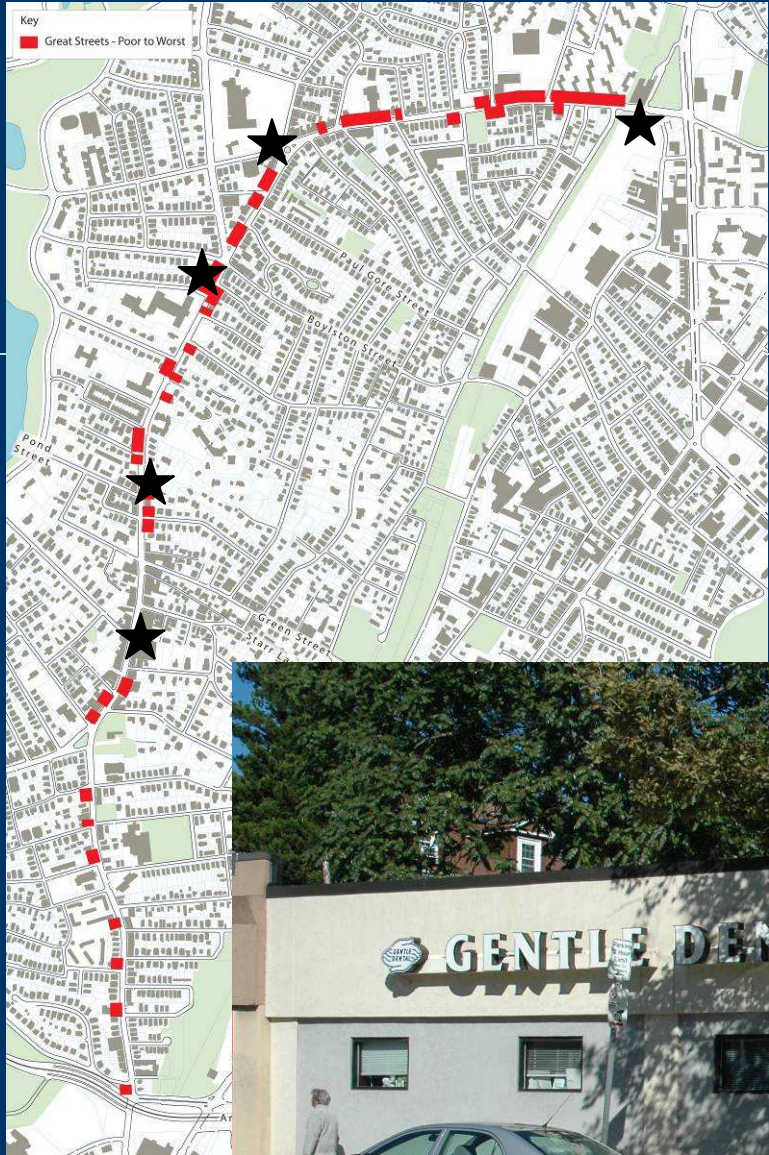
One category of problem areas correlates with parking lots along the street



Jamaica Plain
Centre/South Street
Transportation Action Plan



Low Ranked





“Great Streets” criteria

*“Not all streets that have these qualities are great streets,
but all great street have these qualities.”*

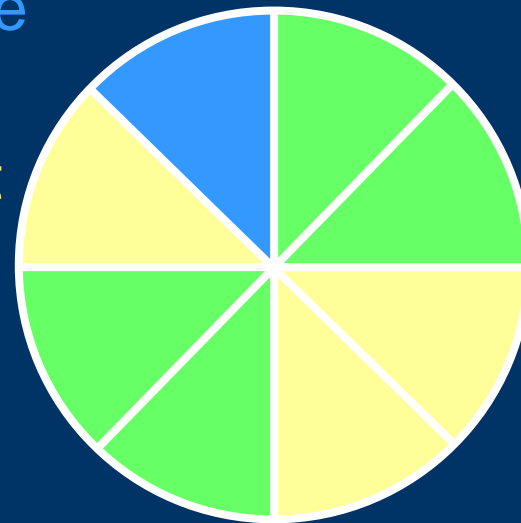
from Great Streets by Allan B. Jacobs

1. Space to walk
with some leisure

2. Physical comfort

3. Definition

4. Qualities that
engage the eye



5. Transparency

6. Complementarity

7. Maintenance

8. Quality of
Design and
construction



Inventory of Character Defining Elements

- Street lights
- Street trees/Canopy
- Murals
- Setbacks
- Typical Street Sections
 - Height-width Ratios
- Zoning (commercial)
- Topography
- *Rooms and Views*



Jamaica Plain
Centre/South Street
Transportation Action Plan



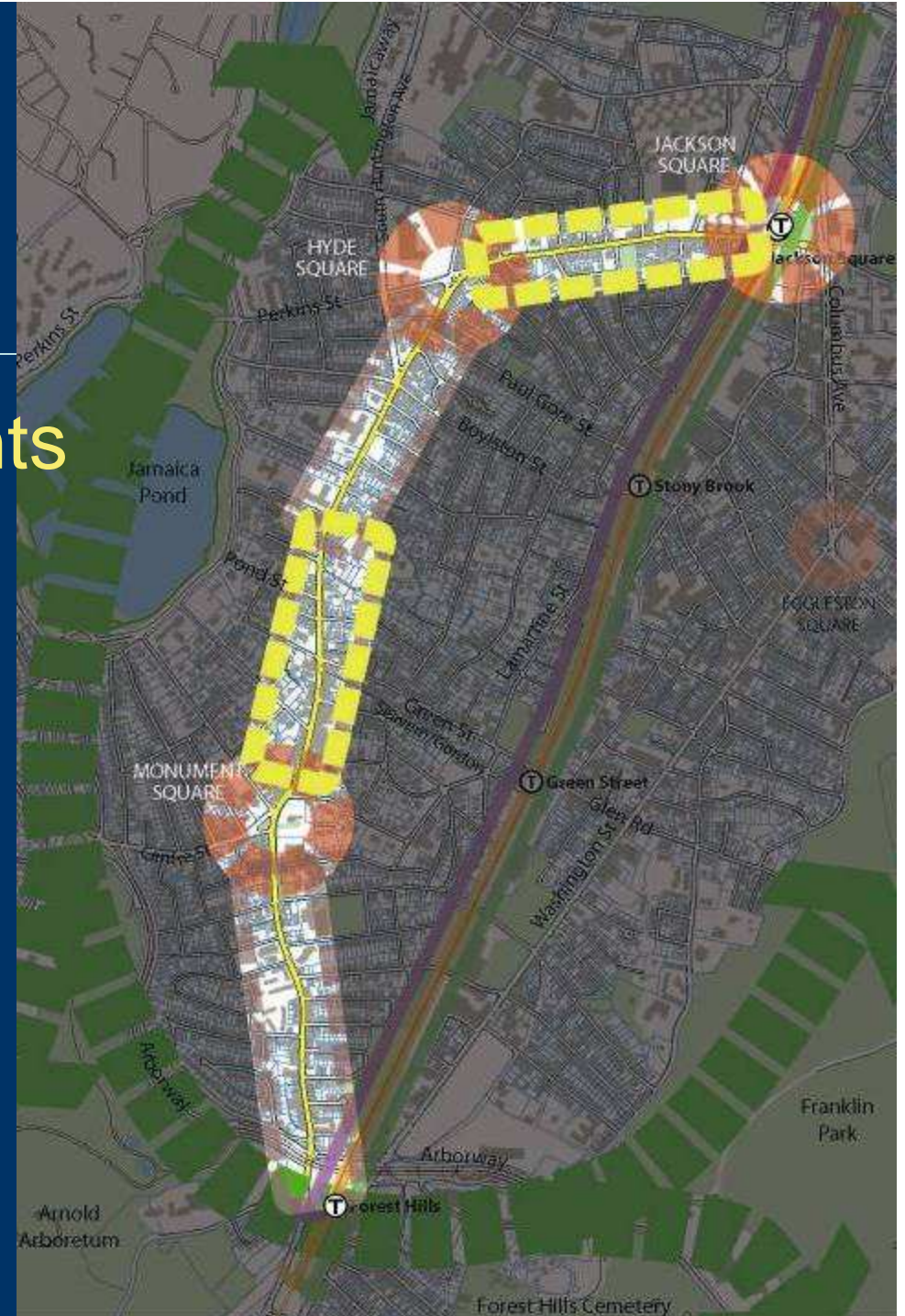
Patterns

Overlay various elements

Look for patterns

Consistent elements

Changing elements



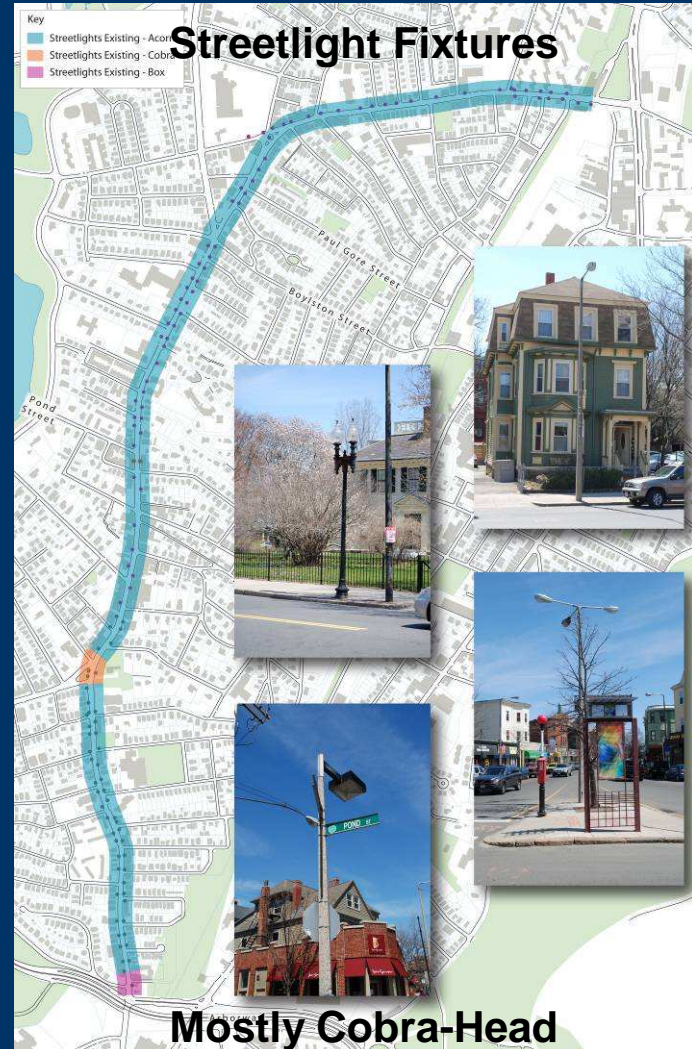


Examples of Consistent Elements

Width of Street & Sidewalk

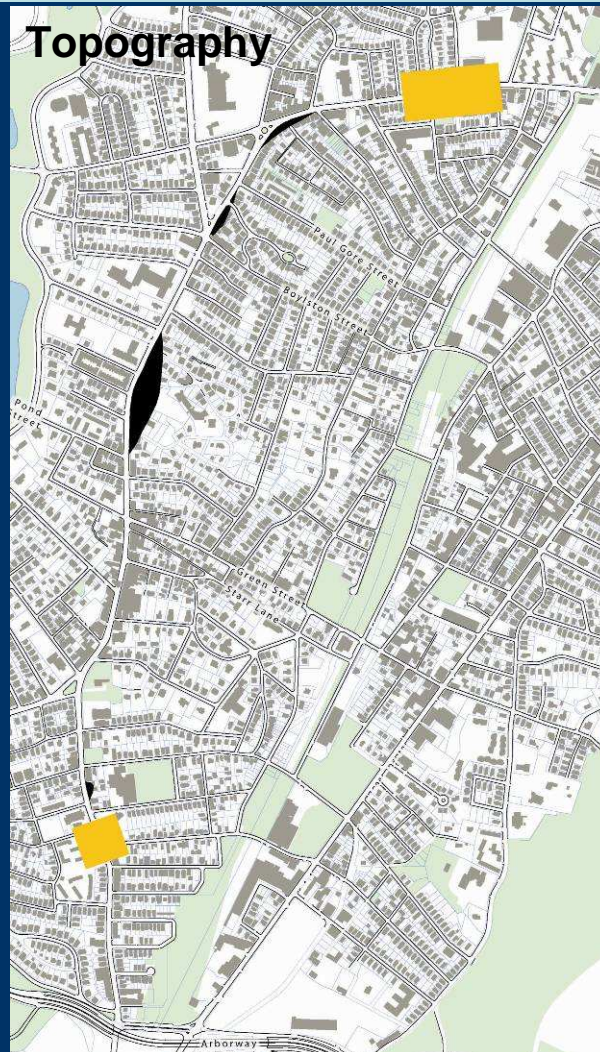
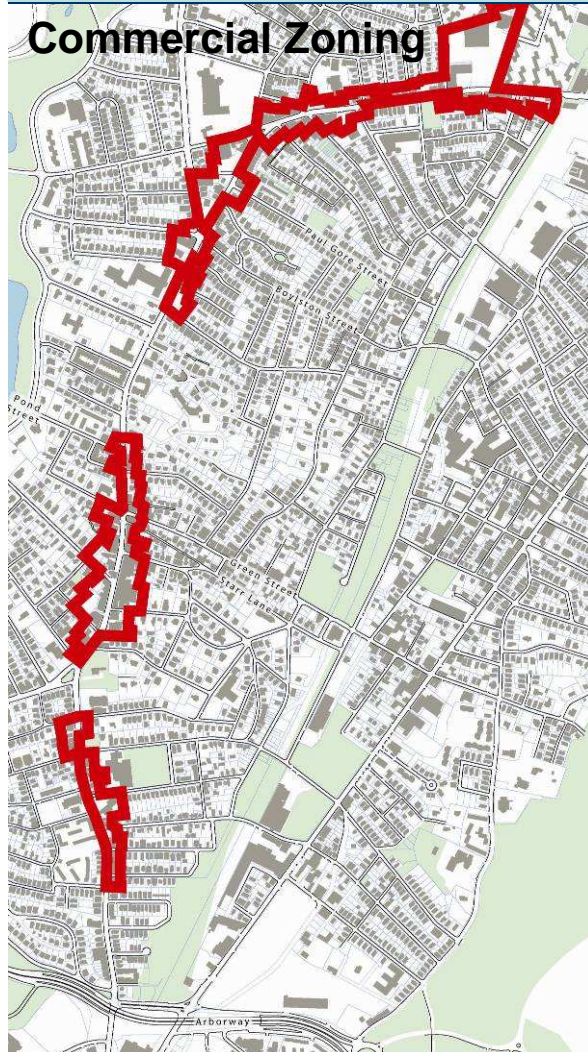


Streetlight Fixtures





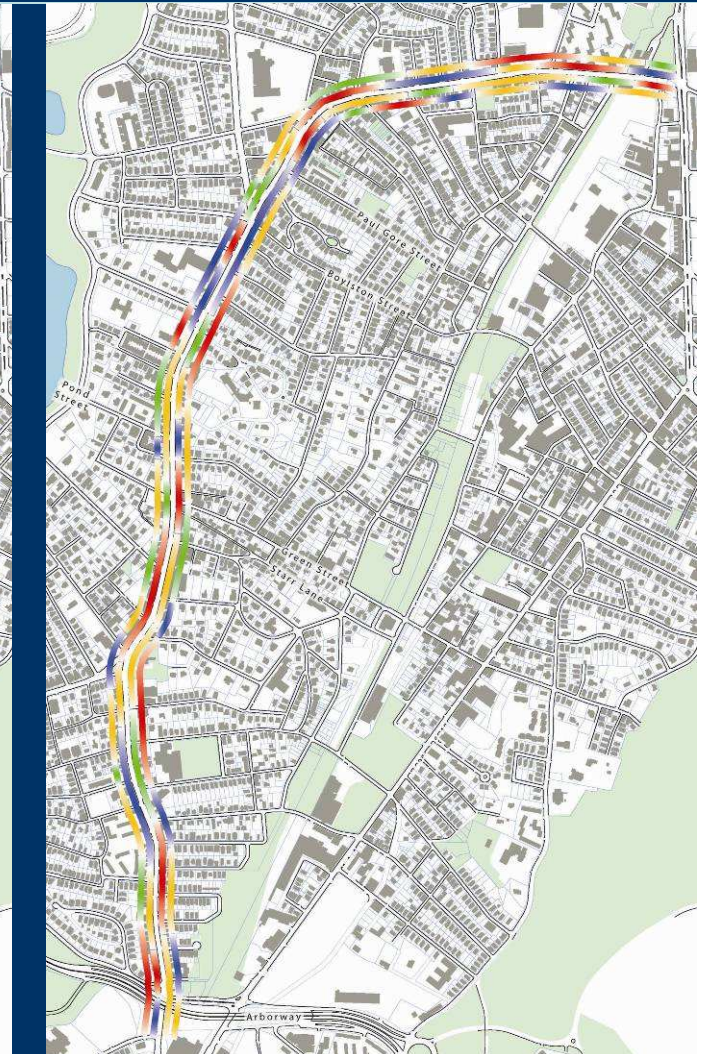
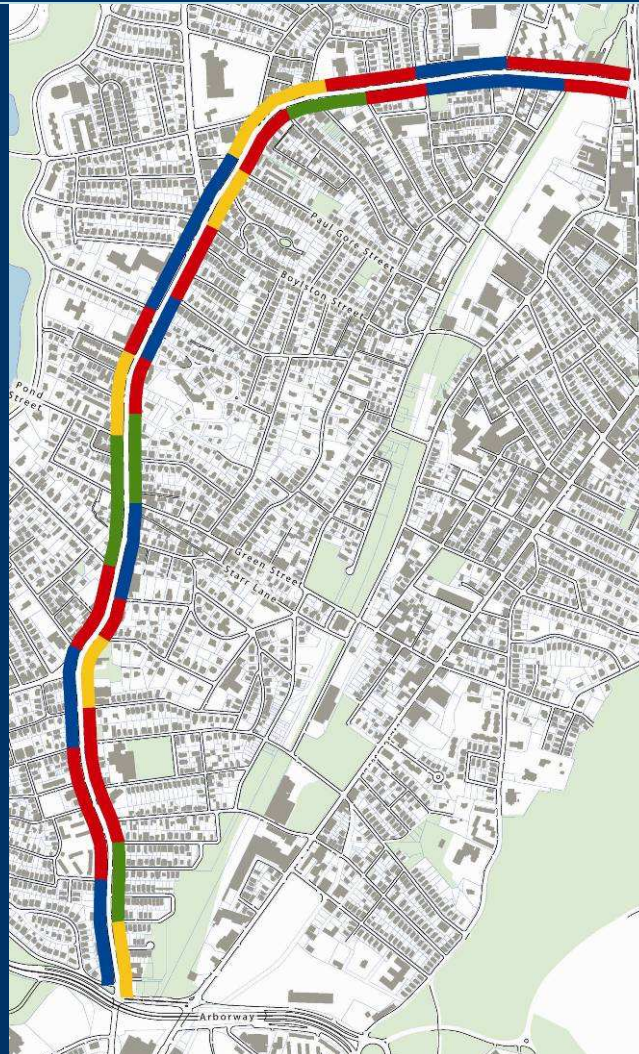
Examples of Changing Elements





Conclusion

Rather than distinct edges, the pattern of character-defining elements is interwoven – ebbing and flowing along the corridor





Streetscape Palette

Major Elements Minor Elements

Street Trees

Street Lights

Signs

Benches

Trash Receptacles

Other Street Furniture

Crosswalk Material

Sidewalk Material

Public Art

Curbs





Street Trees?...Tree Canopy

- combines street trees and trees behind the sidewalk
- “sense of green”
- protection from sun (and rain)
- Goal: C





Jamaica Plain
Centre/South Street
Transportation Action Plan



Issues & Opportunities

- Districts
- Nodes
- Networks
- Landmarks
- Interconnections





Jamaica Plain
Centre/South Street
Transportation Action Plan



Issues & Opportunities

Balance/Modal Planning

- Sustainability
- Bicycles
- Pedestrians
- Parking
- Public Transportation
- Traffic





Vision Statement

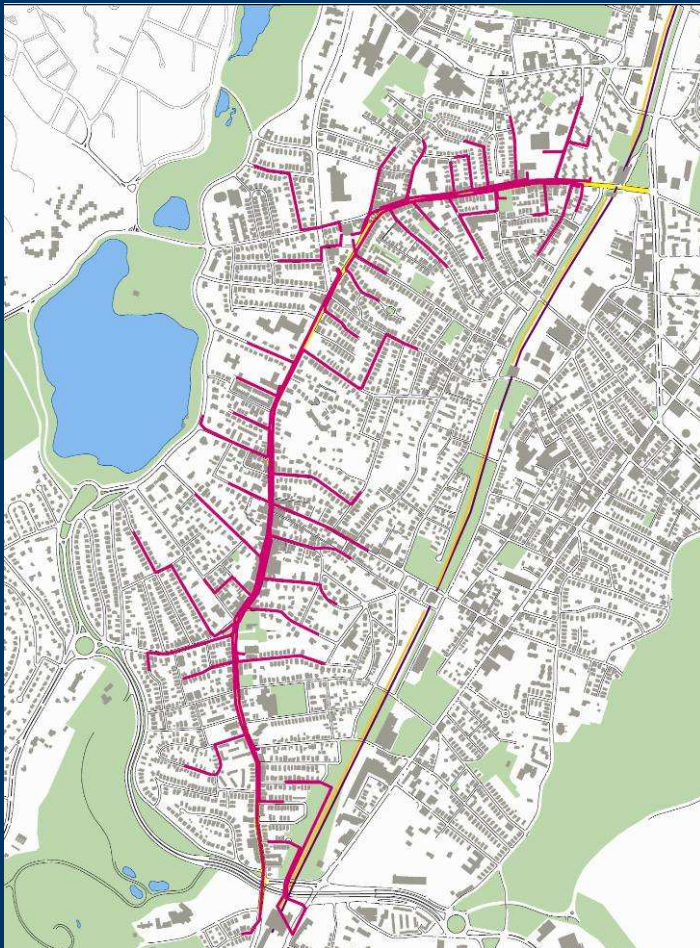
- **Uses and Users**

- Create a safe, convenient bicycling environment, and a safe, convenient pedestrian environment
- Preserve adequate traffic flow throughout the district
- Provide additional resources to support high bicycling interest and activity
- Develop pedestrian nodes and continuous sidewalk paths
- Optimize management of parking resources
- Protect and enhance the neighborhood's transit heritage

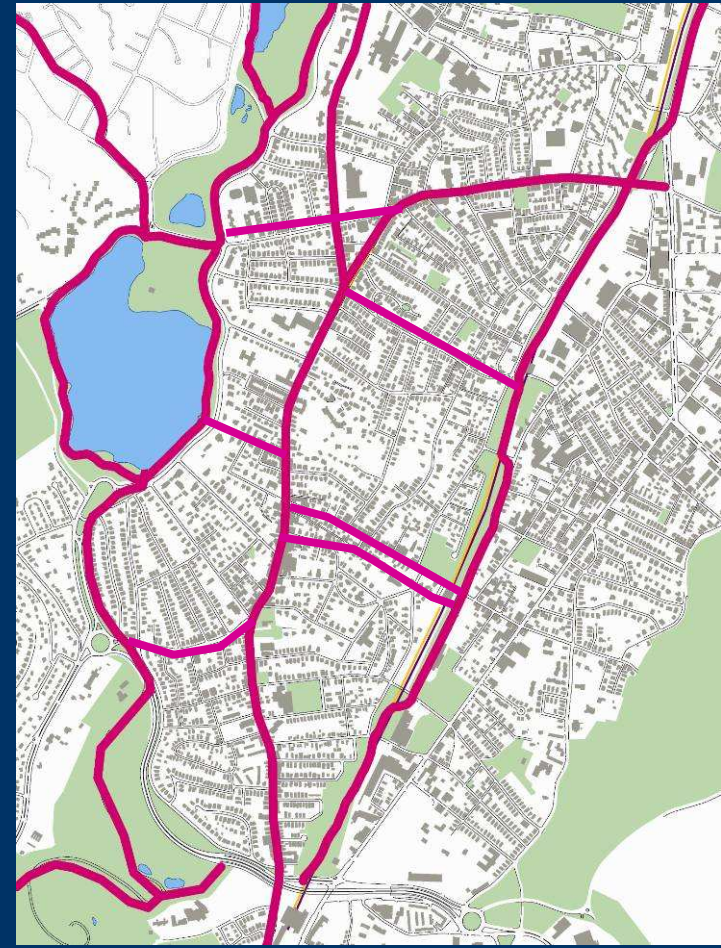


Bicycle Network

Local Connections



Regional Connections





Toronto – Bloor Street Study

Bike Lanes, On-Street Parking and Business

A Study of Bloor Street in Toronto's Annex Neighbourhood



February 2009

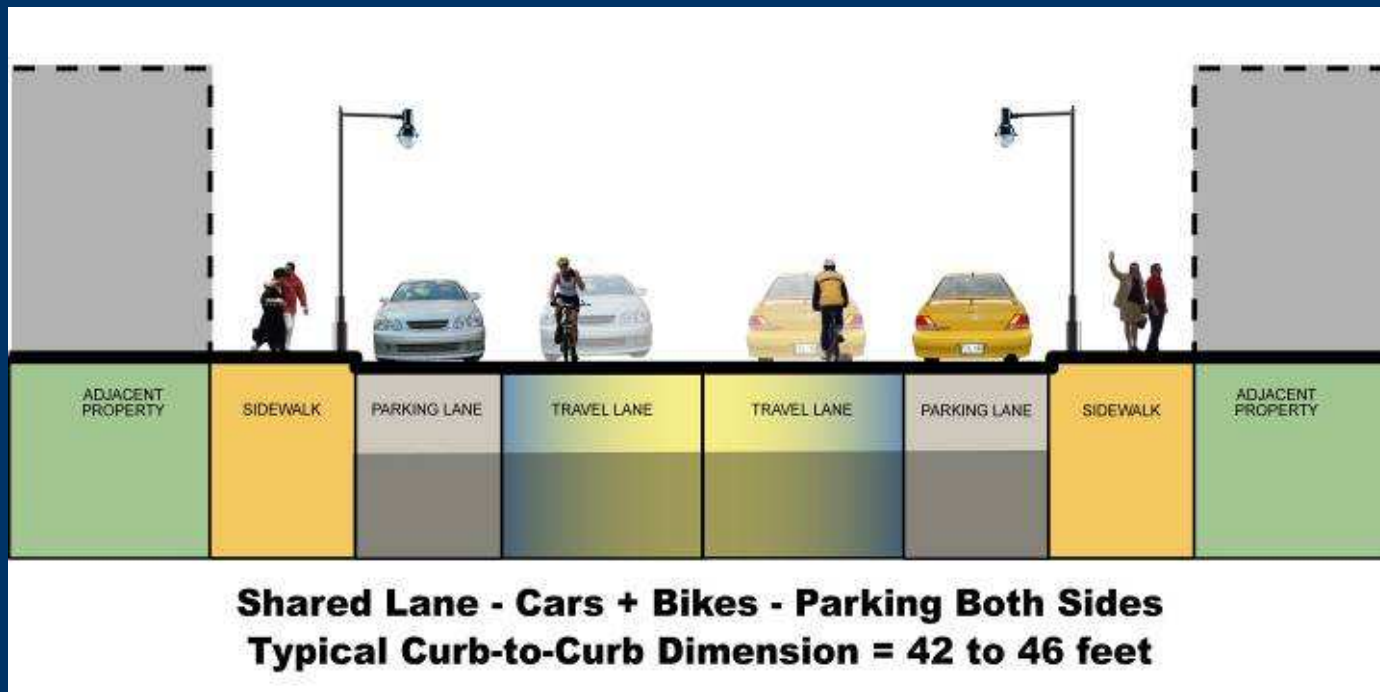


Toronto – Bloor Street Study

- Resulting data:
 - On-street parking use in commercial zones
 - Customer patronage by travel mode – car, public transportation, bicycle, walking
 - Income to businesses by travel mode
- Goal:
 - Rationale for space allocation among parking, bicycle lanes and sidewalks



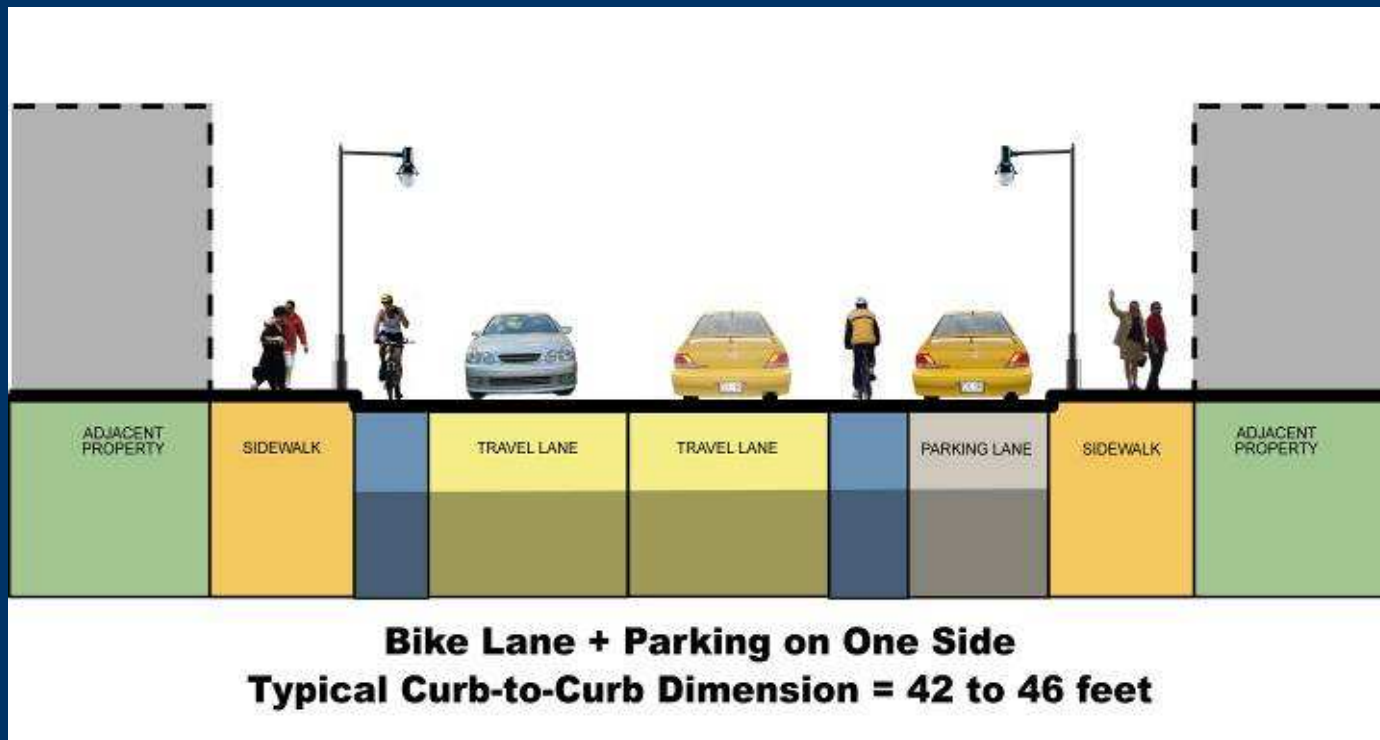
Balance: Pedestrians, Parking, Bicycles



Existing Conditions



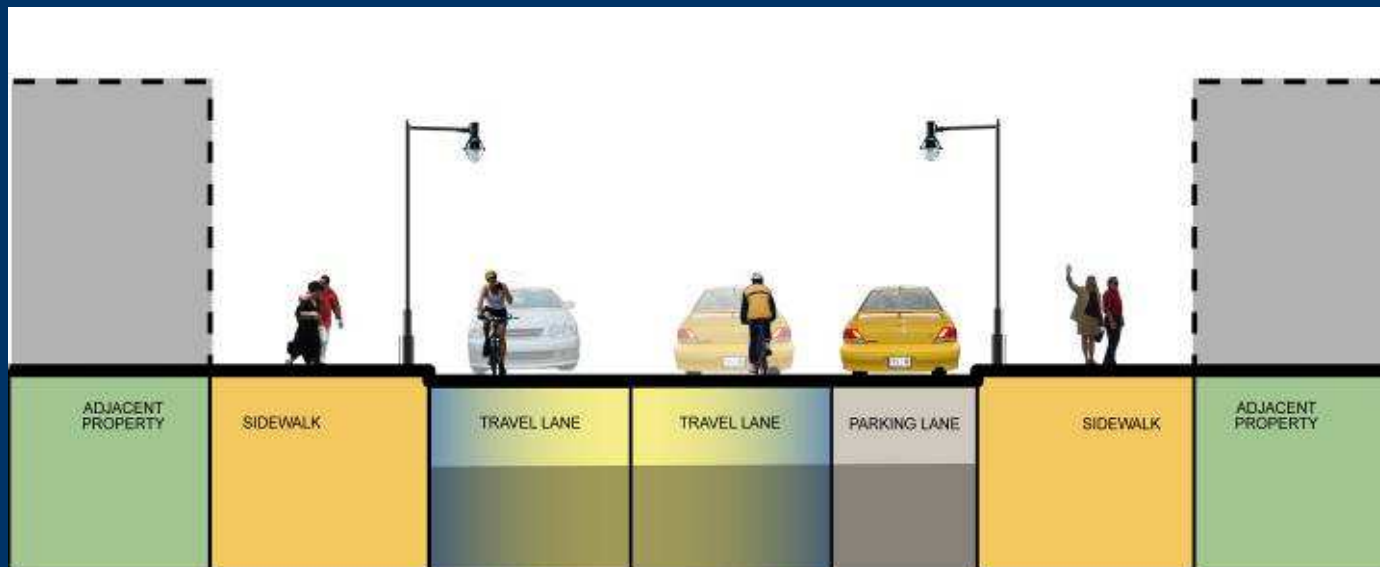
Balance: Pedestrians, Parking, Bicycles



Bicycle Lanes



Balance: Pedestrians, Parking, Bicycles



Shared Lane - Cars + Bikes - Parking One Sides
Typical Curb-to-Curb Dimension = 34 to 38 feet

Wider Sidewalks



Where Do We Go from Here?

Next Steps:

- Finalize vision statement
- Select a streetscape palette
- Select areas for detailed design

Later....

- Identify quick fixes
- Identify short-term improvement
- Identify long-term improvements