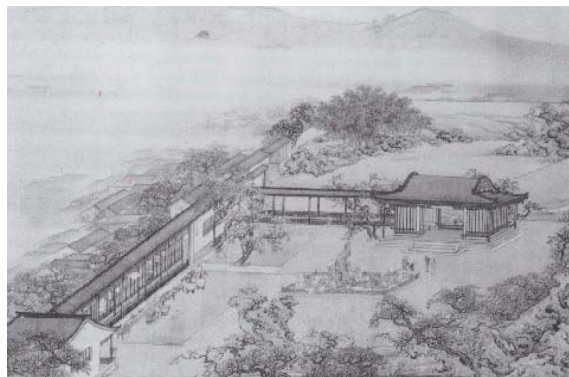


MARY SOO HOO (CHINATOWN GATEWAY) PARK



DESIGN INFLUENCES



COMMUNITY
INPUT

SITE
CONDITIONS

HISTORY AND
CULTURE OF
CHINATOWN



COMMUNITY INPUT



COMMUNITY INPUT

CULTURE AND HISTORY

OBJECTIVES

TELL THE STORY OF CHINATOWN

MEMORIALIZE SIGNIFICANT EVENTS/PEOPLE

CELEBRATE CHINESE HORTICULTURE

DISPLAY ON TOWER

MARY SOO HOO (CHINATOWN GATEWAY) PARK

EDUCATION AND RECREATION

OBJECTIVES

EXPLORE NEIGHBORHOOD EDUCATIONAL OPPORTUNITIES

CREATE LARGER PLAY ENVIRONMENT

ENCOURAGE INTERACTIVE PLAY

PROVIDE PASSIVE RECREATIONAL OPPORTUNITIES

EXCHANGE INFORMATION

MARY SOO HOO (CHINATOWN GATEWAY) PARK

SUSTAINABILITY AND PRODUCTIVITY

OBJECTIVES

BRING MORE GREEN INTO CHINATOWN

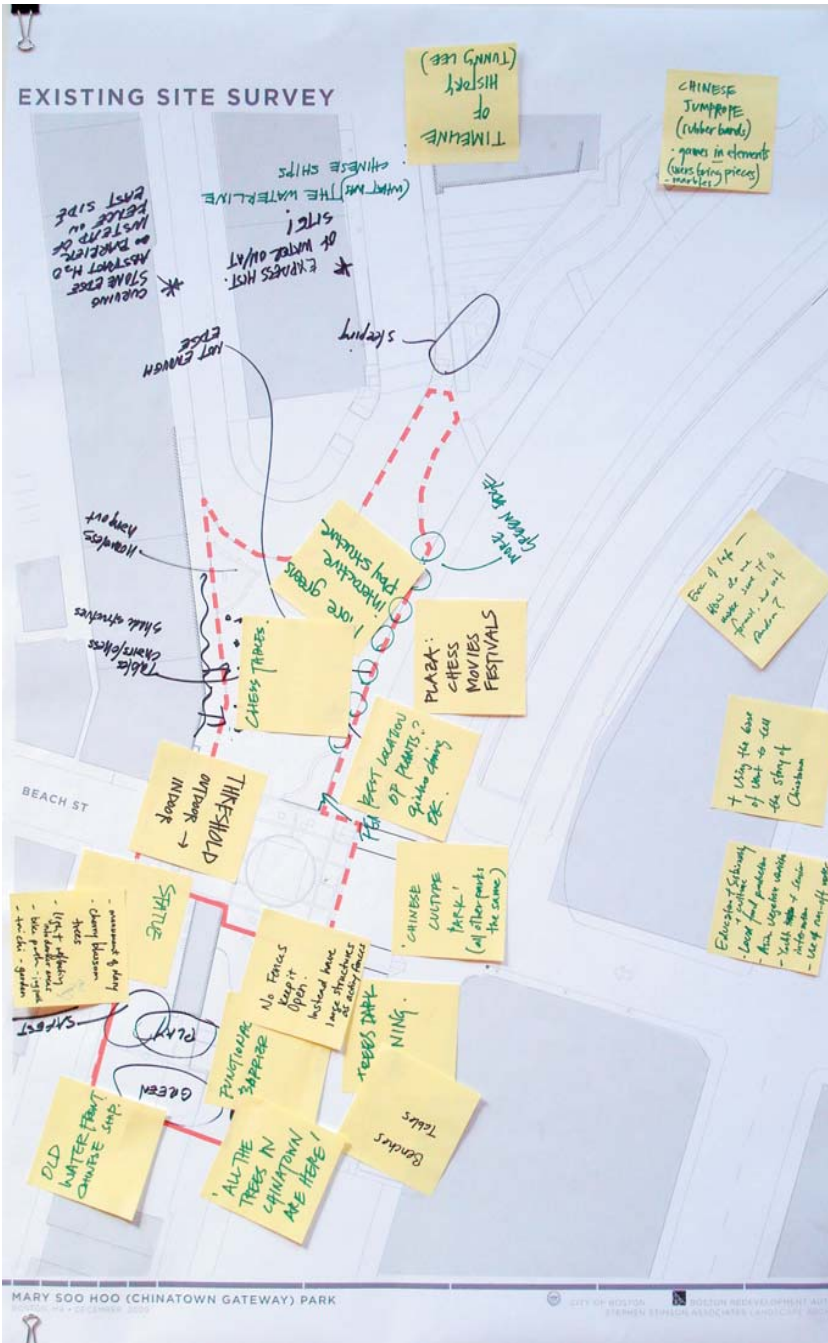
CELEBRATE ECOLOGY OF WATER

BRING LIGHT TO SHADED AREAS

EDUCATE VISITORS ON ECOLOGICAL FEATURES

MARY SOO HOO (CHINATOWN GATEWAY) PARK

COMMUNITY INPUT



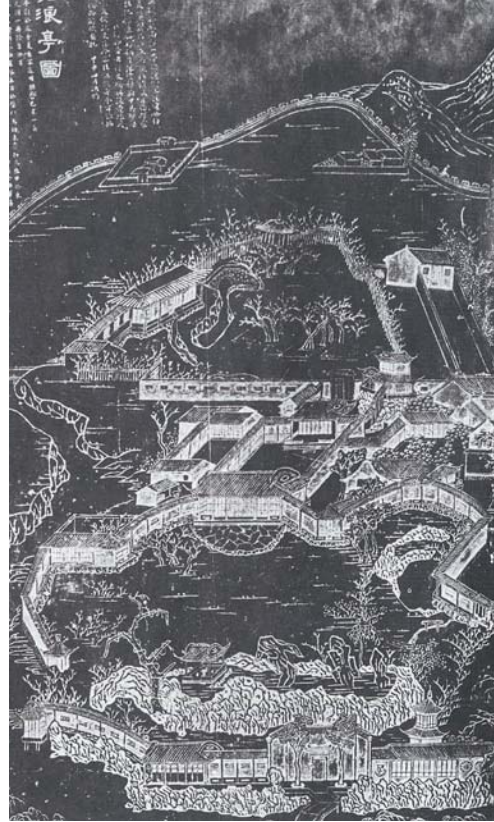
THEMES	OBJECTIVES	IMPORTANCE	COMMENTS
	HISTORY AND CULTURE		
CULTURE AND HISTORY	TELL THE STORY OF CHINATOWN	3	On the bottom of vent tower
	MEMORIALIZE SIGNIFICANT EVENTS/ PEOPLE	9	
		5	Statue of Mary Soo Hoo (main entrance of park)
		13	Remove or minimize Tianenmen Square Memorial
		7	No political gathering
			Tranquility
			Chinese statue for taking pictures
	CELEBRATE CHINESE HORTICULTURE	14	
		2	Grow Asian vegetables
			Nanliang garden (example of Chinese Horticulture)
	DISPLAY ON TOWER	5	Time line of Chinatown on base of vent tower
		2	Change the existing mural into a Chinese mural (green wall?)
		1	Should not distract drivers
	OTHERS	1	Chinese cultural symbol (Chinese culture park)
		1	Feng Shui
		1	100 Fortunes, 100 Longevity
		1	Gateway to port, travel (view corridor from bus terminal)
		2	Unite parks - paving or water (bring the water from Chinatown park)
	EDUCATION AND RECREATION		
EDUCATION AND RECREATION	EXPLORE NEIGHBORHOOD PARTNERSHIPS	5	Mary Soo Hoo's daughter - yes Quincy school would love an outdoor classroom
	CREATE LARGER PLAY ENVIRONMENT	10	Climbing structure
		2	Play on both sides of tower
		2	"Movie in the Park" - project movie on the Hudson St side
	ENCOURAGE INTERACTIVE PLAY	2	
			Play space should not be a "structure"
	PROVIDE PASSIVE RECREATIONAL OPPORTUNITIES	7	Chinese games
			Close benches for talking
			Movable tables + chairs
			Shorter benches
	EXCHANGE INFORMATION	3	
	OTHERS	4	Fence on east side (it is a functional fence - welcoming)
		1	Not enough activities on the plaza



COMMUNITY INPUT - GOALS



EDUCATION &
SUSTAINABILITY



HISTORY & CULTURE



COMMUNITY
GATHERING & PLAY

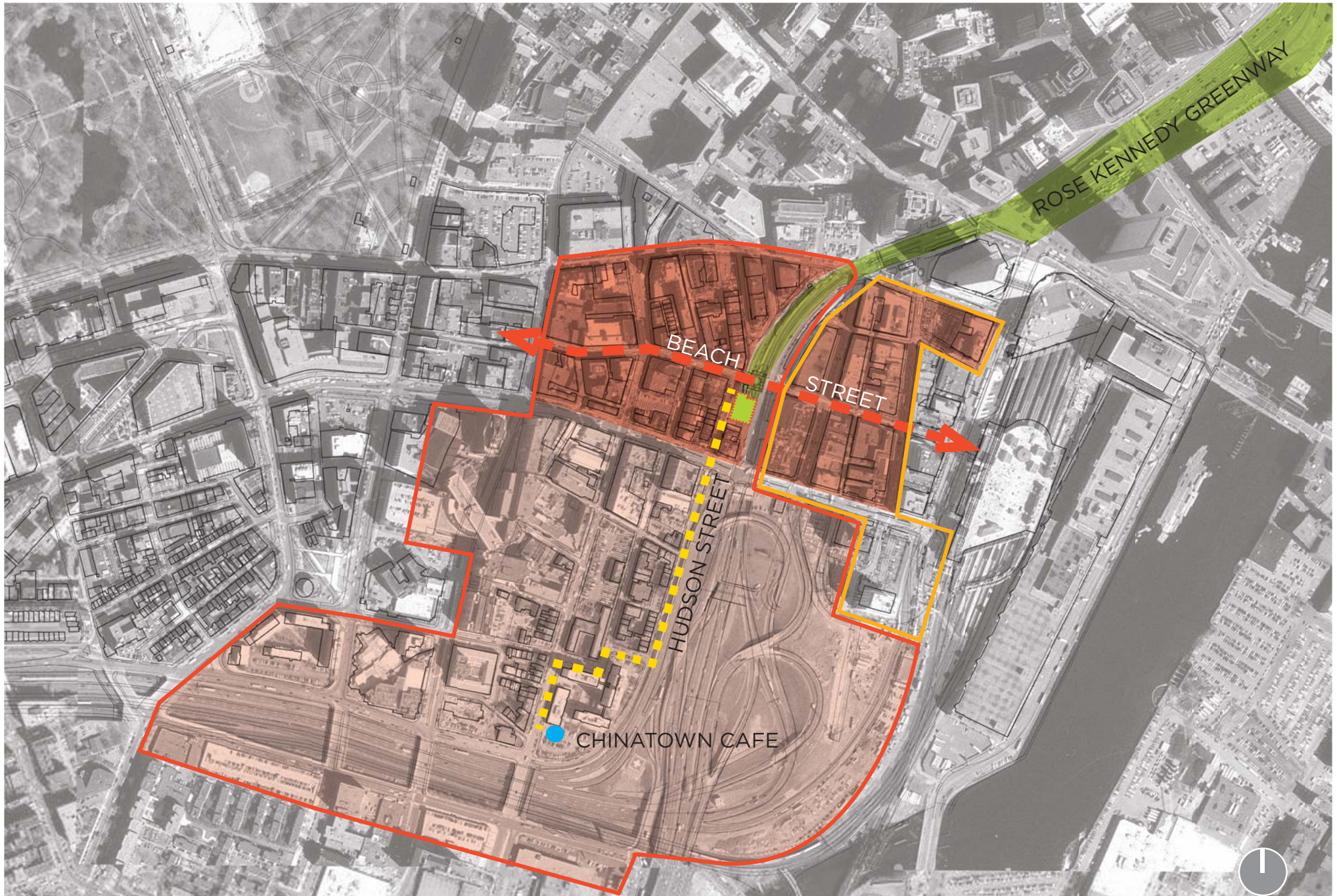
COMMUNITY INPUT - CONCLUSIONS



SITE CONDITIONS



SITE CONDITIONS - URBAN CONTEXT

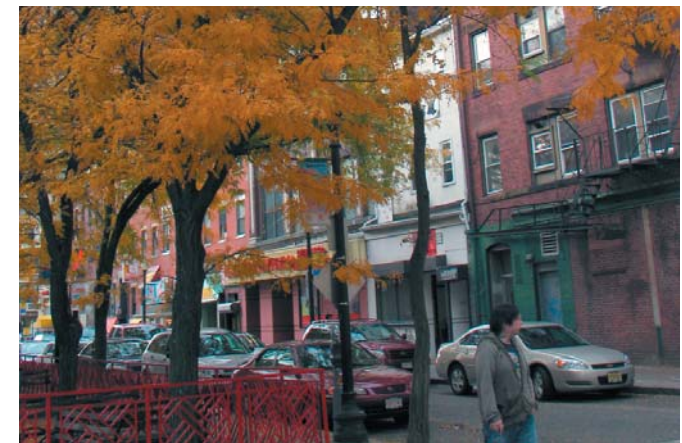
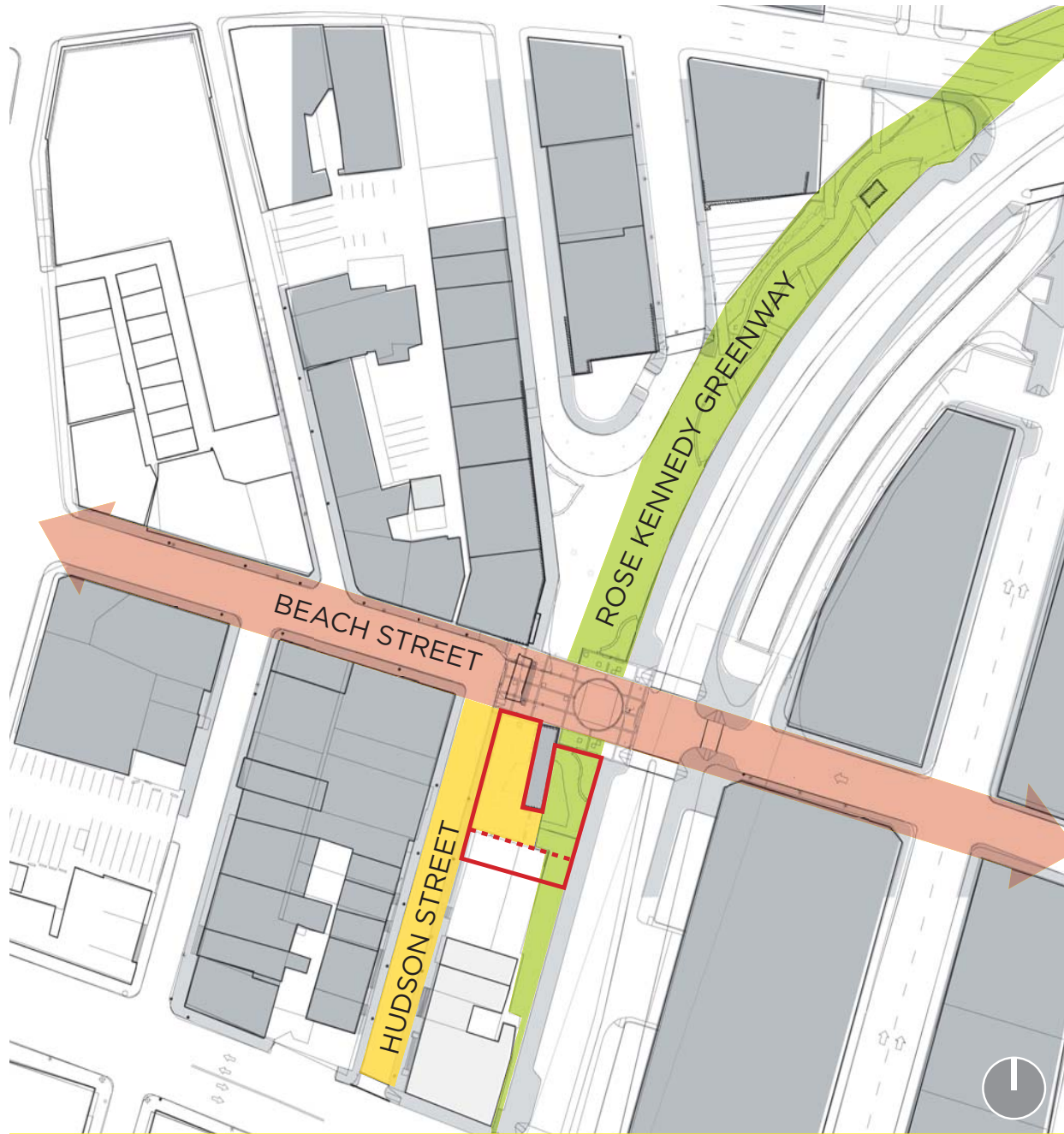


MARY SOO HOO (CHINATOWN GATEWAY) PARK

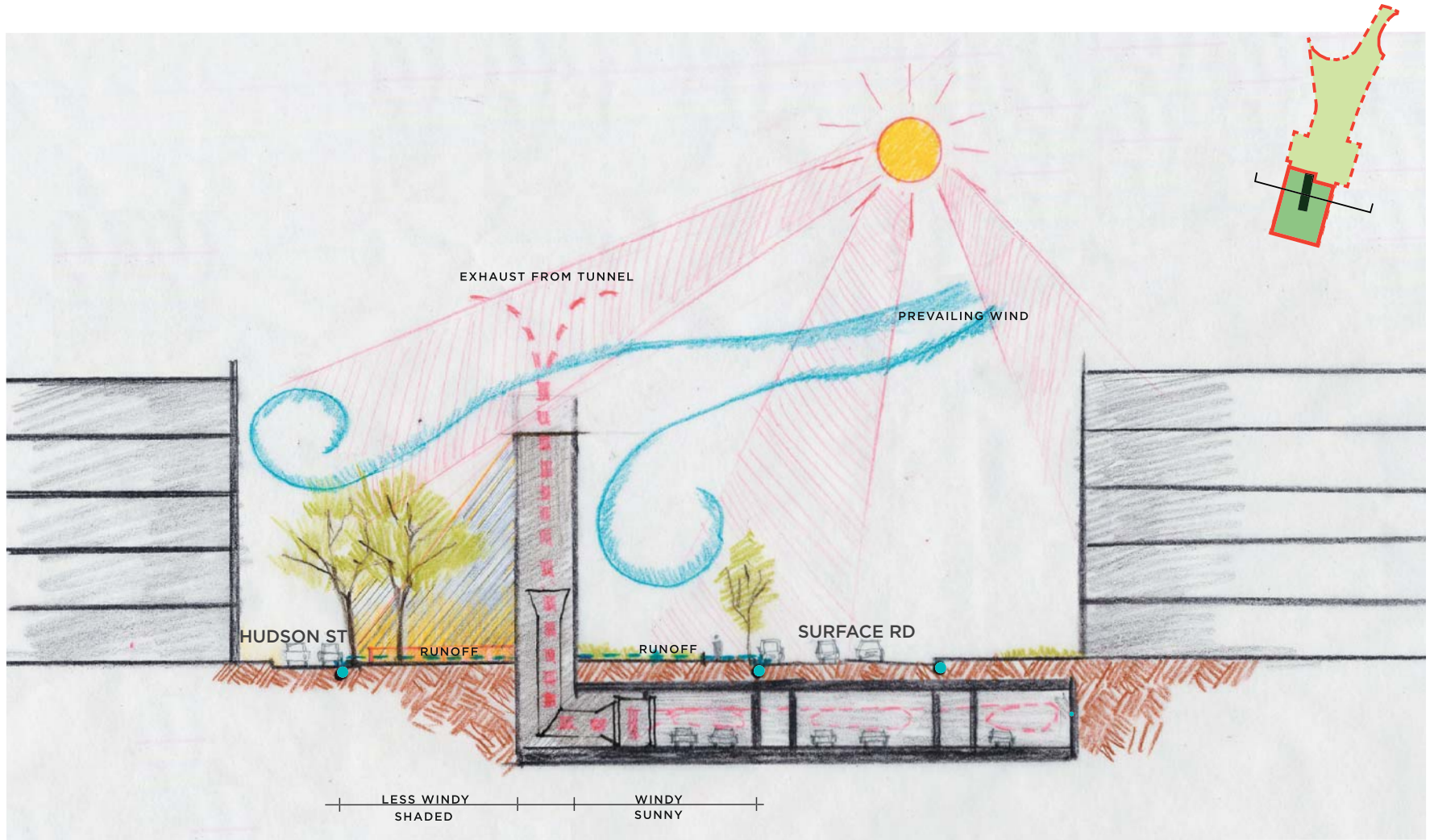


CITY OF BOSTON BOSTON REDEVELOPMENT AUTHORITY
STEPHEN STIMSON ASSOCIATES LANDSCAPE ARCHITECTS

SITE CONDITIONS - ADJACENCIES



SITE CONDITIONS - MICROCLIMATES SECTION



SITE CONDITIONS - MICROCLIMATES

WEST SIDE (HUDSON ST)



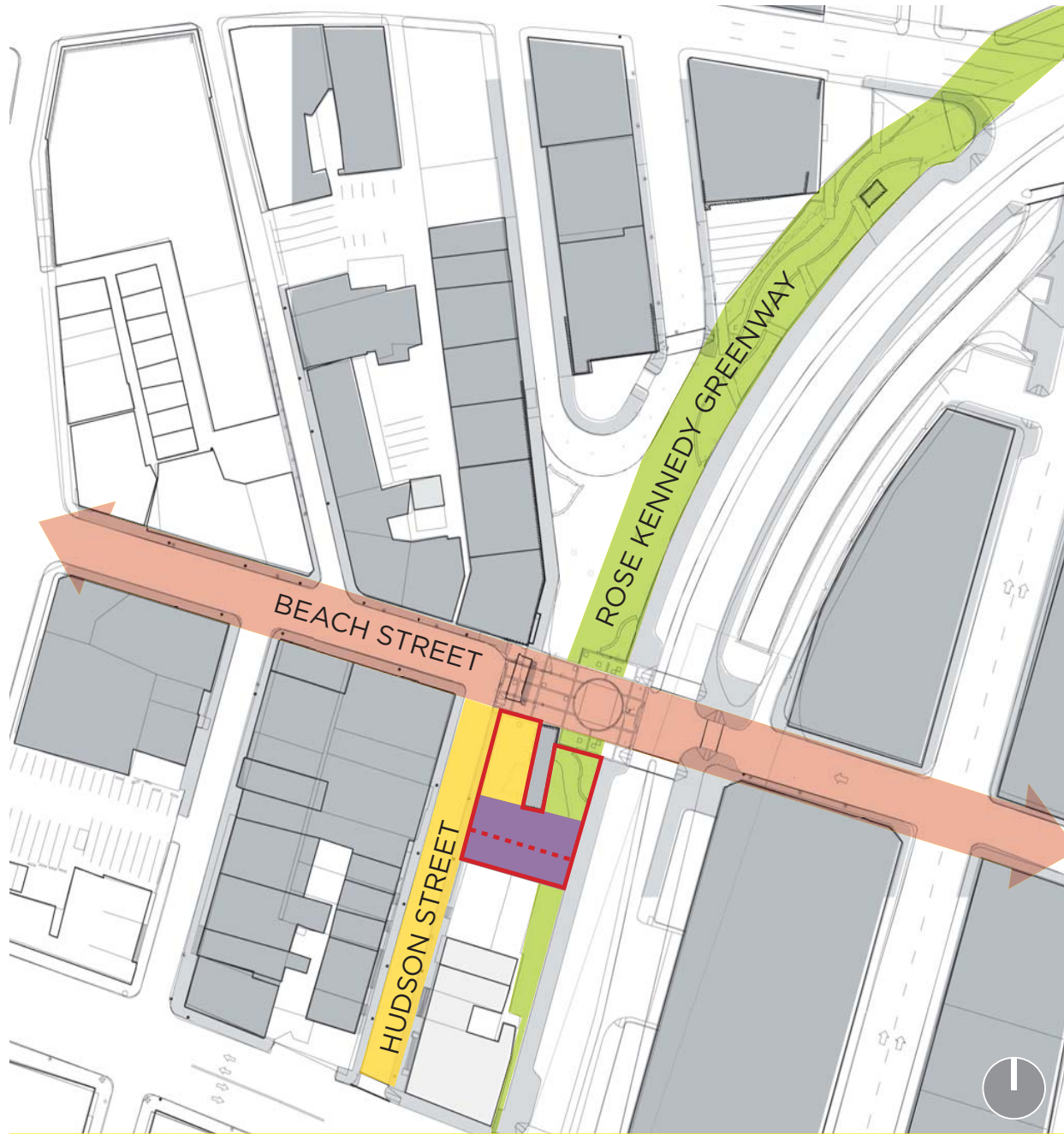
SHELTERED
WEST SIDE OF PARK IS ENCLOSED, SHADED, AND
NEIGHBORHOOD SCALE

EAST SIDE (SURFACE RD)

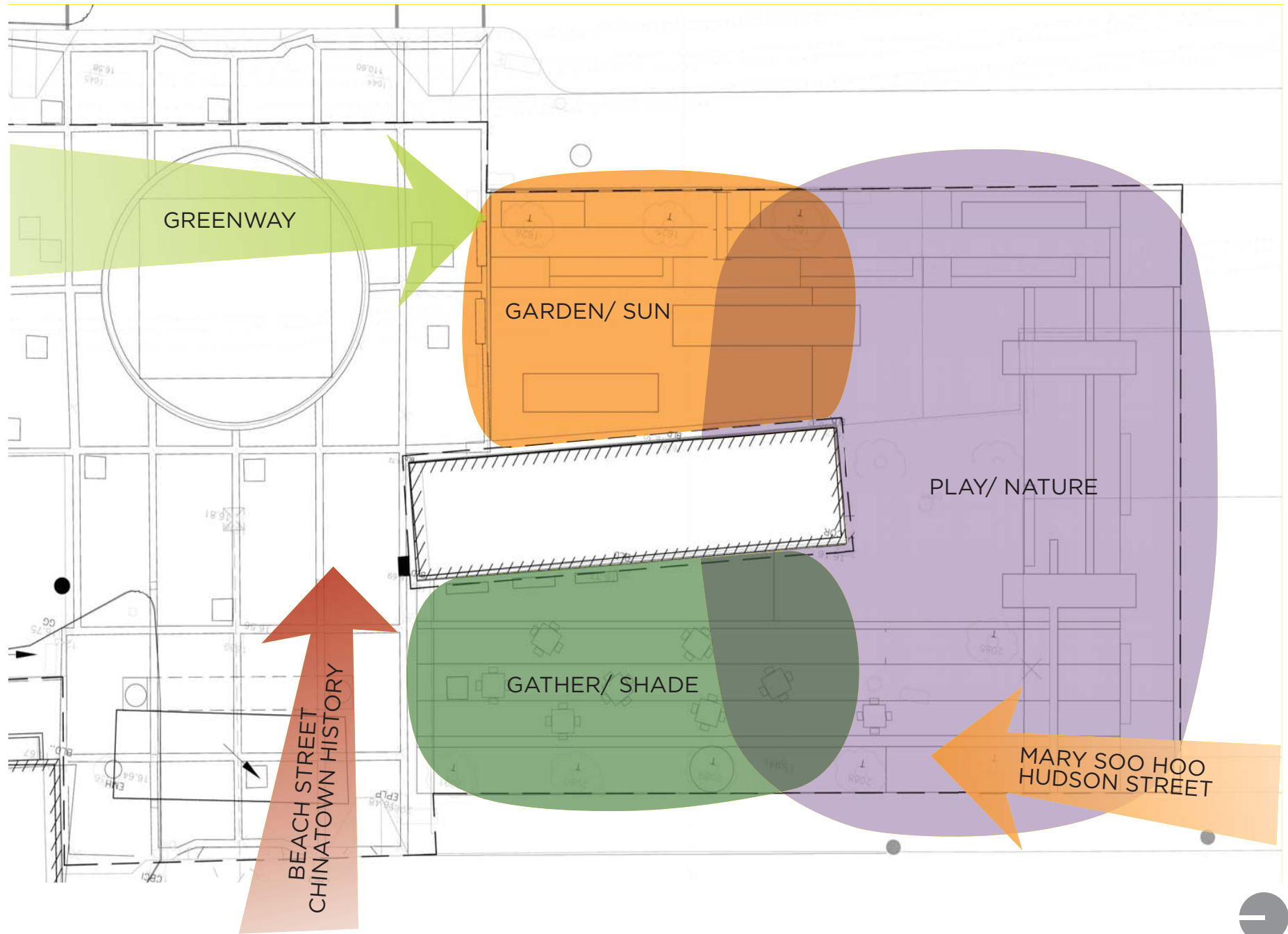


SUNNY
EAST SIDE OF PARK IS EXPOSED AND OPEN TO THE
VAST SPACES OF CHINATOWN PLAZA AND SURFACE
ROAD

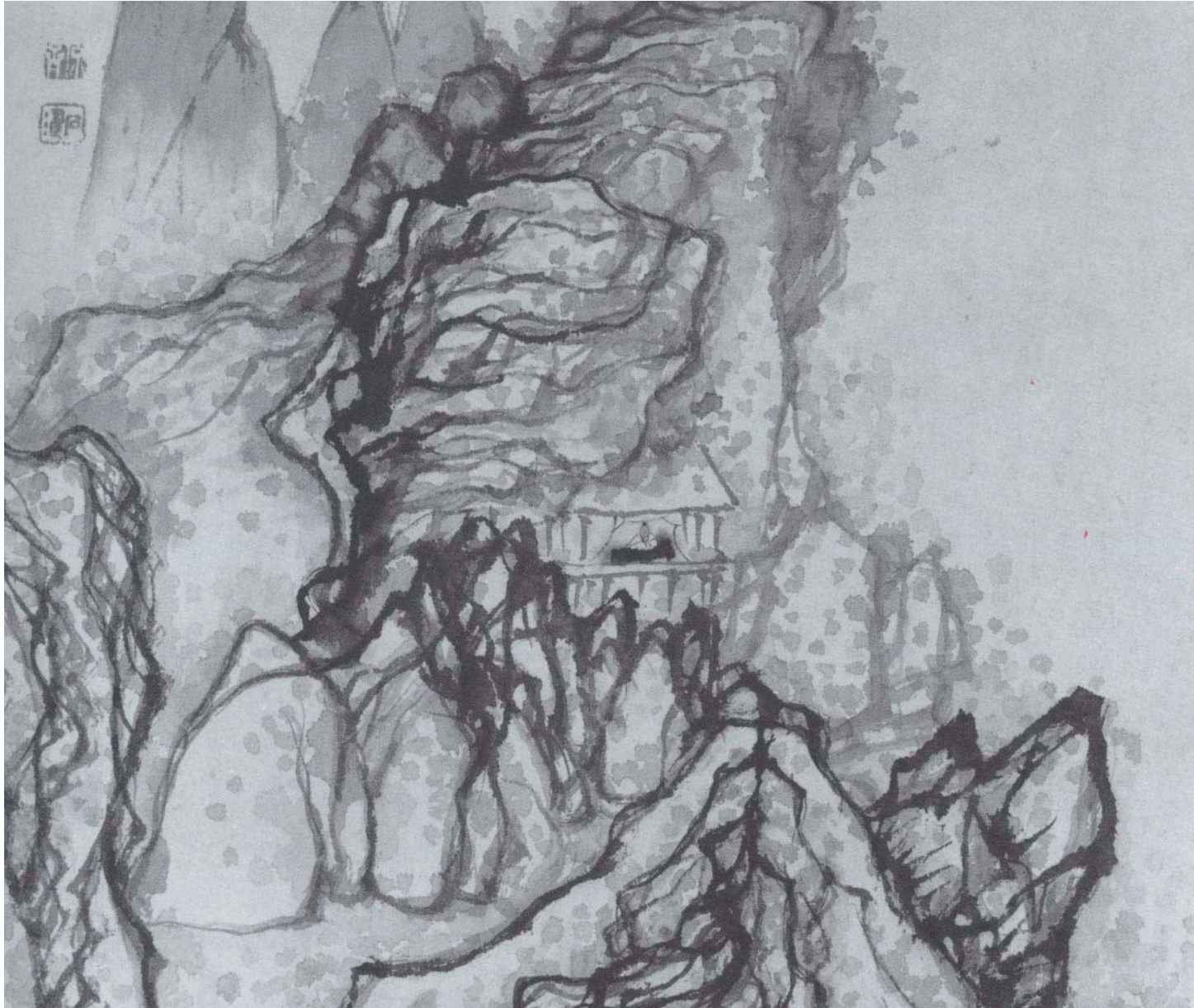
SITE CONDITIONS - LEE PARCEL



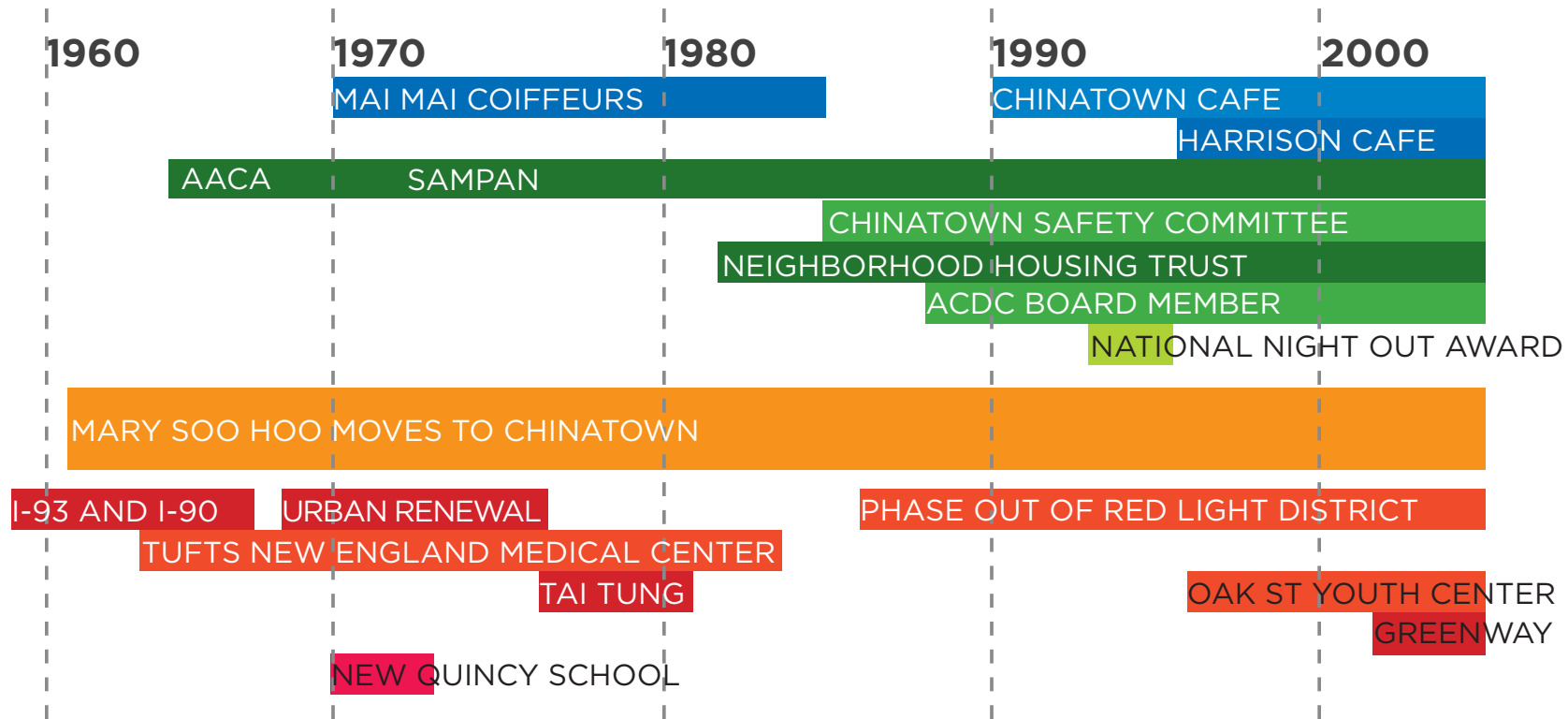
COMMUNITY INPUT AND SITE CONDITIONS CONCLUSION



HISTORY AND CULTURE OF CHINATOWN



MARY SOO HOO - CELEBRATION OF HER LIFE



HISTORY AND CULTURE - TRADITIONAL GARDENS



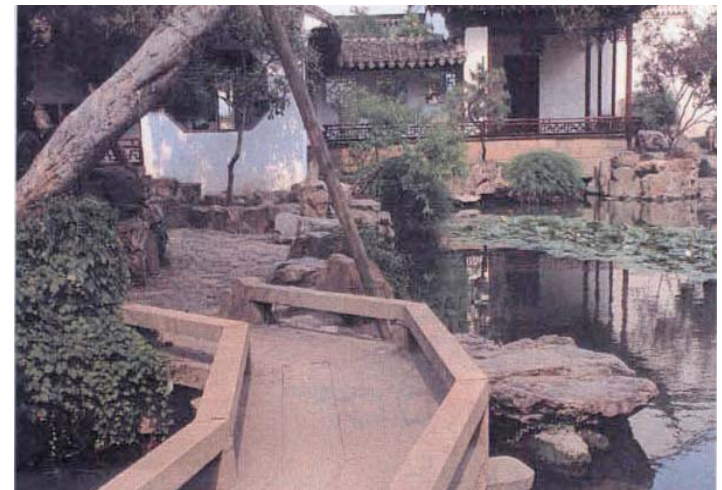
CELEBRATION OF SEASONAL CHANGE



CONTRAST OF "NATURAL" AND MAN MADE FORMS

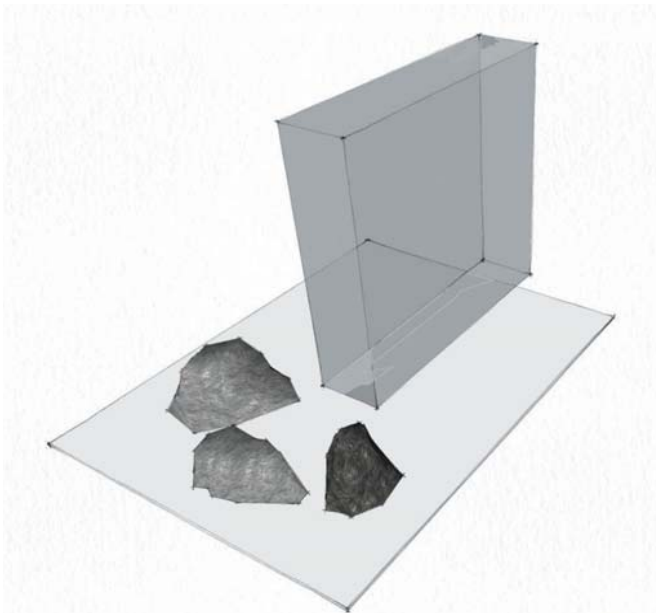


FRAMING OF VIEWS/ ENCLOSURE

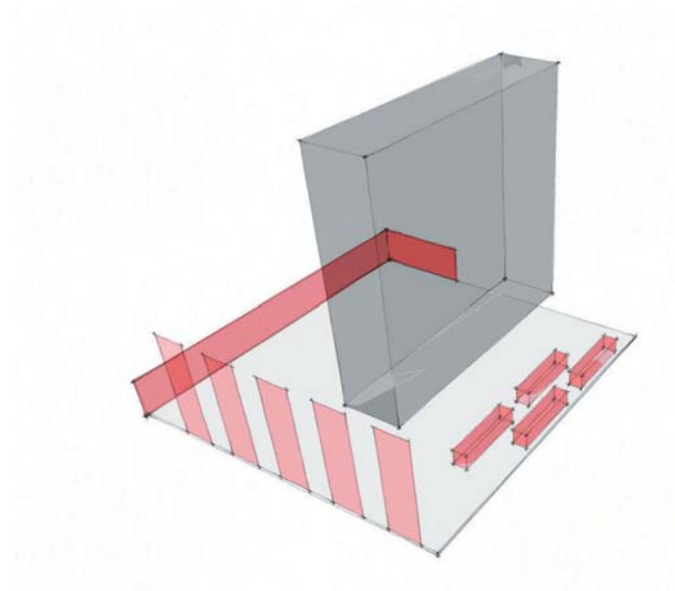


SURPRISE OR UNFOLDING EXPERIENCE

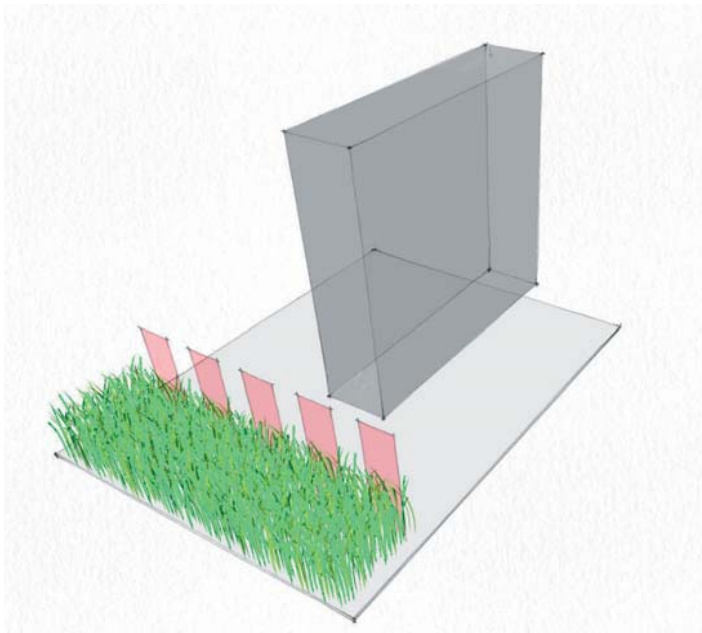
HISTORY AND CULTURE - GARDEN ELEMENTS



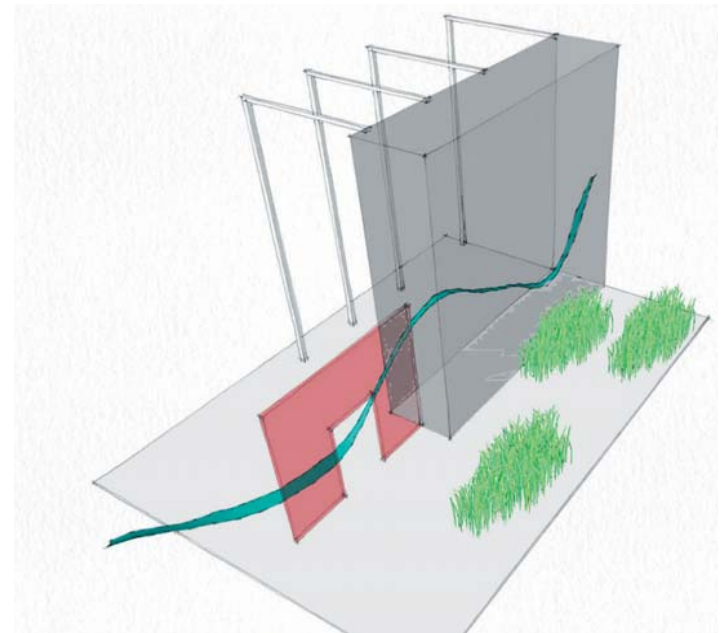
NATURAL VS. MAN MADE FORMS



ENCLOSURE OF SPACE



FRAMED VIEWS

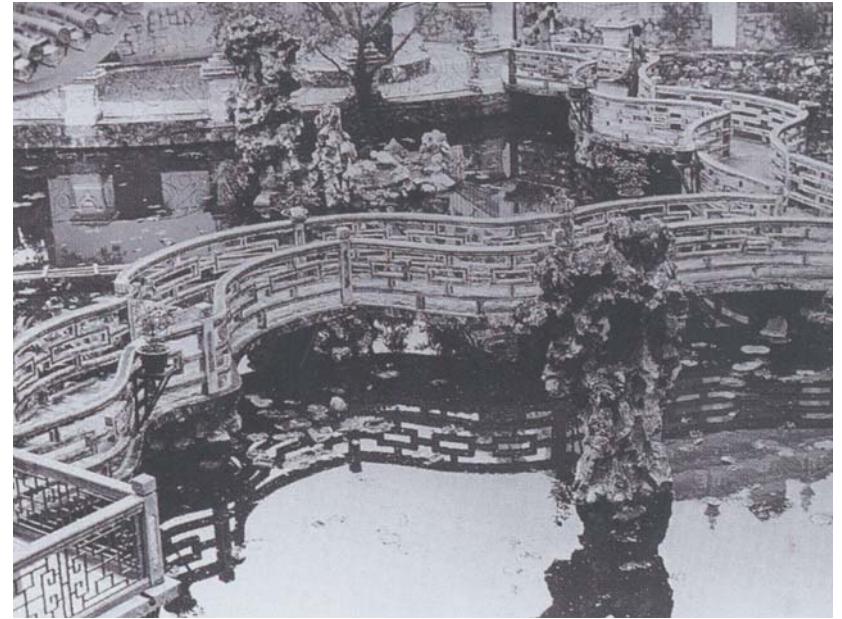


UNFOLDING EXPERIENCE

HISTORY AND CULTURE - CELEBRATE SEASONS



SPRING - GARDEN OF FLOWERS



SUMMER - GARDEN OF WATER



AUTUMN - GARDEN OF LIGHT

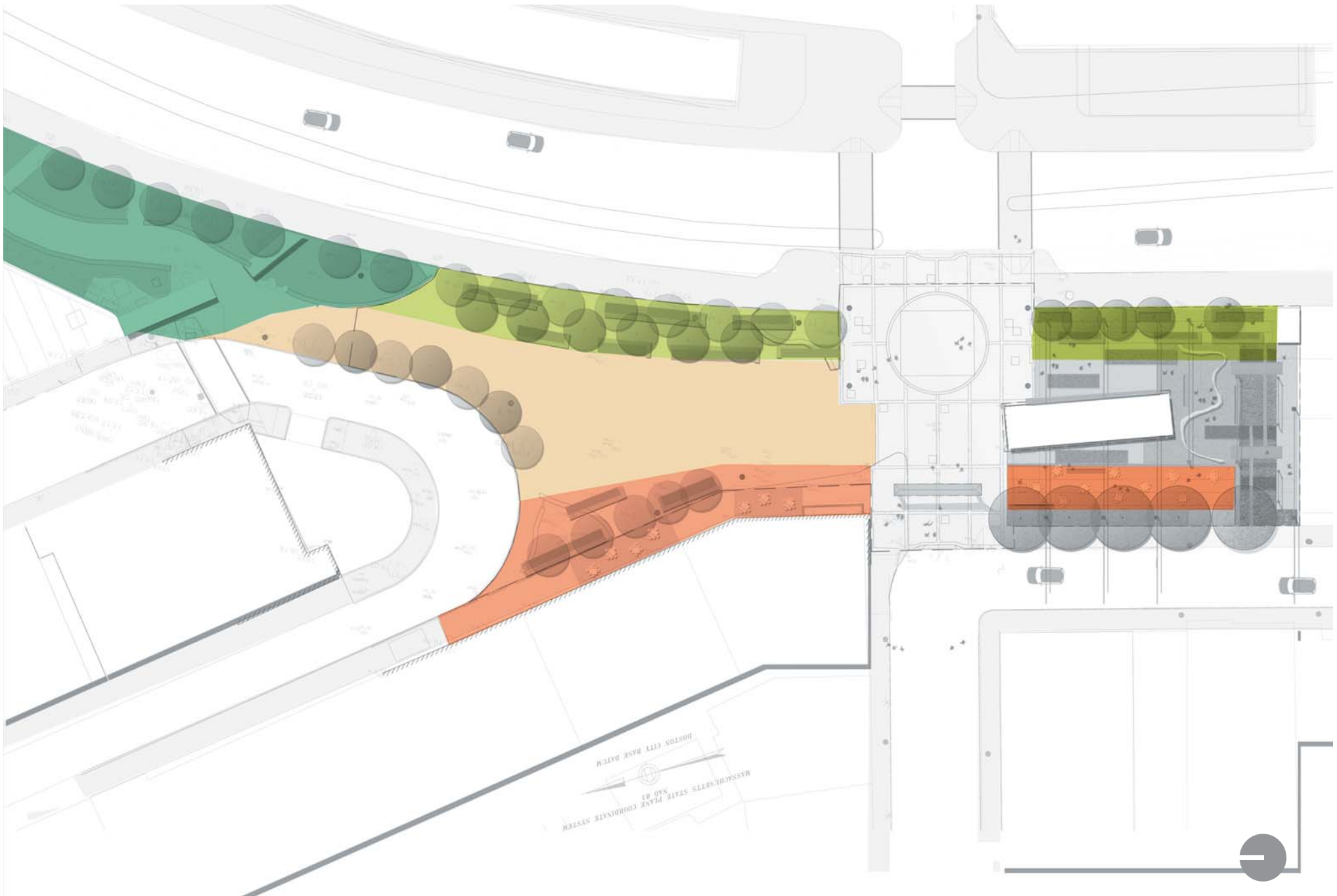


WINTER - GARDEN OF SNOW

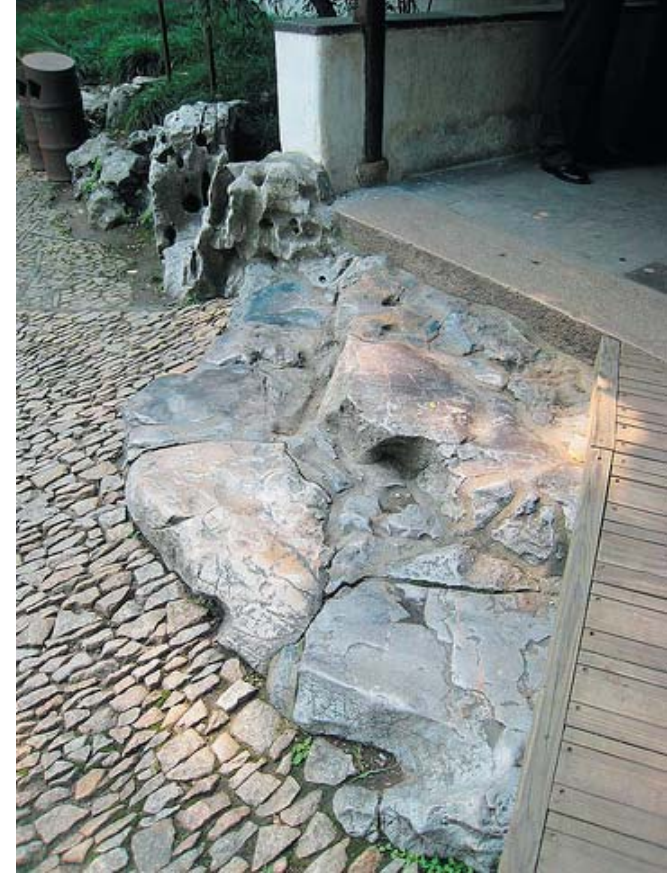
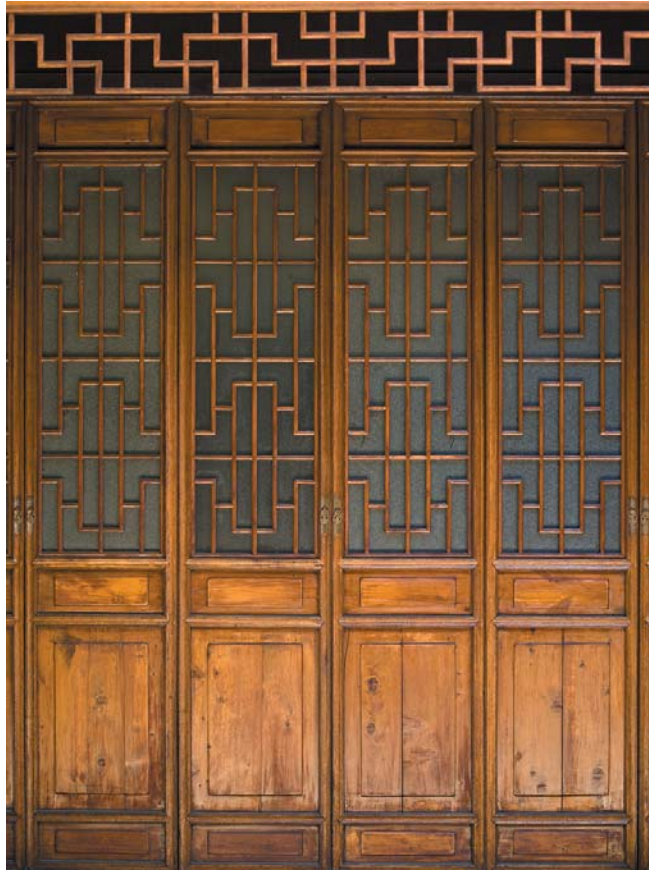
DESIGN CONCEPTS



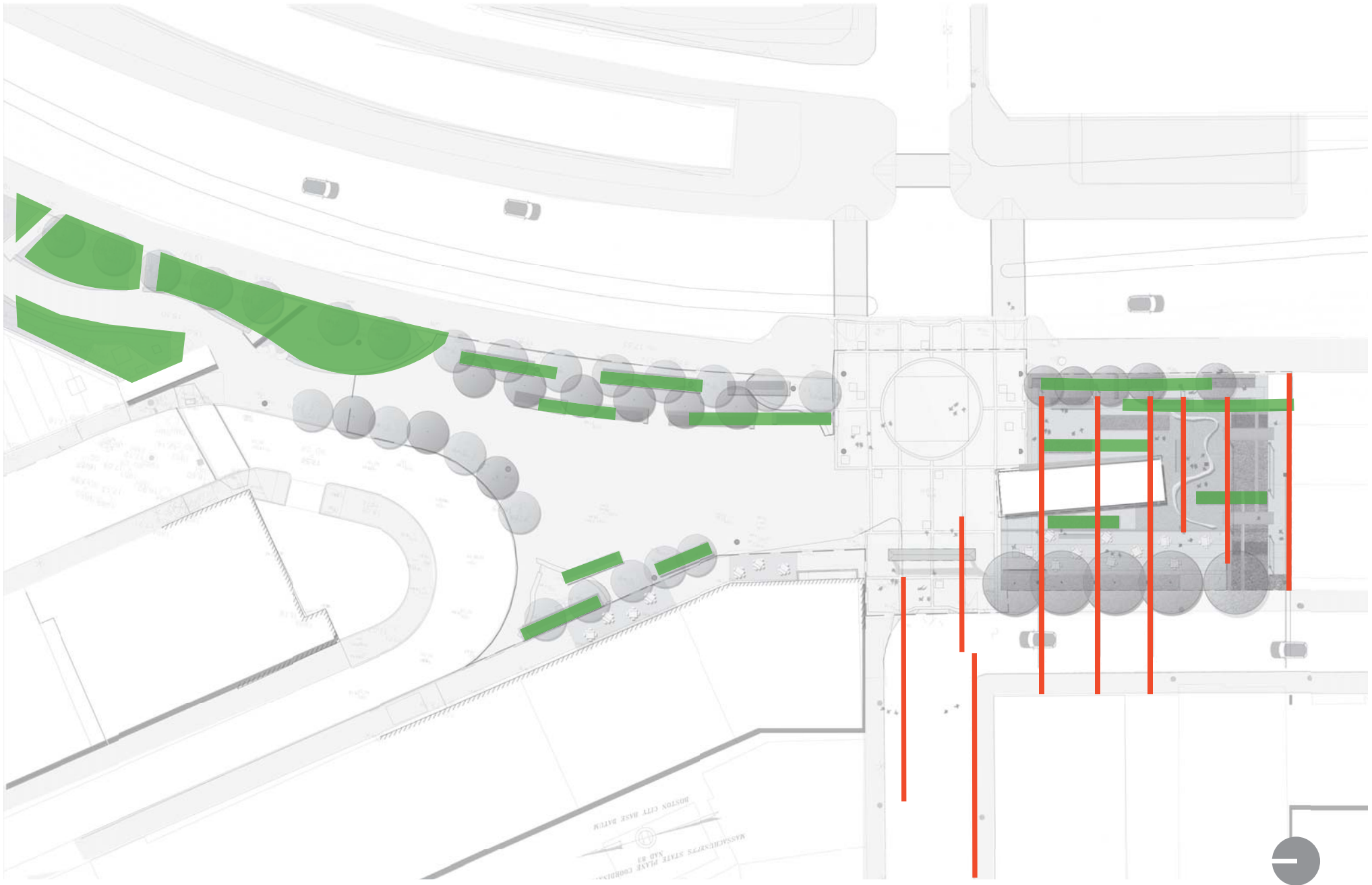
LARGER SITE CONCEPT



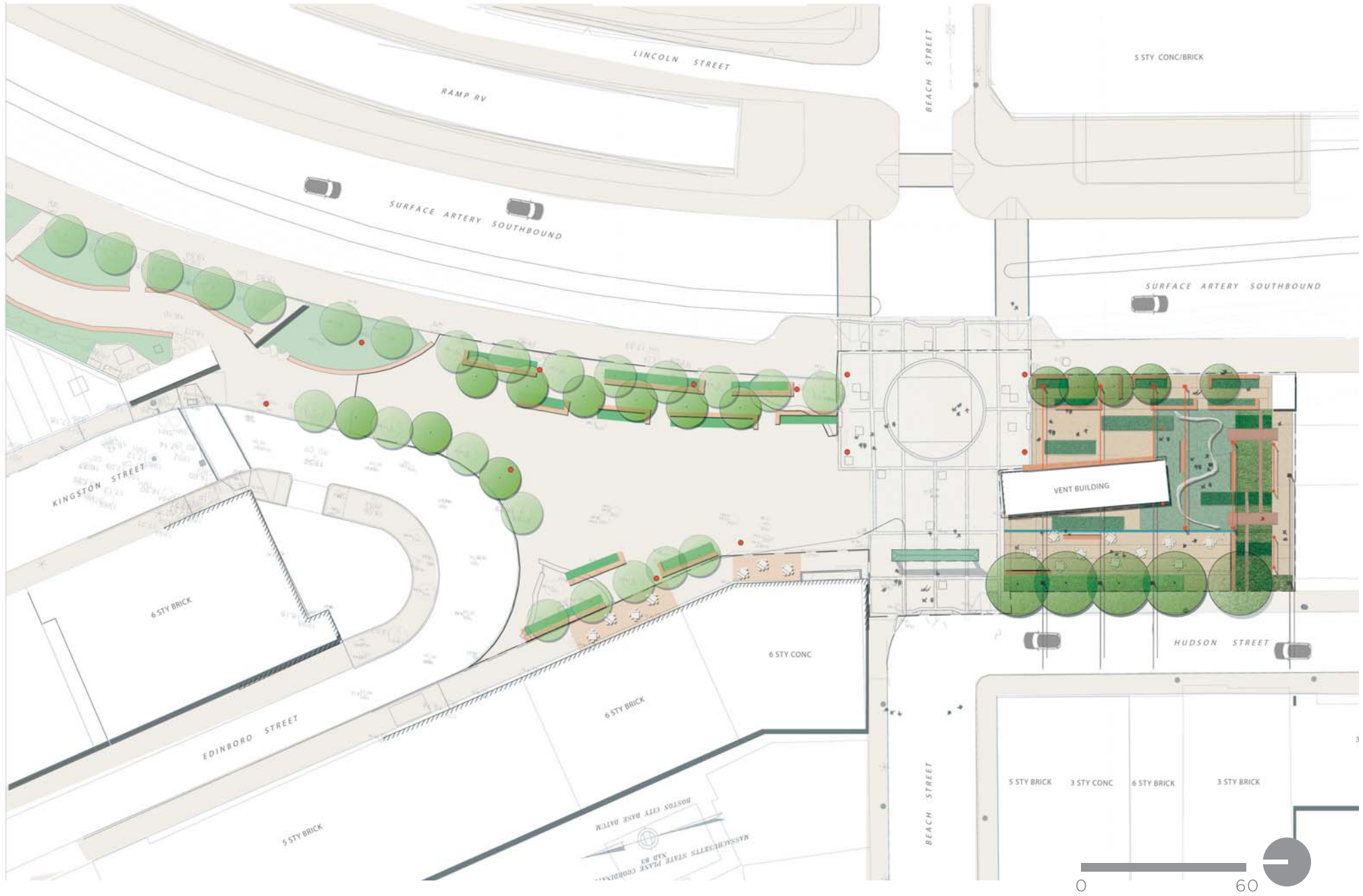
WOVEN SCHEME - INSPIRATION



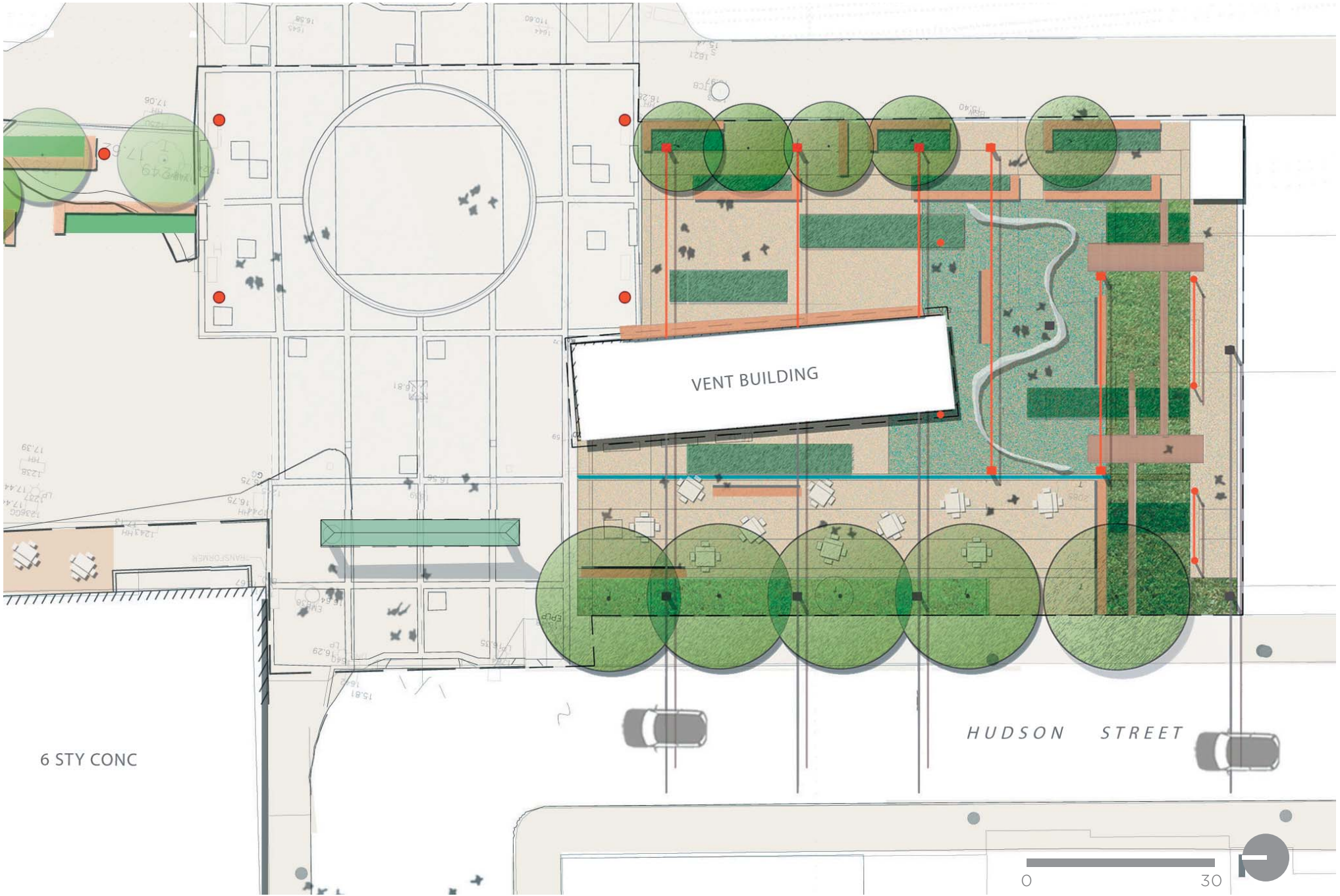
WOVEN SCHEME - CONCEPT DIAGRAM



WOVEN SCHEME - LARGER SITE CONTEXT



WOVEN SCHEME - ENLARGED PLAN



WOVEN SCHEME - PERSPECTIVE

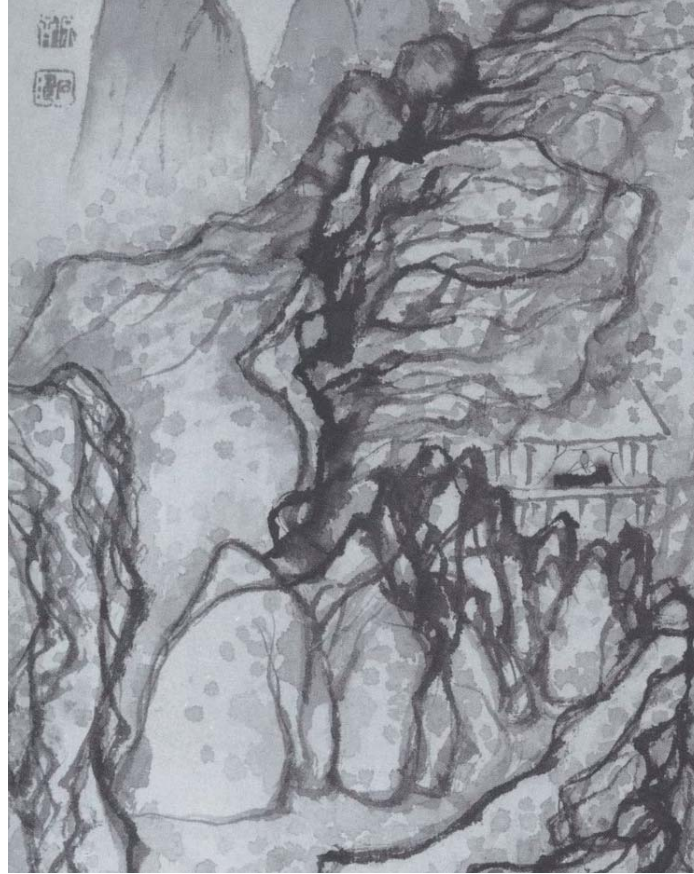
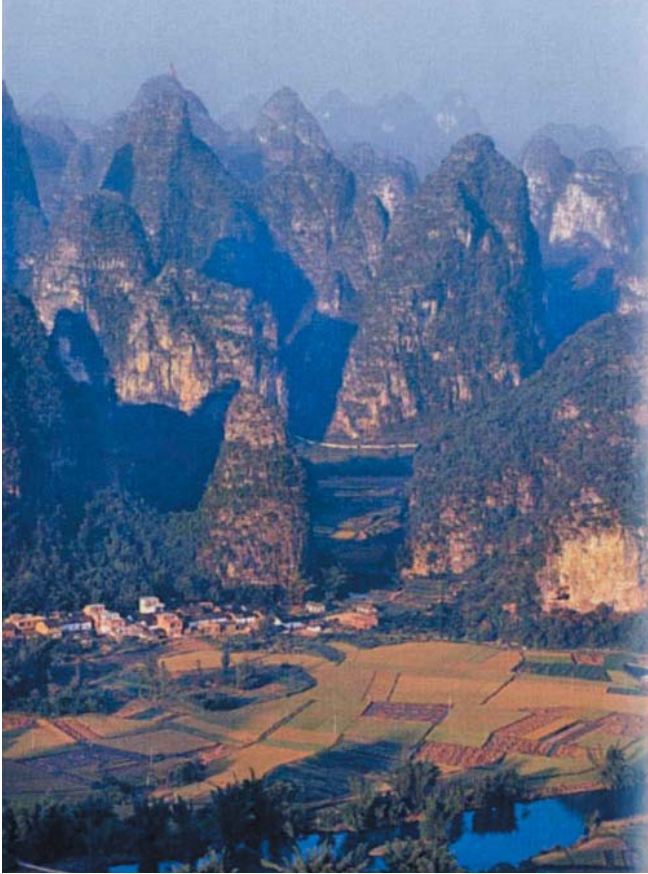


MARY SOO HOO (CHINATOWN GATEWAY) PARK

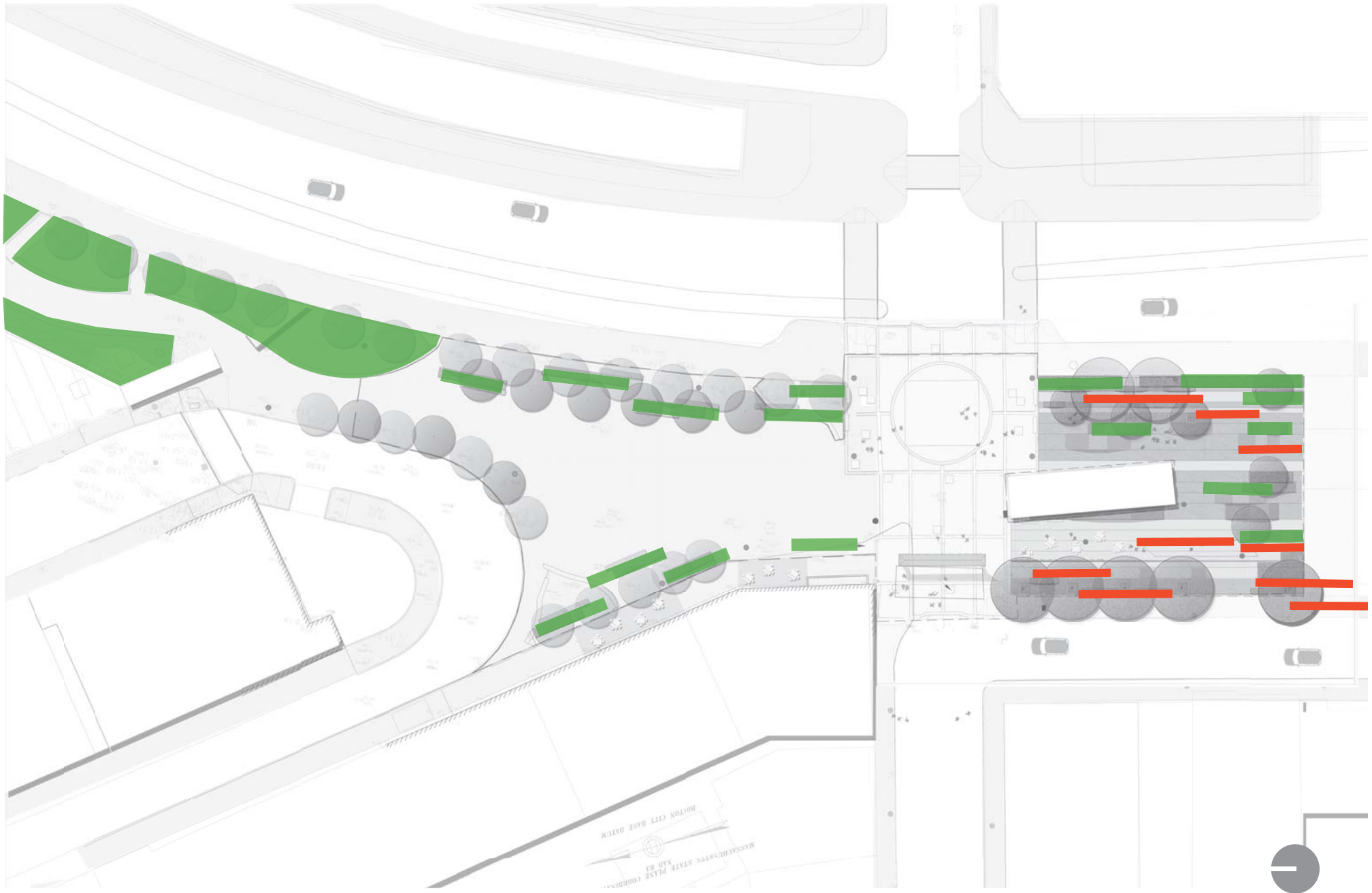


CITY OF BOSTON  BOSTON REDEVELOPMENT AUTHORITY
STEPHEN STIMSON ASSOCIATES LANDSCAPE ARCHITECTS

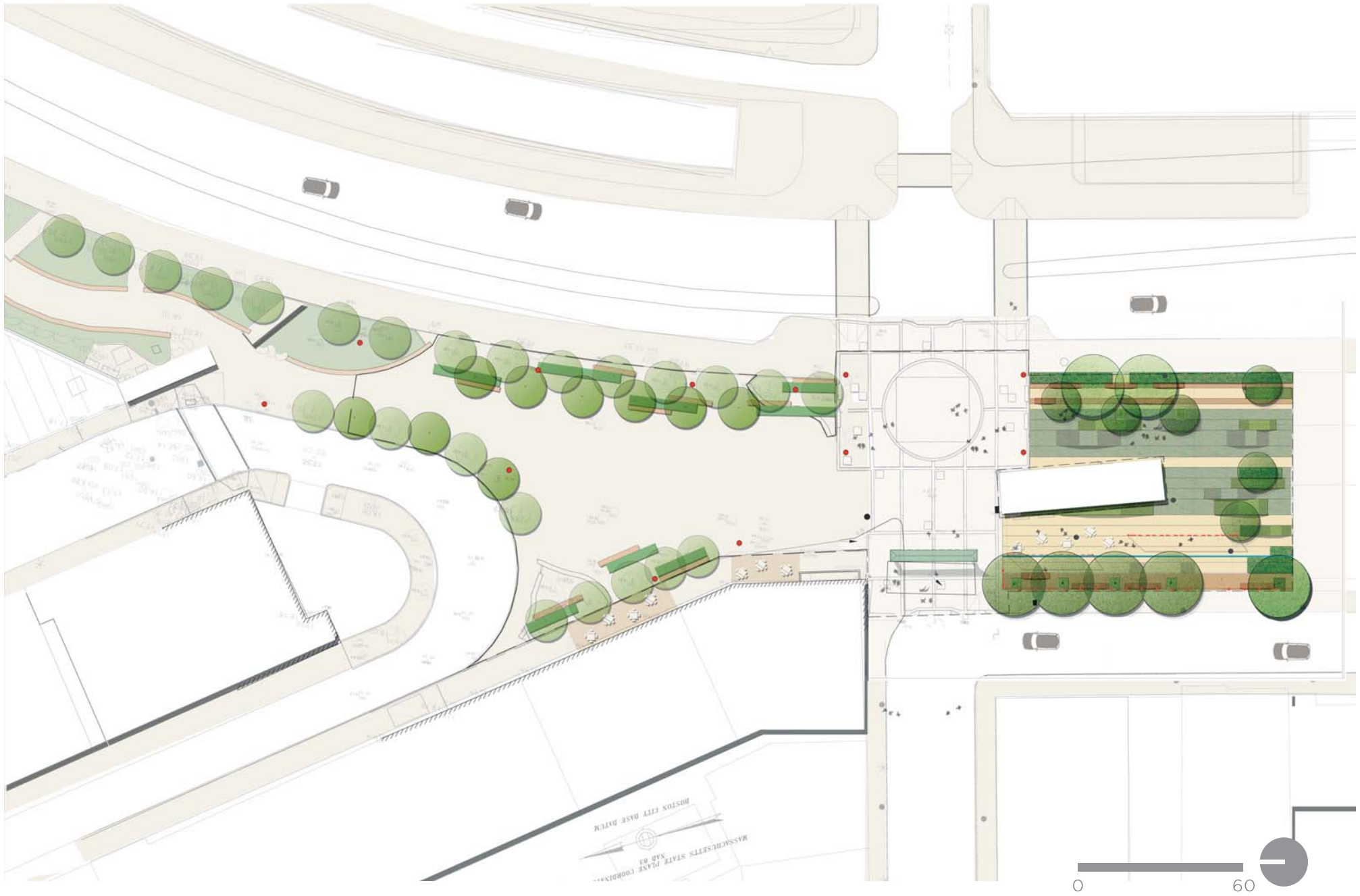
RIBBON SCHEME - INSPIRATION



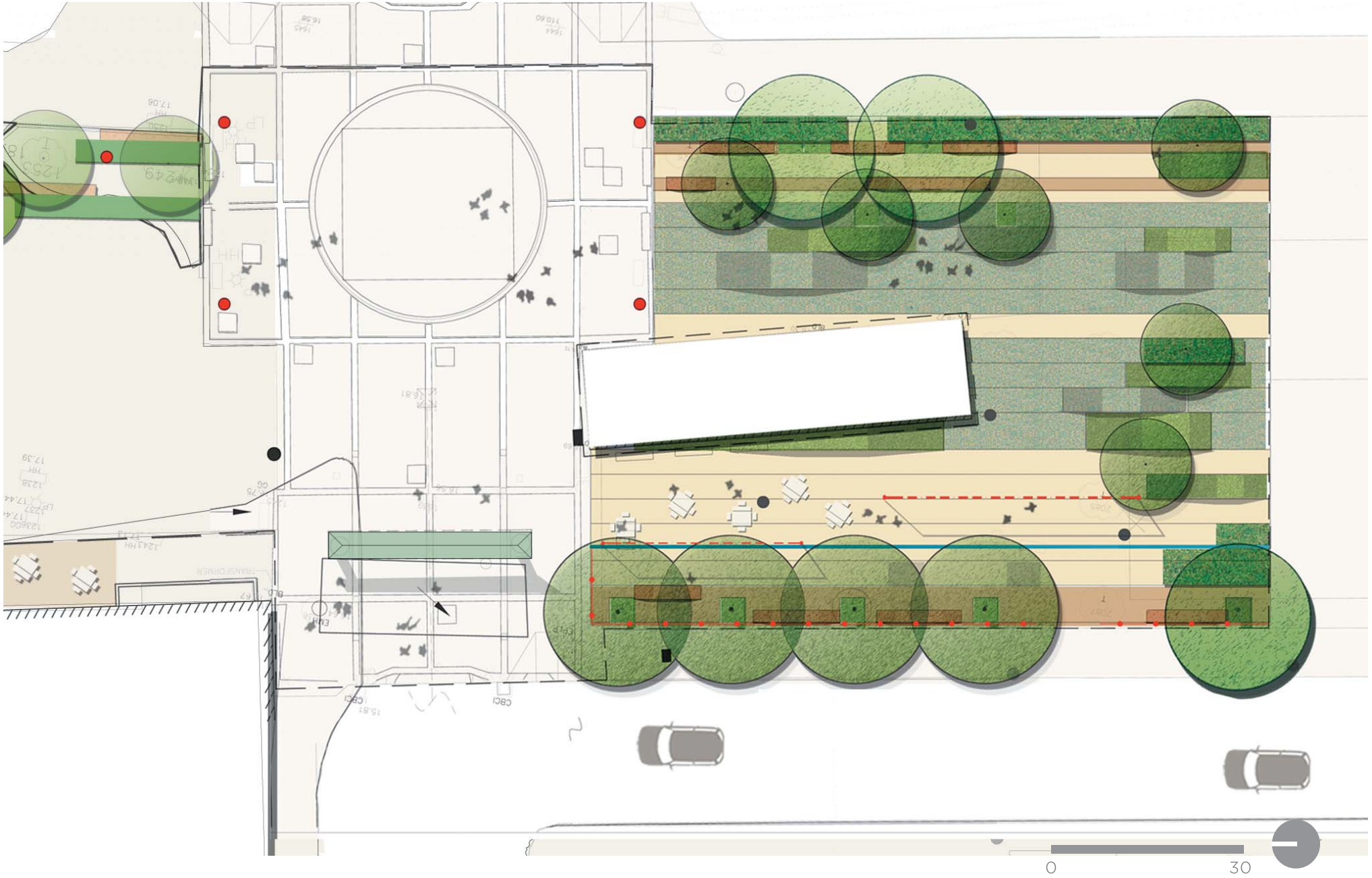
RIBBON SCHEME - CONCEPT DIAGRAM



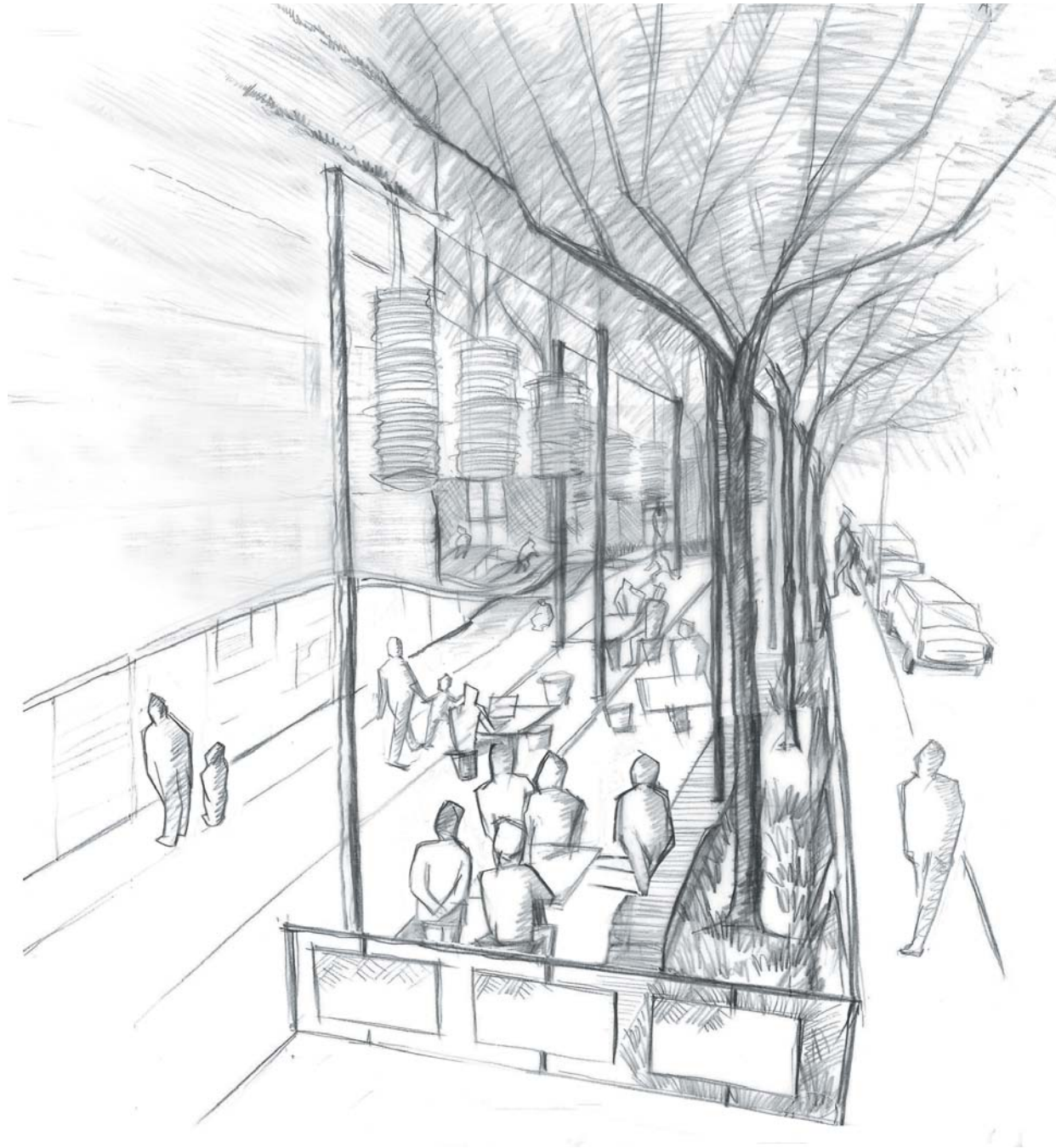
RIBBON SCHEME - LARGER CONTEXT



RIBBON SCHEME - ENLARGED PLAN



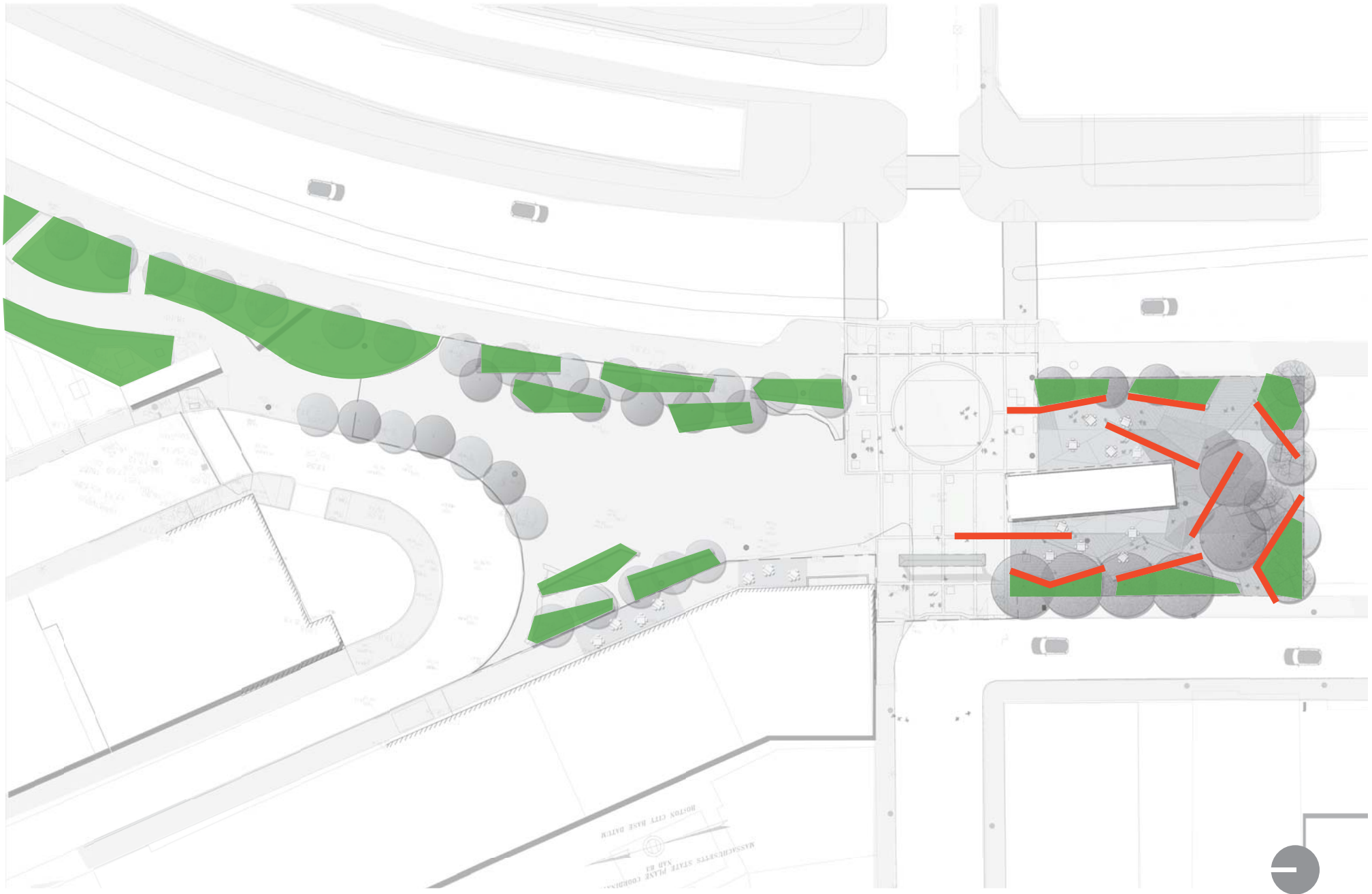
RIBBON SCHEME - PERSPECTIVE



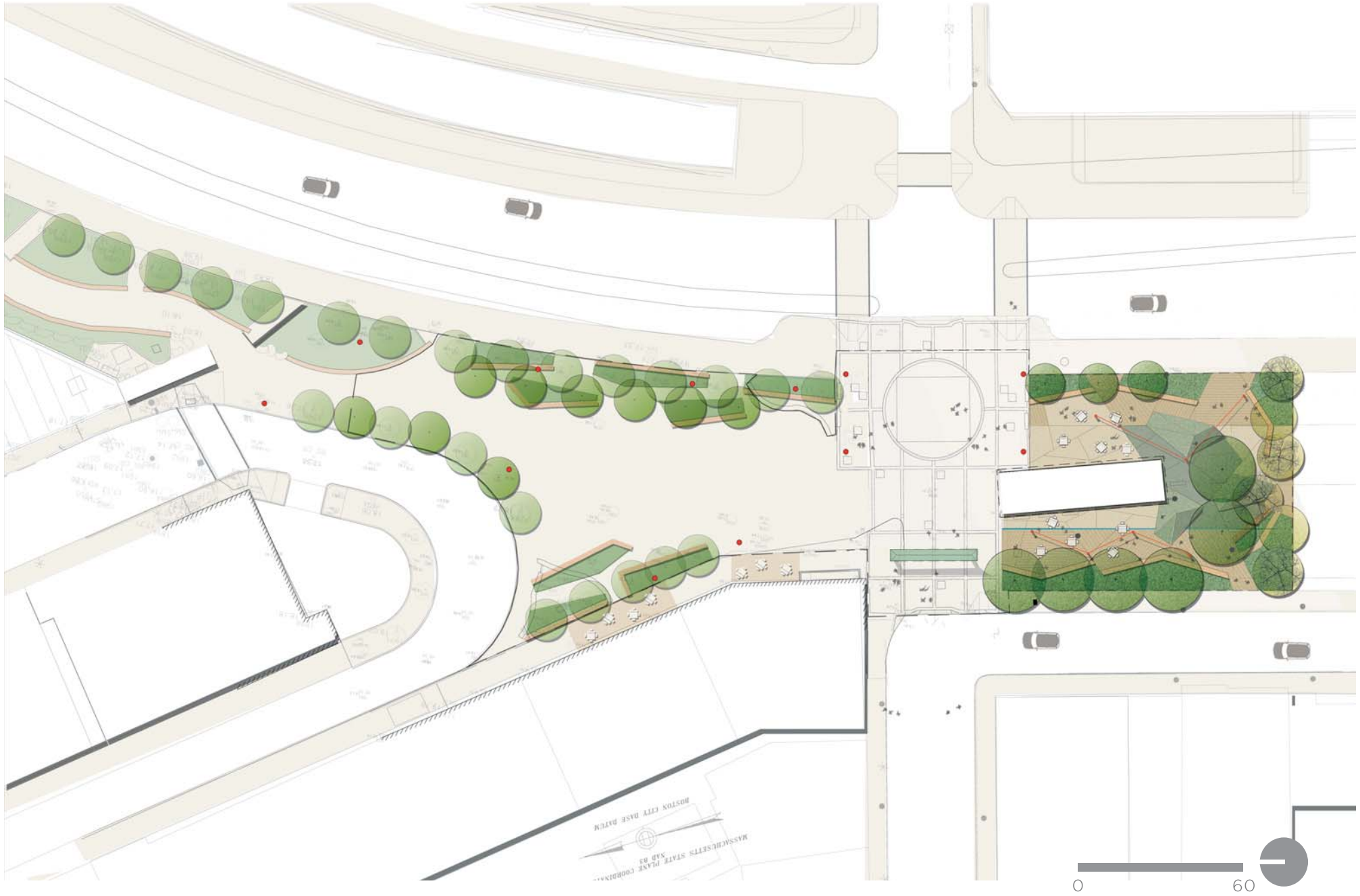
STROLLING GARDEN SCHEME - INSPIRATION



STROLLING GARDEN SCHEME - CONCEPT DIAGRAM



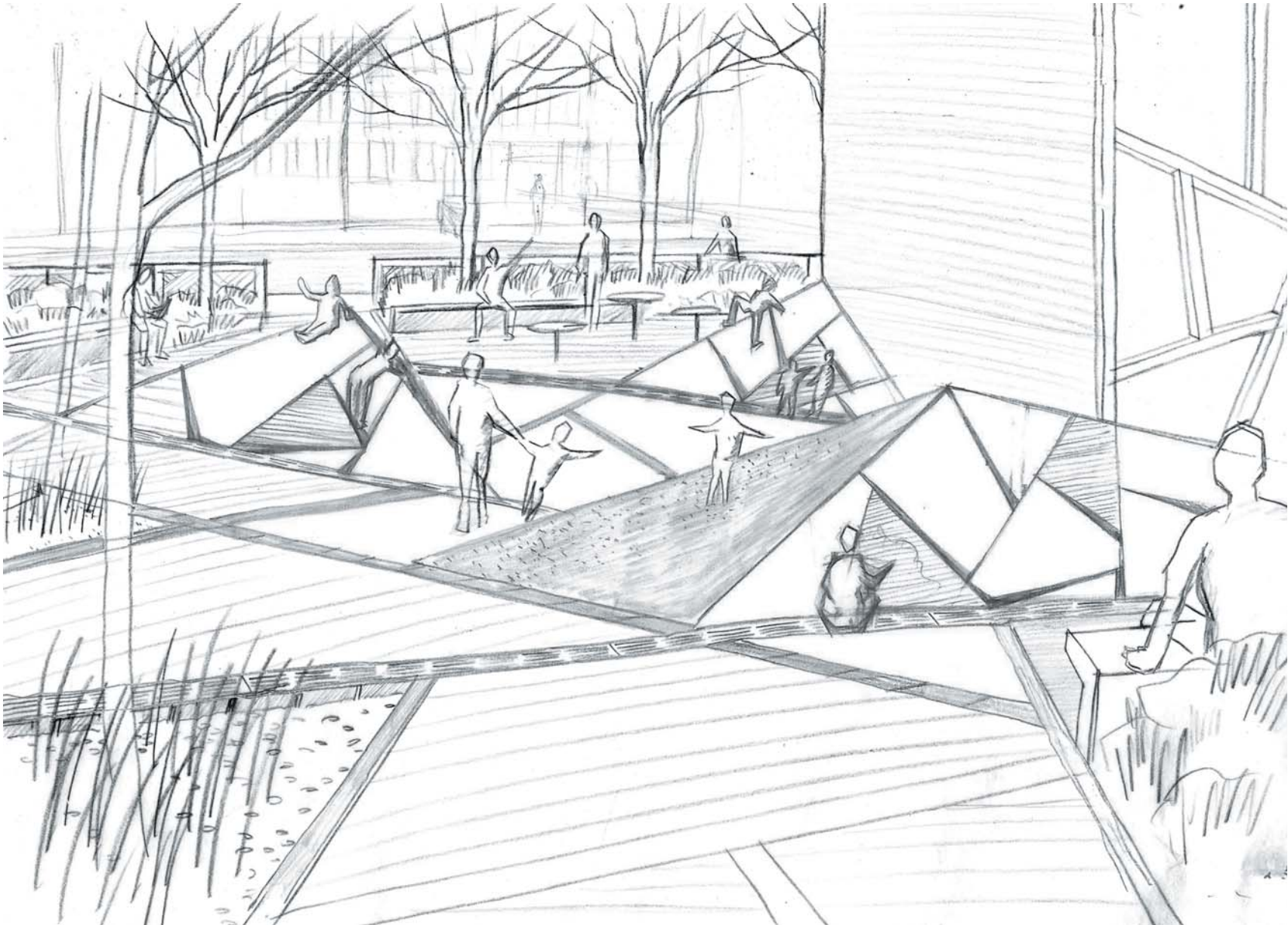
STROLLING GARDEN SCHEME - LARGER SITE CONTEXT



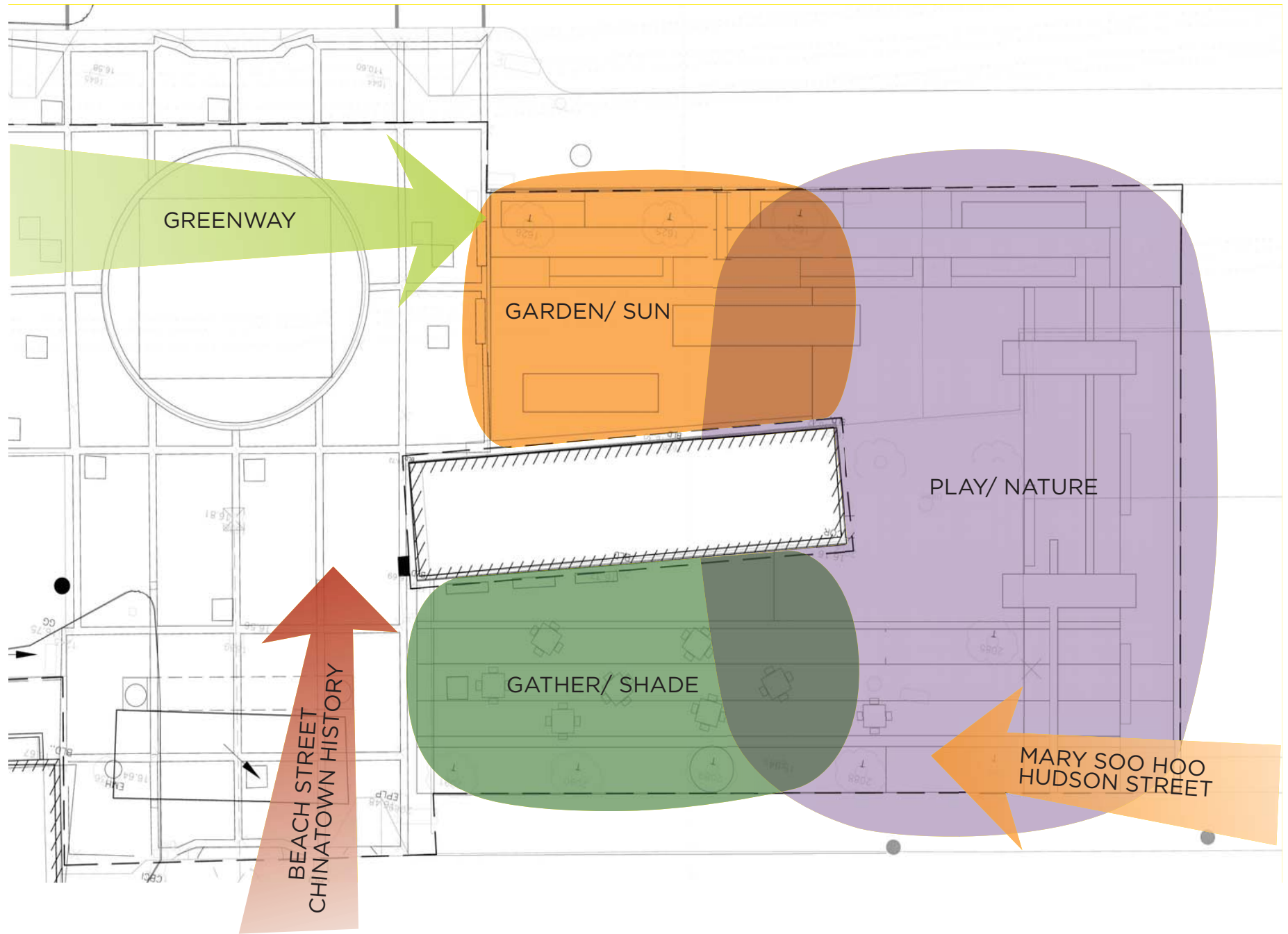
STROLLING GARDEN SCHEME - ENLARGED PLAN



STROLLING GARDEN SCHEME - PERSPECTIVE



COMMON ELEMENTS - CONCEPT DIAGRAM



COMMON ELEMENTS - DESIGN COMPONENTS

