

North Allston-Brighton Community-Wide Plan

Urban Design and Open Space Framework

The Cecil Group

Brown, Richardson & Rowe

The Louis Berger Group

Byrne McKinney & Associates

U³ Ventures

October 7, 2008





Topics

- Barry's Corner
- Holton Street Corridor
- Open Space Concepts
- Urban Design and Edges
- Sustainability Approach

Urban Design – Putting the Pieces Together

- North Allston Strategic Framework for Planning (NASFP), 2005



Urban Design – Putting the Pieces Together



Urban Design – Putting the Pieces Together



Urban Design Precedents: Harvard Square, Cambridge



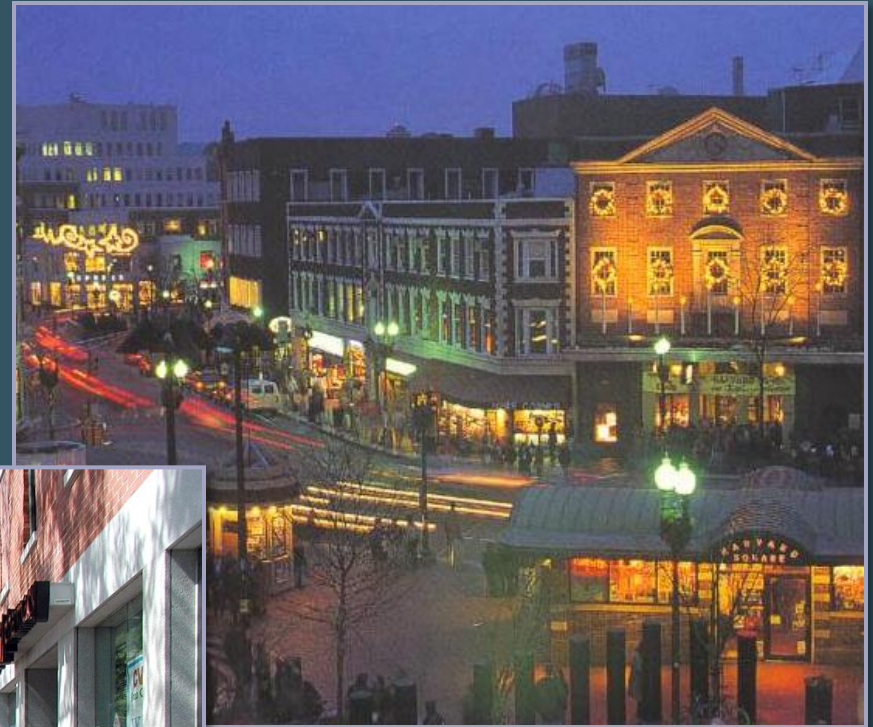
Harvard Square



Harvard Square



Harvard Square



Davis Square, Somerville



Davis Square



Winthrop Square, Cambridge



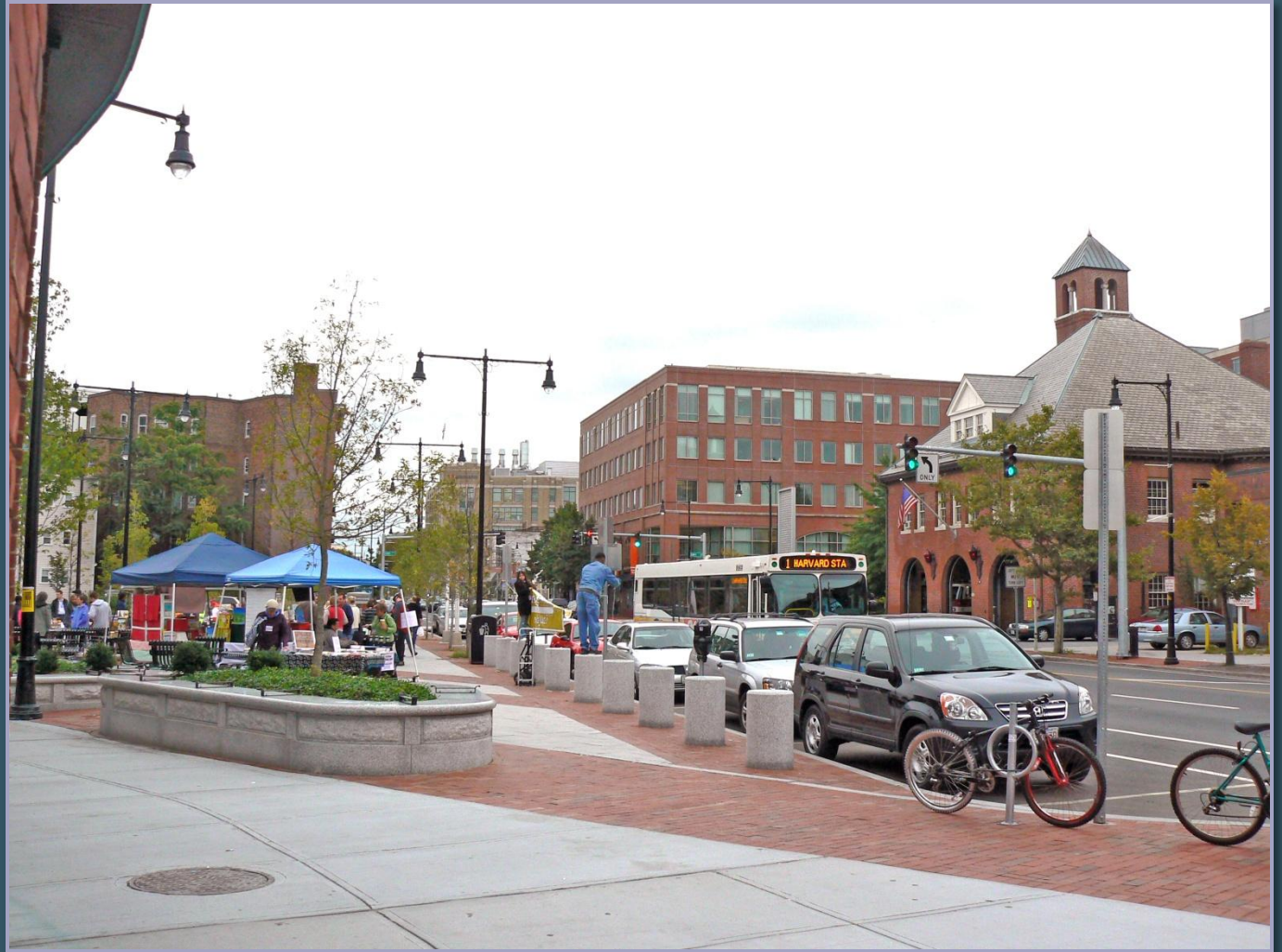
Brigham Circle, Boston



Brigham Circle



University Park, Cambridge



Coolidge Corner, Brookline



Coolidge Corner



Coolidge Corner



Coolidge Corner



Coolidge Corner



Urban Design – Putting the Pieces Together

- North Allston Strategic Framework for Planning (NASFP), 2005



Barry's Corner



Barry's Corner – Preliminary Concept 1

Future Harvard
facilities/mixed-use

Improved park access

Ground floor
retail/facilities of public
accommodation

New plaza/park

Ground floor
retail/facilities of public
accommodation

Future Harvard
facilities/mixed-use



Barry's Corner – Preliminary Concept 2

Park pavilion/café

Retail



Barry's Corner – Preliminary Concept 3

Higher-scale elements

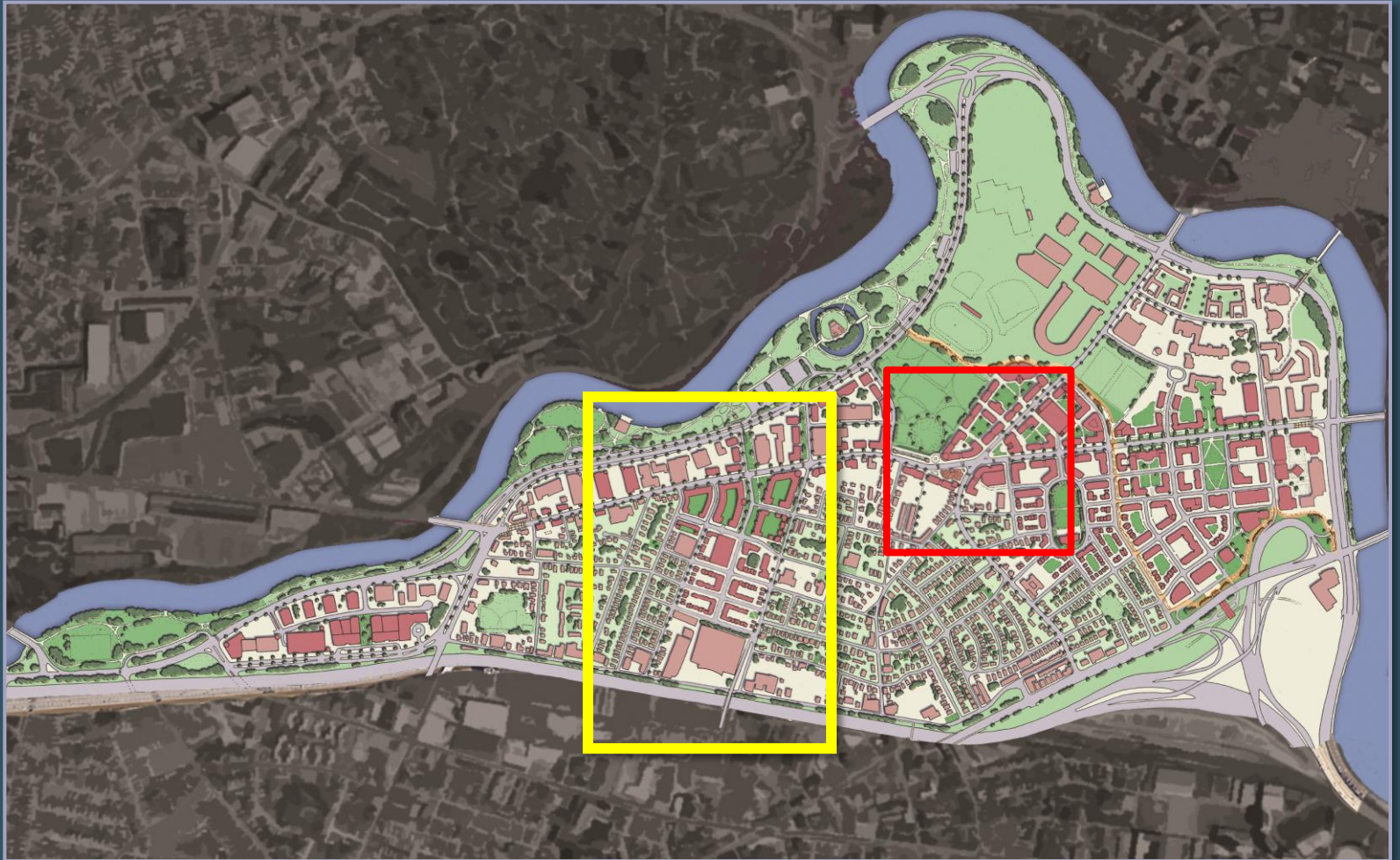
Lower-scale elements



Barry's Corner – Preliminary Concepts



Holton Street Corridor



Holton Street Corridor – Preliminary Concept 1

Housing with retail and
commercial uses along
Western

Housing infill along block
edges

New neighborhood parks

The “Square”: community
convenience/retail services
center

Completed, occupied “CC&F”
complex



Holton Street Corridor – Preliminary Concept 2

Housing with retail and
commercial uses along
Western

The “Square”: community
convenience/retail services
center

Mixed-scale housing infill

Reduced scale, reconfigured,
and occupied “CC&F”
complex



Holton Street Corridor – Preliminary Concept 3

Housing with retail and commercial uses along Western

The “Square”: community convenience/retail services center

Mixed-scale housing infill

Completed and occupied “CC&F” complex

