

PLAN: Charlestown

Land Use Over Time

October 8, 2020

Welcome

Technology & Tips

Jason Ruggiero, Community Engagement Manager

Kelly Sherman, Planner I



Agenda: Land Use Over Time

- Boston Parks & Recreation Department: Parcel Priority Plan (open space)
- Boston Planning & Development Agency: built environment
- Question and Answer
- Online Feedback: Open Until the End of October
- If you have a follow up item, please reach out to Jason Ruggiero (Jason.Ruggiero@boston.gov) and we will be in touch as soon as possible.

Meeting Format

- During the presentation, attendees should submit written questions to the hosts (Kelly and Jay) via the question and answer function, to be addressed after the presentation.
- During the question and answer session, participants may also use the “Raise Hand” function of Zoom. When you hit the “Raise Hand” button a staff moderator will know to unmute your computer. Please be mindful of background noise.
- Following the meeting, the online feedback tool will be available until the end of the October.

Zoom Tips

Welcome! Here are some tips on using Zoom for first-time users.

Your controls are at the bottom of the screen



Use the chat to type a comment or ask a question at any time – Members of the PLAN: Charlestown team will moderate the chat



To raise your hand, click on “Participants” at the bottom of your screen, and then choose the “Raise Hand” option in the participant box



Mute/unmute – Participants will be muted during the presentation – the host will unmute you during discussion if you raise your hand and it is your turn to talk



Turns your video on/off

Meeting Recording

At the request of community members, this event will be recorded posted on the PLAN: Charlestown project webpage at

<http://bostonplans.org/PlanCharlestown>

for those who are unable to attend the Zoom event live.

Also, it is possible that participants may be recording the meeting with their phone cameras or other devices. If you do not wish to be recorded during the meeting, please turn off your microphone and camera.

If your camera and microphone are off, you can still participate through the text chat feature.

2020 Census Update and Reminder

Quick Facts:

- As of 7/7, 52.2% (about 175,800) of Boston's households have responded.
- In 2010, the final response rate was 64.4%.

The Census has never been more accessible. You can respond:

- Online (my2020census.gov)
- Over the phone, or by mail.
- 13 different languages available.

Boston depends on your household to respond. For every person not counted, ***nearly \$2,400*** per year for the next ten years is ***lost*** in federal funding.

COVID-19 Resources

Stay up-to-date with COVID-19 related announcements, City of Boston reopening plans, and resources for you and your community at:

boston.gov/coronavirus

Content available in 16 languages.



The screenshot shows the City of Boston website page for COVID-19 resources. The header includes the City of Boston logo, Mayor Martin J. Walsh's name, and a seal. The main heading is "CORONAVIRUS DISEASE (COVID-19) IN BOSTON". Below this, there is a paragraph of text: "The state has updated guidance on the Reopening Massachusetts website. We also continue to update City-specific guidance for Boston on our reopening website." To the right of this text, it says "July 12, 2020" and "PUBLISHED BY PUBLIC HEALTH COMMISSION". Below the text, there is a section for "MULTILINGUAL CONTENT" with a list of languages: العربية (Arabic), Kreyòl (Cabo Verdean creole), 中文 (Chinese), Français (French), Kreyòl ayisyen (Haitian Creole), Português (Portuguese), and Русский (Russian). At the bottom, there is a section for "BOSTON (AS OF FRIDAY, JULY 10)" with the statistics "13,673 CASES | 9,683 RECOVERED".

For meeting all content:

<http://www.bostonplans.org/plancharlestown>

PLAN: Charlestown

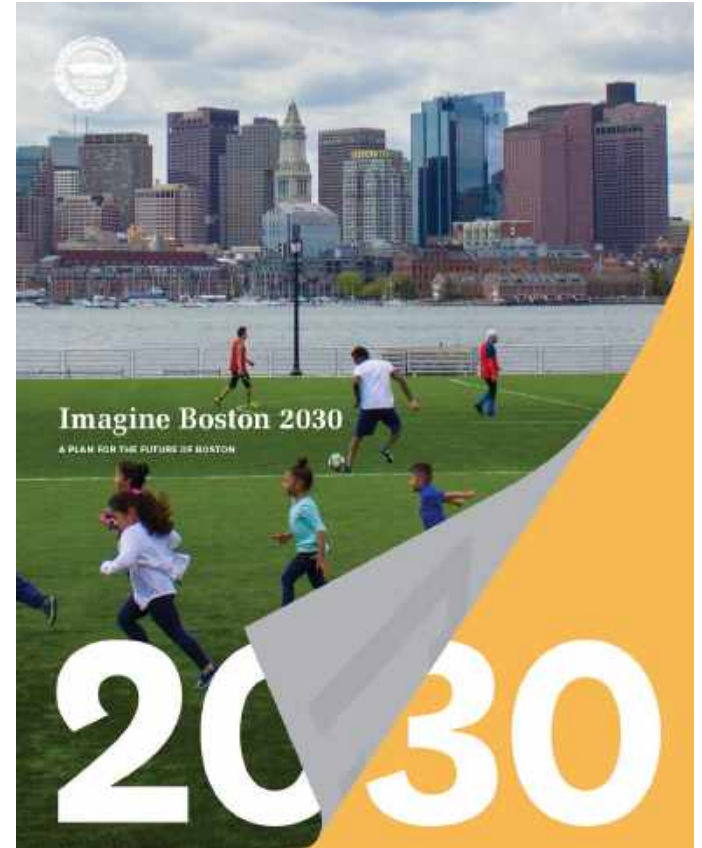
Ted Schwartzberg, AICP, Senior Planner

Moment of silence in honor of Bill Lamb

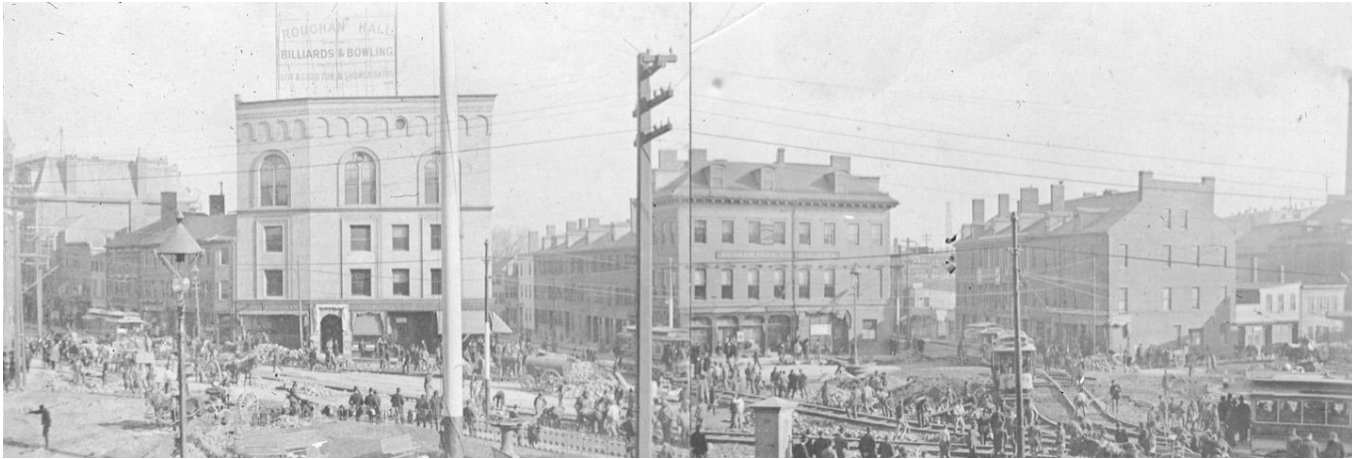
What is Imagine Boston 2030?

Begun in 2015 and completed in 2017, Imagine Boston 2030 (IB2030) is the first citywide plan in 50 years.

It created the guiding principles and framework to guide all growth in the City of Boston. In partnership with the BPDA, the City of Boston can ensure that priorities are carried out through creative and thoughtful land use regulations and guiding principles.



Overview



- 2019
- January 2020
- August 2020
- Tonight
- Oct. 13th, 2020

Pre-process engagement events
Kick-Off Open House: *all planning topics*
Open Office Hours: *planning for tonight*
Land Use Over Time
Open Office Hours: *feedback tools assistance*

2019 - Fourteen Engagement Events



BPDA staff members attend a meeting hosted by the Charlestown Preservation Society, one of 14 engagement events held in late 2019 in preparation for today's launch of PLAN: Charlestown

The core of Charlestown is historic in nature:
we must preserve this existing fabric.

January 31, 2020 - Open House



August 27, 2020 - Open Office Hours

What's Next



View south from Sullivan Square, 1901. Note historic core to the east (left) and industrial uses to the west (right).
Source: City of Boston Archives



View north from Austin Street, 1928. Note prison in foreground, historic core to the east (right) and industrial uses to the west (left).
Source: Boston Public Library



00:11:59 / 00:52:37

Speed



Parcel Priority Plan

Maggie Owens

Planner, Boston Parks and Recreation Department



**boston planning &
development agency**

PLANNING FOR FUTURE PARKS



Parcel Priority Plan

What should the City prioritize?

Where would you like to see more parks?

*Help shape the future of Boston's park system by
visiting the virtual open house and taking the survey at:*

boston.gov/parcel-priority-plan

History and the Built Environment

Ted Schwartzberg, AICP, Senior Planner II

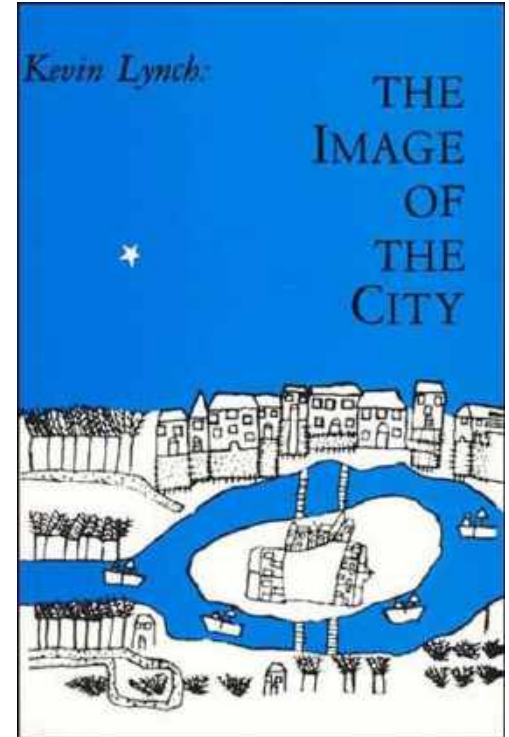
Meghan Richard, Preservation Planner & Urban Designer II



Understanding Place

Kevin Lynch's methods - historic areas

- How do we take in information about our surroundings?
- How do we process that information to build mental maps?
- How do we orient ourselves to know where we are?
 - *How do we identify different parts of a city or neighborhood?*



I know I'm somewhere historic...



Putnam Street



I know I'm somewhere industrial...



Boston Sand & Gravel and MBTA Portal



I'm at an edge of a residential area...



Lost Village & Sullivan Square Station



Mental Maps Put it All Together

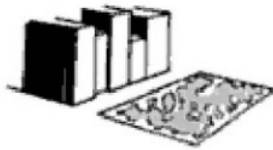


Pleasant Street (2020)

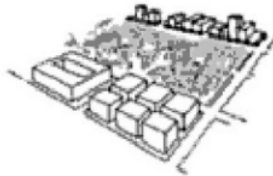
Kevin Lynch's Five Elements of Place



Paths



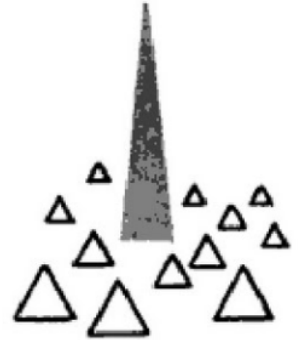
Edges



Districts



Nodes



**Orienting
Landmarks**

Paths



Main Street (2020)



Paths



Austin Street Bridge (2018)

Paths



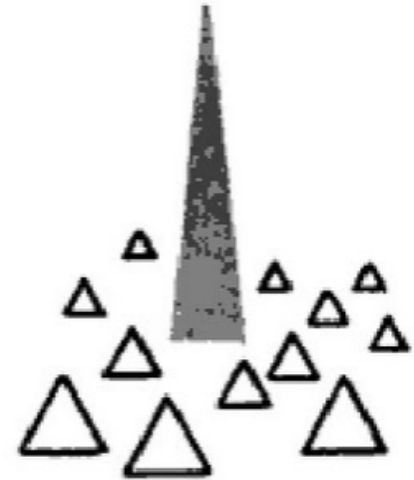
Bunker Hill Street 1946



Orienting Landmarks



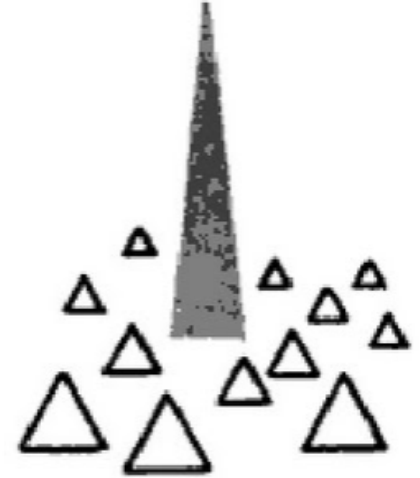
Bunker Hill Monument (1973)



Orienting Landmarks



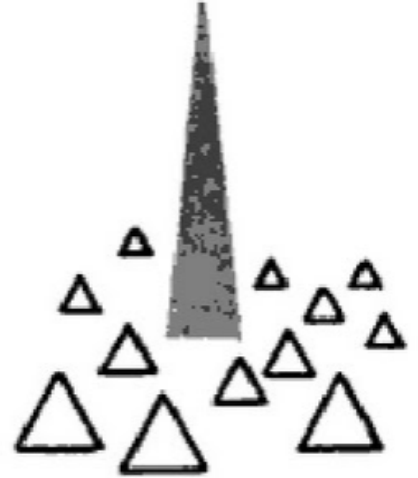
Bunker Hill Monument in background (1925)



Orienting Landmarks



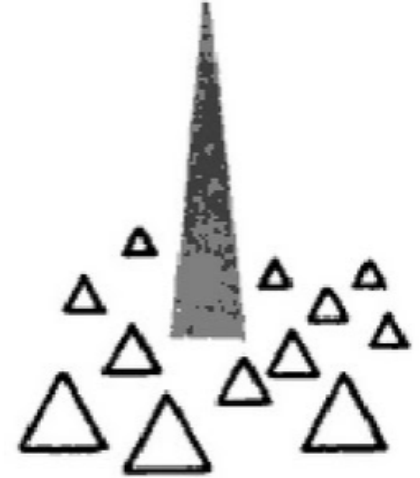
Bunker Hill Monument and Roughan Hall (1950's)



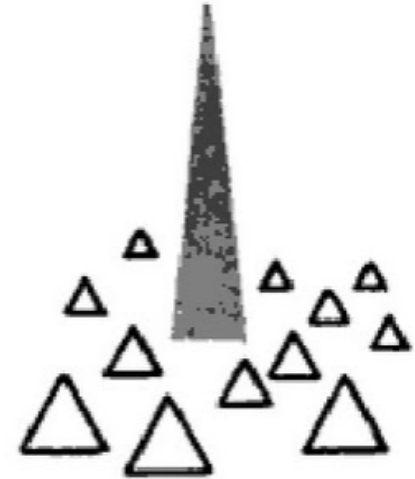
Orienting Landmarks



Roughan Hall (1899)



Orienting Landmarks

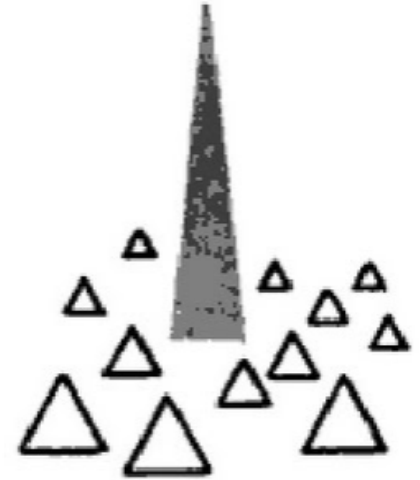


Roughan Hall (1965)

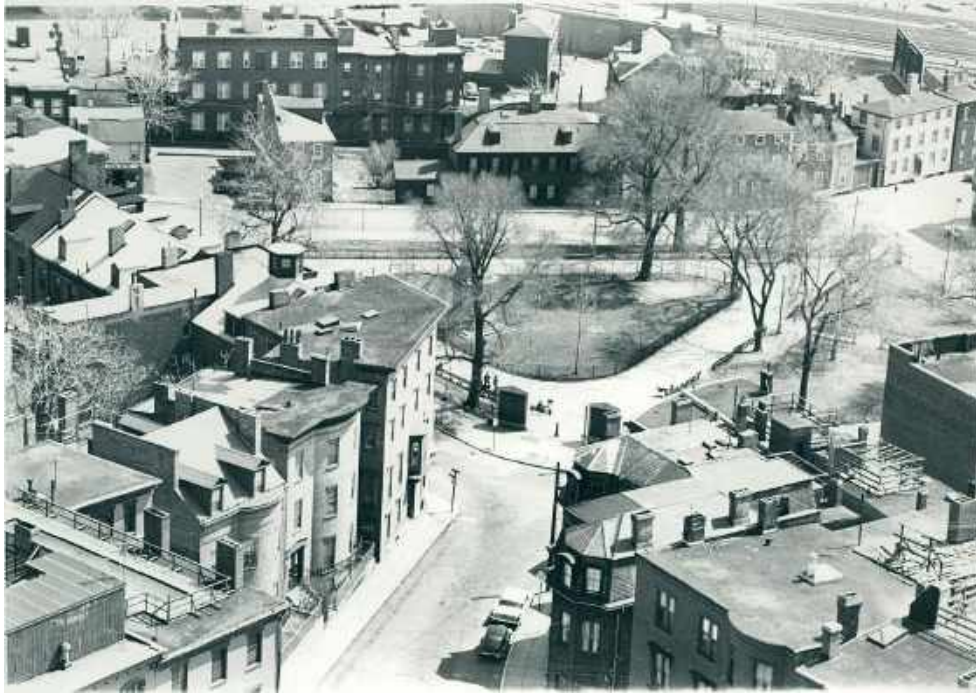
Orienting Landmarks



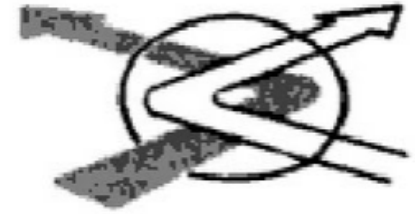
Roughan Hall (2020)



Nodes



Training Field (1965)

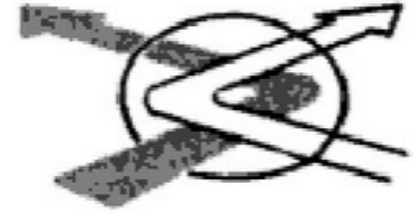
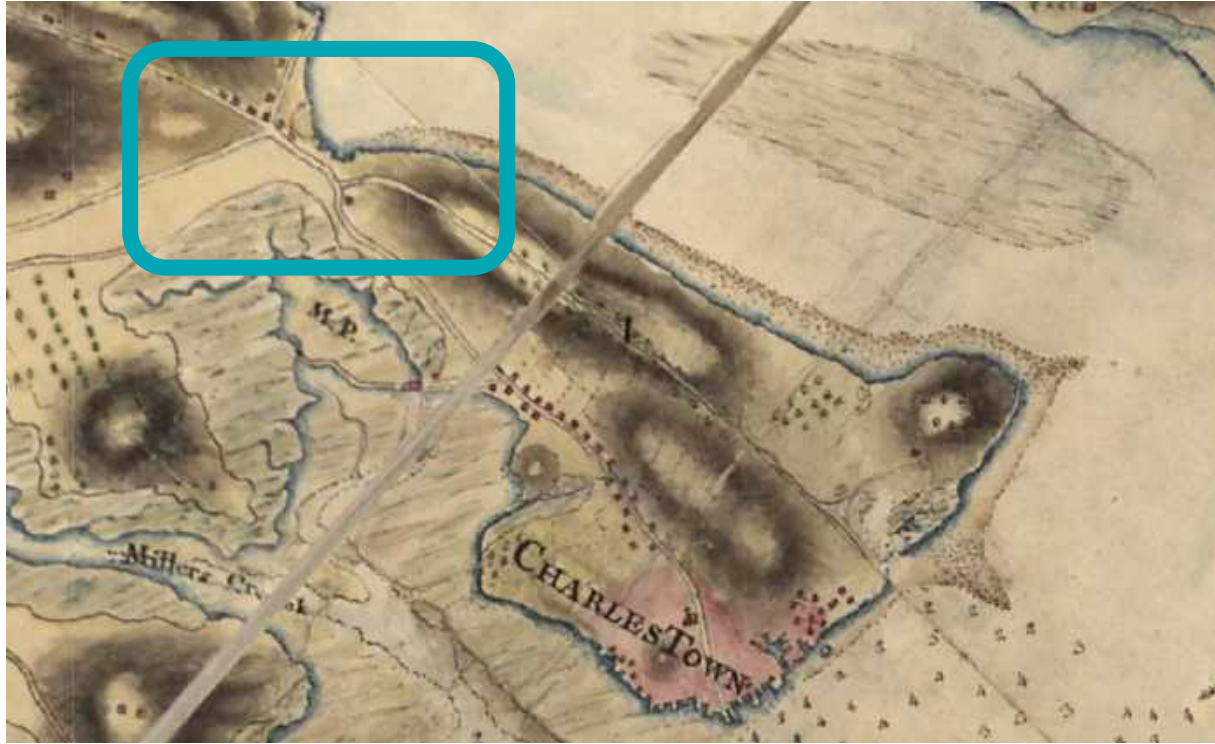


Nodes



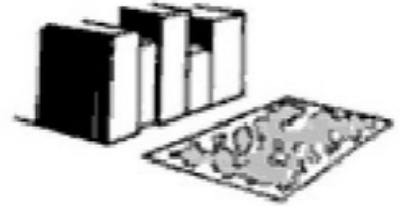
Hayes Square (1949)

Nodes



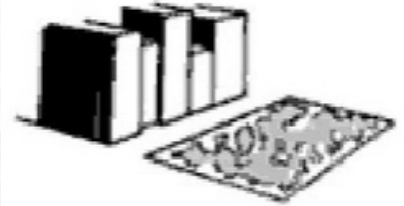
The Neck: 1770 Boston Harbor Map

Edges



Lost Village (2019)

Edges

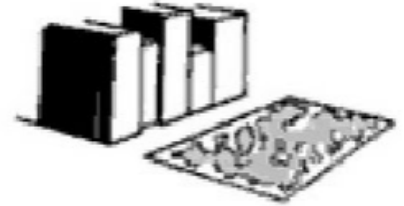


Medford Street (1965)

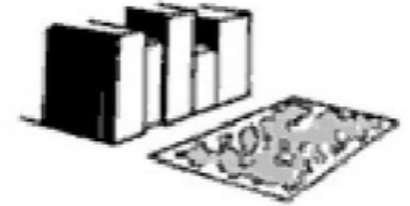
Edges



Chelsea Street (2020)



Edges



Rutherford Avenue (2020)

Districts

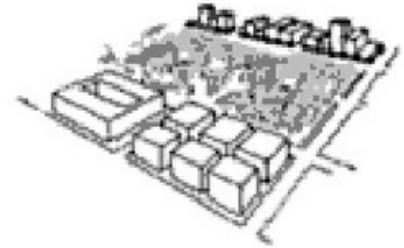
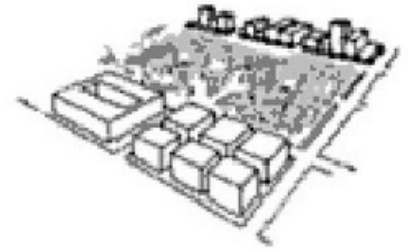


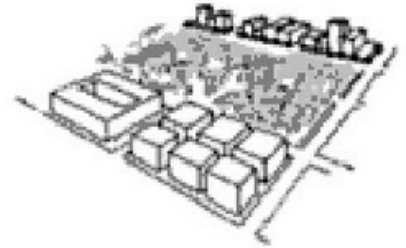
Figure Ground Representation

Districts

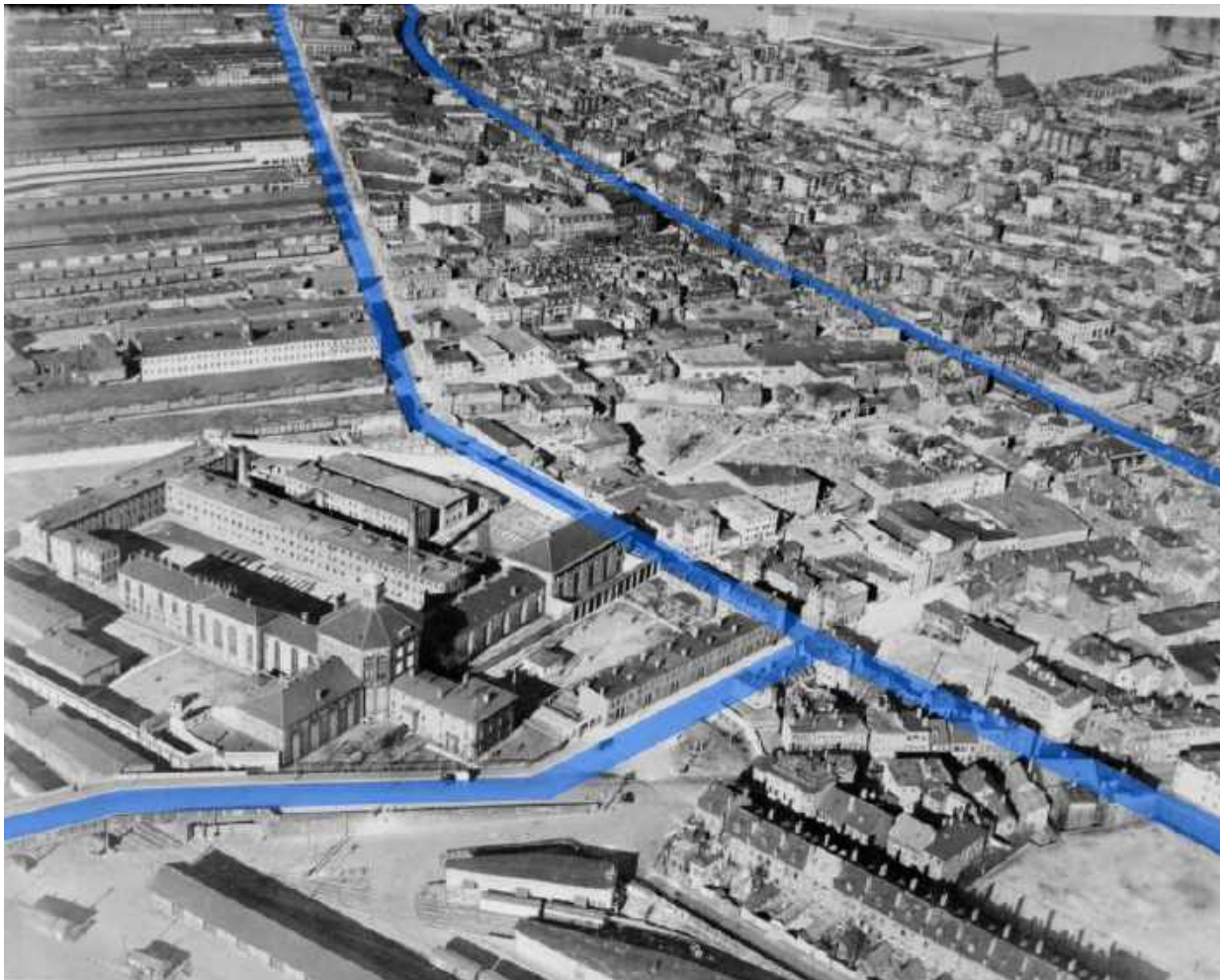


From Sullivan Square (1901)

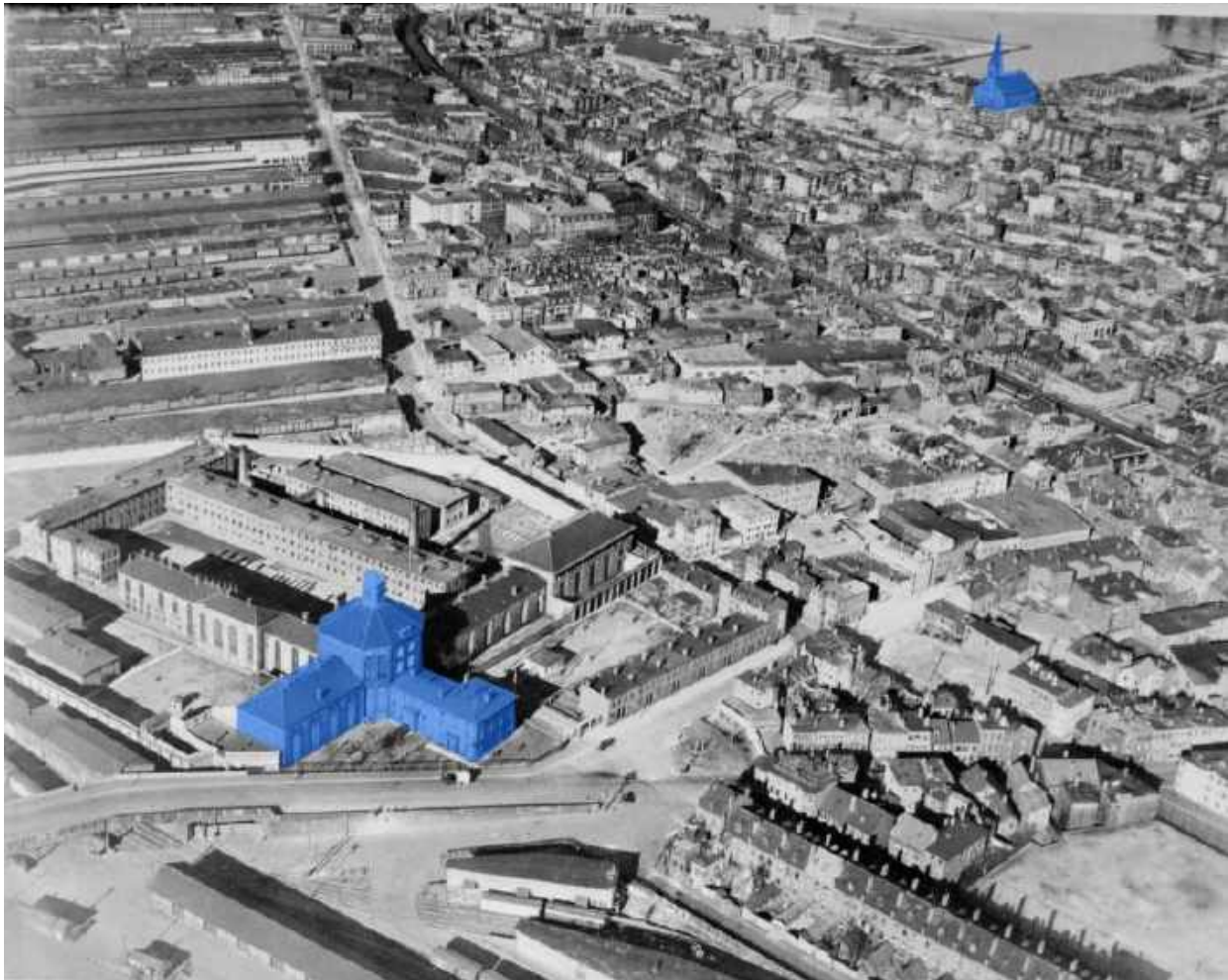
Districts



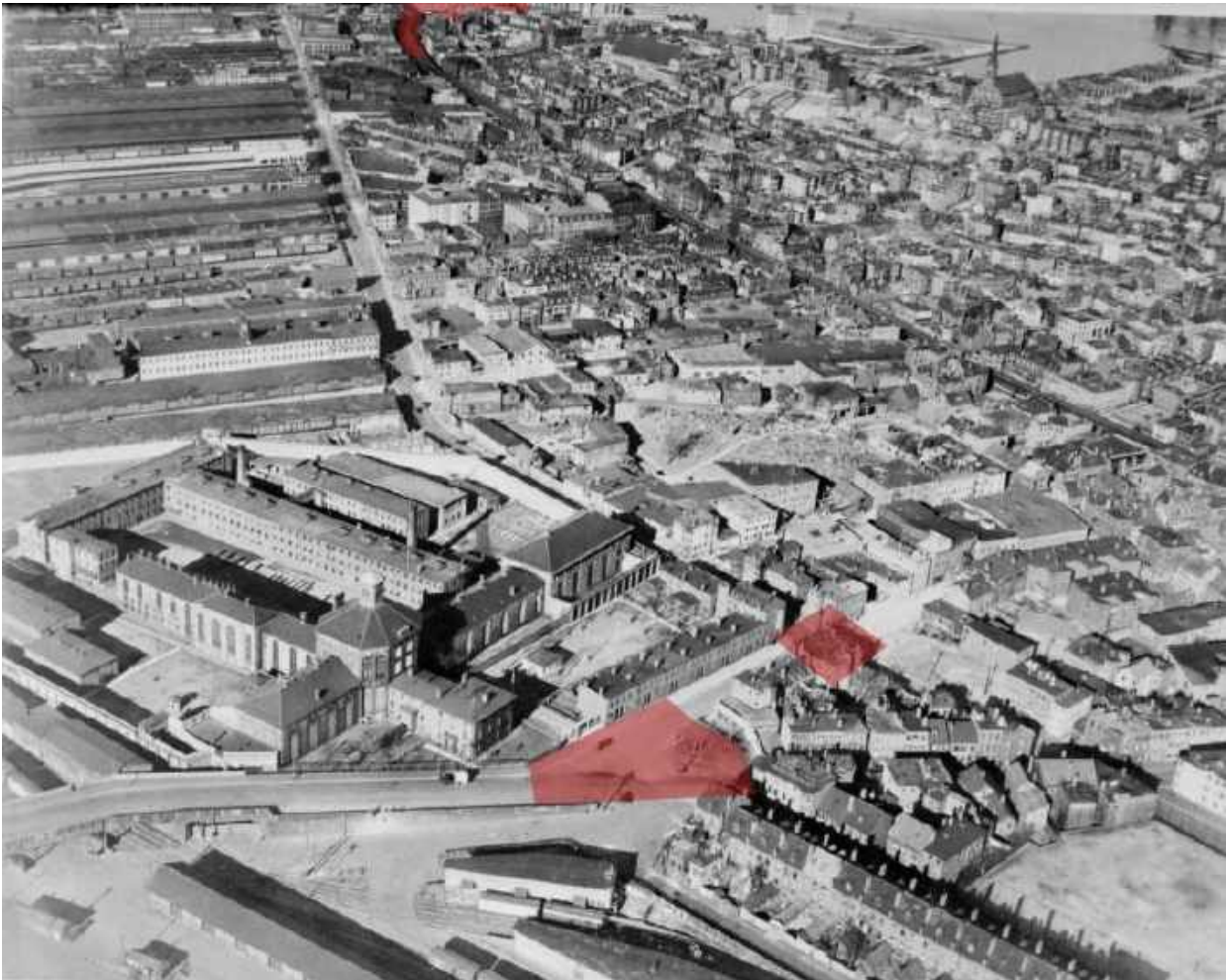
Paths



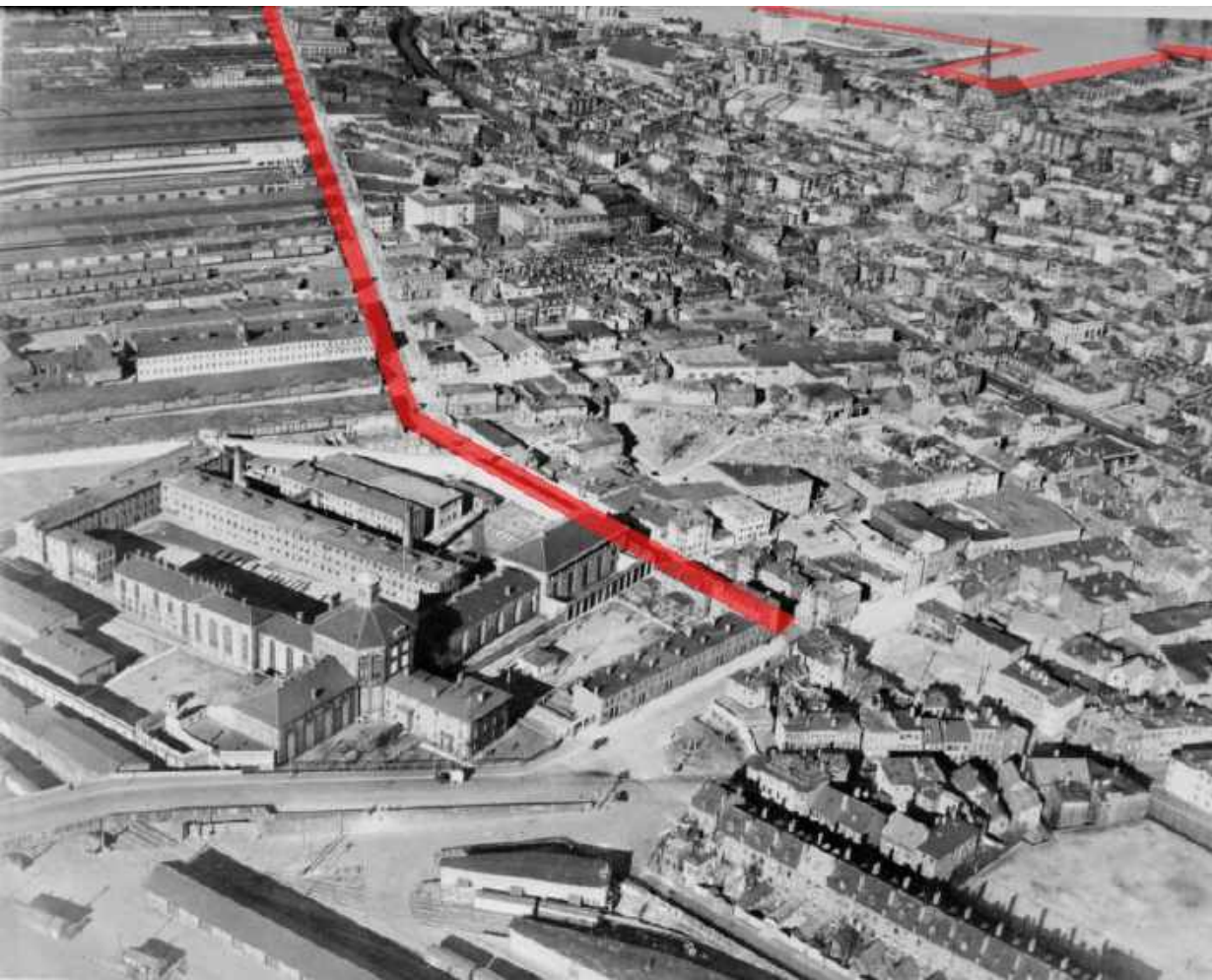
Orienting Landmarks



Nodes



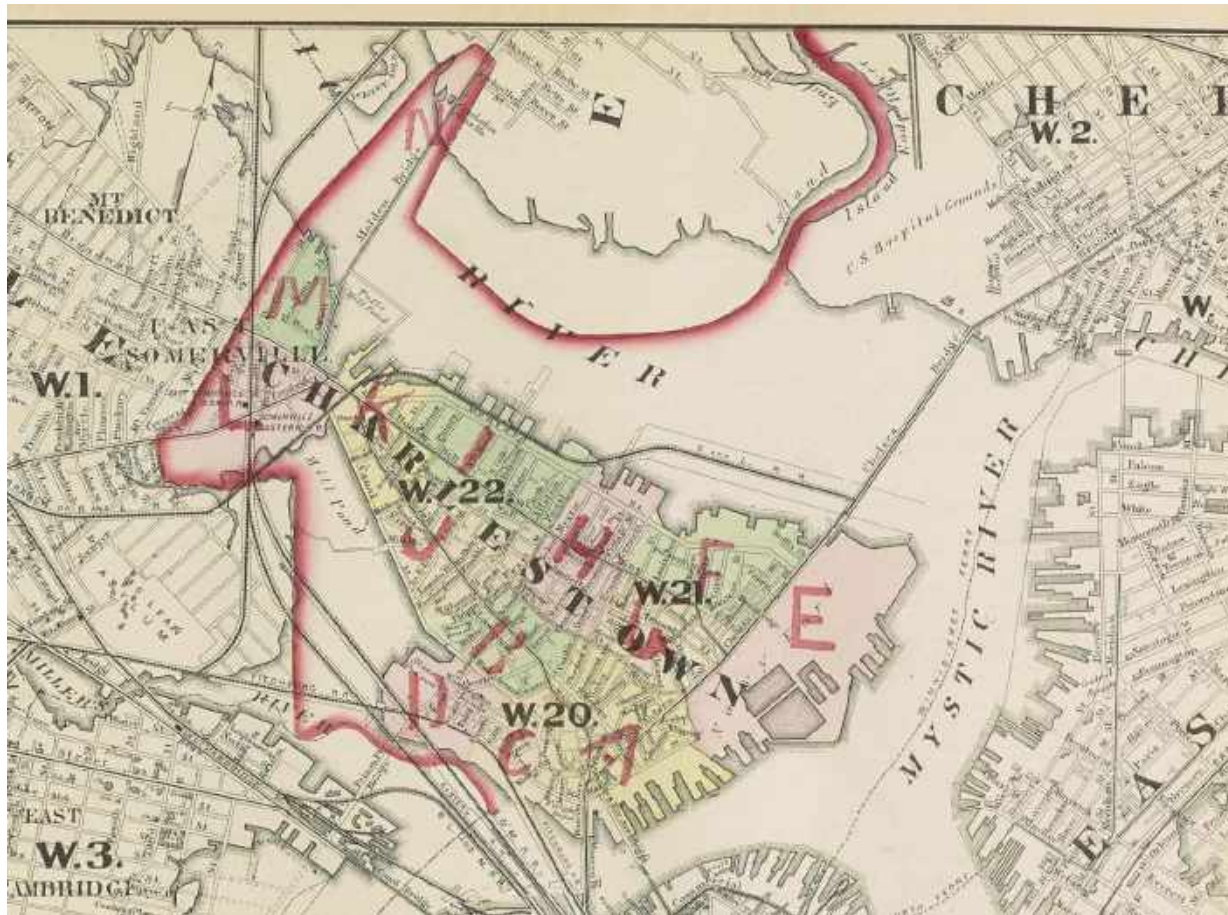
Edges



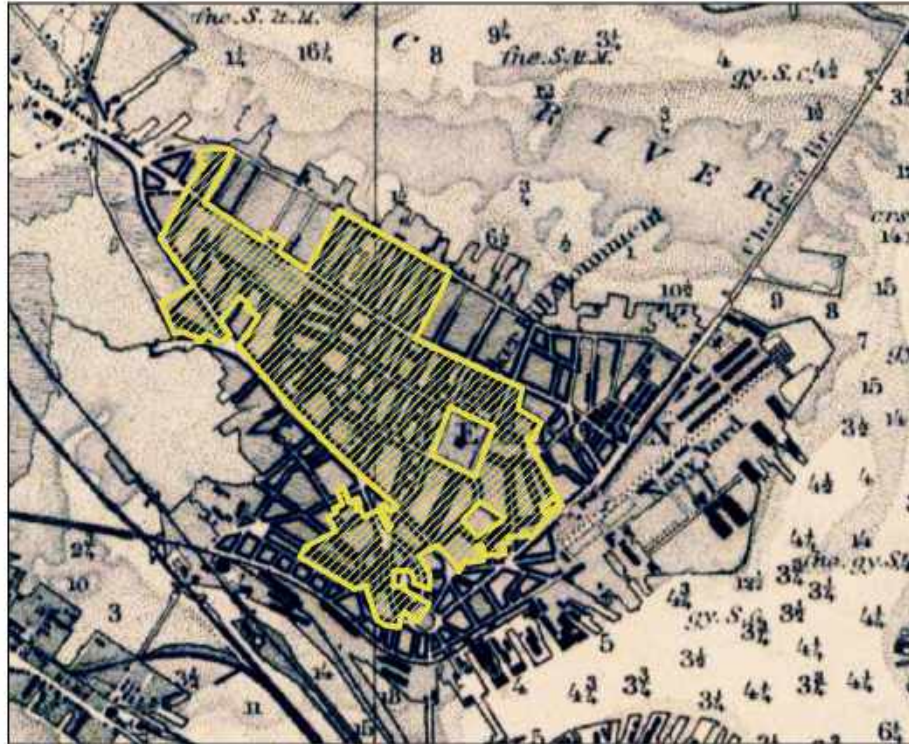
Districts



1875



NDOD



This map depicts the Charlestown Neighborhood Design Overlay District in yellow, over the National Oceanic and Atmospheric Administration's 1878 Boston Harbor Chart

Current NDOD Boundary Map



Your Turn

Kelly Sherman, Planner I



**boston planning &
development agency**

Historic Area Identification

- Online input tools will be available through October 31st
- No need to do it tonight (a lot of information to take in!)
- Video of tonight's presentation will be posted online, as a guide
- We'll meet again remotely on October 13th in case of technical difficulties
- For links to the historic area feedback tool & the Parks Parcel Priority tool:

www.bostonplans.org/plancharlestown

PLAN: Charlestown

Q&A



Thank you!

*for more information about this planning process
visit: bostonplans.org/PlanCharlestown*