

PLAN: Downtown

# Open House Summary



Building on past studies, the primary goal of the study will be to develop a new framework for the preservation, enhancement, and growth of the Downtown area of the City of Boston, while balancing the importance of livability, daylight, walkability, climate change, access to open space, affordability, and a dynamic mix of uses, among others.



Learn more:  
[bit.ly/plandowntownboston](https://bit.ly/plandowntownboston)  
[@bostonplans](https://twitter.com/bostonplans)  
[#plandowntownboston](https://twitter.com/plandowntownboston)

# Study Area



## KEY

 Study Area Boundary

 Institutional Master Plan (IMP)  
*Not included in this study*

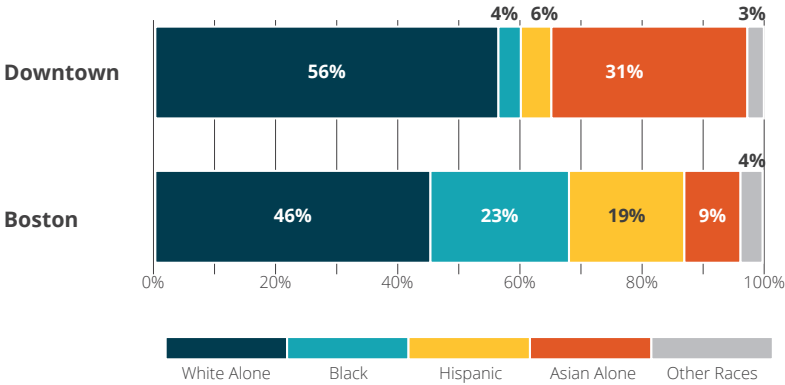
# Process & Timeline



# Living in Downtown

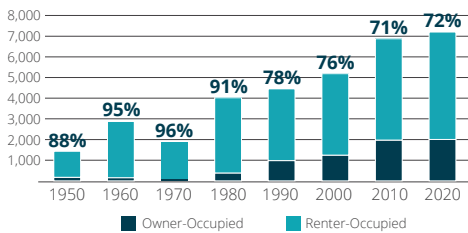
Downtown is home to a growing, diverse set of residents. Who lives Downtown? While Downtown has only recently started to become more of a residential neighborhood, Chinatown has had a long history of being the first home for many new immigrants. The population grew 48% from 2000 to 2015.

## Race and Ethnicity, 2015



Downtown has a higher percentage of White and Asian residents than Boston as a whole.

## Downtown Occupied Housing Units, 2015



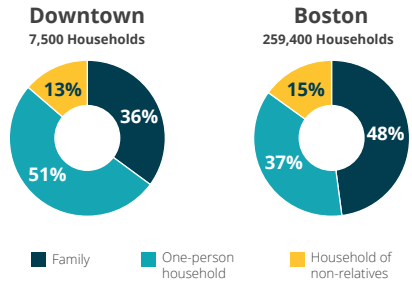
Downtown's growth is poised to continue, with 4,404 new housing units approved between 2020 and November 2018.

**7,500 households** live downtown

**8,790 housing units** (85% are occupied)

**36% families** (51% of households are single persons)

## Household Type, 2015



Downtown contains a greater percentage of single-person households than Boston as a whole.

**17,400 residents** live downtown

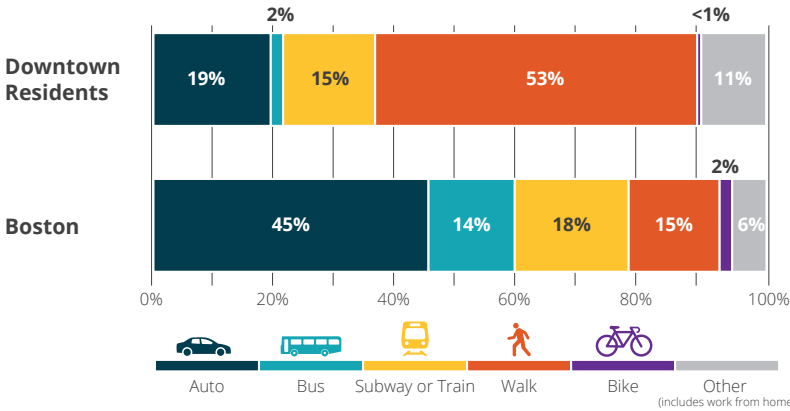
**28%** are enrolled in college or university

**60%** have bachelor's or more advanced degrees

# Working in Downtown

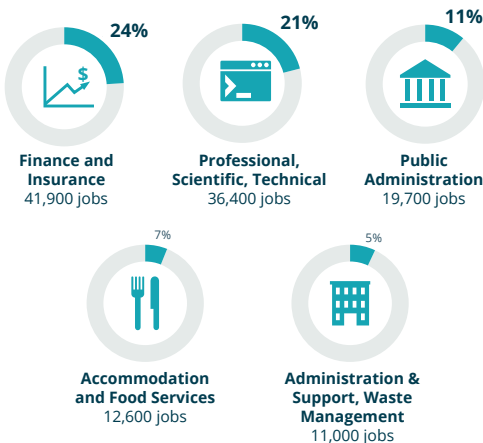
Downtown is Boston's economic engine for all kinds of businesses. People come from across the region to work Downtown. While the finance sector has traditionally been perceived as the most dominant sector, there is a diversity of businesses in Downtown. Downtown had over 171,000 payroll jobs and 30% of the payroll jobs in Boston in 2015.

## Means of Commuting, 2016



Over half of working Downtown residents walk to work and less than a fifth drive to work.

## Top Industries in Downtown, 2015



**171,130 payroll jobs** in comparison to 54,880 jobs in Back Bay and 31,120 jobs in South Boston Waterfront

**8% increase** in payroll jobs from 2011 to 2015

**50%** of workers in a payroll jobs had bachelor's degree or higher

Nearly a quarter of jobs downtown are in the finance and insurance industry.

# Downtown's Public Realm

Downtown's public realm includes diverse spatial experiences, from traditional parks and playgrounds to more ephemeral spaces. Broadening our definition of public realm will be critical to bringing a richer and more nuanced public realm experience to Downtown Boston.



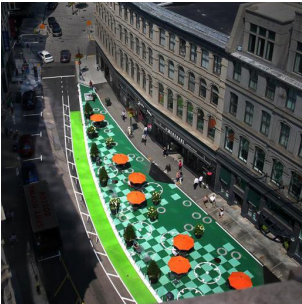
**City Hall Plaza**



**Irish Famine Memorial**



**Mary Soo Hoo Park**



**Tontine Crescent**



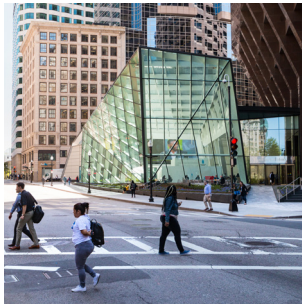
**Shoppers Plaza**



**Illuminus**



**Brattle Book Shop**



**100 Federal St. Atrium**



**Eliot Norton Park**

# Downtown's Historic Assets

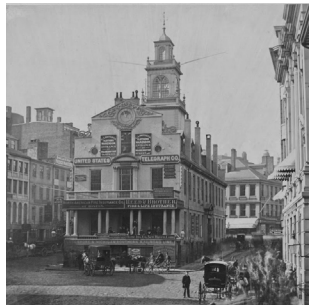
The juxtaposition of historic buildings and spaces alongside more modern buildings and infrastructure give Downtown Boston its unique identity. As Downtown Boston continues to grow, preservation of these historic assets will be key to maintaining Boston's character and charm.



**Paramount Theatre**



**Old Corner Bookstore**



**Old State House**



**Little Building**



**Proctor Building**



**Chinatown Gate**



**Temple Place**



**Boston Opera House**



**Third Masonic Temple**

# Stay Connected

---

## Contact

Kennan Rhyne, Senior Planner II  
kennan.rhyne@boston.gov  
617.918.4421

## Learn More

[bit.ly/plandowntownboston](https://bit.ly/plandowntownboston)  
[@bostonplans](https://twitter.com/bostonplans)  
[#plandowntownboston](https://twitter.com/plandowntownboston)

## Planning Team

Boston Planning & Development Agency  
NBBJ, Planning & Urban Design  
HR&A Advisors, Economic Development  
Arup, Sustainability & Transit  
Kittleson & Associates, Transportation Planning  
Boston Conversation Associates, Historic Preservation  
Engagement Lab, Public Engagement  
Ground, Inc., Landscape Architecture  
Nitsch Engineering, Blue & Green Infrastructure  
HLB Lighting Design, Lighting Strategy & Design