

PLAN: Glover's Corner

Preserve. Enhance. Grow.



Proposed Requirements for New Streets

Setback and "Right-of-way" requirements ensure that there is enough space for both new public streets and improvements to existing streets such as wider sidewalks and bike infrastructure.



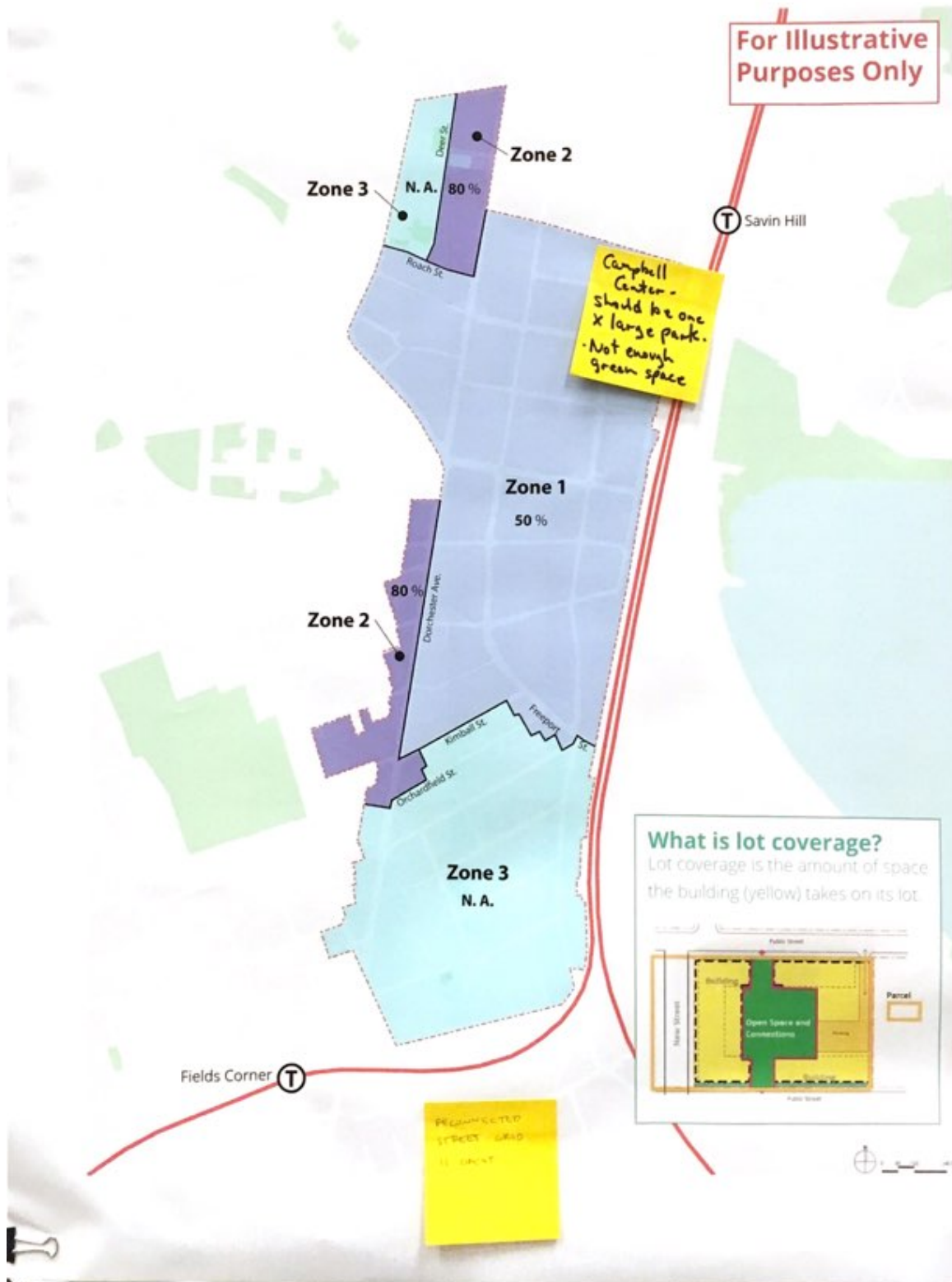
PLAN: Glover's Corner

Preserve. Enhance. Grow.



Proposed Lot Coverage Requirements

A 50% Lot Coverage maximum regulation will help regulate the creation of new open space, streets, and sidewalks.



PLAN: Glover's Corner

Preserve. Enhance. Grow.



Proposed Allowed Heights

Heights range from 45 feet to 150 feet. Near existing residential areas, heights will be less than 45'



PLAN: Glover's Corner

Preserve. Enhance. Grow.



Stepped Urban Design Concept

Heights range from 45 feet to 150 feet. Near existing residential areas, heights will be less than 45'

Sketch of what **45 feet tall** buildings on Dorchester Avenue feel like



Existing Conditions



Images are for illustrative purposes only.

Sketch of what **70 to 150 feet tall** buildings near a linear park feel like



Existing Conditions

MAKE SURE TO TAKE FLOODING FROM RAIN INTO ACCOUNT

Large parking area for future development



Images are for illustrative purposes only.

Sketch of what **150 feet tall** buildings near Hoyt Street feel like



Existing Conditions

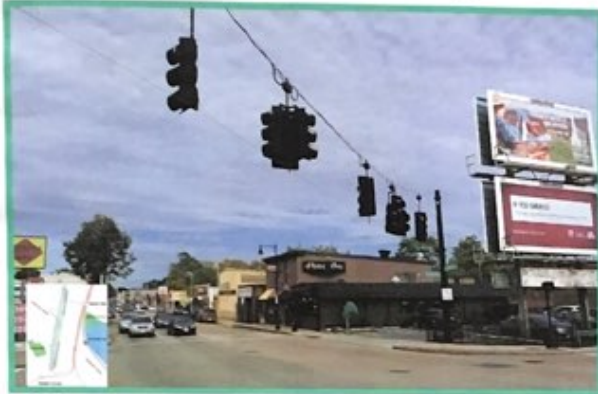


Images are for illustrative purposes only.

Stepped Urban Design Concept

Heights range from 45 feet to 150 feet. Near existing residential areas, heights will be less than 45'

Sketch of what **70 feet tall** buildings on Dorchester Avenue feel like



Existing Conditions



Images are for illustrative purposes only

Sketch of what **40 feet tall** buildings feel next to existing "preserve" areas



PROBLEM
 CONNECTING FROM NEW
TRAFFIC FROM
 GLOVER'S CORNER, DORCHESTER
 GLOBE, CHANNEL ST, MT VERNON ST,
 MCGORMICK HOUSING AS A
 REGIONAL ISSUE.
WHO IS DOING THIS
 REGION'S TRANSPORTATION
 PLAN?

LOT OF NON
 WANTS HERE
 ON ADDRESS
 HOW DOES
 TRANSPORTATION
 WORK

IS SOMEONE
 RESPONSIBLE
 FOR THIS
 TRANSPORTATION
 PLAN?