

Stay up-to-date with COVID-19 related announcements,
City of Boston reopening plans, and resources
for you and your community, visit:

[boston.gov/coronavirus](https://www.boston.gov/coronavirus)

Homeowner and Tenant Relief can be found through the
resources at think link above or visiting the Boston Home Center
and Office of Housing Stability webpages.

PLAN: Mattapan - Virtual chat with a Planner



June 3, 2020

We want to ensure that this conversation is a pleasant experience for all attendees.

As such, all participants will be in listen only mode until the Q+A portion of the conversation. Attendees will be able to use the “Raise Hand” function in GoToWebinar and a BPDA moderator will allow attendees to unmute in an orderly manner.

Please be respectful of each other’s time.

We ask that participants limit their questions so that others may participate in the discussion. If you have more questions, please wait until all others attending have an opportunity to ask questions. As a reminder, you can always set up a conversation with Kenya Beaman, the Mattapan Community Engagement Manager.

Be kind to others.

Please treat others with dignity and respect. All participants should act as if this discussion were held in public.

If you are joining only by phone,

unfortunately, you will not be able to ask questions. If you are joining using a web browser but using phone audio, you should be able to still raise your hand to ask questions. Again, you are welcome to contact Kenya Beaman for any additional questions you may have.

The BPDA is piloting this platform.

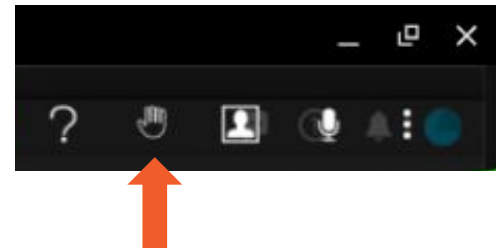
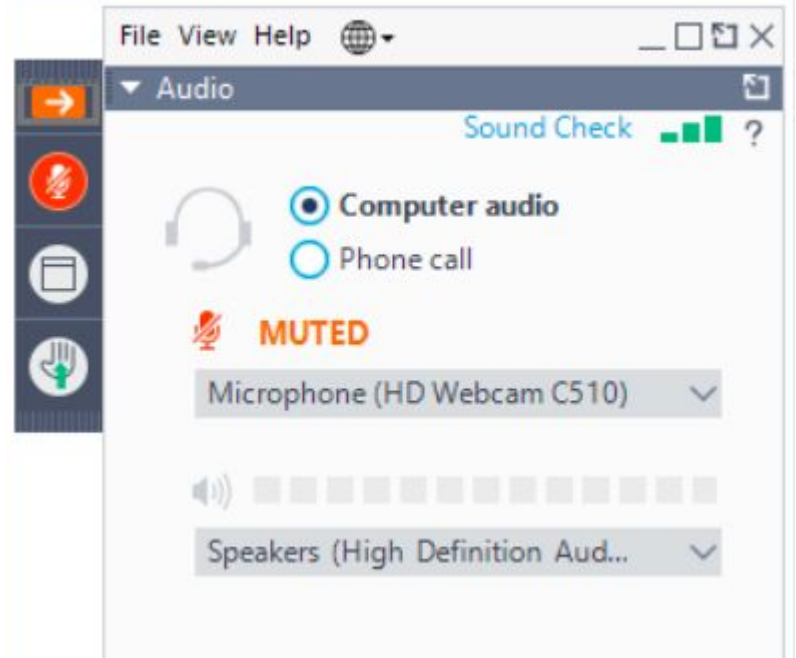
If you have feedback regarding this platform, it’s functionality, or use, please let us know.

During the Q+A Portion

If you would like to ask a question, please use the “raise hand” feature in GoToWebinar. By clicking the icon shown to the right, you will signal to staff that you wish to speak.

If your hand is raised, the arrow will turn **red**. Prior to your turn, a staff member will announce your name and unmute your microphone.

Please be respectful of others and limit your questions to one until all others have had an opportunity to speak.



1 What is the planning team working on?



WHAT WE HAVE DONE

FUTURE PROCESS



● WORKSHOPS

● COMMUNITY ENGAGEMENT EVENTS
Chat with a Planner

○ FUTURE WORKSHOPS

○ FUTURE COMMUNITY ENGAGEMENT EVENTS

PLAN: MATTAPAN WILL

“ Strengthen the existing culture and stability of the community by supporting **affordable housing**, creating opportunities for **businesses** to thrive, and enhancing **connections** to improve the neighborhood's experience accessing jobs and **spaces where people gather**. ”

What is happening with our input from our last workshop?

At the end of February, we discussed Mattapan's corridors and what those corridors could look like according to residents. We are processing that feedback and will share the results when we return to public workshops.

Instructions (5 mins)
Rank the goals for each value category below from 1 - 4 for their importance to your community's values.

First name: _____
Age: _____
Gender: _____

VALUES & GOALS

Housing

- Existing rates of **home ownership** are preserved.
- Existing rates of **affordability** are preserved and enhanced.
- Future development offers a diverse mix of **housing types**.
- Participation in existing housing programs increases.

Jobs + Economy

- The number of **resident-owned small businesses** grows.
- Existing community and businesses **wealth and incomes** rise.
- Increase in businesses that are frequented by **Mattapan residents and visitors**.
- Increase **access to jobs outside of and employment opportunities** within the neighborhood.

Mobility

- Number of **fatal and injury crashes** decreased.
- Households with access** to rapid transit, bikeshare and carshare increases.
- Comfort and connectivity** of walking and biking access to civic centers within Mattapan increases.
- Commute time** via public transportation to job centers outside of the neighborhood is decreased.

People + Places

- Quantity and diversity of **public spaces** available grows and provides opportunities for people to gather.
- Access** to educational, civic and open spaces is increased.
- Preserve and strengthen** the existing culture and community.
- Identify and implement **placemaking** strategies to emphasize community identity.

PLAN: MATTAPAN - CORRIDOR WORKSHOP

Individual Exercise

Instructions (15 mins)

- Select three "community improvements" that you would most like to see along major corridor as a result of development in your neighborhood.
- Select three "buildings" that you would most like to see along major corridor in your neighborhood.
- Tally your total points for both "buildings" and "community improvements". Keep in mind that the points for community improvements and points for buildings should be roughly equal.

NOTE: Higher denaries have higher point values and may get you more of the community improvements that you want: parks, parking lots, affordable housing, commercial retail space, improved streets and sidewalks, etc.

Community Improvements

10	Affordable Housing Unit Category: Housing Jobs + Economy: 10 Mobility: 10 People + Places: 10	60	Streetscape Improvements Category: Mobility Jobs + Economy: 60 Mobility: 60 People + Places: 60	120	Pocket Park Category: People + Places Jobs + Economy: 120 Mobility: 120 People + Places: 120	4	Off-Street Parking Category: Mobility Jobs + Economy: 4 Mobility: 4 People + Places: 4
----	--	----	--	-----	---	---	---

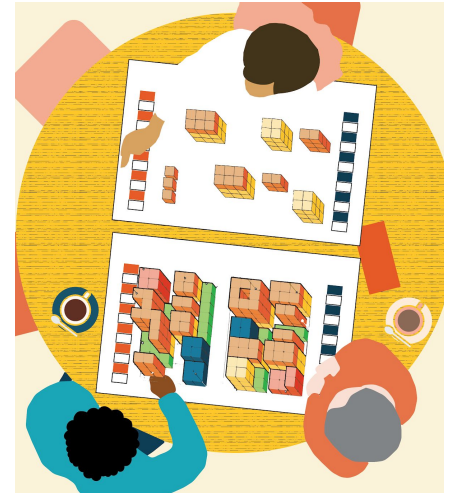
10 x + 60 x + 120 x + 4 x = Total Points

Buildings

60	Apartments with Commercial Category: Housing Jobs + Economy: 60 Mobility: 60 People + Places: 60	3	Triplex or Duplex Category: Housing Jobs + Economy: 3 Mobility: 3 People + Places: 3	1	Single Family or ADU Category: Housing Jobs + Economy: 1 Mobility: 1 People + Places: 1	60	Commercial Improvements Category: Jobs + Economy Jobs + Economy: 60 Mobility: 60 People + Places: 60
----	---	---	---	---	--	----	---

60 x + 3 x + 1 x + 60 x = Total Points

PLAN: MATTAPAN - CORRIDOR WORKSHOP

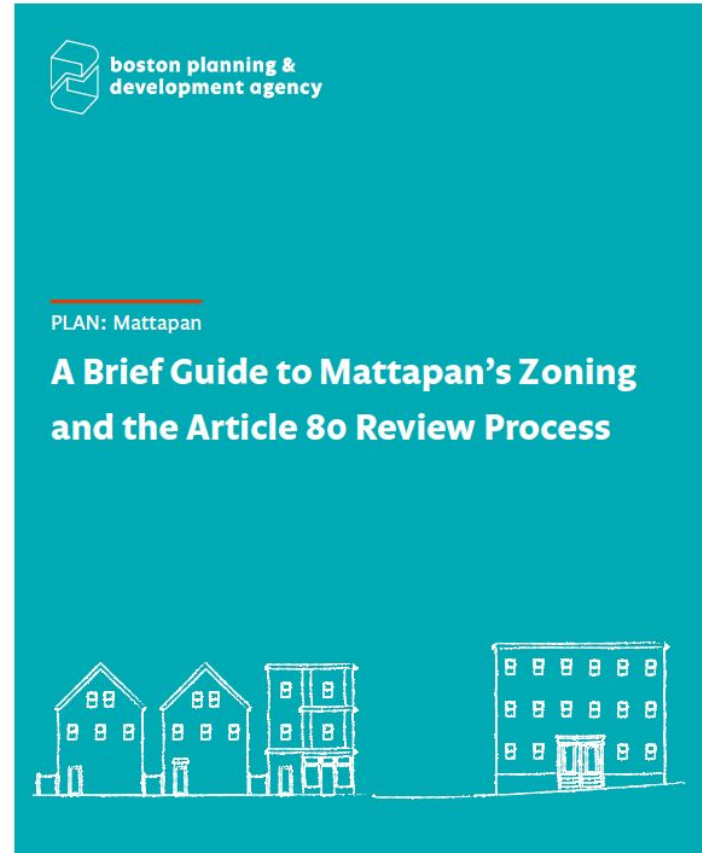


What is an existing conditions report?

An existing conditions report describes planning data as it exists currently in the neighborhood. You can think of it as a more in-depth version of the Data Packet released in March 2019, updated in June 2019, and available on our website.

What is in the report?

You can expect to see quantitative data related to the major planning themes for PLAN: Mattapan: Housing, Demographics, Mobility, Open Space, and the History of Mattapan. This information helps inform our next phase of planning which is focused on the “How.”



Some of the team's volunteer work:

- Distributing COVID-19 pamphlets with hand sanitizer to senior living facilities and door to door to constituents
- Passed out flowers to seniors on mother days
- Assembled hand sanitizer packets for non profit organizations, homeless and city programs across the city
- Boston Public Health Commission Mattapan Food Pantry been there for 10 weeks preparing and distributing food baskets
- Food deliveries in the neighborhood in partnership with the Office of Food Access



Visit the PLAN: Mattapan Website:

bit.ly/PlanMattapan

Contact our Community Engagement Manager:

Kenya Beaman

kenya.p.beaman@boston.gov

2 How does COVID-19 impact planning?



The BPDA is exploring digital engagement opportunities.

We are currently exploring ways of engaging with you regarding our planning initiatives. Our first priority is ensuring the safety and well-being of you and other community members.

We can't say for certain when we will return to hosting public meetings in-person or virtually. However, we can assure you that we are still committed to robust community input for the PLAN: Mattapan process.



PLAN: Mattapan
Virtual Chat with a Planner
June 03, 2020 | 6:00 PM - 7:00 PM



Register at <https://bit.ly/PlanMattapanCWP>

As with all of our Chat with a Planner sessions, no new content will be issued and no decisions will be made.

Interested in chatting with staff but unable to join? Please contact Kenya Beaman at kenya.p.beaman@boston.gov to schedule a time to chat.

bit.ly/PlanMattapan | [@bostonplans](https://twitter.com/bostonplans) | [#bostonplans](https://facebook.com/bostonplans) | [#planmattapan](https://twitter.com/planmattapan) | 617-918-4340

Mattapan Neighborhood Interaction and COVID-19 Survey:

bit.ly/PlanMattapan

Deadline to Submit Survey:

June 30, 2020

We are committed to thoroughly understanding the impacts of our planning.

COVID-19 has highlighted how necessary community resilience is to our neighborhoods. In addition to climate resilience we will continue to work to ensure that planning recommendations support a resilient community.

Part of community resilience includes growing community assets that have been working. We will work with you to identify those assets and explore how to enhance them.

Stay up-to-date with COVID-19 related announcements,
City of Boston reopening plans, and resources
for you and your community, visit:

[boston.gov/coronavirus](https://www.boston.gov/coronavirus)

Homeowner and Tenant Relief can be found through the
resources at think link above or visiting the Boston Home Center
and Office of Housing Stability webpages.

2 Questions + Answers

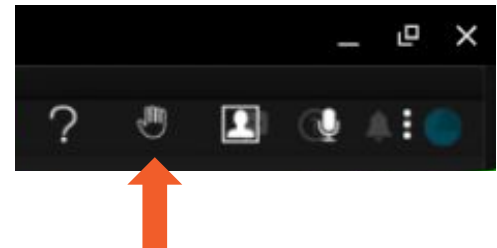
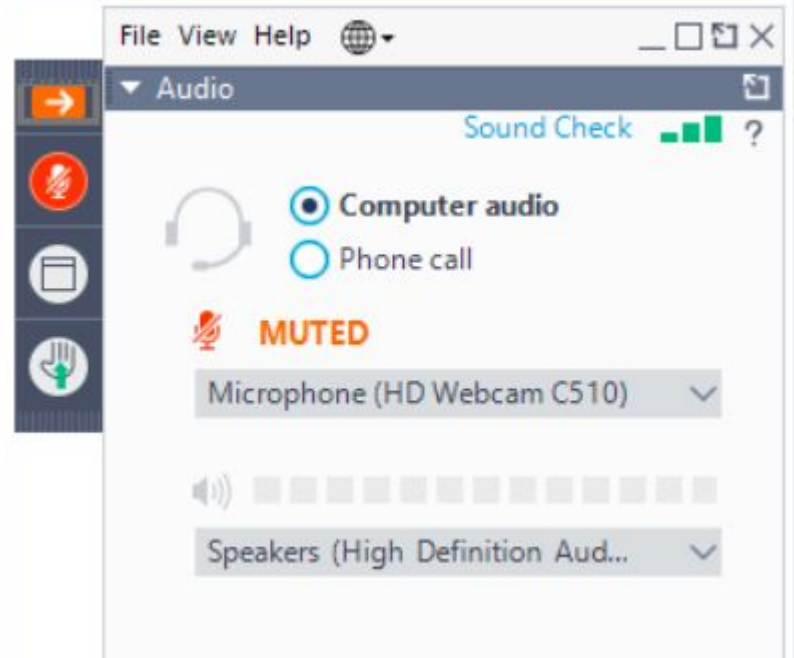


During the Q+A Portion

If you would like to ask a question, please use the “raise hand” feature in GoToWebinar. By clicking the icon shown to the right, you will signal to staff that you wish to speak.

If your hand is raised, the arrow will turn **red**. Prior to your turn, a staff member will announce your name and unmute your microphone.

Please be respectful of others and limit your questions to one until all others have had an opportunity to speak.



Stay up-to-date with COVID-19 related announcements,
City of Boston reopening plans, and resources
for you and your community, visit:

boston.gov/coronavirus

Homeowner and Tenant Relief can be found through the
resources at think link above or visiting the Boston Home Center
and Office of Housing Stability webpages.