

Anrejistreman Reyinyon an

Sou demann manm kominote yo, BPDA a pral anrejistre reyinyon sa a epi l ap afiche l sou paj entènèt pwojè **PLAN: Mattapan** nan sou **bit.ly/PlanMattapan** pou sila ki pa anmezi pou patisipe nan reyinyon andirèk la sou Zoom.

Anrejistreman an ap gen ladan prezantasyon an, Kesyon ak Repons (Q+A), epi kòmantè piblik la apre. Epitou, li posib ke patisipan yo ka anrejistre reyinyon an ak kamera telefòn yo oswa ak lòt aparèy. **Si w pa ta swete yo anrejistre w pandan reyinyon an, tanpri etenn mikwofòn ou ak kamera w.**



**boston planning &
development agency**

Pou koute sesyon an an kreyòl ayisyen, tanpri itilize kanal la an kreyòl ayisyen

Para escuchar la sesión en español, por favor utilice el canal en español

Gid pou itilize Zoom

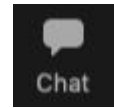
Byenvini! La a w ap jwenn kèk konsèy pou moun k ap itilize Zoom pou premye fwa.

Kòmman yo ta dwe parèt sou pati anba ekran an.

Lè w klike sou senbòl sa yo sa ap pèmèt ou aktive diferan fonksyonalite:



Mete sou silans/retire sou silans (tanpri rete sou silans pou limite bwi k ap fèt nan fon yo)



Itilize seksyon pou kominike (tchat) la pou w ka tape kesyon w yo pandan prezantasyon an



Aktive/dezaktive fonskyon videyo a

Seleksyone reyaksyon yo epi ikòn leve men an pou w leve men w pou w poze yon kesyon pandan sesyon Kesyon ak Repons (Q+A) a



Koute prezantasyon an nan yon lòt lang



boston planning & development agency

Pou koute sesyon an an kreyòl ayisyen, tanpri itilize kanal la an kreyòl ayisyen

Para escuchar la sesión en español, por favor utilice el canal en español

Fòm a Reyinyon an

- Prezantasyon an epi apresa sesyon Kesyon ak Repons (Q+A) epi kòmantè.
- Pandan prezantasyon an, tout mikwo yo dwe sou silans.
- Yon fwa ke prezantasyon an fini, n ap pran kesyon ak kòmantè yo nan de fason:



Atravè onglè Kominikasyon (**tchat**) la ki sou pati anba ekran w lan; oswa



Ou ka **leve men** w epi n ap pran kesyon w yo. Ou ka retire tèt ou sou silans lè yo chwazi w pou w pale.



Kòd Sosyal pou Reyinyon Vityèl

- Nou vle asire nou ke konvèsasyon sa a se yon eksperyans ki enteresan pou tout moun.
- Tout patisipan yo dwe rete sou silans pandan prezantasyon an pou limite bwi k ap fèt nan fon yo. Patisipan yo ap anmezi pou yo soumèt kesyon yo atravè fonksyonalite kominikasyon (tchat) la oswa y ap anmezi pou leve men yo pou yo poze kesyon.
- Tanpri respekte tan ke yo bay nou chak la.
- N ap mande patisipan yo pou yo limite kesyon yo konsa tout moun ap ka patisipe nan diskisyon an.
- Tanpri rete tann jiskaske tout patisipan yo jwenn opòtinite pou poze yon kesyon anvan w poze yon lòt kesyon ou menm.
- Ou ka toujou òganize yon konvèsasyon avèk Kenya Beaman

[\(kenya.p.beaman@boston.gov\)](mailto:kenya.p.beaman@boston.gov)



**boston planning &
development agency**

Resous pou COVID-19

Rete enfòmè gras ak anons ki gen rapò ak COVID-19 yo, sou plan Vil Boston genyen pou li relouvri yo, ak sou resous pou ou ak pou kominote w la nan:

boston.gov/coronavirus

Enfòmasyon ki ladann nan disponib nan 16 lang.



The screenshot shows the City of Boston website header with the logo, Mayor Martin J. Walsh's name, and navigation links for 'PAY AND APPLY' and 'PUBLIC NOTICES'. The main heading is 'CORONAVIRUS DISEASE (COVID-19) IN BOSTON'. Below the heading, there is a paragraph of text: 'The state has updated guidance on the Reopening Massachusetts website. We also continue to update City-specific guidance for Boston on our reopening website.' To the right, it says 'July 12, 2020' and 'PUBLISHED BY: PUBLIC HEALTH COMMISSION'. Below that, there is a section for 'MULTILINGUAL CONTENT' with links for Arabic, Kriolu (Cabo Verdean creole), Chinese, Français (French), Kreyòl ayisyen (Haitian Creole), Português (Portuguese), and Русский (Russian). At the bottom, it says 'BOSTON (AS OF FRIDAY, JULY 10)' and '13,673 CASES | 9,683 RECOVERED'.

Mizajou epi Rapèl pou Resansman 2020

Dat Enpòtan:

- 11 dawout -N ap kòmanse frape pòt.
- 30 septanm -Dènye jou pou reponn.

Enfòmasyon Rapid:

- Nan dat 7/7 (7 jiyè), 52.2% (anviwon 175,800) fwaye nan Boston reponn.
- An 2010, to repons final la te 64.4%.

Resansman an pa t janm pi aksesib konsa. Ou ka reponn:

- Sou entènèt (my2020census.gov)
- Nan telefòn oswa nan imèl.
- Gen 13 lang diferan ki disponib.

Boston ap konte sou fwaye w la pou l reponn. Pou chak moun ki pa konte, se **prèske \$2,400** pa ane pou dis pwochen ane yo ki **pèdi** nan finansman federal.



Vini Travay pou Ajans Planifikasyon ak Devlopman Boston (BPDA)

Gen **9 pozisyon** afiche sou sit entènèt la BPDA.

- **5 pozisyon** yo se pozisyon a plen tan
- **4 pozisyon** yo se estaj

Pozisyon tonbe nan youn nan departman sa yo:

- Imobilye
- MIS/Enfòmasyon Teknoloji
- Rechèch
- Finans
- Boston Kowalisyon Èd Taks
- Planifikasyon Transpòtasyon

Vizite **bit.ly/BPDACareers** pou jwenn dènye afich yo



**boston planning &
development agency**

BPDA a se yon patwon opòtinite egal. Nou ankouraje moun ki sòti nan yon varyete orijin pou aplike pou travay nan BPDA la.

Vil reyinyon kap vini Boston yo

Boston Transportation Department (BTD):

[Blue Hill Avenue Transportation Action Plan, Sep. 30th](#)

[American Legion Highway, Sep. 24th and Sep. 26th](#)

Department of Neighborhood Development (DND):

[Blue Hill Avenue Action Plan, Sep. 30th and October 7th](#)

Public Works Department (PWD):

Pop-ups kap vini dat nan mwa Oktòb



**boston planning &
development agency**

Pou koute sesyon an an kreyòl ayisyen, tanpri itilize kanal la an kreyòl ayisyen

Para escuchar la sesión en español, por favor utilice el canal en español

Wotè ak Dansite: Yon Aktivite Koridò yo



23 septanm 2020

6:10 - 6:30

Byenvini ak Oryantasyon

6:30 - 7:30

Aktivite nan Sal Diskisyon yo

7:30 - 8:00

Diskisyon Gwo Gwoup ak Kloti



Pou koute sesyon an an kreyòl ayisyen, tanpri itilize kanal la an kreyòl ayisyen

Para escuchar la sesión en español, por favor utilice el canal en español

Swiv nan reyinyon anvan nou an

Nou reponn kesyon nou pa t 'jwenn nan sit entènèt nou an. [Klike la a.](#)



Navigation bar with logo, search icon, and menu items: About The BPDA | Contact Us | Get Involved | News | Calendar | Translate

Planning

What is Planning?

[Planning Initiatives](#)

Climate Change & Environmental Planning

Downtown & Neighborhood Planning

Privately Owned Public Spaces (POPS)

Regulatory Planning & Zoning

Transportation & Infrastructure Planning

Institutional Planning

Urban Design

Urban Renewal



PLAN: Mattapan

[Community Engagement](#)

[Most Recent Engagement](#)

[Workshop Materials](#)

STAY CONNECTED

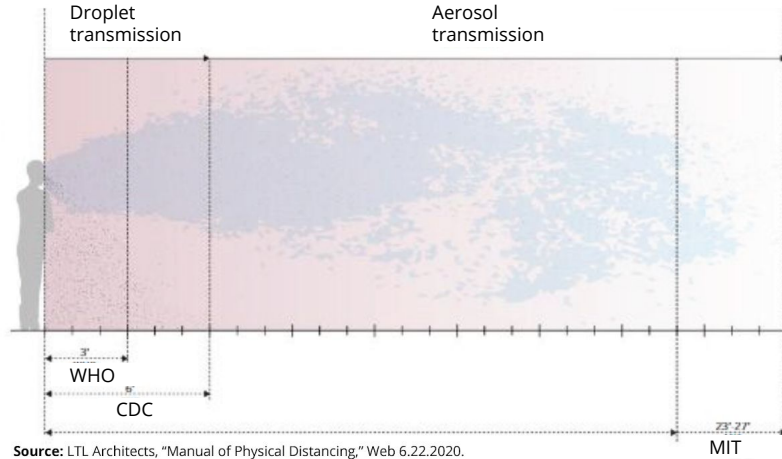
Sign up for Neighborhood Email Updates!

Pou route sesyon an an kreyòl ayisyen, tanpri itilize kanal la an kreyòl ayisyen

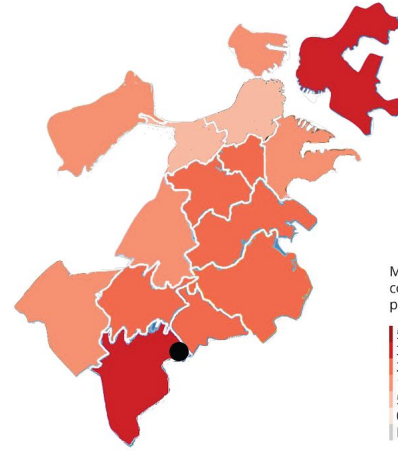
Para escuchar la sesión en español, por favor utilice el canal en español

Kouman COVID-19 gen enpak sou domèn piblik la?

COVID-19 is spread through the **AIR** and can reach distances of 22-27 feet.



COVID-19 impacts neighborhoods differently.



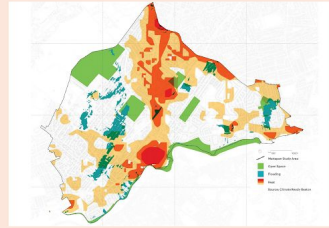
What are possible reasons for this? How can this data inform the guidelines and framework for PLAN: Mattapan?

Study links crowded housing in Greater Boston's poorer neighborhoods with spread of COVID-19

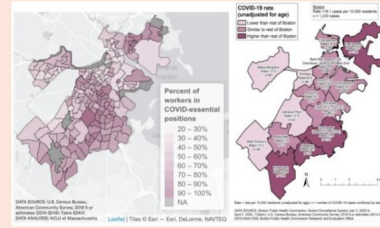
The Boston Foundation report found that many frontline workers' living conditions makes self-isolating nearly impossible.



overcrowded living conditions due to rising costs of housing



existing health conditions caused by higher rates of environmental toxins



a higher ratio of essential workers commuting to high-transmission sites

Demands of 'Essential' Work Put Boston's Neighborhoods of Color at Higher Risk

By Christian Matthei | Aug 27, 2020



reliance on public transportation to get to work & care

ANALYSIS OF GRADIENT EXPOSURE Urban Density Is Not Linked to Higher Infection Rates

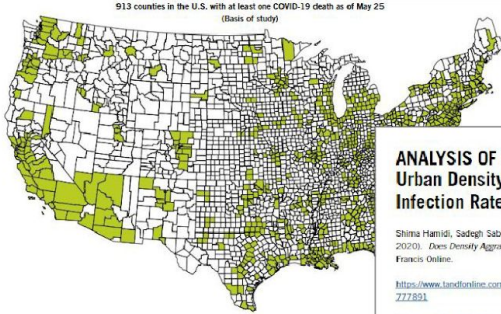
Shima Hamidi, Sadegh Sabouri, and Reid Ewing. (June 18, 2020). "Does Density Aggravate the COVID-19 Pandemic?" Taylor & Francis Online.

<https://www.tandfonline.com/doi/full/10.1080/01944363.2020.1777891>

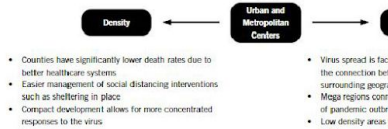
Though it is assumed that dense areas lead to more face-to-face interaction among residents, which makes them potential hotspots for the rapid spread of pandemics, this study suggests that dense urban areas are associated with lower COVID-19 death rates. When accounting for other factors like race and education, it was found that density was not significantly associated with county infection rate. Rather, the higher level of development that comes with dense urban centers likely contributed to more developed healthcare systems that aided in the lowering of death rates in these regions. The findings suggest that connectivity matters more than density in the spread of the COVID-19 pandemic. Large metropolitan areas with a higher number of counties tightly linked together through economic, social, and commuting relationships are the most vulnerable to the pandemic outbreaks.

"These findings suggest that urban planners should continue to practice and advocate for compact places rather than sprawling ones, due to the myriad well-established benefits of the former, including health benefits." — Shami Hamidi

"The fact that density is unrelated to confirmed virus infection rates and inversely related to confirmed COVID-19 death rates is important, unexpected, and profound." — Shami Hamidi



This analysis looks to challenge the assumption that densely populated cities are site of greater risk than areas of population sprawl. It finds that its dense urban areas are associated actually with lower Covid-19 death rates.

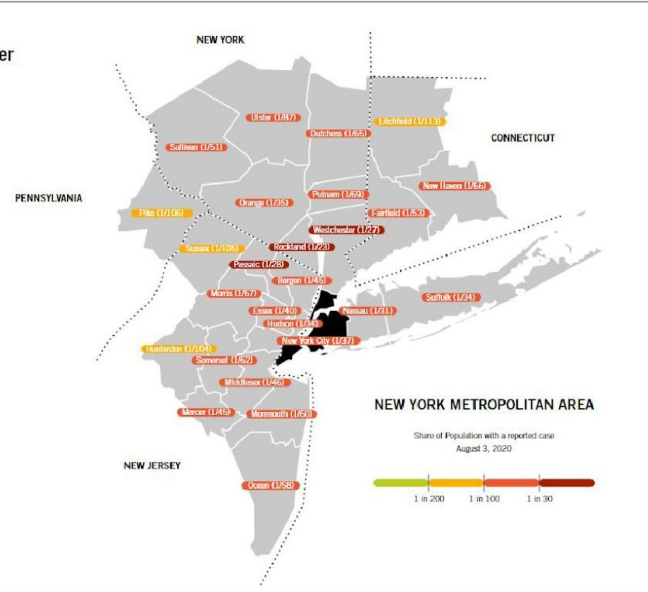


ANALYSIS OF GRADIENT EXPOSURE Urban Density Is Not Linked to Higher Infection Rates (continued)

Shima Hamidi, Sadegh Sabouri, and Reid Ewing. (June 18, 2020). "Does Density Aggravate the COVID-19 Pandemic?" Taylor & Francis Online.

<https://www.tandfonline.com/doi/full/10.1080/01944363.2020.1777891>

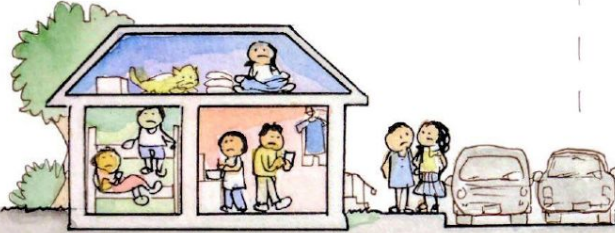
The perception of viral transmission is that there is a higher rate in areas with higher density. However, data from the New York Metropolitan area, including parts of New York State, Connecticut, New Jersey, and Pennsylvania shows suburban counties adjacent to New York City with a higher number of reported cases. Counties with a higher case count than New York City are Rockland, Westchester, Passaic, Nassau, Hudson, Suffolk, and Orange. While these counties have a significantly lower density than New York City, they are immediately reliant on the interstate highway system and public transit networks that facilitate the movement of goods and people through the region. These networks likely allow the virus to travel greater distances more quickly.



Source: LTL Architects, "Manual of Physical Distancing," Web 6.22.2020.

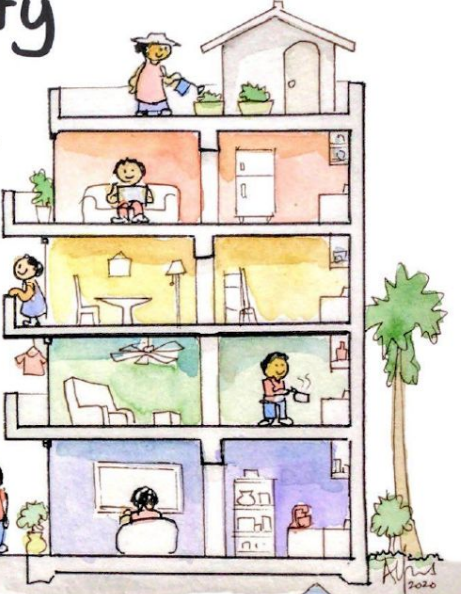
Overcrowding

Too many people in each home.



Density

Enough homes for all the people.



More Density = Less Overcrowding

CALIFORNIA
YIMBY



1

URBAN FRAMEWORK

This framework can ground mobility efforts and public realm enhancements.



Emphasize **multi-modal** transportation and both inter-neighborhood and regional accessibility.

Recommend **streetscape** and **public realm** improvements that create healthy outdoor spaces.

+

2

DESIGN GUIDELINES FOR DEVELOPMENT

These guidelines will guide investments at parcels and establish patterns of development.



Invest in well-designed affordable housing to **minimize overcrowding.**

Incentivize growth and sustainability of **locally-owned essential businesses** to minimize travel & build equity.

1

Kote nou ye kounye a?



Pou kouté sesyon an an kreyòl ayisyen, tanpri itilize kanal la an kreyòl ayisyen

Para escuchar la sesión en español, por favor utilice el canal en español

PLAN: Mattapan pral

“ **Ranfòse kilti ak estabilite kominote a ki egziste
deja nan sipòte **lojman a bon mache**, kreye
opòtinite pou **biznis** yo pwospere, ak amelyore
koneksyon yo pou amelyore eksperyans katye a
pou gen **aksè nan espas kote moun yo rasanble.** ”**

KISA NOU TE FE

PWOCHEN PWOSESIS



Nou isit la

ATELYE TRAVAY

AKTIVITE ANGAJMAN KOMINOT

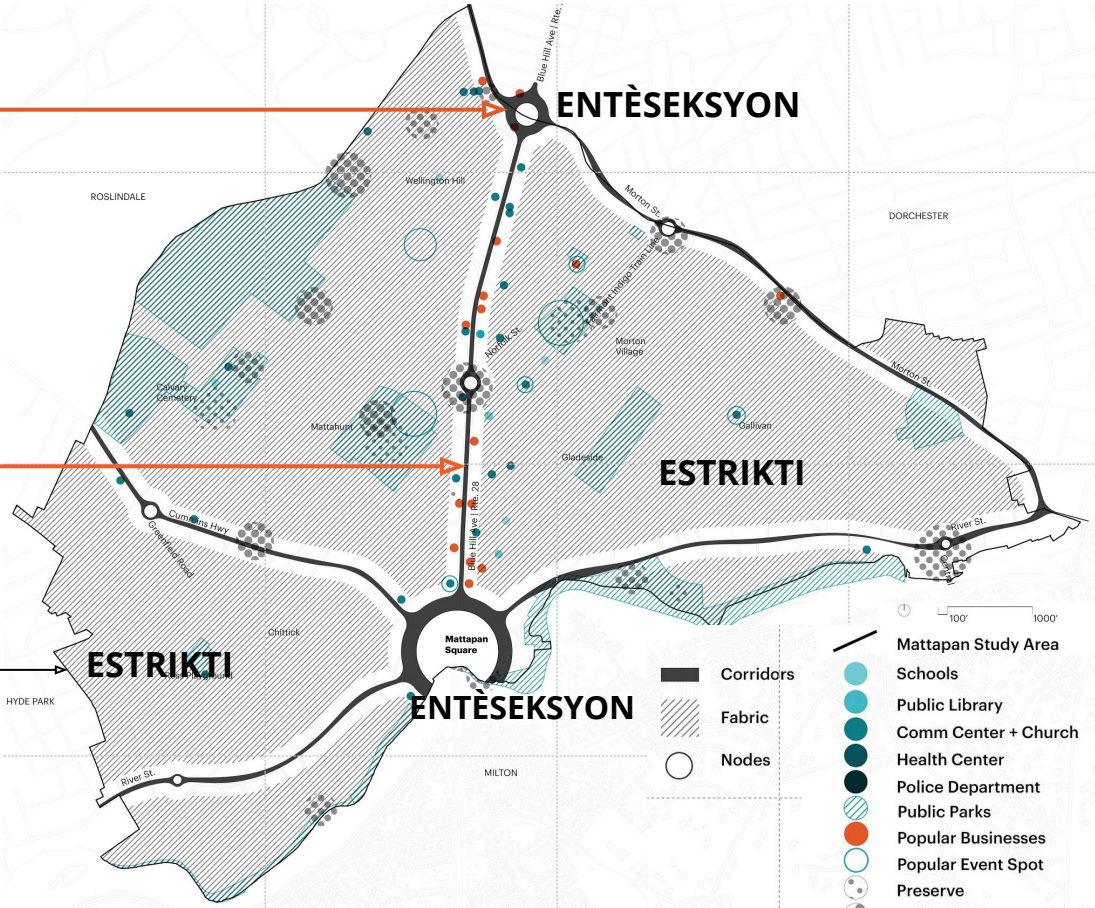
PWOCHEN ATELYE TRAVAY ; Corridors

PWOCHEN AKTIVITE ANGAJMAN KOMINOT

1. **Devlope masaj ki graj**
2. Revize ak analize enpak tankou transpò, lojman, elatriye
3. Ekri direktiv konsepsyon ak dekoupaj an zòn

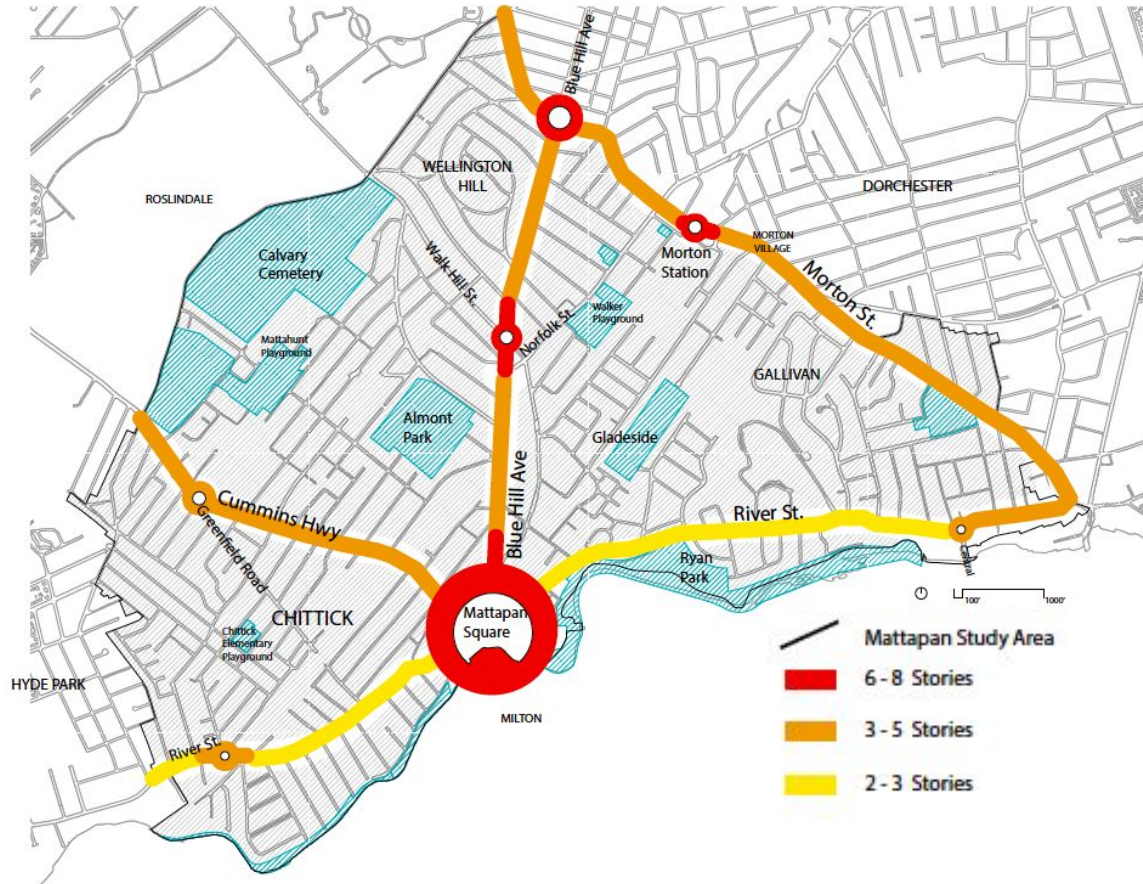
***Pou koute sesyon an an kreyòl ayisyen, tanpri itilize kanal la an kreyòl ayisyen
Para escuchar la sesión en español, por favor utilice el canal en español***

Domèn Sible yo pou PLAN: Mattapan

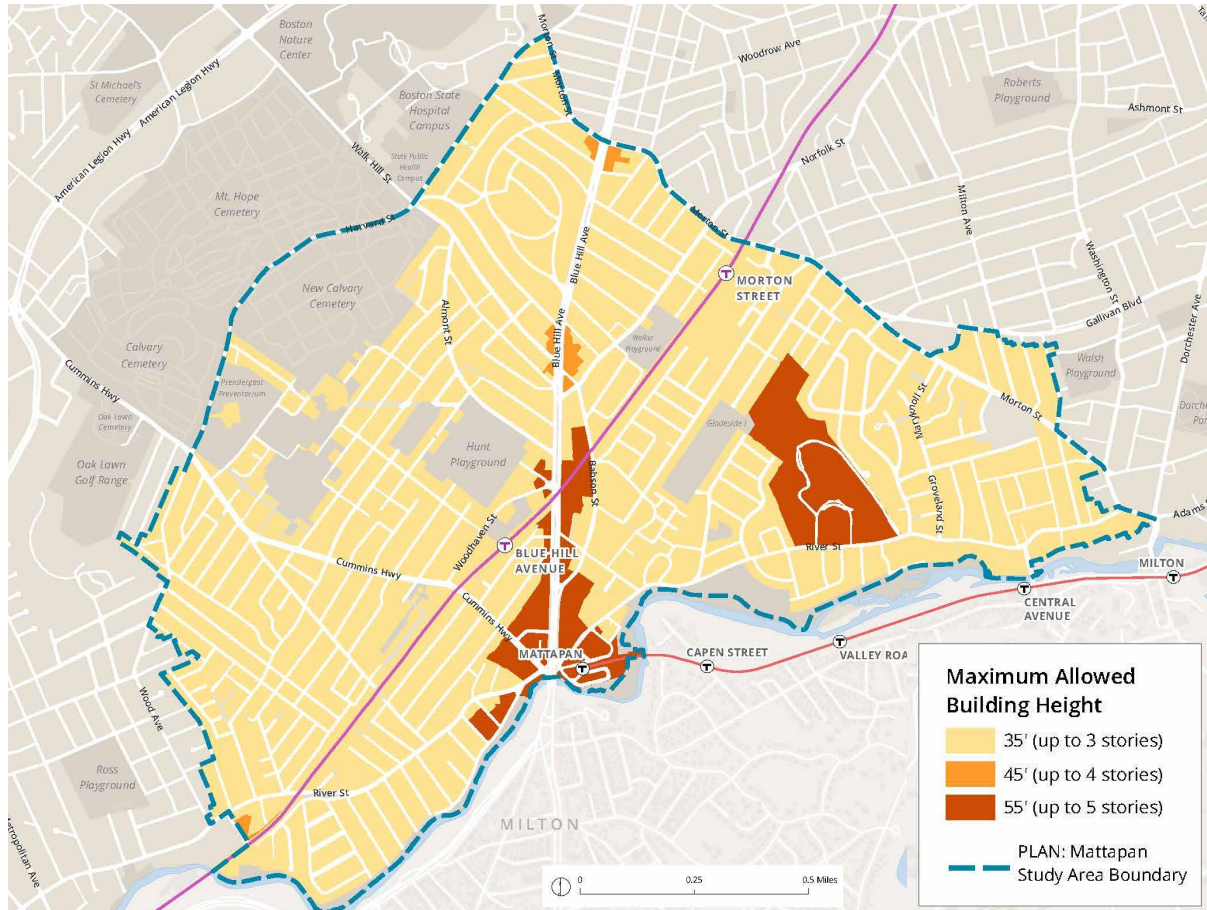


Ki Kote Dansite a ta Dwe Tonbe nan Koridò a?

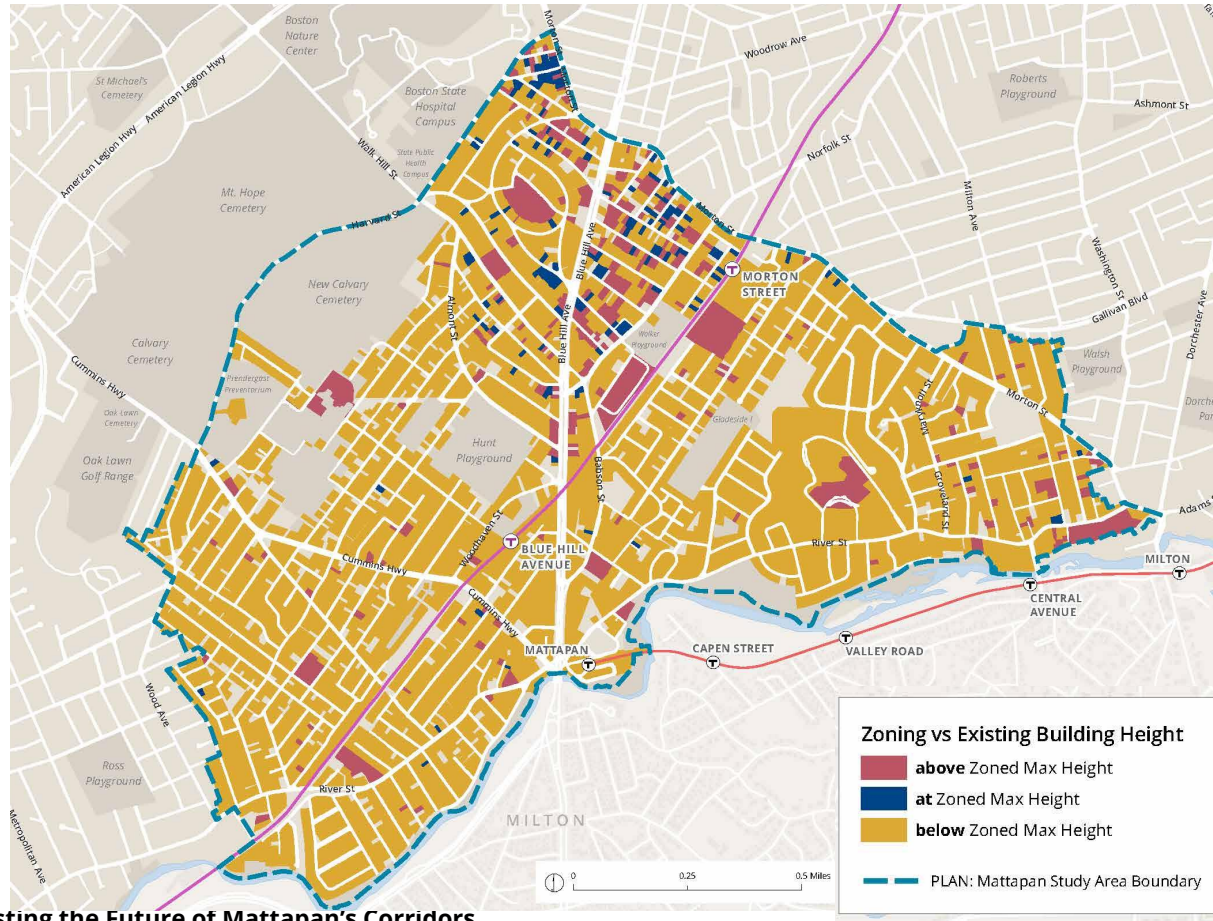
Dapre **sa nou te tande nan mwa fevriye a**, ekip k ap fè planifikasyon an panse ke senaryo ak dansite ki wo anpil la ta dwe konsantre nan zòn wouj yo, dansite mwayen an nan zòn oranj yo epi devlopman koridò ak dansite fèb nan zòn jòn yo.



Ki deja egziste pèmèt Zonaj Heights



Ki deja egziste Zoning vs Wotè bilding ki egziste deja



Pwojè resan nan koridò yo



Mattapan Station Redevelopment



1199-1203 Blue Hill Ave



73 River Street



150 River Street



422 River Street



775 Morton Street



Wellington at 1301



1120-1132 Washington Street



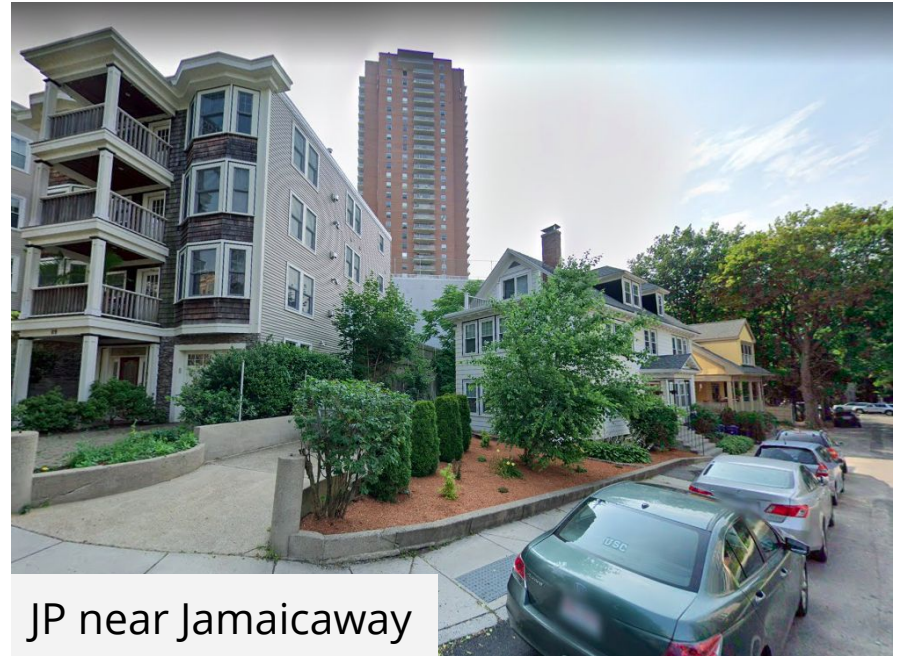
Cote Village

Kontèks:

Ak kisa zòn ki ozalantou yo sanble? Èske anplè yo pwopoze a fè sans lè nou konpare l ak sa ki egiste jodi a?



Blue Hill Ave and Almont St



JP near Jamaicaway

Lajè Wout yo:

Wout ki pi laj yo ka pran batiman ki pi wo pase wout ki pi sere yo.

W Fifth St, South Boston



Boylston St, Fenway



Pwoksimate parapò ak Transpò an Komen ak Lòt Amenajman:

Batiman rezidansyèl ki gen amenajman nan redchose yo tankou boutik k ap vann an detay, episri oswa restoran gen tandans pou yo pi laj paske li pi ekonomik. Moun yo renmen tou pou yo pi pre amenajman sa yo ak lòt yo tankou transpò an komen.



Centre St and Creighton St, JP



Mattapan Station

2 Aktivite

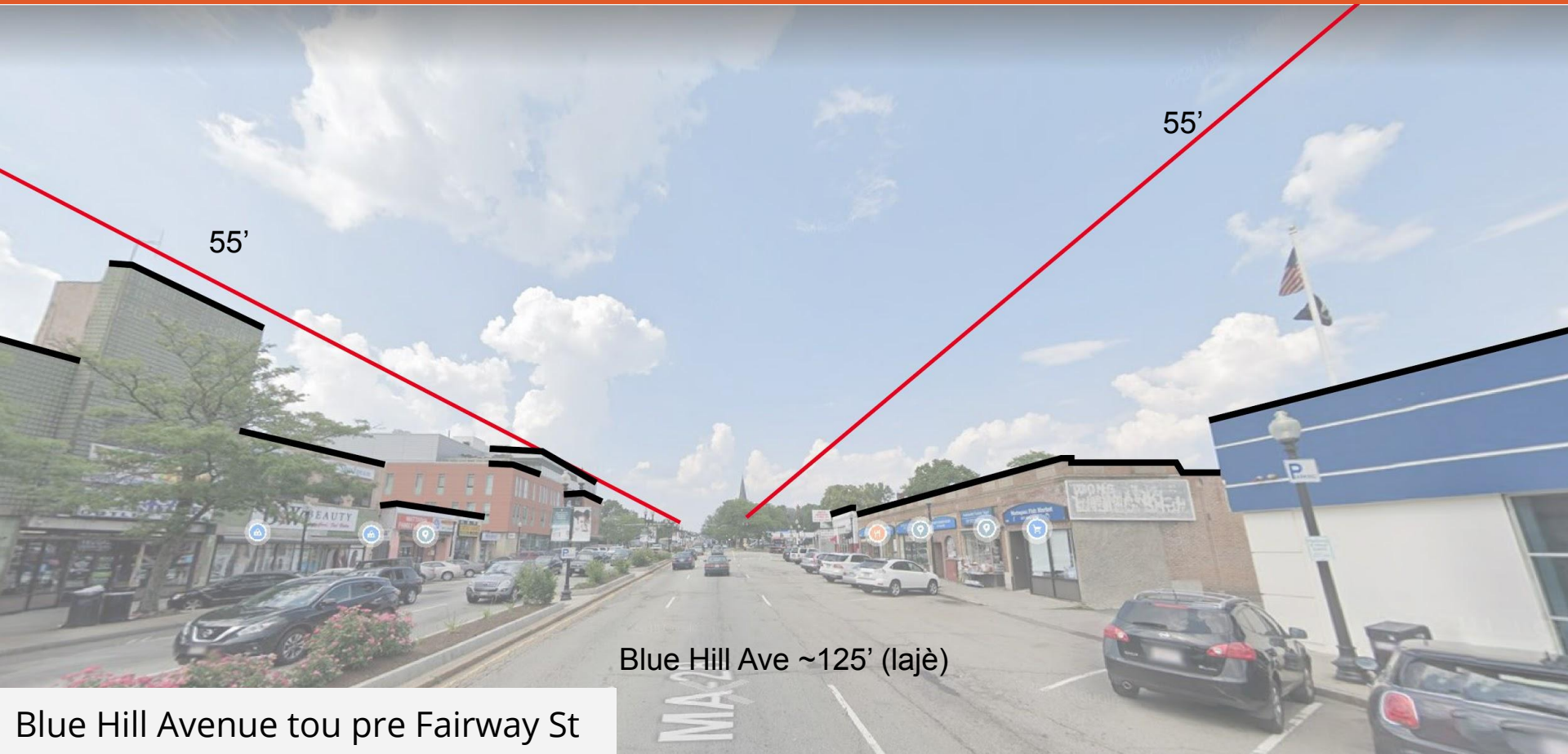


Egzanp Dansite Wo: Mattapan Square, ki Egziste



Blue Hill Avenue tou pre Fairway St

Egzanp Dansite Wo: Mattapan Square, Wotè Zonaj la



55'

55'

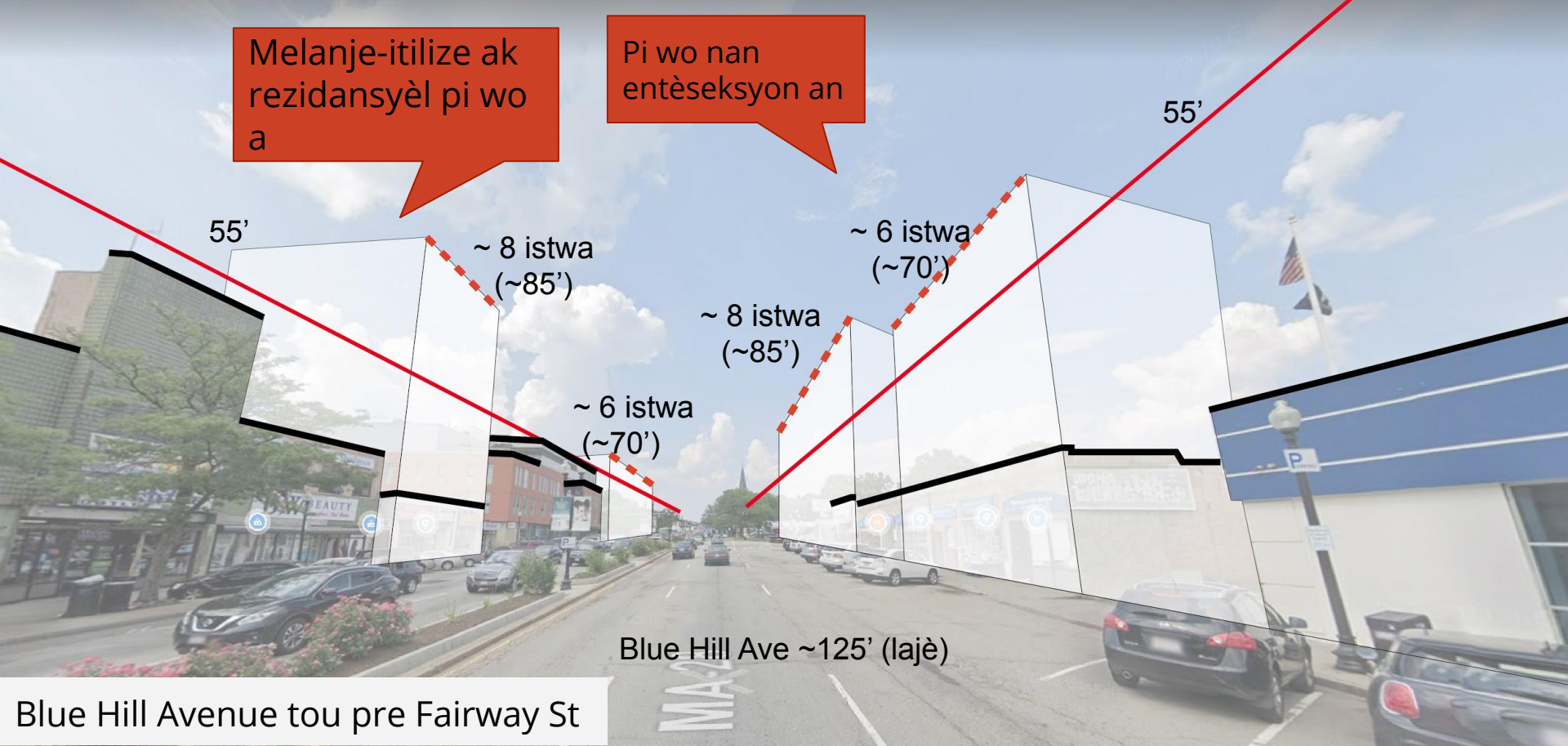
Blue Hill Ave ~125' (lajè)

Blue Hill Avenue tou pre Fairway St

Egzanp Dansite Wo: Mattapan Square, Pwopoze 6-8 istwa

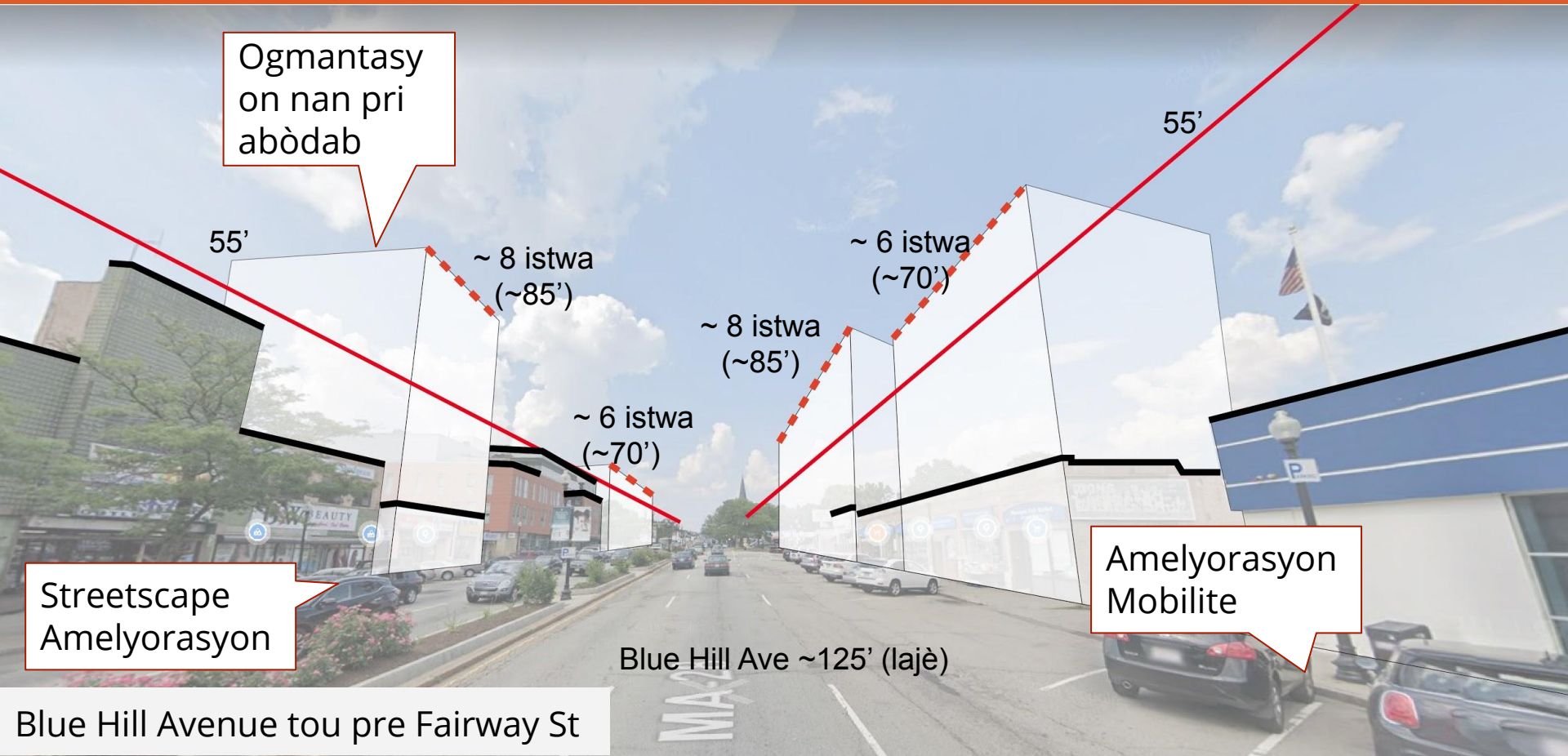
Melanje-italize ak rezidansyèl pi wo a

Pi wo nan entèseksyon an



Blue Hill Avenue tou pre Fairway St

Egzanp Dansite Wo: Mattapan Square, Benefis



Ogmantasy on nan pri abòdab

55'

~ 8 istwa (~85')

~ 6 istwa (~70')

~ 8 istwa (~85')

~ 6 istwa (~70')

55'

Streetscape Amelyorasyon

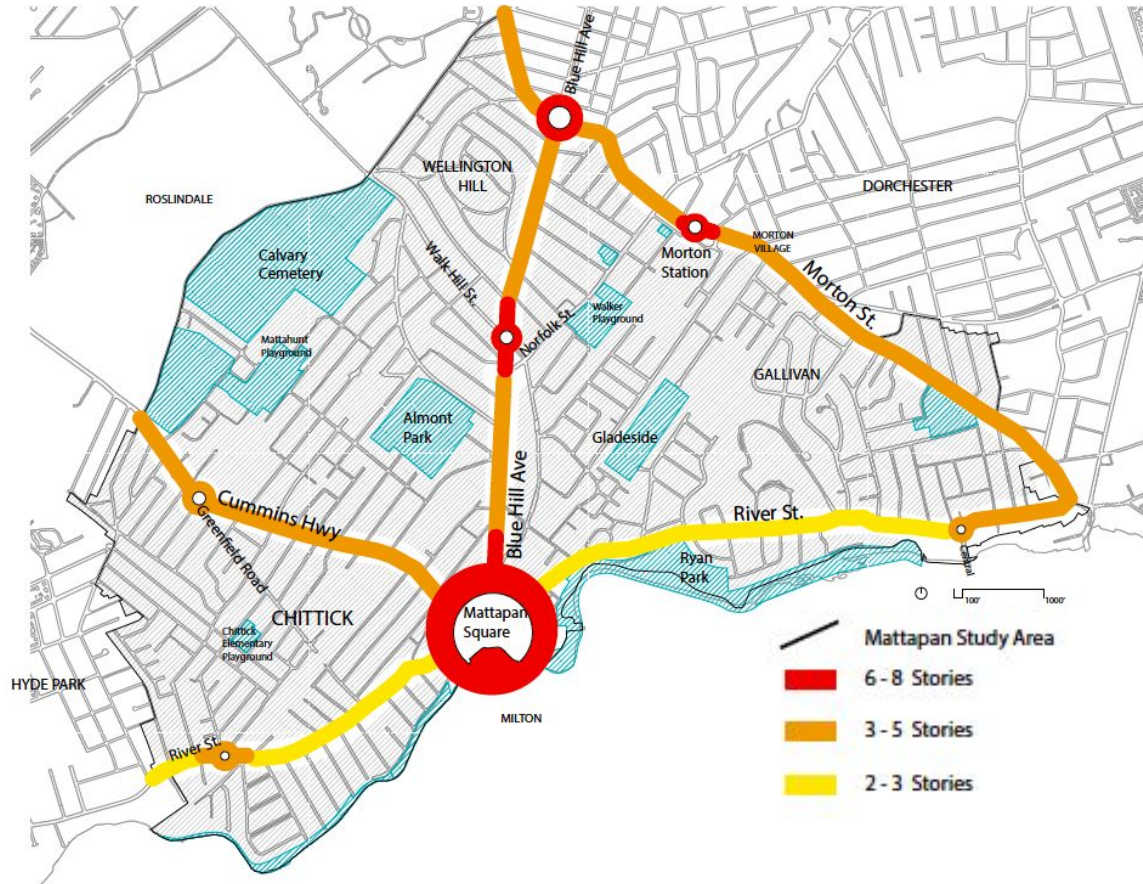
Amelyorasyon Mobilite

Blue Hill Ave ~125' (lajè)

Blue Hill Avenue tou pre Fairway St

Ki Kote Dansite a ta Dwe Tonbe nan Koridò a?

Dapre **sa nou te tande nan mwa fevriye a**, ekip k ap fè planifikasyon an panse ke senaryo ak dansite ki wo anpil la ta dwe konsantre nan zòn wouj yo, dansite mwayen an nan zòn oranj yo epi devlopman koridò ak dansite fèb nan zòn jòn yo.



Moun k ap dokimante gwoup ou a ap note refleksyon w yo la a:

Egzanp Dansite Wo: Morton Street, ki Egziste



Morton St tou pre Blue Hill Avenue

Egzanp Dansite Wo: Morton Street, Wotè Zonaj Ia



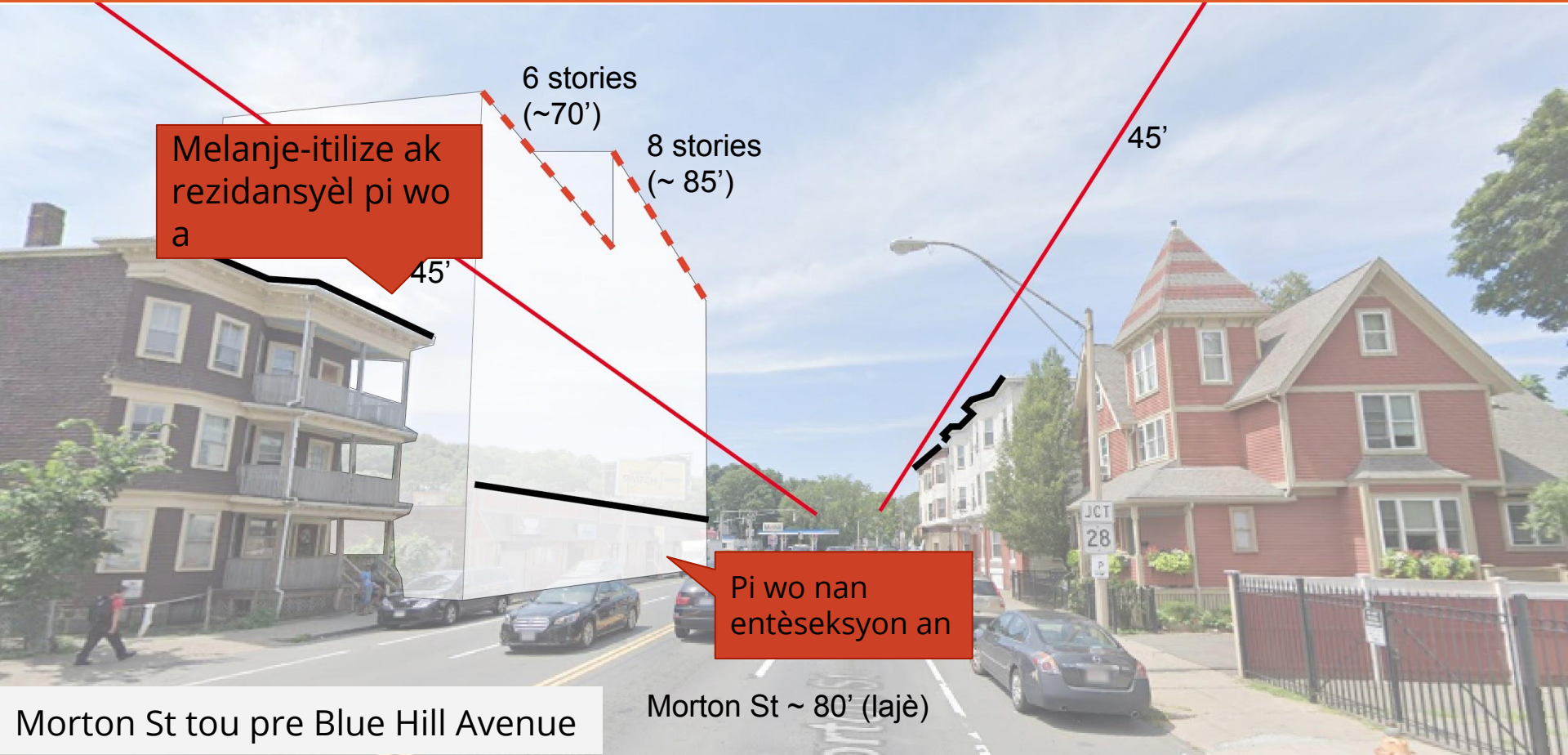
45'

45'

Morton St tou pre Blue Hill Avenue

Morton St ~ 80' (lajè)

Egzanp Dansite Wo: Morton Street, Pwopoze 6-8 istwa



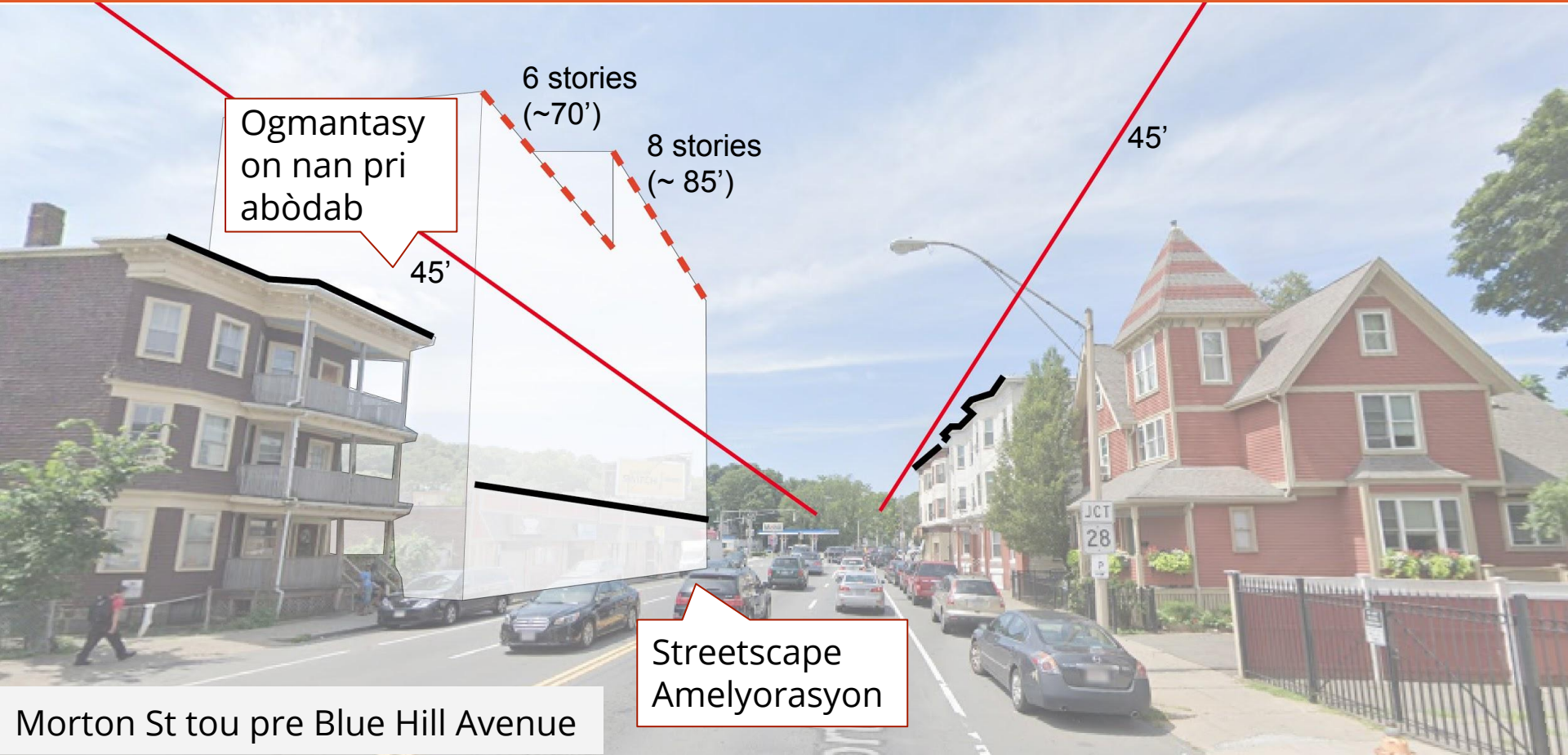
Melanje-italize ak rezidansyèl pi wo a

Pi wo nan entèsèksyon an

Morton St tou pre Blue Hill Avenue

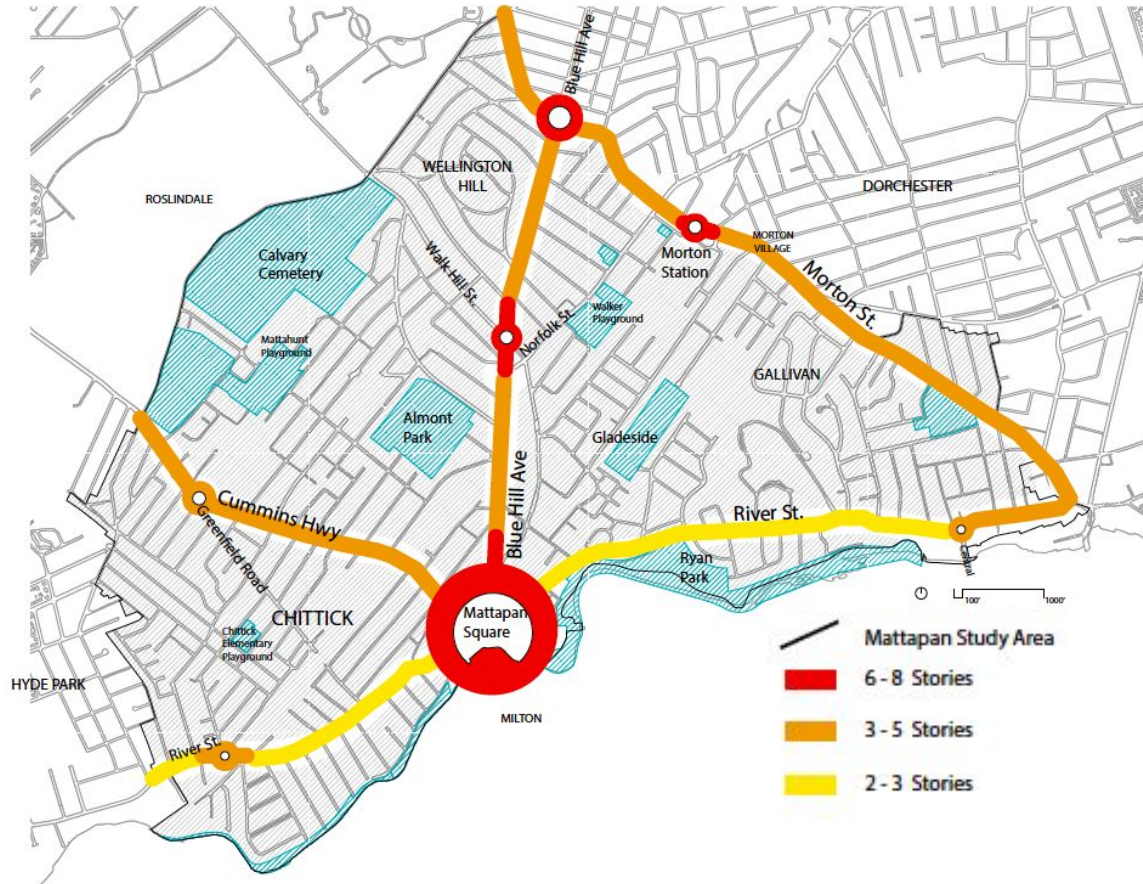
Morton St ~ 80\'' (lajè)

Egzanp Dansite Wo: Morton Street, Benefis



Ki Kote Dansite a ta Dwe Tonbe nan Koridò a?

Dapre **sa nou te tande nan mwa fevriye a**, ekip k ap fè planifikasyon an panse ke senaryo ak dansite ki wo anpil la ta dwe konsantre nan zòn wouj yo, dansite mwayen an nan zòn oranj yo epi devlopman koridò ak dansite fèb nan zòn jòn yo.



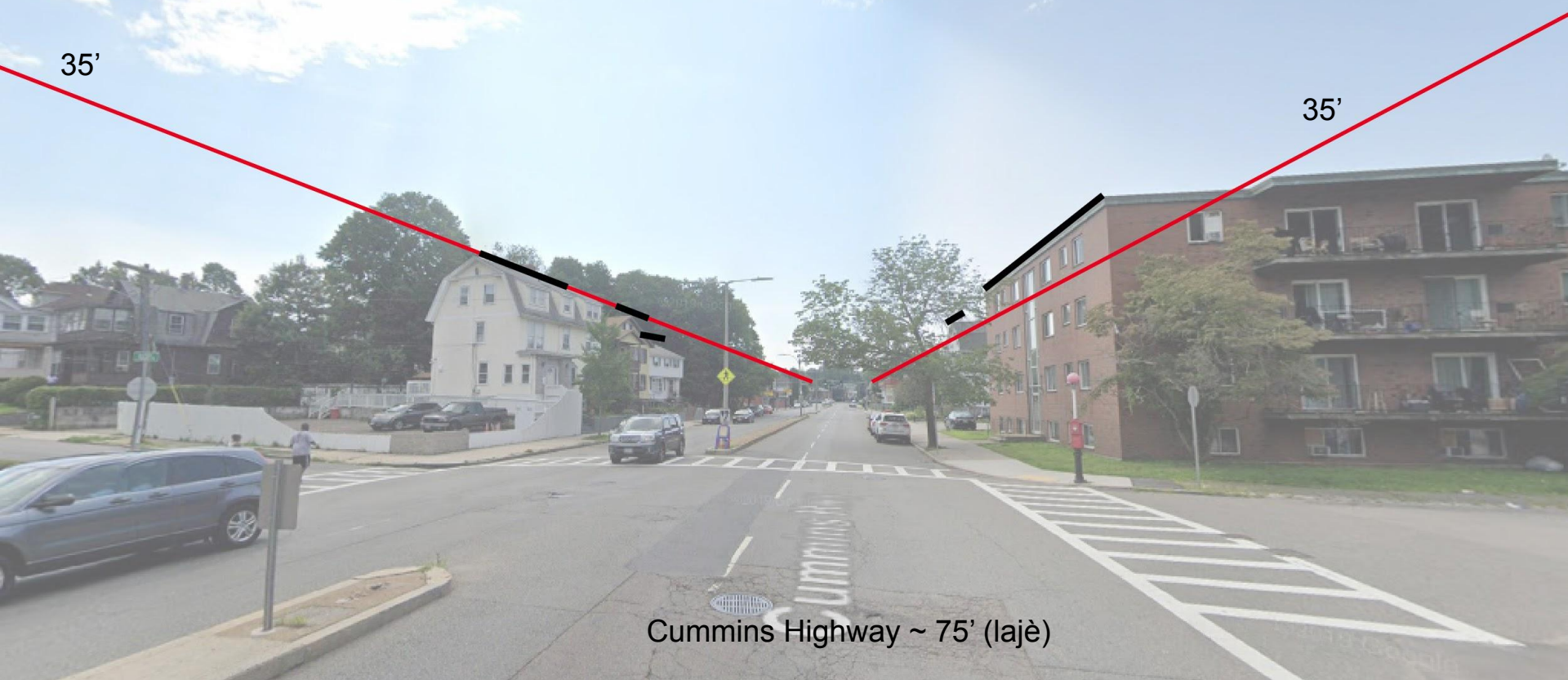
Moun k ap dokimante gwoup ou a ap note refleksyon w yo la a:

Egzanp Dansite Mwayen: Cummins Highway, ki Egziste



Cummins Highway tou pre Savannah Ave ak Rugby Rd.

Egzanp Dansite Mwayen: Cummins Highway, Wotè Zonaj la



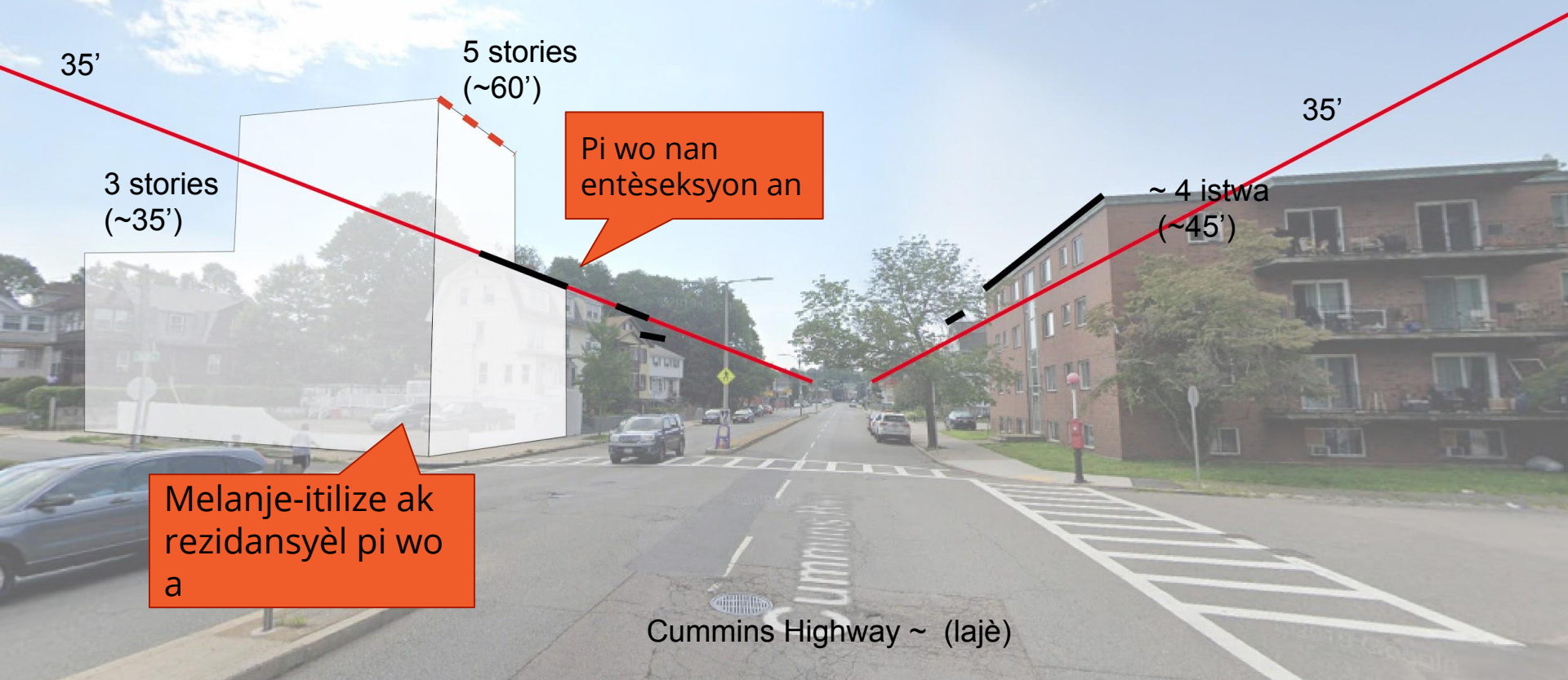
35'

35'

Cummins Highway ~ 75' (lajè)

Cummins Highway tou pre Savannah Ave ak Rugby Rd.

Egzanp Dansite Mwayen: Cummins Highway, Pwopoze 3-5 istwa



35'

5 stories (~60')

3 stories (~35')

Pi wo nan entèseksyon an

35'

~ 4 istwa (~45')

Melanje-italize ak rezidansyèl pi wo a

Cummins Highway ~ (lajè)

Cummins Highway tou pre Savannah Ave ak Rugby Rd.

Egzanp Dansite Mwayen: Cummins Highway, Benefis

Ogmantasyon nan pri abòdab

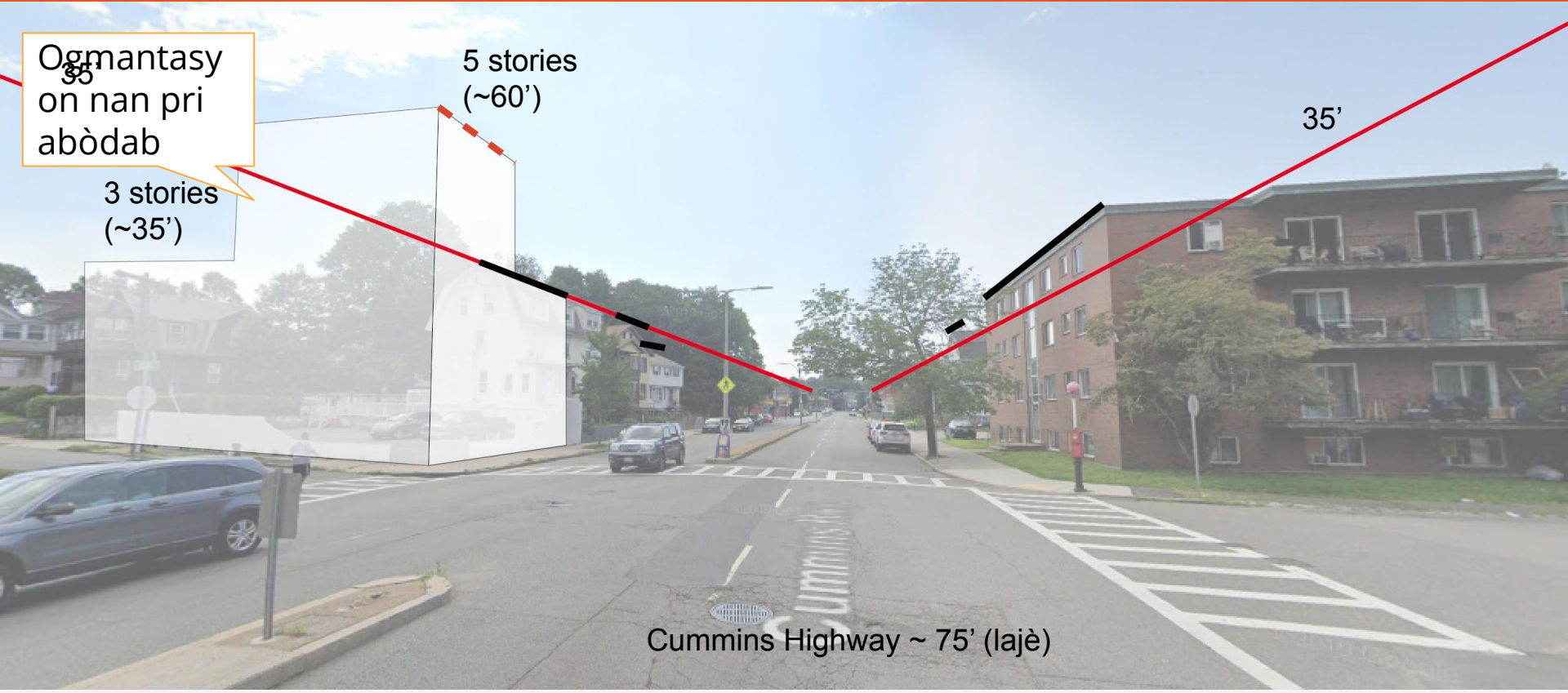
5 stories (~60')

3 stories (~35')

35'

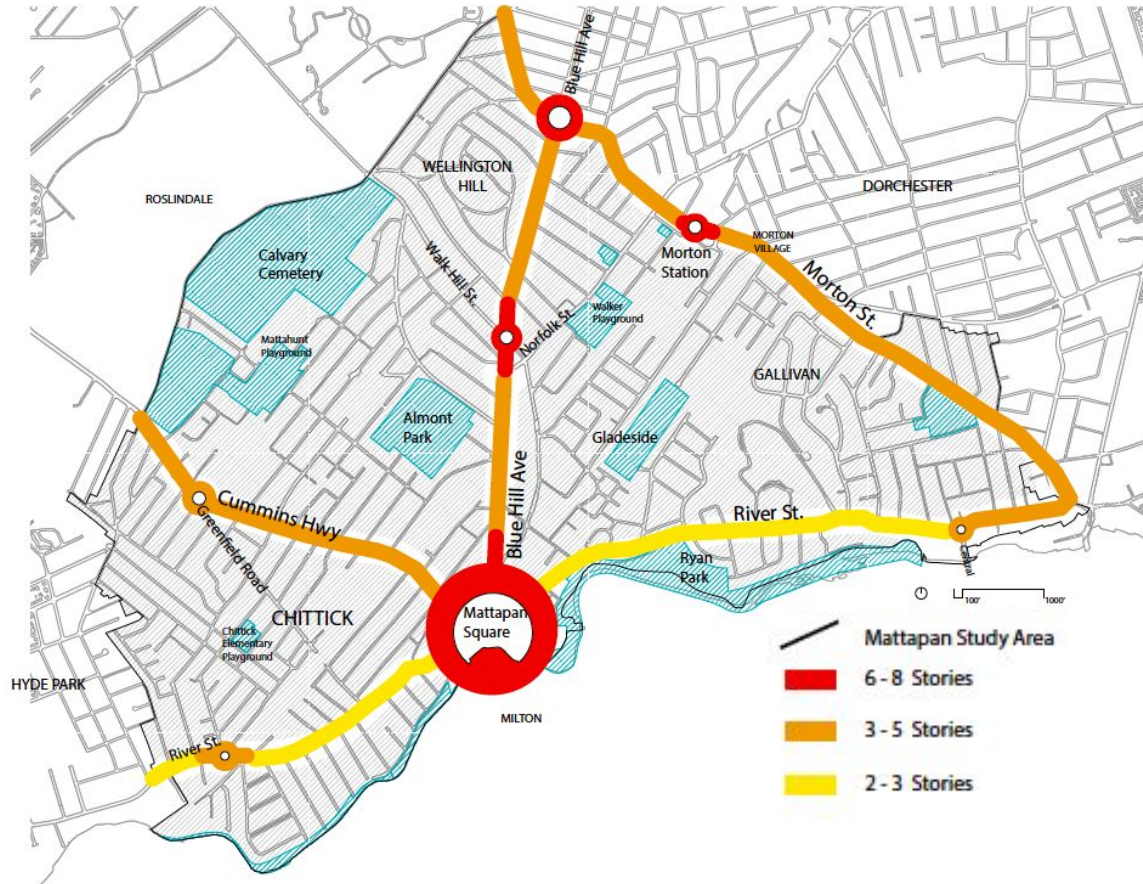
Cummins Highway ~ 75' (lajè)

Cummins Highway tou pre Savannah Ave ak Rugby Rd.



Ki Kote Dansite a ta Dwe Tonbe nan Koridò a?

Dapre **sa nou te tande nan mwa fevriye a**, ekip k ap fè planifikasyon an panse ke senaryo ak dansite ki wo anpil la ta dwe konsantre nan zòn wouj yo, dansite mwayen an nan zòn oranj yo epi devlopman koridò ak dansite fèb nan zòn jòn yo.



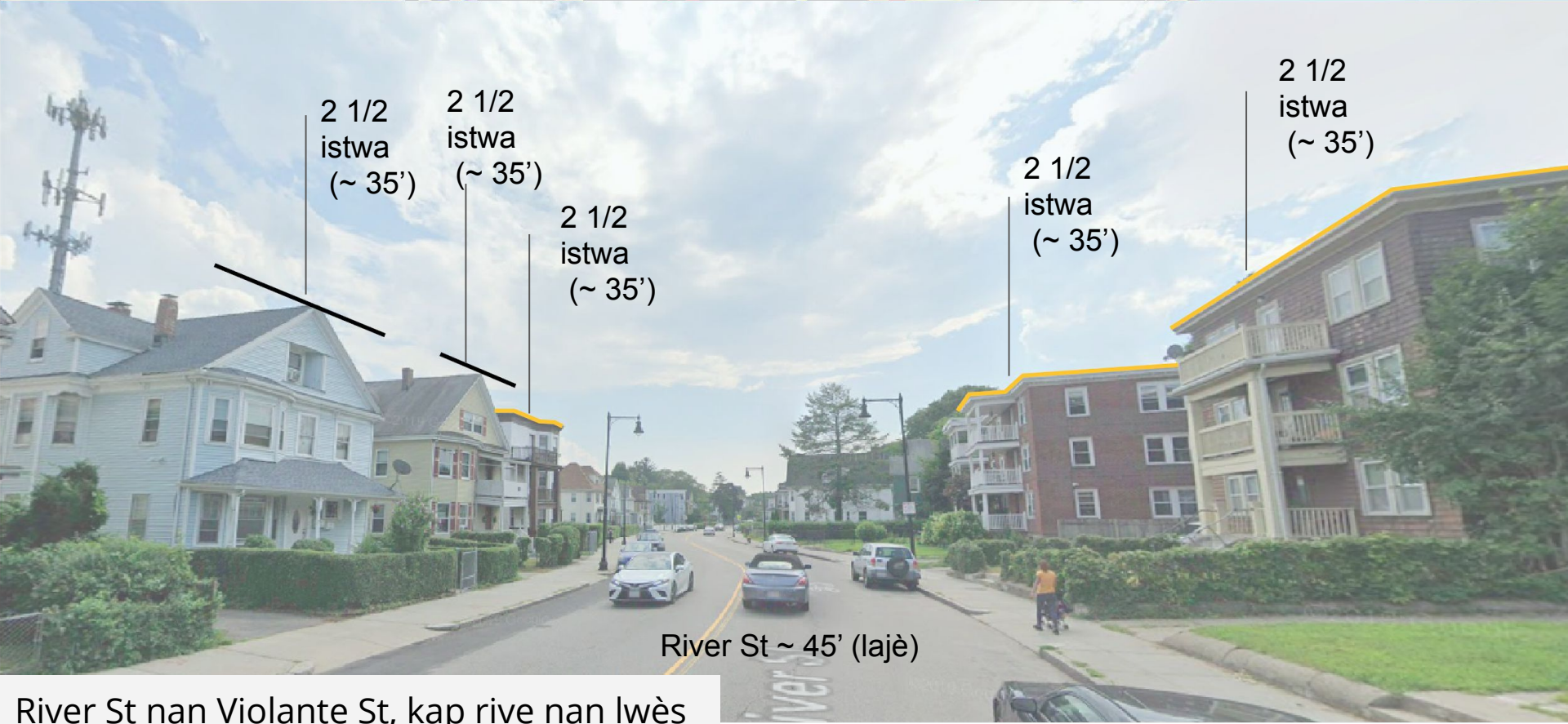
Moun k ap dokimante gwoup ou a ap note refleksyon w yo la a:

Egzanp Dansite Ba: River Street, ki Egziste



River St nan Violante St, kap rive nan lwès

Egzanp Dansite Ba: River Street, Wotè Zonaj la



River St nan Violante St, kap rive nan lwès

Ti chanjman nan rooflines

Gen anpil chans pou wè plis nan sa a style, tout rezidansyèl

River St ~ 45' (lajè)

River St nan Violante St, kap rive nan lwès

Ogmantasyon
nan inite
lojman

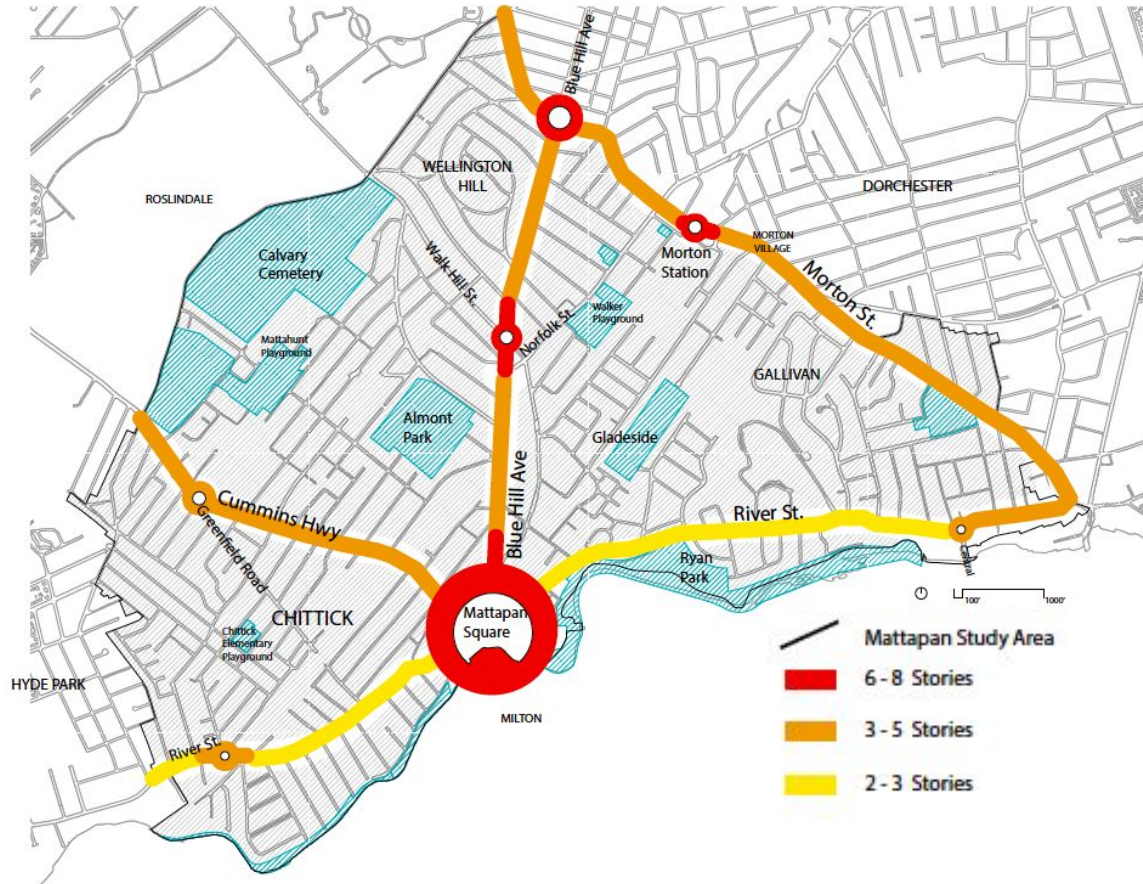


River St ~ 45' (lajè)

River St nan Violante St, kap rive nan Iwès

Ki Kote Dansite a ta Dwe Tonbe nan Koridò a?

Dapre **sa nou te tande nan mwa fevriye a**, ekip k ap fè planifikasyon an panse ke senaryo ak dansite ki wo anpil la ta dwe konsantre nan zòn wouj yo, dansite mwayen an nan zòn oranj yo epi devlopman koridò ak dansite fèb nan zòn jòn yo.



Moun k ap dokimante gwoup ou a ap note refleksyon w yo la a:

3 Diskisyon Gwo Gwoup ak Kloti





Sibvansyon pou Mattapan Teen Center

Tanporè atizay piblik / miray miray yo dwe pwodwi an kolaborasyon ak jèn, nan 10 Hazleton St.

2021 miray Spring

Lanse yon apèl pou atis nan sezon otòn la pou 2-3 gwo epitou travay ki pral gen ladan:

Komite Seleksyon Atis (5-7 manm)

Objektif pour selebre kilti Mattapan a, divèsite ak idantite

Kote yo dwe fini epi yo pral anonse nan Rele pou Atis

TRANSPORTATION ACTION PLAN & VISION UPDATE

For the past year, the Boston Transportation Department has been leading a community process to re-imagine the future of Blue Hill Avenue from Mattapan Square to Grove Hall. We received over 500 comments from the community on how to make the corridor safer, improve public space including public art, and developed bus and bike facilities. We want to continue the community conversation and give you an update on improvements planned for Spring 2021 and a longer-term vision for the corridor.

Meeting Details

- **September 30th @ 6:00 PM on Zoom**
- **Register Here: boston.gov/blue-hill-avenue**



Scan this QR Code with your phone's camera app to directly access the Registration Page

Questions? Contact matthew.moran@boston.gov
Boston Transportation Department



BRINGING BUSINESS BACK TO BLUE HILL AVENUE

30 vacant City-owned parcels on Blue Hill Avenue are the focus of redevelopment efforts.

Tell us what'd you like to see developed on the B1 parcels:

**Housing?
Open Space?**

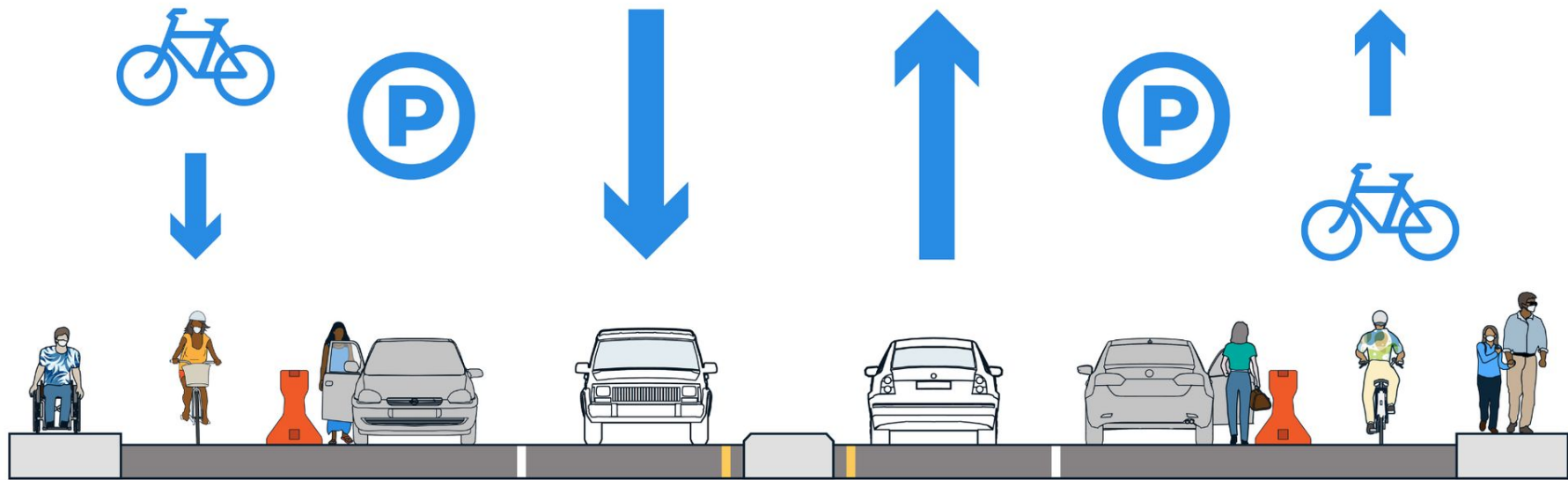
**Commercial Uses and Retail?
A Mixture of All Three?**

Scan the QR code and take a brief survey.

Find out more at: buildinghousing.boston.gov.

B1 survey





CUMMINS HIGHWAY

Starting around July 24th we are testing a calmer, safer traffic design. There will be one driving lane in each direction, turn lanes will remain.

PLANNING FOR FUTURE OPEN SPACE

The Parcel Priority Plan is a long-term planning effort. We're prioritizing parcels of land to acquire and protect for public use.

Survey in English

Sondaj an kreyòl ayisyen

Encuesta en español

Have questions? Contact:

PARKS AND RECREATION



MAGGIE.OWENS@BOSTON.GOV



617-961-3025
