

DISCLAIMER

The Boston Zoning Maps, printed, or downloaded from the Boston Planning and Development Agency (BPDA) website (bostonplans.org) may not reflect the most current Maps adopted by the Boston Zoning Commission. The print versions of the Maps as approved and signed by the Zoning Commission, available at the BPDA for download as a PDF, remain the official versions of the Maps. Thus, if discrepancies exist between the official print and Internet versions of these Maps, the official print version shall be considered correct. For further information regarding the official version of the Boston Zoning Code, including both the text and maps, please consult the BPDA.

Zoning Districts City of Boston
Map 8A
Greater Mattapan Neighborhood District
Boston Zoning Code

Adopted by the
 Zoning Commission of the City of Boston
 in meeting on February 19, 1997

Richard B. Kuler
 Chairman

Effective: February 27, 1997
 Date of public notice: January 16, 1997
 (See St. 1956, c. 665, s.5)

Draft

As amended
 Effective: March 3, 2008
 Public Notice: February 4, 2008



- Featured Districts Boundary
- Other District Boundary
- Subarea Boundary
- Planned Development Area (PDA) Designation
- Greenbelt Protection Overlay District
- Smart Growth Overlay District (See Article 87A)
- PDA Permitted

- Greater Mattapan Neighborhood District**
- 2F** Residential Subdistricts
 - Two-Family Residential Subdistrict
 - 3F** Three-Family Residential Subdistrict
 - MFR** Multifamily Residential Subdistrict
 - LC** Neighborhood Business Subdistricts
 - Local Convenience Subdistrict
 - CF** Community Facilities Subdistrict
 - EPS** Enterprise Protection Subdistrict
- For other provisions see Article 60.

- Boston Zoning Code**
- OS-CM** Open Space Subdistricts
 - Cemetery Open Space Subdistrict
 - OS-G** Community Garden Open Space Subdistrict
 - OS-P** Parkland Open Space Subdistrict
 - OS-RC** Recreation Open Space Subdistrict
 - OS-UW** Urban Wild Open Space Subdistrict
- See additional provisions in Article 33.



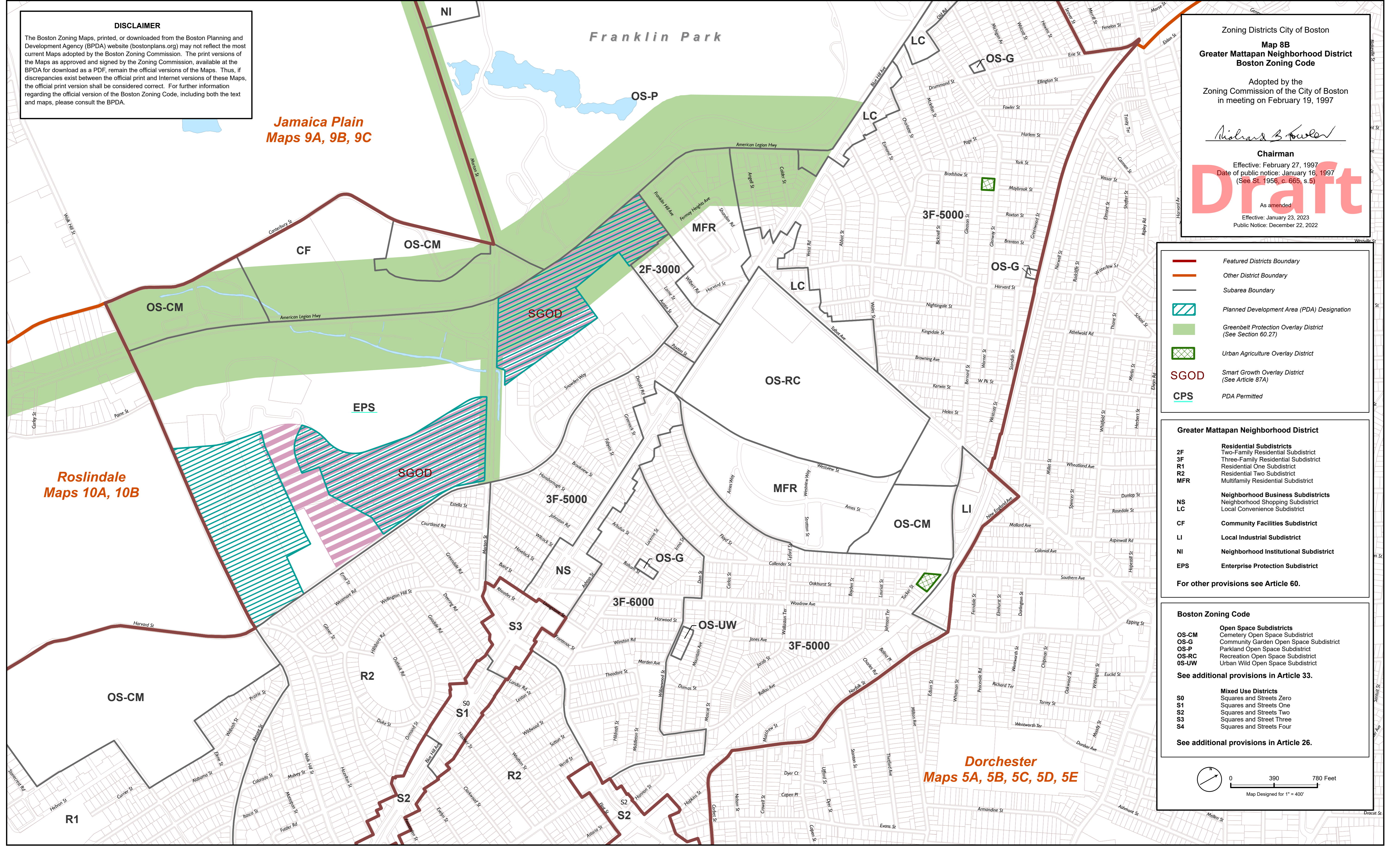
DISCLAIMER

The Boston Zoning Maps, printed, or downloaded from the Boston Planning and Development Agency (BPDA) website (bostonplans.org) may not reflect the most current Maps adopted by the Boston Zoning Commission. The print versions of the Maps as approved and signed by the Zoning Commission, available at the BPDA for download as a PDF, remain the official versions of the Maps. Thus, if discrepancies exist between the official print and Internet versions of these Maps, the official print version shall be considered correct. For further information regarding the official version of the Boston Zoning Code, including both the text and maps, please consult the BPDA.

**Jamaica Plain
Maps 9A, 9B, 9C**

**Roslindale
Maps 10A, 10B**

**Dorchester
Maps 5A, 5B, 5C, 5D, 5E**



Zoning Districts City of Boston

**Map 8B
Greater Mattapan Neighborhood District
Boston Zoning Code**

Adopted by the
Zoning Commission of the City of Boston
in meeting on February 19, 1997

Richard B. Fowler

Chairman

Effective: February 27, 1997
Date of public notice: January 16, 1997
(See St. 1956, c. 665, s.5)

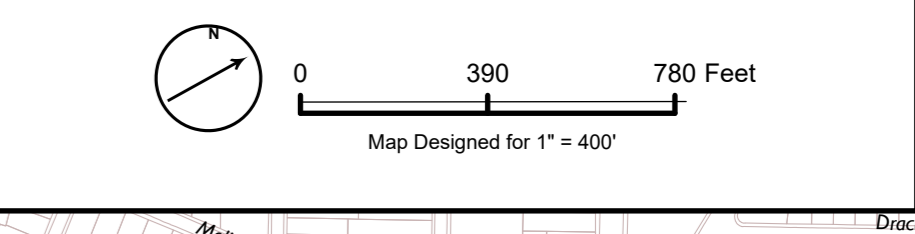
Draft

As amended
Effective: January 23, 2023
Public Notice: December 22, 2022

- Featured Districts Boundary
- Other District Boundary
- Subarea Boundary
- Planned Development Area (PDA) Designation
- Greenbelt Protection Overlay District (See Section 60.27)
- Urban Agriculture Overlay District
- SGOD Smart Growth Overlay District (See Article 87A)
- CPS PDA Permitted

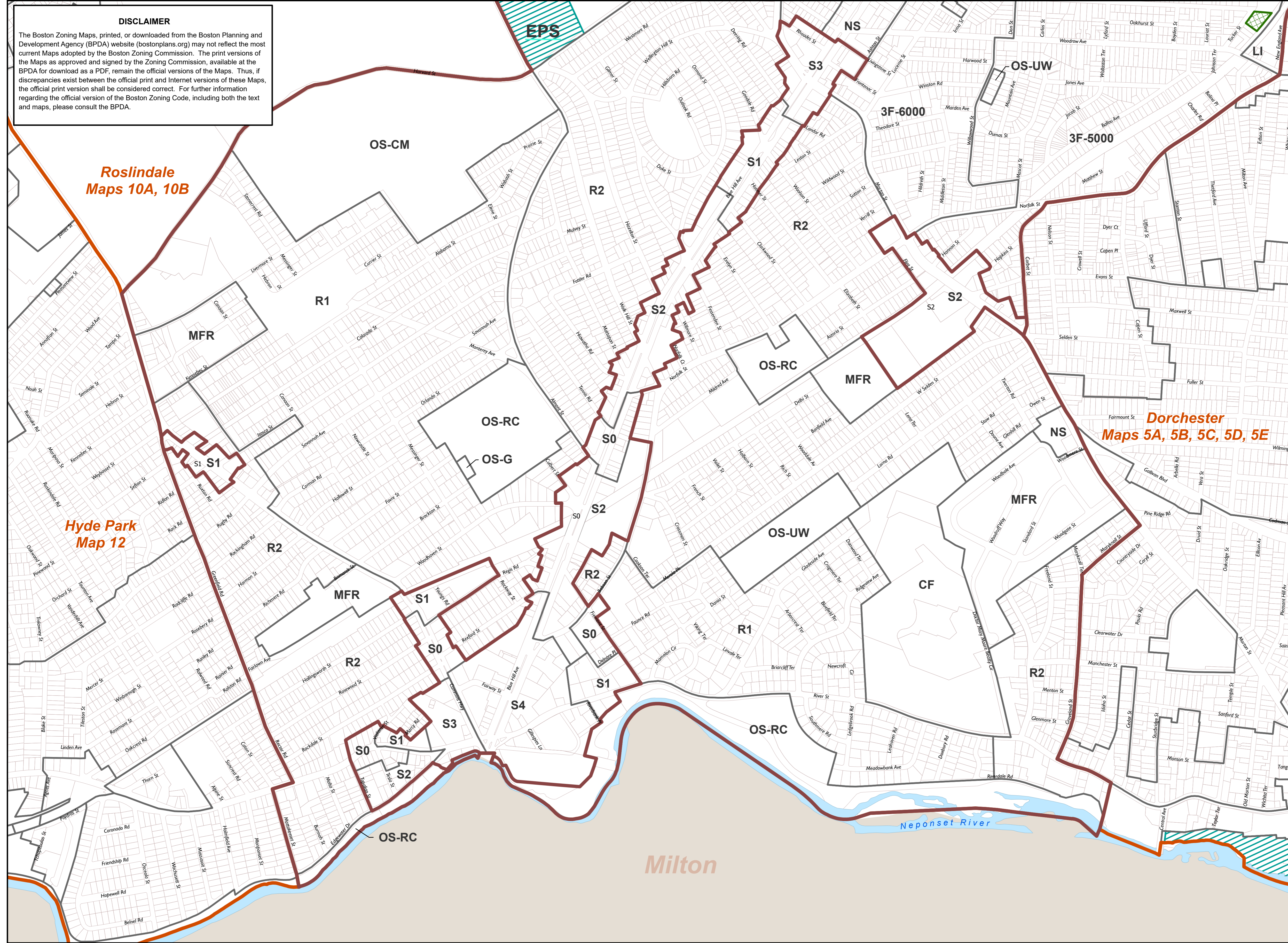
- Greater Mattapan Neighborhood District**
- Residential Subdistricts**
 - 2F Two-Family Residential Subdistrict
 - 3F Three-Family Residential Subdistrict
 - R1 Residential One Subdistrict
 - R2 Residential Two Subdistrict
 - MFR Multifamily Residential Subdistrict
 - Neighborhood Business Subdistricts**
 - NS Neighborhood Shopping Subdistrict
 - LC Local Convenience Subdistrict
 - Community Facilities Subdistrict**
 - CF Community Facilities Subdistrict
 - Local Industrial Subdistrict**
 - LI Local Industrial Subdistrict
 - Neighborhood Institutional Subdistrict**
 - NI Neighborhood Institutional Subdistrict
 - Enterprise Protection Subdistrict**
 - EPS Enterprise Protection Subdistrict
- For other provisions see Article 60.

- Boston Zoning Code**
- Open Space Subdistricts**
 - OS-CM Cemetery Open Space Subdistrict
 - OS-G Community Garden Open Space Subdistrict
 - OS-P Parkland Open Space Subdistrict
 - OS-RC Recreation Open Space Subdistrict
 - OS-UW Urban Wild Open Space Subdistrict
 - See additional provisions in Article 33.
 - Mixed Use Districts**
 - S0 Squares and Streets Zero
 - S1 Squares and Streets One
 - S2 Squares and Streets Two
 - S3 Squares and Street Three
 - S4 Squares and Streets Four
 - See additional provisions in Article 26.



DISCLAIMER
 The Boston Zoning Maps, printed, or downloaded from the Boston Planning and Development Agency (BPDA) website (bostonplans.org) may not reflect the most current Maps adopted by the Boston Zoning Commission. The print versions of the Maps as approved and signed by the Zoning Commission, available at the BPDA for download as a PDF, remain the official versions of the Maps. Thus, if discrepancies exist between the official print and Internet versions of these Maps, the official print version shall be considered correct. For further information regarding the official version of the Boston Zoning Code, including both the text and maps, please consult the BPDA.

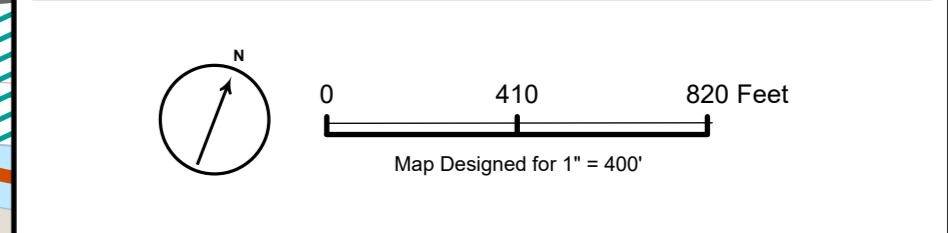
Zoning Districts City of Boston
Map 8C
Greater Mattapan Neighborhood District
Boston Zoning Code
 Adopted by the
 Zoning Commission of the City of Boston
 in meeting on February 19, 1997
Nicholas B. Koulas
Chairman
 Effective: February 27, 1997
 Date of public notice: January 16, 1997
 (See St. 1956, c. 665, s.5)
Draft
 As amended
 Effective: November 16, 2011
 Public Notice: October 27, 2011



- Featured Districts Boundary
- Other District Boundary
- Subarea Boundary
- Planned Development Area (PDA) Designation
- Greenbelt Protection Overlay District (See Section 60.27)
- Urban Agriculture Overlay District
- SGOD Smart Growth Overlay District (See Article 87A)
- CPS PDA Permitted

- Greater Mattapan Neighborhood District**
- Residential Subdistricts**
 - 2F Two-Family Residential Subdistrict
 - 3F Three-Family Residential Subdistrict
 - R1 Residential One Subdistrict
 - R2 Residential Two Subdistrict
 - MFR Multifamily Residential Subdistrict
 - Neighborhood Business Subdistricts**
 - NS Neighborhood Shopping Subdistrict
 - LC Local Convenience Subdistrict
 - Community Facilities Subdistrict**
 - CF Community Facilities Subdistrict
 - Local Industrial Subdistrict**
 - LI Local Industrial Subdistrict
 - Neighborhood Institutional Subdistrict**
 - NI Neighborhood Institutional Subdistrict
 - Enterprise Protection Subdistrict**
 - EPS Enterprise Protection Subdistrict
- For other provisions see Article 60.

- Boston Zoning Code**
- Open Space Subdistricts**
 - OS-CM Cemetery Open Space Subdistrict
 - OS-G Community Garden Open Space Subdistrict
 - OS-P Parkland Open Space Subdistrict
 - OS-RC Recreation Open Space Subdistrict
 - OS-UW Urban Wild Open Space Subdistrict
- See additional provisions in Article 33.
- Mixed Use Districts**
 - S0 Squares and Streets Zero
 - S1 Squares and Streets One
 - S2 Squares and Streets Two
 - S3 Squares and Street Three
 - S4 Squares and Streets Four
- See additional provisions in Article 26.



Roslindale
Maps 10A, 10B

Hyde Park
Map 12

Dorchester
Maps 5A, 5B, 5C, 5D, 5E