

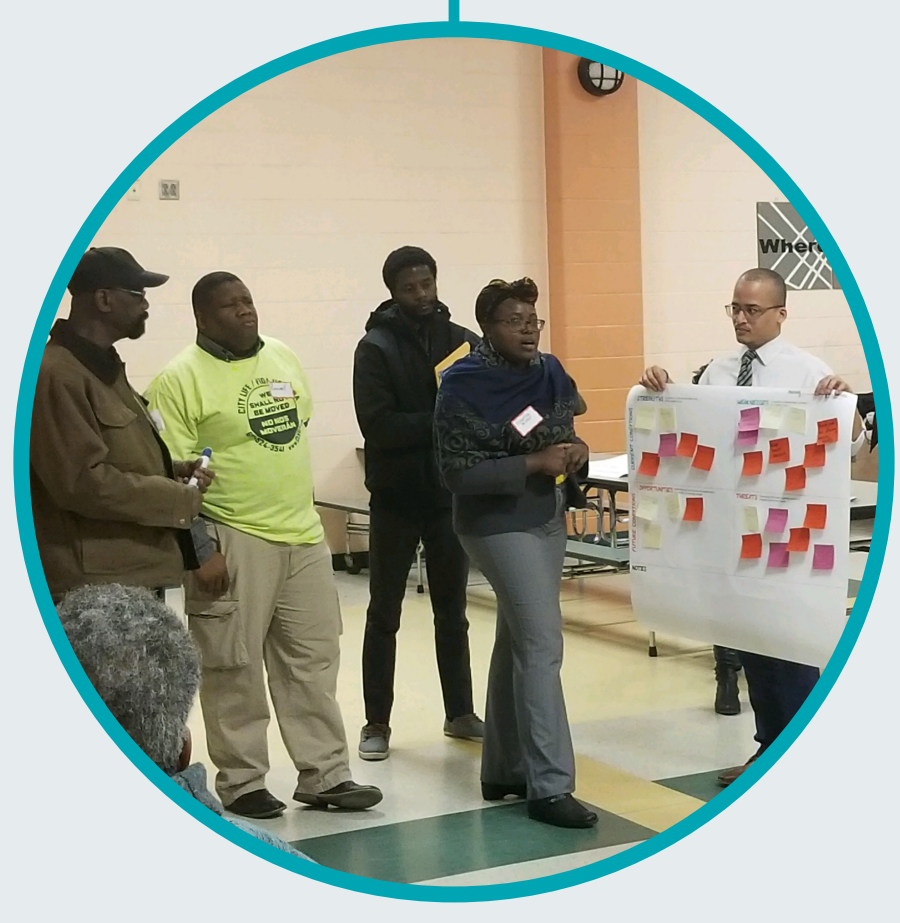
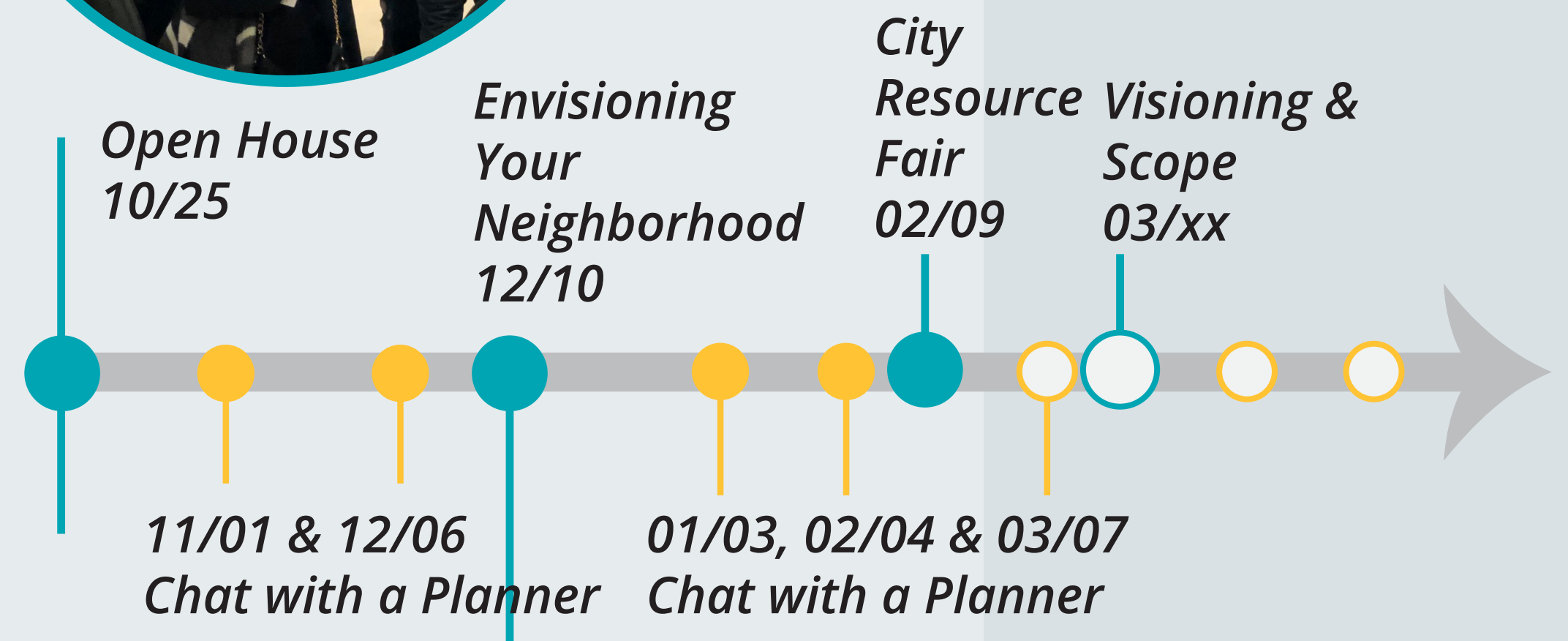
# PLAN: MATTAPAN

- WORKSHOPS
- COMMUNITY ENGAGEMENT EVENTS  
Chat with a Planner  
Pop-Ups and/or Events
- FUTURE WORKSHOPS
- FUTURE COMMUNITY ENGAGEMENT EVENTS

TELL US HOW YOU WANT TO BE ENGAGED

## WHAT WE HAVE DONE

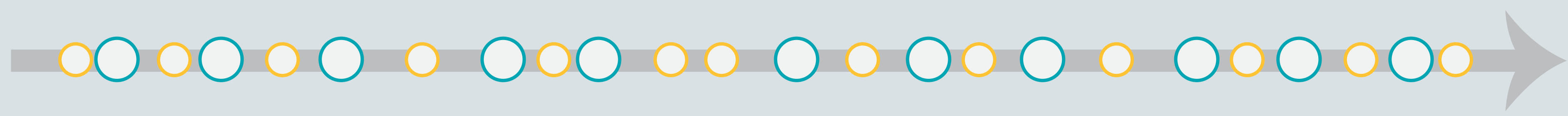
2018 2019



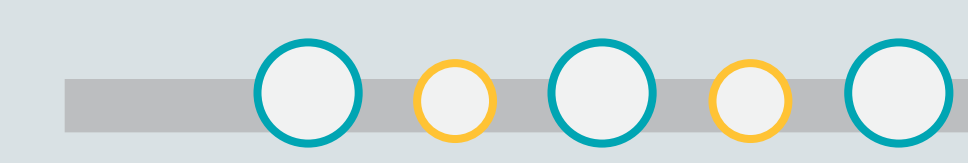
**Pre-Planning Workshops:**  
Open House, Visioning  
Goal Setting, PLAN Scope

## FUTURE PROCESS

2020

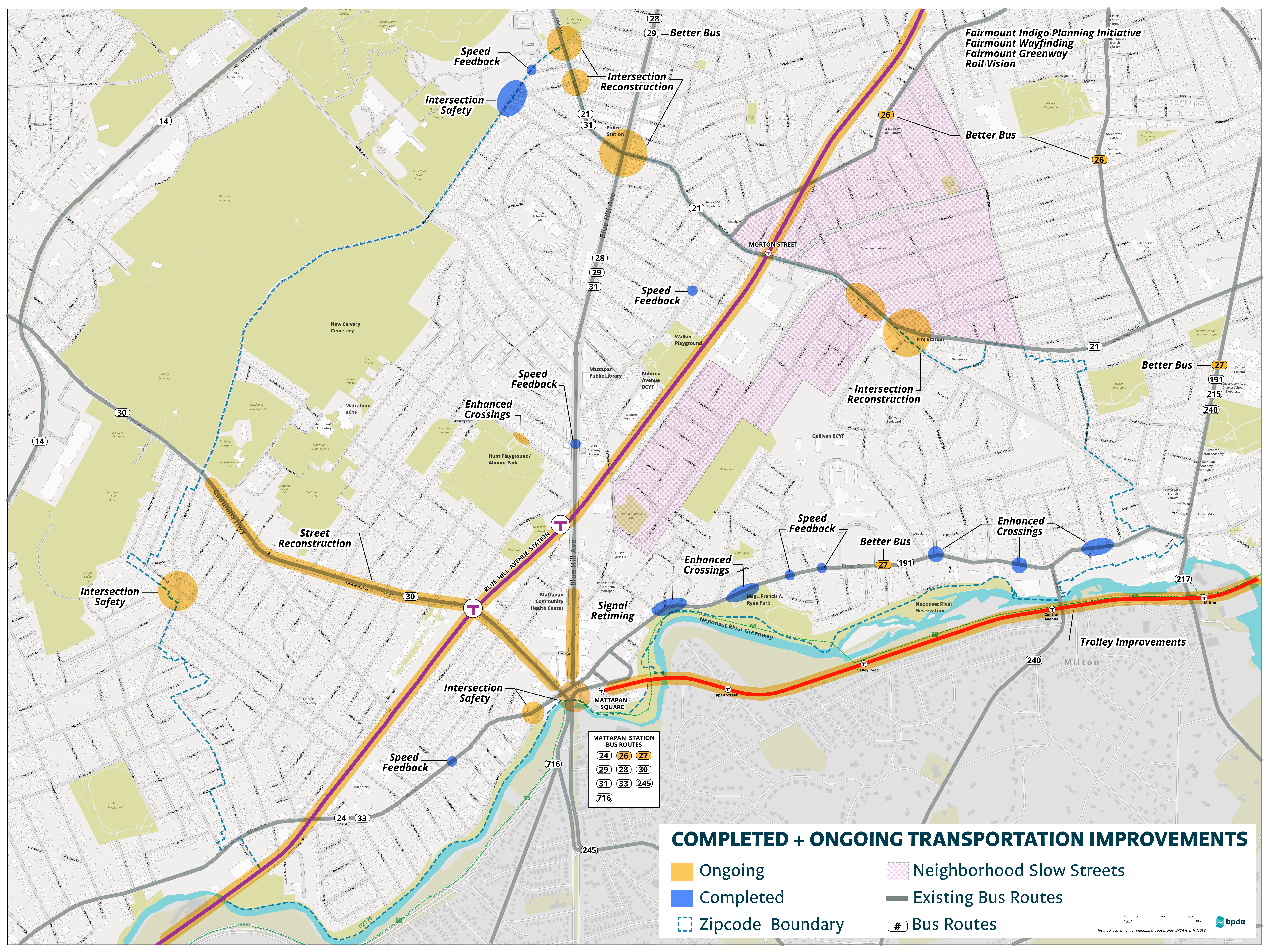


**Planning Workshop Topics:**  
Workforce development, Transportation & Mobility  
Housing, Jobs and Businesses, Neighborhood Identity  
Arts + Culture, Open Space & Climate  
City and Neighborhood Resource Fairs



**Drafting Plan Recommendations**  
**Reviewing PLAN: Mattapan Drafts**  
**Strategizing implementation**





Fairmount Indigo Planning Initiative  
 Fairmount Wayfinding  
 Fairmount Greenway  
 Rail Vision

**MATTAPAN STATION  
 BUS ROUTES**

24	26	27
29	28	30
31	33	245
716		

**COMPLETED + ONGOING TRANSPORTATION IMPROVEMENTS**

- Ongoing
- Completed
- Zipcode Boundary
- Neighborhood Slow Streets
- Existing Bus Routes
- # Bus Routes



# PLAN: Mattapan

Preserve. Enhance. Grow.

## Transportation Project Descriptions

### City of Boston Projects:

City of Boston transportation projects advance Go Boston 2030 goals of expanding access, improving safety, and ensuring reliability for all travel modes. In addition to the City's capital planning, initiatives like Vision Zero Boston and Neighborhood Slow Streets help identify and advance transportation projects.



#### Speed Feedback Signs

Boston Transportation Department installs signs that show vehicle speeds in real time, encouraging drivers to follow the 25 mile-per-hour citywide speed limit.

**Completed:** Harvard Street/Estella Street, 487 Norfolk Street, 1436 Blue Hill Avenue, and three on River Street



#### Enhanced Crossings

Boston Transportation Department installs new crosswalks at intersections or destinations between intersections. Using pavement markings and flex posts, existing crossings may be enhanced by making pedestrians more visible and providing crossing islands.

**Completed:** Almont Street/Hunt Playground, River Street/Freemont Street, River Street/Ryan Playground, River Street/Standard Street, River Street/Cedar Street, River Street/Temple Street, and River Street/Old Morton Street



#### Safer Intersections

Boston Transportation Department and Public Works Department use pavement markings and flex posts to narrow intersections that reduce vehicle speeds and make it safer to cross. Traffic signals can be re-timed to reduce conflicts between people walking and driving.

**Completed:** Wood Avenue/Roanoke Road/Mariposa Street, River Street/Edgewater Drive  
**In Progress:** Harvard Street/Courtland Road/Deering Road, Blue Hill Avenue/River Street/Cummins Highway, Blue Hill Avenue/Fairway Street, and Blue Hill Avenue/Babson Street



#### Street and Intersection Reconstruction

Boston Public Works Department redesigns streets and intersections to calm traffic and improve safety, access, and reliability for everyone. Reconstructed streets and intersections include new pavement, sidewalks, bus stops, lighting, and landscaping.

**In Progress Intersections:** River Street/Edgewater Drive

**In Progress Streets:** Cummins Highway from River Street to Harvard Street/Wood Avenue



#### Fairmount Greenway

The Fairmount Greenway Task Force (FGTF) is planning a nine-mile walking and biking route that would link the Fairmount stations, open space, and other amenities along the Fairmount Line. Implementation of the Fairmount Greenway would be a collaboration between the FGTF, City, MassDOT, MBTA, and the Department of Conservation and Recreation.



#### Neighborhood Slow Streets

Neighborhood Slow Streets zones in or adjacent to the PLAN: Mattapan study area include West Seldon Street and Vicinity, Redefine our Community, and Dorchester Unified Neighborhood West.

### Other Projects:

#### Street and Intersection Reconstruction

MassDOT redesigns state-owned streets to address safety issues, ensure accessibility, and, where feasible, prioritize walking, biking, and taking transit. Please direct project inquiries to [dot.feedback.highway@state.ma.us](mailto:dot.feedback.highway@state.ma.us) and reference the specific project number.

#### Better Bus Project

MBTA is proposing service changes for bus routes 26 and 27 as well as routes throughout the region. Proposed service changes in Mattapan are intended to provide better connections and buses to arrive on time and more often.

#### Blue Hill Avenue Station

MBTA is constructing a new station on the Fairmount Line with entrances on Blue Hill Avenue and Cummins Highway. The Blue Hill Avenue Station is expected to open for service this month. For inquiries, please contact Desiree Patrice at [dpatrice@mbta.com](mailto:dpatrice@mbta.com) or 617-322-9637.

#### Mattapan High-Speed Line Transformation Program

MBTA is assessing the existing service needs, state of good repair needs, and future fleet options for the Mattapan High-Speed Line. The MBTA is preparing a community survey and will hold three community meetings in early 2019 (schedule to be determined).

#### Rail Vision

MBTA is identifying cost-effective strategies to transform the existing commuter rail system. All proposals being evaluated by the MBTA include improvements to the Fairmount Line. Information can be found at <https://www.mbta.com/projects/rail-vision>. The MBTA will host an open house community meeting in late February.





OASIS on Ballou



Roberts Playground



Thetford/Evans Playground



Odom Serenity Garden



Astoria Quarter Acre Farm



Fowler Clark Epstein Farm



Almont Park



Walker Playground

Chittick Elementary Playground



Ross Playground



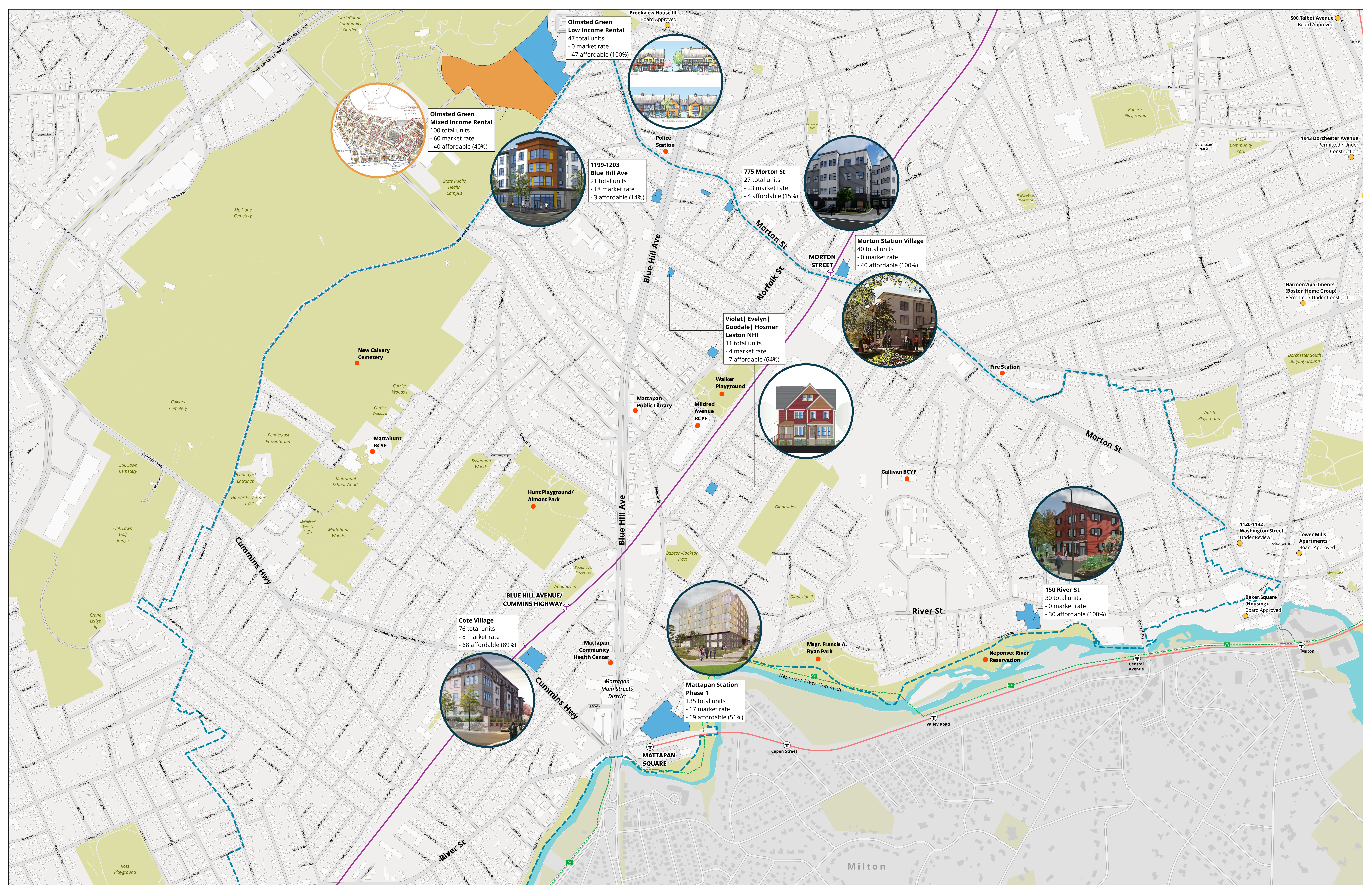
Neponset River



# OPEN SPACE IMPROVEMENTS

- Recent Improvements
- Designs In-Progress
- Future Improvements
- Zip Code Boundary
- Neighborhood Assets





**Olmsted Green Low Income Rental**  
 47 total units  
 - 0 market rate  
 - 47 affordable (100%)

**Olmsted Green Mixed Income Rental**  
 100 total units  
 - 60 market rate  
 - 40 affordable (40%)

**1199-1203 Blue Hill Ave**  
 21 total units  
 - 18 market rate  
 - 3 affordable (14%)

**775 Morton St**  
 27 total units  
 - 23 market rate  
 - 4 affordable (15%)

**Morton Station Village**  
 40 total units  
 - 0 market rate  
 - 40 affordable (100%)

**Violet | Evelyn | Goodale | Hosmer | Leston NHI**  
 11 total units  
 - 4 market rate  
 - 7 affordable (64%)

**150 River St**  
 30 total units  
 - 0 market rate  
 - 30 affordable (100%)

**Cote Village**  
 76 total units  
 - 8 market rate  
 - 68 affordable (89%)

**Mattapan Station Phase 1**  
 135 total units  
 - 67 market rate  
 - 69 affordable (51%)

# COMPLETED + PROPOSED DEVELOPMENTS

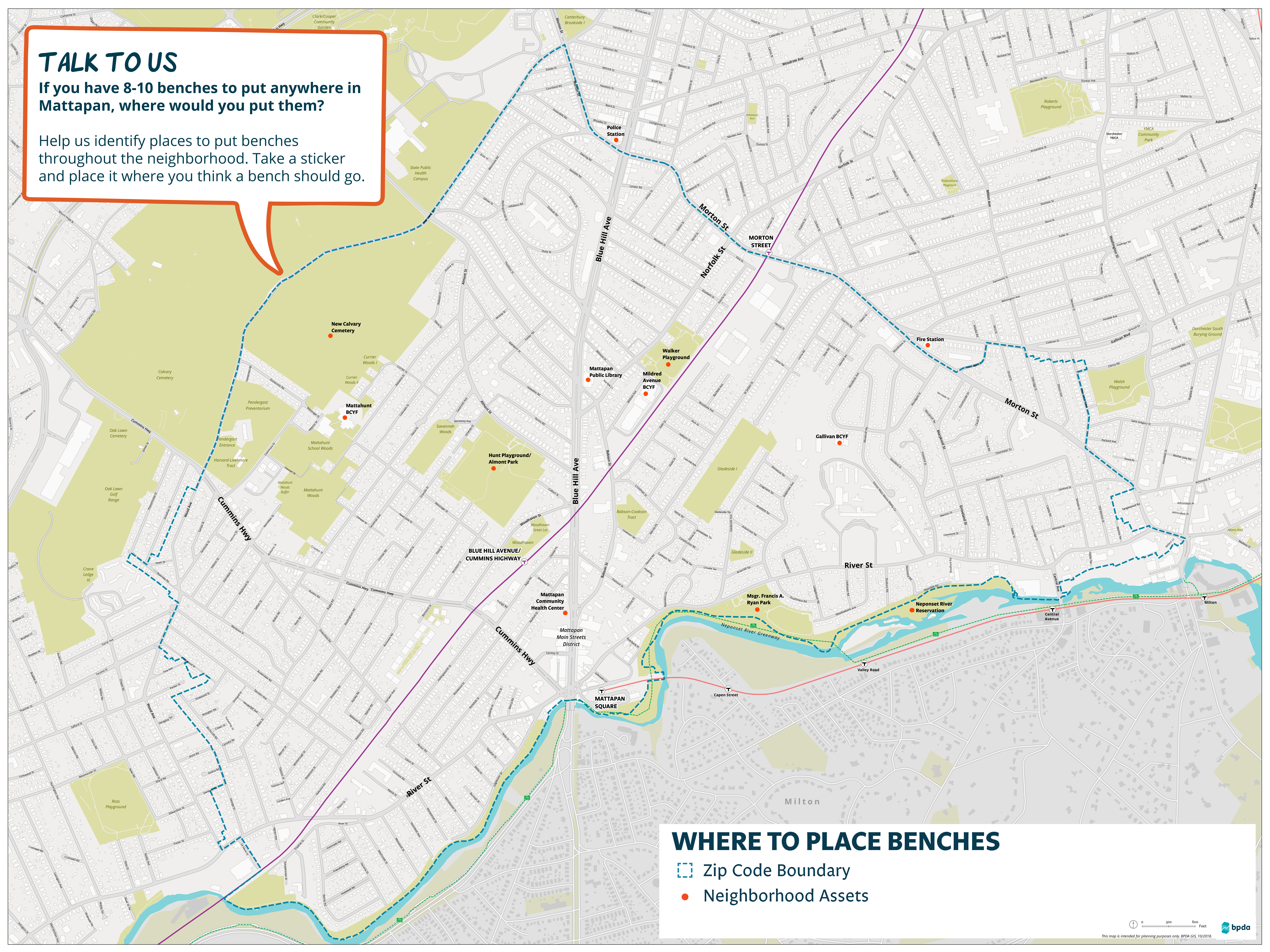
- Completed
- Proposed
- Zip Code Boundary
- Neighborhood Assets
- Developments Outside Study Area



# TALK TO US

If you have 8-10 benches to put anywhere in Mattapan, where would you put them?

Help us identify places to put benches throughout the neighborhood. Take a sticker and place it where you think a bench should go.



## WHERE TO PLACE BENCHES

- Zip Code Boundary
- Neighborhood Assets