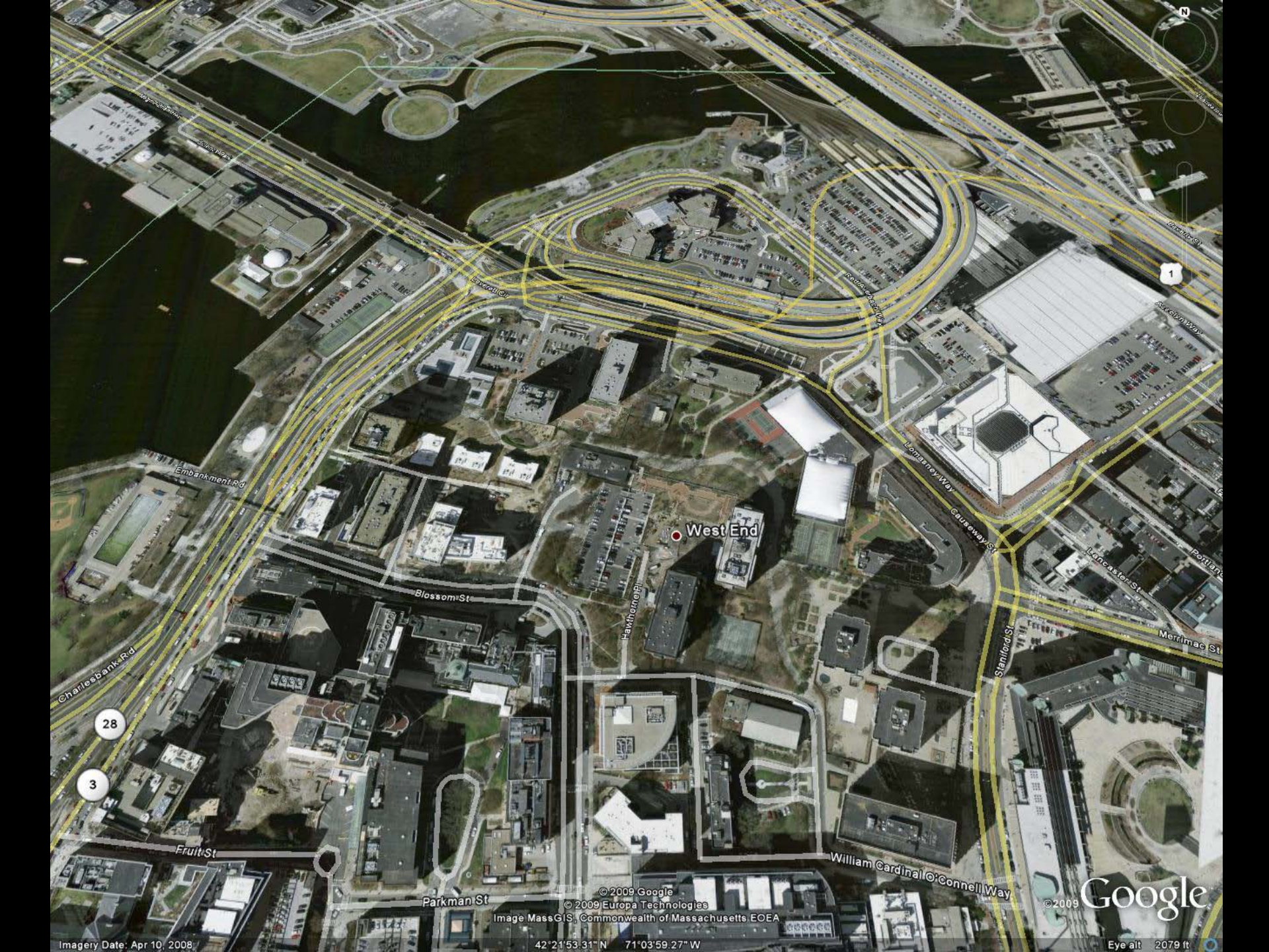


A photograph of a paved path in a park-like setting. The path is wide and paved, leading through a dense canopy of green trees. In the background, a multi-story building with windows is visible. The scene is bright and sunny, with dappled shadows on the path. The text "thoreau path" is overlaid in the center in a light blue, lowercase, sans-serif font.

thoreau path

Two people are sitting on a bench on the right side of the path, looking towards the left. One person is wearing a light blue shirt and blue jeans, and the other is wearing a white shirt and blue jeans. They appear to be engaged in conversation or looking at something together.



West End

28

3

Imagery Date: Apr 10, 2008

© 2009 Google
© 2009 Europa Technologies
Image MassGIS, Commonwealth of Massachusetts EOE

42°21'53.31" N 71°03'59.27" W

© 2009 Google

Eye alt 2079 ft



LEGEND

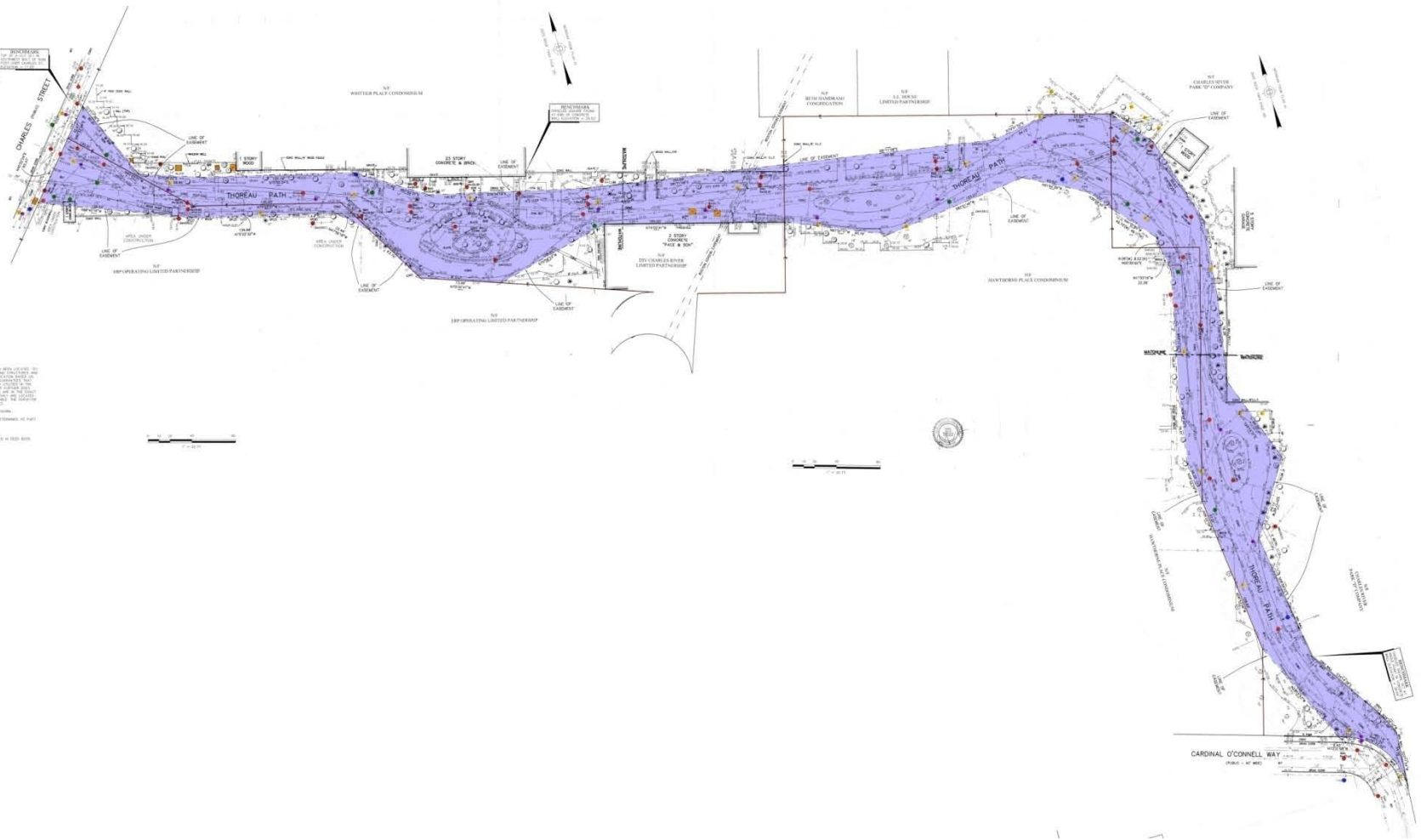
- 1.000' Contour
- 2.000' Contour
- 3.000' Contour
- 4.000' Contour
- 5.000' Contour
- 6.000' Contour
- 7.000' Contour
- 8.000' Contour
- 9.000' Contour
- 10.000' Contour
- 11.000' Contour
- 12.000' Contour
- 13.000' Contour
- 14.000' Contour
- 15.000' Contour
- 16.000' Contour
- 17.000' Contour
- 18.000' Contour
- 19.000' Contour
- 20.000' Contour
- 21.000' Contour
- 22.000' Contour
- 23.000' Contour
- 24.000' Contour
- 25.000' Contour
- 26.000' Contour
- 27.000' Contour
- 28.000' Contour
- 29.000' Contour
- 30.000' Contour
- 31.000' Contour
- 32.000' Contour
- 33.000' Contour
- 34.000' Contour
- 35.000' Contour
- 36.000' Contour
- 37.000' Contour
- 38.000' Contour
- 39.000' Contour
- 40.000' Contour
- 41.000' Contour
- 42.000' Contour
- 43.000' Contour
- 44.000' Contour
- 45.000' Contour
- 46.000' Contour
- 47.000' Contour
- 48.000' Contour
- 49.000' Contour
- 50.000' Contour
- 51.000' Contour
- 52.000' Contour
- 53.000' Contour
- 54.000' Contour
- 55.000' Contour
- 56.000' Contour
- 57.000' Contour
- 58.000' Contour
- 59.000' Contour
- 60.000' Contour
- 61.000' Contour
- 62.000' Contour
- 63.000' Contour
- 64.000' Contour
- 65.000' Contour
- 66.000' Contour
- 67.000' Contour
- 68.000' Contour
- 69.000' Contour
- 70.000' Contour
- 71.000' Contour
- 72.000' Contour
- 73.000' Contour
- 74.000' Contour
- 75.000' Contour
- 76.000' Contour
- 77.000' Contour
- 78.000' Contour
- 79.000' Contour
- 80.000' Contour
- 81.000' Contour
- 82.000' Contour
- 83.000' Contour
- 84.000' Contour
- 85.000' Contour
- 86.000' Contour
- 87.000' Contour
- 88.000' Contour
- 89.000' Contour
- 90.000' Contour
- 91.000' Contour
- 92.000' Contour
- 93.000' Contour
- 94.000' Contour
- 95.000' Contour
- 96.000' Contour
- 97.000' Contour
- 98.000' Contour
- 99.000' Contour
- 100.000' Contour

ABBREVIATIONS

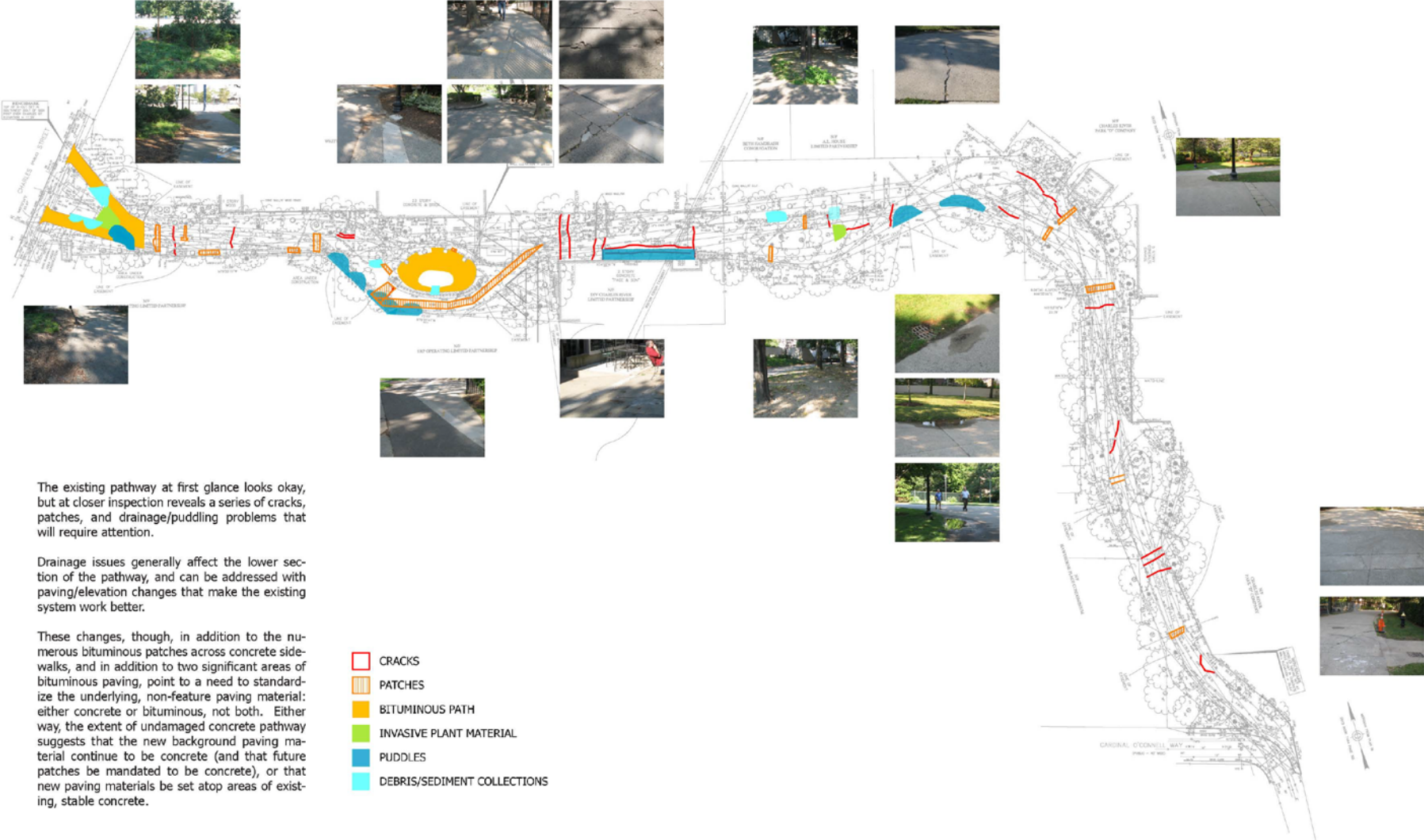
- 1.000' Contour
- 2.000' Contour
- 3.000' Contour
- 4.000' Contour
- 5.000' Contour
- 6.000' Contour
- 7.000' Contour
- 8.000' Contour
- 9.000' Contour
- 10.000' Contour
- 11.000' Contour
- 12.000' Contour
- 13.000' Contour
- 14.000' Contour
- 15.000' Contour
- 16.000' Contour
- 17.000' Contour
- 18.000' Contour
- 19.000' Contour
- 20.000' Contour
- 21.000' Contour
- 22.000' Contour
- 23.000' Contour
- 24.000' Contour
- 25.000' Contour
- 26.000' Contour
- 27.000' Contour
- 28.000' Contour
- 29.000' Contour
- 30.000' Contour
- 31.000' Contour
- 32.000' Contour
- 33.000' Contour
- 34.000' Contour
- 35.000' Contour
- 36.000' Contour
- 37.000' Contour
- 38.000' Contour
- 39.000' Contour
- 40.000' Contour
- 41.000' Contour
- 42.000' Contour
- 43.000' Contour
- 44.000' Contour
- 45.000' Contour
- 46.000' Contour
- 47.000' Contour
- 48.000' Contour
- 49.000' Contour
- 50.000' Contour
- 51.000' Contour
- 52.000' Contour
- 53.000' Contour
- 54.000' Contour
- 55.000' Contour
- 56.000' Contour
- 57.000' Contour
- 58.000' Contour
- 59.000' Contour
- 60.000' Contour
- 61.000' Contour
- 62.000' Contour
- 63.000' Contour
- 64.000' Contour
- 65.000' Contour
- 66.000' Contour
- 67.000' Contour
- 68.000' Contour
- 69.000' Contour
- 70.000' Contour
- 71.000' Contour
- 72.000' Contour
- 73.000' Contour
- 74.000' Contour
- 75.000' Contour
- 76.000' Contour
- 77.000' Contour
- 78.000' Contour
- 79.000' Contour
- 80.000' Contour
- 81.000' Contour
- 82.000' Contour
- 83.000' Contour
- 84.000' Contour
- 85.000' Contour
- 86.000' Contour
- 87.000' Contour
- 88.000' Contour
- 89.000' Contour
- 90.000' Contour
- 91.000' Contour
- 92.000' Contour
- 93.000' Contour
- 94.000' Contour
- 95.000' Contour
- 96.000' Contour
- 97.000' Contour
- 98.000' Contour
- 99.000' Contour
- 100.000' Contour

NOTES

- 1. THIS PLAN IS A PRELIMINARY PLAN AND IS SUBJECT TO CHANGE WITHOUT NOTICE.
- 2. THE PROPERTY LINES SHOWN ON THIS PLAN ARE BASED ON THE RECORD PLANS AND SURVEY DATA PROVIDED BY THE CLIENT.
- 3. THE ELEVATIONS SHOWN ON THIS PLAN ARE BASED ON THE DATUM OF MEANS SEA LEVEL.
- 4. THE DISTANCES SHOWN ON THIS PLAN ARE BASED ON THE HORIZONTAL DISTANCES.
- 5. THE AREA SHOWN ON THIS PLAN IS APPROXIMATELY 100 ACRES.
- 6. THE PLAN IS NOT TO BE USED FOR CONSTRUCTION WITHOUT THE APPROVAL OF THE ENGINEER.
- 7. THE PLAN IS NOT TO BE USED FOR ANY OTHER PURPOSE WITHOUT THE APPROVAL OF THE ENGINEER.
- 8. THE PLAN IS NOT TO BE USED FOR ANY OTHER PURPOSE WITHOUT THE APPROVAL OF THE ENGINEER.
- 9. THE PLAN IS NOT TO BE USED FOR ANY OTHER PURPOSE WITHOUT THE APPROVAL OF THE ENGINEER.
- 10. THE PLAN IS NOT TO BE USED FOR ANY OTHER PURPOSE WITHOUT THE APPROVAL OF THE ENGINEER.



EXISTING CONDITIONS: PRELIMINARY STUDY: AUGUST 2009



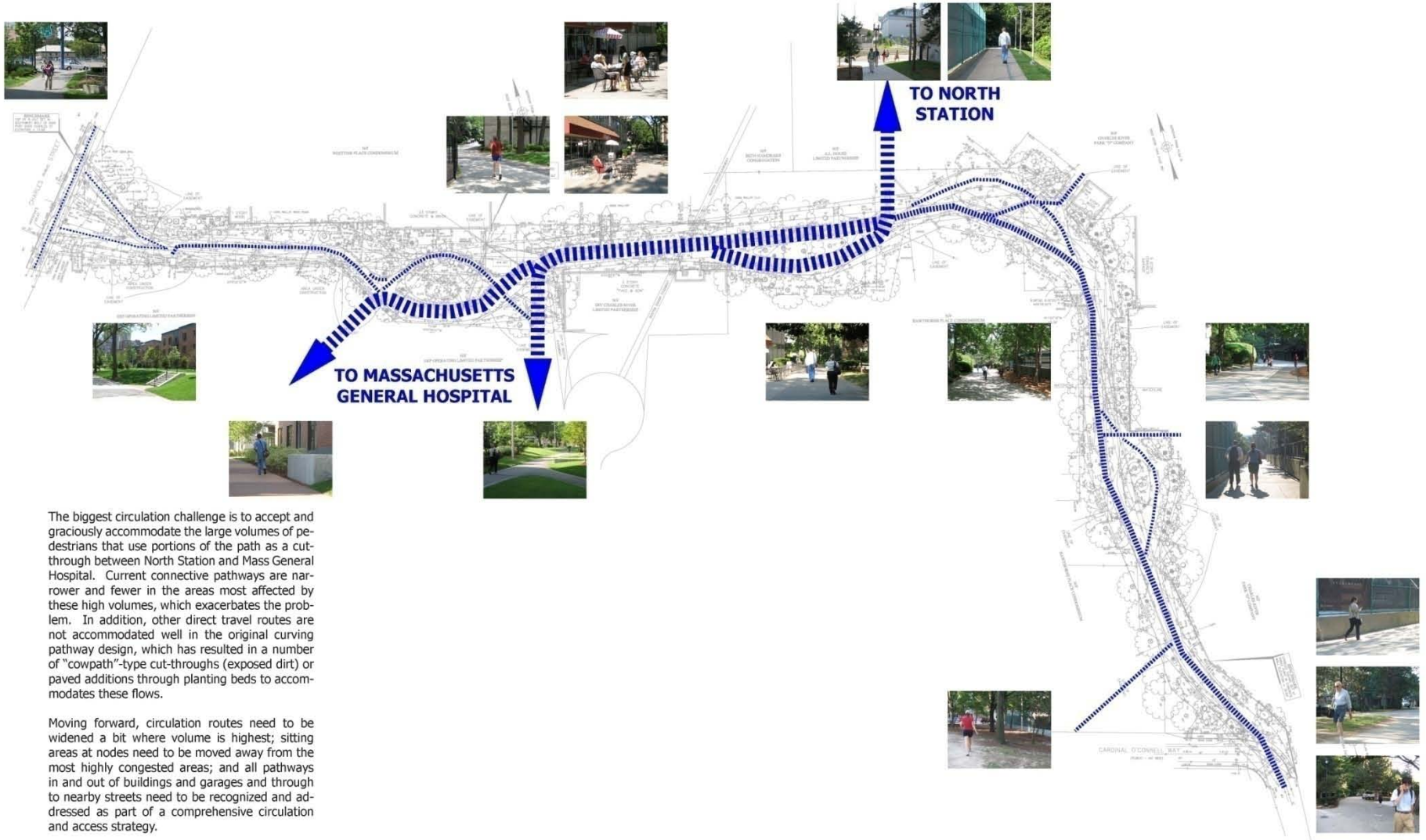
The existing pathway at first glance looks okay, but at closer inspection reveals a series of cracks, patches, and drainage/puddling problems that will require attention.

Drainage issues generally affect the lower section of the pathway, and can be addressed with paving/elevation changes that make the existing system work better.

These changes, though, in addition to the numerous bituminous patches across concrete sidewalks, and in addition to two significant areas of bituminous paving, point to a need to standardize the underlying, non-feature paving material: either concrete or bituminous, not both. Either way, the extent of undamaged concrete pathway suggests that the new background paving material continue to be concrete (and that future patches be mandated to be concrete), or that new paving materials be set atop areas of existing, stable concrete.

- CRACKS
- PATCHES
- BITUMINOUS PATH
- INVASIVE PLANT MATERIAL
- PUDDLES
- DEBRIS/SEDIMENT COLLECTIONS

EXISTING CIRCULATION PRELIMINARY STUDY: AUGUST 2009



The biggest circulation challenge is to accept and graciously accommodate the large volumes of pedestrians that use portions of the path as a cut-through between North Station and Mass General Hospital. Current connective pathways are narrower and fewer in the areas most affected by these high volumes, which exacerbates the problem. In addition, other direct travel routes are not accommodated well in the original curving pathway design, which has resulted in a number of "cowpath"-type cut-throughs (exposed dirt) or paved additions through planting beds to accommodate these flows.

Moving forward, circulation routes need to be widened a bit where volume is highest; sitting areas at nodes need to be moved away from the most highly congested areas; and all pathways in and out of buildings and garages and through to nearby streets need to be recognized and addressed as part of a comprehensive circulation and access strategy.



geologic foundations
+
social histories

0 100 500 1000



0 100 500 1000

NORTH CHARLES

AUBURN

BRIGHTON

SECOND

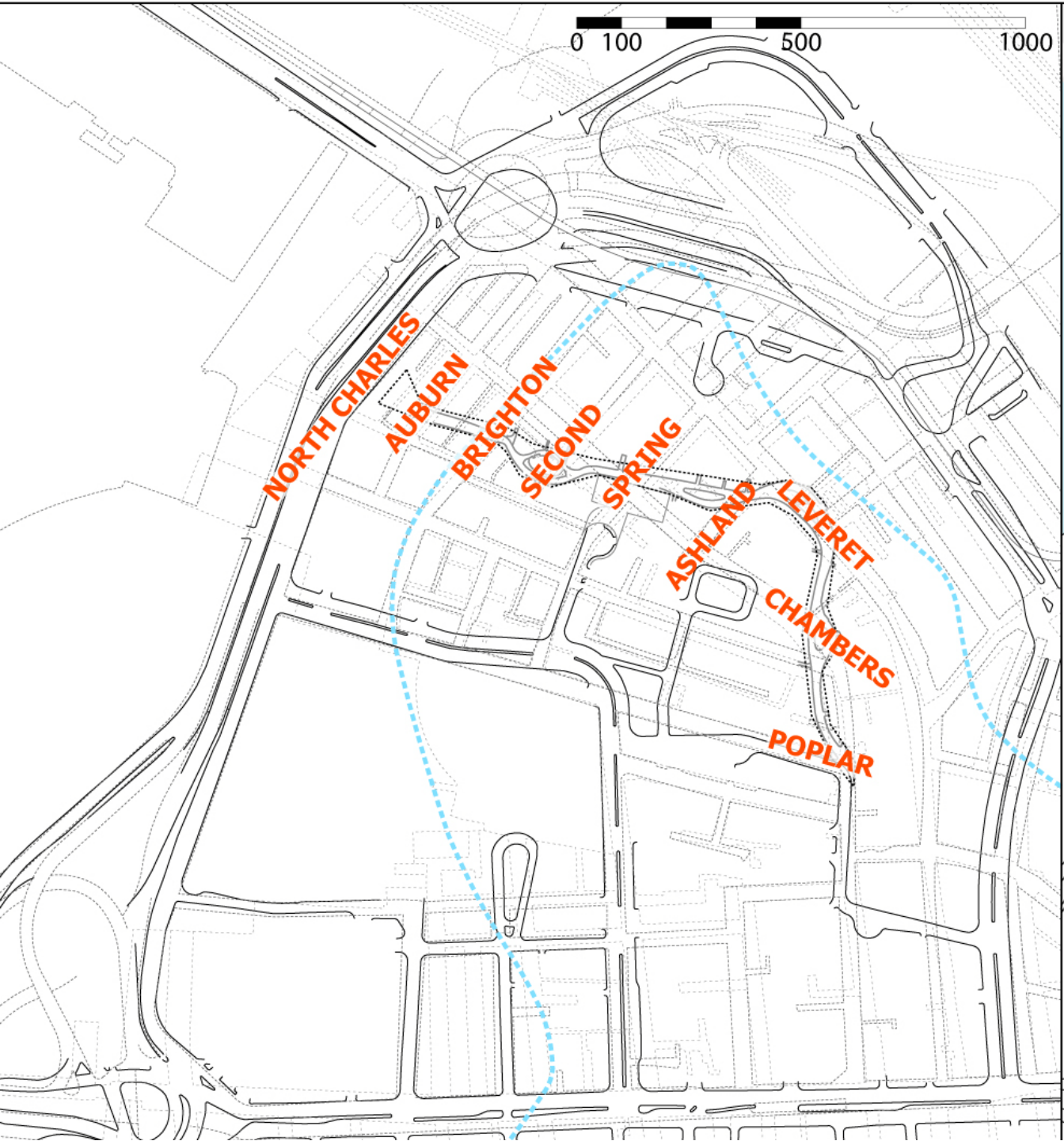
SPRING

ASHLAND

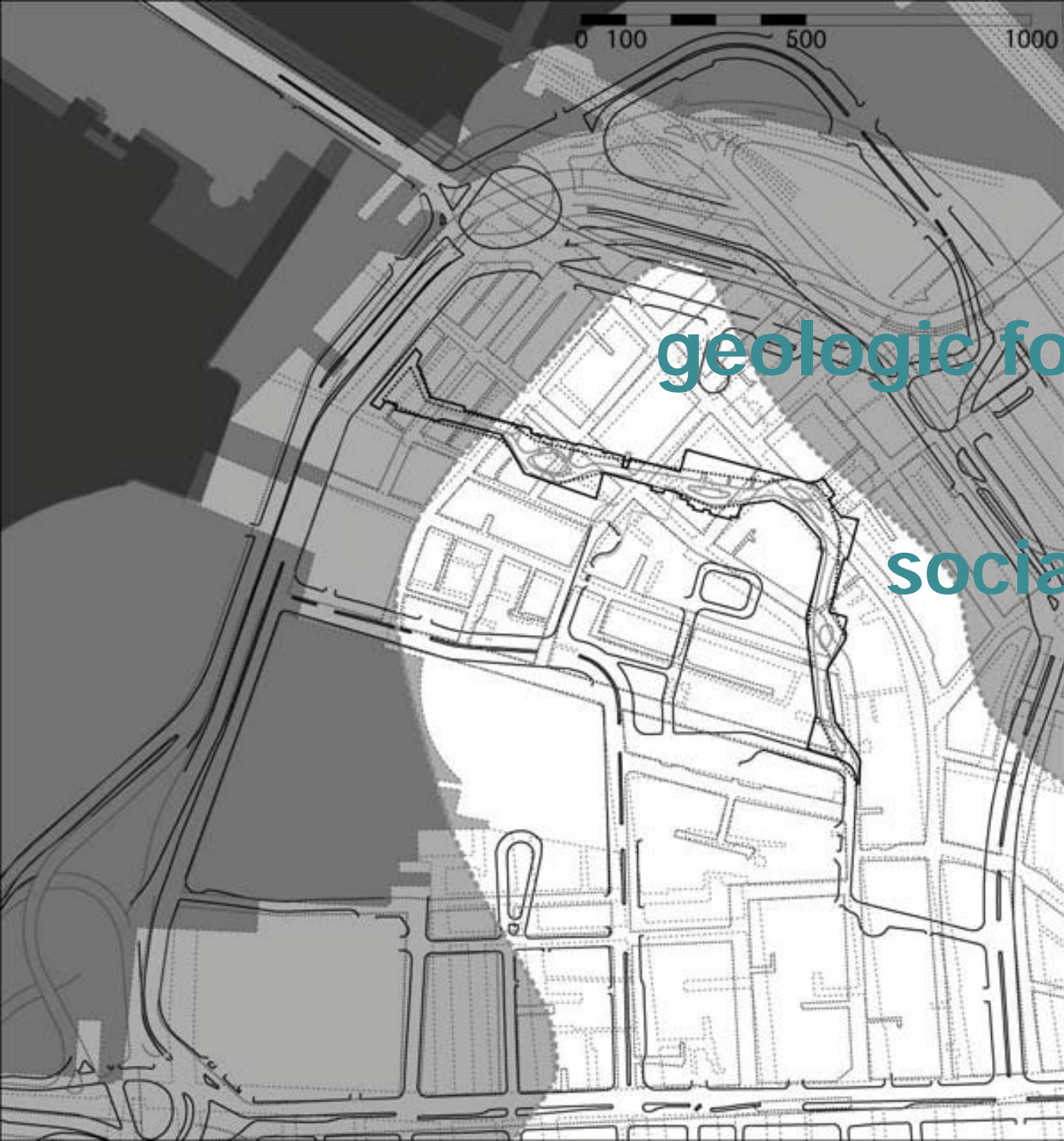
LEVERET

CHAMBERS

POPLAR





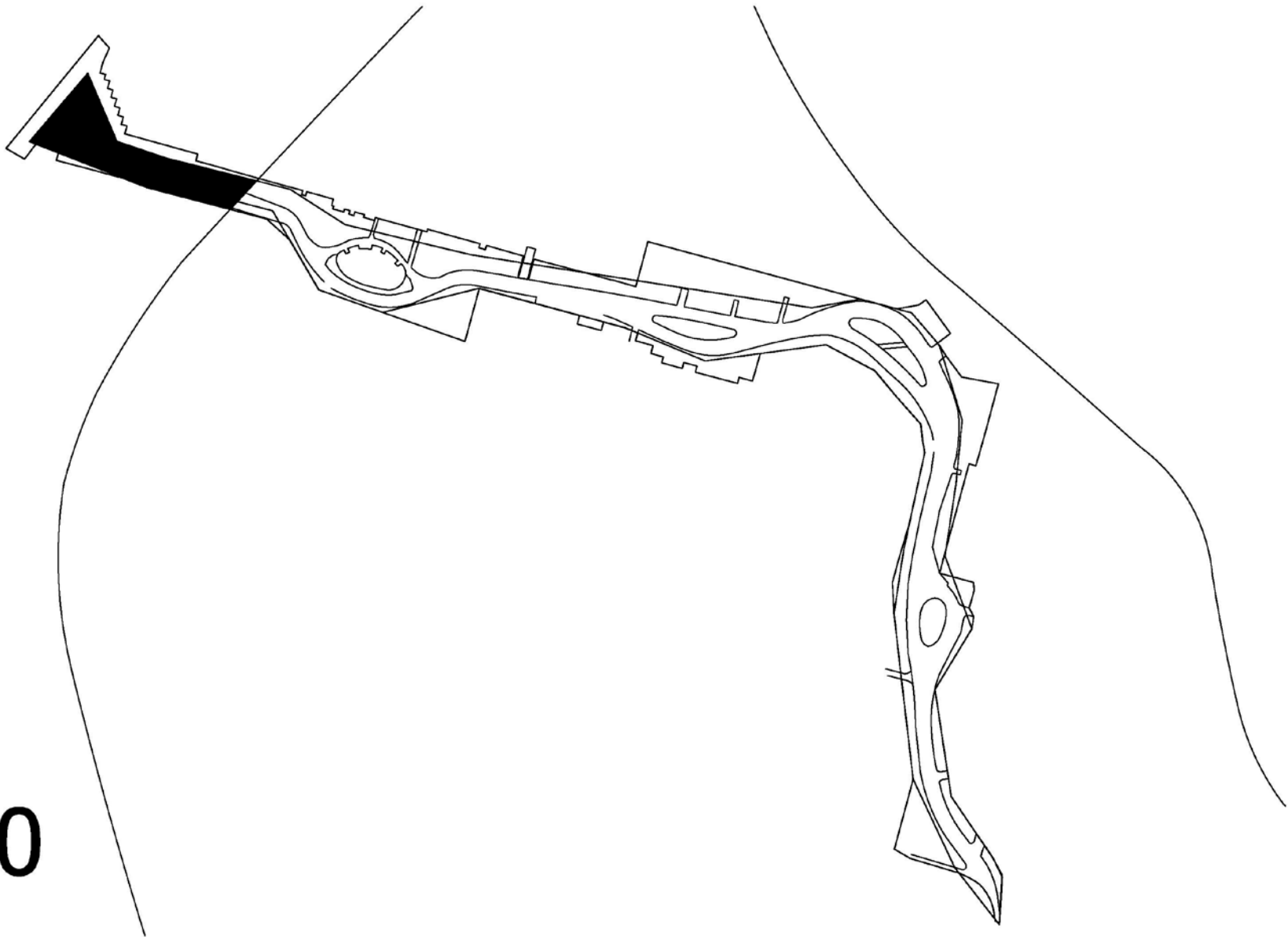


geologic foundations
+
social histories



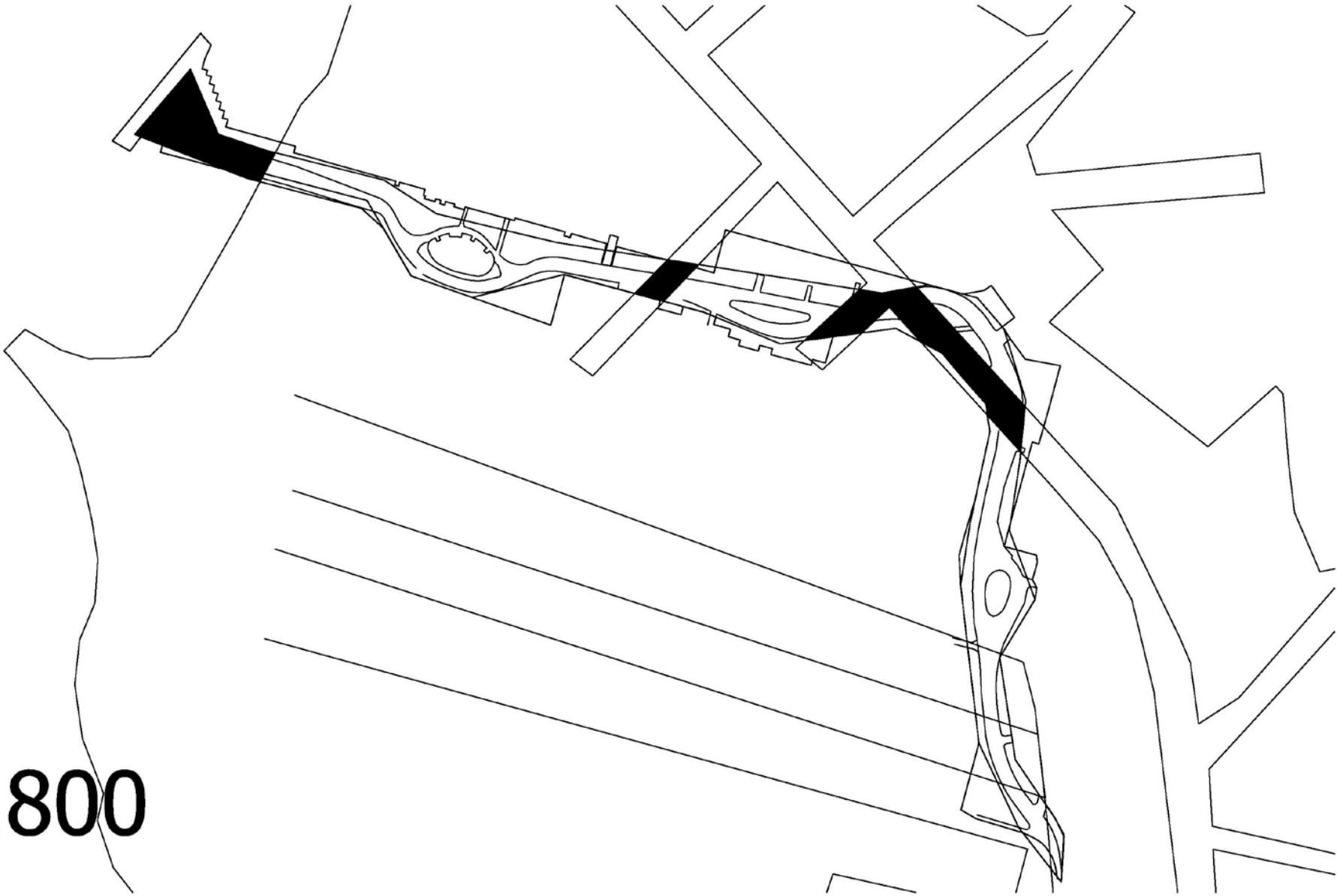
revised schemes

social histories

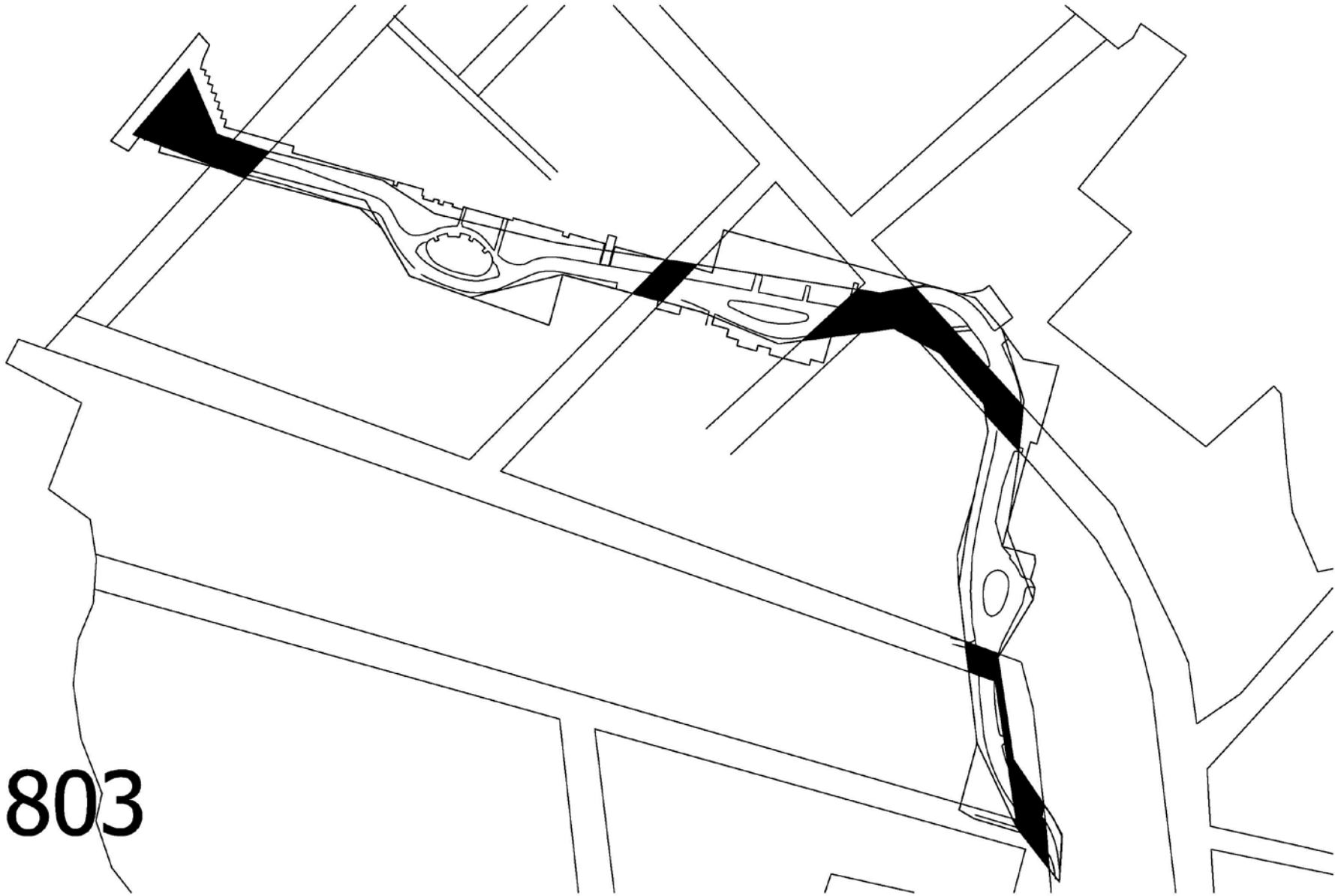


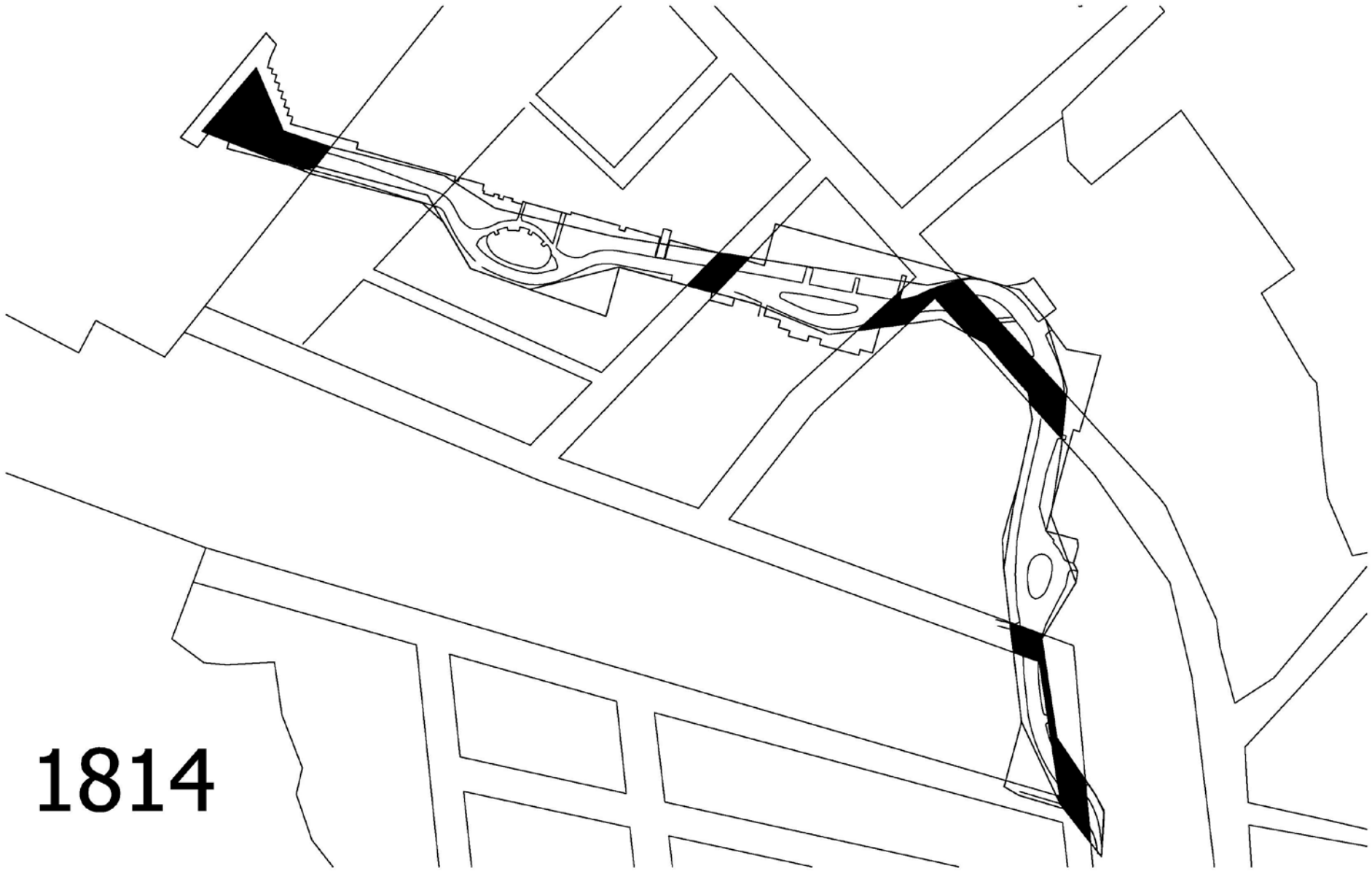
1630

1800

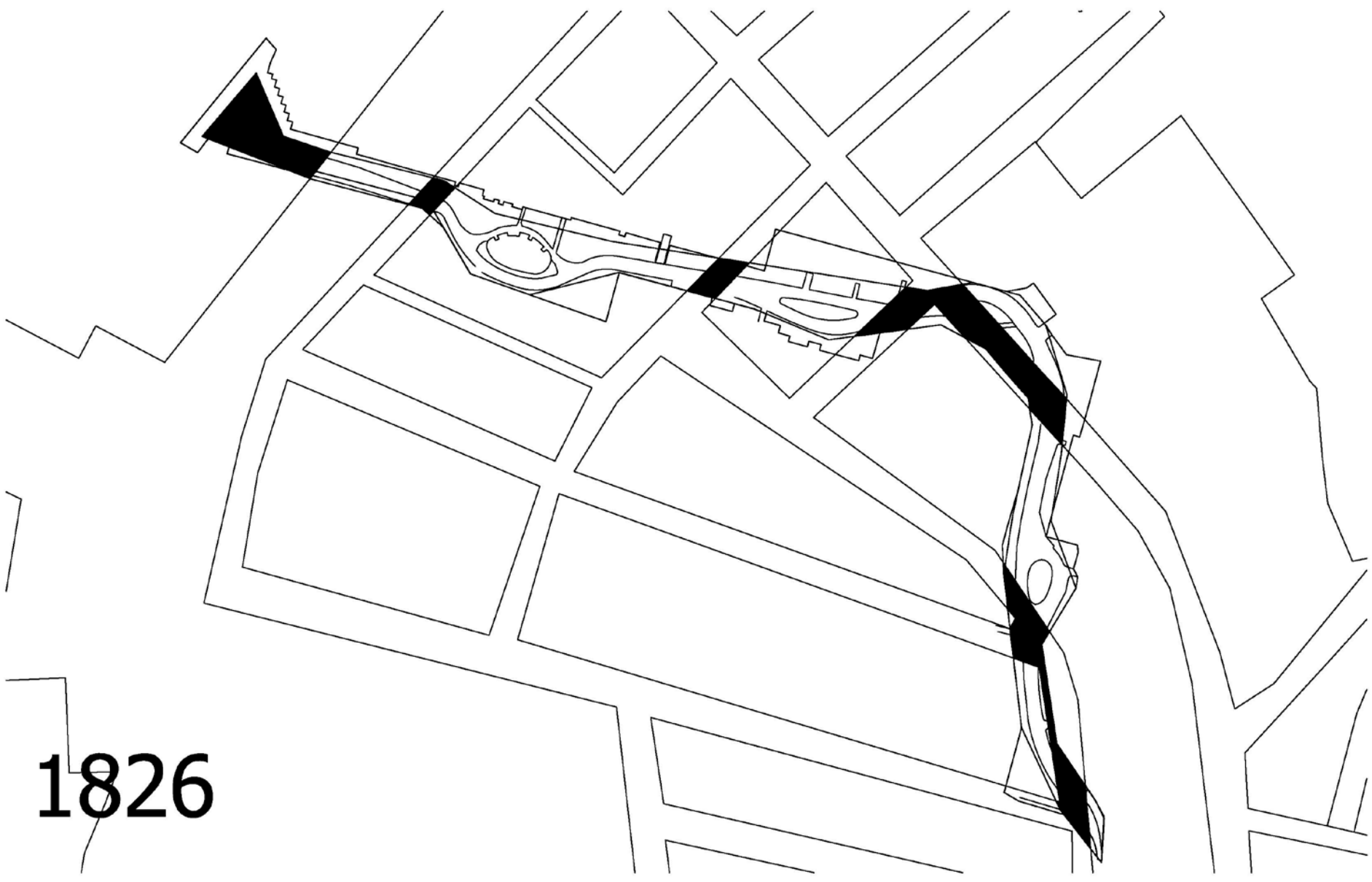


1803





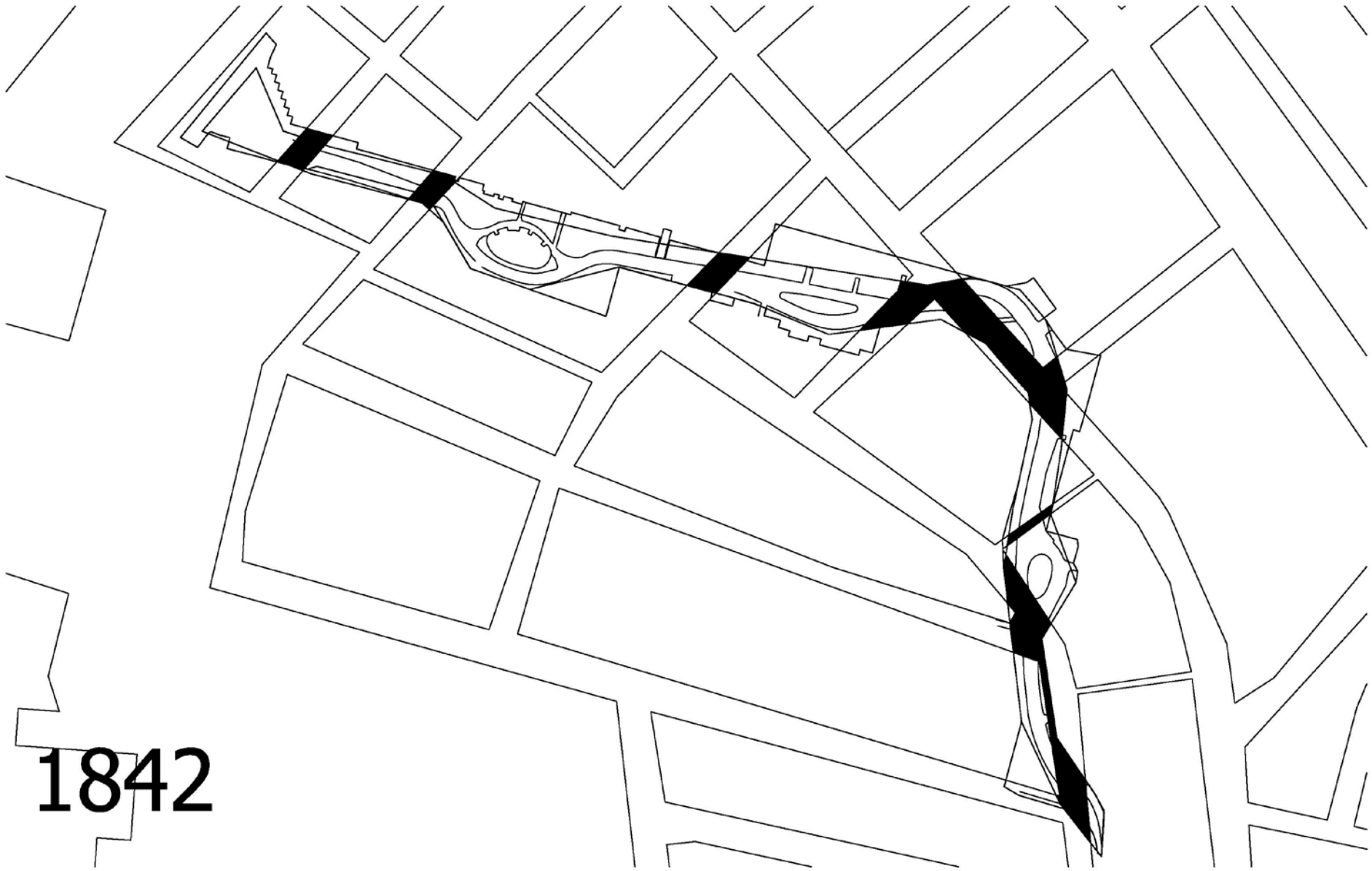
1814



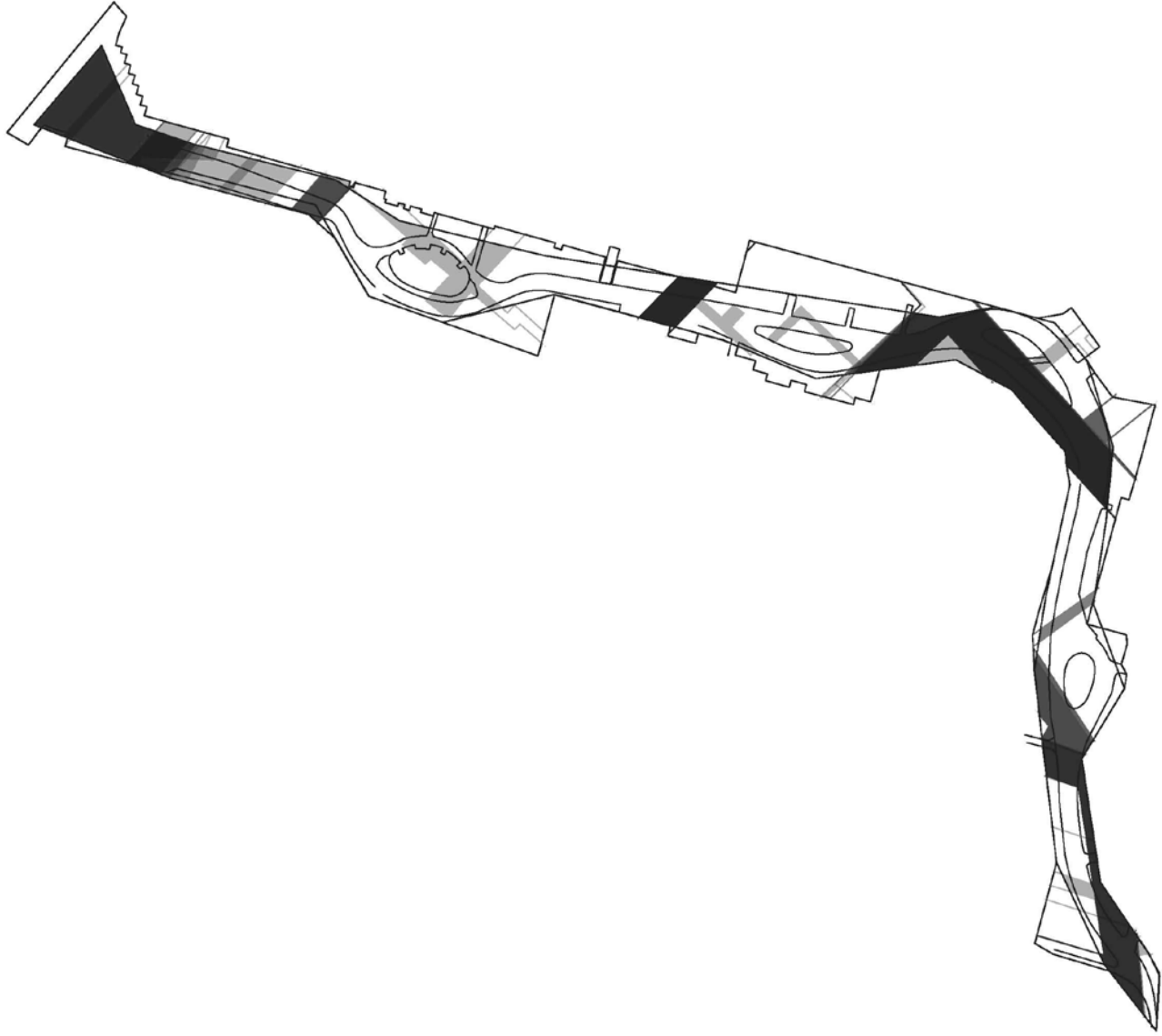
1826

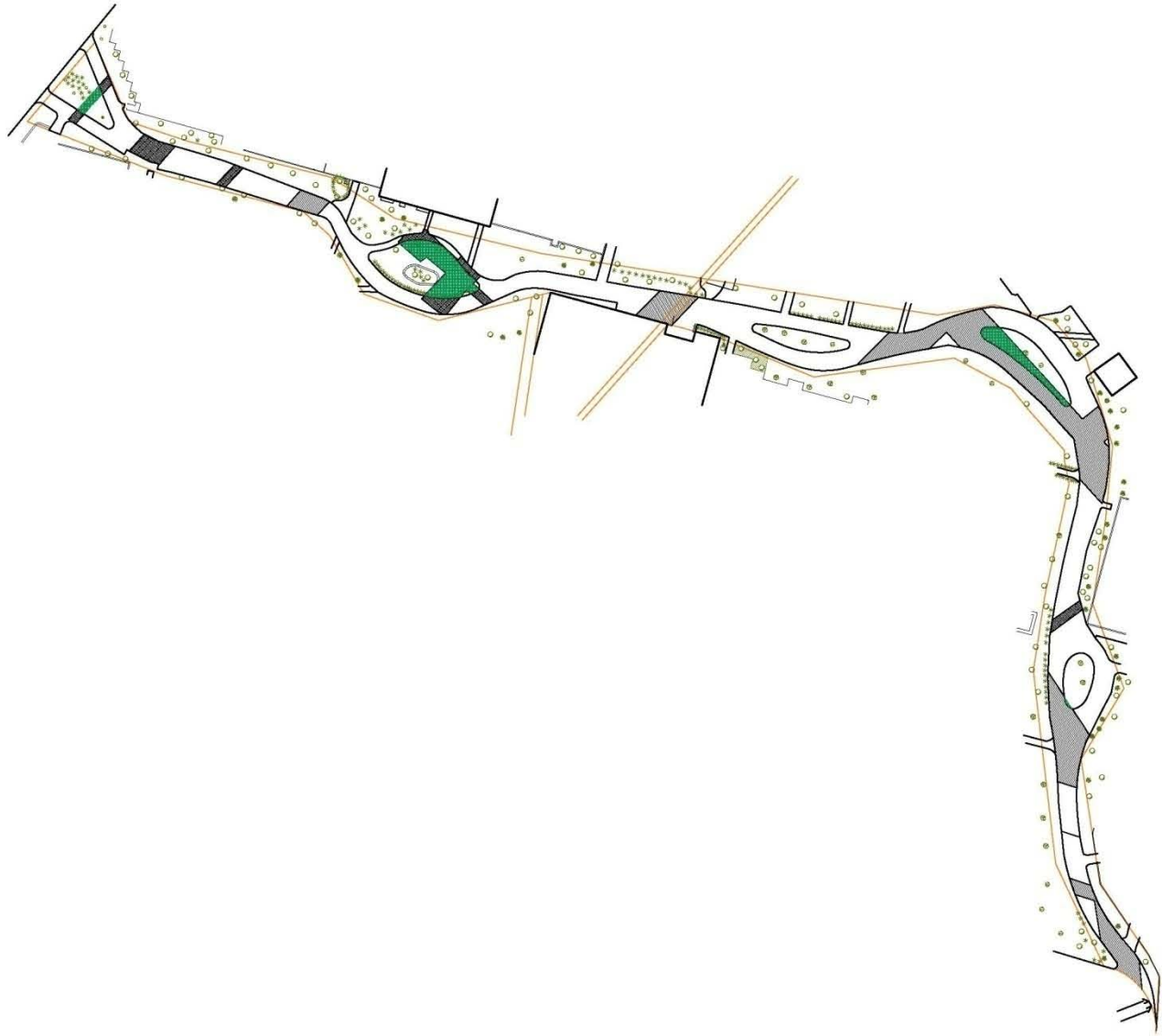


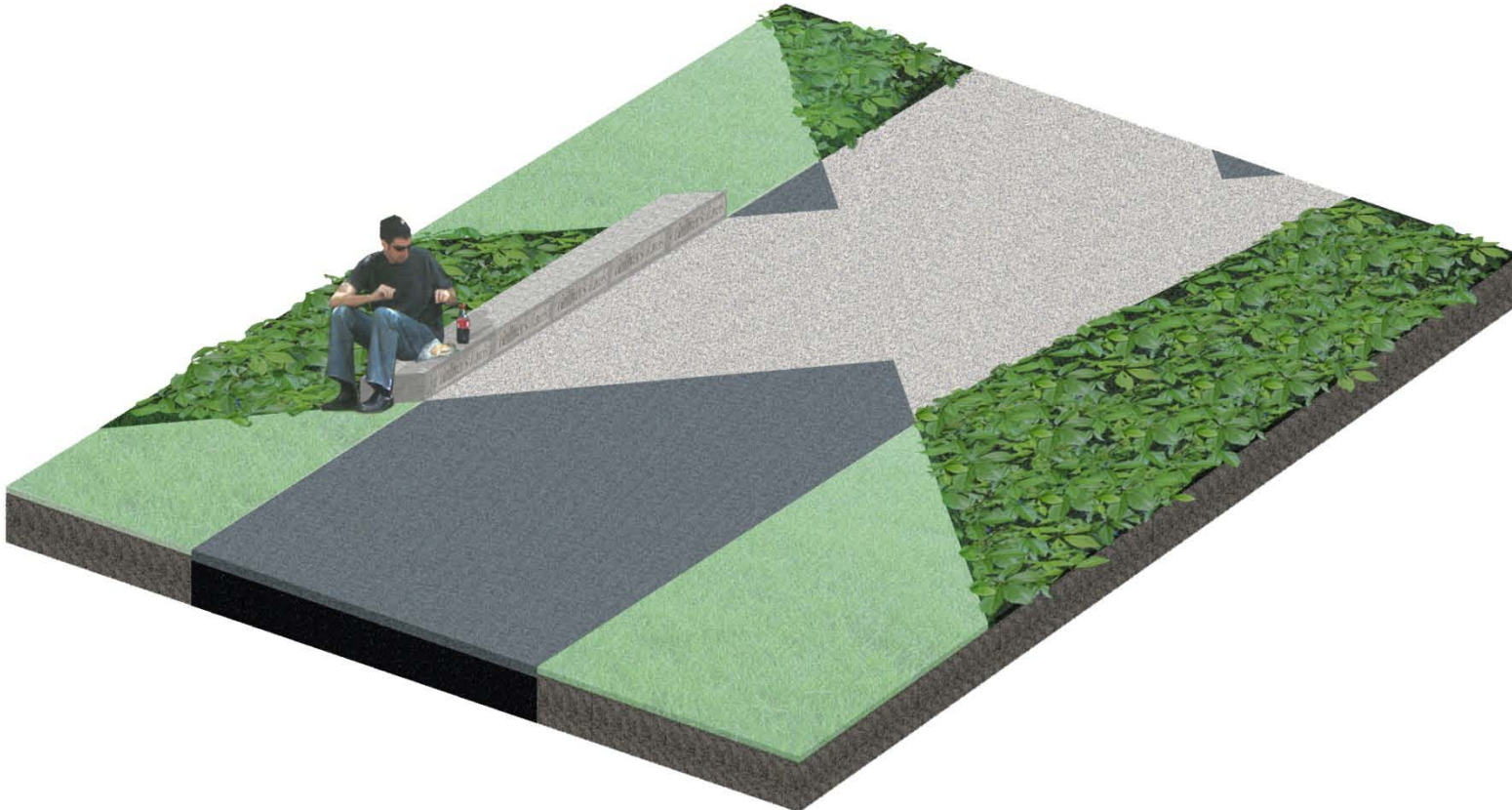
1838



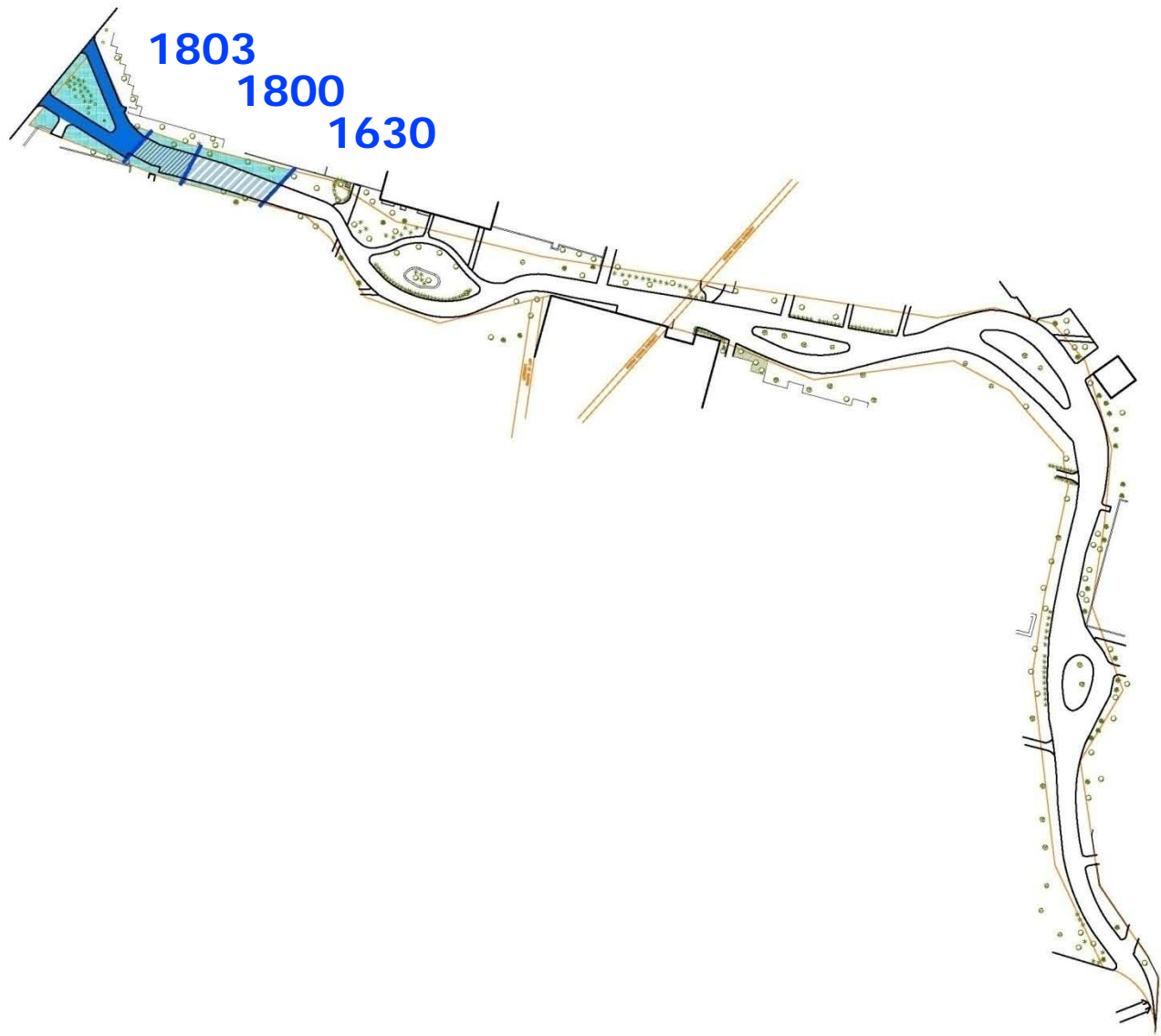
1842

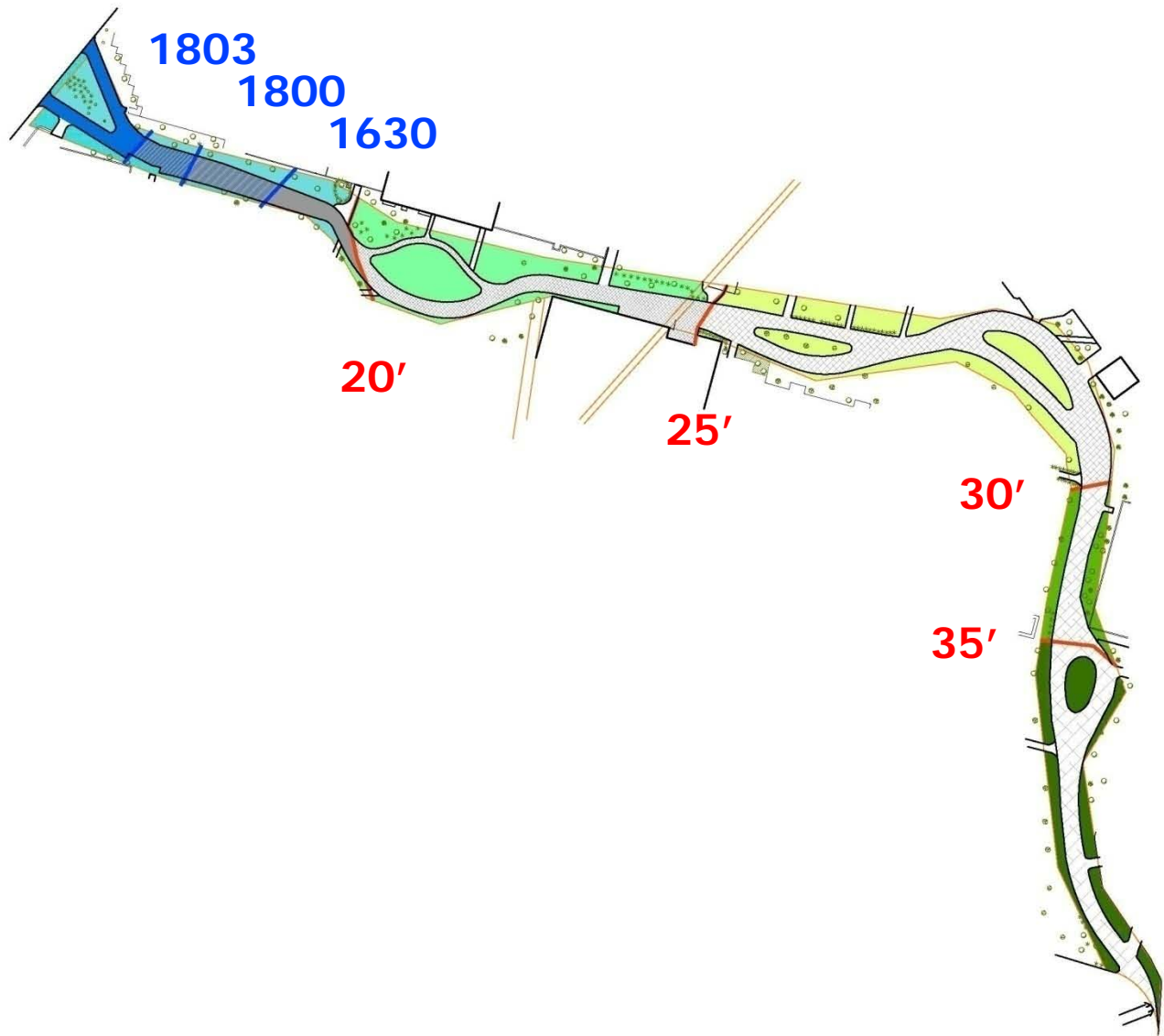






site topographies





PLANTINGS

lowland

Juncus effusus (smooth rush)
Senecio aureus (golden ragwort)
Aquilegia canadensis (red columbine)



Solidago speciosa (showy goldenrod)
Euthamia graminifolia (flat-top goldenrod)
Lysimachia quadrifolia (whorled yellow loosestrife)

lower midland

Verbena hastata (swamp vervain)
Eupatorium purpureum (joe pye weed)
Pontederia cordata (pickerelweed)



Symphoricarum cordifolium (blue wood aster)
Geranium maculatum (wild geranium)
Polygonum virginianum (jumpseed)

midland

Dennstaedtia punctilobula (hay scented fern)
Athyrium filix-femina (common lady fern)
Polystichum acrostichoides (christmas fern)



Dryopteris intermedia (gray wood fern)
Dryopteris marginalis (marginal wood fern)
Osmunda claytoniana (interrupted fern)
Polystichum polybelfarum (tassel fern)

PLANTINGS

upper midland

Hedera helix (english ivy)
Parthenocissus quinquefolia (virginia creeper)

Ajuga reptans (bugleweed)
Campsis radicans (trumpet vine)

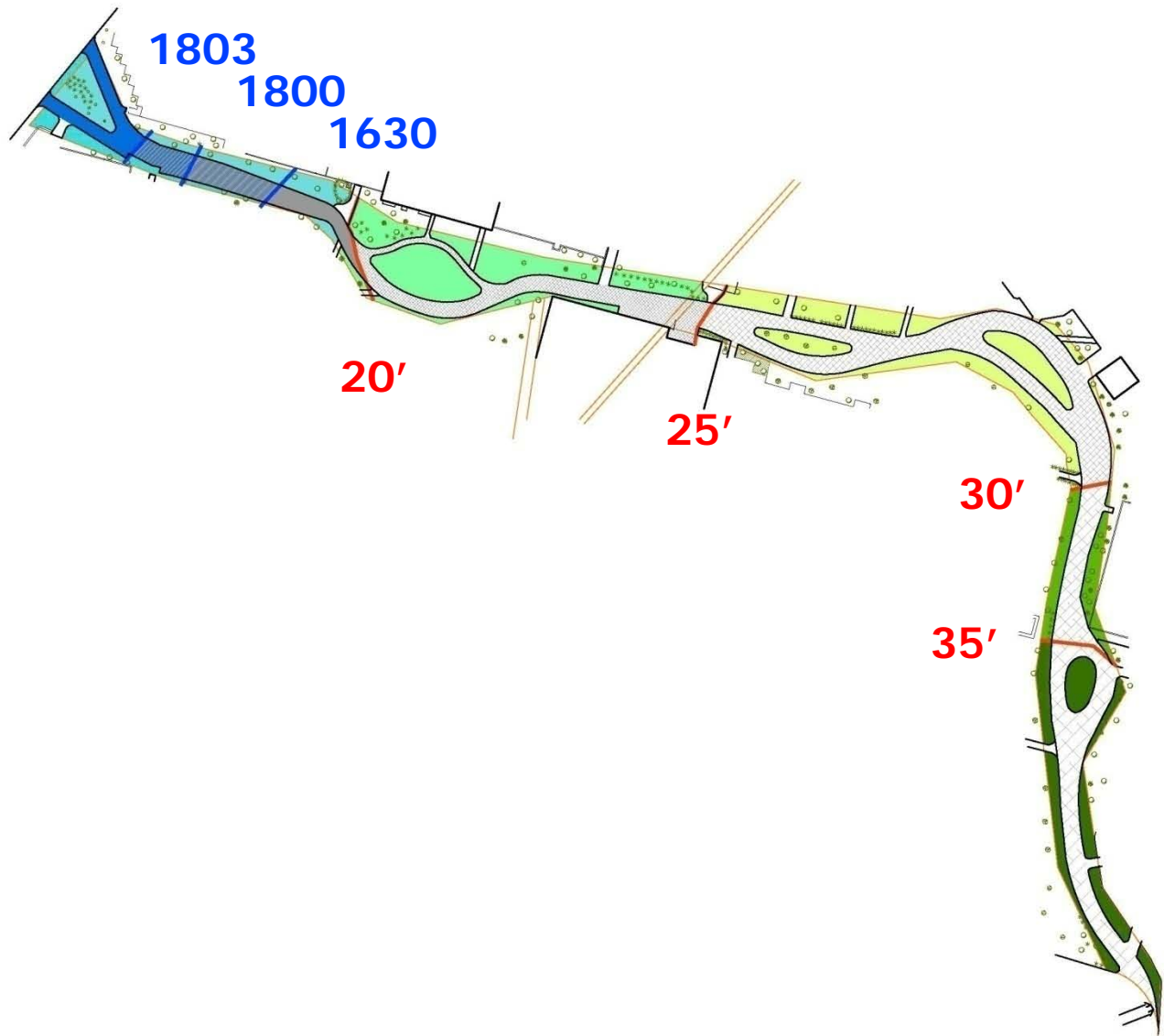


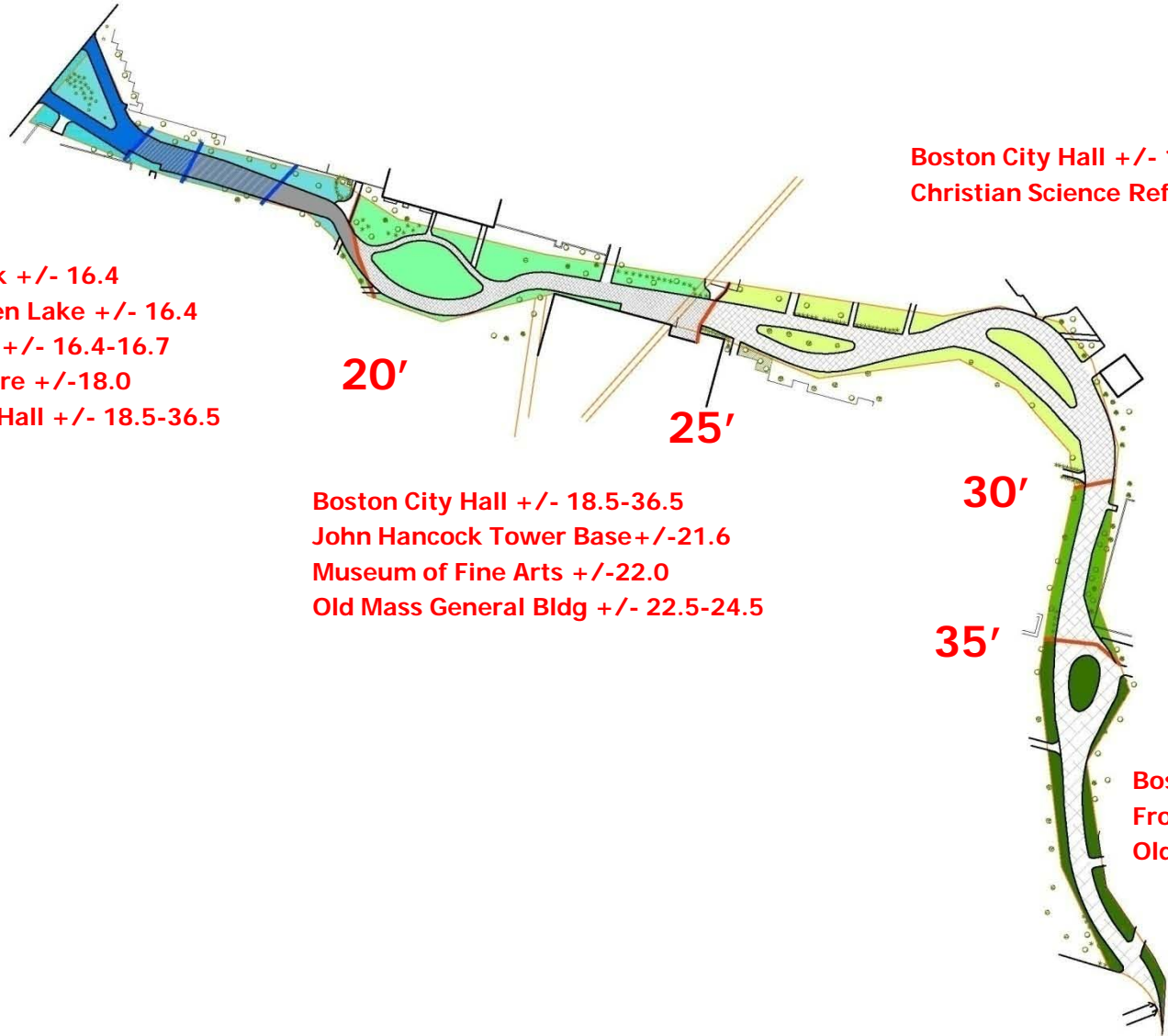
upland

Arctostaphylos uva-ursi (bearberry)
Corema conradii (broom crowberry)

Vaccinium angustifolium (low bush blueberry)
Moneses uniflora (one-flowered wintergreen)
Chimaphila umbellata (prince's pine)
Epigaea repens (mayflower)
Kalmia angustifolia (sheep laurel)







Fenway Park +/- 16.4
Public Garden Lake +/- 16.4
Faneuil Hall +/- 16.4-16.7
Copley Square +/- 18.0
Boston City Hall +/- 18.5-36.5

20'

25'

Boston City Hall +/- 18.5-36.5
John Hancock Tower Base +/- 21.6
Museum of Fine Arts +/- 22.0
Old Mass General Bldg +/- 22.5-24.5

Boston City Hall +/- 18.5-36.5
Christian Science Reflecting Pool +/- 25.2

30'

35'

Boston City Hall +/- 18.5-36.5
Frog Pond +/- 36.5
Old West Church +/- 37.5



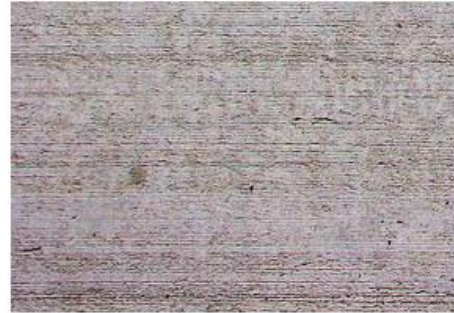
SEATING



materials

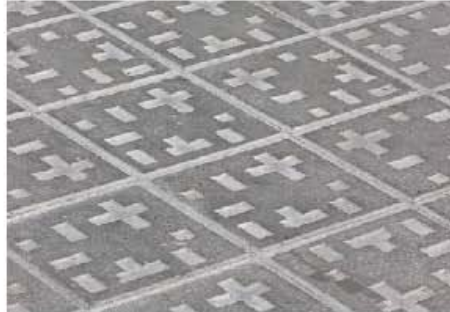
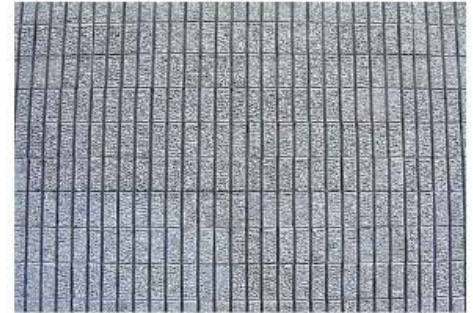
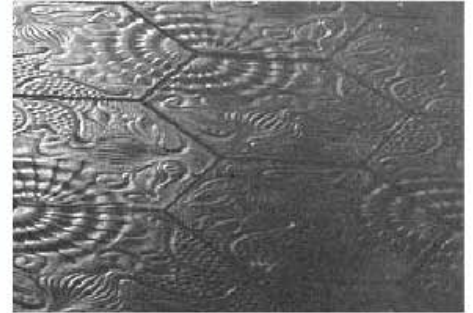
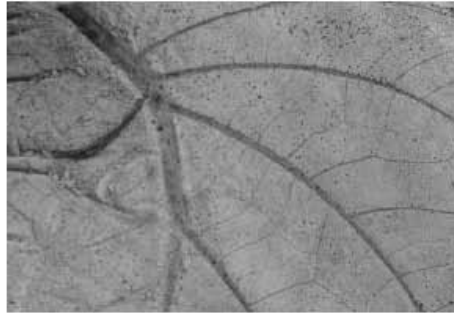
CONCRETE FINISHES

stamped / brushed / patterned



CONCRETE FINISHES

stamped / brushed / patterned



CONCRETE FINISHES

rock salt etched



sandblasted / shot blasted

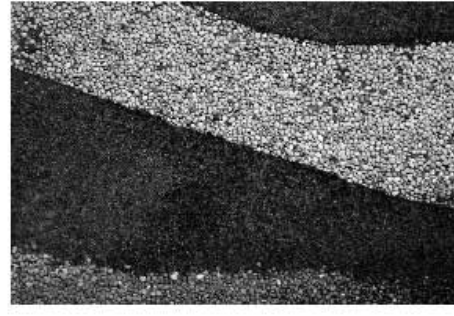


exposed aggregates



INCISED / PATCHED SURFACES

stabilized aggregates



rubber

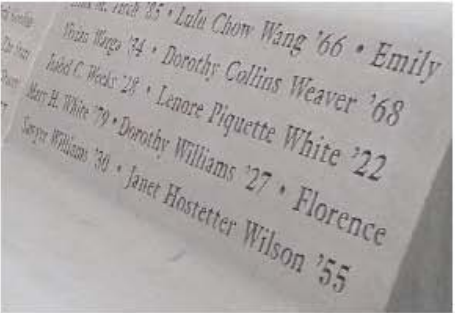
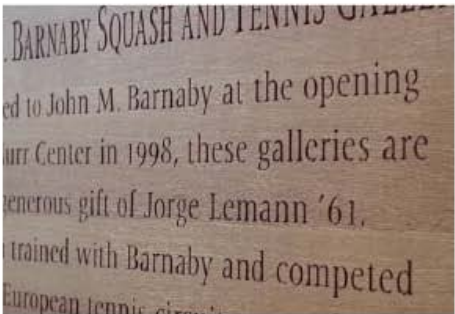


glow



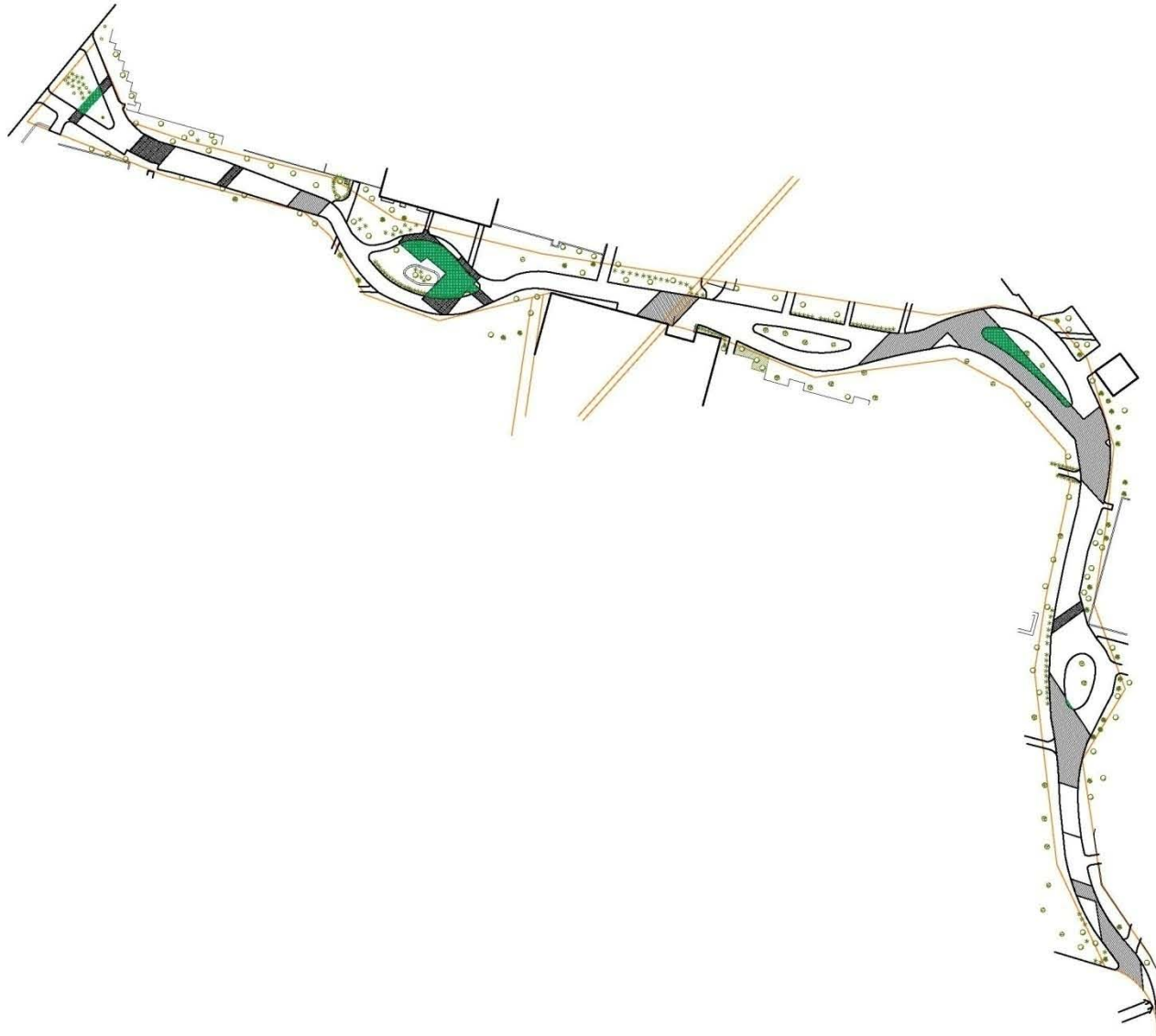
integrated text

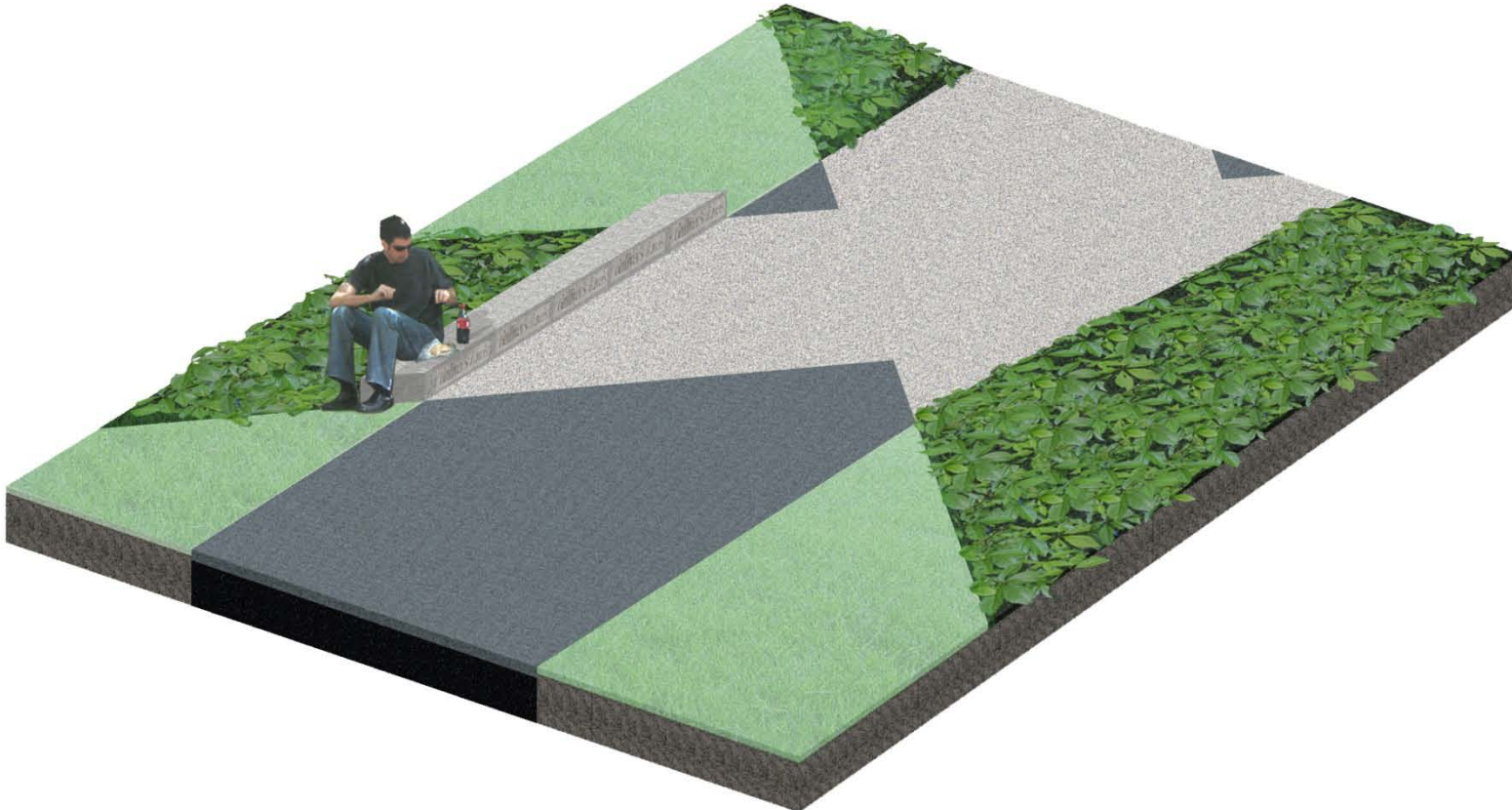
INTERPRETATIVE SURFACES



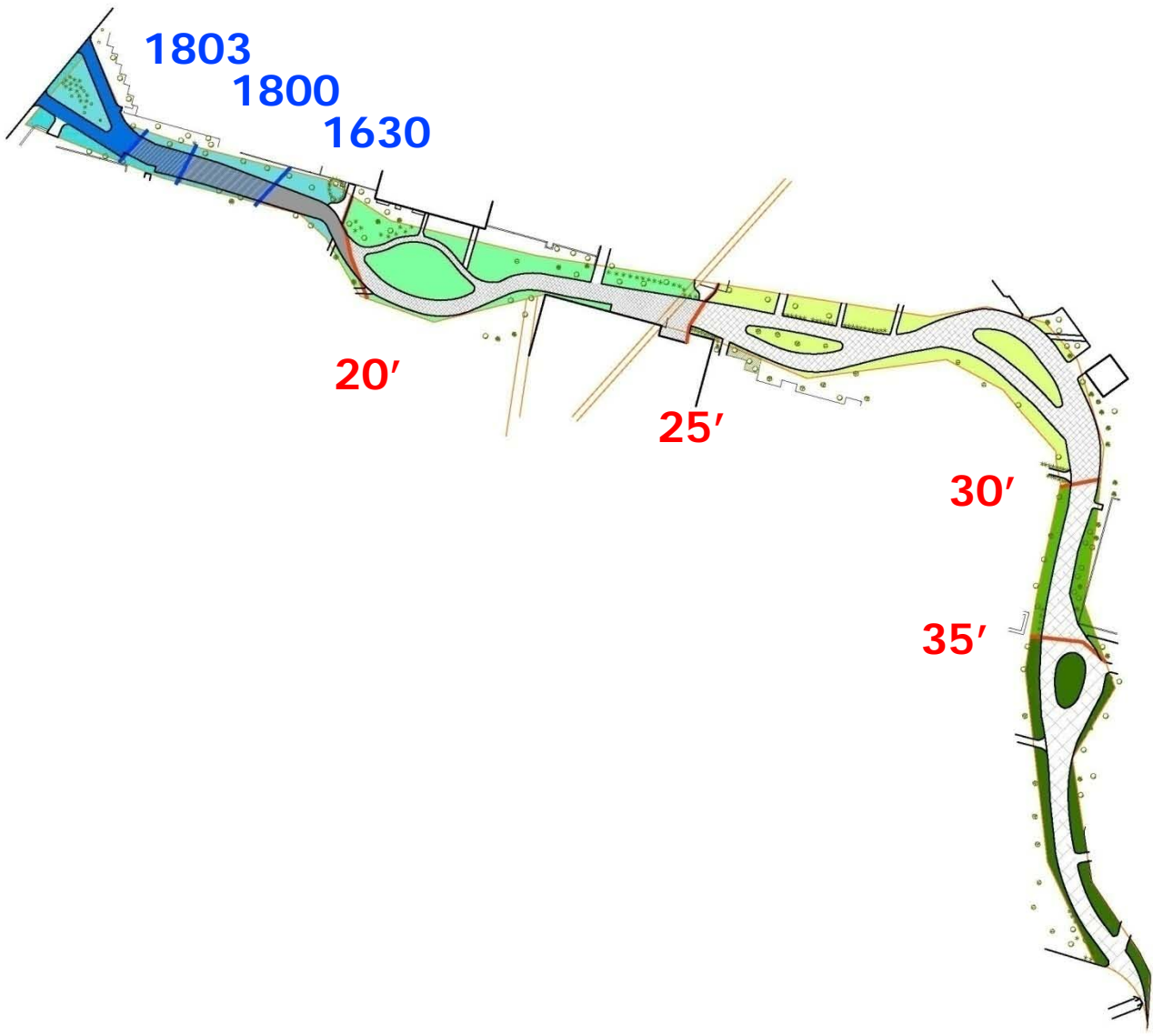
INTERPRETATIVE SURFACES







site topographies





A photograph of a paved path in a park-like setting. The path is wide and paved, leading through a dense canopy of green trees. In the background, a multi-story building with windows is visible. The scene is bright and sunny, with dappled shadows on the path. The text "thoreau path" is overlaid in a large, light blue, sans-serif font across the center of the image.

thoreau path

Two people are sitting on a bench on the right side of the path, looking towards the left. One person is wearing a light blue shirt and blue jeans, and the other is wearing a white shirt and blue jeans. They appear to be engaged in conversation or looking at something together.

Stoss Landscape Urbanism

landscape architecture, team lead

Boston, MA

Wojciechowski Design

signage design

Somerville, MA

Nitsch Engineering

civil + transportation engineering

site sustainability

Boston, MA

Davis Langdon

cost estimating

Boston, MA

Bryant Associates

surveying

Cambridge, MA

McPhail Associates

geotechnical engineering + testing

Boston, MA

