

thoreau path

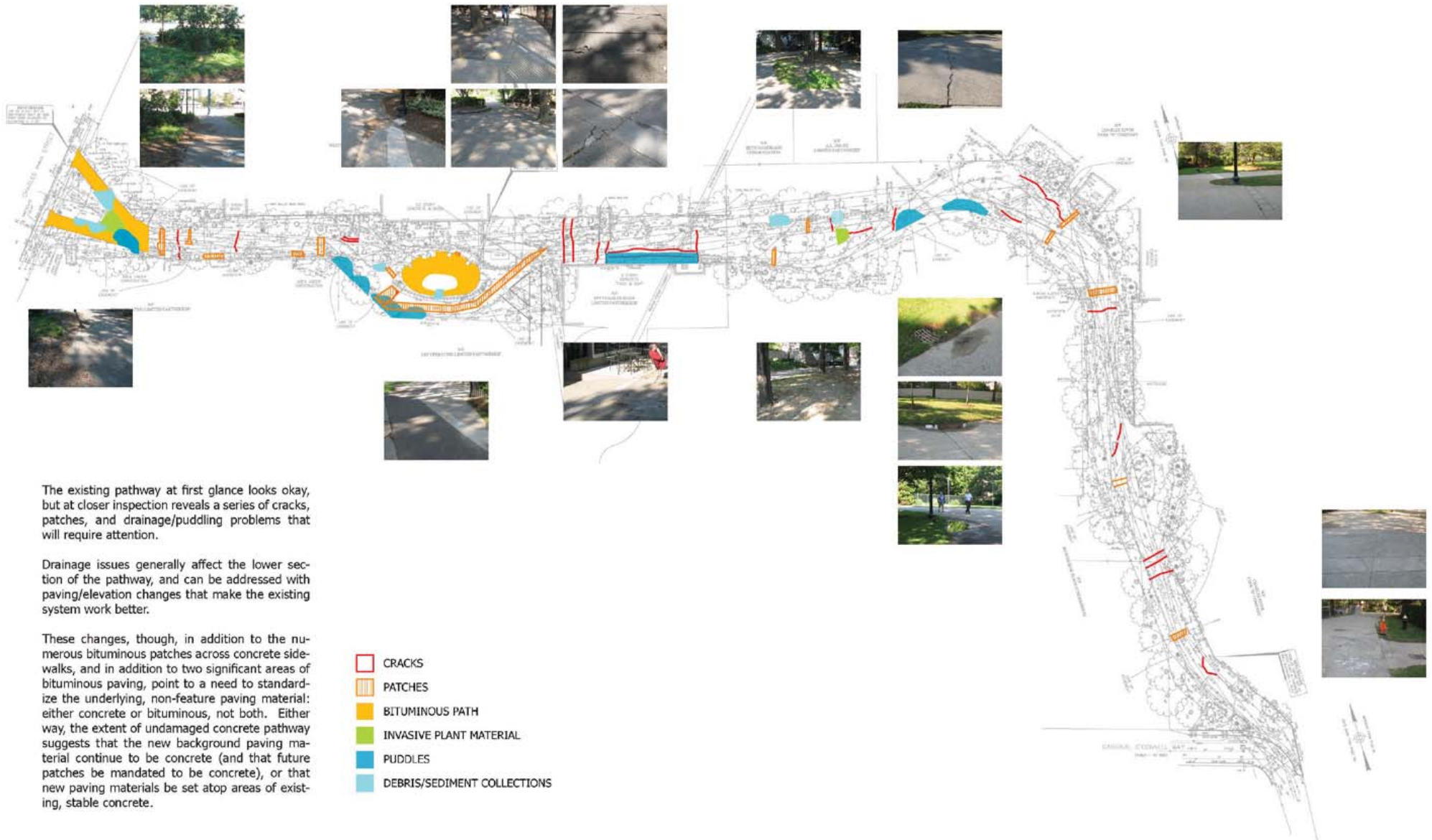


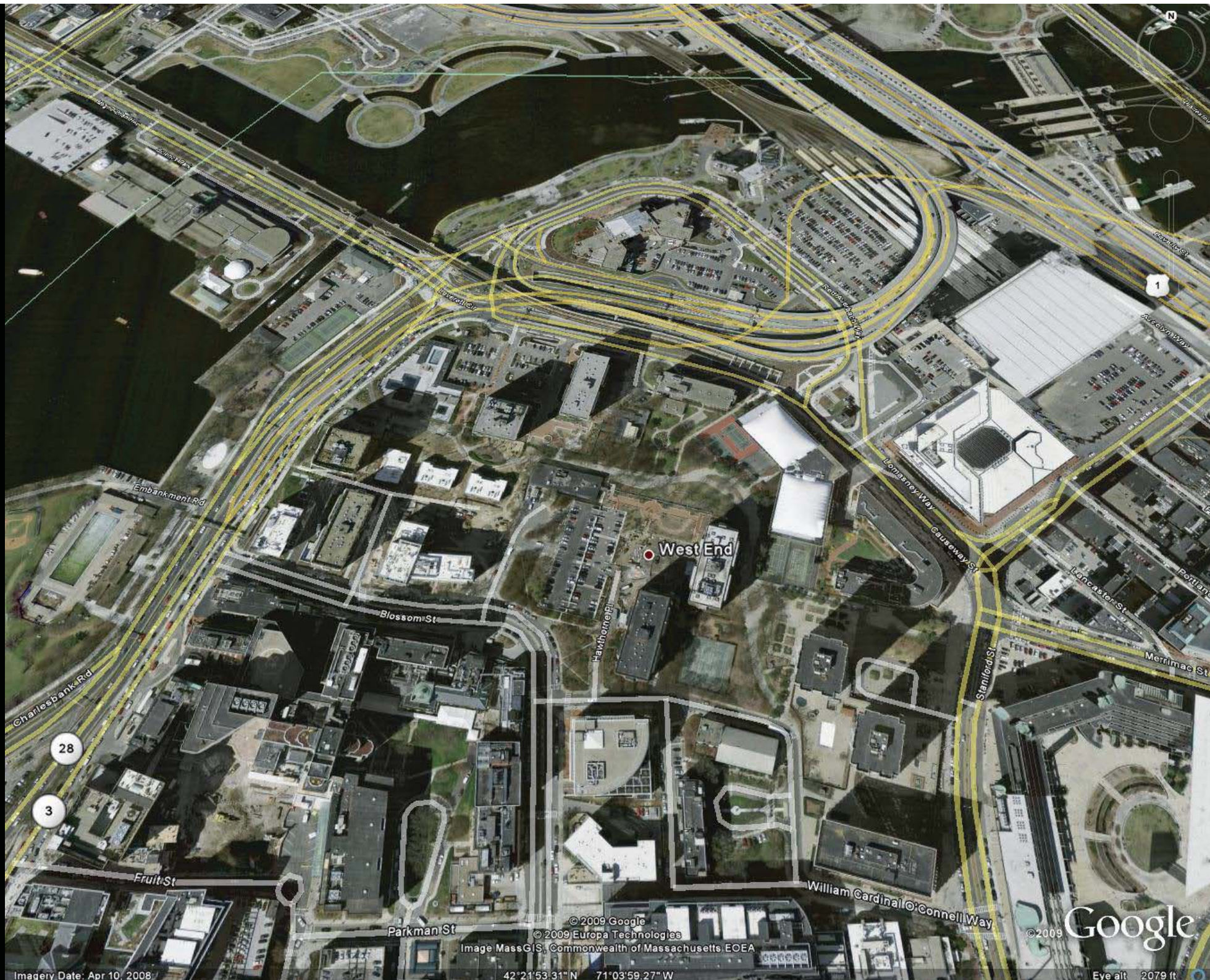
from public input / feedback:

- **Thoreau Path is a PATH not a park**
- **Thoreau Path is a NEIGHBORHOOD WALKWAY not an urban destination**

- **Provide a safe, consistent, durable surface along the entire path (that meets all codes);**
- **Provide low-maintenance, low-to-the-ground plantings (remove shrubs that block sight-lines);**
- **Provide regulatory + directional signage, emergency phones + a few benches for people to rest along the path;**

EXISTING CONDITIONS: PRELIMINARY STUDY: AUGUST 2009





West End

Blossom St

Hawthorn St

Lomax Way

Causeway St

Stanford St

William Cardinal O'Connell Way

Parkman St

Fruit St

Charlesbank Rd

Embankment Rd

28

3

Imagery Date: Apr 10, 2008

© 2009 Google
© 2009 Europa Technologies
Image MassGIS, Commonwealth of Massachusetts EOE

42°21'53.31" N 71°03'59.27" W

© 2009 Google

Eye alt 2079 ft



LEGEND

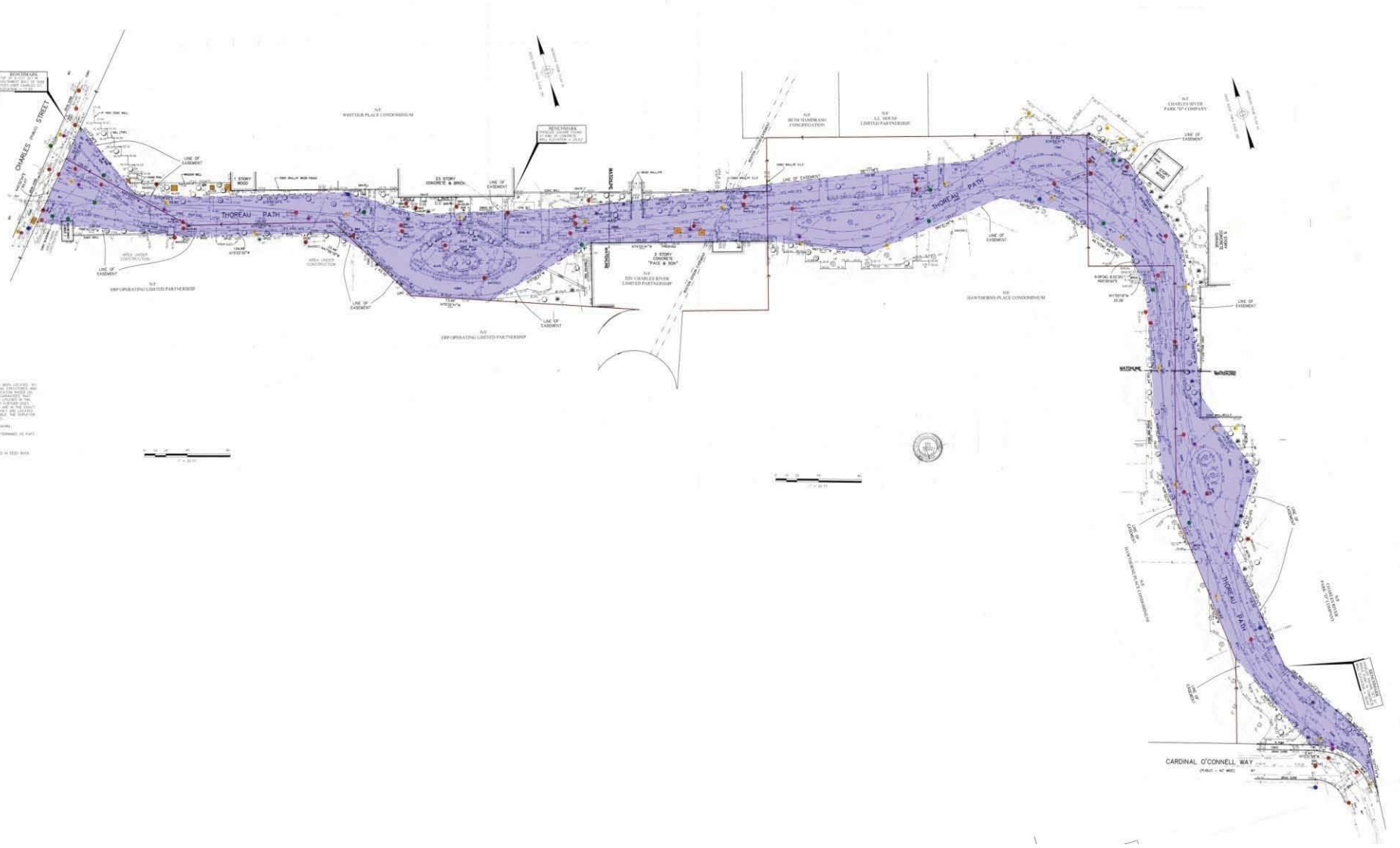
- 1.00' Contour
- 2.00' Contour
- 3.00' Contour
- 4.00' Contour
- 5.00' Contour
- 6.00' Contour
- 7.00' Contour
- 8.00' Contour
- 9.00' Contour
- 10.00' Contour
- 11.00' Contour
- 12.00' Contour
- 13.00' Contour
- 14.00' Contour
- 15.00' Contour
- 16.00' Contour
- 17.00' Contour
- 18.00' Contour
- 19.00' Contour
- 20.00' Contour
- 21.00' Contour
- 22.00' Contour
- 23.00' Contour
- 24.00' Contour
- 25.00' Contour
- 26.00' Contour
- 27.00' Contour
- 28.00' Contour
- 29.00' Contour
- 30.00' Contour
- 31.00' Contour
- 32.00' Contour
- 33.00' Contour
- 34.00' Contour
- 35.00' Contour
- 36.00' Contour
- 37.00' Contour
- 38.00' Contour
- 39.00' Contour
- 40.00' Contour
- 41.00' Contour
- 42.00' Contour
- 43.00' Contour
- 44.00' Contour
- 45.00' Contour
- 46.00' Contour
- 47.00' Contour
- 48.00' Contour
- 49.00' Contour
- 50.00' Contour
- 51.00' Contour
- 52.00' Contour
- 53.00' Contour
- 54.00' Contour
- 55.00' Contour
- 56.00' Contour
- 57.00' Contour
- 58.00' Contour
- 59.00' Contour
- 60.00' Contour
- 61.00' Contour
- 62.00' Contour
- 63.00' Contour
- 64.00' Contour
- 65.00' Contour
- 66.00' Contour
- 67.00' Contour
- 68.00' Contour
- 69.00' Contour
- 70.00' Contour
- 71.00' Contour
- 72.00' Contour
- 73.00' Contour
- 74.00' Contour
- 75.00' Contour
- 76.00' Contour
- 77.00' Contour
- 78.00' Contour
- 79.00' Contour
- 80.00' Contour
- 81.00' Contour
- 82.00' Contour
- 83.00' Contour
- 84.00' Contour
- 85.00' Contour
- 86.00' Contour
- 87.00' Contour
- 88.00' Contour
- 89.00' Contour
- 90.00' Contour
- 91.00' Contour
- 92.00' Contour
- 93.00' Contour
- 94.00' Contour
- 95.00' Contour
- 96.00' Contour
- 97.00' Contour
- 98.00' Contour
- 99.00' Contour
- 100.00' Contour

ABBREVIATIONS

- 1.00' Contour
- 2.00' Contour
- 3.00' Contour
- 4.00' Contour
- 5.00' Contour
- 6.00' Contour
- 7.00' Contour
- 8.00' Contour
- 9.00' Contour
- 10.00' Contour
- 11.00' Contour
- 12.00' Contour
- 13.00' Contour
- 14.00' Contour
- 15.00' Contour
- 16.00' Contour
- 17.00' Contour
- 18.00' Contour
- 19.00' Contour
- 20.00' Contour
- 21.00' Contour
- 22.00' Contour
- 23.00' Contour
- 24.00' Contour
- 25.00' Contour
- 26.00' Contour
- 27.00' Contour
- 28.00' Contour
- 29.00' Contour
- 30.00' Contour
- 31.00' Contour
- 32.00' Contour
- 33.00' Contour
- 34.00' Contour
- 35.00' Contour
- 36.00' Contour
- 37.00' Contour
- 38.00' Contour
- 39.00' Contour
- 40.00' Contour
- 41.00' Contour
- 42.00' Contour
- 43.00' Contour
- 44.00' Contour
- 45.00' Contour
- 46.00' Contour
- 47.00' Contour
- 48.00' Contour
- 49.00' Contour
- 50.00' Contour
- 51.00' Contour
- 52.00' Contour
- 53.00' Contour
- 54.00' Contour
- 55.00' Contour
- 56.00' Contour
- 57.00' Contour
- 58.00' Contour
- 59.00' Contour
- 60.00' Contour
- 61.00' Contour
- 62.00' Contour
- 63.00' Contour
- 64.00' Contour
- 65.00' Contour
- 66.00' Contour
- 67.00' Contour
- 68.00' Contour
- 69.00' Contour
- 70.00' Contour
- 71.00' Contour
- 72.00' Contour
- 73.00' Contour
- 74.00' Contour
- 75.00' Contour
- 76.00' Contour
- 77.00' Contour
- 78.00' Contour
- 79.00' Contour
- 80.00' Contour
- 81.00' Contour
- 82.00' Contour
- 83.00' Contour
- 84.00' Contour
- 85.00' Contour
- 86.00' Contour
- 87.00' Contour
- 88.00' Contour
- 89.00' Contour
- 90.00' Contour
- 91.00' Contour
- 92.00' Contour
- 93.00' Contour
- 94.00' Contour
- 95.00' Contour
- 96.00' Contour
- 97.00' Contour
- 98.00' Contour
- 99.00' Contour
- 100.00' Contour

NOTES

- 1. THIS PLAN IS A PRELIMINARY DESIGN AND IS SUBJECT TO CHANGE WITHOUT NOTICE.
- 2. THE LOCATION OF UNDERGROUND UTILITIES IS NOT SHOWN.
- 3. THE LOCATION OF EXISTING UTILITIES IS NOT SHOWN.
- 4. THE LOCATION OF EXISTING UTILITIES IS NOT SHOWN.
- 5. THE LOCATION OF EXISTING UTILITIES IS NOT SHOWN.
- 6. THE LOCATION OF EXISTING UTILITIES IS NOT SHOWN.
- 7. THE LOCATION OF EXISTING UTILITIES IS NOT SHOWN.
- 8. THE LOCATION OF EXISTING UTILITIES IS NOT SHOWN.
- 9. THE LOCATION OF EXISTING UTILITIES IS NOT SHOWN.
- 10. THE LOCATION OF EXISTING UTILITIES IS NOT SHOWN.
- 11. THE LOCATION OF EXISTING UTILITIES IS NOT SHOWN.
- 12. THE LOCATION OF EXISTING UTILITIES IS NOT SHOWN.
- 13. THE LOCATION OF EXISTING UTILITIES IS NOT SHOWN.
- 14. THE LOCATION OF EXISTING UTILITIES IS NOT SHOWN.
- 15. THE LOCATION OF EXISTING UTILITIES IS NOT SHOWN.
- 16. THE LOCATION OF EXISTING UTILITIES IS NOT SHOWN.
- 17. THE LOCATION OF EXISTING UTILITIES IS NOT SHOWN.
- 18. THE LOCATION OF EXISTING UTILITIES IS NOT SHOWN.
- 19. THE LOCATION OF EXISTING UTILITIES IS NOT SHOWN.
- 20. THE LOCATION OF EXISTING UTILITIES IS NOT SHOWN.
- 21. THE LOCATION OF EXISTING UTILITIES IS NOT SHOWN.
- 22. THE LOCATION OF EXISTING UTILITIES IS NOT SHOWN.
- 23. THE LOCATION OF EXISTING UTILITIES IS NOT SHOWN.
- 24. THE LOCATION OF EXISTING UTILITIES IS NOT SHOWN.
- 25. THE LOCATION OF EXISTING UTILITIES IS NOT SHOWN.
- 26. THE LOCATION OF EXISTING UTILITIES IS NOT SHOWN.
- 27. THE LOCATION OF EXISTING UTILITIES IS NOT SHOWN.
- 28. THE LOCATION OF EXISTING UTILITIES IS NOT SHOWN.
- 29. THE LOCATION OF EXISTING UTILITIES IS NOT SHOWN.
- 30. THE LOCATION OF EXISTING UTILITIES IS NOT SHOWN.
- 31. THE LOCATION OF EXISTING UTILITIES IS NOT SHOWN.
- 32. THE LOCATION OF EXISTING UTILITIES IS NOT SHOWN.
- 33. THE LOCATION OF EXISTING UTILITIES IS NOT SHOWN.
- 34. THE LOCATION OF EXISTING UTILITIES IS NOT SHOWN.
- 35. THE LOCATION OF EXISTING UTILITIES IS NOT SHOWN.
- 36. THE LOCATION OF EXISTING UTILITIES IS NOT SHOWN.
- 37. THE LOCATION OF EXISTING UTILITIES IS NOT SHOWN.
- 38. THE LOCATION OF EXISTING UTILITIES IS NOT SHOWN.
- 39. THE LOCATION OF EXISTING UTILITIES IS NOT SHOWN.
- 40. THE LOCATION OF EXISTING UTILITIES IS NOT SHOWN.
- 41. THE LOCATION OF EXISTING UTILITIES IS NOT SHOWN.
- 42. THE LOCATION OF EXISTING UTILITIES IS NOT SHOWN.
- 43. THE LOCATION OF EXISTING UTILITIES IS NOT SHOWN.
- 44. THE LOCATION OF EXISTING UTILITIES IS NOT SHOWN.
- 45. THE LOCATION OF EXISTING UTILITIES IS NOT SHOWN.
- 46. THE LOCATION OF EXISTING UTILITIES IS NOT SHOWN.
- 47. THE LOCATION OF EXISTING UTILITIES IS NOT SHOWN.
- 48. THE LOCATION OF EXISTING UTILITIES IS NOT SHOWN.
- 49. THE LOCATION OF EXISTING UTILITIES IS NOT SHOWN.
- 50. THE LOCATION OF EXISTING UTILITIES IS NOT SHOWN.
- 51. THE LOCATION OF EXISTING UTILITIES IS NOT SHOWN.
- 52. THE LOCATION OF EXISTING UTILITIES IS NOT SHOWN.
- 53. THE LOCATION OF EXISTING UTILITIES IS NOT SHOWN.
- 54. THE LOCATION OF EXISTING UTILITIES IS NOT SHOWN.
- 55. THE LOCATION OF EXISTING UTILITIES IS NOT SHOWN.
- 56. THE LOCATION OF EXISTING UTILITIES IS NOT SHOWN.
- 57. THE LOCATION OF EXISTING UTILITIES IS NOT SHOWN.
- 58. THE LOCATION OF EXISTING UTILITIES IS NOT SHOWN.
- 59. THE LOCATION OF EXISTING UTILITIES IS NOT SHOWN.
- 60. THE LOCATION OF EXISTING UTILITIES IS NOT SHOWN.
- 61. THE LOCATION OF EXISTING UTILITIES IS NOT SHOWN.
- 62. THE LOCATION OF EXISTING UTILITIES IS NOT SHOWN.
- 63. THE LOCATION OF EXISTING UTILITIES IS NOT SHOWN.
- 64. THE LOCATION OF EXISTING UTILITIES IS NOT SHOWN.
- 65. THE LOCATION OF EXISTING UTILITIES IS NOT SHOWN.
- 66. THE LOCATION OF EXISTING UTILITIES IS NOT SHOWN.
- 67. THE LOCATION OF EXISTING UTILITIES IS NOT SHOWN.
- 68. THE LOCATION OF EXISTING UTILITIES IS NOT SHOWN.
- 69. THE LOCATION OF EXISTING UTILITIES IS NOT SHOWN.
- 70. THE LOCATION OF EXISTING UTILITIES IS NOT SHOWN.
- 71. THE LOCATION OF EXISTING UTILITIES IS NOT SHOWN.
- 72. THE LOCATION OF EXISTING UTILITIES IS NOT SHOWN.
- 73. THE LOCATION OF EXISTING UTILITIES IS NOT SHOWN.
- 74. THE LOCATION OF EXISTING UTILITIES IS NOT SHOWN.
- 75. THE LOCATION OF EXISTING UTILITIES IS NOT SHOWN.
- 76. THE LOCATION OF EXISTING UTILITIES IS NOT SHOWN.
- 77. THE LOCATION OF EXISTING UTILITIES IS NOT SHOWN.
- 78. THE LOCATION OF EXISTING UTILITIES IS NOT SHOWN.
- 79. THE LOCATION OF EXISTING UTILITIES IS NOT SHOWN.
- 80. THE LOCATION OF EXISTING UTILITIES IS NOT SHOWN.
- 81. THE LOCATION OF EXISTING UTILITIES IS NOT SHOWN.
- 82. THE LOCATION OF EXISTING UTILITIES IS NOT SHOWN.
- 83. THE LOCATION OF EXISTING UTILITIES IS NOT SHOWN.
- 84. THE LOCATION OF EXISTING UTILITIES IS NOT SHOWN.
- 85. THE LOCATION OF EXISTING UTILITIES IS NOT SHOWN.
- 86. THE LOCATION OF EXISTING UTILITIES IS NOT SHOWN.
- 87. THE LOCATION OF EXISTING UTILITIES IS NOT SHOWN.
- 88. THE LOCATION OF EXISTING UTILITIES IS NOT SHOWN.
- 89. THE LOCATION OF EXISTING UTILITIES IS NOT SHOWN.
- 90. THE LOCATION OF EXISTING UTILITIES IS NOT SHOWN.
- 91. THE LOCATION OF EXISTING UTILITIES IS NOT SHOWN.
- 92. THE LOCATION OF EXISTING UTILITIES IS NOT SHOWN.
- 93. THE LOCATION OF EXISTING UTILITIES IS NOT SHOWN.
- 94. THE LOCATION OF EXISTING UTILITIES IS NOT SHOWN.
- 95. THE LOCATION OF EXISTING UTILITIES IS NOT SHOWN.
- 96. THE LOCATION OF EXISTING UTILITIES IS NOT SHOWN.
- 97. THE LOCATION OF EXISTING UTILITIES IS NOT SHOWN.
- 98. THE LOCATION OF EXISTING UTILITIES IS NOT SHOWN.
- 99. THE LOCATION OF EXISTING UTILITIES IS NOT SHOWN.
- 100. THE LOCATION OF EXISTING UTILITIES IS NOT SHOWN.



proposal

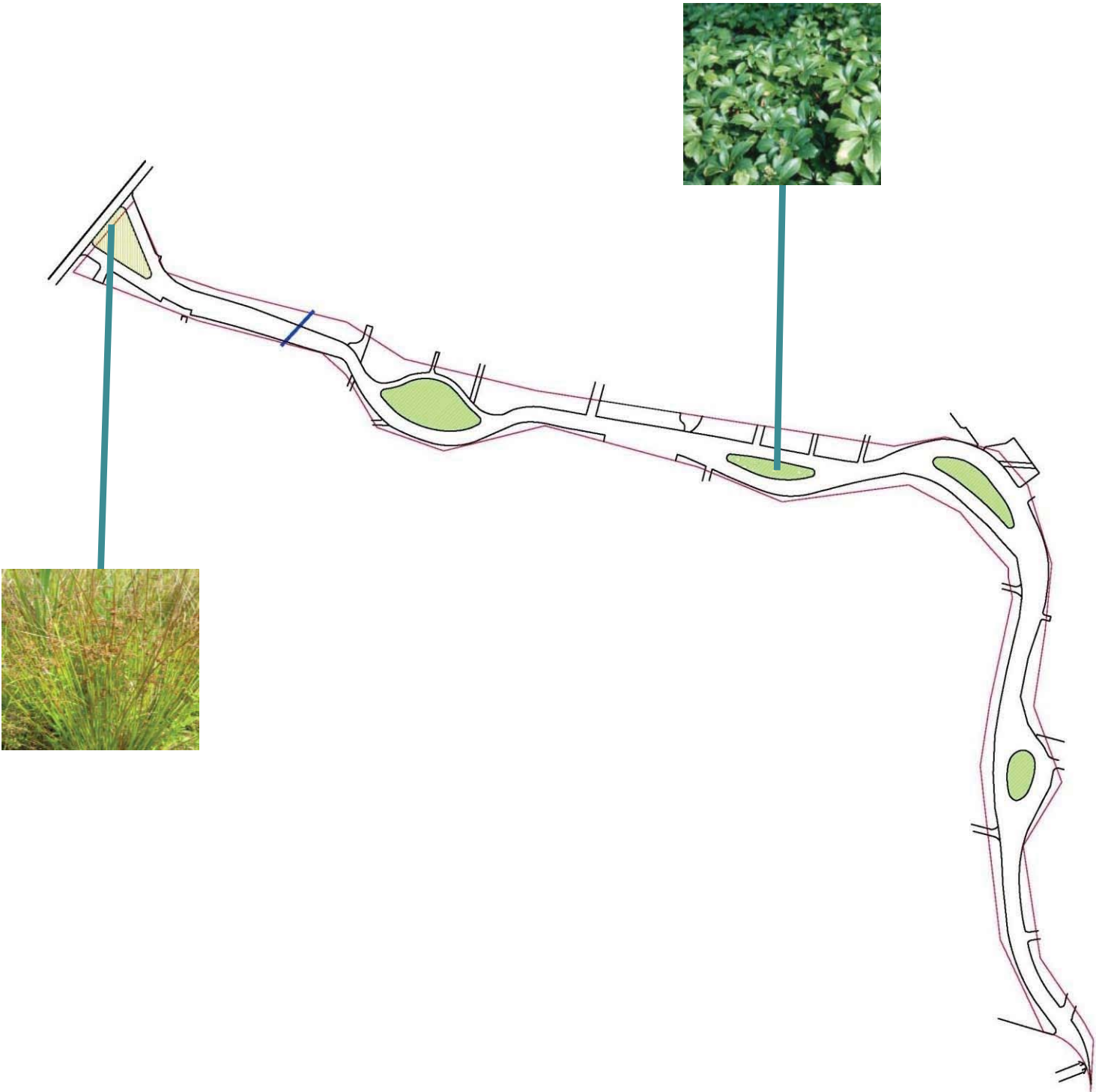
composite illustrative plan



concrete path surface



planting



seating/signs/blue phone

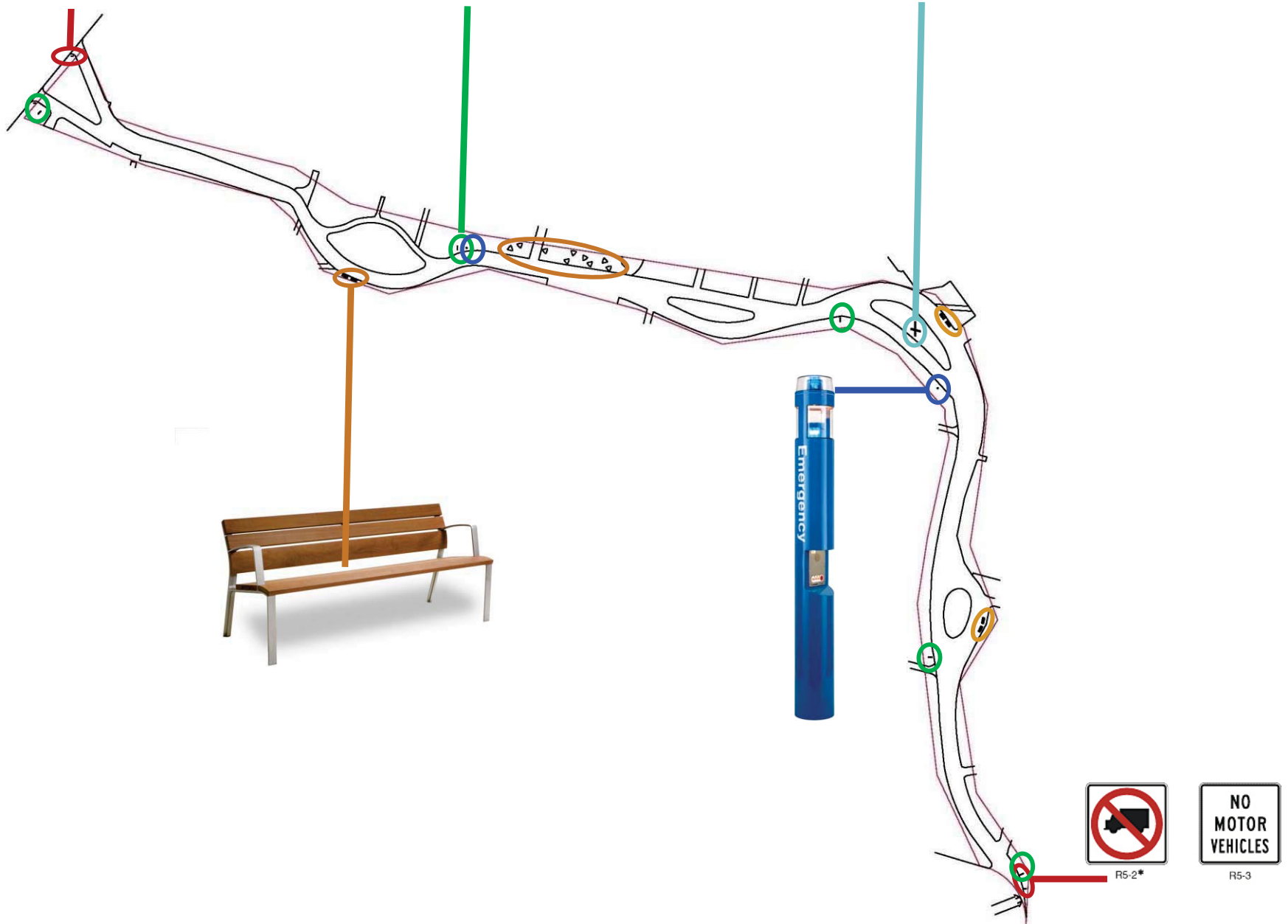


R5-2*



R5-3

way-finding sign informational sign



R5-2*



R5-3

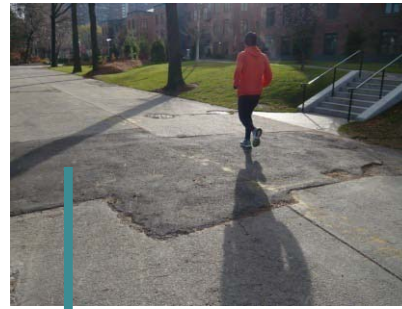
composite illustrative plan



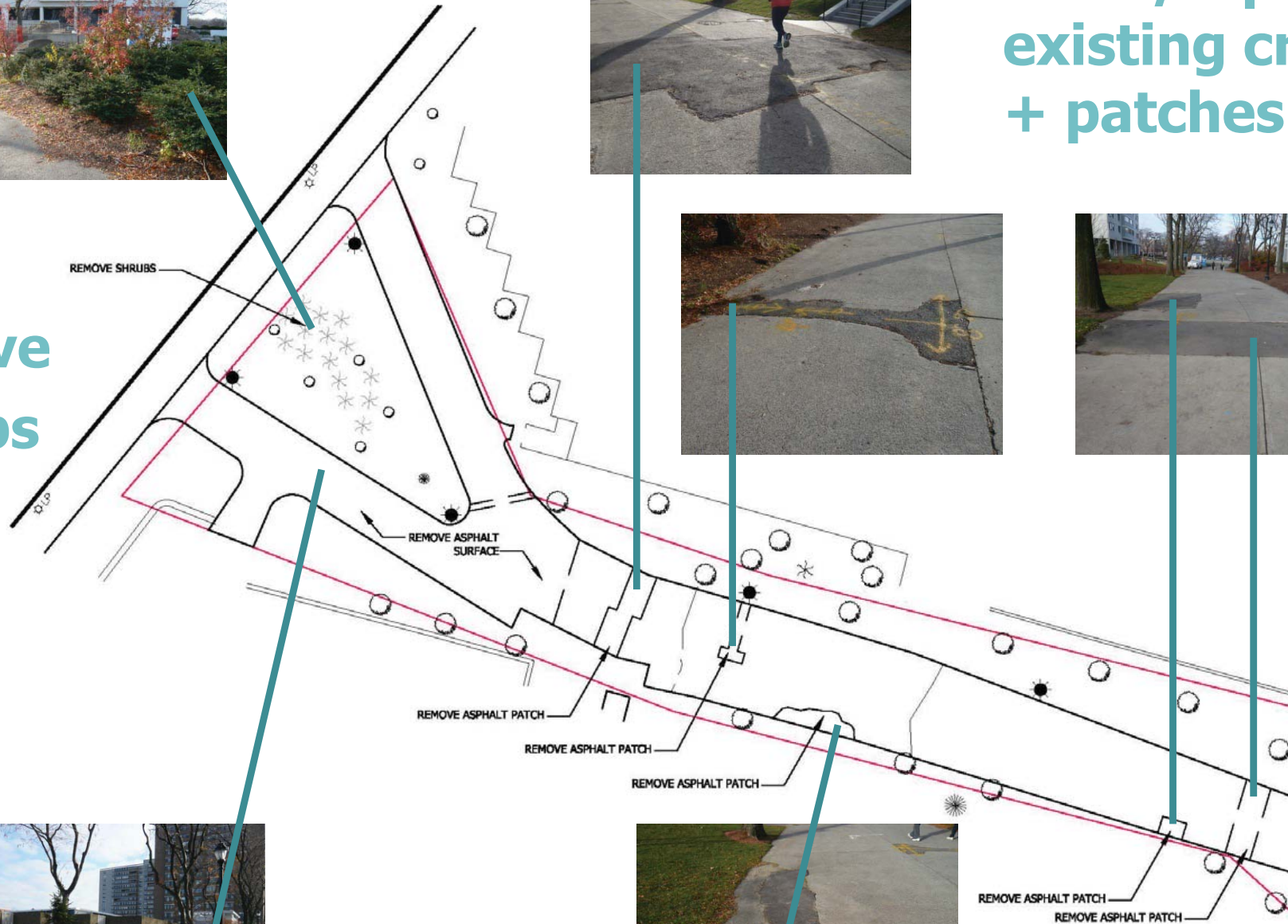
existing/demolition



remove shrubs

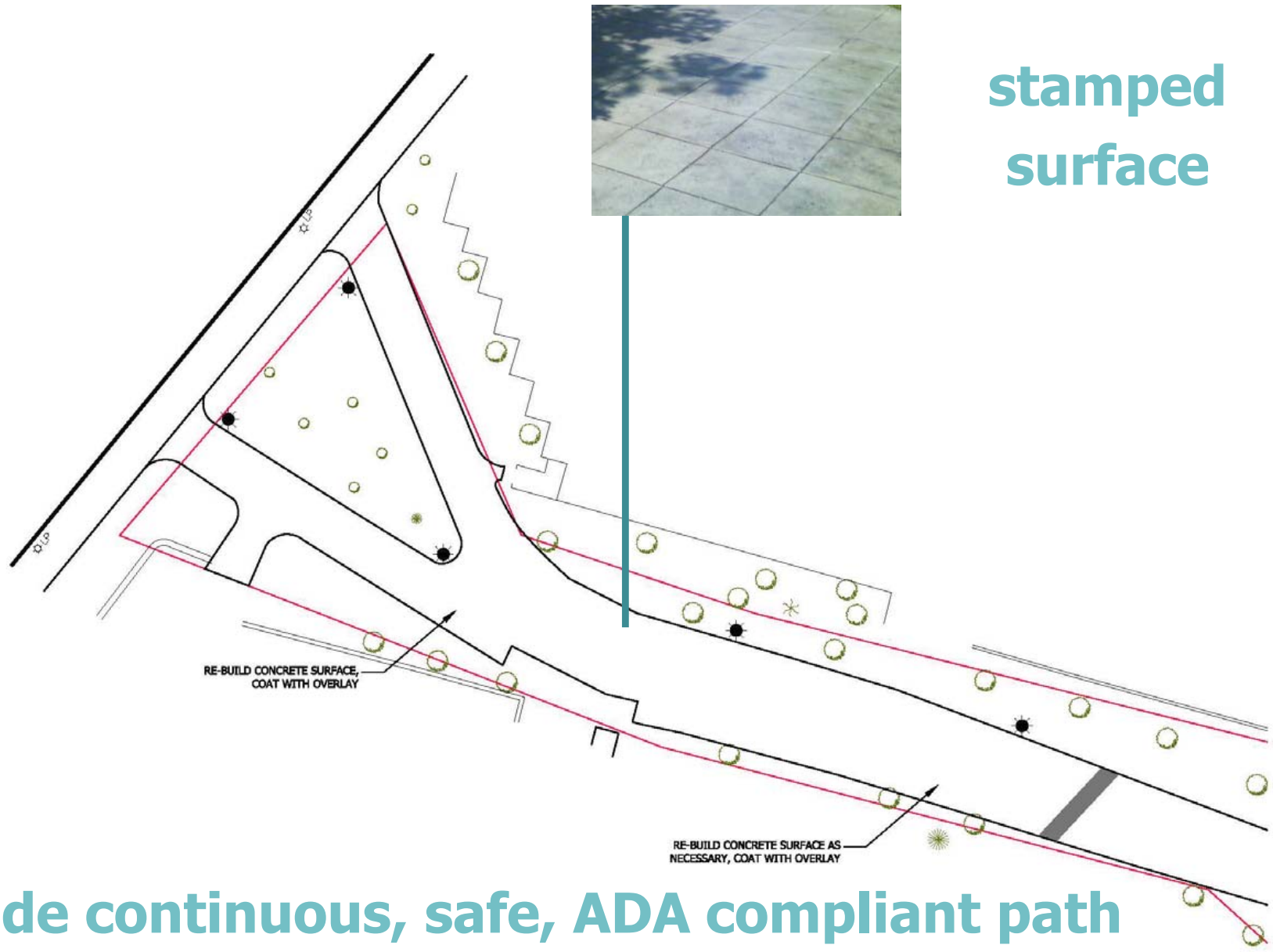


remove/repair all existing cracks + patches



REMOVE ASPHALT PATCH
REMOVE ASPHALT PATCH

proposed surface

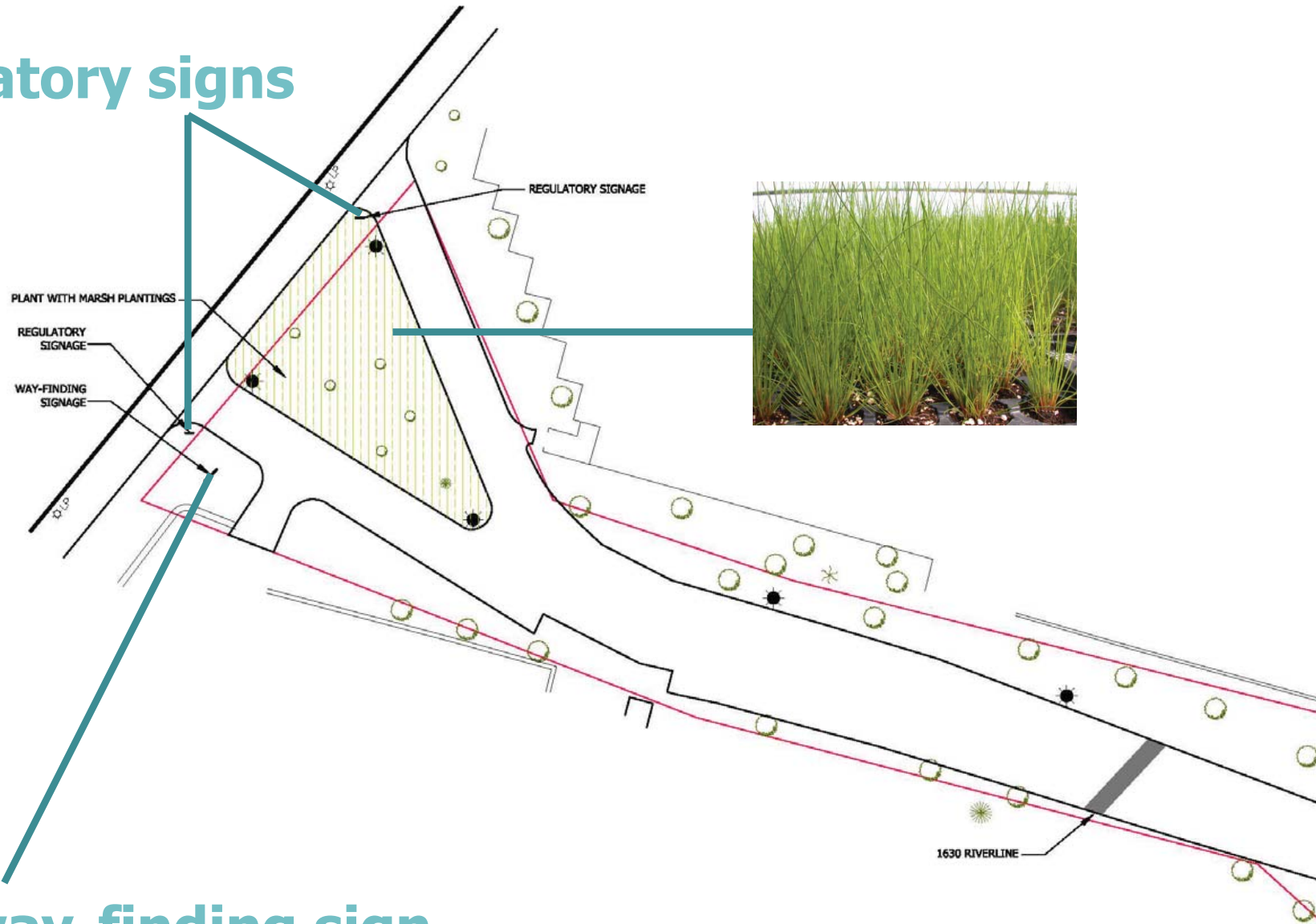


stamped
surface

**provide continuous, safe, ADA compliant path
achieved by demolishing select parts of the path,
rebuilding the path and overlaying new material**

proposed planting/benches/signs/blue phones

regulatory signs



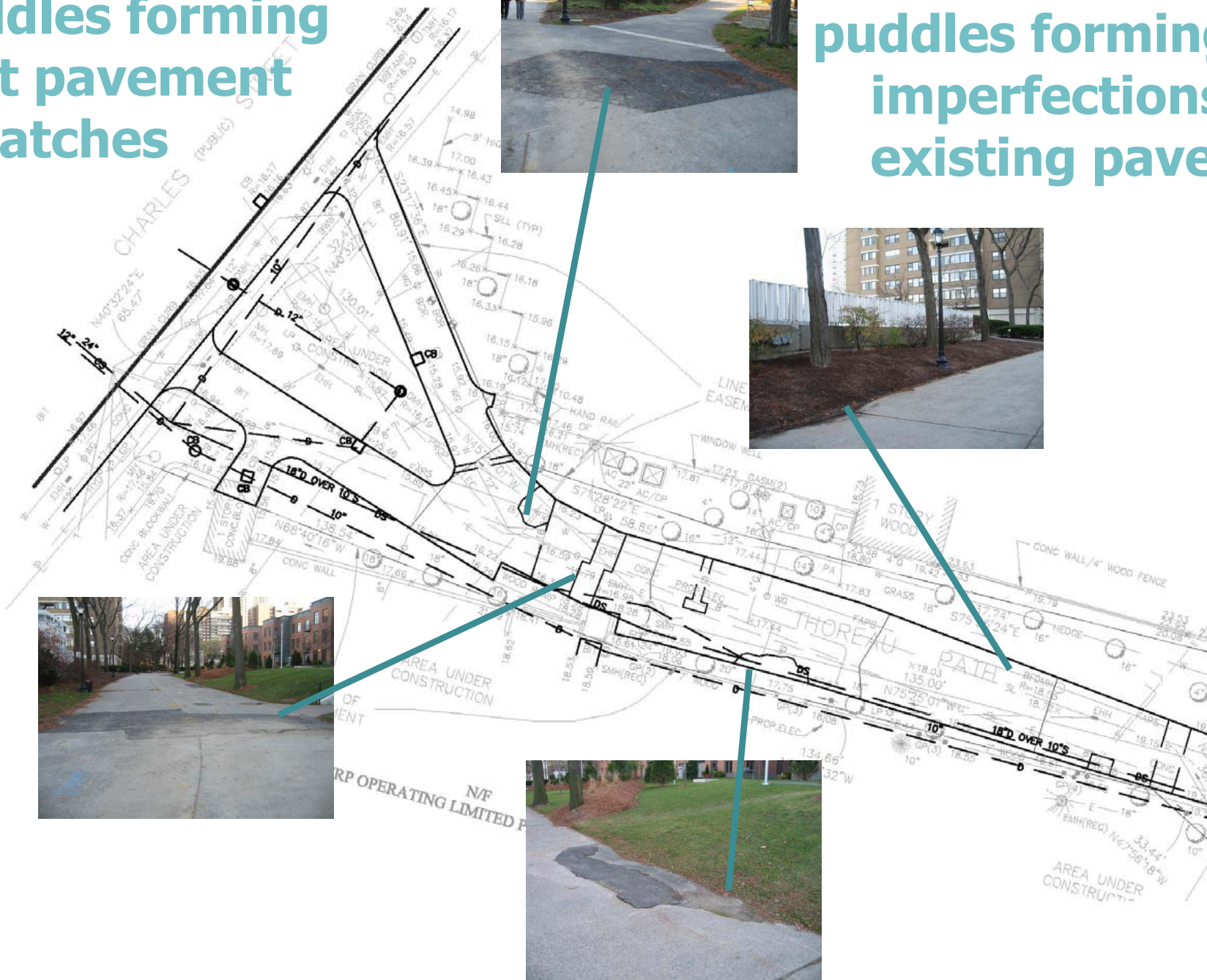
way-finding sign

existing drainage issues

puddles forming at pavement patches



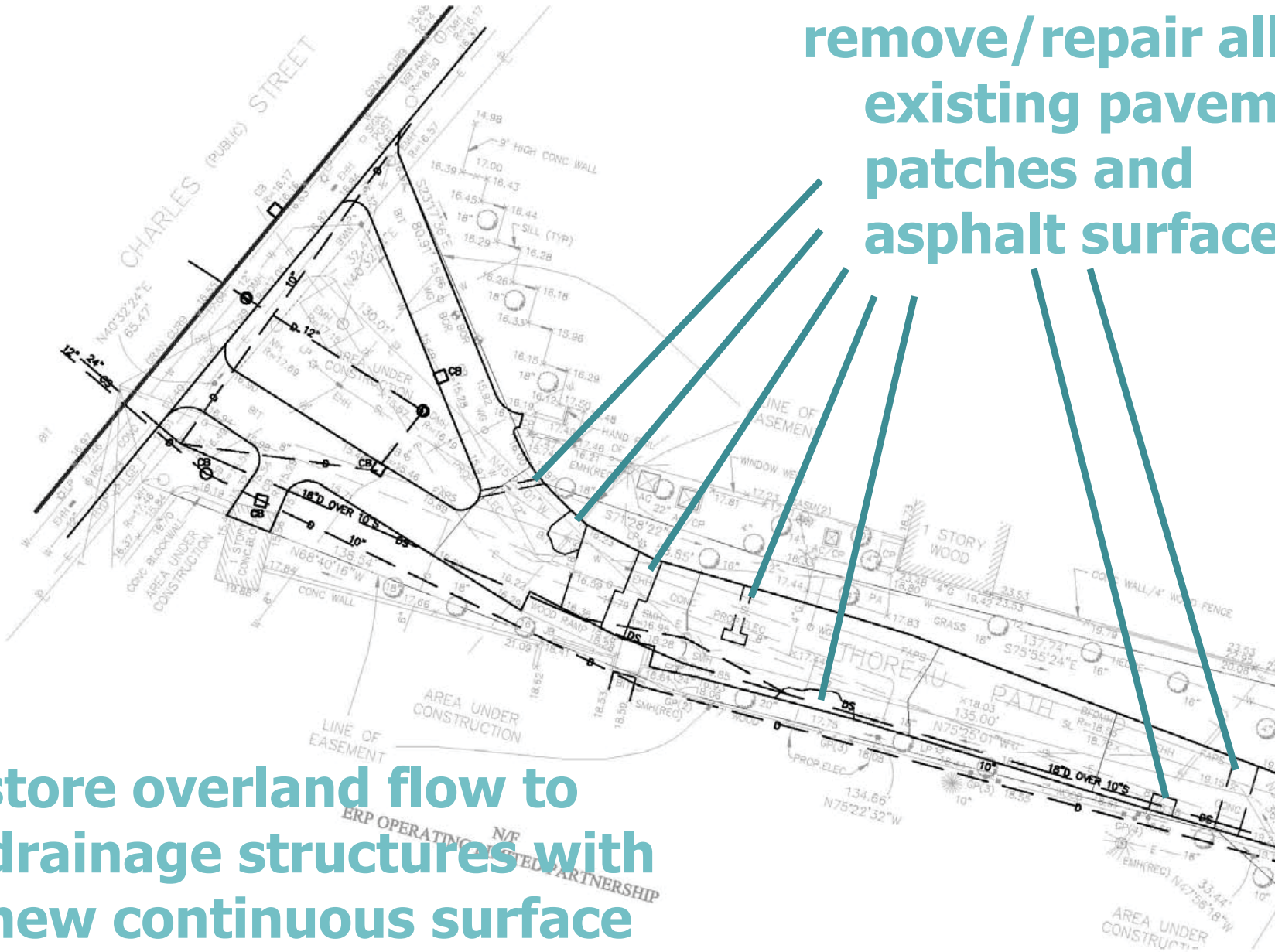
puddles forming at imperfections in existing pavement



proposed drainage solutions

remove/repair all existing pavement patches and asphalt surfaces

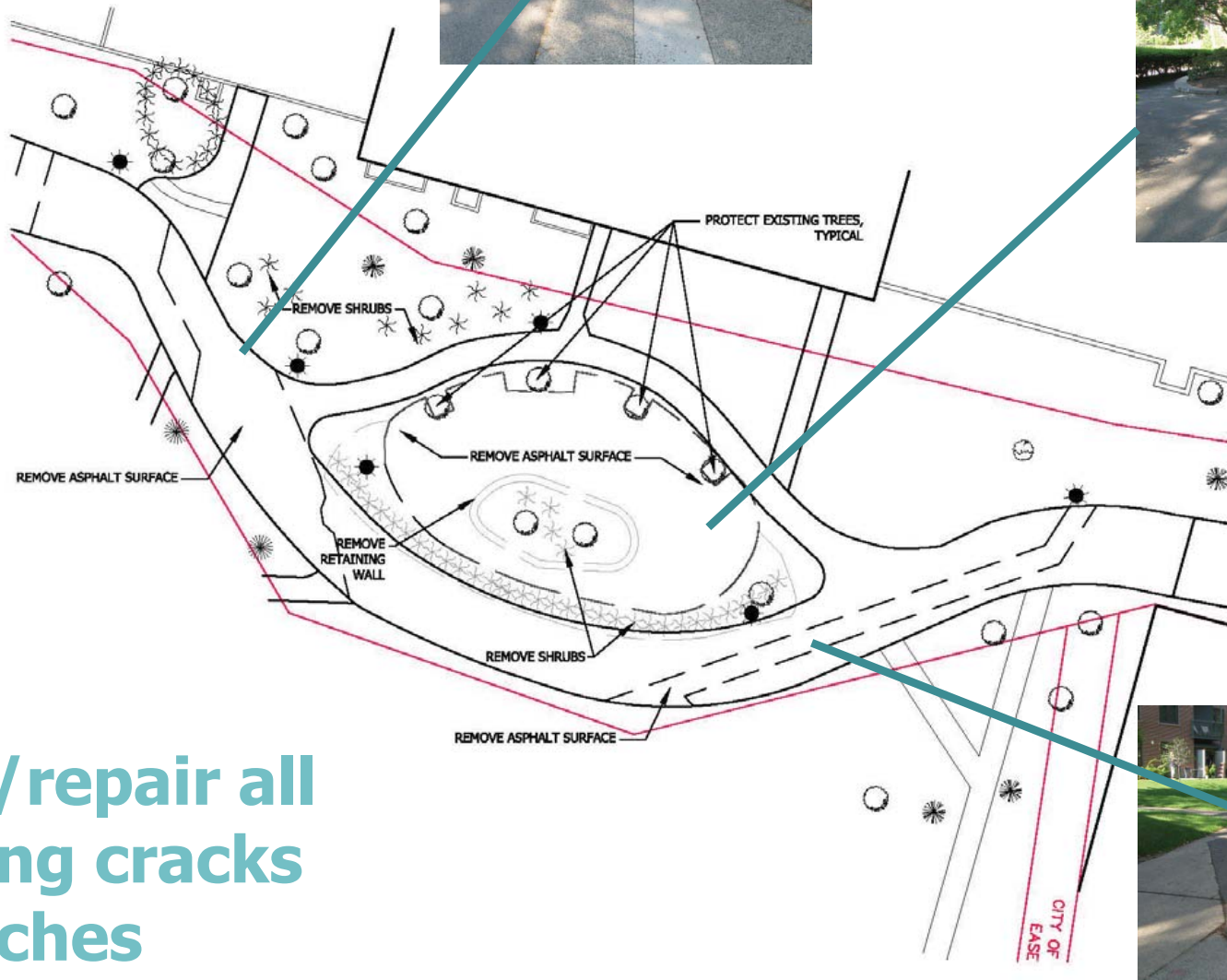
restore overland flow to drainage structures with new continuous surface



existing/demolition

protect all existing trees

remove shrubs



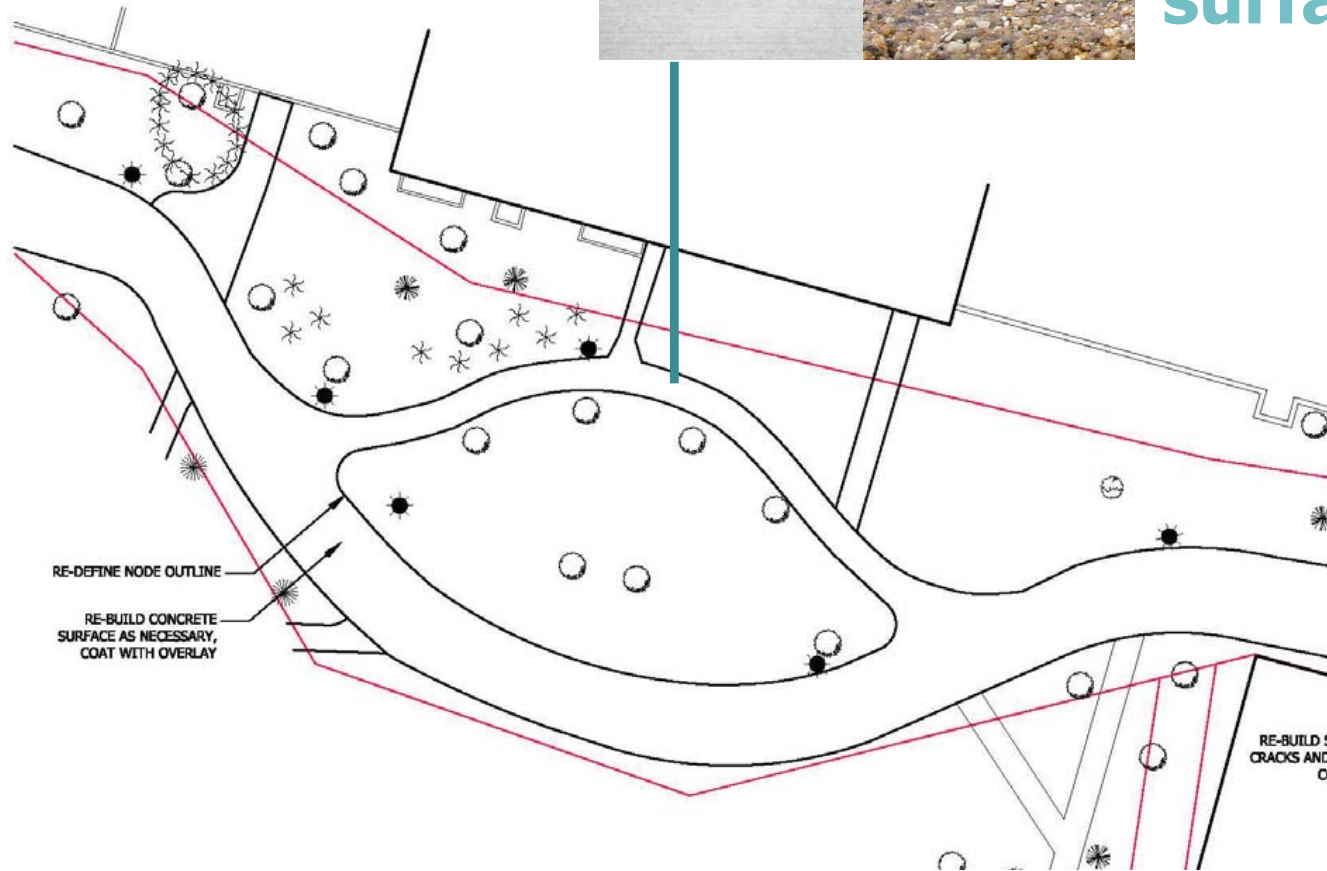
remove/repair all existing cracks + patches



proposed surface

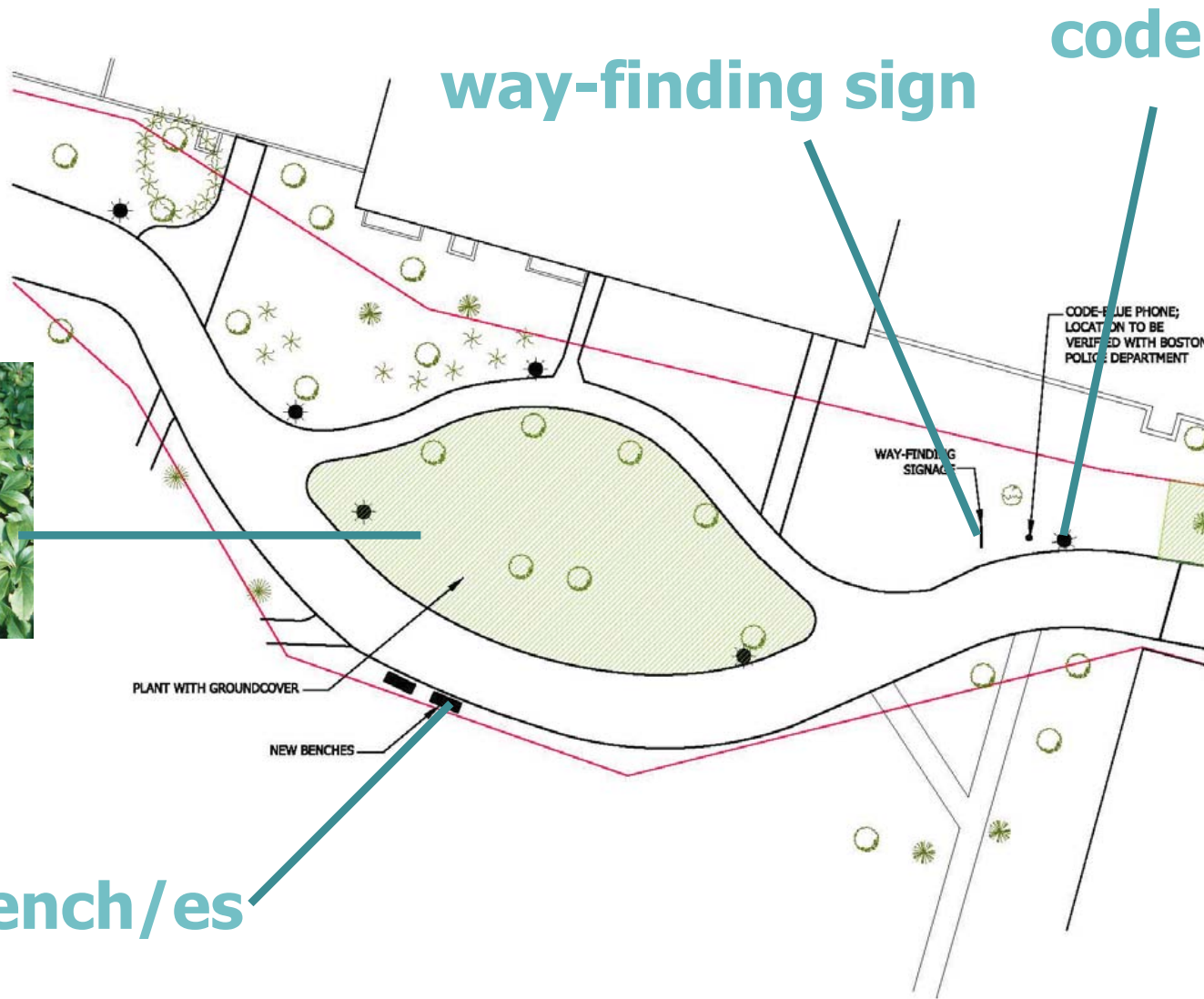


textured
surface



provide continuous, safe, ADA compliant path
achieved by demolishing select parts of the path,
rebuilding the path and overlaying new material

proposed planting/benches/signs/blue phones

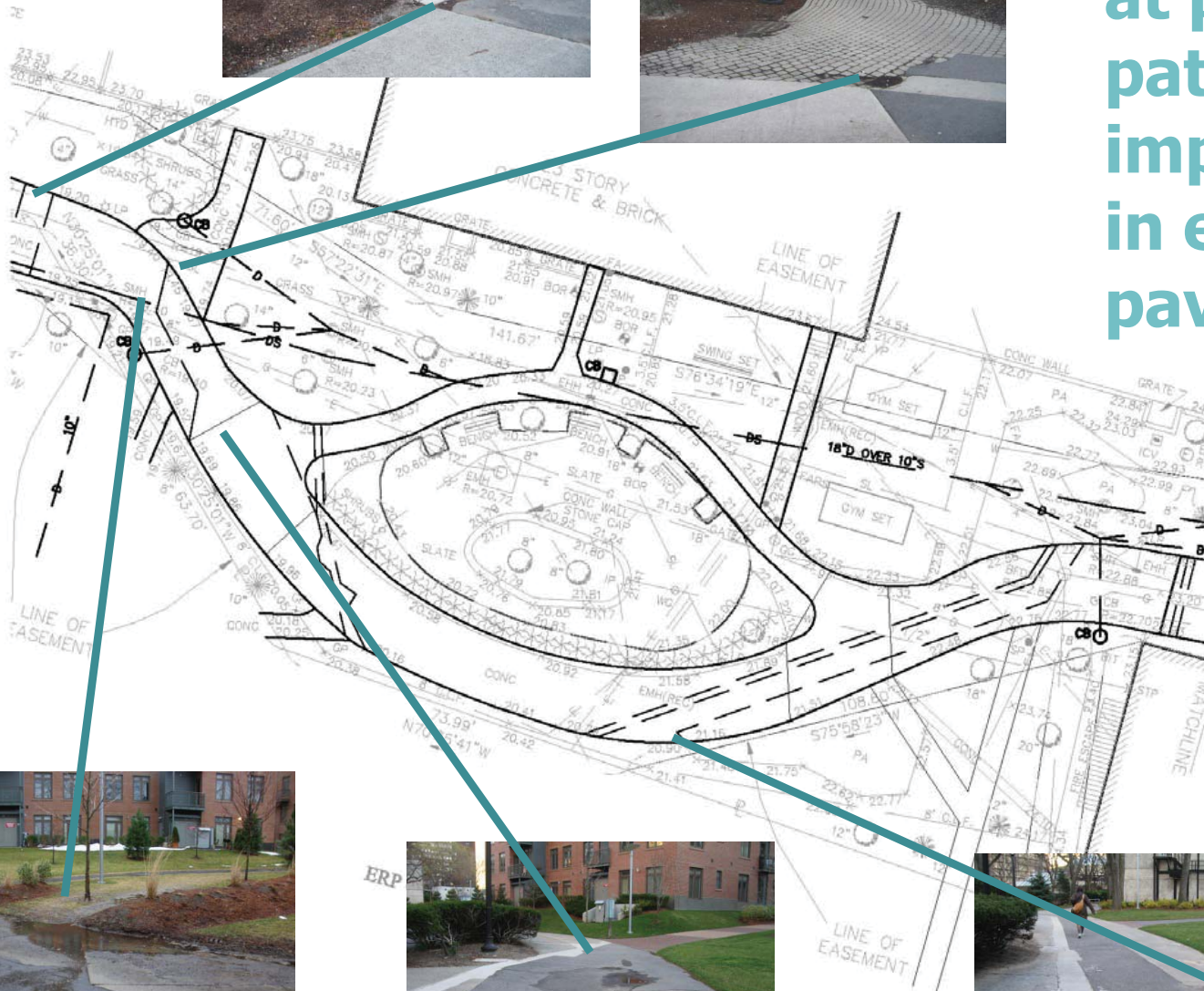


new bench/es

existing drainage issues

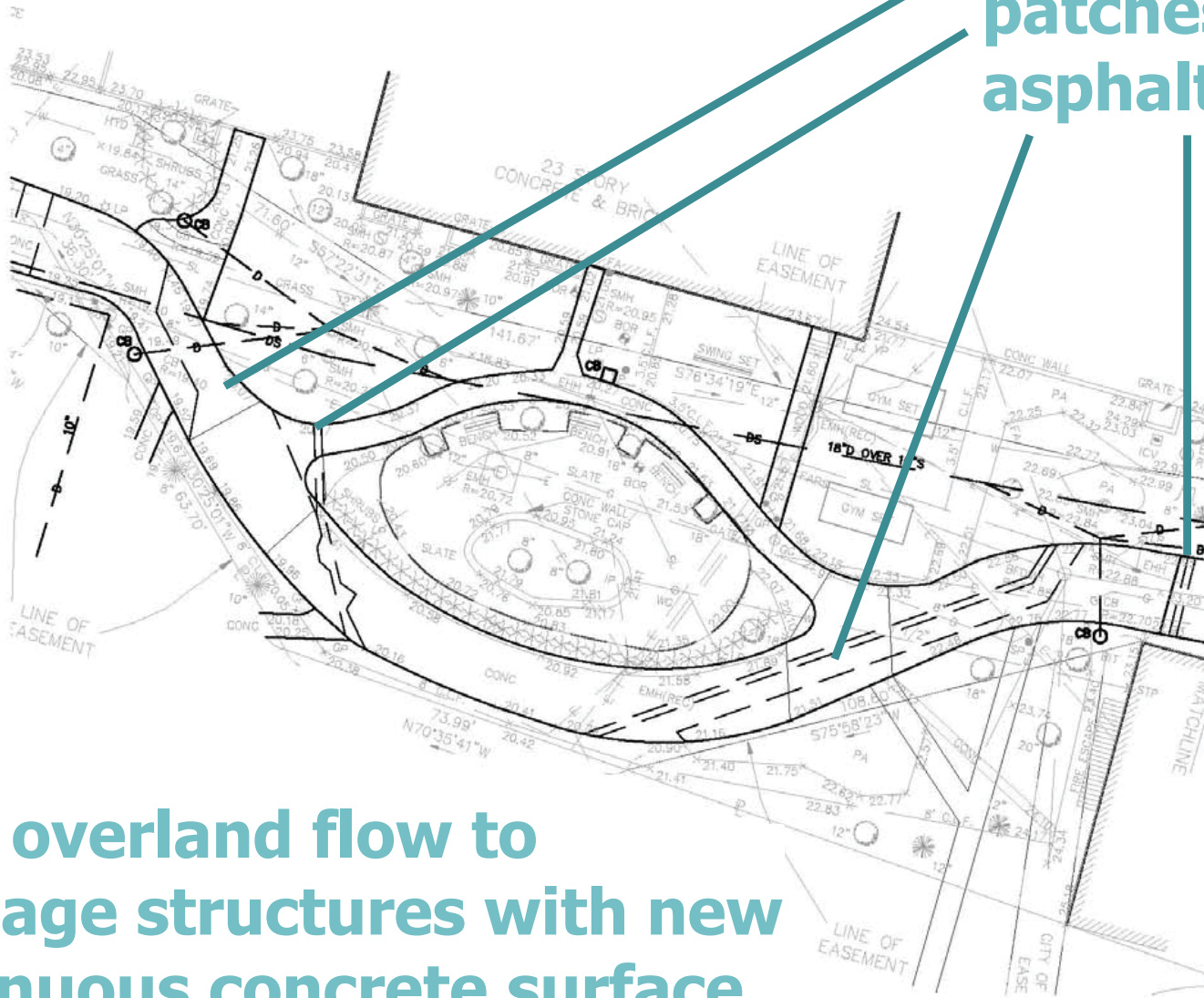


puddles forming at pavement patches and imperfections in existing pavement



proposed drainage solutions

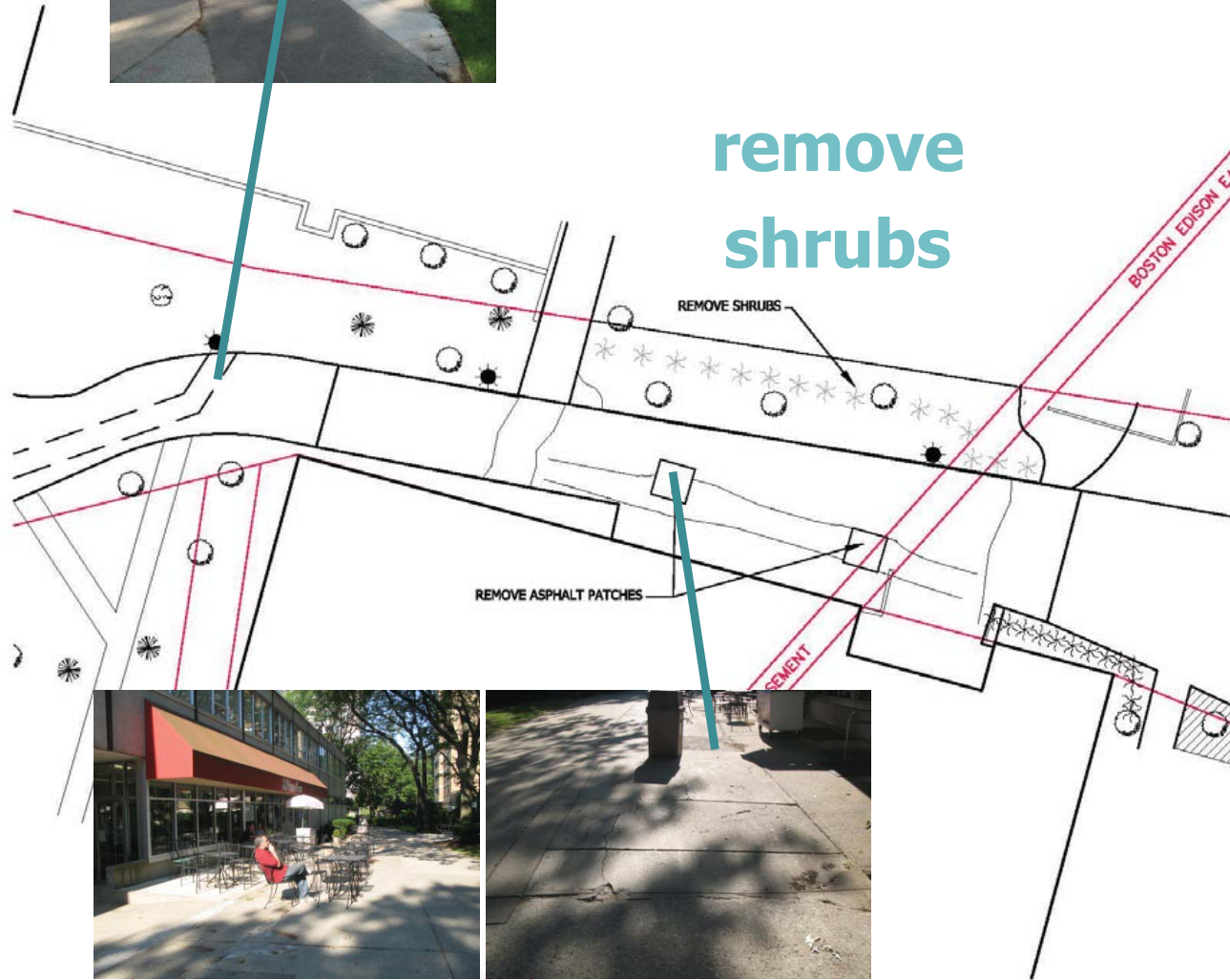
remove/repair all
existing pavement
patches and
asphalt surfaces



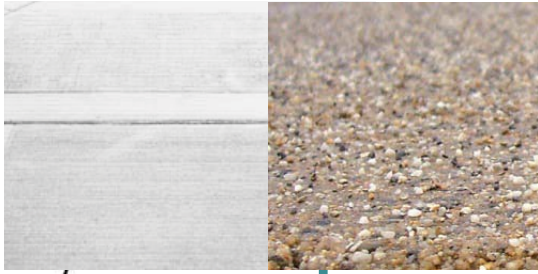
restore overland flow to
drainage structures with new
continuous concrete surface
and adjusted rim elevations

existing/demolition

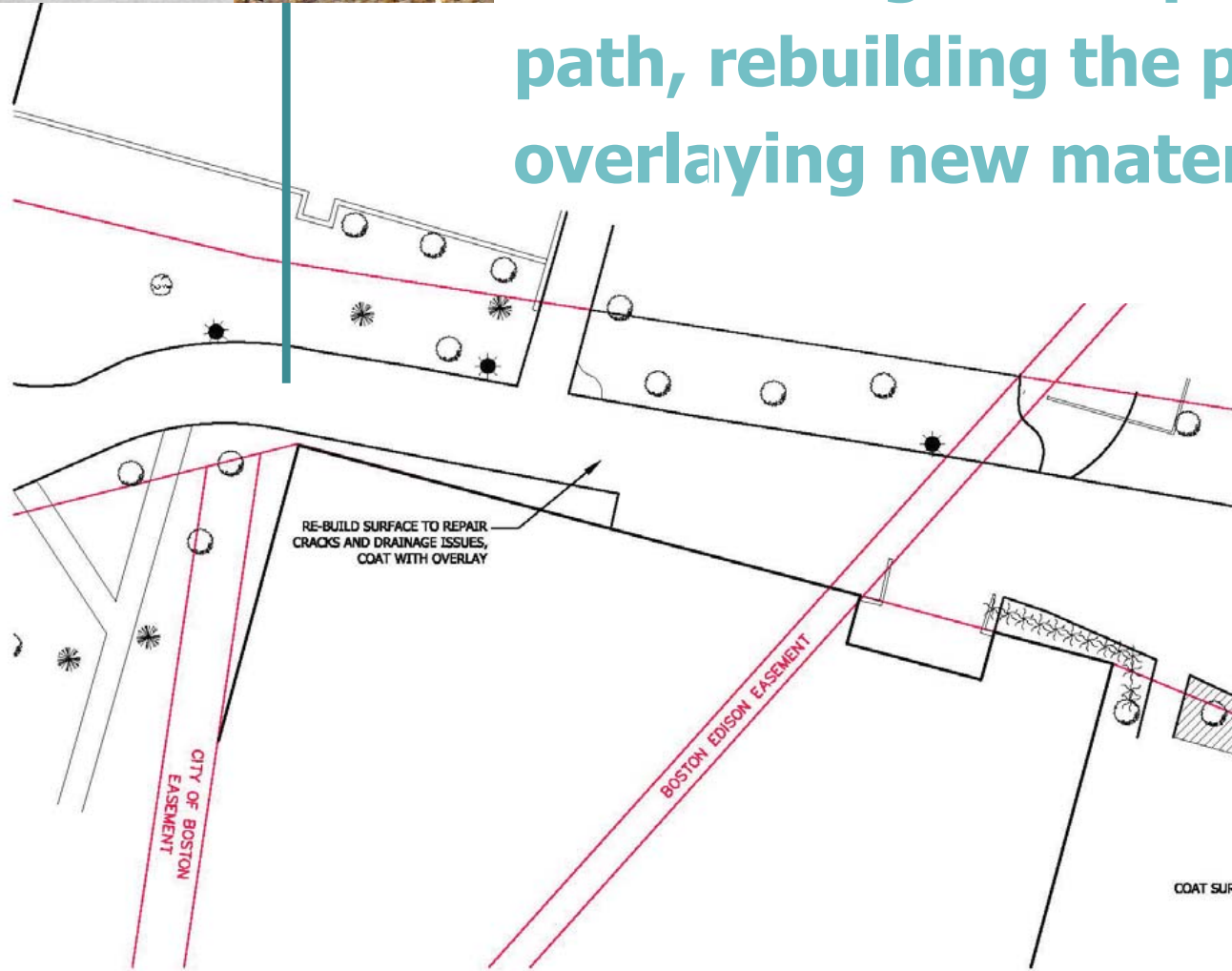
remove/repair all
existing cracks
+ patches



proposed textured surface



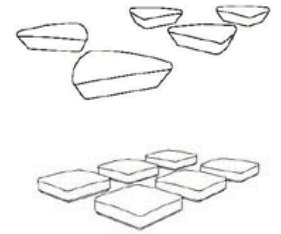
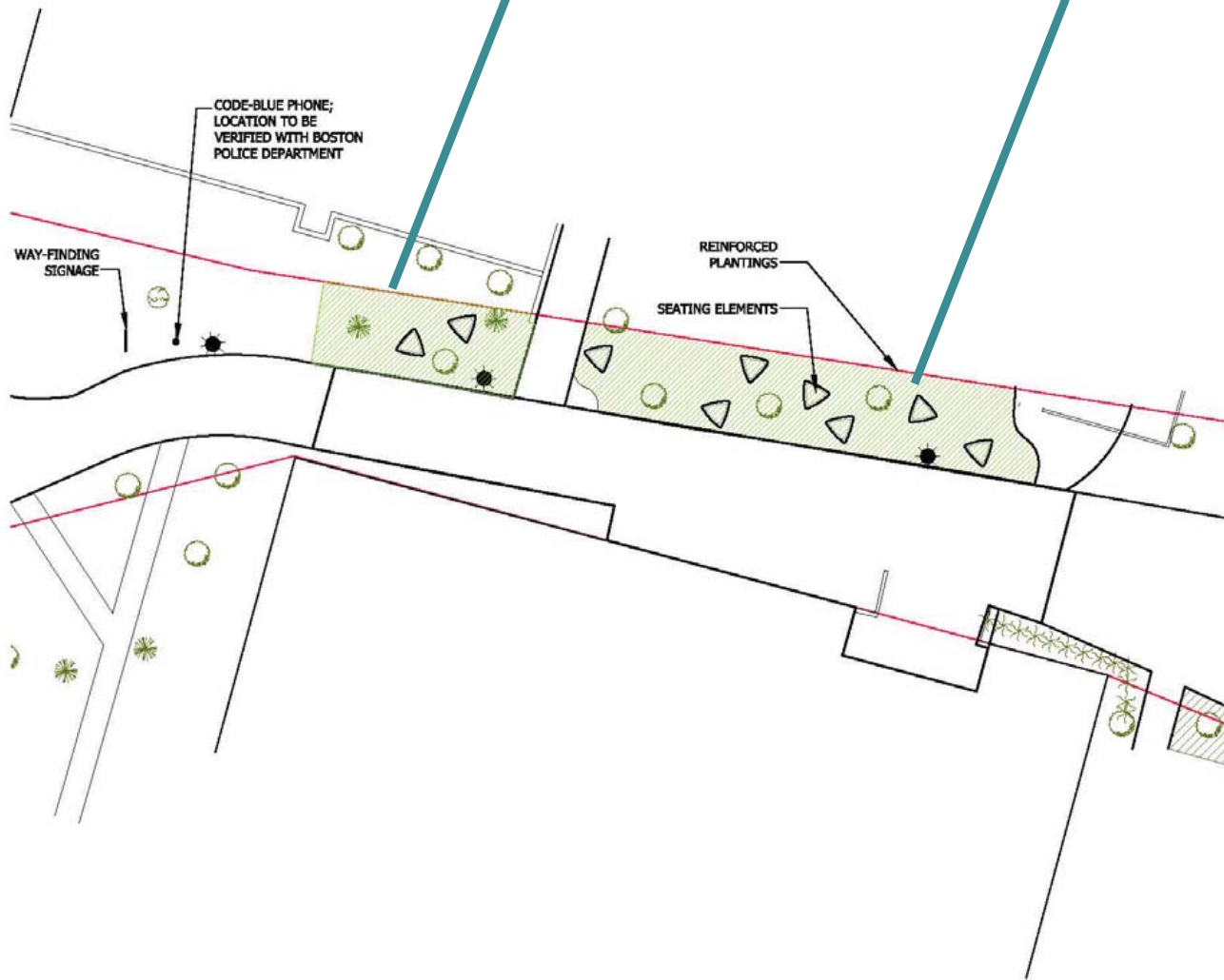
provide continuous, safe, ADA compliant path achieved by demolishing select parts of the path, rebuilding the path and overlaying new material



proposed planting/benches/signs/blue phones

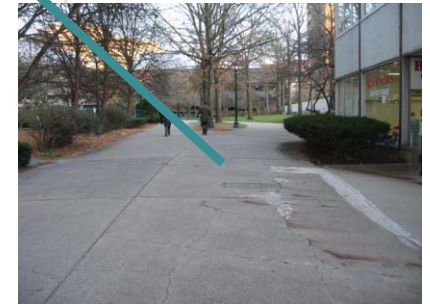
plantings

seating elements



existing drainage issues

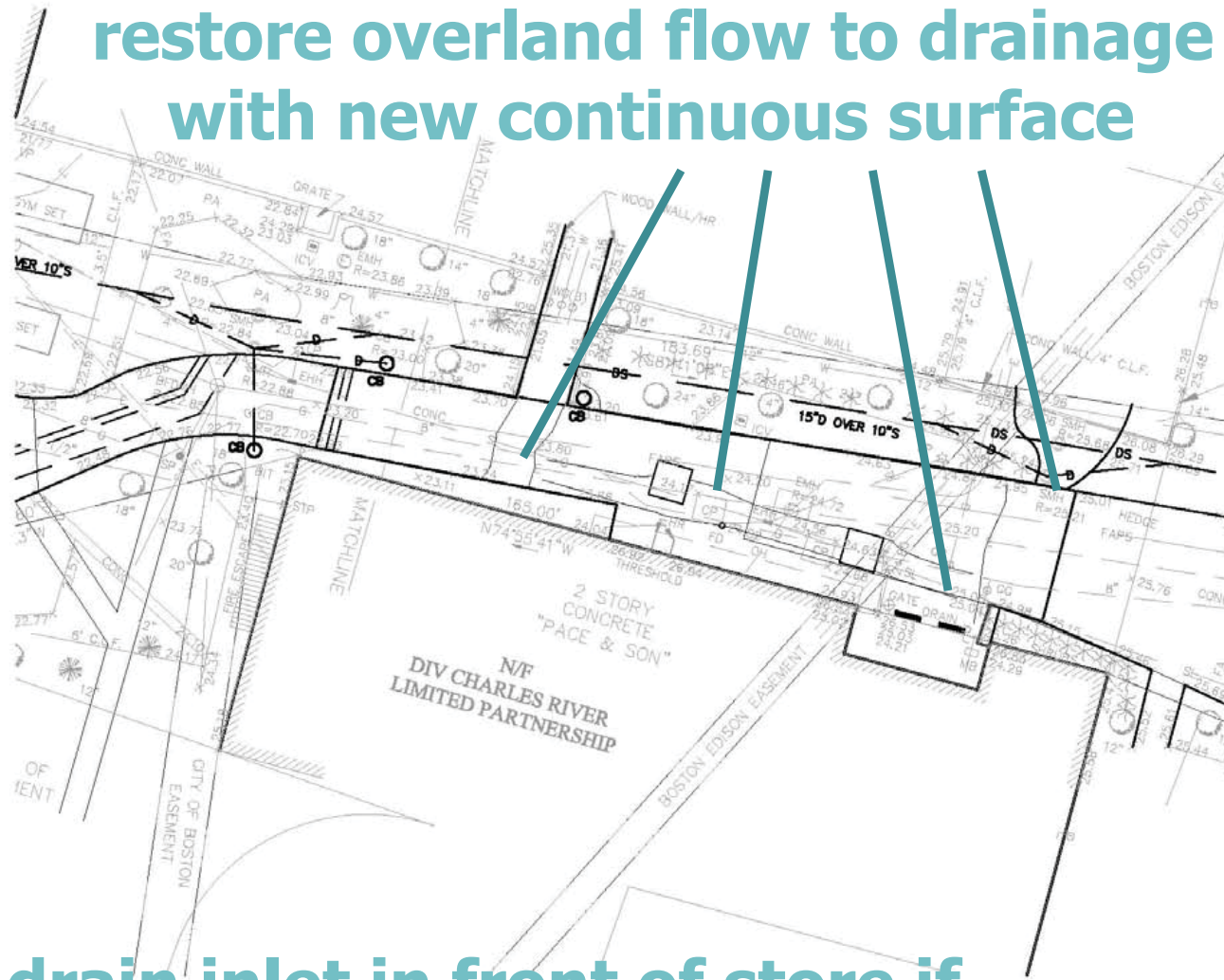
puddles forming at
pavement patches and
cracks in pavement



proposed drainage solutions

remove/repair all existing pavement patches and cracks

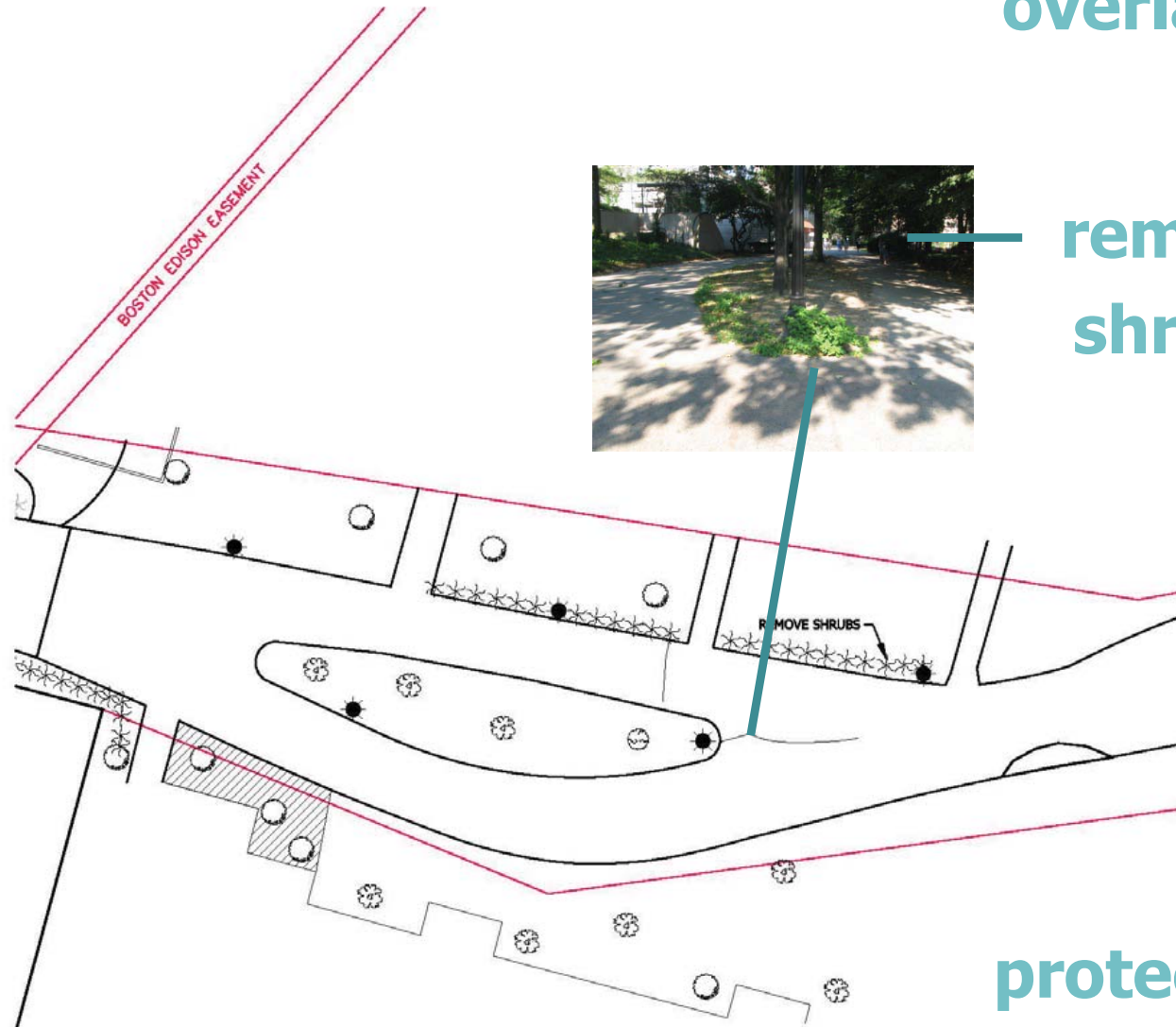
restore overland flow to drainage structures with new continuous surface



add new drain inlet in front of store if necessary depending on flow length

existing/demolition

repair cracks with
overlay surface



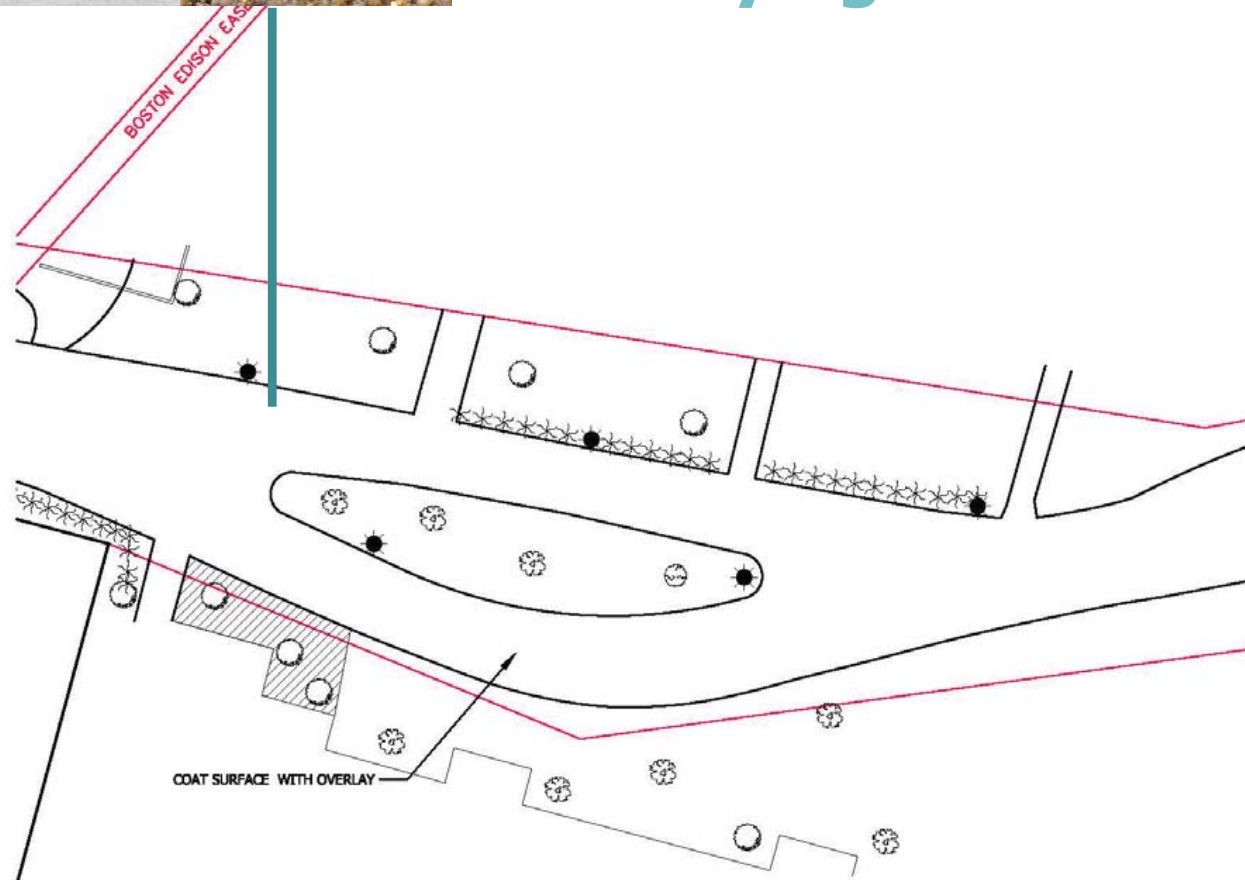
remove
shrubs

protect all
existing trees

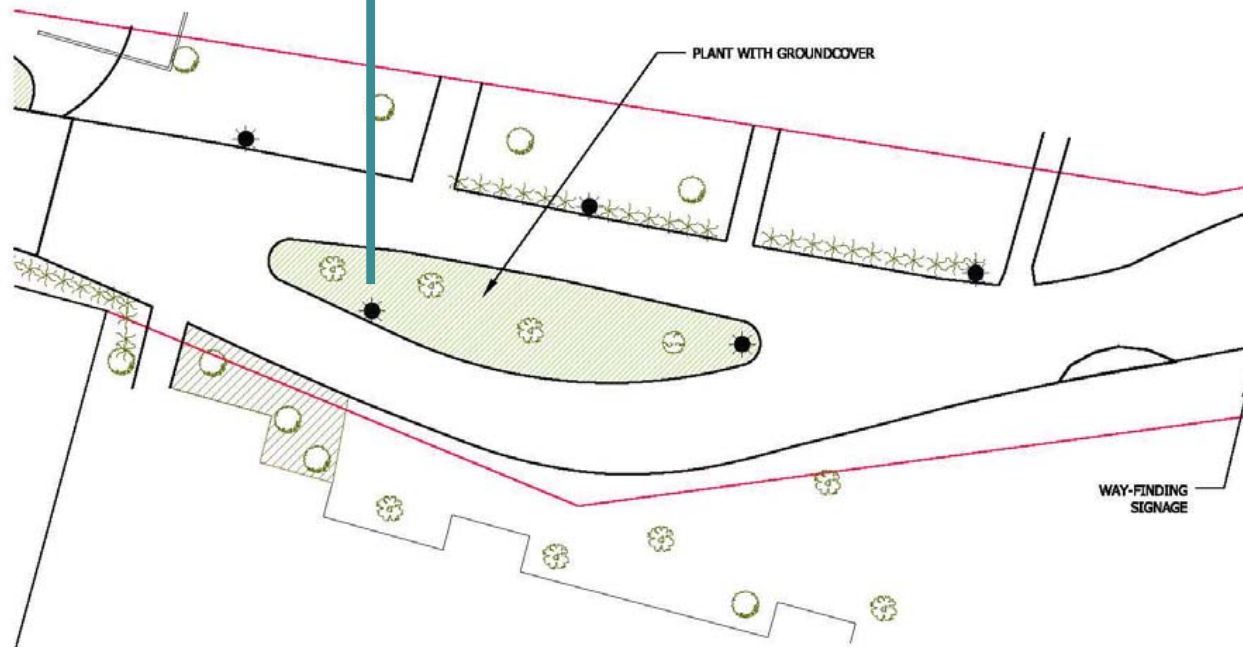
proposed textured surface



provide continuous, safe, ADA compliant path achieved by overlaying new material



proposed planting/benches/signs/blue phones



way-finding sign

existing drainage issues

puddles forming where runoff cannot drain to landscaping



large puddle forming where existing grades are very shallow

puddles forming at imperfections in existing pavement

proposed drainage solutions

regrade
landscape
edge to
allow runoff
to drain to
landscaping



remove/repair all existing
pavement cracks and
imperfections

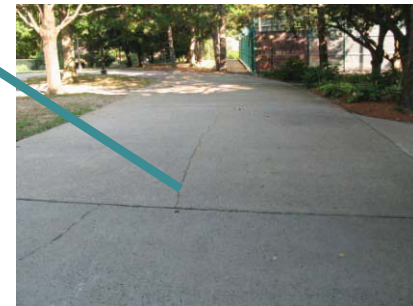
add new drain inlet if
necessary depending
on flow length and
slope to existing inlet

existing/demolition

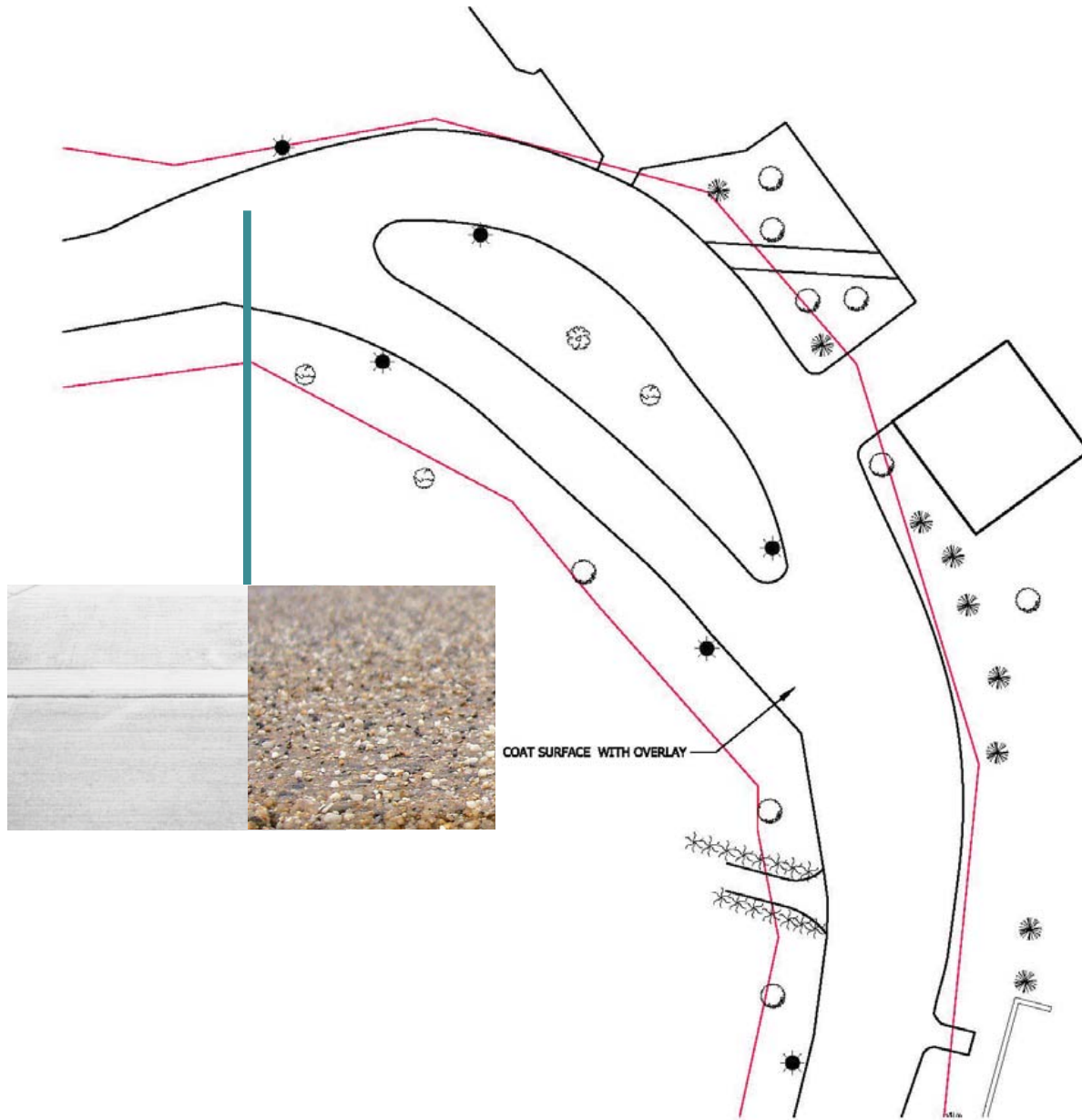
repair cracks with overlay surface

remove cut-through path

protect all existing trees

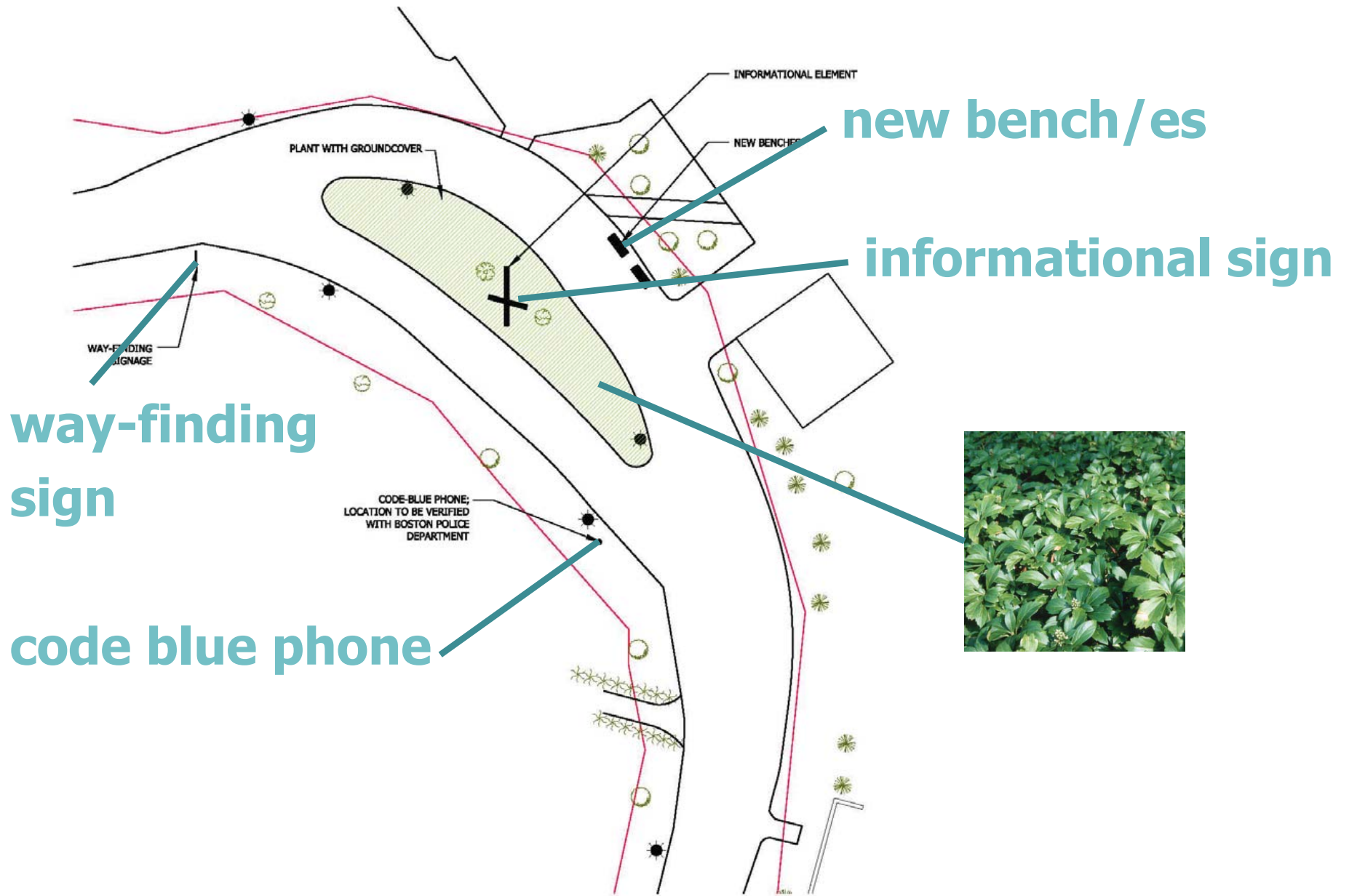


proposed textured surface



**provide continuous,
safe, ADA compliant
path achieved by
overlaying new
material**

proposed planting/benches/signs/blue phones



existing drainage issues

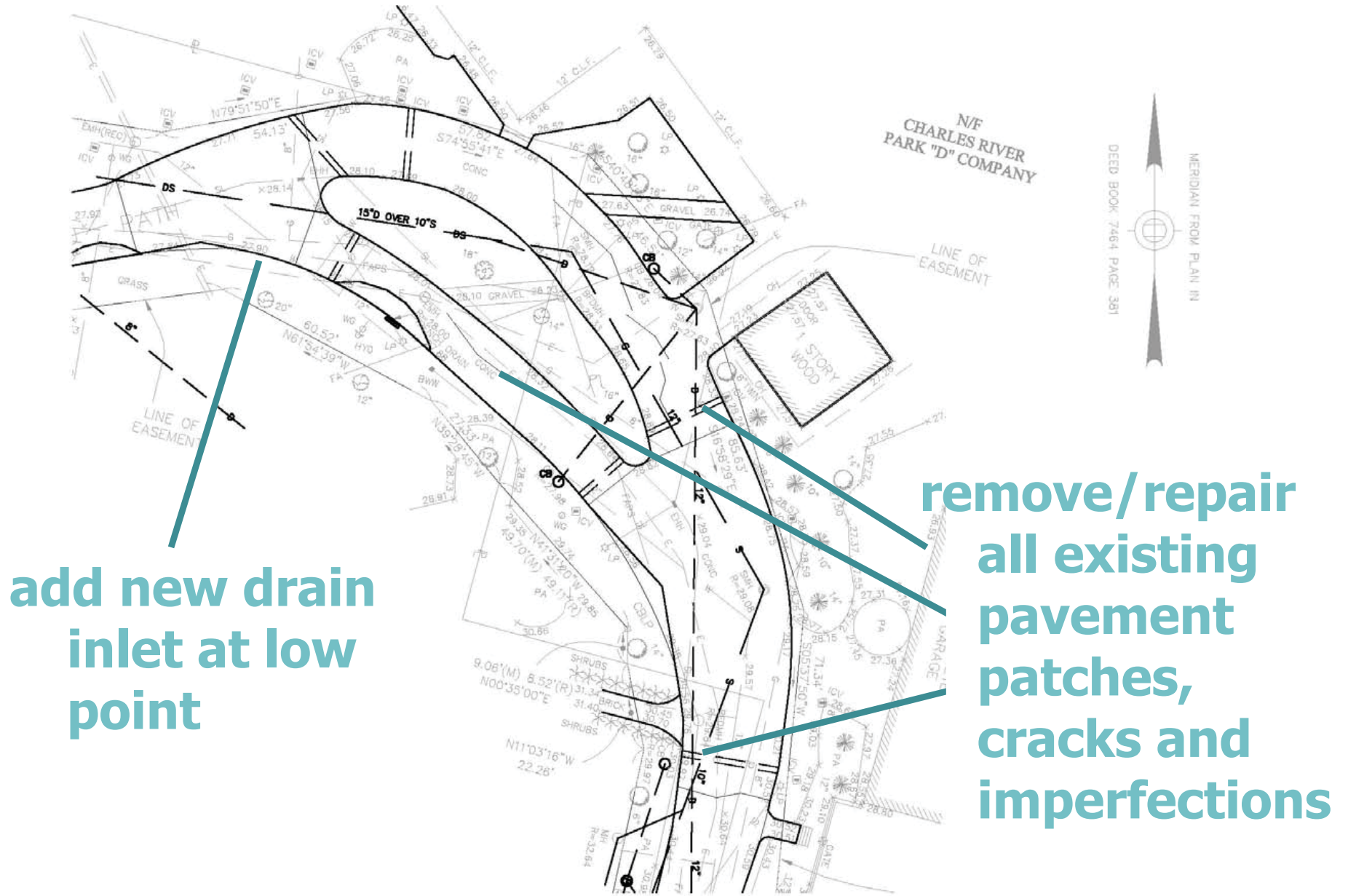
large puddle forming where existing grades indicate a low point

existing trench drain as noted on survey can not be located upon visual inspection

puddles forming at imperfections in existing pavement



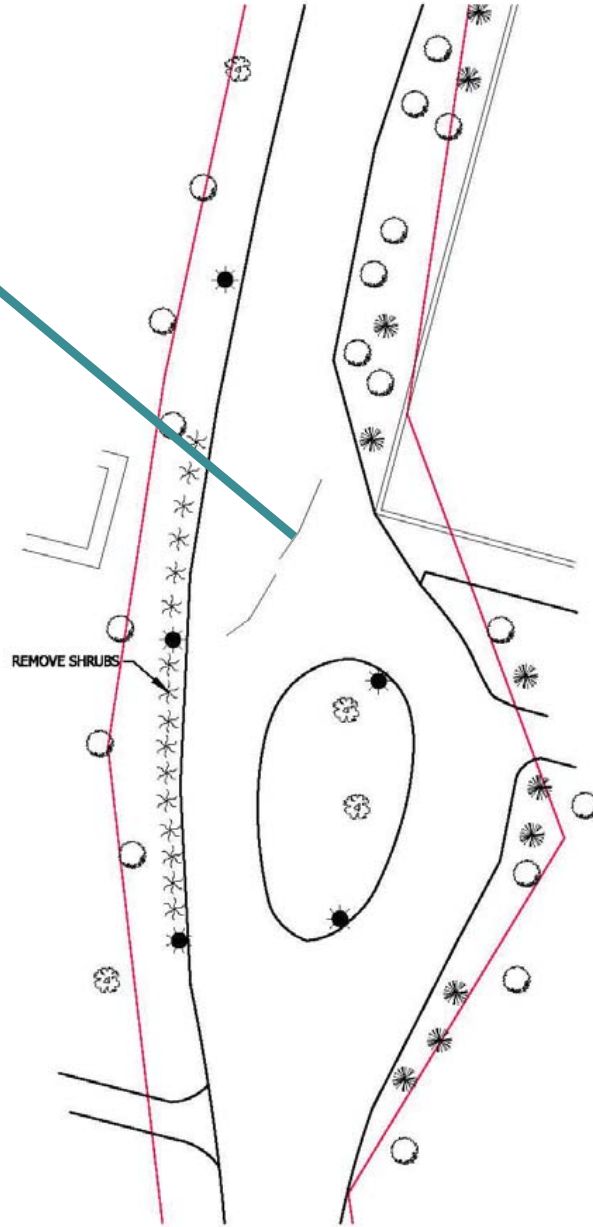
proposed drainage solutions



existing/demolition



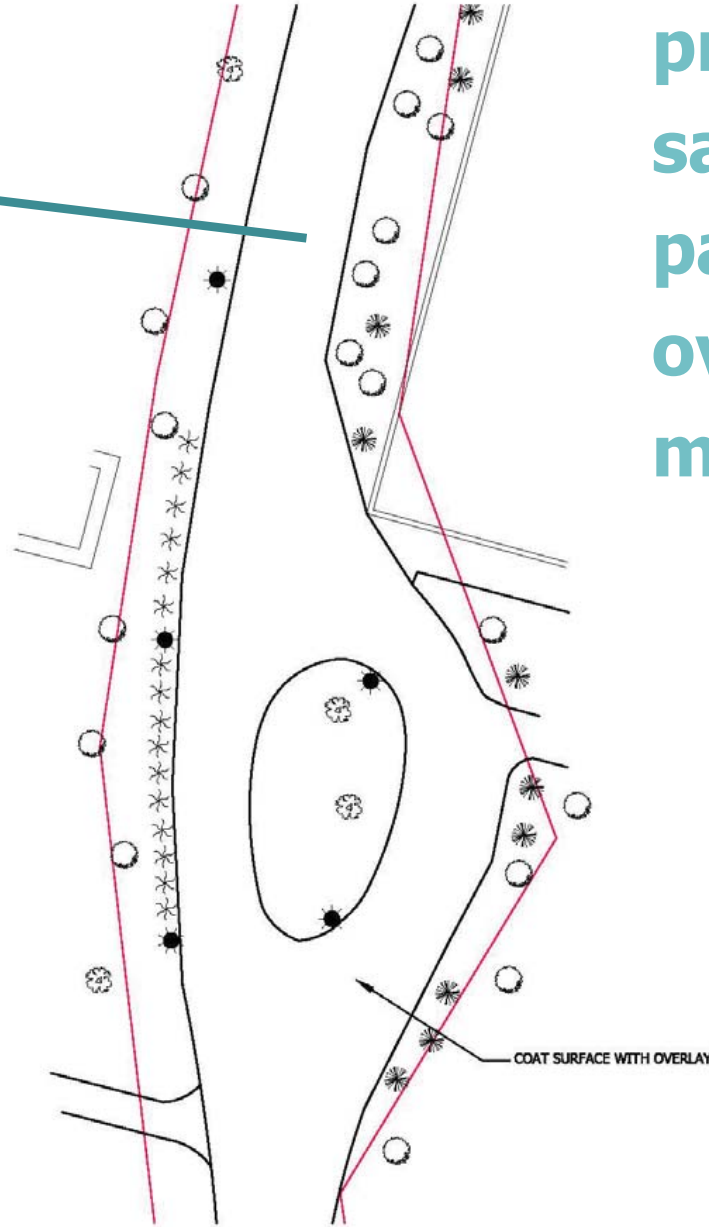
remove shrubs



repair cracks with overlay surface

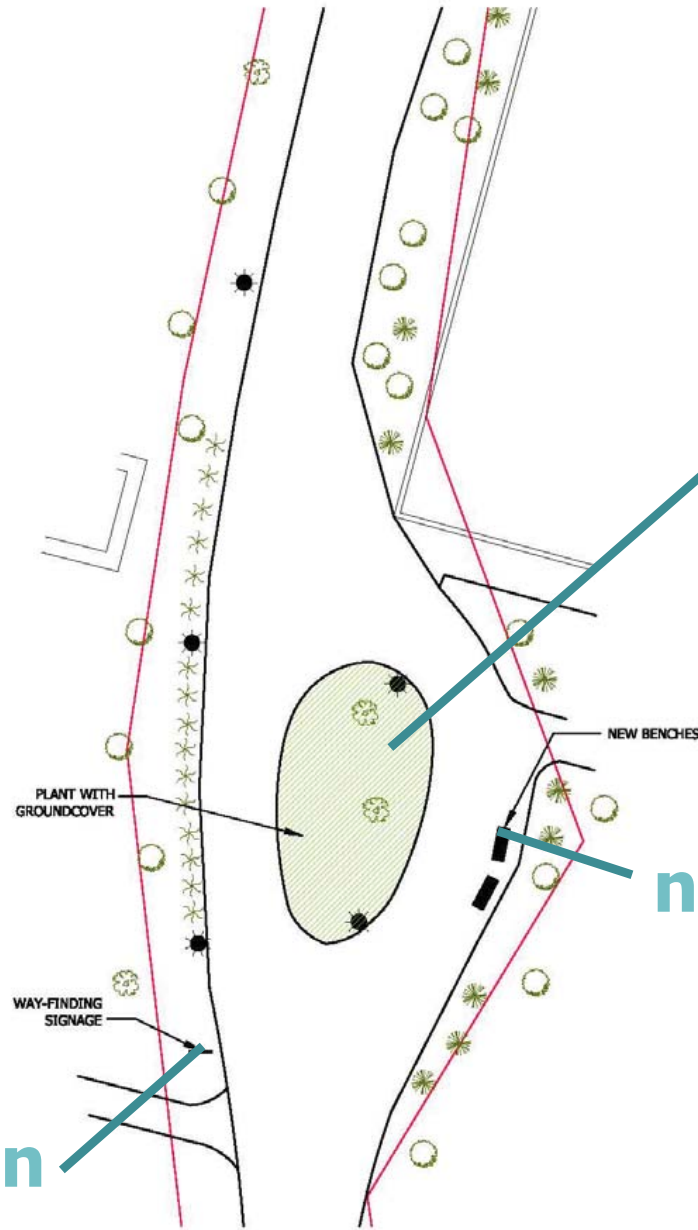
protect all existing trees

proposed textured surface



**provide continuous,
safe, ADA compliant
path achieved by
overlaying new
material**

proposed planting/benches/signs/blue phones

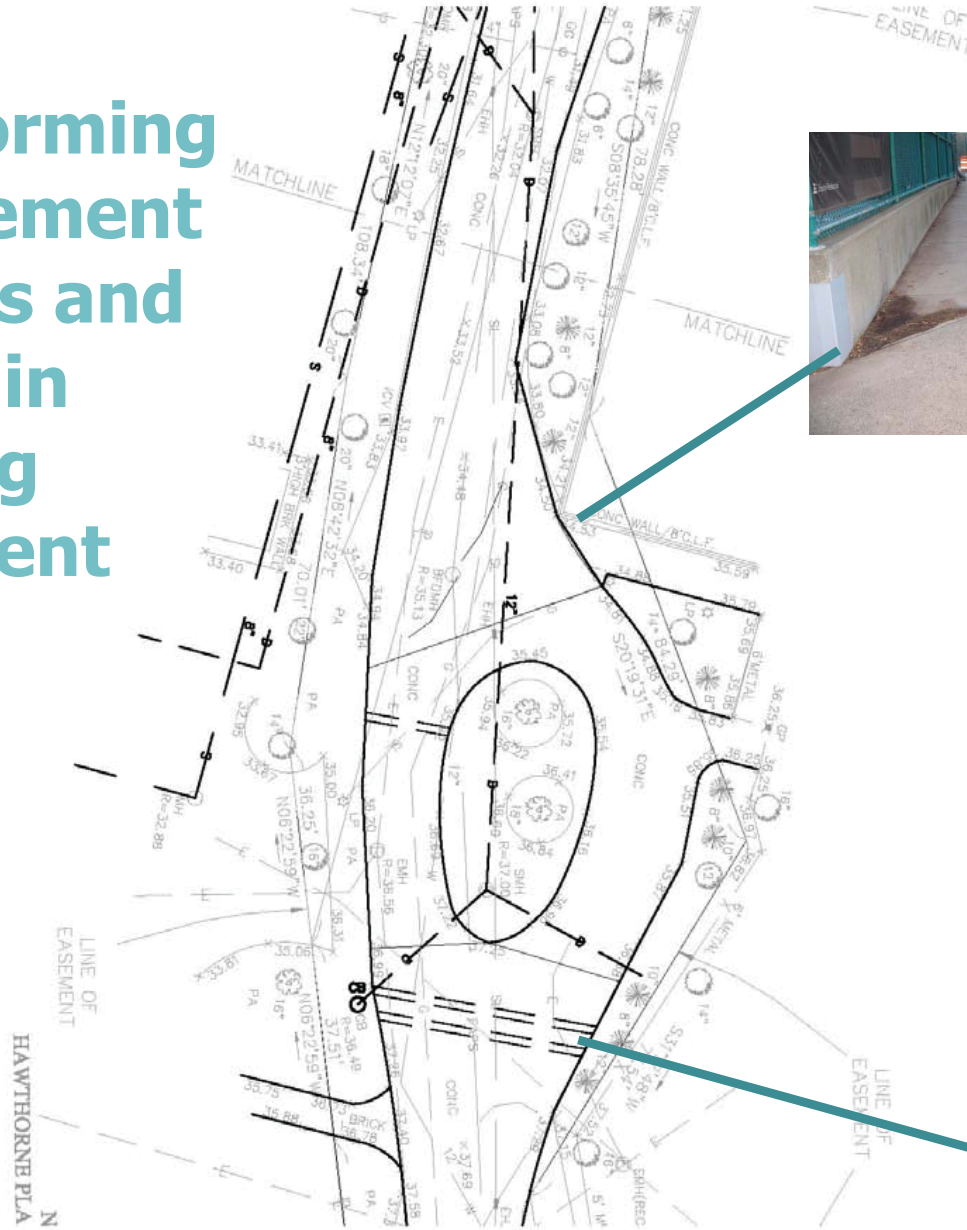


way-finding sign

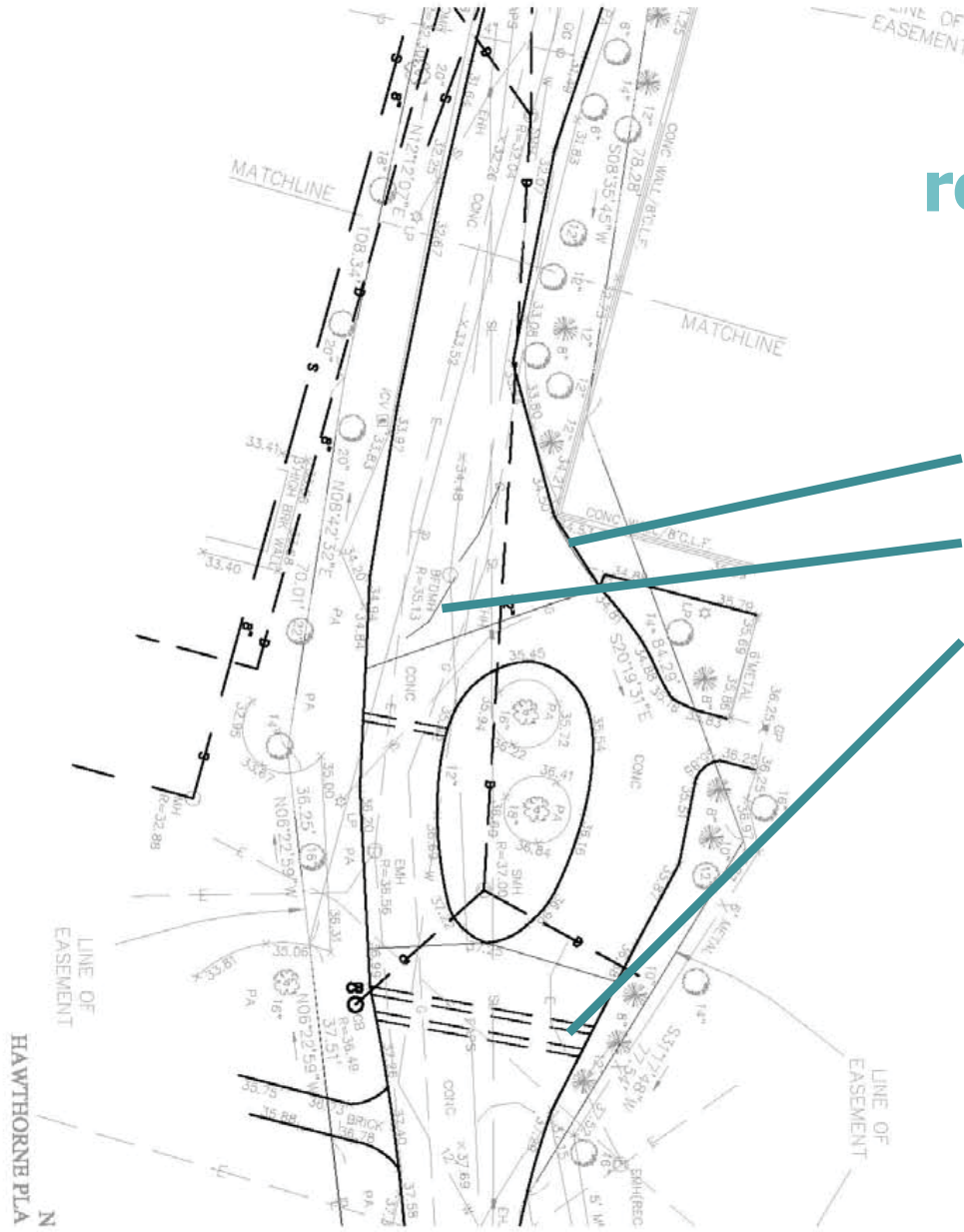
new bench/es

existing drainage issues

puddle forming
at pavement
patches and
cracks in
existing
pavement



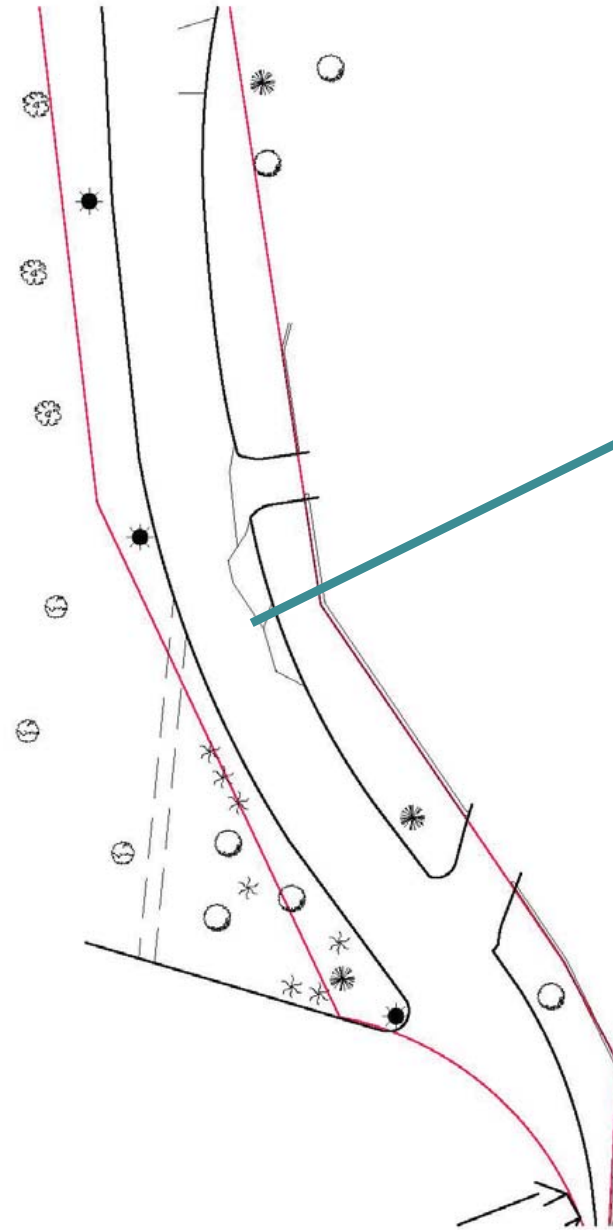
proposed drainage solutions



**remove/repair
all existing
pavement
patches,
cracks and
imperfections**

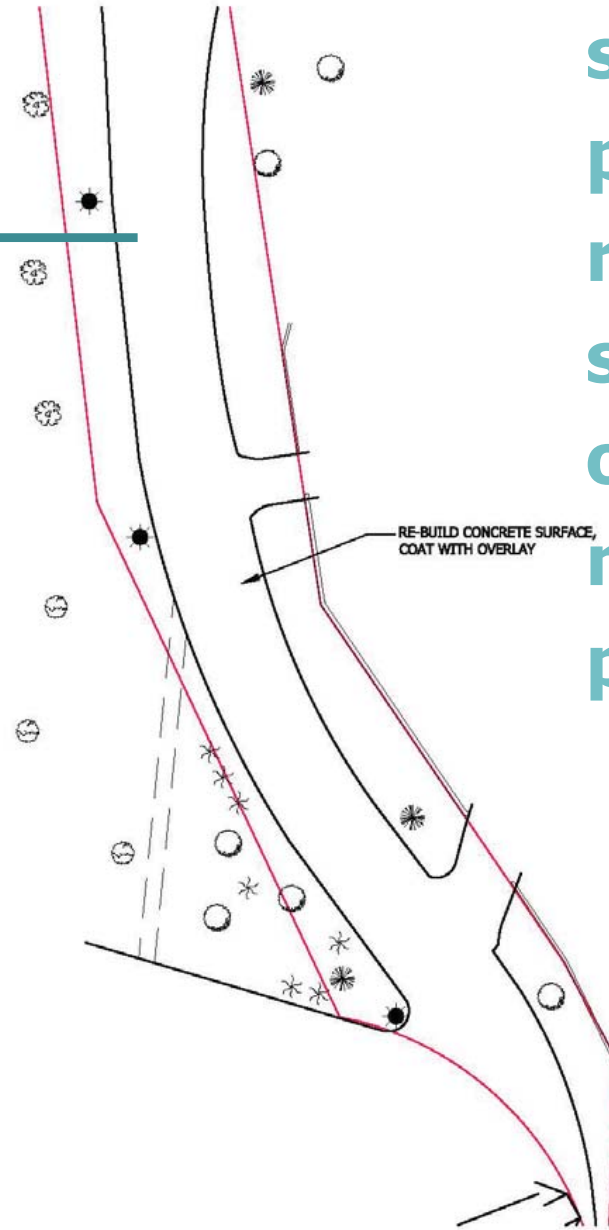
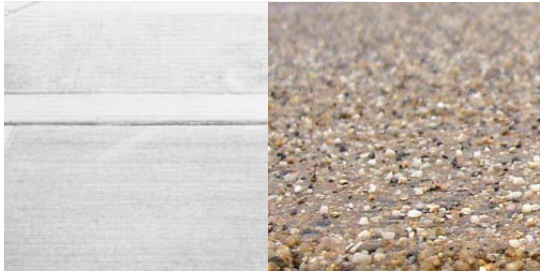
existing/demolition

**protect all
existing trees**



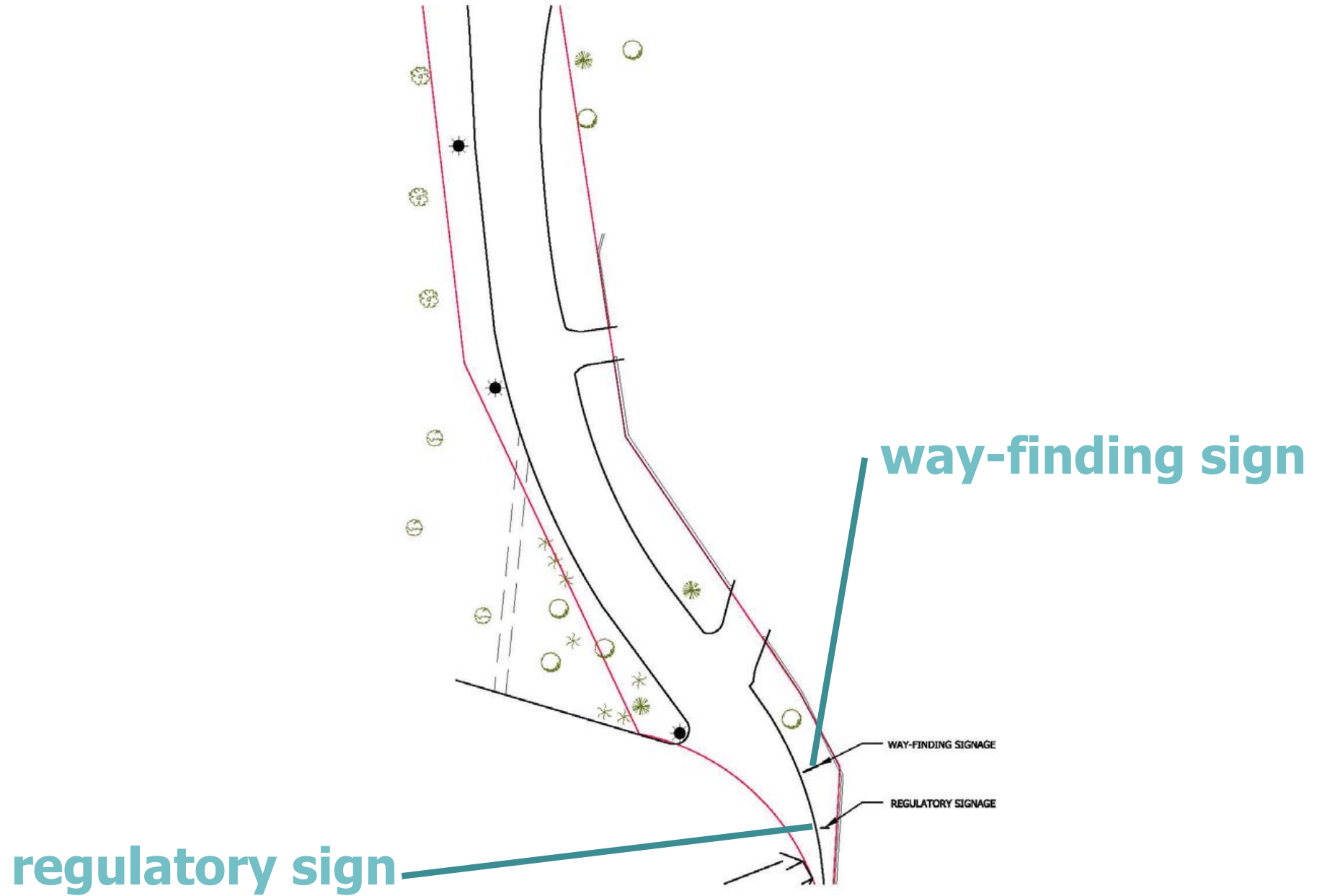
**repair cracks with
overlay surface
and rebuild
damaged area**

proposed textured surface



provide continuous,
safe, ADA compliant
path achieved by
rebuilding area of
subsidence and
overlaying new
material over entire
path

proposed planting/benches/signs/blue phones



existing drainage issues



7/F
CE CONDOMINIUM

large puddle forming where existing pavement has cracked and collapsed

puddles forming where runoff cannot drain to landscaping



N/F
CHARLES RIVER
PARK "D" COMPANY

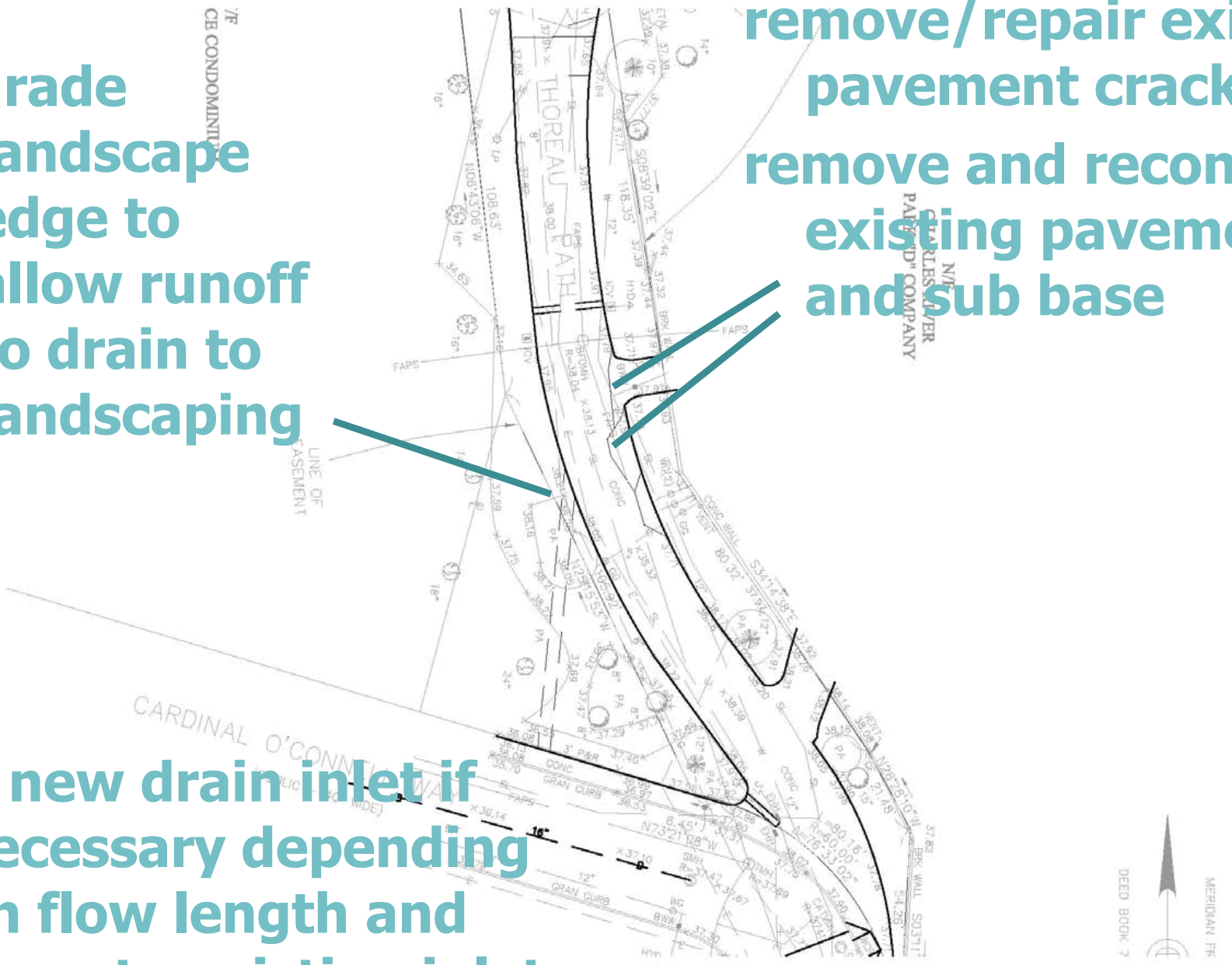


proposed drainage solutions

regrade
landscape
edge to
allow runoff
to drain to
landscaping

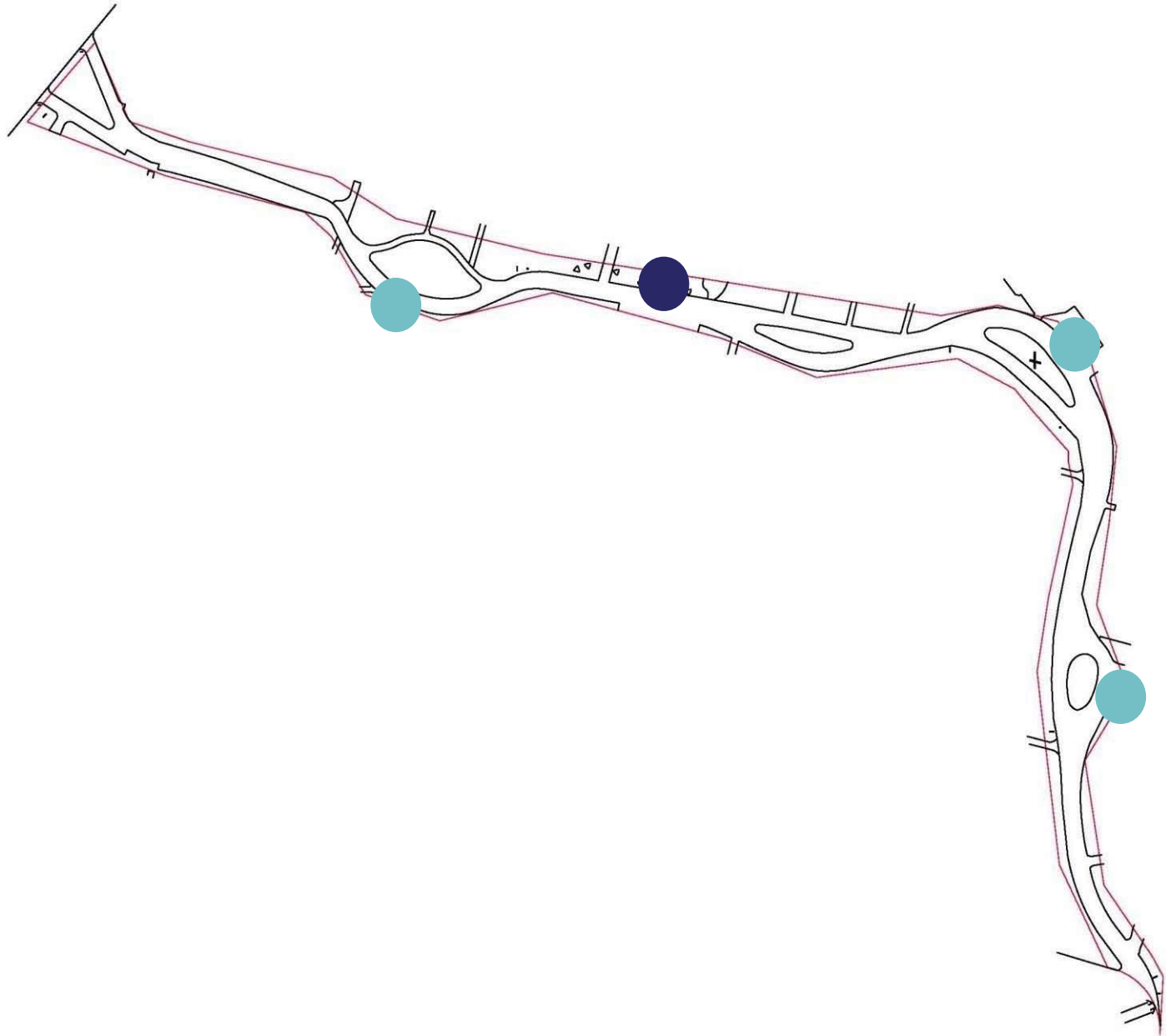
remove/repair existing
pavement cracks
remove and reconstruct
existing pavement
and sub base

add new drain inlet if
necessary depending
on flow length and
slope to existing inlet



other amenities

bench plan



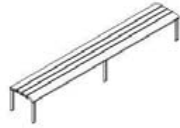
bench considerations



backless 24" bench



backless 59" bench



backless 118" bench



freestanding, surface mount and embedded supports



backed 24" bench



backed 69" bench



backed 118" bench



backed 118" bench w/center arm



backed 24" bench



backed 69" bench



backed 118" bench



72" bench



72" bench with center arm



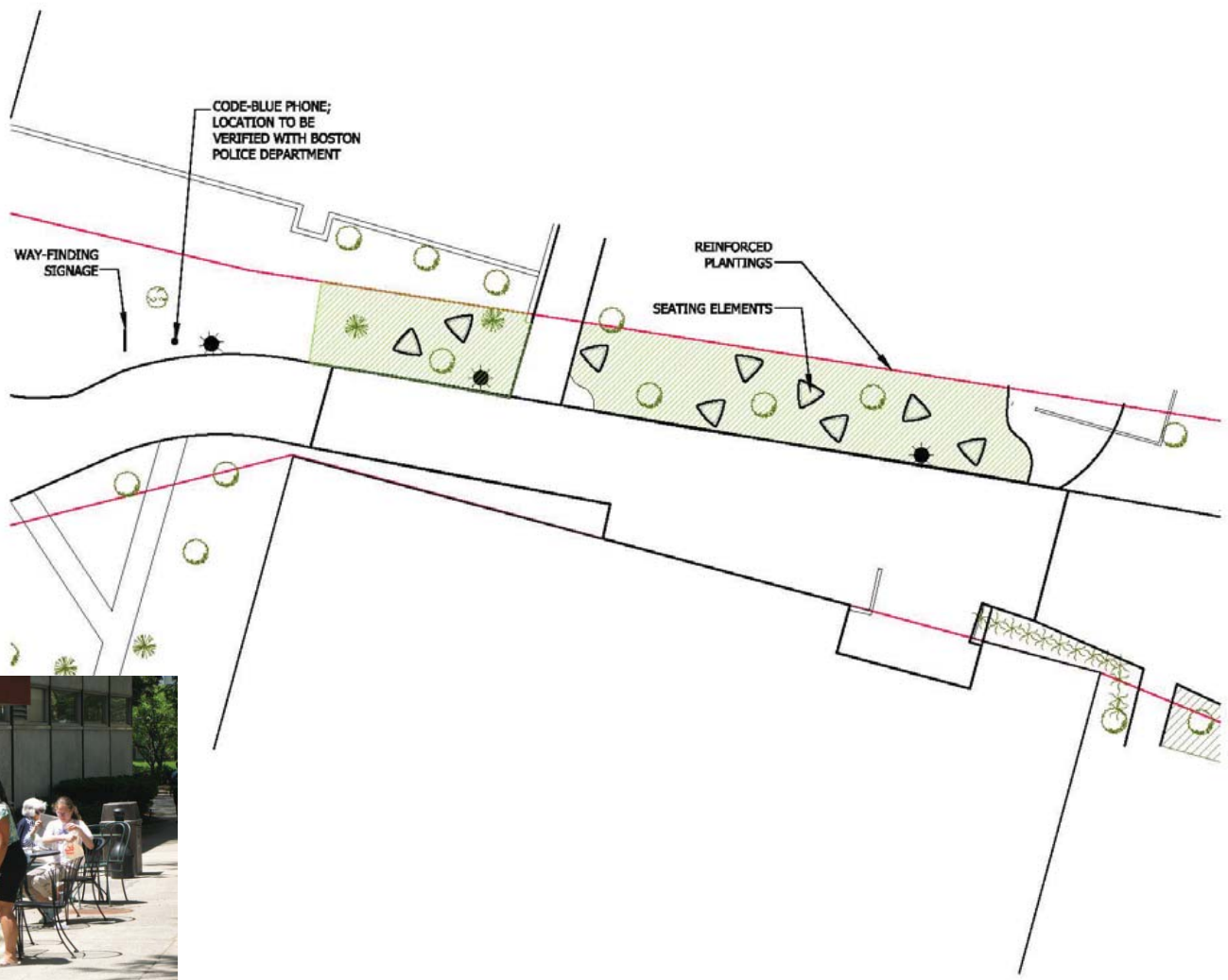
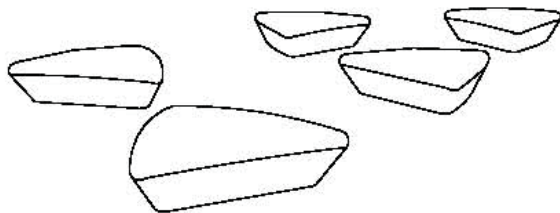
90" bench with center arm



90" bench with two intermediate arms



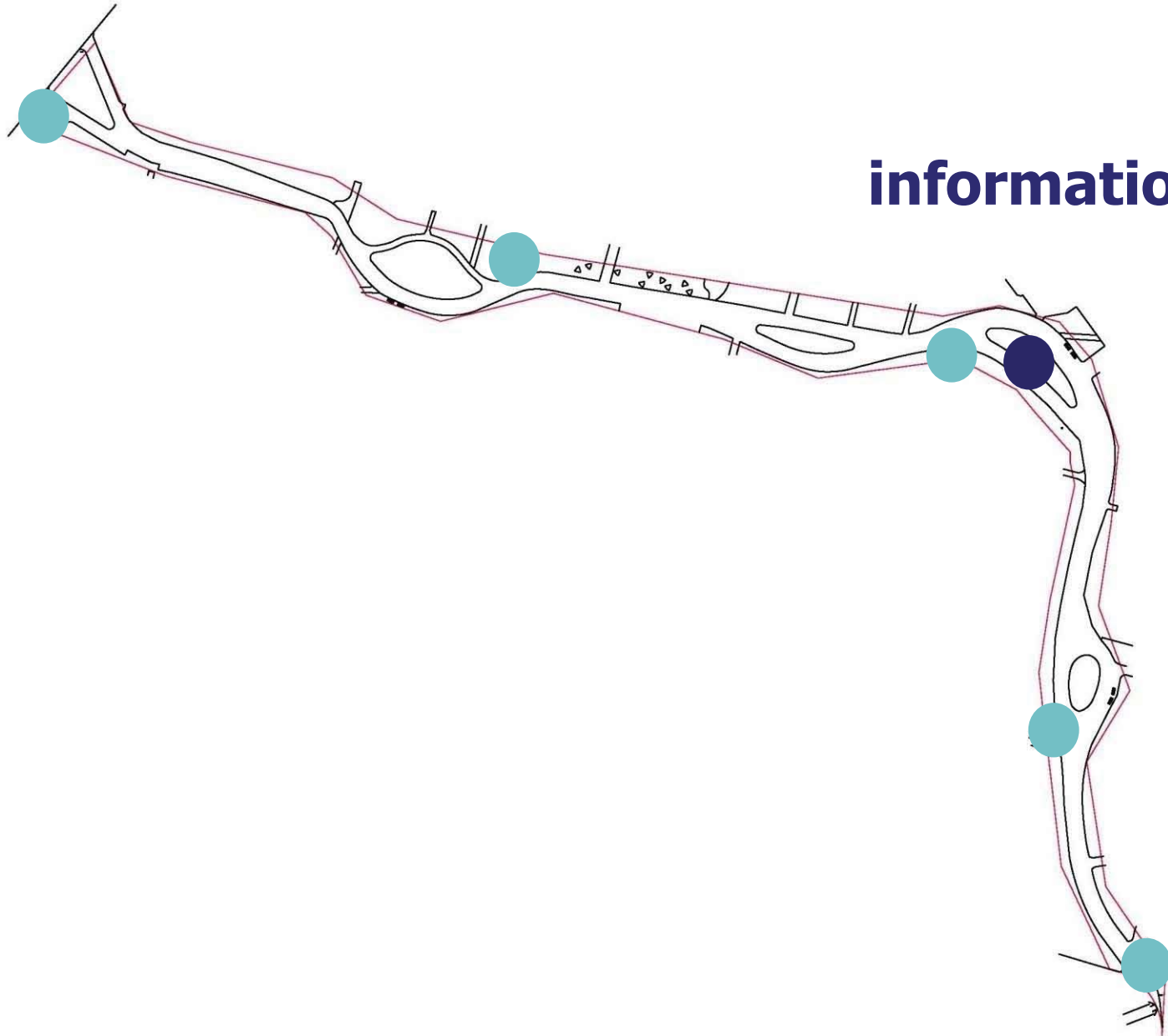
backless seating elements



signage

way-finding signs

informational sign



composite illustrative plan



thoreau path

