

Upham's Corner Implementation Presents

The Strand Theatre

Past, Present and Future

Ten interpretason na Kriolu si bu meste.

Se proveerá interpretación en español.

Harry Smith

Dudley Street Neighborhood Initiative

Lori Lobenstine & Kenneth Bailey

The Design Studio for Social Intervention

Klare Shaw

Member of the 2004 Task Force on the Future of the Strand Theatre

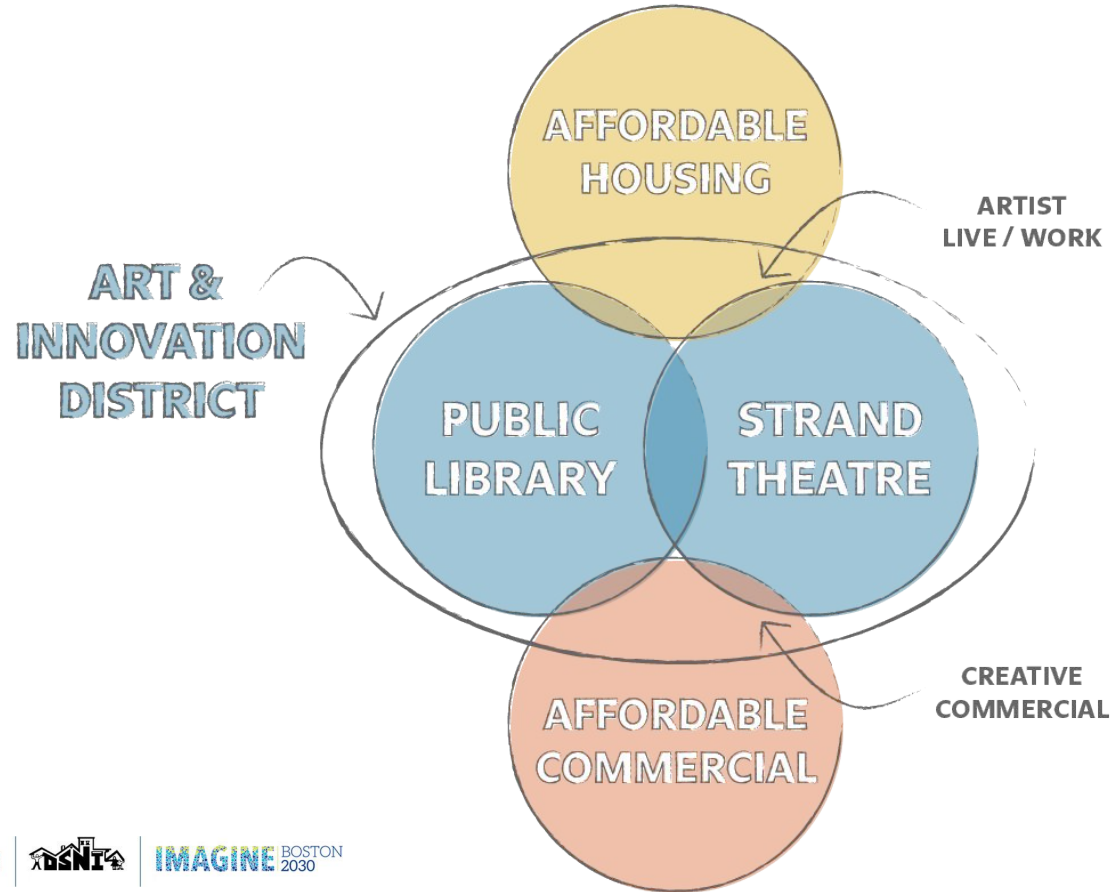
BROUGHT TO YOU BY



WHERE WE'RE AT IN THE PROCESS



THE BIG PICTURE





STRAND THEATRE

6:00 - 6:30

Remembering the Strand Theatre

6:30 - 6:45

Imagining the Strand Theatre

6:45 - 7:45

Discussion Groups

7:45 - 8:00

Red Sage Playback and

Up Next in Upham's

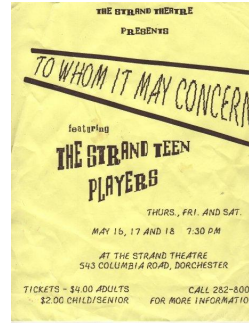
THE LAST 100 YEARS



Vaudeville House



Movie Palace



Community Revival



City Restoration



What next?



As the owner of the Strand Theatre,
the City can play a role in helping to catalyze
greater diversity in the arts and contribute
to change of the cultural landscape in Boston.

Mayor's Strand Task Force Report, 2004

2004 REQUEST FOR PROPOSALS

Mission

The Strand Theater is a venue for a diversity of performing arts, cultural programming, and community events.

Its mission is two-fold

- to engage the multicultural residents of Boston, with a special commitment to youth and the Upham's Corner community;
- and to act as a catalyst in strengthening the fabric of the neighborhood.



2004 REQUEST FOR PROPOSALS

Vision

We envision a Strand Theater that will be a thriving, attractive performing arts center, drawing audiences from the Upham's Corner neighborhood, all parts of the City and across Greater Boston. In fulfilling its mission, the Strand will:

- Celebrate diversity in all areas through its programming, its audiences, its employees, and the performers and producers who use its facilities.
- Promote community involvement in the growth and development of the Theatre
- Partner with both the public and private sectors to advance the economic development of the neighborhood



Julie Burros, Chief of Arts and Culture
Mayor's Office of Arts and Culture



Revealed a deep and widespread need for **affordable cultural spaces** for people to gather, create, collaborate, and participate in the arts - **especially arts that reflect their culture in their own neighborhoods.**

For non-profit arts providers, **access to facilities** that are affordable and appropriate for performance and the visual arts disciplines emerged as a common theme, especially from small and mid-sized organizations.

Boston Performing Arts Facility Assessment

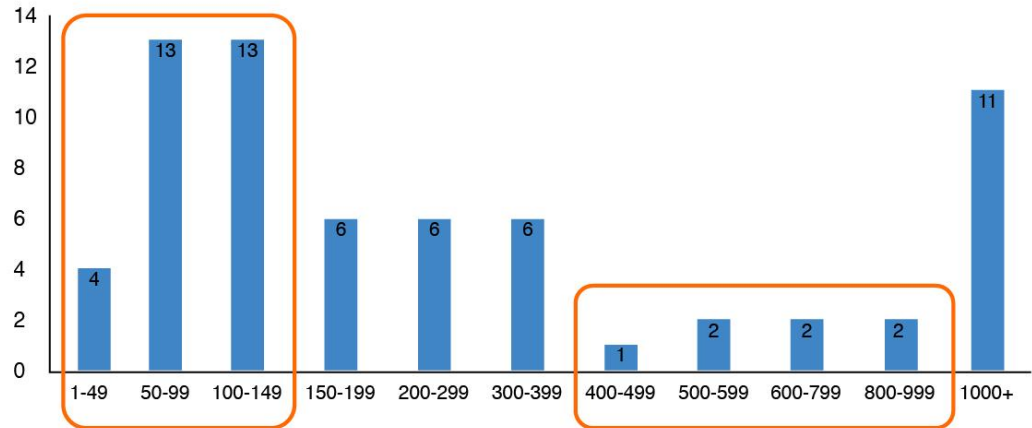
DRAFT FOR PUBLIC COMMENT
July 2017

Authors:

Christopher Perez, Vice President
Susan Nelson, Executive Vice President
Elizabeth Wiesner, Senior Associate

 Prepared by TDC

Number of Boston Venues by Capacity



ASSESSMENT

Rehearsal

Space for independent artists and small to mid-sized organizations

Needed: Extremely low cost, modest technical amenities, located near public transportation

Space for larger organizations

Needed: Sophisticated technical amenities, located near public transportation

Performance

150 seats for independent artists and small organizations

Needed: Sophisticated technical amenities, low rental cost, flexible space

400 to 600 seats for small to mid-size organizations

Needed: Sophisticated technical amenities, low rental cost, flexible space

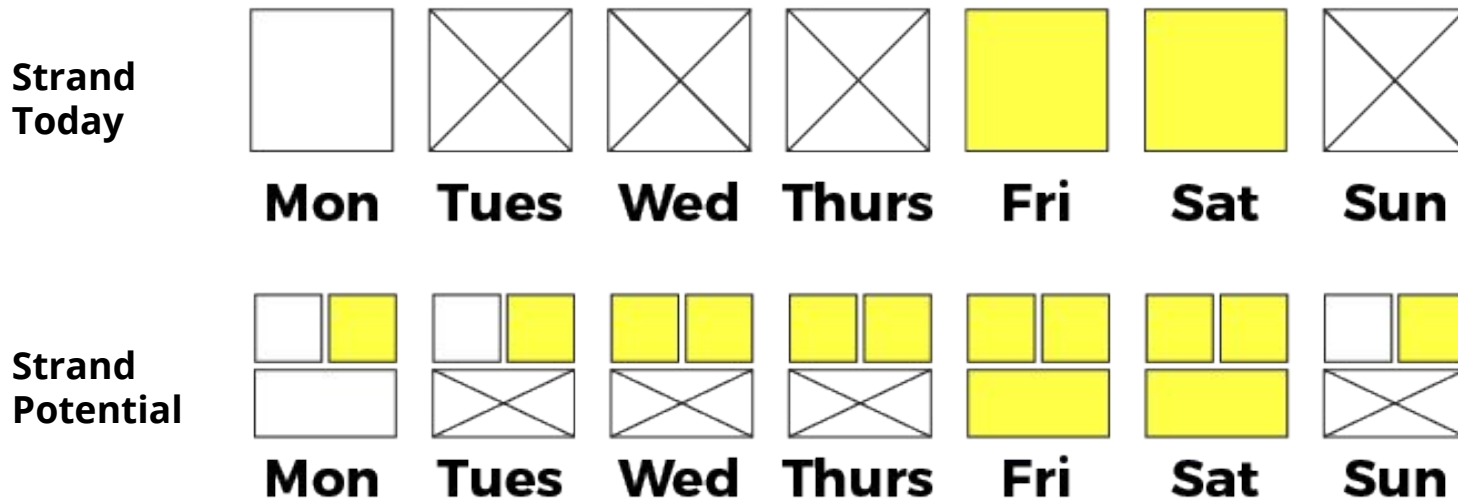
300 to 600 seats for local commercial acts

Needed: Modest amenities, low rental cost

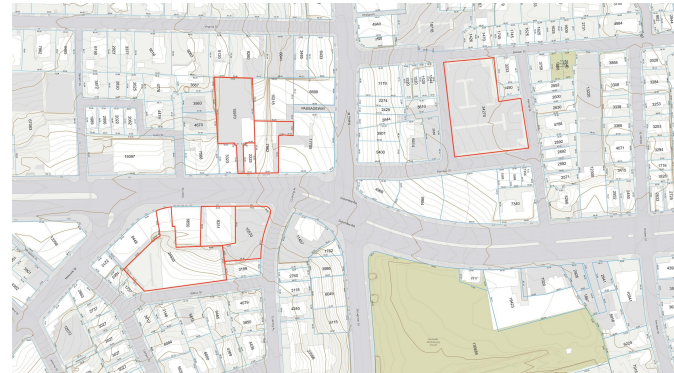
Performance space with a stage appropriate for dance



HOW DOES THIS APPLY TO THE STRAND?



WHAT IS THE OPPORTUNITY?



IMAGINE BOSTON 2030

PARAMOUNT CENTER, EMERSON COLLEGE



BOSTON CENTER FOR THE ARTS



DISNEY'S BEAUTY AND THE BEAST
AUG 14 THROUGH

PERFORMING ARTS SPACES AROUND THE COUNTRY



Cleveland, OH



Minneapolis, MN



Brooklyn, NY



New Orleans, LA



New Brunswick, NJ



Brooklyn, NY



Group Discussion

Red Sage Playback

Up Next in Upham's Corner Implementation

What we've heard

January 20, 2018

For more information please visit our website

<http://bit.ly/uphamscornerimplementation>

