



Emerson

COLLEGE

171-172 Tremont Street

Boston, MA 02116

Institutional Master Plan Amendment

Submitted to the
Boston Planning and Development Agency
June 12, 2018

Table of Contents

	Page
1.0 MISSION AND OBJECTIVES	1-1
1.1 College Overview	1-1
1.2 Educational Units and Programs	1-1
1.2.1 The School of Arts	1-1
1.2.2 The School of Communication	1-2
1.2.3 Other Programs	1-2
1.2.3.1 Institute for Liberal Arts and Interdisciplinary Studies	1-2
1.2.3.2 External Programs	1-2
1.2.4 Accreditation	1-3
1.2.5 Memberships and Affiliations	1-4
2.0 EXISTING PROPERTY AND USES	2-1
2.1 Existing College Owned Facilities	2-1
2.1.1 Campus Buildings	2-1
2.1.2 Leased Properties	2-4
2.1.3 Partnerships	2-5
2.2 Campus Planning Framework	2-5
3.0 CAMPUS DEMOGRAPHICS AND EMPLOYMENT	3-1
3.1 Student Population Served	3-1
3.2 Student Housing	3-1
3.2.1 Existing Housing	3-1
3.2.2 Support Provided to Off-Campus Students	3-2
3.2.3 Rules and Regulation	3-2
3.2.4 Impact on the Surrounding Neighborhoods	3-2
3.2.5 Current Housing	3-3
3.2.6 Short Term Housing Plan	3-3
3.3 Employment	3-4

	Page
4.0 PROPOSED INSTITUTIONAL PROJECTS	4-1
4.1 171 - 172 Tremont Street Interior Renovations	4-1
4.2 Proposed Future Projects	4-2
4.2.1 150 Boylston Street Fitness Center Relocation	4-2
4.2.2 216 Tremont Street Roof Replacement	4-2
4.2.3 216 Tremont Street Sidewalk Repair	4-2
4.2.4 Rotch Playground Turf Replacement	4-2
5.0 TRANSPORTATION AND PARKING MANAGEMENT	5-1
5.1 Neighborhood Impacts	5-1
5.2 Student Transportation	5-1
6.0 OTHER	6-1
6.1 Public Notice	6-1
6.2 Zoning	6-1
6.3 Safety	6-1
6.4 Sustainability	6-2
6.5 Public Benefits	6-3
6.5.1 Rotch Field	6-3
6.5.2 Community Service	6-4
6.6 PILOT Payments	6-4

Appendices

- A. Scoping Determination
- B. Site Plan and Floor Plans
- C. Comment Letters from Elected Officials and Responses
- D. Comment Letters from the Public and Responses
- E. Community Service Report

SECTION 1.0
MISSION AND OBJECTIVES

1.0 MISSION AND OBJECTIVES

1.1 College Overview

Founded in 1880, Emerson College is committed to excellence in education for communication and the arts. Based originally on the study of oratory and the performing arts, Emerson continues to challenge students to think and express themselves with clarity, substance and insight, instilling the highest professional standards through rigorous academic inquiry and experiential learning. Its specialized major and external programs are integrated with the liberal arts and interdisciplinary study, and are informed by a set of core values that seek to promote civic engagement, encourage ethical practices, foster respect for human diversity, and inspire students to create and communicate with clarity, integrity, and conviction. Today, Emerson attracts students from 50 states and 57 countries. The institution's mission and focus of the work of its faculty and students, remain largely the same: to explore and push the boundaries of communication, art, and culture thereby contributing to the advancement of society.

1.2 Educational Units and Programs

1.2.1 The School of Arts

The School of Arts is home to four departments: Performing Arts, Visual and Media Arts, Writing, Literature and Publishing, and Comedic Arts. Students in all degree programs are encouraged to pursue interdisciplinary study and minors when possible.

The undergraduate program leading to the Bachelor of Arts degree offers programs in theatre studies, theatre education, media studies, and media production. The School offers the Bachelor of Fine Arts degree in Acting, Musical Theatre, Dance/Theatre, Design/Technology, Media Production and Creative Writing.

Graduate programs leading to the Master of Arts degree are available in Theatre Education, and Writing and Publishing. The School also offers the Master of Fine Arts degree in Creative Writing and Media Art. A Certification Program for students preparing for careers as elementary, middle and/or high school teachers is available through the Theatre Education program.

1.2.2 The School of Communication

The School of Communication is organized into five academic departments: Communication Sciences & Disorders, Communication Studies, Journalism, Marketing Communication and Business of Creative Enterprises. The school is also the home of course offerings in history, math, philosophy, psychology, religion, science and social and political sciences.

The undergraduate program leading to the Bachelor of Science degree offers programs in Communication Disorders, Journalism, Communication Studies, Political Communication and Business of Creative Enterprises. The school is also the home of course offerings in history, math, philosophy, psychology, religion, science and social and political sciences.

Graduate Programs leading up to the Master of Arts degree are available in Global Marketing and Advertising, Integrated Marketing Communications, Journalism, Communication Management and a Master of Science program in Communication Sciences and Disorders. Graduates of the Communication Sciences and Disorders program are also eligible for certification and licensure to practice clinical speech language pathology.

1.2.3 Other Programs

1.2.3.1 The Institute for Liberal Arts and Interdisciplinary Studies

The Institute for Liberal Arts and Interdisciplinary Studies has as its mission the promotion of the interdisciplinary study of the liberal arts among students and to support faculty development and collaboration within the college. Institute courses and programs include First Year and Upper Level courses in Interdisciplinary Studies and the Honors Program. The Institute draws upon the diversity of Emerson's faculty and students, and the different disciplinary, intellectual and creative interests they represent.

1.2.3.2 External Programs

The College offers a unique education abroad program at Kasteel Well, the Netherlands, where students live and study in a restored fourteenth-century medieval castle. Study at Kasteel Well is combined with extensive travel and exploration of the cultural and historical offerings of several

major cities in Europe. Within a climate supportive of diversity, civility, and freedom of expression, Emerson students become informed and articulate members of society.

The Office of Education Abroad and Domestic Programs provide Emerson students with opportunities to explore their academic goals and expand their cultural knowledge in international settings and global environments. In addition to the College's flagship education abroad program at Kasteel Well, students have the opportunity to participate in one or more Emerson-sponsored programs during the semester or summer. Emerson-sponsored programs include direct exchanges with partner institutions across Europe, Asia, and South America; summer faculty-led Global Pathway Programs to more than a dozen countries; and domestic study away programs in Los Angeles, CA and Washington, D.C. In addition to Emerson-sponsored programs, students can enroll for a semester or summer of study through non-affiliated universities and other education abroad programs offered across the globe.

1.2.4 Accreditation

Emerson College is accredited by the New England Association of Schools and Colleges, Inc., a non-governmental, nationally recognized organization whose affiliated institutions include elementary schools through collegiate institutions offering post graduate instruction.

Accreditation of an institution by the New England Association indicates that it meets or exceeds criteria for the assessment of institutional quality periodically applied through a peer group review process. An accredited school or college is one which has available the necessary resources to achieve its stated purposes through appropriate educational programs, is substantially doing so, and gives reasonable evidence that it will continue to do so in the foreseeable future.

1.2.5 Memberships and Affiliations

1. ProArts Consortium
2. American Council on Education (ACE)
3. New England Association of Schools and Colleges (NEASC)
4. National Association of Independent Colleges and Univ. (NAICU)
5. Association of Governing Board and Colleges (AGB)
6. Association of Independent Colleges and Universities in MA (AICUM)
7. Greater Boston Chamber of Commerce
8. Boston Municipal Research Bureau
9. New England Council
10. Council for Higher Education Accreditation (CHEA)
11. Massachusetts Campus Compact (MACC)
12. Boston Higher Education Partnership (BHEP)
13. Council of Independent Colleges (CIC)
14. Association of American Colleges and Universities (AAC&U)
15. Museum of African American History
16. Museum of Fine Arts
17. AASHE Association for the Advancement of Sustainability in Higher Education
18. Beacon Hill Civic Association
19. American College & University President's Climate Commitment
20. The Caucus for Writers & Producers
21. Midtown Park Plaza Neighborhood Association (MPPNA)
22. Downtown Boston Business Improvement District (BID)
23. City of Boston Emergency Shelter Commission
24. Friends of the Public Garden
25. Park Plaza Civic Advisory Committee
26. Chinatown Safety Committee
27. Back Bay Association
28. The College Board
29. Boston Arts Academy

SECTION 2.0
EXISTING PROPERTY AND USES

2.0 EXISTING PROPERTY AND USES

2.1 Existing College Owned Facilities

Emerson College's campus is located in the Midtown Cultural District, also known as the Theatre District. The Midtown Campus currently has twelve buildings. The College maintains a satellite campus in the Netherlands and opened the Los Angeles Center in January 2014. The Los Angeles Center provides on-site housing for students participating in the LA internship program and includes academic facilities, community space and offices for Alumni Relations and Admission staff. The following is a site map of Emerson's owned properties. **Figure 1**

2.1.1 Campus Buildings

The College purchased 171-172 Tremont Street in November 2017, and plans to renovate the interior space for student support services to include a cultural center, health services center, spiritual life center, meeting space and a counseling center. This renovation project will start in summer 2018, with an estimated completion date of winter 2019.

The College purchased 134-136 Boylston Street in late May 2018. The four-story building consists of three residential units and one commercial space on street level. The building's major systems were updated in 2013 and 2014. The College plans to continue leasing space to the current tenants.

Opened in September 2017, the 2 Boylston Place Residence Hall includes housing for 380 students and includes common space and a café accessible to the public on the ground floor.

The Ansin Building, a 14-story office building at 180 Tremont Street serves as Emerson's administrative hub, center for media arts and home of Emerson's radio station, WERS.

The Little Building located at 80 Boylston Street is currently closed for major renovations. The College's largest residence hall will reopen in fall 2019 and will include housing for an additional 294 students totaling 1044 students.

The former Union Warren Savings Bank, at 216 Tremont Street houses the Department of Communication Sciences and Disorders, clinics, and classrooms.

The Walker Building, at 120 Boylston Street, houses the Library, classrooms, the School of Communications, in addition to faculty and administrative offices. The Walker Building is also home to the newly constructed central dining facility that holds 550 students and spans two floors.

Note: The Walker Building currently has two tenants: Whiskey Saigon has a lease that runs through January 2022, and Barnes and Noble Booksellers, the College's bookstore, open to the public, has a contract running through April 30, 2020.

The Tufts Performance and Production Center houses Emerson's Performing Arts Department, including two theaters, two television studios, laboratories, post-production facilities, media centers and departmental offices.

The Cutler Majestic Theatre, a Historic Boston Landmark, was purchased in 1983 and underwent a major renovation/restoration in 2003.

The Piano Row Residence Hall opened in September 2006. The 14-story, 564-bed residence hall includes a gymnasium with a NCAA-sized basketball court, a student campus center, the Department of Professional Studies and Special Programs and the Office of Student Success.

The Paramount Center opened in March 2010. The mixed-use facility includes the renovated 596-seat Paramount Theatre, the 125-seat Jackie Liebergott Black Box Theatre, the 170-seat Bright Family Screening Room, 9 studios, a soundstage, office space, a restaurant at street level and housing for 262 students.

Note: Current retail tenant is Salvatore's Restaurant which has a lease that expires in December 2021.

The Colonial Residence Hall opened in September 2009. Emerson College converted the Colonial building to a 364-bed residence hall. This building houses the College's print and copy shop and the Visitor Center. The historic Colonial Theatre remains on the street level of the Colonial Building and is closed for renovations with plans to reopen in June 2018.

Note: Ambassador Theatre Group, (ATG), operator of the Colonial Theatre has a long-term lease.

Note: Collegiate Press, a print and copy shop housed in the Colonial Building, has a contract with the College through June 30, 2020.



Emerson
COLLEGE
OWNED PROPERTIES

- A. PARAMOUNT CENTER - 543-561 WASHINGTON STREET**
- B. ANSIN BUILDING - 180 TREMONT STREET**
- C. 216 TREMONT STREET**
- D. CUTLER MAJESTIC THEATRE - 219 TREMONT STREET**
- E. TUFTS PERFORMANCE AND PRODUCTION CENTER - 10 BOYLSTON PLACE**
- F. LITTLE BUILDING - 80 BOYLSTON STREET**
- G. THE COLONIAL BUILDING - 100 BOYLSTON STREET**
- H. WALKER BUILDING - 120 BOYLSTON STREET**
- I. PIANO ROW RESIDENCE HALL - 150 BOYLSTON STREET**
- J. 2 BOYLSTON PLACE**
- K. 171-172 TREMONT STREET**
- L. 134-136 BOYLSTON STREET**

Figure 1

2.1.2 Leased Properties

There are times when the College needs to close a building for renovations and find space in close proximity to the campus to accommodate administrative and student facilities for the duration of a campus project. Due to the Little Building residence hall closing for two years for major renovations, the College temporarily relocated the fitness center, student rehearsal space, meeting space, and administrative offices.

The following is a list of the College's current leased spaces:

50 Tufts Street: The College leases 16,000 square feet of space in Somerville for storage of theatrical backdrops, props, and other materials. The College's lease runs through 2020.

10 Park Plaza: The College leases 1,515 square feet of space at the State Transportation Building for the literary magazine Ploughshares and for the Associate Vice President (AVP) for Research and Creative Scholarship. The lease runs through April 2019. The College also leases 8,747 square feet of space for two faculty offices: Communication Sciences & Disorders Face Lab, and the Title IX office. The lease runs through February, 2023.

160 Boylston Street: The College leases 4,600 square feet on the third and fourth floor for two entrepreneurial programs: the Emerson Engagement Lab and Emerson Launch. The lease expires in August 2023.

99 Summer Street: The College leases 15,000 square feet of administrative office space for Communications and Marketing, Web Services, Creative Services, Enrollment Marketing, and Institutional Advancement/Alumni Relations. The lease expires in November, 2020.

25 Avery Street: The College has a lease for 11,950 square feet on the first floor and in the basement. The Equipment Distribution Center (formerly located in the Little Building) and a visual arts gallery programmed by the Visual & Media Arts department is located on both floors. The lease expires in February 2021.

20 Park Plaza: The College has a lease for 19,000 square feet of office space on the thirteenth floor of 20 Park Plaza for the Information Technology Department, Facilities & Campus Services, Administration & Finance, and Human Resources. The lease expires in December, 2022. **Figure 2**

12 Hemenway Street: Due to the closing of the Little Building dormitory in spring 2017, the College temporarily leases space for approximately 115 students from fall 2017 through summer 2019. The space is comprised of 42,868 square feet and includes 56 rooms, a commercial kitchen and a café on the first floor. There are three parking spaces included with the lease. **Figure 3**

2.1.3 Partnerships

Rotch Playground: Emerson College remediated and reconstructed Rotch Playground in the South End and entered into a multi-year agreement with the Boston Parks and Recreation Department to utilize the field 40% of the time for Emerson's men's and women's soccer and lacrosse programs, in addition to a practice venue for softball. **Table 1-1 to 1-5** summarizes the College's buildings, leased property, external programs and partnerships.

2.2 Campus Planning Framework

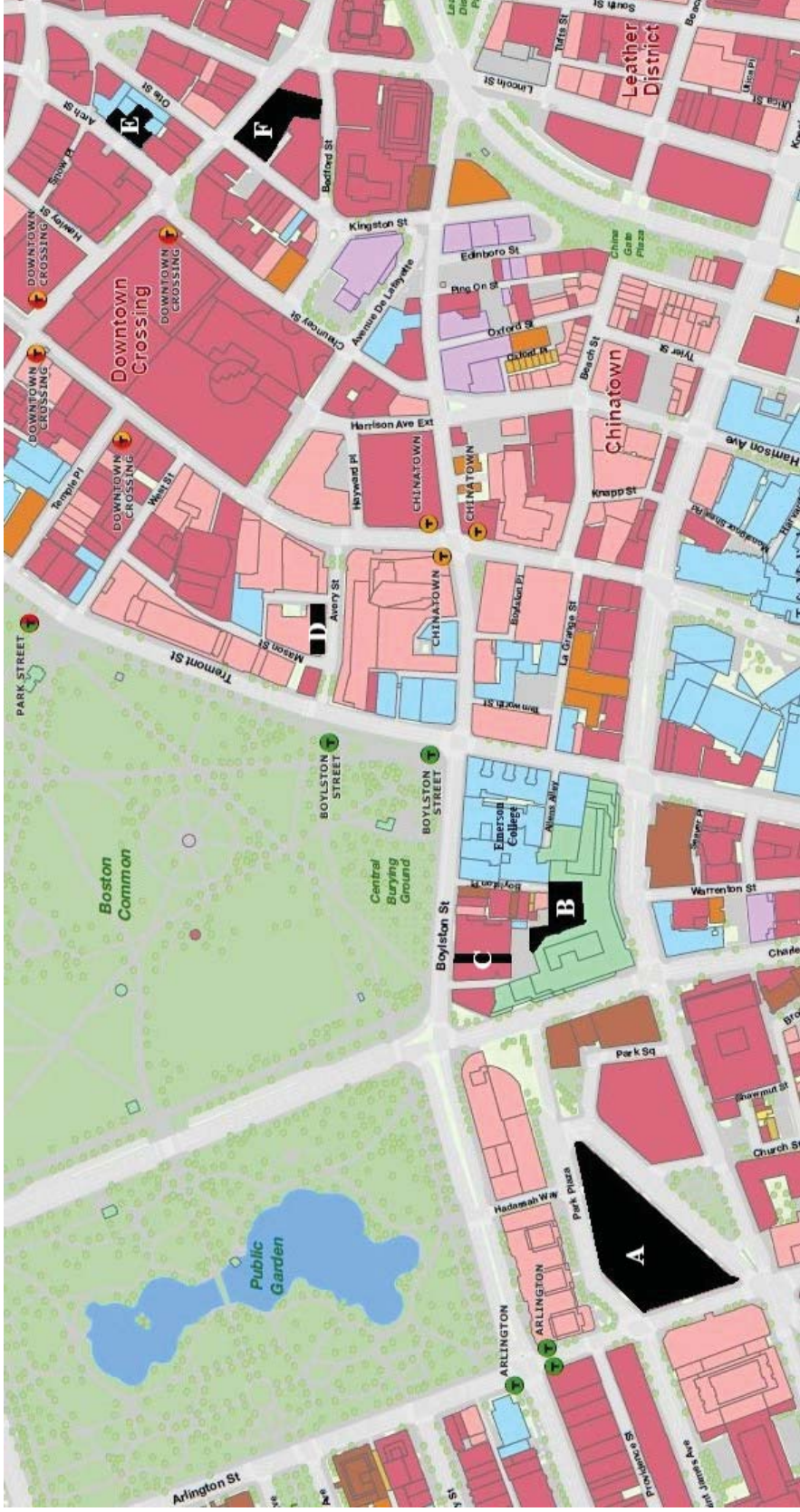
A Framework Plan was completed approximately a year or so ago guided by a core stakeholder group, representing a broad section of the College, as well as involvement from several focus groups that included students, alumni, faculty, and staff from across Emerson. The Framework Plan provides a long-term vision for the physical development of the school's campus in support of its mission. The college's strategic priorities, educating students to assume positions of leadership in communication and the arts, promoting civic engagement, inspiring students to create and communicate with clarity, integrity, and conviction suggest new models of enhanced collaboration and active learning, and emphasize the importance of strong connections within the school, across the college, and to the urban community.

Emerson College moved to its present location after having occupied various locations within the City of Boston, most notably the Back Bay. Over the next two decades, Emerson purchased buildings within the Theatre District and now has the opportunity to more strategically consolidate its landholdings to create a more cohesive campus life, for the entire Emerson Community. The epicenter of campus is located at the intersections of Boylston and Tremont streets at the southeast end of the Boston Common. Emerson's campus comprises twelve buildings in addition to leased space throughout the Midtown Cultural District. Approximately half of Emerson's facilities are new or renovated since 2002.

From a quantity perspective, Emerson's office needs are not as pressing as instructional and student life spaces. The Little Building renovation project along with the recently opened 2 Boylston Place Residence Hall will alleviate the need for more campus housing and social space for our current students.

While options for how to implement the Framework Plan vary, a set of big ideas unify the concepts which will be fully evaluated as the College prepares its new 10-year Institutional Master Plan (IMP) over the next three years. This planning process for the IMP will include the consolidation of the Framework Plan and the College's Strategic Plan, which will serve as the guiding vision for the future of Emerson College in the coming years.

Emerson COLLEGE LEASED PROPERTIES



A. 20 Park Plaza-13th Floor

B. 10 Park Plaza- 1st and 2nd Floors

C. 160 Boylston Street- 3rd and 4th Floors

D. 25 Avery Street

E. 52 Summer Street

F. 99 Summer Street- 9th Floor

Figure 2

12 Hemenway Street, Fenway

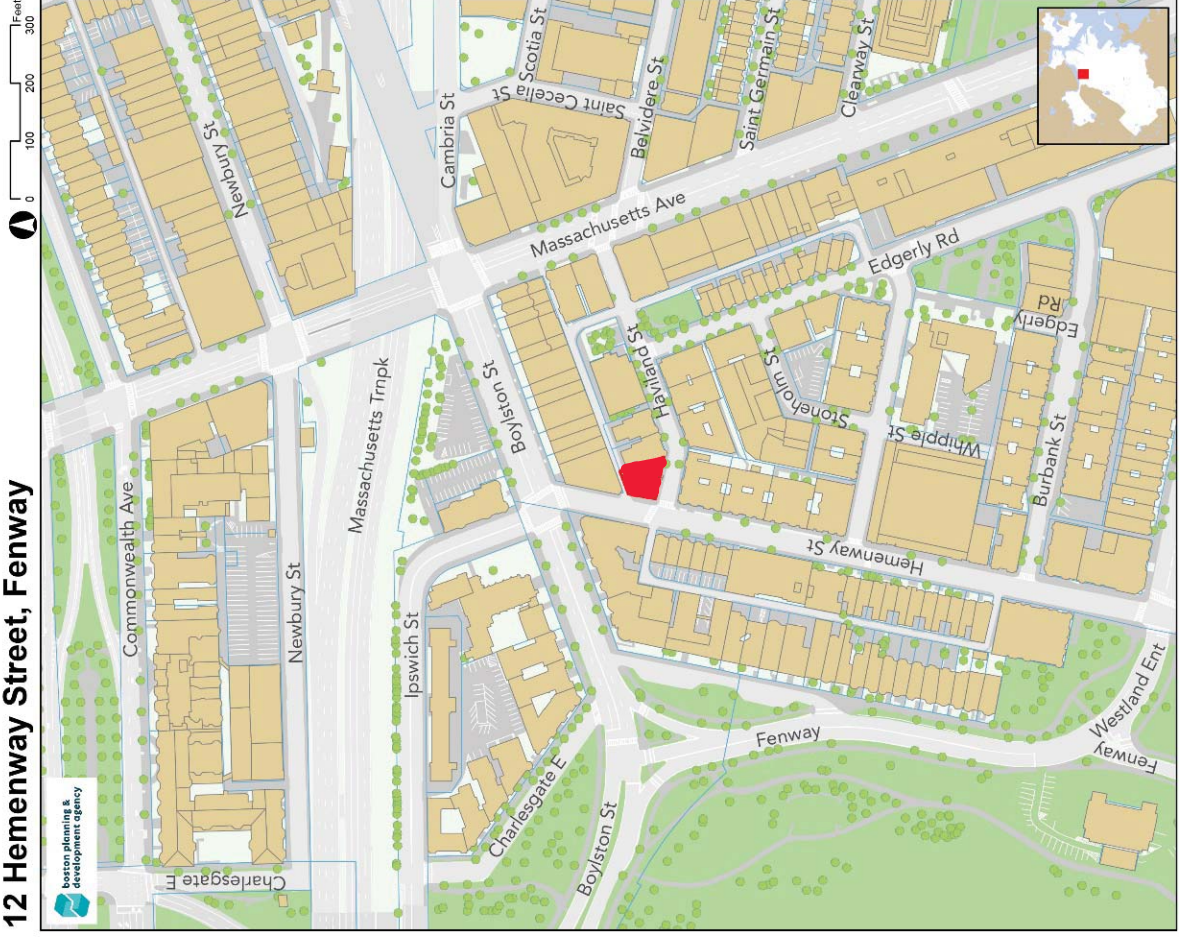


Figure 3

**Table 1-1
Emerson College Owned Properties**

NAME	ADDRESS	DATE PURCHASED	HEIGHT	GROSS SQUARE FOOTAGE	DESCRIPTION
1. Cutler Majestic Theatre	219 Tremont Street	1983	60 ft.	30,000	Built as an opera house in 1903, the historic Cutler Majestic Theatre provides a venue for student productions and performances and lectures by visiting artists. The 1200 seat theatre also hosts performances by regional and national performing arts groups. The landmark facility reopened to the public in the fall of 2003 after undergoing an extensive restoration program.
2. Ansin Building	180 Tremont Street	1992	156 ft.	100,000	Renovated in phases from 1992 to 1999, this is a 14-story academic and administrative hub that also houses state-of-the-art studios for WERS-FM, Academic Advising and the Registrar's Office.
3. Little Building	80 Boylston Street	1994	125 ft.	200,000	Renovated mostly in 1995 with some additional renovations in 1997 and 1998, this is an early-20th century office building that was transformed into a 750-bed residence hall, dining hall and student services facility. This building is currently closed for renovations and will reopen in Fall 2019 to include housing for an additional 294 students.
4. Union Warren Savings Bank Building	216 Tremont Street	1996	115 ft.	50,000	Renovated in phases from 1996 to 1998, this is a multi-purpose building housing the Department of Communication Sciences & Disorders and its clinics, classrooms, and a variety of student service offices.
5. Walker Building	120 Boylston Street	1998	125 ft.	200,000	This building houses the Library, classrooms, Vice President and Dean of Campus Life Office, Housing & Residence Life, Student Life, and Faculty offices. The College's dining center is located on two floors to accommodate up to 550 students.
6. Tufts Performance and Production Center	10 Boylston Place	Opened Fall 2003	151 ft.	80,000	The Tufts Performance and Production Center houses the Department of Performing Arts and includes two theaters, two television studios, make-up and costume labs, faculty offices and an exhibition area. Located adjacent to the Majestic Theatre, the entrance to the 11-story, steel and glass building is at 10 Boylston Place.

**Table 1-2
Emerson College Owned Properties**

NAME	ADDRESS	DATE PURCHASED	HEIGHT	GROSS SQUARE FOOTAGE	DESCRIPTION
7. Piano Row Residence Hall	150 Boylston Street	2001	130 ft.	208,169	Opened in fall 2006, the 14-story residence hall includes a gymnasium with an intercollegiate basketball court, the Department of Professional Studies and Special Programs and the Office of Student Success, in addition to housing for 564 students.
8. Colonial Building	100 Boylston Street	2006	125 ft.	187, 253	Opened in fall 2009, the Colonial Building was renovated for use as a 364-student residence hall. Currently closed, the historic Colonial Theater remains on the street level with the Ambassador Theatre Group overseeing interior renovations. The expected date to reopen is Summer 2019.
9. President's Residence	2 Spruce Street	June 2011		7,749	The space provides living quarters for the President and family in addition to meeting space with faculty, staff, trustees, public officials, and business/civic leaders in the community.
10. 2 Boylston Place	2 Boylston Place	March 2010	171 ft.	89,900	Opened in fall 2017, 2 Boylston Place is a residence hall for 380 students, which includes common space, and a cafe accessible to the public on the ground floor.
11. Paramount Center	555 Washington Street	2005	108 ft.	180,000	Opened in March 2010, the Paramount Center was renovated as a mixed-use facility. The space includes the 596-seat renovated Paramount Theatre, the 125-seat Jackie Liebergott Black Box Theatre, the 170-seat Bright Family Screening Room, 9 studios, a soundstage and office space, in addition to housing for 262 students. The space also includes a restaurant at street level.
12. 171 - 172 Tremont Street	171 - 172 Tremont Street	2017	67 ft.	17,100	Purchased in November, 2017, 171 - 172 Tremont Street will provide a variety of student support services and meeting space.
13. 134-136 Boylston Street	134-136 Boylston Street	2018	63 ft.	6,500	Purchased in May 2018, 134-136 Boylston Street, is a four story building that consists of three residential units and commercial space located on street level. The College plans to continue leasing this space to the current tenants.

**Table 1-3
Emerson College Leased Properties**

NAME	ADDRESS	DATE PURCHASED	HEIGHT	GROSS SQUARE FOOTAGE	DESCRIPTION
13. Storage	50 Tufts Street Somerville, MA	Leased until 2020		16,000	The College leases space for storage of theatrical backdrops, props and other materials.
14. State Transportation Building/Office Suite	10 Park Plaza 1 st Floor and 2 nd Floor	Leased until April 2019 February 2023		8,747	The College leases space on the first floor for Ploughshares and the second floor for two Faculty offices, Communication Science & Disorder's Face Lab, and the Title IX office.
15. 52 Summer Street	52 Summer Street	Leased until November 2019		19,000	The College leases this space for the Fitness Center and studio space.
16. 99 Summer Street	99 Summer Street 9 th Floor	Leased until November 2020		15,000	The College leases office space for Communications and Marketing, Web Services, Creative Services, Enrollment Marketing and Institutional Advancement/Alumni Relations.
17. 160 Boylston Street	160 Boylston Street 3 rd and 4 th Floor	Leased until August 2023		4,600	The College leases space for the Emerson Engagement Lab and Emerson Launch.
18. Equipment Distribution Center	25 Avery Street	Leased until February 2021		11,950	The College leases space for the Equipment Distribution Center (formerly housed in the Little Building) and for an art gallery programmed by the Visual & Media Arts (VMA) department.
19. 20 Park Plaza	20 Park Plaza 13 th Floor	Leased until December 2022		19,000	The College leases space for Information Technology, Facilities & Campus Services, Human Resources, and Administration & Finance.
20. 12 Hemenway Street	12 Hemenway Street	Leased until July 2019		42,868	Due to the closing of the Little Building the College temporarily leases space at 12 Hemenway Street to house approximately 115 students.

**Table 1-4
Emerson College External Programs**

NAME	ADDRESS	DATE PURCHASED	HEIGHT	GROSS SQUARE FOOTAGE	Description
21. Kasteel Well	Kasteel Well, The Netherlands	1986	NA	75,000	A restored historic castle near the Dutch-German border is home to Emerson's Semester Abroad Program in Well, the Netherlands. Moats and lush gardens contribute to the magic of this setting in which approximately 80 undergraduates live and learn in each of the fall and spring terms.
22. Emerson College Los Angeles	5960 Sunset Blvd, Hollywood, CA	2008	130 ft.	102,000	The center for the College's Los Angeles internship program opened in January 2014. The facility includes classrooms, faculty offices, an auditorium, a residence hall for 220 students, and underground parking.

**Table 1-5
Emerson College Partnership**

NAME	ADDRESS	DATE PURCHASED	HEIGHT	GROSS SQUARE FOOTAGE	Description
23. Rotch Playground	Corner of Albany/Randolph Street	25 Year Agreement April 2003	Single Story Fieldhouse	3,820	In partnership with the Boston Parks and Recreation Department, Emerson College operates Rotch Field, a multi-purpose outdoor athletic facility. The field is used for men's and women's soccer and lacrosse team competition. A clubhouse on the edge of the field houses locker rooms, a trainer's room, in addition to office, meeting and storage space. The playing area has a FieldTurf synthetic surface.

SECTION 3.0
CAMPUS DEMOGRAPHICS AND
EMPLOYMENT

3.0 CAMPUS DEMOGRAPHICS AND EMPLOYMENT

3.1 Student Population Served

Since the College offers specialized programs in Communication and Performing Arts, the students enrolled at Emerson are derived from a fairly fixed pool of potential enrollees.

Current Undergraduate Enrollment: Full-time: 3502. Part-time: 92. The College projects minimal growth over the next several years.

Graduate Student Enrollment: Full-time: 542. Part-time: 64. The College anticipates that this number will fluctuate up or down over the next several years depending on economic conditions and online academic programs. Emerson graduate students to a large degree are working professionals who commute to the College via public transportation.

The Department of Professional Studies and Special Programs: These students are seeking certifications in Copyediting, Digital Media Production, Graphic Novel Writing & Illustration, Literary Publishing, Marketing/Branding and Screenwriting.

3.2 Student Housing

3.2.1 Existing Housing

150 Boylston Street (Piano Row Residence Hall)

The Piano Row Residence Hall houses 564 students and includes the Bobbi Brown and Steven Plofker Gymnasium, which includes a NCAA-sized basketball court located on the lowest level along with athletic offices, and locker facilities on the mezzanine. The Max Mutchnick Campus Center is located on the first level below grade with portions on the ground and second floors. Residential suites occupy a portion of the second floor, the third through the 14th floors, and includes a dining cafe on the second floor.

100 Boylston Street (Colonial Residence Hall)

The Colonial Residence Hall houses 364 students on floors two through ten and includes rooms for Resident Assistants and one Resident Director's apartment.

555 Washington Street (Paramount Center Residence Hall)

The Paramount Center, a mixed-use facility includes student housing for 262 students on floors six through ten. A small student café is located in the basement.

2 Boylston Place Residence Hall

Opened in fall 2017, 2 Boylston Place Residence Hall provides housing for 380 students and includes common space for students, a café accessible to the public on the ground floor and an outdoor terrace on the 14th floor.

80 Boylston Street (Little Building closed for renovations)

The Little Building was closed in May 2017 for a major renovation that will provide housing for 1,044 students (an addition of 294 new beds), with a scheduled completion date in fall, 2019.

3.2.2 Support Provided to Off-Campus Students

The office of Off-Campus Student Services (OCSS) provides programs and services designed for students who commute to campus. In addition to providing assistance with Off-Campus housing, the office publishes *The Traveler*, a newsletter for Emerson commuters and administers the student MBTA pass program. All commuting students, as well as staff can utilize Ridematching, a commuter matching service administered for the College by Transaction Associates.

3.2.3 Rules and Regulations

The rules and regulations include the statement of campus rights and responsibilities in addition to the student code of conduct. The College handbook includes information on Title IX, conduct board procedures and a list of campus and community resources.

3.2.4 Impact on the Surrounding Neighborhoods

The number of full-time undergraduates who live off campus fluctuates and numbers approximately 1,500 students, depending on factors such as leaves and transfers in any given semester. While there is no specific data on their impact on the rental market, the widespread geographical distribution of off-campus students in Allston, Brookline, Brighton, Back Bay,

Beacon Hill, Midtown, the Fenway, Somerville, Cambridge, the North End and the South End would suggest that their impact on any specific neighborhood is negligible.

3.2.5 Current Housing

The College recognizes that living on campus enhances students' educational and social development, facilitates student and faculty interaction, and provides a cost-effective alternative to increasingly limited and expensive off-campus housing. **Table 1-6** refers to Emerson College's current housing.

Table 1-6
Current Housing

Building	Number of Beds
12 Hemenway Street (Leased Space through July 2019)	115
Piano Row Residence Hall	564
The Paramount Center	262
The Colonial Residence Hall	364
2 Boylston Place Residence Hall	380
Total Number of Beds	1685

3.2.6 Short Term Housing Plan

Currently, with the closing of the Little Building dormitory for renovations, the College increased capacity in the Piano Row Residence Hall for students in addition to temporarily leasing space at 12 Hemenway Street for 115 students. The Little Building will reopen in Fall, 2019 with housing for an additional 294 students, giving the College the capacity to house all freshmen, sophomores and juniors on campus.

3.3 Employment

The College is planning for minimal growth over the next 10 years. Our current workforce population is outlined below and disaggregated by faculty/staff, full-time/part-time, contract employees, and Boston residents/non-residents.

Current Faculty Employment:

Full-time: 202

Part-time: 39

Full-time FTE: 202

Part-time FTE: 19.5

Current Staff Employment:

Full-time: 570

Part-time: 46

Full-time FTE: 570

Part-time FTE: 22

Current Contract Employees:

Full-time: 11

Part-time: 95

Full-time FTE: 11

Part-time FTE: 47.5

Employees	City of Boston Residents	Non-Boston Residents
Full Time Faculty	66	137
Part Time Faculty	11	28
Full Time Staff	172	398
Part Time Staff	13	33

SECTION 4.0
PROPOSED INSTITUTIONAL PROJECTS

4.0 PROPOSED INSTITUTIONAL PROJECTS

4.1 171-172 Tremont Street Interior Renovations

The College purchased this vacant property in November 2017, and plans to renovate the interior space for student support services to include a cultural center, health services center, spiritual life center, meeting space and a counseling center. This interior renovation project will start in late summer/early fall 2018, with an estimated completion date of winter 2019.

The existing four-story structure at 171-172 Tremont Street is located in the Midtown Cultural District at the corner of Tremont and Avery Streets. It is directly adjacent to the recently opened Emerson Media Art Gallery and strategically located an equal distance between the Little Building and the Paramount Center. The property is centrally located where our students already traverse to and from other campus buildings and will allow the College to improve the day-to-day functionality of the campus and create a more place-based experience for students.

The re-opening of this building will enhance the vitality of the corner at Tremont and Avery Street by the increased activity of students and staff. The exterior façade will be noticeably brighter and more attractive with continued maintenance on a regular basis.

The approximate project dimension are outlined below:

Total Existing Gross Square Footage	17,100
Total Existing FAR Square Feet	3.7
Total Lot Area	4,438
Number of stories/building height	4/67'

Refer to site plan and floor plans in Appendix B.

The costs for interior renovations at 171-172 Tremont Street is approximately \$2,000,000 with an estimated timeline of 6 to 8 months to complete the project.

4.2 Proposed Future Projects

4.2.1 150 Boylston Street Fitness Center Relocation

Currently located in leased space at 52 Summer Street, the College's fitness center will relocate to the Piano Row Residence Hall located at 150 Boylston Street. The approximate gross square footage of the fitness center will be 11,470 square feet that will include part of the ground floor and lower level. The estimated start date is summer 2018, with a completion date of summer 2019.

4.2.2 216 Tremont Street, Roof Replacement

The project entails removing the existing rubber membrane roofing system and replacing it with a new PVC welded seam reflective roof. This project is expected to start in 2019 and be completed in fall of 2020, with an estimated cost of \$600,000.

4.2.3 216 Tremont Street, Sidewalk Repair

The project entails replacing the sidewalk immediately adjacent to the Union Warren Savings Bank building owned by the College. New structural steel and concrete will be installed along with resetting of the granite curbs. This project, approved by the Public Improvement Commission (PIC), is expected to start and finish in the summer of 2019 with an estimated cost of approximately \$100,000.

4.2.4 Rotch Playground, Turf Replacement

The project consists of replacing the artificial turf surface at Rotch Playground, while also upgrading the existing lighting system with LED lights and adding softball/baseball dugouts. The entire project will begin in July of 2018, with a minimum estimated cost of \$1,185,000.

SECTION 5.0
TRANSPORTATION AND
PARKING MANAGEMENT

5.0 TRANSPORTATION AND PARKING MANAGEMENT

5.1 Neighborhood Impacts

The College understands the impact residence hall move-in can have on the surrounding community and takes active measures to ensure minimal disruption and a positive experience for all involved. The College has established successful move-in plans for the residence halls located at 80, 100, 150 Boylston Street, 2 Boylston Place and 555 Washington Street. A similar plan for 12 Hemenway Street includes professional staff stationed to assist students in unloading and moving into the property. Resident students are assigned a specific period of time, by alpha or floor during the time frame of 8:00 am - 4:00 pm. Students are instructed to be prepared to unload their belongings and have their vehicle moved (idling is not permitted). Students and their families are provided with a list of local parking facilities they may utilize.

Emerson College Police Department work with the Boston Transportation Department (BTD) to post signage and secure necessary permits in addition to coordinating with the Boston Police Department with police details to help with pedestrian and traffic flow.

For those Emerson students who reside in temporary housing at 12 Hemenway Street, the College offers shuttle service between 12 Hemenway Street and 150 Boylston Street. The shuttle is a 15-passenger van that operates daily from 11:00 pm to 3:00 am. The College provides all residents at 12 Hemenway Street with a MBTA T-pass to travel to campus. All college and residence hall policies will remain in effect for students living at this location. Three parking spaces are included in the lease is utilized by the Resident Director, Facilities, and Emerson College Police Department. Students residing at this property are returning students, not freshmen. To minimize traffic impacts, the Office of Housing and Residence Life selects students to reside at this location who do not have a vehicle.

5.2 Student Transportation

The proposed institutional project is located in the Midtown Cultural District between two other campus buildings, the Paramount Center and the Little Building. Since the Project will not involve any changes to enrollment or parking, it is not anticipated that the Project will significantly alter vehicular or pedestrian trips to and from campus.

SECTION 6.0
OTHER

6.0 OTHER

6.1 Public Notice

Emerson College will prepare and submit a Public Notice of the submission of the Institutional Master Plan (IMP) Amendment to the Boston Planning and Development Agency (BPDA) as required by Section 80A-2 of the Code. This notice shall be published within five (5) days after the receipt of the IMP Amendment by the BPDA. As part of this Amendment, Emerson College seeks a 3-year extension and renewal of the current IMP effective from the Boston Zoning Commission approval of this Amendment.

6.2 Zoning

The proposed project is located within the Midtown Cultural District/Theatre District governed by Article 38 of the Boston Zoning Code. Development impact payments are not applicable on this project.

6.3 Safety

Emerson College Police Department has several systems in place to oversee the safety of the Emerson community (faculty, staff and students) on campus.

- There is a campus-wide emergency notification system in place whereby faculty, staff and students are notified through phone calls, email, and text messages of a potential emergency situation.
- Perform foot and vehicle patrols 24/7 in our facilities and on the streets, sidewalks and alleys immediately adjacent to our buildings. The College also provides safety escorts by foot and vehicle 24/7.
- Utilize state-of-the-art security technology: 160 cameras covering the entrances, adjacent streets, sidewalks and alleyways; panic alarms, ability to remotely lock down the Campus Facilities' exterior doors within second of being notified of a threat.

- Contract Security Guards at the entrances of our buildings enforcing the College's strict Access Control Policy through the Tap & Go technology that identifies all individuals attempting to enter the campus buildings.
- Provide a number of different training courses: Safety Workshops, Self Defense Training, Active Shooter Training (ALICE), CPR/AED Courses.

6.4 Sustainability

Emerson College signed on to the American College and University President's Climate Commitment in 2009 and has set a goal of reaching carbon neutrality by 2030. Emerson originally drafted a Climate Action Plan in 2009 and is currently updating the plan to incorporate resiliency and adaptation into the new plan to be published in fall 2019. Efforts to mitigate carbon emissions include:

- Converting the majority of campus buildings to be serviced by Veolia 'green steam' for heat and hot water.
- Purchasing 25 million kilowatt hours of unbundled wind RECs from Renewable Choice Energy annually since 2015, equivalent to more than 100% of electricity consumption.
- Implementing single stream recycling across campus and compost in our dining and event centers in 2014.
- Partnering with Eversource to implement energy saving programs that include: LED lighting, building automation systems, and re-commissioning older buildings.
- Construction Leadership in Environmental Design (LEED) certified buildings. The College currently has 4 LEED buildings with the Little Building seeking LEED Gold when it reopens in summer 2019.
- Facilitating annual move out drives to promote upcycling and reuse, saving an average of 2 tons from the landfill each year.
- Supplying students with meal plans with reusable to-go boxes to decrease the consumption and disposal of single use containers.

Emerson has a full time Sustainability Coordinator who works with students, faculty and staff to promote the College's green initiatives. Additionally, the Sustainability Coordinator supervises a

student Eco Rep program to further engage students in sustainability efforts. The College offers an Environmental Studies Minor through the Institute for Liberal Arts and Interdisciplinary Studies. The College has a Campus Sustainability Committee that meets regularly consisting of students, staff and faculty, as well as a Climate Commitment Task Force consisting of senior leadership that steer the Climate Action Plan update.

Emerson has been listed as part of EPA's "Green Power Partnership Top 30 College & University" list from 2015 to 2017 for our REC purchases relative to our size, and is recognized on the Princeton Review's Green College list. The College participates in a number of sustainability consortiums including the Boston Green Ribbon Commission, the Association for the Advancement of Sustainability in Higher Education (AASHE), and the Northeast Campus Sustainability Consortium (NECSC).

6.5 Public Benefits

6.5.1 Rotch Field

Through an innovative public/private partnership between Emerson College and the Boston Parks and Recreation Department, a once neglected playground in the South End became a new sports facility for the benefit of the community and the College. Since Rotch Playground opened 15 years ago, the sports field is used for Little League baseball, sports clinics, summer camps, youth soccer and other permitted activities. The College utilizes the field for the men's and women's soccer, lacrosse and softball teams.

The College is planning to replace the artificial turf at Rotch Playground, while upgrading the existing lighting system with LED lights and adding softball/baseball dugouts. The entire project will begin in July 2018, with a minimum estimated cost of \$1,185,000.

6.5.2 Community Service

Emerson is a diverse community of students, faculty and staff dedicated to leadership in communication and the arts. Many in Emerson's community contribute their time and expertise to support worthwhile institutions and programs in the neighborhood surrounding the College and throughout the Boston area. Please refer to **Appendix E** for the latest Community Service Report, which highlights the College's community service activities.

6.6 PILOT Payments

Emerson College has maintained payments to its PILOT agreement with the City and would offer to meet with the Assessing Department to further discuss the program.

APPENDIX A
SCOPING DETERMINATION



May 31, 2018

Margaret Ings
Office of Government and Community Relations
Emerson College
120 Boylston Street
Boston, MA 02116

Re: **Scoping Determination for proposed Emerson College Institutional Master Plan Amendment, 72 Tremont Street**

Dear Ms. Ings:

Please find enclosed the Scoping Determination for the proposed Amendment and Renewal to the Emerson College Institutional Master Plan ("IMP"). Emerson College plans to add 172 Tremont Street to the Emerson College IMP Area. The Scoping Determination describes information required by the Boston Planning and Development Agency ("BPDA") in response to the Institutional Master Plan Project Notification Form ("IMPNNF"), which was submitted under Article 80D of the Boston Zoning Code on April 27, 2018. Additional information may be required during the course of the review of the proposal.

If you have any questions regarding the Scoping Determination or the review process, please contact me at (617) 918-4425.

Sincerely,

A handwritten signature in blue ink, appearing to read "Katelyn Sullivan".

Katelyn Sullivan
Senior Project Manager

CC: Jonathan Greeley, BPDA
Jerome Smith, Mayor's Office of Neighborhood Services

**BOSTON REDEVELOPMENT AUTHORITY
D/B/A BOSTON PLANNING & DEVELOPMENT AGENCY**

SCOPING DETERMINATION

FOR

EMERSON COLLEGE, INSTITUTIONAL MASTER PLAN AMENDMENT, 72 TREMONT STREET

On April 27, 2018, Emerson College ("Emerson") submitted to the Boston Planning & Development Agency ("BPDA"), an Institutional Master Plan Project Notification Form ("IMPNF") for the purposes of amending the Emerson College Institutional Master Plan ("IMP"). The IMPNF describes a proposal to add a building to the Institutional Master Plan overlay area, as well as add a new Proposed Institutional Project to the Emerson Institutional Master Plan. The building property is owned by Emerson College and is located at 172 Tremont Street in the Midtown Cultural District, ("Proposed Institutional Project"). The site includes an existing four-story structure of 17,752 gross square feet with a 4,438 square foot development site located at the corner of Tremont and Avery Streets. The Proposed Institutional Project consists of interior renovations to an existing four-story building for support services to include the following institutional uses: a cultural center, health services center, spiritual life, meeting space, and a counseling center. Emerson is also seeking a three year IMP Renewal.

Copies of the IMPNF were made available to the public in both electric and hard copy format. A scoping session was held on May 16, 2018 with public agencies and Task Force/community meetings were held on May 15, 2018 and May 22, 2018 at which the Proposed Project, as outlined in the IMPNF was presented. The comment deadline for the IMPNF was May 29, 2018. Comment letters are included in Appendix 1 (Comments from Elected Officials), and Appendix 2 (Comments from the Public).

The BPDA will review the proposed IMP Amendment pursuant to Section 80D of the Boston Zoning Code ("Code"). As part of the BPDA's Article 80 Review, Emerson is required to prepare and submit to the BPDA a proposed IMP Amendment pursuant to Section 80D. The document must set forth in sufficient detail the planning framework of the institution and the cumulative impacts of the project included in the IMP Amendment to allow the BPDA to make a determination about the merits of the proposed IMP Amendment. At other points during the public review of the IMP Amendment, the BPDA and other City agencies may require additional information to assist in the review of the Proposed IMP Amendment.

Emerson will be responsible for preparing and publishing in one or more newspapers of general circulation in the City of Boston a Public Notice of the submission of the IMP Amendment to the BPDA as required by Section 80A-2. This Notice shall be published within five (5) days after the receipt of the IMPA and any other materials.

SUBMISSION REQUIREMENTS

FOR

EMERSON COLLEGE'S INSTITUTIONAL MASTER PLAN AMENDMENT

The Scope requests information required by the BPDA for its review of the proposed Emerson College Institutional Master Plan Amendment ("IMP Amendment") in connection with the following:

1. Approval of the Emerson College IMP Amendment pursuant to Article 80D and other applicable sections of the Boston Zoning Code.
2. Recommendation to the Zoning Commission for approval of the Emerson College IMP Amendment

The Emerson College IMP Amendment should be in compliance with the submission requirements of Article 80D. The Emerson College IMP Amendment should be documented in a report of appropriate dimensions and in presentation materials which support the review and discussion of the IMP Amendment at public meetings. Ten (10) hard copies of the full report should be submitted to the BPDA, in addition to an electronic version in .pdf format. The IMP Amendment should include a copy of this Scoping Determination. The IMP Amendment should also include the following elements:

1. MISSION AND OBJECTIVES

- **Organizational Mission and Objectives.** Describe the Emerson College's institutional mission and objectives, and describe how this proposed project advances the stated mission and objectives.

2. EXISTING PROPERTY AND USES

The IMP Amendment should present maps, tables, narratives, and site plans, as appropriate, clearly providing the following information:

- **Owned and Leased Properties.** Provide an inventory of land, buildings, and other structures in the City of Boston owned or leased by Emerson College as of the date of submission of the IMP Amendment, with the following information for each property that is owned or under agreement:
 - Use(s).
 - Building gross square footage and, when appropriate, number of dormitory beds or parking spaces.
 - Building height in stories and, approximately, in feet, including mechanical penthouses.

3. CAMPUS DEMOGRAPHICS AND EMPLOYMENT

- **Student Population.** The IMP Amendment should provide an explanation of past trends and future projections of the size and other characteristics of Emerson College’s student body.
- **Employment.** Provide Emerson College’s current employee population, disaggregated by faculty/staff, full-time/part-time, contract employees, Boston residents/non-residents, as well as projected employment over the remaining term of the Institutional Master Plan (IMP).

4. PROPOSED INSTITUTIONAL PROJECT

- **Article 80D Requirements.** Pursuant to Article 80D, the IMP Amendment should provide the following information for the Proposed Institutional Project:
 - Site location and approximate building footprint.
 - Uses (specifying the principal subuses of each land area, building, or structure, such as classroom, laboratory, parking facility).
 - Square feet of gross floor area.
 - Square feet of gross floor area eliminated from existing buildings through demolition of existing facilities.
 - Floor area ratio.
 - Building height in stories and feet, including mechanical penthouses.
 - Parking areas or facilities to be provided in connection with Proposed Projects;
 - Any applicable urban renewal plans, land disposition agreements, or the like.
 - Current zoning of site.
 - Total project cost estimates.
 - Estimated development impact payments.
 - Approximate timetable for development of proposed institutional project, with the estimated month and year of construction start and construction completion for each.
- **Rationale for Proposed Project.** Discuss the rationale for the program of the Proposed Institutional Project in light of earlier discussions on mission, facilities needs, and campus planning objectives.

5. TRANSPORTATION AND PARKING MANAGEMENT

- **Neighborhood Impacts.** Move-in/move-out days at Boston’s many institutions of higher learning can be disruptive to neighbors. The IMP Amendment should provide details on how Emerson College can mitigate those impacts on the surrounding neighborhood.
- **Student Transportation.** The IMP Amendment should discuss Emerson College’s strategy for transporting students to and from campus.
- **Boston Transportation Department.** Please refer to the Boston Transportation Department’s comment letter.

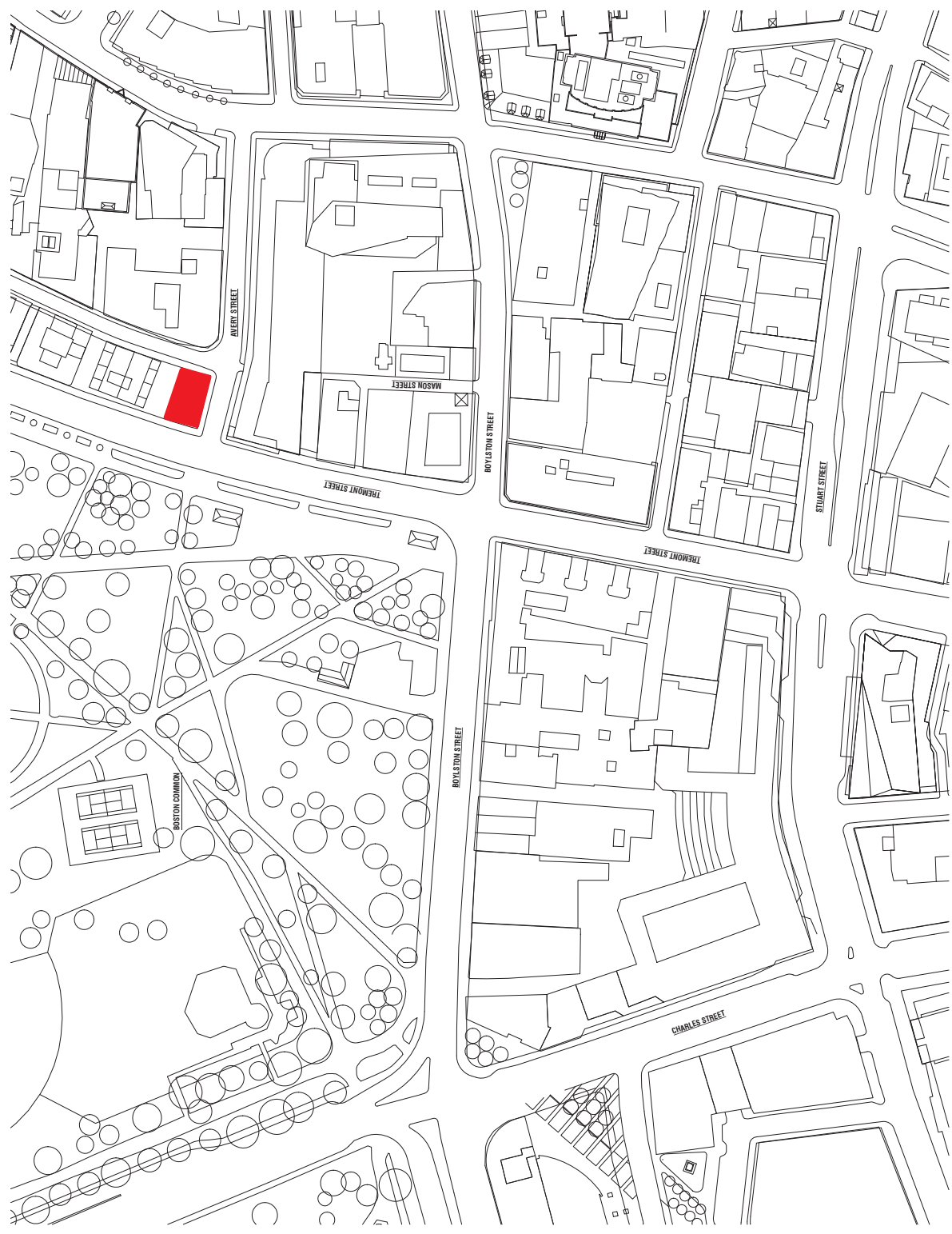
6. OTHER

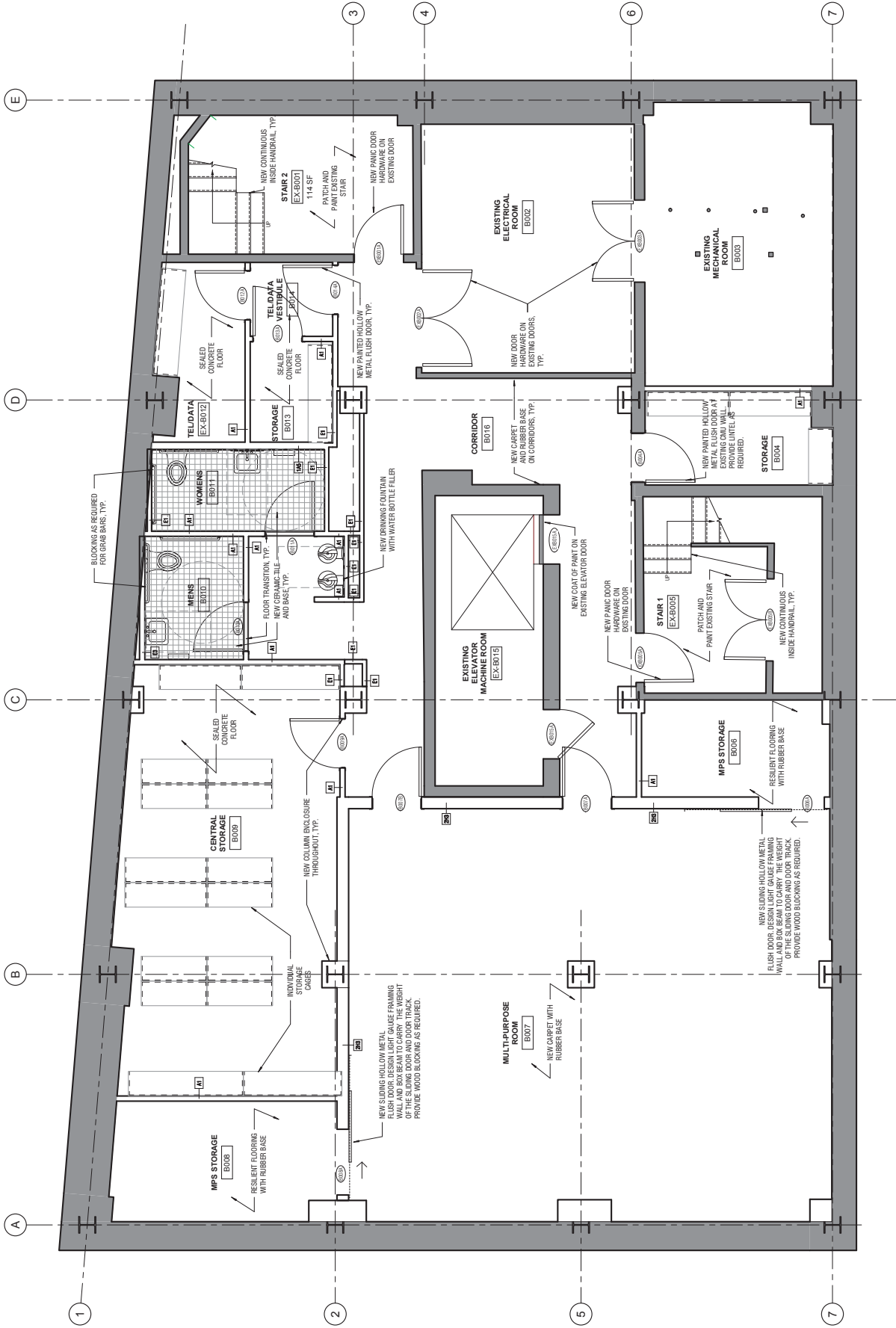
- **Public Notice.** Emerson College will be responsible for preparing and publishing in one or more newspapers of general circulation in the City of Boston a Public Notice of the submission of the IMP Amendment to the BPDA as required by Section 80A-2 of the Code.

This Notice shall be published within five (5) days after the receipt of the IMP Amendment by the BPDA. In accordance with Article 80, public comments on the IMP Amendment shall be transmitted to the BPDA within sixty (60) days of the publication of this Notice. A sample form of the Public Notice is attached as Appendix 3. Following publication of the Public Notice, Emerson College shall submit to the BPDA a copy of the published Notice together with the date of publication.

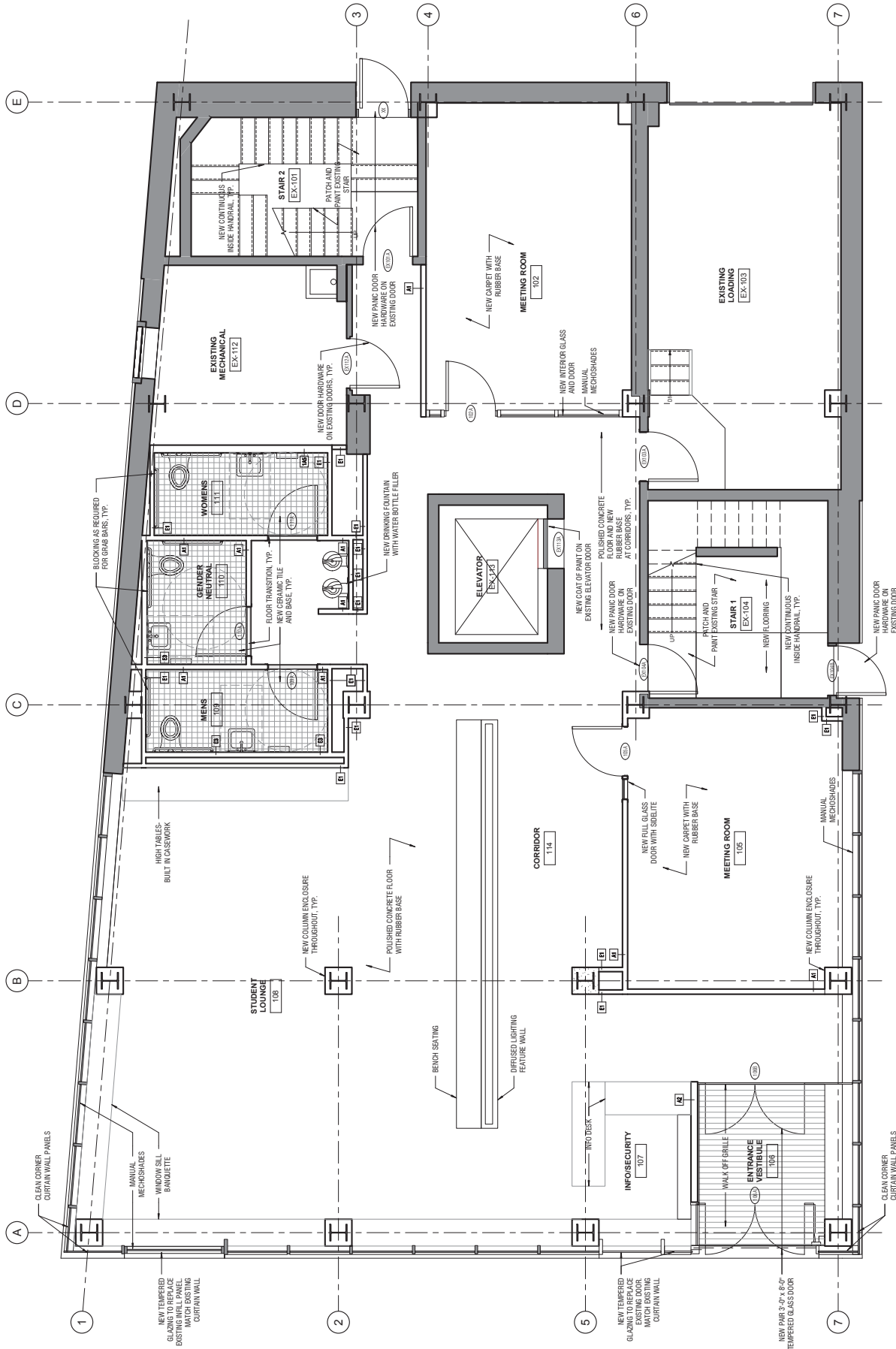
- **Safety.** The IMP Amendment should discuss Emerson College's Strategy for keeping students safe while on campus.
- **Sustainability.** The IMP Amendment should describe Emerson College's past and present sustainability initiatives and future commitment to reducing its environmental impacts.
- **Public Benefits.** The IMP Amendment should describe Emerson College's public benefits to the City of Boston and its residents.
- **PILOT Payments.** Emerson College should initiate a meeting with the Assessing Department to discuss the PILOT program.

APPENDIX B
SITE PLAN AND FLOOR PLANS

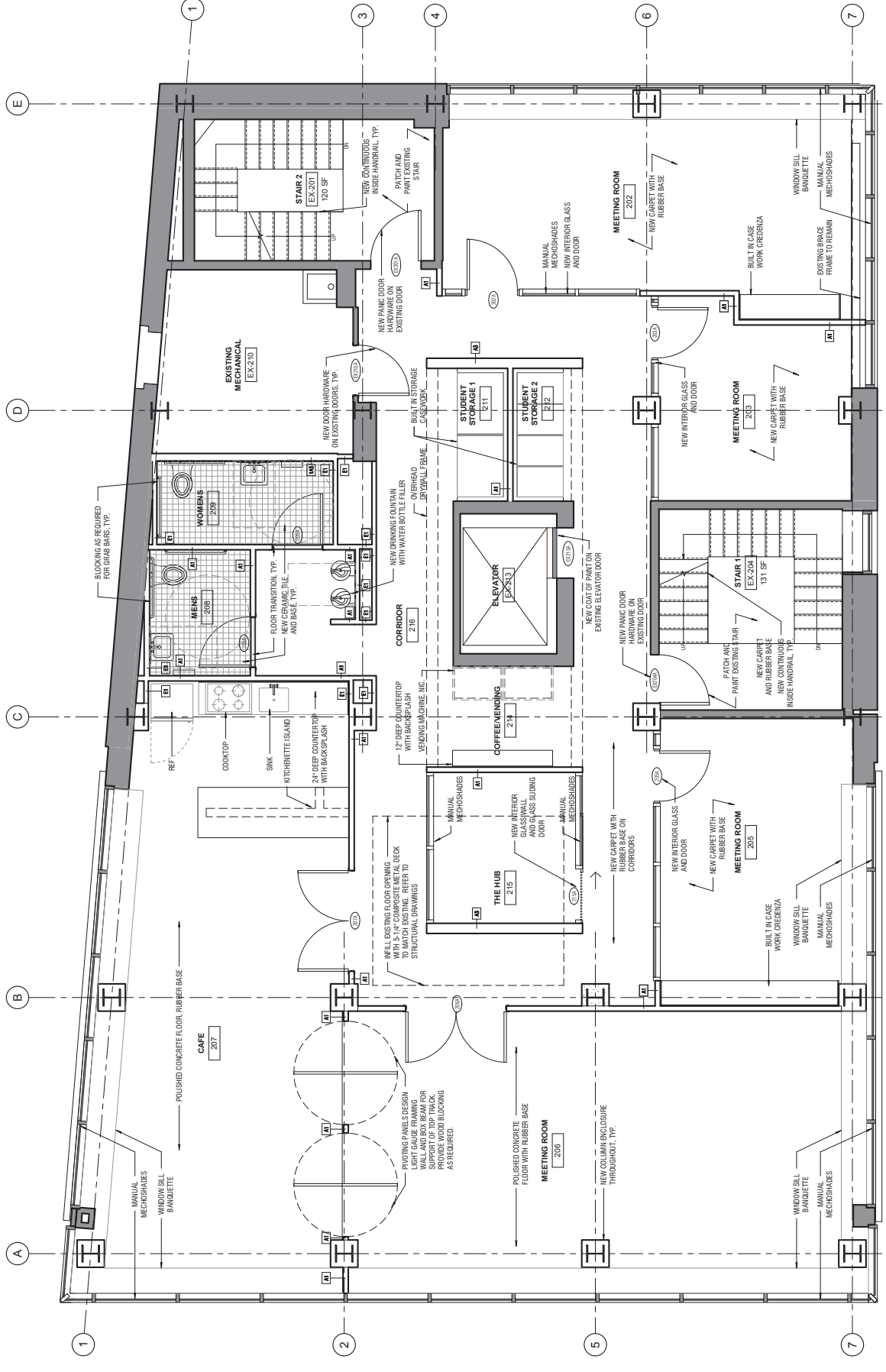




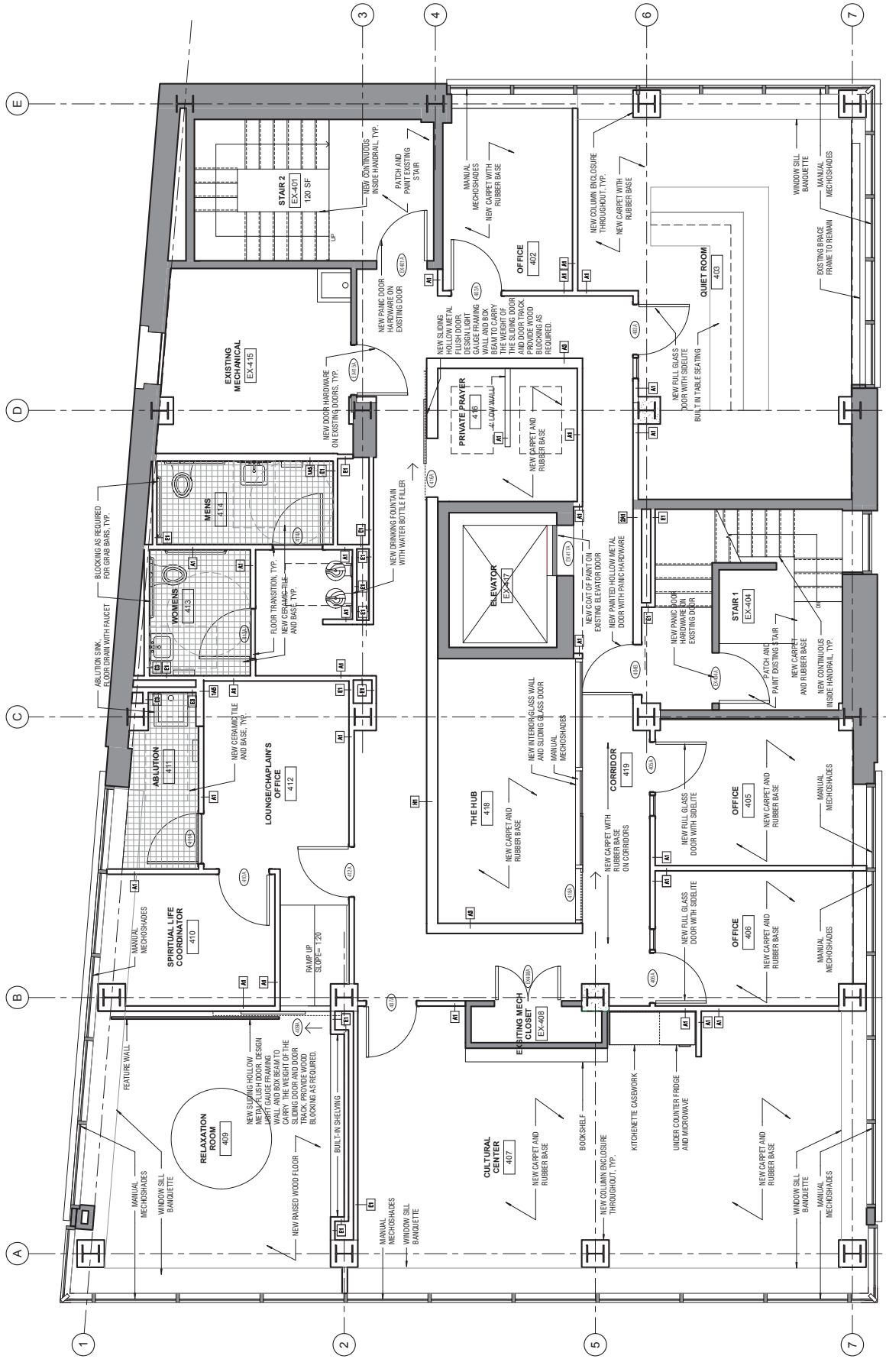
1 FLOOR PLAN - BASEMENT
SCALE: 1/8" = 1'-0"



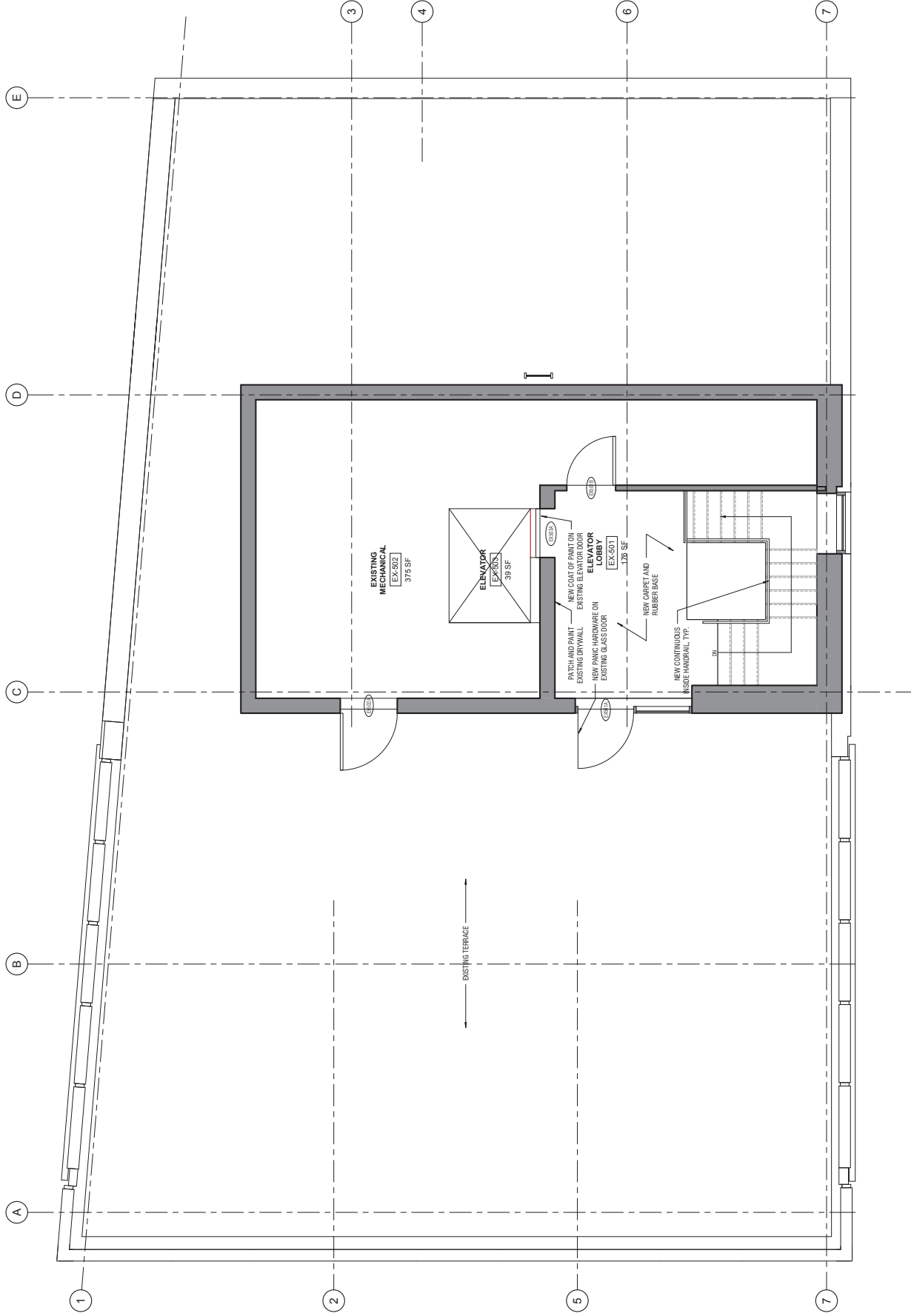
1 FLOOR PLAN - LEVEL 1
SCALE: 1/8" = 1'-0"



1 FLOOR PLAN - LEVEL 2
 SCALE: 1/8" = 1'-0"



1 FLOOR PLAN - LEVEL 4
SCALE: 1/8" = 1'-0"



1 FLOOR PLAN - TERRACE

SCALE: 1/8" = 1'-0"

APPENDIX C
COMMENT LETTERS FROM ELECTED OFFICIALS
AND RESPONSES

APPENDIX D
COMMENT LETTERS FROM THE PUBLIC AND
RESPONSES



BOSTON
TRANSPORTATION
DEPARTMENT

ONE CITY HALL SQUARE • ROOM 721
BOSTON, MASSACHUSETTS 02201
617-635-4680 • FAX 617-635-4295

May 31, 2018

Brian Golden, Director
Boston Planning & Development Agency
One City Hall Square, 9th Floor
Boston, MA 02201

RE: Institutional Master Plan Project Notification Form: Emerson College

Dear Mr. Golden,

Thank you for the opportunity to comment on the Emerson College Institutional Master Plan Project Notification Form (IMPPNF). The IMPPNF proposes the renovation of an existing four-story building at 172 Tremont Street for College support services, as well as a three-year extension and renewal of the College's current Institutional Master Plan (IMP).

172 Tremont Street

Emerson College is permitted by the Boston Planning and Development Agency (BPDA) for a 16-story, 54,454 gross square foot residential building on this site. At this time, the College is proposing to not build that building, but rather to renovate the existing building. This renovation would change uses from an empty building to support services for campus users.

An existing loading dock on Mason Street would be preserved in this project. Mason Street is a two-way street with no parking on either side at 172 Tremont. The proponent should spell out the operations of this loading dock, including: dimensions; the maximum size of vehicle that would fit in the dock without blocking the sidewalk; how the College proposes to manage vehicles using the loading dock or attempting to stop in the no-stopping zone on Mason Street; hours of delivery; and anticipated frequency of use.

There is no proposal for parking, and BTD supports Emerson College's policy of not building parking at their projects. We would encourage the College to consider how their users would access the building. For example, we would suggest that Emerson College propose publicly-accessible sidewalk bicycle parking abutting the building, as well as secure bicycle parking for staff and visitors inside the building, both looking to the BTD Bike Rack Installation Guidelines.

Overall, the Boston Transportation Department (BTD) sees no other major issues with this proposal.

Extension and Renewal of the College's IMP

MARTIN J. WALSH, Mayor

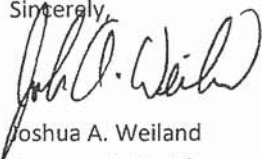
The current IMP dates to 2002, having been extended several times in the last decade. Conducting the analysis and introspection required by an IMP has several benefits in BTB's opinion. Solely from a transportation point of view, an IMP would give an understanding of and develop plans for such topics as how people get to and around the College; how curbs are used; transportation demand management (TDM) policies; and delivery.

For these reasons, while BTB is amenable to this three-year IMP extension, we encourage Emerson College to use these three years to develop a new robust IMP. As part of this process, BTB would encourage the College to investigate the following over the next three years:

- How does the College community, including students, staff, and other visitors, get to the College? The question also applies to ArtsEmerson performers, crew, support staff and attendees. A set of surveys for these groups might be appropriate, including questions on where people are coming from; mode of travel; if they drove, where they parked; whether they took a ride hailing/Transportation Network Company (TNC); what policies or programs might influence their travel decisions; etc.
- The number of parking spaces that the College has, or has access to in garages/lots not owned by the College, and who is allowed to park there, and under what pricing and timing schemes. An understanding of publicly available off-street parking in the area and whether College community is using it.
- What Transportation Demand Management (TDM) schemes are currently in effect, and what might the College propose to encourage more people to walk, bike or take transit? These could include subsidizing employee and student transit and bike share; parking cash-out; on-site child care; and many more.
- Information on location/count of bicycle parking, and who is able to use it. This should include on-street bicycle parking abutting the College, secure bicycle parking, and any other formal or informal locations where the College knows its students, staff or visitors store bicycles while at the College.
- Information on any shuttles, including who administers the shuttles, ridership, routing, who is allowed to ride, pricing, and where the shuttles pull over.
- Pedestrian connections and quality in the area of the College. An understanding of pedestrian flows/desire lines in the area, and any proposals to improve or create pedestrian connections.
- Information on delivery/loading/commercial/service vehicles at the College, where and when this activity takes place, and how it relates to on-street commercial/loading spaces in the area.
- Survey of curbside use, including pickup and dropoff by taxis and TNCs, in addition to on-street parking regulations and utilization.
- Trip generation and associated transit and intersection capacity analyses for all modes.
- The Green Line runs adjacent to the College. The College should engage with the MBTA to understand whether there are any areas where they might need access to their underground facilities for such important reasons as fire suppression; emergency egress; and access for persons with disabilities.

We look forward to working with Emerson College and the BPDA in refining and developing this scope.

Sincerely,



Joshua A. Weiland
Transportation Planner

Boston Transportation Department

Cc: Vineet Gupta, Director of Policy and Planning
John DeBenedictis, Director of Engineering



June 12, 2018

Joshua A. Weiland
Transportation Planner
Boston Transportation Department
One City Hall Square, Room 721
Boston, MA 02201

**RE: Emerson College Institutional Master Plan Project Notification Form (IMP NF)
171-172 Tremont Street Interior Renovation Project
Extension and Renewal of the Current Institutional Master Plan**

Dear Mr. Weiland:

Emerson College is in receipt of your May 31, 2018, letter to Brian Golden, Director of the Boston Planning and Development Agency, commenting on the College's interior renovation project to an existing four-story building located at 171-172 Tremont Street in the Midtown Cultural District.

As part of the Emerson College Institutional Master Plan (IMP) Amendment filed with the Boston Planning and Development Agency (BPDA), on June 12, 2018, the College will be requesting a three-year extension and renewal of the current Institutional Master Plan. During this time, the College will prepare a comprehensive master plan of the campus including a detailed transportation assessment and a review of your recommended scope.

The College continues to be in compliance with the Massachusetts Rideshare regulations to survey the staff and students every two years. The staff and eligible commuting students were surveyed in March 2018, as is required by the Massachusetts Department of Environmental Protection (DEP). The survey results demonstrated the College had an 8.8% "drive-alone" rate, one of the lowest of all institutions in Massachusetts.

Since the proposed project will not involve any changes in student enrollment, and no parking will be provided, it is not anticipated the project will significantly change vehicular or pedestrian trips to and from campus.

Sincerely,

Margaret A. Ings
Vice President

BRA MEMORANDUM

TO: Katelyn Sullivan, Senior Project Manager
FROM: Elizabeth A. Stifel, Senior Architect/Urban Designer
DATE: May 29, 2018
SUBJECT: **Emerson College**
Institutional Master Plan/Project Notification Form

URBAN DESIGN COMMENTS

Background

Emerson College filed their Institutional Master Plan Project Notification Form on April 27, 2018. The IMP/PNF describes five proposed IMP Projects; 172 Tremont Street Interior Renovations, 150 Boylston Street Fitness Center Relocation, 216 Tremont Street Roof Replacement and Sidewalk Repair, and Rotch Playground turf replacement. The 172 Tremont Street Interior Renovations are the project directly addressed in the IMPNF.

More information should be provided for each project to clarify how the IMP will need to be amended to accommodate it. Additionally, updated base information in the form of a maps of the campus denoting owned and leased properties and their respective square footages and uses should be provided. Information on each future project should include the square footage of each project and a brief section on anticipated exterior impacts.

172 Tremont Street Interior Renovations

As noted above, provide more detailed square footage breakdown for the project. Understanding that it is interior renovation, it still may require BPDA design review so early submission of a design package and/or a meeting with BPDA design review staff to look over the proposed project is encouraged. If there are any exterior changes proposed, for example signage or mechanical changes, those should be addressed in the description.

150 Boylston Street Fitness Center Relocation

See comments on for 172 Tremont Street above.



June 12, 2018

Elizabeth A. Stifel, Senior Architect/Urban Designer
Boston Planning and Development Agency
One City Hall Square
Boston, MA 02201

**RE: Emerson College Institutional Master Plan Project Notification Form (IMPNF)
171-172 Tremont Street Interior Renovation Project
Extension and Renewal of the Current Institutional Master Plan**

Dear Ms. Stifel:

Emerson College is in receipt of your May 29, 2018 letter to Katelyn Sullivan, Senior Project Manager at the Boston Planning and Development Agency, regarding the College's interior renovation project of an existing four-story building located at 171-172 Tremont Street in the Midtown Cultural District.

As part of the submission of the Institutional Master Plan Amendment filed with the Boston Planning and Development Agency, (BPDA), on June 12, 2018, the College has included maps of the campus denoting owned and leased properties with a description of the uses and square footage **Table 1.1-1.5**.

The College has also included in the Institutional Master Plan Amendment the project dimensions, a site plan and floor plans **Appendix B**. As you are aware, a meeting was held at the Boston Planning and Development Agency (BPDA) to review the project on June 7, 2018.

The College looks forward to working with the Boston Planning and Development Agency and other City agencies to implement this project.

Thank you for your time and consideration regarding this project.

Sincerely,

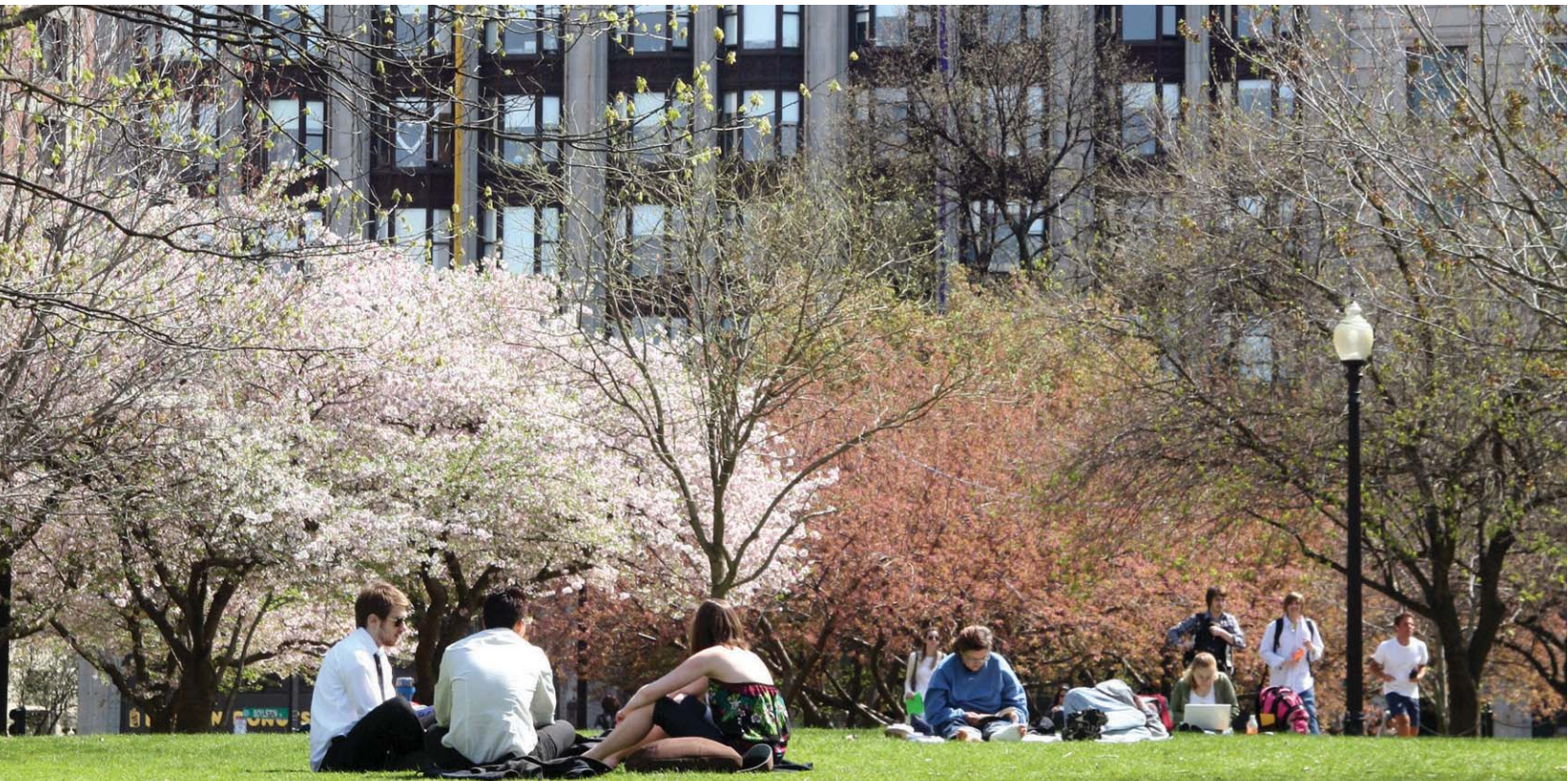
Margaret A. Ings
Vice President

APPENDIX E
COMMUNITY SERVICE REPORT

Community Service Report

2015-2016

S h a r i n g C o m m o n G r o u n d



Emerson
COLLEGE

Contents

- 1 Message from the President
- 2 Investing in Boston's Neighborhoods
- 4 Contributing Creativity, Expertise, and Resources
- 6 Bringing Town and Gown Together
- 8 Supporting Those Who Help Others
- 10 Academic Engagement
- 12 Students Reaching Out
- 13 Community Partners

Mission Statement

Emerson College educates students to assume positions of leadership in communication and the arts and to advance scholarship and creative work that brings innovation, depth, and diversity to these disciplines.

This mission is informed by core liberal arts values that seek to promote civic engagement; encourage ethical practices; foster respect for human diversity; and inspire students to create and communicate with clarity, integrity, and conviction.

Emerson College Administration and Governance

Administration

Dr. M. Lee Pelton
President

David Dower
Vice President/Artistic Director
ArtsEmerson

Dr. William Gilligan
Vice President for Information
Technology

James Hoppe
Vice President and Dean for Campus Life

Christine Hughes
Vice President and General Counsel

Margaret A. Ings
Associate Vice President for Government
and Community Relations

Dr. Ronald Korvas
Vice President for Institutional
Advancement

Ruthanne Madsen
Vice President for Enrollment
Management

Maureen Murphy
Vice President for
Administration and Finance

Allison Sampson
Vice President and Executive Director
Emerson Los Angeles

Anne Shaughnessy
Assistant Vice President

Dr. Sylvia Spears
Vice President for
Diversity and Inclusion

Dr. Michael Whelan
Provost and Vice President for
Academic Affairs

President Emerita

Dr. Jacqueline W. Liebergott

Board of Trustees Officers

Jeffrey Greenhawt, Chair
Vincent J. Di Bona, Co-Vice Chair
Al Jaffe, Co-Vice Chair
Steven Samuels, Co-Vice Chair
Michael MacWade, Treasurer
Marilyn Zacharis, Secretary

Board of Trustees Members

Eric Alexander
Daniel Black
Bobbi Brown
Dan Cohen
Robert Friend
Ira Goldstone
Gary Grossman
Doug Herzog
Leo Hindery Jr.
Douglas Holloway
Robert Miller
Andrea Montoni
Susan Namm-Spencer
M. Lee Pelton
Michele Perkins
Patricia Peyton
Marc Reinganum
Linda Schwartz
Raj Sharma

Board of Trustees Emeriti

Justin Lee Altshuler
James Coppersmith
Judy Huret
Richard Janssen
Larry Rasky

To Our Friends in the Boston Community

Emerson College is proud to call Boston its home. Nestled in between the city's historic Back Bay neighborhood and dynamic Theatre District, Emerson helps energize Boston, just as the College is energized by our beloved city.

Boston is more than a geographic location to us. It is our community. And we are deeply committed to this community, and to the communities around the world in which Emerson students study. We are guided by a core conviction that institutions of higher learning have a responsibility to serve their local communities and that partnerships are most meaningful when they are established with an ethic of care, respect, and collaboration.

Emersonians have long been committed to inclusive excellence, social justice, and to using their expertise in and passion for communications and the arts to make a difference. We are motivated by the words of one such Emersonian, renowned civic leader and arts educator Elma Lewis '43, who said, "I have learned to be satisfied to see a tree put its roots down in my lifetime. I may never see the height of the tree, and the flower of the tree."

The pages that follow illustrate beautifully how Emerson students, faculty, and staff are rooted in our local and global communities—contributing in ways that are meaningful today and will continue to be for years to come. This critical work is coordinated through our Elma Lewis Center for Civic Engagement, Learning, and Research, which is a vital link between the College and the communities to which we belong, as well as the Office of Government and Community Relations, which serves as a liaison between the College and government agencies at the local, state, and national level.

Thank you for your support of Emerson College. I look forward to our continued partnerships.

Sincerely,



M. Lee Pelton
President



Investing in Boston's Neighborhoods



Carnegie Foundation Recognition

Emerson College received the Community Engagement Classification from the Carnegie Foundation, being recognized for its high level of commitment to civic and community engagement. Emerson is one of 361 institutions nationwide that now hold the distinguished Community Engagement Classification. In a letter to the College, the Carnegie Foundation stated that Emerson "documented excellent alignment among campus mission, culture, leadership, resources, and practices that support dynamic and noteworthy community engagement." Emerson also provided examples of exemplary institutionalized practices of community engagement.

In 2013, Emerson launched the Elma Lewis Center for Civic Engagement, Learning, and Research, which took the lead in applying for the Community Engagement Classification. The Elma Lewis Center initiates and coordinates civic engagement activities and programs for the College, supports

Emerson's community and school partnerships, fosters discourse on issues of social consequence, and promotes the expansion of service learning and civic engagement.

"Civic engagement is a core feature of what it means to be truly educated in the 21st century," said Emerson President Lee Pelton. "The Community Engagement Classification is a major honor and I am so pleased at the progress we have made to strengthen our already notable commitment in this area."



Youth Leaders Engaging Across Differences (Youth LEAD)

Founded in 2004, Youth LEAD is a nonprofit organization that gives young people the skills to reflect on their identities and values. With the guidance of mentors, they learn to communicate respectfully with people from diverse backgrounds and facilitate dialogue to foster understanding and appreciation of diversity. Teens also direct their own learning through youth-run projects, meetings, and activities.

The Elma Lewis Center for Civic Engagement, Learning, and Research hosted the TIDE 2016 (Teenage Identity and Diversity Education) conference at Emerson College May 27-29, 2016. The theme for the conference was "Lean In: Transforming Conflict Through Communication" with the aim to train participants to "lean in" to difficult conversations around issues of identity, race, gender, class, and religion. Approximately 80 high school students from the East Coast spent a few days at the College to discuss relevant issues of the day in a safe and friendly environment.



Department of Visual and Media Arts

The Bright Lights film series is sponsored by the Department of Visual and Media Arts (VMA) at Emerson College. The mission of the series is to provide engaging visual media-related events to the Emerson College community as well as the wider Boston community.

These events range from screening of student, faculty, and alumni work to the work of local, national, and international artists, as well as lectures and discussions by industry professionals. Bright Lights seeks to create an environment where a dialogue is fostered and a community of media makers, academics, and aficionados are engaged and supported.

VMA partners with more than three dozen internal and external organizations and collaborates on programming and audience engagement. Some of the most significant partners are: Wicked Queer: The Boston LGBT Film Festival, The Boston Latino Film Festival, The Boston Asian American Film Festival, The Boston Palestine Film Festival, The ReelAbilities Film Festival, RAW Artworks, and the UMass Boston Film Series. The film series provides an opportunity for the

Emerson community to engage with the Boston community as well as industry professionals to discuss films released for exhibition in the last two years, ranging from well-known art-house fare to lesser-known festival films that may or may not have screened theatrically in the area.

Office of the Arts

For the past seven years, the Office of the Arts has opened its doors and provided access for community artists, producers, and organizers to produce events in ArtsEmerson's downtown spaces. Events range from a live music benefit, to film screenings, to moderated discussions, to a fashion accessibility project for the disabled. In addition to these events, the Office of the Arts engages in a variety of community partnerships that reaches throughout the neighborhoods of Boston.

One particular partnership is ArtsEmerson's Play Reading Book Club (PRBC), a theater literacy and community education program that provides unique access to scripts, artists, and conversations within the theater. It offers participants pre- and post-show opportunities to deepen and expand their experience as audience members through conversations about the literary, artistic, and technical attributes of a play while meeting new people and expanding their cultural network.

Since 2014, participants have gathered and formed a theater-going community throughout the neighborhoods of Greater Boston to read, discuss, and analyze plays prior to seeing them live on our stage and then sharing their experience with family and friends via a community showcase. The program is facilitated by trained teaching artists from the Emerson College MA in Theatre Education program. During the 2015-16 season, the Office of the Arts partnered with the Dudley Branch Library, the Newton Free Library, the Boston Renaissance Charter Public School (BRCPS), and the Cambridge Center for Adult Education to present Play Reading Book Clubs.

Contributing Creativity, Expertise, and Resources

Project Place

In Spring 2016, Emerson Productions, a unit of the Television, Radio, and Film Department, produced a five-minute awareness video for Project Place, a jobs training program for Boston's underserved population. The video debuted at the organization's fundraising gala held in March 2016. Founded in 1967, Project Place began as a dedicated safe haven for runaway teenagers, especially at-risk and drug-addicted youth. In the 1980s, Project Place shifted its role in the community by serving adults and adding drop-in and referral services, including legal services, life skills, advocacy, information, and counseling. As part of its community service mission, Emerson Productions takes on a pro bono video project each year, with Project Place being the first recipient organization.



Grant Funding for Documentary

Emerson College faculty member Bob Nesson, a documentary filmmaker, was awarded a grant in 2015 to develop a new project. Titled *Coping*, it follows men and women as they re-enter society after spending time in prison. Nesson's project received \$10,000 in preproduction funding from Mass Humanities, a nonprofit that offers and funds programs that use history, literature, and other humanities disciplines to improve civic life in the state. The grant was part of Mass Humanities' "Negotiating the Social Contract" initiative, which allows participants to examine today's social contract negotiations, face to face, in the context of a particular issue or set of issues of interest in a particular community or place—such as immigration, sentencing and

imprisonment, affirmative action, political stagnation, participation in the democratic process, or environmental responsibilities.

Coping will follow its subjects as they emerge from behind prison walls, cope with reintroduction to everyday life, interact with family and community, learn skills and technologies new to them, and adjust to the search for housing and jobs. The documentary will be filmed over a period of up to five years and will focus on the Boston area, where Nesson has already been doing research. The film looks to enhance and improve civic life in Massachusetts by directly engaging with those whose lives are affected by historic forces that have led to racism, economic disparities, and shattered families and communities.





Emerson College Police Department Works with ABCD

ABCD's (Action for Boston Community Development) mission is to empower disadvantaged people by providing them with the tools to overcome poverty, live with dignity, and achieve their full potential while teaching skills that contribute to family income and stability.

For the past two years, the Emerson College Police Department (ECPD) has collaborated with ABCD as a worksite placement for youth interested in criminal justice careers. The program offers student interns the opportunity to receive basic skills and training by working with ECPD officers and dispatchers for 10 weeks while they perform their duties. The goal of the Career Exploration program is to educate the students on police operations within a college setting and offer the exposure and training necessary to facilitate a successful entry into a criminal justice or law enforcement career.

St. Patrick's Day Breakfast

For the past three years, Emerson Productions, a unit of the Television, Radio, and Film Department, has produced a segment for State Senator Linda Dorcena Forry for the annual South Boston St. Patrick's Day Breakfast. Forry, who represents South Boston, Dorchester, Mattapan, and Hyde Park, was the first female to host the legendary St. Patrick's Day Breakfast in 2014. Emerson students were given a unique opportunity to get hands-on experience in producing a segment for this event, which draws prominent political figures in the state who come together to exchange light-hearted barbs in a festive atmosphere.

Emerson Engagement Lab

The Engagement Lab is an applied research lab at Emerson College that investigates and creates media and technology to reduce disparities in civic participation. From public health to public streets, the Engagement Lab specializes in playful approaches to data, art, and design.

In March 2016, the Lab launched Climate Smart Boston, a partnership between the Engagement Lab, World Wildlife Fund (WWF), the City of Boston's Greenovate Boston, and Boston Harbor Now. The project was built on the Engagement Lab's Community PlanIt platform, an online game that has been used in a wide array of community engagement processes for planning in the U.S. and internationally.

Funded by WWF, Climate Smart Boston ran for three weeks, March 25-April 15, 2016, during which players completed the online game by giving opinions and answering challenge questions about climate change preparedness while earning "coins" to vote for player-created community projects. The top three proposals with the most community support at the end of the three-week period each received \$500 in funding.

The platform used to build Climate Smart Boston, Community PlanIt, was developed in 2011 and has gone through a number of iterations. Climate Smart Boston is a new opportunity to engage in the City's climate preparedness planning efforts while providing participants with an opportunity to help fund local community projects.



Bringing Town and Gown Together

Cradles to Crayons

During the Fall 2015 semester, the Office of Government and Community Relations and the Elma Lewis Center organized a campus-wide new hats and gloves drive to benefit Cradles to Crayons. This nonprofit based in Quincy, Massachusetts, serves children from birth through age 12 living in homeless or low-income situations with the essential items they need to thrive—at home, at school, and at play. It supplies these items free of charge by engaging organizations such as Emerson College to assist in providing items for underserved populations. Donations are then processed and packaged by volunteers, and are distributed to disadvantaged children across the state through a collaborative network of social service agencies and school partners. Emerson faculty, staff, and students donated more than 600 items, which included hats, gloves, scarves, and warm weather coats.



Annual Departmental Holiday Drives

Each year, a number of departments sponsor holiday drives on campus to benefit various charitable organizations. For the past few years, the recipient organization for the staff and faculty holiday party has been the Pajama Program, a nonprofit organization that provides new pajamas and books to children in need nationwide, many of whom are waiting to be adopted. These children live in group homes, shelters, and temporary housing facilities. The pajamas that were donated by Emerson staff and faculty in December 2016 were sent to the State House to be included in the 2017 Project 351's Day of Service. Student Ambassadors in the 8th grade from each of the 351 cities and towns in Massachusetts assembled emergency bags that included essential items for children in need.

The Max Mutchnick Campus Center holds its annual holiday food drive to benefit the Greater Boston Food Bank. Each year, faculty, staff, and students donate canned and other non-perishable food items. Within the last two years, the College has collected more than 500 pounds of food for donation.

The Emerson College Police Department (ECPD) collects new, unwrapped toys in partnership with the U.S. Marine Corps Toys for Tots program. Since the ECPD staff started participating in this program, they have collected more than 1,000 toys.

Emerson Los Angeles

In Spring 2016, Emerson Los Angeles (ELA) participated in Operation School Bell Prom Day, an annual event sponsored by the Assistance League of Los Angeles and the Los Angeles Unified School District that provides dresses, shoes, and accessories for prom to 85 homeless and low-income high school girls. The event was held at ELA's Bill Bordy Media Conference Center, allowing for a bigger and more enhanced experience. Volunteer seamstresses tailored the young women's dresses to an exact fit while hairstylists and makeup artists provided image consulting. Operation School Bell Prom Day was co-chaired by Linda Levine '77 and Wendy Silver, who spend the year soliciting donations from local corporations and community members.

Community Plantings on the Greenway

The Office of Communications and Marketing and the Office of Institutional Advancement partnered with the Rose Kennedy Fitzgerald Greenway Conservancy with fall plantings. In 2015, staff planted mums in Chinatown Park; in 2016, they planted narcissus bulbs in the Wharf District Parks.

Communication Sciences and Disorders Department

Autism Research Lab

Emerson's Communication Sciences and Disorders Department (CSD) established a new laboratory in 2014 specifically for autism research with the help of a \$1.5 million grant from the National Institute of Health (NIH) awarded to Assistant Professor Ruth Grossman. The four-year grant has provided for state-of-the-art equipment that tracks eye gaze and facial movements with astounding precision. Research at the FACE Lab is focused on understanding and raising awareness about how children on the autism spectrum perceive and produce social cues. Undergraduate and graduate students gain hands-on experience at the lab every year, participating in all aspects of research, including collecting and analyzing eye-tracking, motion capture, and biophysiology data, as well as becoming co-authors on conference presentations and peer-reviewed publications.

Mentoring Program

For the past few years, the CSD Department has partnered with interns from the Science Club for Girls (SCfG) based in Cambridge, Massachusetts. This organization serves to foster interest in science, technology, engineering, and mathematics (STEM) for girls in underserved communities by providing free experiential programs and maximizing meaningful interactions with women mentors in STEM. CSD hosted several SCfG groups for field trips, where girls were introduced to a range of research areas in communication disorders, such as alternative and augmentative communication devices, video-stroboscopy of vocal folds, and eye-tracking. Since 2014, the FACE Lab, as part of CSD, has hosted high school interns from SCfG for year-long internships, where participants are able to get weekly hands-on experience in scientific research.

Robbins Speech, Language, and Hearing Center

For the past two years, the Robbins Speech, Language, and Hearing Center staff and student clinicians have conducted free hearing screenings for students at the Josiah Quincy School in Chinatown. The center also conducted free preschool speech-language screenings of young children (ages 3 to 5) attending various programs throughout the City including Little Folks Daycare in East Boston, St. John's Catholic Church in the North End, the Wang YMCA Daycare in Chinatown, and the John Winthrop preschool in the Back Bay.

WERS 88.9 FM

WERS 88.9 FM partnered with Rosie's Place, founded in 1974 as the first women's shelter in the United States. Its mission is to provide a safe and nurturing environment that helps poor and homeless women maintain their dignity, seek opportunity, and find security in their lives. During WERS's second annual community service fundraiser in 2015, the station raised more than 200 hours of service for Rosie's Place. WERS members, staff, and student volunteers translated those hours into more than 1,000 meals served during March 2016.



Supporting Those Who Help Others

826 Boston

During the Spring 2016 semester, a group of students from the Research Writing class tutored children at 826 Boston, an afterschool program located in Egleston Square in Boston's Roxbury neighborhood. This nonprofit provides free writing and tutoring for Boston student's ages 6 through 18, serving more than 3,500 students and forming partnerships with 150 teachers annually. The programs are designed to motivate students to complete their schoolwork, improve confidence in their writing skills, and foster positive relationships with adult mentors. Emerson students assisted 826 students with reading, writing college essays, and homework assignments on a variety of subjects.

Bird Street Community Center

For the last three years, the Emerson Bird Street Civic Engagement Project has provided a forum for students' personal growth while supporting student change for a better and more fulfilled life. The aim of the project is to listen, mentor, document, and share stories of the Bird Street students, who are at-risk youth from Dorchester and surrounding areas. The Bird Street students actively work alongside Emerson College students and faculty throughout the year on a variety of projects, such as producing PSAs and talent shows and creating design lessons for students.



Massachusetts Immigrant and Refugee Advocacy

In April 2016, the Emerson Bird Street Civic Engagement Project launched the third annual "What's Your Dream" speech contest. The competition challenges and inspires Boston Public School youth to develop a personal essay detailing their unique aspirations and dreams, inspired by a painting of three prominent black leaders: Martin Luther King Jr., Nelson Mandela, and Barack Obama.

The Dream Team painting traveled to select Boston Public Schools. Students from 4th to 12th grade wrote and submitted personal essays at their respective schools. Finalists attended a speech workshop hosted at Emerson College. Essays and speeches were judged by a panel, which in the past has included community leaders and the late Mayor Menino. The first, second, and third place essayists received prizes for their efforts.

Emerson students and staff joined the Massachusetts Immigrant and Refugee Advocacy (MIRA) Coalition at Faneuil Hall on September 17, 2016, to assist upwards of 400 newly naturalized U.S. citizens in registering to vote. Emerson's offices of Diversity and Inclusion, Violence Prevention and Response, and Academic Engagement and Community Action gathered volunteers to solicit the new citizens to register to vote after their swearing-in ceremony. MIRA works to help immigrants and refugees continue to be informed and active participants in government. The organization makes phone calls to voters to remind them of national and local elections and mails information about all active candidates. The event coincided with a screening of *No Le Digas a Nadie (Don't Tell Anyone)*, a documentary film about the struggles of undocumented immigrants, as part of Emerson College's Bright Lights film series.

Day of Service

For the past two years, the Office of Academic Engagement and Community Action and the Office of Off-Campus Student Services have sponsored a Day of Service, a part of Emerson College's Martin Luther King Jr. Week. Volunteer opportunities were available to faculty, staff, and students on campus or at nonprofits located throughout the greater Boston community. Some of the organizations collaborating with the College included St. Mary's Center for Women and Children, the Medeiros Center, Safe Haven in Dorchester, Ethos, Operation Boston Warm, Children's Clothing Exchange in Cambridge, and elementary schools in Dorchester and Roxbury. Volunteers had the opportunity to make scarves for homeless individuals, blankets and fleece hats for infants, and greeting cards; paint rooms; and tutor students while assisting teachers at local Boston elementary schools.



Academic Engagement

Housed in the Elma Lewis Center for Civic Engagement, Learning, and Research, the Office of Academic Engagement and Community Action (formerly known as the Office of Service Learning and Community Action) focuses on the design, execution, and assessment of discipline-specific academic service learning projects. Together with nonprofits and faculty members from all eight of our academic units (Communication Sciences and Disorders, Communication Studies, Journalism, Marketing Communication, Performing Arts, Visual and Media Arts, Writing, Literature and Publishing [including the First-Year Writing Program], and Liberal Arts and Interdisciplinary Studies), the College partners to advance scholarship and creative work that brings innovation, depth, and diversity to these disciplines. Community service as part of coursework is an essential component of Emerson College's mission, reinforcing for students how to incorporate service into everyday life. The College offers a wide range of academic programs that encourage students to channel their skills, talents, and classroom learning into meaningful engagement and community building.

Theatre and Community Conversations

This graduate course pairs Theatre Education students with local nonprofits to engage clients, residents, and/or participants in activities designed to help groups identify their concerns, craft their stories, and amplify their voices.

Introduction to Nonprofit Communication Management

This course provides a foundation in nonprofit communication management and social media communication strategies. Students partnered with the nonprofit HandReach to stage a major fundraising event at the College to benefit the mission of the organization, which offers care for burn survivors worldwide. This collaboration provided students the opportunity to develop leadership, budgeting, event-planning, and professional fundraising skills. The gala event for the first iteration of the course raised \$7,000 for HandReach.

Topics in Creative Writing: Re-visionaries

This class partnered with the Center for Change, a community health center in Dorchester for adults in recovery from addiction and/or in treatment for mental health issues while transitioning from homelessness. The fundamental basis of this class is utilizing art (writing in particular) as a form of advocacy both through personal empowerment and public education. Student efforts help amplify unheard voices that belong in conversations regarding critical matters related to addiction, mental health, and wealth disparity.

Civic Art and Design Studio

In collaboration with the Massachusetts Department of Transportation (MassDOT) and the City of Boston, students in this course researched pedestrian and bike safety issues at the intersection of Boylston and Tremont streets with the goal of sharing ideas for





Students in service learning courses served the following nonprofits:

an artistic, community-informed crosswalk. The class studied contemporary issues around urban mobility in the neighborhood, interviewed current residents and crosswalk users and researched creative crosswalks. Students have a meaningful, hands-on experience while MassDOT and the City engage the public in more creative ways around pedestrian and bike safety. City crews retimed the traffic signals at the intersection to increase the walk cycle by four seconds and Boston Transportation Department officials said they appreciated the students' request, which capped months of research for this class project.

Topics in Communication (Capstone)

Students in this class partnered with Operation Smile, an international medical charity that has provided hundreds of thousands of free surgeries to children and young adults in developing countries who are born with cleft lip, cleft palate, or other facial deformities. As a result, the students developed and executed a public affairs campaign for Operation Smile.

Artists for Humanity
Boston Debate League
Center for Change
Charles River Conservancy
Charlestown High School
Chinese Progressive Association
Daughters of Legacy and Leadership
Exceptional Lives
Gift of Life
Hale House
HandReach
Jumpstart
Massachusetts Immigrant and Refugee Advocacy Coalition (MIRA)
Mission Safe
Mobility Movilidad
Next Mile Project
On With Living and Learning/OWLL
Operation L.I.P.S.T.I.C.K.
Operation Smile
Step Up International
Women's Center at St. Francis House
Wikimedia Foundation

Faculty Members Awarded Grants for Service Learning Projects

The Office of Academic Engagement and Community Action offers funding to faculty members who design community-based projects for their students. Service Learning Innovation Grants cover expenses for service learning projects that inform students on how to use their skills to respond to the needs of local communities.

These grants enable faculty to launch new projects or to maintain creative partnerships with community organizations. The First-Year Writing Program (FYWP) taught Game Design for Social Change, a course that helps students develop research writing skills while working directly with community partners to address their most pressing needs. Students helped collect data and implement creative solutions to problems and needs identified by the community partners.

Students in the Boston Educational Outreach class partnered with Charlestown High School, where students worked directly with youth who speak English as a second language, preparing them for state standardized tests and collaborating on writing projects.

The course Writing for Change taught students to develop research briefs and campaign materials. Students in this class worked with the Charles River Conservancy, Chinese Progressive Association, and the Massachusetts Immigrant and Refugee Advocacy Coalition (MIRA).

Students Reaching Out

Emerson College Athletics

Emerson student-athletes take on a variety of community-based projects throughout the academic year including participating in a fundraiser, working with Special Olympics, and volunteering at various nonprofit events. In October 2016, the Men's and Women's Volleyball teams participated in a volleyball tournament to benefit Dig Pink. The Dig Pink® Rally is the Side-Out Foundation's October event that brings together volleyball players across the nation to raise funds for breast cancer research, demonstrate the power of teamwork, and show support for people with the disease. Money raised through Dig Pink® supports Side-Out's cancer research and programs to develop the whole player.

Alternative Spring Break (ASB)

The Office of Academic Engagement and Community Action (AECA) ran its 13th Alternative Spring Break (ASB) program in March 2016, serving immigrant support communities in El Paso, Texas, and Boston. ASB offers site-specific experiences for Emerson students focused on a particular issue,



depending on current events and community needs, while providing students the opportunity to learn about the unique challenges facing certain populations. The program emphasizes the school's core values of moral courage; celebration of diversity of thought and people; and commitment to ethical engagement, collaboration, and meaningful interaction with local and national communities. Participants in Boston and El Paso, Texas, at the Juarez, Mexico, border focused on immigration indicating how local, national, and international policies affect immigrants in these communities.

From the beginning of the school year, participants prepared by learning about the focus of their service and the communities from which they would be learning and serving, and gaining knowledge and skills that would enhance their experience during the week. Some of the activities entailed assisting at transitional shelters, registering new U.S. citizens to vote, weeding and fertilizing at a community farm, and transcribing interviews of domestic workers and their employers for an archiving project. Students also hosted a mock job interview and resume-building workshop for recent immigrants in English Language and job training programs at a local community center.

Laura Londoño '18 Receives Newman Civic Fellows Award

The Newman Civic Fellows Award is a prestigious national honor that recognizes inspiring college student leaders who have demonstrated an investment in finding solutions for challenges facing communities throughout the country. Emerson College President Lee Pelton nominated Laura Londoño '18, who, along with 217 of her peers across the country, was selected to receive the honor. President Pelton presented the award to her at the 2016 Emerson Recognition Awards Ceremony. At Emerson, Londoño dedicates herself to the pursuit of social justice, leading and supporting her peers, and maintaining long-term commitments to the community.

She advocates across campus and beyond for immigrant rights and immigration policy reform in her roles as a volunteer and student leader in the Office of Academic Engagement and Community Action (AECA)'s Alternative Spring Break service immersion program, and as president of the student organization Emerson UNITE (Understanding National Immigration Through Education).



Community Partners

Emerson College partners with a variety of local, regional, national, and international nonprofit organizations, including:

826 Boston
Action for Boston Community Development (ABCD)
Artists for Humanity
Arts for LA
Asian American Civic Association
Assistance League of Los Angeles
Beacon Hill Civic Association
Beacon Hill Village Association
Bird Street Community Center
Black Nativity
Boston Arts Academy
Boston Asian American Film Festival
Boston Debate League
Boston Dragon Boat Festival
Boston Early Music Festival
Boston Harbor Now
Boston International Film Festival
Boston Latino International Film Festival
Boston Lyric Opera
Boston Palestine Film Festival
Boston Preservation Alliance
Boston Renaissance Charter Public School
Bridge Over Troubled Waters
Cambridge Center for Adult Education
Carnegie Foundation
Center for Change
Charles River Conservancy
Charlestown High School
Children's Clothing Exchange
Chinatown Safety Committee
Chinese Progressive Association
City Year
Cradles to Crayons
Crash Arts/World Music
Daughters of Legacy and Leadership

Downtown Boston Business Improvement District (BID)
Dudley Branch Library
Epicenter
Ethos
Exceptional Lives
Forever Ink
Friends of the Public Garden
Gift of Life
Greater Boston Chinese Golden Age Center
Greater Boston Food Bank
Hale House
HandReach
Haynes Early Education Center
John Winthrop Preschool
Jose Mateo Ballet Theater
Josiah Quincy School
Jumpstart
Little Folks Daycare
Los Angeles Unified School District
Mass Humanities
Massachusetts Immigrant and Refugee Advocacy (MIRA)
Mather Elementary School
Medeiros Center
Midtown Park Plaza Neighborhood Association
Mission Safe
Mobility Movilidad
National Institute of Health (NIH)
New England Conservatory
Newton Free Library
Next Mile Project
On With Living and Learning (OWLL)
Operation Boston Warm
Operation L.I.P.S.T.I.C.K.
Operation Smile
Pajama Program
Project Place
RAW Artworks
ReelAbilities Film Festival
Rosie's Place
Russell Elementary School

Safe Haven
St. Anthony Shrine and Ministry Center
St. John's Catholic School
St. Mary's Center for Women and Children
Science Club for Girls (SCfG)
Side-Out Foundation
Step Up International
UMass Boston Film Series
Urban College of Boston
U.S. Marine Corps Toys for Tots Program
Wang YMCA
WGBH
Wicked Queer: The Boston LGBT Film Festival
Wikimedia Foundation
Women's Center at St. Francis House
World Wildlife Fund (WWF)
Youth LEAD (Leaders Engaging Across Differences)

Office of Government and Community Relations

Emerson College's Office of Government and Community Relations acts as a liaison between the College and the Boston community. Working closely with the College's surrounding neighborhoods, city agencies, and other area institutions, the office is committed to partnering with neighborhood associations to improve the safety and quality of life for all residents and visitors who frequent the Midtown Cultural District. Individuals or groups who would like to work with Emerson students, faculty, or staff are guided along the most effective route by this office.

Margaret A. Ings
Associate Vice President
617-824-8299

Mary Higgins
Director
617-824-8984

Office of Government
and Community Relations
Emerson College
120 Boylston Street
Boston, MA 02116-4264



Emerson
COLLEGE

Office of Government
and Community Relations
120 Boylston Street
Boston, MA 02116-4264