



HARVARD

Planning & Project Management

Harvard University Science and Engineering Complex

Harvard Allston Task Force

September 15, 2015



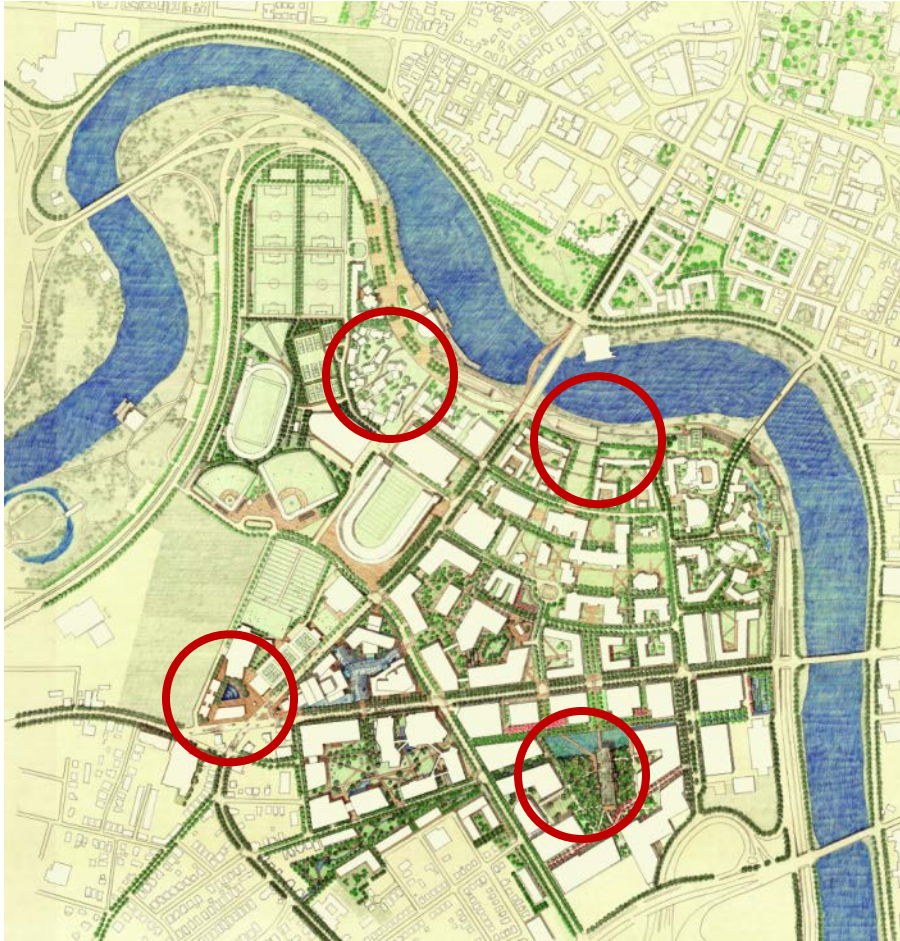
Previously Approved Project: 2007 Health & Life Science Center



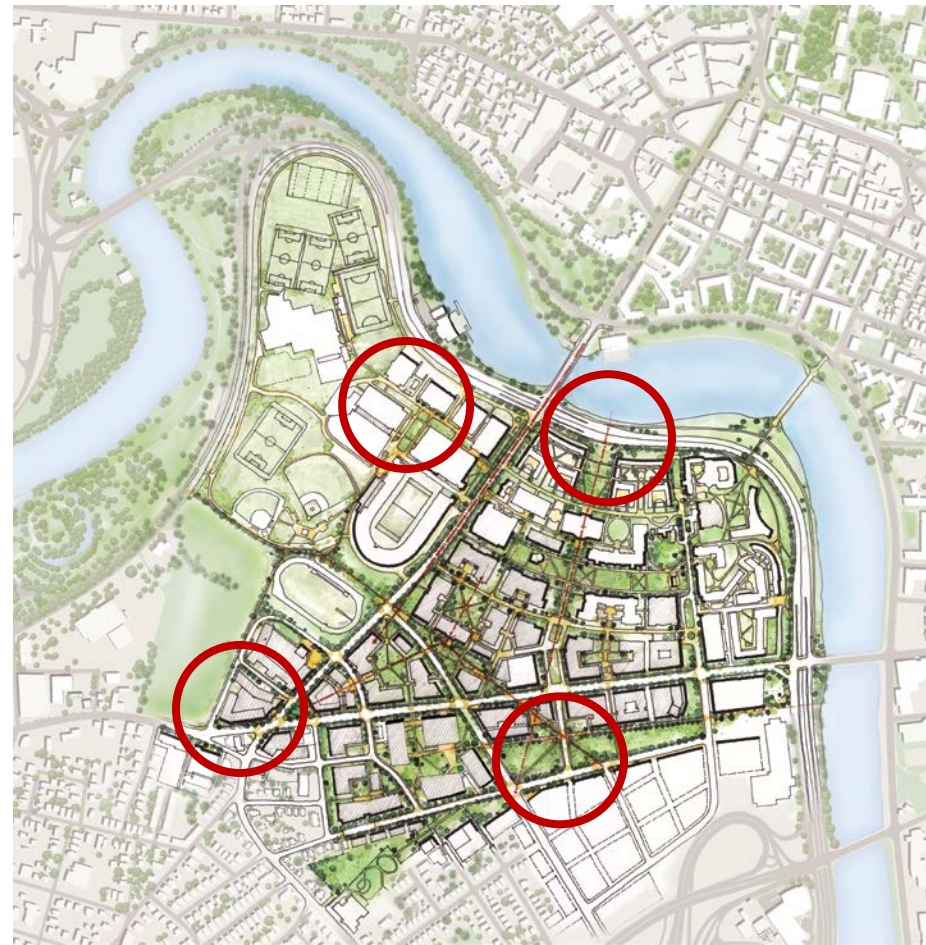
- 589,000 gross square feet
- Four buildings
- To be construction in single phase
- Foundation construction completed
- Harvard Stem Cell Institute
- Large central open space
- New streets
- Height at 107 feet
- Intensive research uses
- Uses included –
 - Research space
 - Atrium
 - Retail
 - Cafeteria
 - Auditorium
 - Daycare
 - Energy facility
 - Parking

Master Plan Context

2007 IMPNF



2013 IMP

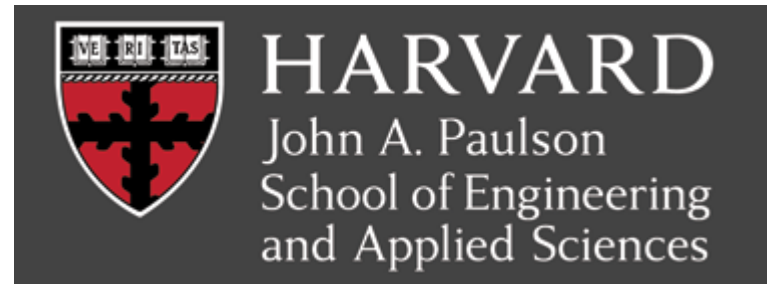


Academic Program Context

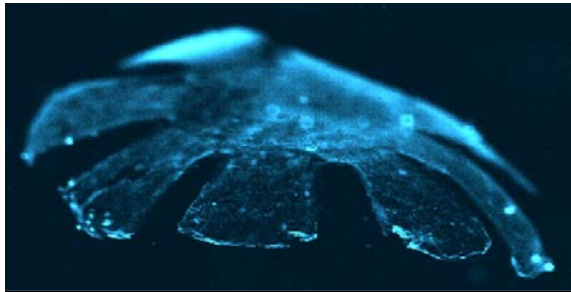
Biology and Genetics



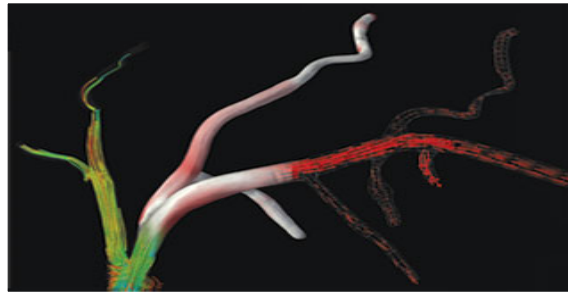
Engineering



John A. Paulson School of Engineering and Applied Sciences



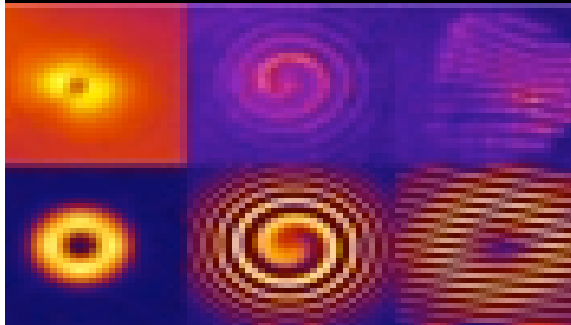
**Translational
life sciences**



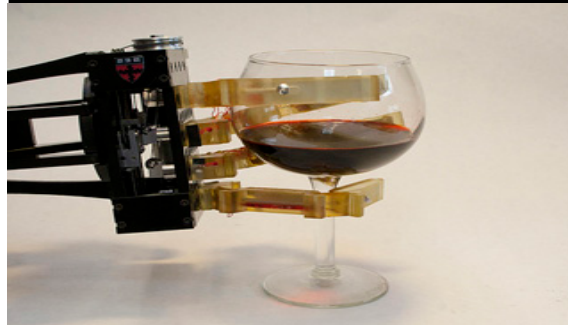
**Applied
Computation**



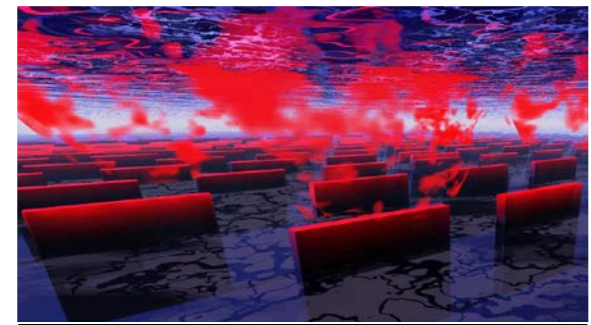
**Environmental
science**



**Nano
engineering**



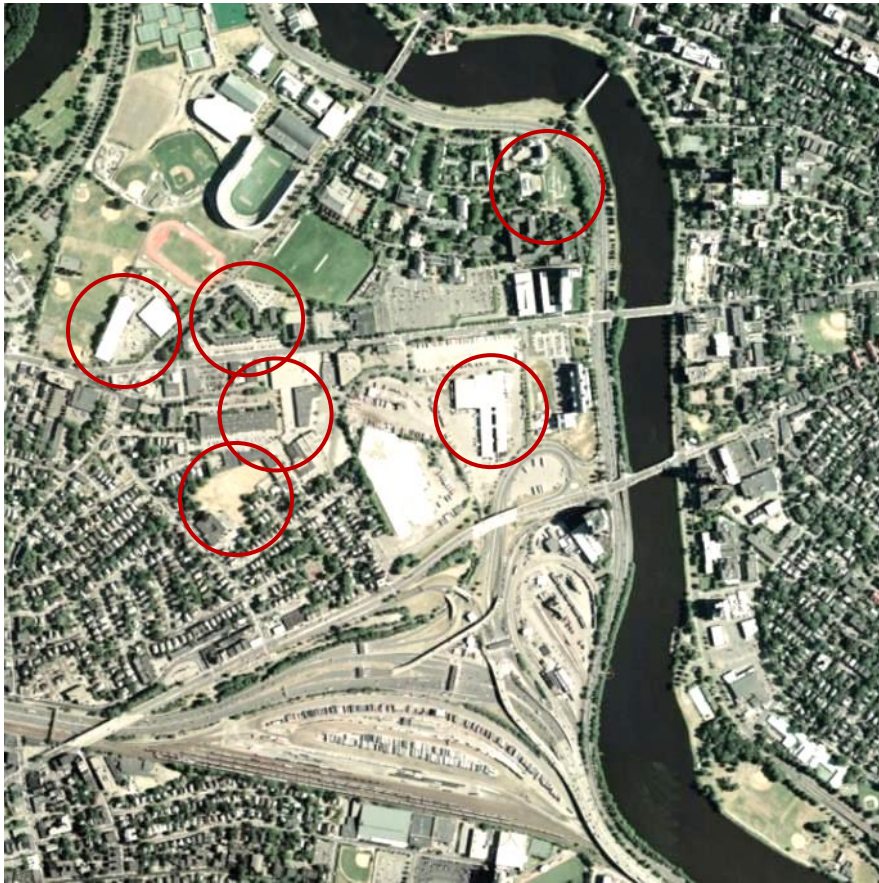
**Robotics and
Control Theory**



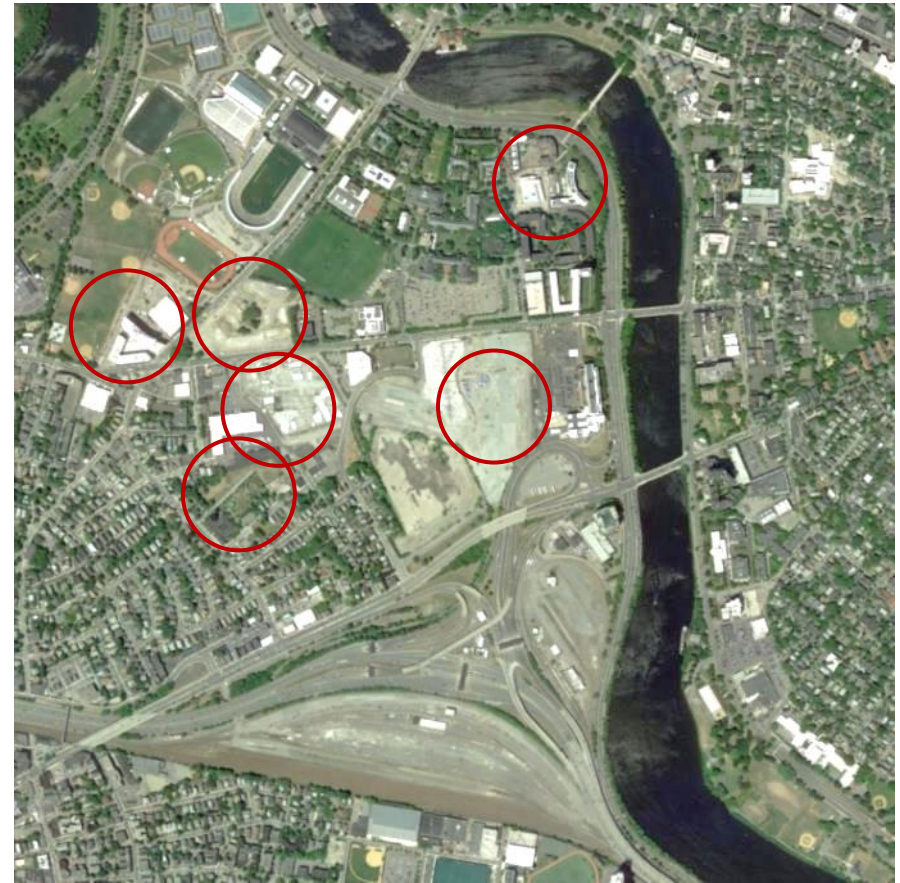
**Materials for
Energy**

Development Context

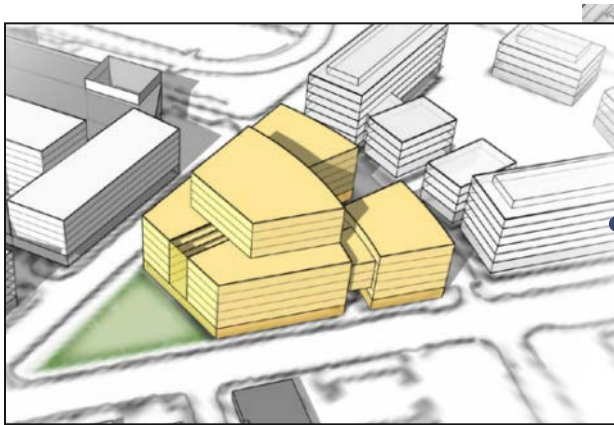
2007



2015



Barry's Corner Ten Year Plan



Gateway

Basketball/Mixed-Use

Continuum

Grove

Ceramics Studio

Education Portal

SEAS

New Streets

Rena Park



Examples of Project Area Development Since 2007

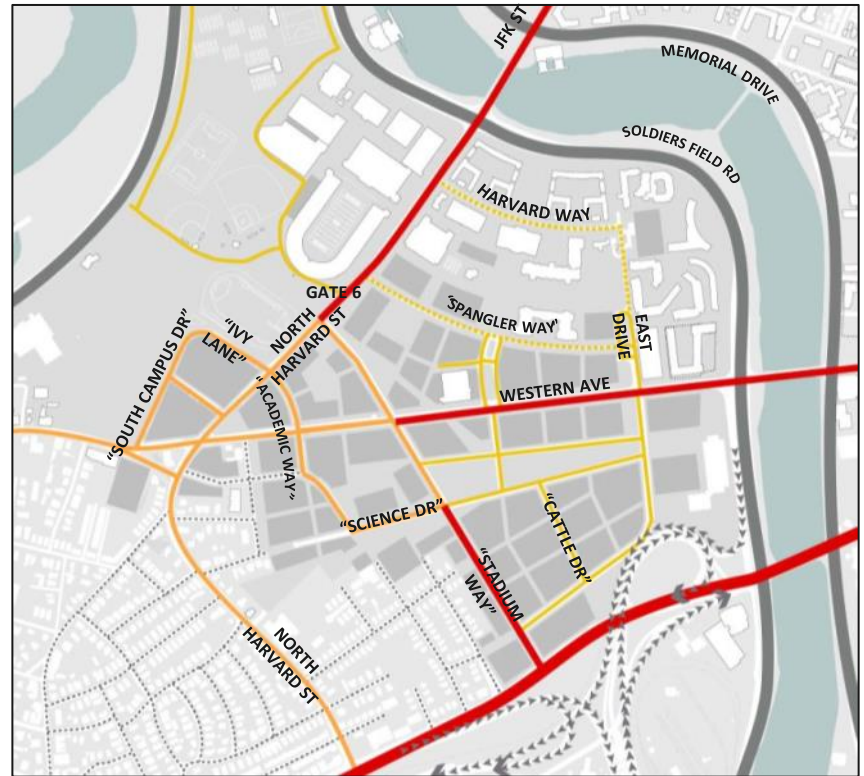


Streets and Circulation Context

2007 IMPNF



2013 IMP

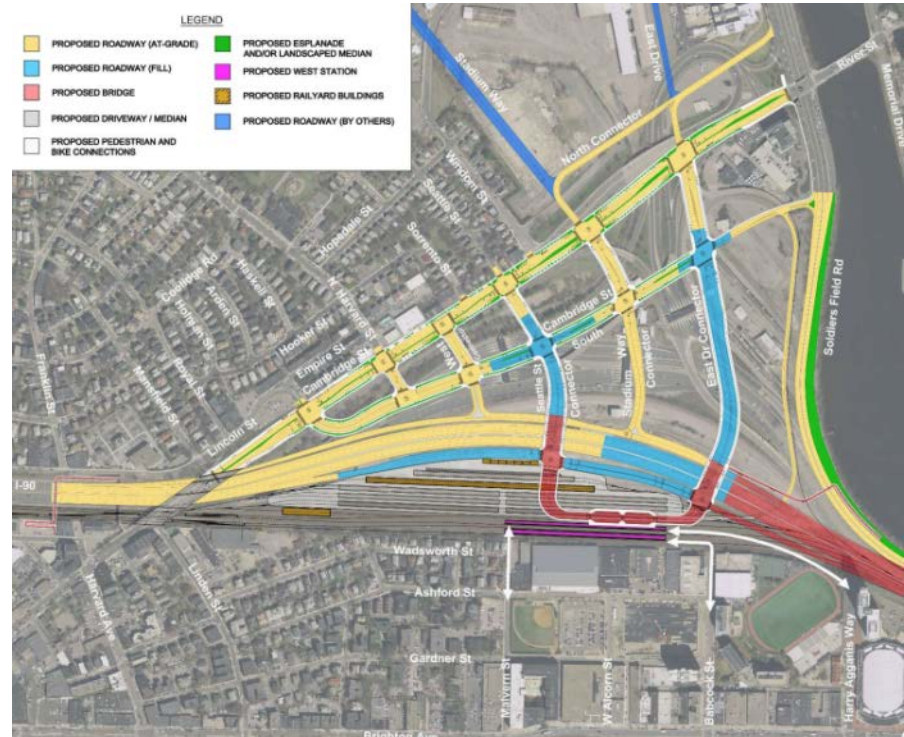


Turnpike Context

Existing Turnpike



MassDOT Proposal



2015 Science & Engineering Complex



- Single new building
- Initial project
- 586,000 gross square feet including existing 114 Western Avenue building
- Northern portion of site
- Southern portion of site preserved for future institutional development
- Primary home for the John A. Paulson School of Engineering and Applied Sciences
- No foundation construction needed
- Entire site landscaped
- Parking at surface next to / behind 114 Western Avenue
- Height comparable to 2007 project
- The project is expected to generate over 800 construction jobs.

2015 Science & Engineering Complex



Uses include –

- Teaching / classroom space
- Research space
- Atrium
- Retail and cafeteria
- Auditorium
- Energy facility

Planning and Design Principles

- 1. Leadership in Science Teaching and Research**
- 2. Institutional Master Plan Consistency**
- 3. Site and Building Permeability**
- 4. Transparency at the Street**
- 5. Vibrant Public Realm**
- 6. Landscaped Open Space**
- 7. Sustainability**
- 8. Areawide Connectivity**
- 9. Massing and Scale**
- 10. Transportation Management**

Planning and Design Principles

1. Leadership in Science Teaching and Research

2. Institutional Leadership

3. Site and Building

4. Transparency

5. Vibrant Public

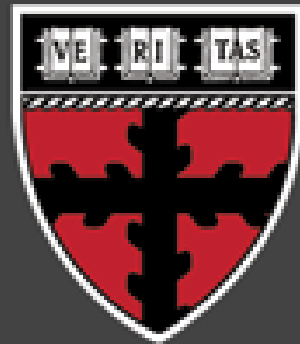
6. Landscaped Campus

7. Sustainability

8. Areawide Connectivity

9. Massing and Scale

10. Transportation Management



HARVARD

John A. Paulson
School of Engineering
and Applied Sciences

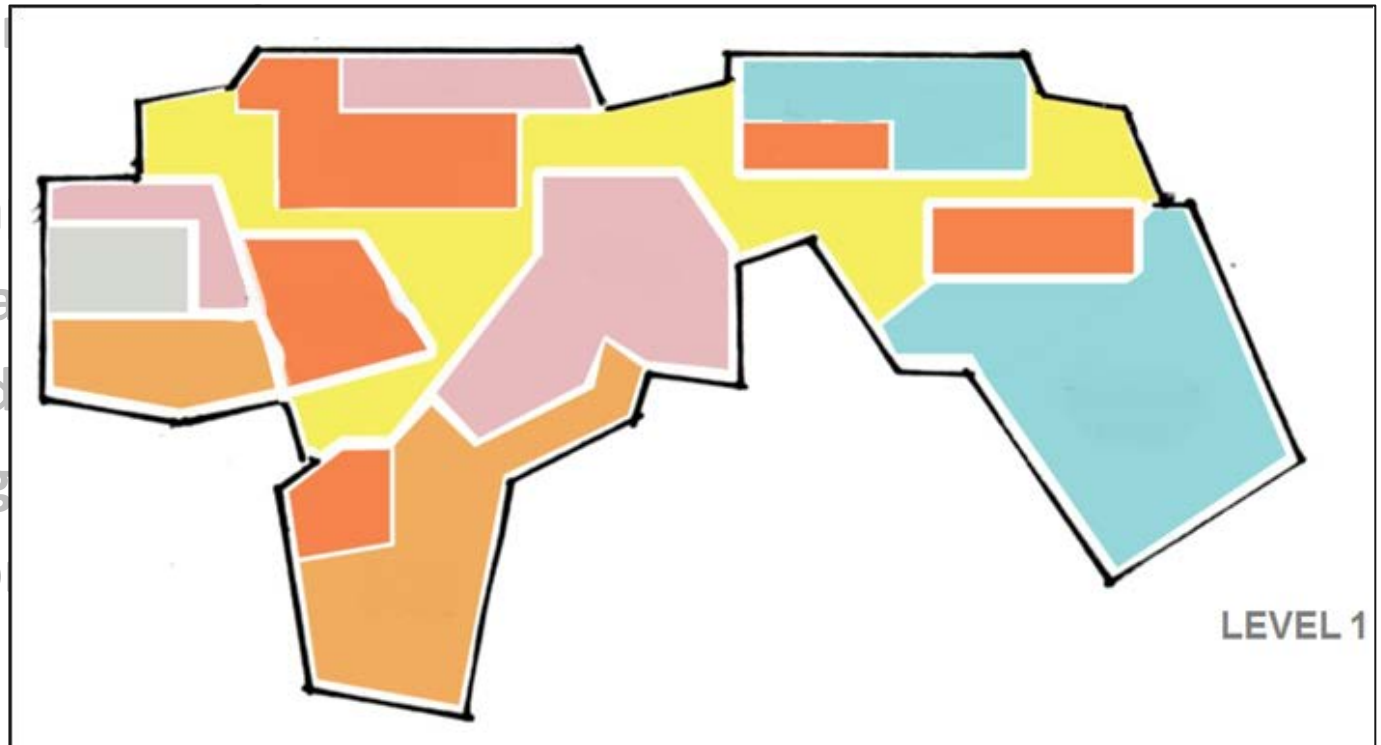
Planning and Design Principles

1. Leadership in Science Teaching and Research
- 2. Institutional Master Plan Consistency**
3. Site and Building
4. Transparency and
5. Vibrant Public
6. Landscaped Open
7. Sustainability
8. Areawide Conn
9. Massing and Sc
10. Transportation



Planning and Design Principles

1. Leadership in Science Teaching and Research
2. Institutional Master Plan Consistency
- 3. Site and Building Permeability**
4. Transparency
5. Vibrant
6. Landscapes
7. Sustainable
8. Areawide
9. Massing
10. Transportation



Planning and Design Principles

1. Leadership in Science Teaching and Research
2. Institutional Master Plan Consistency
3. Site and Building Permeability
- 4. Transparency at the Street**



Planning and Design Principles

1. Leadership in Science Teaching and Research
2. Institutional Master Plan Consistency
3. Site and Building Permeability
4. Transparency at the Street
- 5. Vibrant Public Realm**
6. Landscaped Open Space
7. Sustainability
8. Areawide Connectivity
9. Massing and Scale
10. Transportation Management



Planning and Design Principles

1. Leadership in Science Teaching and Research
2. Institutional Master Plan
3. Site and Building Permeability
4. Transparency at the Street
5. Vibrant Public Realm
- 6. Landscaped Open Space**
7. Sustainability
8. Areawide Connectivity
9. Massing and Scale
10. Transportation Management



Planning and Design Principles

1. Leadership in Science Teaching and Research
2. Institutional Master Plan Consistency
3. Site and Building Permeability
4. Transparency at the Street
5. Vibrant Public Realm
6. Landscaped Open Space
7. **Sustainability**
8. Areawide Connectivity
9. Massing and Scale
10. Transportation Management



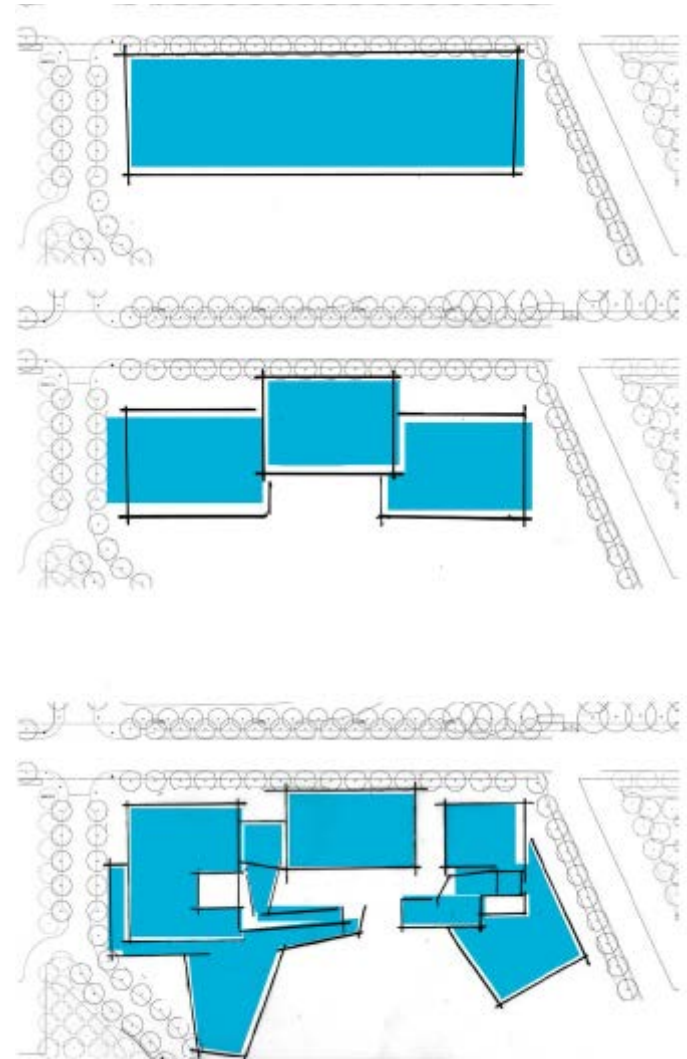
Planning and Design Principles

1. Leadership in Science Teaching and Research
2. Institutional Master Plan Consistency
3. Site and Building Permeability
4. Transparency at the Street
5. Vibrant Public Realm
6. Landscaped Open Space
7. Sustainability
- 8. Areawide Connectivity**
9. Massing and Scale
10. Transportation Management



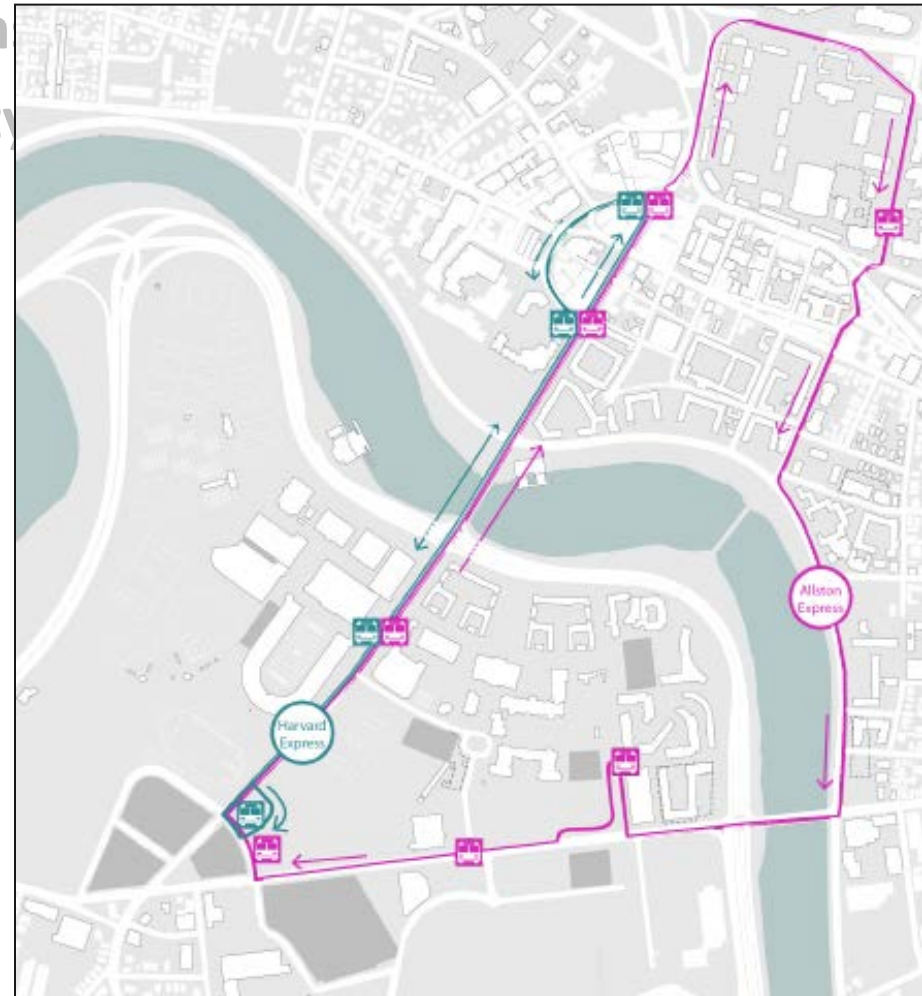
Planning and Design Principles

1. Leadership in Science Teaching and Research
2. Institutional Master Plan Consistency
3. Site and Building Permeability
4. Transparency at the Street
5. Vibrant Public Realm
6. Landscaped Open Space
7. Sustainability
8. Areawide Connectivity
- 9. Massing and Scale**
10. Transportation Management



Planning and Design Principles

1. Leadership in Science Teaching and Research
2. Institutional Master Plan Con
3. Site and Building Permeability
4. Transparency at the Street
5. Vibrant Public Realm
6. Landscaped Open Space
7. Sustainability
8. Areawide Connectivity
9. Massing and Scale
- 10. Transportation Management**



Public Review Process

Health and Life Science Center approved by City of Boston in 2007

Science and Engineering Complex largely consistent with approved project

As required, and in order to ensure community and City review, Harvard will submit –

- Institutional Master Plan Notification Form (IMPNF) and Project-Level document to start the process of amending the previous IMP and Large Project review approvals
- IMP Amendment and Supplemental Information as required by the BRA

Any future additional site development will be subject to IMP and Large Project Review regulations

Anticipated Content of Regulatory Documents

Project Overview

- Status of Institutional Master Plan
- Description of Proposed Project
- Previously Approved Project
- Program Need
- Existing Project Site
- Building Program
- Project Graphics
- Project Dimensions
- Project Landscaping
- Project Schedule
- Relationship to Existing Zoning
- Community Benefits

Anticipated Content of Regulatory Documents

Impact Analysis

- Transportation and Access
- Wind
- Shadow
- Daylight
- Solar Glare
- Air Quality
- Flood Hazards
- Groundwater / Geotechnical
- Solid and Hazardous Waste
- Noise Impacts
- Construction Logistics
- Rodent Control
- Wildlife Habitat
- Project Sustainability
- Urban Design
- Open Space
- Public Realm
- Historic Resources
- Infrastructure

Anticipated Project Schedule

SCIENCE AND ENGINEERING COMPLEX						2016								
Action/Review	Aug	Sep	Oct	Nov	Dec	Jan	Feb	Mar	Apr	May	Jun	Jul	Aug	Sep
BRA Staff and City Agencies	—————													
Permitting			—————											
Task Force Meetings		★ ★ ★ ★	★	★	★									
BRA Board Approval									★					
Demo/Foundation Permit									—	—	—	—		
Building Permit													—	—

- Permitting documents submitted Fall 2015
- Construction of ancillary (enabling) roads to begin in Fall 2015.
- BRA Board approval Spring 2016
- Construction of steel framework to begin Summer 2016.