

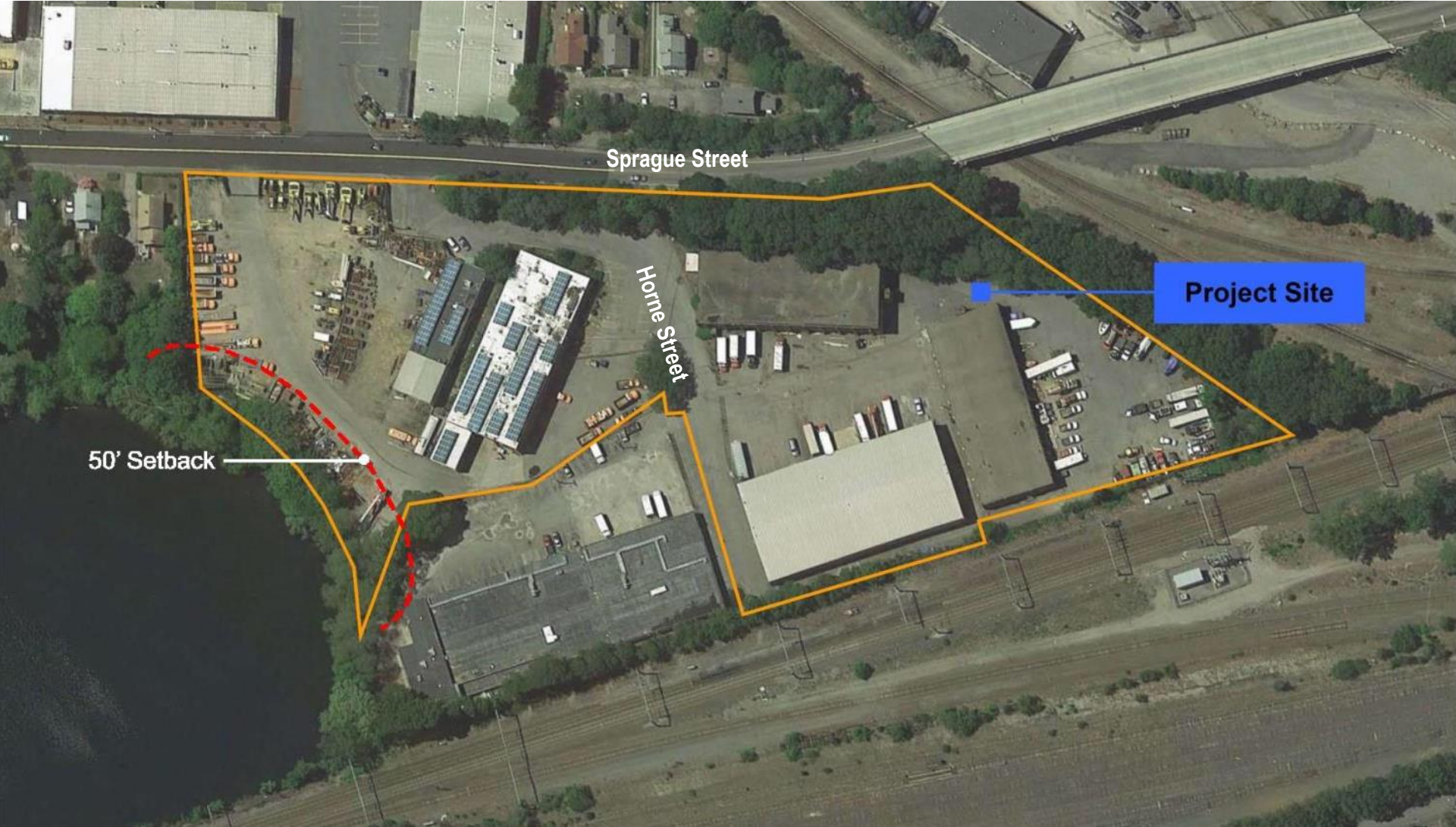


Sprague Street Redevelopment
Boston, MA

Site location



Site Existing Conditions



Sprague Street

Home Street

Project Site

50' Setback

Site Topography and its impact

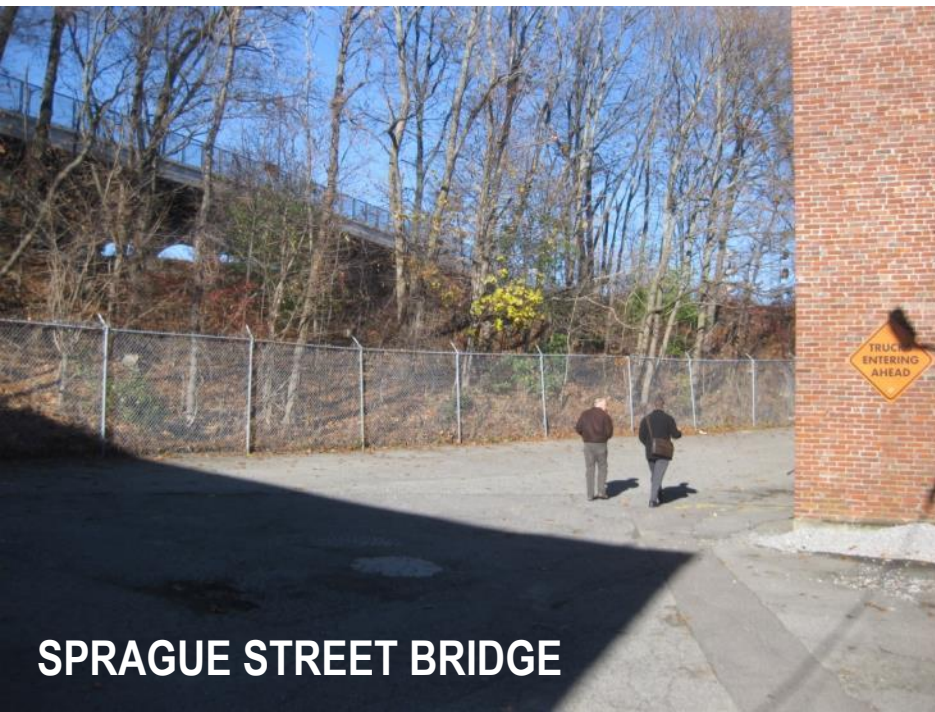




HORNE STREET



SITE TOPOGRAPHY



SPRAGUE STREET BRIDGE



SIDEWALK EDGE

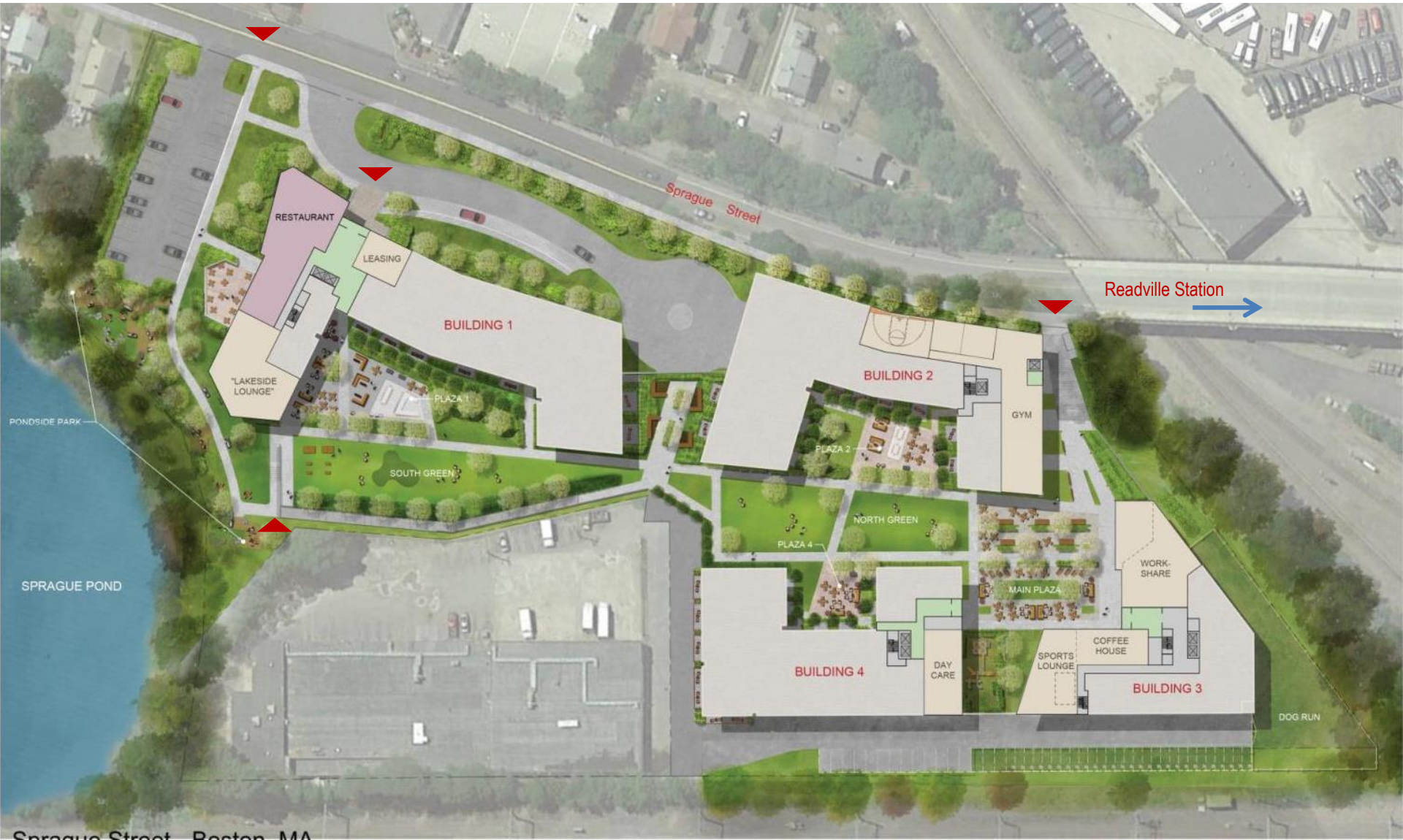
North & East Views from Site



South & West Views



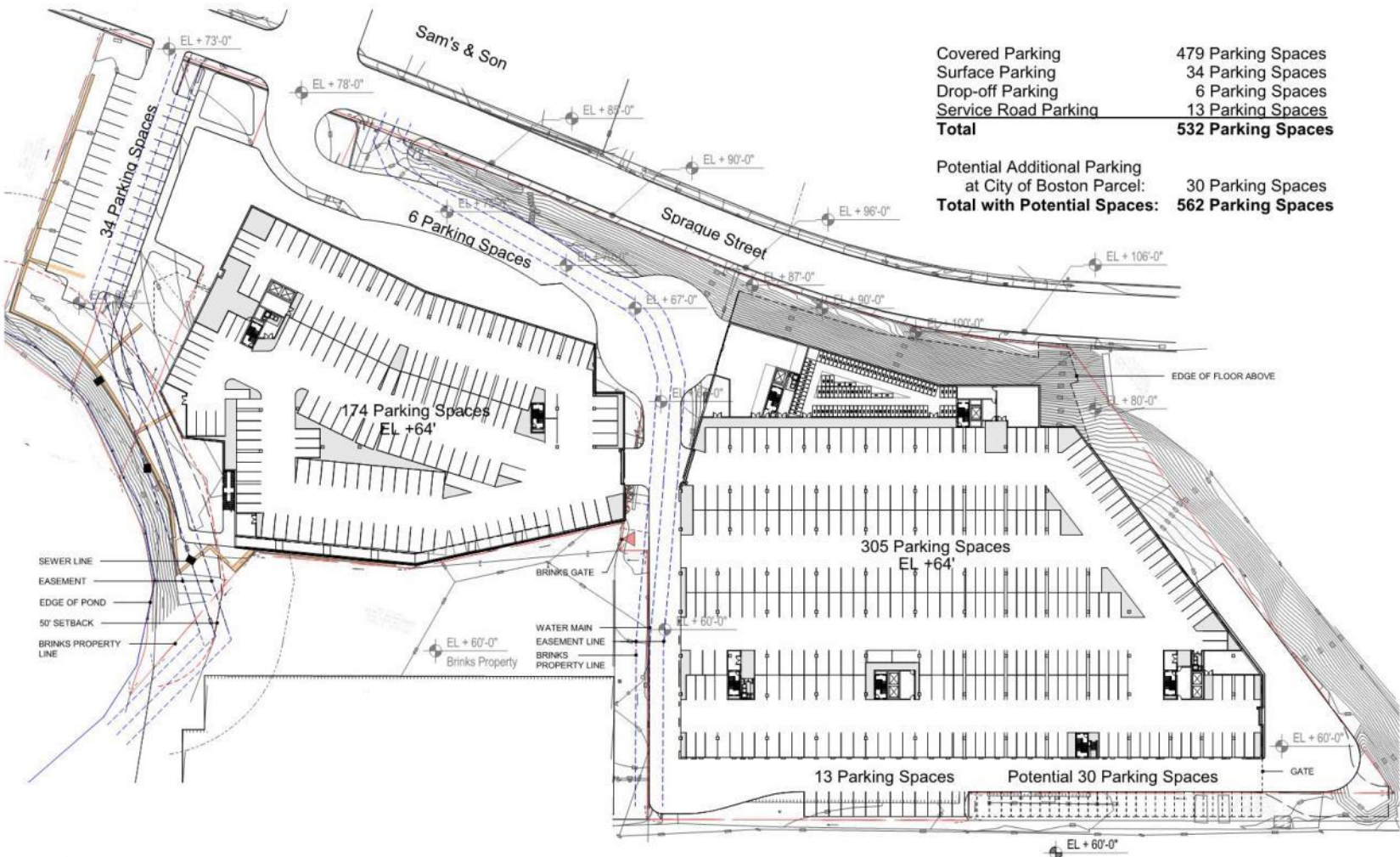
Site Plan: street and courtyard level



Sprague Street Boston, MA

Site Plan

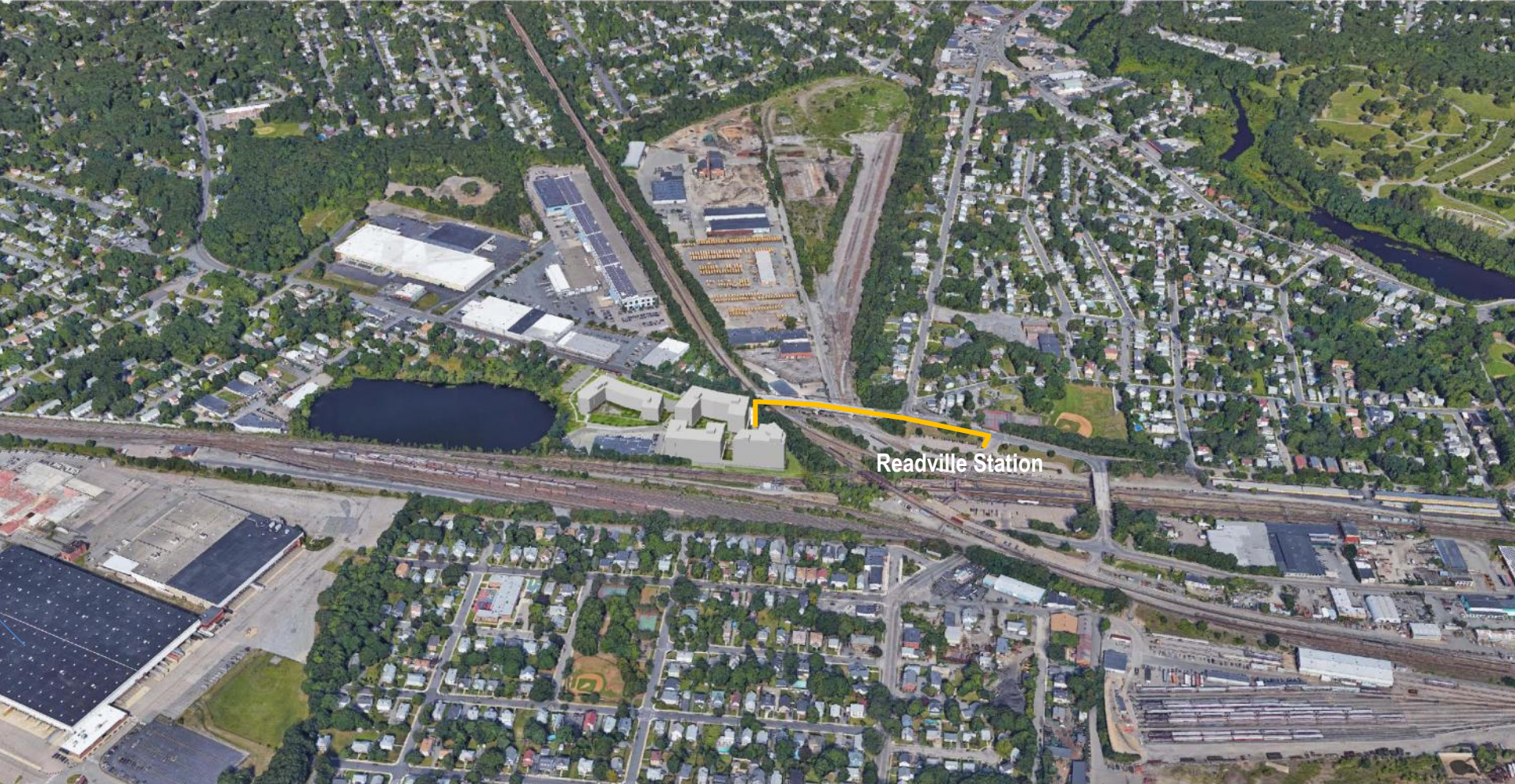
Parking Plan at Grade Site Plan one level below courtyard



Covered Parking	479 Parking Spaces
Surface Parking	34 Parking Spaces
Drop-off Parking	6 Parking Spaces
Service Road Parking	13 Parking Spaces
Total	532 Parking Spaces

Potential Additional Parking at City of Boston Parcel:	30 Parking Spaces
Total with Potential Spaces:	562 Parking Spaces

Pedestrian Path to Train



Alternatives Considered



Birds Eye view from East



Central Plaza & Amenity Spaces



Central Plaza Connection to
Sprague Street



Sprague Street Entry

Accessible Connection to Sprague Street



View "up" Sprague Street, looking north



Façade "Evolution" or Transition



Section @ Sprague Street



Birds Eye view from East: Sprague Pond Treatment



Sprague Pond Edge Treatment





Sprague Street Boston, MA

Site Photos Key Plan

March 1, 2017

Bargmann Hendrie + Archetype 300 A Street Boston, MA 02210 Tel: (617) 350-0450

P:\3279 Sprague Street Housing\graphic\Meetings and Presentations\2017.03.01 Community Meeting

Context: Sprague Street

BEFORE



AFTER



**Building not visible*

BEFORE



AFTER



**Building not visible*



Sprague Street Boston, MA

Site Photos Key Plan

March 1, 2017

Bargmann Hendrie + Archetype 300 A Street Boston, MA 02210 Tel: (617) 350-0450

P:\3279 Sprague Street Housing\graphic\Meetings and Presentations\2017.03.01 Community Meeting

Context: Sprague Street Bridge

BEFORE



AFTER



BEFORE



AFTER





Sprague Street Boston, MA

Site Photos Key Plan

March 1, 2017

Bargmann Hendrie + Archetype 300 A Street Boston, MA 02210 Tel: (617) 350-0450

P:\3279 Sprague Street Housing\graphic\Meetings and Presentations\2017.03.01 Community Meeting

BEFORE



AFTER





Sprague Street Boston, MA

Site Photos Key Plan

March 1, 2017

Bargmann Hendrie + Archetype 300 A Street Boston, MA 02210 Tel: (617) 350-0450

P:\3279 Sprague Street Housing\graphic\Meetings and Presentations\2017.03.01 Community Meeting

Context: Milton Street Bridge

BEFORE



AFTER



BEFORE



AFTER





Sprague Street Boston, MA

Site Photos Key Plan

March 1, 2017

Bargmann Hendrie + Archetype 300 A Street Boston, MA 02210 Tel: (617) 350-0450

P:\3279 Sprague Street Housing\graphic\Meetings and Presentations\2017.03.01 Community Meeting

BEFORE



AFTER



8. View from Prescott Street
between Neponset
Valley Parkway & Stanbro
Street

BEFORE



AFTER



9. View from Prescott Street
at Stanbro Street

**Building not visible*



Sprague Street Boston, MA

Site Photos Key Plan

March 1, 2017

Bargmann Hendrie + Archetype 300 A Street Boston, MA 02210 Tel: (617) 350-0450

P:\3279 Sprague Street Housing\graphic\Meetings and Presentations\2017.03.01 Community Meeting

BEFORE



AFTER



**Building not visible*

12. View from Camp Meigs at Clifford Street

BEFORE



AFTER



**Building not visible*

13. View from Camp Meigs at Hyde Park Avenue

Questions & Comments

