



Boston Civic Design Commission

March 7, 2017

Boston College Field House







SITE PLAN











1. Carney Hall (5 stories) – 50' from Beacon St



2. McGuinn Hall (5 stories) – 50' from Beacon St



3. Campion Hall (4 stories) – 40' from Beacon St



4. Merkert Chemistry Center (3 stories) – 36' from Beacon St



1. Merkert Chemistry Center (3 stories) – 36' from Beacon St



2. Alumni Stadium & Beacon St Parking Garage



3. Beacon St Parking Garage



4. Beacon St



Modified Arch II - Northwest View | 11



Modified Arch II - Northwest View | 12





Modified Arch II - Northeast View at Night | 14



Modified Arch II- Southeast View from Beacon St | 15



Modified Arch II- Southeast View from Beacon St | 16



Modified Arch II- Southeast View from Beacon St with Housing | 17



Southeast View from Beacon Street | 18



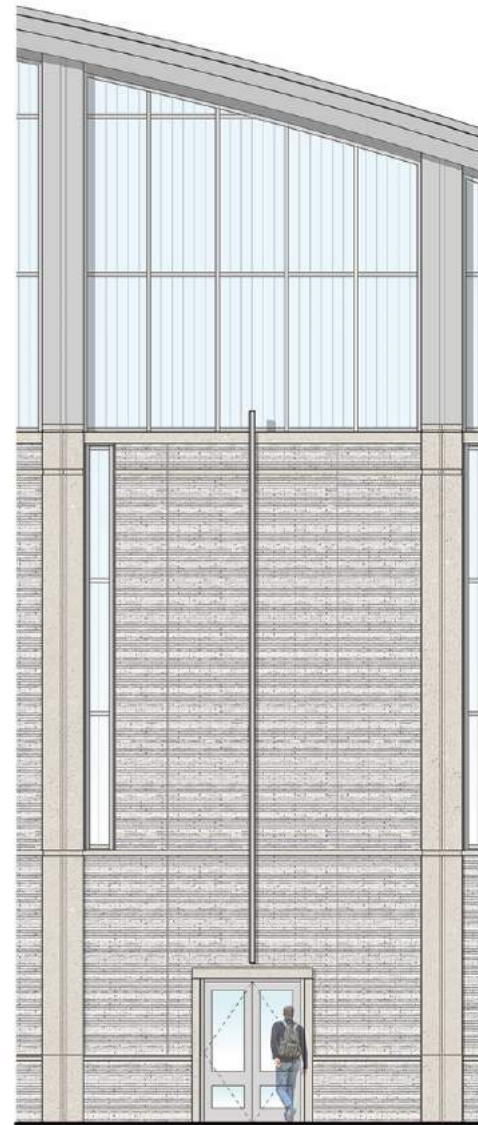
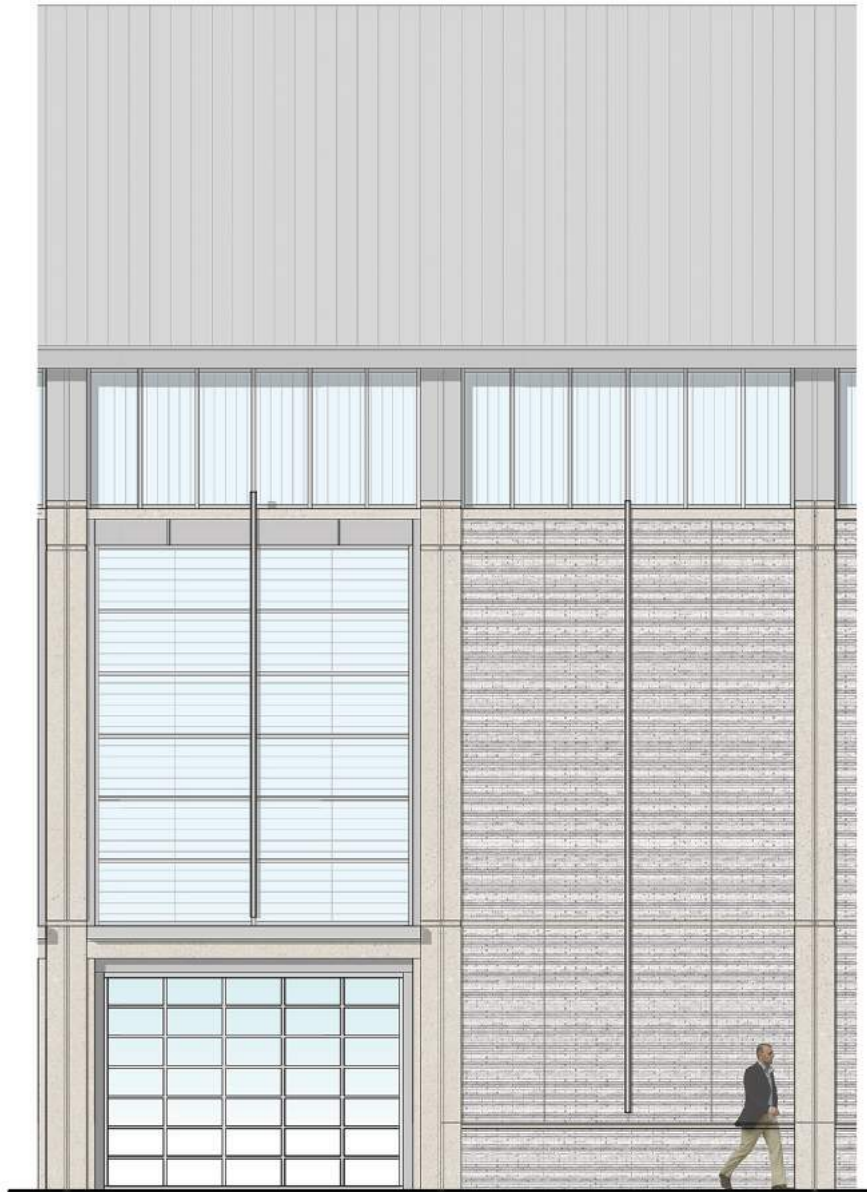
Southeast View from Beacon Street | 19



Modified Arch II - Southwest View from Beacon St | 20



Modified Arch II - Southwest View from Beacon St | 21





Modified Arch II- View down west Pedestrian Path | 23



Site Section through Beacon Street | 24







South Elevation at walkway | 27



South Elevation from Beacon Street | 28

Take Aways

BCDC Sub-Committee
February 21, 2017

- New roof form, elevations and materials approach well received
- Beacon Street elevation requires additional articulation through the use of additional windows or building signage
- Consider Beacon Street signage to recognize this edge of campus
- Continue the Beacon Street sidewalk and planting language as presented
- Transitional building for Shea Field site









Current Model View | 35





Modified Arch - Southeast View from Beacon St with Housing | 37



Modified Arch - Southeast View from Beacon St with Housing | 38

Field House Purpose and Need

- Fulfills critical need for indoor practice space for:
 - Football
 - Other Varsity Sports
 - Intramural and Club Sports
 - Recreational Activities
- Provides ability to practice in inclement weather
- All colleges in ACC have indoor practice facilities or are constructing
- Allows practice with simulated game environment without impacting classes or neighborhood
- Provides appropriately-sized Weight Room facility for the Football Team

Field House Program

Program Space	Gross Square Footage	Notes
Playing Field	86,700	Full size Football Field w/20' Runoff
Weight Room	8,950	
Athletic Support	6,850	First Aid, Hydration, Nutrition
Building Support	9,165	Toilet Rms, Mechanical
Entry/Circulation	3,560	
Offices	475	4 Training Staff; Coach Office
Total GSF	115,700	



Proposed Field House Site Plan | 41









Interior view looking northeast | 45



Interior view looking southeast | 46

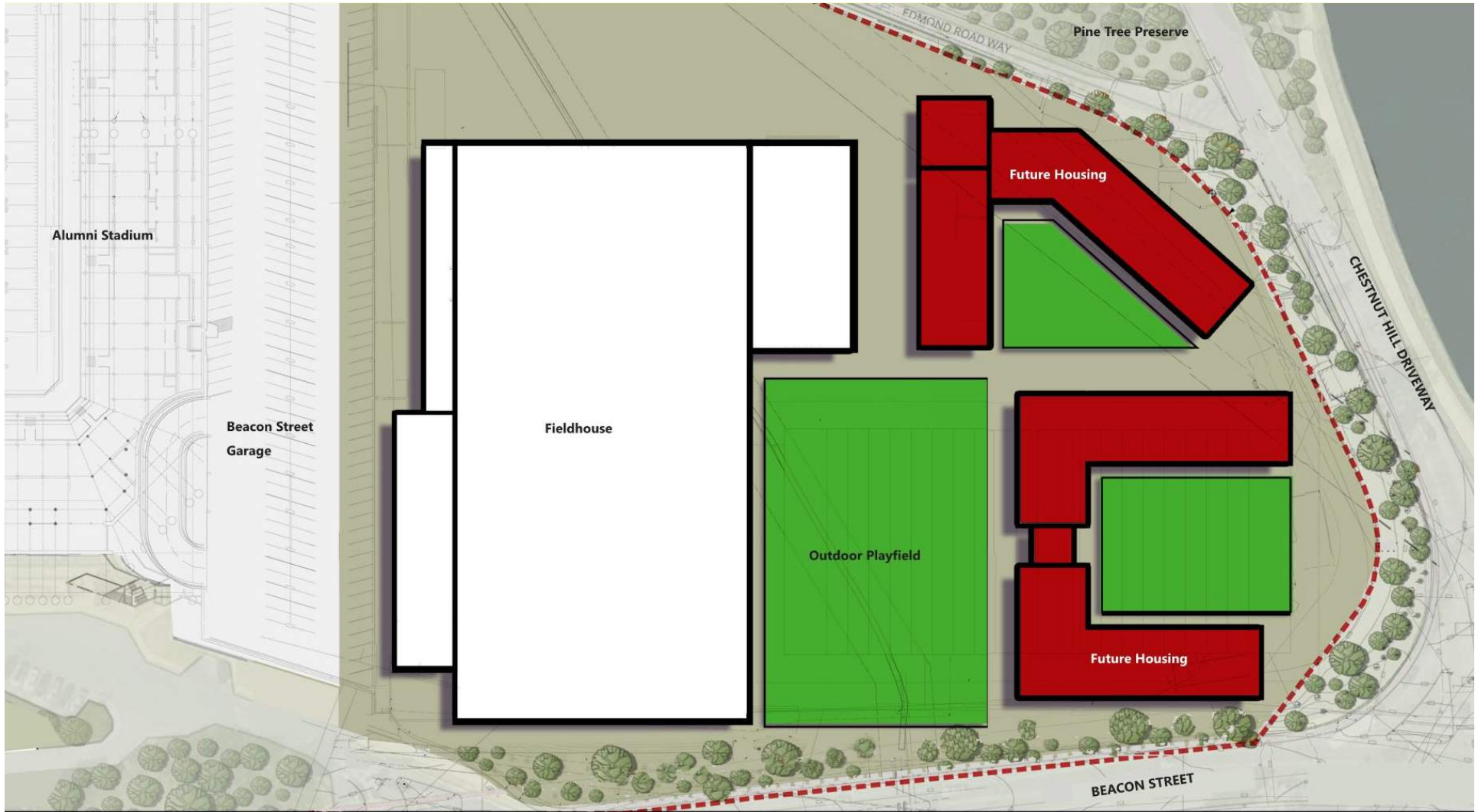




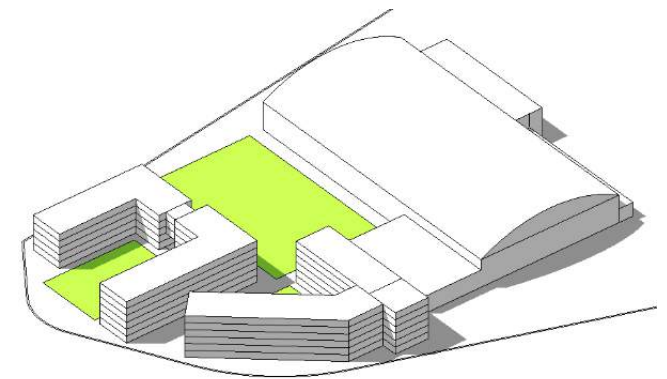
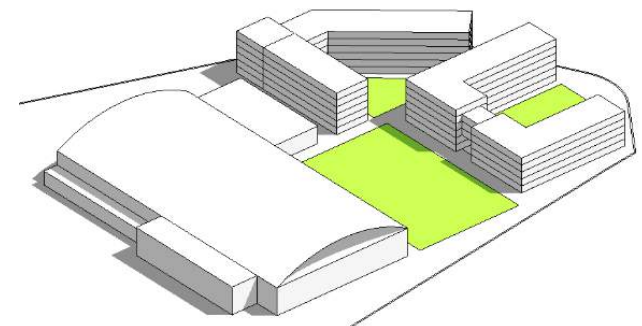
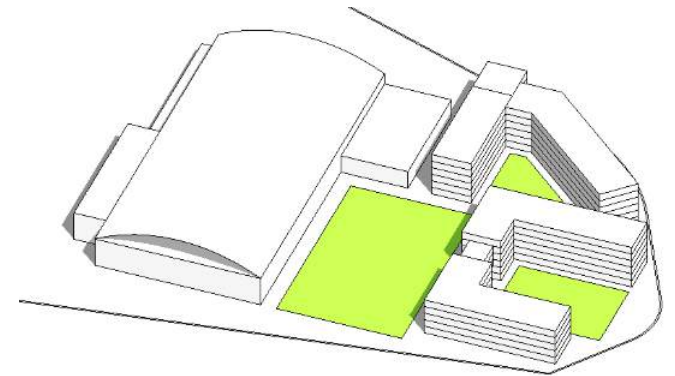
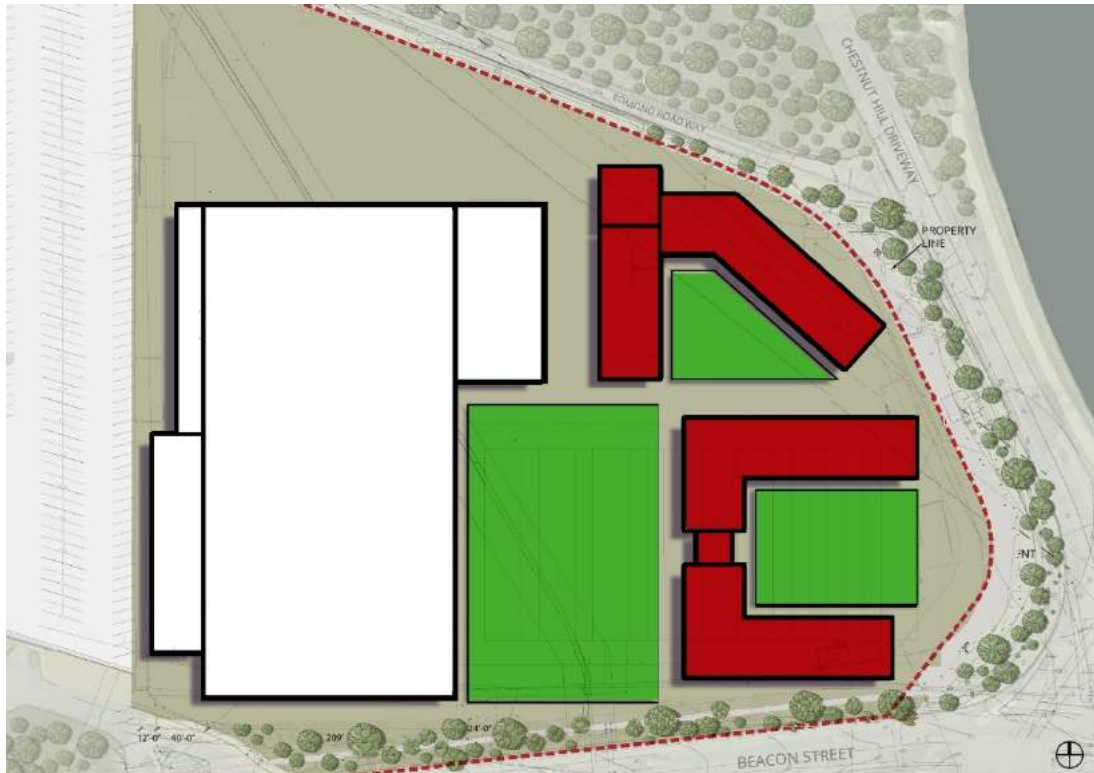
Institutional Master Plan Amendment

- Construction of Field House
- Reconfiguration of 550 beds of Shea Field housing
- Elimination of 350-space parking addition at Beacon St Garage





Proposed Site Plan with propose housing | 51

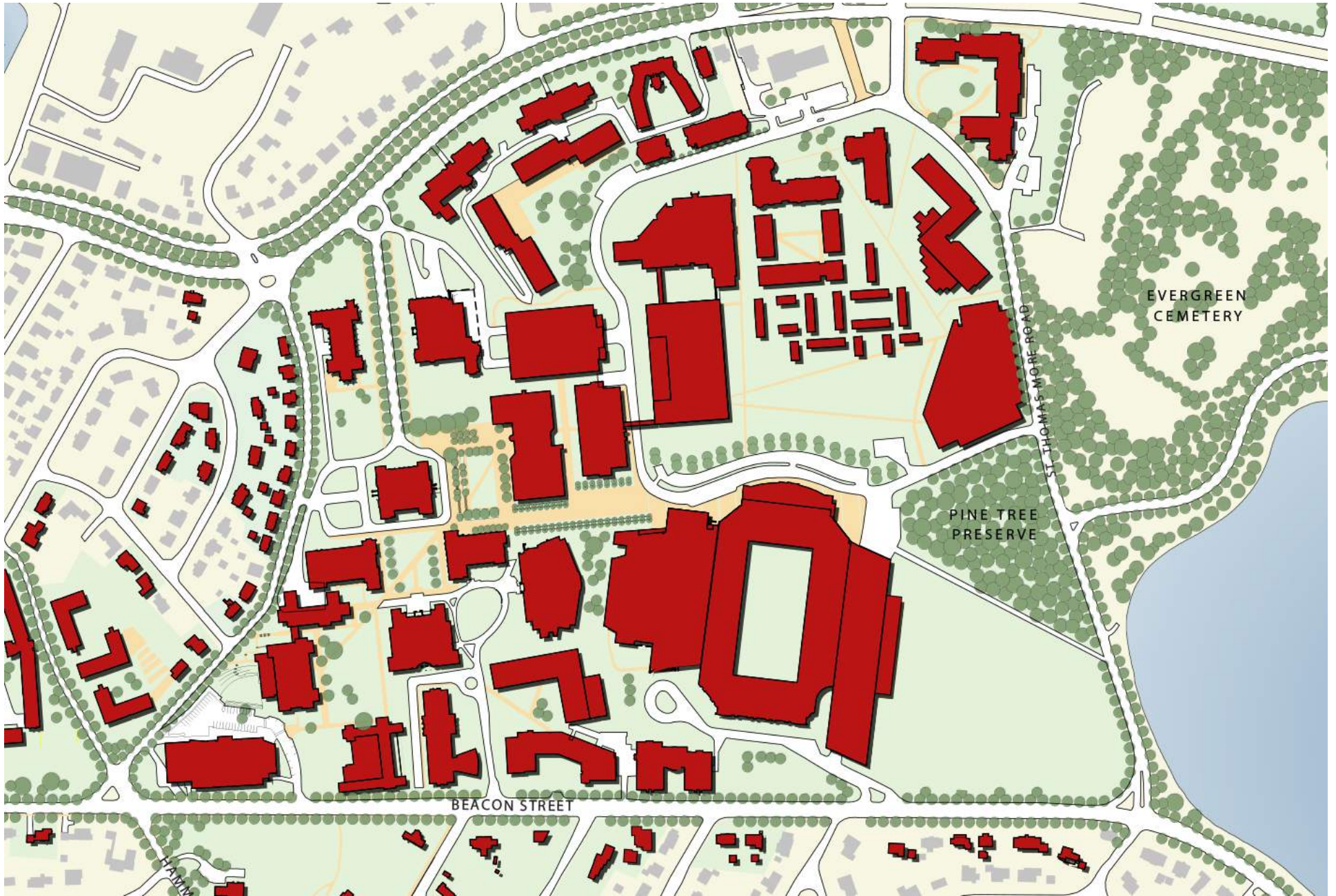




Aerial View with future housing | 53



East-West Site Section with future housing | 54



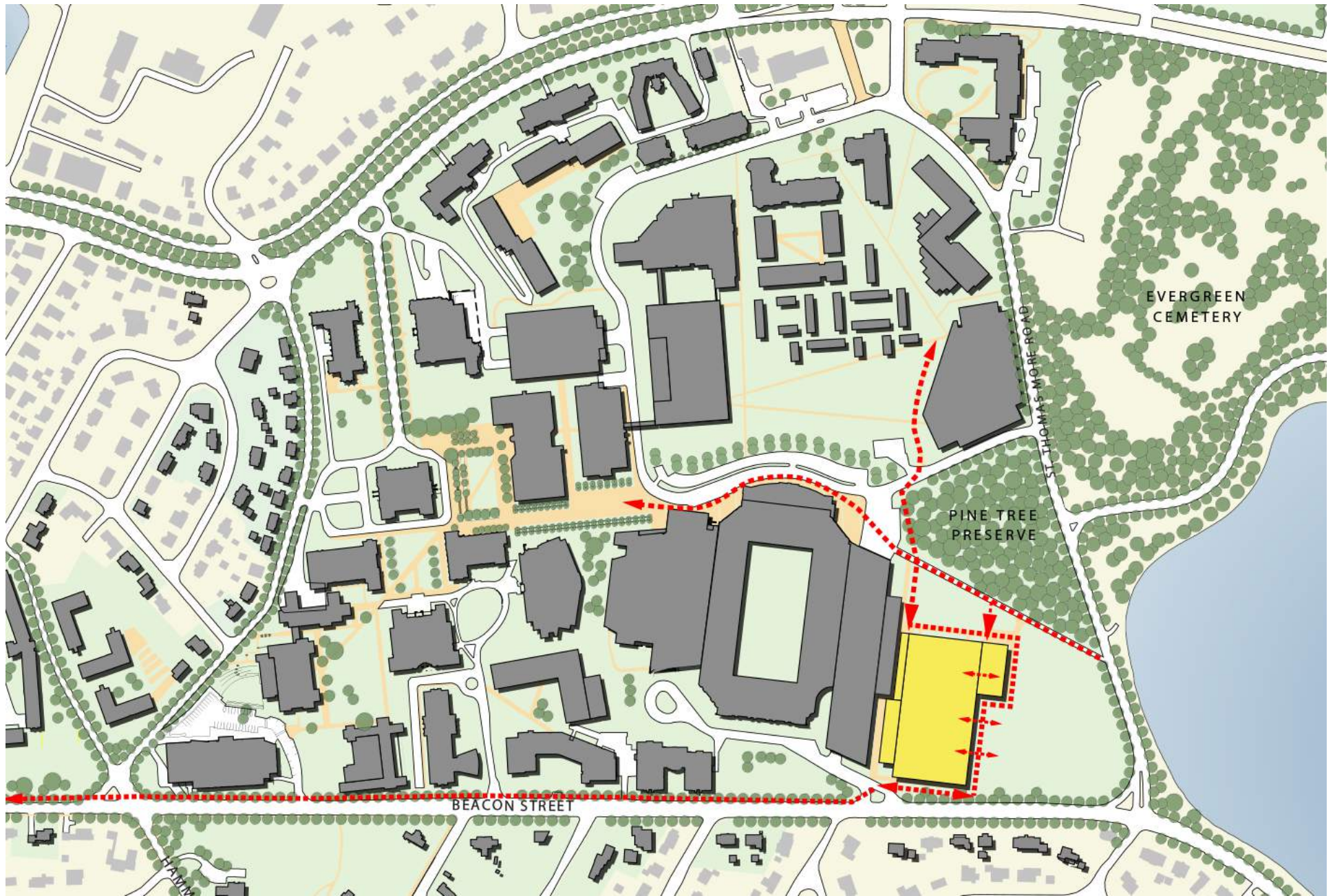


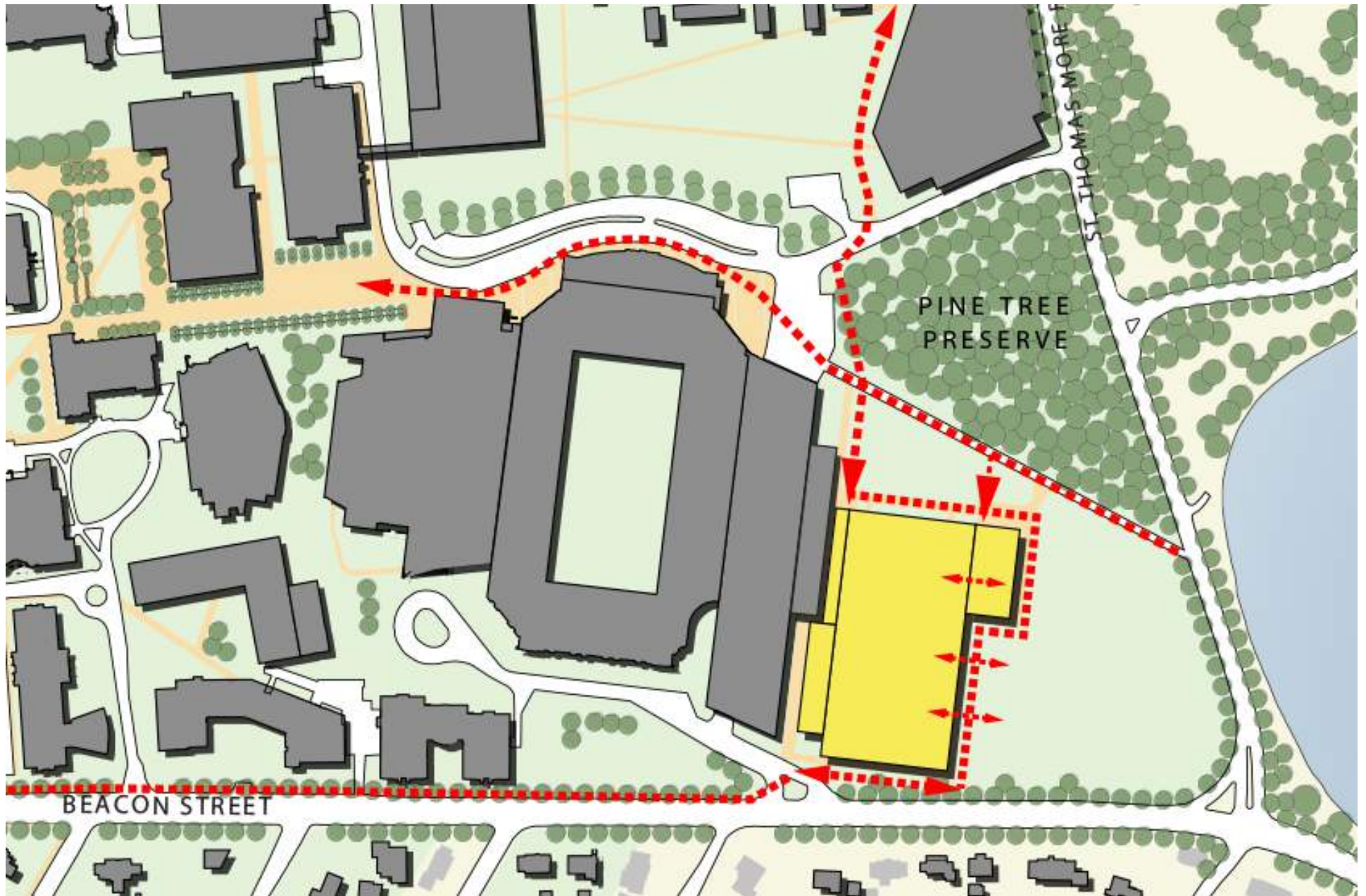










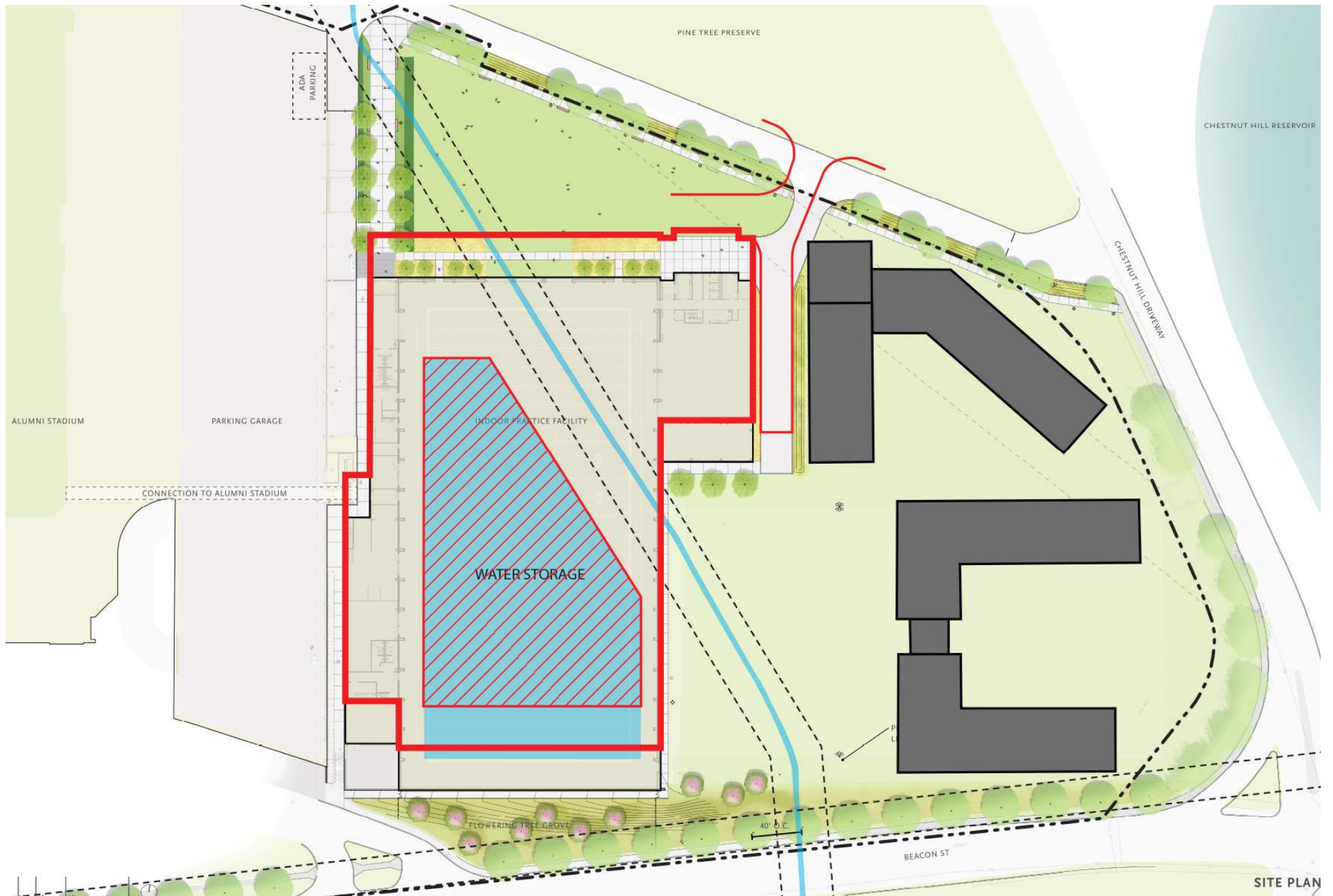




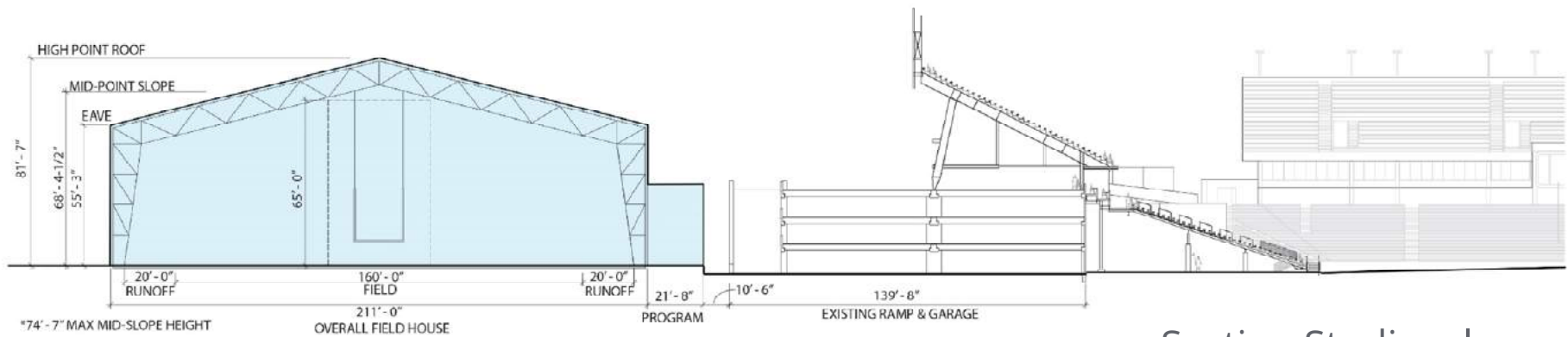
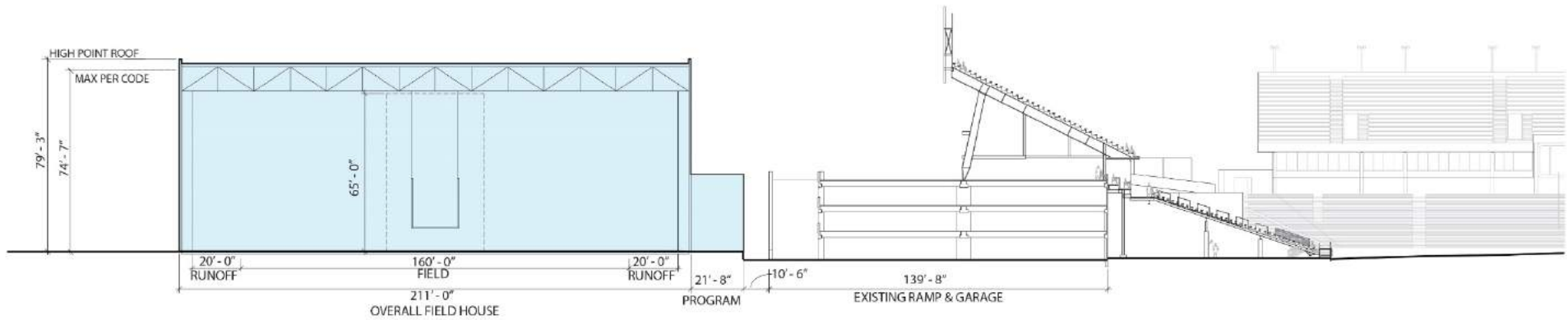
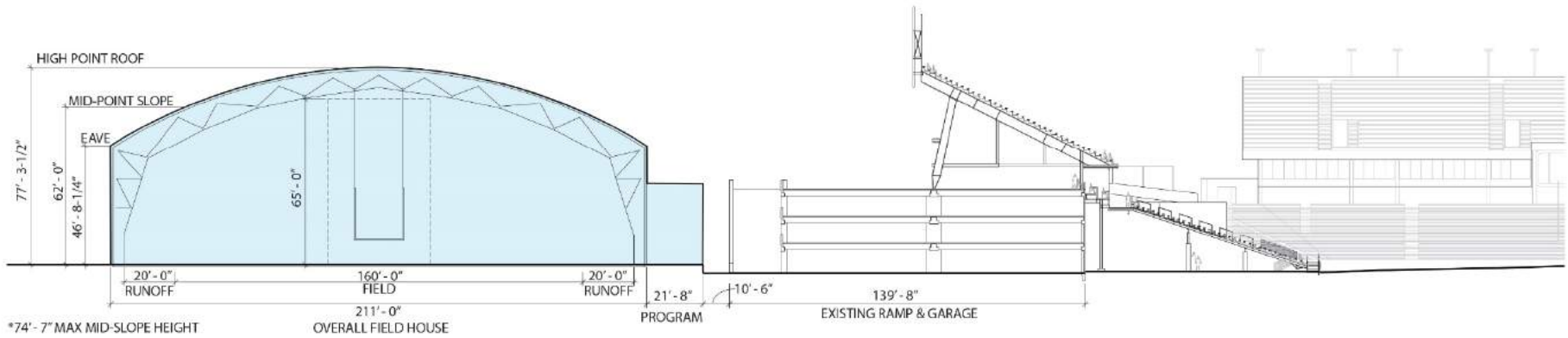
Proposed Field House Site Plan – Site Constraints | 63

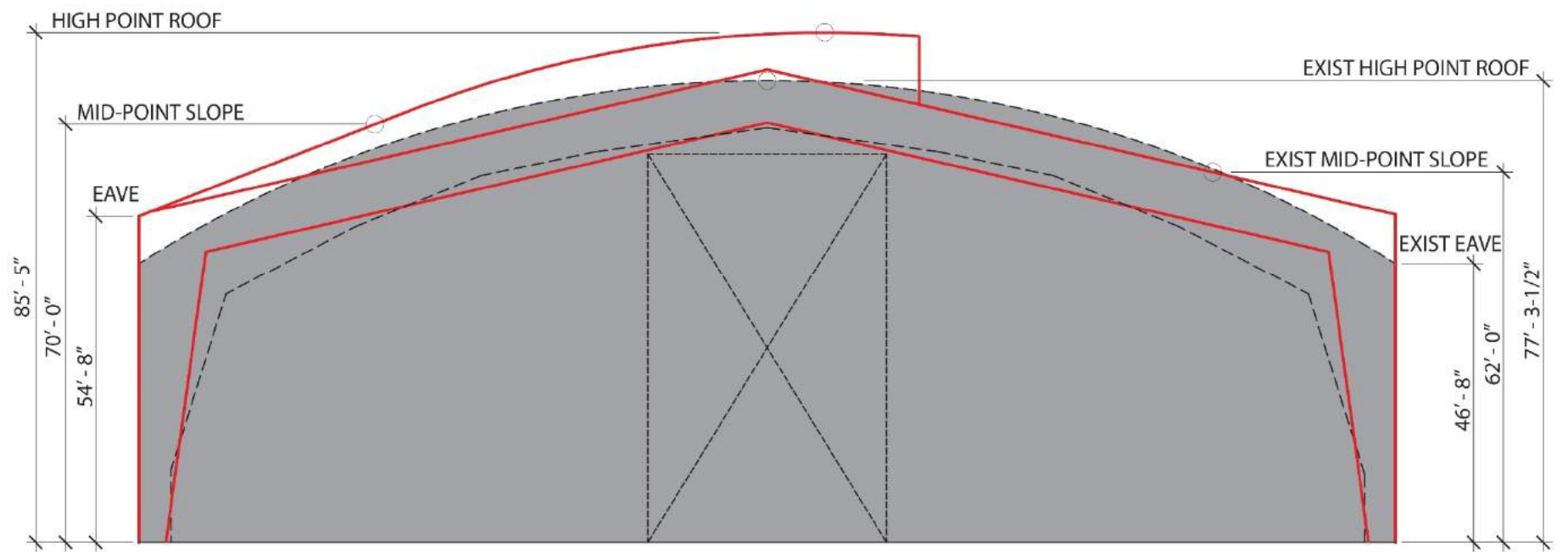


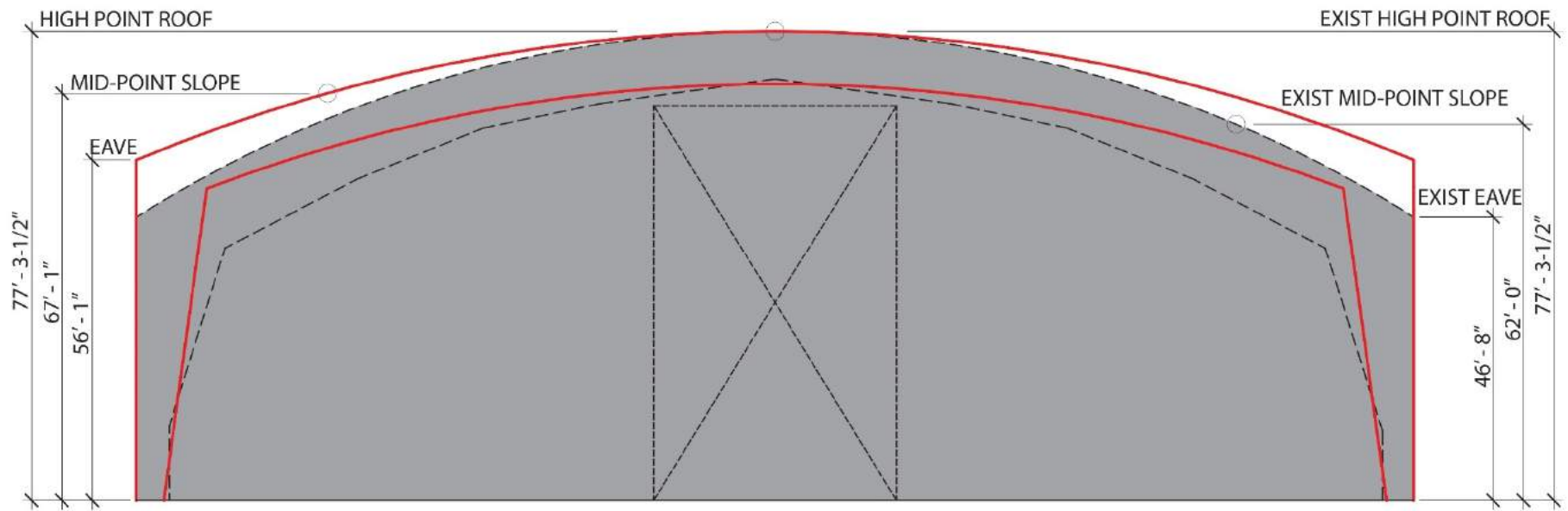
Proposed Field House Site Plan – Footprint Shift 30' | 64



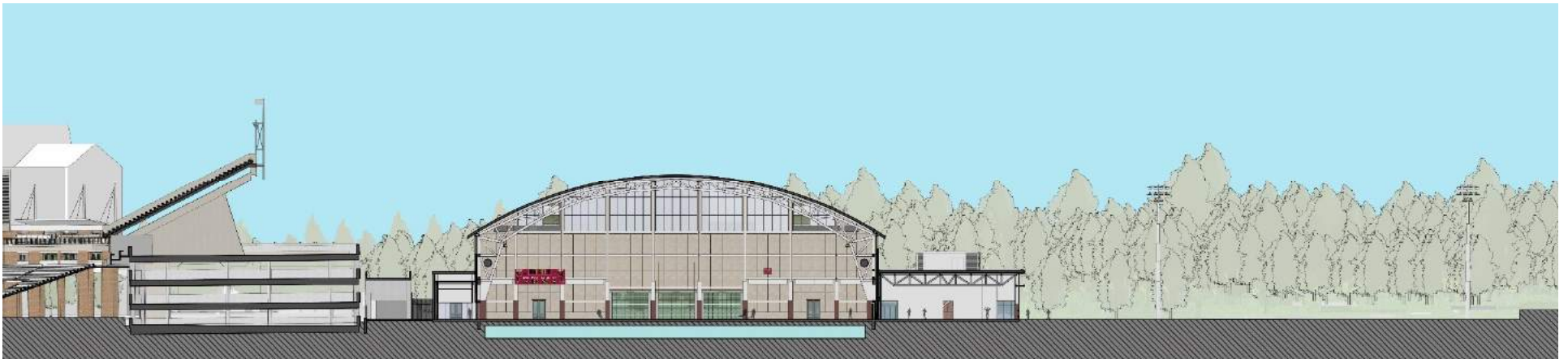
Proposed Field House Site Plan – with Housing | 65













North-South Site Section | 71



Interior view looking northeast | 72



Aerial View with future housing | 73









Clemson



NC State



Syracuse



Florida State University



UVA



Virginia Tech



Duke



Louisville



Wake Forest



UNC



Georgia Tech



University of Miami