

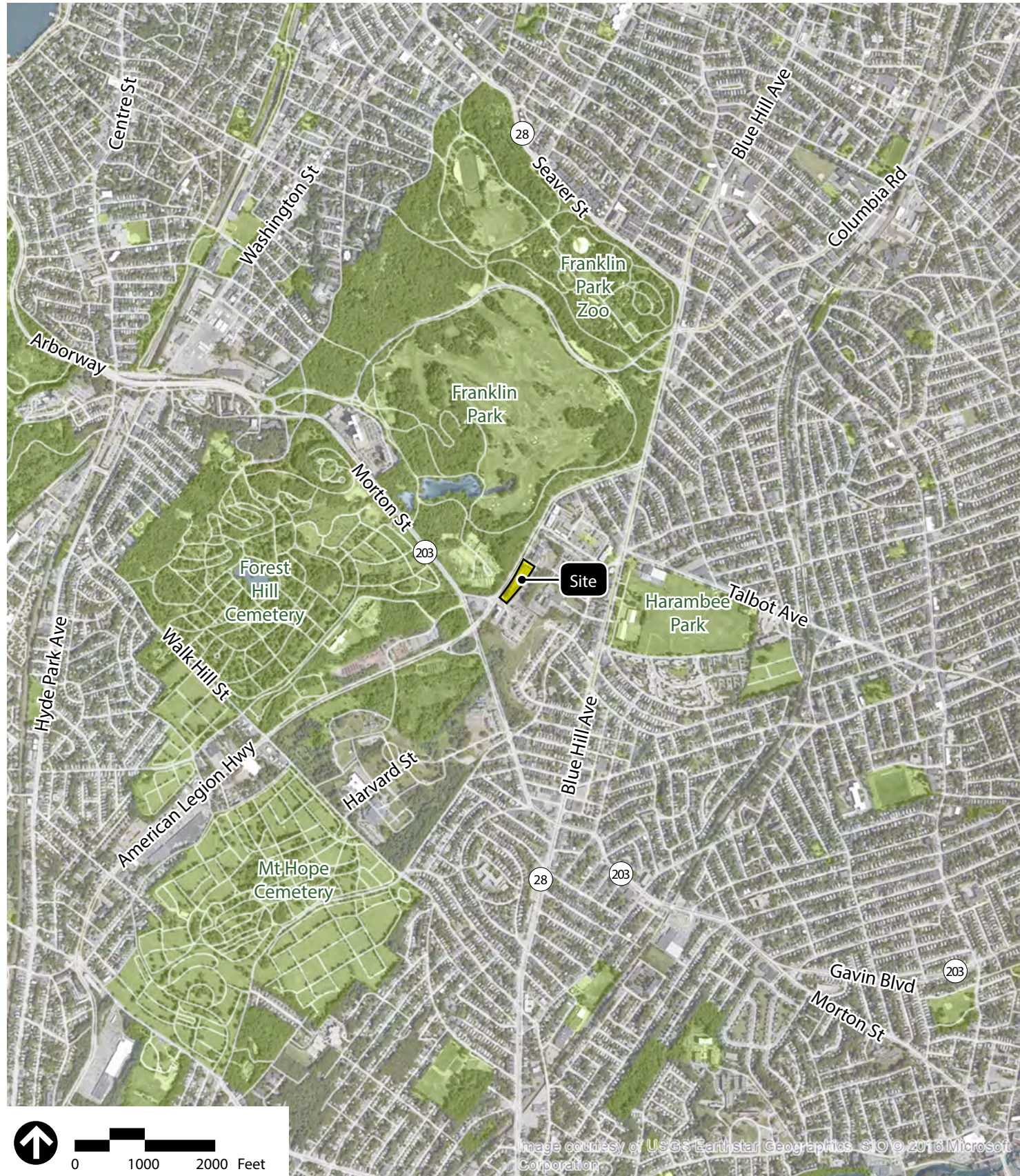


**ARROWSTREET** ARCHITECTURE & DESIGN

Brooke Charter High School  
MATTAPAN, MA

3 JANUARY 2017

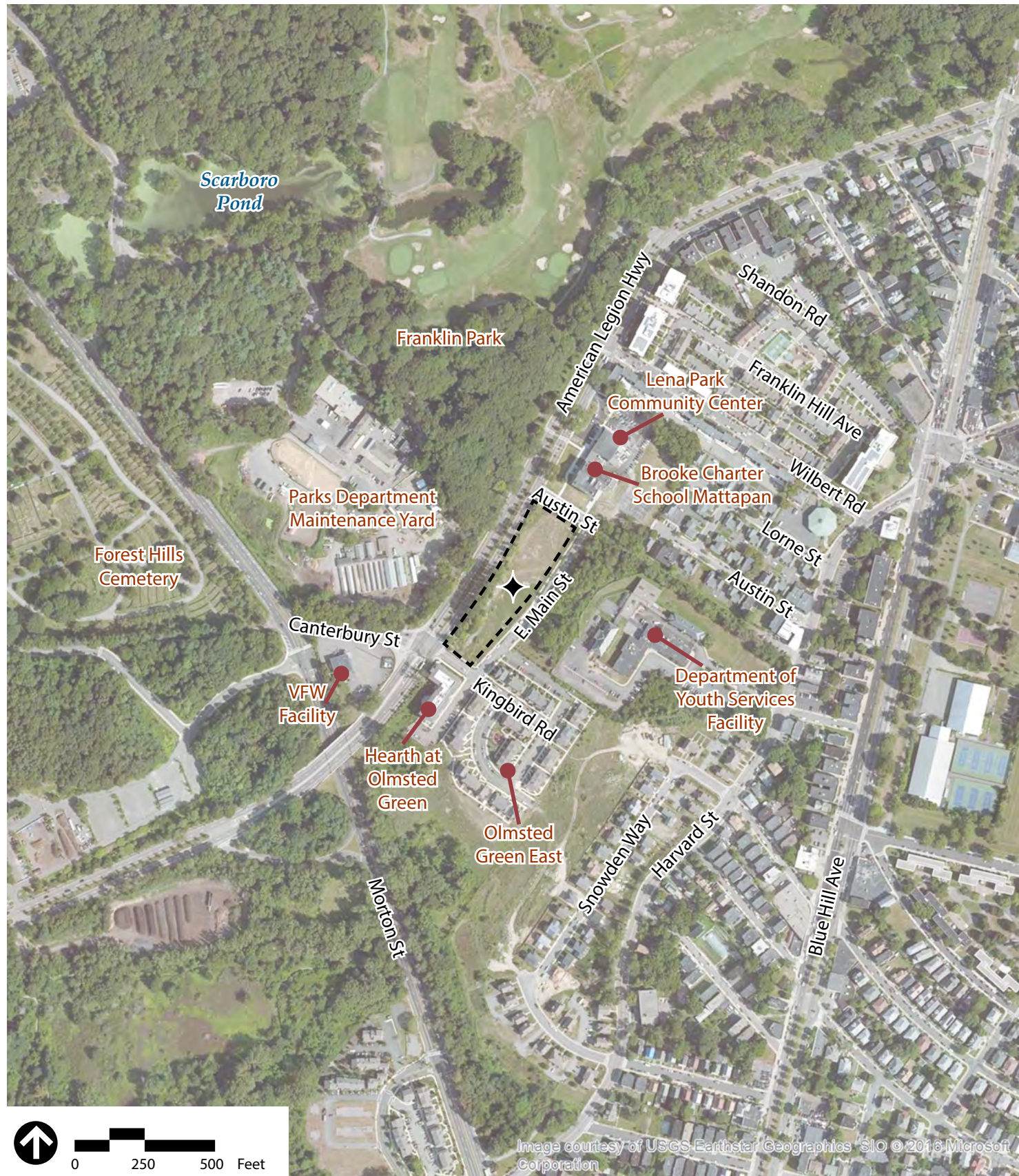




Site Location Map







Project Site Context







Existing Conditions







American Legion Highway and Austin Street



American Legion Highway and Kingbird Road



Kingbird Road and Main Street

Existing Site Photographs







Proposed Conditions





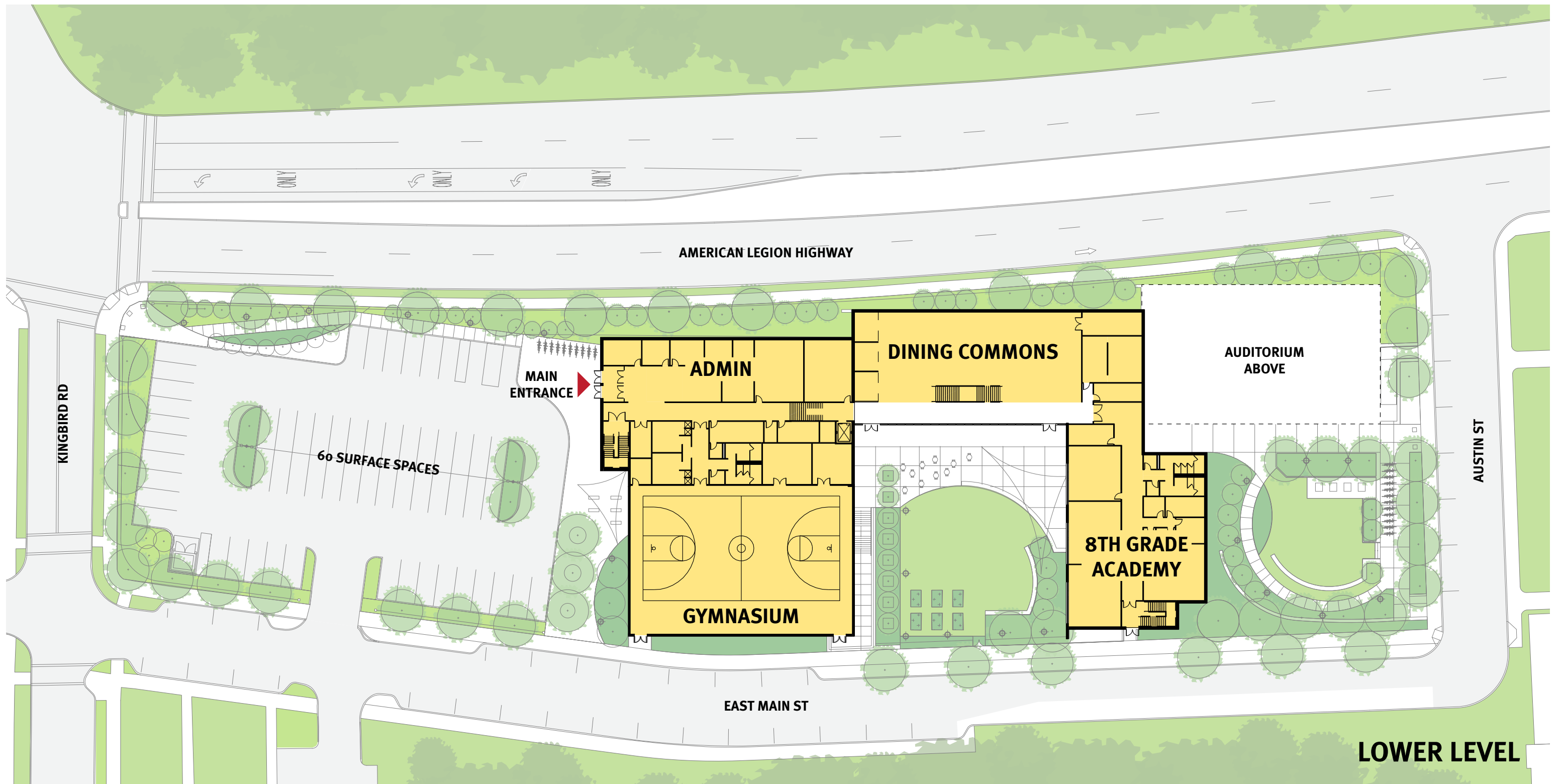


Proposed Rendering

ARROWSTREET BROOKE CHARTER HIGH SCHOOL





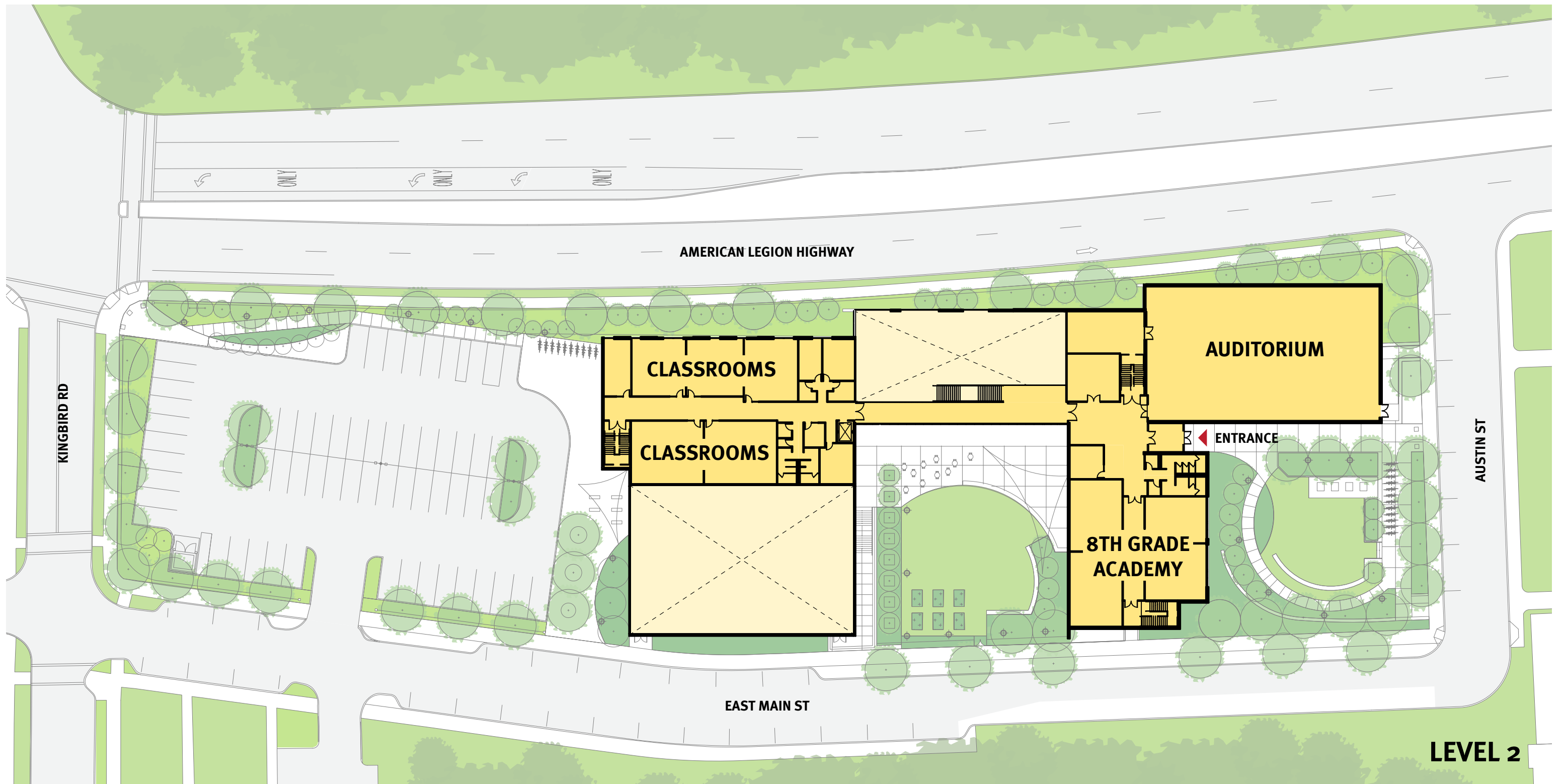


**LOWER LEVEL**

Project Floorplans





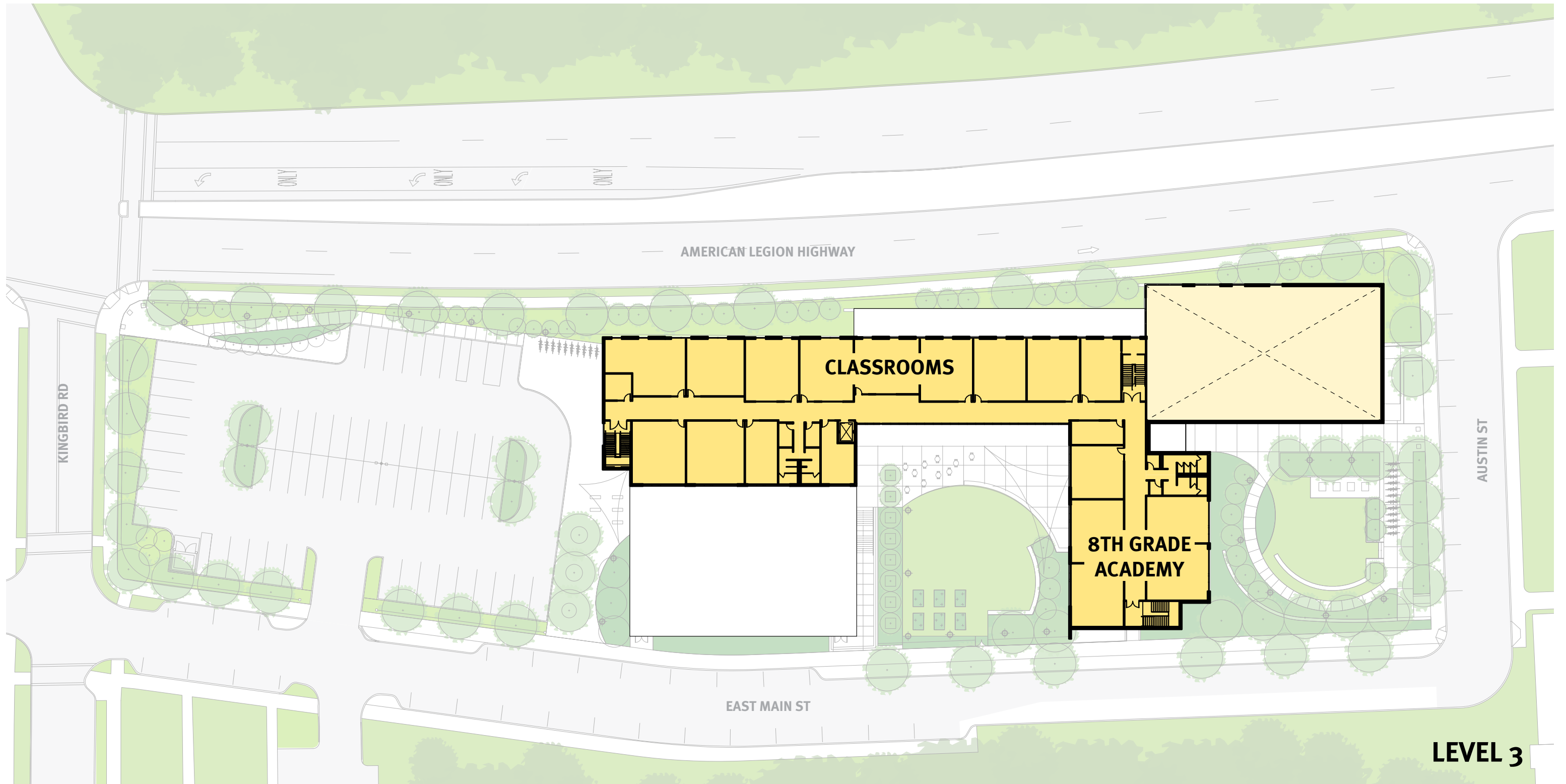


**LEVEL 2**

Project Floorplans





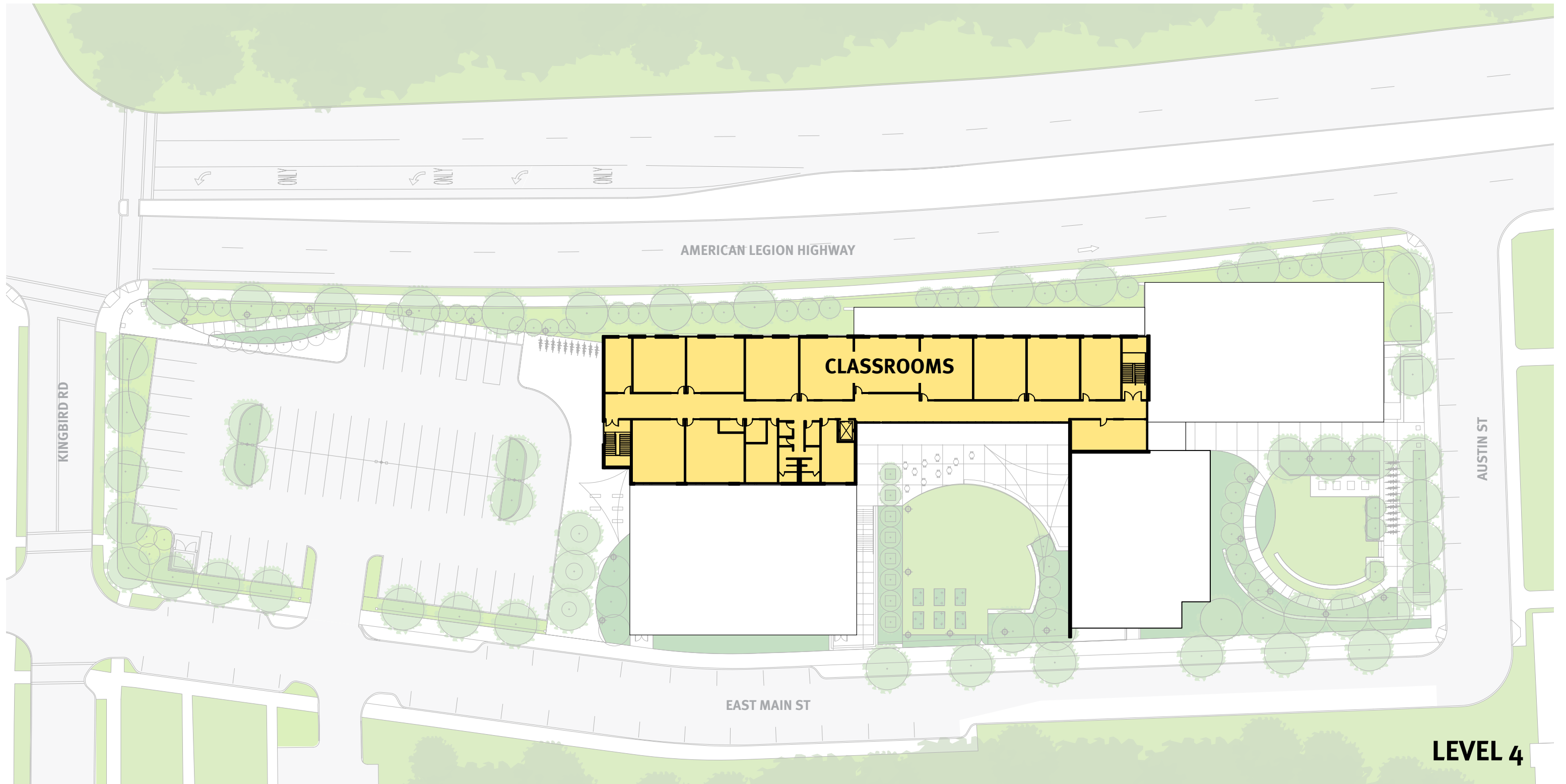


**LEVEL 3**

Project Floorplans





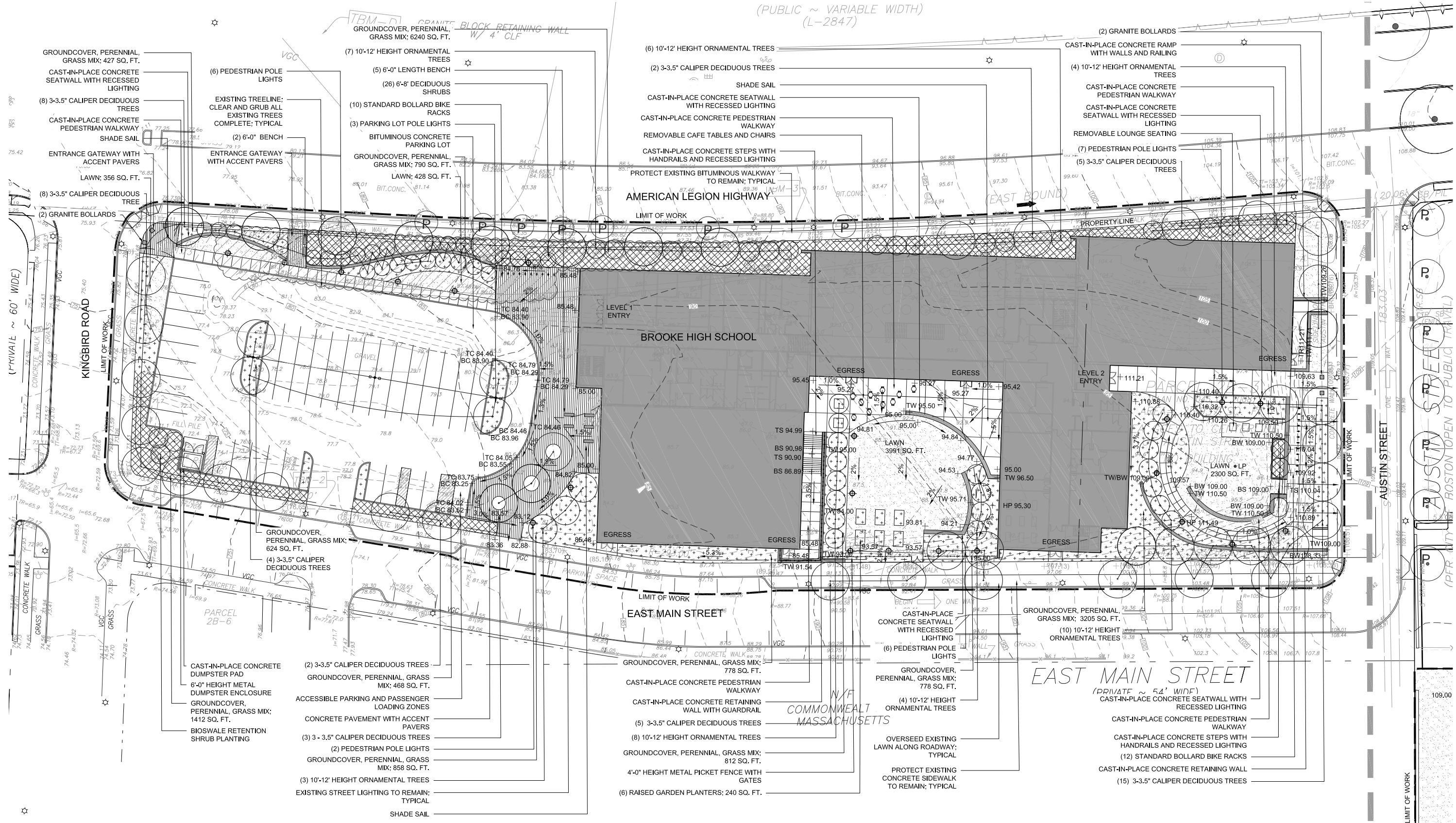


**LEVEL 4**

Project Floorplans







Landscaping Plan







Lena Park American Legion Highway Perspective



Lena Park Austin Street Perspective



Architecture  
 Urban Design / Planning  
 Landscape Architecture  
 Graphic Design  
 ICON architecture, inc.  
 Thirty Eight Chauncy Street  
 Boston, Massachusetts 02111  
 tel: 617/451-3333  
 fax: 617/451-1328  
 email: icon@iconarch.com

Figure 3-5

Olmsted East - Lena Park  
 Olmsted Green  
 Lena New Boston  
 October 31, 2005

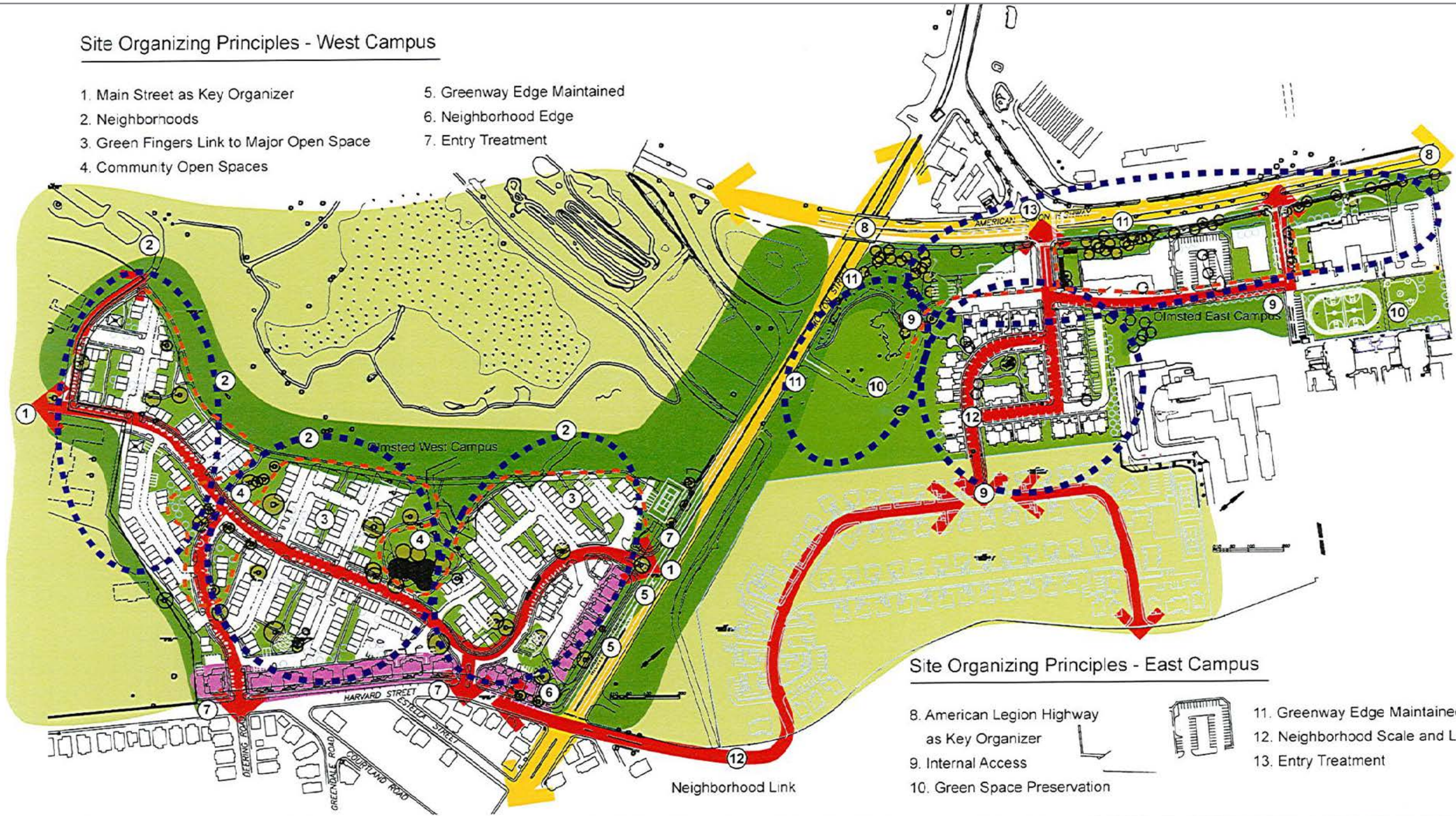
2005 Olmsted Green - Lena New Boston





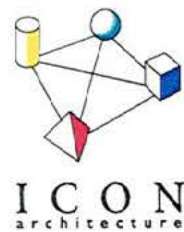
Site Organizing Principles - West Campus

- 1. Main Street as Key Organizer
- 2. Neighborhoods
- 3. Green Fingers Link to Major Open Space
- 4. Community Open Spaces
- 5. Greenway Edge Maintained
- 6. Neighborhood Edge
- 7. Entry Treatment



Site Organizing Principles - East Campus

- 8. American Legion Highway as Key Organizer
- 9. Internal Access
- 10. Green Space Preservation
- 11. Greenway Edge Maintained
- 12. Neighborhood Scale and Link
- 13. Entry Treatment



Architecture  
Urban Design / Planning  
Landscape Architecture  
Graphic Design

ICON architecture, inc.  
Thirty Eight Chauncy Street  
Boston, Massachusetts 02111  
tel: 617/451-3333  
fax: 617/451-1328  
email: icon@iconarch.com

Figure 4-6

Olmsted Green - Site Organizing Principles Diagram

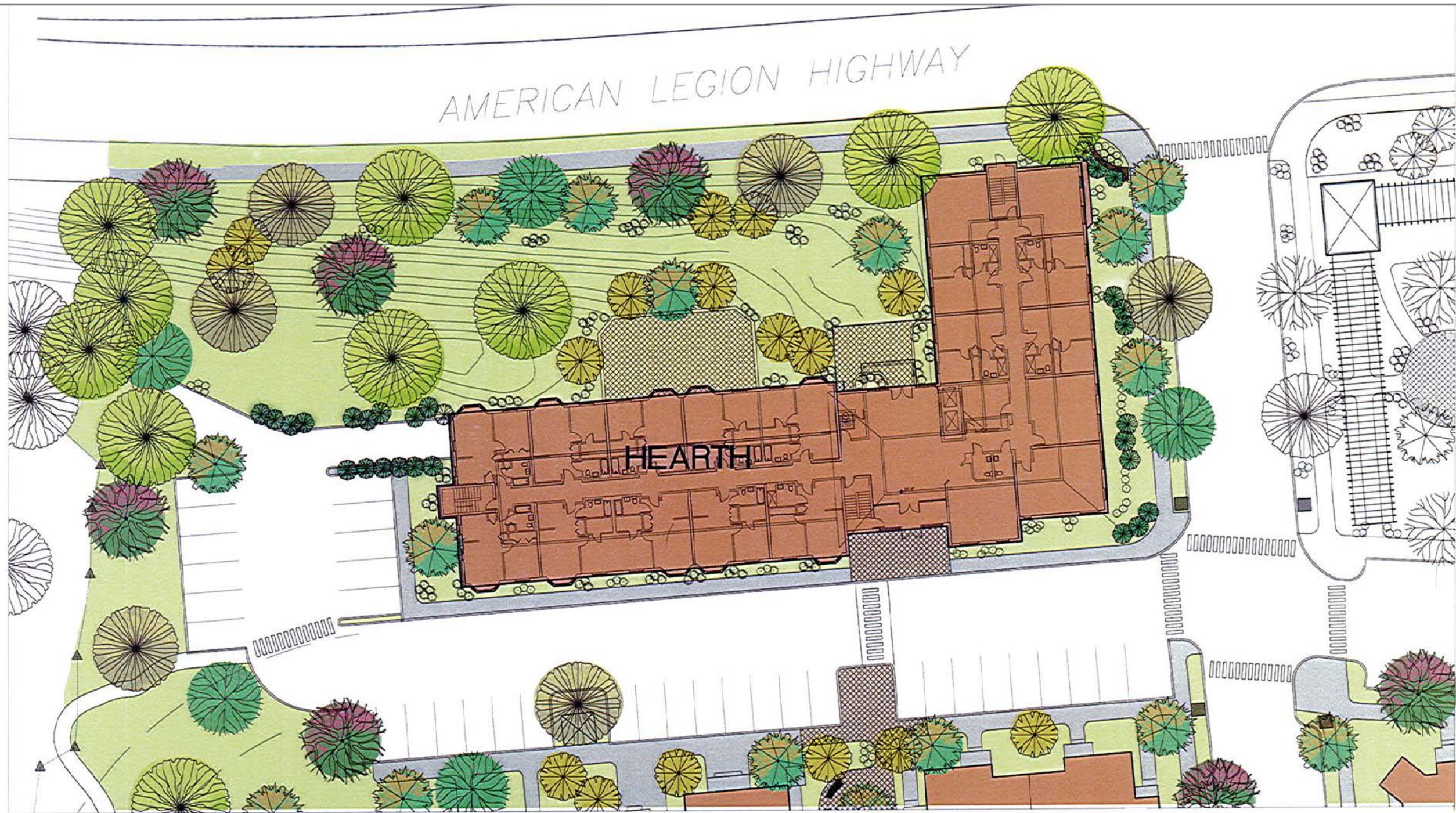
Olmsted Green  
Lena New Boston

October 31, 2005

2005 Olmstead Green - Lena New Boston







**The Architectural Team, Inc.**

50 Commandant's Way  
at Admiral's Hill  
Chelsea, Massachusetts 02150  
Tel: 617.889.4402  
Fax: 671.884.4329

**ROJAS GROUP, INC.**

Architecture • Landscape Architecture  
Interior Design • Planning  
211 Congress Street  
Suite 200  
Boston, Massachusetts 02110  
Tel: 617.720.4100  
Fax: 671.523.2918

**Figure 3-17**

Olmsted East  
Hearth

**Olmsted Green**

Lena New Boston

October 31, 2005

2005 Olmsted Green - Lena New Boston







**The Architectural Team, Inc.**

50 Commandant's Way  
 at Admiral's Hill  
 Chelsea, Massachusetts 02150  
 Tel: 617.889.4402  
 Fax: 671.884.4329

**ROJAS GROUP, INC.**

Architecture • Landscape Architecture  
 Interior Design • Planning  
 211 Congress Street  
 Suite 200  
 Boston, Massachusetts 02110  
 Tel: 617.720.4100  
 Fax: 671.523.2918

**Figure 3-18**

Olmsted East  
 Vinfen

**Olmsted Green**

Lena New Boston

October 31, 2005

2005 Olmstead Green - Lena New Boston







Rendering from American Legion Highway

ARROWSTREET

BROOKE CHARTER HIGH SCHOOL

