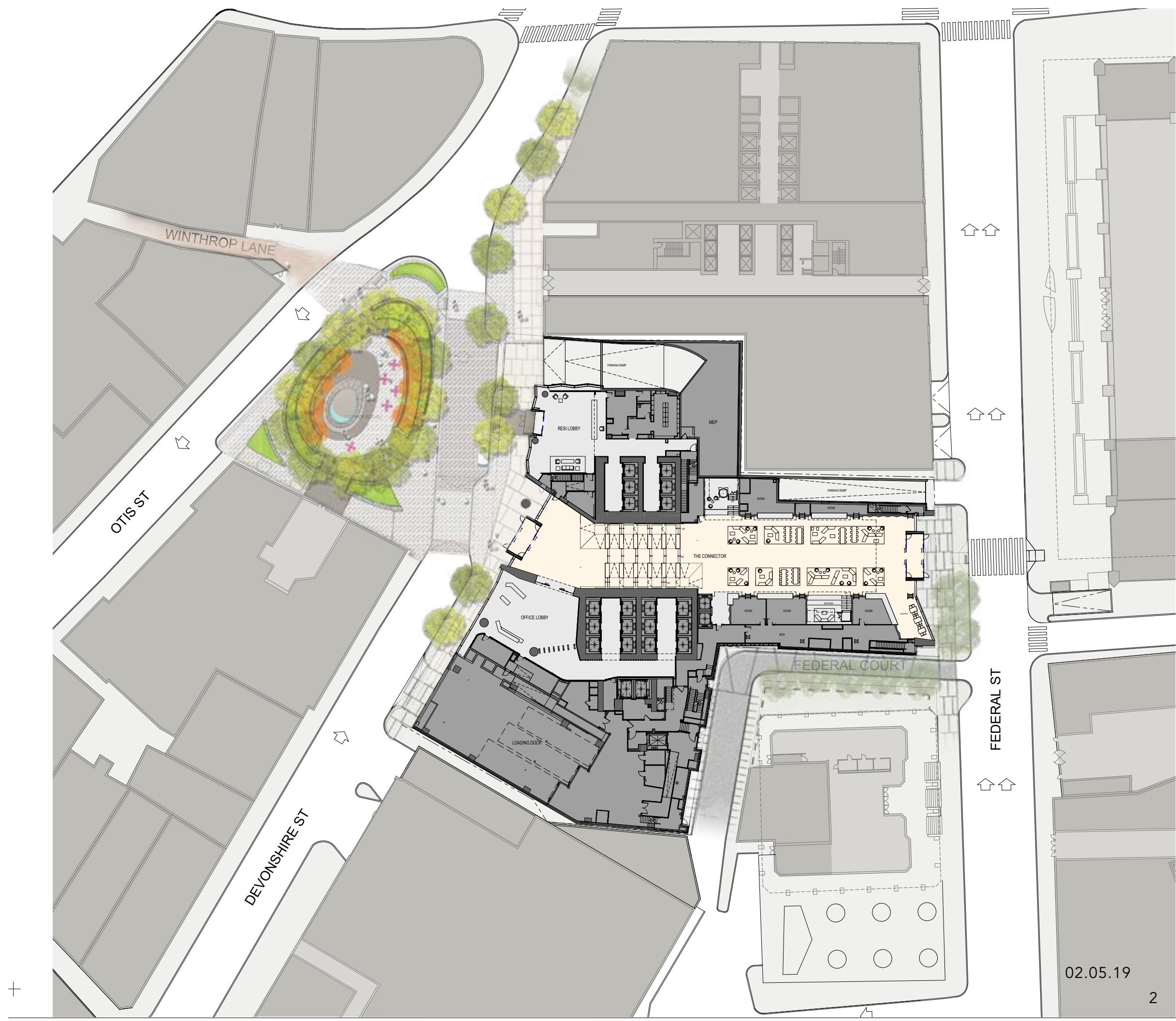
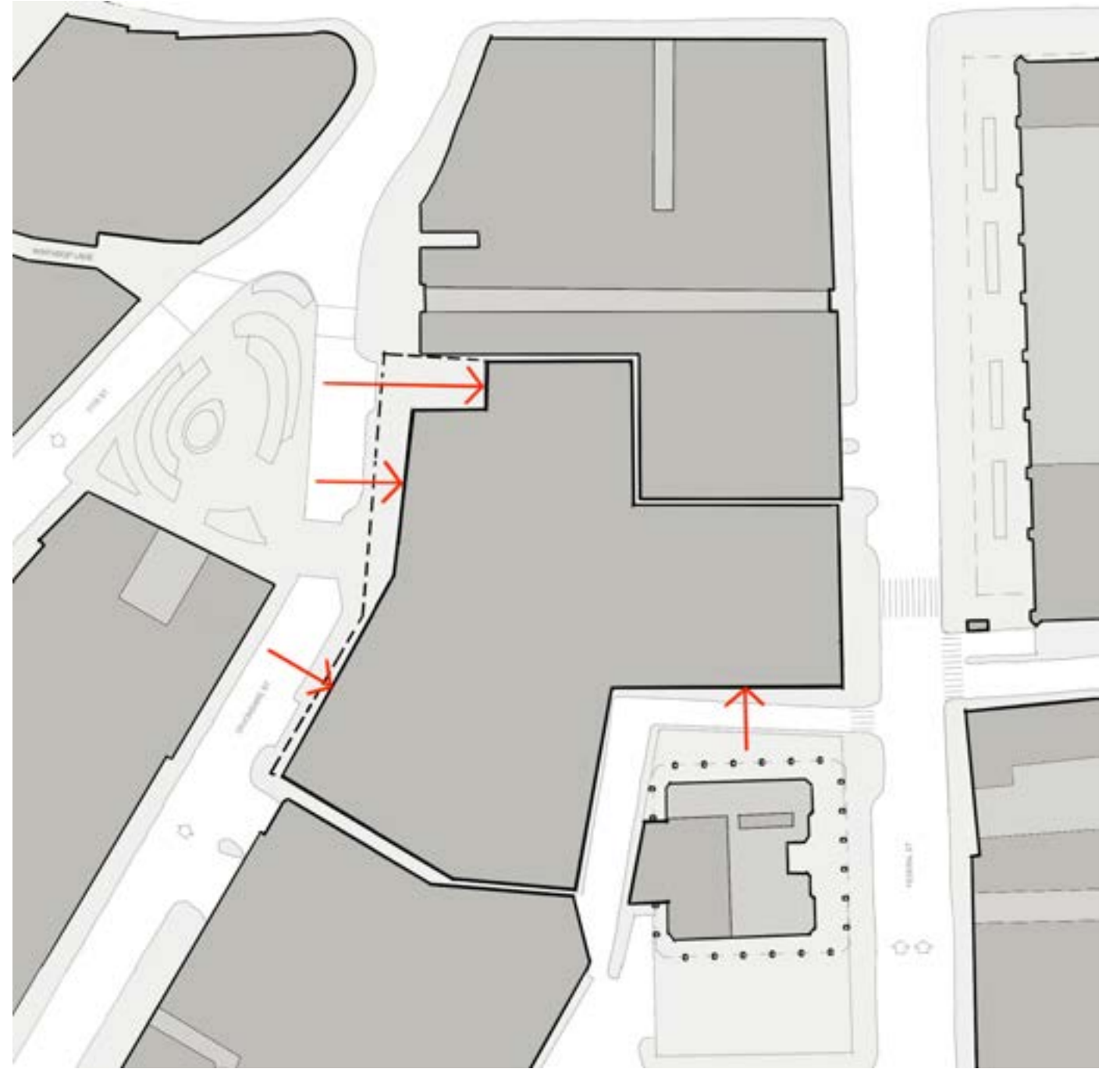
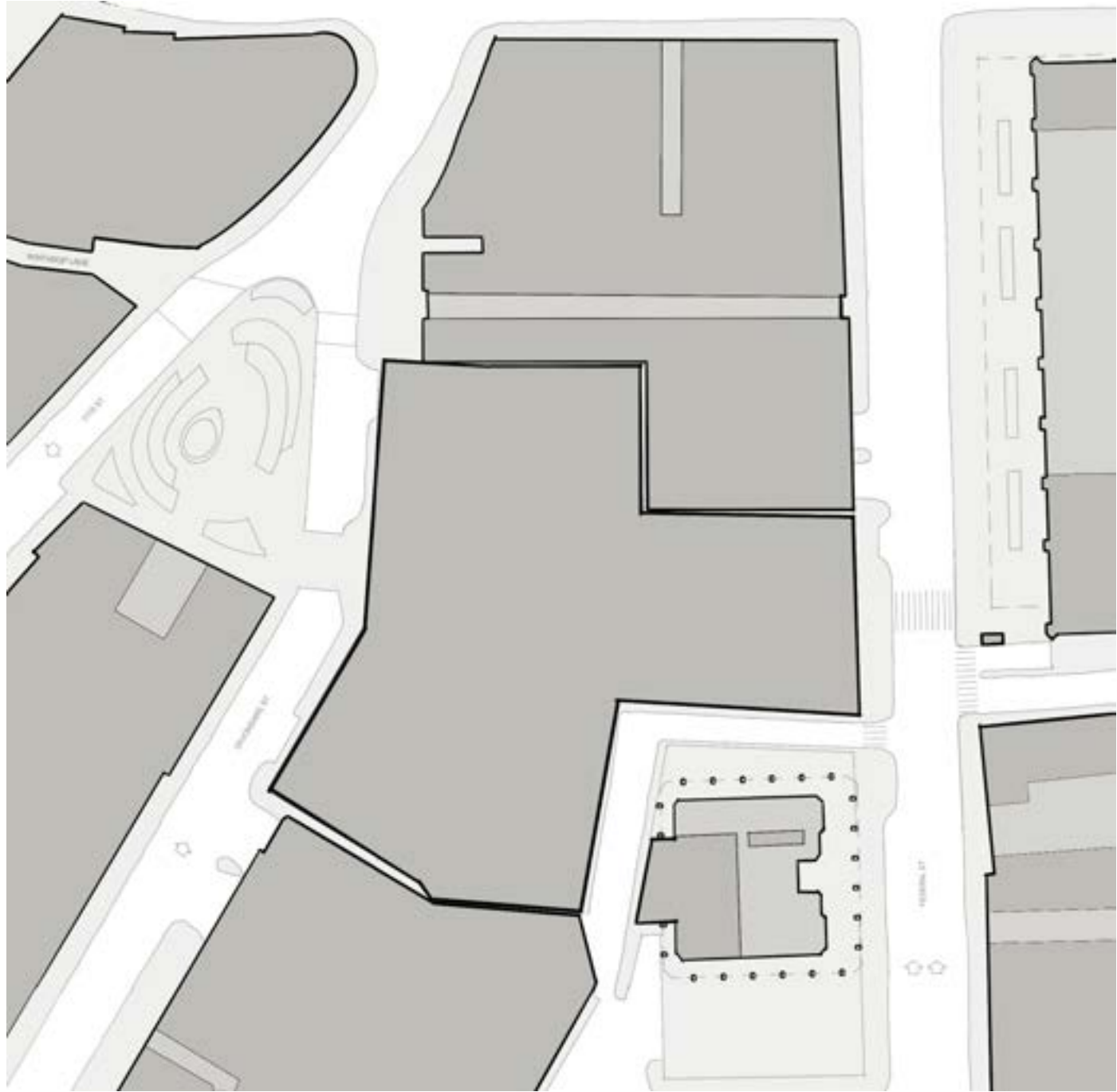


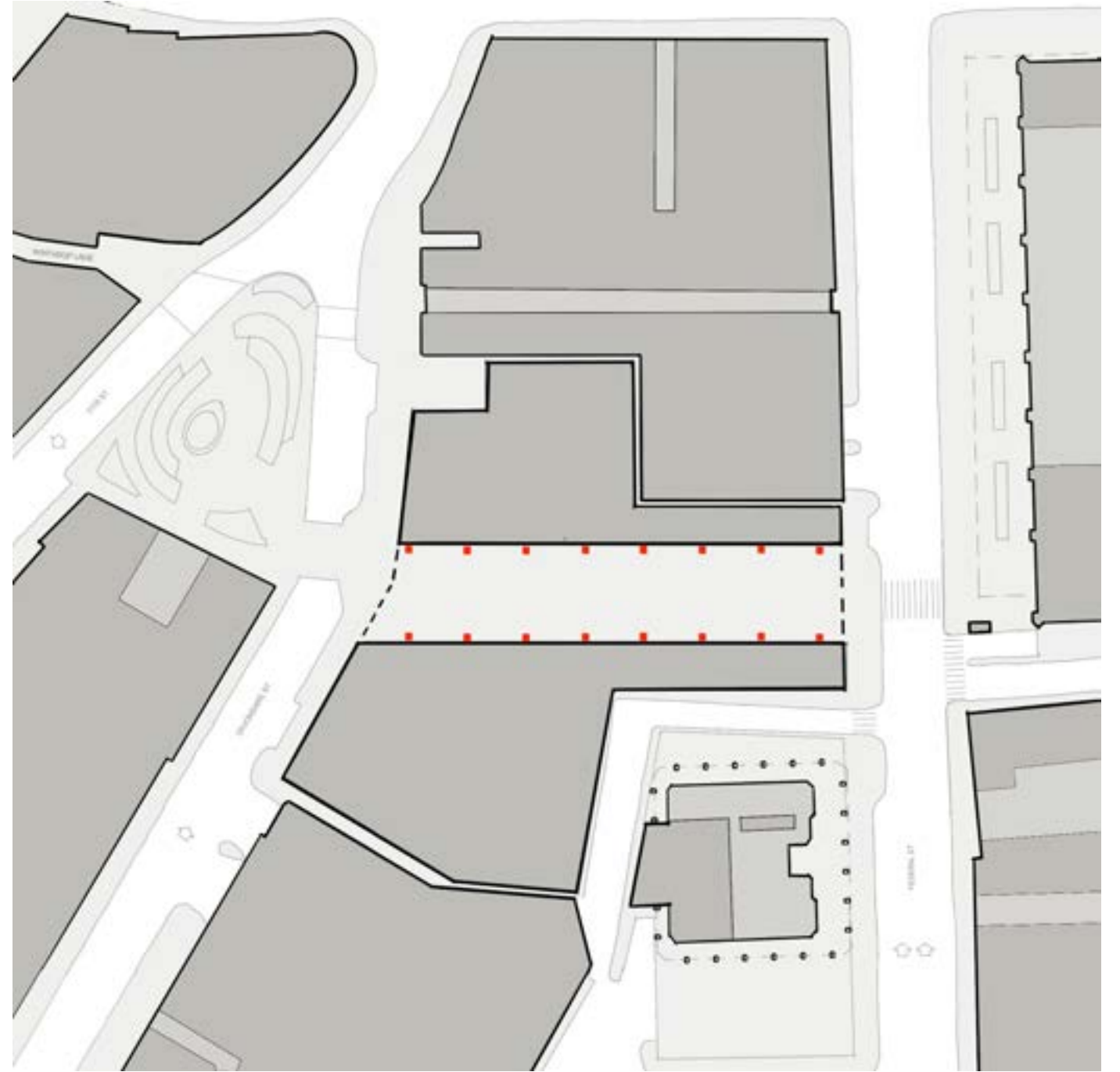
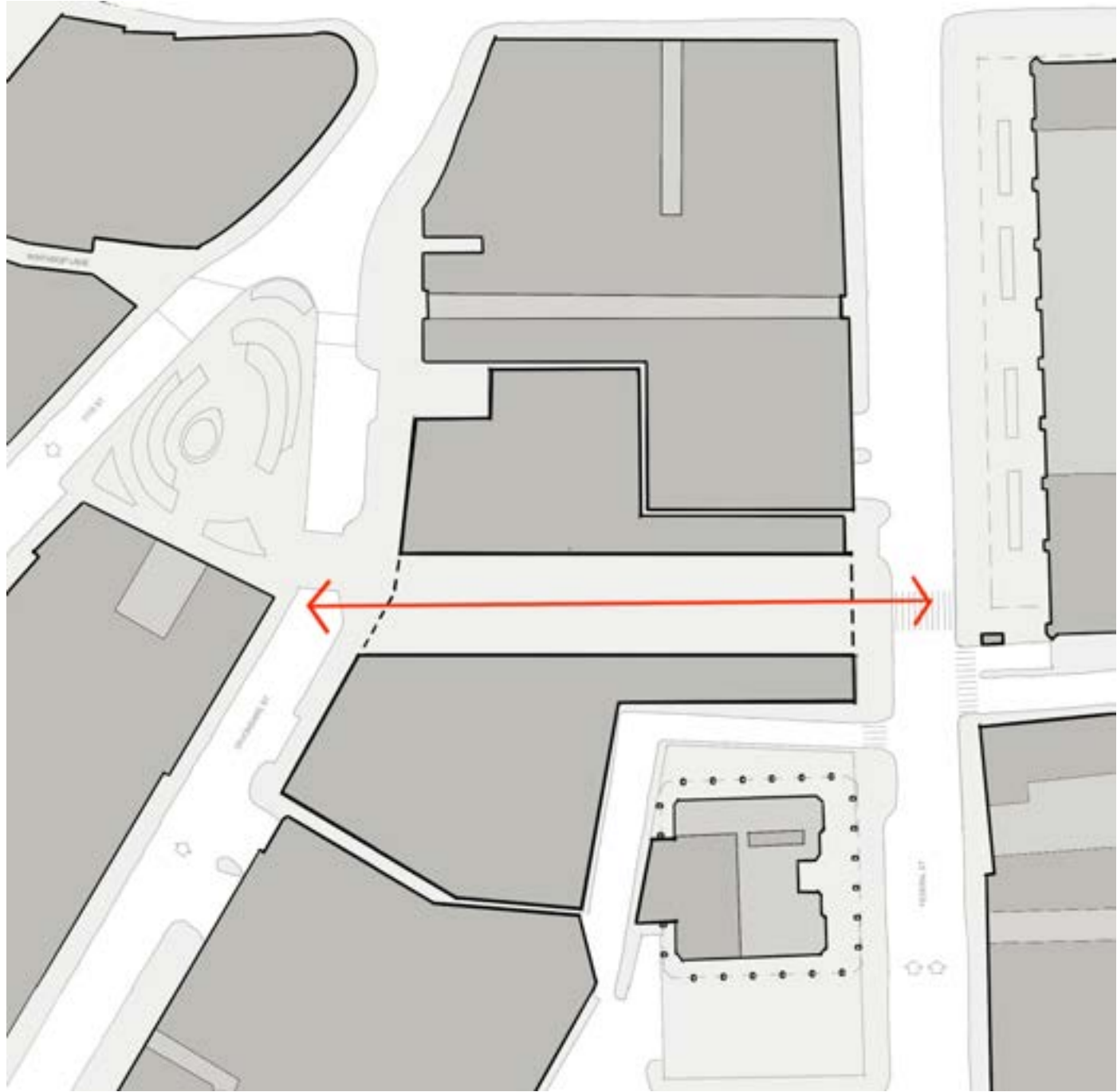
WSQ

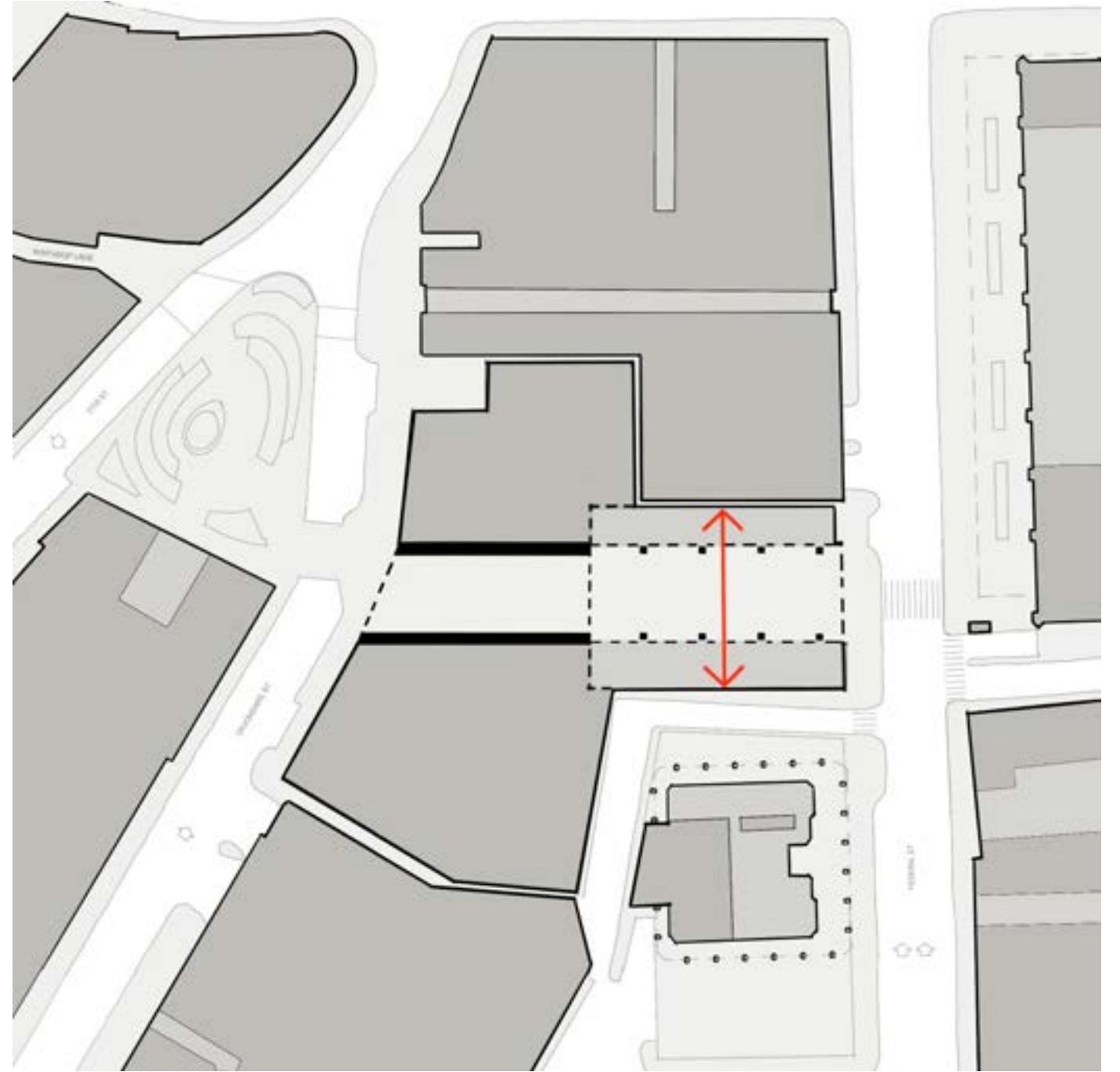
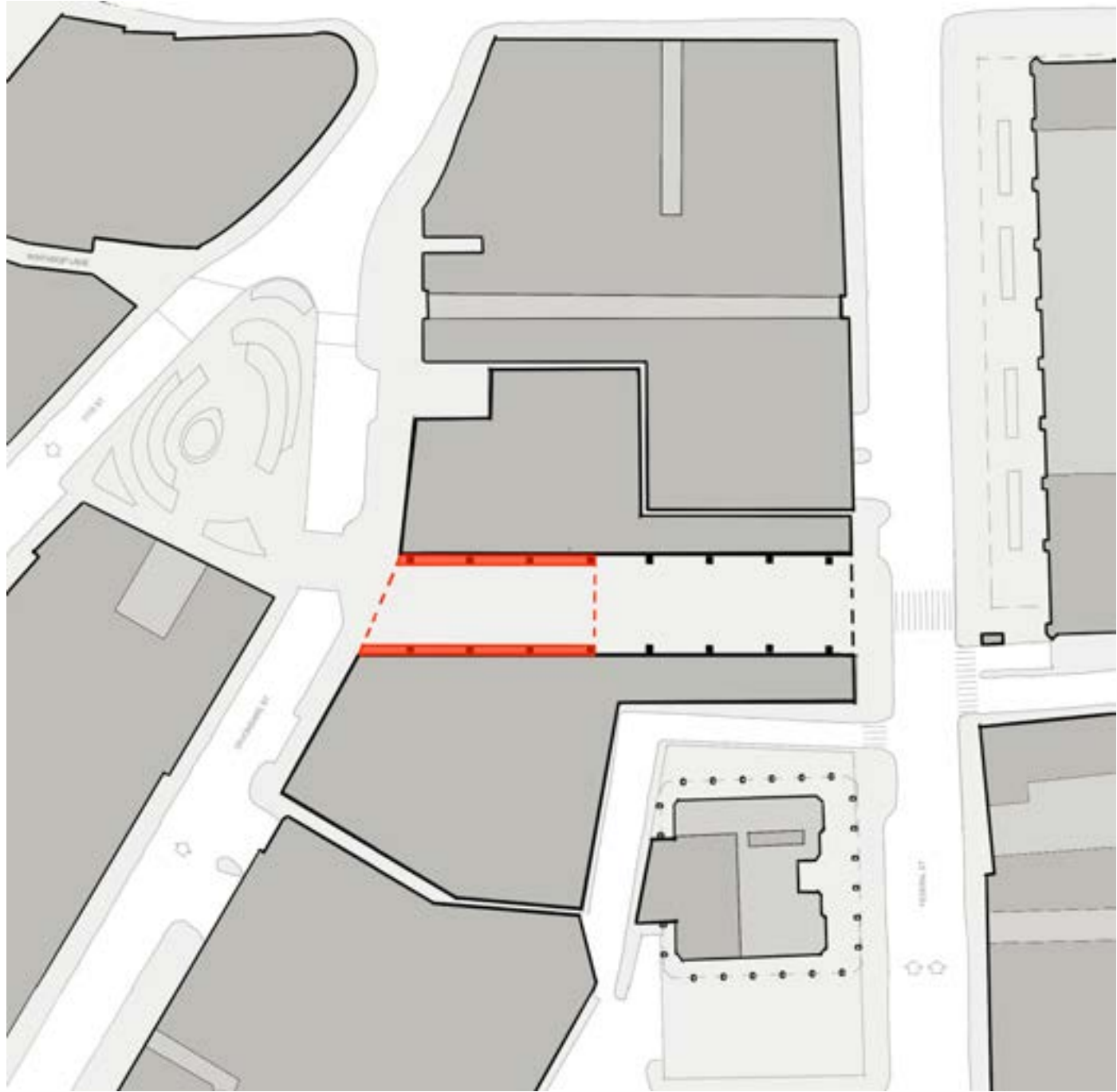
BCDC
02/05/2019

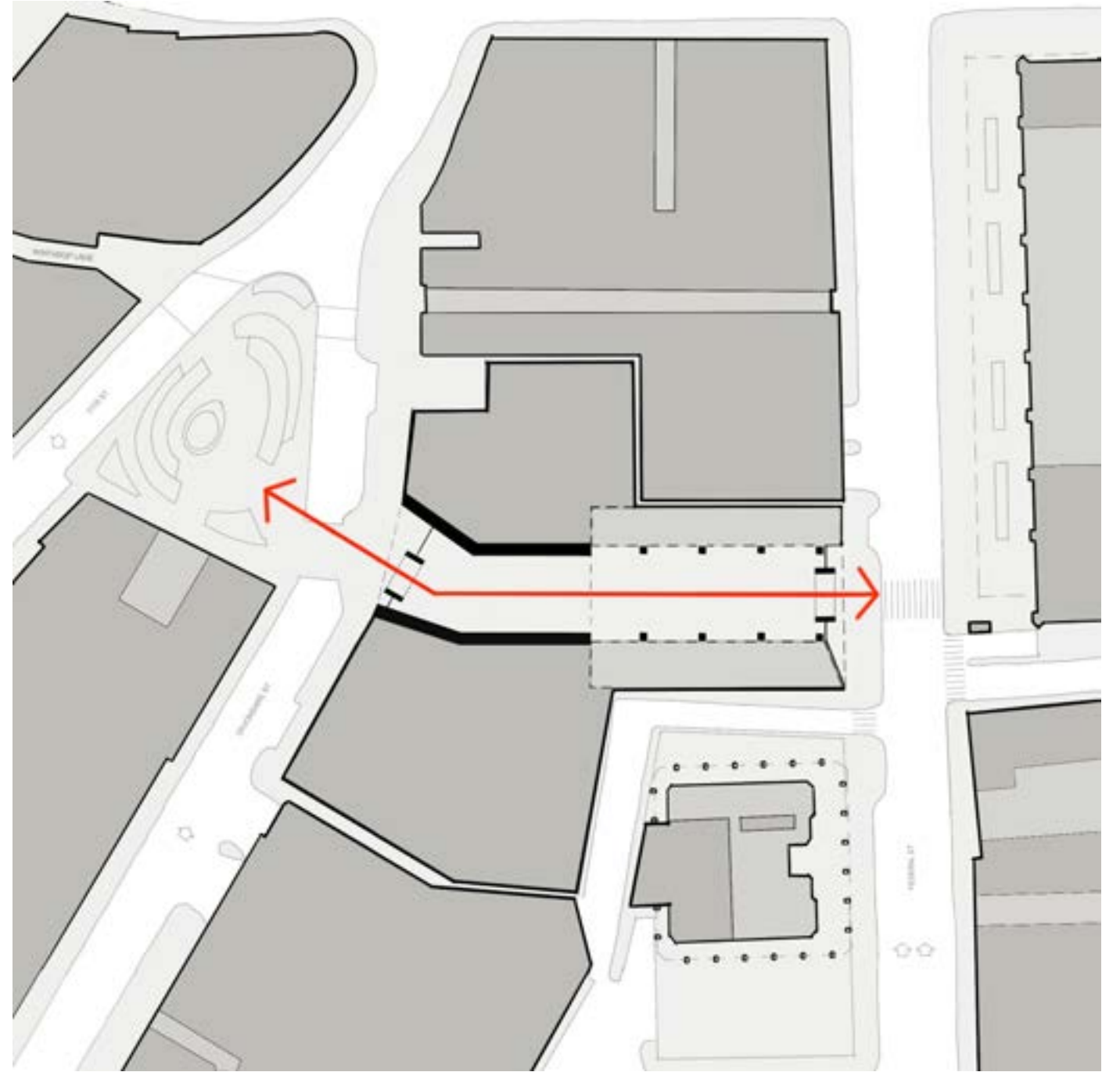
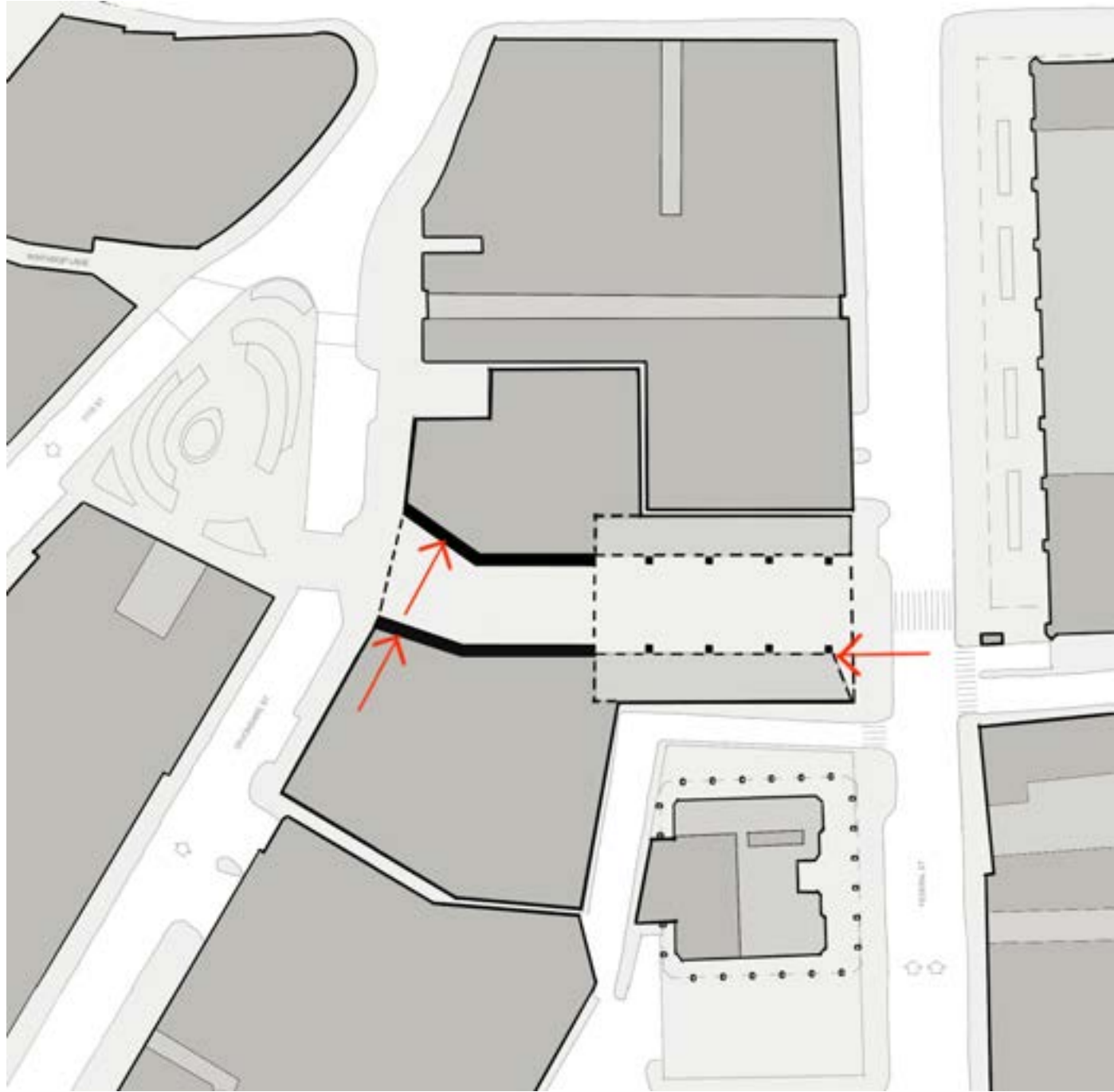
PUBLIC SPACE PLAN

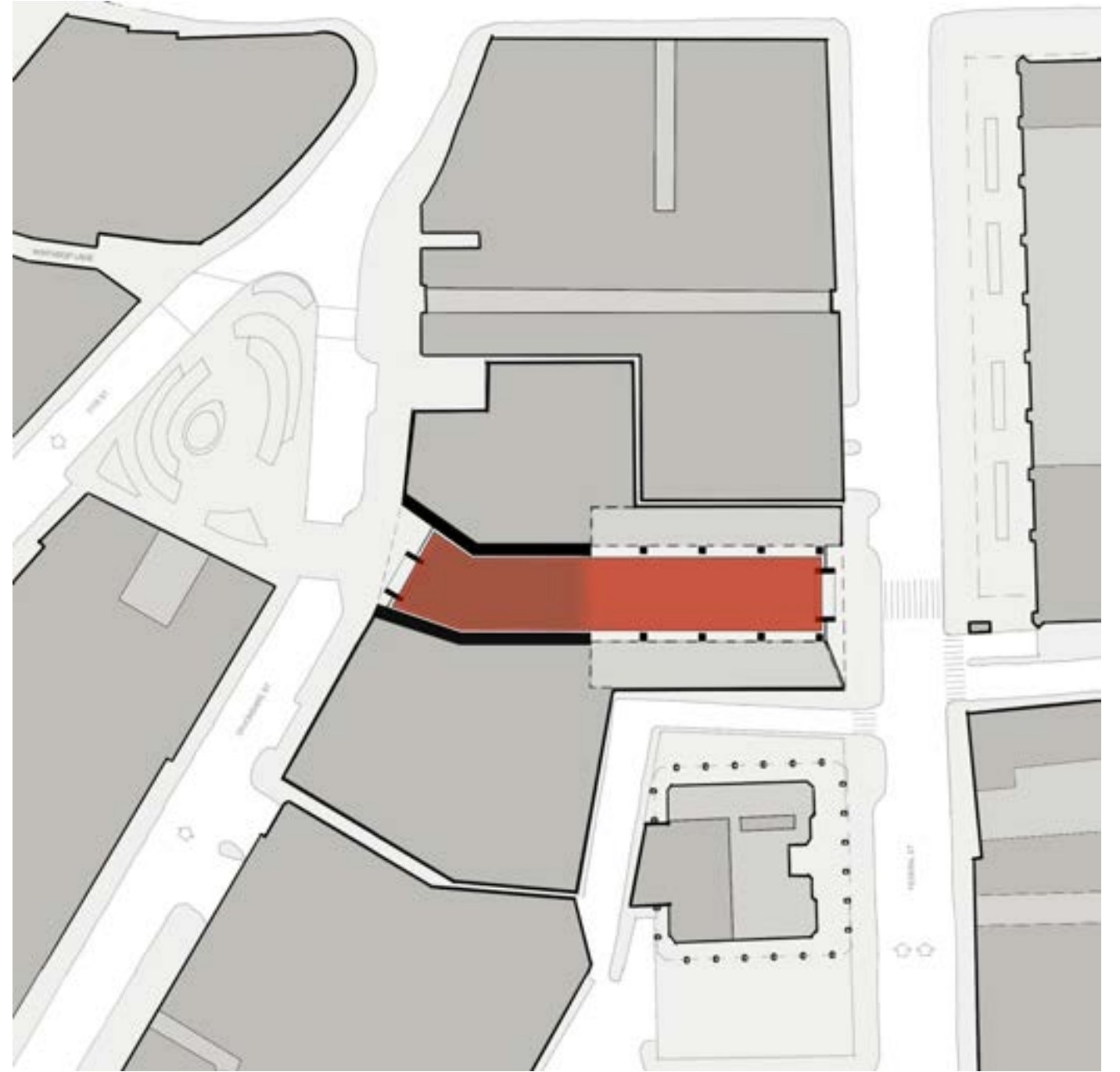
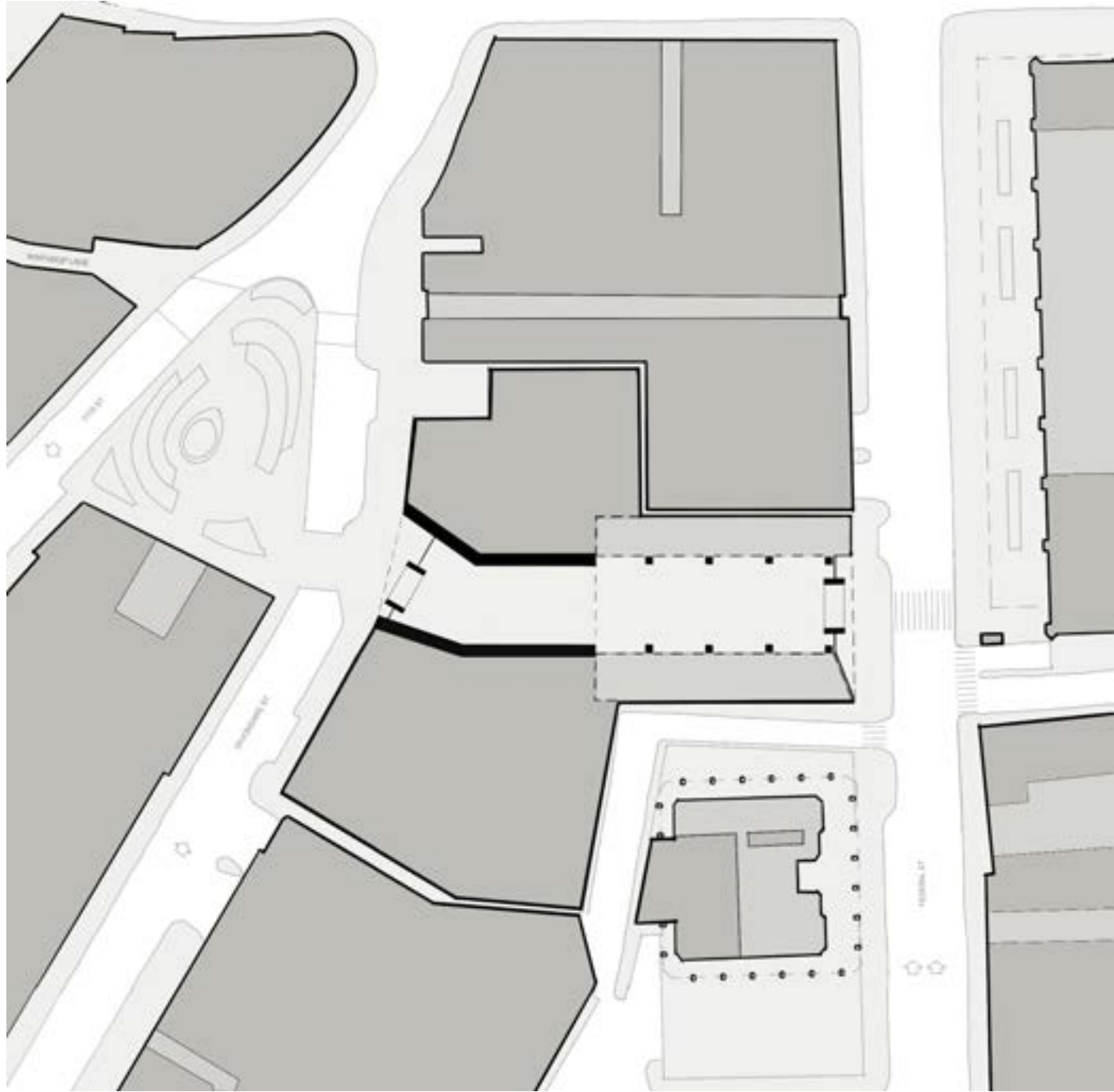


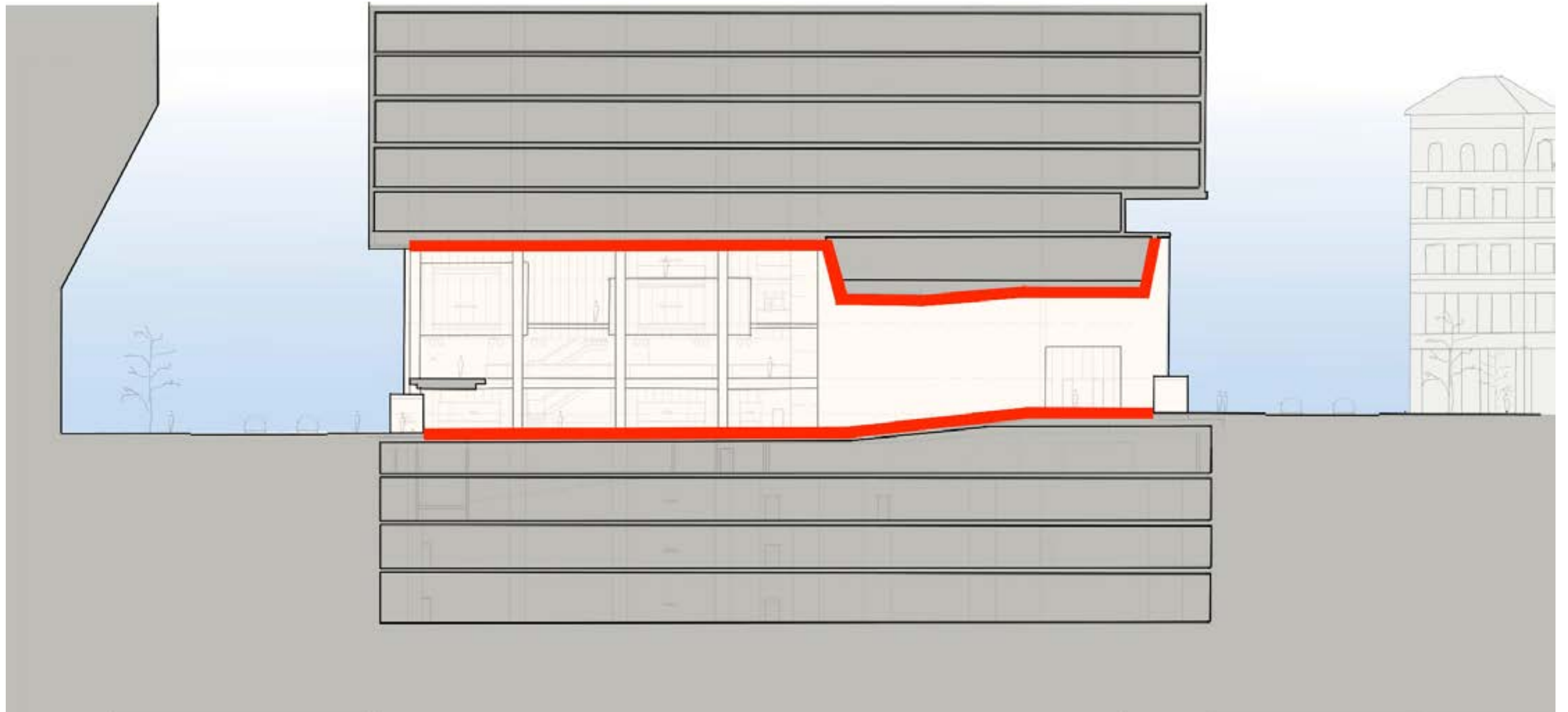












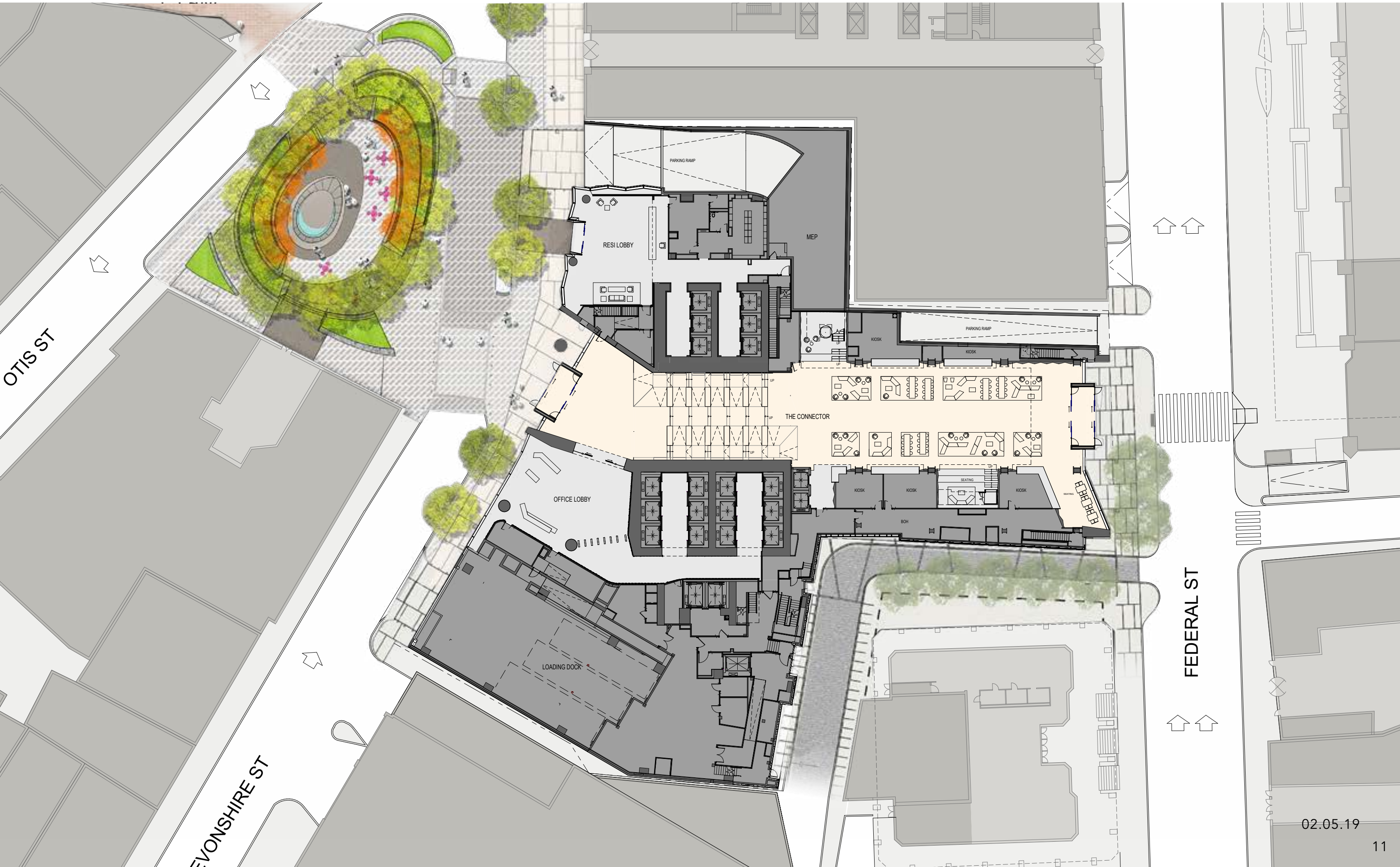
THE CONNECTOR_LONGITUDINAL SECTION-1



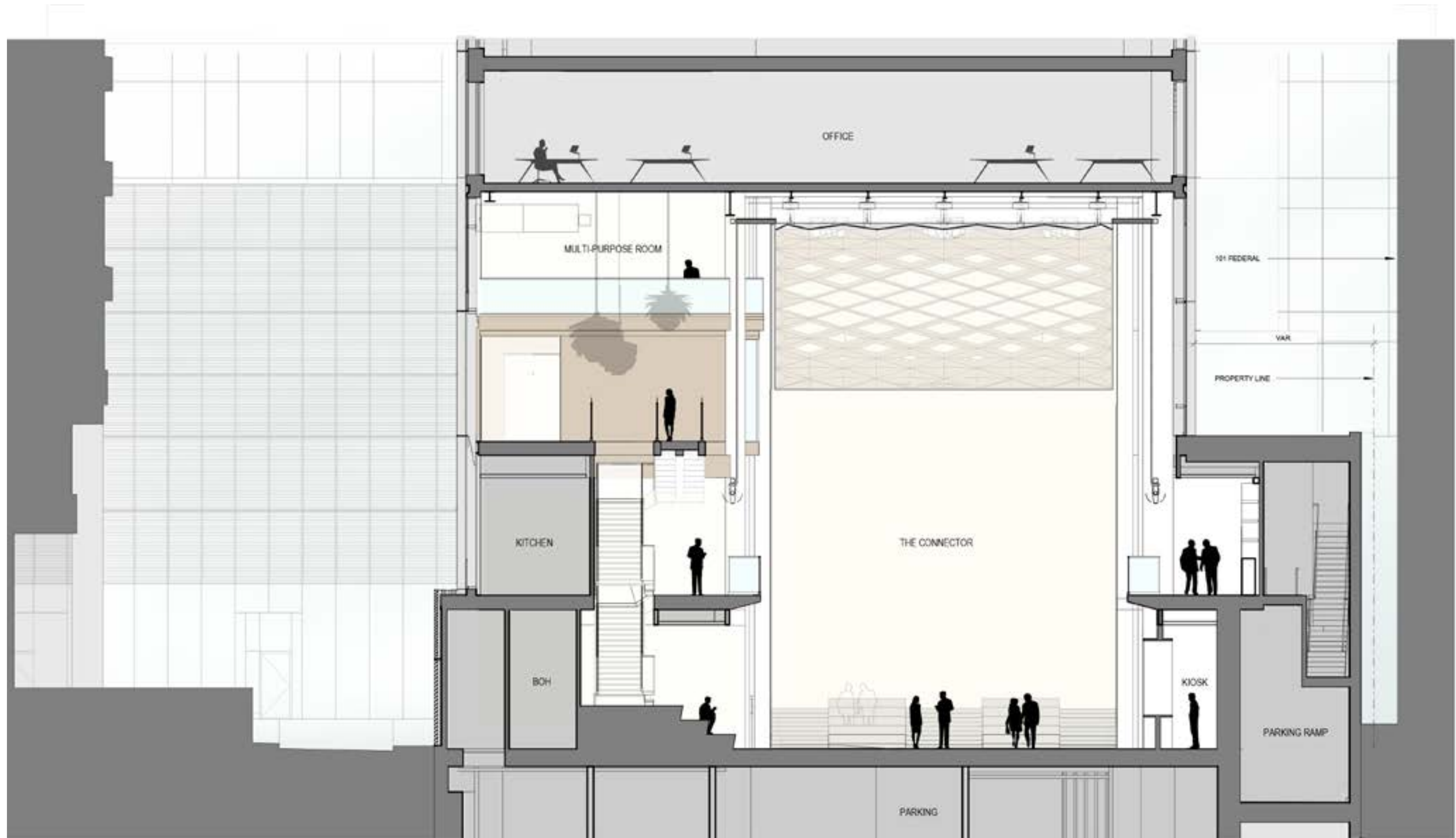
THE CONNECTOR_LONGITUDINAL SECTION-2



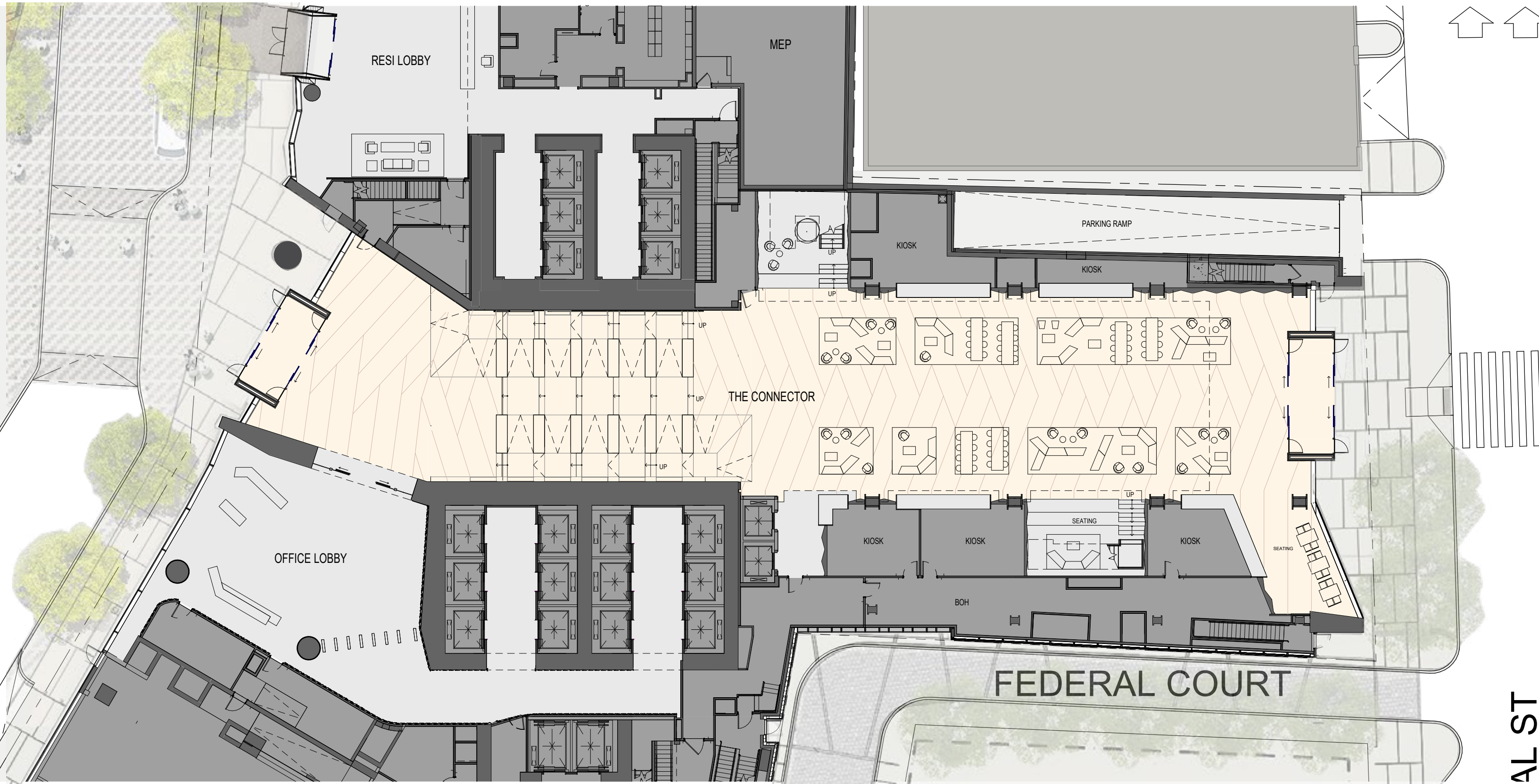
GROUND FLOOR PLAN



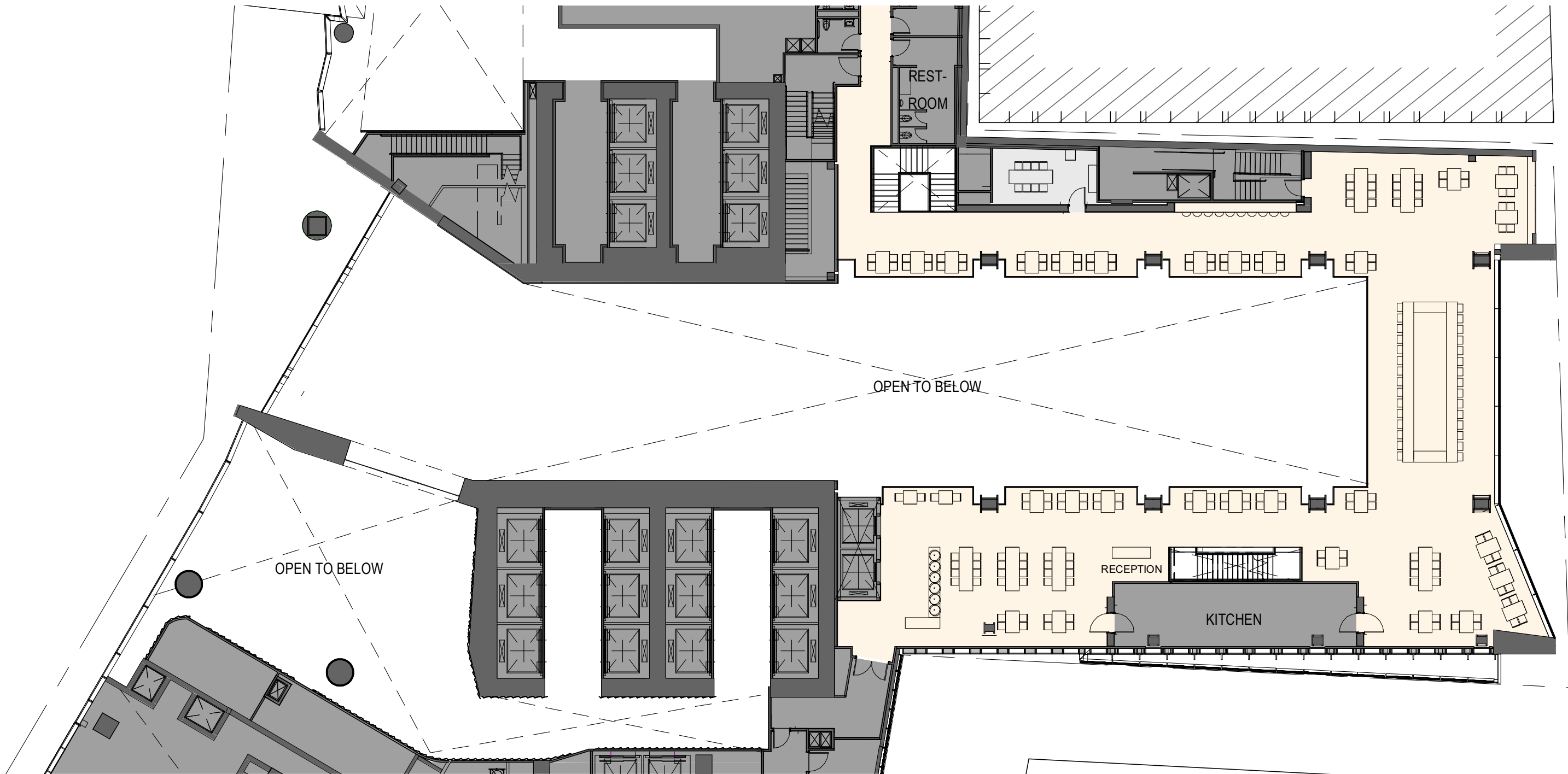
THE CONNECTOR CROSS SECTION



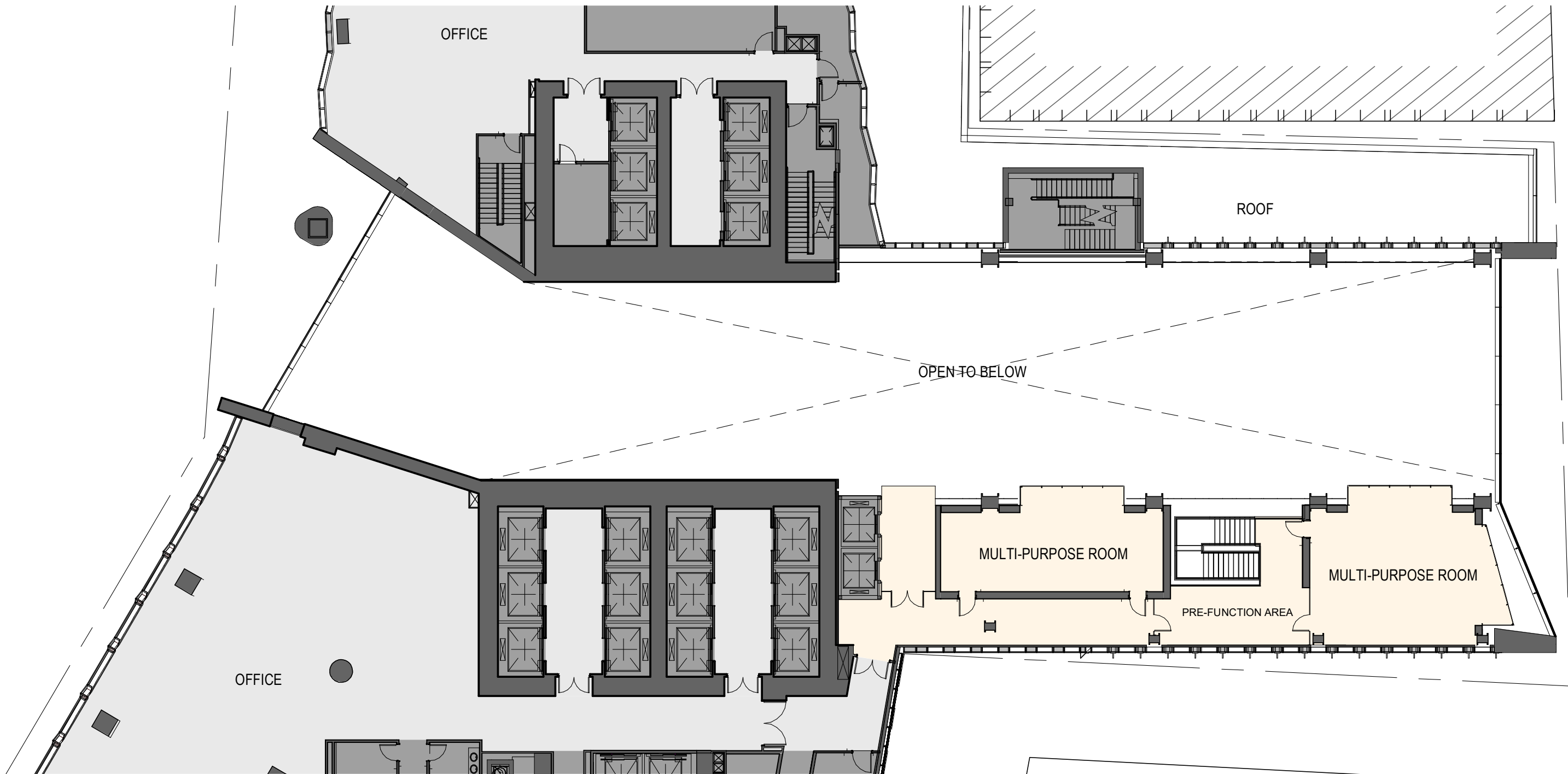
GROUND FLOOR PLAN

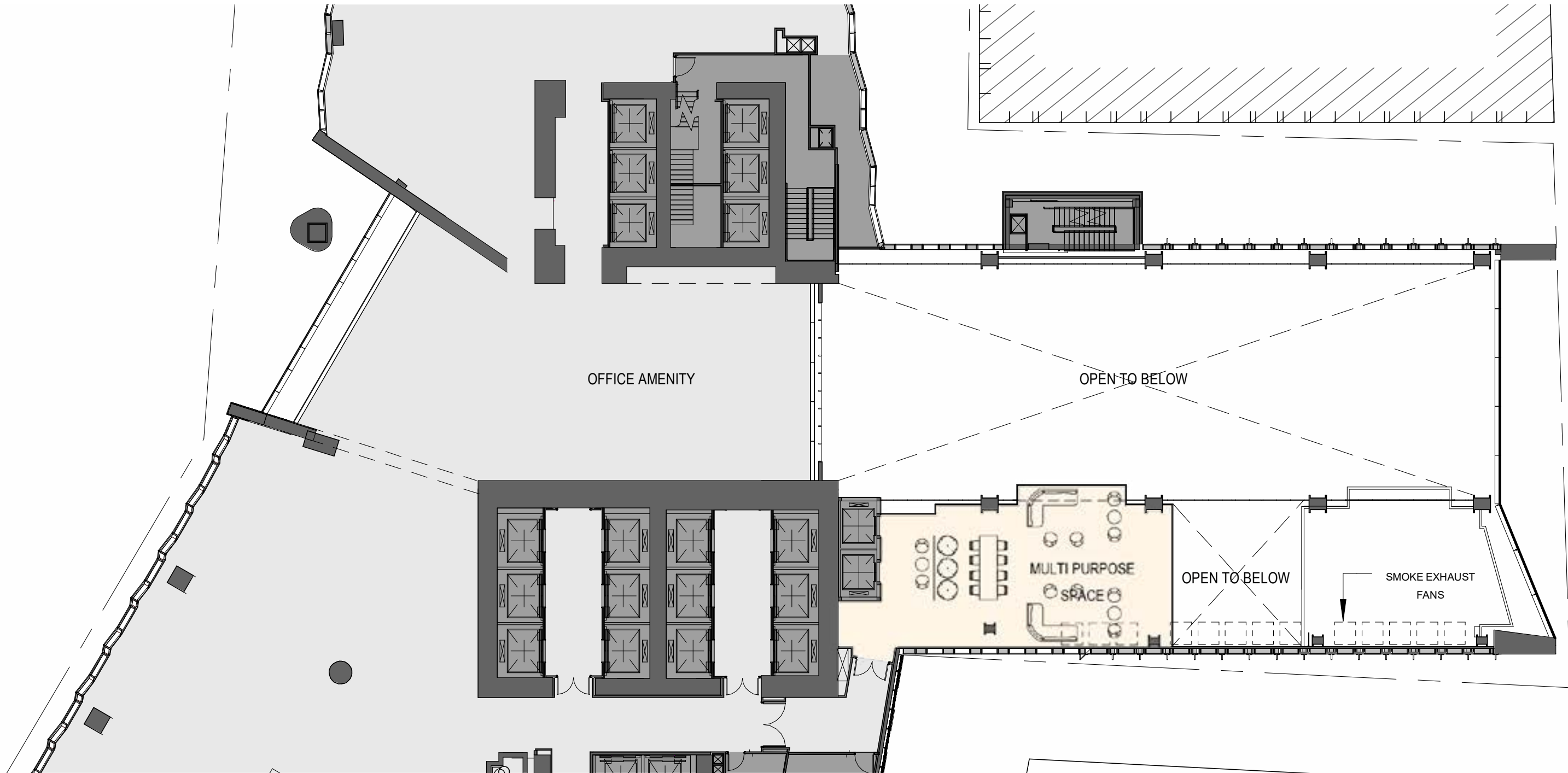


MEZZANINE PLAN



LEVEL 2





WEST PODIUM



EAST TOWER PODIUM



EAST TOWER PODIUM







PORTAL RAMP
AN INTERACTIVE EXPERIENCE



THE PORTAL DIGITAL EXPERIENCE



Predefined “Widgets” overlay data & information atop any background content, displaying building energy savings, time and temperature or daily bike rides.



Large-scale macro photography of nature recreates images of local flora and fauna at a larger-than-life scale



Simulated water feature cascades stunning water images along the interior space, seemingly interacting with any people or physical objects in its path.



Seasonal programming celebrates the beloved annual events that bring the city together in celebration of our diversity and shared history.



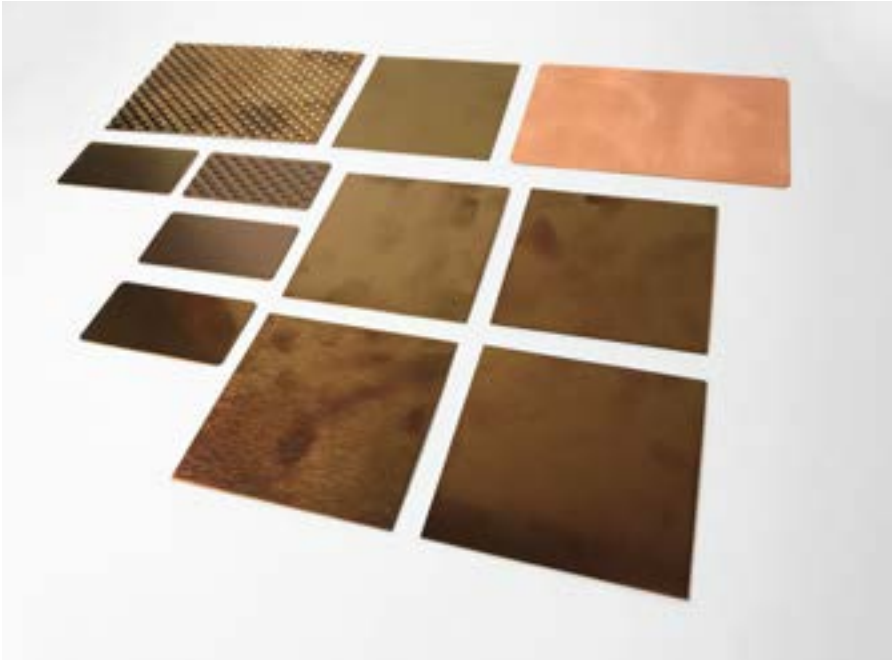








MATERIAL PALETTE

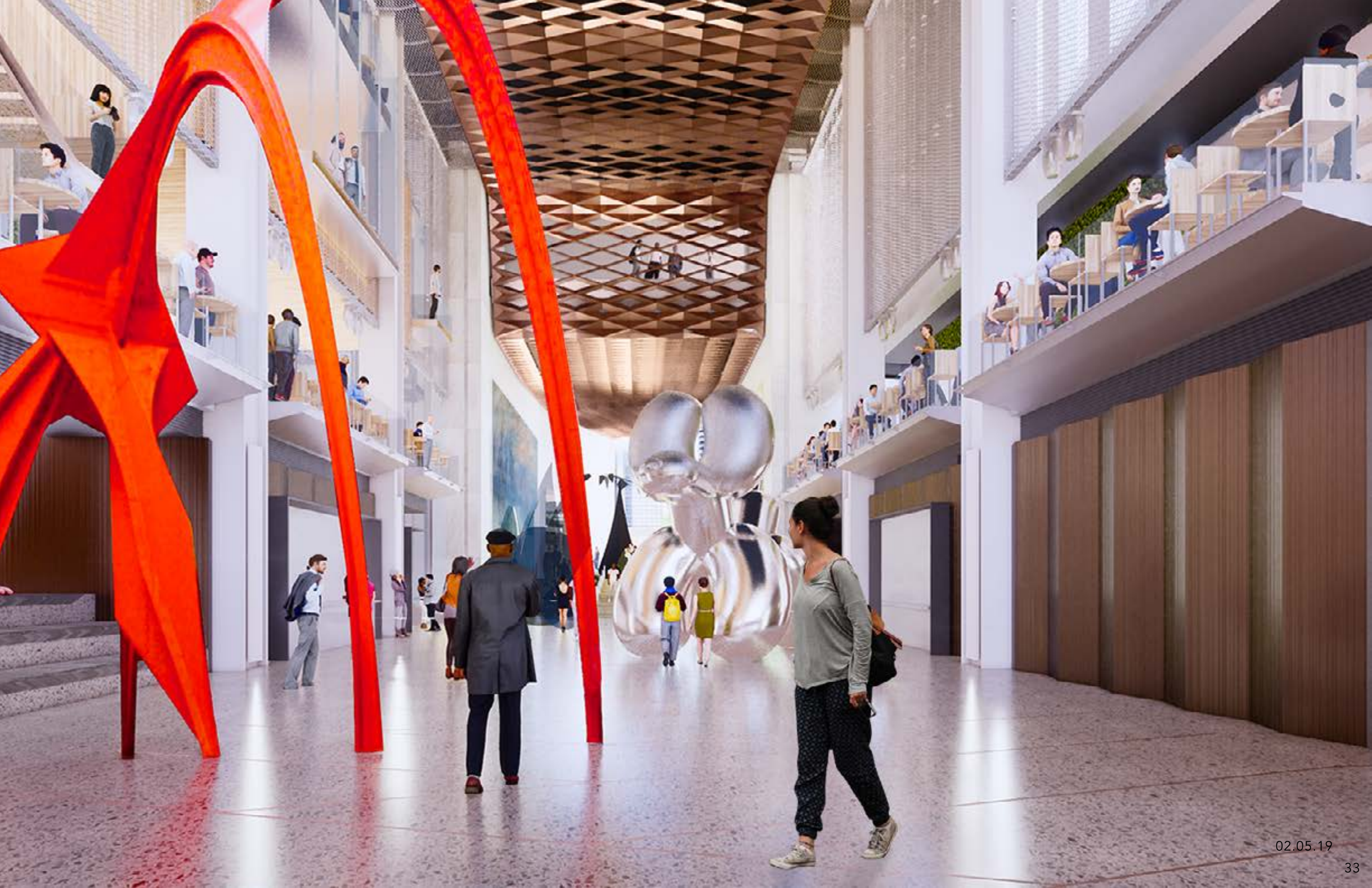


THE CONNECTOR EVENTS
A MULTI-PURPOSE PUBLIC SPACE





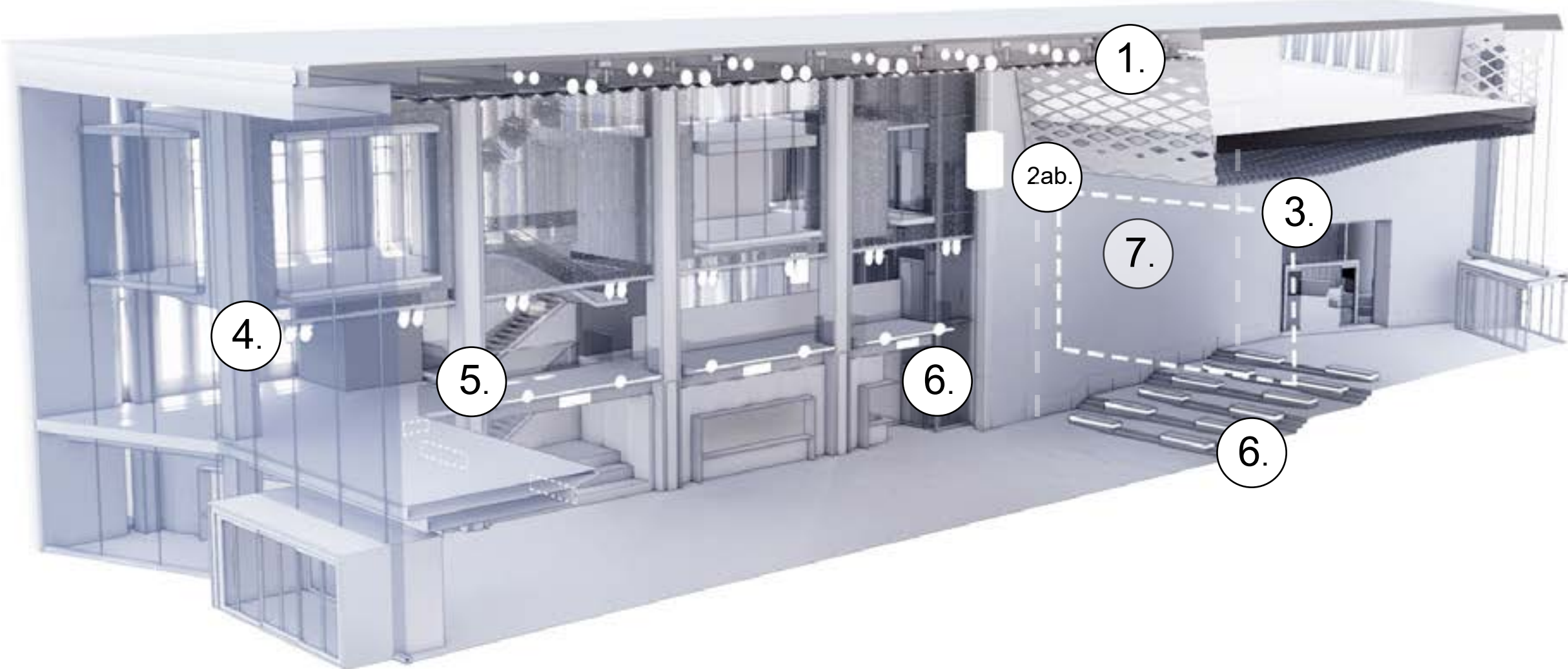




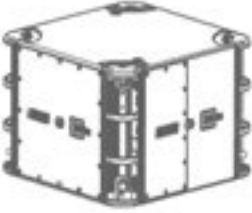




THE CONNECTOR EQUIPMENT
A MULTI-PURPOSE PUBLIC SPACE



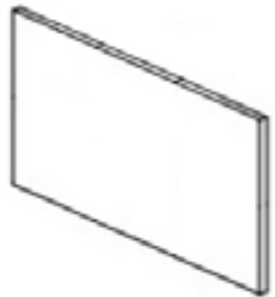
1. (28) Electric Chain Motors



2a. (2) Main Loudspeakers



2b. (2) Secondary speakers



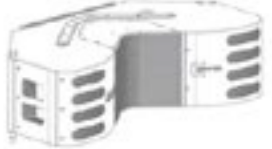
3. (1) Drop down LED screen



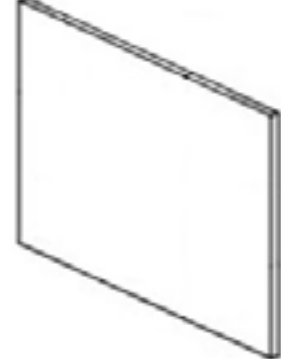
4. (25) Colored 'Animotion' LEDs



5. (25) Color Wash LEDs



6. (2) Recessed speakers



7. (2) Media Walls

WSQ

L A N D S C A P E

CLAIMING SPACE FOR PEDESTRIANS

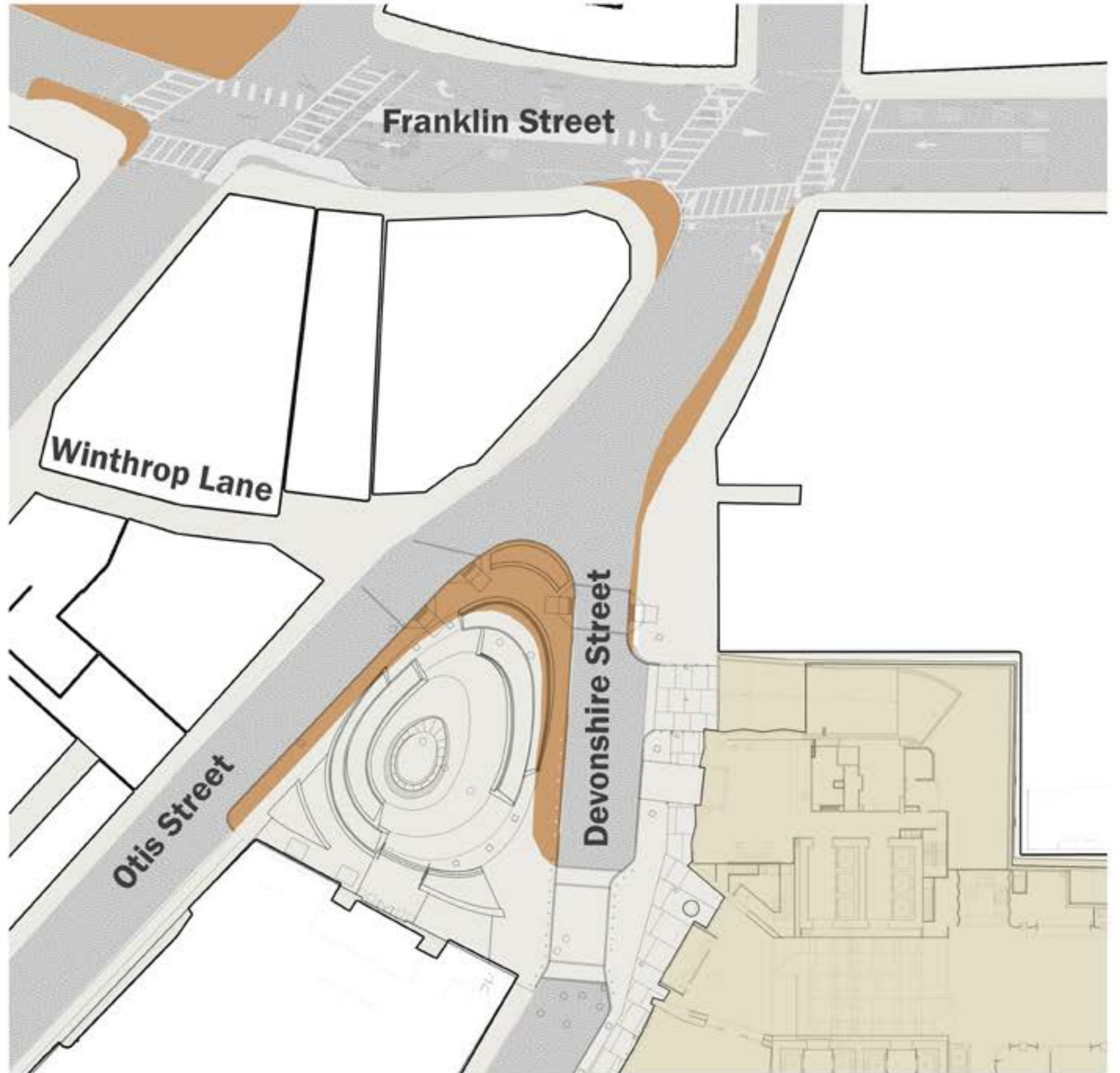
SHOPPERS PARK



TONTINE CRESCENT



CLAIMING SPACE FOR PEDESTRIANS



GREENING THE DOWNTOWN



THE RIPPLE

A ripple, the pattern created by a raindrop hitting a body of water, is the concept for this scheme. An active and dynamic pool of water is the pulse of this plaza. It will be designed to create visual and acoustical interest throughout the day and throughout the year. The sound of moving water will echo across the square. Change in elevation is achieved through subtly tilting the plane of the plaza. The shape of the pool undulates outward, repeating the rippled form in the paving. The ground plane emerges at varying levels to frame planting beds and create seating. Lighting will be used to highlight the walls and paths. These nested linear elements create an elegant and contemplative atmosphere that can be enjoyed by individuals or groups of people.

Flowering understory trees frame the central plaza while large canopy trees provide an edge. Ripples will be repeated within the planting beds through the color and height of the groundcover.



FORMATION

AXIS



FORMATION

OVAL CENTROIDS AT INTERSECTION
OF ALL THREE AXIS



FORMATION

OVAL CENTROIDS SLIDE TO WEST,
STILL SQUARE TO 1 WSQ FACADE



FORMATION
FRAGMENTS OF FLOWERING TREES
INSIDE THE TALL RING



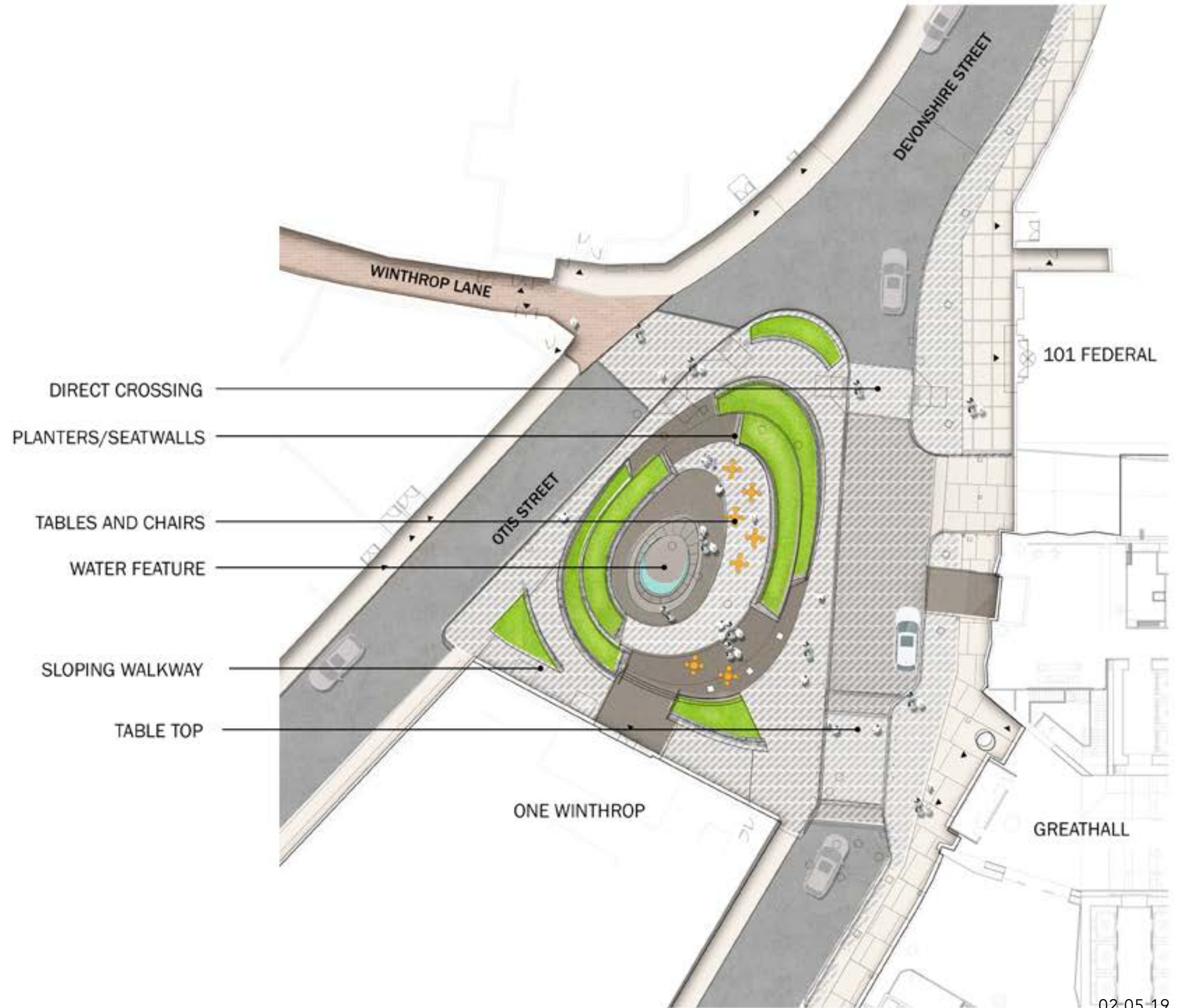
FORMATION
LANDSCAPE FORMS "SPIN-OFF" AS
CURVALINEAR FRAGMENTS



LANDSCAPE PLAN

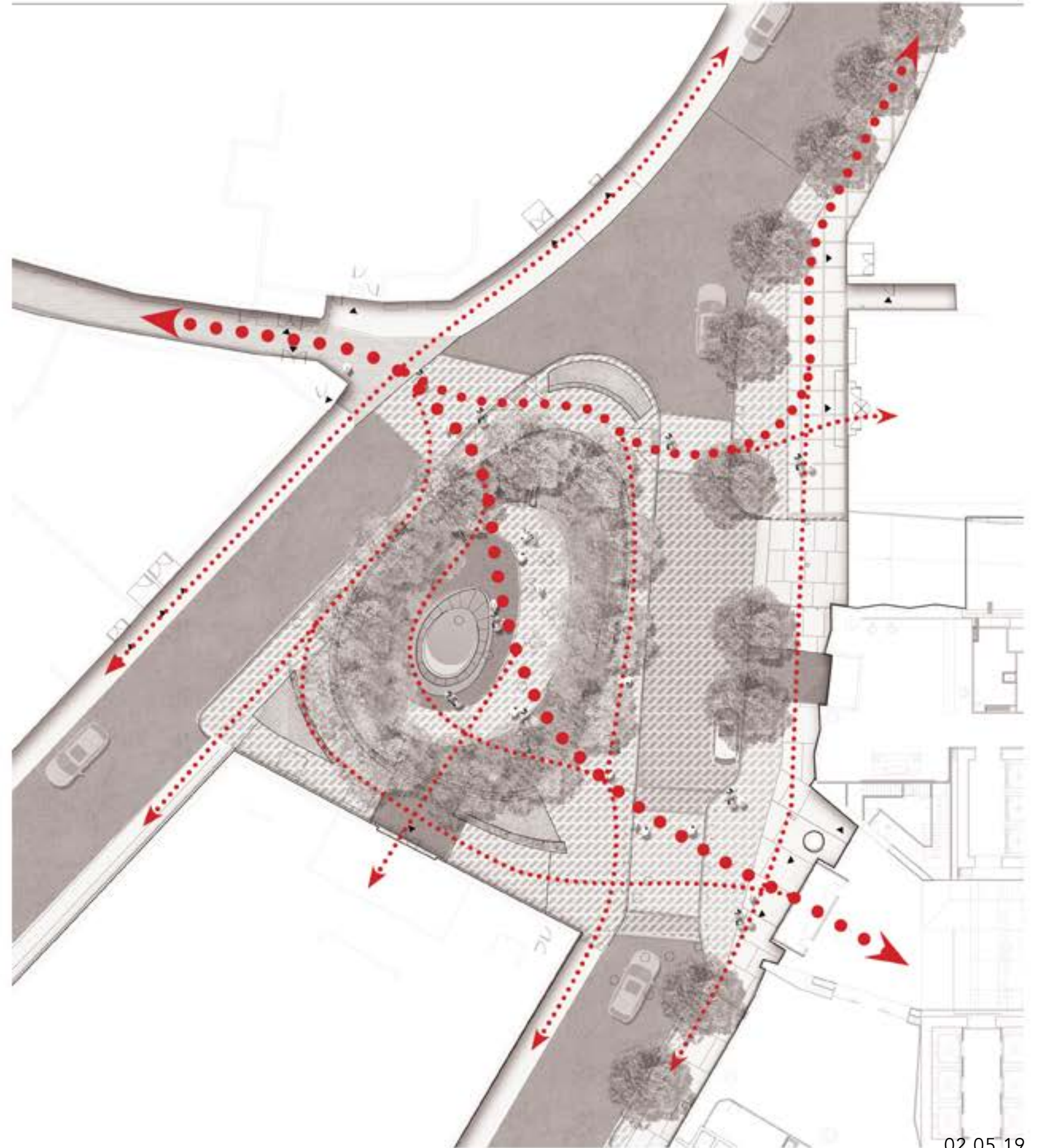


115 WINTHROP SQUARE
LANDSCAPE PLAN



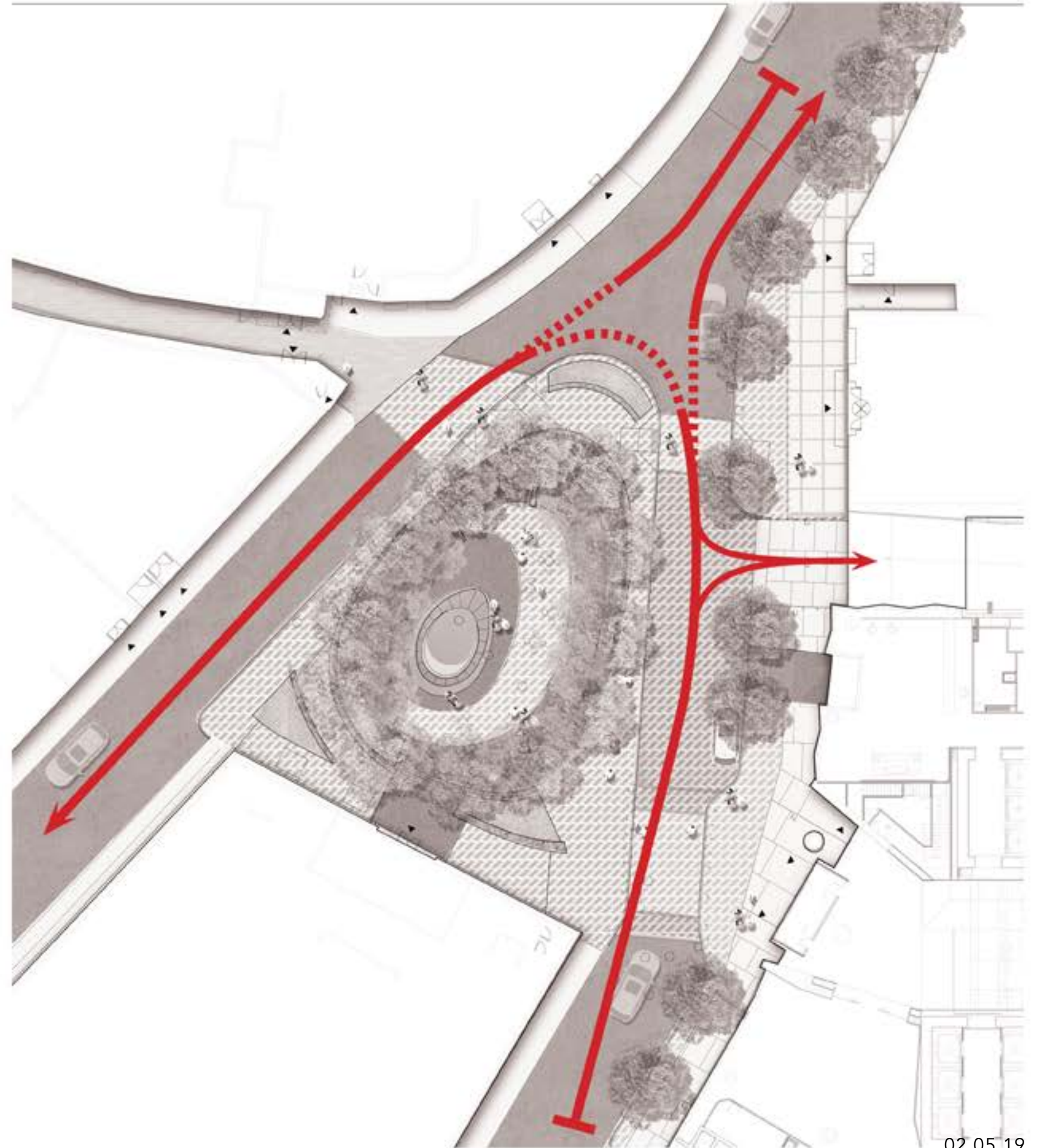
CIRCULATION IN THE SQUARE

PEDESTRIAN



CIRCULATION IN THE SQUARE

VEHICULAR





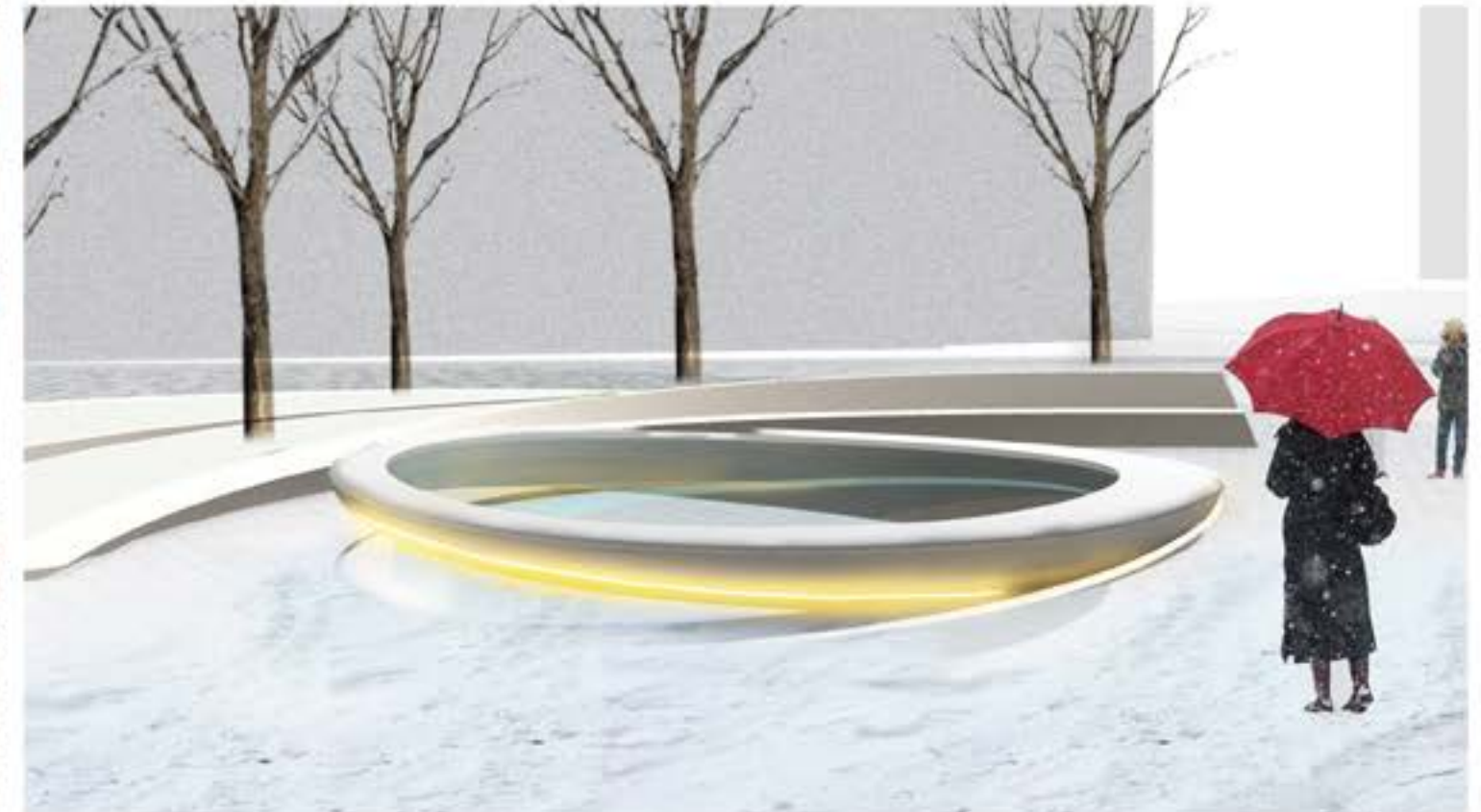




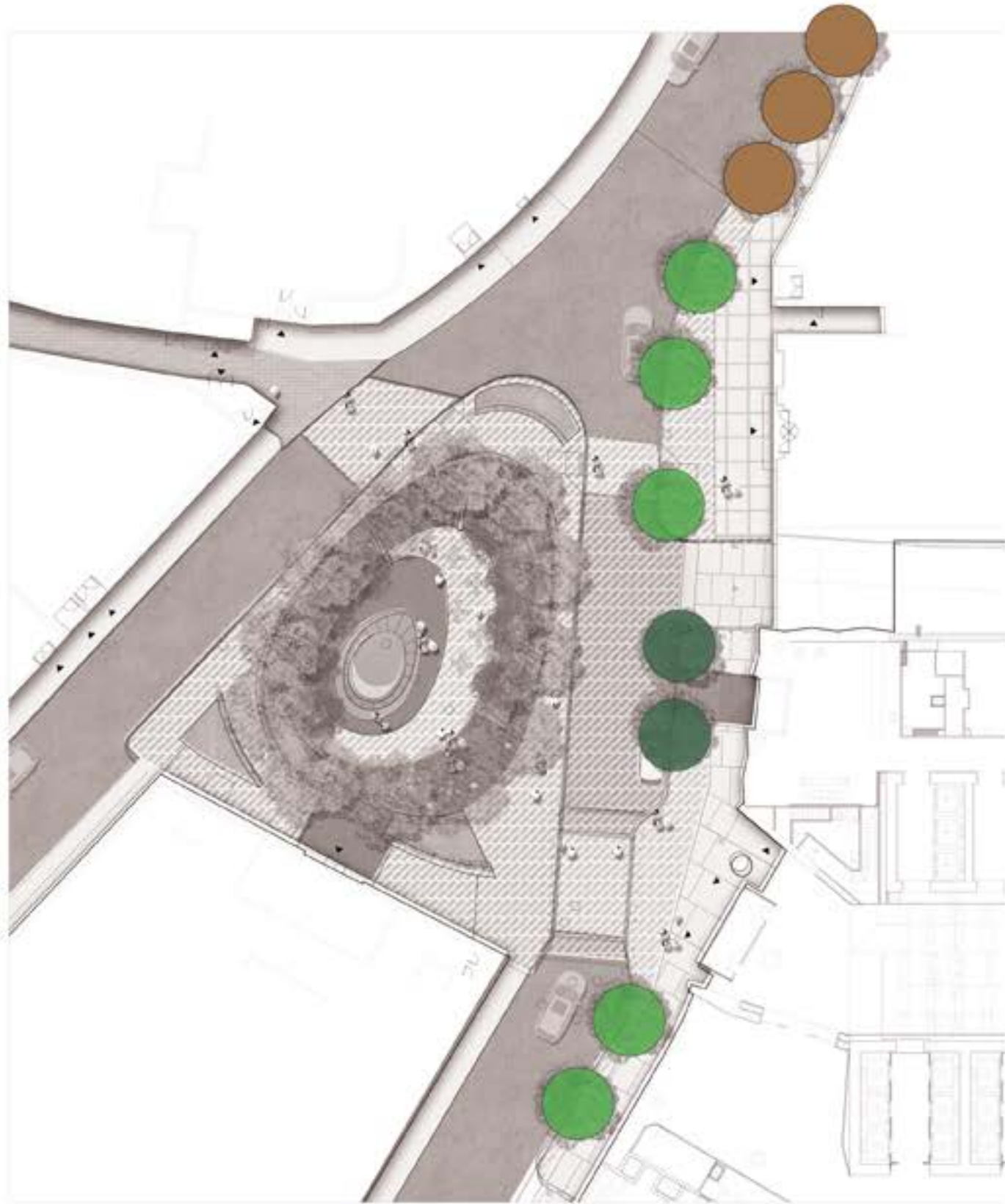




WATER FEATURE- SEASONS



DEVONSHIRE STREET TREES




WHITE OAK


Quercus alba

 True deciduous (leaf losing)

COLUMNAR WHITE OAK

Quercus alba fastigiata

 Marcescent (leaf retaining)

 True deciduous (leaf losing)



CANOPY TREES



LONDON PLANETREE 'EXCLAMATION!'
Platanus acerifolia



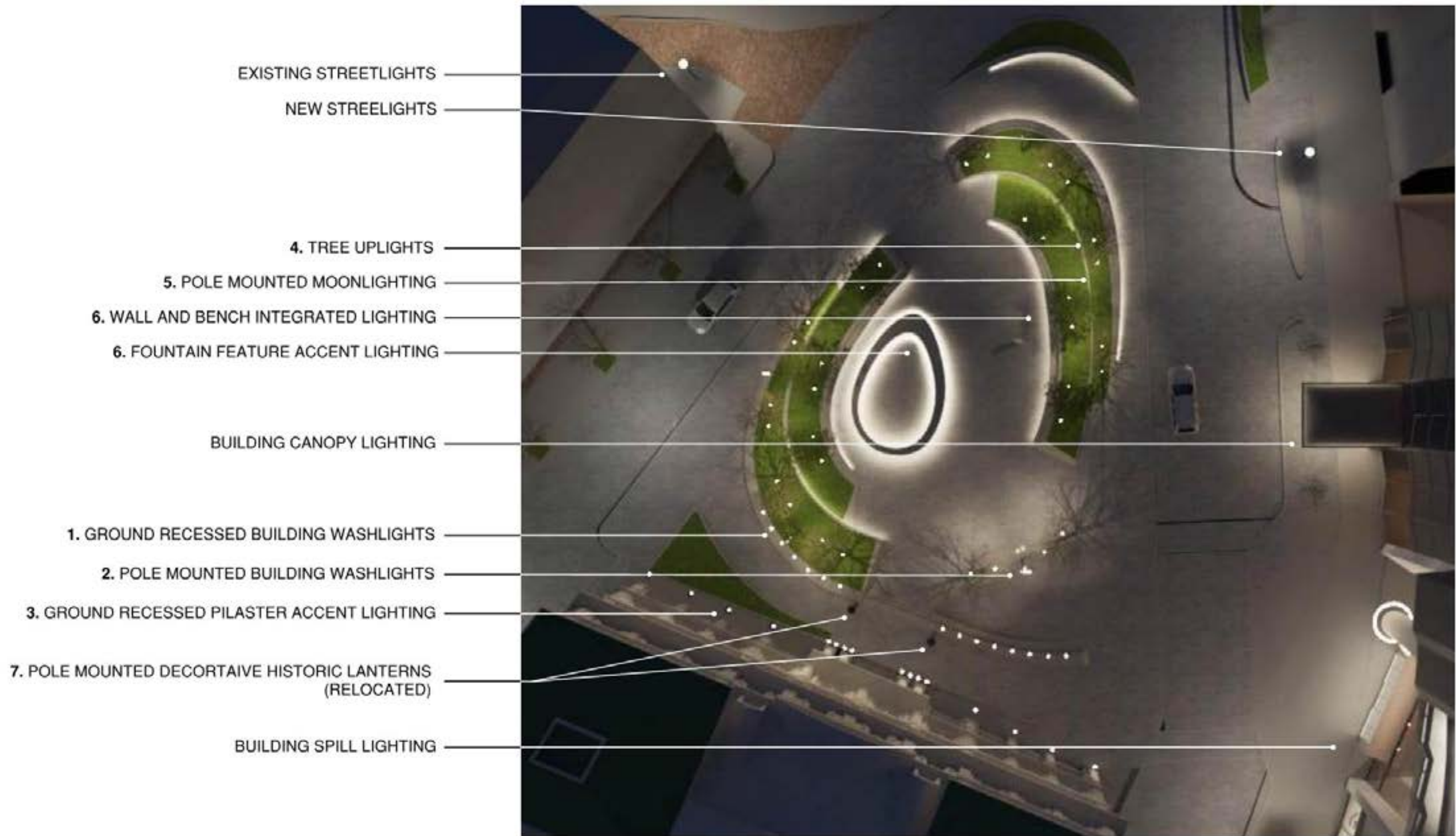
RED MAPLE
Acer rubrum



FLOWERING UNDERSTORY



SERVICEBERRY 'AUTUMN BRILLIANCE'
Amelanchier canadensis



Diagramming Layers of Light











Photometrically Accurate Illuminance Study

Falsecolor rendering shows horizontal footcandle levels at ground plane

All light sources utilize light loss factors to represent maintained light levels

