



# BCDC MEETING #1

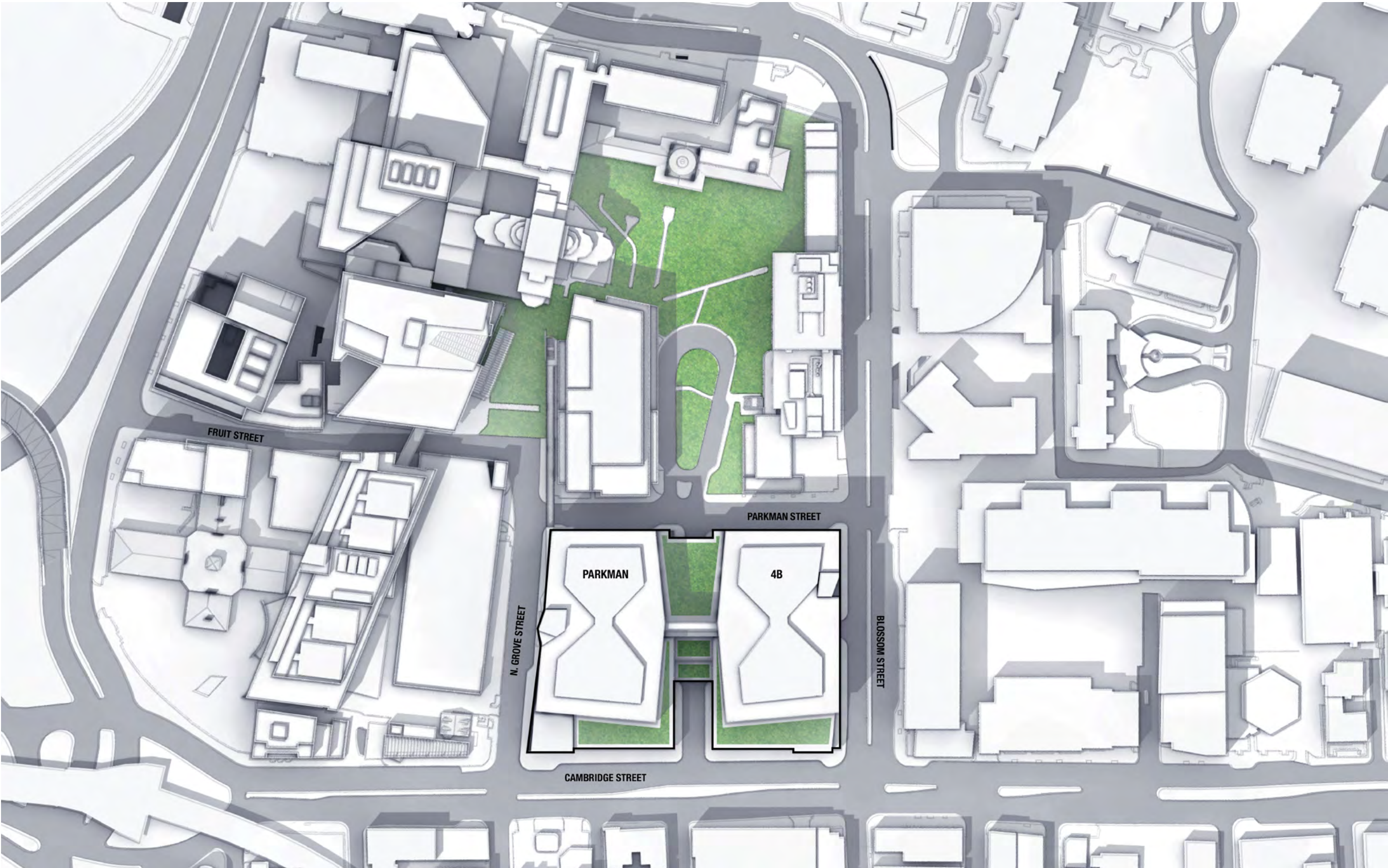
MGH CAMBRIDGE STREET PROJECT | JULY 02, 2019

# AGENDA

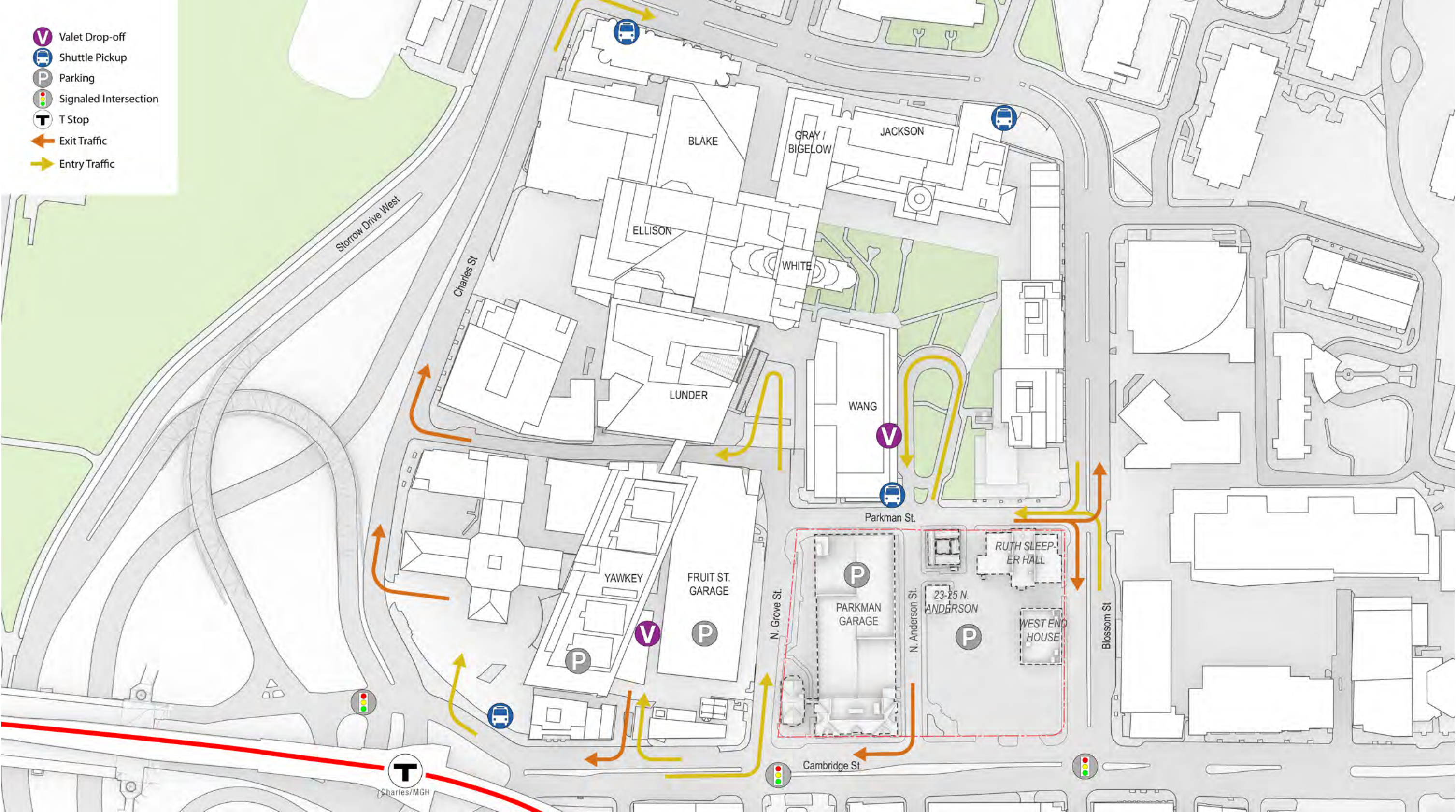
- CAMPUS CONCEPTS / URBAN LEGIBILITY
- BUILDING PROGRAM
- MASSING
- BRIDGES / CAMPUS CONNECTIONS

CAMPUS CONCEPTS / URBAN LEGIBILITY

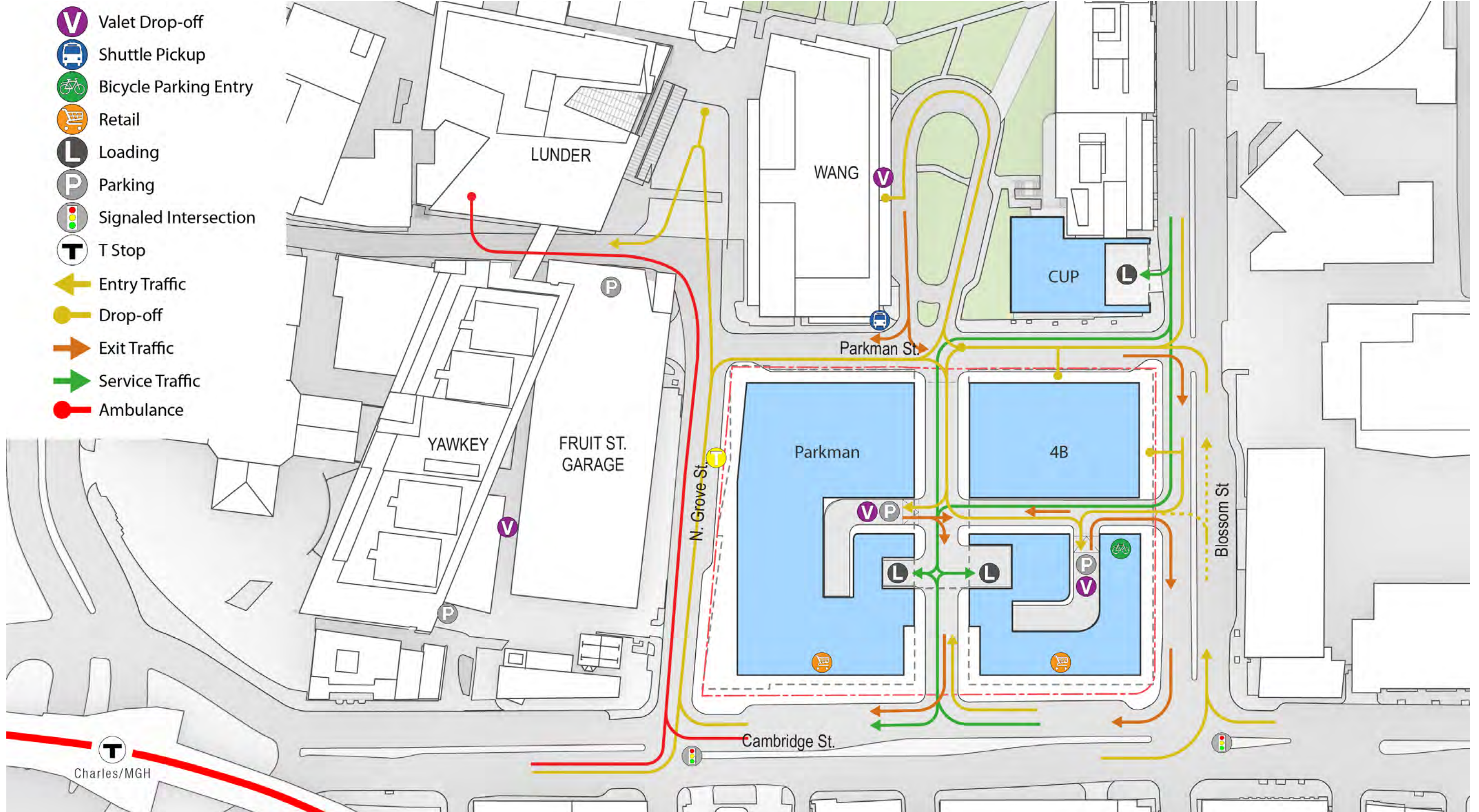
# MASTERPLAN



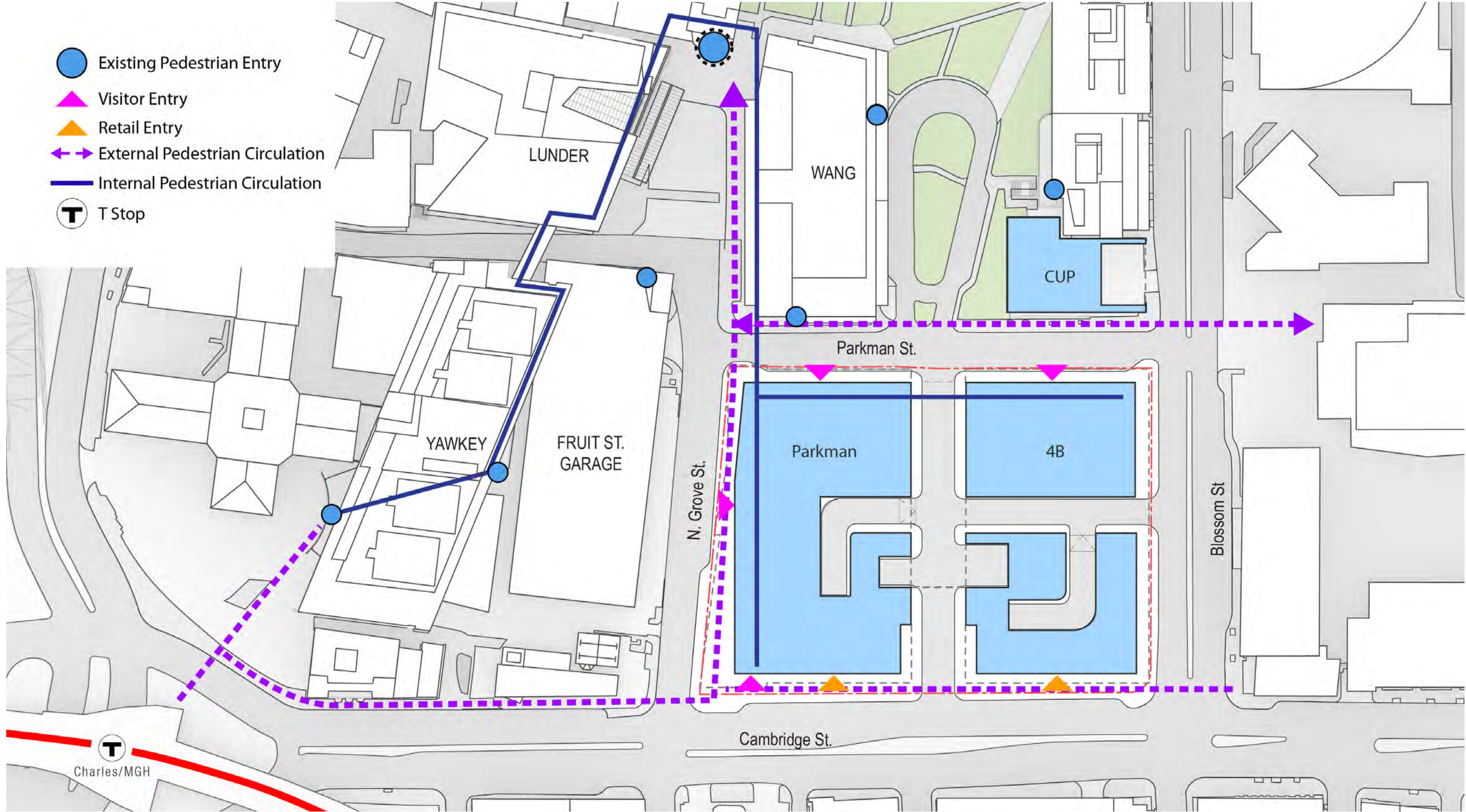
# CURRENT VEHICULAR CIRCULATION



# PROPOSED VEHICULAR CIRCULATION

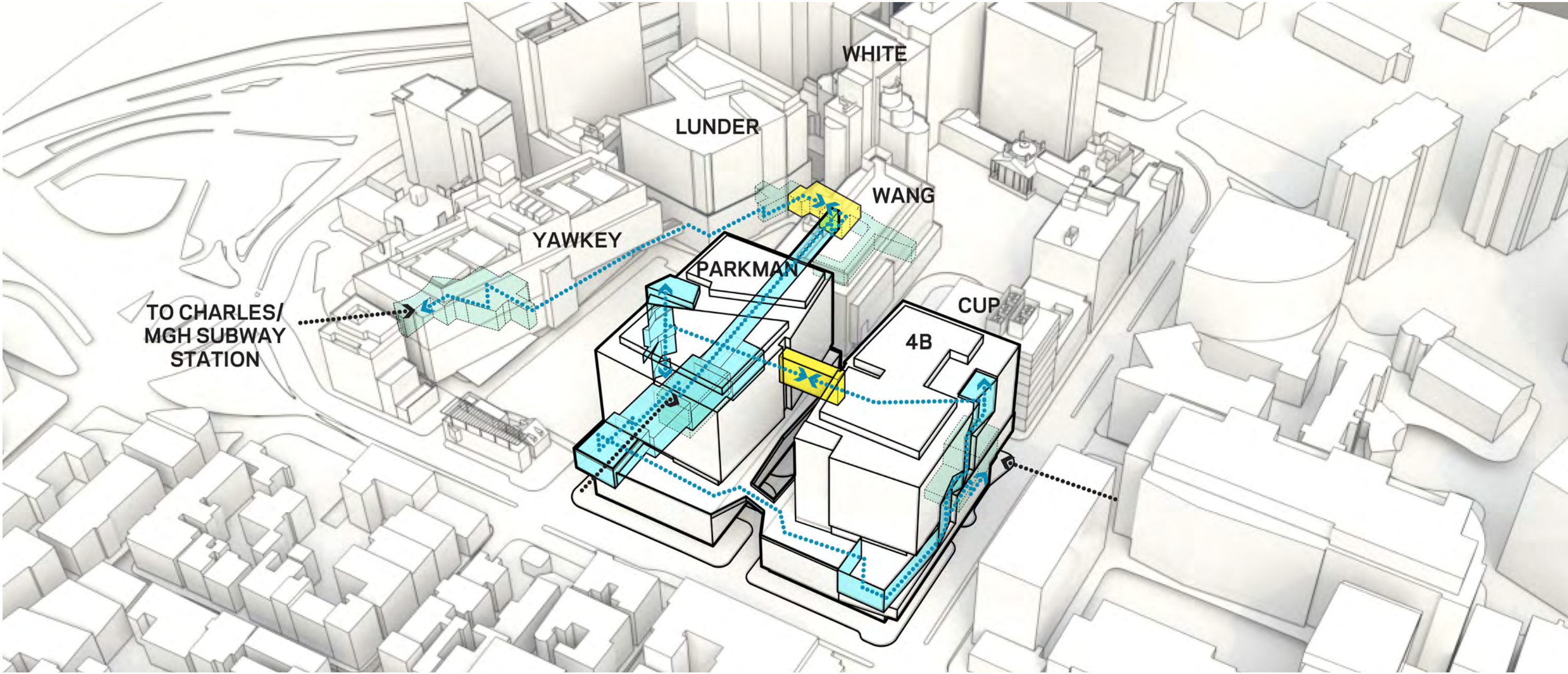


# PEDESTRIAN CIRCULATION



# MGH CSP - BUILDING VISION CONCEPTS - HEALING ECOSYSTEM

Connectedness / Collaboration - Building as a hub for the MGH campus, community, national and international health systems.





# BUILDING PROGRAM

Building as a Temple for Healing -  
*"historic statement of what is important in our age."*  
Dr. Peter Slavin

# MGH CSP - BUILDING VISION CONCEPTS - HEALING AMENITIES AS CATALYST FOR CHANGE

- . Living Lab - living experiment for new models of care, operations, experience.
- . Enable and leverage innovation.
- . Place of healing, restoration and wellness - Therapeutic to Mind, Body & Spirit.
- . Address Physician and Staff burn-out with places of respite and supportive programs.
- . Differentiate MGH from its peers locally and internationally.

*Information gathered from Leadership Interviews, Innovation Forum, Operational Meetings and Guiding Principles.*



# HEALING AMENITIES

- Healing Garden(s)
- Family Waiting / Respite
- Staff Support
- Staff Lounge
- Staff Support Center
- Reception / Security
- Centralized Physician Space

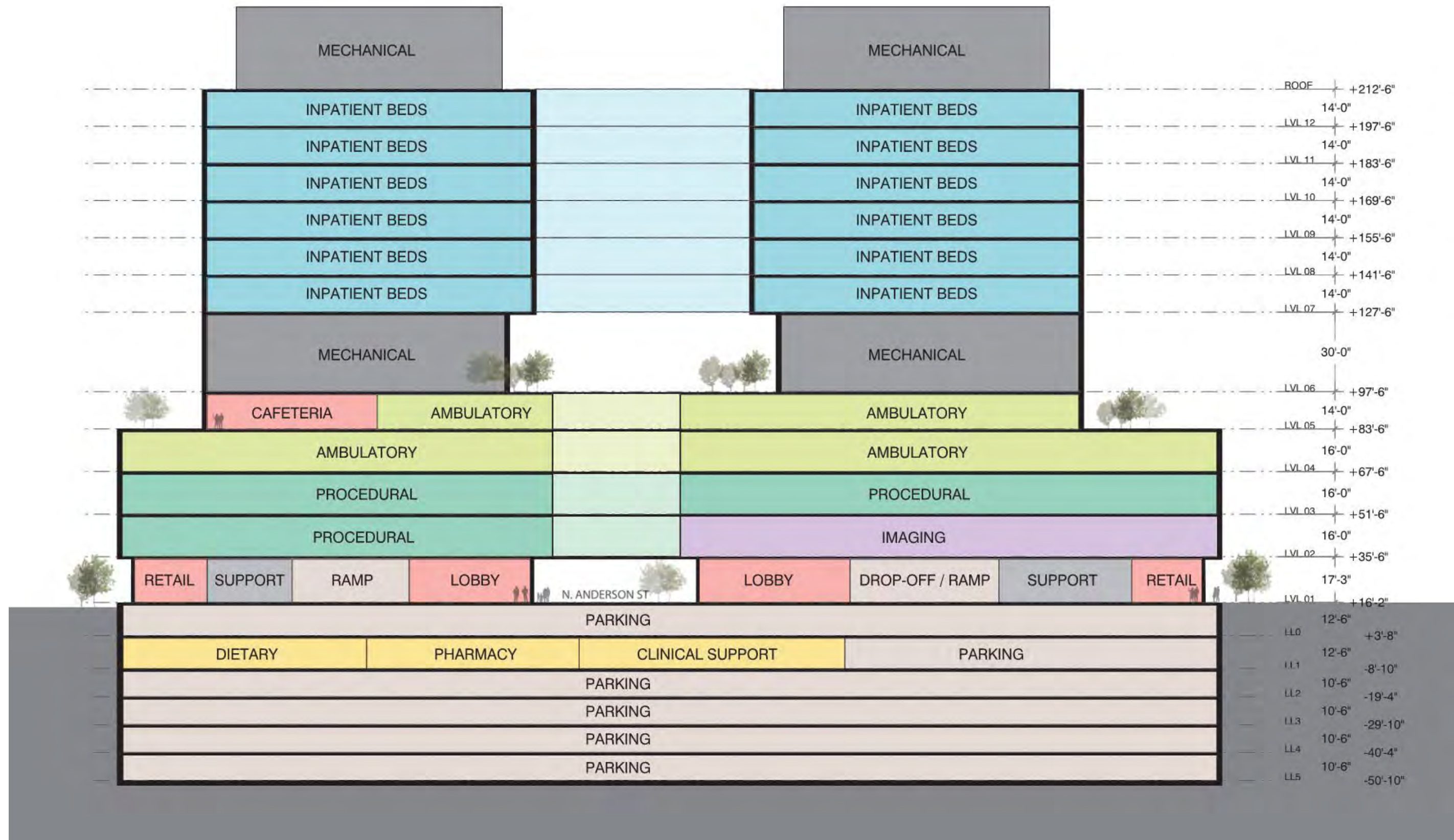
- Wellness Center
  - Fitness Ctr.
  - Meditation
  - Yoga
- Spiritual Chapel
- Supportive Therapies
  - Massage, Aroma Therapy
- Conference Center
- Flexible Event Space
- Food Service
- Retail
- Staff Support Center
- Reception / Security

↑ HEALING VILLAGES

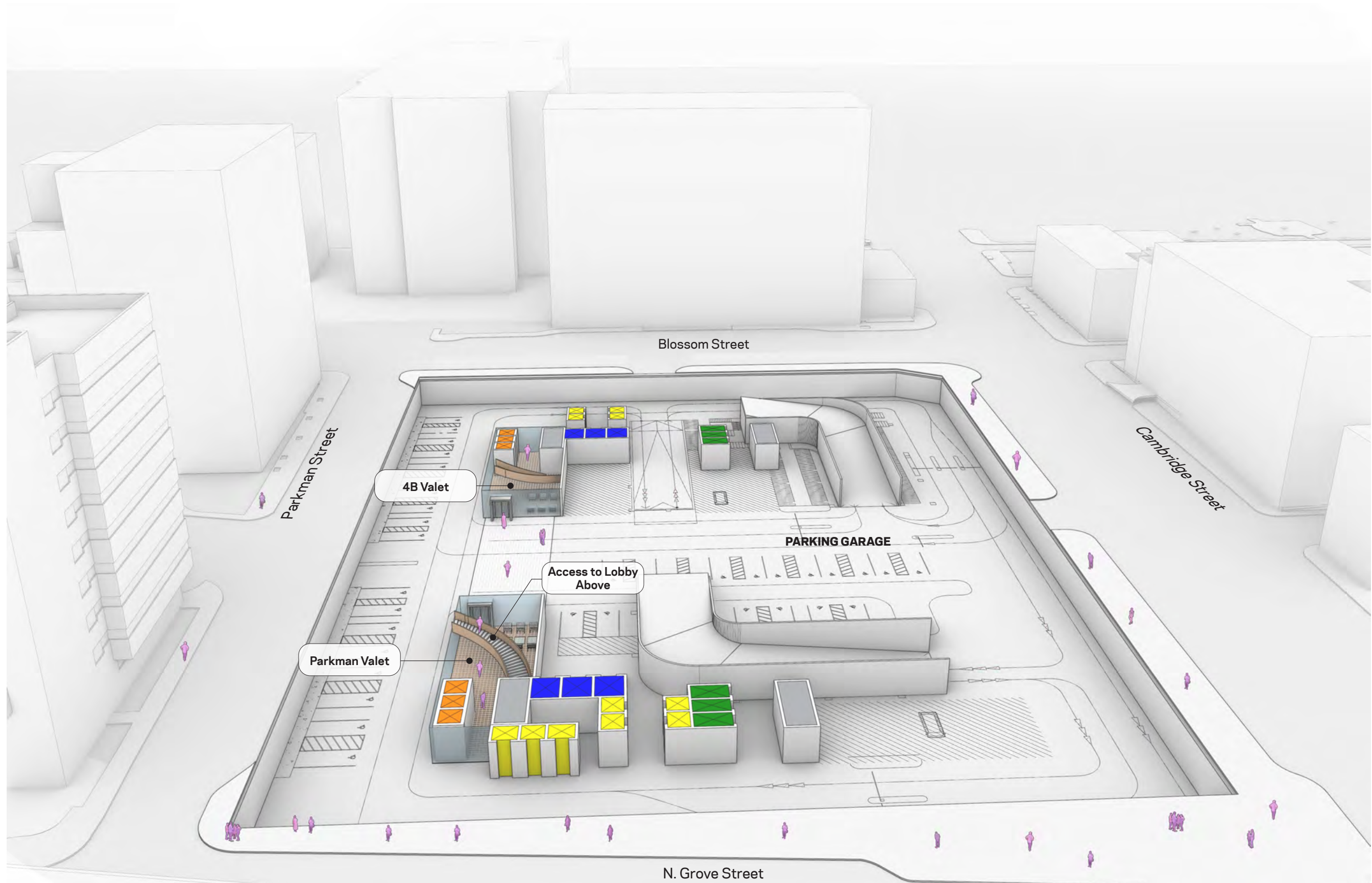
↓ AMENITY EDGE



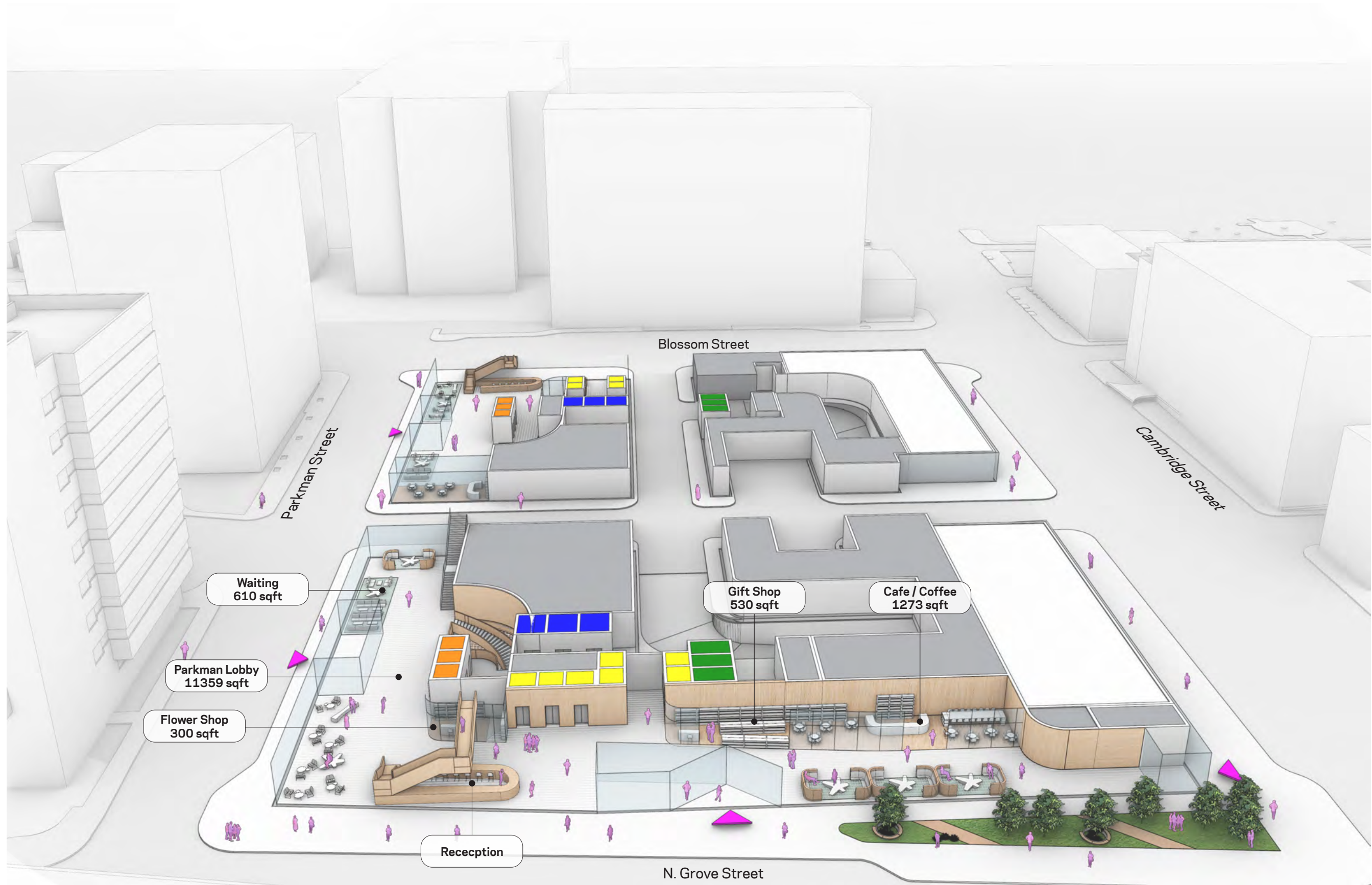
# PROGRAM STACK



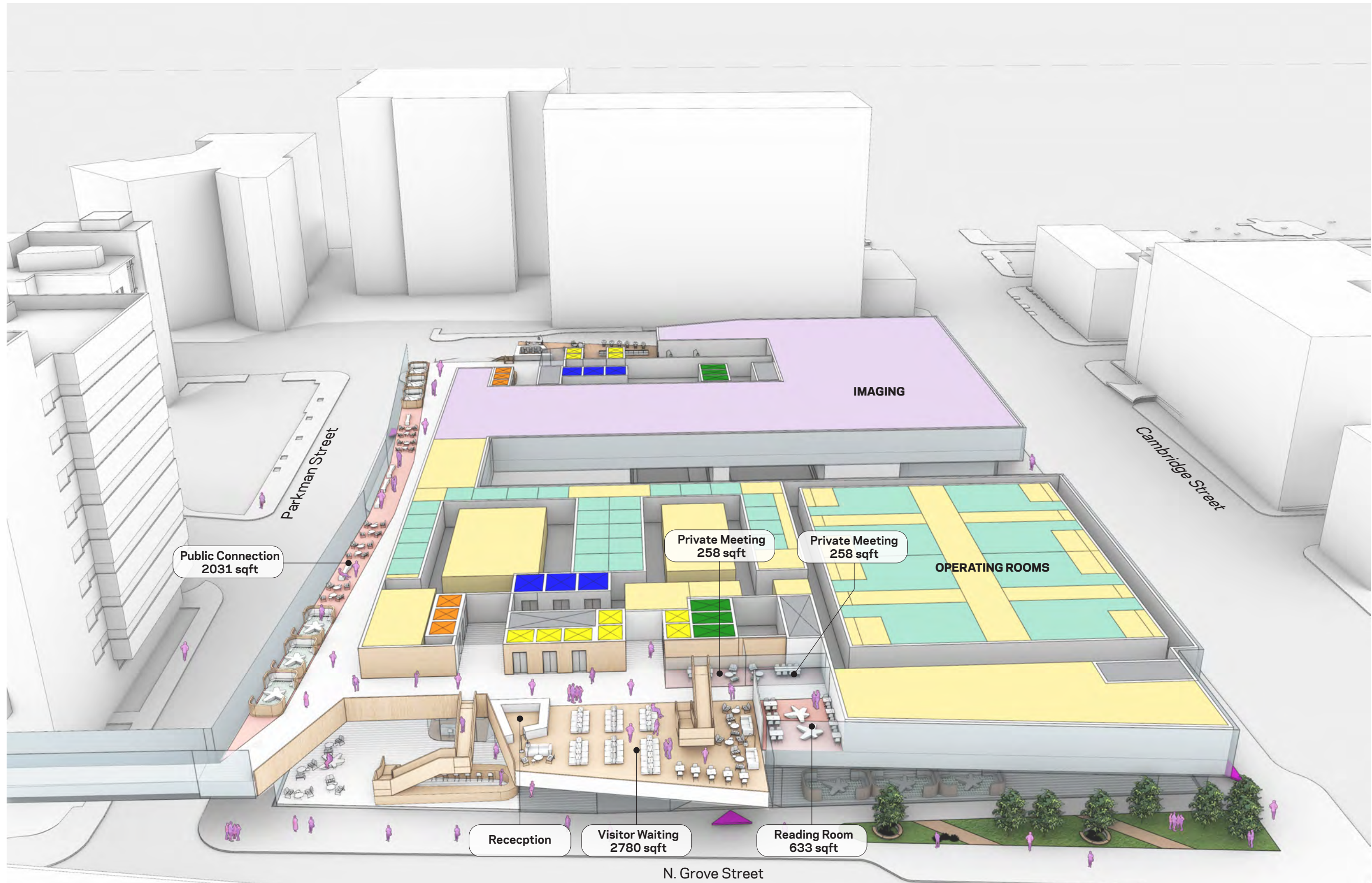
# B1\_PARKMAN - VALET DROP OFF / PARKING



# F1\_PARKMAN

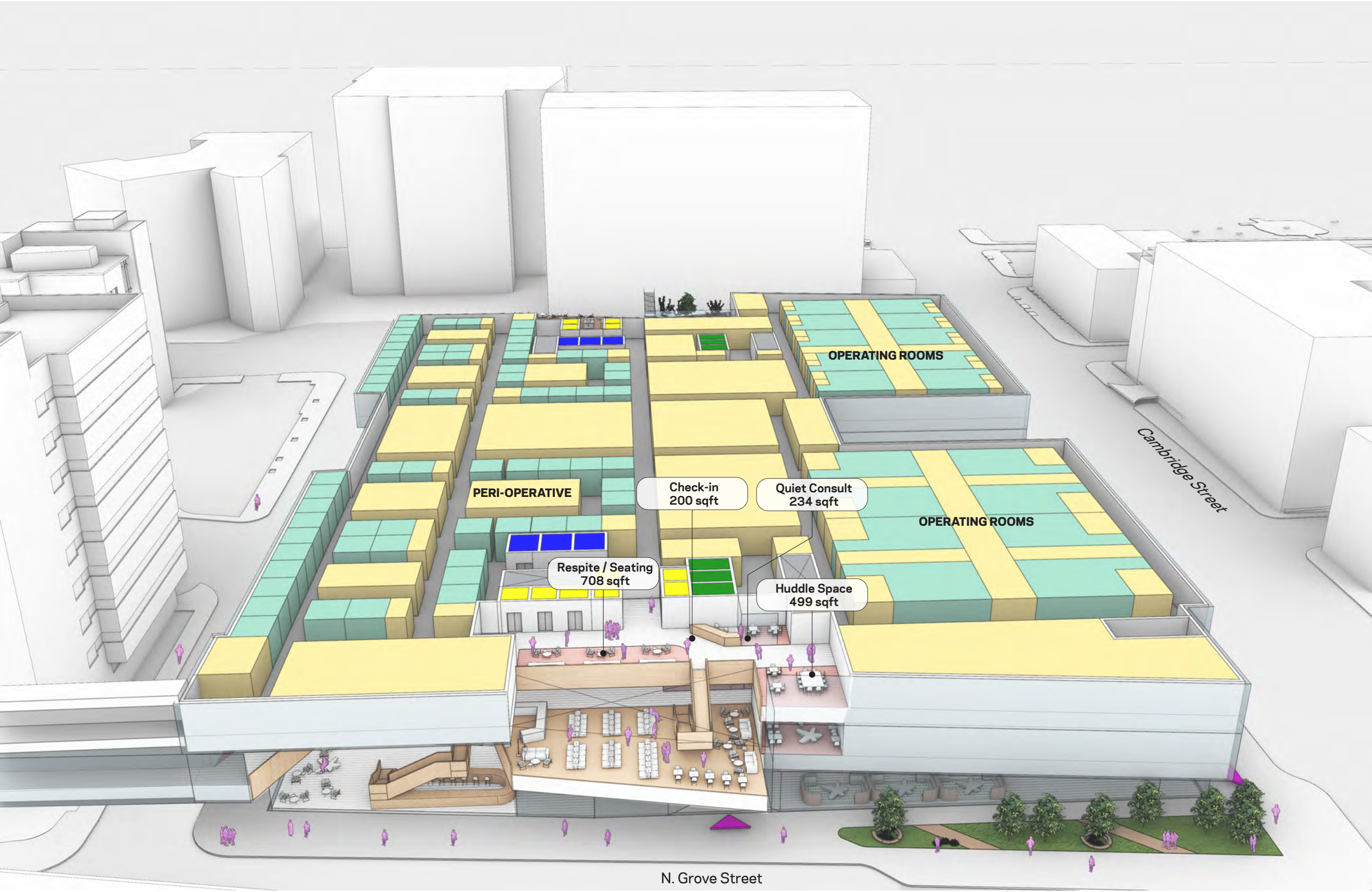


# F2\_PARKMAN





# F3\_PARKMAN



# F4\_PARKMAN



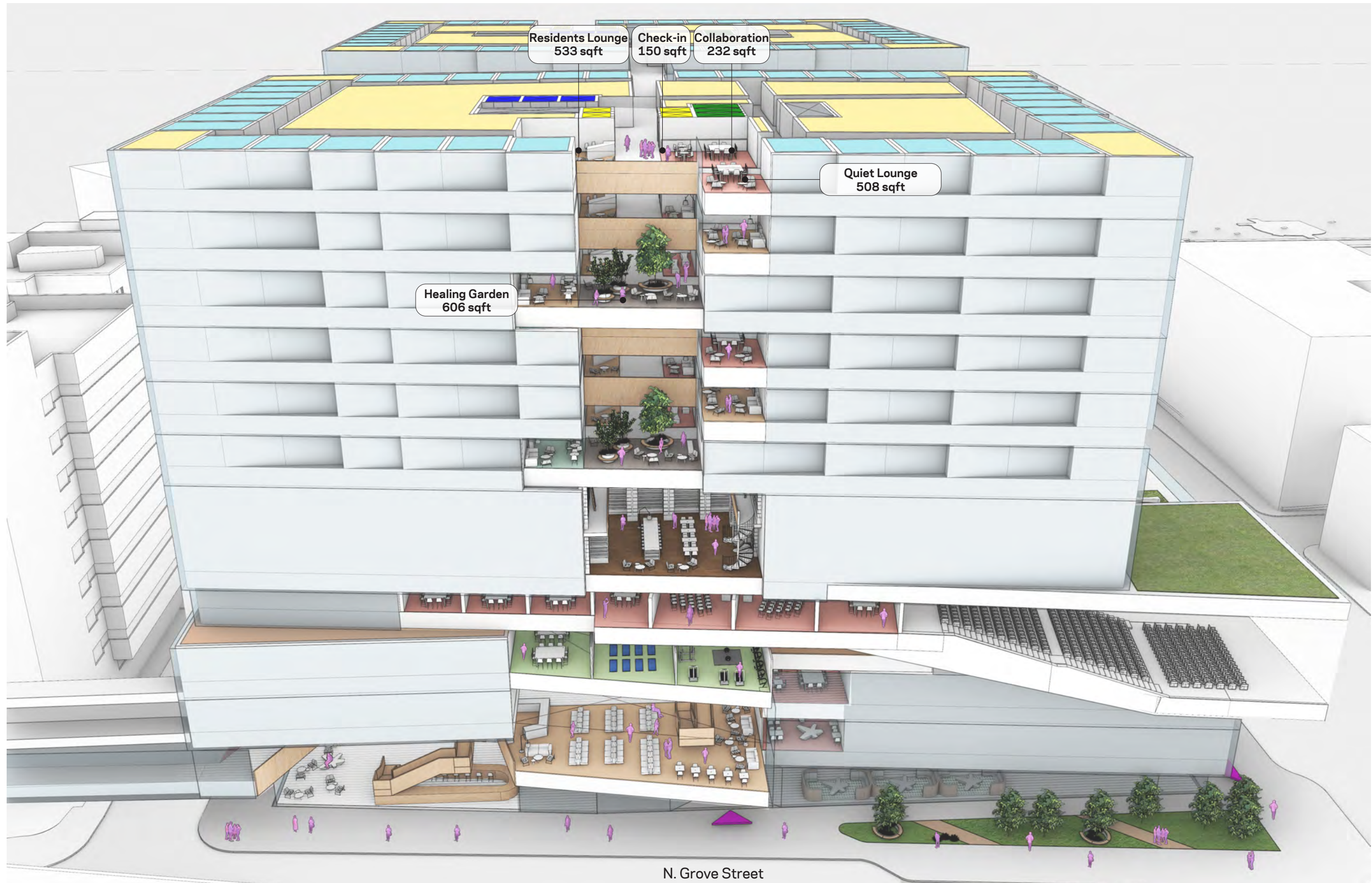
# F5\_PARKMAN



# F7\_PARKMAN - PATIENT FLOORS



# F12\_PARKMAN

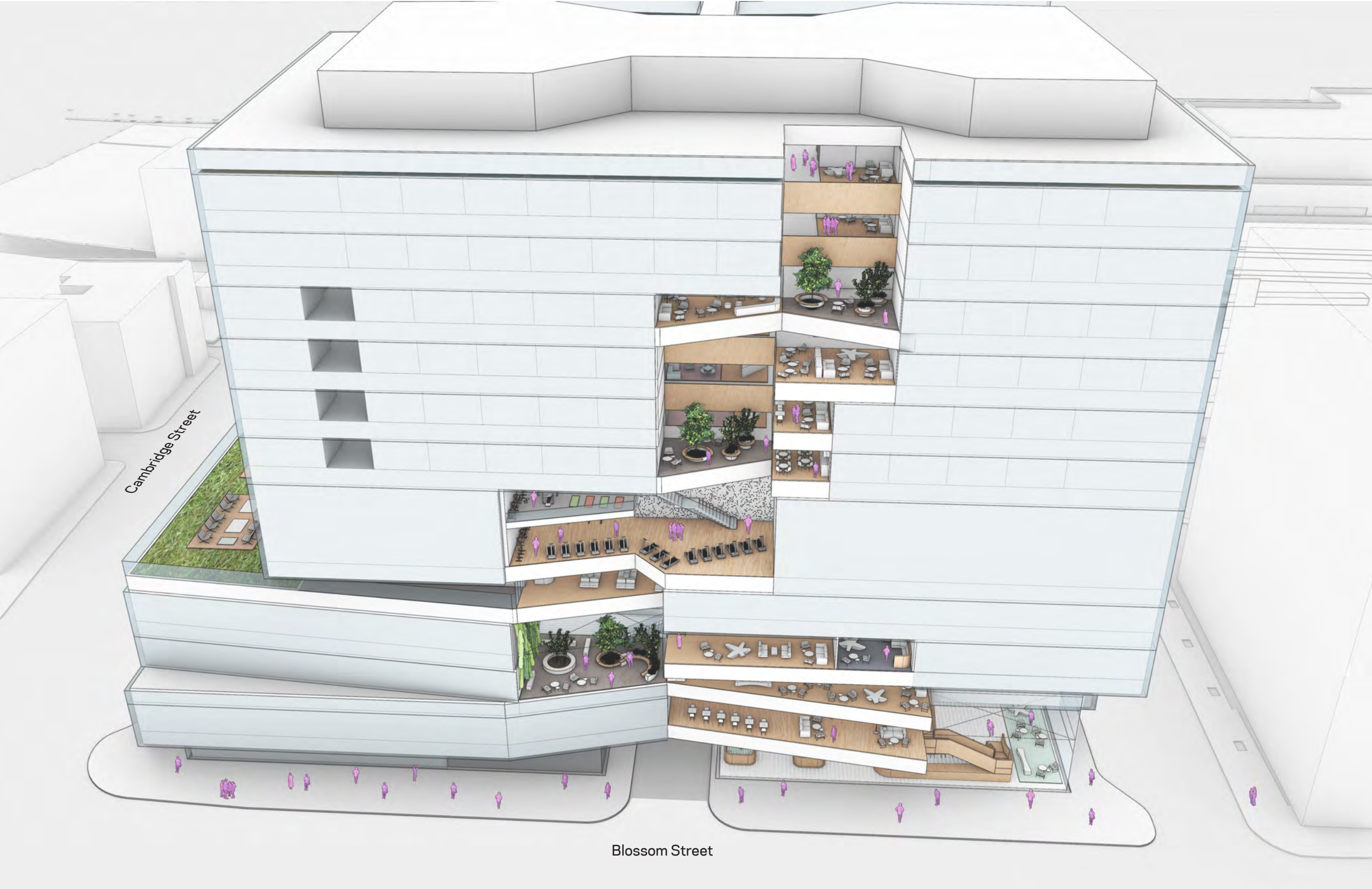


# F13 PH\_PARKMAN



N. Grove Street

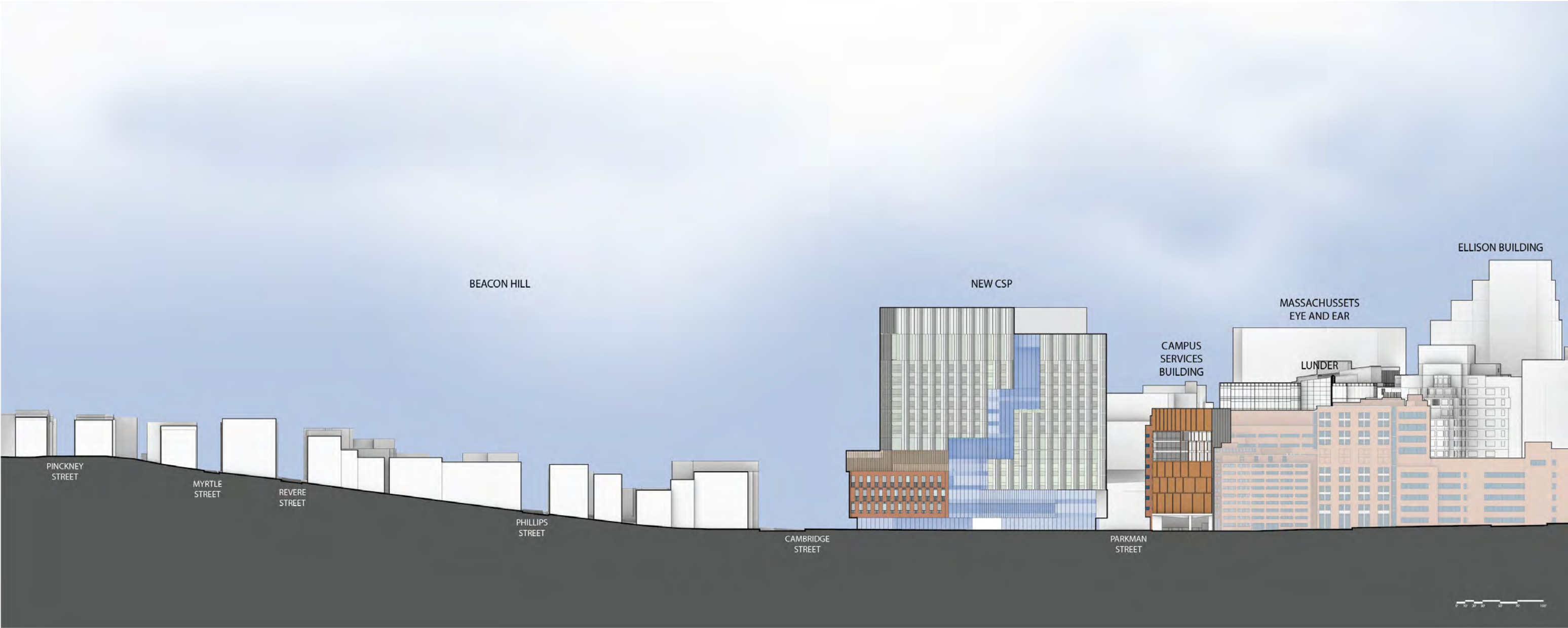
# F13PH\_4B - AMENITY AREAS



MASSING



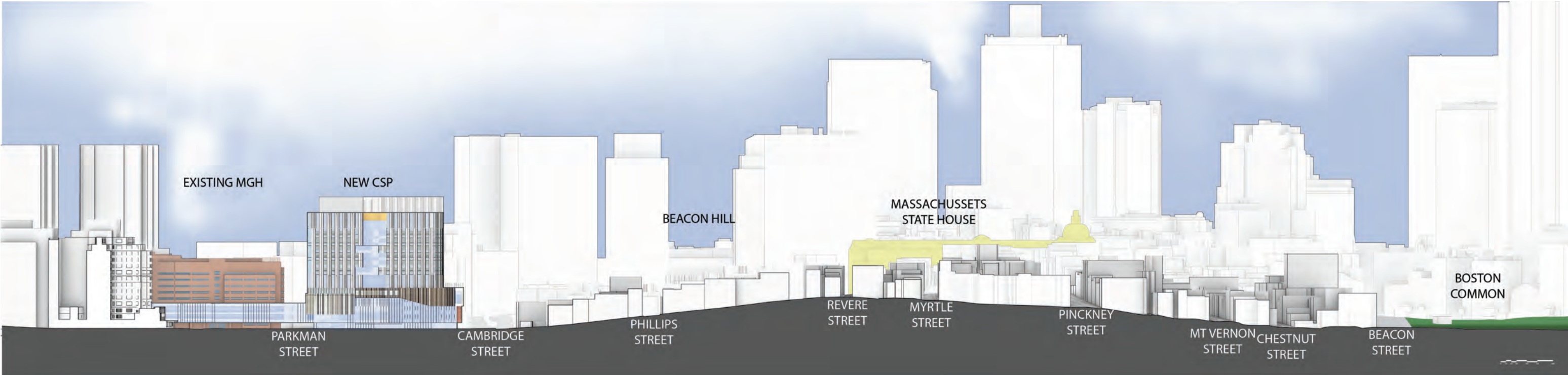
# BEACON HILL SECTION - BLOSSOM STREET



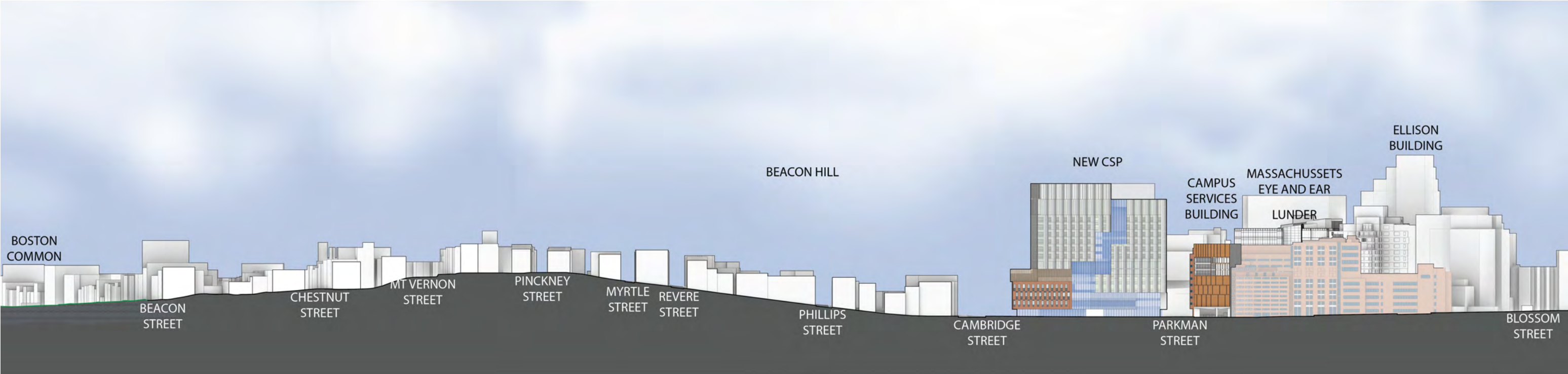
# BEACON HILL SECTION - N GROVE STREET



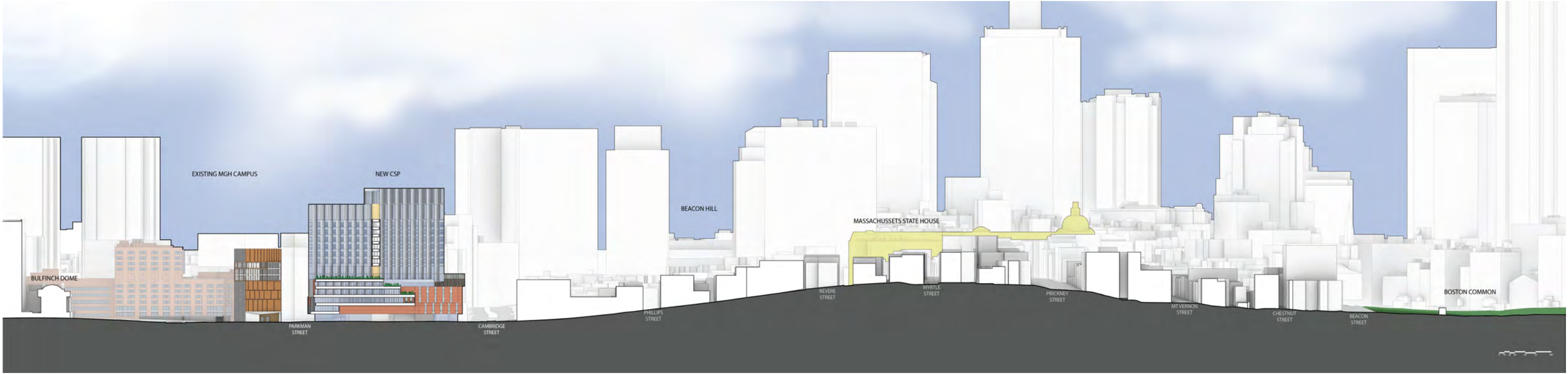
# CITY SECTION - N GROVE STREET



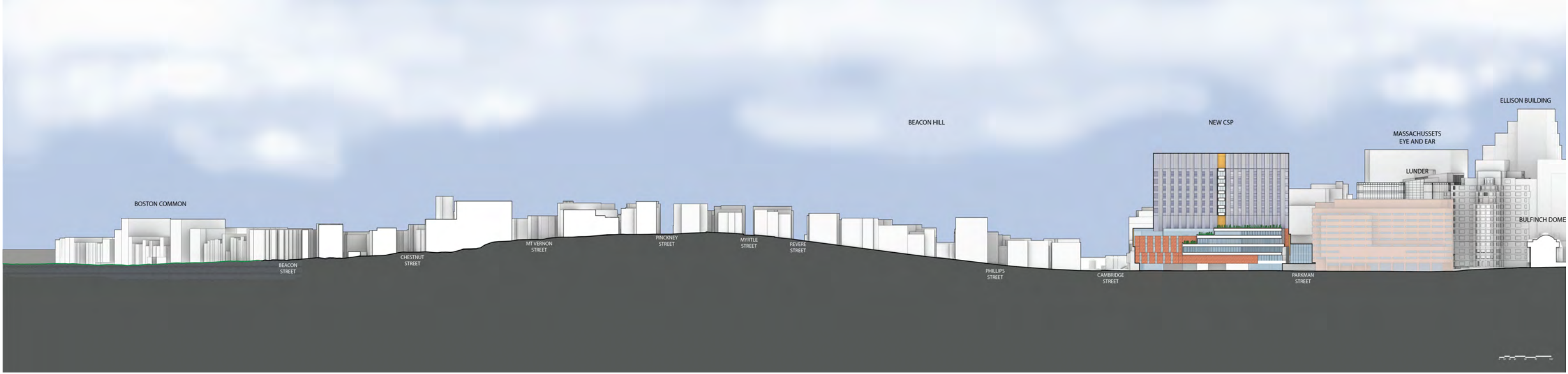
# CITY SECTION - BLOSSOM STREET



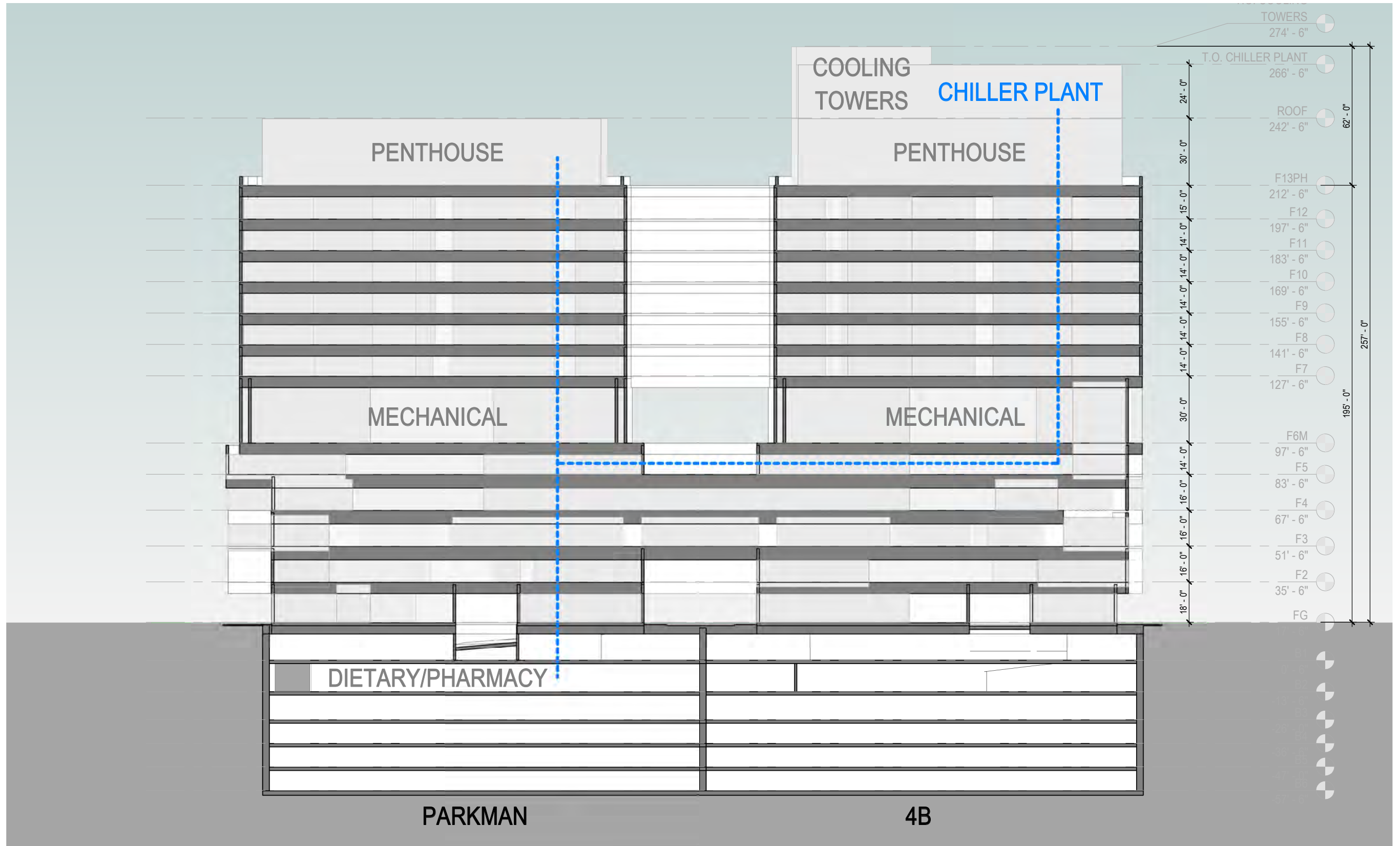
# CITY SECTION - NORTH ANDERSON - LOOKING EAST



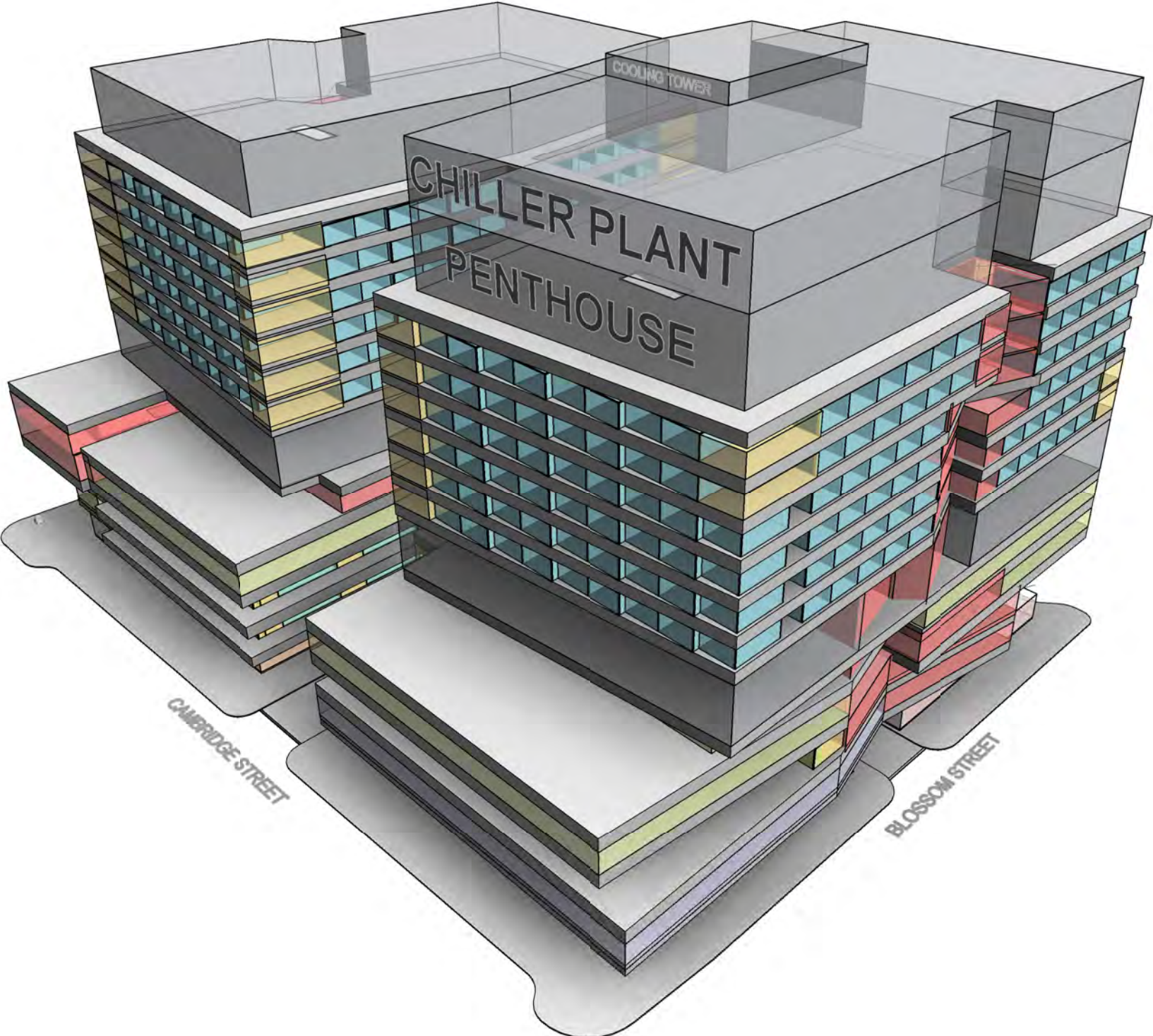
# CITY SECTION - NORTH ANDERSON - LOOKING WEST



# PENTHOUSE MASSING

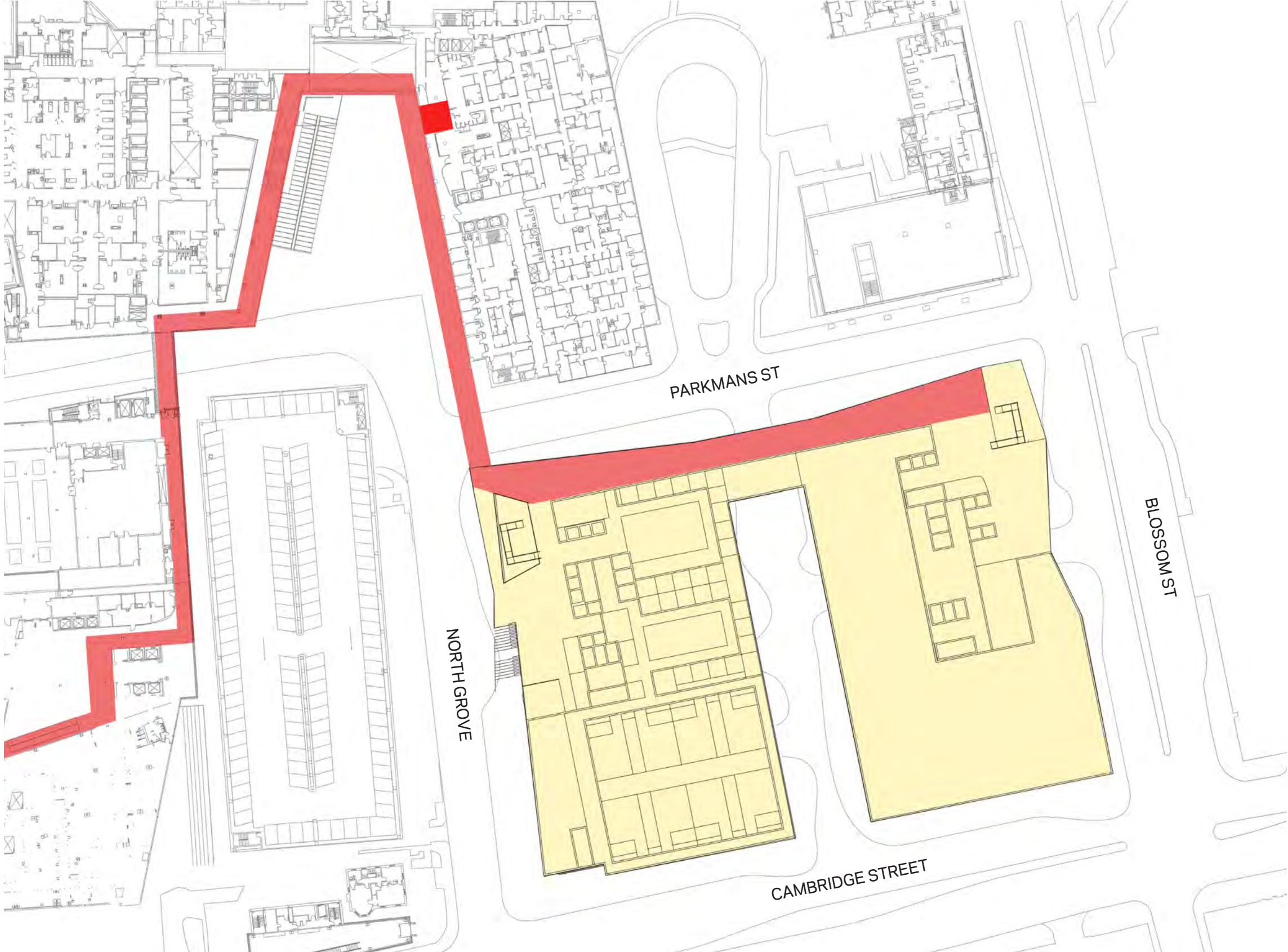


# PENTHOUSE MASSING



BRIDGES / CAMPUS CONNECTION

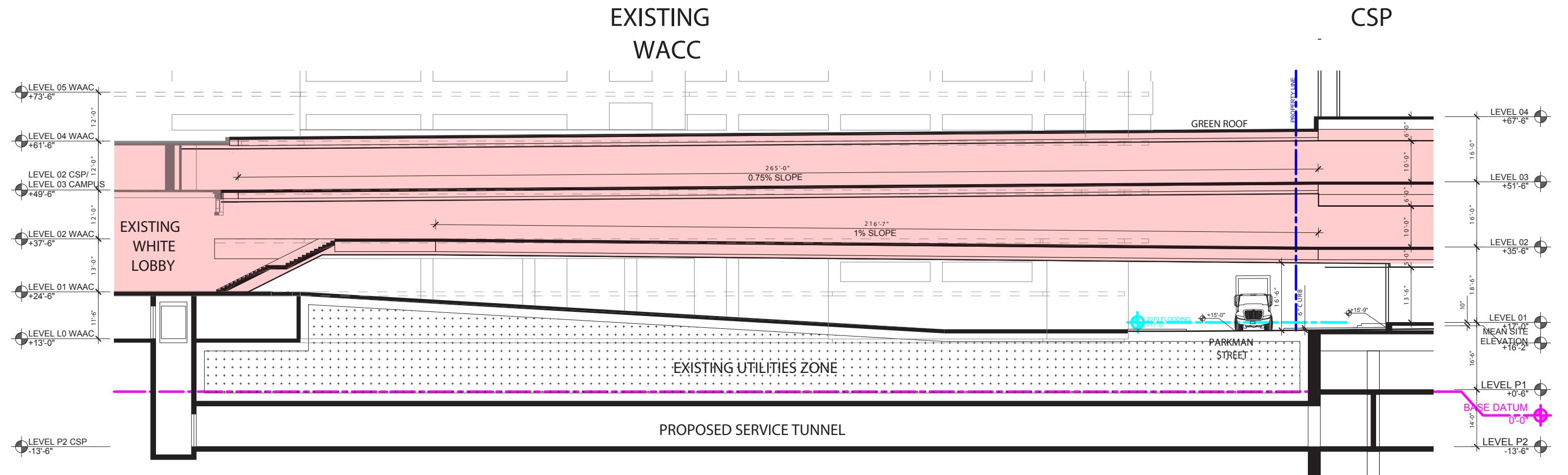
# BRIDGE CONNECTION PLAN



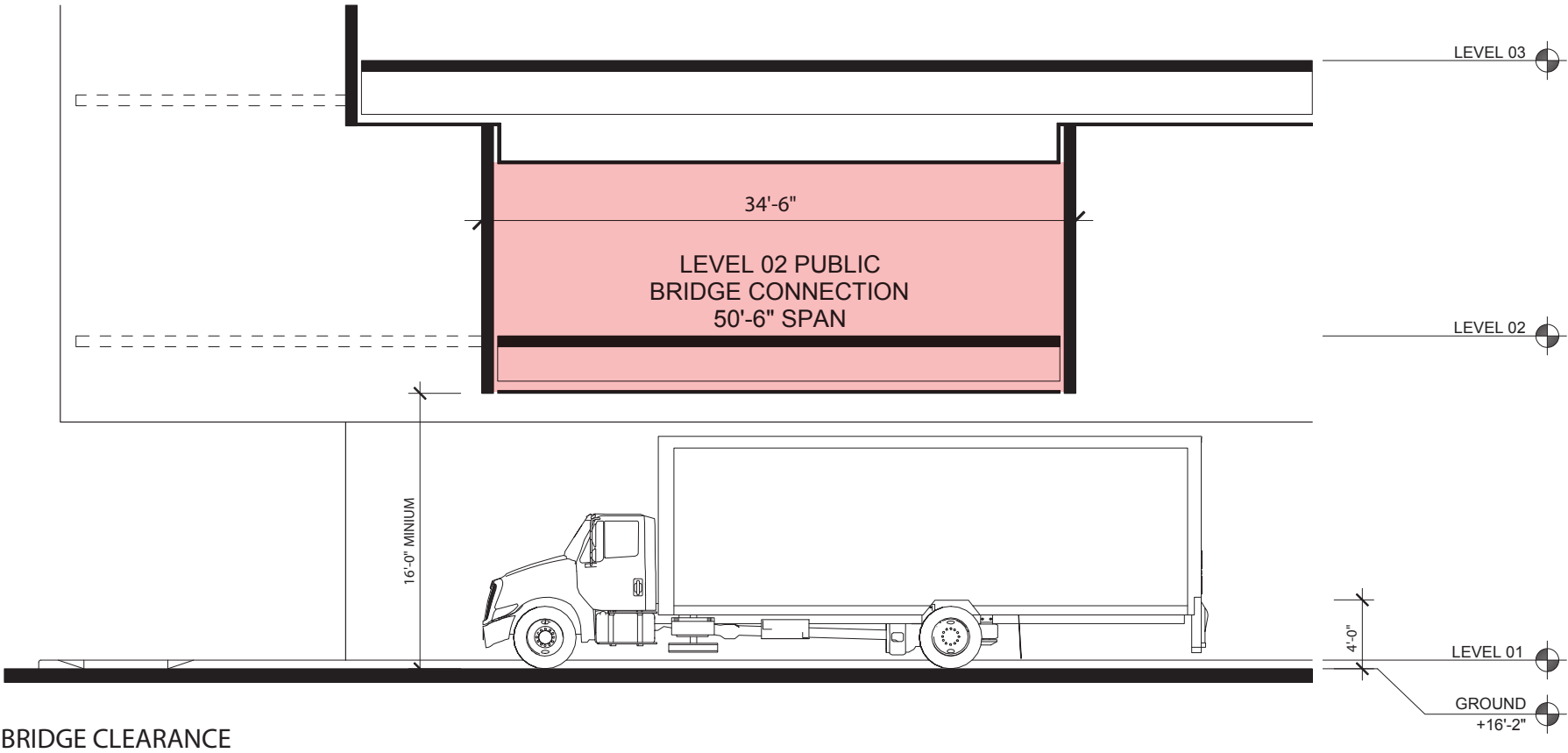
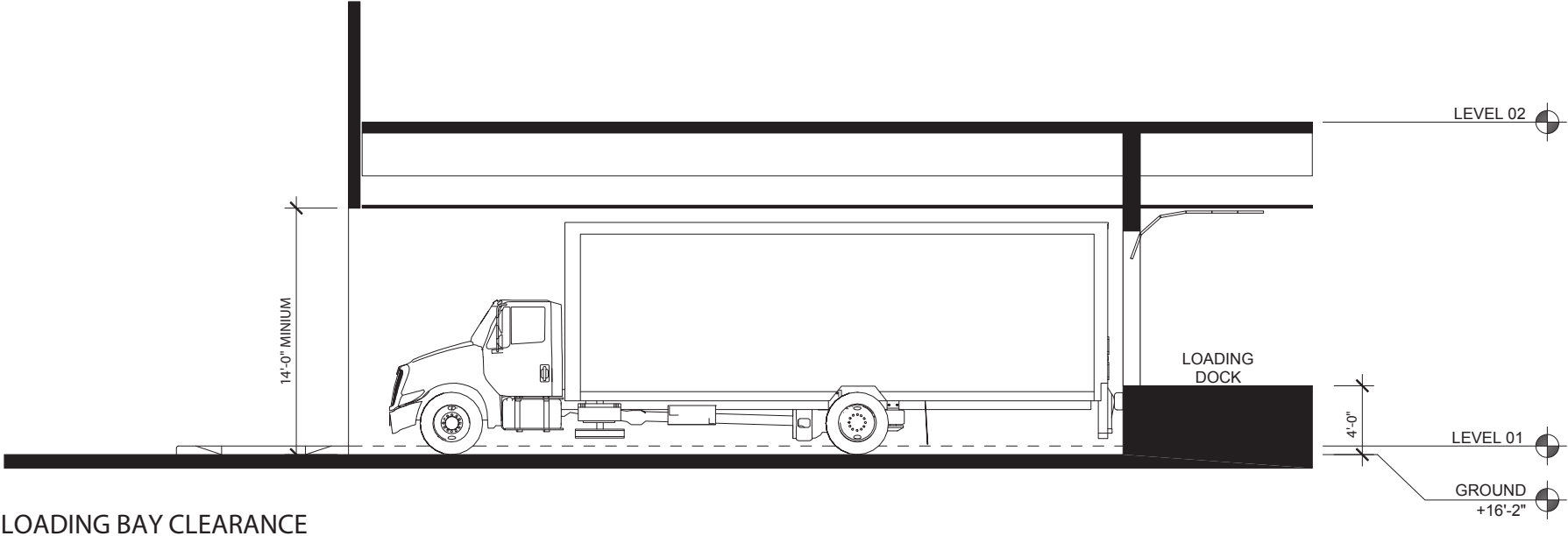


# LIFTED - ENLARGED N GROVE SECTION

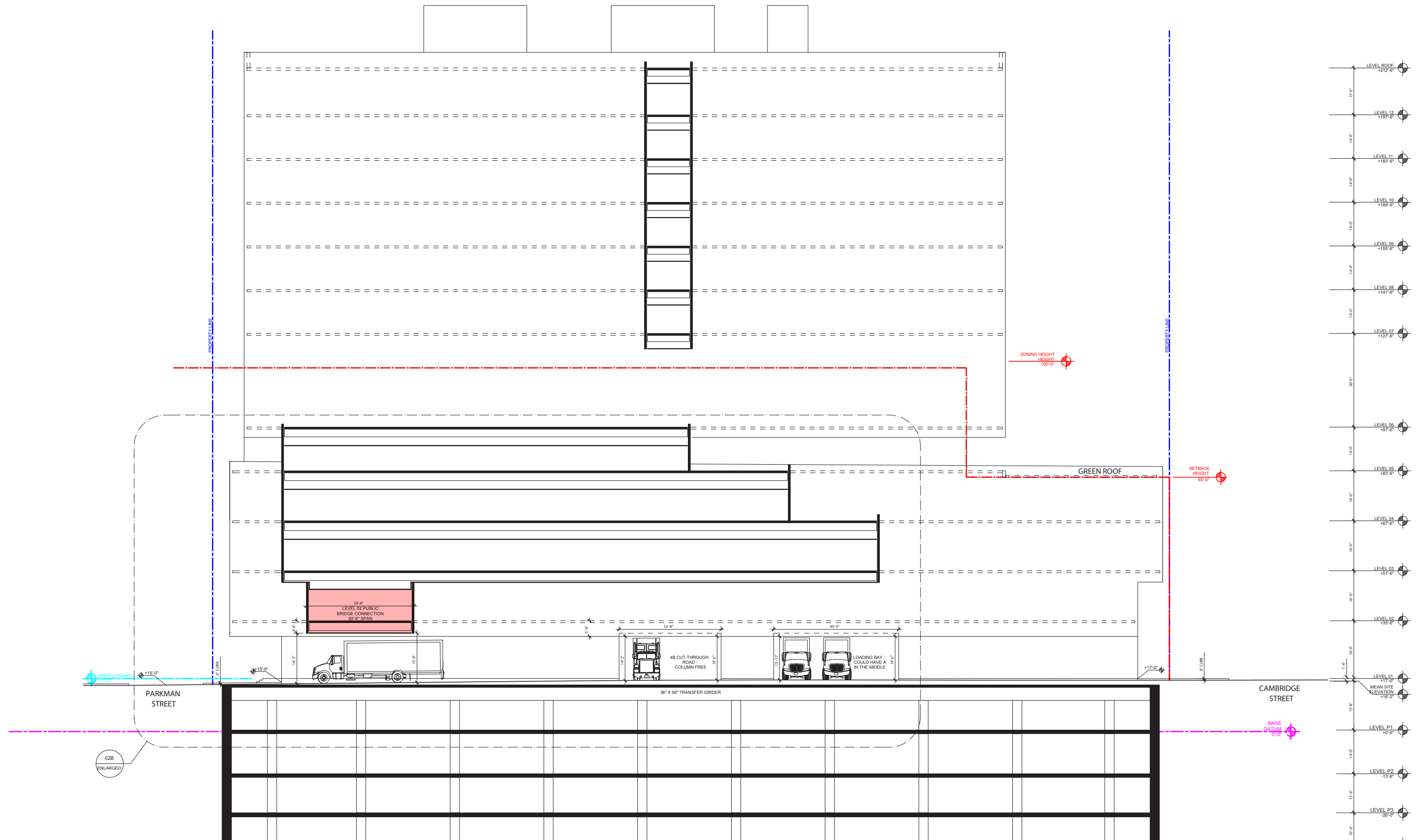
- Requires a 1% slope for Level 02
- Level 01 located at the mean site elevation of 17'-0"
- Provides passive resiliency strategies
- Loading bays provide 14'-0" minimum clearance
- Bridge connections provide 16'-0" minimum clearance



# TRUCK CLEARANCE REQUIREMENTS



# LIFTED - N ANDERSON SECTION



THANK YOU