

Congress Street Bridge Lighting Project RFP

1 December 2016

Available Light
Claudia Ravaschiere



Boston Planning & Development Agency
1 City Hall Square
Boston, Massachusetts



**boston planning &
development agency**







1 December 2016

Teresa Polhemus, Exec. Dir./Secretary
Boston Planning & Development Agency
One City Hall Square, Room 910
Boston MA

Re: Congress Street Bridge Lighting Project Project Approach
Project Fee Proposal Submitted under separate cover

Dear Ms. Polhemus,

Thank you for the opportunity to prepare this proposal for the Congress Street Bridge Lighting Project. We are very excited to see the BPDA's desire to celebrate an iconic feature of Boston's historic architectural waterfront. In turn, we have assembled a team of amazing Design/Build professionals. We are delighted to participate in this process in collaboration with you.

As was made clear in the proposal, there is far too much work to be done, reconnaissance to acquire, and working through dozens of details to present you with anything better than an educated estimate for this project. The proof will come the detailed design and the pricing will be validated by sending the design out to bid in an RFP process administered by the BPDA.

More importantly, our proposal comes in the form of two section. The first is adding lighting to the bridge to celebrate the architecture, heritage, and location of the bridge. This lighting design is meant to fit within the originally established \$470,000 budget ceiling.

The second section of our proposal is in collaboration with the Fort Port Channel artists Claudia Ravaschiere & Michael Moss. Our goal is transform the wildy popular but temporary public art piece, *Shimmer* into a permanent year-round presentation that includes a dynamic electric light solution so that *Shimmer* can now also be enjoyed at night. It is our intention to cover the cost with a public private fundraising campaign that would be orchestrated by our team.

Note: We have already received a positive response regarding funding *Shimmer* from Jim McGaugh, Regional Manager for Government Affairs & Policy of GE.

Project Proposal Summary

Exclusions

- Regrettably, due to an out of town business commtiment, Steven Rosen is not able to attend an interview on either 8 or 9 December. Would the BPDA consider 14, 15

or 16 December?

- Our current proposal does not include any lighting intervention on the building or ships owned or operated by the Tea Party Museum. Certainly, we are amenable to further discussion on this topic.

Project Team

AVAILABLE LIGHT

Main Contact: Steven Rosen, steven@availablelight.com

Project team includes:

- Project Manager: Jim Covenor
- Design Associate: Jessica Krometis
- Design Assistant: Po-Yang Sung
- Managing Director: Rick Chamberlain

Founded in 1992, clients come to Available Light for our passionately creative, exciting and thoughtful design solutions—delivered on time and on budget. We think of lighting as the visual glue that helps hold a space—or many disparate spaces—together; we work closely and collaboratively with the team to ensure that the final built environment is compelling, seamless, without perceived visual conflict, and virtually free from glare.

RESPONSIBILITY

Bridge Lighting

- Develop design concept and approach
- Specify the lighting equipment, hardware and control systems required to deliver the approved design.
- Work with team (which includes the BPDA along with other city & state officials) to develop a proof of concept mockup of key design elements.
- Work with team (which includes the BPDA along with other city & state officials) to develop an RFP to send to bidding installation contractors.
- Meet with team members on a regular basis to assure that all concerns are carefully studied and addressed.
- Perform minor and reasonable changes or modifications to the original lighting design as becomes to conform to regulatory code and safety regulations.
- Develop first phase of content for streaming through the lighting system.
- Work with installation contractor and the city during install and final programming to assure a successful product.

Shimmer

- Work with artists to develop design concept and approach

- Specify the lighting equipment, hardware and control systems required to deliver the approved design.
- Work with team (which includes the BPDA along with other city & state officials) to develop a proof of concept mockup of key design elements.
- Work with team (which includes the BPDA along with other city & state officials) to develop an RFP to send to bidding installation contractors.
- Meet with team members on a regular basis to assure that all concerns are carefully studied and addressed.
- Perform minor and reasonable changes or modifications to the original lighting design as becomes to conform to regulatory code and safety regulations.
- Develop first phase of content for streaming through the lighting system.
- Work with installation contractor and the city during install and final programming to assure a successful product.

CLAUDIA RAVASCHIERE & MICHAEL MOSS

Main Contact: Claudia Ravaschiere, crav@createsound.com

RESPONSIBILITY

Shimmer

- Expand and transform originally temporary public art piece into a permanent installation.
- Specify the materials required to deliver the approved design.
- Work with team (which includes the BPDA along with other city & state officials) to develop a proof of concept mockup of key design elements.
- Work with team (which includes the BPDA along with other city & state officials) to develop an RFP to send to bidding installation contractors.
- Meet with team members on a regular basis to assure that all concerns are carefully studied and addressed.
- Perform minor and reasonable changes or modifications to the original lighting design as becomes to conform to regulatory code and safety regulations.
- Develop first phase of content for streaming through the lighting system.
- Work with installation contractor and the city during install and final programming to assure a successful product.

Scope of Work

Task 1: Background Review • Tasks as prescribed in BPDA RFP

The design team has familiarized themselves with the background material provided by the BPDA and we believe the design concepts we envision can be accomplished within the constraints of the site and the structure, and the environmental conditions surrounding the Ft. Point Channel area.

Bridge Lighting: Completed with submission of RFP
Shimmer: Completed with submission of RFP

Task 2: Conceptual Design

Schedule of tasks/meetings as prescribed in BPDA November 2016 RFP

Note: maximum of 2 meetings

Bridge Lighting: 6 weeks

Shimmer: TBD

Task 3: Preliminary Design of Preferred Lighting Option

Schedule of tasks/meetings as prescribed in BPDA November 2016 RFP

Note: maximum of 2 meetings

Bridge Lighting: 9 weeks

Shimmer: TBD

Task 4: Permitting and Public Comment Support

Schedule of tasks/meetings as prescribed in BPDA November 2016 RFP

Note: maximum of 5 meetings

Bridge Lighting: 9 weeks (depends on coordination efforts conducted by BPDA)

Shimmer: TBD

Task 5: Final Design

Schedule of tasks/meetings as prescribed in BPDA November 2016 RFP

Note: maximum of 2 meetings

Bridge Lighting: 8 weeks

Shimmer: TBD

Task 6: Construction Administration (CA) • anticipated completion: 10 November 2017

Schedule of tasks/meetings as prescribed in BPDA November 2016 RFP

Note: maximum of 2 meetings + 20 site visits + 2 programming sessions

Bridge Lighting: 10 weeks (maximum if all previous phases hold to estimate)

Shimmer: TBD

Task 7: Maintenance Plan • Tasks as prescribed in BPDA RFP

Schedule of tasks as prescribed in BPDA November 2016 RFP

Note: maximum of 2 meetings

Bridge Lighting: 4 weeks, post project completion

Shimmer: TBD

Preliminary Design Narrative

Connections. By their very nature bridges are about connections. But the 1930 Congress Street Bridge is something special. For over 80 years this bridge has been witness to a breathtaking urban experiment. The connection between “old” Boston represented by the financial district across the Ft. Point Channel to “new” Boston

represented by the Seaport District could not be more captivating or alluring. Our team seeks to evoke and celebrate the architectural heritage & details of the structure, the physical connection & dialog between two grand places in our city, the watershed below that connects us with worlds away, and the notion that Bostonians look forward to the future as a hub of technological innovation, daring, and cultural accomplishment.

And in order to fully realize our vision for the Congress Street Bridge we must involve the community not only in fleshing out the final realization but also to assist with the funding of the work. This is community placemaking and celebration intended to bring the city and its many disparate parts together.

Our base design seeks to celebrate the architectural/engineering detail of the bridge while creating a striking visual connection of the span between two important land masses. The Congress Street Trunion Bascule Bridge is unique in its architectural details; we believe by highlighting many of the individual details we will rejuvenate and celebrate this historic span. Our approach is meant to be a collaborative design process demonstrating flexibility in design and consistent involvement/management from beginning to completion.

In addition to this base design, we are proposing a separately funded transformation of the temporary public art installation *Shimmer* to a permanent installation to be enjoyed both by day and by night.

We look forward to working with the BPDA to help frame our concepts in ways that meet your aesthetic, technical, and financial requirements/aspirations.

Base Design (intended to be fully funded by the budget allocated by the BPDA)

1) Stone Pier Accents

We intend to accent the 13-14 Desmond & Lord designed stone piers by locating 2: LED spotlights on each pier. These spotlights, located in the two corners facing away from the bridge, will accomplish two things: first they will artfully accent and draw attention to one of the more beautiful architectural details of the bridge. Second, directing the light downward into the water will maximize the reflections of glistening light in the water thus expanding the visual impact and scale of a relatively simple lighting treatment. These LED spots would project warm white light.

2) Diagonal Bascule Trusses

Dynamic color-changing LED spotlights, hidden from view within the structure, internally light the diagonal bridge truss supports to reveal structural form and celebrate the architecture. Programming the spotlights to be aesthetically synchronized to what is going on overhead with the boxes creates a cohesive

lighting display.

3) Drawbridge Horizontal Main Beam

As a way of highlighting past engineering prowess with present technological advances, we will extend our lighting to the top of the drawbridge mechanism further highlighting the architecture. Dynamic color-changing LED spotlights, mounted on the beam, graze light across the face to highlight this important architectural gem.

4) Accent “Paintbrushes” of Light

Up to 15 warm white accent eW Burst Compact Powercore lights will be located in and around the bridge, hidden from view, to create highlights that celebrate the architectural details (i.e. the four main vertical truss towers that support the overhead counterweight cage) of the structure. These paintbrush highlights would not be color changing but would have discrete dimming control.

5) Strauss Overhead-Counterweight Envelope

One of the most recognizable architectural features of the Congress Street Bridge is the remaining structure that originally housed and supported the counterweight system that allowed the bridge to open and close for channel water traffic. Although we believe it important to limit the amount of new equipment mounted over both vehicle and pedestrian traffic, a relatively simple line of light securely mounted to the base of the enclosure and pointed up at the framework would add a compelling layer of appreciation for nighttime viewing.

6) Under Bridge Trestle Truss

We envision a line of dynamic light that runs along both the north and south faces of the under roadway main carrying beams. This kinetic line of light can be programmed to be either a visual data indicator (i.e. communicates traffic conditions on and around the Congress Street Bridge) or be a more random set of pre-programmed lighting streams that span the channel delightfully reflected on the watersheet below. Although our conceptual renderings suggest a theatrical color changing array of light, we could just as easily limit the palette to a single hue (i.e. white light) or to much tighter dynamic color palette (i.e. variations of pale blue to deeply saturated blue or from warm white light to cool white light.)

Addition of Shimmer (A public art project requiring additional funding to realize)
Shimmer began as a temporary public art installation by Claudia Ravaschiere and Michael Moss. The piece was composed of brightly colored acrylic pendants installed between the railing supports of the Congress Street Bridge. Using the refractive

qualities of fluorescent and jewel toned plexiglass, *Shimmer* activated the Congress Street Bridge to cast multi colored streams of light along the pedestrian path of the bridge. The artists are seeking to make *Shimmer* a permanent piece of public art through a collaboration with Available Light, Inc. in response to this RFP to light the Congress Street Bridge. *Shimmer* will be executed in permanent laminated architectural glass and will be exhibited on both sides of the bridge. Each of the glass panels (or fewer depending on budget) will be internally illuminated with white LED light so the edges of each glass panel glow at night. A variety of kinetic patterns will be obtainable by a powerful programming system fronted by an easy to operate tablet user interface. This lighting effect not only helps to expand *Shimmer* into a year-round installation, it increases the visibility and enjoyment of the piece to evening viewing. *Note: Please see the conceptual video attached to this proposal (on a flash drive) that illustrates the seemingly endless number of effects that can be enjoyed.*

Installation

Systems Controls

The drawbridge lights and trestle lighting will have significant programming/playback capability. Utilizing local, existing power where applicable we can discreetly dim the LED fixtures utilizing wireless control technology and electronic low voltage dimmers local installed at each fixture. Lighting programming will consist of static and dynamic effects while ensuring a tasteful design and minimizing the impact the system will have on drivers traveling over and around the bridge. The lighting control system is fully programmable to include a full calendar and astronomical events. The system can be programmed to turn on, adjust intensity, change programs, and turn off without daily interaction. Calendar events can be programmed years in advance as desired. A custom user web interface will be designed based around the wants and needs of the end user to include scene selection and the ability to change to overall color for special events or functions. Training will include but is not limited to basic operation and troubleshooting for the lighting system. Advanced programming of the control system can be provided for a small group if required.

Labor

We have calculated our rates based on the current prevailing hourly labor rates in the city of Boston (i.e. an electrician is carried at \$78.50/hour) Our labor estimate includes both lifts, ladders, & other heavy machinery as well as permitting costs.

Maintenance Plan

Annual maintenance should include a full inspection of all fixtures to be sure no vandalism or accidents have occurred that could cause a failure to the system or potential injury. The inspection should include cleaning all luminaire lenses, looking for

broken fixture mounts, exposed wiring, water damage or infiltration, and overhead rigging of the cubes. Regular visual inspections are suggested whenever maintenance personnel are present on the bridge. Annual maintenance should also include any programming updates, firmware updates or changes to the lighting system that may be required or requested by the city.

Long Term System Monitoring

- Every effort has been made to select luminaires, control systems and mounting hardware specifically designed for a harsh marine environment with winter exposure.
- The BPDA may wish to consider deploying Phillips Kinetics' new ActiveSite cloud-hosted application for remotely monitoring and managing LED lighting systems with real time feedback about system performance. The concept of employing a monitoring strategy such as ActiveSite becomes far more compelling as you contemplate lighting additional bridges and other public architectural icons.

Please Note: Providing this system is not included in this proposal.

Notes

- We have reviewed Appendix B, Appendix C, Appendix D, Exhibit B (*which was blank*), Exhibit C, & Exhibit D. We take no issue with these documents except as they may relate to the exclusions and notes found within both the Project Approach and Fee Proposal Estimate Documents. We expect the BPDA to be as respectful of our time as you expect us to be respectful of yours. Our fee/services/equipment estimates do not accommodate being drawn into countless meetings and presentations. We will be reasonable. Also, if the BPDA insists on significant changes to our proposed approach, we will be happy to accommodate but a renegotiation of fees and costs may be required.
- As may be required, we will work with the proper authorities to be sure our lighting solutions do not impinge on or challenge the safety and free circulation of vehicular traffic and marine navigation.
- Some of our solutions may require additional structural elements or fasteners to be integrated into the existing fabric of the bridge. At all times we will consult with the proper authorities to be granted approval on achieving our goals with the least amount of impact on existing conditions.
- Every effort will be made to use DLC sanctioned luminaires while also maintaining the vision of the design. We will work with the local electrical utility to seek out novel ways of being awarded subsidies and grants.

Thank you very much for your consideration.

Congress Street Bridge Lighting Project Project Approach
Presented to the Boston Planning & Development Agency
1 December 2016, page 9 of 9

Sincerely,

A handwritten signature in black ink that reads "Steven Rosen". The signature is fluid and cursive, with a large initial "S" and "R".

Steven Rosen, FIALD
President and Creative Director

In collaboration with Claudia Ravaschiere, creator of *Shimmer*.

IMAGES



Daytime Rendering with Shimmer

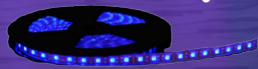
Small profile warm white accent lights graze stone piers and reflect in water.



Internally lit diagonal bridge truss supports to reveal structural quality of architecture with a dynamic color-changing light source.



Wash bottom trestle beam with grazing dynamic color-changing light source.



15 small accent lights strategically located to reveal key architectural details.



Graze light across face of main drawbridge beam with dynamic color-changing light source.



Nighttime Rendering without Shimmer

Shimmer panels will be individually illuminated and have the ability for animation and dynamic changes



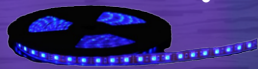
Small profile warm white accent lights graze stone piers and reflect in water.



Internally lit diagonal bridge truss supports to reveal structural quality of architecture with a dynamic color-changing light source.



Wash bottom trestle beam with grazing dynamic color-changing light source.



15 small accent lights strategically located to reveal key architectural details.

Graze light across face of main drawbridge beam with dynamic color-changing light source.



Nighttime Rendering with Shimmer

RESUMES

AVAILABLE LIGHT

Steven Rosen, FIALD President & Creative Director



Education

MFA/1984, NYU Tisch School of Fine Arts, New York NY
BFA/1981, Webster University, St. Louis MO

Professional Memberships

IALD, IES, DLF, AAM, ASTC, NAME

Professional History

1992 - Present President and Principal, Available Light, Salem, MA
1987 - 1992 Creative Director, The Norfolk Group, Inc., Norfolk MA
1985 - 1987 Lighting Designer, TLA Lighting Consultants, Salem MA

Overview

It was Steven's keen interest in applying theatrical lighting techniques to traditionally non-theatrical environments that led to his founding Available Light in 1992. The originality and grand scale of Steven's designs are evident in such one-of-a-kind award-winning projects as: The Neural Climber interactive experience at The Franklin Institute, the Aramco Oil Exhibit, lighting for the spectacular 150th anniversary celebration of Horseshoe Curve, and the architectural installation of an all LED lighting system in the Rotunda of the National Archives—home of the US Constitution. Steven's commitment to responsible design solutions, including assuring LEED certification for a number of projects, is central to his work.

Steven holds an MFA from NYU and is a Fellow of the International Association of Lighting Designers. He authored a chapter for a publication on Museum and Exhibition Lighting, holds a patent on LED Sports Lighting, and has presented at conferences and meetings across the United States and around the globe, from Mexico City to Beijing and from India to Brazil. Steven is a Past President of the IALD Education Trust, and endows a scholarship in architectural lighting design, both of which grew out of his passion to develop the next generation of lighting designers.

Major Projects

Projects in Boston have included: 160 Federal Street, Wentworth Institute of Technology, the Channel Center Garage, Trip Advisor Corporate Headquarters, and the New England Aquarium. Museum work honored with the coveted Themed Entertainment Association Award includes Liberty Science Center, The U-505 at MSI Chicago, the National Museum of the Marine Corp, The National Infantry Museum and The Reynolds Education Center at Mt. Vernon. Architectural works include projects for the Harvard Business School, MIT, UMass, Bain & Company, the Sea Island Cloister Hotel and Spa, Boston Children's Hospital, Penn State Medical Center, Sprint and Sunglass Hut.

Awards

In 2002, Mr. Rosen was honored with the LDI Lighting Designer of the Year; in 2003 he was received the IALD Radiance Award—architectural lighting's highest honor; and in 2011 he given the LDI Redden Award for sustained achievement in lighting design. Dozens of his projects, from Boston to Bulgaria, have been recognized for awards.

AVAILABLE LIGHT

Jessica Krometis, Jr. Associate IALD Designer

Education

MFA/2015, Stage Design, Northwestern University, Chicago IL
BA/2009, Theatre Design, Columbia College, Chicago IL

Professional Memberships

IALD, IES, IALS Co-Chapter Coordinator New England

Professional History

2015 - Present Designer, Available Light Inc. Salem MA
2014 Intern, Available Light Inc, Salem MA
2012-2015 Graduate Assistant and Lecturer, Northwestern University, Chicago IL
2009-2012 Freelance Lighting Designer, Chicago Area Theatres



Overview

Jessica's work can be seen on campus at Northwestern University in Evanston, IL. As well as theatre design, she designed lighting for the mural walls of the Tech Building and at the Alice Millar Chapel that illuminates a beautiful stained glass window at night.

Before coming to graduate school, she designed several shows in the Chicago area and New York with companies including American Theatre Company, Theatre Wit, Profiles Theatre, Stage Left Theatre, Artistic Home, and Jackalope Theatre, just to name a few. She has also been the assistant designer for exhibits at the Museum of Science and Industry and the Museum of Contemporary Art Chicago and theater productions at Goodman Theatre, Lookingglass Theatre Company, Court Theatre, Chicago Children's Theatre and Drury Lane Theatre.

Major Projects

As a Designer with Available Light, Jessica worked on lighting such projects as the Harvard Museum of Science and Culture Glass Flowers Exhibit and the Marvin Windows Showroom in Boston. In progress projects include the Yorktown Victory Center and Footprint Power Salem Harbor Station.

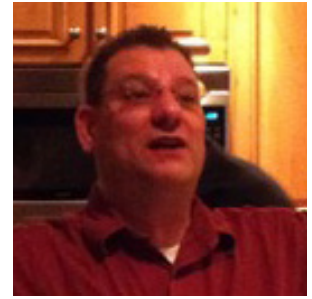
Awards

IALD Emerging Professionals Scholarship, 2015; John Woodward Memorial Award- Outstanding Lighting Design Student, 2015; USITT American Student Design Exhibitor in the 2015 Prague Quadrennial for Aimée and Jaguar; 2015 USITT Young Designer's Forum Exhibitor; Jeff Award for Outstanding Production (Non-equity) for Killer Joe; Merritt Award: John Murbach for Excellence in Collaboration, 2008; The Liberace Foundation for the Performing and Creative Arts Scholarship, 2007-2009

AVAILABLE LIGHT

James Covenno

Project Manager



Professional History

2016-2017	Construction Administrator, PCA Architecture & Design, Boston MA
2016-2017	Consulting Owners Representative, Various Companies, Boston MA
2013-2015	Manager of Construction and Development, HML Hospitality, Inc (Division of Morningside Grp)
2009-2013	Resident Engineer, Division of Capital Asset Management and Maintenance
2001-2008	Associate Architect/Construction Coordinator, Livermore Edwards & Associates
1998-2001	Field Coordination Manager/Quality Control Engineer, Interstate Engineering Corporation
1994-1998	Planning Coordinator/Permitting Engineer, ICF Kaiser Engineers of MA, Deer Island Facilities
1993-1994	Project Manager, L&H Construction -- Restoration of the Historic Shops at Fanueil Hall Market
1989-1992	Construction Coordinator, Commonwealth of MA, Division of Capital Planning & Operations

Overview

With over 25 years' experience in management and supervision of construction/design contracts, in the both the public and private sectors. He has Ability to understand the construction and design process from program coordination, to scheduling of multi-discipline engineering teams and construction administration. Well versed in chapter 149 and Chapter 30 project guidelines and procedures. Performed Bid evaluations for MWRA on Deer Island WWT. DCAM experience with bidding and procurement on publically funded projects.

Public Projects

Fanueil Hall Market Shops, CHOICE Housing Program, Deer Island Wastewater Treatment Facilities, DMH&R Governor's Special Message on Mental Health, University of Massachusetts at Amherst

Private Sector Projects

University of Connecticut, University of New Hampshire, Tufts University, Sheraton Hotels, Heckfield Place, Various restaurant chains, University of Massachusetts at Amherst

AVAILABLE LIGHT

Claudia Ravaschiere

Artist

Education

MFA, Maryland Institute, College of Art Baltimore, Baltimore MD

BFA, University of Hartford, Hartford School of Art, Hartford CT

Parsons School of Design, New York NY

Community Presence

Fort Point Arts Community Board of Directors

Selected Exhibitions

2016 Shimmer Public Art Installation Boston MA

2015 Celestial Winter Lights Public Art Installation
Boston, MA

2015 Lustrous Lines- Conempoerary Metalpoint
Drawing Morris Graves Museum of Art, Eureka CA

2015 Eight Nights, Eight Windows Public Art Installation
Boston, MA

2015 Bright Side II Public Art Installation Boston, MA

2014 Flutter Public Art Installation Boston MA

2014 Shimmer Public Art Installation Boston MA

2014 15th Annual Francis N. Roddy Competition
Concord Art Association Concord MA

2014 Nostalgia Atlantic Wharf Gallery Boston MA

2013 Color Quark Public Art Installation Boston MA

2013 Bright Side of the Road Public Art Installation
Boston MA

2013 Canopy Public Art Installation Boston MA

2012 The Repeat Show Atlantic Wharf Gallery Boston
MA

2012 Juried Show Concord Art Association Concord
MA

2011 Street Cathedral Public Art Installation Fort Point
Boston MA

2011 Bells- Installation The Children's Museum Boston,
MA

2010 Three Gallery at 300 Summer Street Boston, MA

2010 Conversations Art at 12 Boston, MA

2009 The Luster of Silver- Contemporary Metalpoint

Drawings, Evansville Museum of Art and Science
Evansville, IN

2009 The Art of Science Boston City Hall, Boston, MA

2008 The Windows Project Boston, MA

2008 Nature and Balance Arsenal Center for the Arts,
Watertown, MA

2007 Bridge of Sighs Interactive Sound Installation,
Boston, MA

2006 The Luster of Silver Telfair Museum, Savannah,
GA

2005 Precious Interactive Sound Installation Boston,
MA

2005 The Art of Science Boston City Hall, Boston, MA

2005 Transformations Arsenal Center for the Arts,
Watertown, MA

2005 Pretty Sweet: The Sentimental Image in
Contemporary Art, DeCordova Museum, Lincoln, MA

2003 Hidden Language Fort Point Arts Community
Gallery, Boston, MA

2003 The Book Reconsidered Mobius, Boston, MA

2001 The Drawing Show Boston Center for the Arts,
Boston, MA

2000 Dreaming Details Lillian Immig Gallery Emmanuel
College, Boston, MA (solo exhibition)

2000 Mt. Royal 25th Anniversary Invitational Maryland
Institute, College of Art, Baltimore, Maryland

1999 Concealed - Revealed Woman Made Gallery,
Chicago, Illinois



AVAILABLE LIGHT

Michael Moss

Artist

Professional History

Founder and Owner of Soundscape Productions – 32-year-old business specializing in music composition, music and spoken-word recording

Performed as reader at symphonic premiere of original composition Polar Express with East Texas Symphony Orchestra November 2007 and again in 2014

Former President and CEO CreateSound, Inc. – Specialized in audio email marketing for entertainment and media companies

Inventor of Aud-eMail PlayCorder – audio messaging software facilitating personalized audio emails which market entertainment products

Sound Installation and Visual Artist



Sound Installation & Visual Art

Collaborator with artist Claudia Ravaschiere

- Shimmer (2016) Public Art Installation, Boston, MA
- Celestial (2015) Public Art Installation, Boston, MA
- Bright Side II (2015) Public Art Installation, Boston, MA
- Eight Nights, Eight Windows (2015) Public Art Installation, Boston, MA
- Flutter (2014) Public Art Installation, Boston, MA
- Shimmer (2014) Public Art Installation, Boston, MA
- Color Quark (2013-2014) Public Art Installation, Boston, MA
- Bright Side of the Road (2013) Public Art Installation, Boston, MA
- Canopy (2013) Public Art Installation, Boston, MA
- Street Cathedral (2012) Fort Point Open Studios, Boston, MA
- Bells (2011) Boston's Children's Museum
- Chiming Benches (2007) Exhibited at Arsenal Center for the Arts, Watertown, MA, 2007, in permanent collection at Perkins School for the Blind
- Bridge of Sighs (2006) Fort Point Arts Community Open Studios
- Precious (2004) Exhibited Fall 2005- Winter 2006 in Boston City Hall. At it's premiere, artists and installation subject of profile on National Public Radio
- You Are Here (2003) Exhibited at Arsenal Center for the Arts, Watertown, MA, 2006
- Musical Chairs (2002) In permanent collection of Boston's Children's Museum

PREVIOUS EXPERIENCE

AVAILABLE LIGHT

150th Anniversary Celebration of Horseshoe Curve

Altoona PA



To celebrate the Horseshoe Curve's 150th anniversary, Osram Sylvania and Norfolk Southern Railroad teamed up to sponsor a July 4th lighting and fireworks extravaganza. The event was lit with 45: 7,000 watt automated searchlights, 100: synchronized strobe lights, and dozens of theatrical spotlights mounted both on a moving half-mile long train and distributed throughout the surrounding landscape. As the train entered the curve, lighting danced and changed color & focus to the live accompaniment of Altoona PA native, Paul Winter. The finale included an exciting fireworks display.

Producing this event was as much a military logistics challenge as it was an artistic expression requiring a lighting crew of 25+ people. A series of minivan-sized generators were hoisted onto the rail cars to create a mobile electrical plant to power all the train-mounted lighting gear.

The Horseshoe Curve is a National Historic Civil Engineering Landmark; its role in the westward expansion of the United States and its continuing importance to the national economy was certainly deserving of celebration. It was a pull-out-all-the-stops night to remember.

Client: Osram Sylvania
Client: Norfolk Southern Railroad



AVAILABLE LIGHT

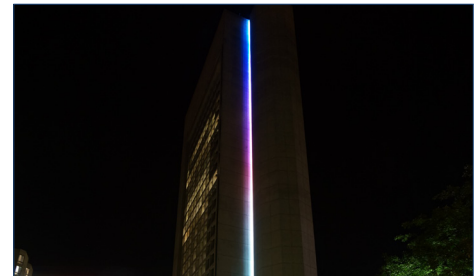
177 Huntington Avenue

Boston MA



There were three main goals for the new facade and lobby of 177 Huntington Avenue: to illuminate the exterior of a landmarked building, creating a new cityscape icon; to blend the new thin-glass canopy into the existing architecture; and to add unobtrusive accent lighting to the landmark lobby.

Using a 350' long line of narrow beamspread linear LED grazer luminaires mounted in an existing architectural niche, an elegant line of light extends from the bottom to the top of the building. The fixtures are controllable in 4' increments, with color changing options for special events. Achieving a perfect line of light all the way up the building required extensive mockups to ensure every detail was implemented properly. Lighting was built into one side of the canopy to sidelight the glass panels, creating a lit surface with no visible fixtures. The entry portal was uplit with concealed lights on top of the canopy, marrying the new canopy with the existing architecture. Inside, adjustable track lights are discretely mounted on a window ledge to provide adjustable accent lighting for overhead sculptural pieces. Uplights accent the textured end wall of the lobby, providing a focal point upon entry.



Architect: NBBJ
Designer: ESI Design
Completed: 2015
Photos: Available Light, C Phillips, Halkin Mason

AVAILABLE LIGHT

Channel Center Garage

Boston MA

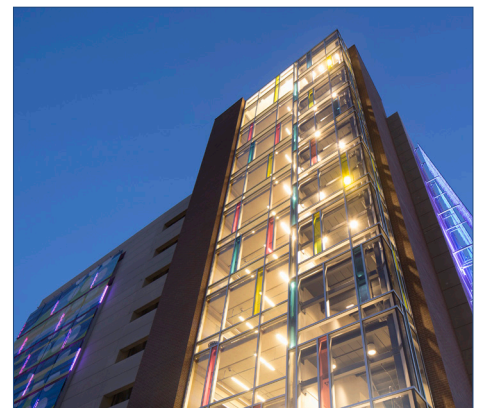
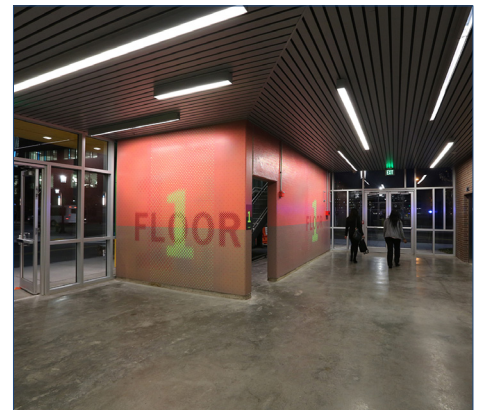


From the beginning, Available Light's mission was two-fold: First, design the lighting for a parking structure that met both the owner's minimum light expectations while also meeting or exceeding energy codes. The garage interior is primarily lit by 377, 83-watt, pendant-mounted LED fixtures, which are connected to a mesh network allowing for communication between fixtures and a central controller. Discrete control zones allow seamless modulation of light levels based on occupancy; fixtures dim to 10% during periods of inactivity. Central median located pole-mounted LED area fixtures illuminate the roof deck, providing sufficient light levels without requiring additional perimeter fixtures.

Second, create a programmable and dynamic lighting system to support an artist's vision for the exterior facade. Color-changing LED technology, located behind the exterior art panels, reveal shape and form during the nighttime presentation.

This building is an icon for the entire South Boston rejuvenation effort.

Architect: Spalding Tougias Architects, Inc.
Landscape Architect: Halvorson Design Partnership
Completed: 2014
Photos: Lisa Abitbol, Greg Dunwell, Available Light
Award: 2015 IES Award of Merit



AVAILABLE LIGHT

Giant Ocean Tank • New England Aquarium

Boston MA



From its inception in the 1960s, the Giant Ocean Tank was conceived as a glowing lantern at the “heart” of the aquarium. Any modifications required by the new renovation had to remain true to that vision. Unlike most modern day aquaria, a visitor viewing platform exists above the surface of the water. To create a more enjoyable experience, the architectural team proposed an overhead architectural domed ceiling, and although major scenic changes were not planned for the penguin habitat surrounding the tank, the lighting system was upgraded to be more exciting, robust, sustainable, and easily maintained.

Both white light and customized color-mixing luminaires were outfitted with deep snoots to minimize glare and spill. Varying beam spreads added depth and drama to the exhibit. Narrow beam “fingers” of light pierced through the water creating the effect of sunlight streaming in from above. Every effort was made to keep light off the walls of the tank to enhance the illusion of an unending horizon. In the Penguin area, LED spots were used in conjunction with custom fixtures adding color-toning to the area. Unlike fish, penguin biology is keenly affected by 24 hour light exposure. Consequently, penguin lighting was programmed to provide a more naturalistic circadian cycle for the animals.



Architect: Cambridge 7 Architects
Awarded: 2013 IES Award of Merit
Completed: 2013
Photos: Sebastien Raciot and Kewsi Arthur

AVAILABLE LIGHT

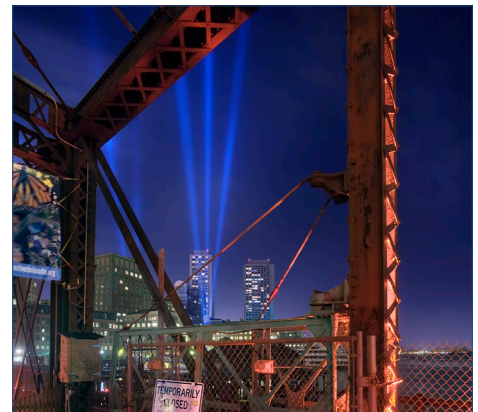
*illuminale*BOSTON

Boston MA



*illuminale*Boston was a temporary exterior lighting exhibit occurring around the city of Boston's Rose Kennedy Greenway. Much of the Metro Boston lighting community participated in the lighting festival that was anchored at the geographic epicenter of Boston's Big Dig by Corona, a celebration and installation at the Rowe's Wharf Hotel, produced by Available Light.

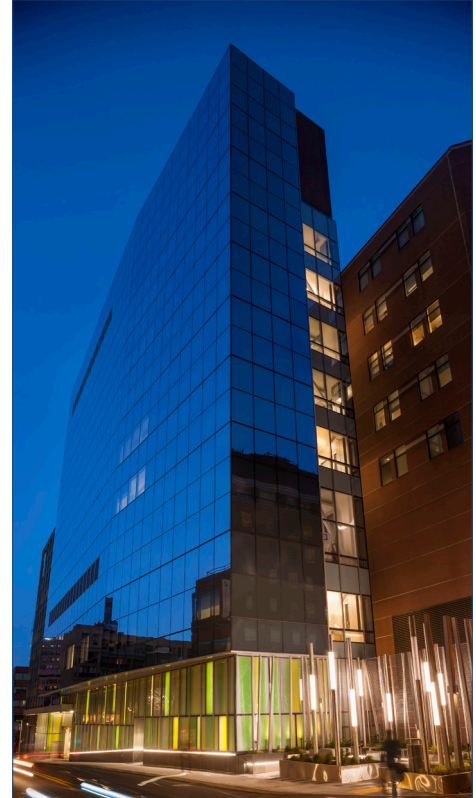
An array of high-powered xenon searchlights strategically located around the hotel complex pierced the nighttime sky in an ever-changing display of dancing beams of light. To enhance the kinetic presentation in the sky, the central dome was bathed in a wash of color changing light that will help to keep the installation grounded to the site.



AVAILABLE LIGHT

James Mandell Building • Boston Children's Hospital

Boston MA



The Mandell Building's facade was lit in a sealed environment – no one would be able to get in for maintenance. Thus, fiber optics were used to ensure longevity of the system.

Also included were the ambulance driveway, split into two roads, and an elevated courtyard garden. The garden required uplights to create drama.

Architect: Payette Associates
Completed: 2014
Photos: Warren Jagger

AVAILABLE LIGHT

Lolita Restaurant

Boston MA



AVAILABLE LIGHT

Marine Mammals Center • New England Aquarium

Boston MA



The New Balance Marine Mammal Center was a state-of-the-art extension to the existing New England Aquarium building, adjacent to their event space. Fixtures mounted to columns flanking the pool provided ambient light at walking surfaces, without affecting the animals. These fixtures also uplit the dramatic roof and indirectly lit the pool area. By avoiding downlights, patrons in the event space at night could see without having any light disturb the sea lions' natural rhythms. By integrating lighting into surfaces such as wooden handrails, stair fronts, and hanging panels, the architecture was kept simple and clean. The handrail lights were custom designed to fit owner and design requirements.

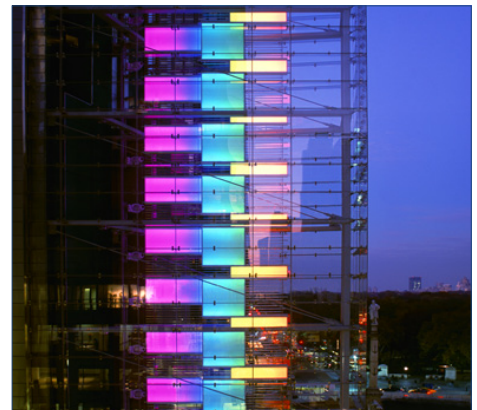
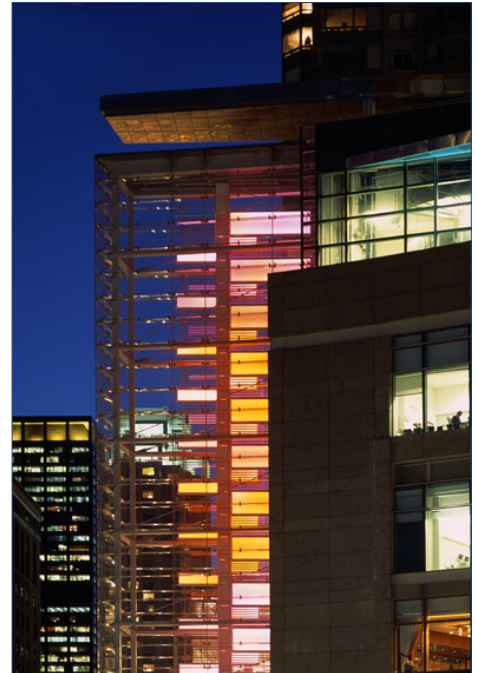


Architect: McManus Architects
Completed: 2009

AVAILABLE LIGHT

Time Warner Prow

New York NY



AVAILABLE LIGHT

Shimmer Art Installation: Claudia Ravaschiere and Michael Moss Boston MA



Shimmer was first installed on smaller scale in 2014. It spanned three railing sections of the bridge.

In order to expand the installation, the artists sought funding in 2016 through a grant provided by the Fort Point Channel Operations Board with funds from the Chapter 91 Waterways Regulation License #11419 for Russia Wharf, now Atlantic Wharf, which spanned the entire south side of the bridge- 39 railing sections. The Boston Arts Commission, and the Massachusetts Convention Center Authority generously granted additional support.

Shimmer is constructed from approximately 2000 pieces of acrylic and 3000 marine grade stainless steel swivels. The piece is approximately 600 feet long- the length of 2 football fields end to end.

During the period of time that Shimmer was installed on the Congress Street Bridge, thousands of people interacted and enjoyed the installation. Thousands of pictures have been snapped of Shimmer- Shimmer itself, Shimmer with kids, families, and friends of 2 legs and 4!





Representative Design Credits

Lighting Design for Boston Projects

IN PROGRESS

Paul Revere House - Boston MA

Architect: Mills Whitaker

Exhibit Design: Paul Revere House

Tufts Medical School Gross Anatomy Lab - Boston MA

Architectural lighting design for new gross anatomy lab

Architect: Payette

7 Tide Street - Boston MA

Architectural lighting design for retail space

Client: AW Hastings Co.

Architects: Baker Design Group and C&J Katz Studio

AMG Offices - Boston MA

Architectural lighting design for new office space

Architect: Baker Design Group

Rockport Group Corporate Headquarters - Boston MA

Architectural lighting design for retail and buyer space

Architect: Baker Design Group

Berklee Tower Restaurant and Stage - Boston MA

Architectural lighting design for university tower, restaurant, and performance space.

Client: HML Hospitality Inc.

Boston Latin School Science Classrooms - Boston MA

Architectural lighting design for renovated science classrooms

Architect: KMW Architects Inc.

COMPLETED

160 Federal Street Building - Boston MA

Architectural lighting design for renovated building, including lobby and exterior lighting.

Architect: Nelson

Wentworth Institute of Technology Library - Boston MA

Architectural lighting design for new library building

Architect: Perkins + Will

10 Milk Street - Boston MA

Lobby renovation

Architect: Synergy Investments

Channel Center Garage - Boston MA

Dynamic lighting “show” for garage screen wall façade. State-of-the-art occupancy sensing control system minimizes energy consumption.

Architect: Spalding Tougias Architects

177 Huntington Avenue - Boston, MA

Architectural lighting design for renovation of lobby and new exterior lighting

Architect: NBBJ

Boston Children’s Hospital - Boston MA

Architectural lighting design for façade and park

Architect: Payette Associates

Landscape Architect: Landworks

New England Aquarium Giant Ocean Tank & Penguin Tray - Boston MA

Exhibit lighting and control systems for museum renovation

Client: New England Aquarium

TripAdvisor Smarter Travel/FlipKey Offices - Boston MA

Architectural lighting design for new offices

Architect: Baker Design Group

Life is Good Offices - Boston, MA

Architectural lighting design for new offices

Architect: Baker Design Group

Ira Allen Building, Wentworth Institute of Technology - Boston MA

Architectural lighting design for renovation and addition

Architect: Perkins + Will

Ashmont Church - Boston MA

Lighting design for interior and façade renovation

Architect: John G. Waite

Lolita Restaurant - Boston MA

Lighting design for new Back Bay restaurant

Developer: C+S Hospitality Group

Hall of Human Life (thru DD) • Museum of Science - Boston MA

Architect: Cambridge Seven Associates

Exhibit Design: ESI

Boston Center for Jewish Heritage - Boston MA

Lighting design for site, and all public spaces of 500,000+ sq. ft. building

Architect: Mendes, Torrey & Spencer Architecture Preservation

Marine Mammal Center • New England Aquarium - Boston MA

Architect: McManus Architects, Inc.

Exhibit Design: Cambridge Seven Associates

Boston Children's Museum - Boston MA
Architect & Exhibit Design: Cambridge Seven Associates

Expressway Toyota - Boston MA
Lighting design for new car dealership
Architect: Livermore Edwards Associates

Center for Life Science Boston - Boston MA
Lighting design for new 18 story medical research tower & façade
Architect: Tsoi Kobus

Google - Boston - Boston MA
Lighting design for new Office Complex
Architect: Baker Design Group

Harvard Business School • McCollum Hall - Boston MA
Lighting renovation of 4 lecture/distance learning rooms + circulation spaces
Architect: Baker Design Group

Harvard Business School • Aldrich Hall- Boston MA
Lighting renovation of 9 lecture/distance learning rooms + circulation
Architect: Baker Design Group
2006 International Illumination Design Award

Northeastern University • Alumni Center - Boston MA
Lighting design for new installation full service center
Architect: Cambridge Seven Associates

Museum of Fine Arts School - Boston MA
Lighting renovation of school complex
Architect: Baker Design Group

Bain & Co.- Boston MA
Lighting design for new multi-floor corporate office environment
Architect: Gensler
2005 International Illumination Design Award

The Grandview - Boston MA
Façade Lighting for new condo tower
Architect: Jung Brannen

Faulkner Hospital - Boston, MA
Lighting design for hospital dining servery
Architect: MacManus Peterman

New England Aquarium • Living Links - Boston MA
Environmental/Exhibit lighting for two specialty exhibits
Client: New England Aquarium

Boston College - Boston MA

Lighting design for new dormitory/campus connector building

Architect: Baker Design Group

Harvard Business School • Ludke Hall - Boston MA

Lighting and control systems design for renovated classrooms, offices, lounges and public spaces hall

Architect: Baker Design Group

JFK Library • Jackie Kennedy Onassis Exhibit - Boston MA

Exhibit lighting for exhibit of dresses and gowns worn by Mrs. Kennedy during the White House years

Client: JFK Library

Boston College - Boston MA

Lighting renovation of O'Neill Library computer lab & distance learning classroom

Architect: Baker Design Group

The Longyear Museum - Boston MA

Exhibit lighting and control systems for new Mary Baker Eddy Center

Client: Amaze Design

New England Aquarium • Nyanja! - Boston MA

Environmental/Exhibit lighting for two theatrical specialty exhibits

Exhibit Design: New England Aquarium

2001 International Illumination Design Award.

Emerson's Restaurant - Boston MA

Specialty lighting design for front entrance of new downtown café

Architect: Darlowe Christ Architects, Inc.

New England Aquarium • Sounds of the Sea - Boston MA

Environmental lighting for touring exhibition

Client: New England Aquarium

Exhibit Design: B+B Design

Alpha Omega Jewelry Stores - Boston & Cambridge MA

Lighting design for premier New England jewelry retailer

Client: Baker Design Group

Titanic: The Exhibition - Boston MA

Exhibit lighting for temporary exhibition of reclaimed Titanic artifacts

Client: RutchikGroup/George P. Johnson

Bose Corporation Campus West Auditorium - Boston MA

Environmental, theatrical, and special effects lighting & control systems design

Architect: Pisani + Associates Architects

1998 International Illumination Design Award

Fleet Center - Boston MA

Lighting design for eastern façade sign - ever-changing watercolor light effect

Client: BN Productions

Featured in LD+A MAGAZINE | 1997 International Illumination Design Award

Fleet Center - Boston MA

Lighting design for main ticket lobby. Kinetic lighting effects add sparkle to a normally static environment

Client: BN Productions

Walter Suskind Memorial - Lobby of The Wang Center, Boston MA

Specialty lighting for new graphic panels for donor plaques

Client: Wang Center

Exhibit Design: Gallagher & Associates

LETTERS OF SUPPORT



Interior Design
Architecture
Engineering
Strategies
Workplace Services
Information Services

99 Chauncy
Boston, MA 02111
T (617) 778 7229
NELSONonline.com

November 23, 2016

Teresa Polhemus
Executive Director/Secretary
Boston Planning & Development Agency
One City Hall Square, Room 910
Boston, MA 02201-1007

Re: Letter of Recommendation – Available Light

Dear Ms. Polhemus:

Please consider this letter as recommendation for Available Light, on the Congress Street Bridge project.

As part of the team renovating the 160 Federal Street project for Beacon Capital Partners, Available Light’s knowledge of how best to integrate lighting directly into architectural details helped finalize the holistic design. As you know, 160 Federal is an historic landmark in Boston, which required extra sensitivity for all our design solutions. Available Light was able to distill our goals into the design to create a dramatic, flexible lighting system, while respecting the historic nature of the existing building. It was clear the designers were well-versed in the specific architecture of Boston, which kept our goals aligned, and they were able to deliver their system on time and on budget.

For the Congress Street Bridge Project, I wish to extend my recommendation for Available Light, without any reservations.

Sincerely,

Bradley T. Black
Managing Principal

architectural and engineering services offered by licensed affiliates

Atlanta
Baltimore
Bangalore
Boston

Cairo
Charlotte
Chicago
Dallas

Delhi
Hartford
Houston
Hyderabad

Minneapolis
Mumbai
New York
Newark

Norwalk
Orlando
Philadelphia
Richmond

San Francisco
San Jose
Seattle
St. Louis

Tampa
Tokyo
Toronto
Versailles

Washington, DC
Wilmington
Winston-Salem

29 November 2016

Teresa Polhemus
Executive Director/Secretary
Boston Planning & Development Agency
One City Hall Square, Room 910
Boston, MA 02201-1007

Dear Ms Polhemus,

I am writing to urge you to look favorably on Available Light in their proposal to illuminate the Congress Street Bridge in Boston.

As part of the team that created the sophisticated lighting and control systems for the Channel Street Garage. Available Light demonstrated creativity combined with an impressive knowledge of light sources, control systems, and a real team effort attitude about how best to use light in celebrating this structure.

Critical to Available Light's brief was not only the attractive dynamic color-changing façade but also the lighting and controls systems for the interior which included a lighting system that employs a wireless mesh network of control and command data allowing the system to eke out every watt of energy saving potential. The project's energy use is 10 times better than the amount of energy allowed by code. The Available Light team was sensitive to both our design goals and to concerns expressed by neighborhood stakeholders.

Even with the complications that can oftentimes arise in a complex endeavor, Available Light stuck by the project through to its successful completion.

Available Light worked with us in a variety of capacities under a very aggressive construction schedule to insure that the final product was the highest quality and artfully blends Architecture, Art and Light into a successful project.

For these reasons, I whole-heartedly support Available Light in the application to you.

Sincerely,



Gregg Spalding, RA LEED AP
Spalding Tougias Architects, Inc.



Teresa Polhemus, Exec. Dir./Secretary
Boston Planning and Development Authority
One City Hall Square, Room 910
Boston, MA 02201

November 30, 2016

RE: Request for Proposals for the Congress St. Bridge Lighting Project

Dear Ms. Polhemus,

On behalf of the Fort Point Neighborhood Association, I am writing you in support of the Congress Street bridge lighting proposal by Available Light and Fort Point artists, Claudia Ravaschiere and Michael Moss.

The bridges crossing the Fort Point Channel are iconic to the identity of our Fort Point neighborhood. We commend the Boston Planning and Development Agency for recognizing their importance and providing a way to illuminate one of the bridges, the Congress Street Bridge, in this unique way.

The Available Light/ Ravaschiere & Moss proposal creates a permanent installation of a popular temporary public art piece, Shimmer, which has delighted residents, business people, tourists, and children crossing the Congress Street Bridge. Shimmer uses multicolored acrylic panels suspended within the bridge support railings to project multi-colored hues across the sidewalk on the bridge. The reflection on the sidewalk and water below starts conversations and elicits sighs of appreciation. In the hustle and bustle of city life, it has caused people to stop and take a moment to recognize where they are and the beauty surrounding them. Shimmer has been photographed numerous times, trending on social media and as one social media contributor said "It is hard not to enjoy Shimmer."

In collaboration with Available Light, Shimmer will be able to shine day and night. The combined expertise and reputation of Available Light and Ravaschiere & Moss will expand and transform how we view the Fort Point Channel. It will commemorate the maritime history of Fort Point's industrial bridges and the revitalization of the Fort Point neighborhood by artists over 35 years ago.

Thank you for your consideration of this remarkable proposal.

Sincerely,

Sara D. McCammond

The FPNA is dedicated to enhancing and preserving the quality of life in our community, to broadening citizen awareness and participation within our growing neighborhood, and to building a socially interactive civic life in Fort Point.

Teresa Polhemus, Exec. Dir./Secretary
Boston Planning and Development Authority
One City Hall Square, Room 910
Boston MA

November 28, 2016

Dear Ms. Polhemus,

As a longtime resident of the Fort Point neighborhood of South Boston, I am pleased to support the proposal of Available Light with artists Claudia Ravaschiere and Michael Moss in response to the Request for Proposals for the Congress St. Bridge Lighting Project issued by the Boston Planning and Development Agency.

Over the thirty years I have lived in Fort Point, I have seen remarkable transformation with the nation's largest intact collection of 19th century industrial buildings preserved, restored and reused to host the vibrant mixed use neighborhood that it is today. Residents, workforce, artists, hotels, museums and many restaurants and bars, all activate Fort Point day and night. The Congress St Bridge with its handsome historic architecture spanning the Fort Point Channel is an important pedestrian, biking and vehicle connection and merits an important and landmark lighting treatment.

An experienced firm, Available Light knows Fort Point and is responsible for the award winning lighting installation at the Channel Center garage, located between A Street and the South Boston Bypass Road. In this proposal, they are partnering to make "Shimmer", a beloved temporary public art installation by Claudia Ravaschiere and Michael Moss, into a permanent installation, turning the entire Congress St bridge into a piece of public art as it is illuminated as an historic structure. "Shimmer" with its translucent colored panels fixed to the south side of the railing on the bridge has grown from a few panels in 2015 to extend from Dorchester Ave to the Harborwalk in 2016. With its colorful reflections on the sidewalk and on the water surface, children and adults alike have delighted in its daytime playfulness, taking photos to try and capture its beauty and sharing these all summer long via social media.

With this proposal, "Shimmer" will grow once again with a night time presence as Available Light combines its lighting design experience and technical expertise with programmable lighting elements to bring the beauty and excitement of "Shimmer" into the night time as it celebrates the historic bridge architecture with an exuberant piece of public art. Fort Point, and Boston, have come to know and love "Shimmer". As a neighborhood, and as a city, we honor our history. This is an important opportunity to combine the two into a bold, beautiful unique installation for the Congress St. Bridge. I urge you to support this remarkable project.

Sincerely,

Valerie Burns

249 A Street, Boston, 02210

857-891-3191

APPENDIX



CERTIFICATE OF LIABILITY INSURANCE

DATE (MM/DD/YYYY)
11/23/2016

THIS CERTIFICATE IS ISSUED AS A MATTER OF INFORMATION ONLY AND CONFERS NO RIGHTS UPON THE CERTIFICATE HOLDER. THIS CERTIFICATE DOES NOT AFFIRMATIVELY OR NEGATIVELY AMEND, EXTEND OR ALTER THE COVERAGE AFFORDED BY THE POLICIES BELOW. THIS CERTIFICATE OF INSURANCE DOES NOT CONSTITUTE A CONTRACT BETWEEN THE ISSUING INSURER(S), AUTHORIZED REPRESENTATIVE OR PRODUCER, AND THE CERTIFICATE HOLDER.

IMPORTANT: If the certificate holder is an ADDITIONAL INSURED, the policy(ies) must be endorsed. If SUBROGATION IS WAIVED, subject to the terms and conditions of the policy, certain policies may require an endorsement. A statement on this certificate does not confer rights to the certificate holder in lieu of such endorsement(s).

PRODUCER Tarpey Insurance Group 442 Water St PO BOX 567 Wakefield MA 01880-4667	CONTACT NAME: Corinne Rescigno PHONE (A/C. No. Ext): (781) 246-2677 E-MAIL ADDRESS: corinne@tarpeyinsurance.com	FAX (A/C. No): (781) 224-0973
	INSURER(S) AFFORDING COVERAGE	
INSURED AVAILABLE LIGHT INC 10 DERBY SQ #3 SALEM MA 01970	INSURER A: Citizens NAIC # 31534	
	INSURER B: Darwin Select Insurance Company	
	INSURER C:	
	INSURER D:	
	INSURER E:	

COVERAGES

CERTIFICATE NUMBER: 16 Liab

REVISION NUMBER:

THIS IS TO CERTIFY THAT THE POLICIES OF INSURANCE LISTED BELOW HAVE BEEN ISSUED TO THE INSURED NAMED ABOVE FOR THE POLICY PERIOD INDICATED. NOTWITHSTANDING ANY REQUIREMENT, TERM OR CONDITION OF ANY CONTRACT OR OTHER DOCUMENT WITH RESPECT TO WHICH THIS CERTIFICATE MAY BE ISSUED OR MAY PERTAIN, THE INSURANCE AFFORDED BY THE POLICIES DESCRIBED HEREIN IS SUBJECT TO ALL THE TERMS, EXCLUSIONS AND CONDITIONS OF SUCH POLICIES. LIMITS SHOWN MAY HAVE BEEN REDUCED BY PAID CLAIMS.

INSR LTR	TYPE OF INSURANCE	ADDL INSD	SUBR WVD	POLICY NUMBER	POLICY EFF (MM/DD/YYYY)	POLICY EXP (MM/DD/YYYY)	LIMITS
A	<input checked="" type="checkbox"/> COMMERCIAL GENERAL LIABILITY <input type="checkbox"/> CLAIMS-MADE <input checked="" type="checkbox"/> OCCUR GEN'L AGGREGATE LIMIT APPLIES PER: <input checked="" type="checkbox"/> POLICY <input type="checkbox"/> PRO-JECT <input type="checkbox"/> LOC OTHER:			OBNA242148	3/23/2016	3/23/2017	EACH OCCURRENCE \$ 1,000,000 DAMAGE TO RENTED PREMISES (Ea occurrence) \$ 300,000 MED EXP (Any one person) \$ 10,000 PERSONAL & ADV INJURY \$ 1,000,000 GENERAL AGGREGATE \$ 2,000,000 PRODUCTS - COMP/OP AGG \$ 2,000,000 Non-owned \$ 1,000,000
A	AUTOMOBILE LIABILITY <input type="checkbox"/> ANY AUTO <input type="checkbox"/> ALL OWNED AUTOS <input checked="" type="checkbox"/> HIRED AUTOS <input type="checkbox"/> SCHEDULED AUTOS <input checked="" type="checkbox"/> NON-OWNED AUTOS			OBNA242148	3/23/2016	3/23/2017	COMBINED SINGLE LIMIT (Ea accident) \$ 1,000,000 BODILY INJURY (Per person) \$ BODILY INJURY (Per accident) \$ PROPERTY DAMAGE (Per accident) \$ \$
A	<input checked="" type="checkbox"/> UMBRELLA LIAB <input checked="" type="checkbox"/> OCCUR <input type="checkbox"/> EXCESS LIAB <input type="checkbox"/> CLAIMS-MADE DED RETENTION \$			OBNA242148	3/23/2016	3/23/2017	EACH OCCURRENCE \$ 1,000,000 AGGREGATE \$ \$
A	WORKERS COMPENSATION AND EMPLOYERS' LIABILITY ANY PROPRIETOR/PARTNER/EXECUTIVE OFFICER/MEMBER EXCLUDED? (Mandatory in NH) If yes, describe under DESCRIPTION OF OPERATIONS below	Y/N	N/A	W2NA242147 01	3/23/2016	3/23/2017	<input checked="" type="checkbox"/> PER STATUTE <input type="checkbox"/> OTH-ER E.L. EACH ACCIDENT \$ 1,000,000 E.L. DISEASE - EA EMPLOYEE \$ 1,000,000 E.L. DISEASE - POLICY LIMIT \$ 1,000,000
B	Professional Liab E&O			03088431	2/22/2016	2/22/2017	E&O Limit \$2,000,000 Retention \$0

DESCRIPTION OF OPERATIONS / LOCATIONS / VEHICLES (ACORD 101, Additional Remarks Schedule, may be attached if more space is required)

CERTIFICATE HOLDER

CANCELLATION

PGAV 200 North Broadway Suite 100 St. Louis, MO 63102	SHOULD ANY OF THE ABOVE DESCRIBED POLICIES BE CANCELLED BEFORE THE EXPIRATION DATE THEREOF, NOTICE WILL BE DELIVERED IN ACCORDANCE WITH THE POLICY PROVISIONS. AUTHORIZED REPRESENTATIVE M Tarpey, CPCU, CIC, AAI
--	---

© 1988-2014 ACORD CORPORATION. All rights reserved.