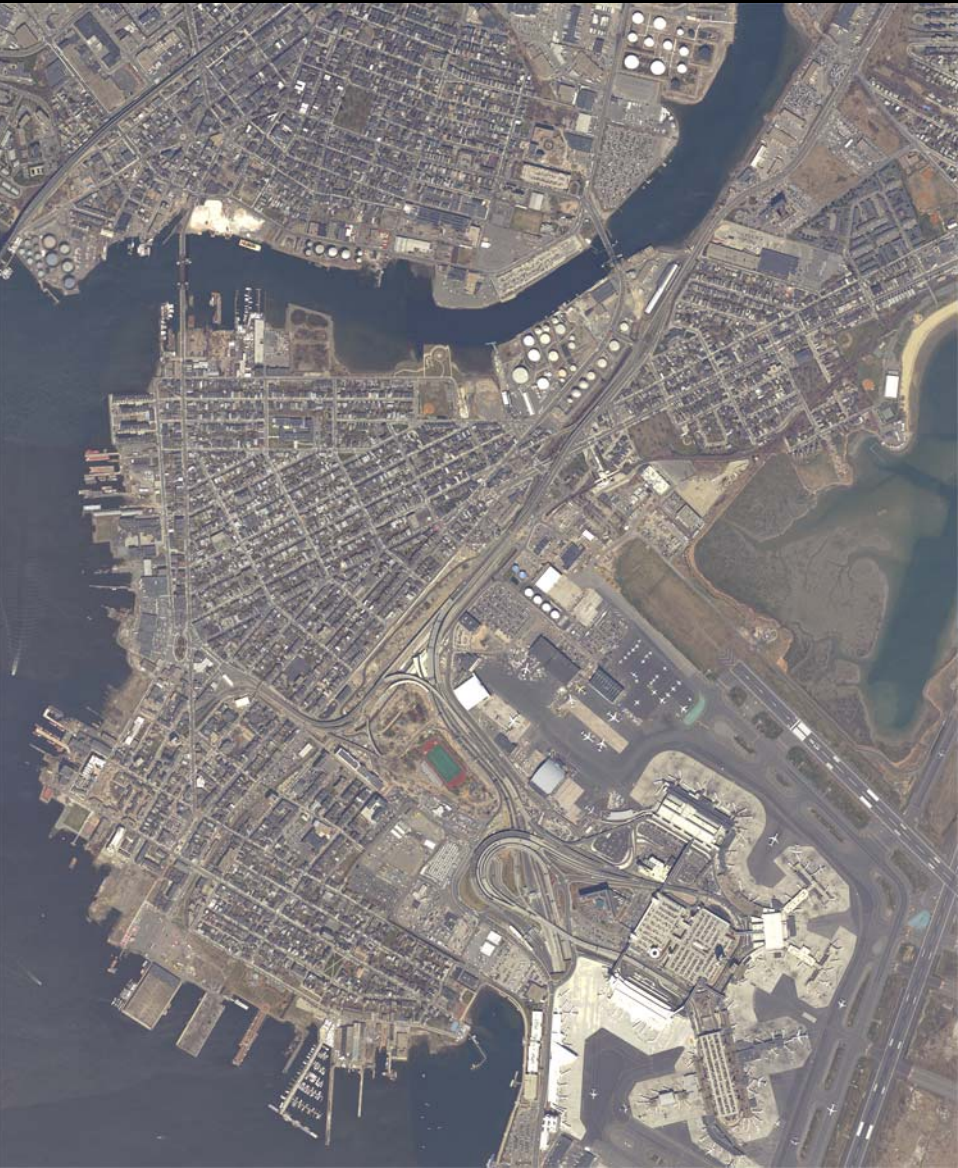
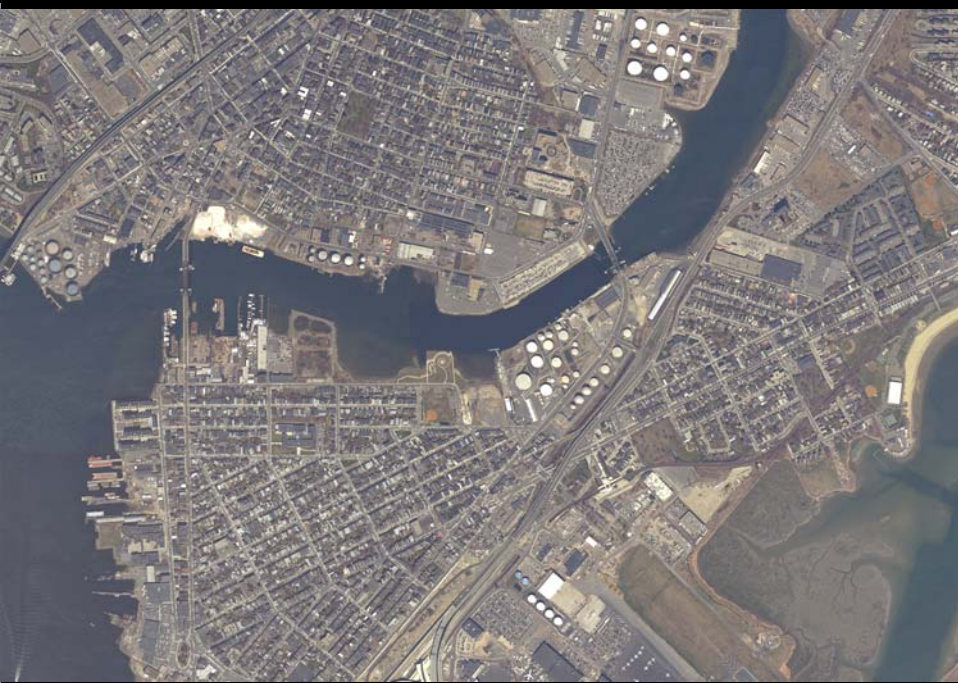
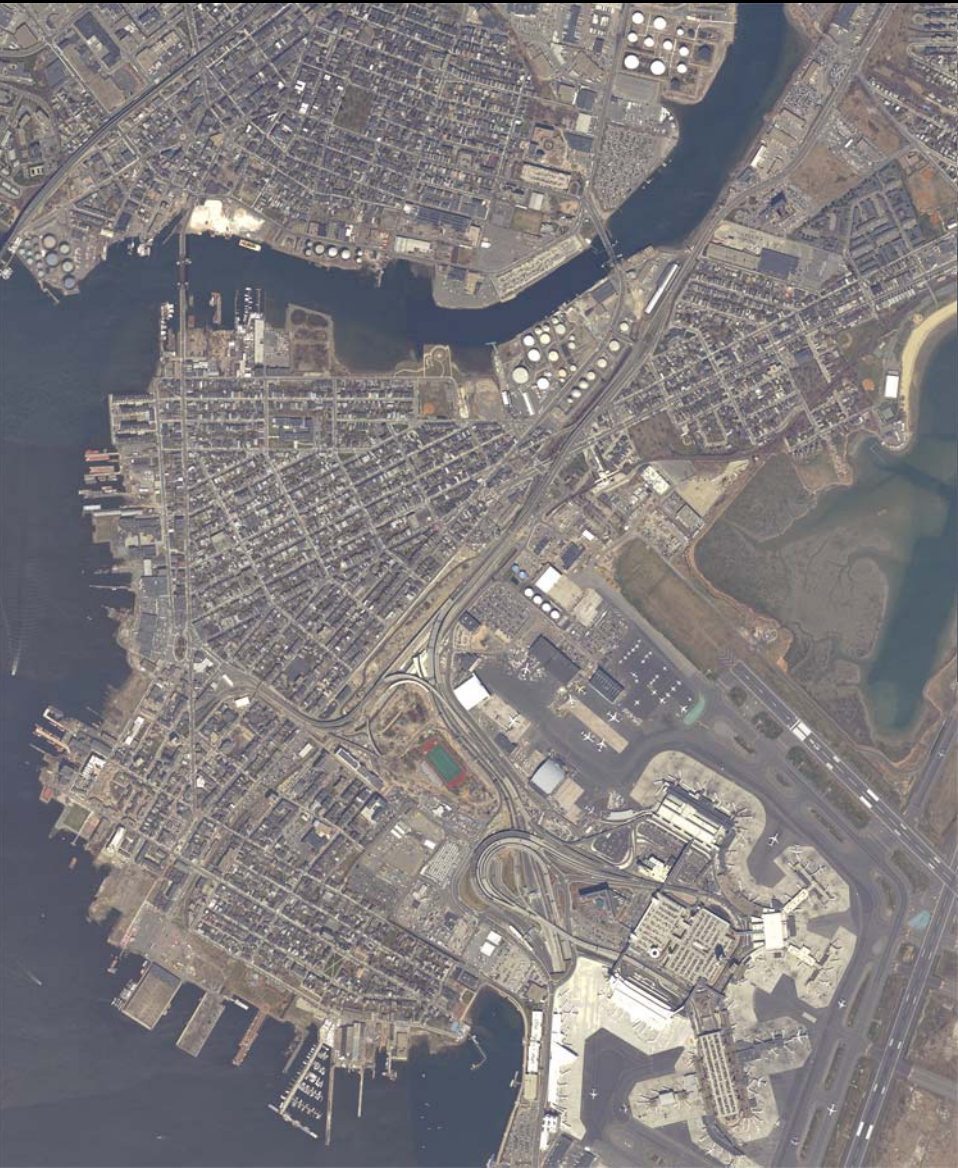


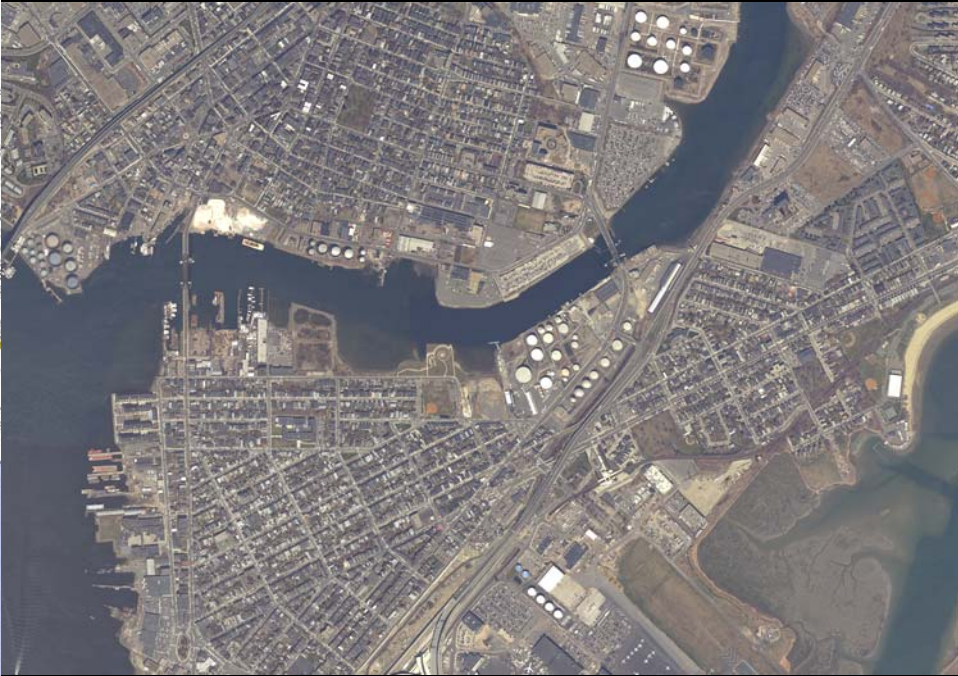
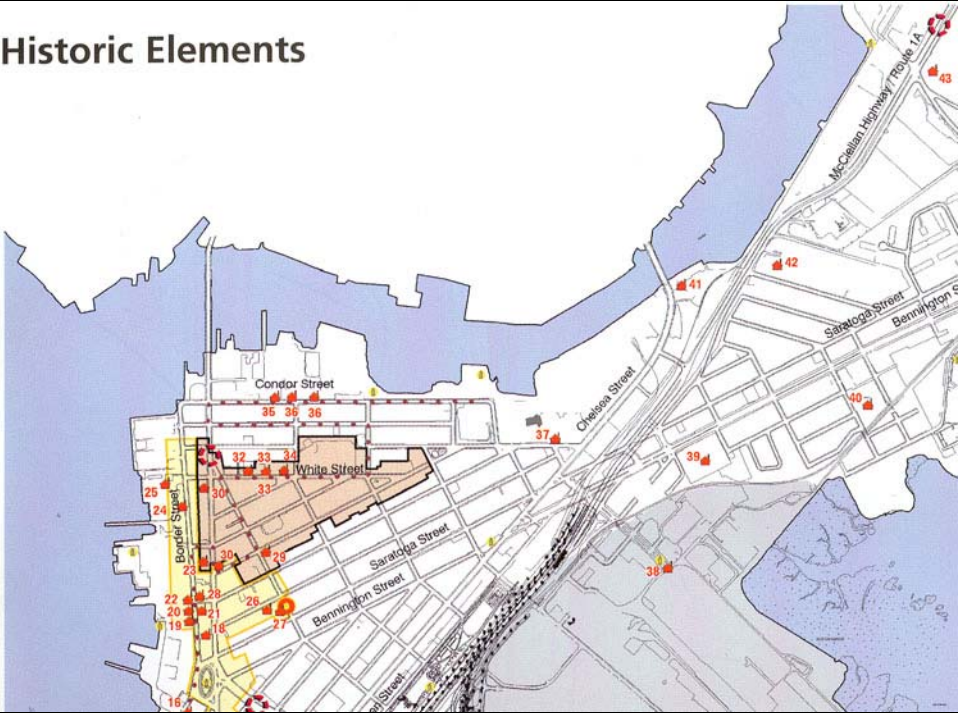
East Boston Waterfront Historical Workshop

The Cecil Group and Nancy S. Seasholes
Harborside Community Center
October 6, 2008

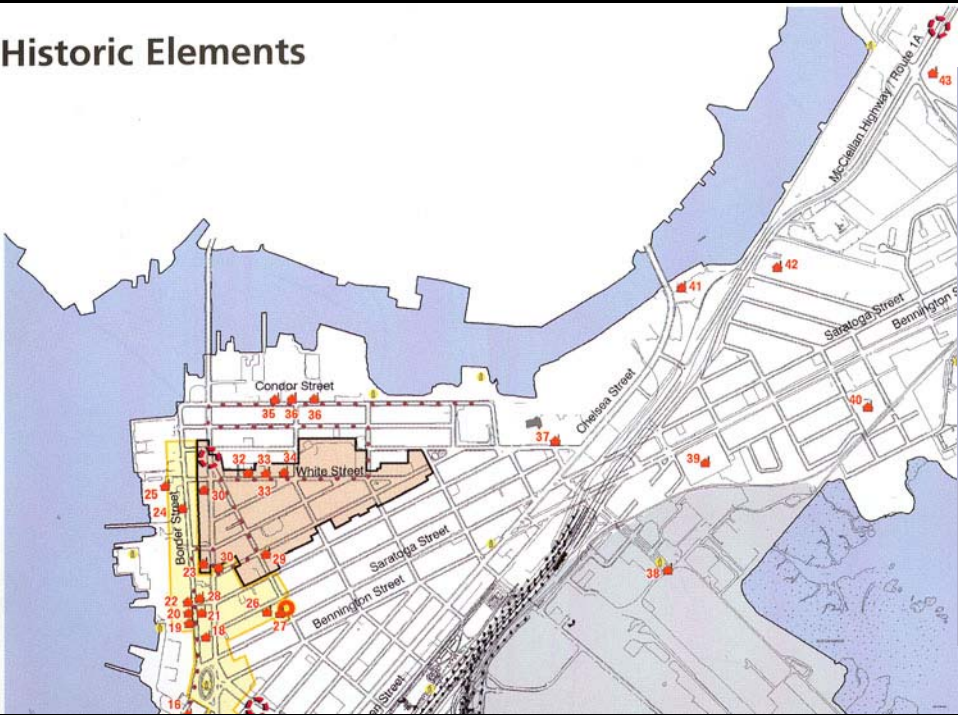


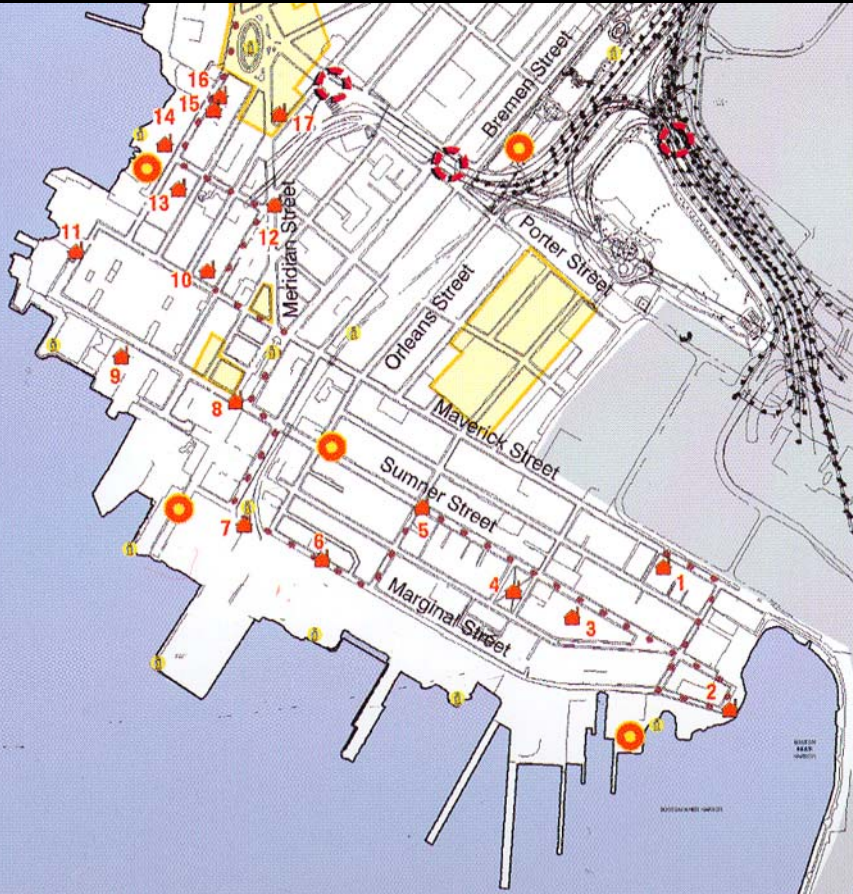


Historic Elements



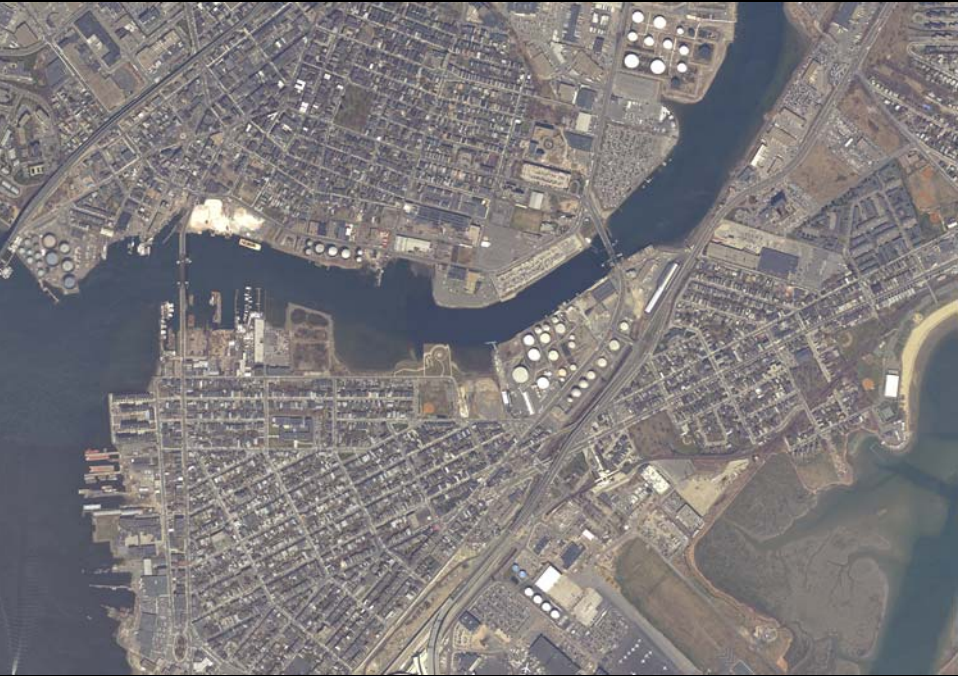
Historic Elements

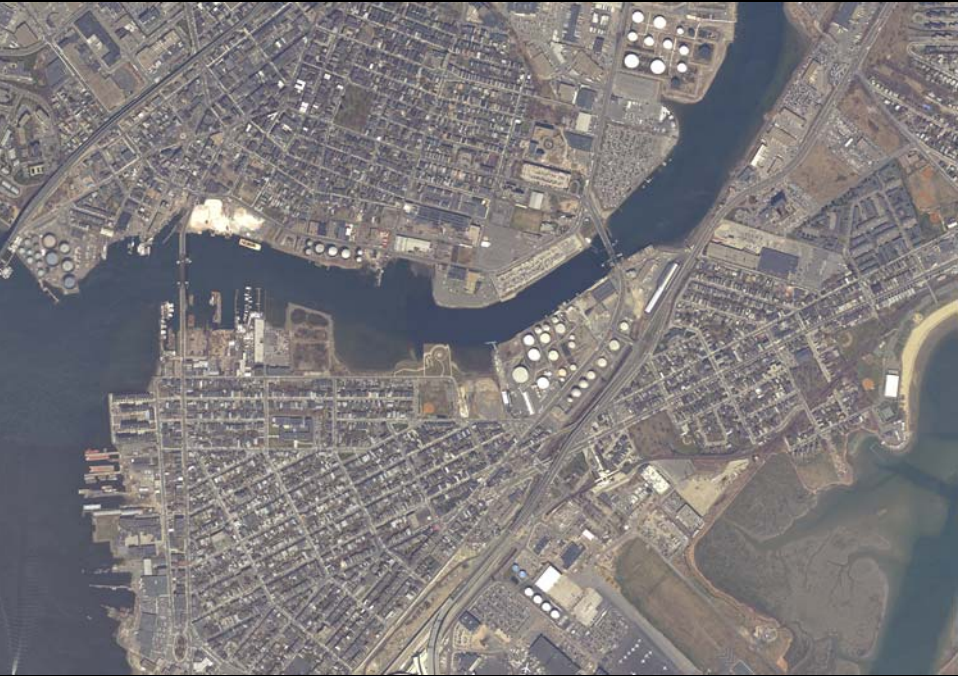




Themes

- I. East Boston History
- II. Shipping (freight and passenger)
- III. Shipbuilding and related industries
- IV. Other industries
- V. Railroads (freight and passenger)
- VI. Ferries and tunnels
- VII. Immigration



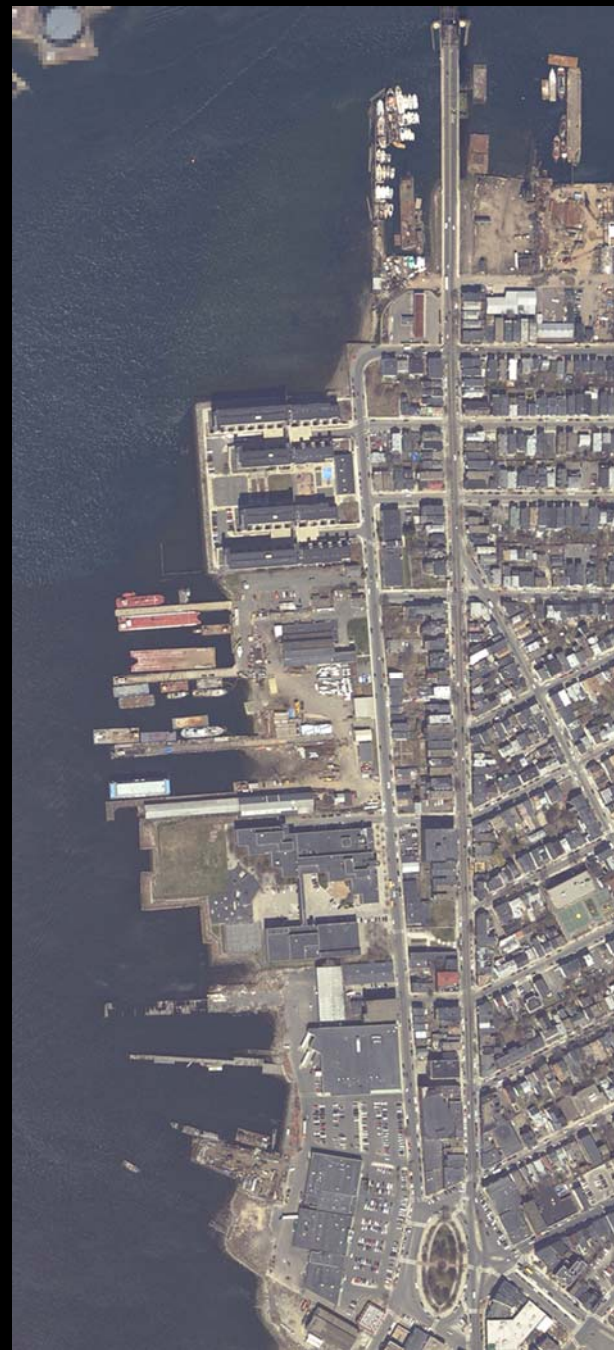


Heritage Trail

Westerbeke Marine
Industries Supplies

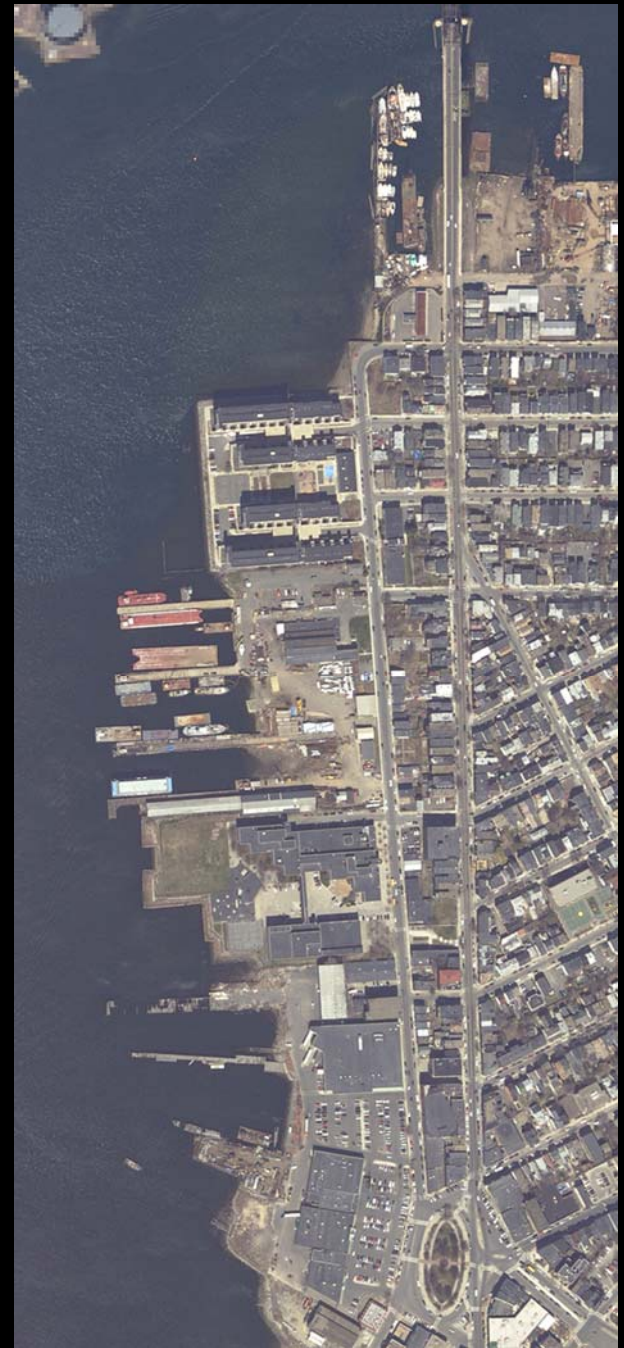
McKay Shipyards

Central East Boston



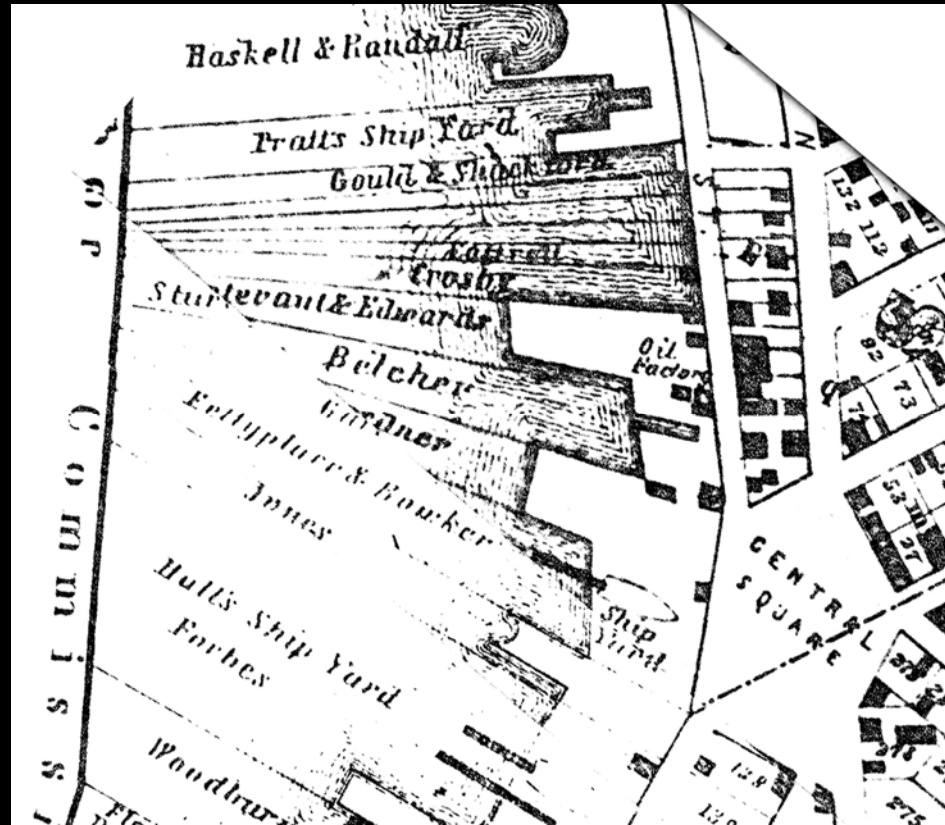


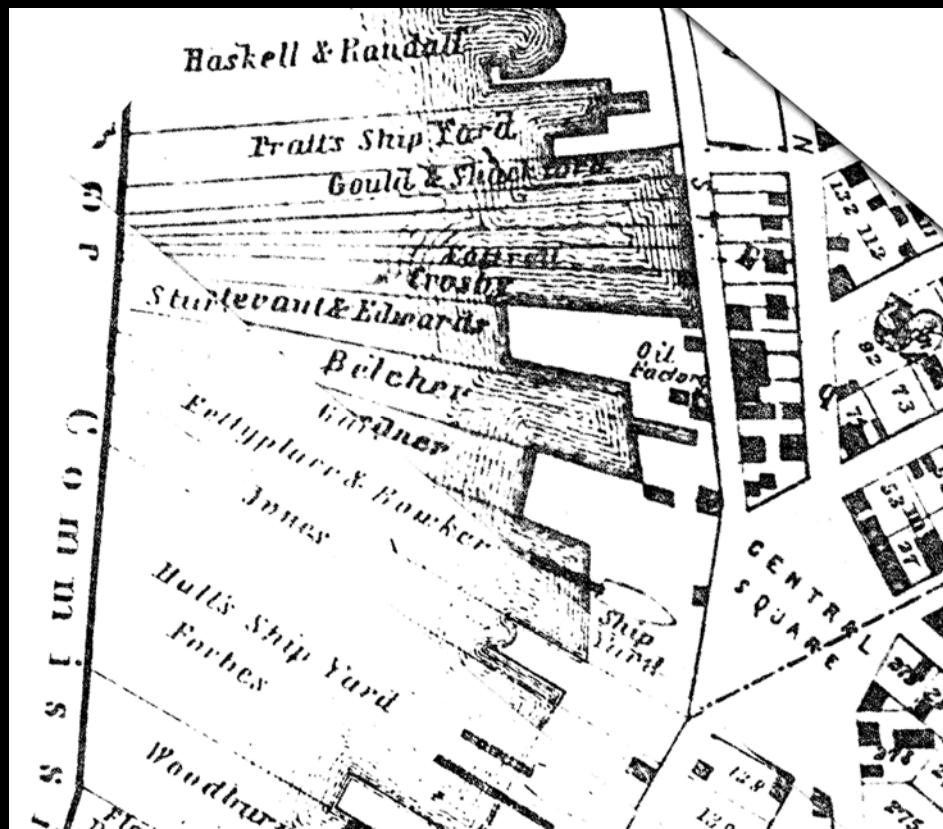
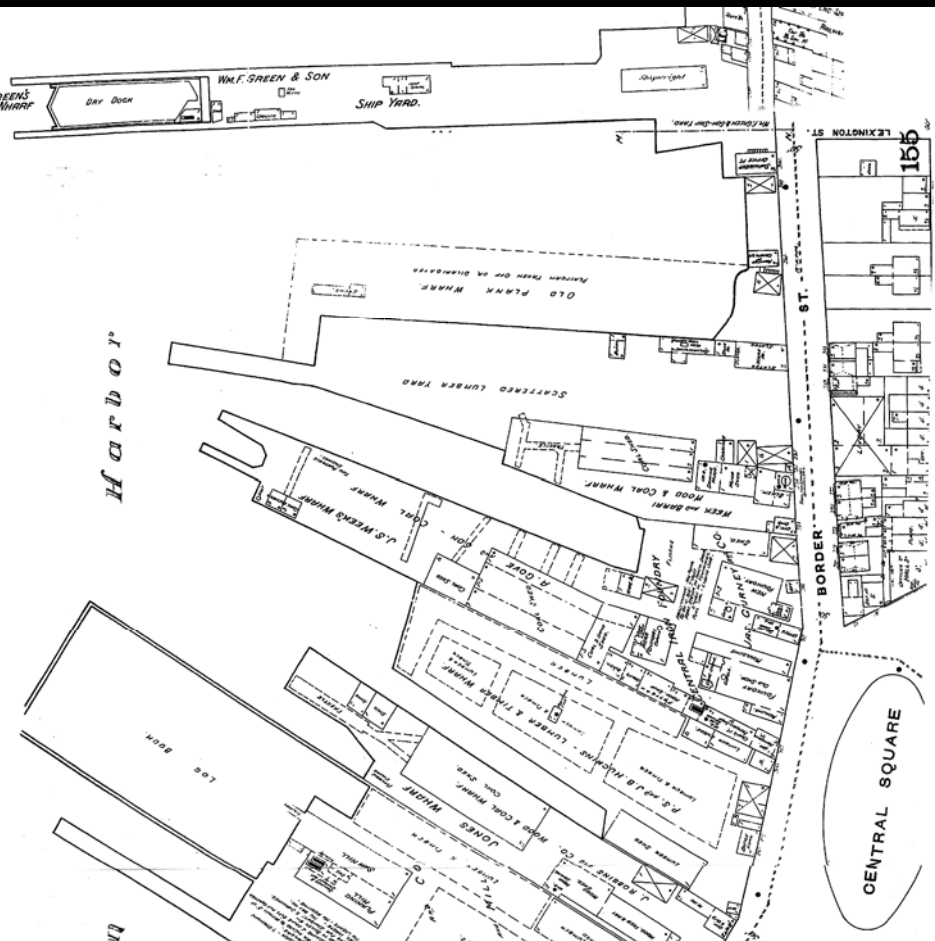


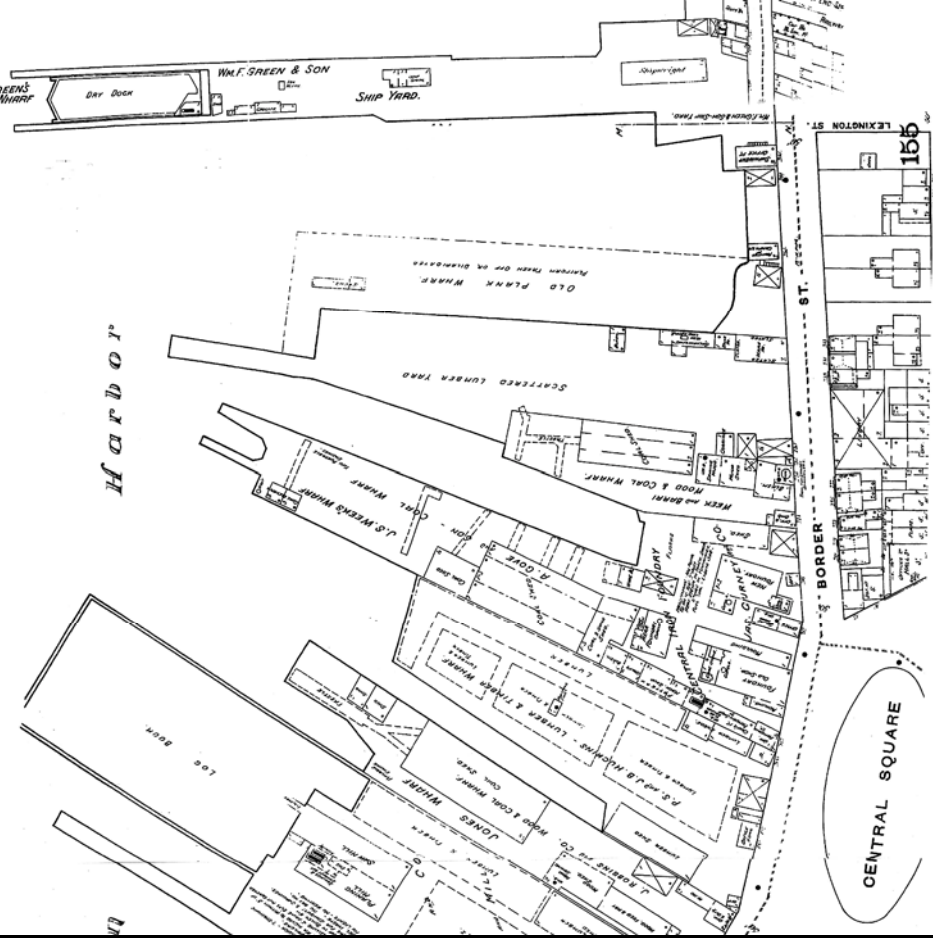


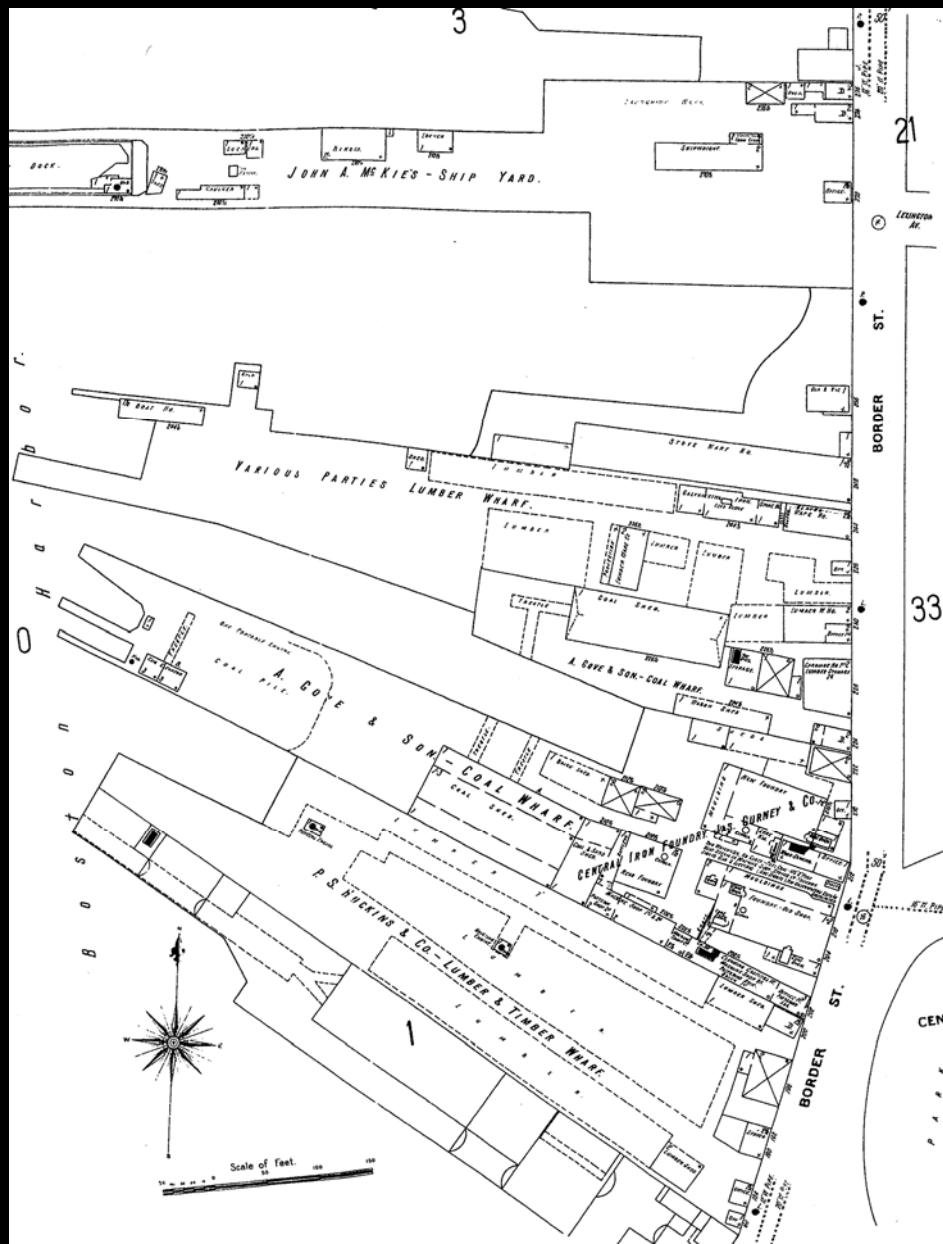
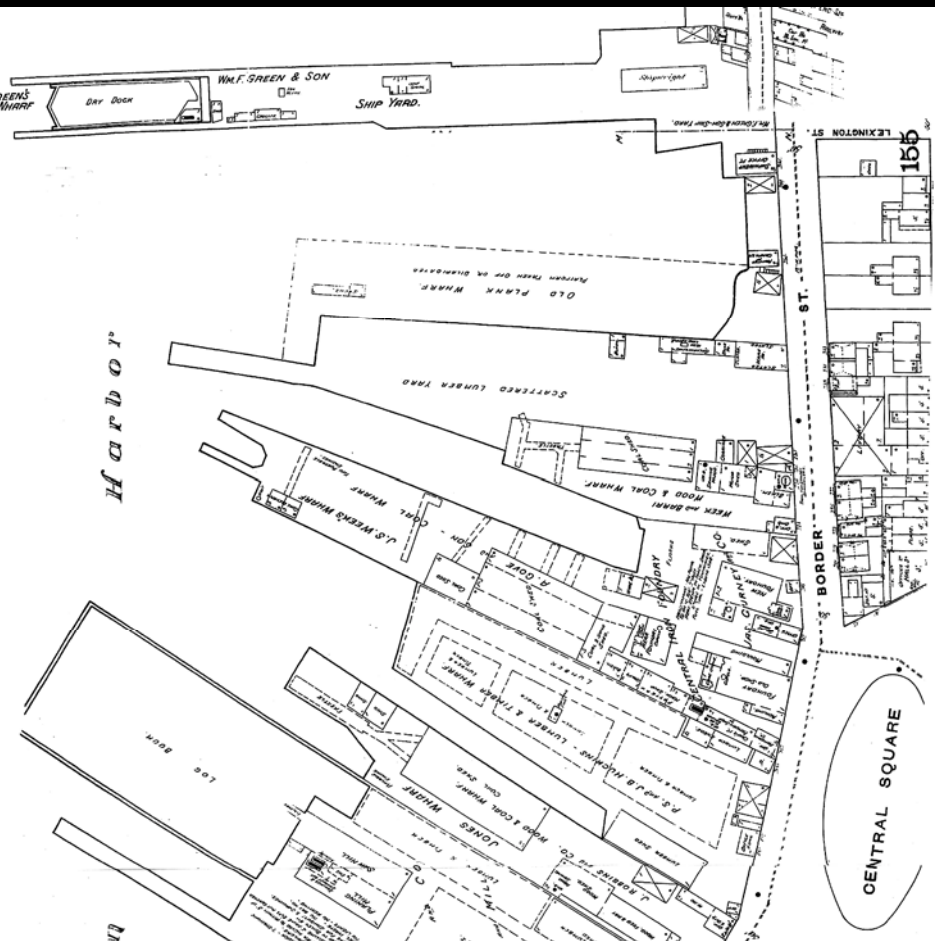


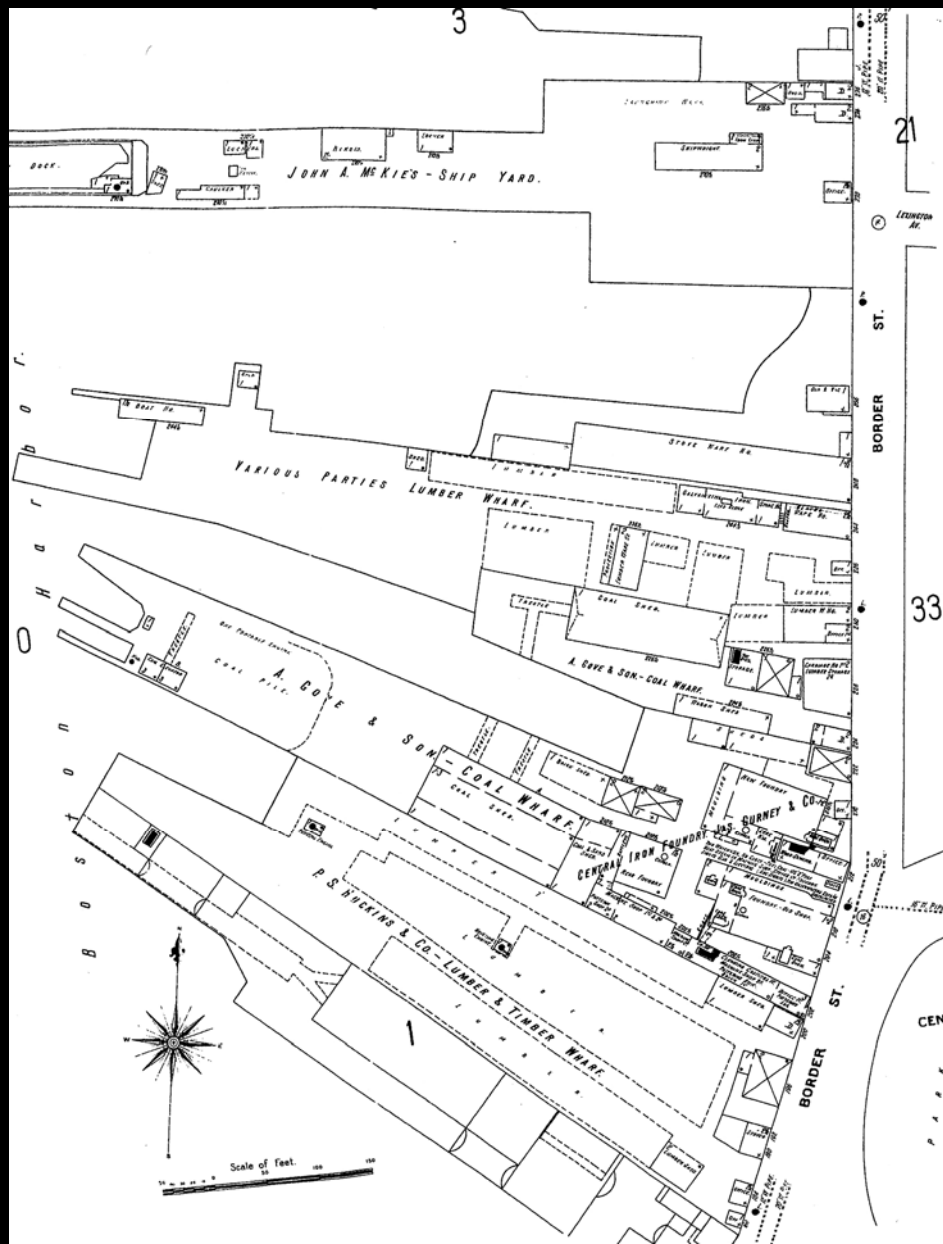
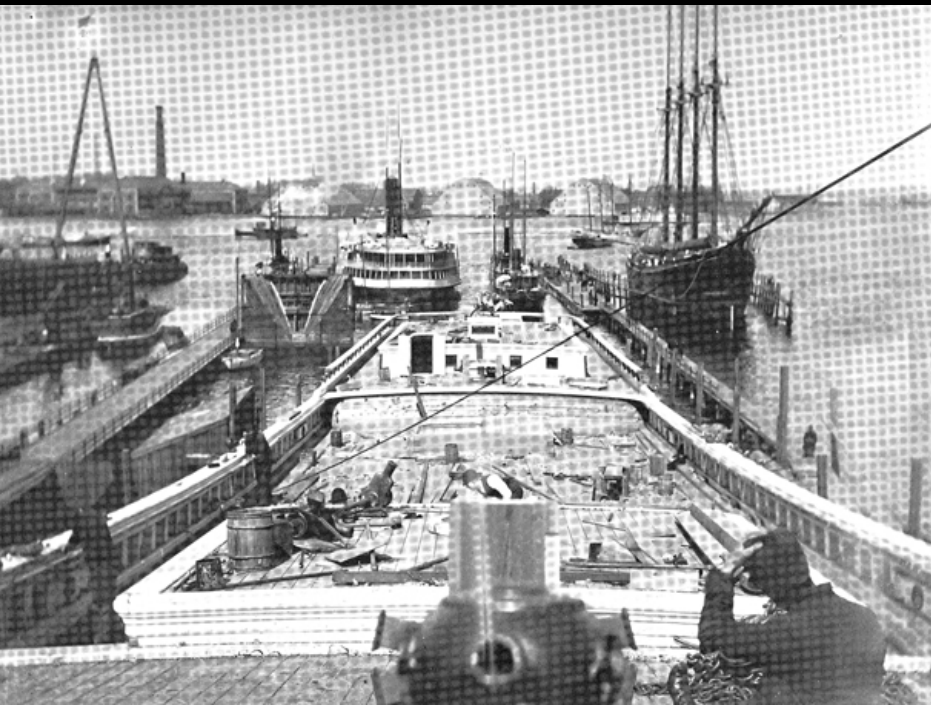


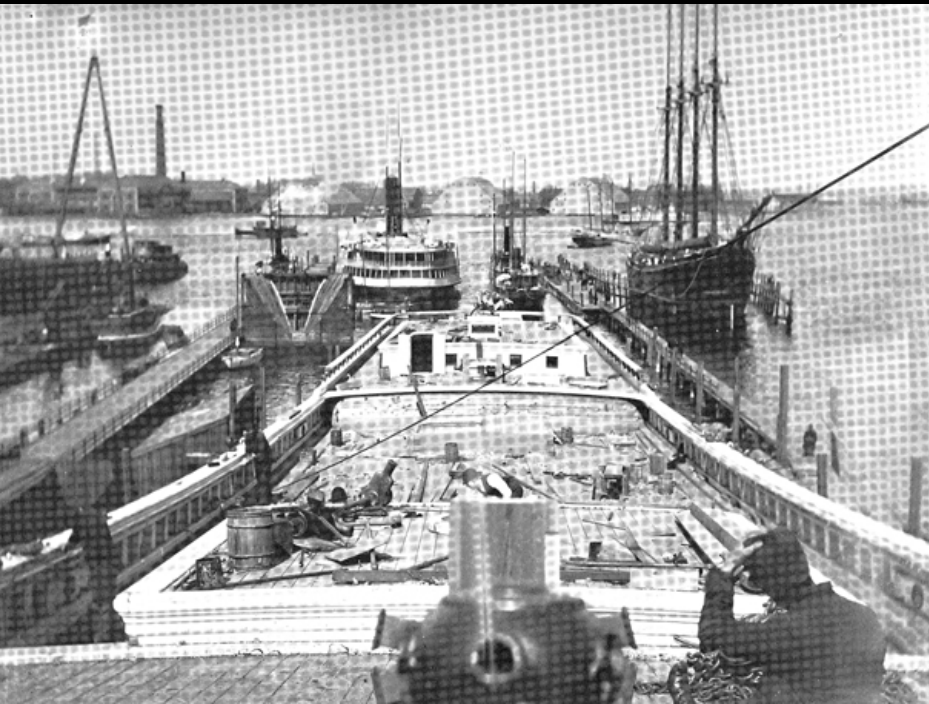






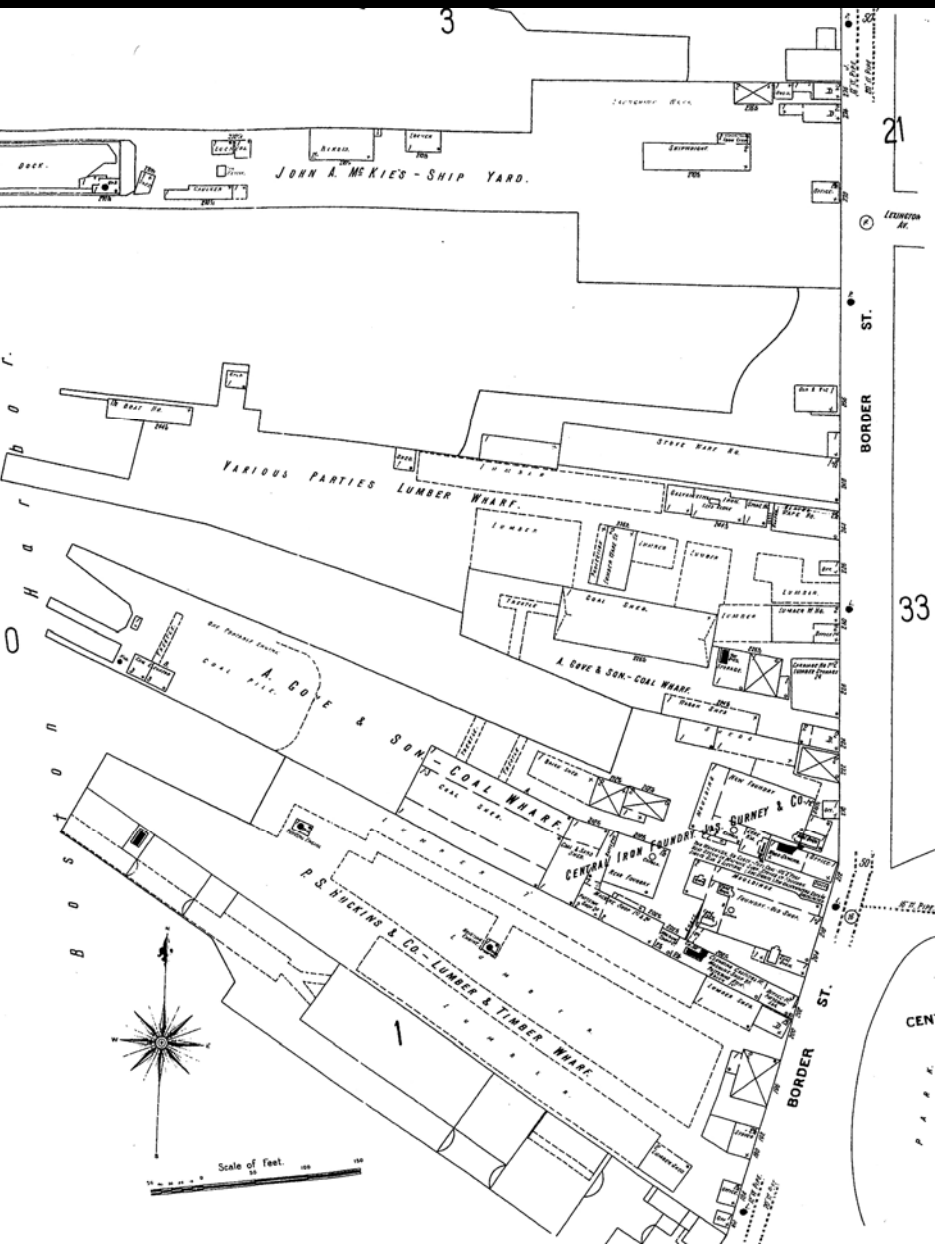


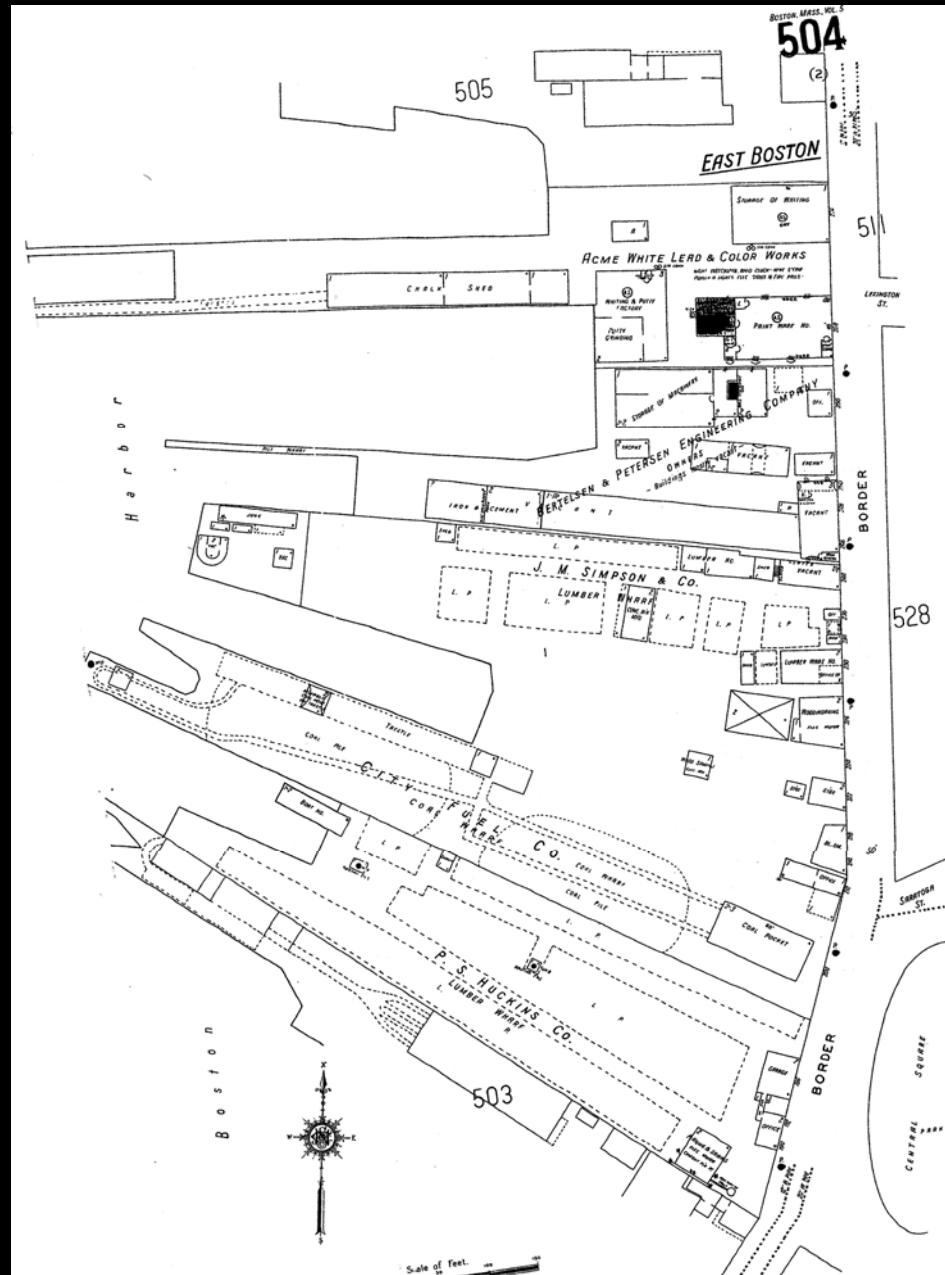
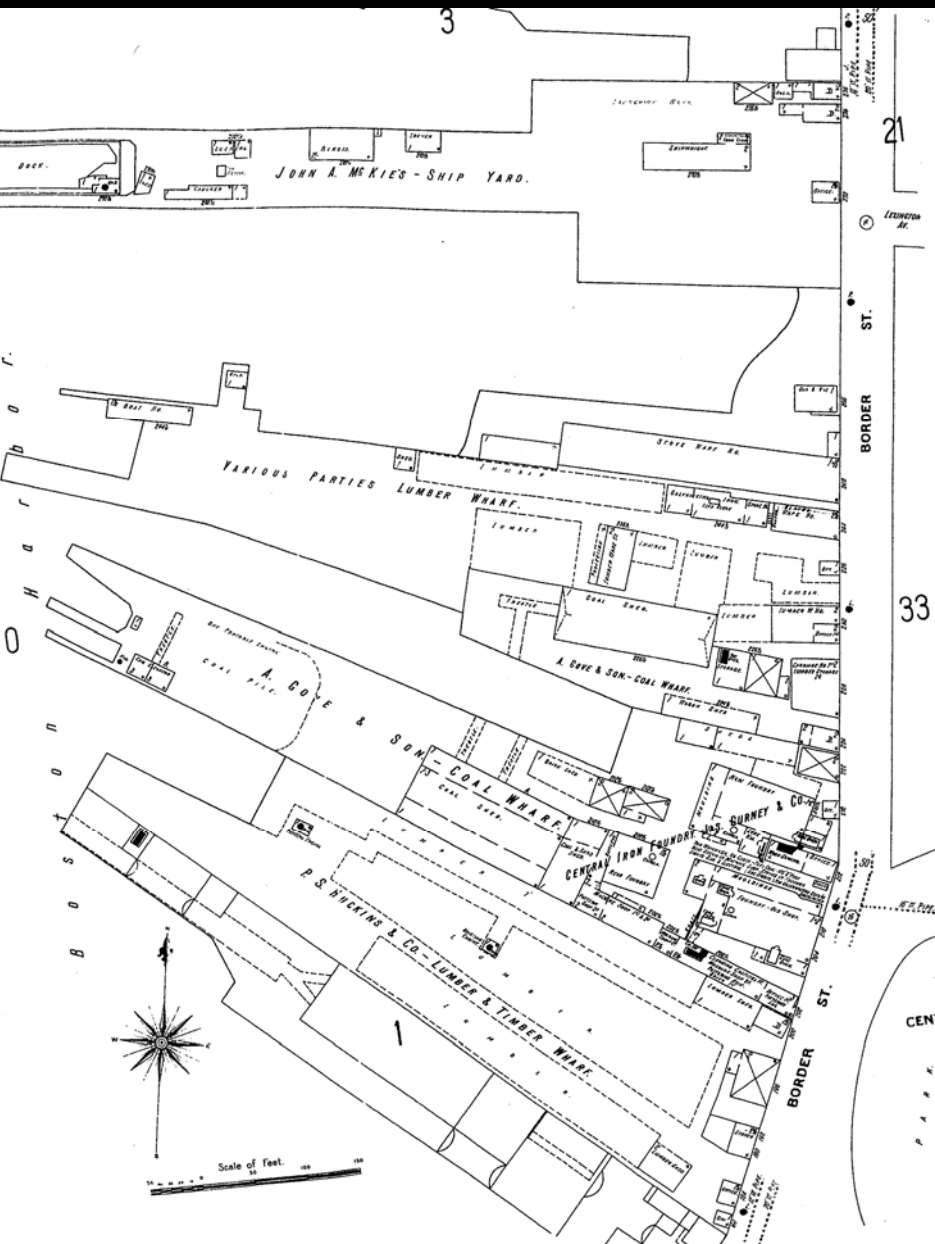


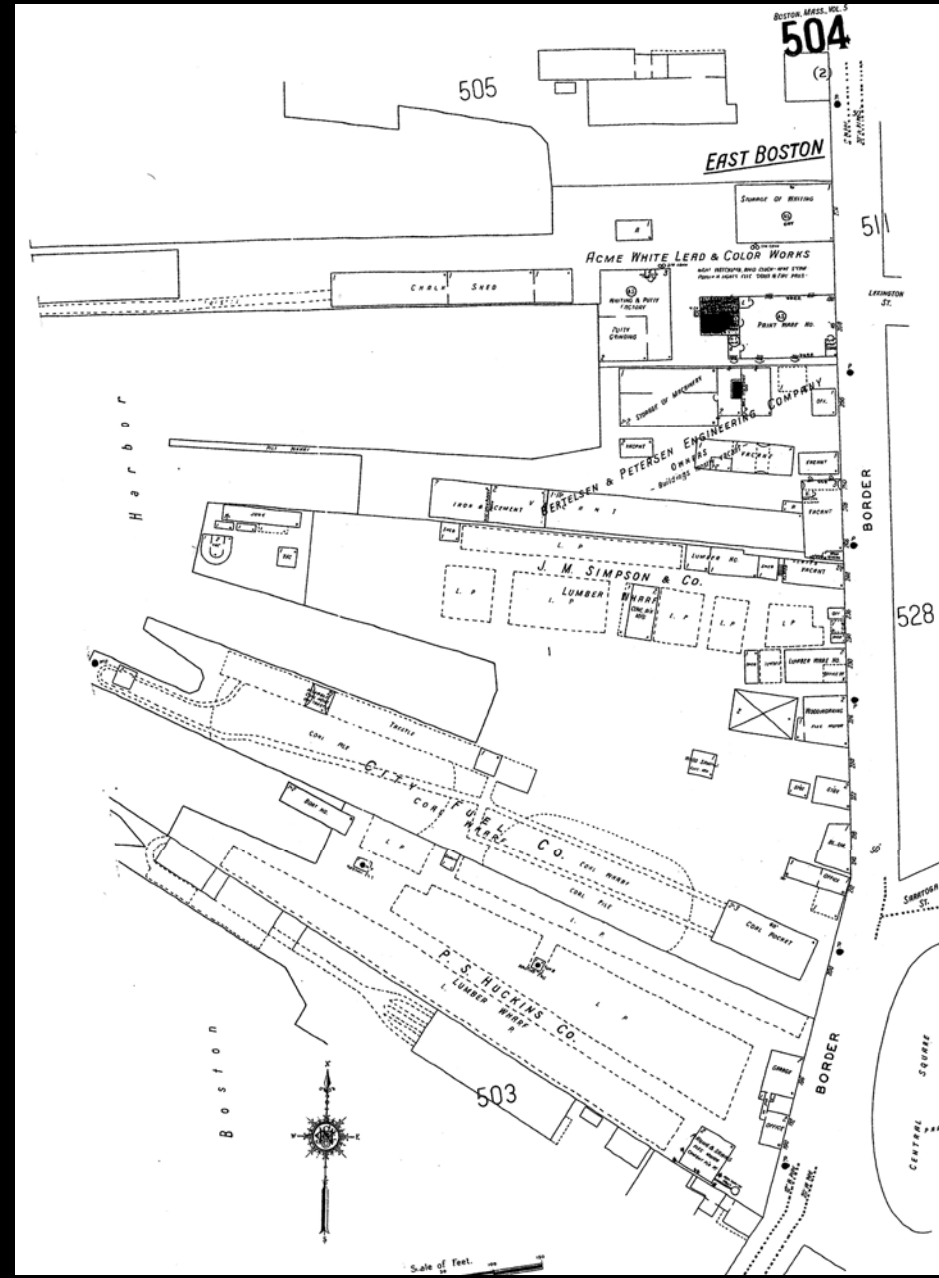
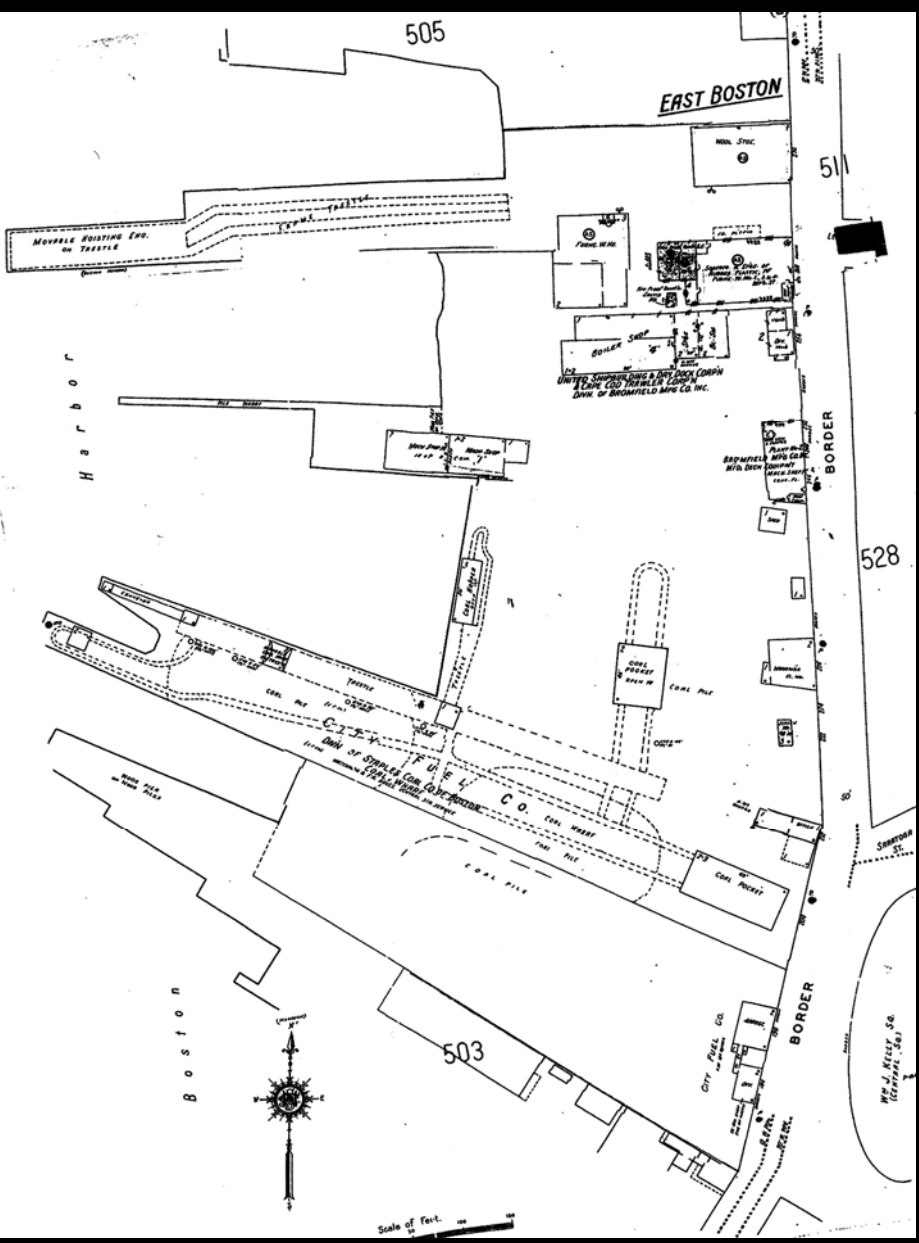


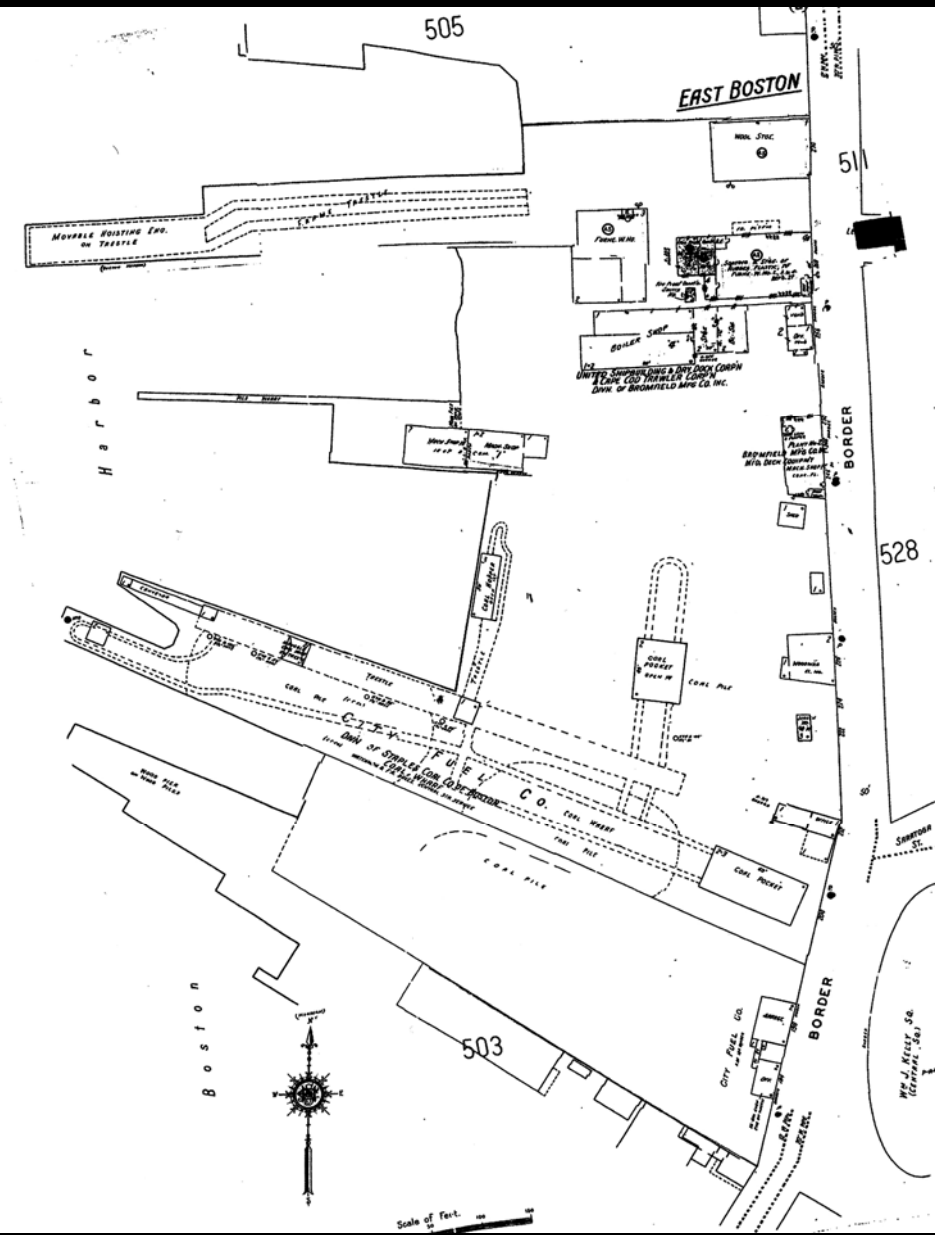










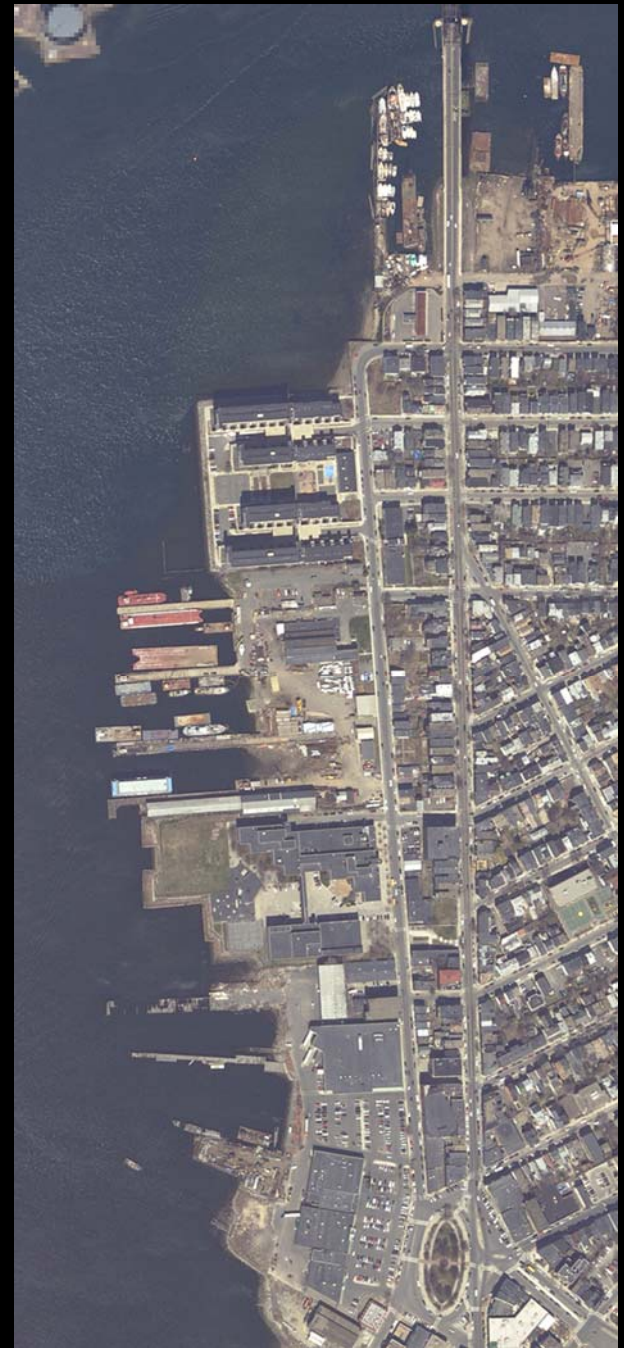


Heritage Trail

Westerbeke Marine
Industries Supplies

McKay Shipyards

Central East Boston

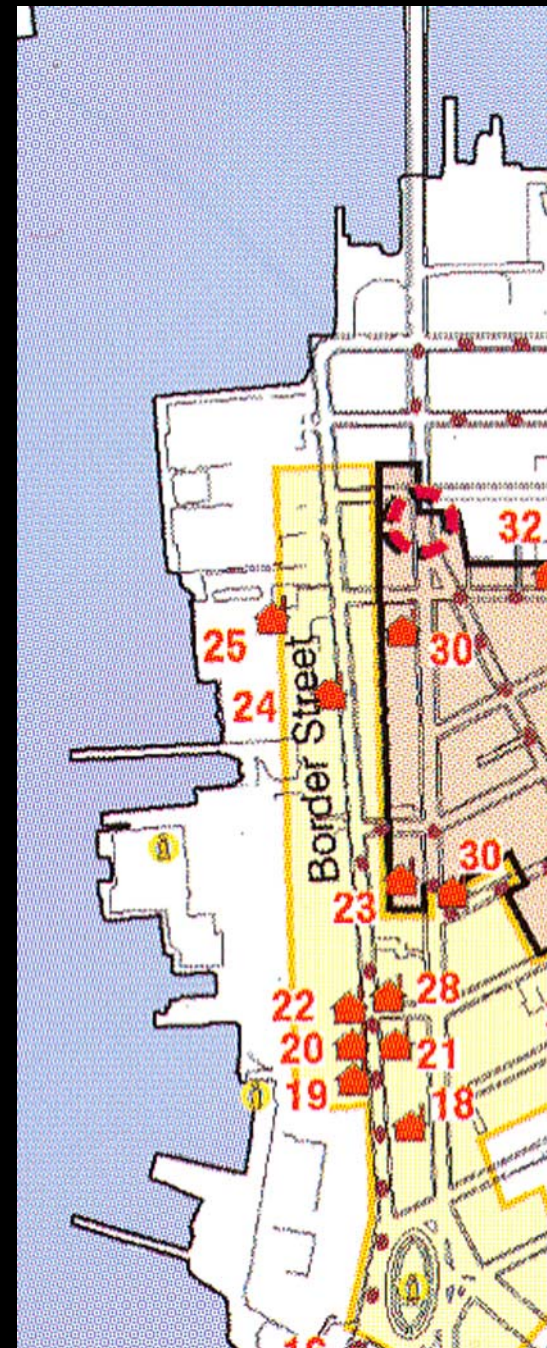


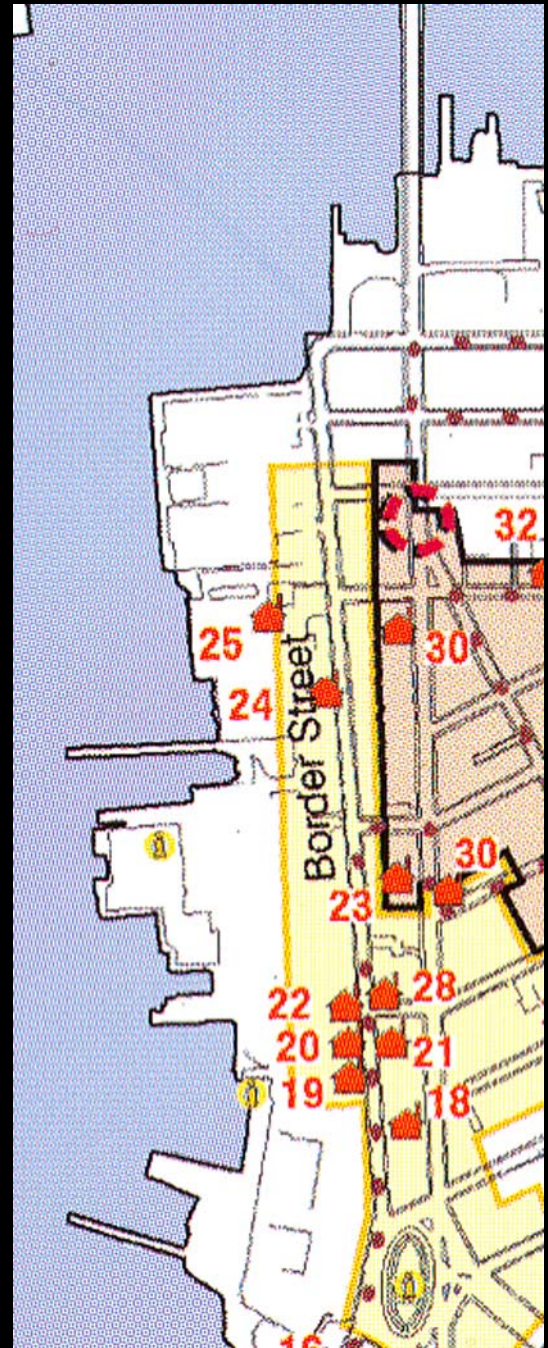
Heritage Trail

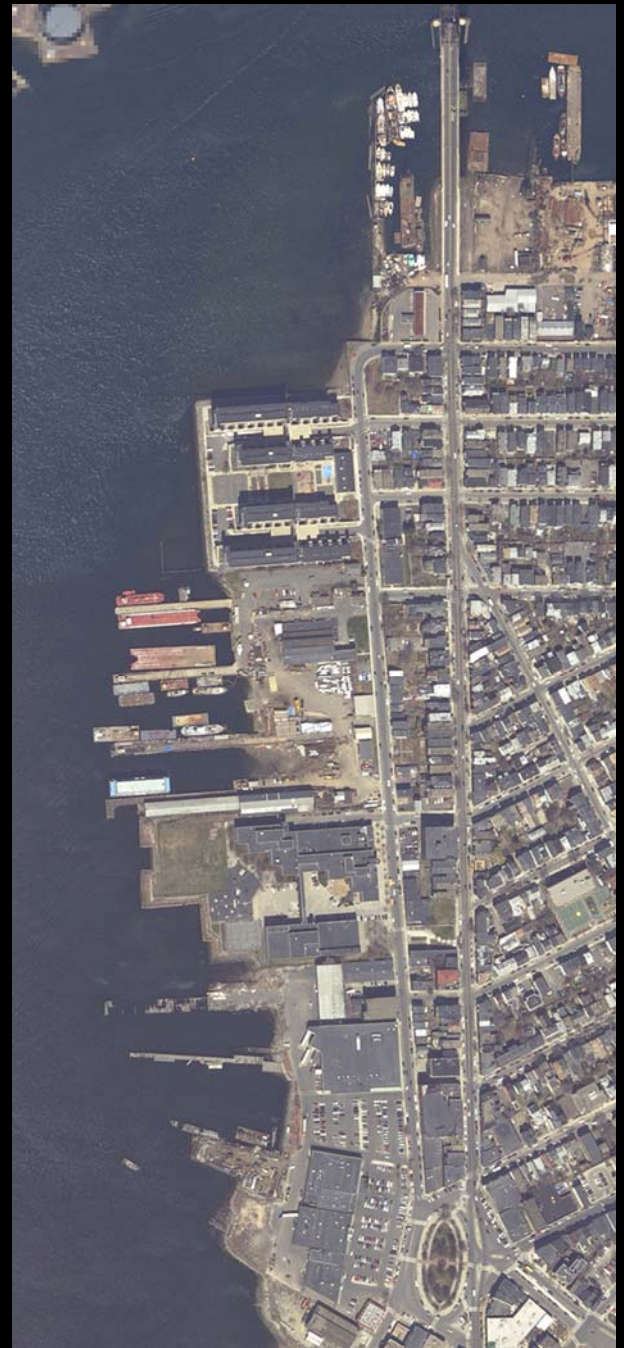
Westerbeke Marine
Industries Supplies

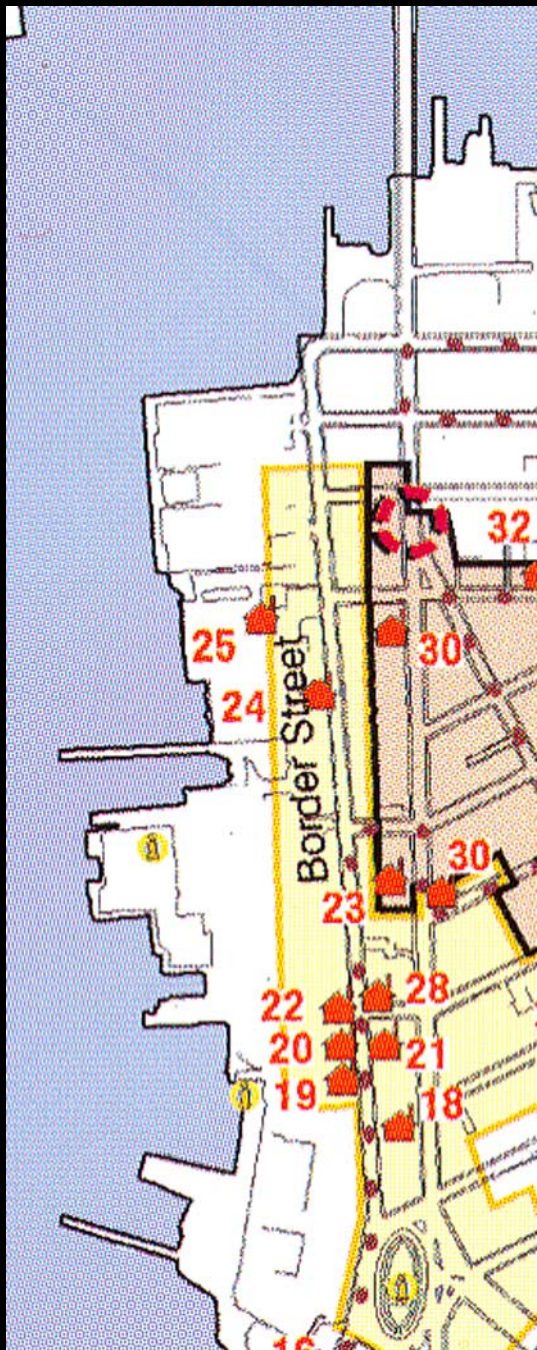
McKay Shipyards

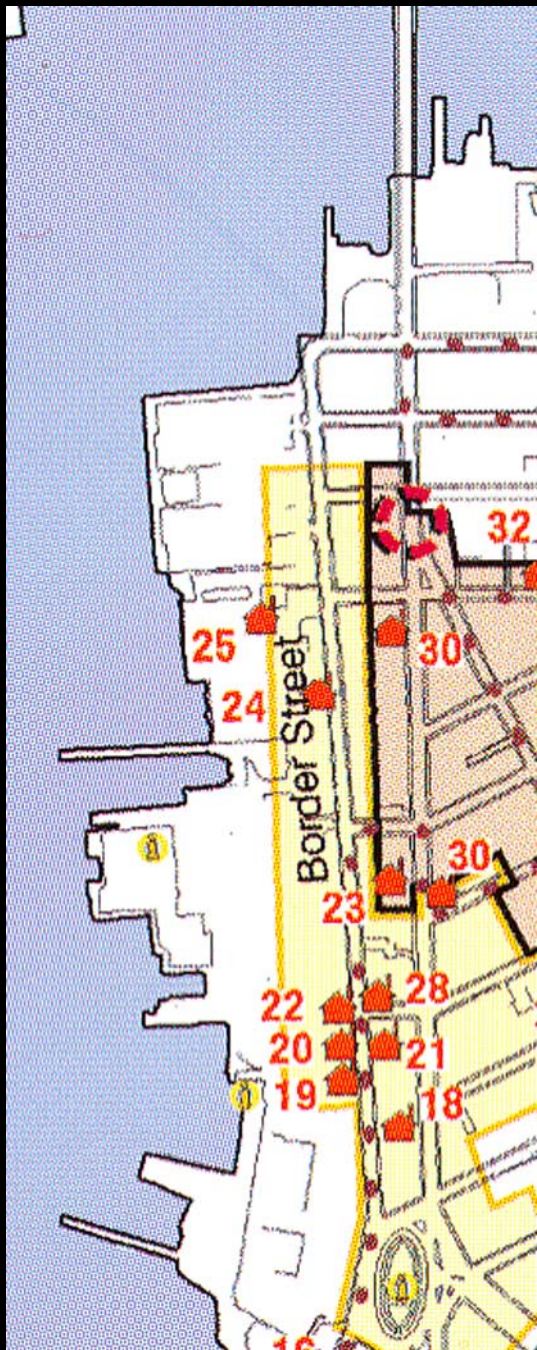
Central East Boston





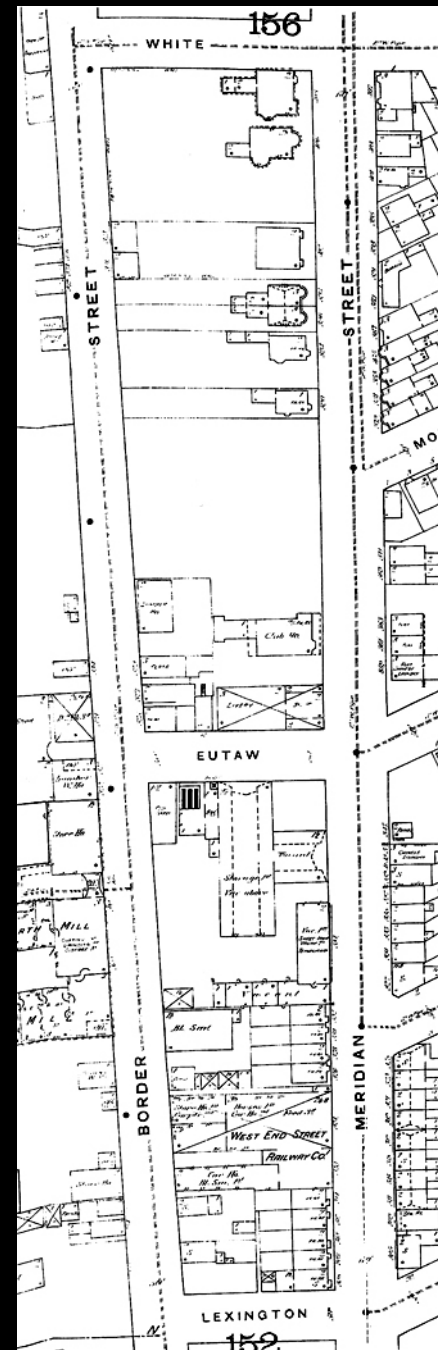


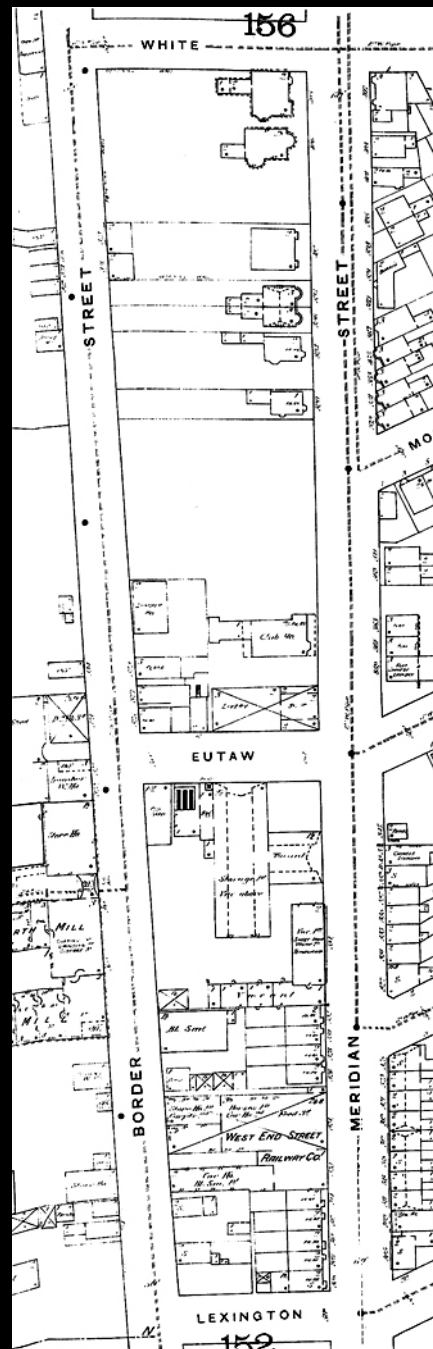
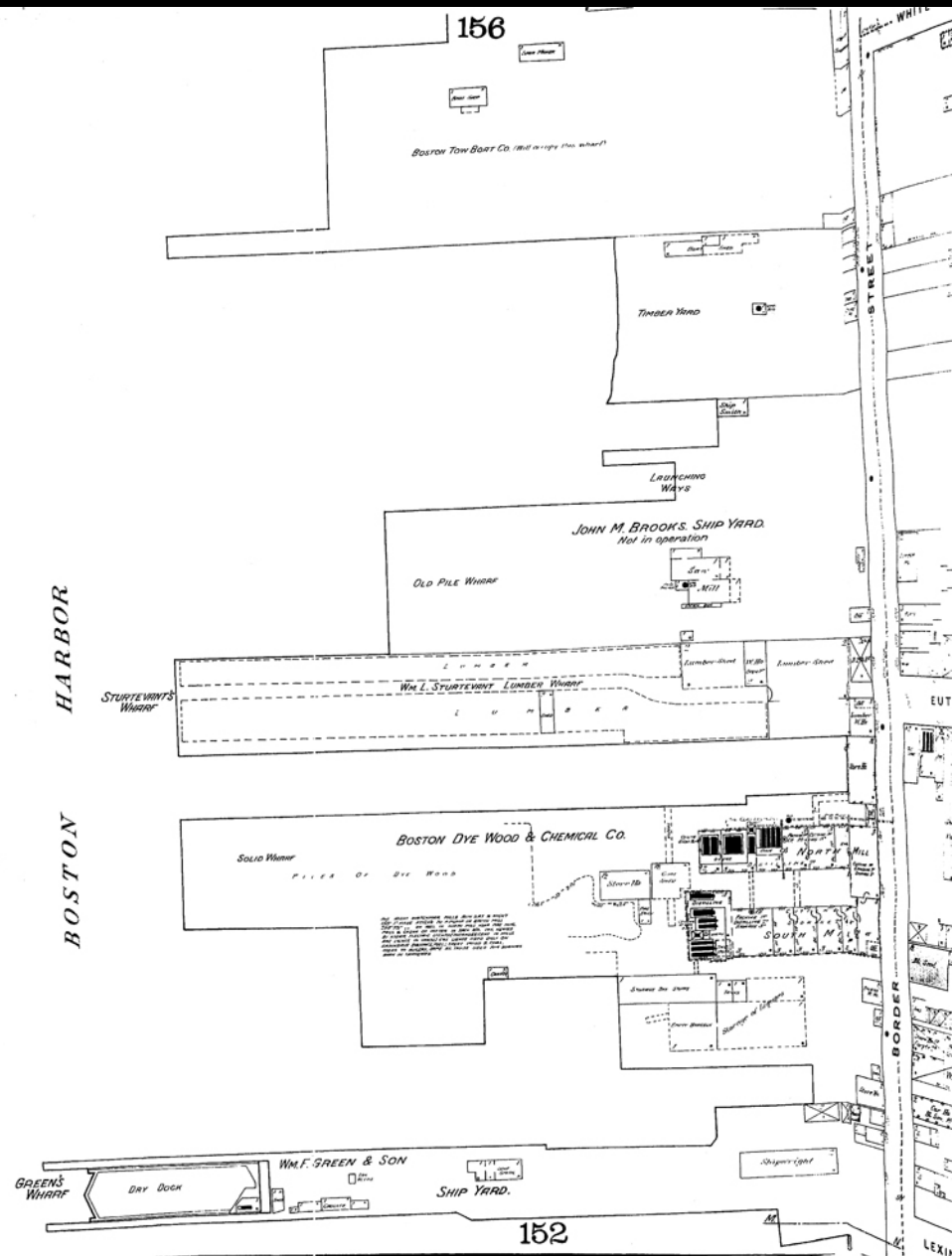


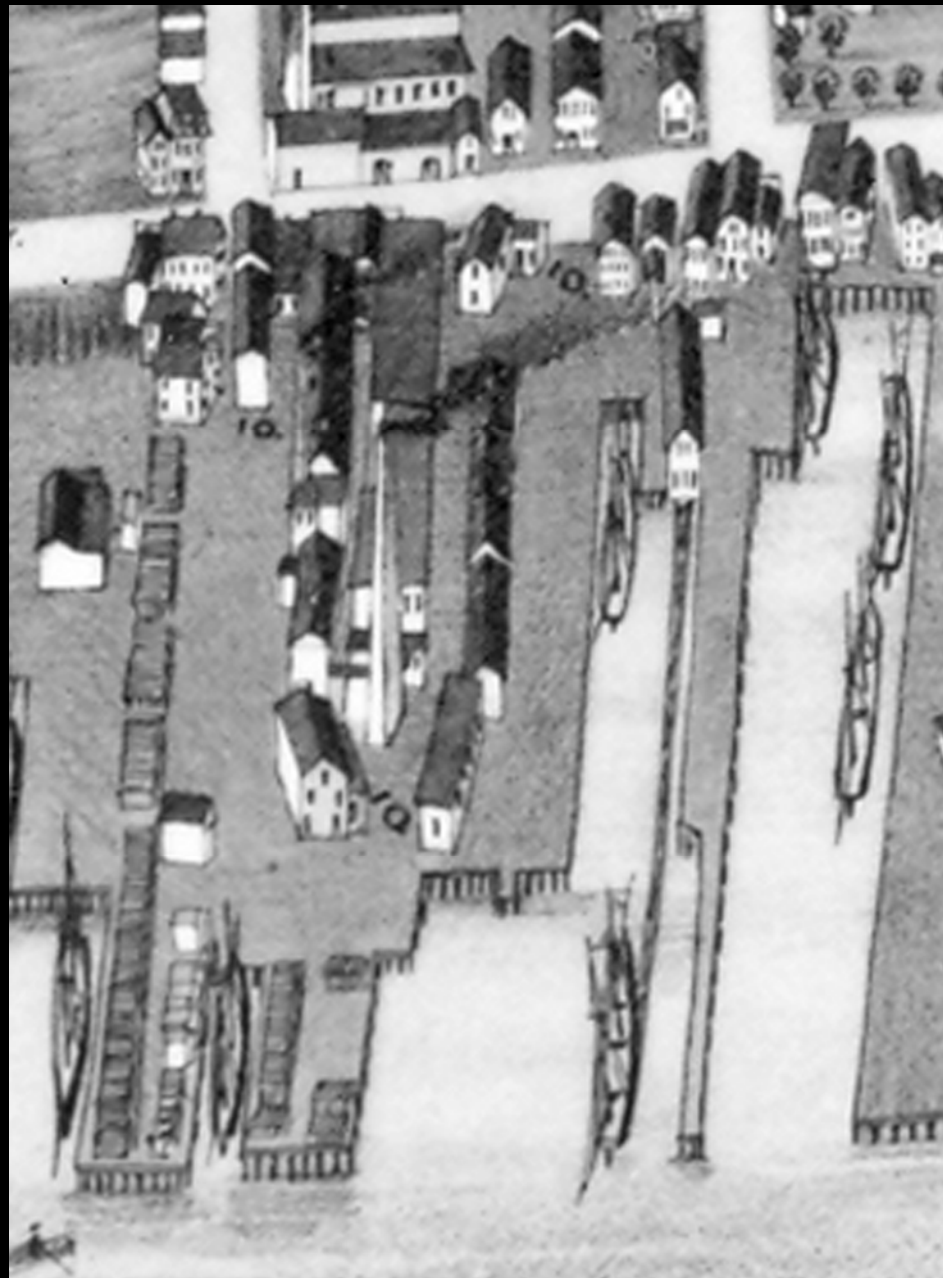
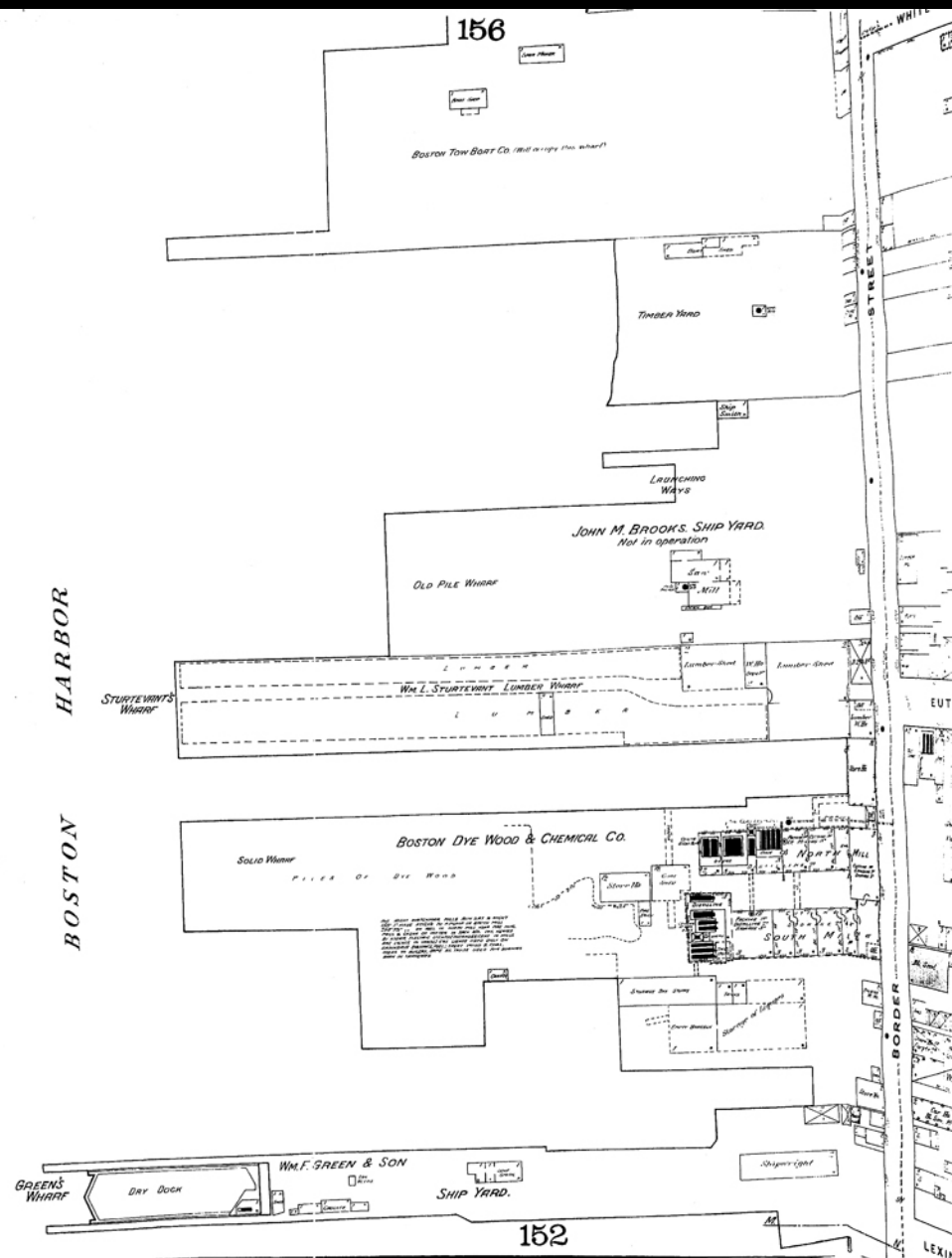












156

Boston Tow Boat Co. (Mill wharf) (See wharf)

Timber Yard

LAUNCHING YARD

JOHN M. BROOKS SHIP YARD
Not in operation

Old Pile Wharf

Wm L. STURTEVANT LUMBER WHARF

BOSTON DYE WOOD & CHEMICAL CO.

Solid Wharf

PILE OF DYE WOOD

WM. F. GREEN & SON

SHIP YARD

152

HARBOR

BOSTON

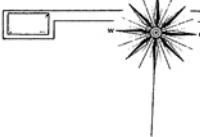
STREET

BORDER

BORDER

LEXI

4



HARBOR

W. F. BROWN & CO'S LUMBER WHARF

LUMBER SHED

WELLMAN HALL & CO. LUMBER WHARF

PILE OF DYE WOOD

SOLID WHARF

NEW YORK & BOSTON DYE WOOD CO

2

Scale of Feet.



50

21

ST.

BORDER

ST.

BORDER

ST.

BORDER

ST.

BORDER

ST.

BORDER

ST.

BORDER

ST.

BORDER

ST.

BORDER

ST.

BORDER

ST.

BORDER

ST.

BORDER

ST.

BORDER

ST.

BORDER

ST.

BORDER

ST.

BORDER

ST.

BORDER

ST.

BORDER

ST.

BORDER

ST.

BORDER

ST.

BORDER

ST.

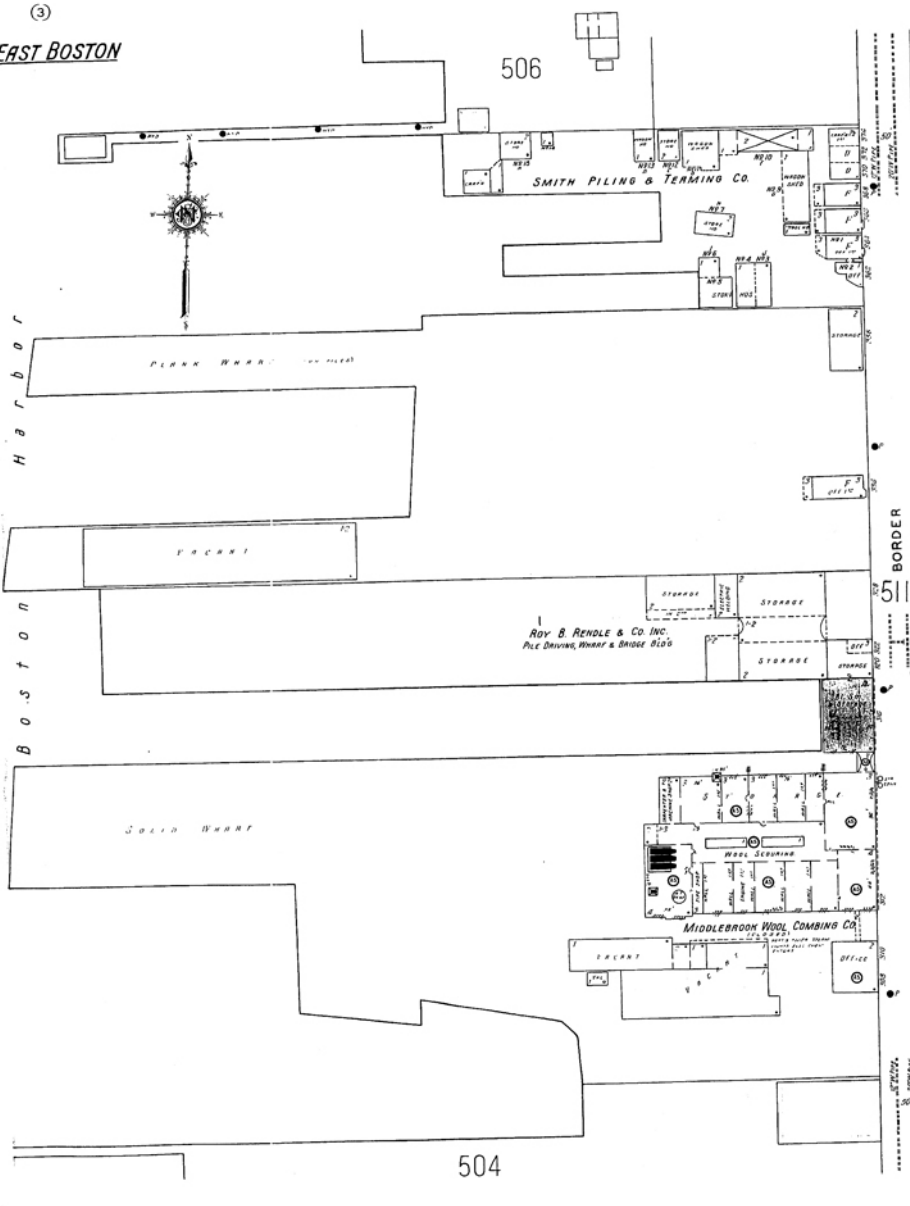
BORDER

ST.

BORDER

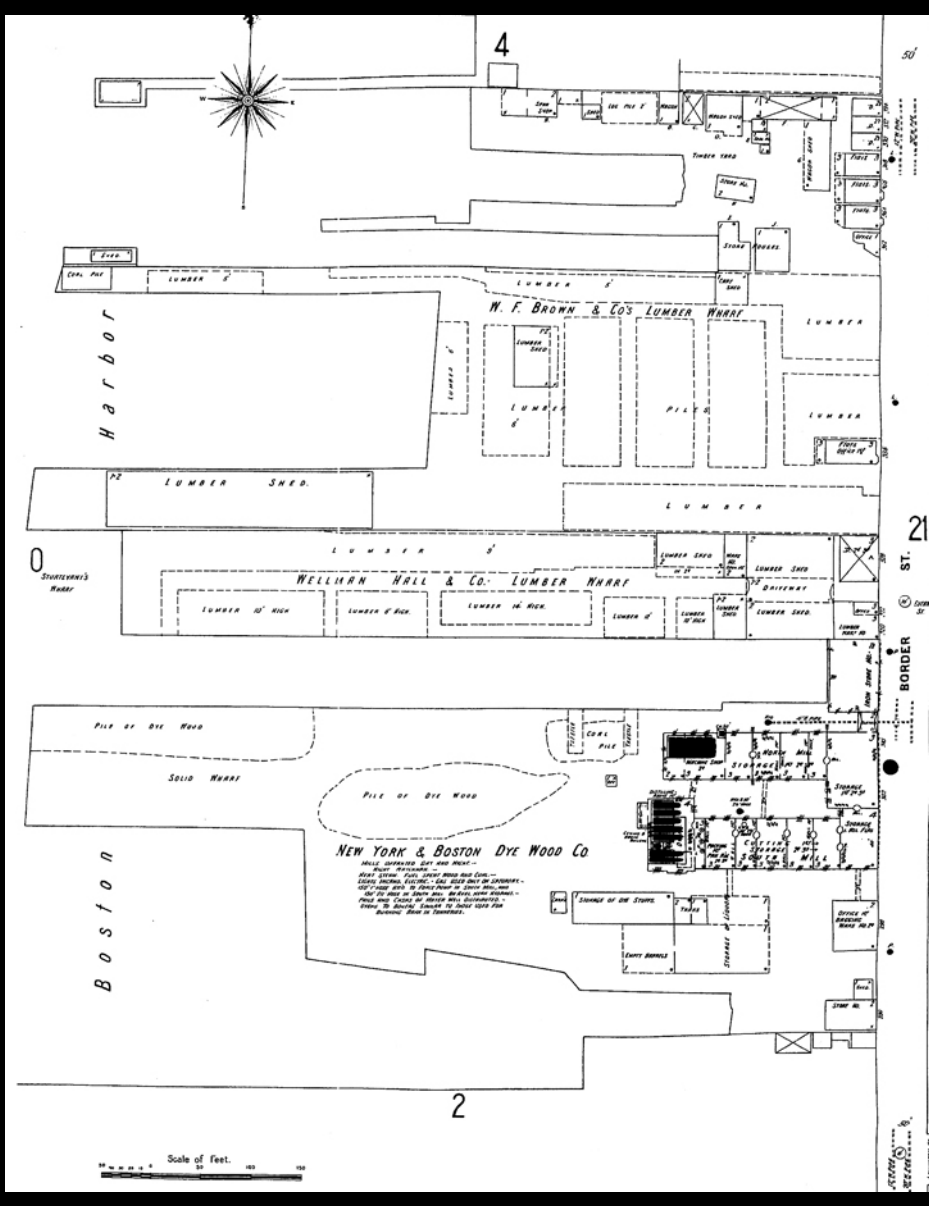
3

EAST BOSTON



504

4



Scale of Feet.



50

21

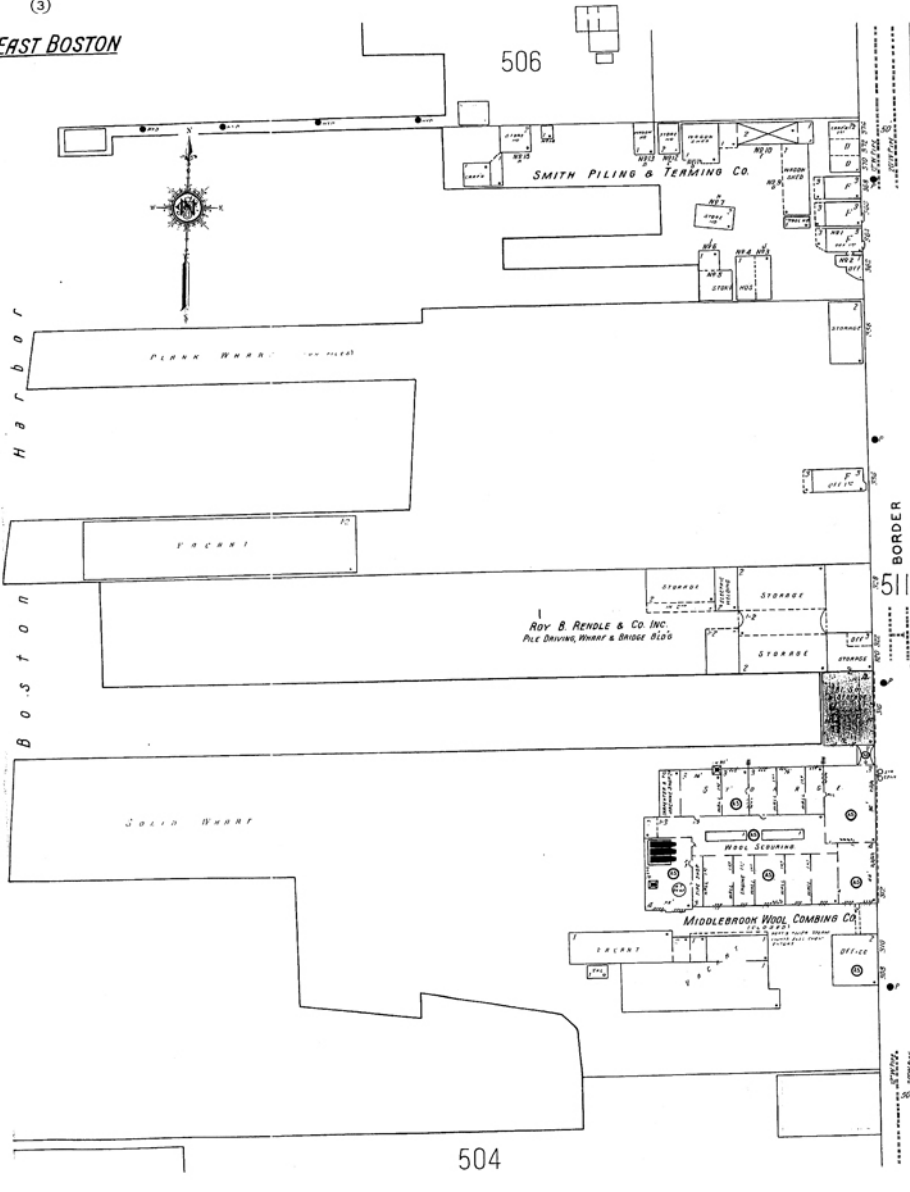
51

BORDER

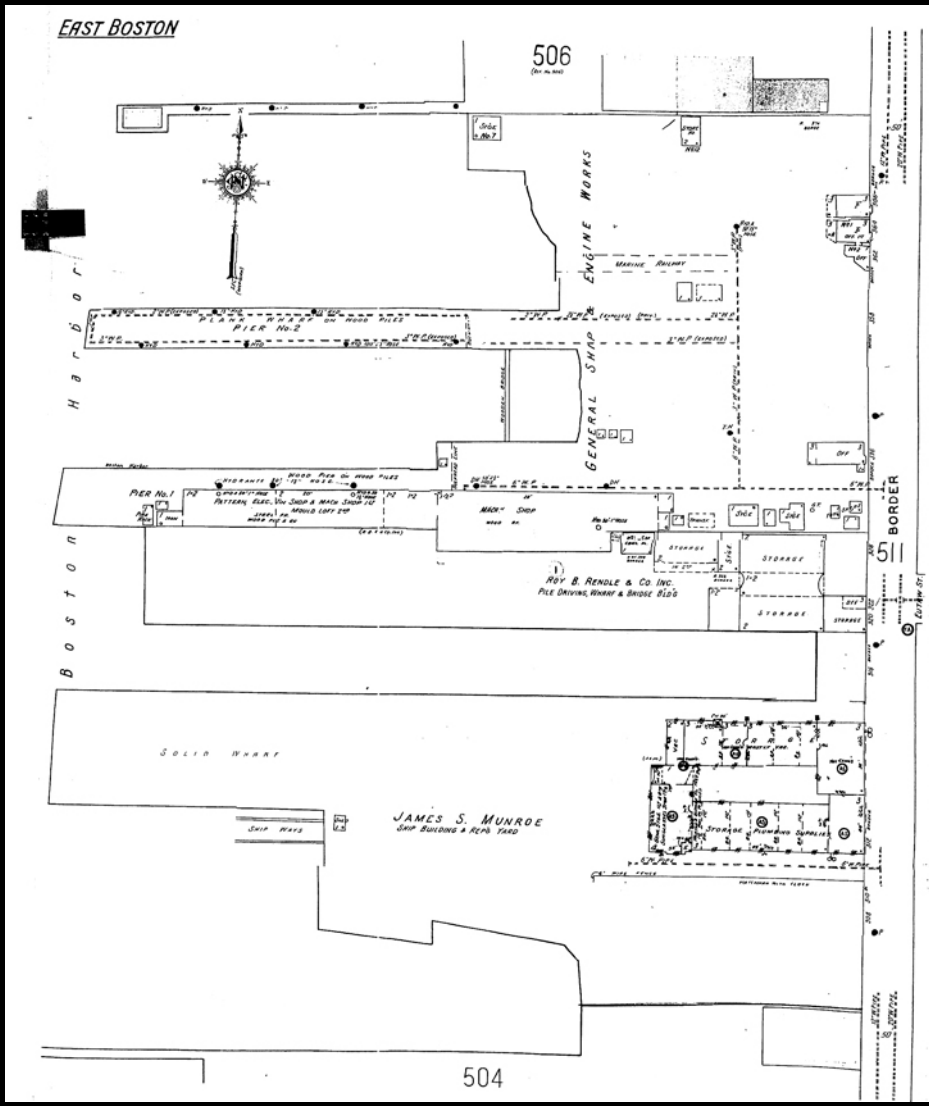
RECORDS

3

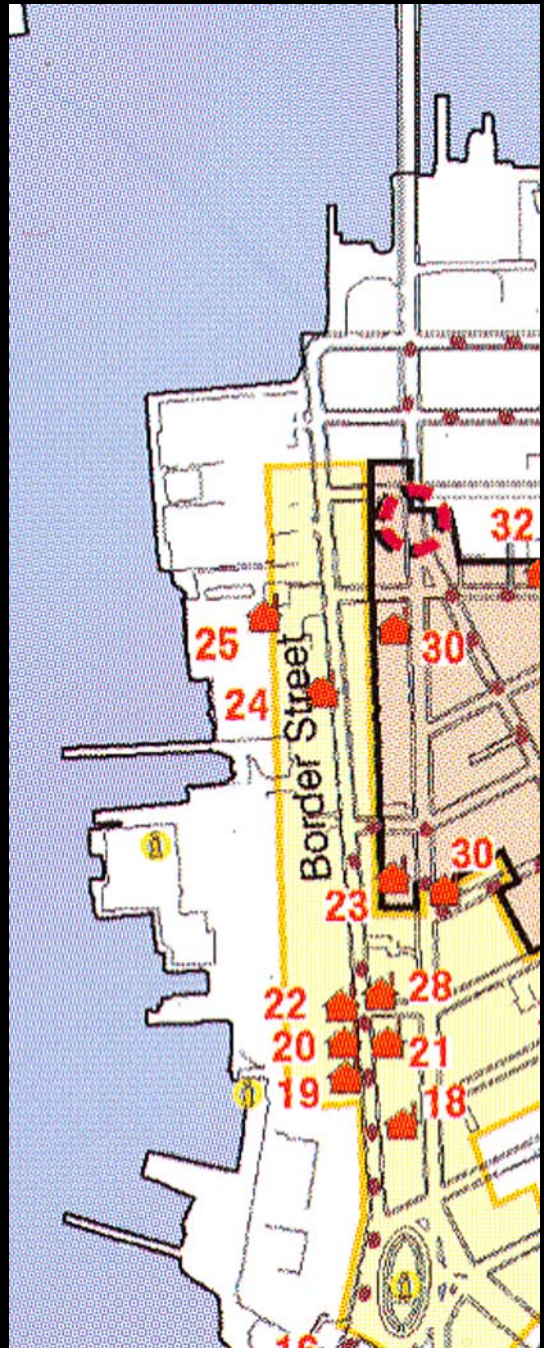
EAST BOSTON



EAST BOSTON





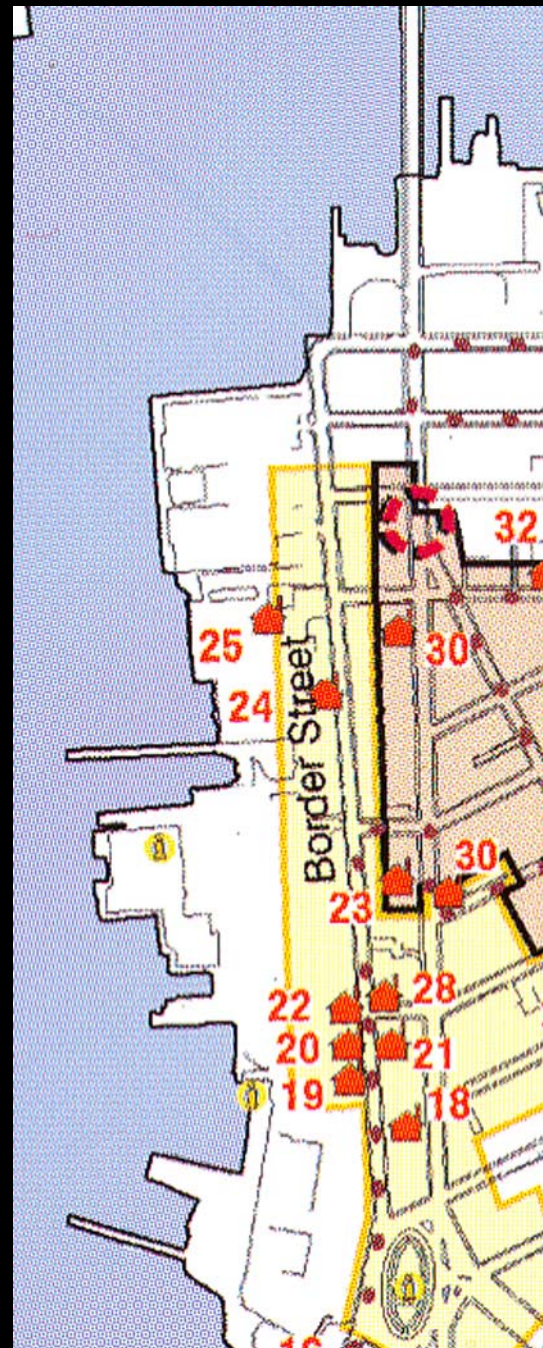


Heritage Trail

Westerbeke Marine
Industries Supplies

McKay Shipyards

Central East Boston

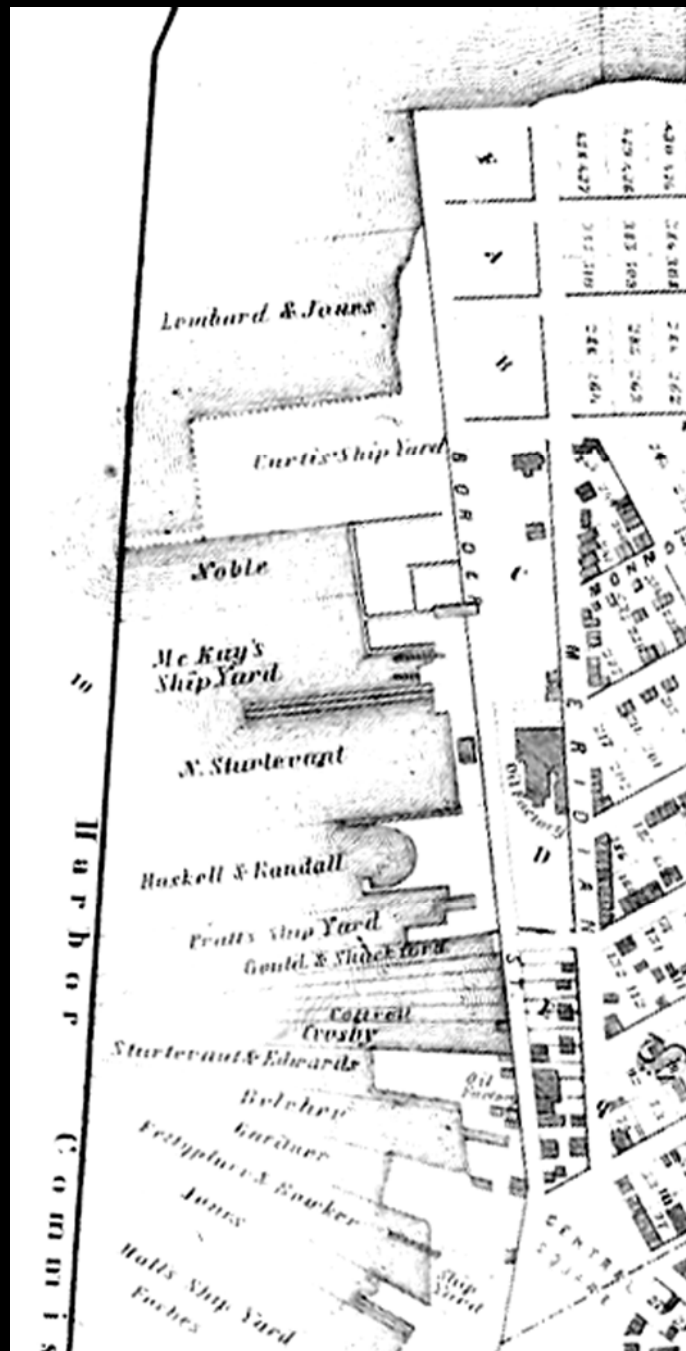


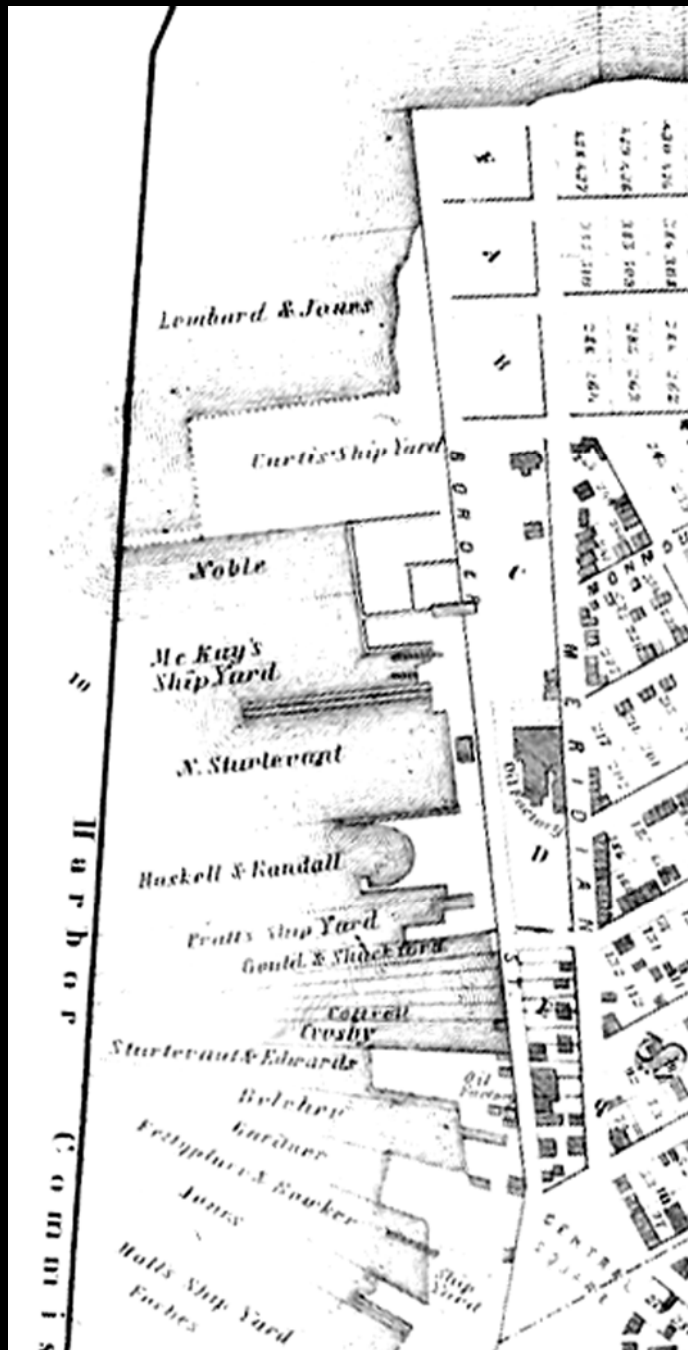
Heritage Trail

Westerbeke Marine
Industries Supplies

McKay Shipyards

Central East Boston







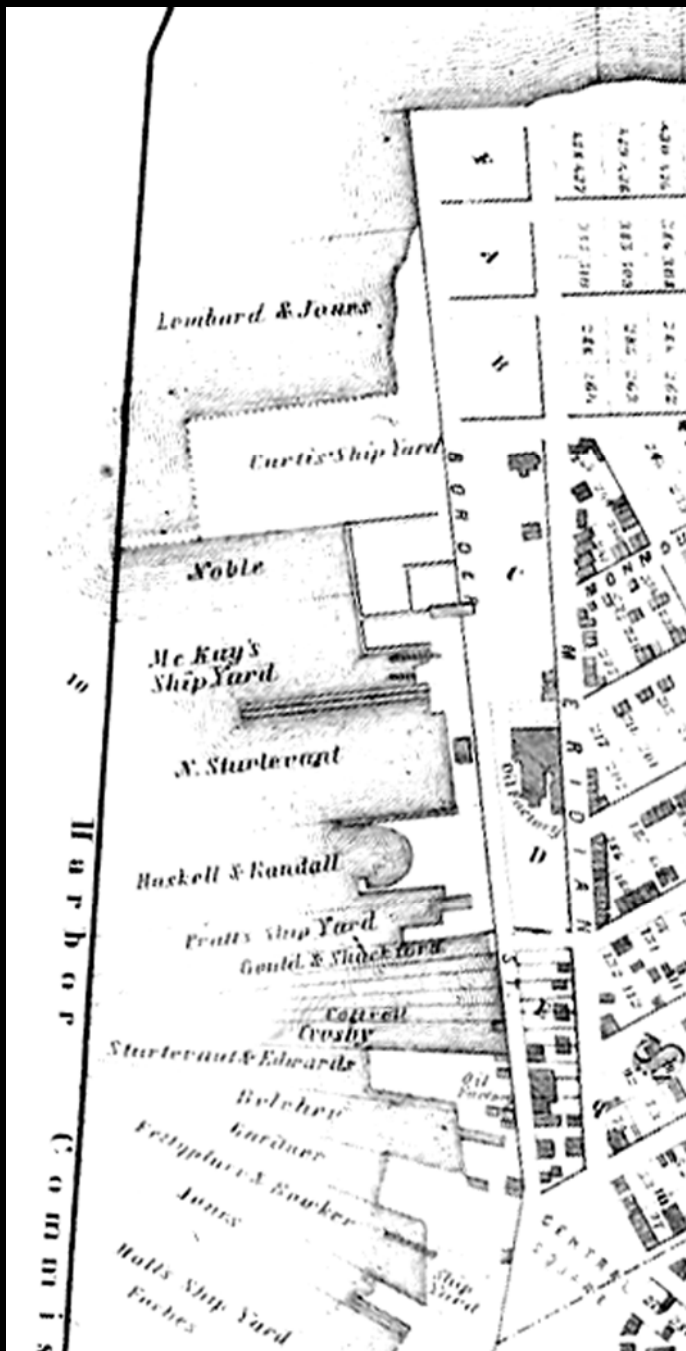


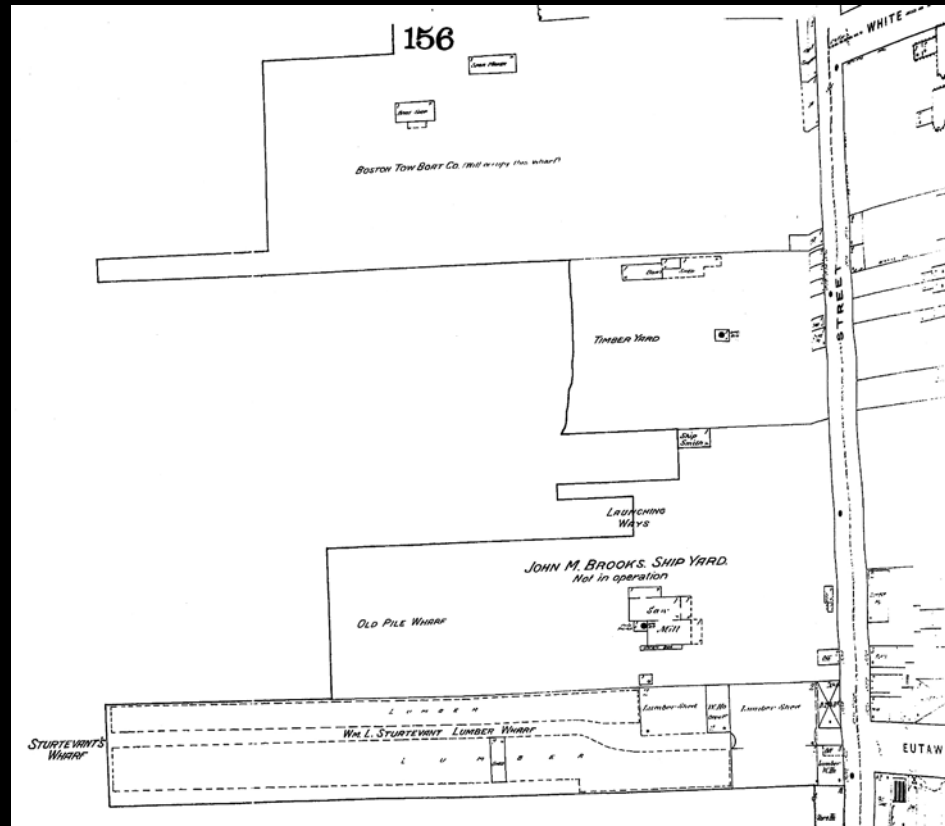
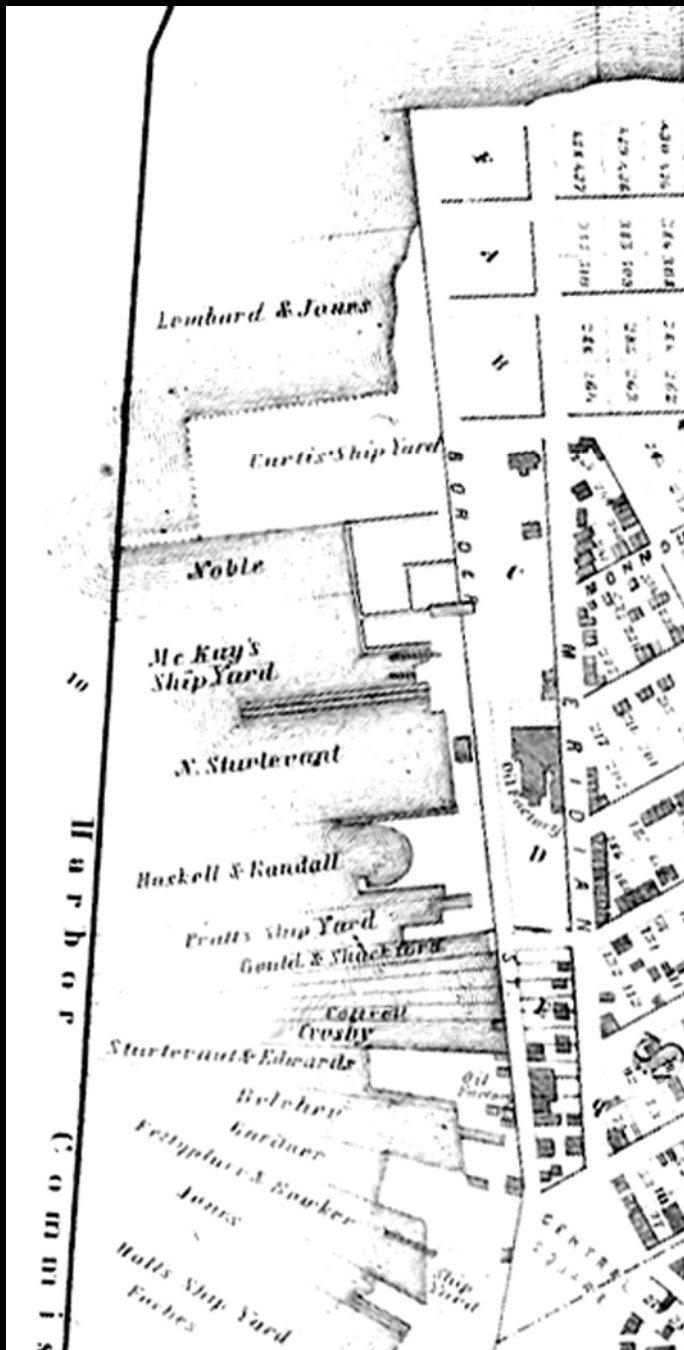




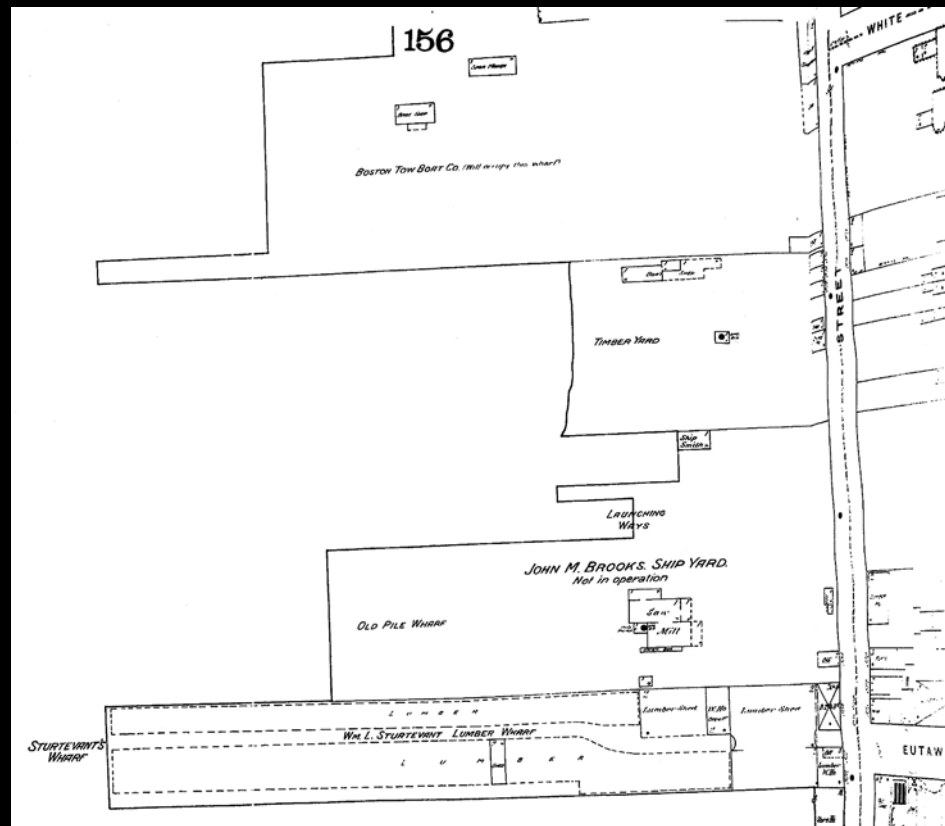


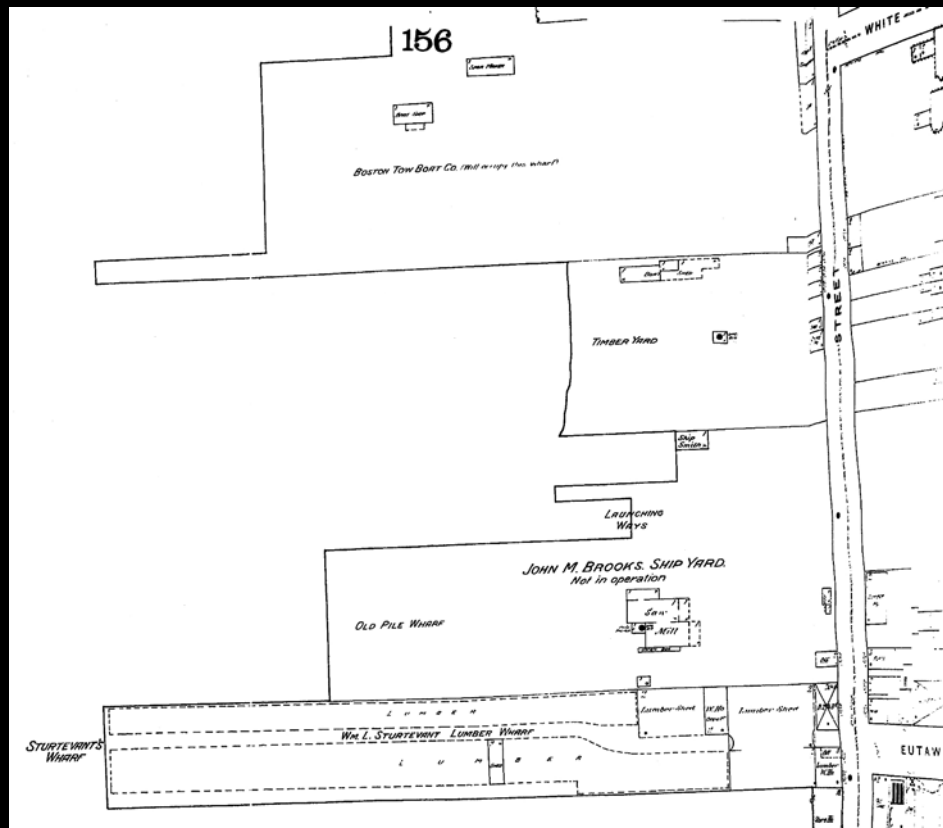
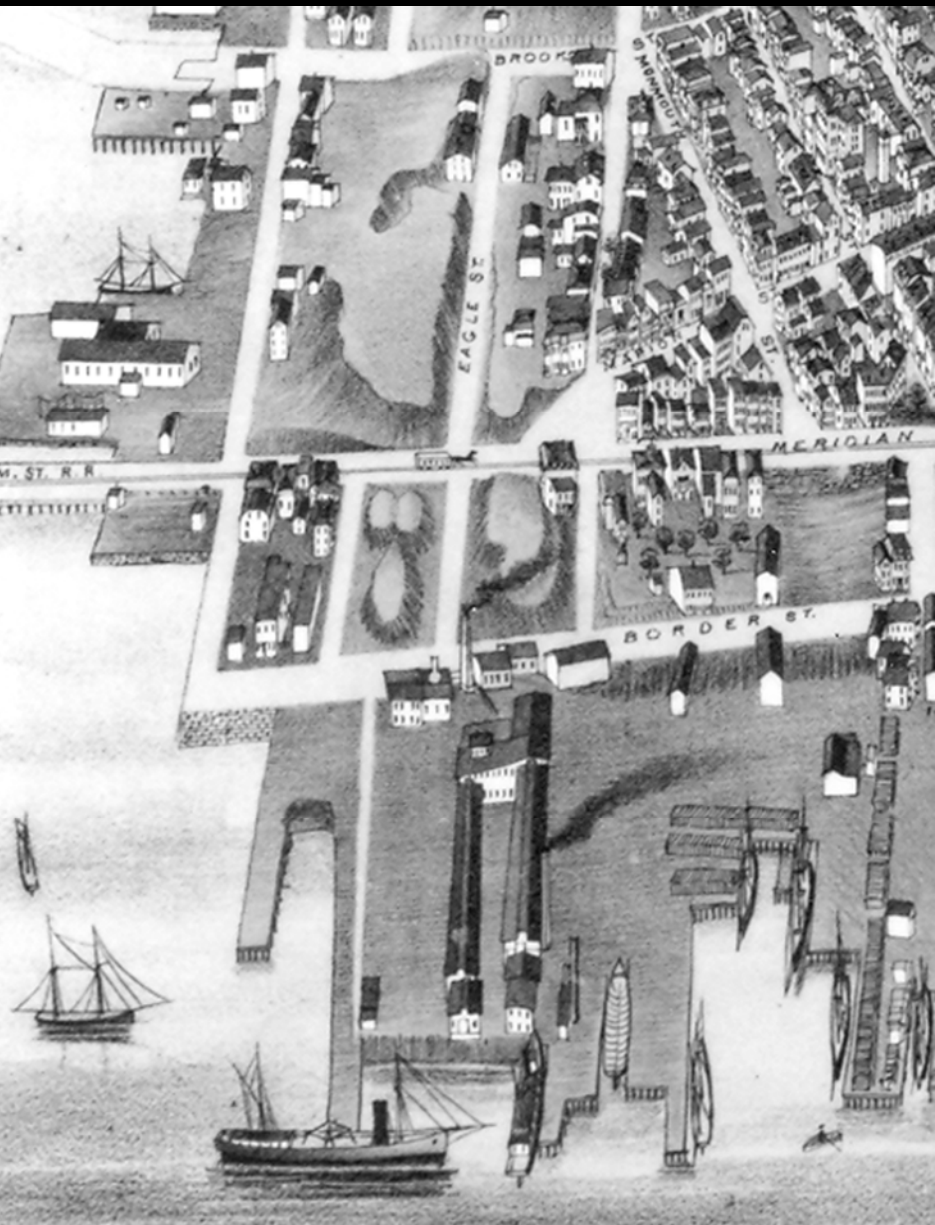


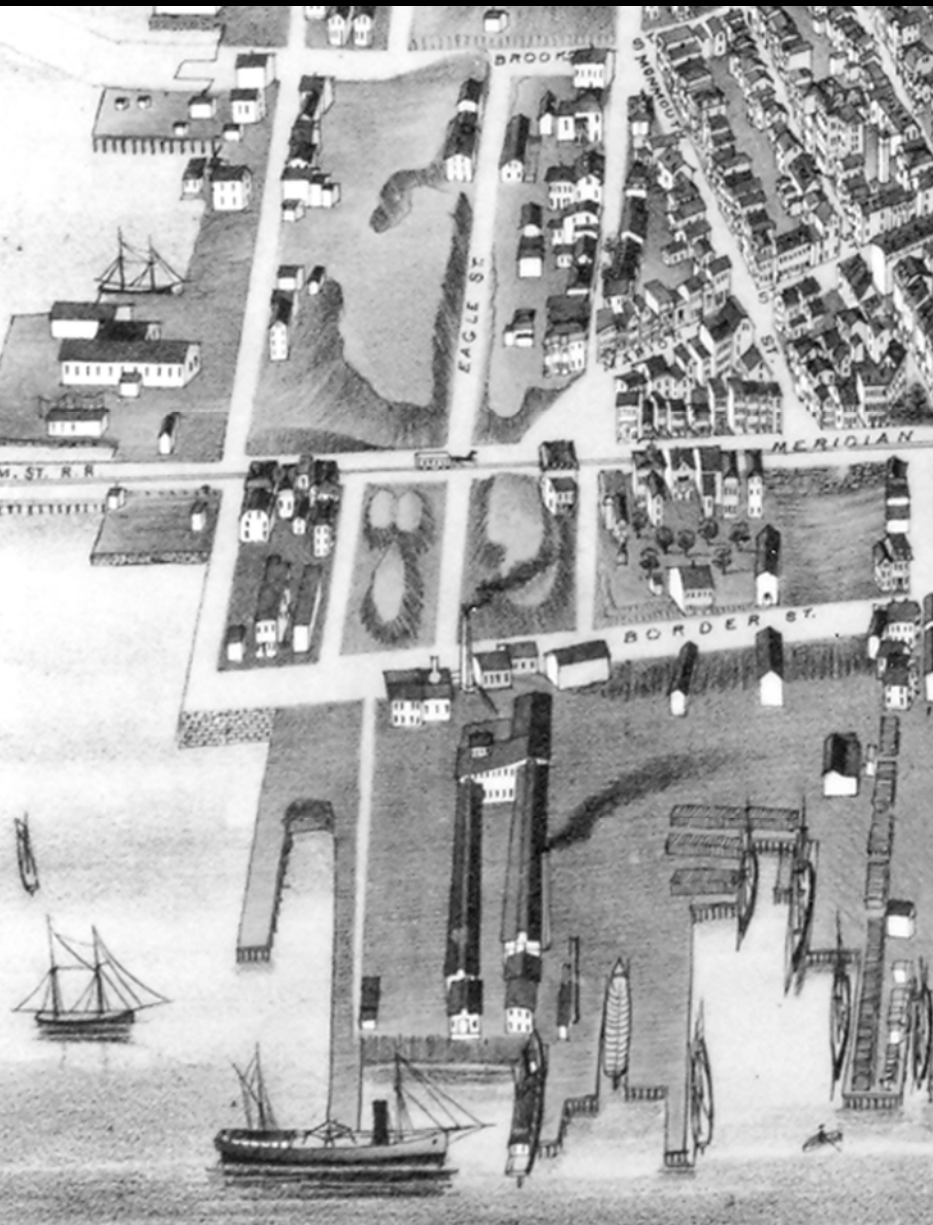


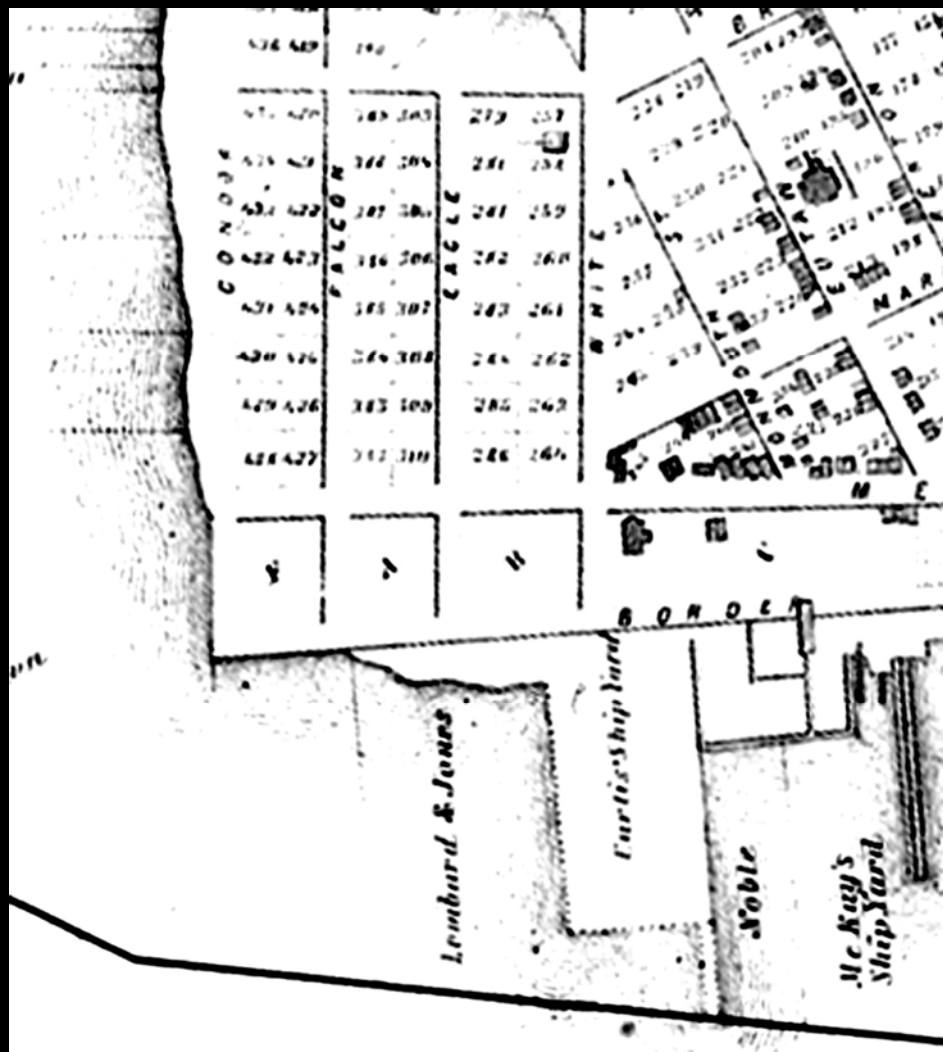
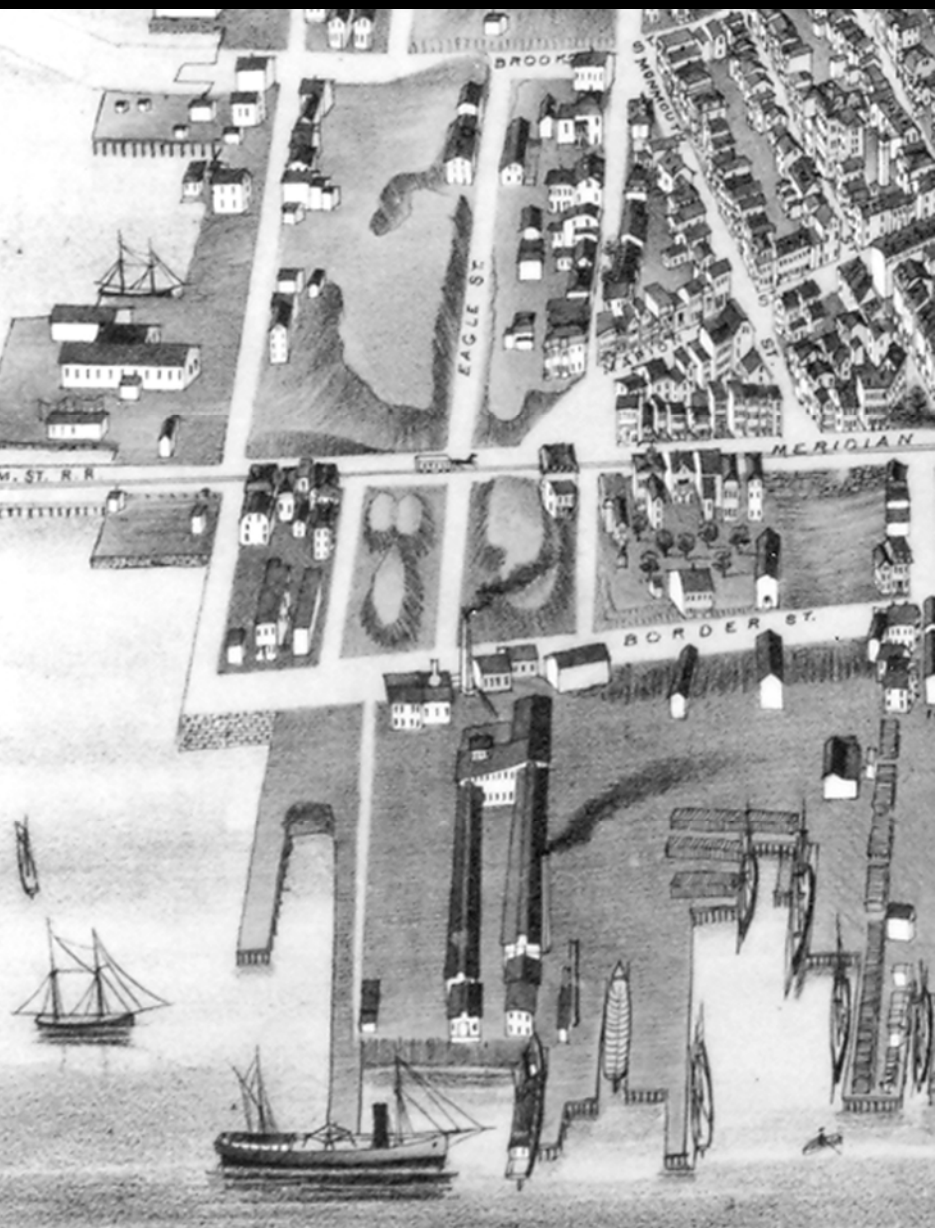


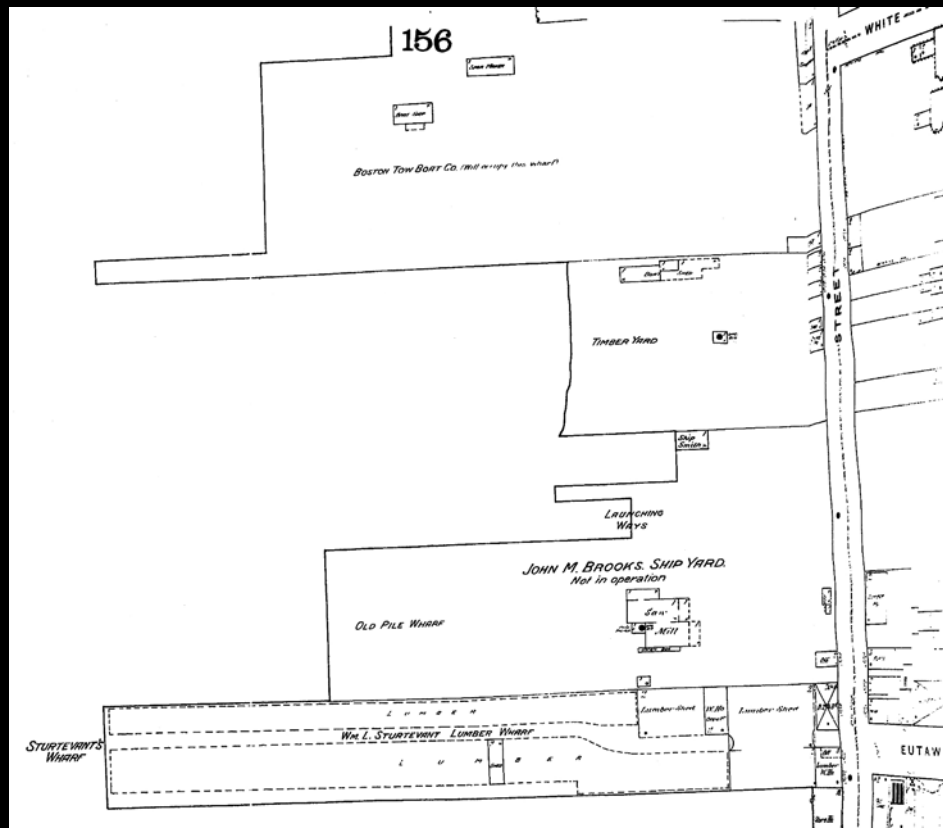
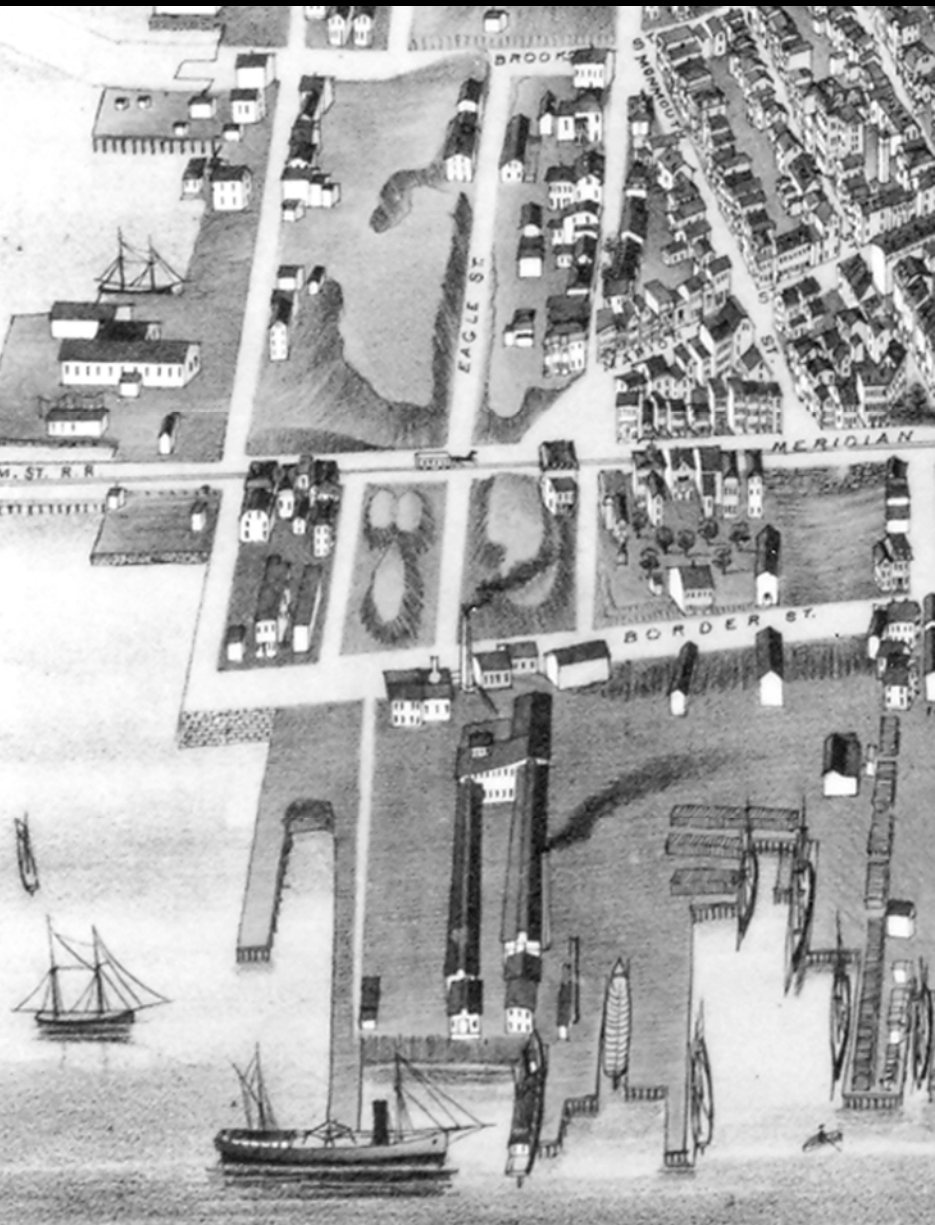


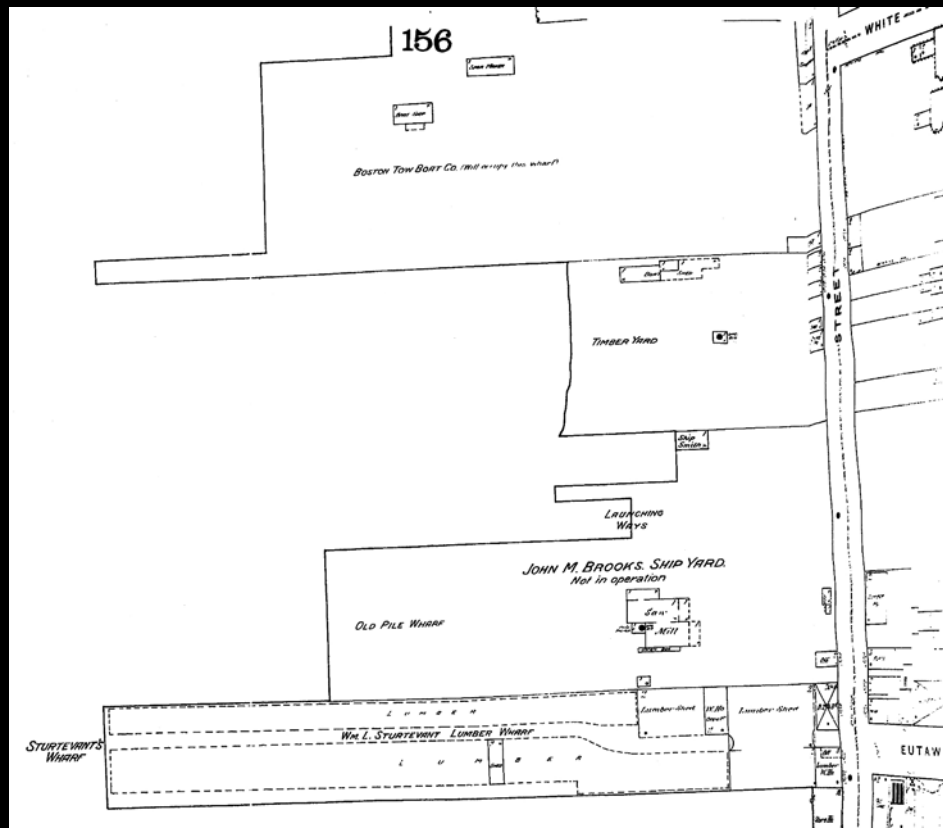
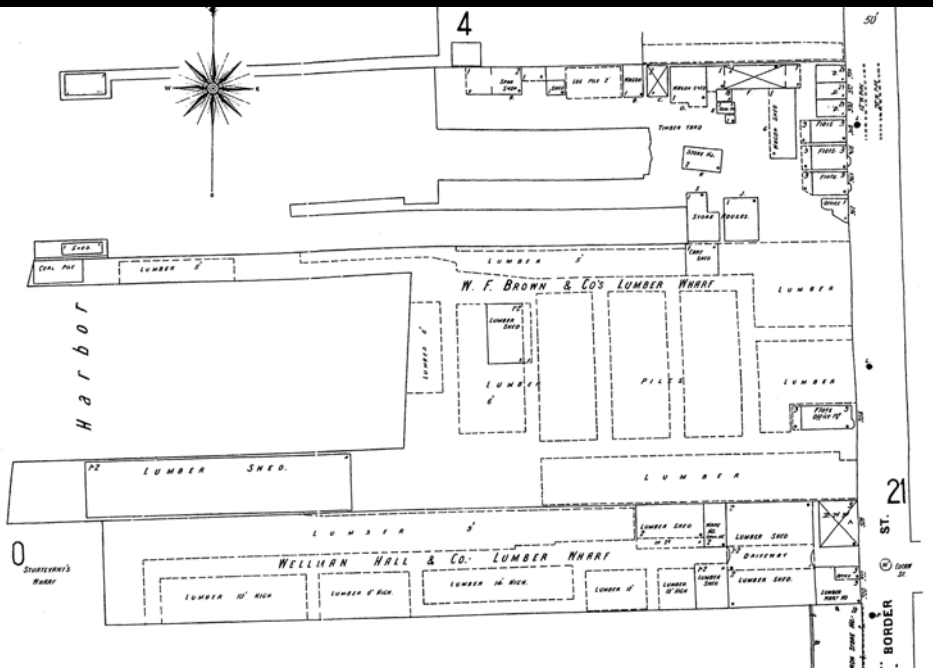


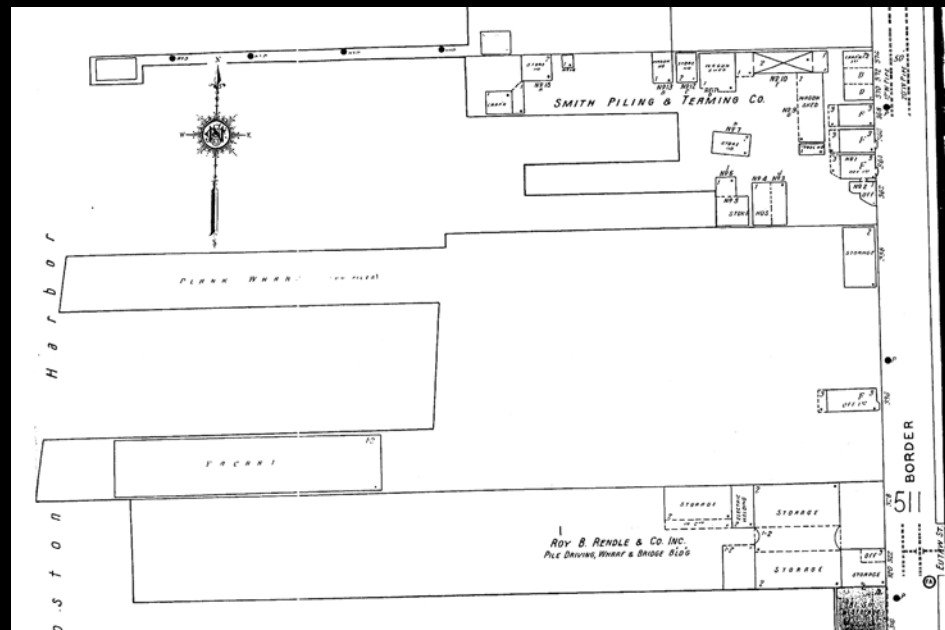
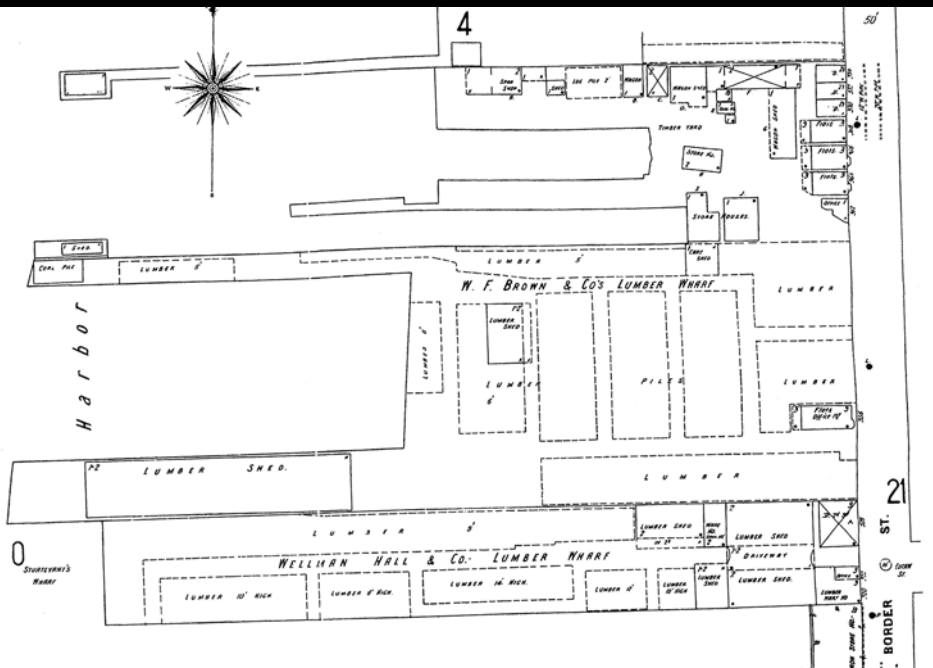


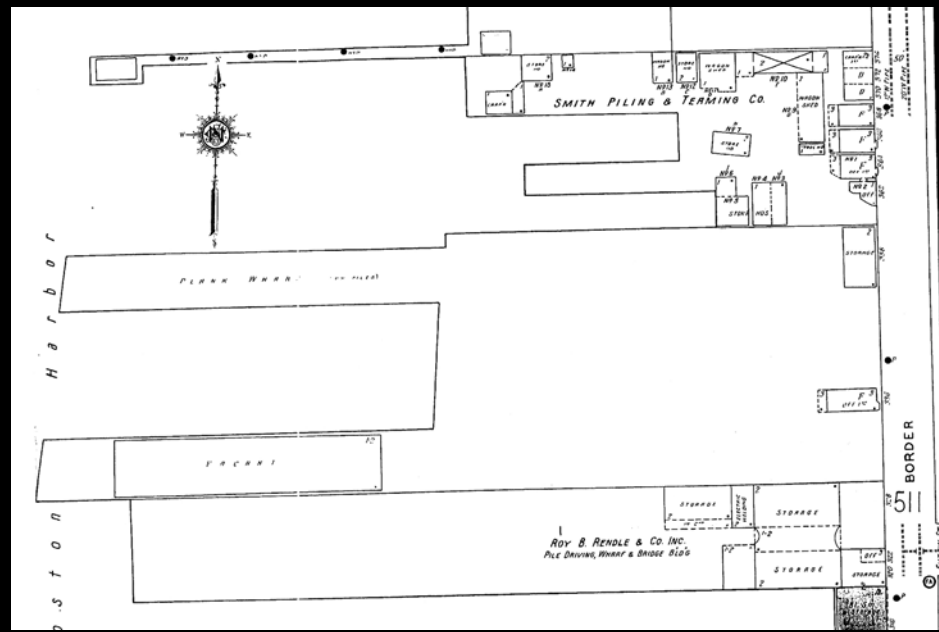
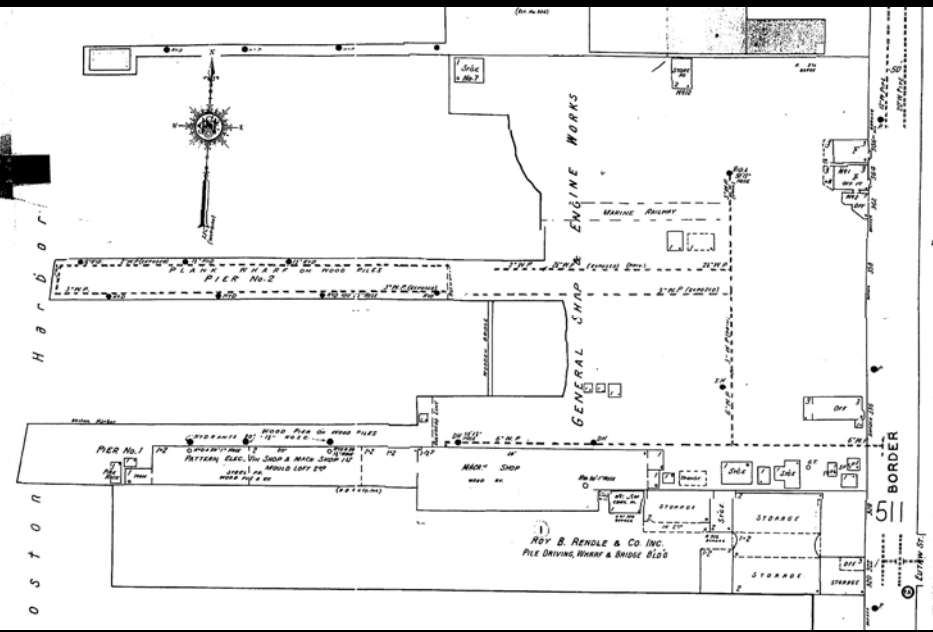


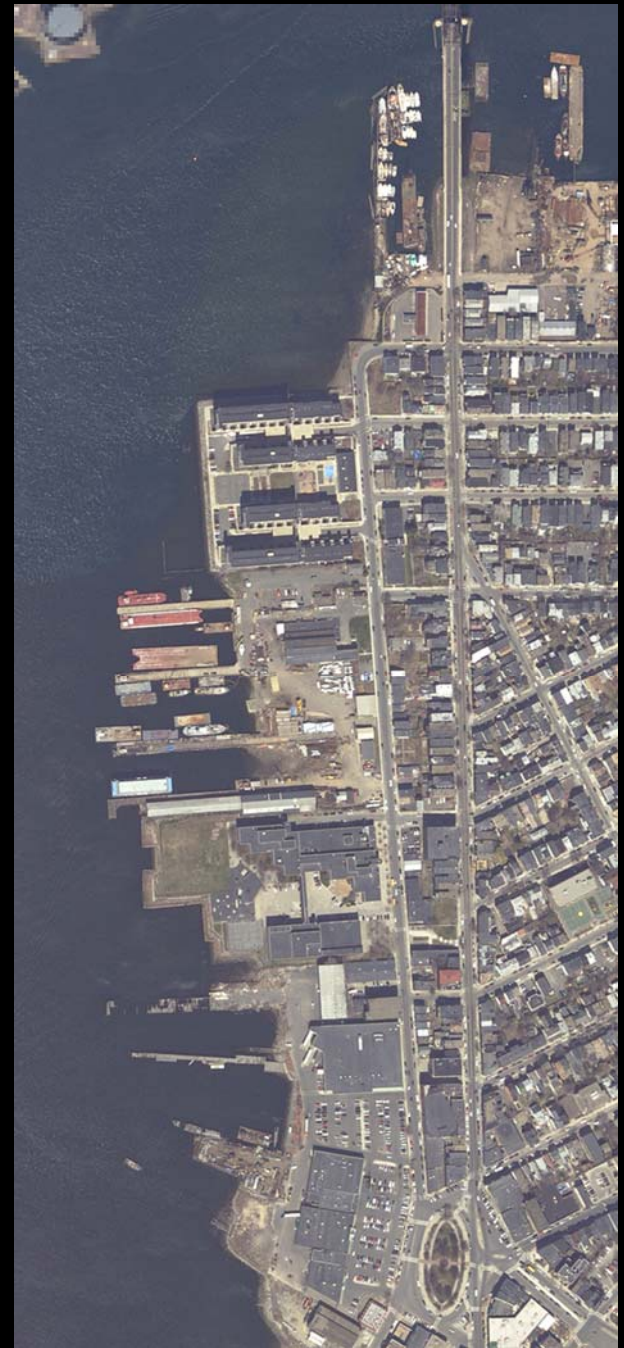
















Heritage Trail

Westerbeke Marine
Industries Supplies

McKay Shipyards

Central East Boston



Central
Square

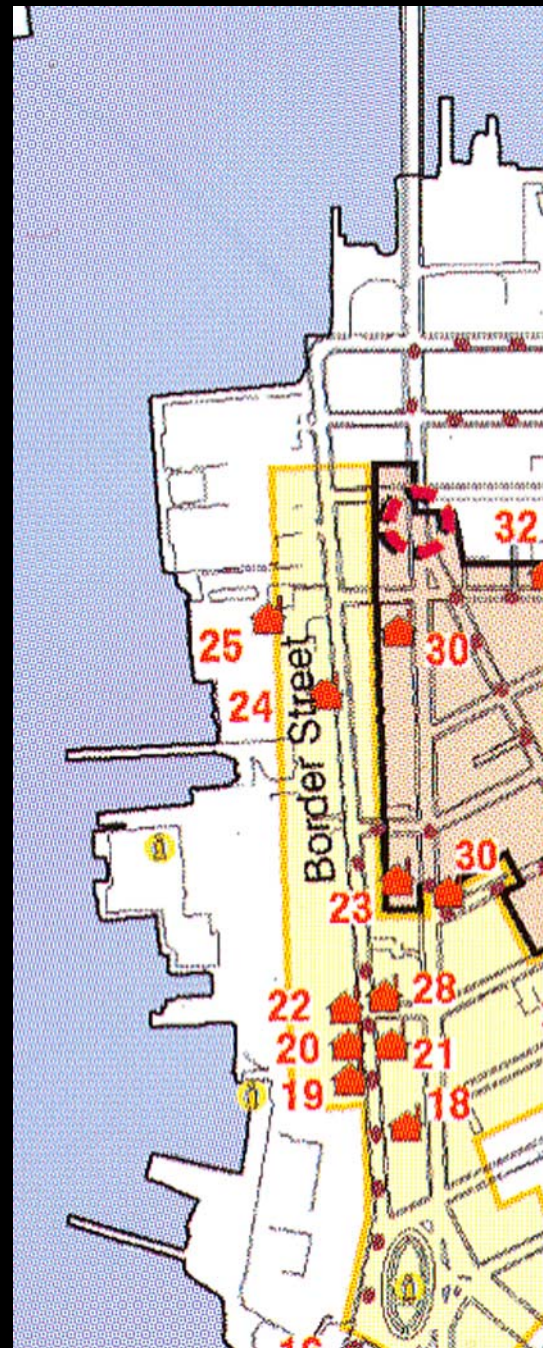


Heritage Trail

Westerbeke Marine
Industries Supplies

McKay Shipyards

Central East Boston



Heritage Trail

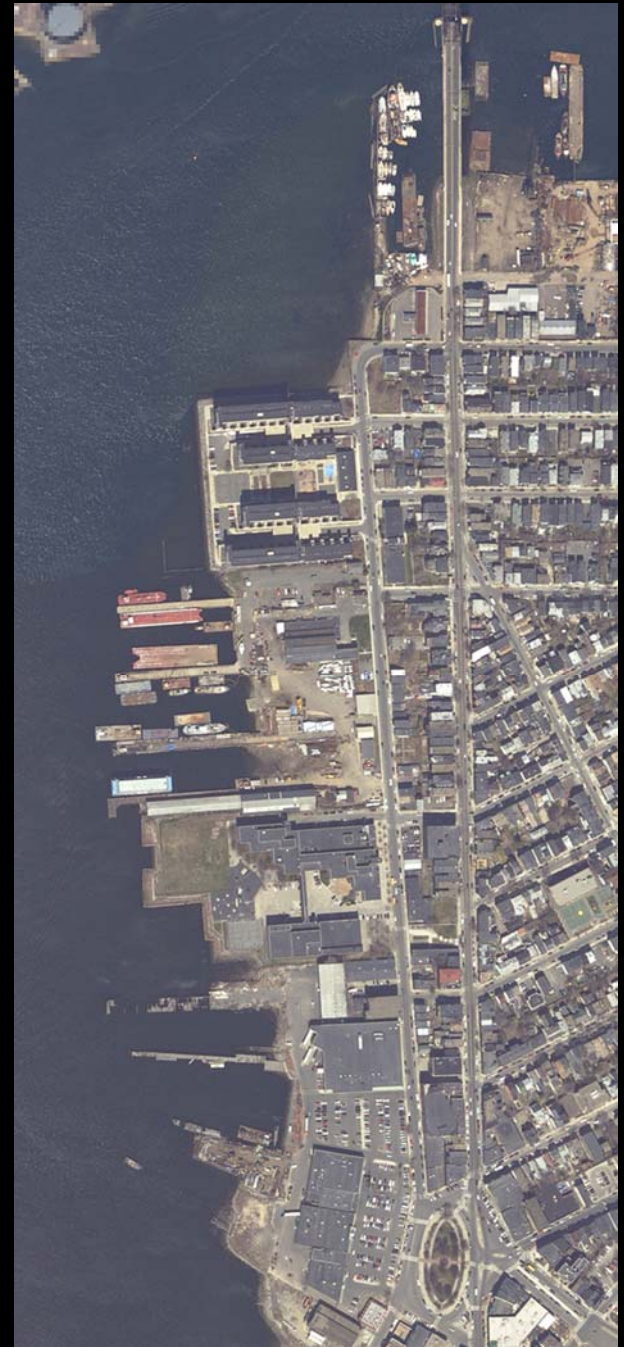
Westerbeke Marine
Industries Supplies

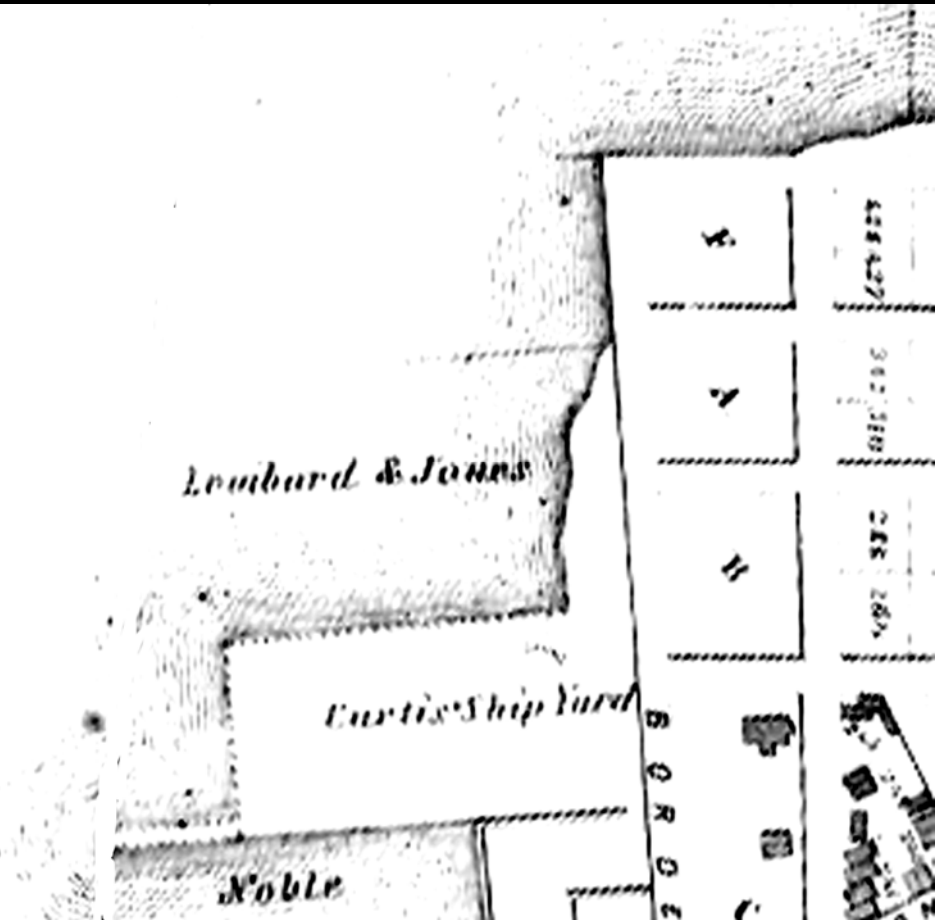
McKay Shipyards

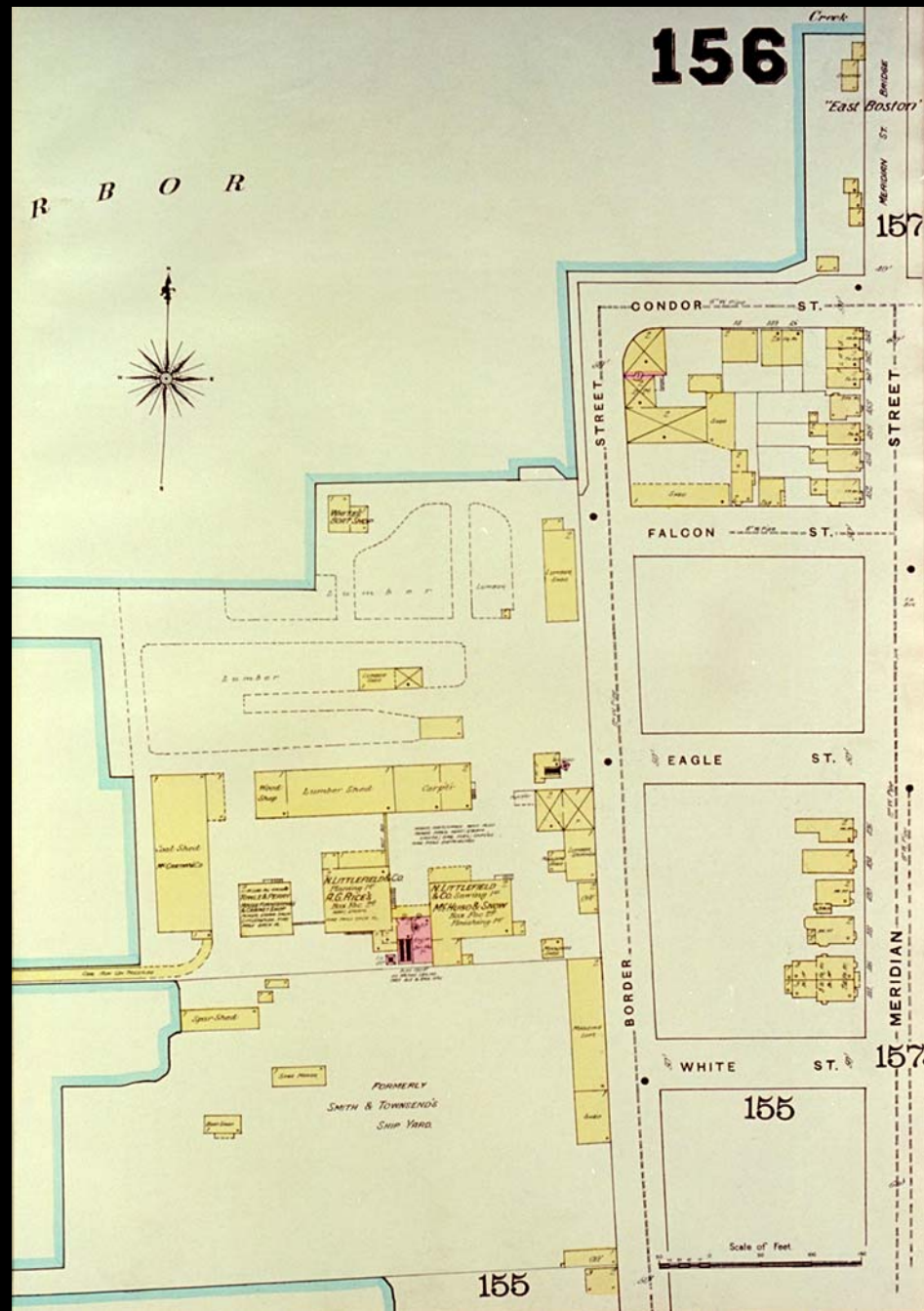
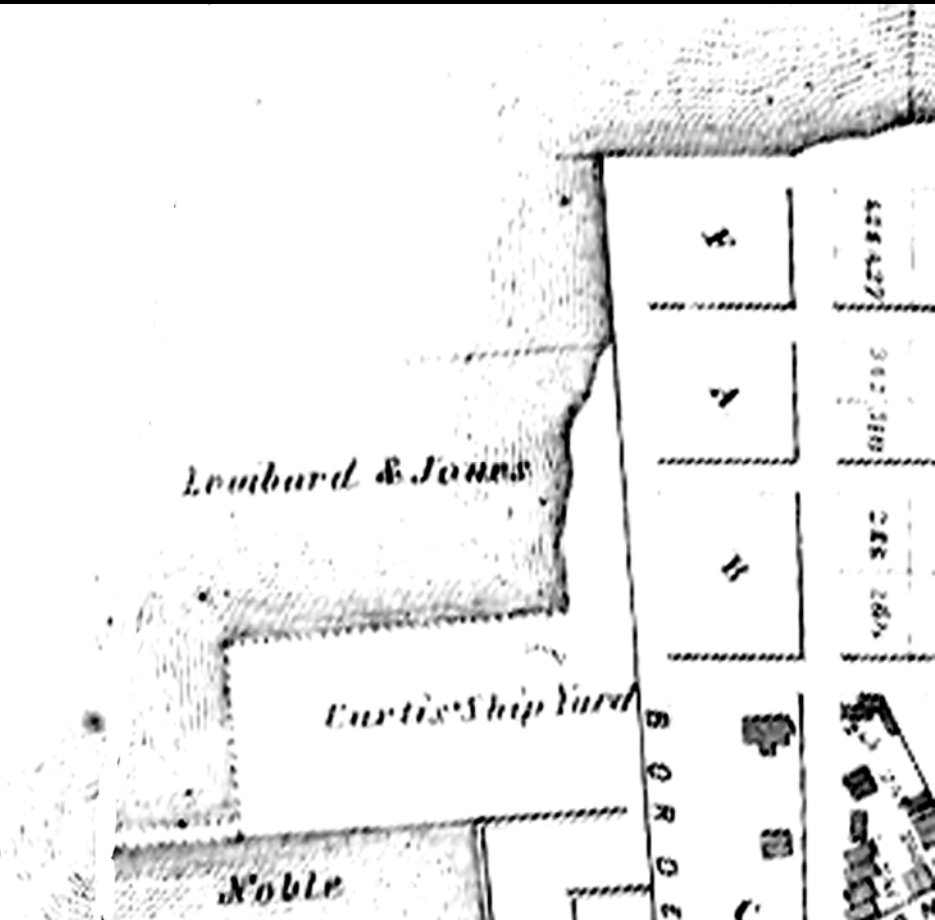
Central East Boston

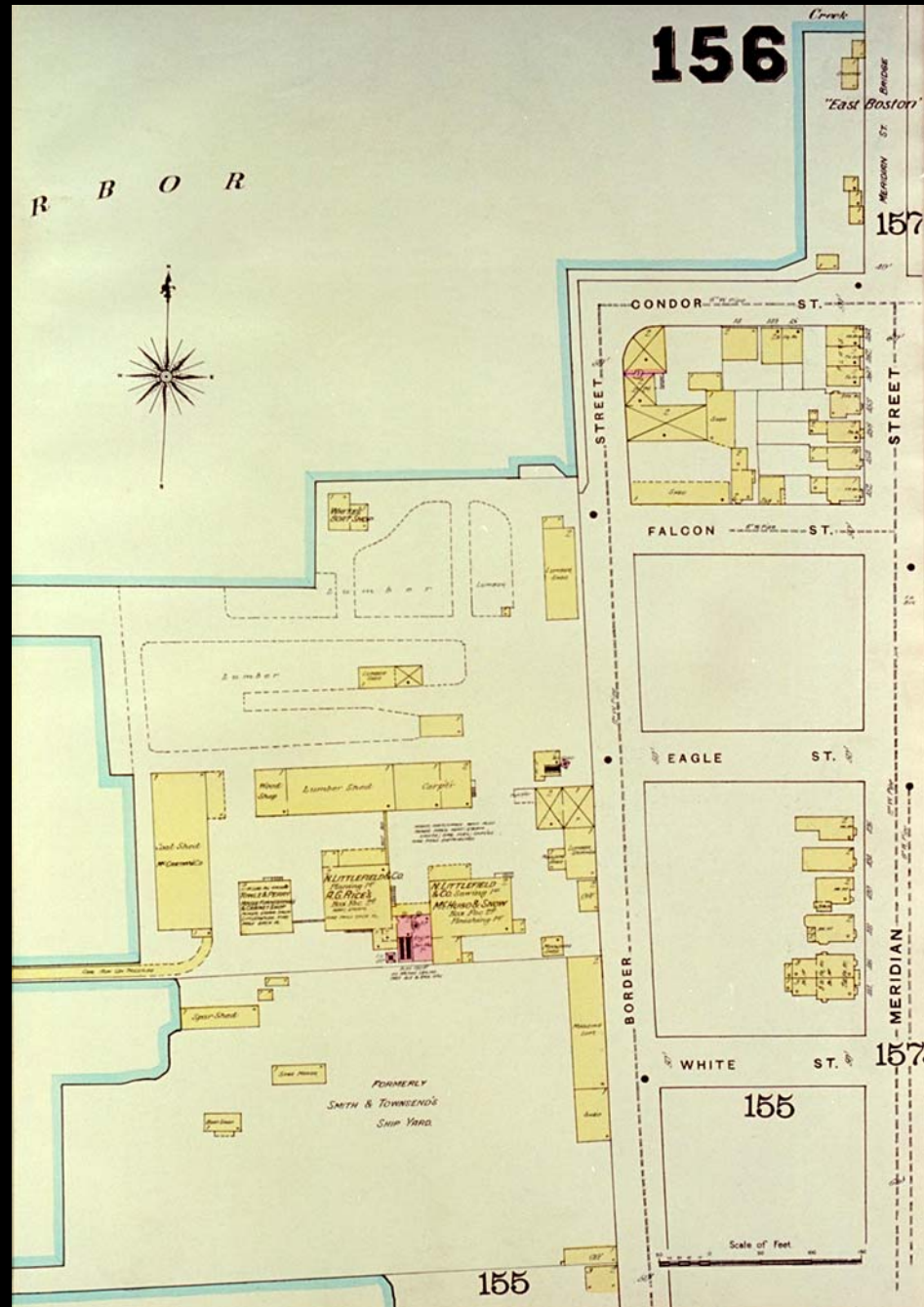
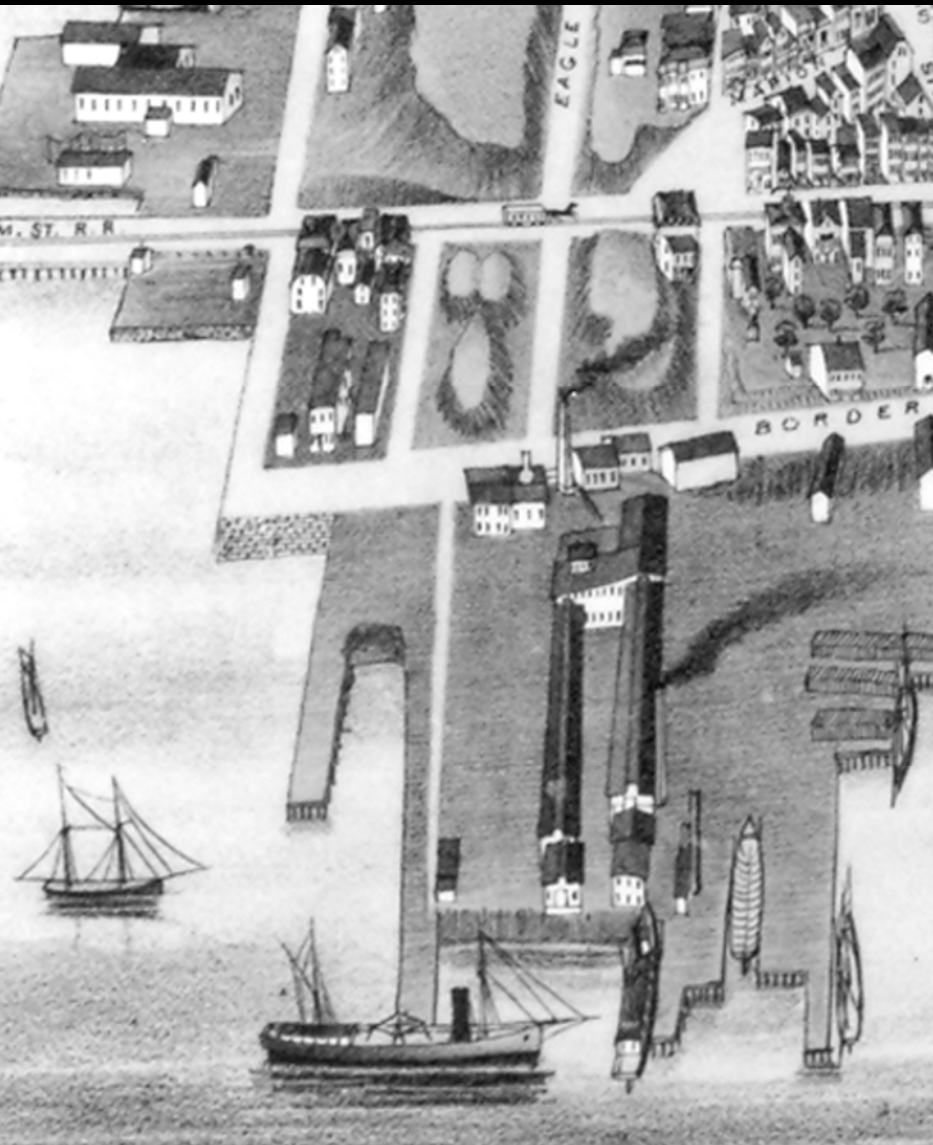


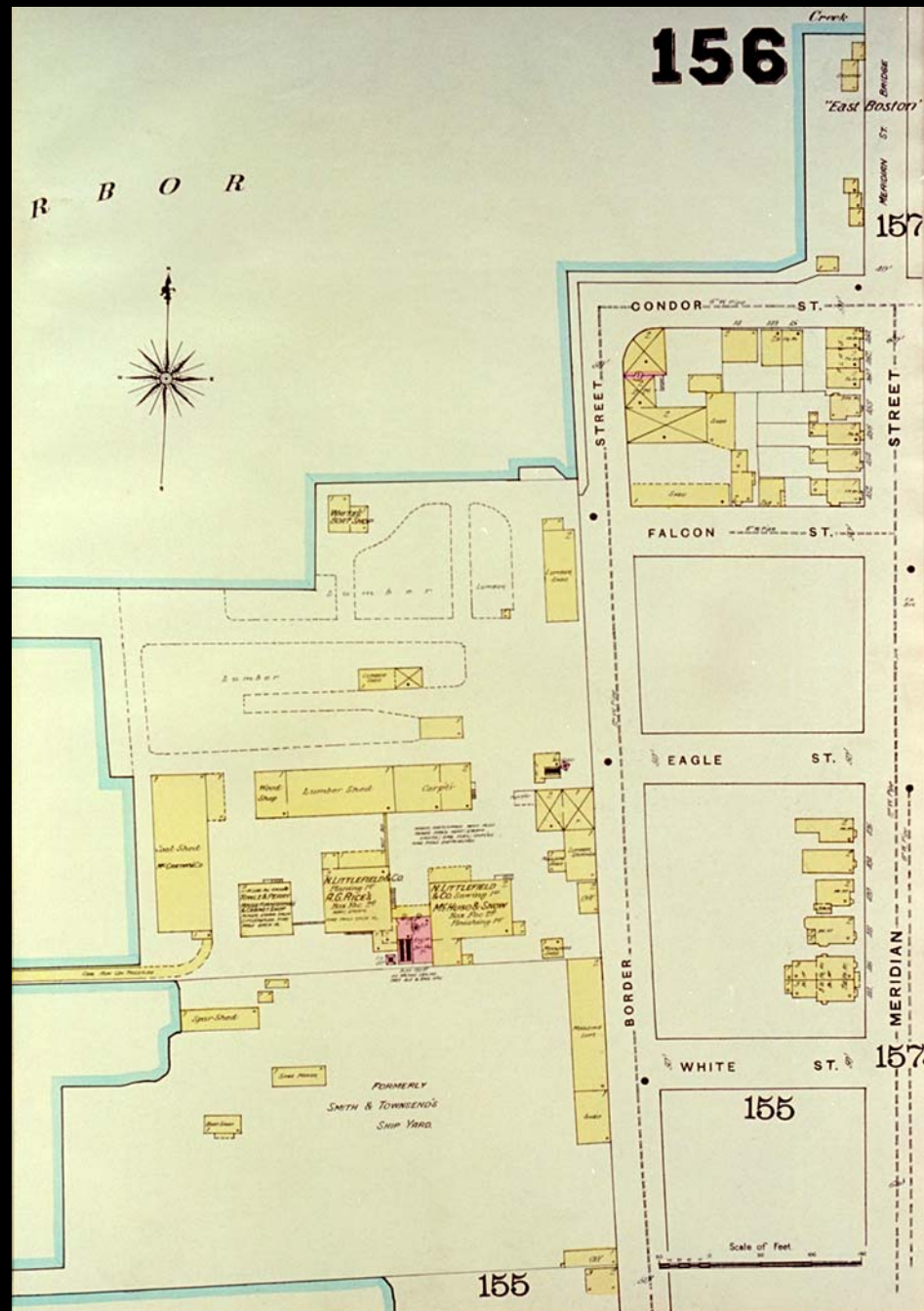
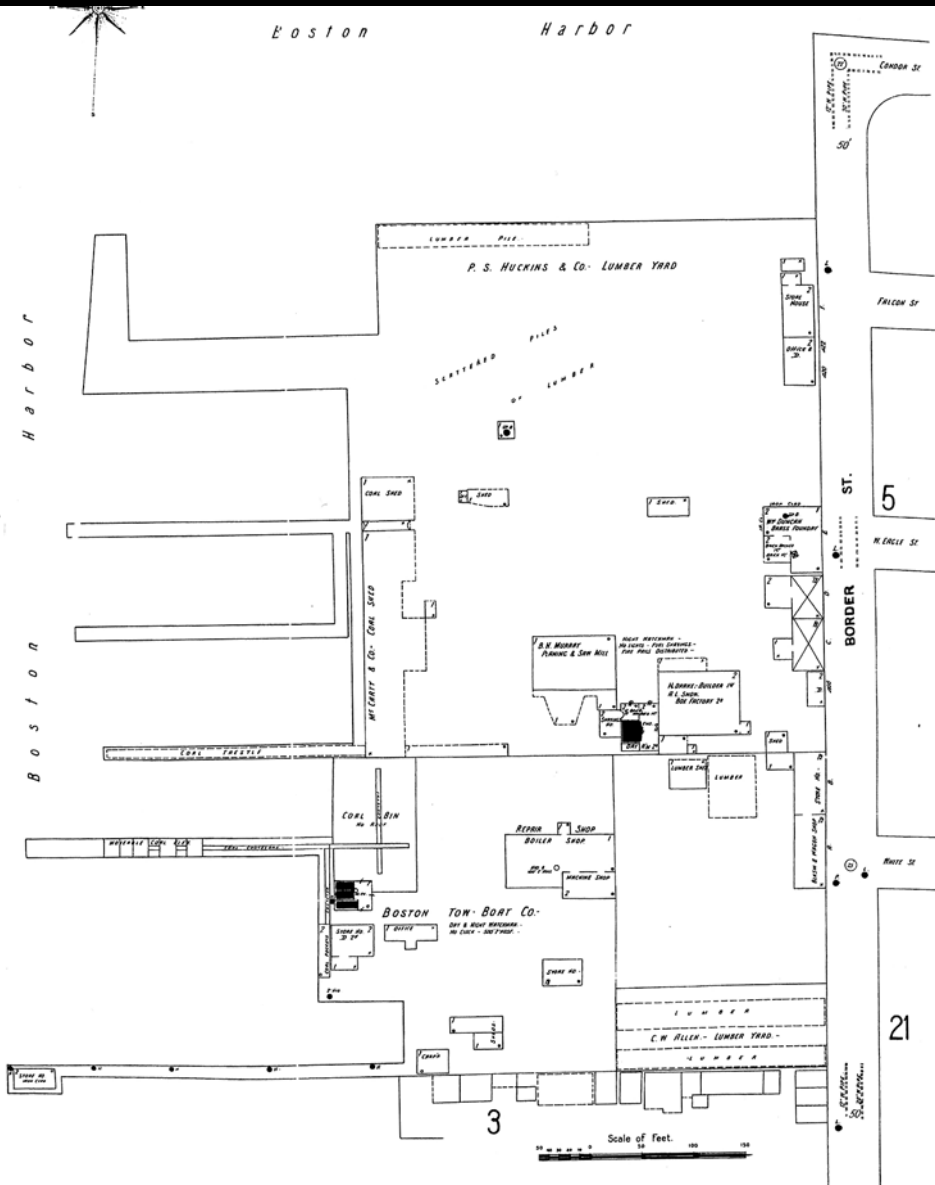
Central
Square







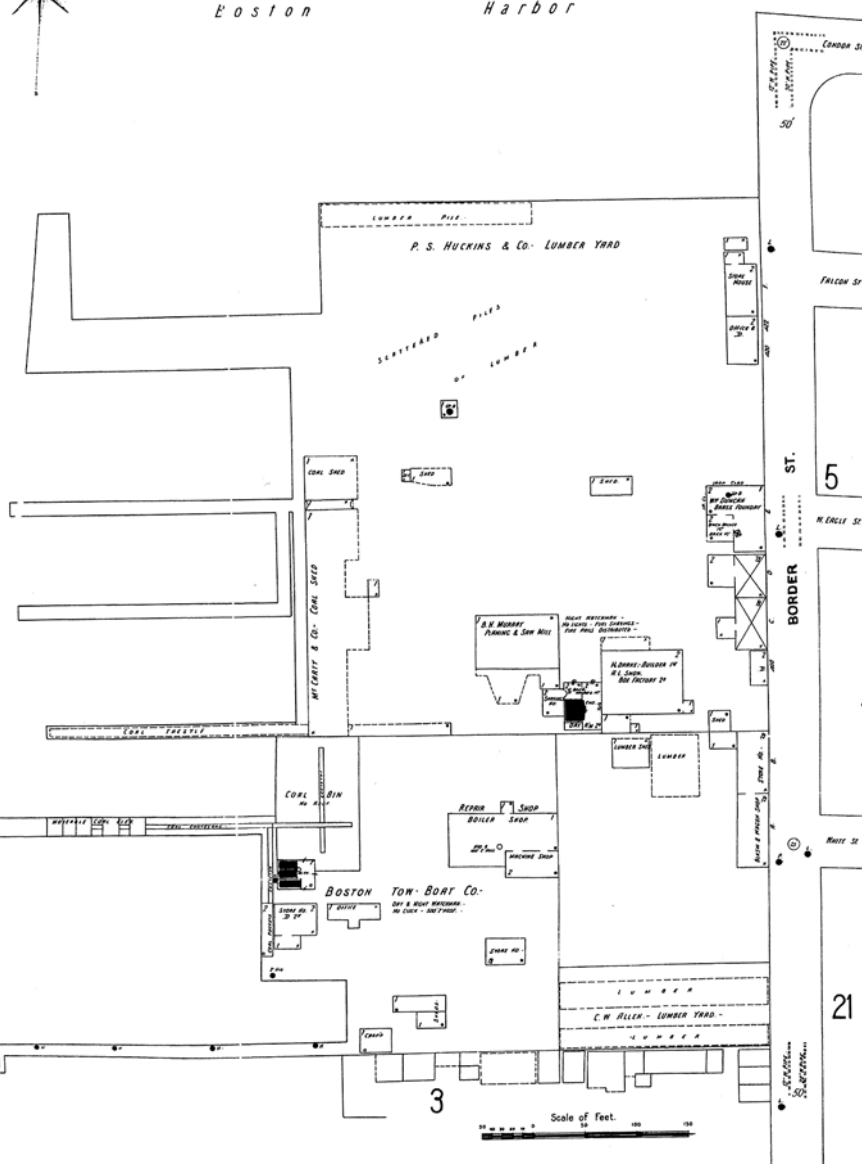




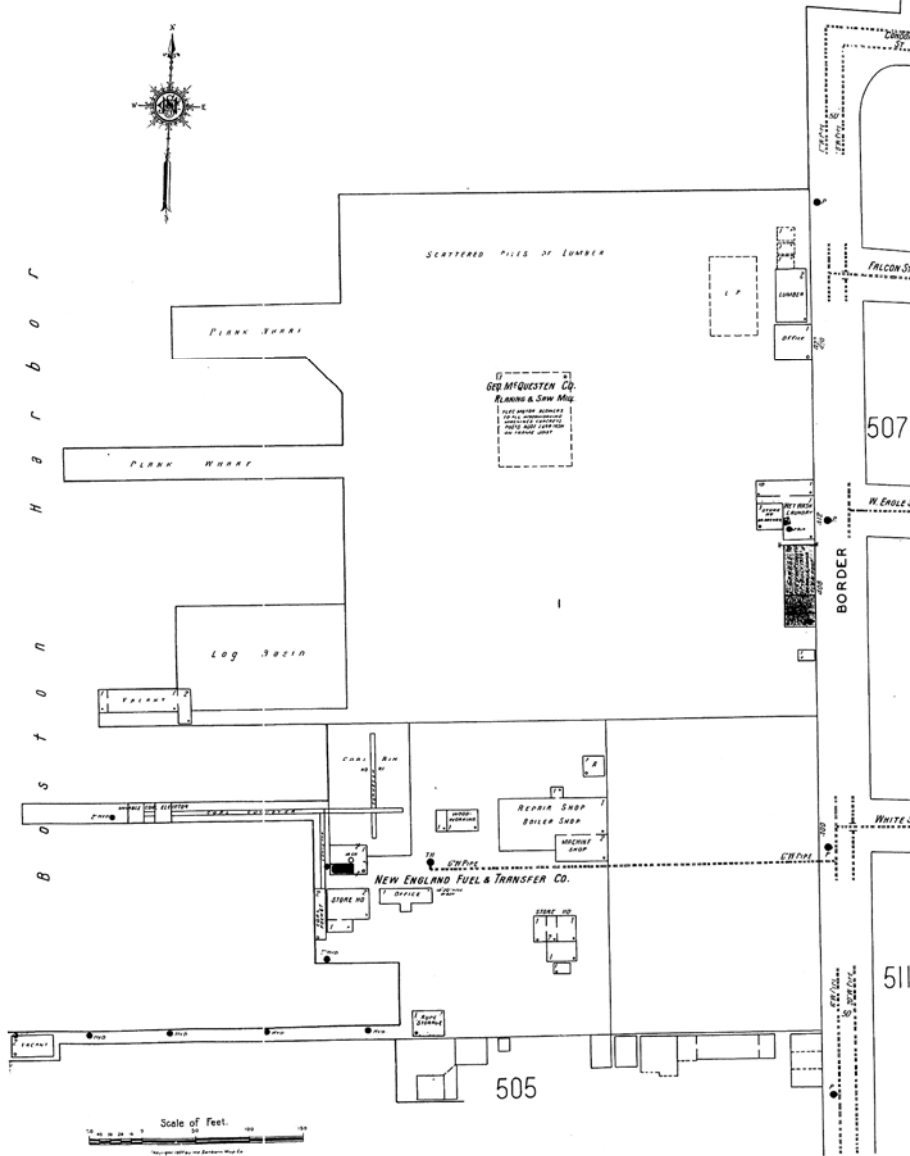
Boston

Harbor

Boston Harbor



Boston Harbor



B o s t o n H a r b o r



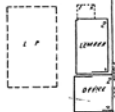
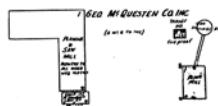
B
o
s
t
o
n
H
a
r
b
o
r

SCATTERED PILES OF LUMBER

PLANK WHARF

PLANK WHARF

Log Basin



507

BORDER

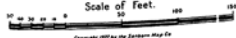
511

EASTERN GAS & FUEL ASSOCIATES
MYSTIC STEAMSHIP DIV.



505

Scale of Feet.



Copyright 1917 by the Standard Map Co.

B o s t o n H a r b o r



B
o
s
t
o
n
H
a
r
b
o
r

SCATTERED PILES OF LUMBER

PLANK WHARF

PLANK WHARF

Log Basin

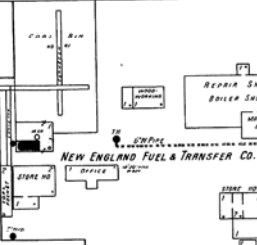


507

BORDER

511

NEW ENGLAND FUEL & TRANSFER CO.



505

Scale of Feet.



Copyright 1917 by the Standard Map Co.

B o s t o n H a r b o r



B
o
s
t
o
n
H
a
r
b
o
r

SCATTERED PILES OF LUMBER

PLANK WHARF

PLANK WHARF

Log Basin



507

BORDER

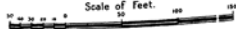
511

EASTERN GAS & FUEL ASSOCIATES
MYSTIC STEAMSHIP DIV.



505

Scale of Feet.



B O S T O N H A R B O R



B
O
S
T
O
N
H
A
R
B
O
R

SCATTERED PILES OF LUMBER

PLANK WHARF

PLANK WHARF

Log Basin

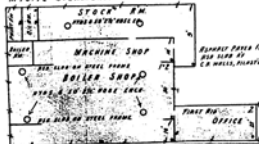


507

BORDER

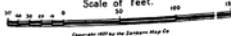
511

EASTERN GAS & FUEL ASSOCIATES
MYSTIC STEAMSHIP DIV.



505

Scale of Feet.



B o s t o n H a r b o r



B
o
s
t
o
n
H
a
r
b
o
r

SCATTERED PILES OF LUMBER

PLANK WHARF

PLANK WHARF

Log Basin

THEO. M. QUINCY CO. INC.

507

BORDER

WHITE ST.

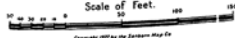
511

EASTERN GAS & TUBE ASSOCIATES
MYSTIC STEAMSHIP DIV.



505

Scale of Feet.



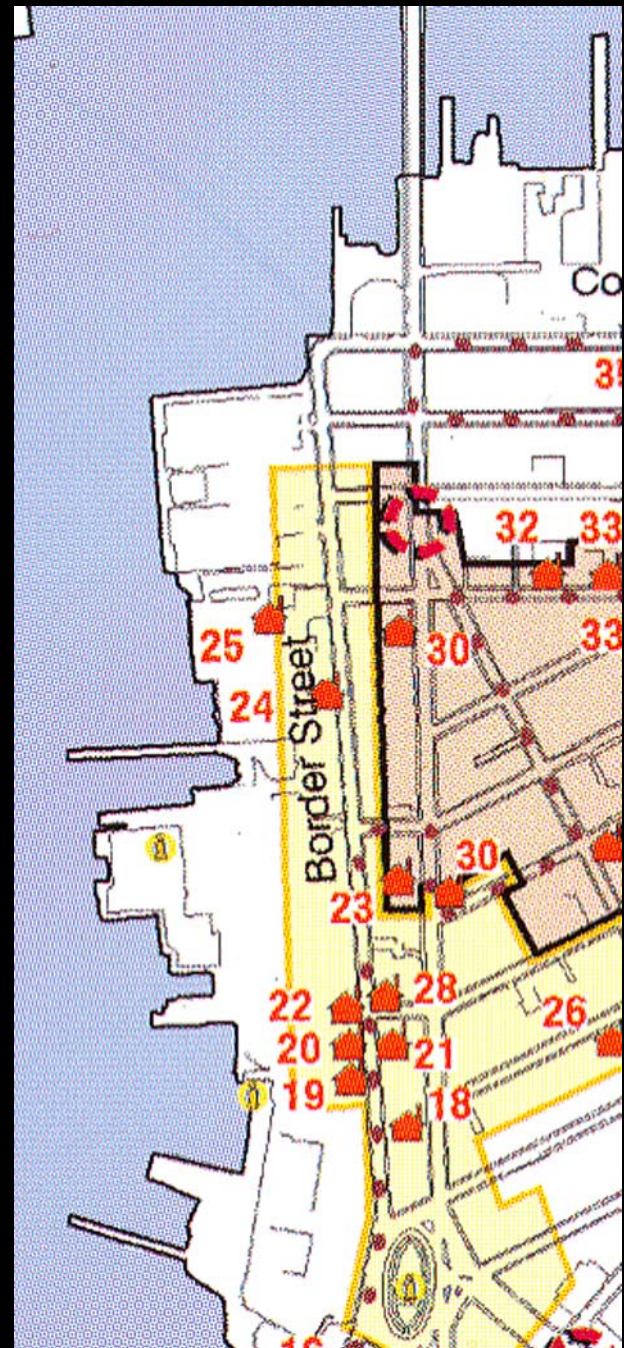


Heritage Trail

Westerbeke Marine
Industries Supplies

McKay Shipyards

Central East Boston



Central Square to Condor Street – Historical Sites (south to north)

I. East Boston History

Interpretive material at proposed ferry landing behind Liberty Plaza to put sites in this section and south of Central Square into context.

II. Shipping – none

III. Shipbuilding and related industries

Green's/ McKie's shipyards
c. 1950 shipyard on former Boston Dye Wood site
McKay's shipyard and monument
Subsequent shipyards on McKay site (Brooks, General Ship)
Westerbeke Marine Industrial Supplies
Curtis's/ Smith & Townsend's shipyards

IV. Other industries

Central Iron Foundry/ Bertelson & Peterson/ Bromfield Manufacturing Co.
Lumber and coal wharves on Harborwalk behind Shaws
Sturtevant & Edwards oil factory
John Briggs & Co. paint factory/ Acme White Lead & Color Works
Boston Dye Wood & Chemical Co./ New York & Boston Dye Wood Co./ Middlebrook Wool Combing Co.
Sturtevant lumber wharf/ Wellman Hall & Co. lumber wharf/ Roy B. Rendle & Co. pile driving
Lumber wharf on McKay site
Lumberyards on Shore Plaza East site

V. Railroads

West End Street Railway car house & blacksmith shop

VI. Ferries and tunnels – none

VII. Immigration – none