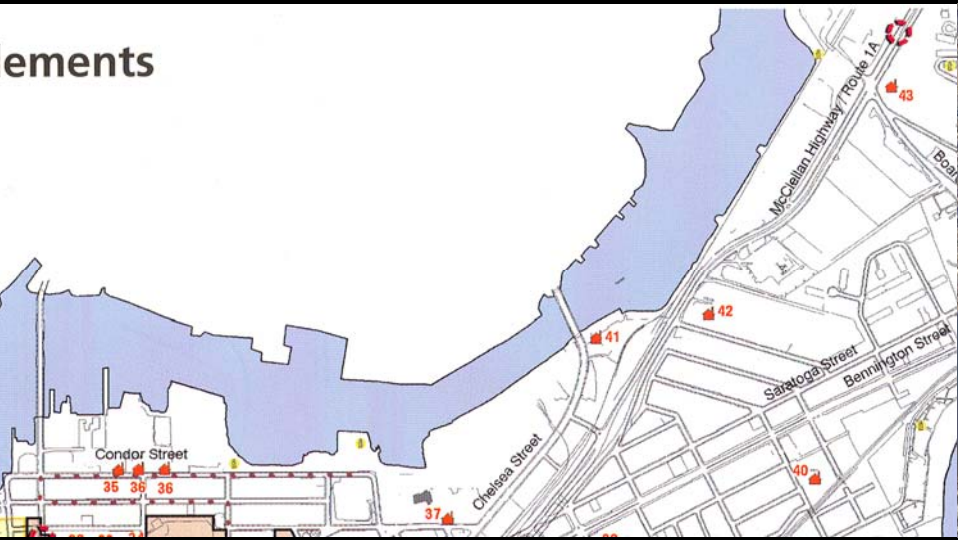
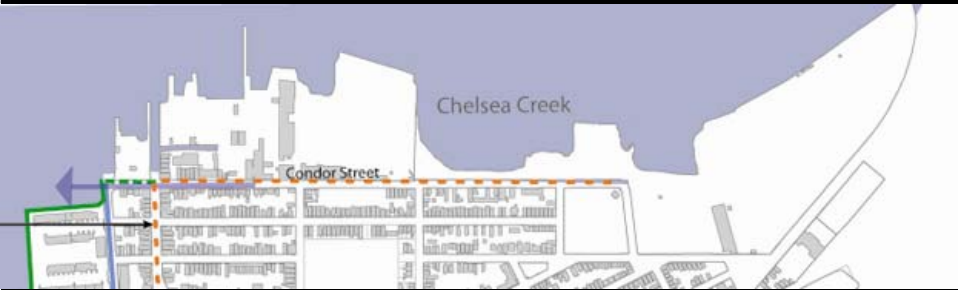
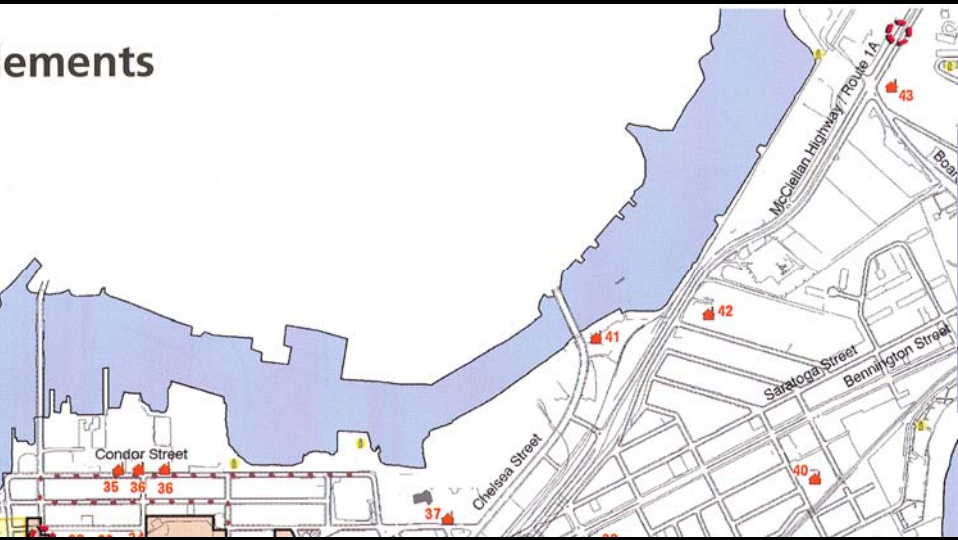




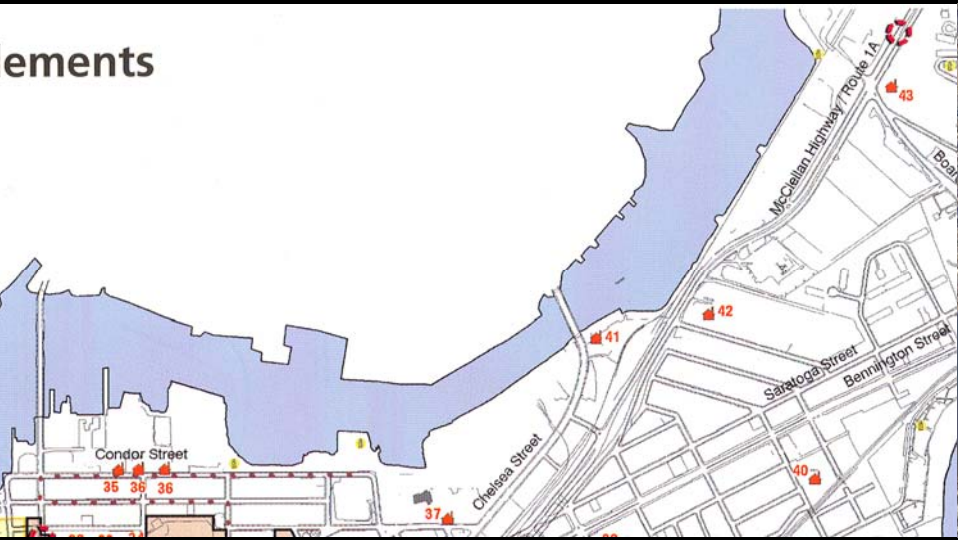
ements



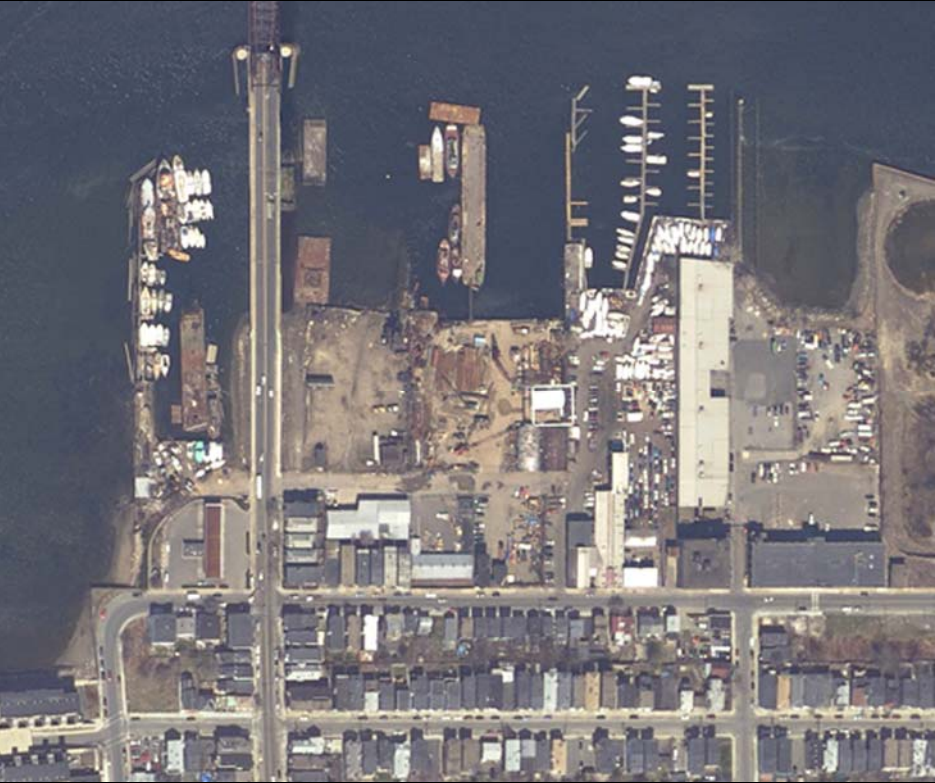
ements

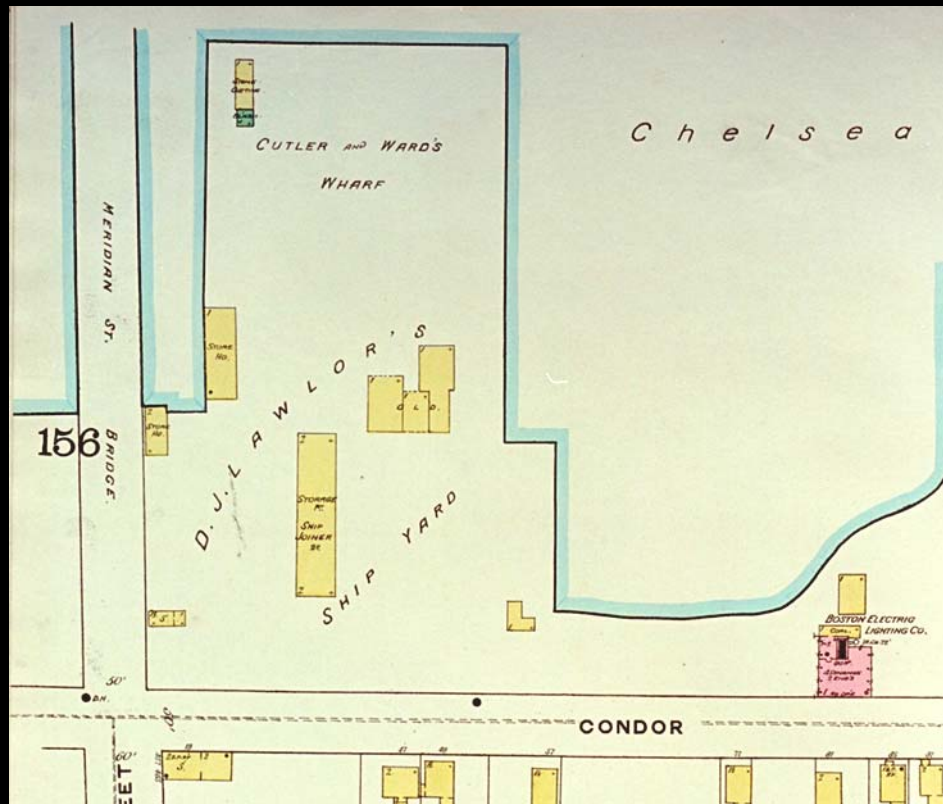


# lements

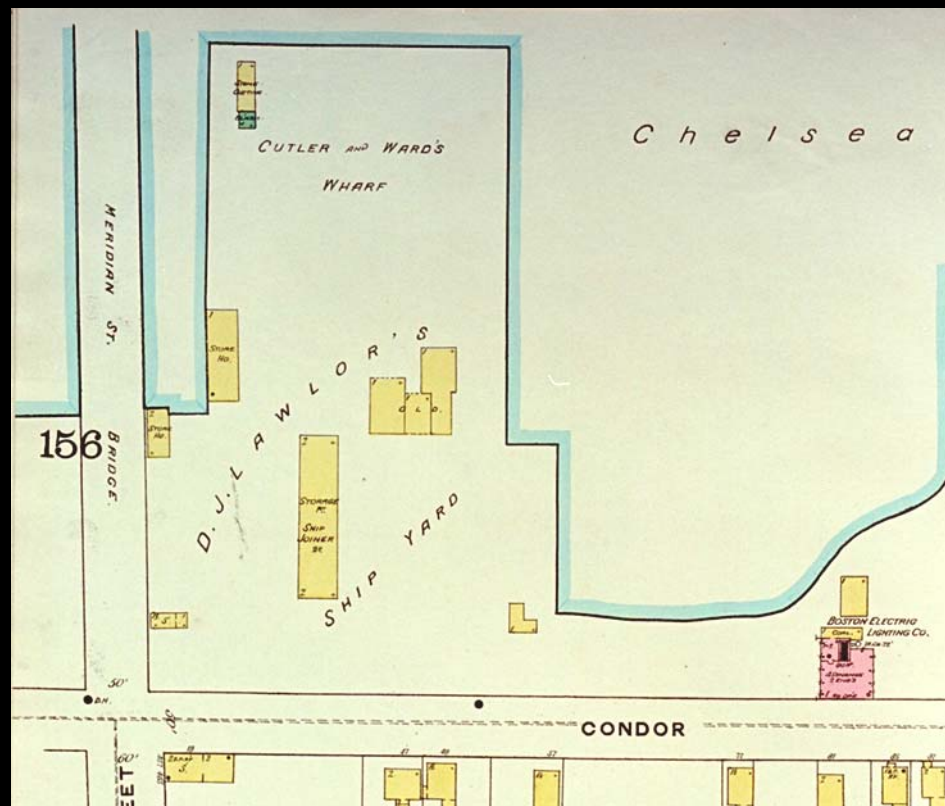
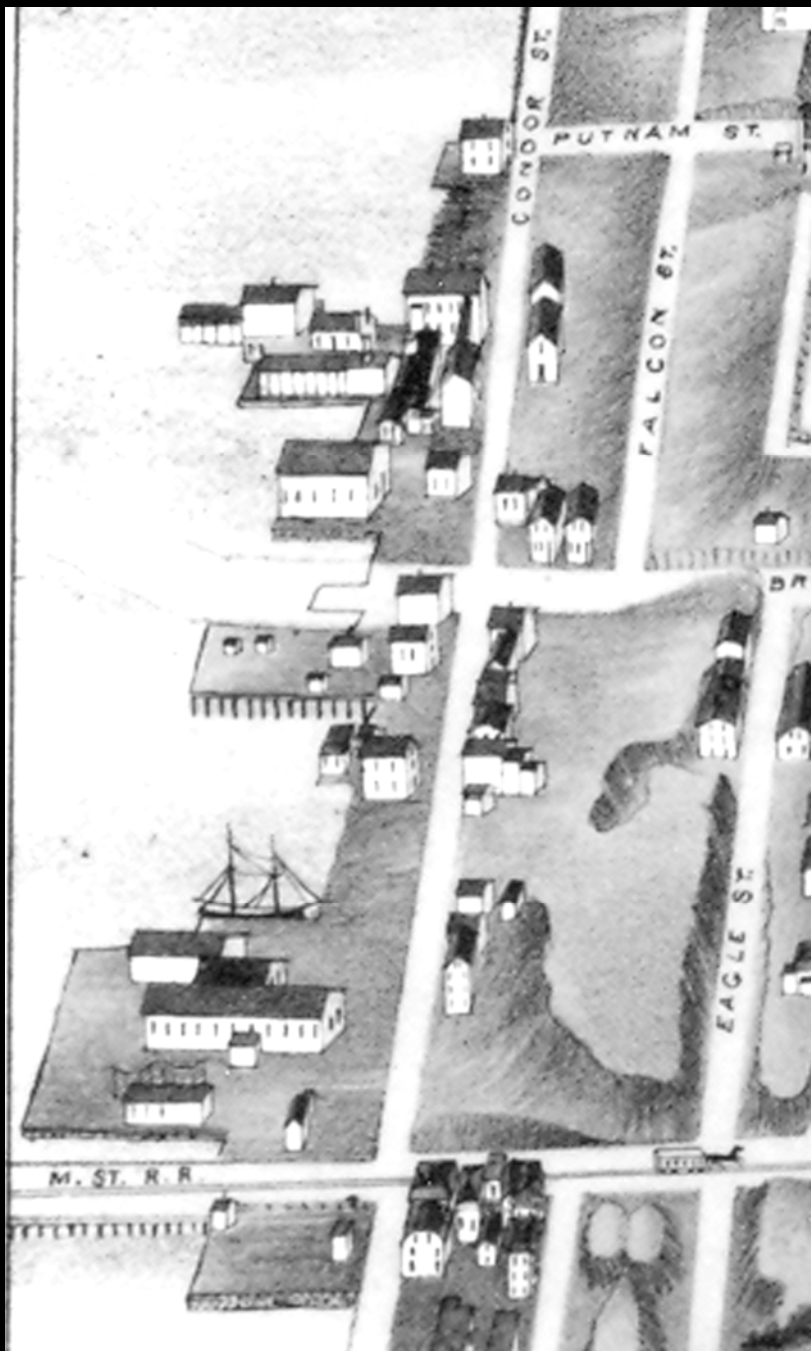
















E L I S B E R I A

MERIDIAN ST. BRIDGE TO CHURCH.  
(Merrill's Survey Shows of 1861)

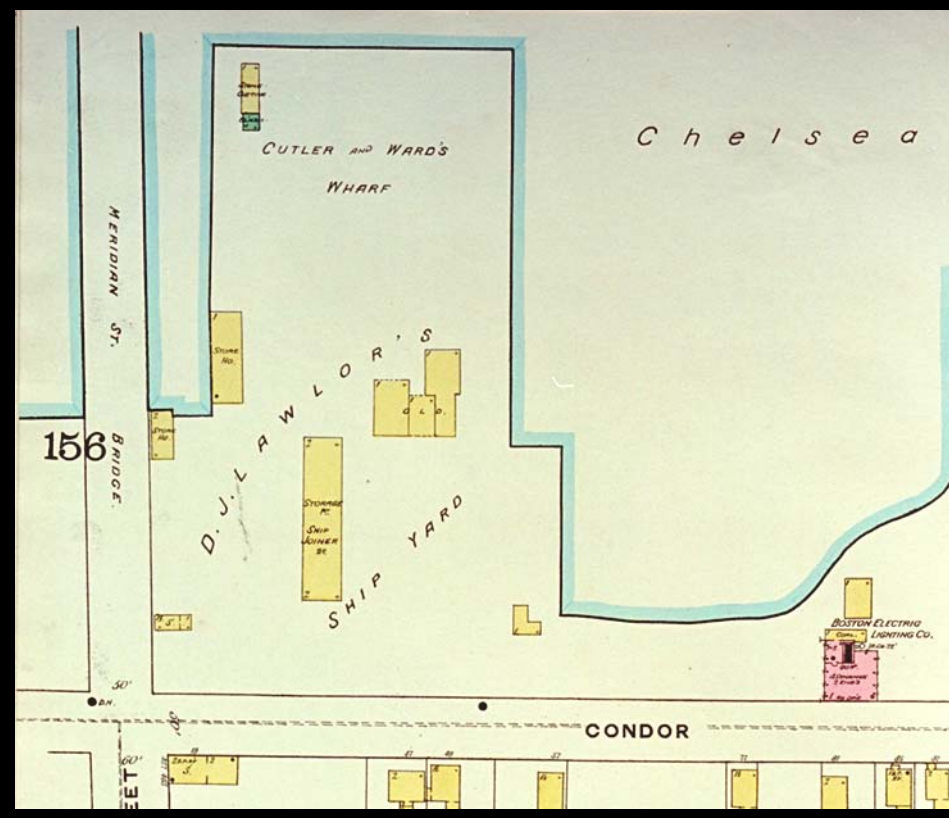
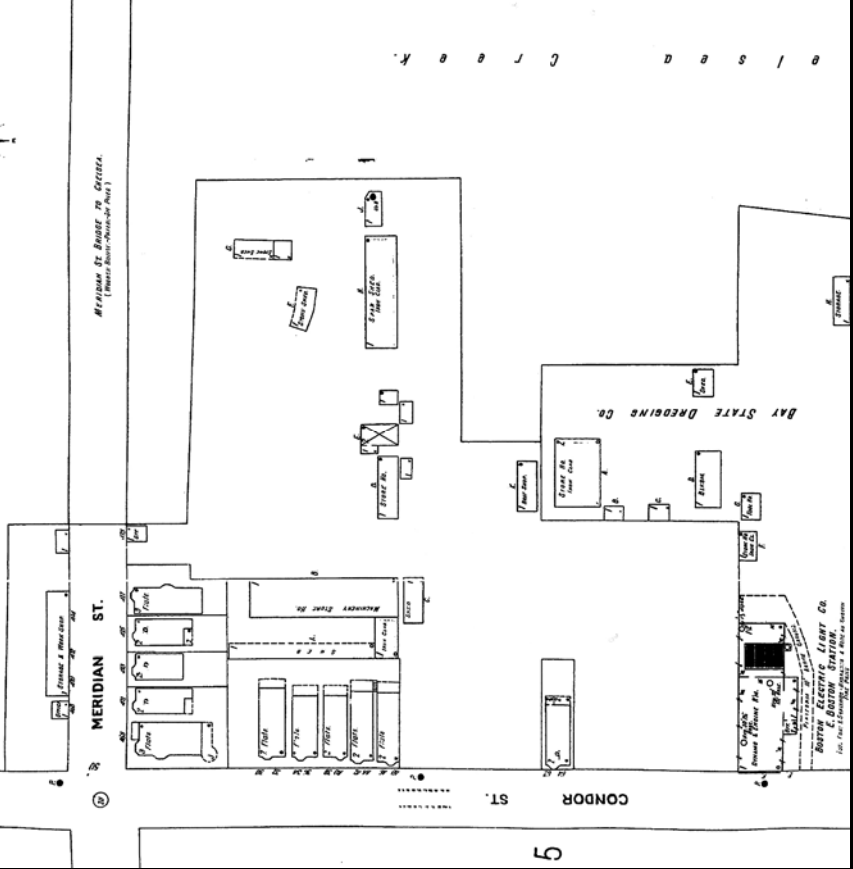
MERIDIAN ST.

CONDOR ST.

9

BAY STATE DRESSING CO.

BOSTON ELECTRIC LIGHT CO.  
BOSTON STRAITS.



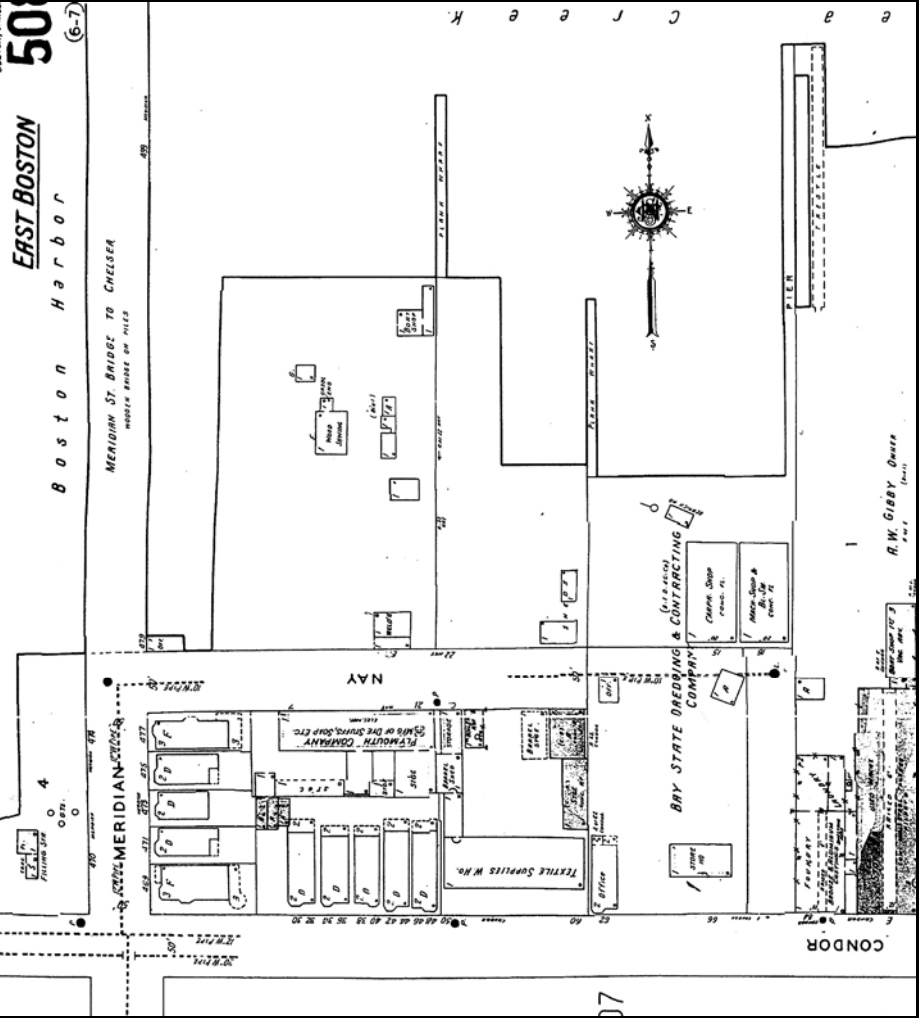




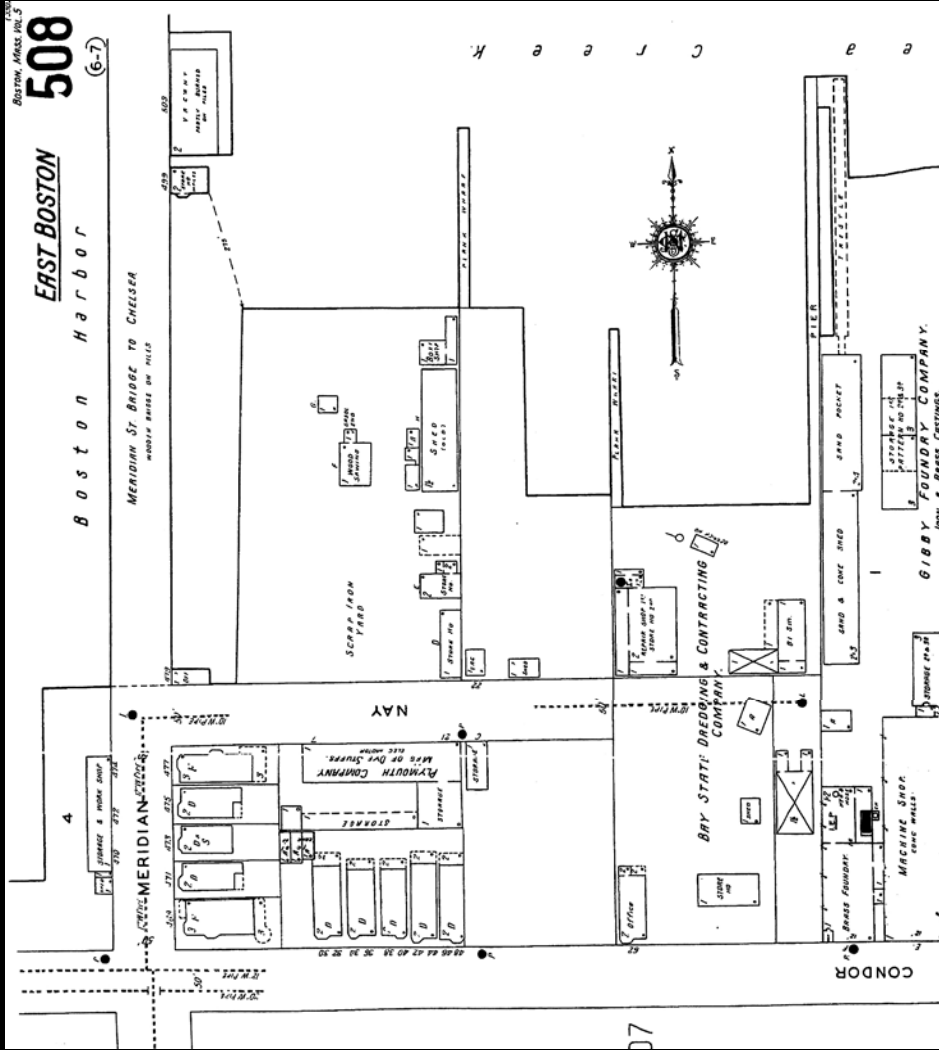


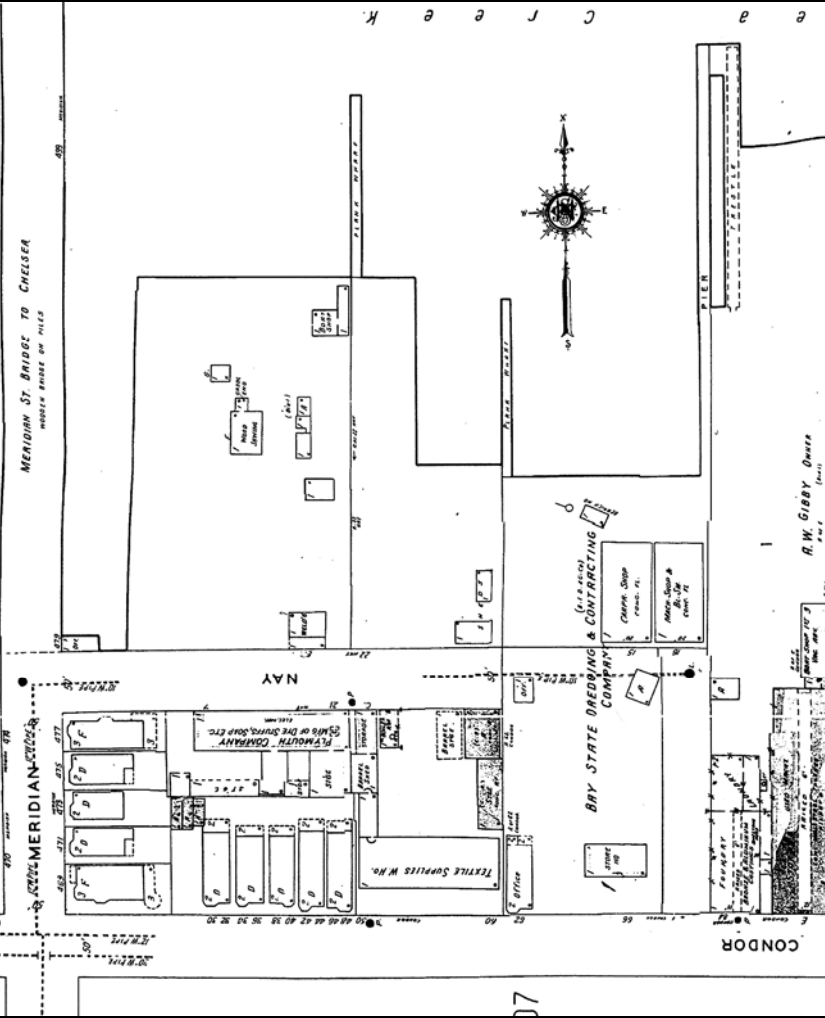


MERIDIAN ST. BRIDGE TO CHELSEA  
WHEELS BRIDGE ON PILES



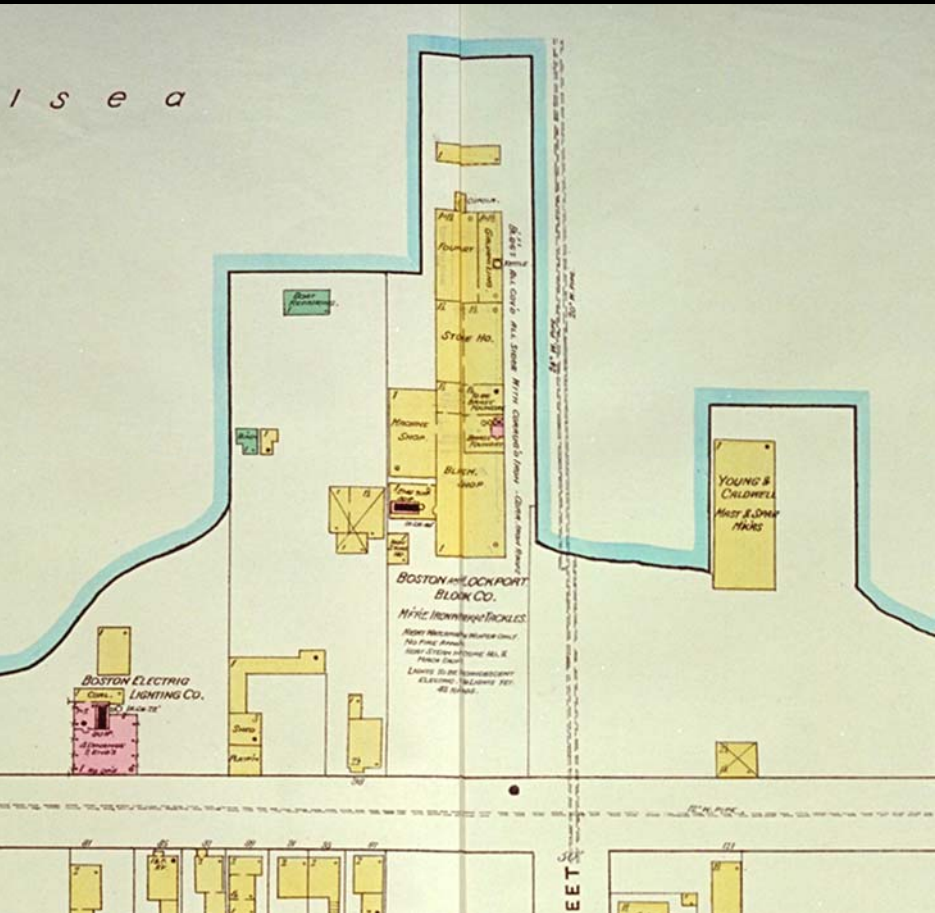
MERIDIAN ST. BRIDGE TO CHELSEA  
WHEELS BRIDGE ON PILES

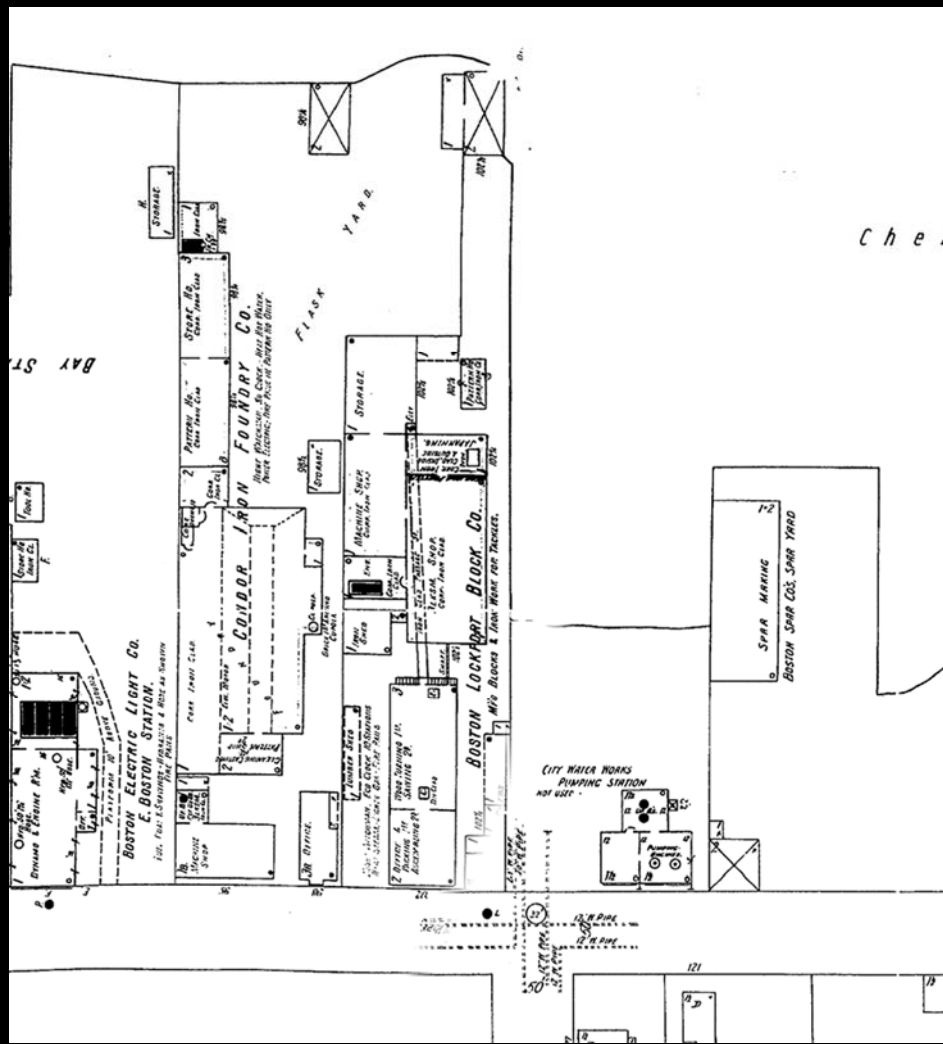
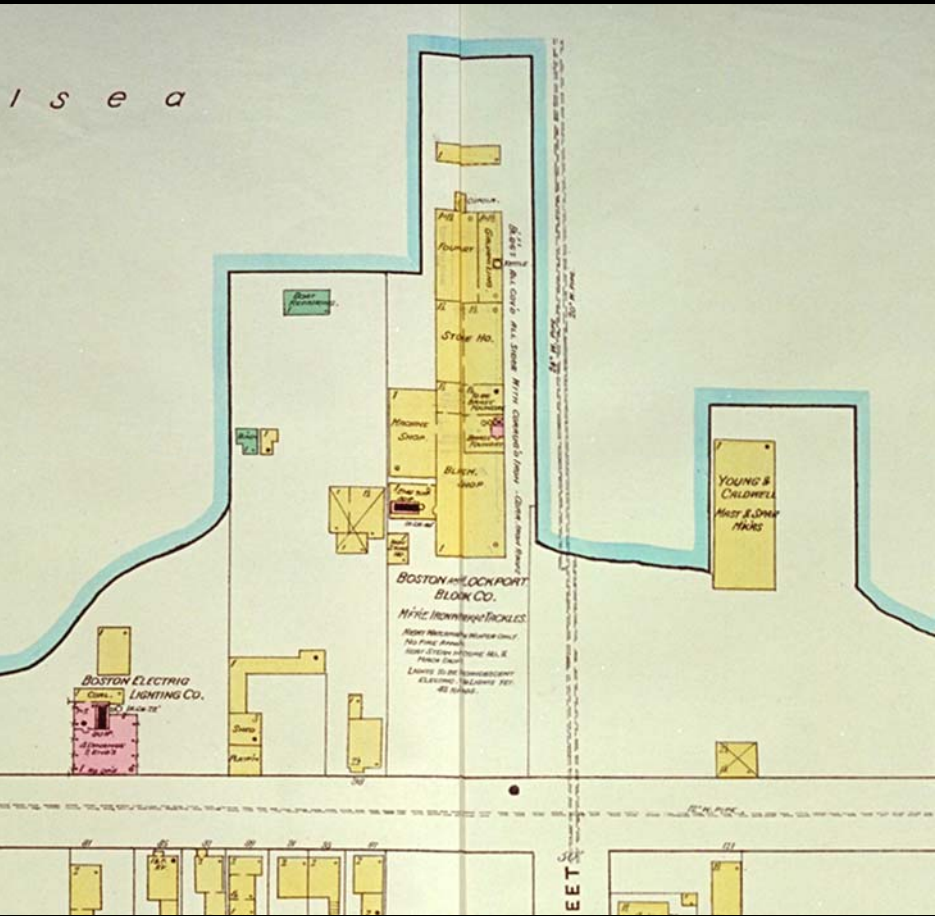




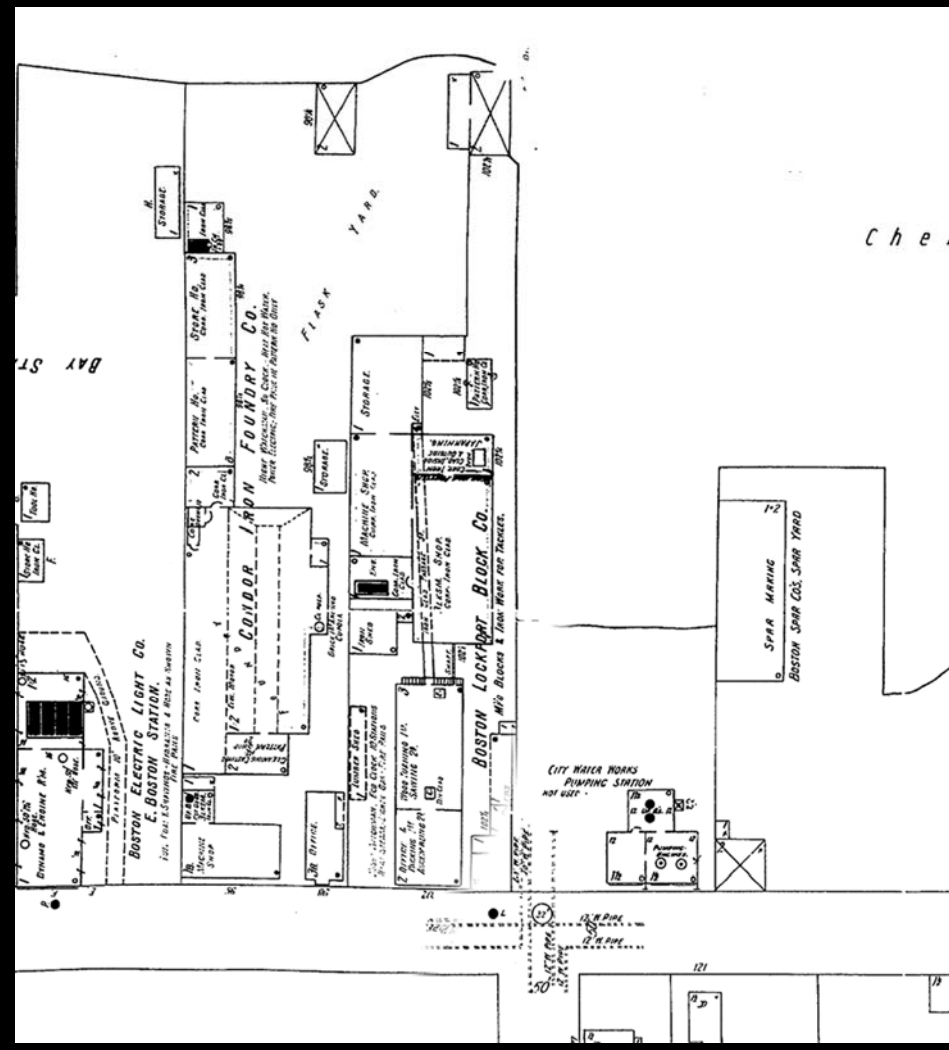
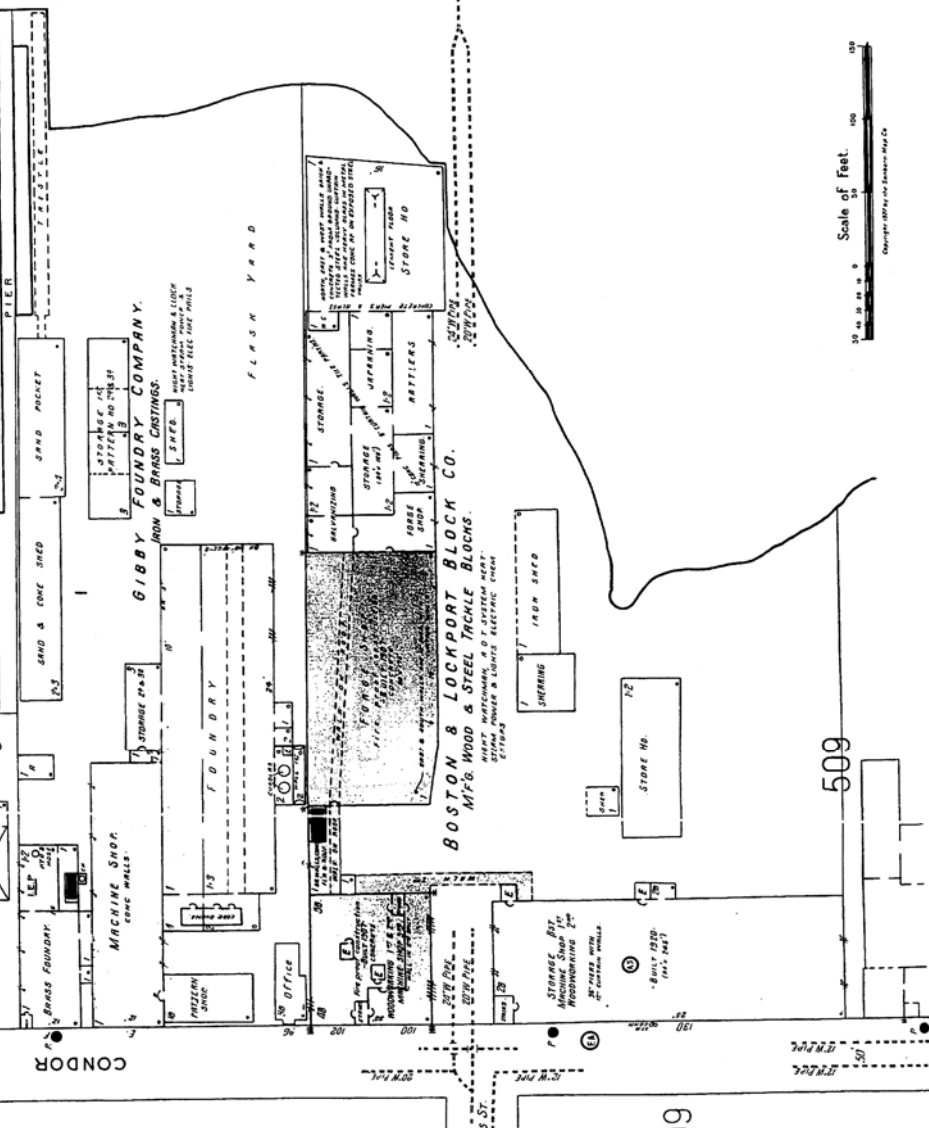
















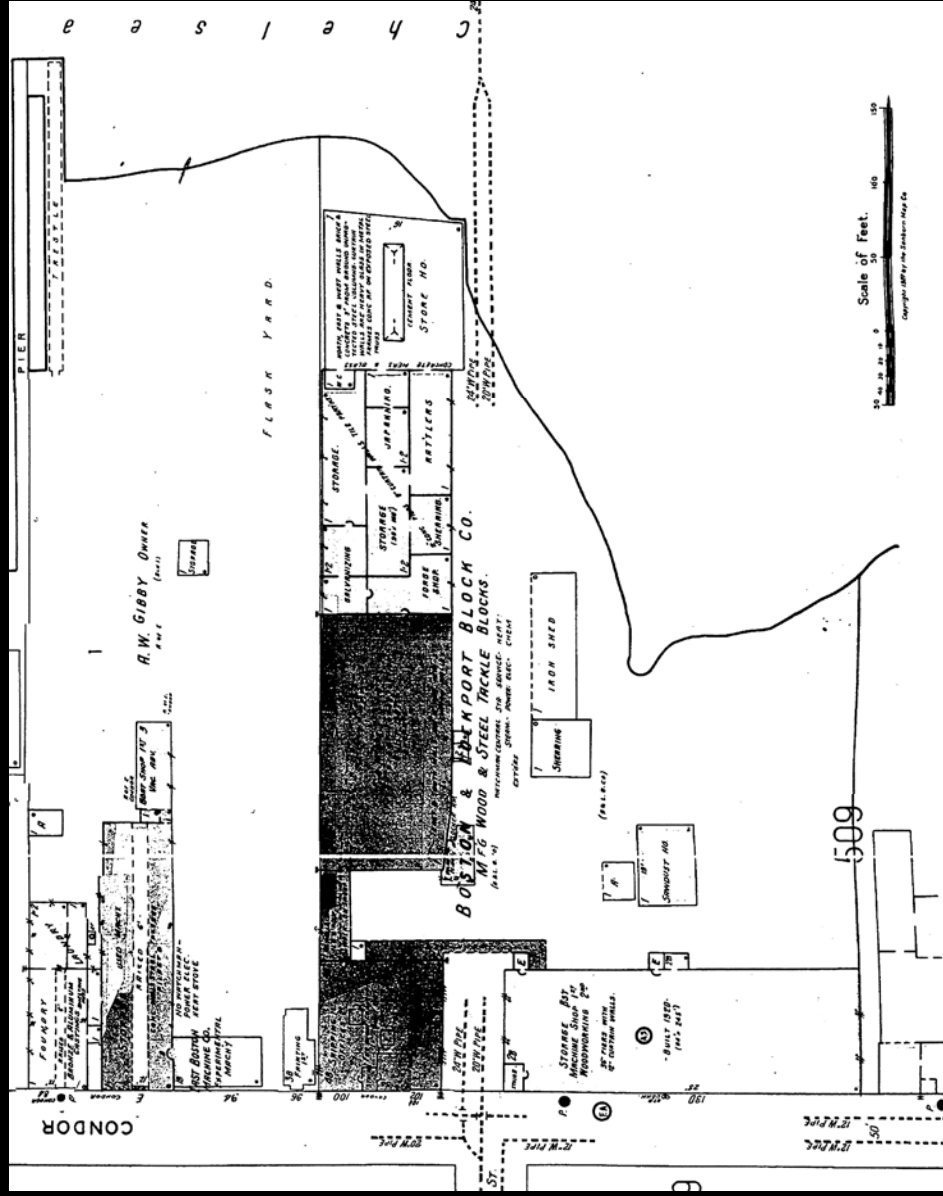
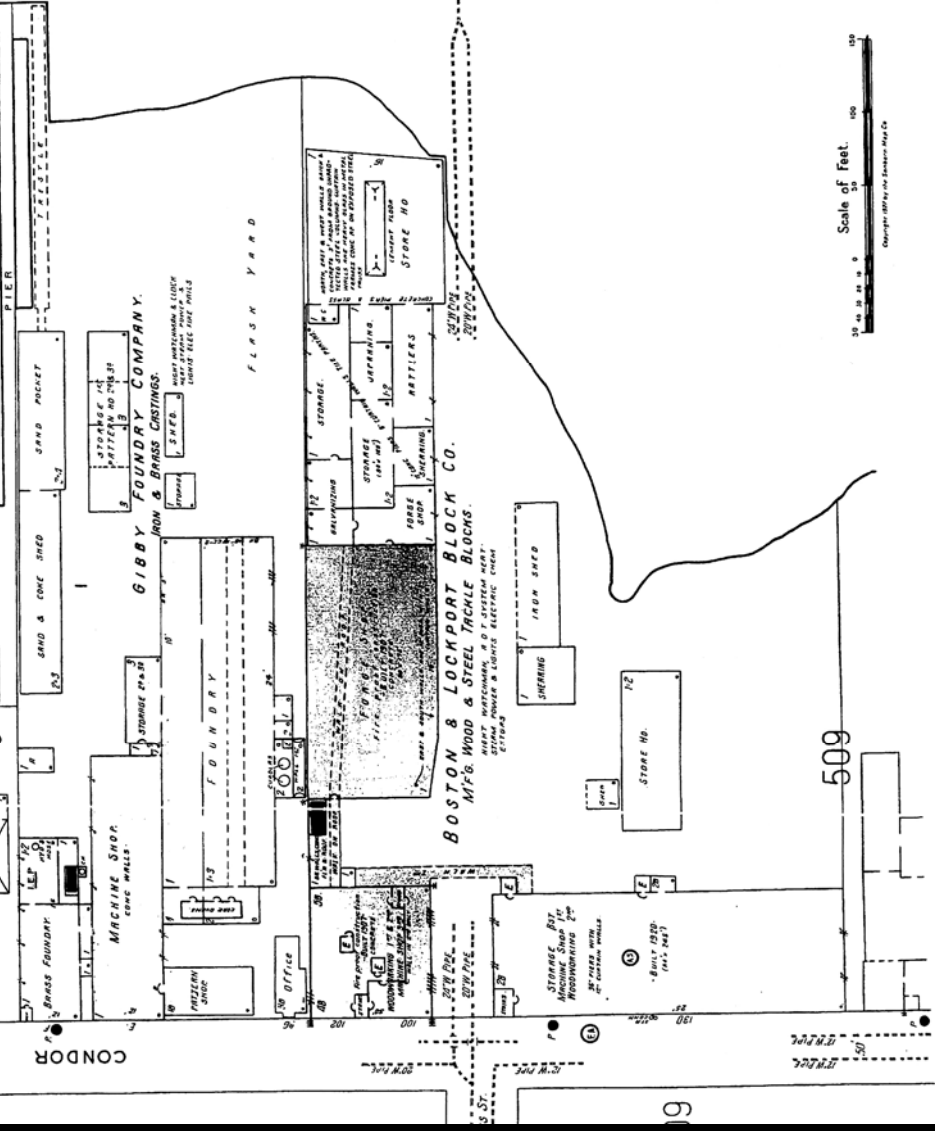




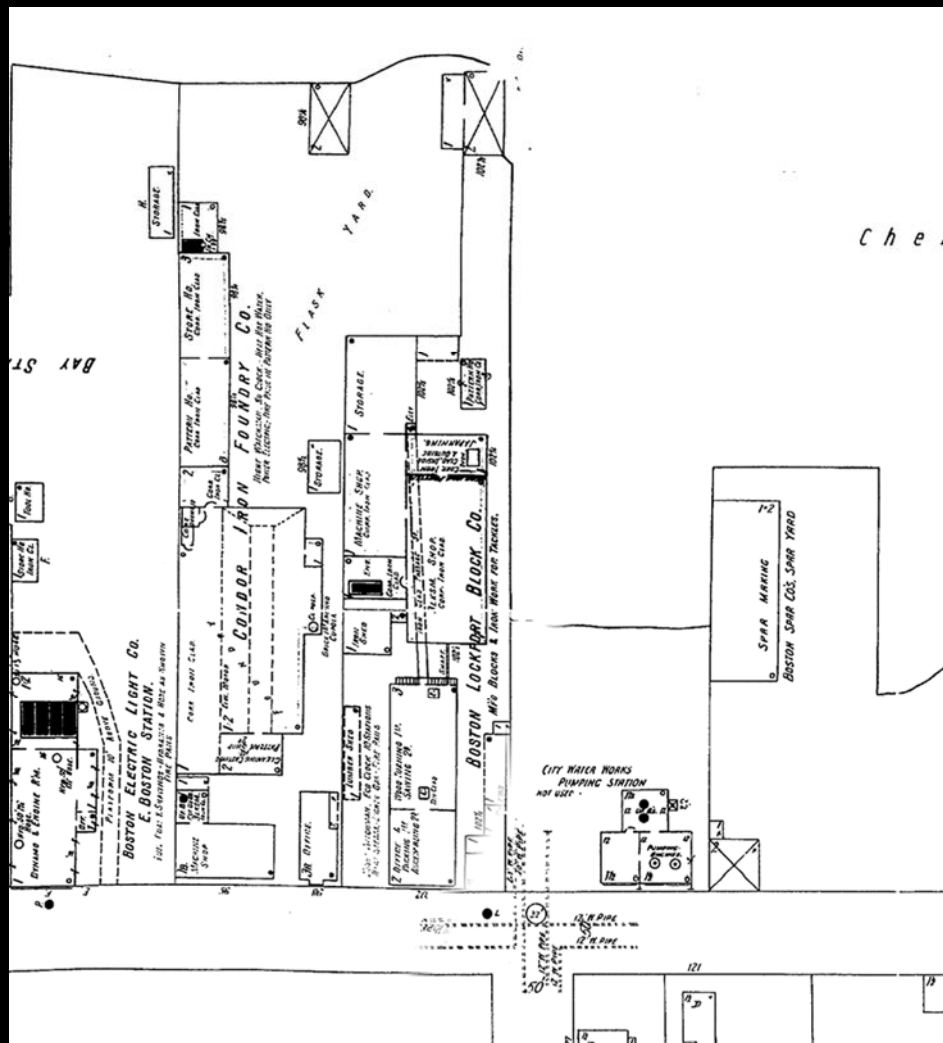
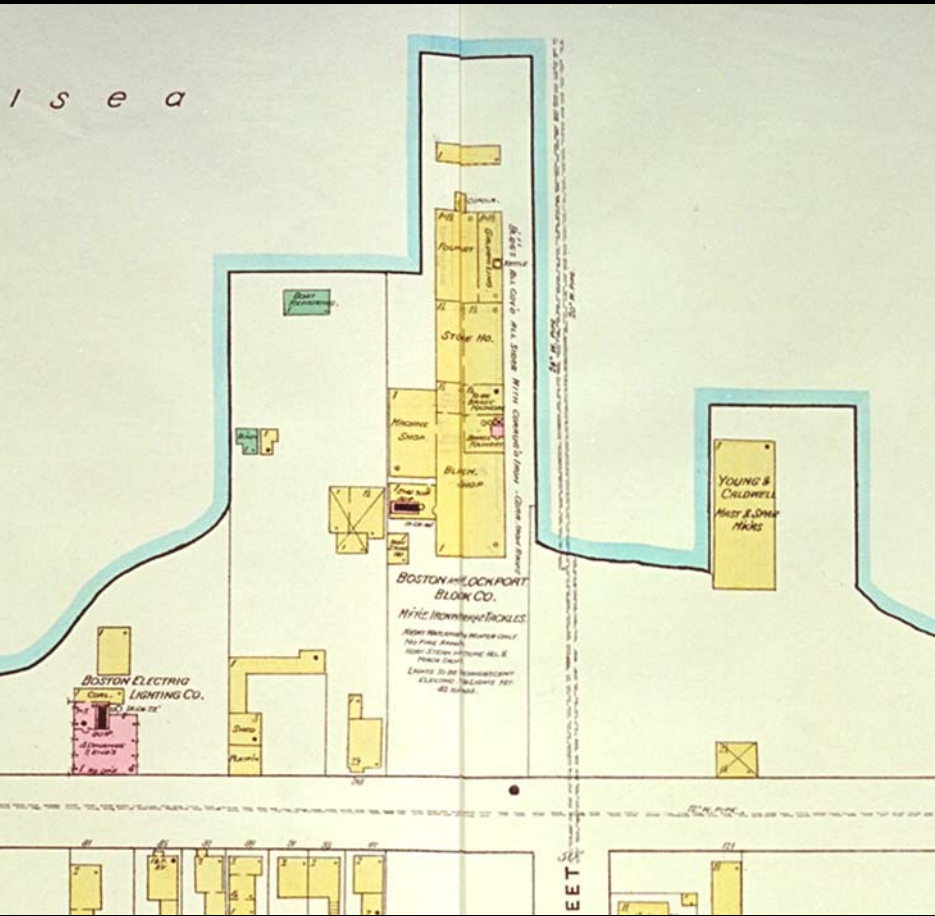




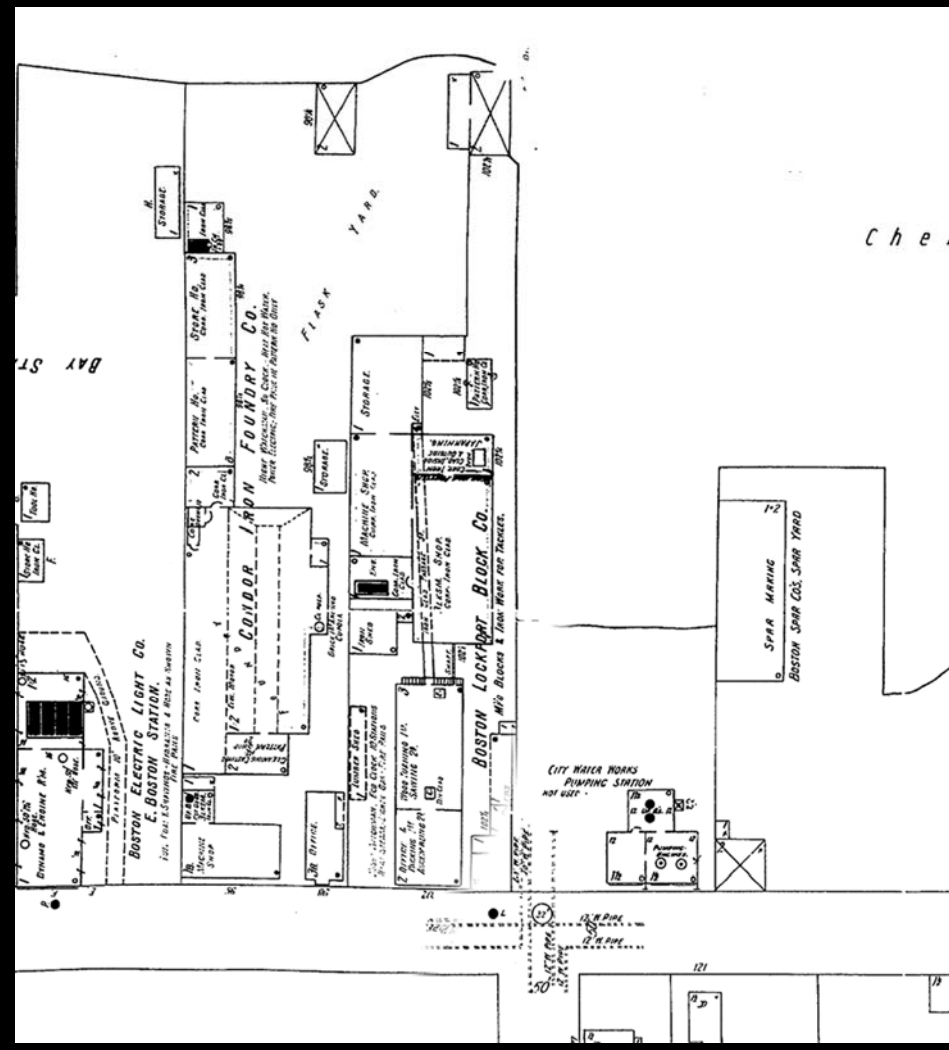
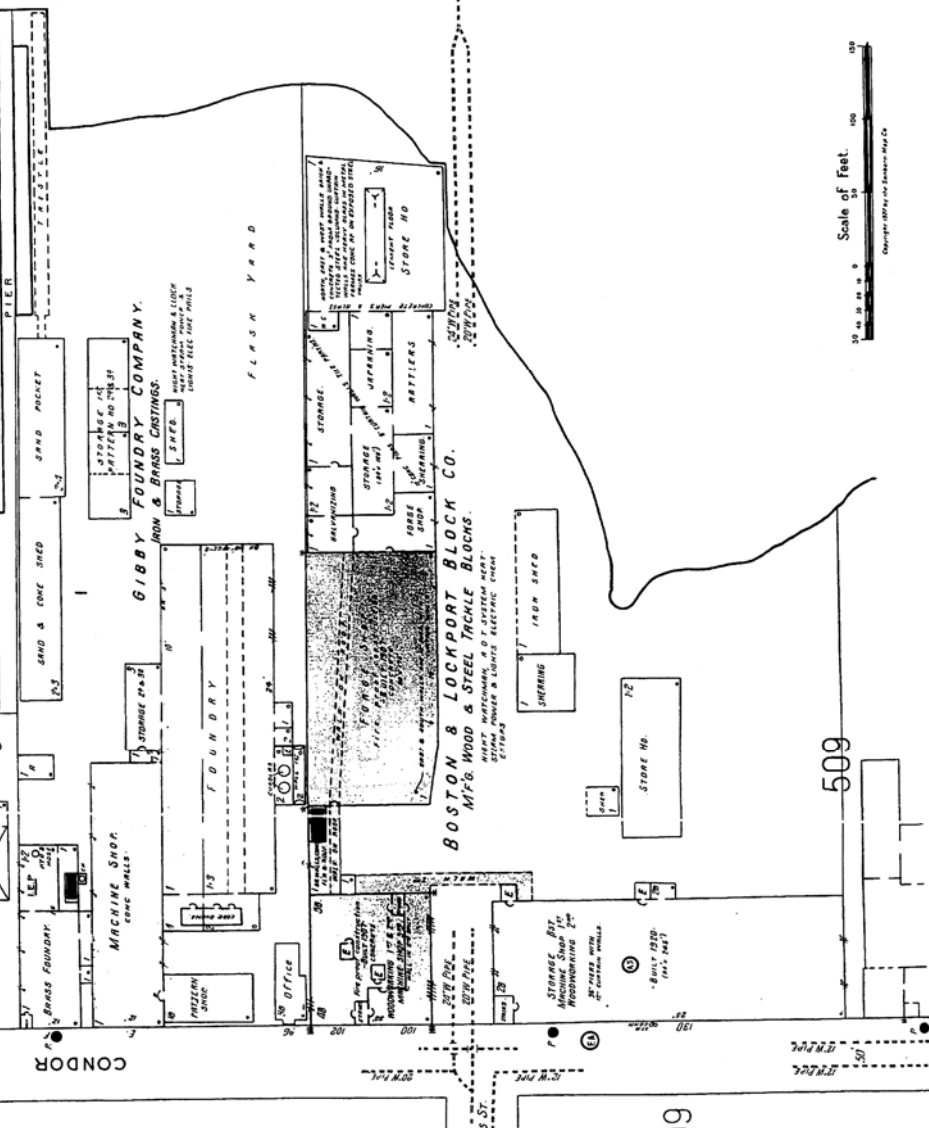












Che





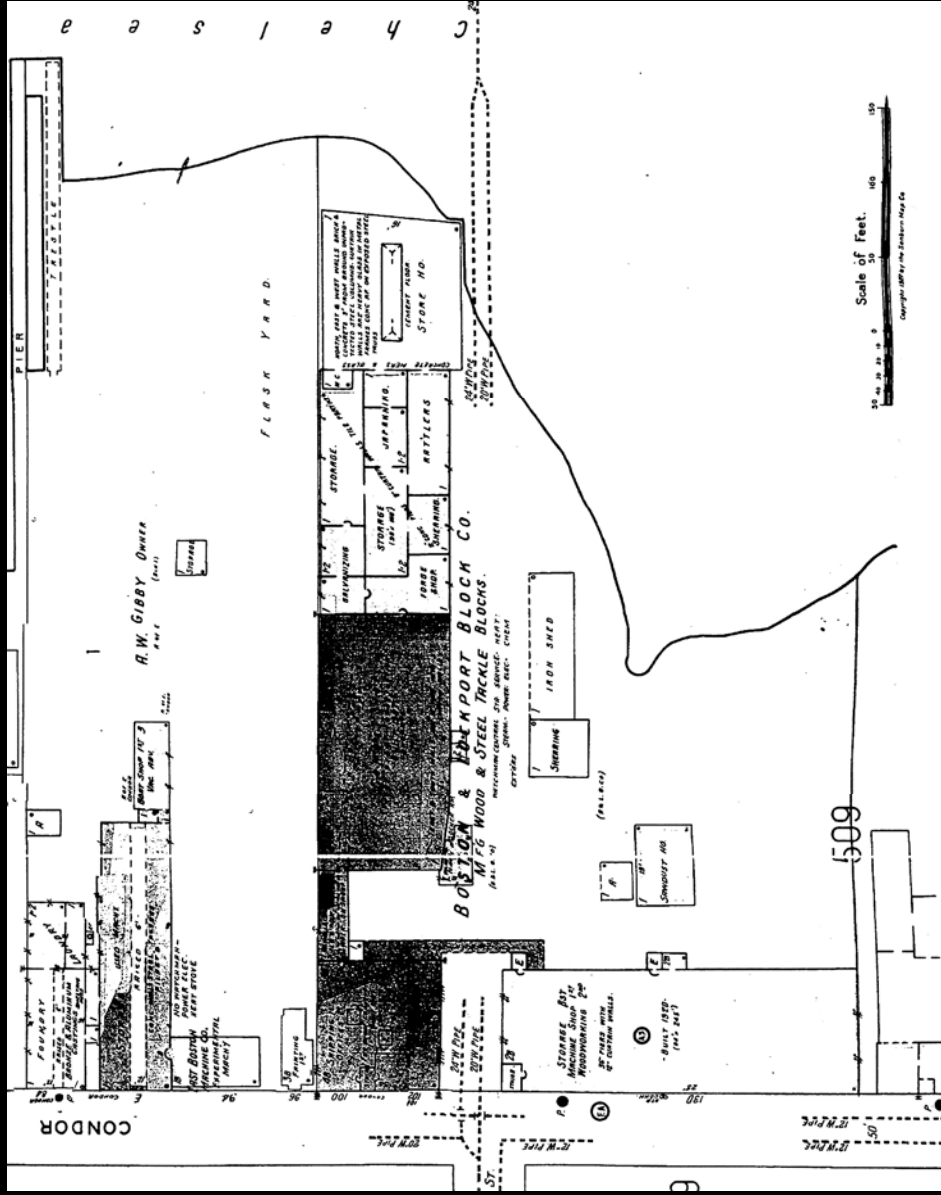






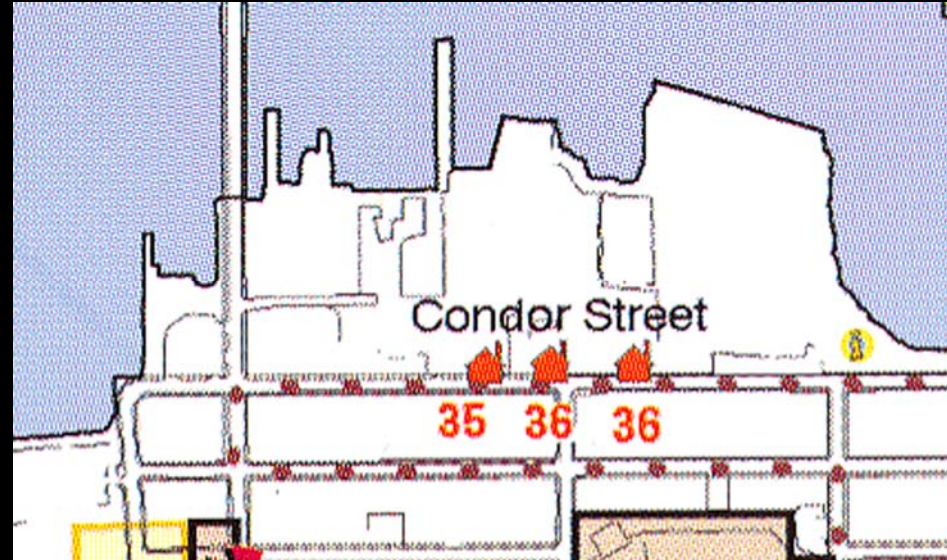




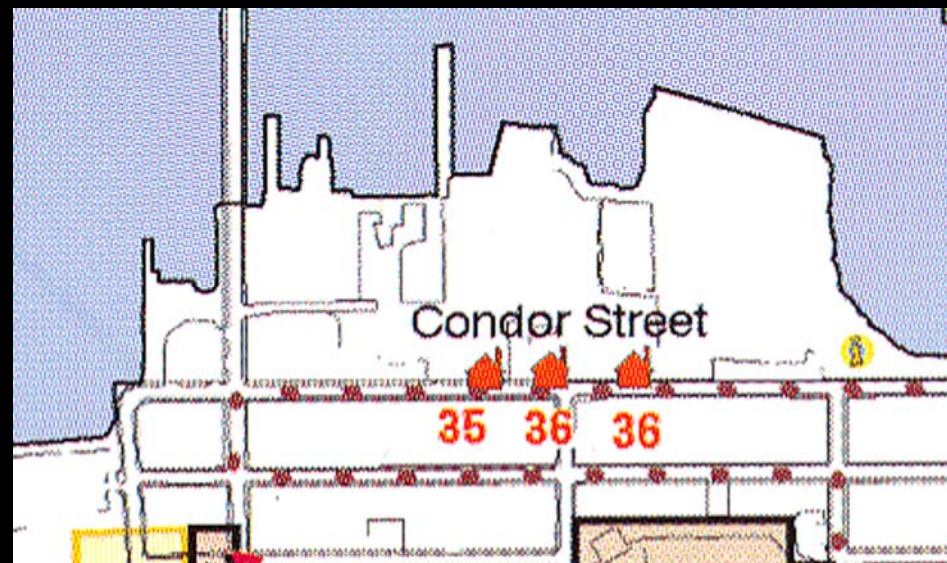
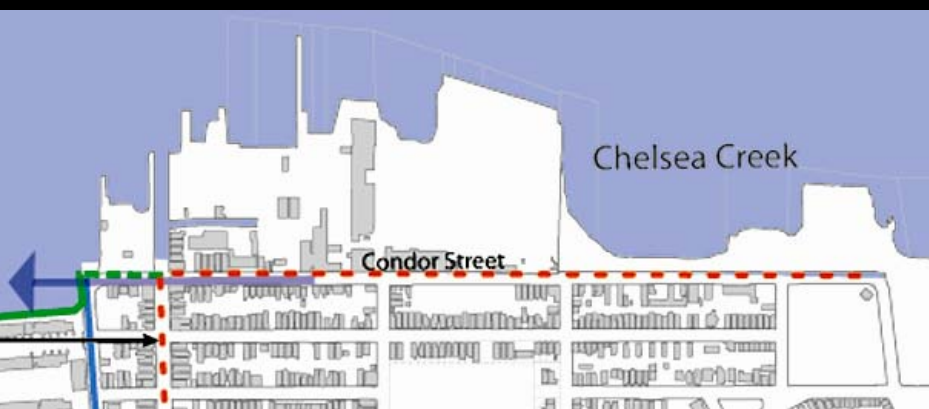


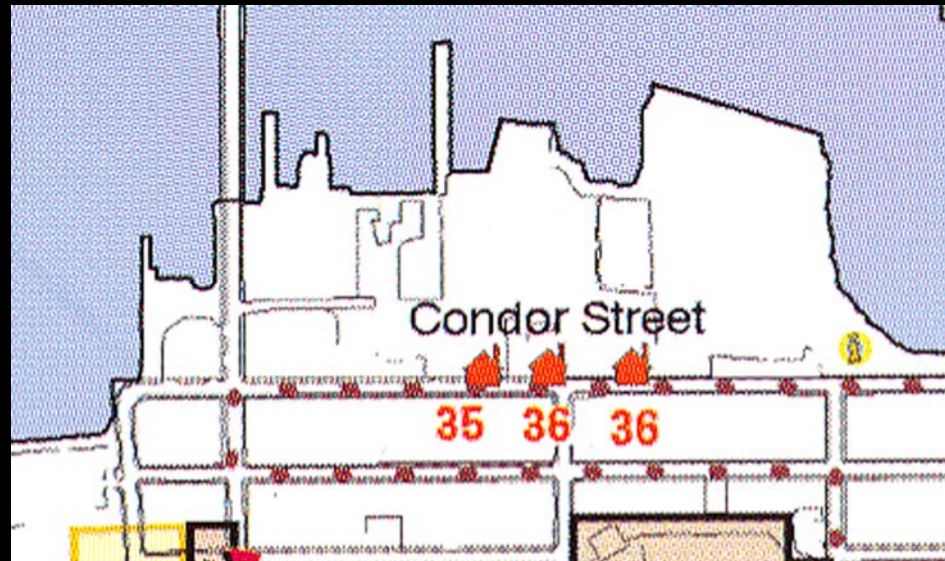


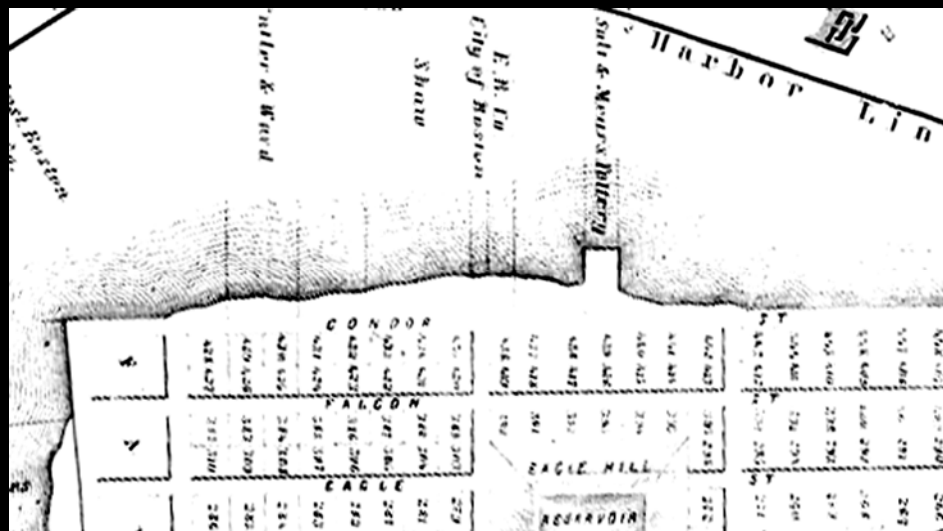




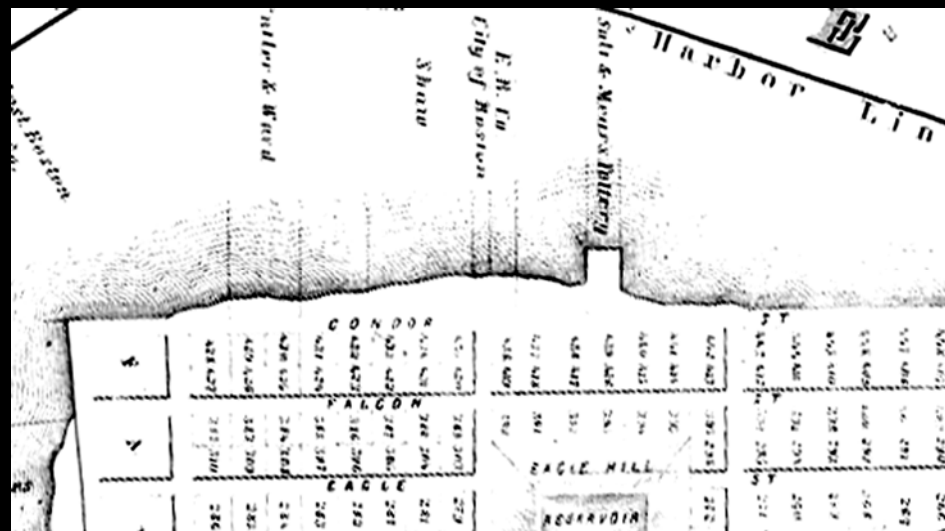
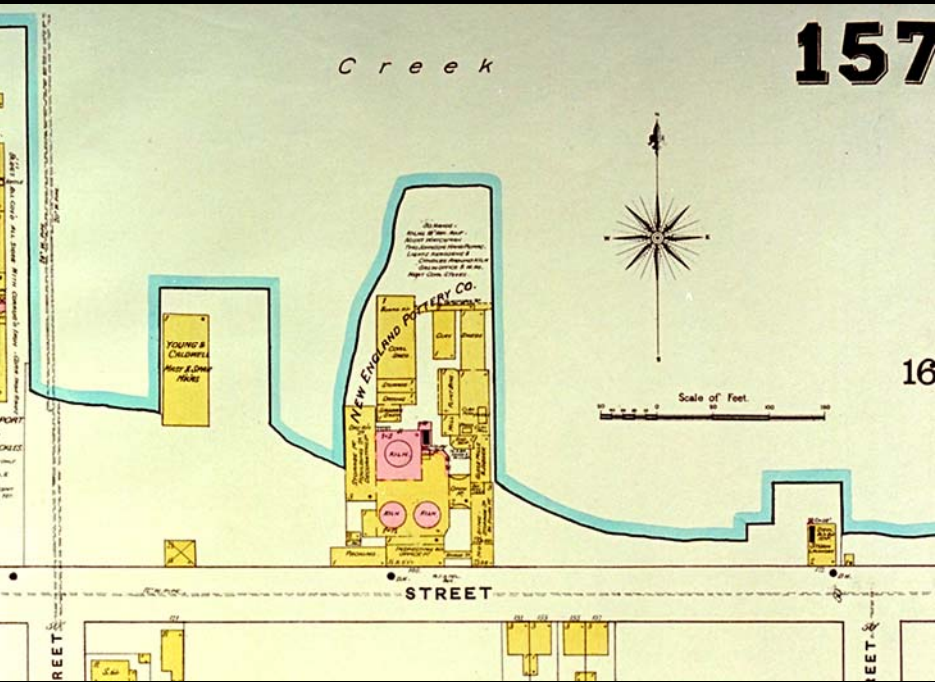


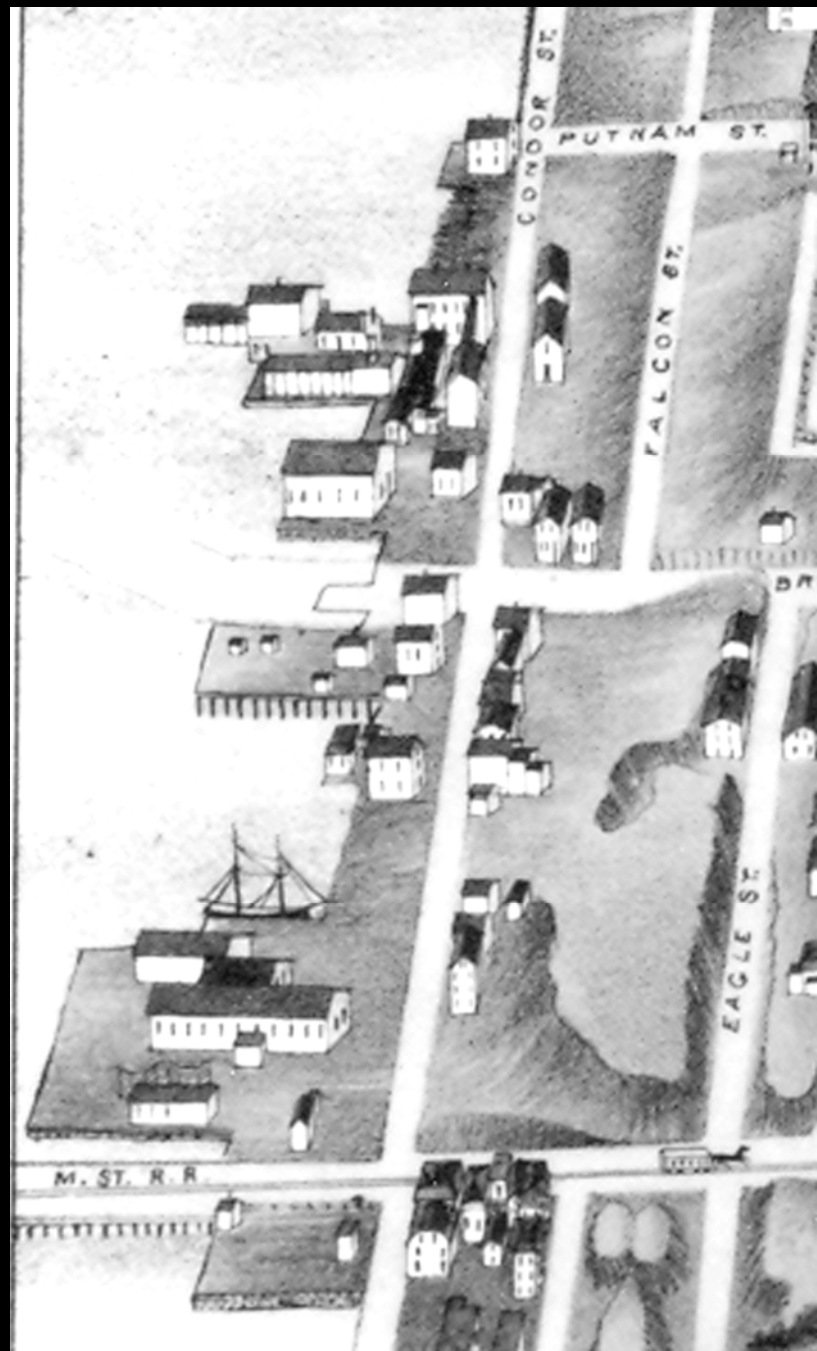
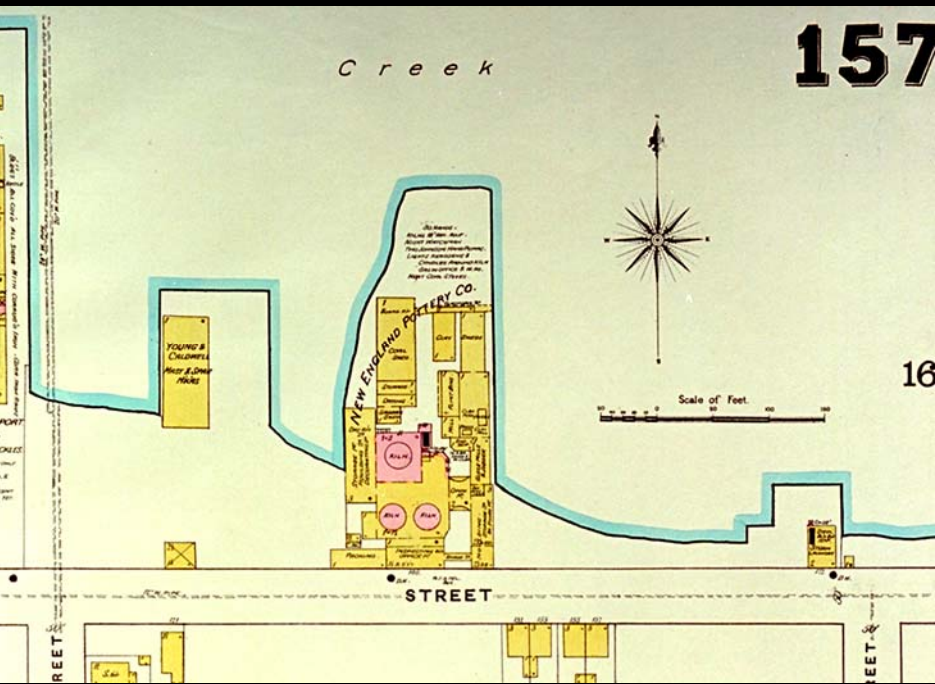


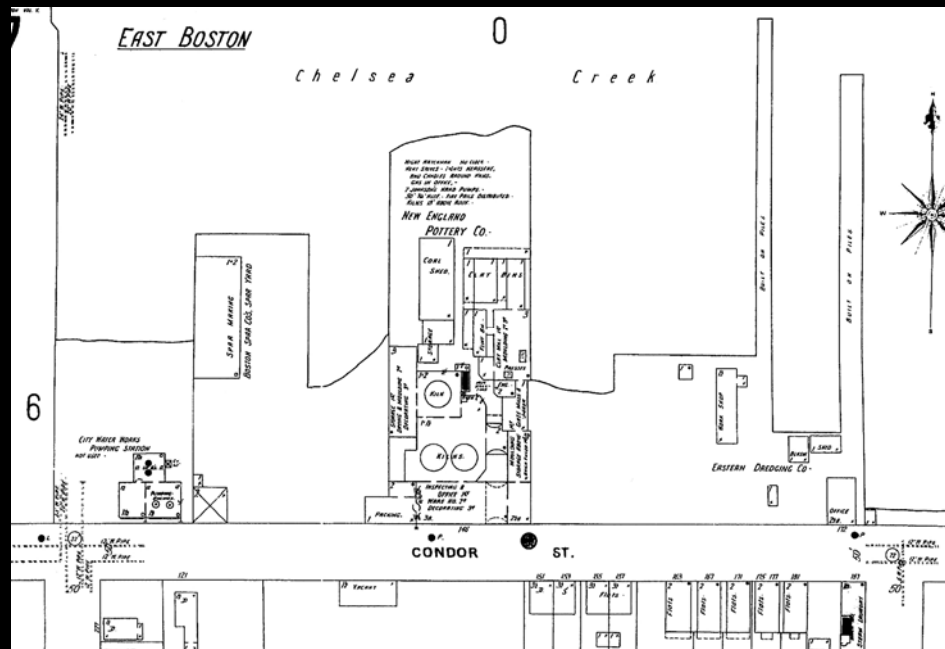
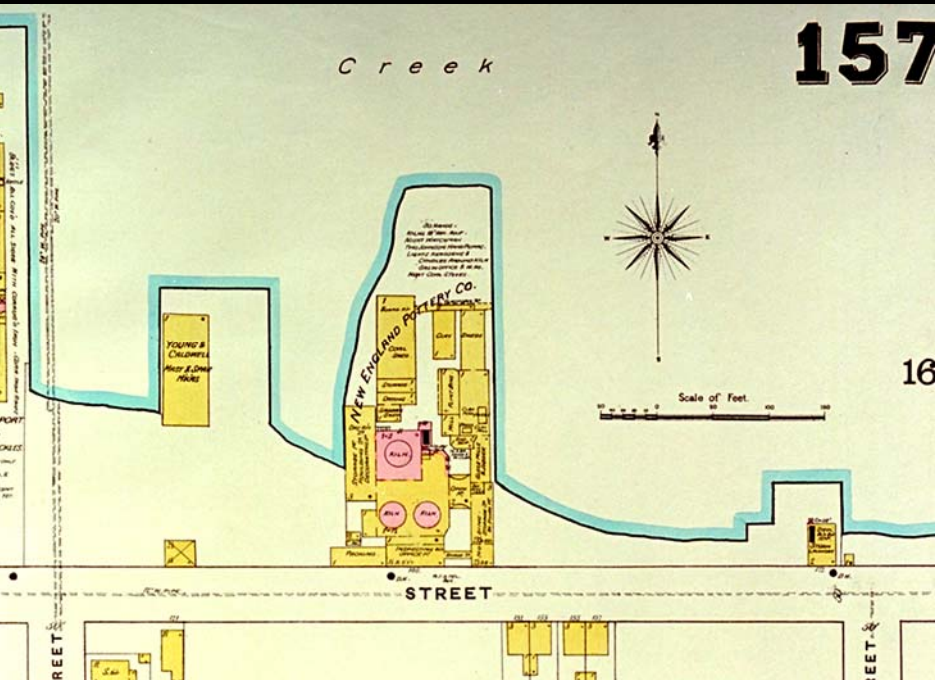














Chelsea Creek

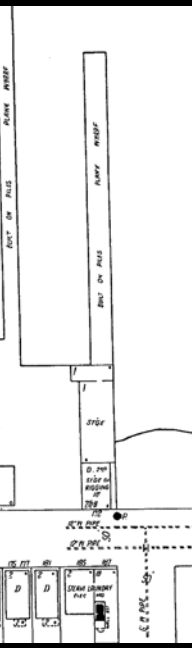
508

BOSTON POTTERY CO.  
FINE CHINA WARE

G. H. BREYMANN & BROS  
DREDGING

OFFICE

CONDOR



EAST BOSTON

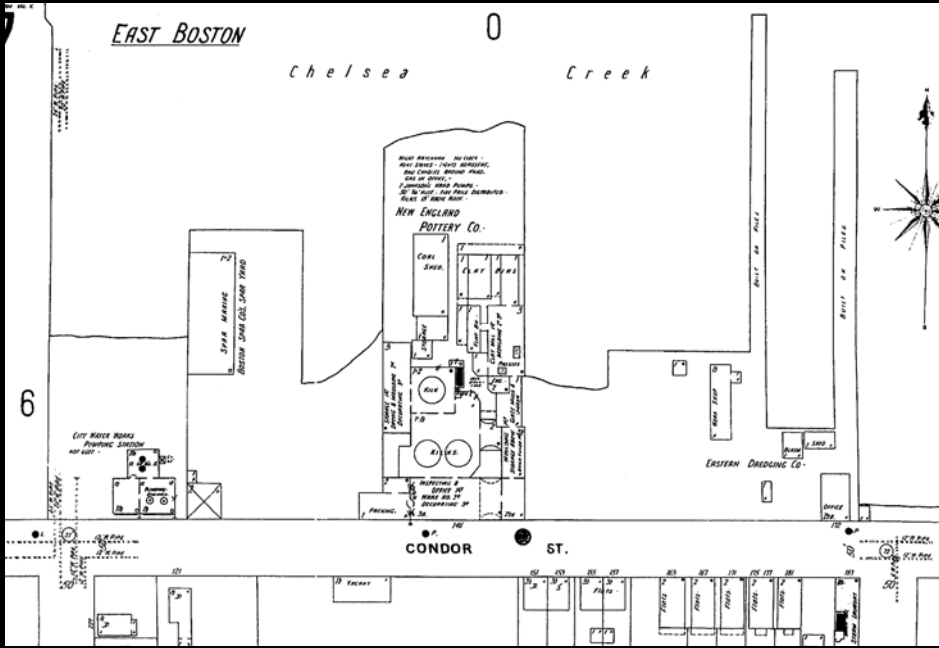
Chelsea Creek

6

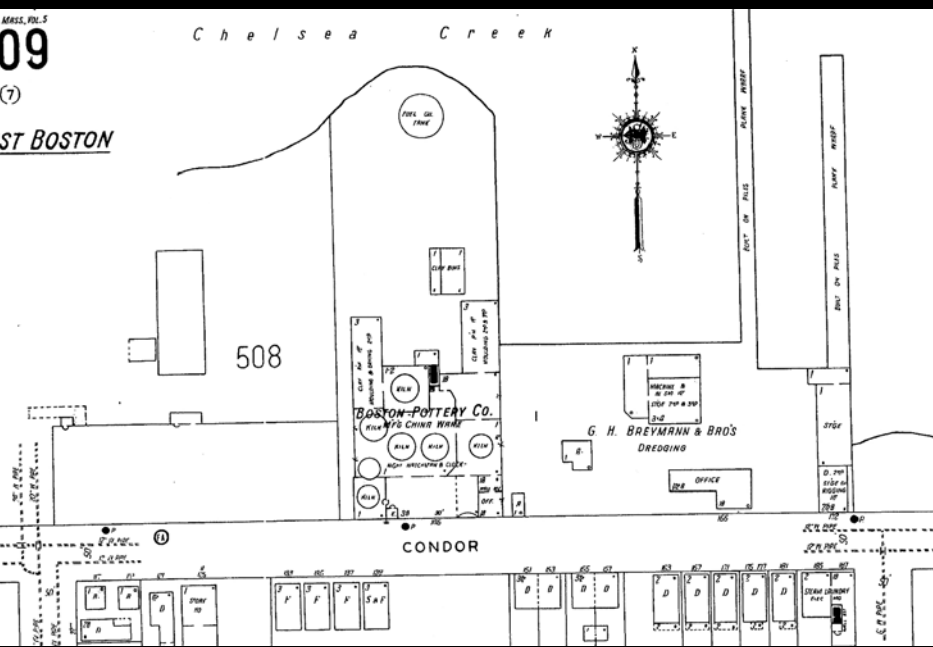
NEW ENGLAND  
POTTERY CO.

EASTERN DREDGING CO.

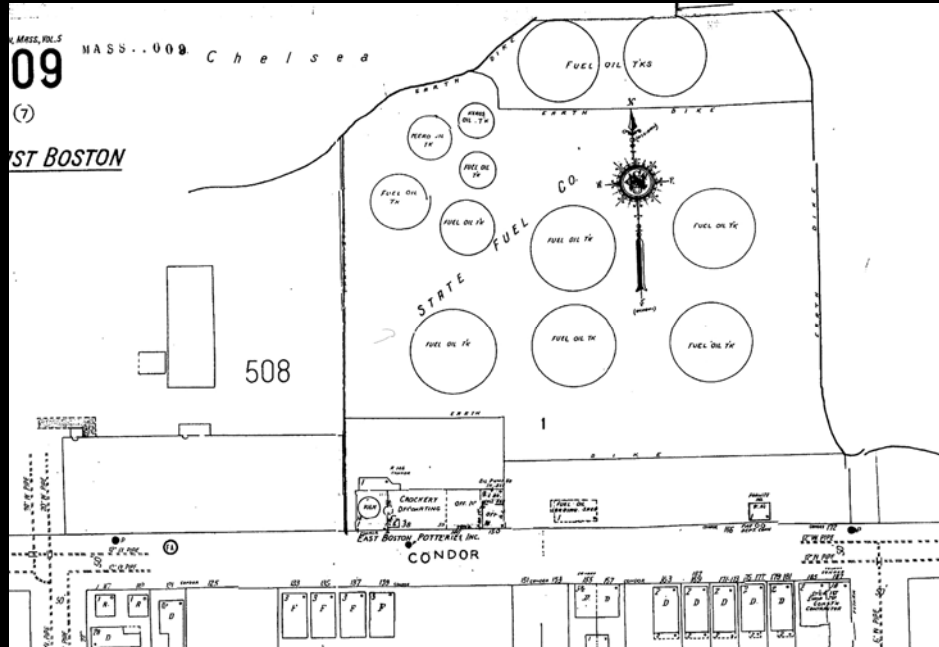
CONDOR ST.

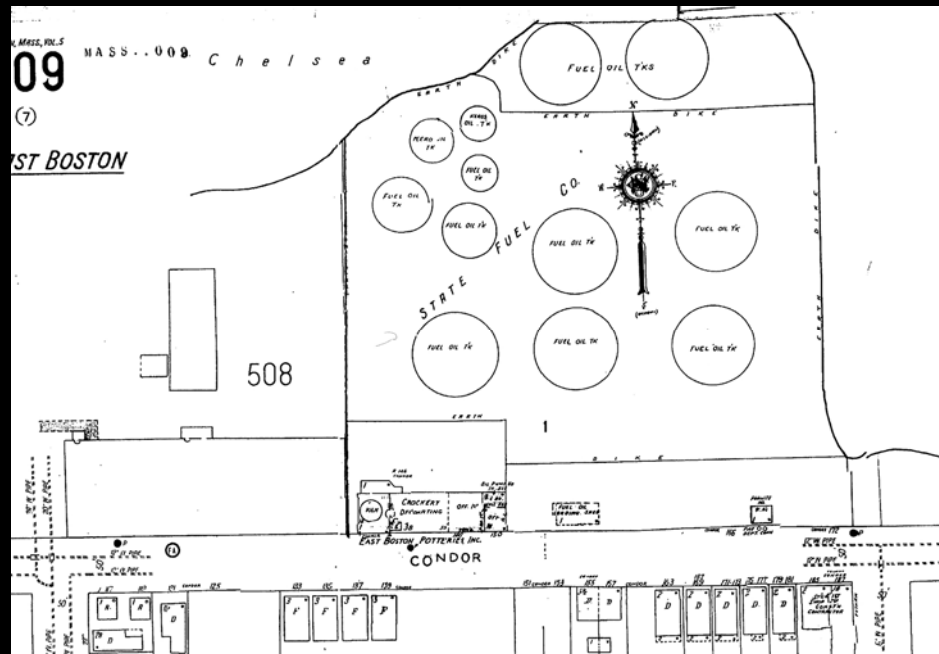


Chelsea Creek

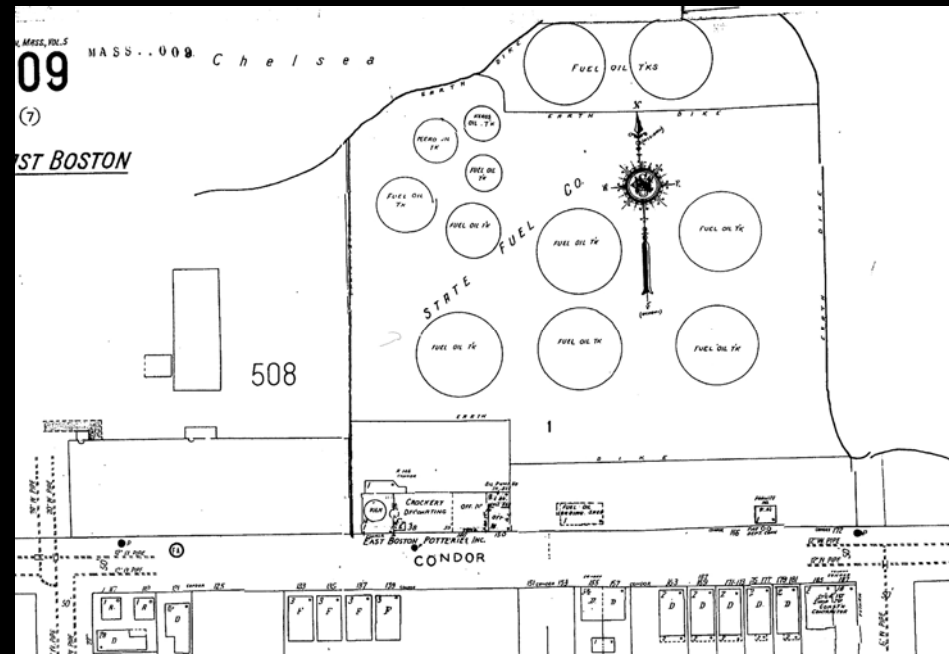


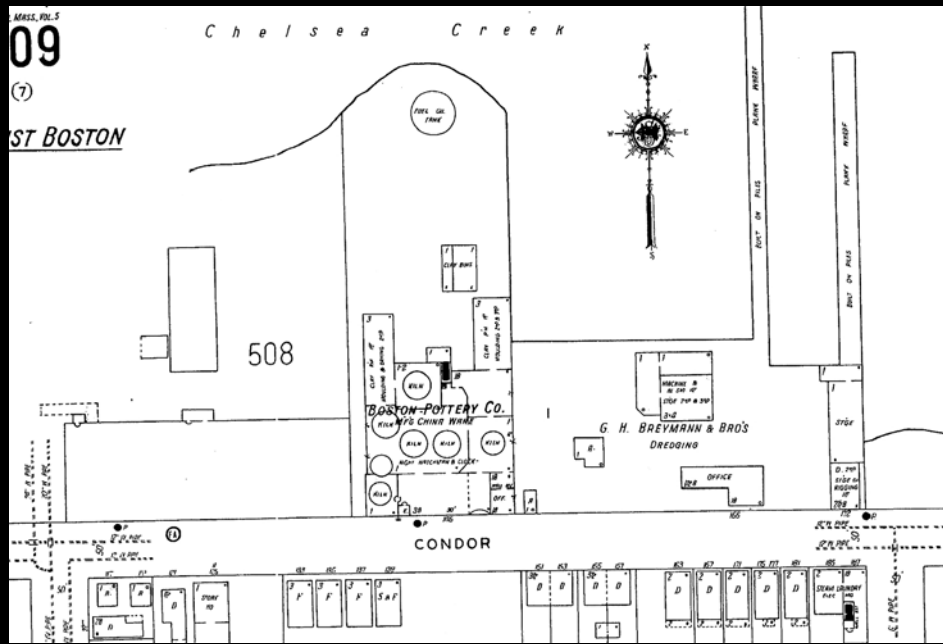
Chelsea

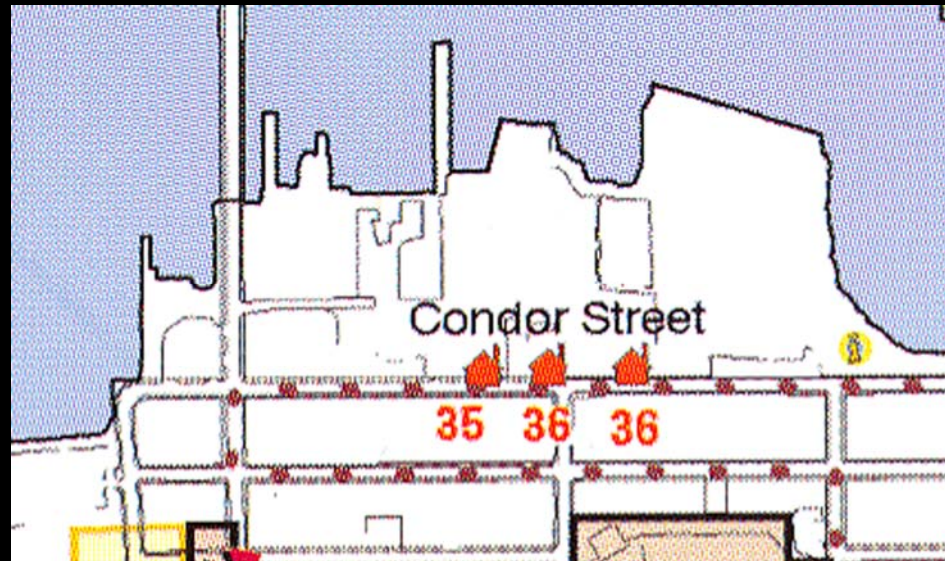






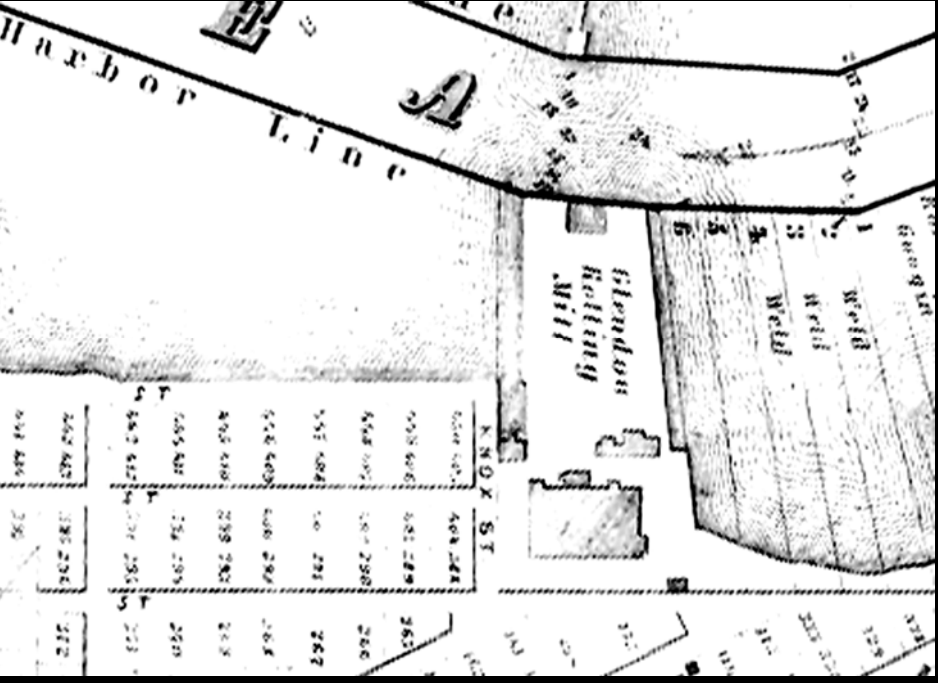


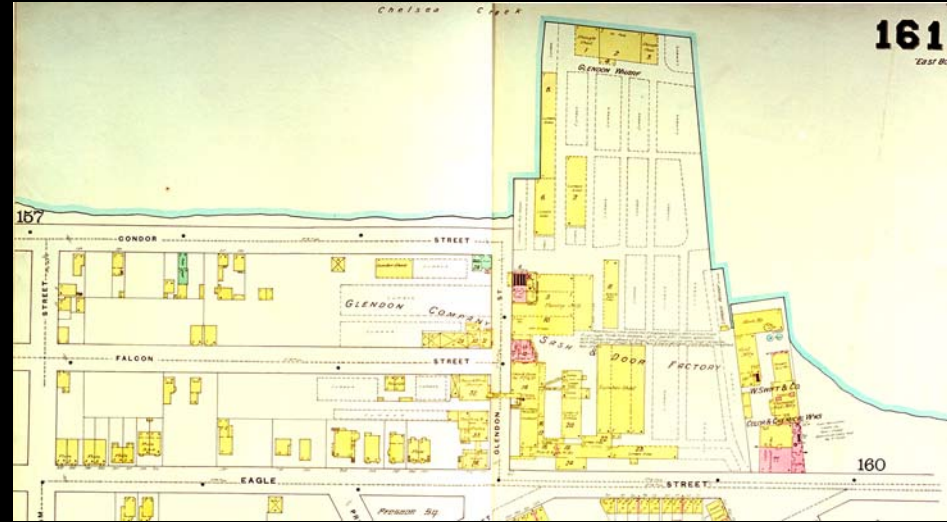
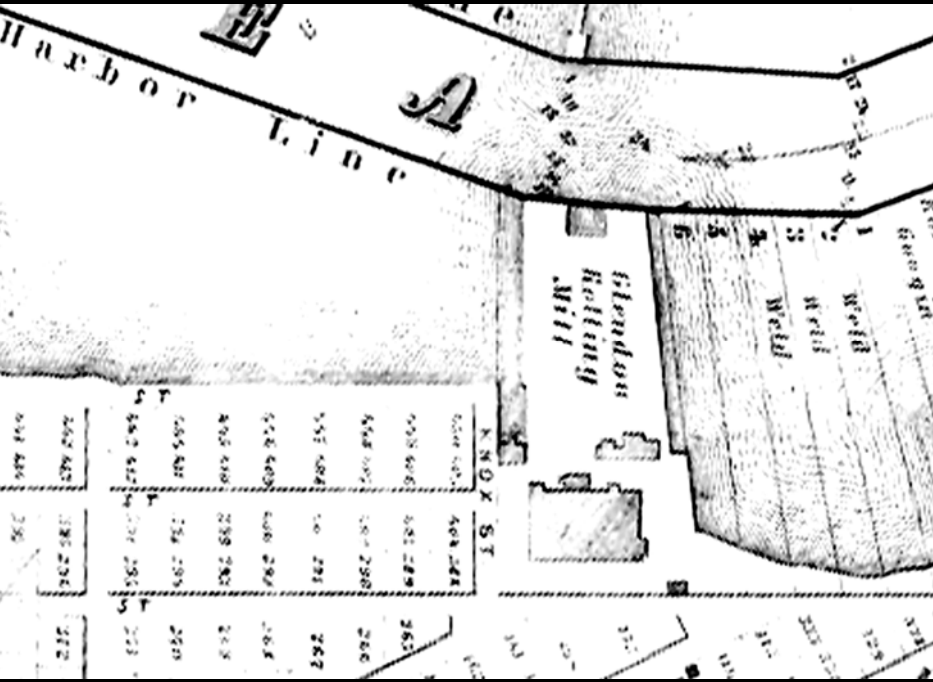










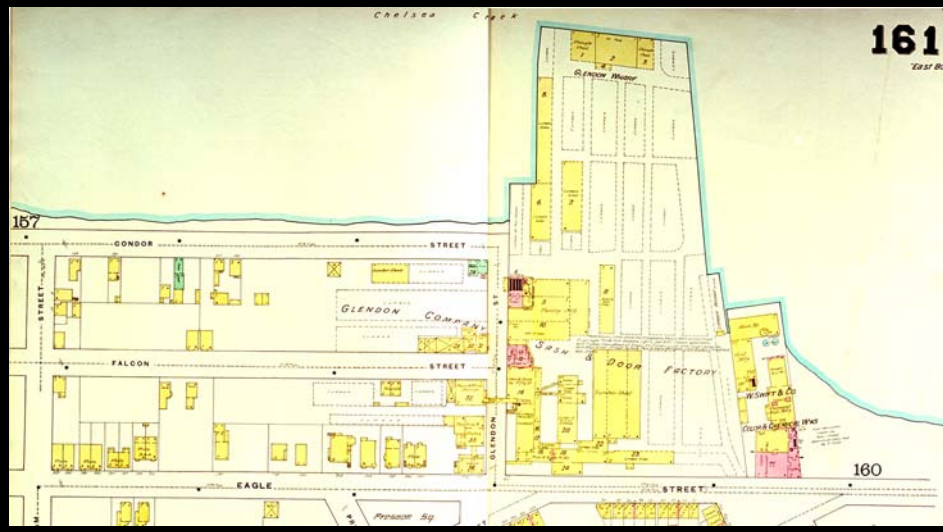
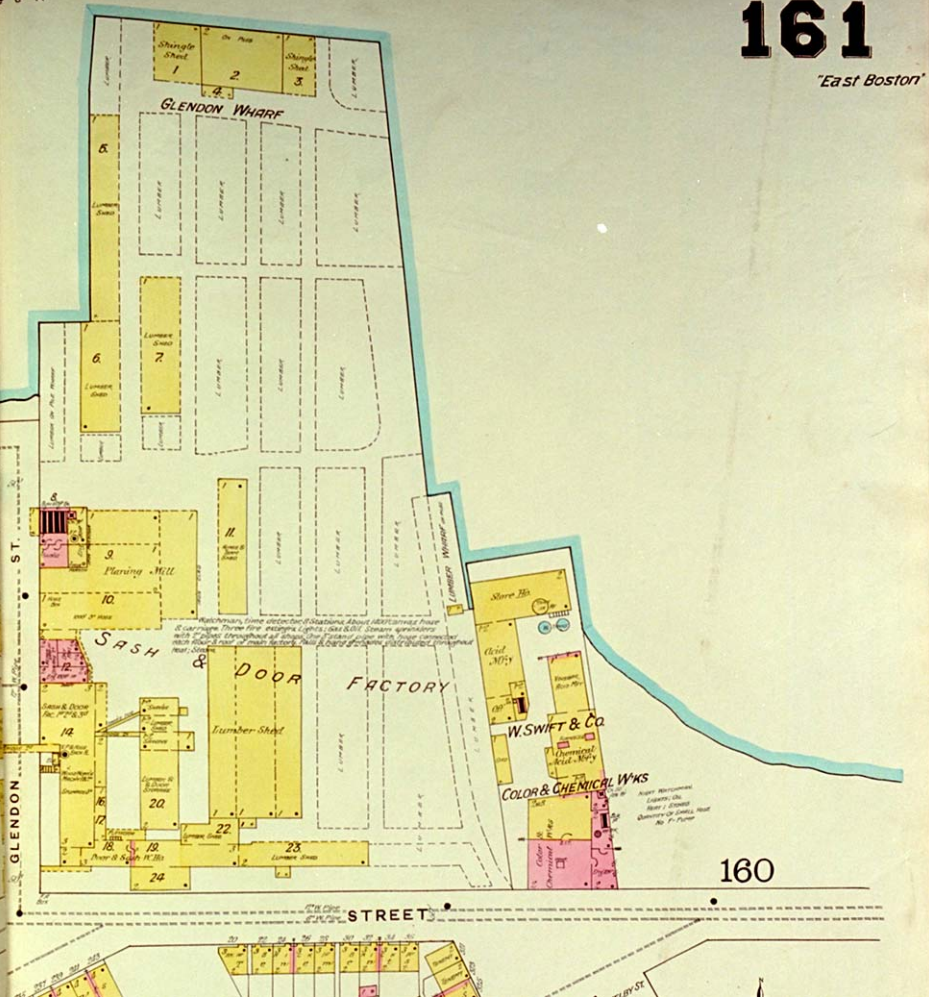




e k

# 161

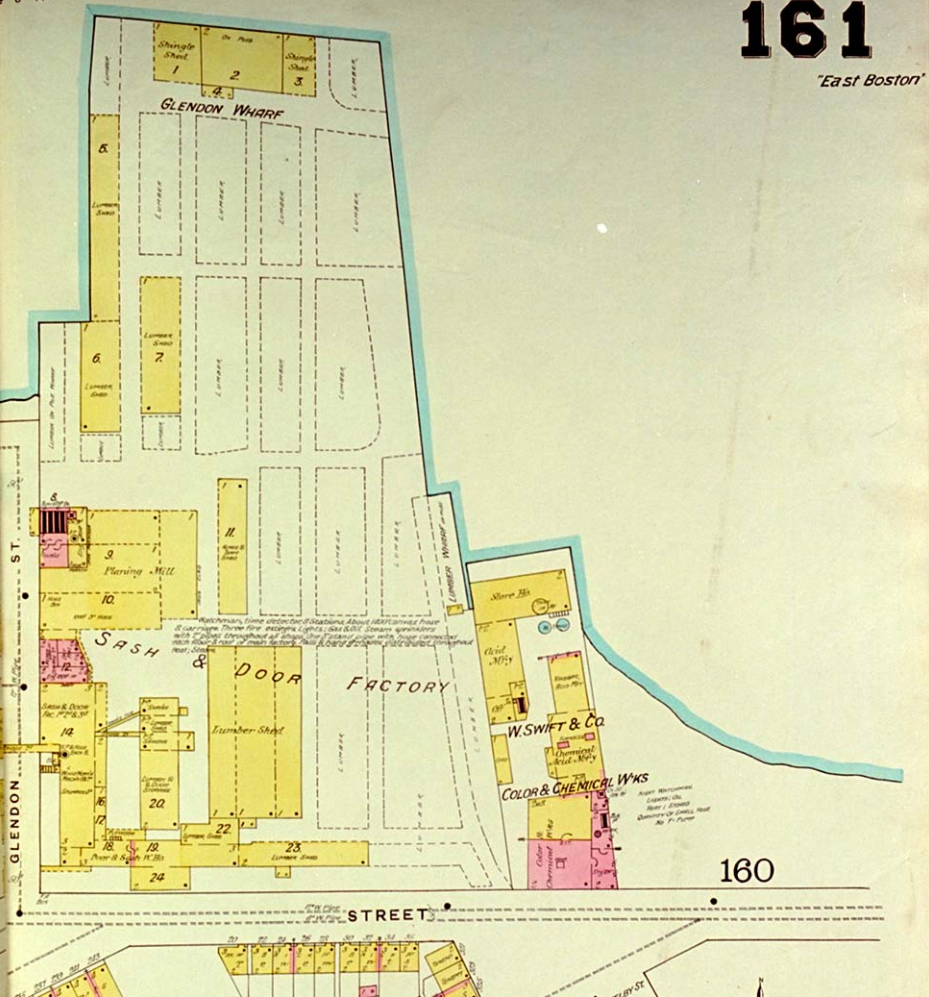
"East Boston"



e k

# 161

"East Boston"



160

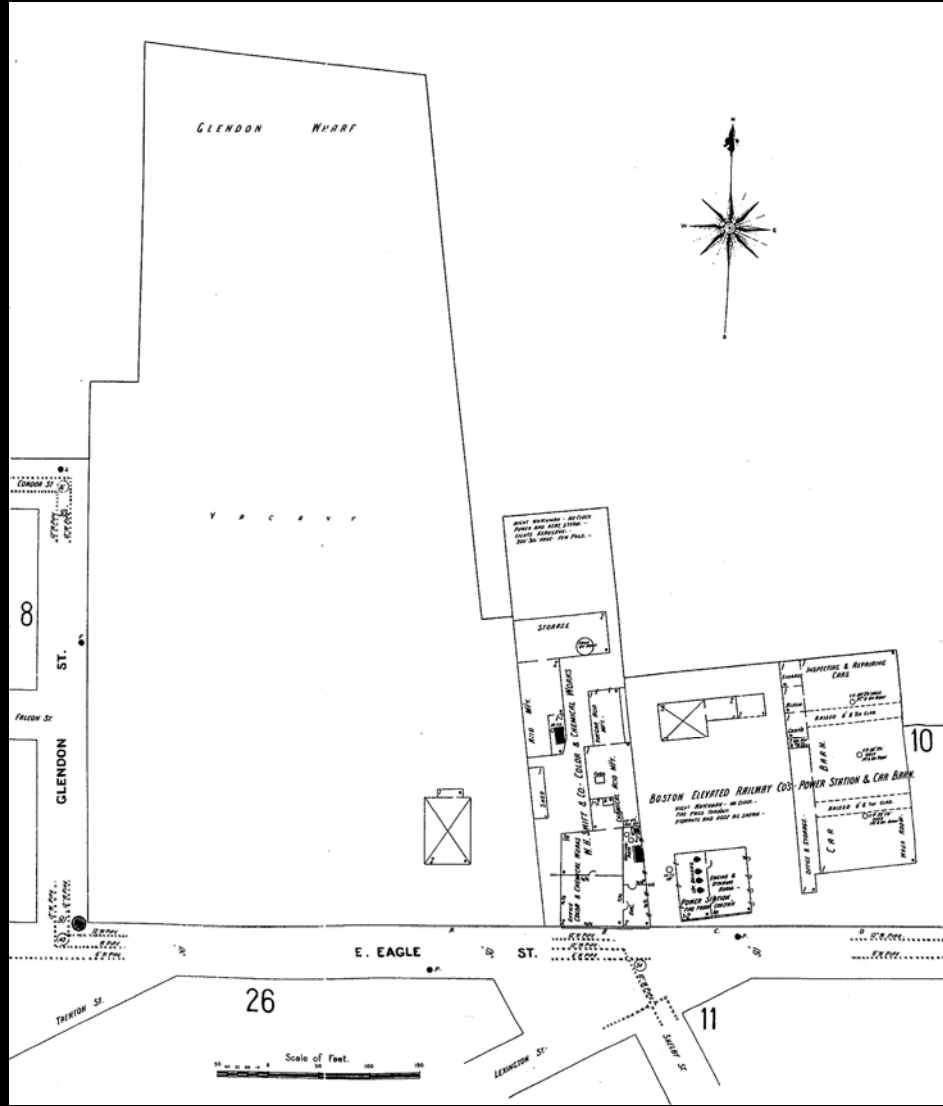
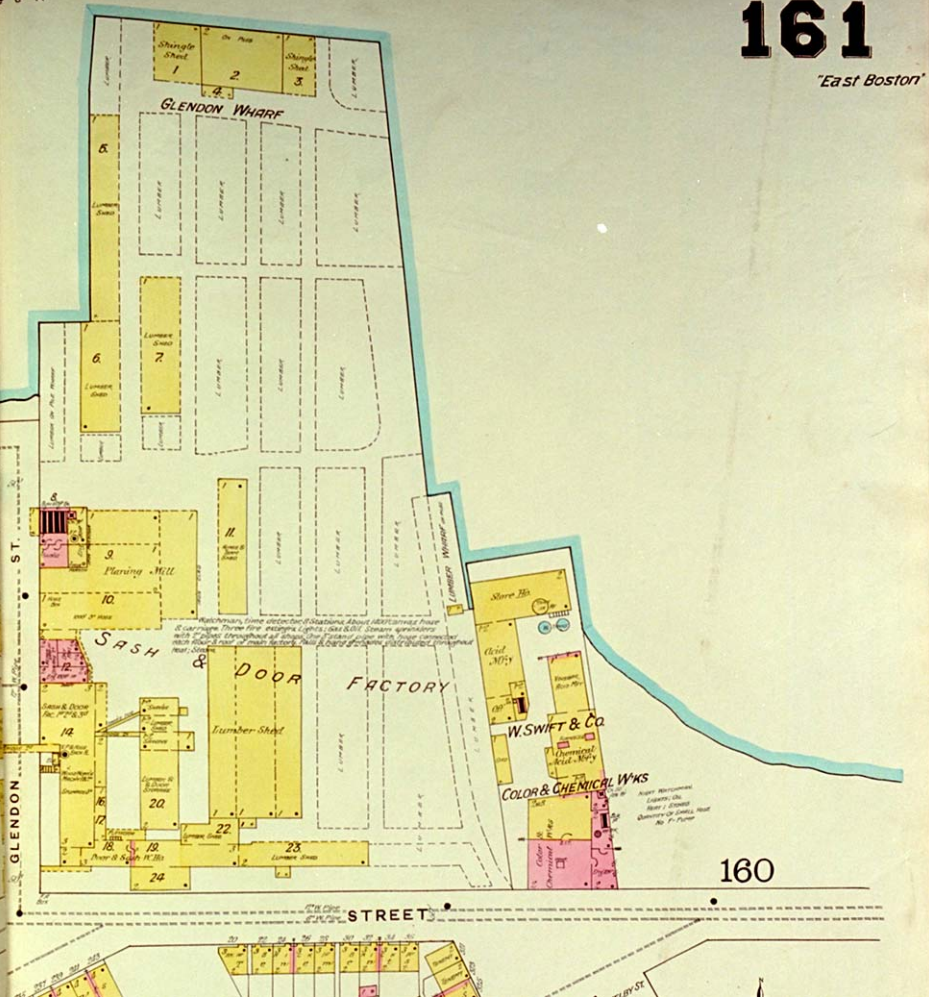




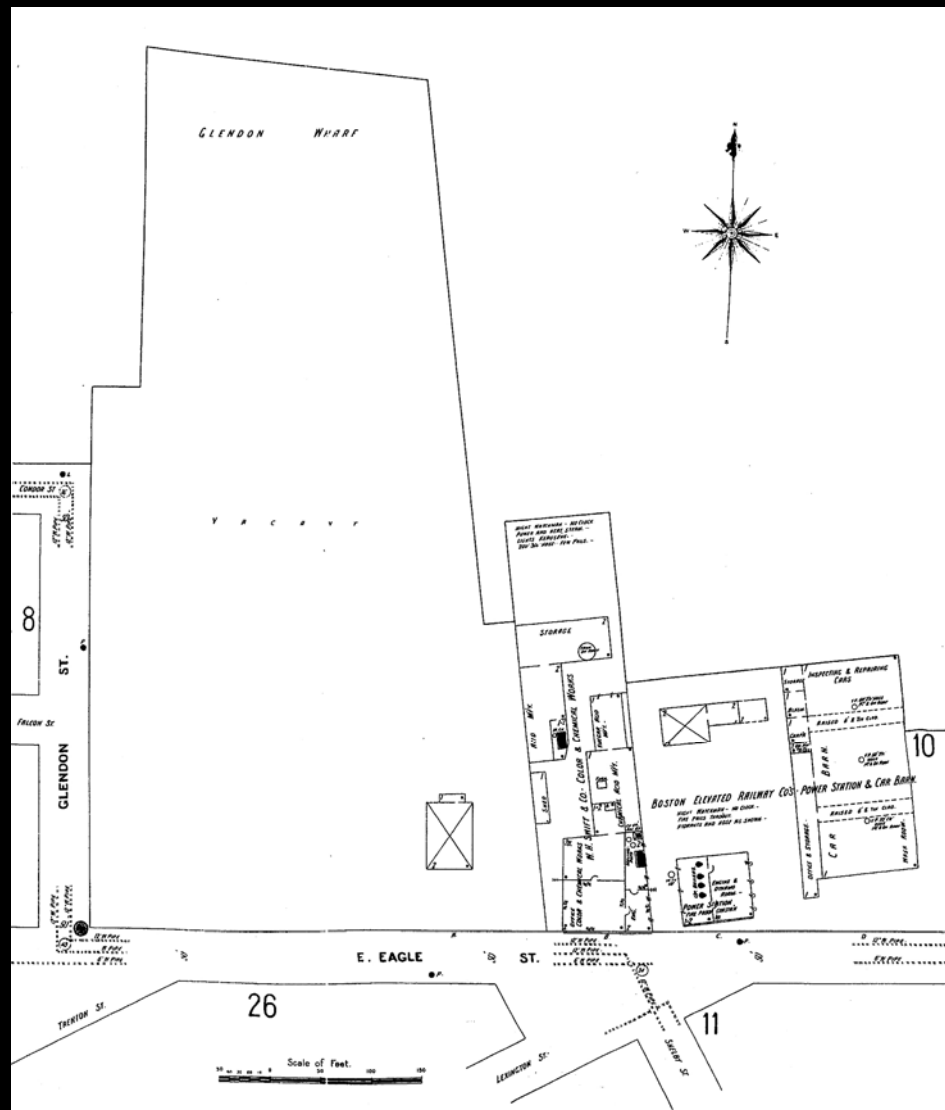
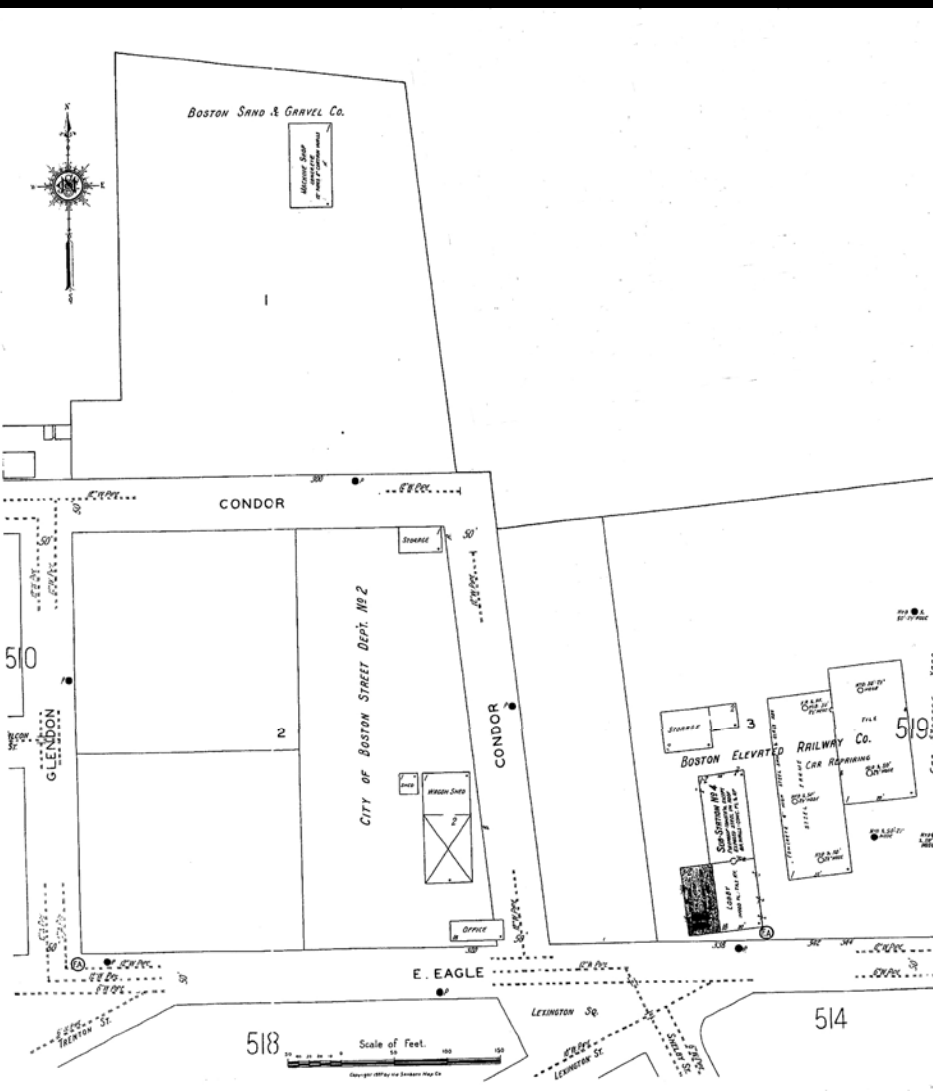
e c k

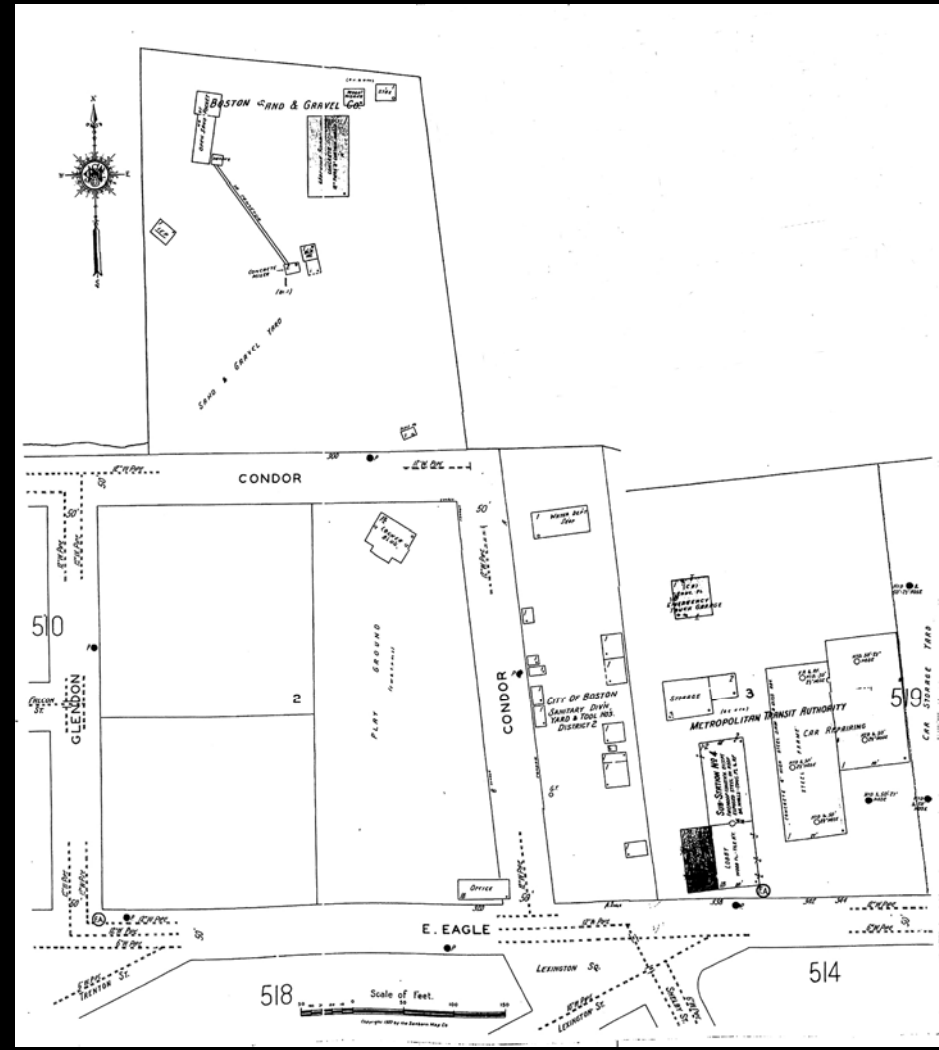
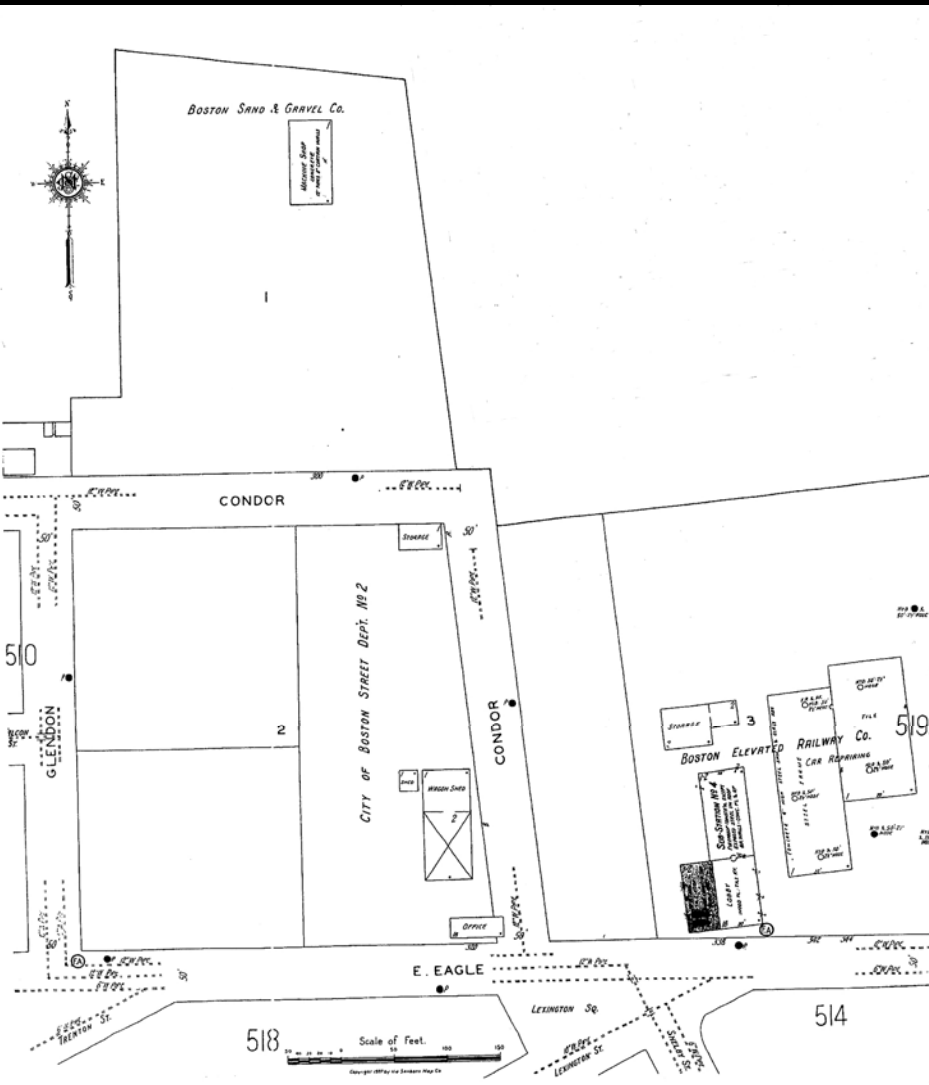
# 161

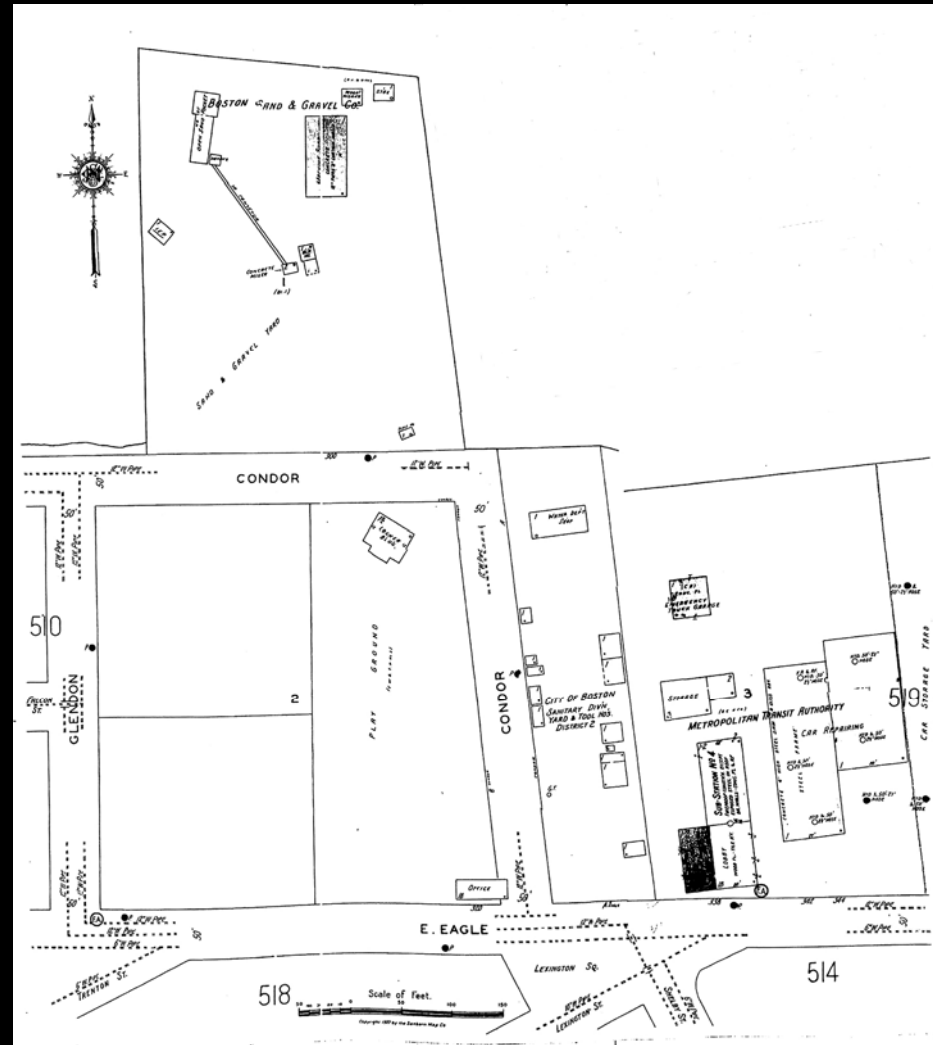
"East Boston"











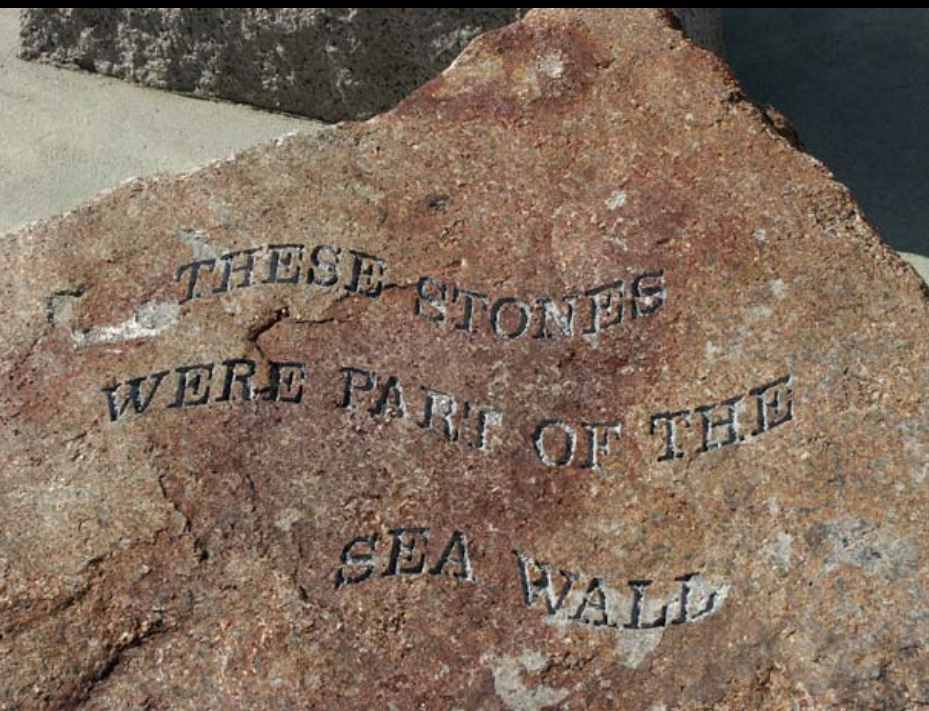


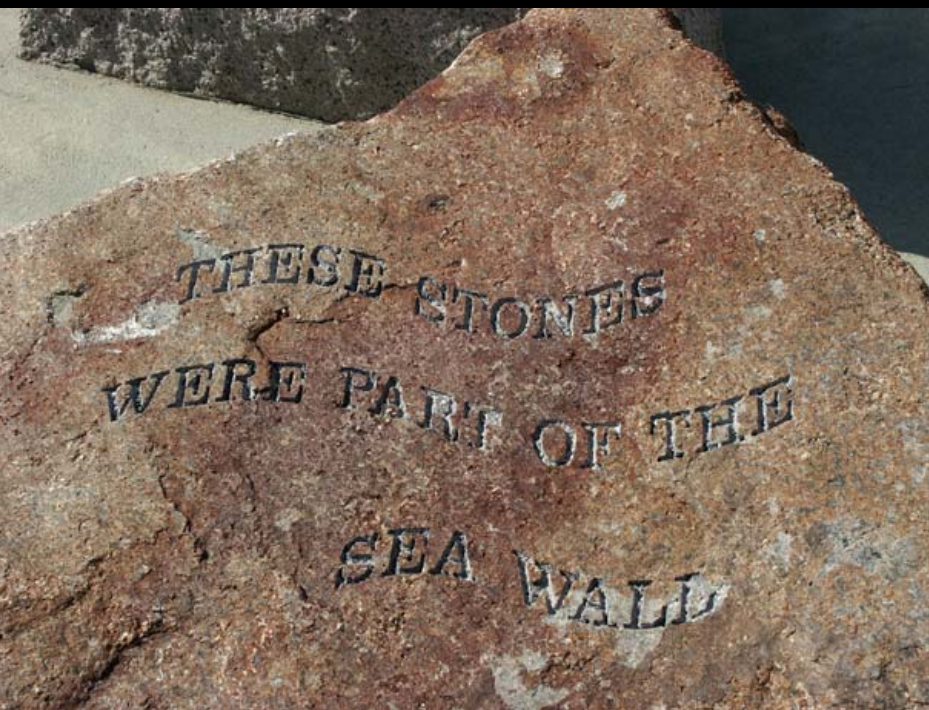








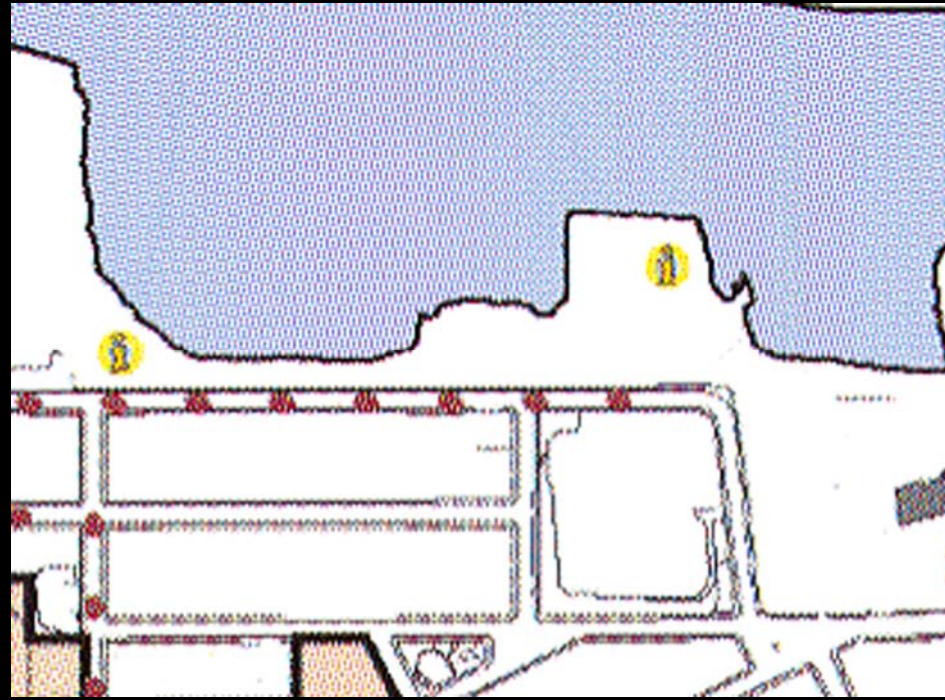






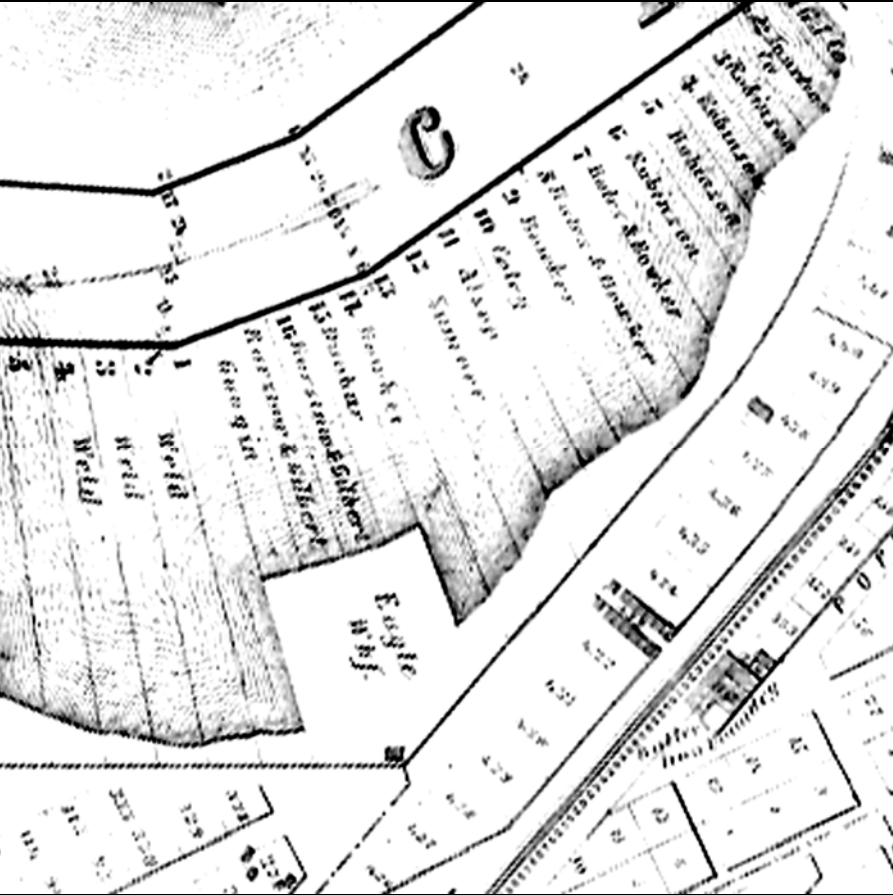




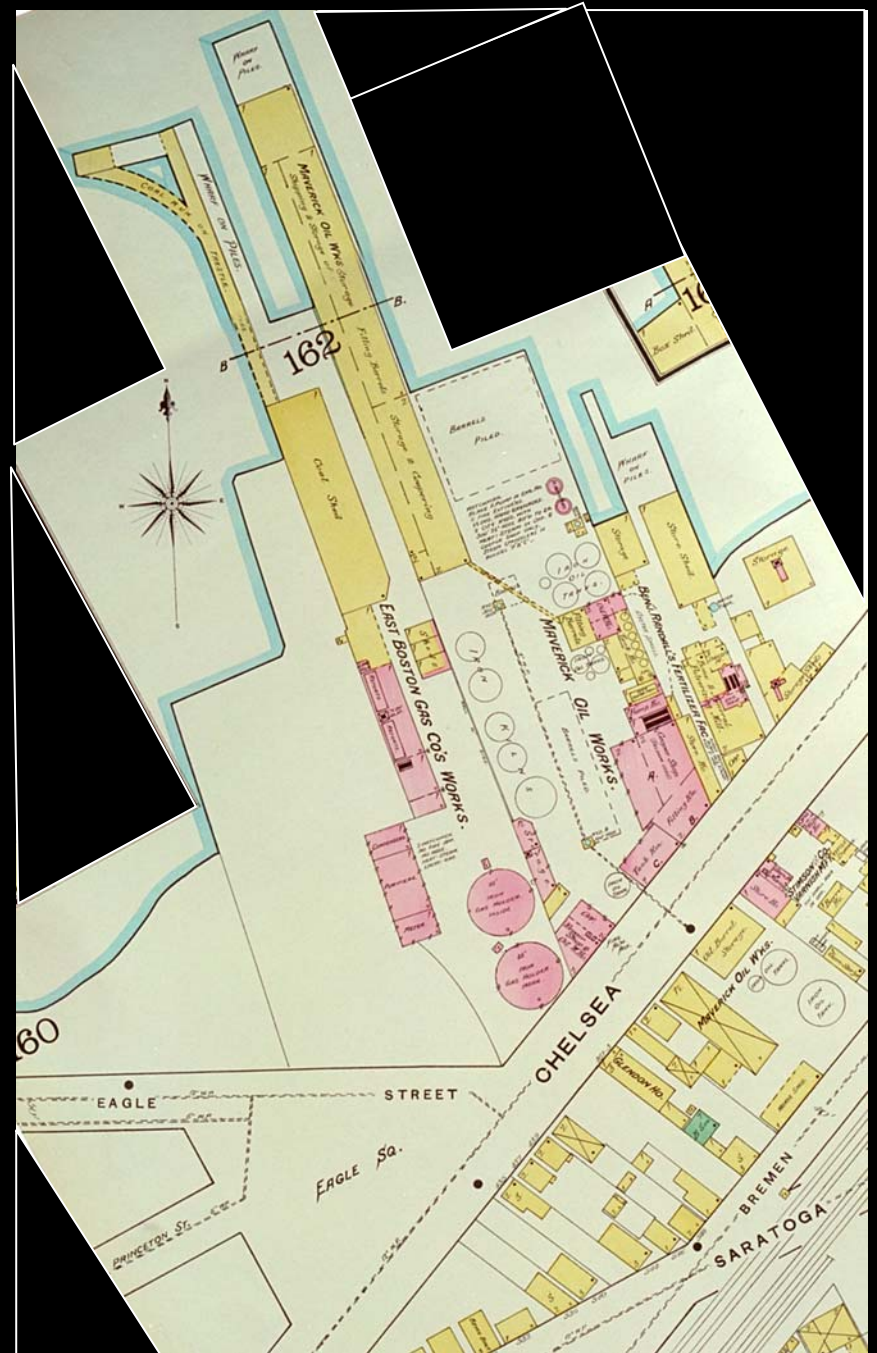
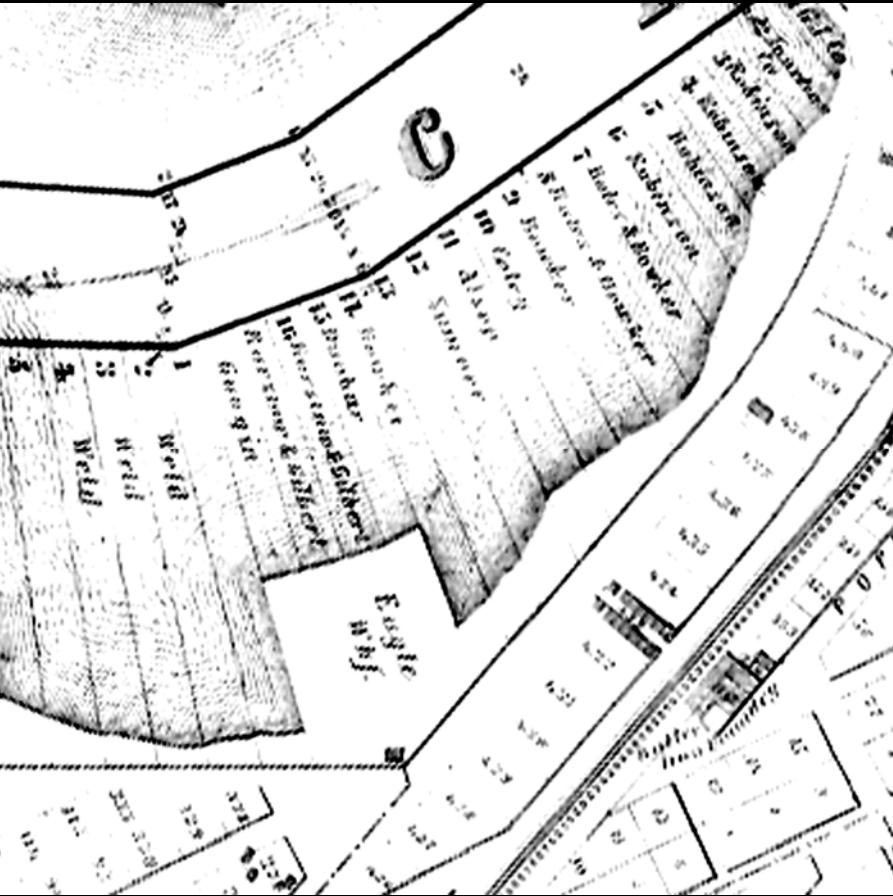


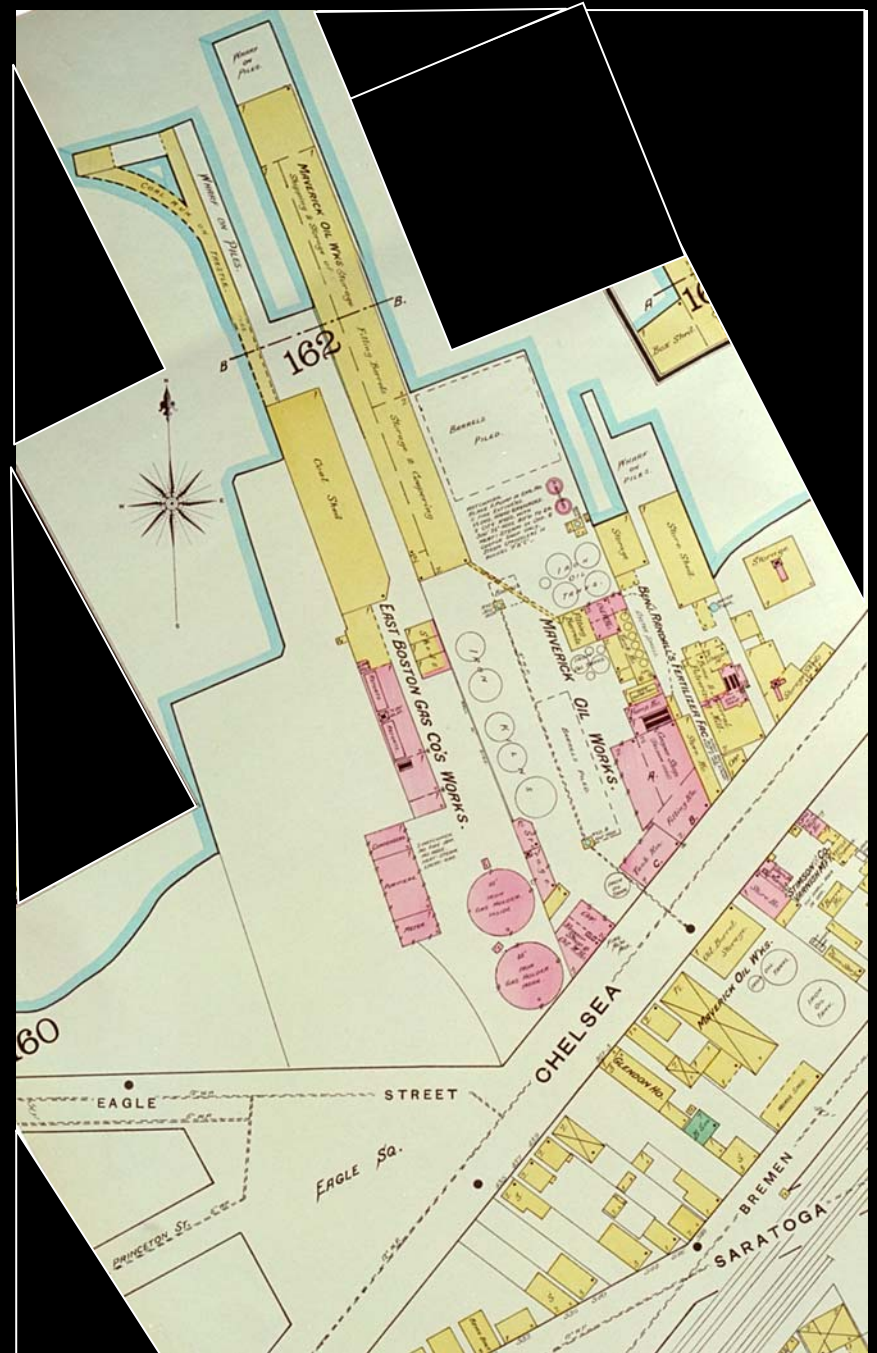
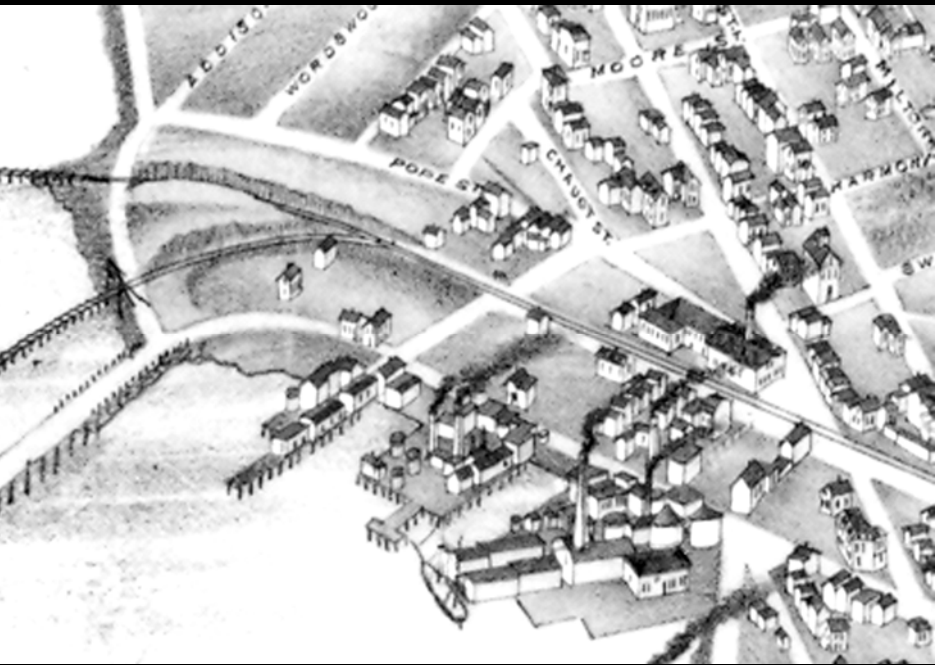




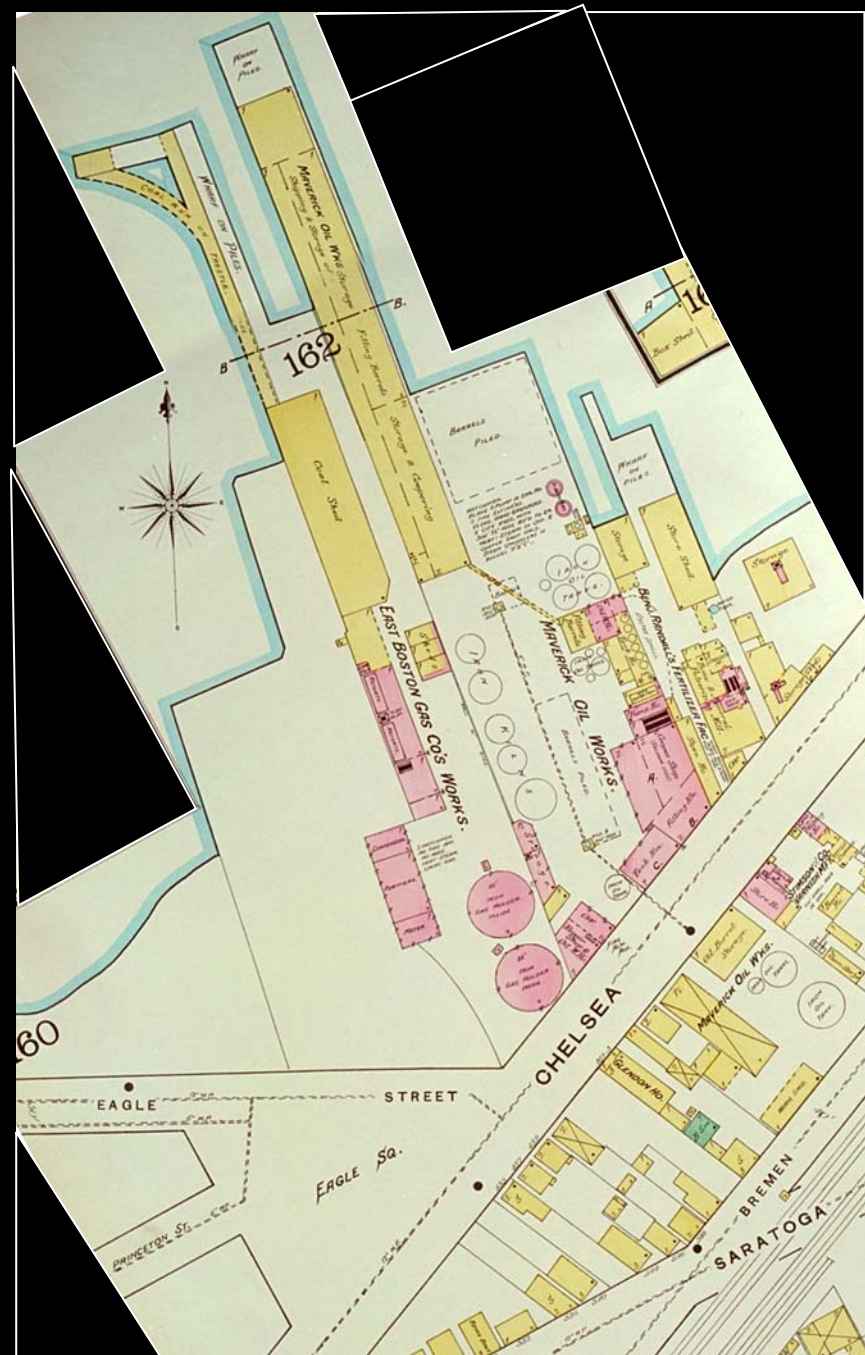
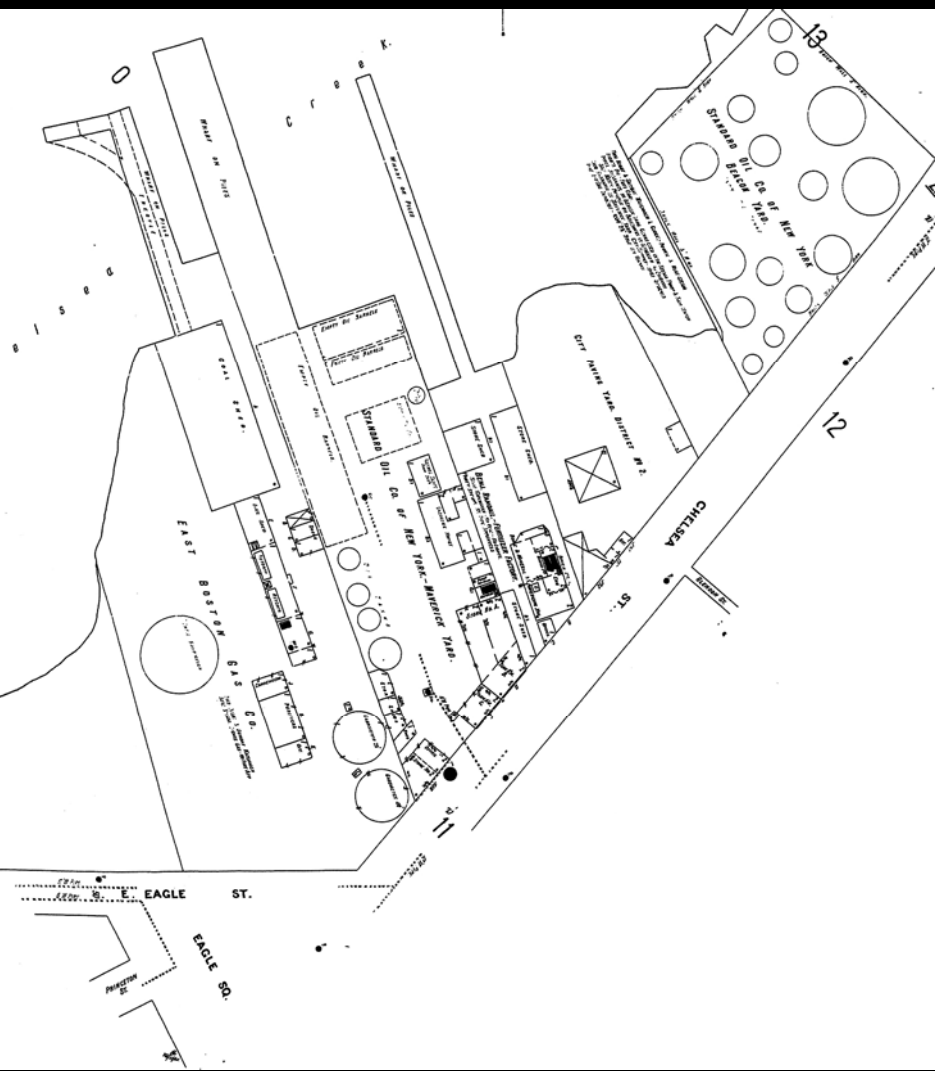




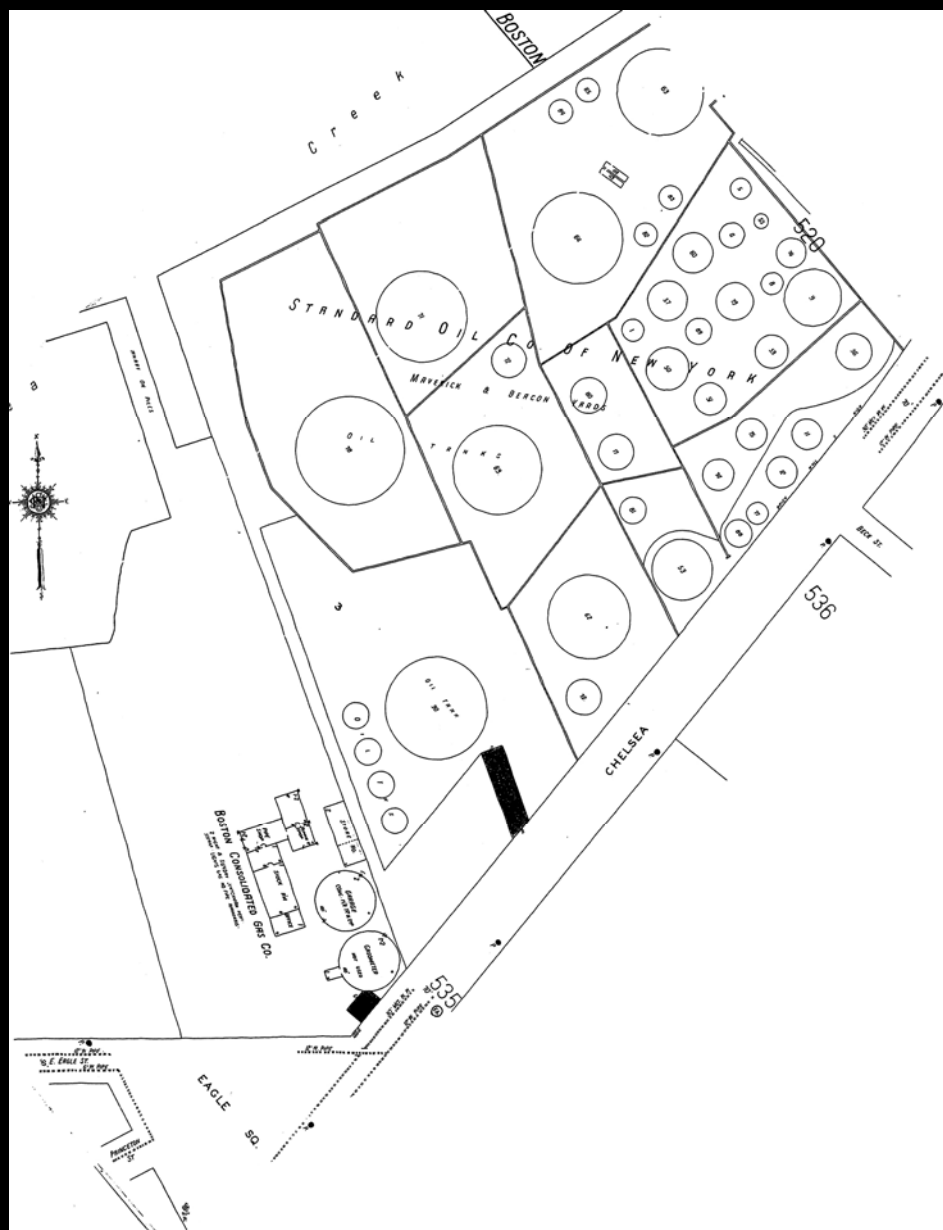
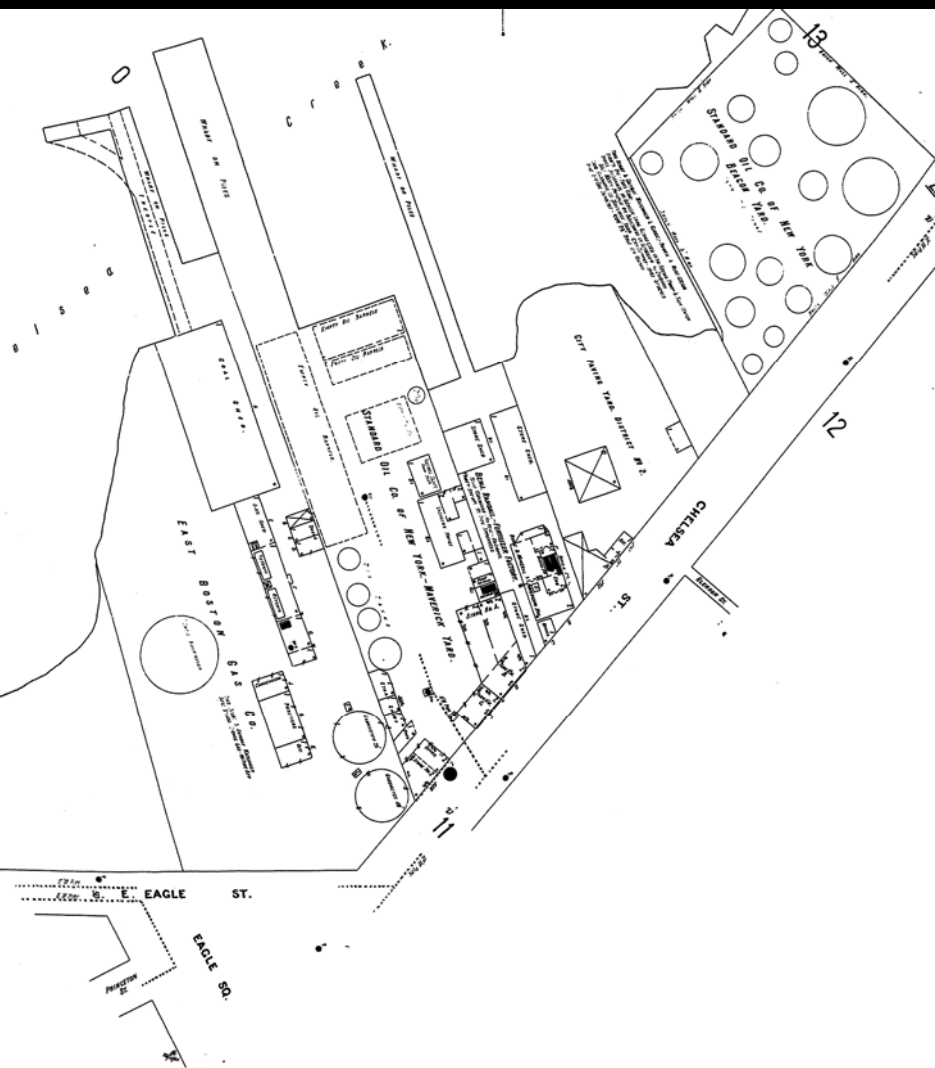


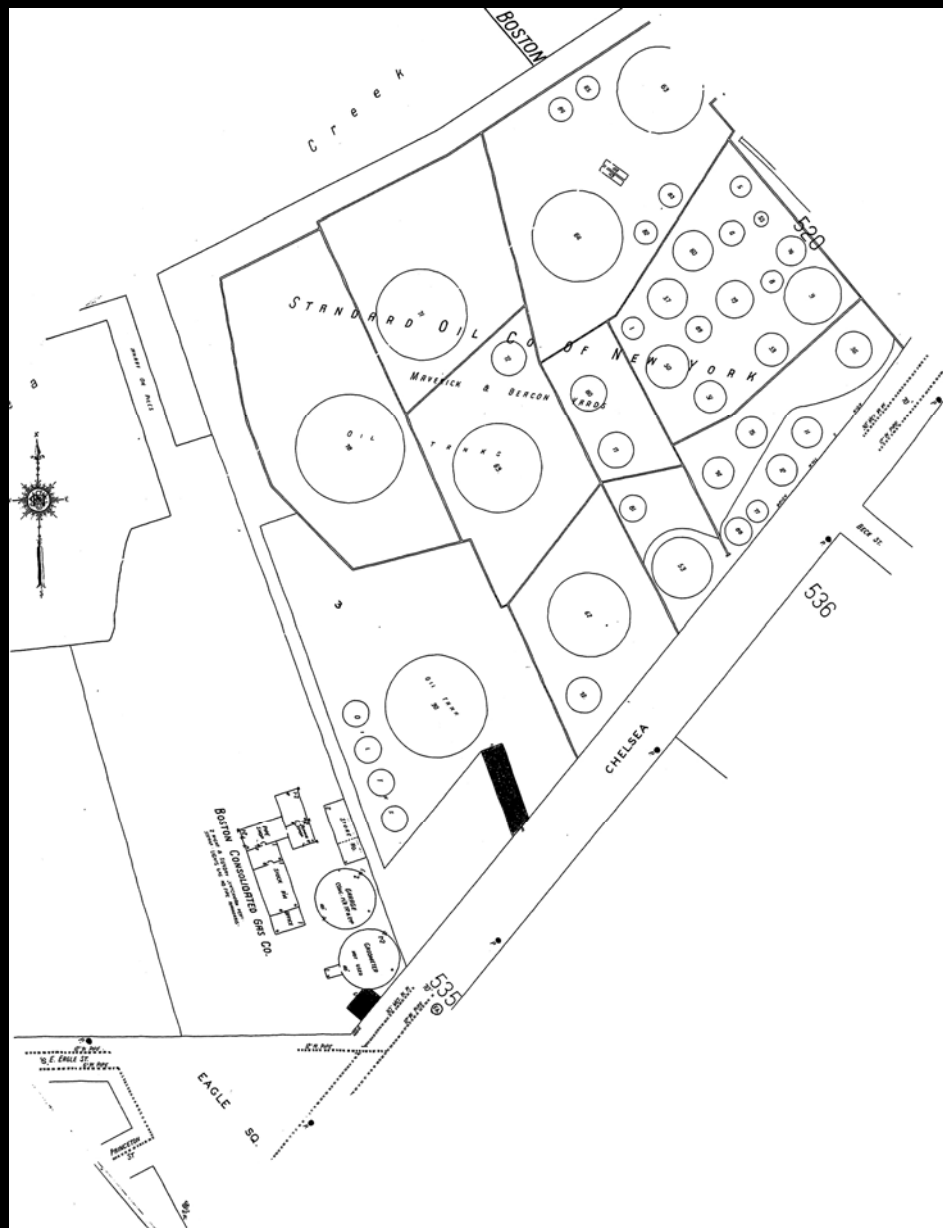
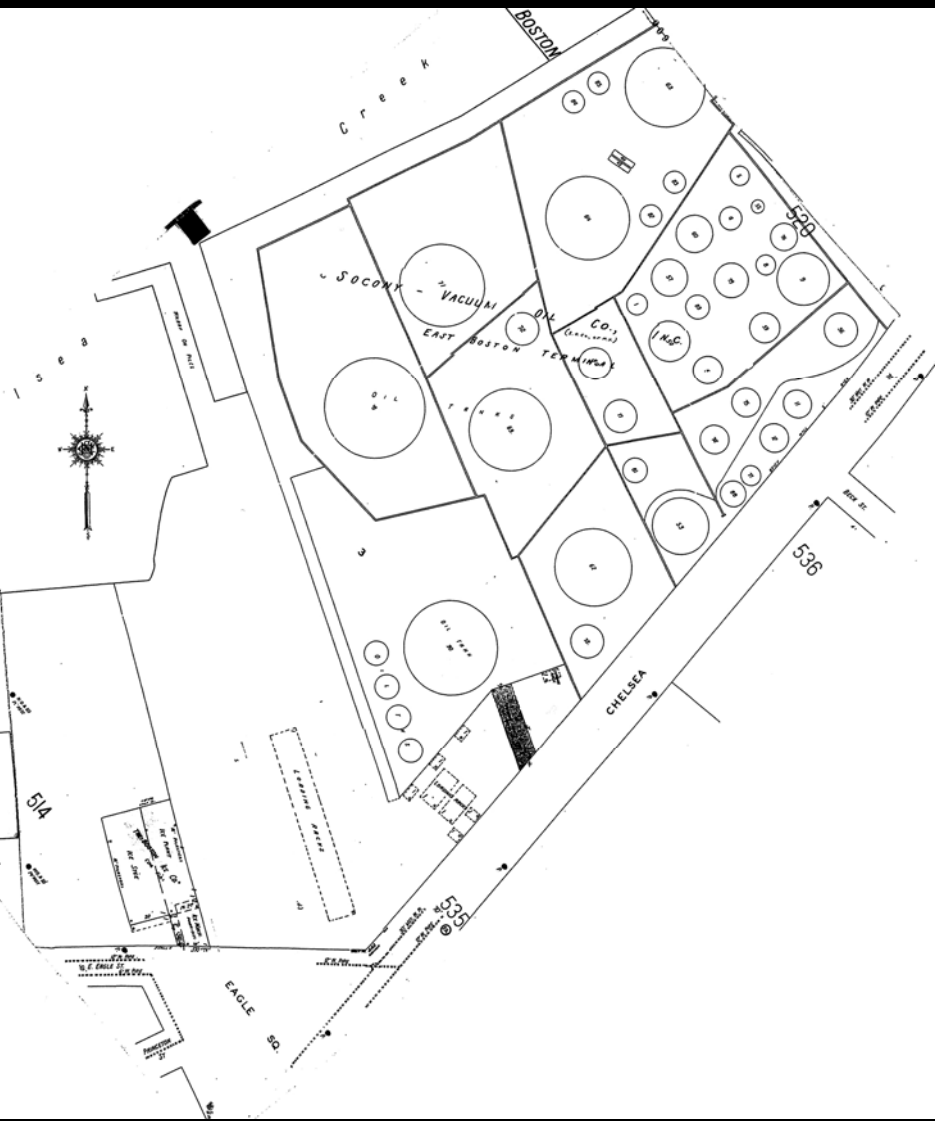


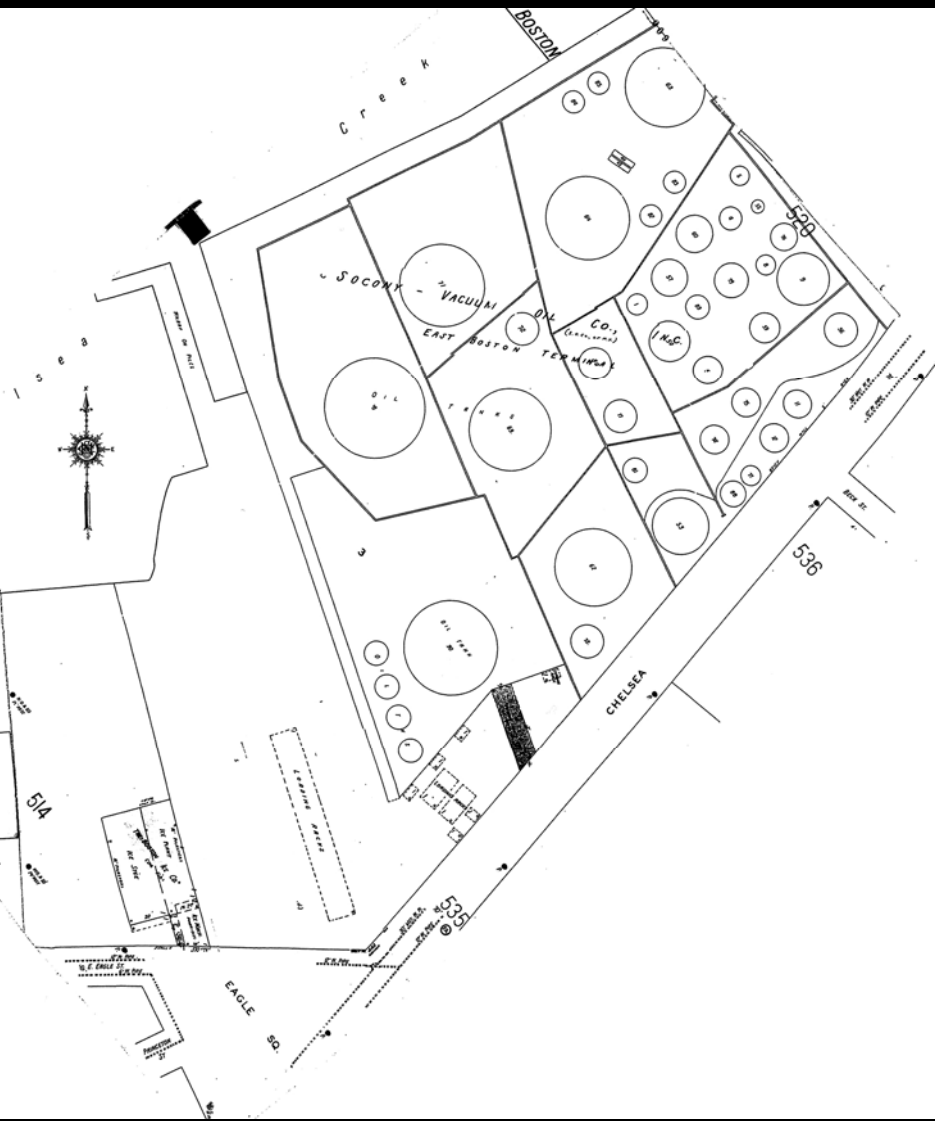








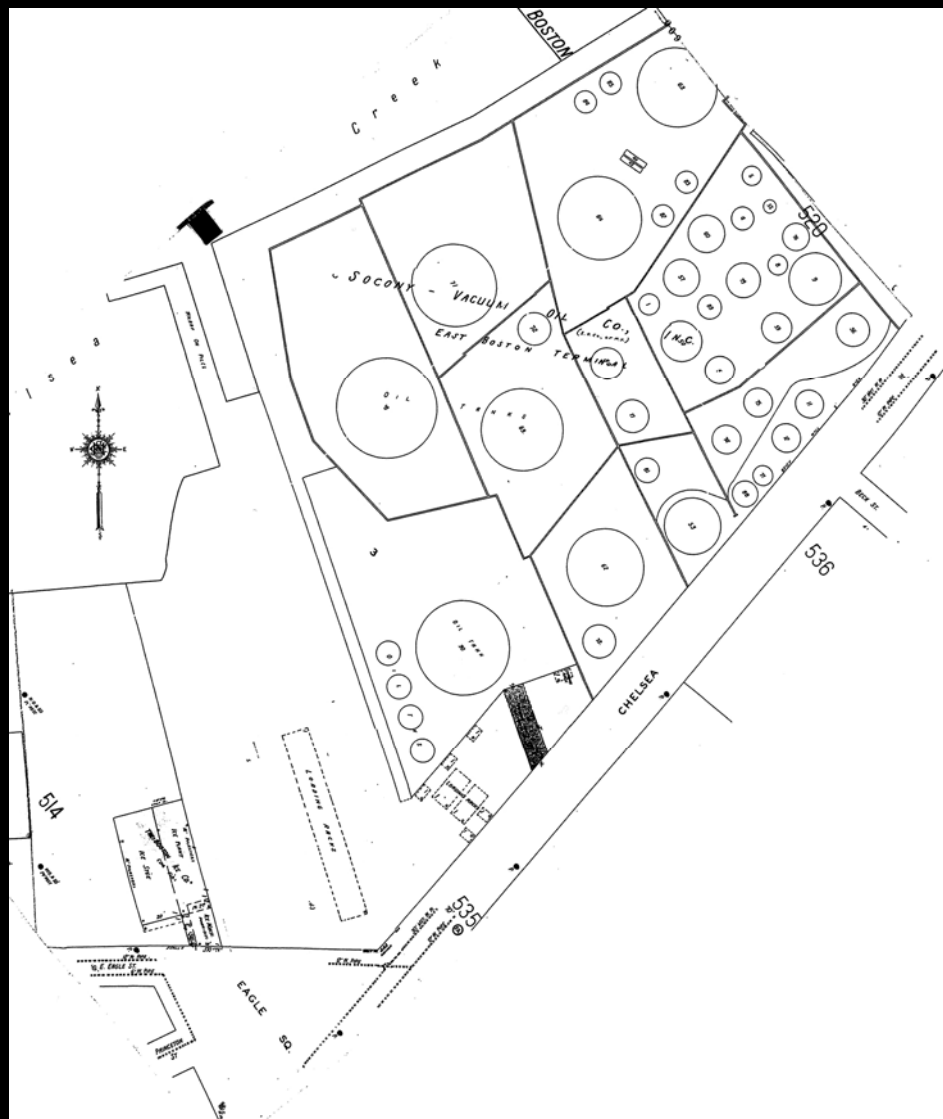




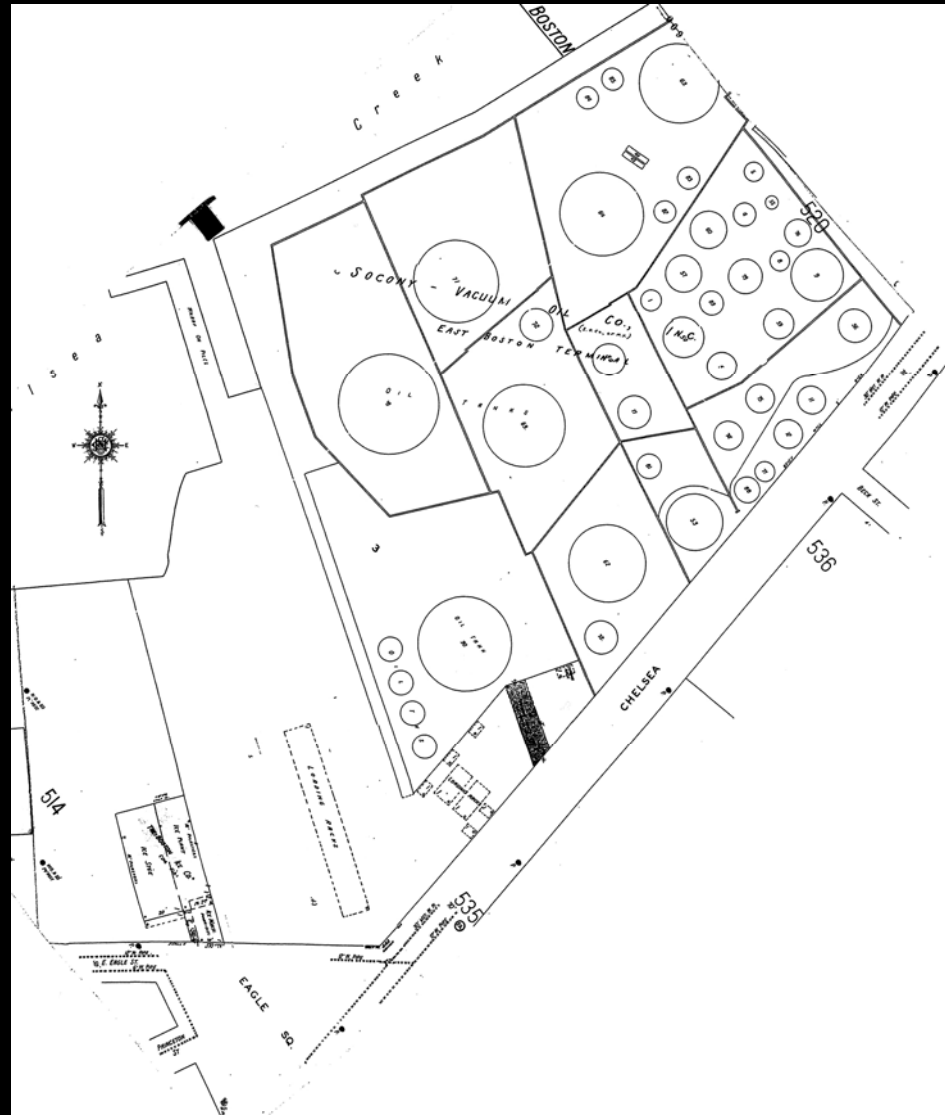




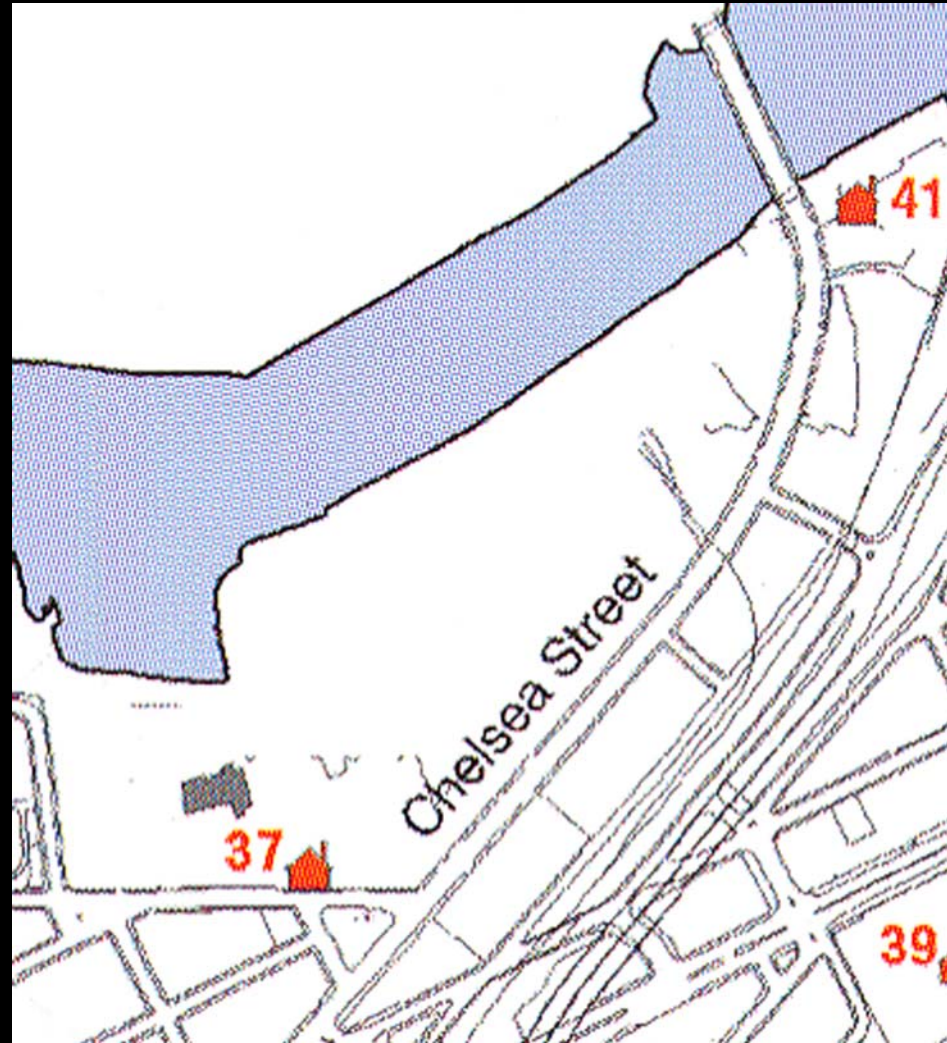


















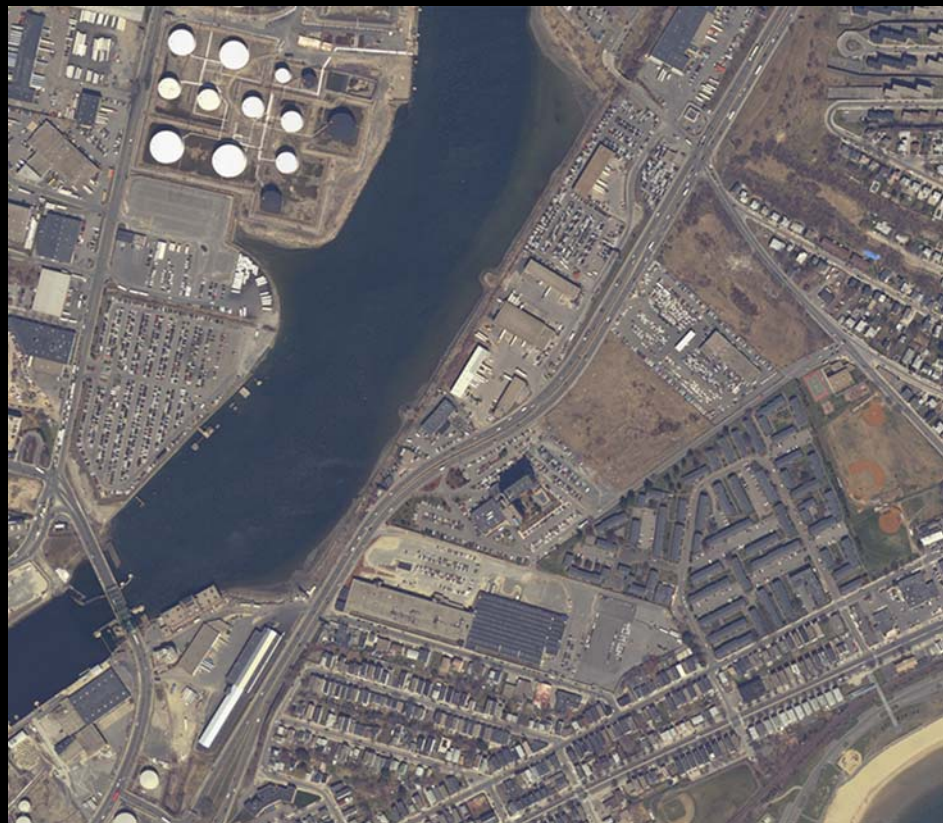




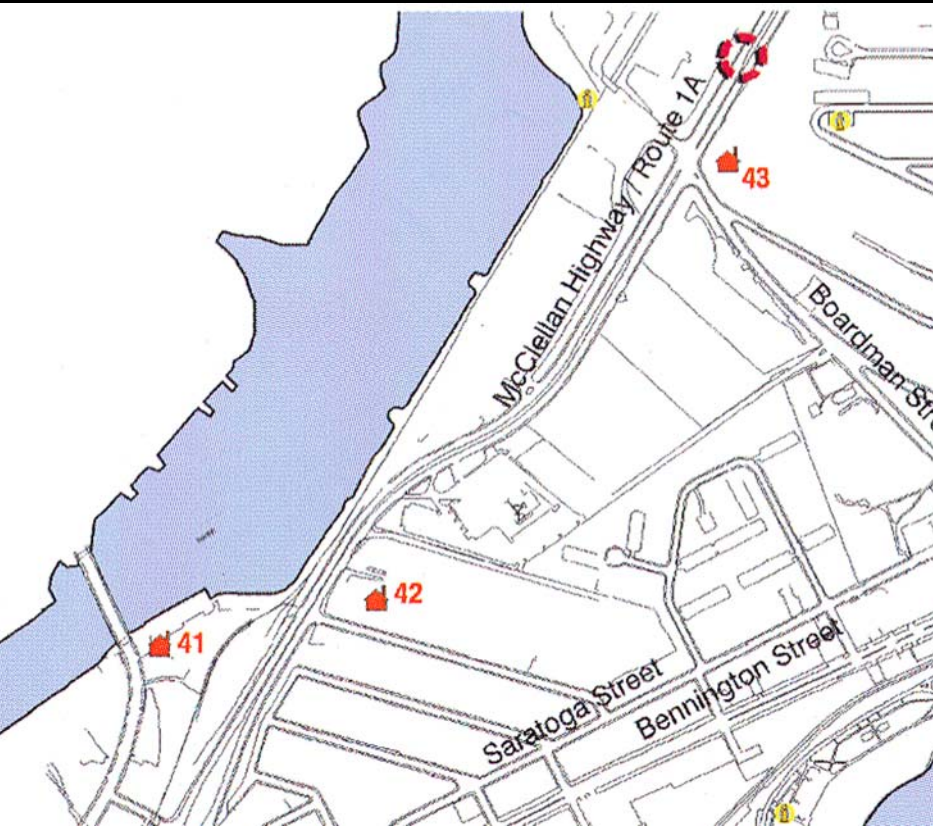




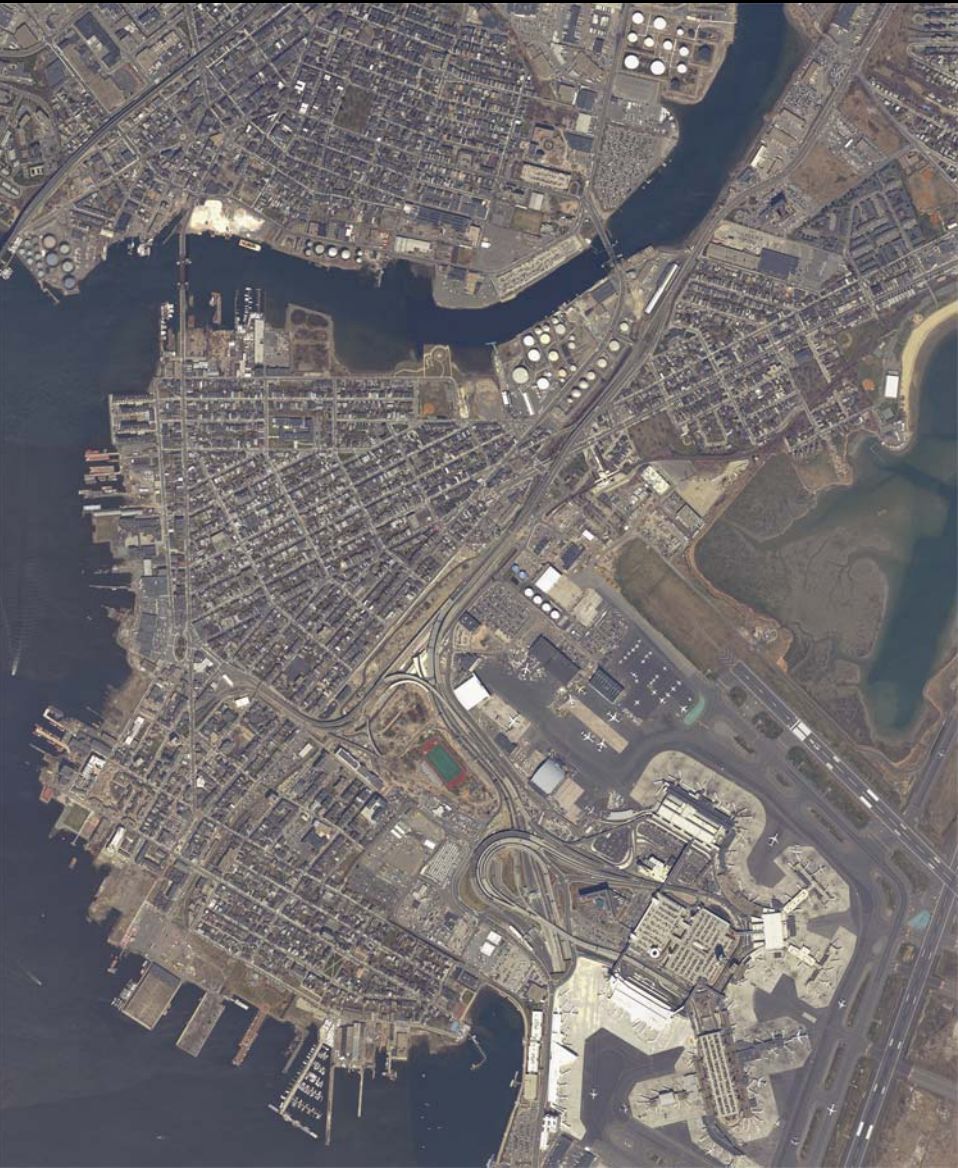




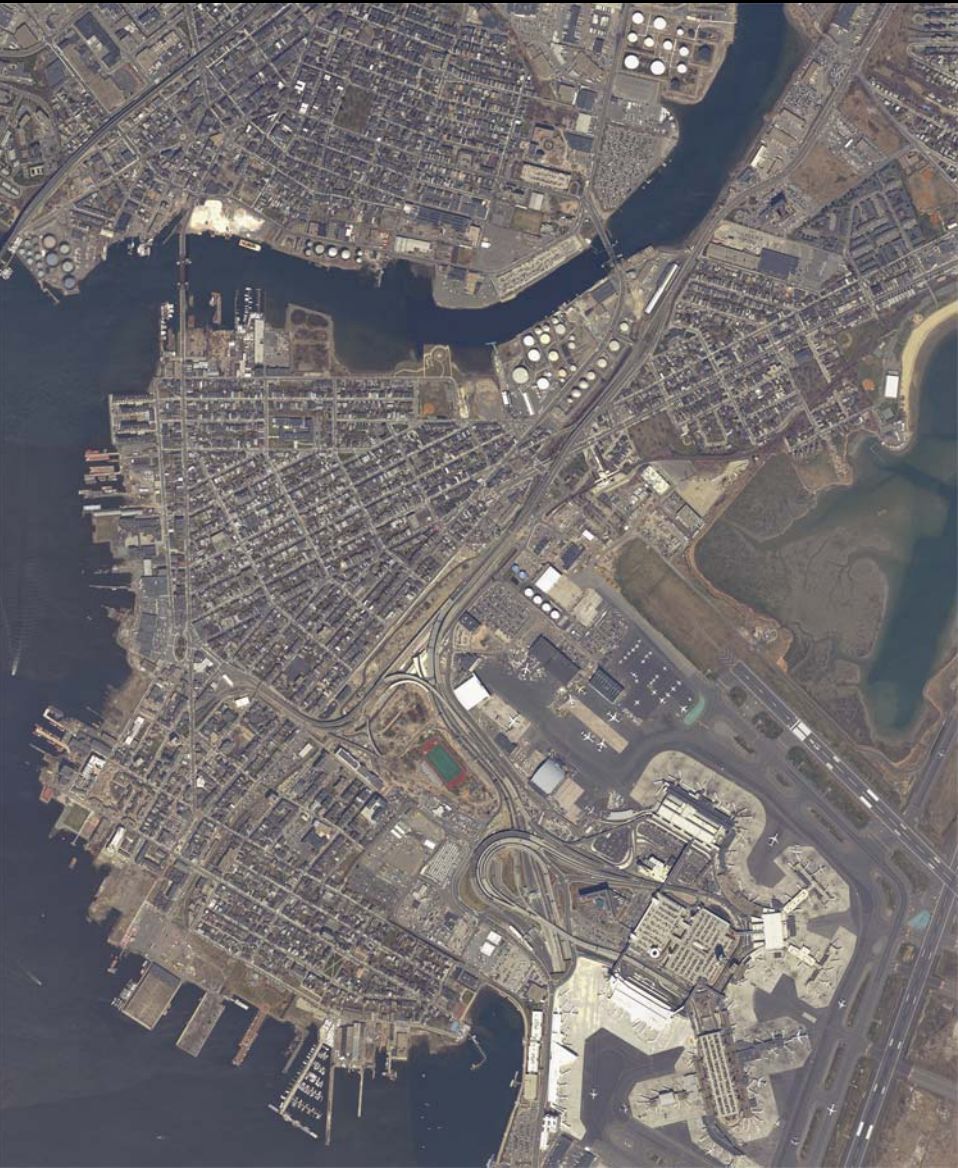




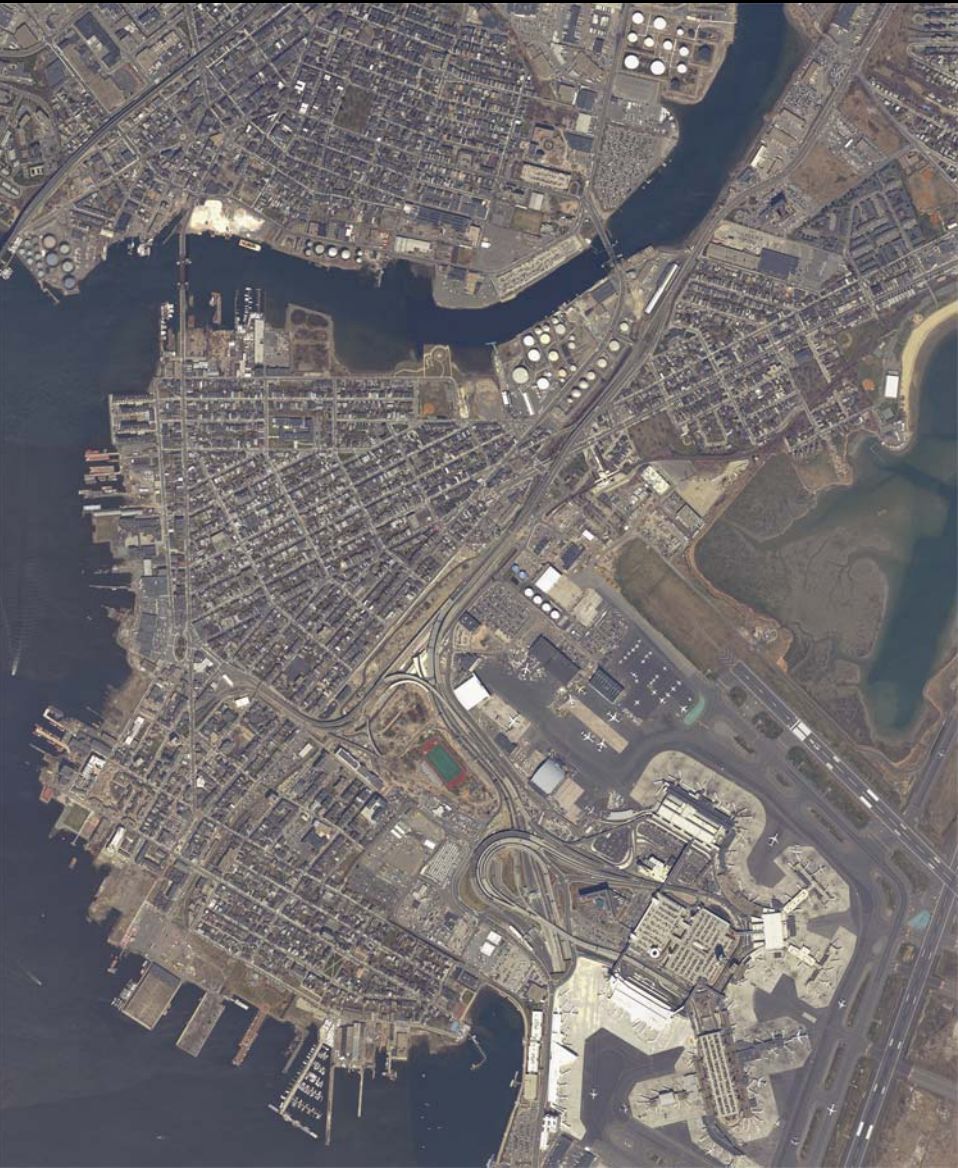




















# Chelsea Creek Waterfront – Historical Sites (west to east)

## I. East Boston History

Overall development of the Condor/Eagle St. waterfront  
Battles of Noddles Island and Chelsea Creek

## II. Shipping – none

## III. Shipbuilding and related industries

shipyards just east of Meridian St. Bridge  
mast and spar yard east of Brooks St.

## IV. Other industries

Bay State Dredging Co.  
Boston Electric Light Co.  
Condor Iron Foundry Co./ Gibby Iron Foundry Co.  
Boston & Lockport Block Co.  
New England Pottery Co./ Boston Pottery Co./ East Boston Potteries, Inc.  
State Fuel Co./ Hess Oil  
steam laundry  
Eastern Dredging Co./ G. H. Breymann Bros. Dredging  
sash and door factory on Glendon Wharf  
Boston Sand & Gravel (Condor St. Urban Wild)  
W. H. Swift & Co. Color & Chemical Works  
Boston Ice Co.

## V. Railroads

Boston Elevated Railway/ MTA power station & repair shop

## VI. Ferries and tunnels – none

## VII. Immigration – none

## VIII. Sites not included in above categories

North Metropolitan Sewage Pumping Station