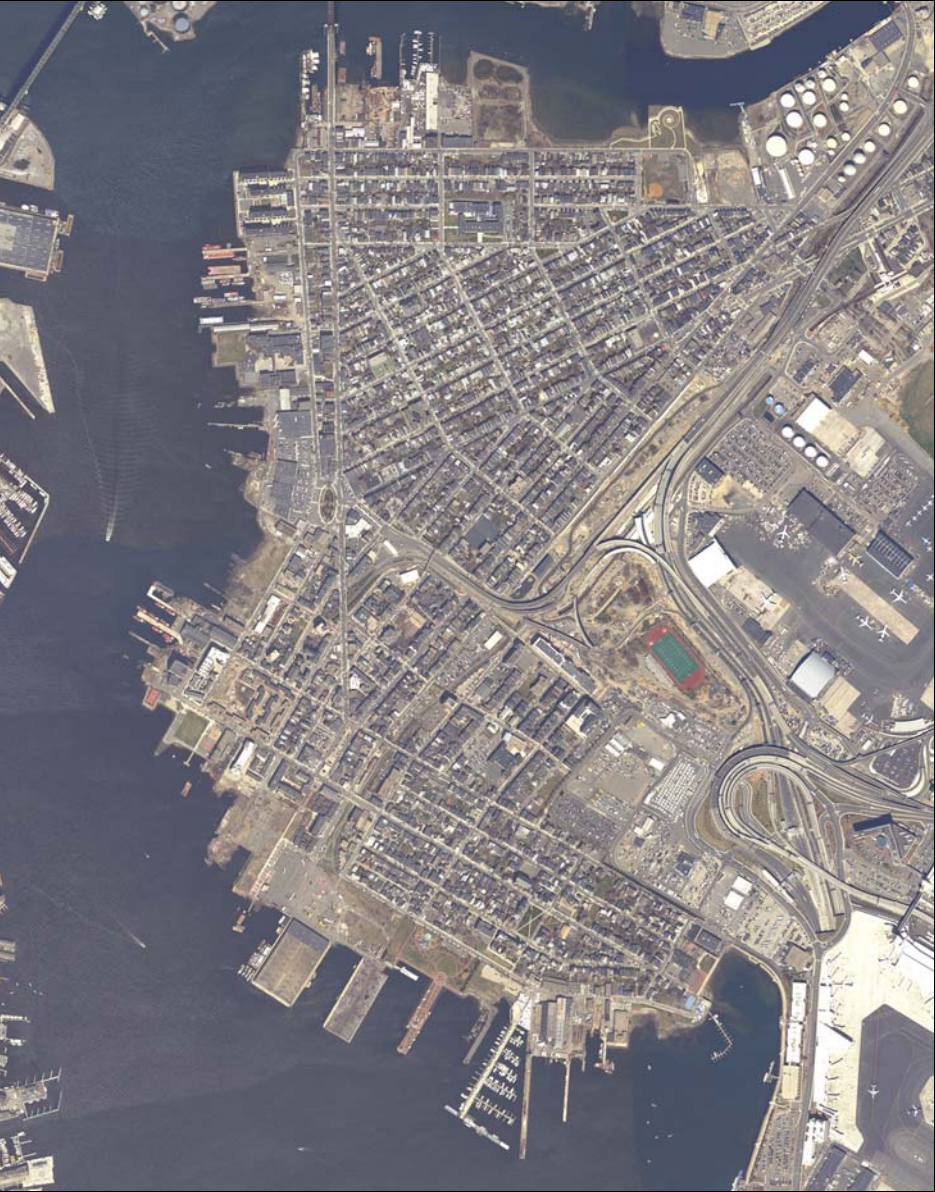
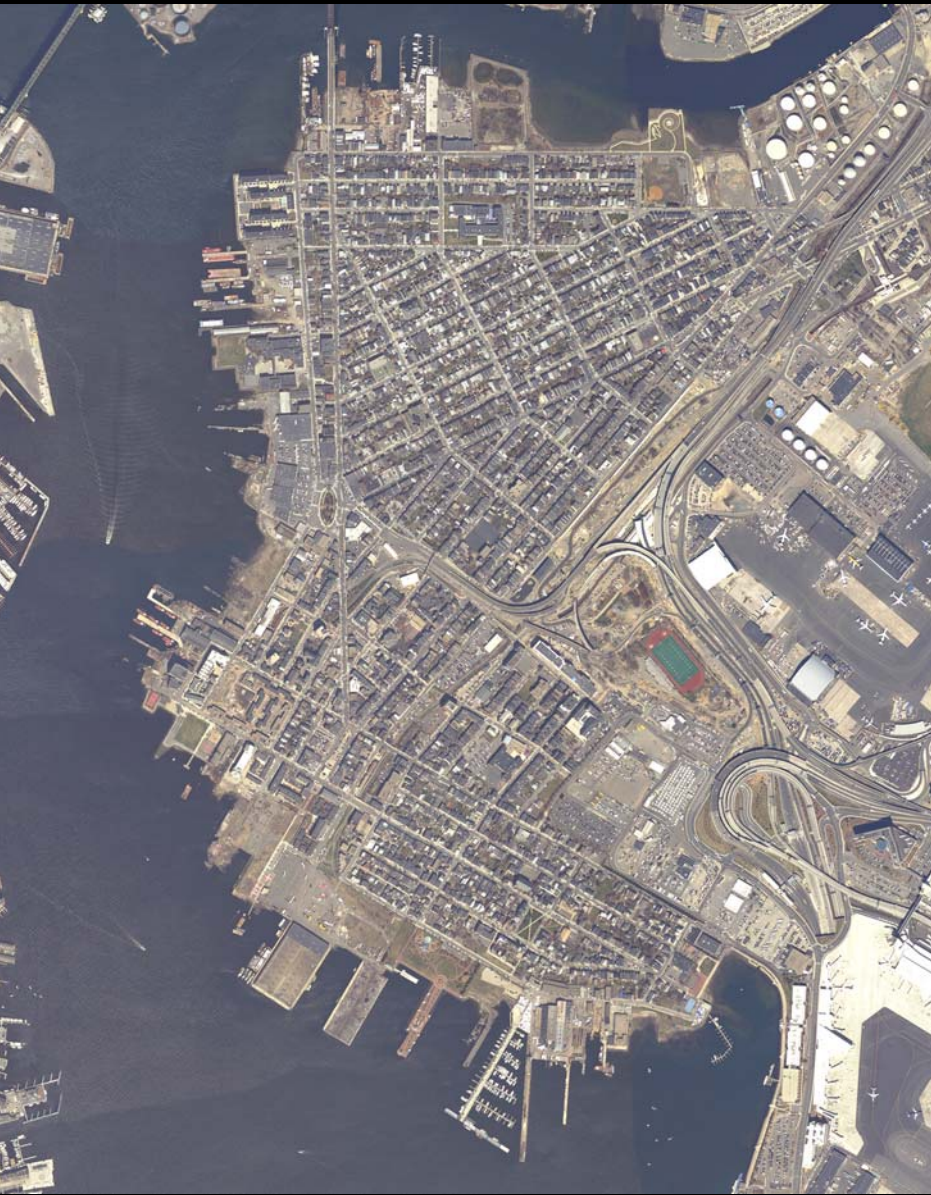


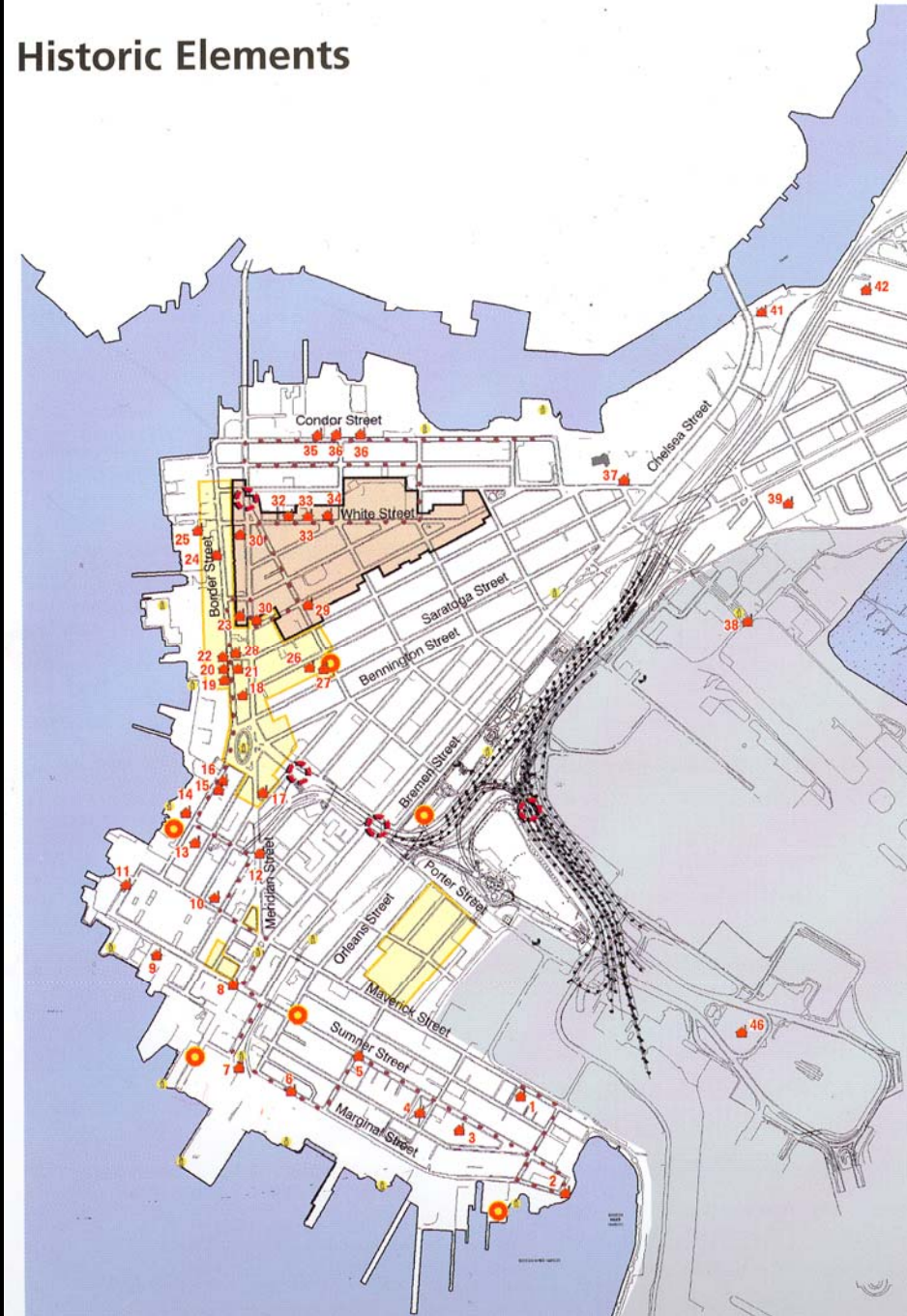
East Boston Waterfront Historical Workshop

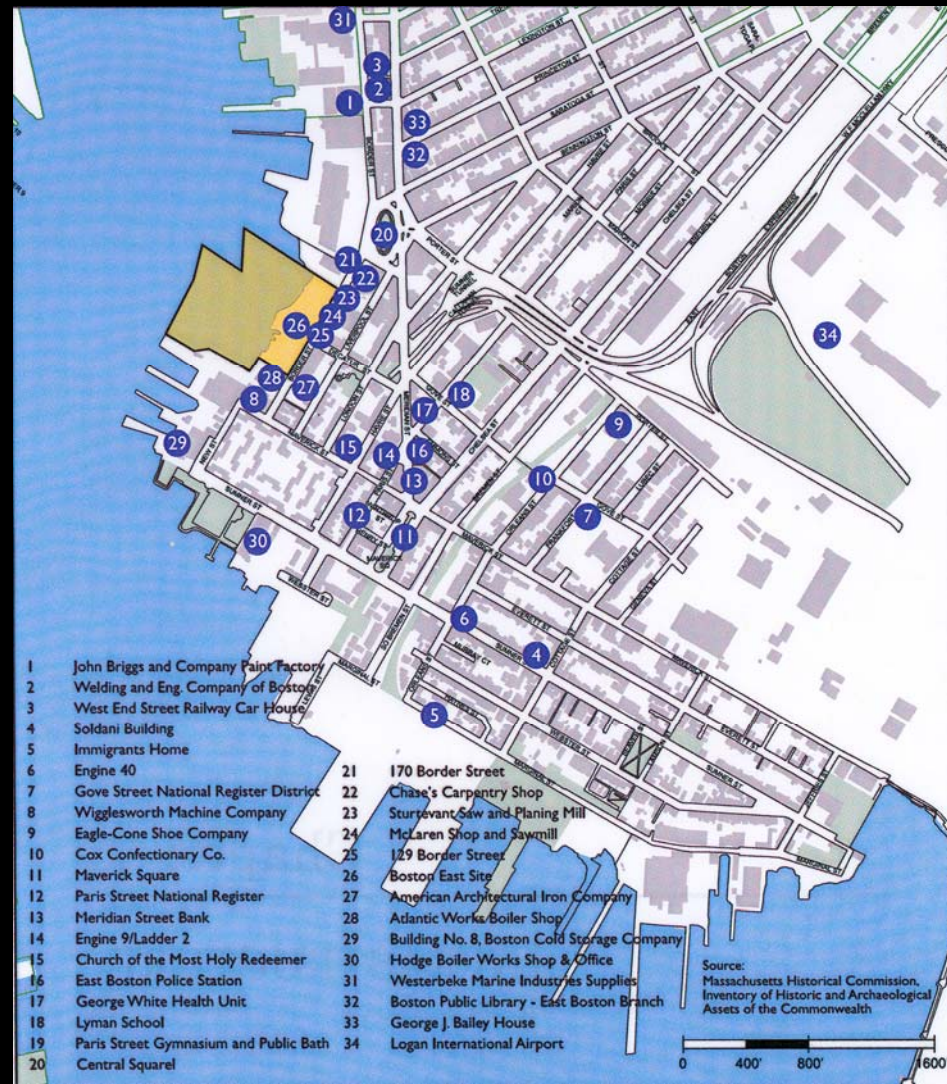
The Cecil Group and Nancy S. Seasholes
Atlantic Works Cultural Exchange Center
February 22, 2008





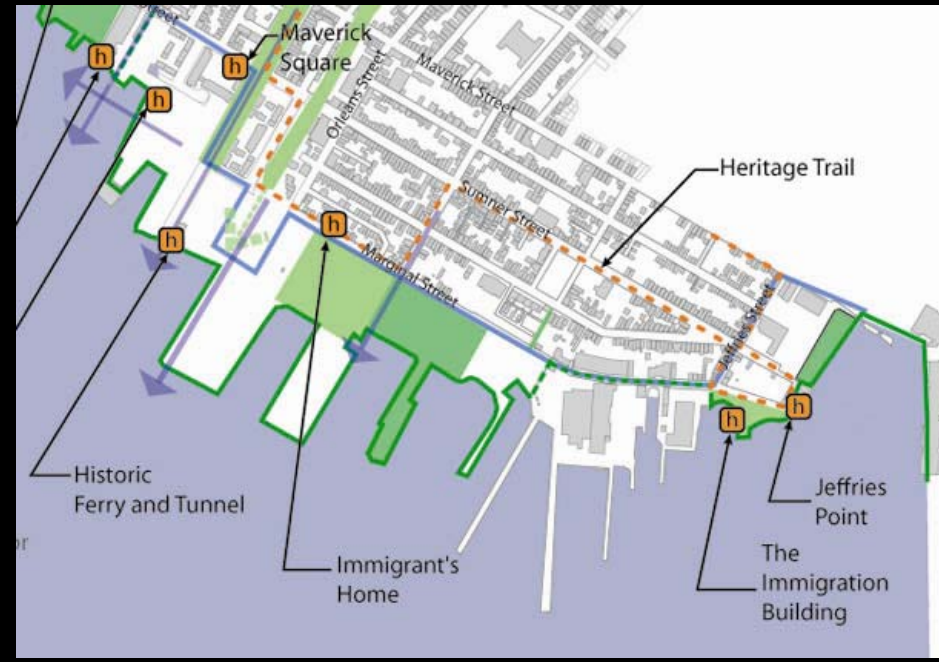
Historic Elements

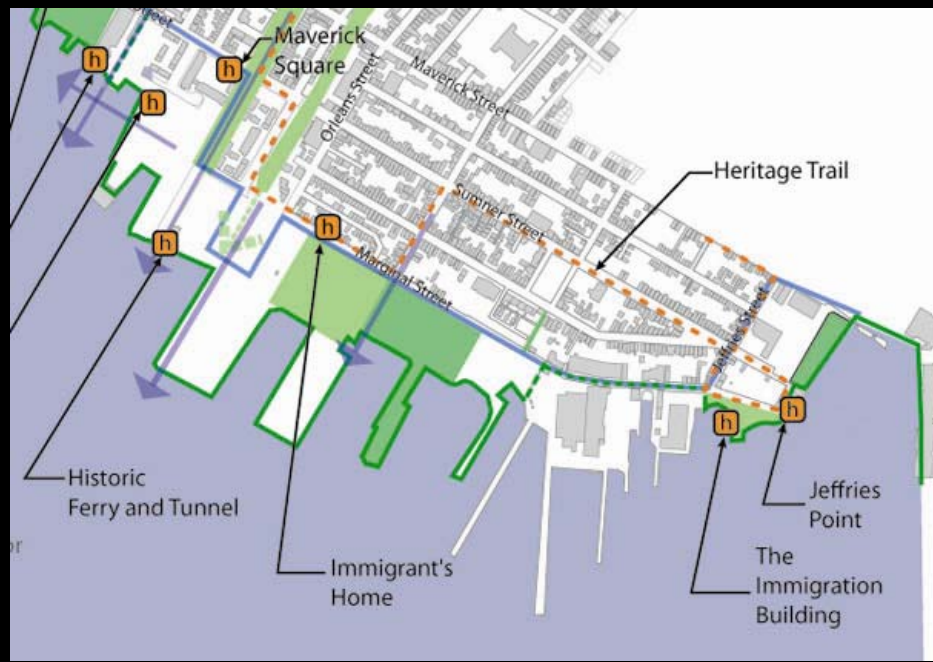
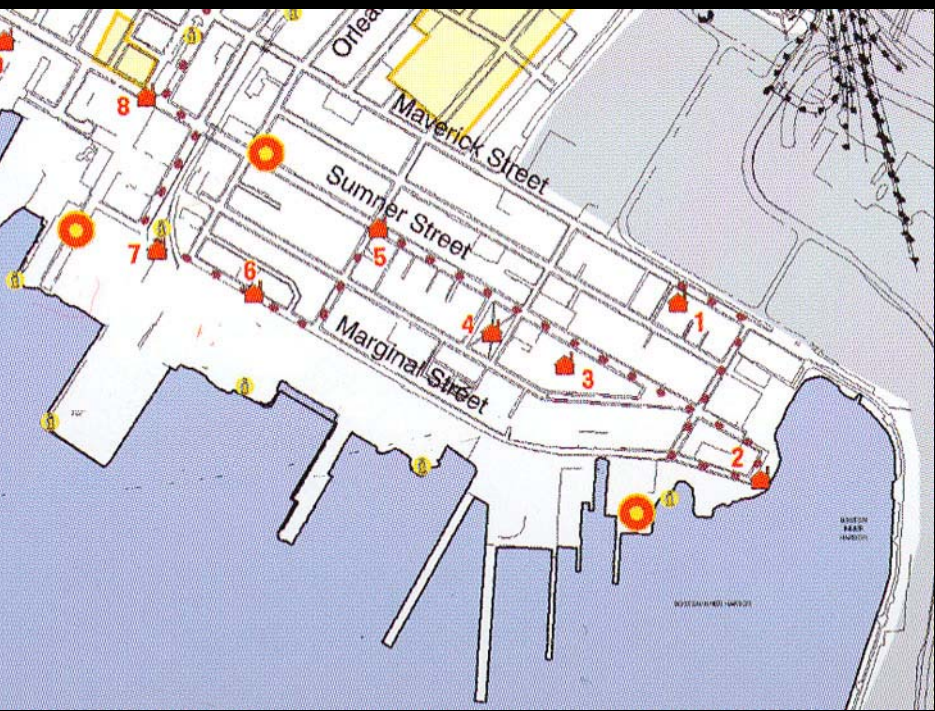


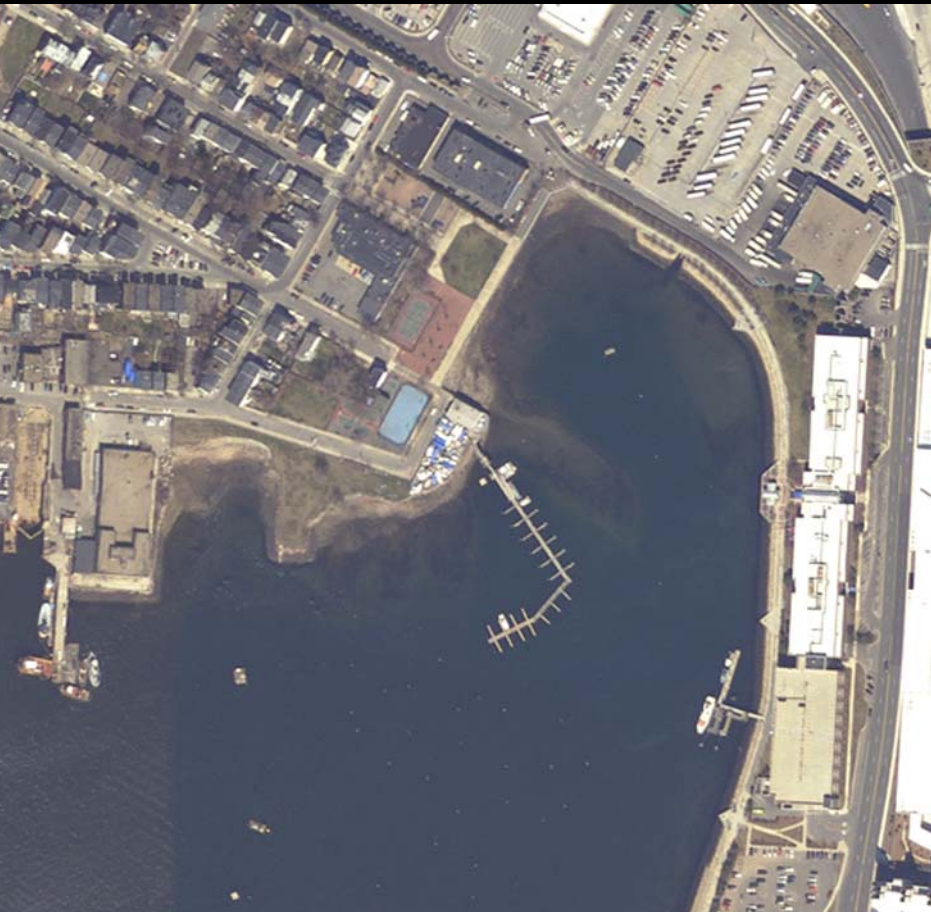


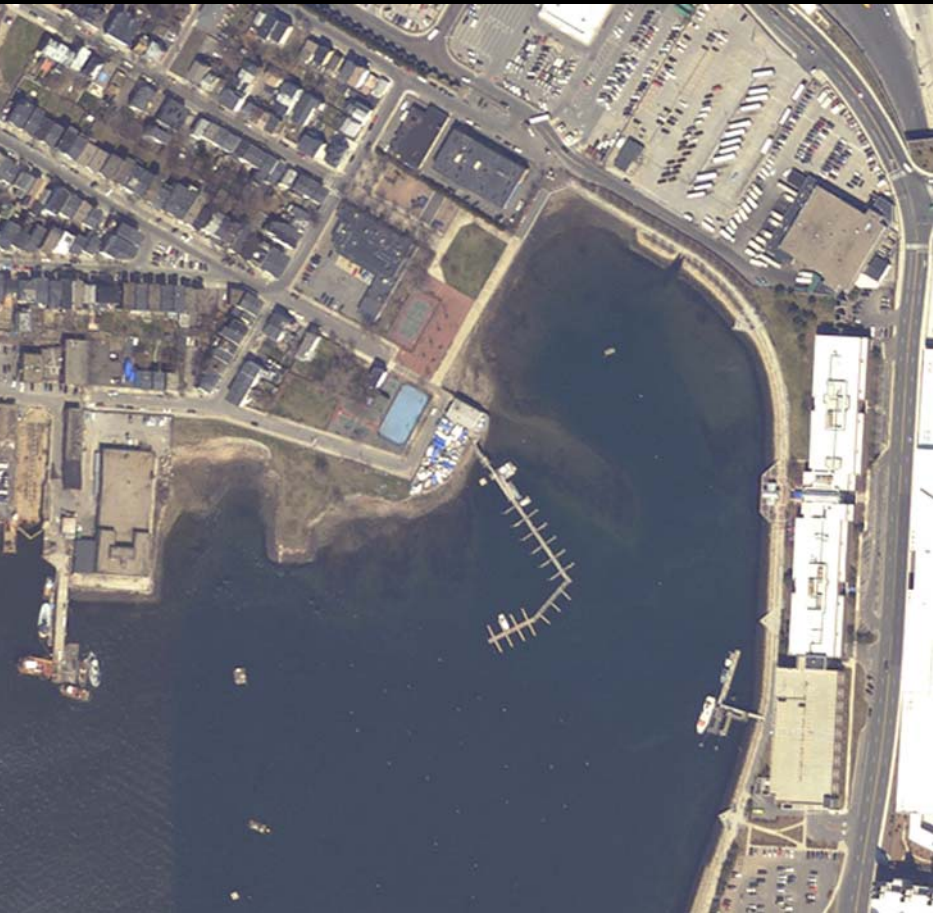
Themes

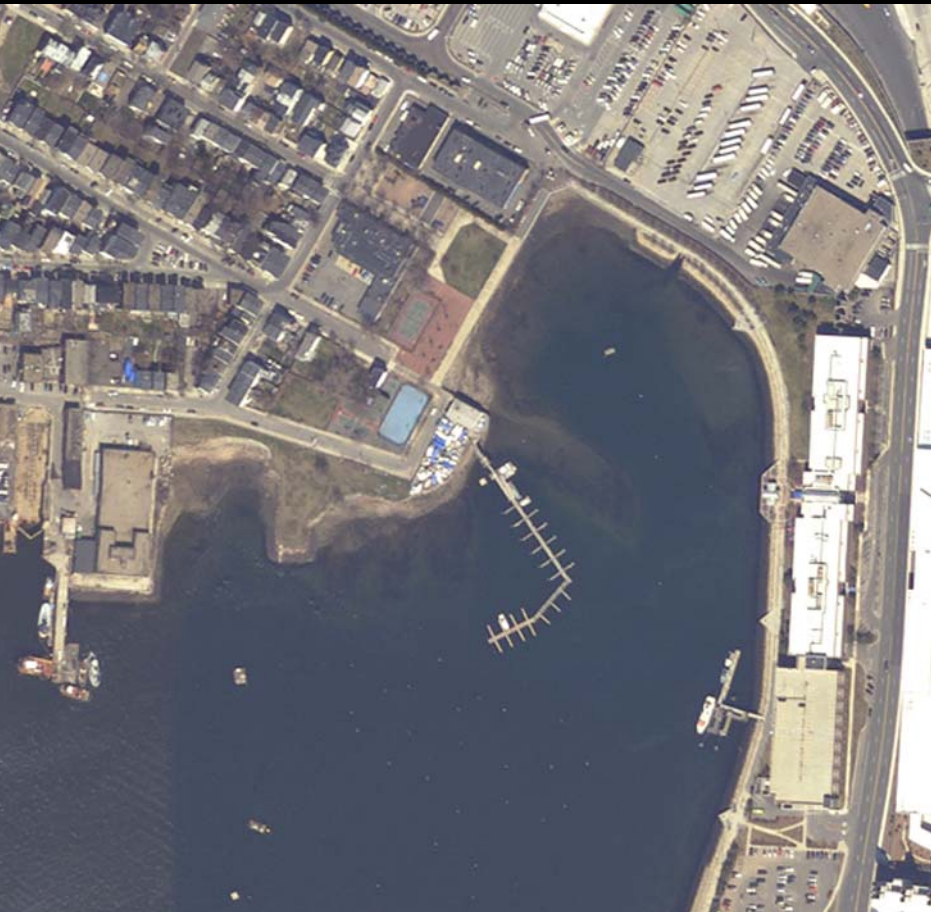
- I. Shipping (freight and passenger)
- II. Shipbuilding and related industries
- III. Railroads (freight and passenger)
- IV. Immigration
- V. East Boston history

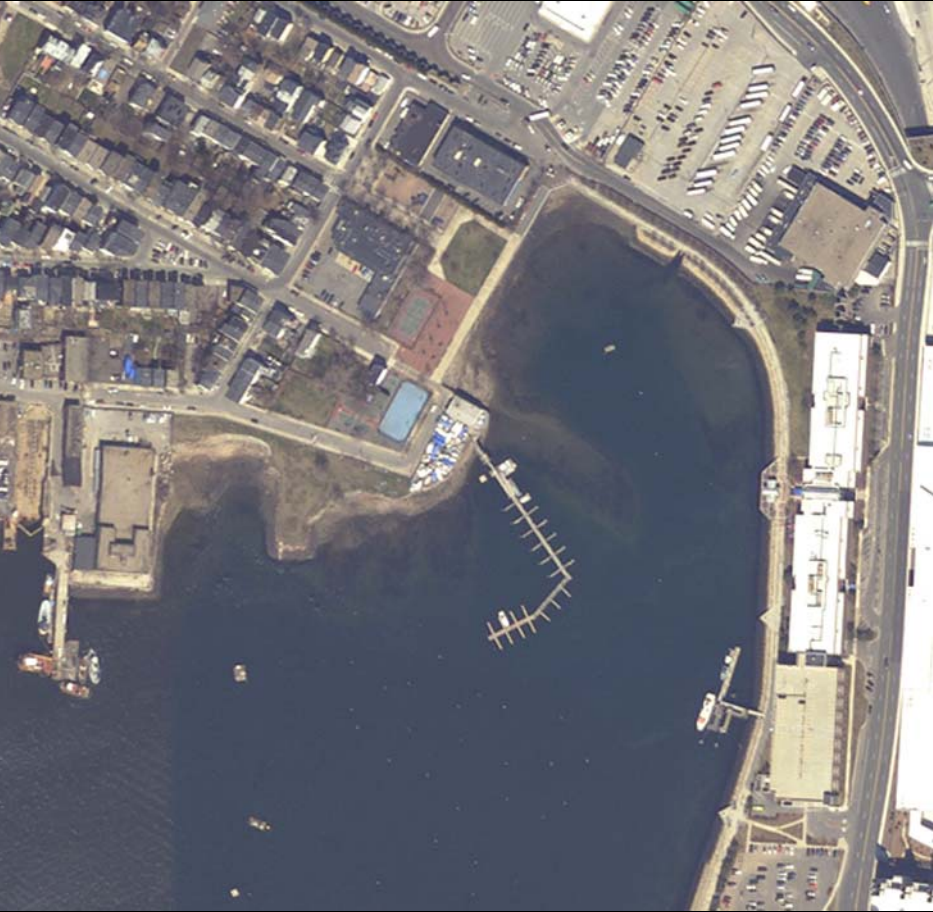


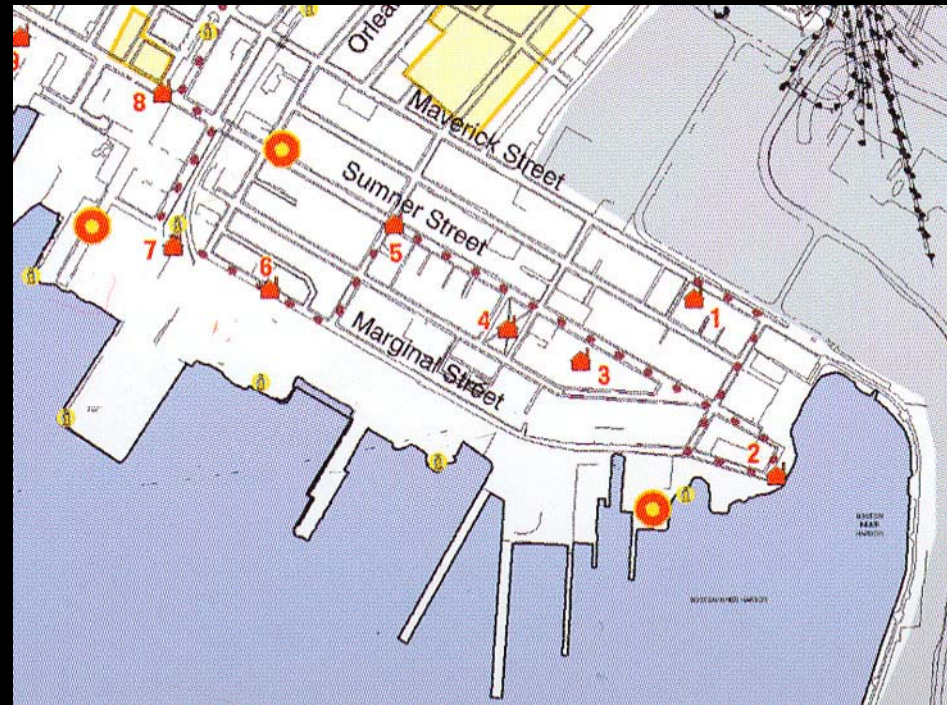
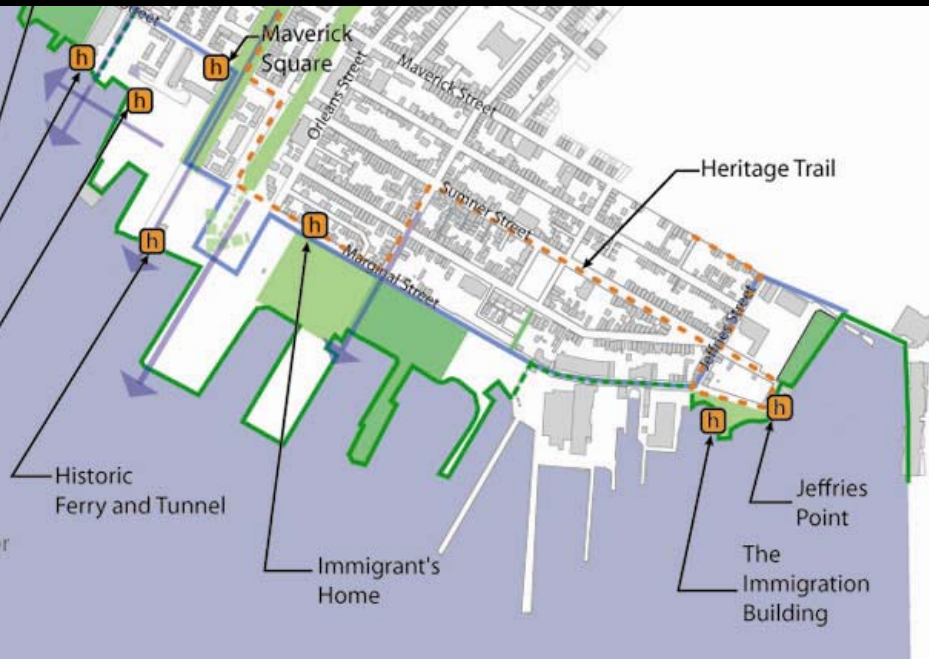


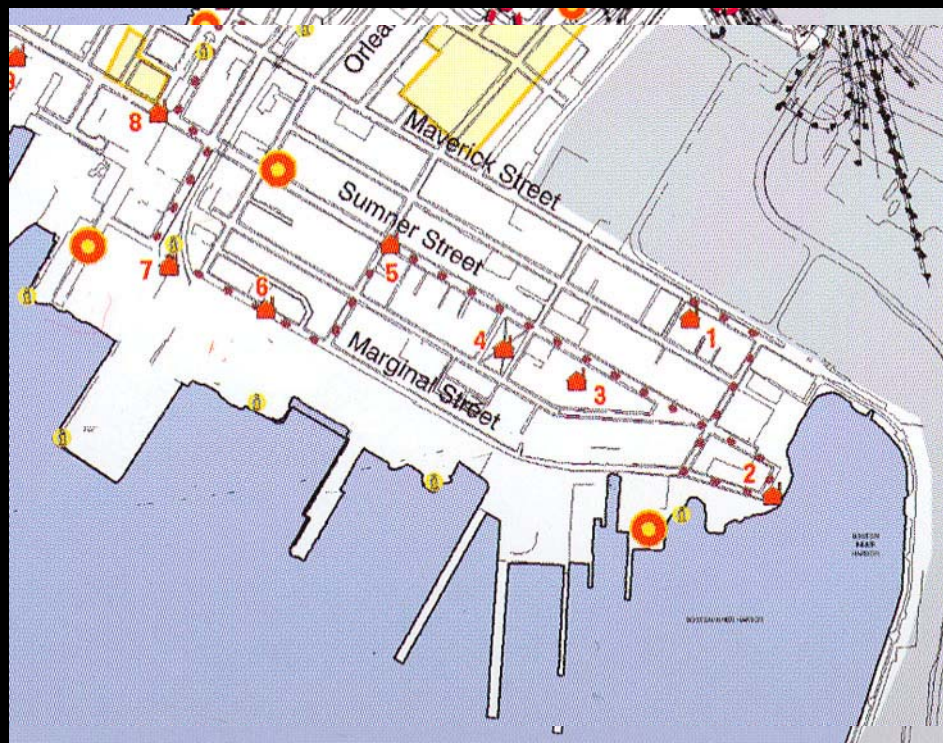






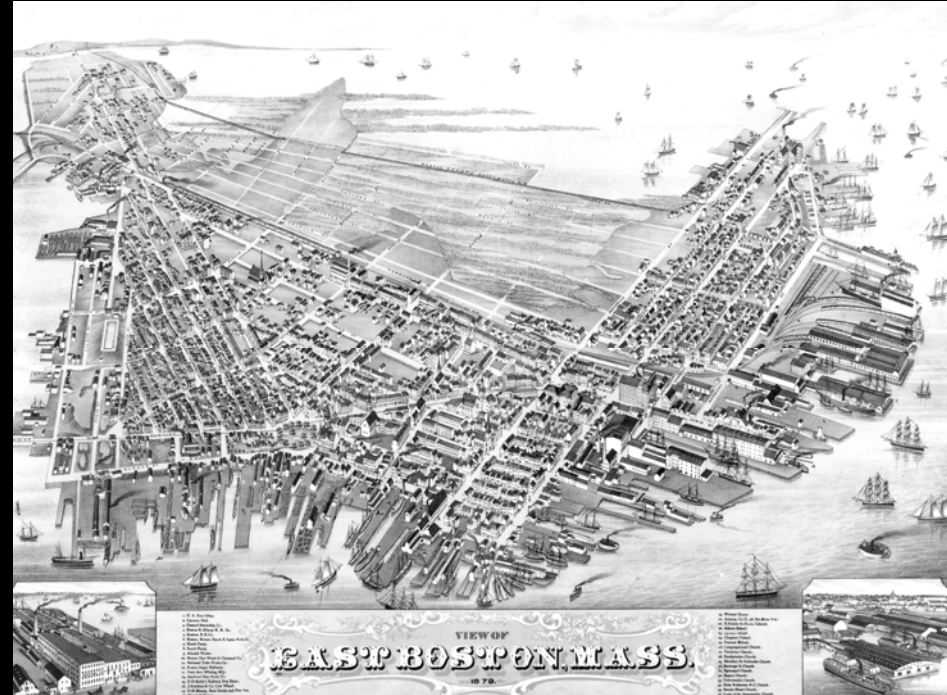


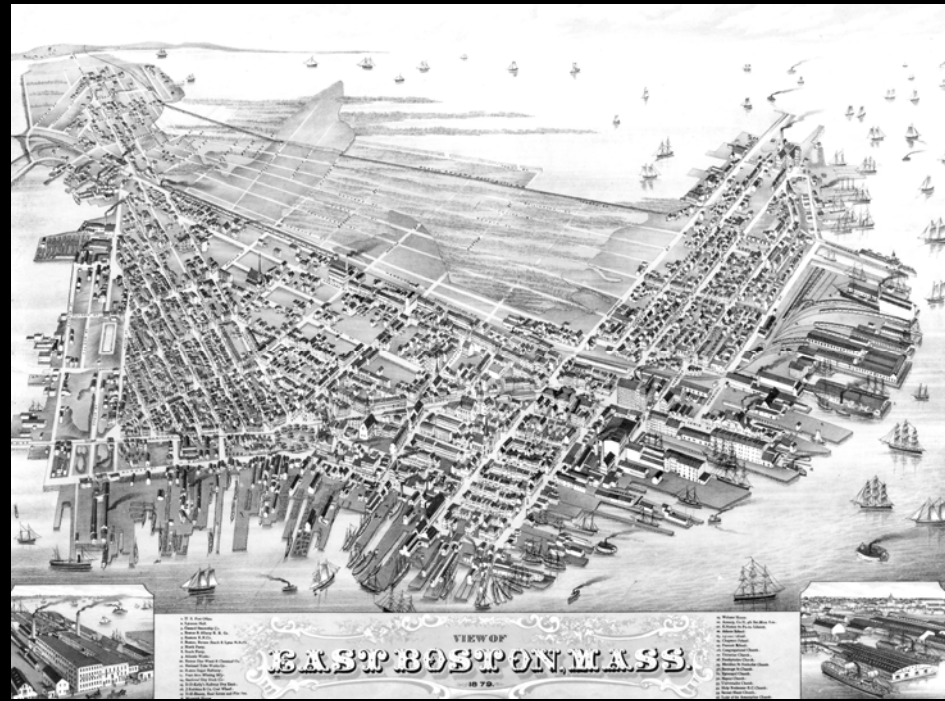
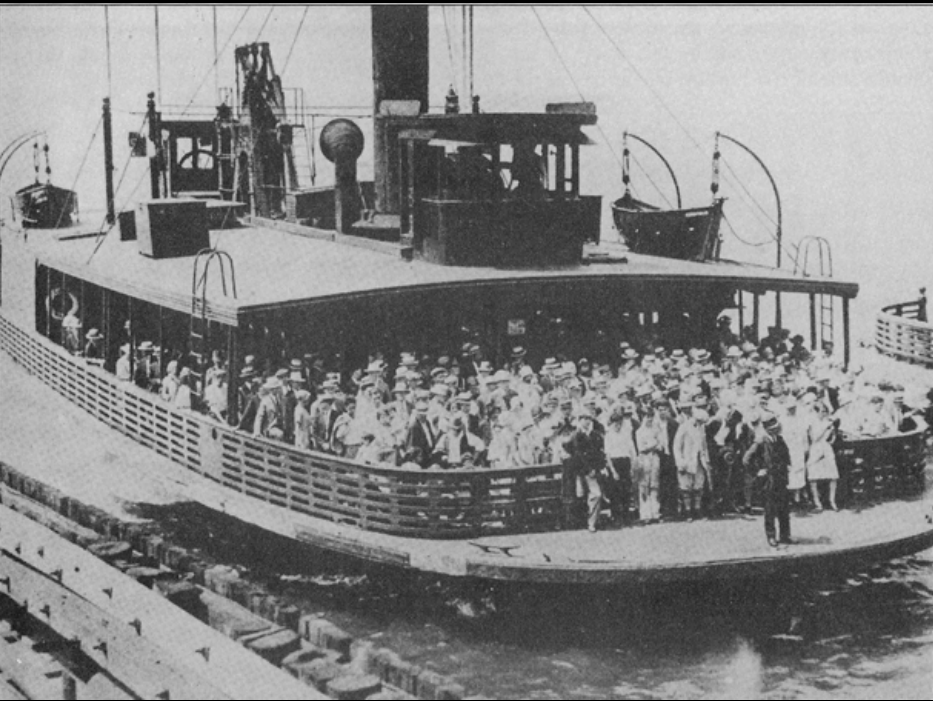


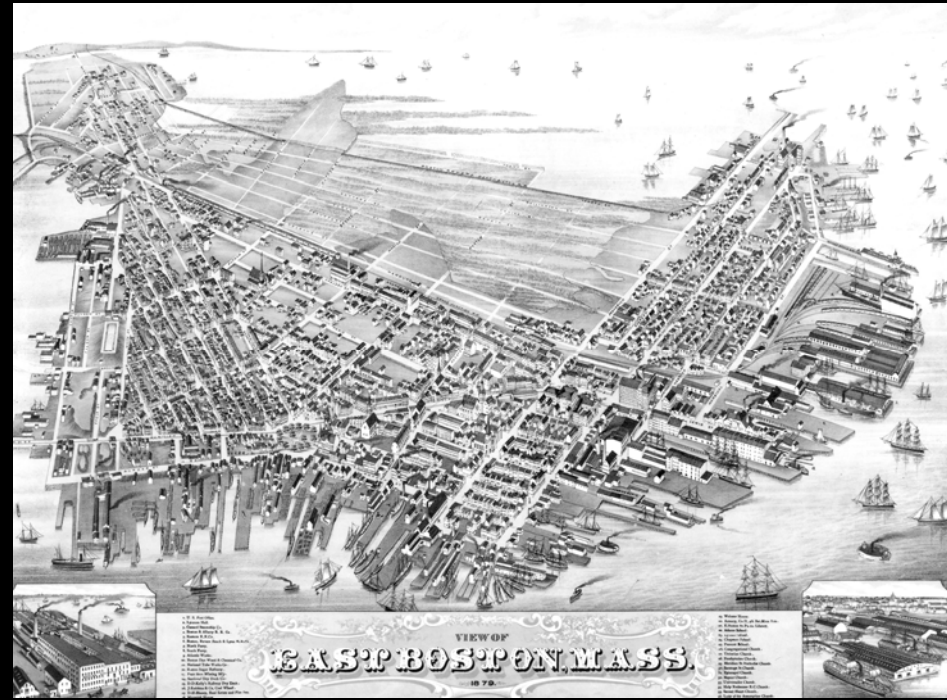


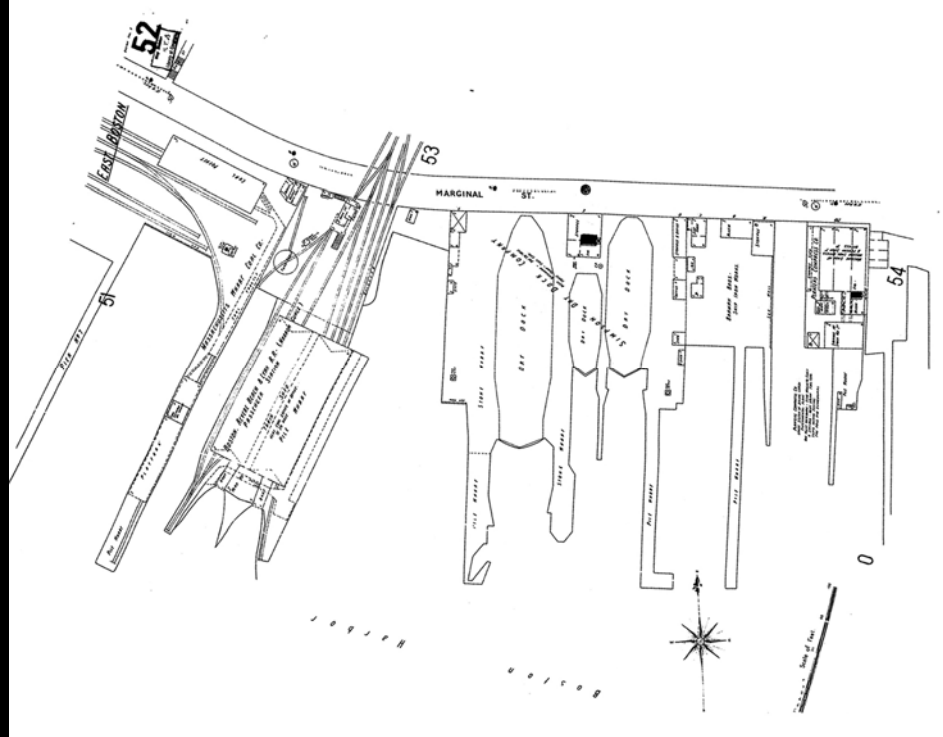


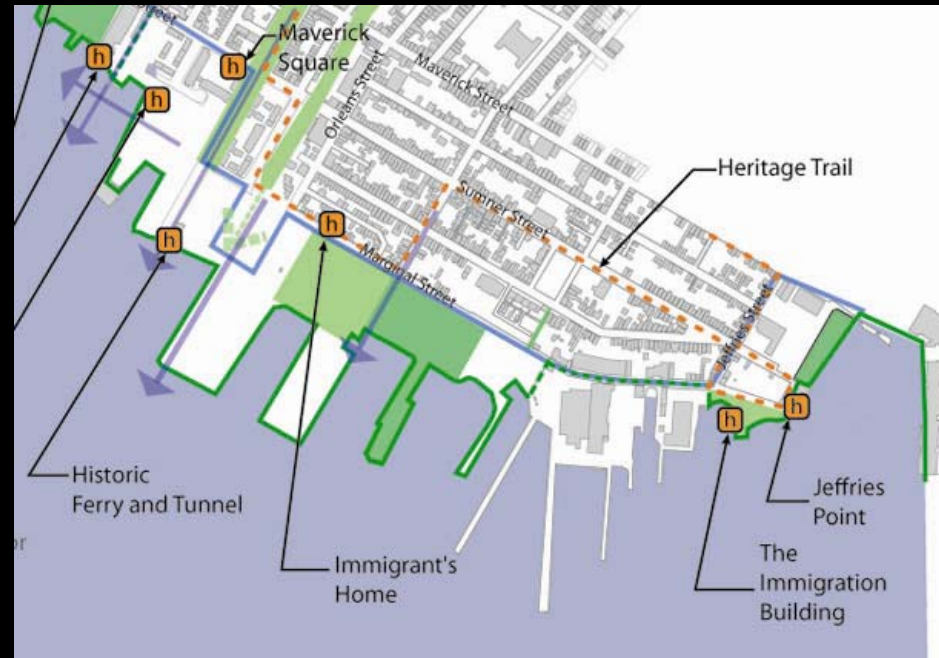






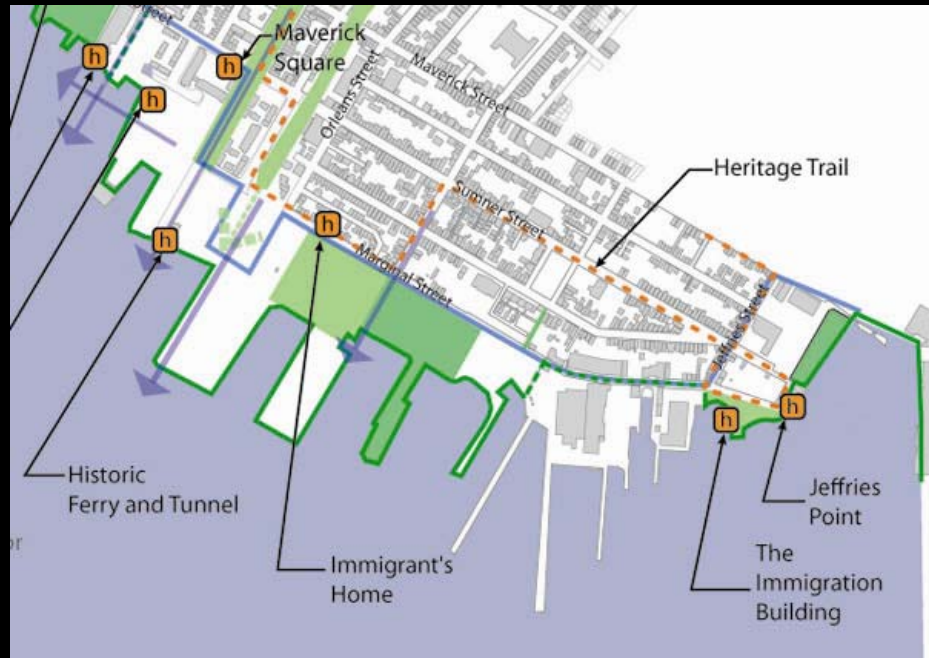






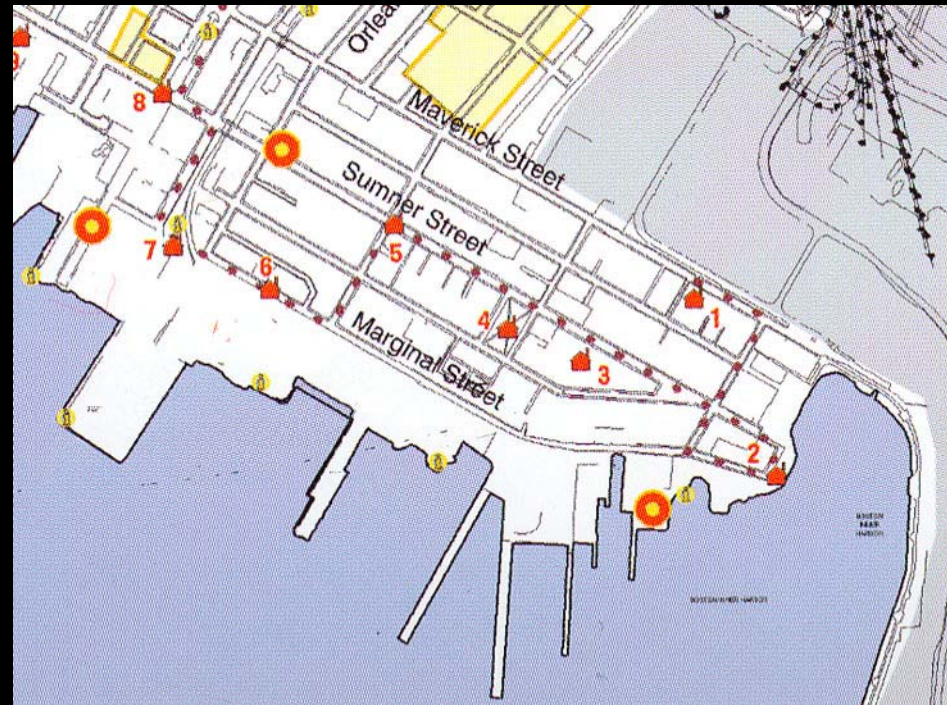
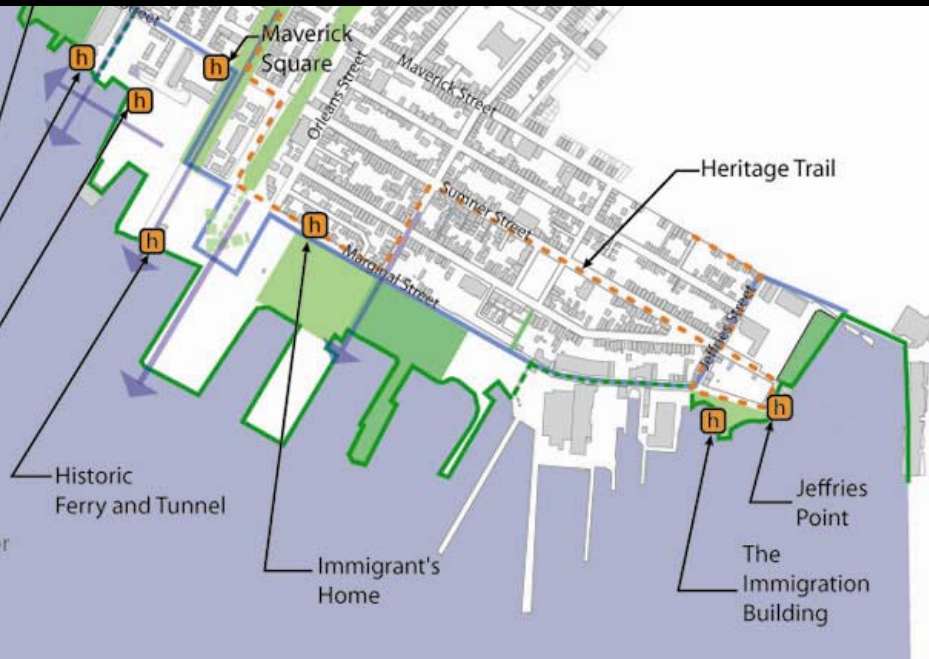


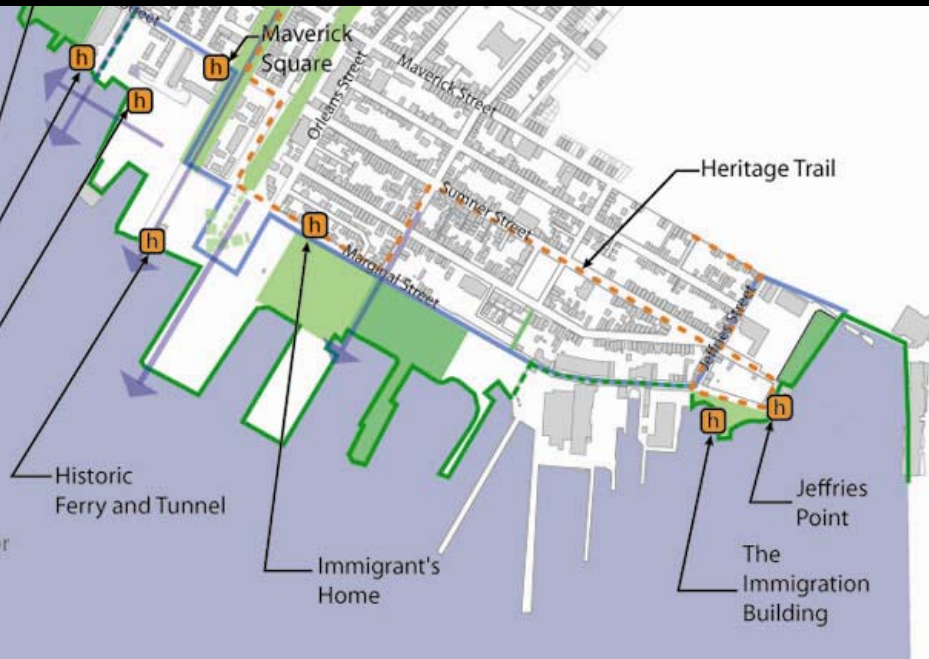


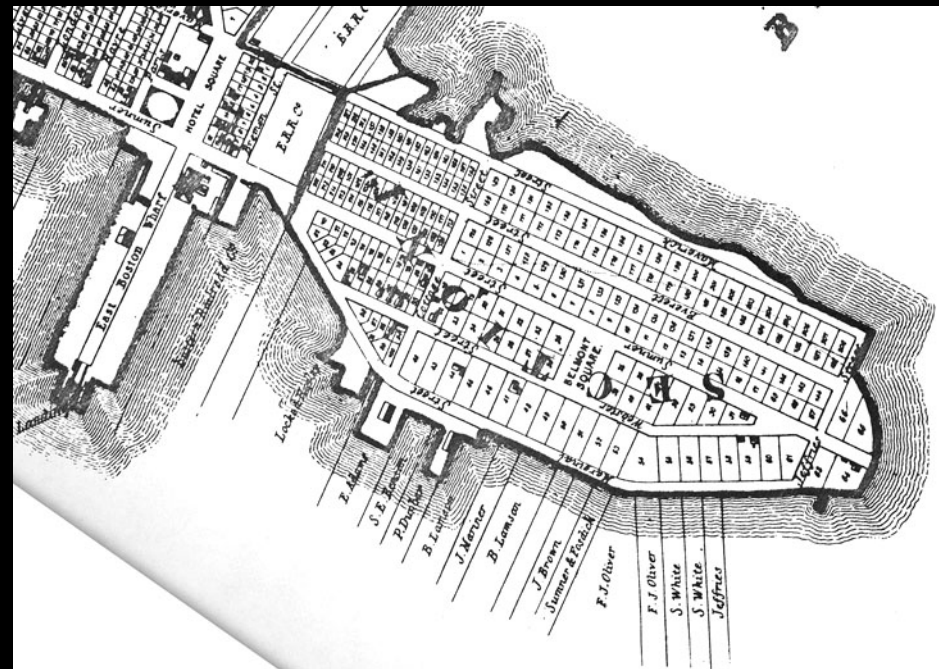


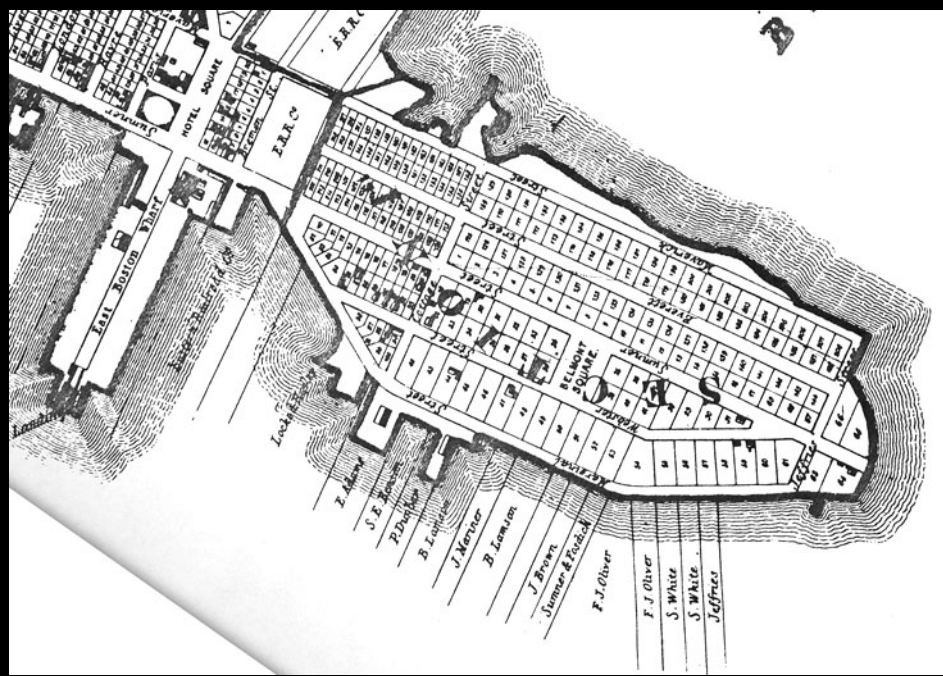


















WEST PANELS

THESE IMAGES REPRESENT CULTURES THAT SHAPED EAST BOSTON AND GAVE US THE PEOPLE WHO LIVE HERE NOW.

THEY SHOW BOTH THE ENDURANCE AND THE FRAGILITY OF CULTURAL IDENTITY. SEVERAL ARTIFACTS THAT INSPIRED THESE DESIGNS WERE DESTROYED BY WAR.

OUR COMMON HERITAGE AS A UNITED PEOPLE GLOWS WITH THE EXUBERANT VARIETY OF CULTURES FROM OTHER DAYS CELEBRATED HERE. WE HOPE THIS HOMAGE TO A VITAL PAST WILL HELP INSPIRE A PEACEFUL FUTURE.

WM P. REIMANN & DAUGHTER

EUROPE

GERMANY: VIKING FACE
ELK HORN CASKET

PANEL X XI

SWITZERLAND: BEAR OF BERNE
& EDELWEISS

HERALDIC IMAGES XV

AUSTRIA: HORSES & HORSEMEN

CELTIC BRONZE BELT

HOOK III C. B.C.



NORTH EUROPE

SWEDEN: TWIN SERPENTS

RUNE STONE VI C.

NORWAY: HELLMARK FLOWERS

EMBROIDERED LINEN XX C.

FLOWERING COLUMNS

& WAVES

CARVED WOOD XV XVIII C.

DENMARK: HORSE

HAMMERED BRONZE VI IX C.



BRITISH ISLES & EUROPE

ENGLAND: ENTWINED ANIMALS

WOODEN CASKET

PANEL VII C.

FRANCE: ORNAMENTAL

OPEN WORK CIRCLE

CAST BRONZE DISK III C. B.C.



EUROPE

HOLLAND: ORANGE

TREE & SUN

WOODCARVING XV

CUTIPS XV

PORCUPINE REPEATING

FLORAL PATTERN

TR. D. 318 XVIII C.











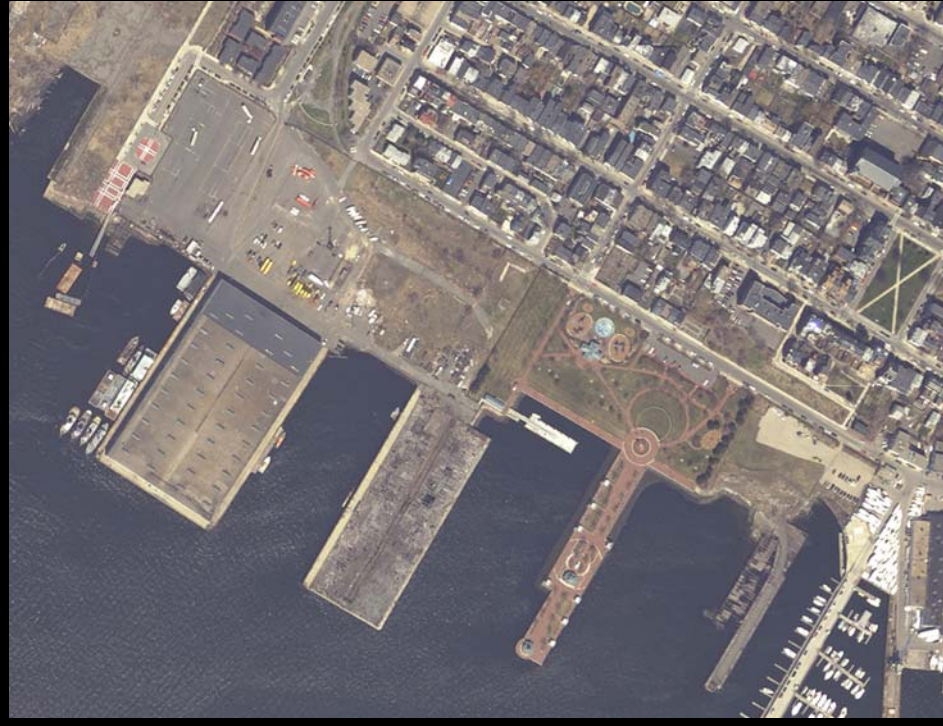
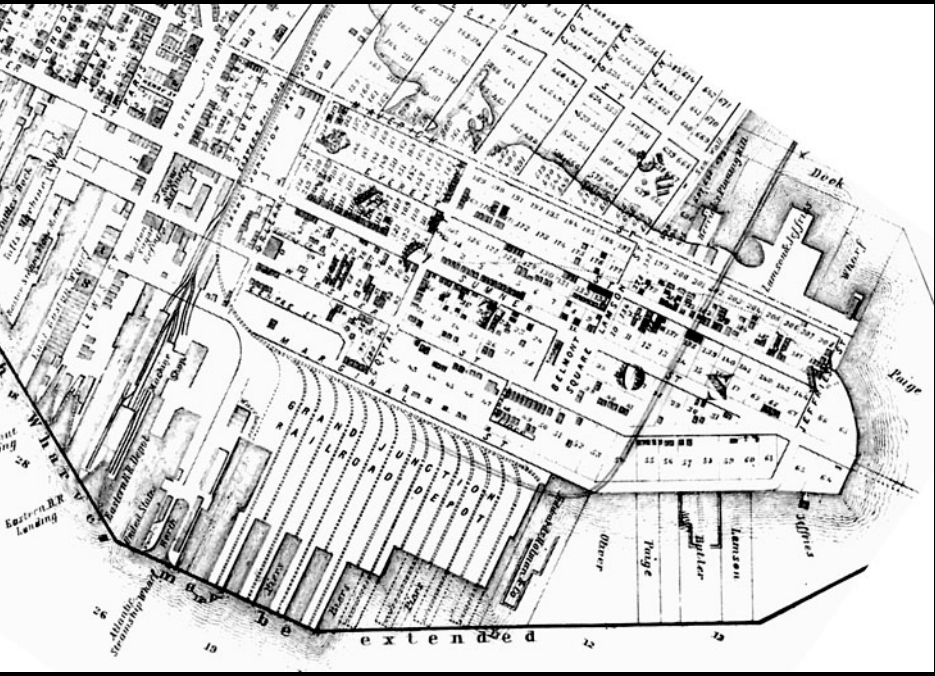


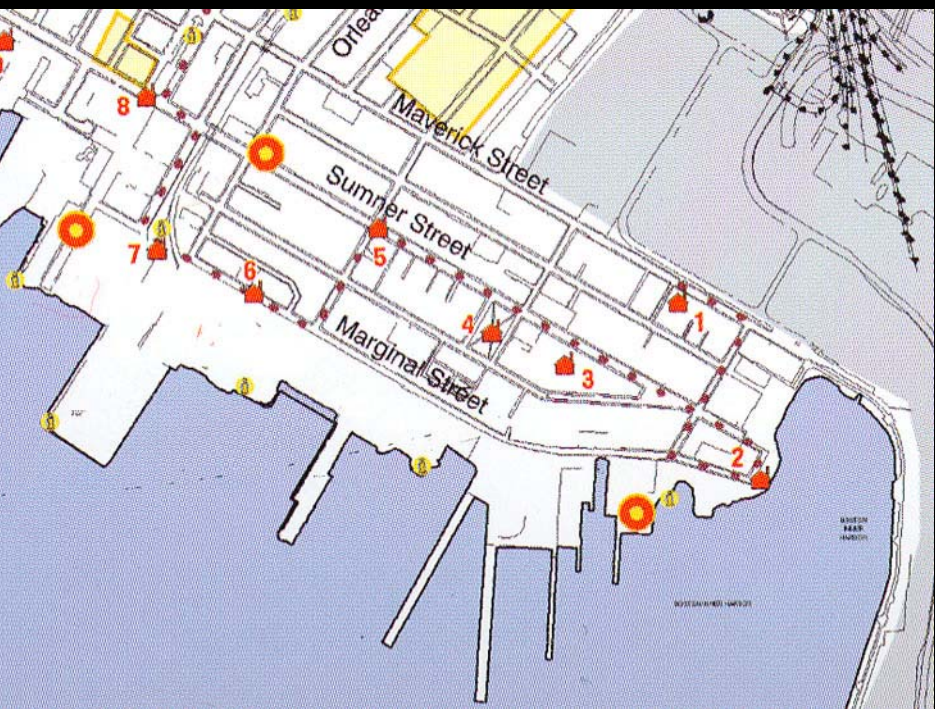


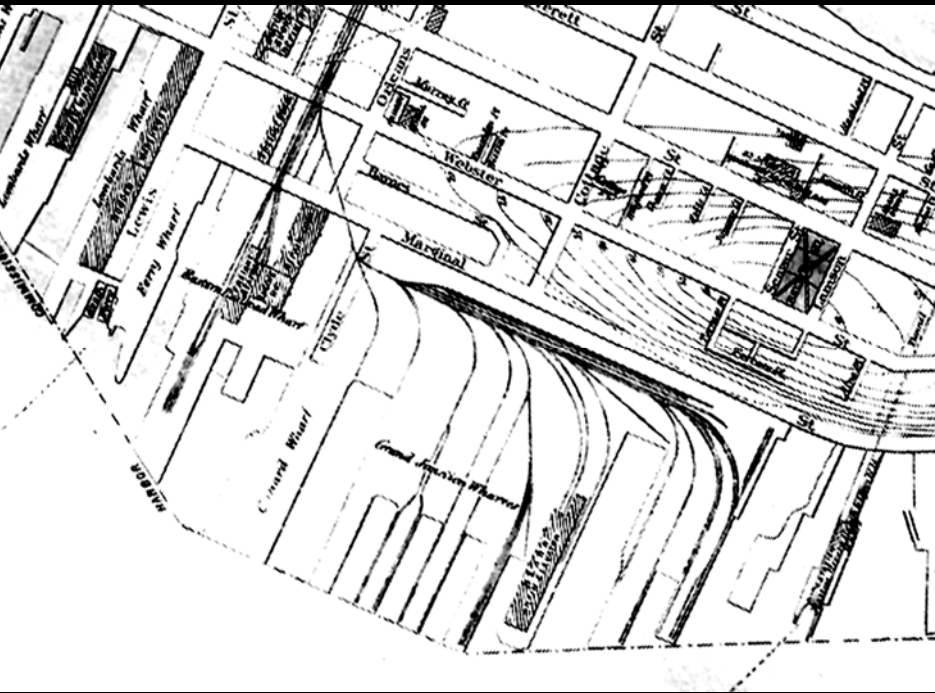


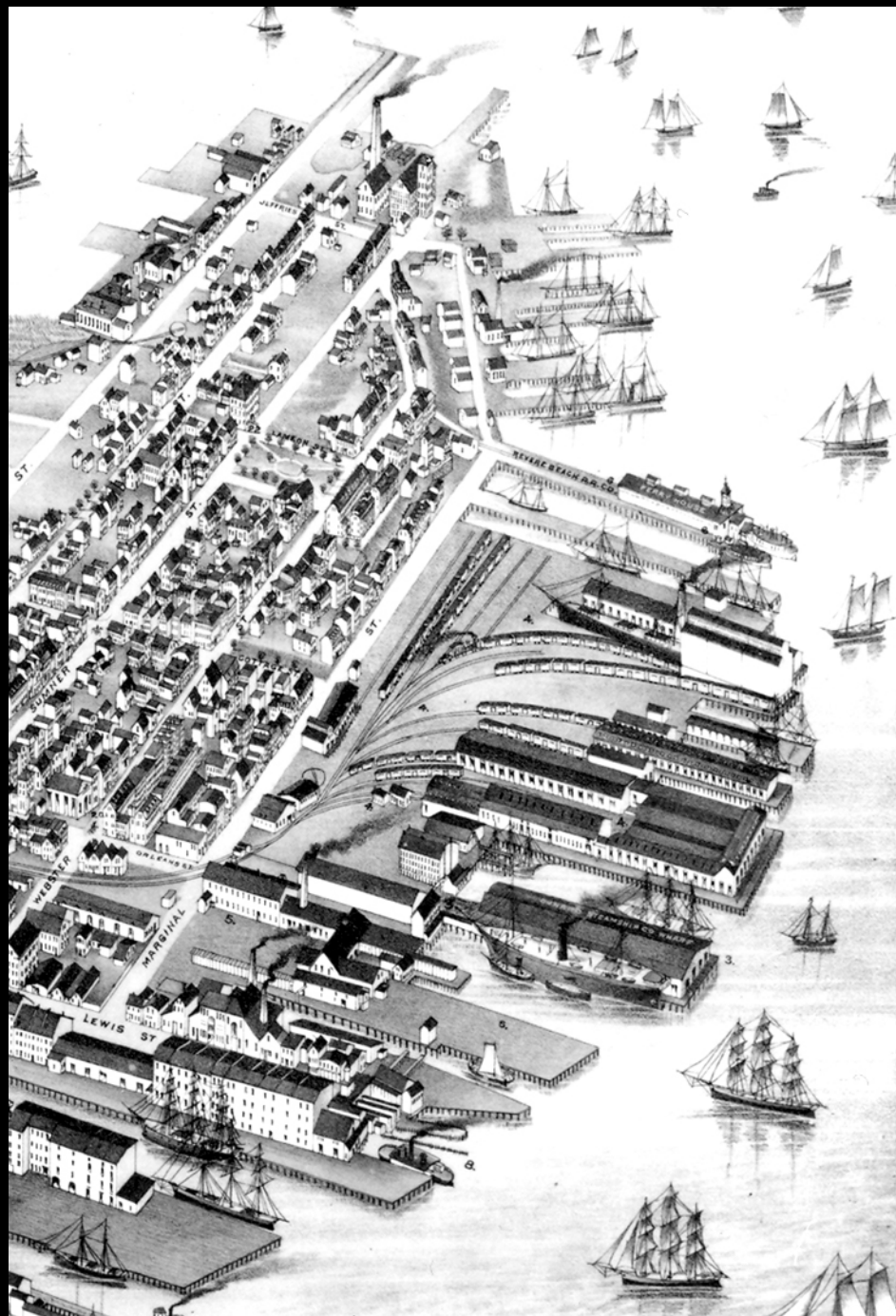




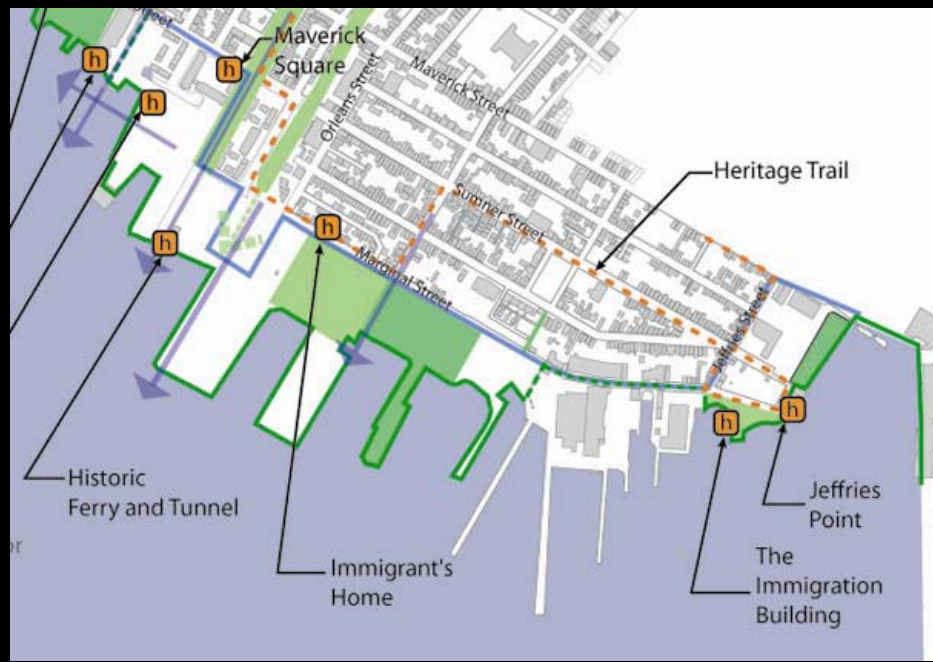
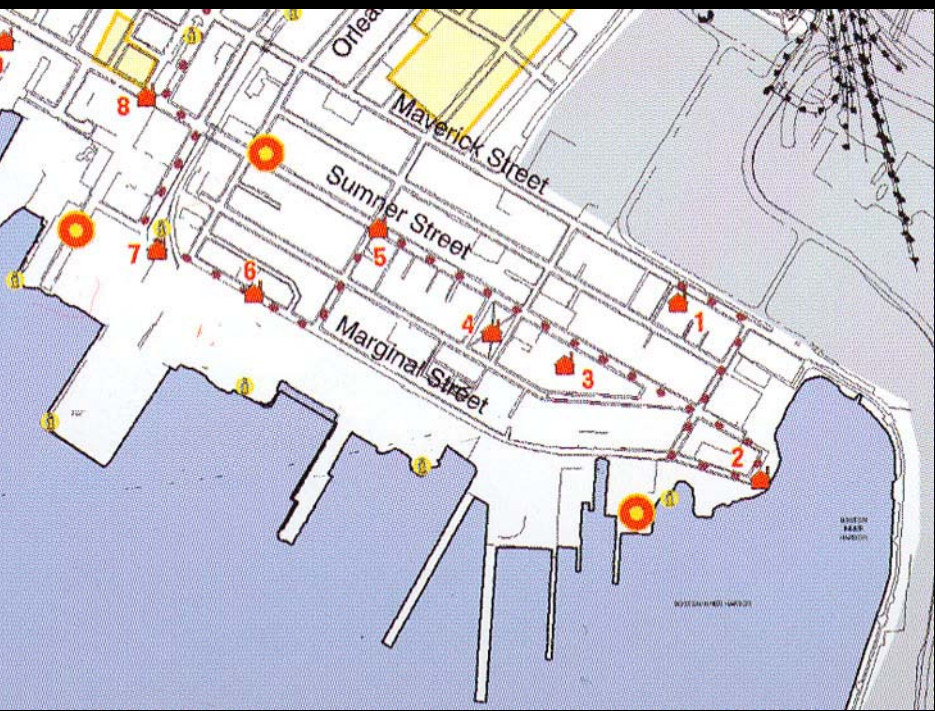




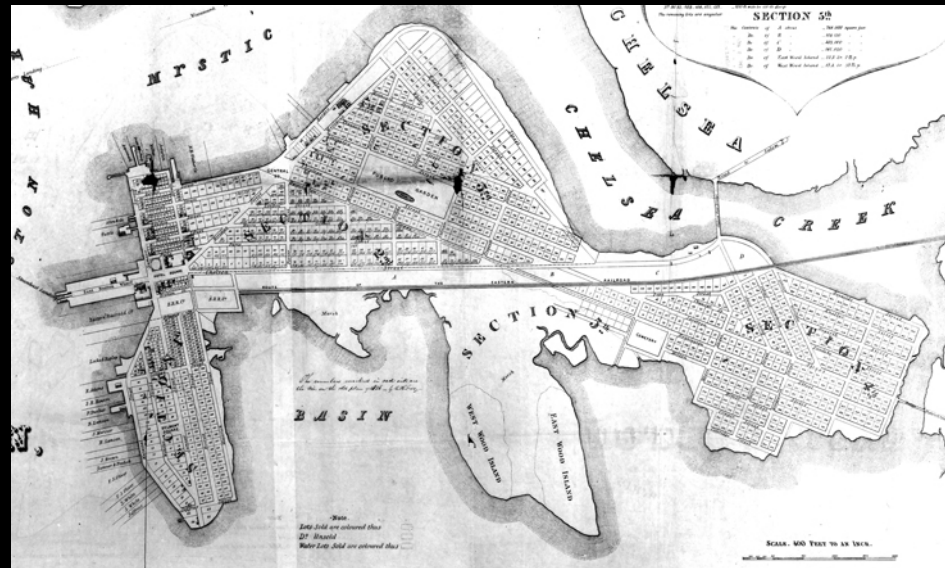
















Jane Swift
Governor

James H. Sexton
Secretary of State

John Corlano, Commissioner
Massachusetts Turnpike
Authority

EAST BOSTON GREENWAY



Dedicated 2002



Thomas M. Menino
Mayor

Andrea D'Amico
Chief of Environmental Services

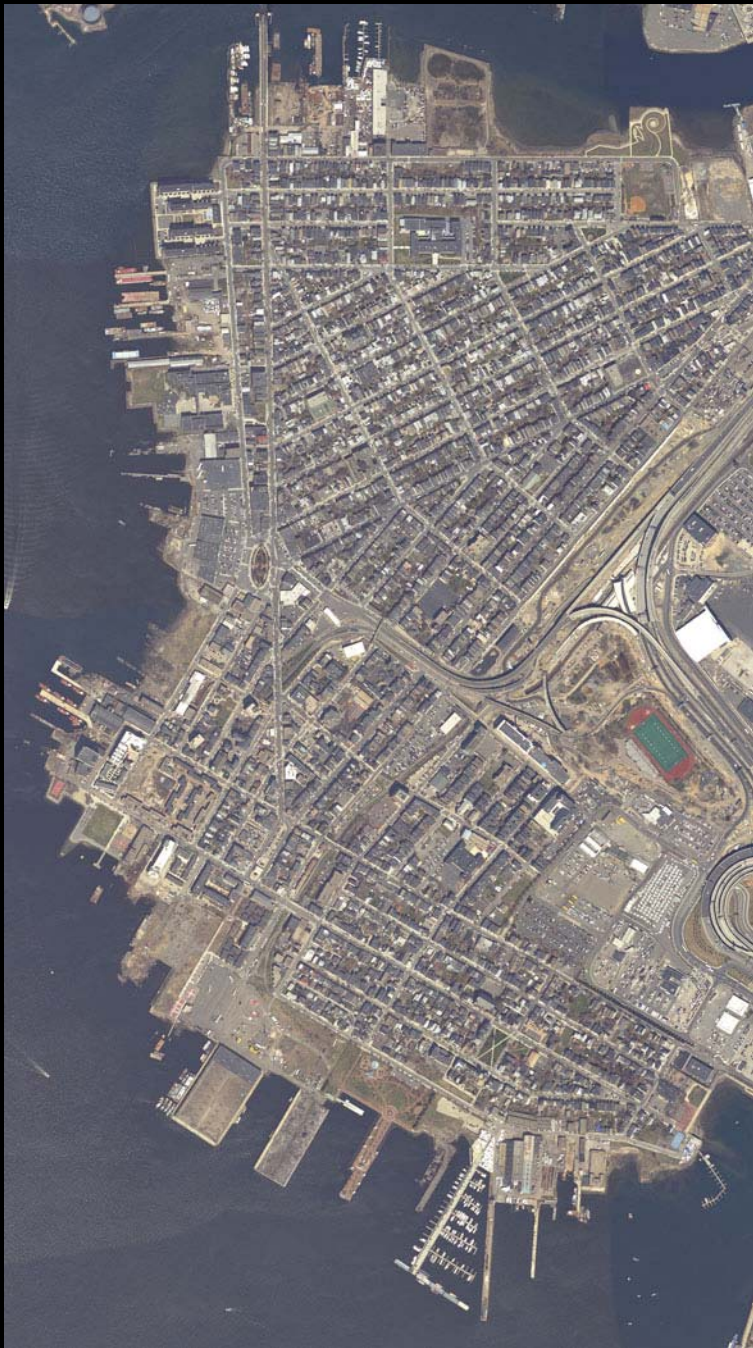
Justin M. Lih, Commissioner
Parks & Recreation Department

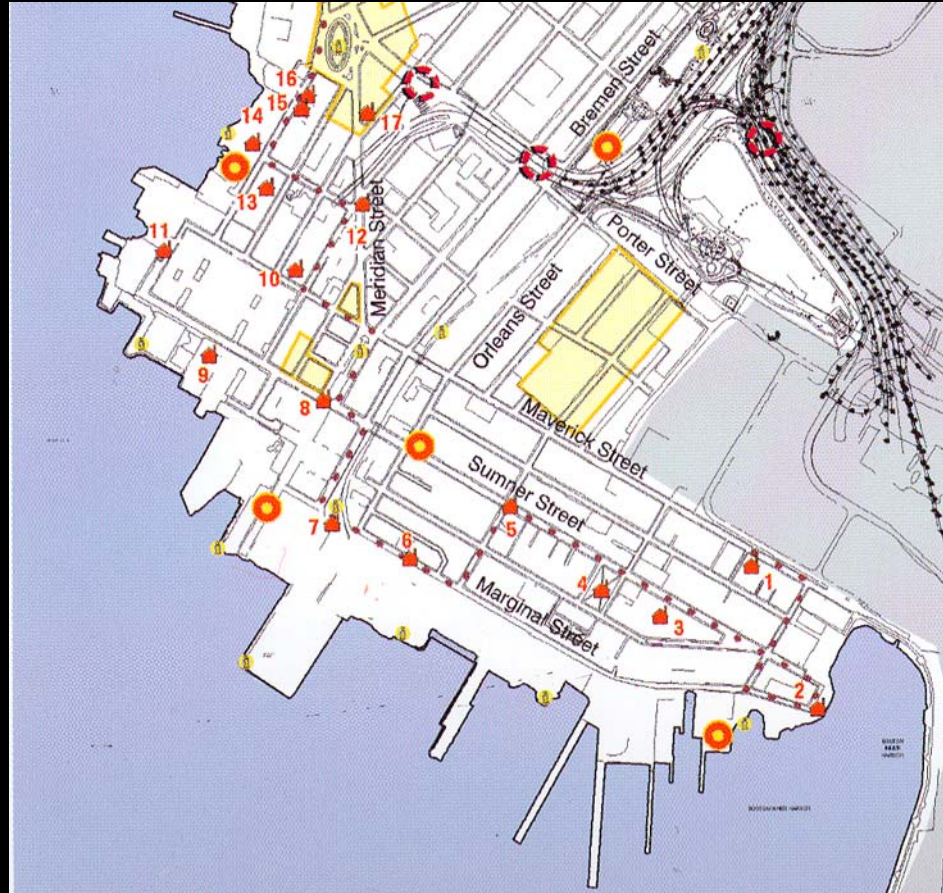
This first half-mile of the three mile East Boston Greenway will extend from Marginal Street to Belle Isle Marsh, providing a new open space resource for public enjoyment. Development of this linear park has been sponsored by the Federal Highway Administration, the City of Boston and the East Boston Greenway Council, with assistance from the Boston Regional Areas Network, the Trust for Public Land and East Boston residents.

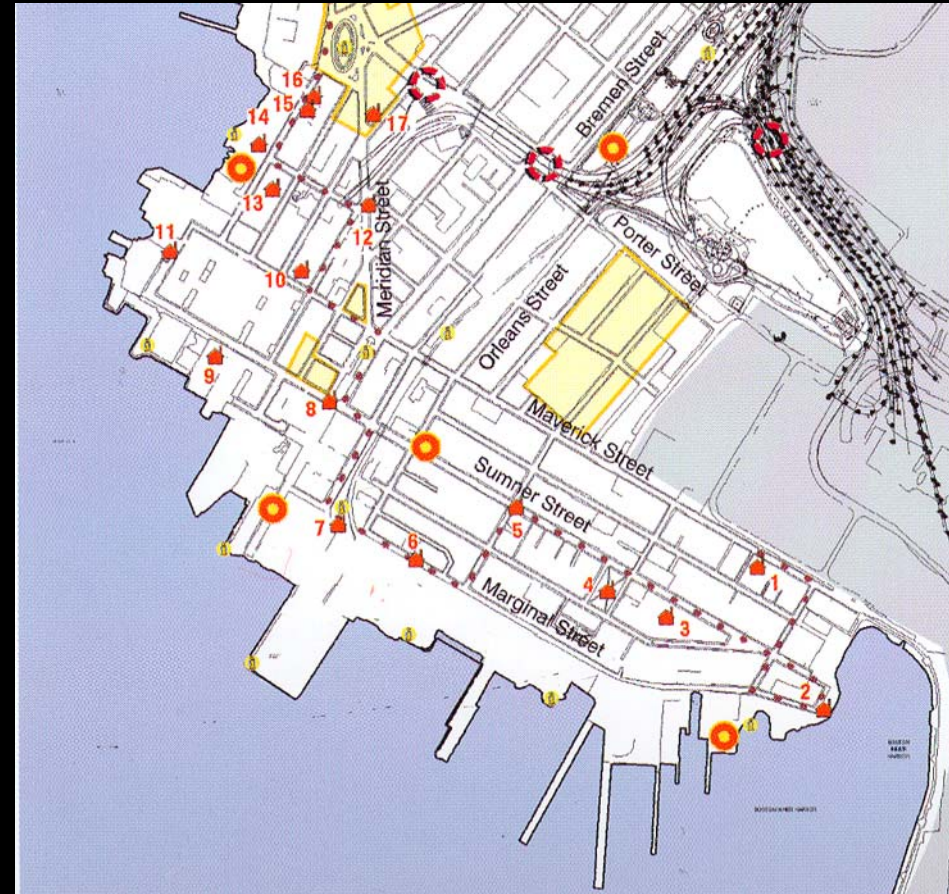
For many decades this site served as a busy railroad corridor that was important in the history and development of commerce in East Boston. The railroad caboose has been donated by Conrail Railroad Corporation. A similar caboose was often stationed close by and served as a kitchen facility for dock workers unloading ships at the adjacent East Boston piers.

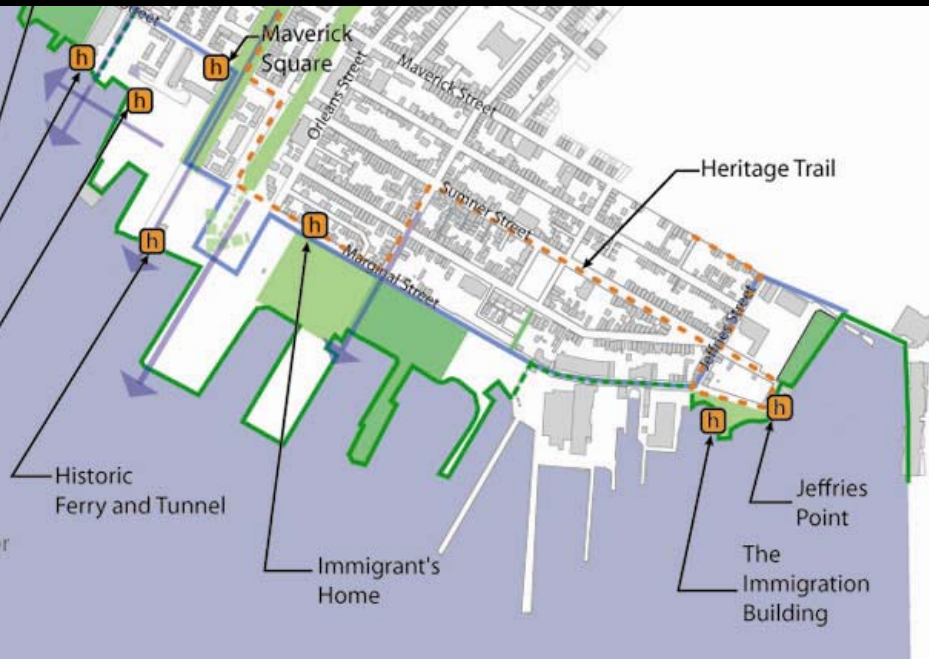




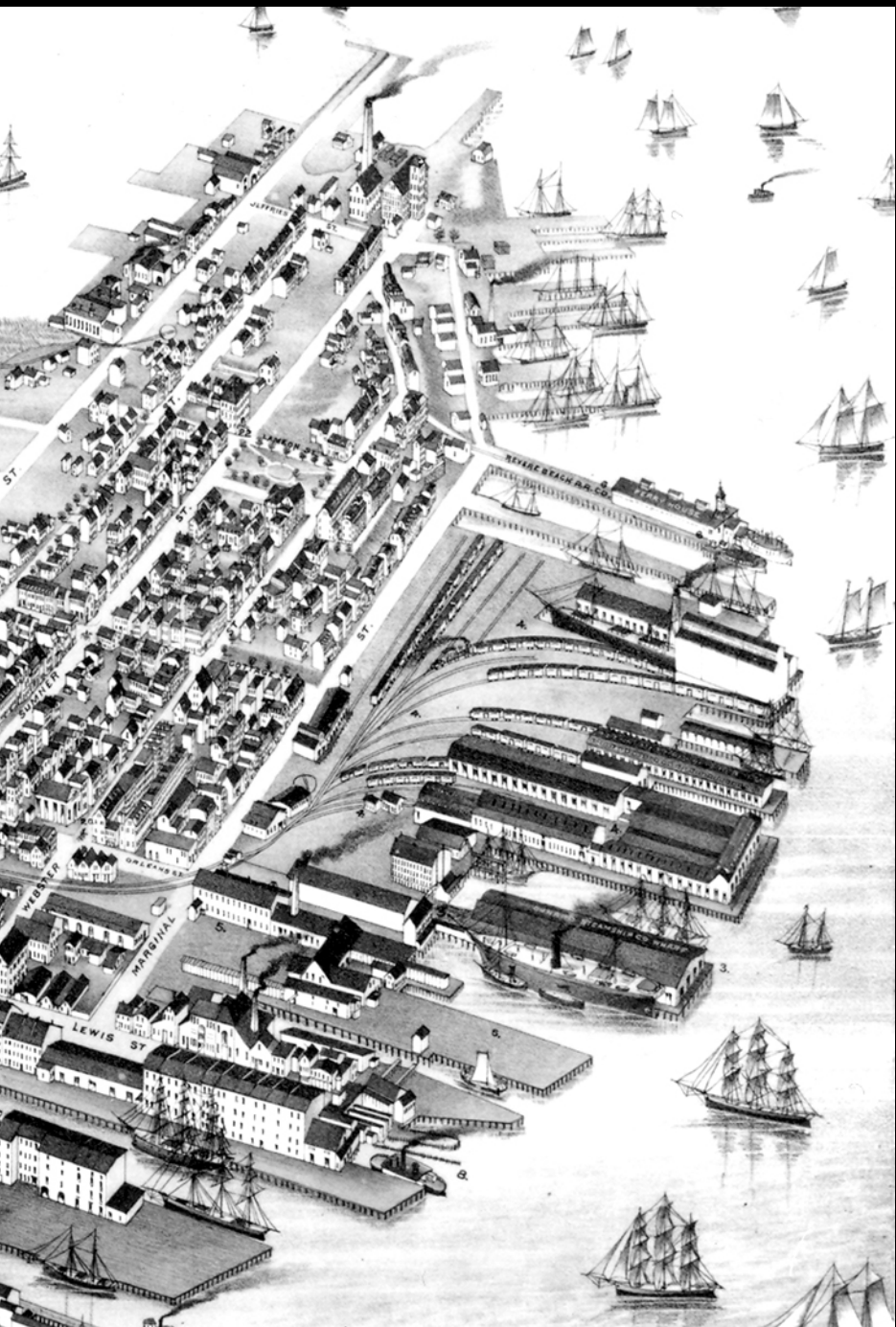
















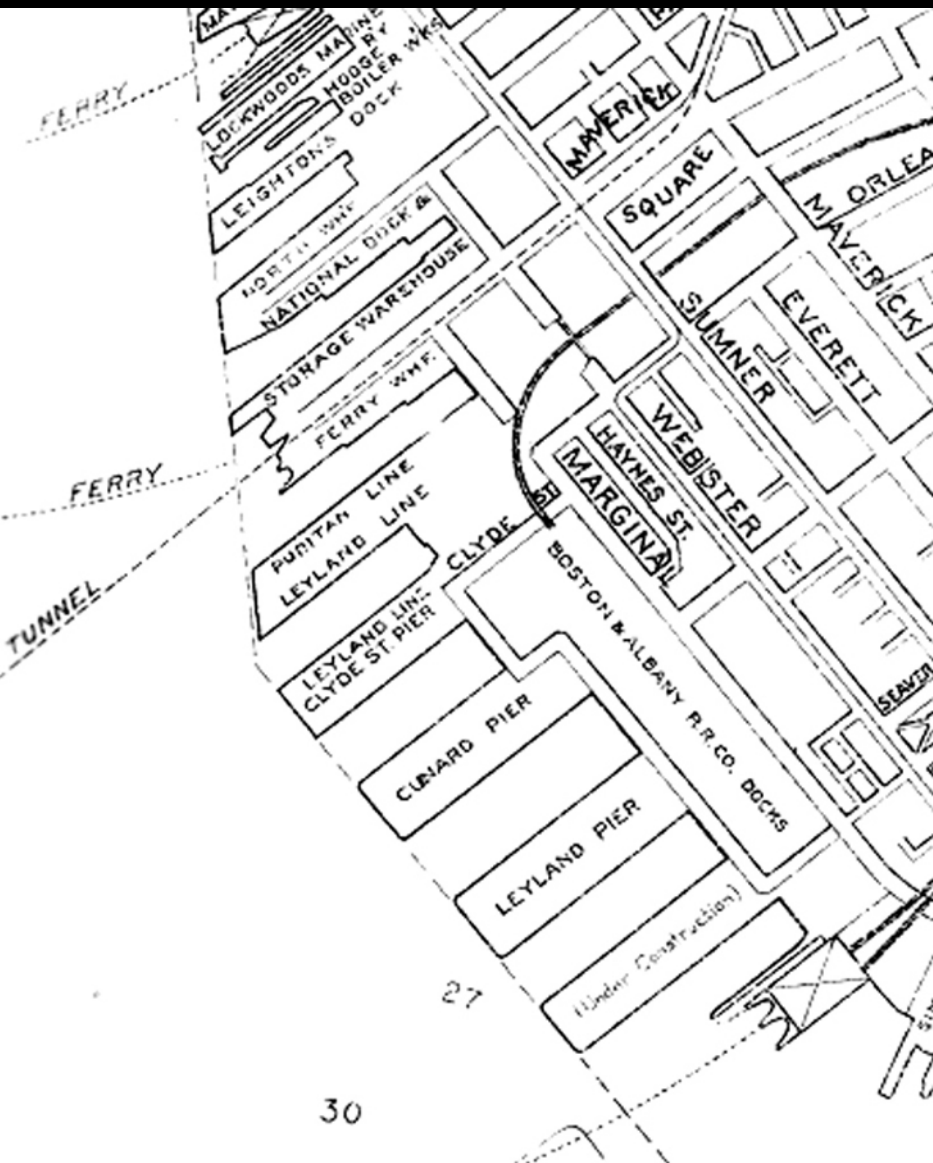
LEWIS FERRY LANDING

PROUDLY DEDICATED TO THE SENIOR CITIZENS OF EAST BOSTON WHO THROUGH THEIR HARD WORK AND DEDICATION TO THE COMMUNITY, HAVE ENSURED A LEGACY OF PRIDE IN EAST BOSTON THAT WILL CONTINUE FOR MANY YEARS TO COME.

THOMAS M. MENINO
MAYOR OF BOSTON
SEPTEMBER 9, 1995

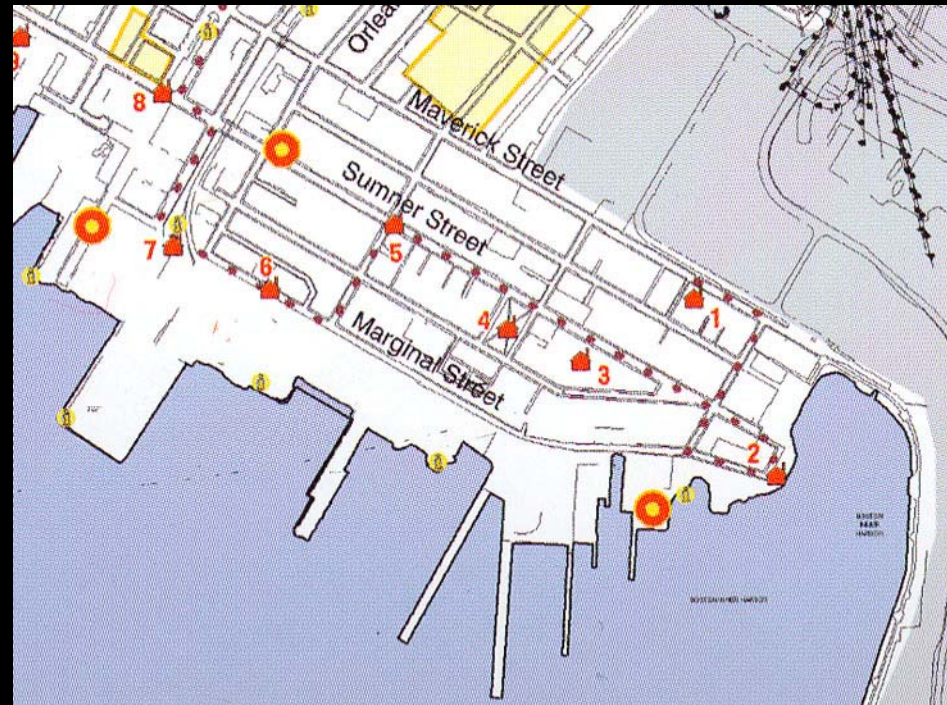
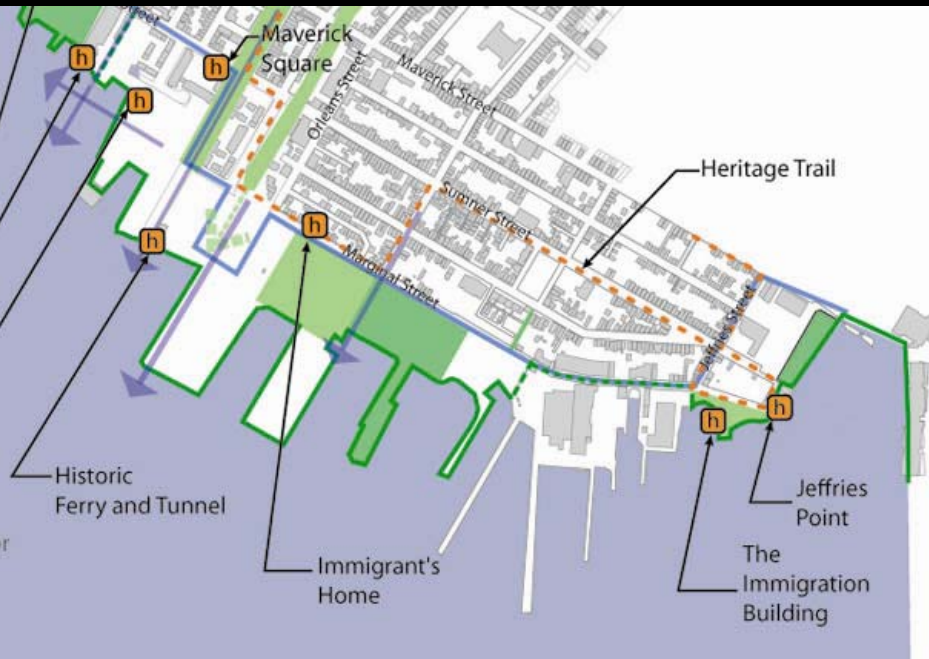
14
Saltafia











I. Shipping (freight and passenger)

Grand Junction RR Wharves
Cunard Wharf

II. Shipbuilding and related industries

? Massport shipyard
Piers Park McKay pavilion and painting
McKay bust in Bremen St. Park

III. Railroads

BRB&L tunnel
Grand Junction RR
Eastern RR/Boston & Albany RR (Greenway) - caboose plaque

IV. Ferries and tunnels

BRB&L ferry
South Ferry
Blue Line tunnel

V. Immigration

Immigration Building
Golden Stairs
Immigrants House
Piers park panels
?Cunard Wharf

VI. East Boston History

Piers Park medallion

Proposed interpretive material at Lewis Gateway to put the above into context, i.e., Noddles Island before 1833, the East Boston Co., and subsequent development

Sites not included in above themes

Jeffries Point Yacht Club