







IMAGE PREPARED BY O'SULLIVAN ARCHITECTS, INC.





snconsulting group  
Design & Development Services



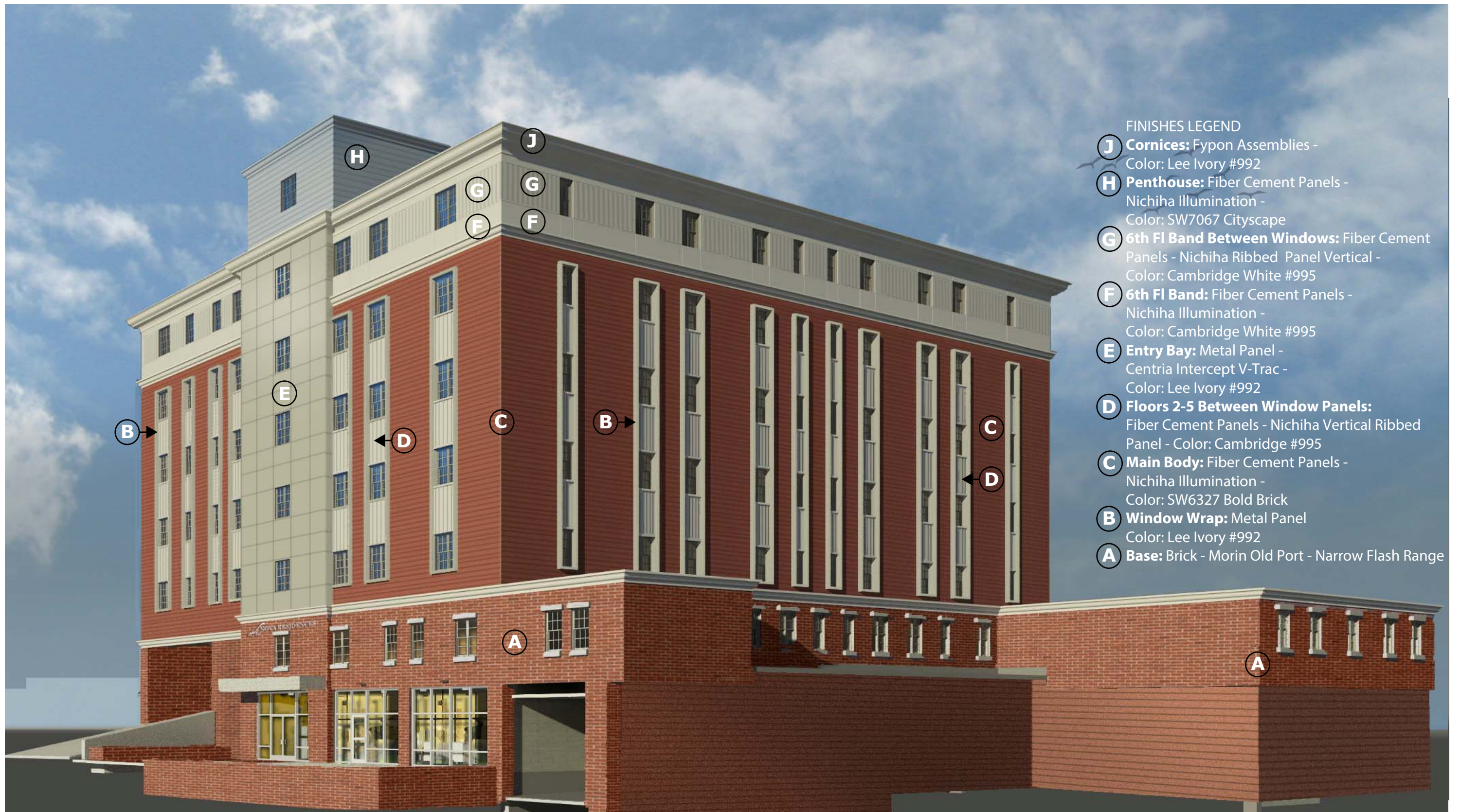
Proposed Exterior  
Option Two-A-8

Nova Residences  
1505 Commonwealth Avenue  
Brighton, Massachusetts

Date: 02-01-16

Scale: NTS





FINISHES LEGEND

- J** **Cornices:** Fypon Assemblies -  
Color: Lee Ivory #992
- H** **Penthouse:** Fiber Cement Panels -  
Nichiha Illumination -  
Color: SW7067 Cityscape
- G** **6th Fl Band Between Windows:** Fiber Cement  
Panels - Nichiha Ribbed Panel Vertical -  
Color: Cambridge White #995
- F** **6th Fl Band:** Fiber Cement Panels -  
Nichiha Illumination -  
Color: Cambridge White #995
- E** **Entry Bay:** Metal Panel -  
Centria Intercept V-Trac -  
Color: Lee Ivory #992
- D** **Floors 2-5 Between Window Panels:**  
Fiber Cement Panels - Nichiha Vertical Ribbed  
Panel - Color: Cambridge #995
- C** **Main Body:** Fiber Cement Panels -  
Nichiha Illumination -  
Color: SW6327 Bold Brick
- B** **Window Wrap:** Metal Panel  
Color: Lee Ivory #992
- A** **Base:** Brick - Morin Old Port - Narrow Flash Range