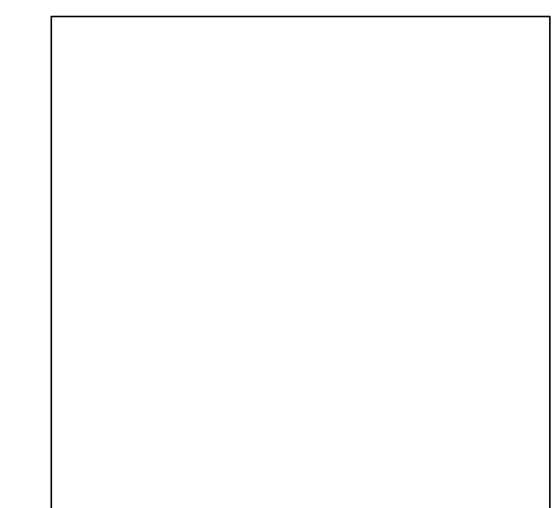


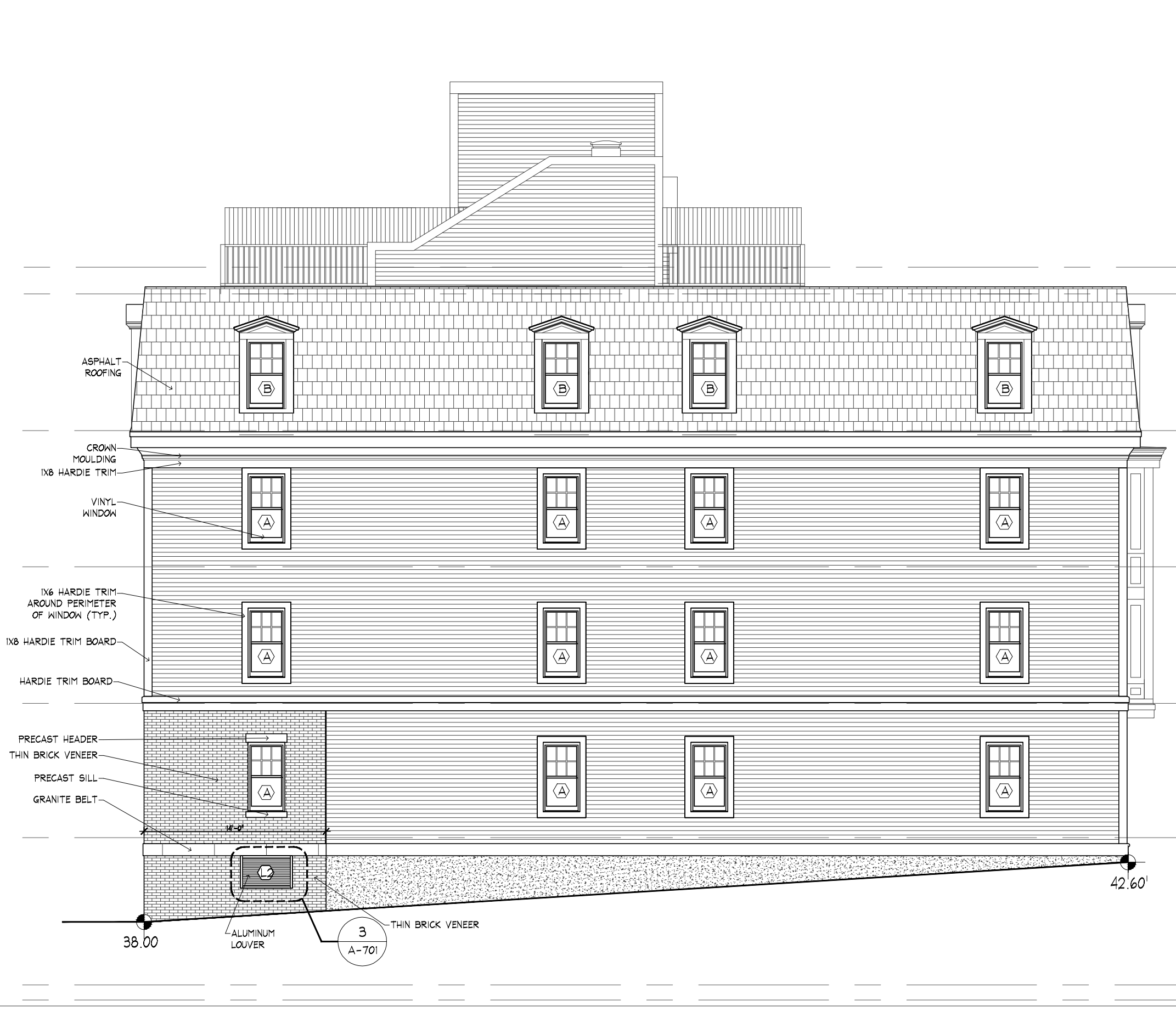


30 POLK STREET

30
POLK STREET
CHARLESTOWN
MASS.



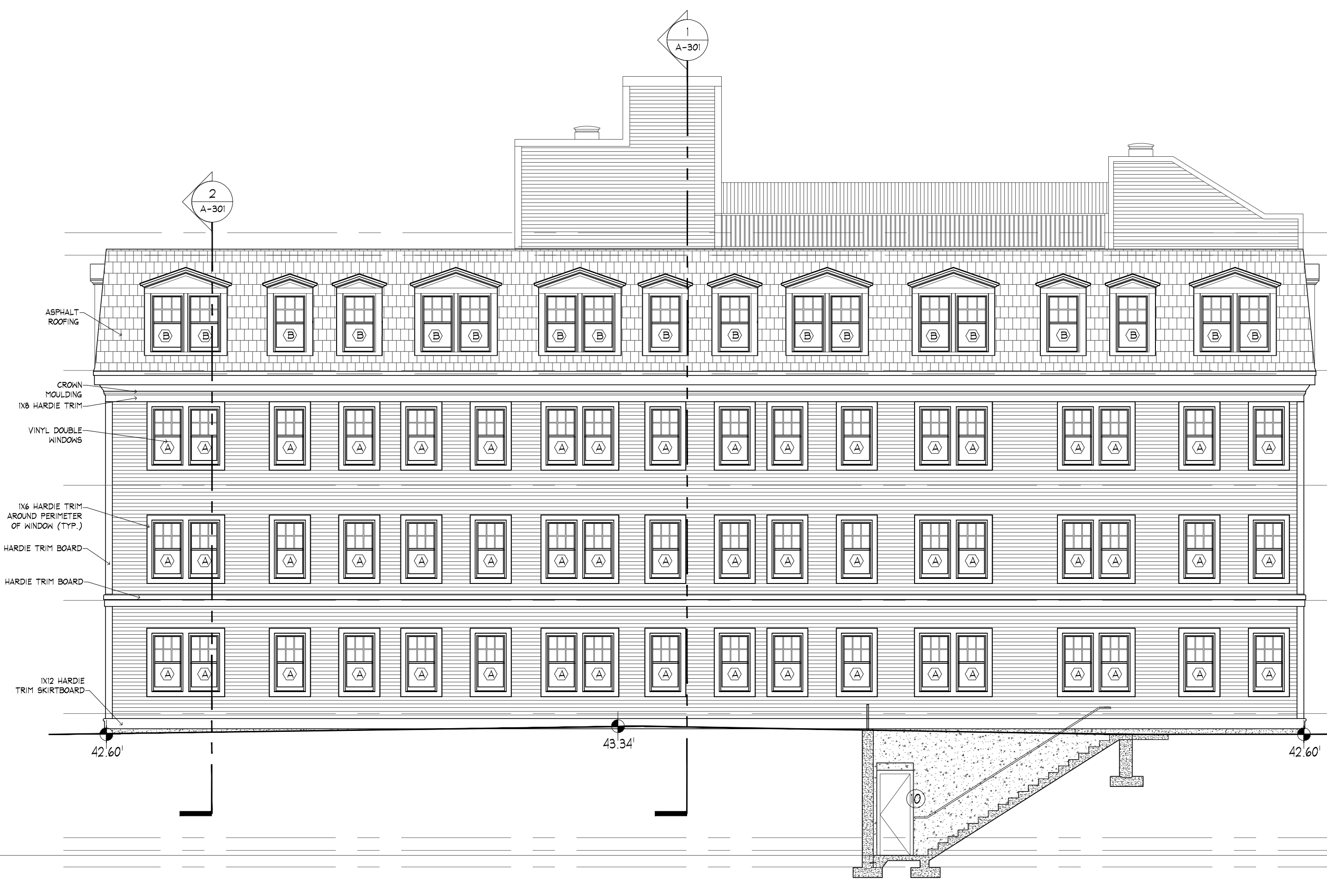
Neshamkin French Architects, Inc.
ARCHITECTS - PRESERVATION PLANNERS/DEVELOPMENT CONSULTANTS
5 Monument Square Tel: 617-241-7432
Charlestown, MA 02155 Fax: 617-241-7434



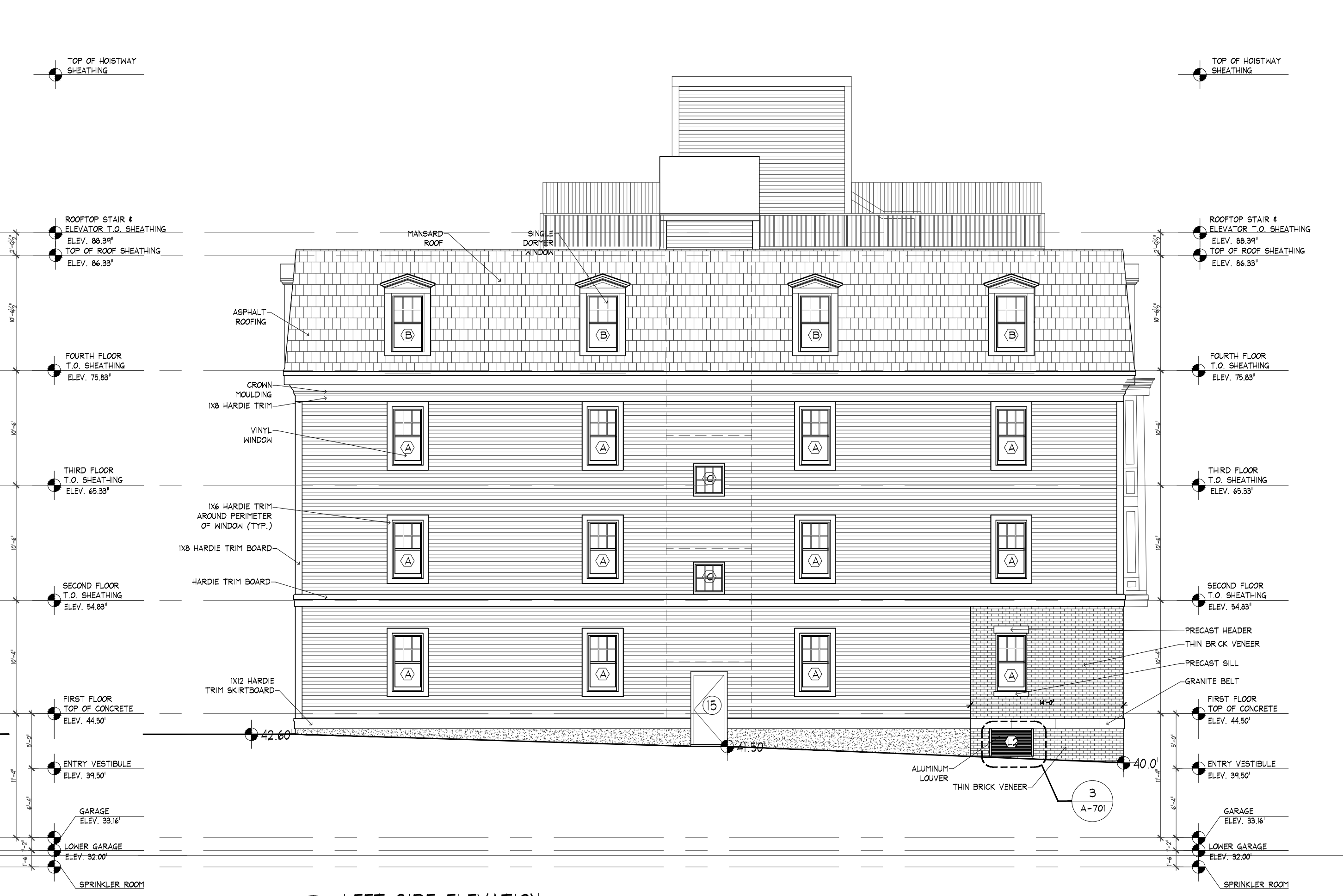
4 RIGHT SIDE ELEVATION
SCALE: 1/8" = 1'-0"



1 ELEVATION FACING POLK STREET
SCALE: 1/8" = 1'-0"



3 REAR ELEVATION
SCALE: 1/8" = 1'-0"



2 LEFT SIDE ELEVATION
SCALE: 1/8" = 1'-0"

Stamped By:
Drawn By: JC & SV
Checked By: JF & AF
Date: 11/1/2016

Revisions

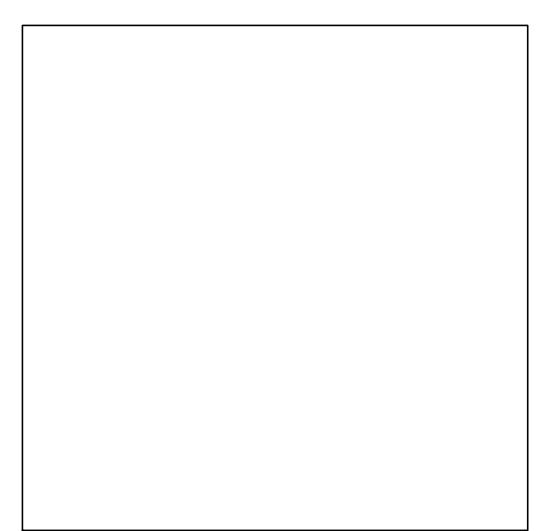
NO.	DESCRIPTION	DATE
1	PRICING SET	11/1/16
2	CONSTRUCTION DOCUMENTS	11/23/16

Project No. NFA #1219
File Name:
Drawing Title:
EXTERIOR ELEVATIONS

Sheet No. A-401
Scale: 1/8" = 1'-0"

30 POLK STREET

CHARLESTOWN MASS.

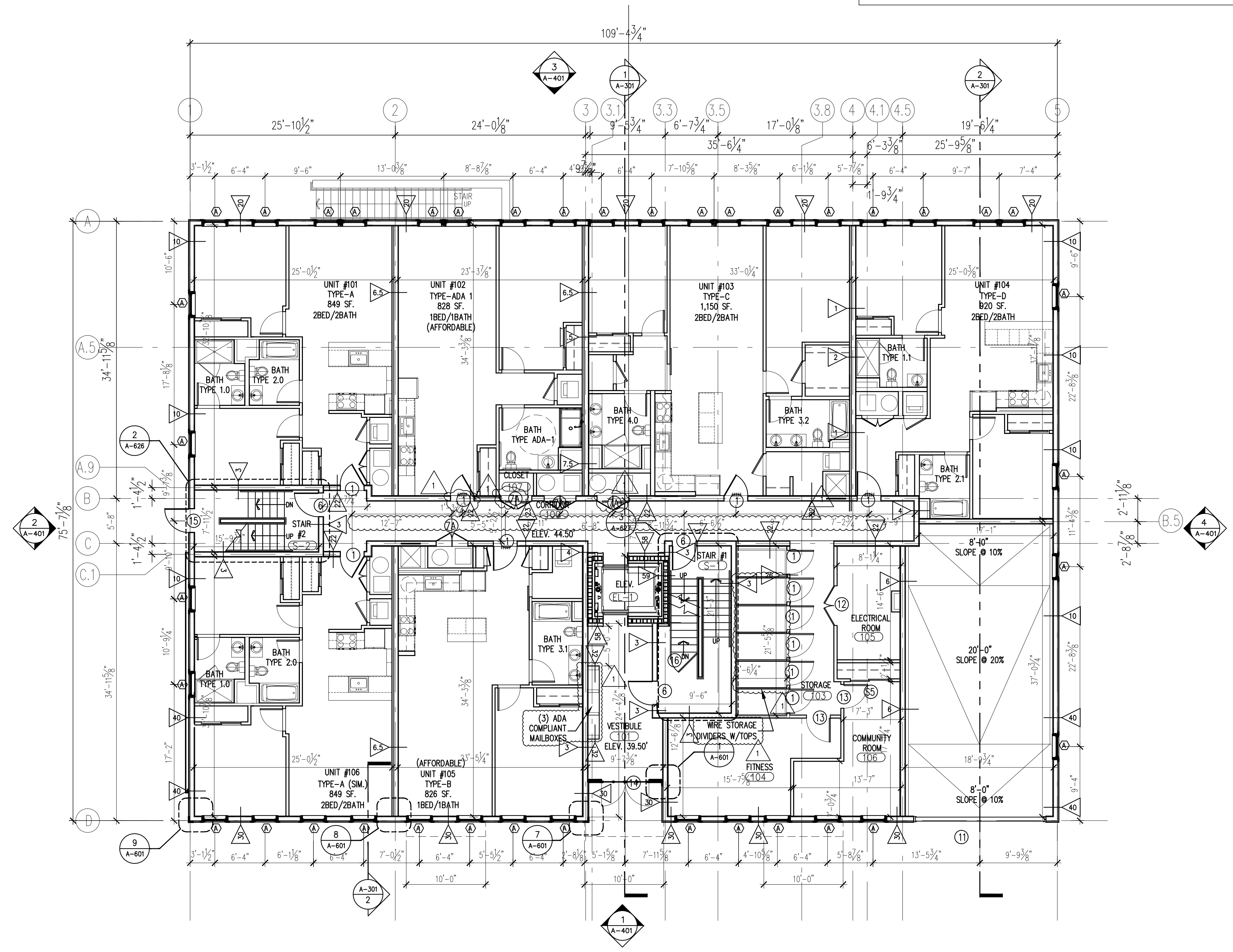


Neshamkin French Architects, Inc.
 ARCHITECTS - PRESERVATION PLANNERS/DEVELOPMENT CONSULTANTS
 5 Monument Square Charlestown, MA 02129 195.602.2412 FAX 617.243.2424

NOTE:
 GENERAL CONTRACTOR IS RESPONSIBLE TO COORDINATE AND:
 1. PROVIDE BLOCKING OR STRAPPING IN PARTITIONS AS REQUIRED BY THE SPEC. AT ALL LOCATIONS INCLUDING, BUT NOT LIMITED TO, CABINETS, SHELVING, COUNTERS, FIXTURES, SHOWER RODS, DOOR TREATMENT, BASE MOULDINGS, CHAIR RAILS, ACCOMMODATIONS FOR ACCESSIBILITY, BATHROOM ACCESSORIES, CLOSET POLES, DOORS, AND MISCELLANEOUS HARDWARE. BLOCKING AT ALL UNITS FOR GROUP I. MAAB ADAPTABILITY STANDARDS.
 2. PROVIDE (2) TOWEL BARS, (1) TOILET PAPER HOLDER, (1) SHOWER ROD, (1) SURFACE MOUNTED MEDICINE CABINET, (1) ROBE HOOK, (1) TOOTHBRUSH HOLDER, (1) SOAP DISH, AND (1) WALL-MOUNTED MIRROR AT ALL BATHROOMS.

NOTE:
 1. ALL DIM LINE IS FROM FACE OF STUD TO FACE OF STUD U.N.O.
 2. G.W.B. @ ALL BATHROOMS MUST BE MOISTURE RESISTANT
 3. FOR ENLARGED BATHROOMS SEE A-801; A-802
 4. FOR ENLARGED KITCHENS SEE A-803
 5. ALL DOORS ARE 4" FROM WALL U.N.O.
 6. WHEREVER SHAFT WALLS ARE LOCATED WITHIN CLOSETS; DO NOT ATTACH CLOSET ROD TO SHAFT WALL. PROVIDE INDEPENDENT SUPPORT.

FOR ENLARGED UNIT PLAN
 SEE A-150 & A-151



1 FIRST FLOOR PLAN
 SCALE: 1/8" = 1'-0"

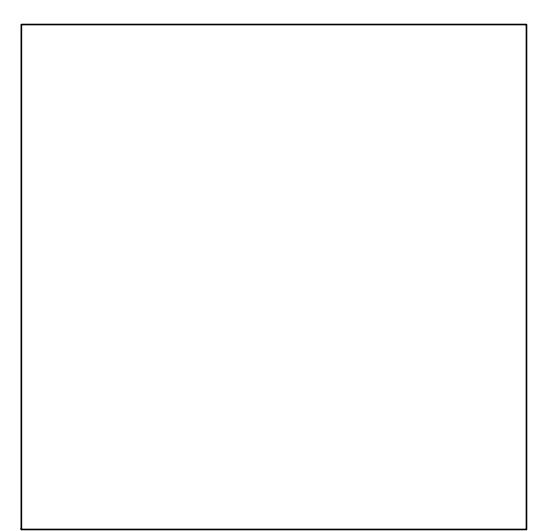
Stamped By: _____
 Drawn By: JC & SV
 Checked By: JF & AF
 Date: 11/1/2016

Revisions

NO.	DESCRIPTION	DATE
1	PRICING SET	11/1/16
1	REVISION 1	11/23/16
	CONSTRUCTION DOCUMENTS	11/23/16

Project No. NFA #1219
 File Name: _____
 Drawing Title:
FIRST FLOOR PLAN

Sheet No. **A-101**
 Scale: 1/8" = 1'-0"

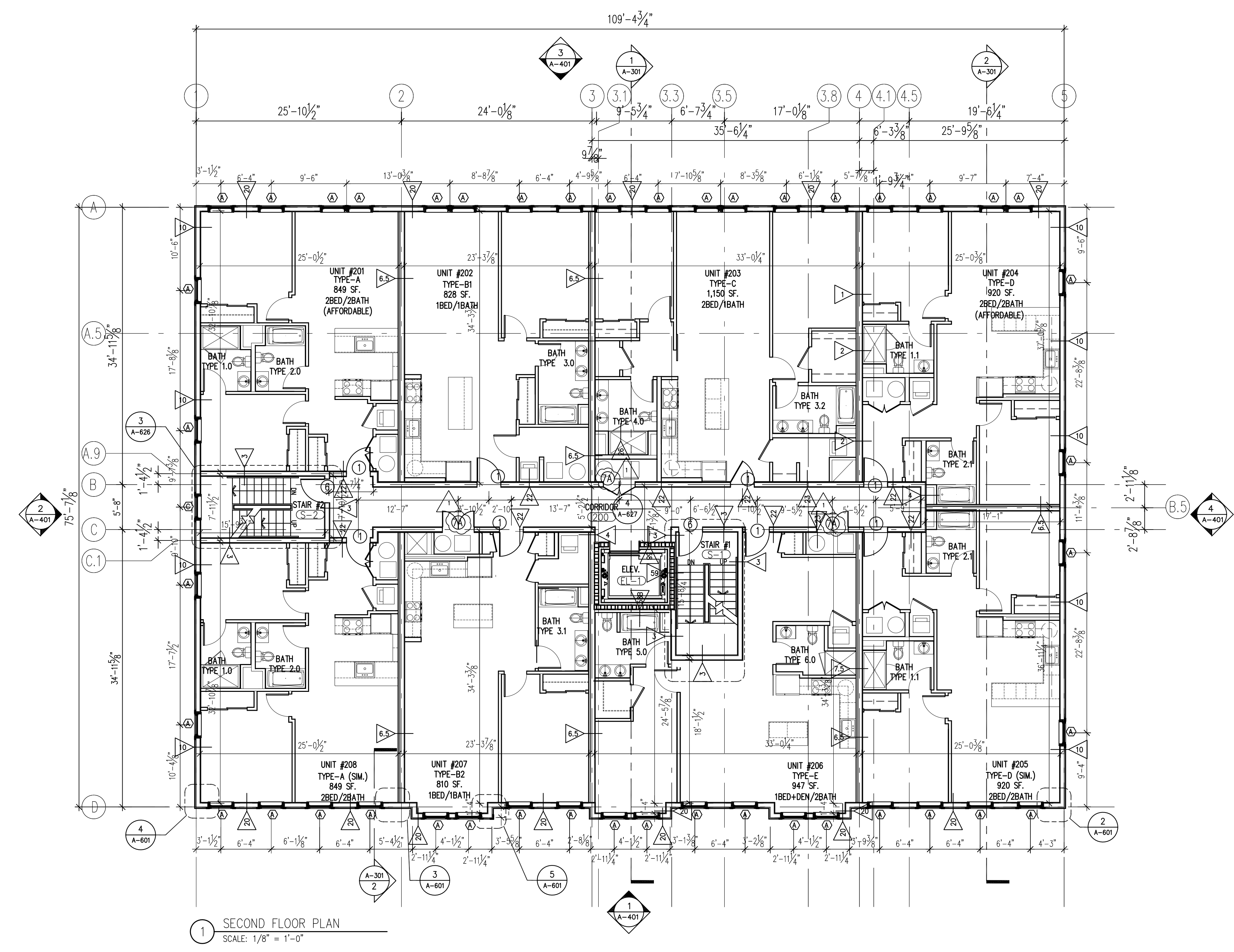


Neshamkin French Architects, Inc.
ARCHITECTS PRESERVATION PLANNING/DEVELOPMENT CONSULTANTS
5 Monument Square, Charlestown, MA 02129
Tel: 617-243-7400 Fax: 617-243-7404

NOTE:
GENERAL CONTRACTOR IS RESPONSIBLE TO COORDINATE AND PROVIDE BLOCKING OR STRAPPING IN PARTITIONS AS REQUIRED BY THE SPEC. AT ALL LOCATIONS INCLUDING, BUT NOT LIMITED TO, CABINETS, SHELVING, COUNTERS, FIXTURES, SHOWER RODS, DOOR TREATMENT, BASE MOULDINGS, CHAIR RAILS, ACCOMMODATIONS FOR ACCESSIBILITY, BATHROOM ACCESSORIES, CLOSET POLES, DOORS, AND MISCELLANEOUS HARDWARE. BLOCKING AT ALL UNITS FOR GROUP I. MAAB ADAPTABILITY STANDARDS.

NOTE:
1. ALL DIM LINE IS FROM FACE OF STUD TO FACE OF STUD U.N.O.
2. GWB @ ALL BATHROOMS MUST BE MOISTURE RESISTANT
3. FOR ENLARGED BATHROOMS SEE A-801; A-802
4. FOR ENLARGED KITCHENS SEE A-803
5. ALL DOORS ARE 4" FROM WALL U.N.O.
FOR COMMON DOOR #s & COMMON WALL TYPES
6. WHEREVER SHAFT WALLS ARE LOCATED WITHIN CLOSETS; DO NOT ATTACH CLOSET ROD TO SHAFT WALL. PROVIDE INDEPENDENT SUPPORT.

FOR ENLARGED UNIT PLAN
SEE A-150 & A-151



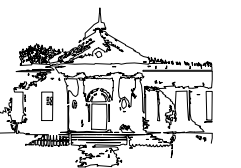
Stamped By: _____
Drawn By: JC & SV
Checked By: JF & AF
Date: 11/1/2016

Revisions	
PRICING SET	11/1/16
1 REVISION 1	11/23/16
CONSTRUCTION DOCUMENTS	11/23/16

Project No. NFA #1219
File Name: _____
Drawing Title: _____

SECOND FLOOR PLAN

30
POLK STREET
CHARLESTOWN
MASS.

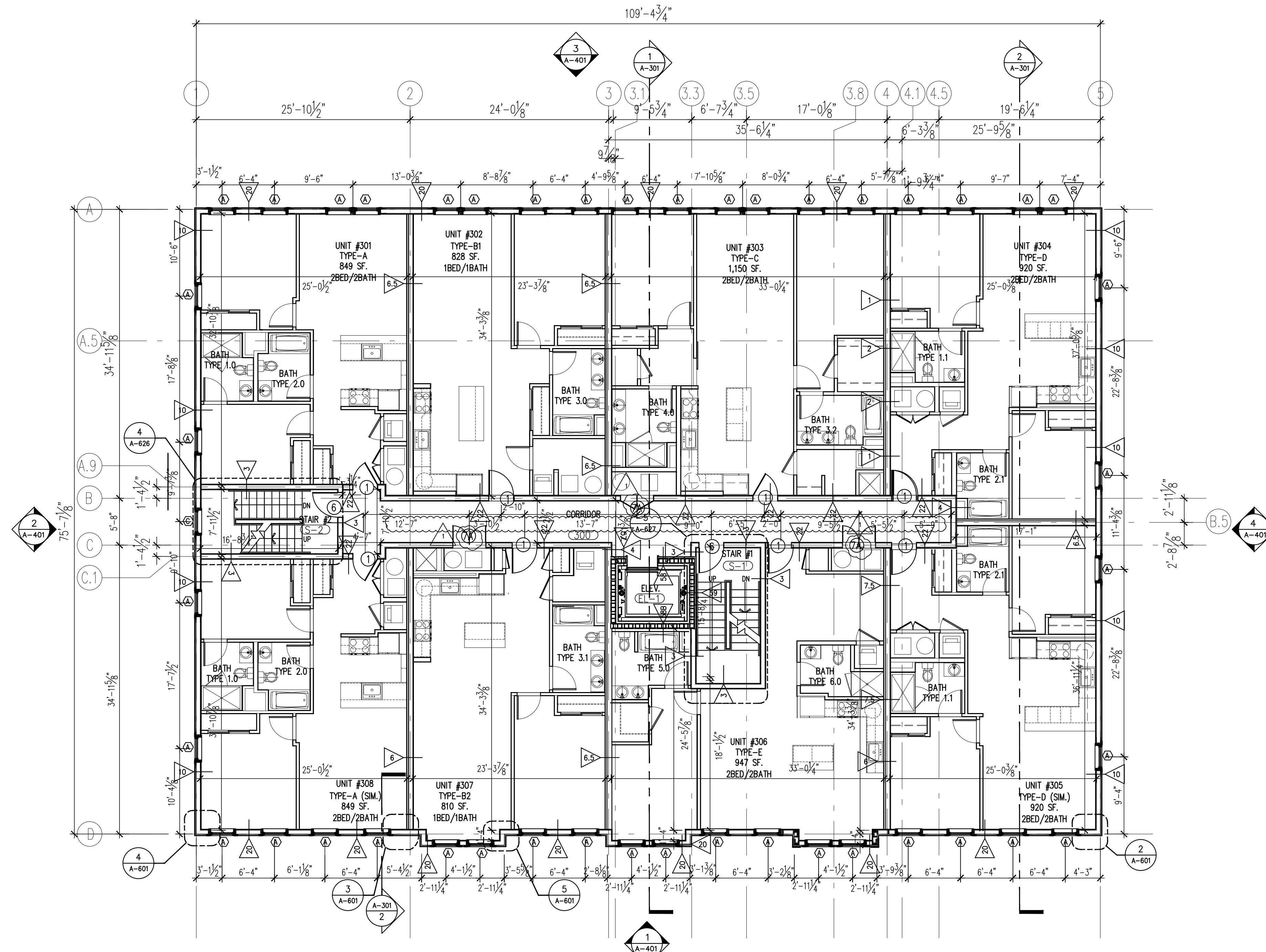


Neshamkin French Architects, Inc.
ARCHITECTS - PRESERVATION PLANNERS/DEVELOPMENT CONSULTANTS
5 Monument Square, Charlestown, MA 02129

FOR ENLARGED UNIT PLAN
SEE A-150 & A-151

NOTE:
GENERAL CONTRACTOR IS RESPONSIBLE TO COORDINATE AND:
1. PROVIDE BLOCKING OR STRAPPING IN PARTITIONS AS REQUIRED BY THE SPEC. AT ALL LOCATIONS INCLUDING, BUT NOT LIMITED TO, CABINETS, SHELVING, COUNTERS, FIXTURES, SHOWER RODS, DOOR TREATMENT, BASE MOULDINGS, CHAIR RAILS, ACCOMMODATIONS FOR ACCESSIBILITY, BATHROOM ACCESSORIES, CLOSET POLES, DOORS, AND MISCELLANEOUS HARDWARE. BLOCKING AT ALL UNITS FOR GROUP I. MAAB ADAPTABILITY STANDARDS.
2. PROVIDE (2) TOWEL BARS, (1) TOILET PAPER HOLDER, (1) SHOWER ROD, (1) SURFACE MOUNTED MEDICINE CABINET, (1) ROBE HOOK, (1) TOOTHBRUSH HOLDER, (1) SOAP DISH, AND (1) WALL-MOUNTED MIRROR AT ALL BATHROOMS.

NOTE:
1. ALL DIM LINE IS FROM FACE OF STUD TO FACE OF STUD U.N.O.
2. GWB @ ALL BATHROOMS MUST BE MOISTURE RESISTANT
3. FOR ENLARGED BATHROOMS SEE A-801; A-802
4. FOR ENLARGED KITCHENS SEE A-803
5. ALL DOORS ARE 4" FROM WALL U.N.O.
FOR COMMON DOOR #s & COMMON WALL TYPES
6. WHEREVER SHAFT WALLS ARE LOCATED WITHIN CLOSETS; DO NOT ATTACH CLOSET ROD TO SHAFT WALL. PROVIDE INDEPENDENT SUPPORT.



1 THIRD FLOOR PLAN
SCALE: 1/8" = 1'-0"

Stamped By:
Drawn By: JC & SV
Checked By: JF & AF
Date: 11/1/2016

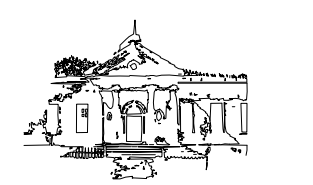
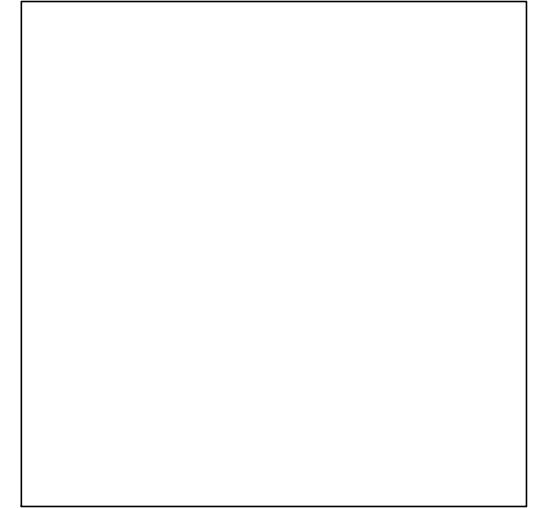
Revisions

NO.	DESCRIPTION	DATE
1	PRICING SET	11/1/16
1	REVISION 1	11/23/16
	CONSTRUCTION DOCUMENTS	11/23/16

Project No. NFA #1219
File Name:
Drawing Title:

THIRD FLOOR PLAN

Sheet No. A-103
Scale: 1/8" = 1'-0"

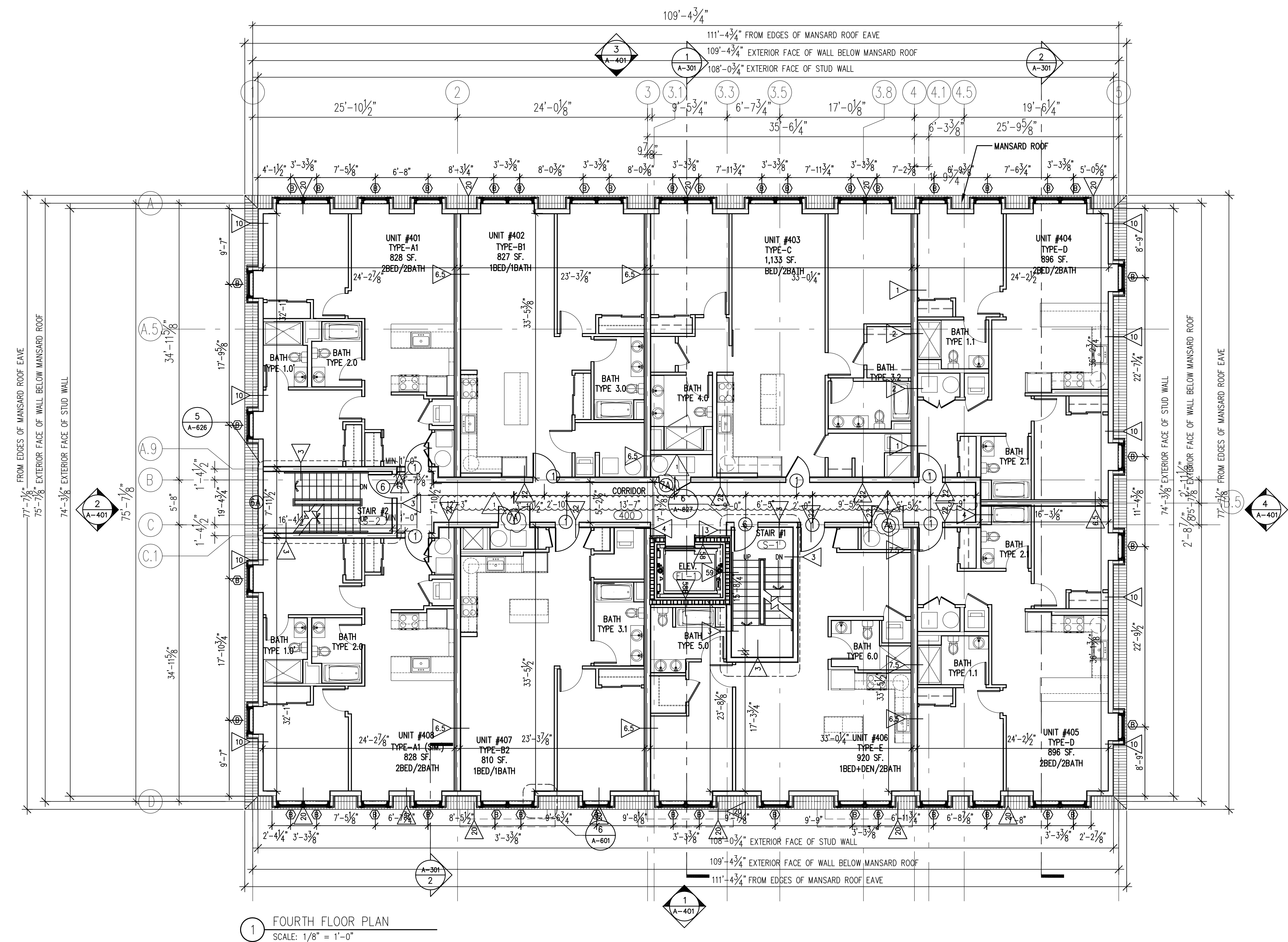


Neshamkin French Architects, Inc.
ARCHITECTS - PRESERVATION PLANNERS/DEVELOPMENT CONSULTANTS
5 Monument Square, Charlestown, MA 02129 TEL: 617-243-7400 FAX: 617-243-7404

FOR ENLARGED UNIT PLAN
SEE A-150 & A-151

NOTE:
GENERAL CONTRACTOR IS RESPONSIBLE TO COORDINATE AND:
1. PROVIDE BLOCKING OR STRAPPING IN PARTITIONS AS REQUIRED BY THE SPEC. AT ALL LOCATIONS INCLUDING, BUT NOT LIMITED TO, CABINETS, SHELVING, COUNTERS, FIXTURES, SHOWER RODS, DOOR TREATMENT, BASE MOULDINGS, CHAIR RAILS, ACCOMMODATIONS FOR ACCESSIBILITY, BATHROOM ACCESSORIES, CLOSET POLES, DOORS, AND MISCELLANEOUS HARDWARE. BLOCKING AT ALL UNITS FOR GROUP I. MAAB ADAPTABILITY STANDARDS.
2. PROVIDE (2) TOWEL BARS, (1) TOILET PAPER HOLDER, (1) SHOWER ROD, (1) SURFACE MOUNTED MEDICINE CABINET, (1) ROBE HOOK, (1) TOOTHBRUSH HOLDER, (1) SOAP DISH, AND (1) WALL-MOUNTED MIRROR AT ALL BATHROOMS.

NOTE:
1. ALL DIM LINE IS FROM FACE OF STUD TO FACE OF STUD U.N.O.
2. G.W.B. @ ALL BATHROOMS MUST BE MOISTURE RESISTANT
3. FOR ENLARGED BATHROOMS SEE A-801; A-802
4. FOR ENLARGED KITCHENS SEE A-803
5. ALL DOORS ARE 4" FROM WALL U.N.O.
FOR COMMON DOOR #s & COMMON WALL TYPES
6. WHEREVER SHAFT WALLS ARE LOCATED WITHIN CLOSETS; DO NOT ATTACH CLOSET ROD TO SHAFT WALL. PROVIDE INDEPENDENT SUPPORT.



Stamped By:
Drawn By: JC & SV
Checked By: JF & AF
Date: 11/1/2016

Revisions	
PRICING SET	11/1/16
1 REVISION 1	11/23/16
CONSTRUCTION DOCUMENTS	11/23/16

Project No. NFA #1219
File Name:
Drawing Title:

FOURTH FLOOR PLAN