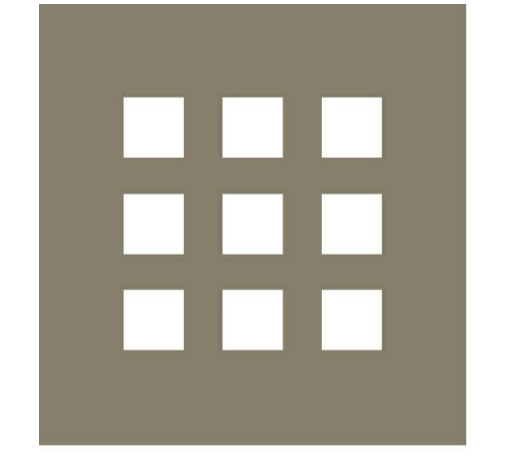






If this sheet is less than 22"x34" in size, it has been reduced.
Graphic scales must be adjusted accordingly.



DHK
ARCHITECTS

54 Canal Street (2nd Floor)
Boston, MA 02114
617-267-6408

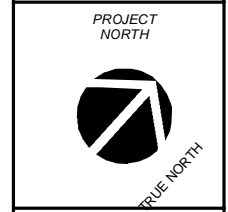
Prepared for:
CODMAN SQUARE NDC

Project:
**FOUR CORNERS PLAZA
DORCHESTER, MA.**

**CONSTRUCTION
DOCUMENTS
(95% PROGRESS SET)**

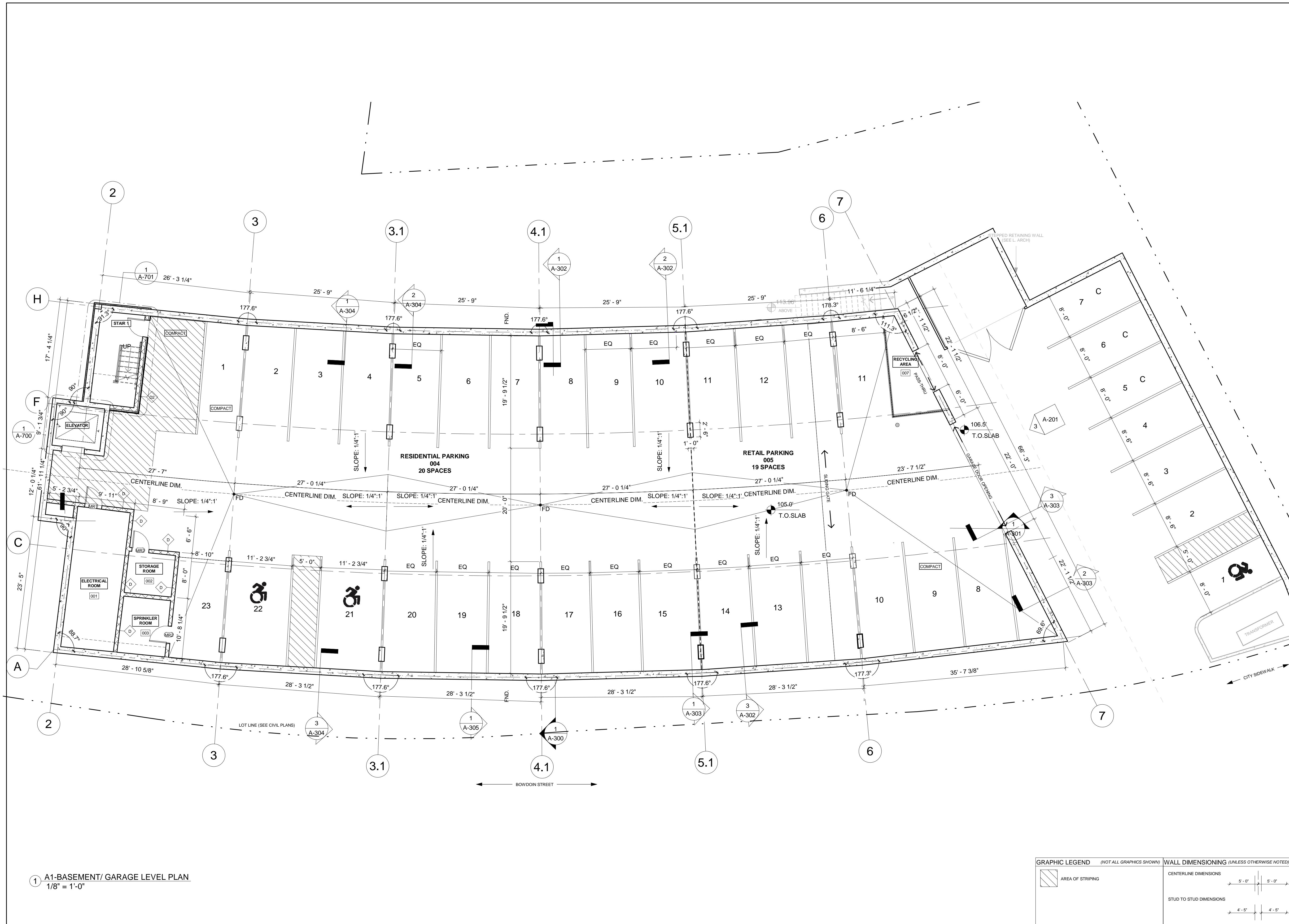
Title
**BASEMENT/ GARAGE
LEVEL PLAN**

Scale
1/8" = 1'-0"



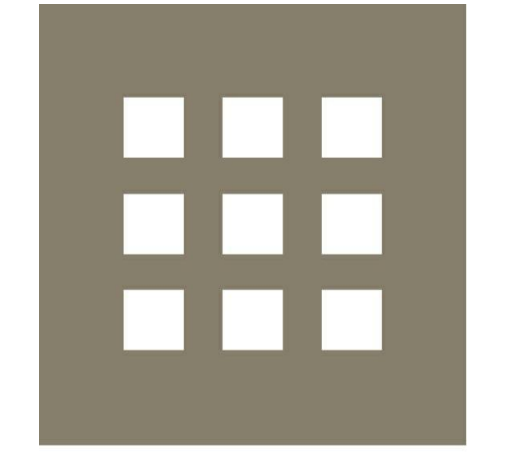
File Name
A-100
Drawn By
RH
Checked By
AC
Job No.
3410
Date
08/15/2019

Drawing No.
A-100



1 A1-BASEMENT/ GARAGE LEVEL PLAN
1/8" = 1'-0"

GRAPHIC LEGEND (NOT ALL GRAPHICS SHOWN)		WALL DIMENSIONING (UNLESS OTHERWISE NOTED)	
	AREA OF STRIPING	CENTERLINE DIMENSIONS	
		STUD TO STUD DIMENSIONS	



DHK
ARCHITECTS

54 Canal Street (2nd Floor)
Boston, MA 02114
617-267-6408

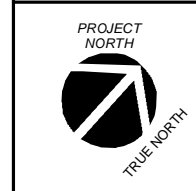
Prepared for:
CODMAN SQUARE NDC

Project:
**FOUR CORNERS PLAZA
DORCHESTER, MA.**

**CONSTRUCTION
DOCUMENTS
(95% PROGRESS SET)**

Title
**FIRST FLOOR/RETAIL
LEVEL PLAN**

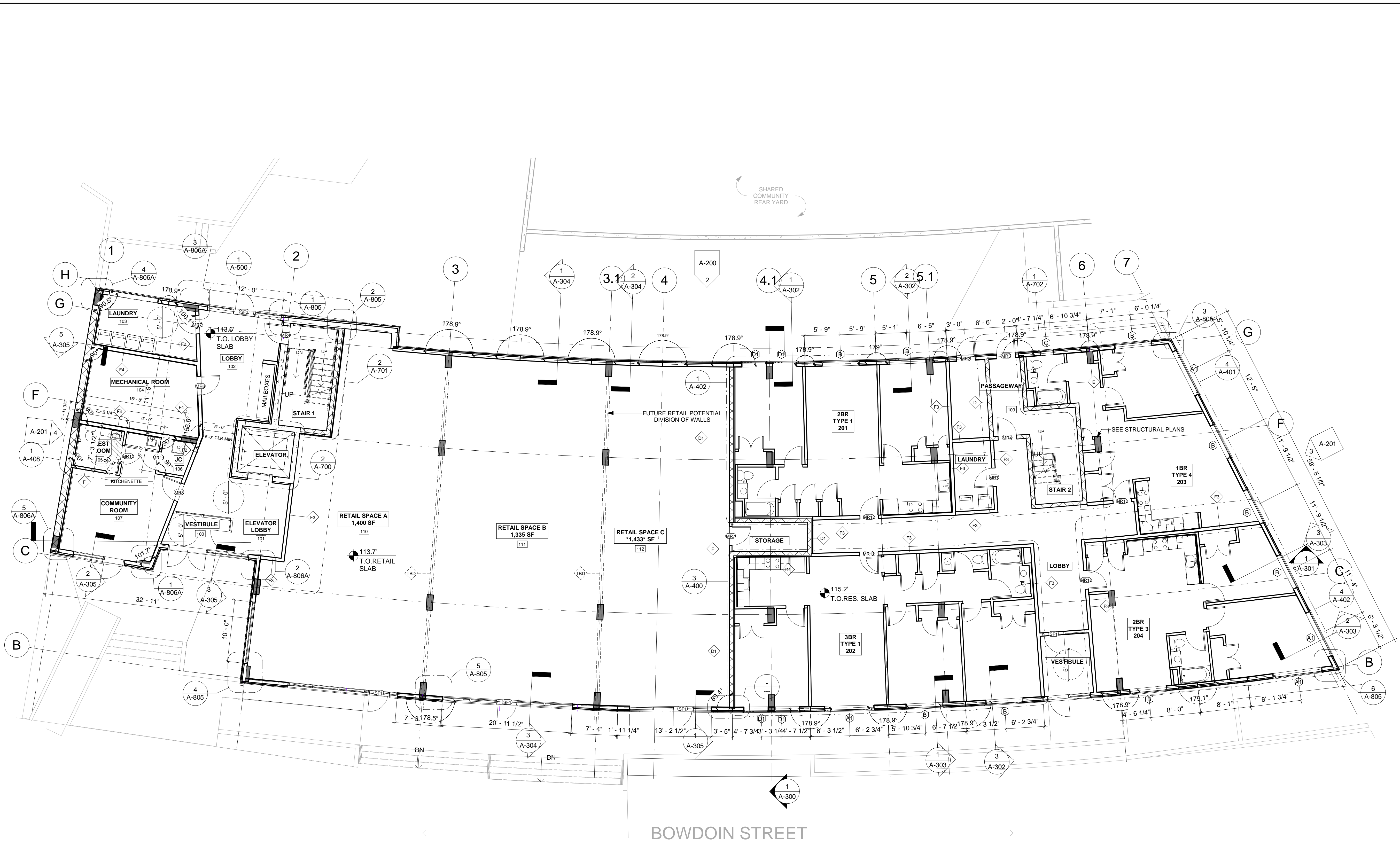
Scale
1/8" = 1'-0"



File Name
A-101
Drawn By
RH

Checked By
AC
Job No.
3410
Date
08/15/2019

Drawing No.
A-101



① A2-FIRST FLOOR/ RETAIL LEVEL PLAN
1/8" = 1'-0"

WALL DIMENSIONING (UNLESS OTHERWISE NOTED)

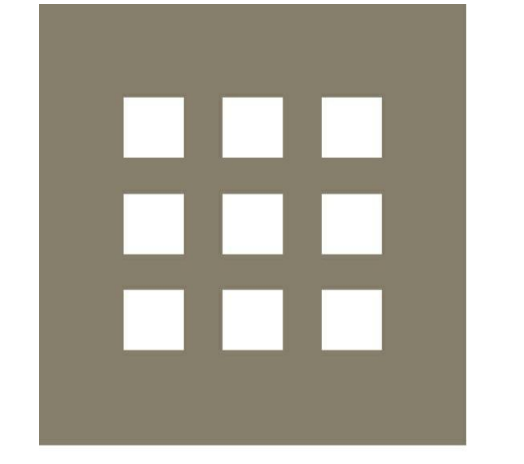
CENTERLINE DIMENSIONS	
STUD TO STUD DIMENSIONS	



① COLORED SOUTH EXTERIOR ELEVATION
1/8" = 1'-0"



② COLORED NORTH EXTERIOR ELEVATION
1/8" = 1'-0"



DHK
ARCHITECTS

54 Canal Street (2nd Floor)
Boston, MA 02114
617-267-6408

Prepared for:
CODMAN SQUARE NDC

No.	Date	Revision

Project:
FOUR CORNERS PLAZA
DORCHESTER, MA.

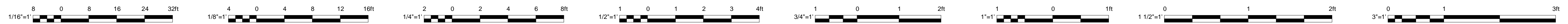
CONSTRUCTION
DOCUMENTS
(95% PROGRESS SET)

Title
COLORED EXTERIOR
ELEVATIONS (SOUTH &
NORTH)

Scale
1/8" = 1'-0"

File Name
A-200.1
Drawn By
Author
Checked By
Approver
Job No.
3410
Date
08/15/2019

Drawing No.
A-200.1

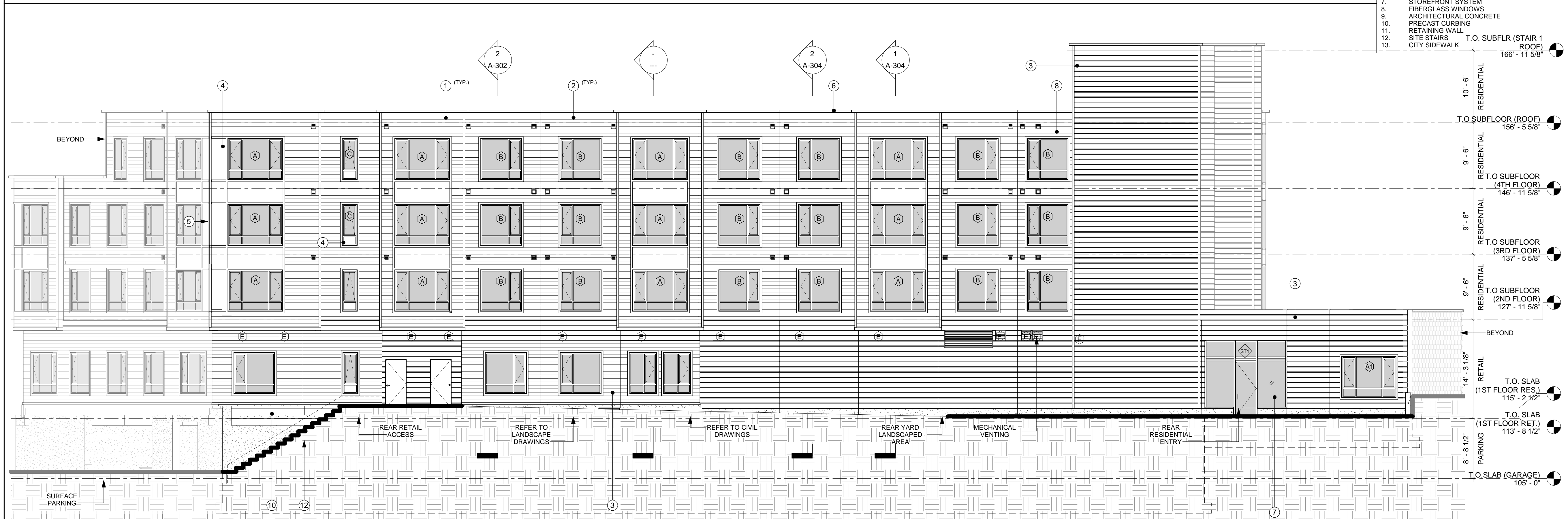


If this sheet is less than 22"x34" in size, it has been reduced.
Graphic scales must be adjusted accordingly.

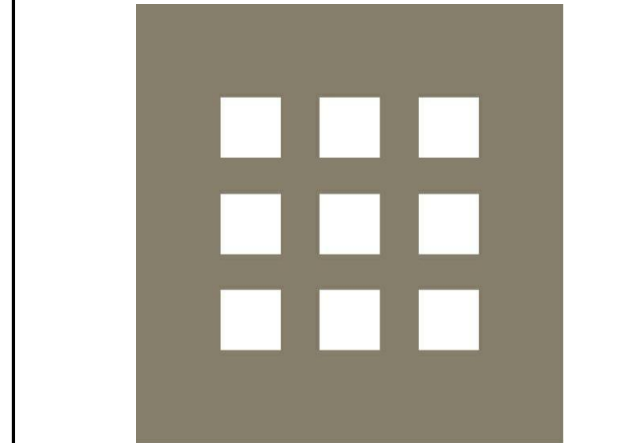


3 SOUTH EXTERIOR ELEVATION
1/8" = 1'-0"

- EXTERIOR ELEVATION NOTES**
1. FIBER CEMENT 6" CLAPBOARDS (TYPE 1)
 2. FIBER CEMENT 6" CLAPBOARDS (TYPE 2)
 3. FIBER CEMENT HORIZONTAL REVEAL SIDING (9")
 4. FIBER CEMENT PANELING
 5. CORNERBOARDS
 6. CORNICE
 7. STOREFRONT SYSTEM
 8. FIBERGLASS WINDOWS
 9. ARCHITECTURAL CONCRETE
 10. PRECAST CURBING
 11. RETAINING WALL
 12. SITE STAIRS
 13. CITY SIDEWALK



2 NORTH EXTERIOR ELEVATION
1/8" = 1'-0"



DHK
ARCHITECTS

54 Canal Street (2nd Floor)
Boston, MA 02114
617-267-6408

Prepared for:
CODMAN SQUARE NDC

Project:
FOUR CORNERS PLAZA
DORCHESTER, MA.

CONSTRUCTION
DOCUMENTS
(95% PROGRESS SET)

Title
EXTERIOR ELEVATIONS
(SOUTH & NORTH)

Scale
1/8" = 1'-0"

File Name
A-200
Drawn By
RH
Checked By
AC
Job No.
3410
Date
08/15/2019

Drawing No.
A-200

1/16"=1' 0 8 16 24 32ft

1/8"=1' 4 0 4 8 12 16ft

1/4"=1' 2 0 2 4 6 8ft

1/2"=1' 1 0 1 2 3 4ft

3/4"=1' 1 0 1 2ft

1"=1' 1 0 1ft

1 1/2"=1' 0 1 2ft

3"=1' 0 1 3ft

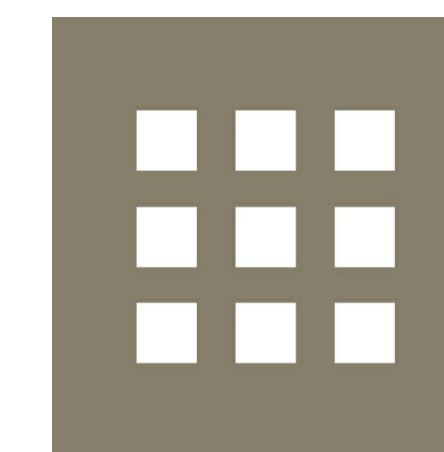
If this sheet is less than 22"x34" in size, it has been reduced.
Graphic scales must be adjusted accordingly.



① COLORED EAST EXTERIOR ELEVATION
1/8" = 1'-0"



② COLORED WEST EXTERIOR ELEVATION
1/8" = 1'-0"



DHK

ARCHITECTS

54 Canal Street (2nd Floor)
Boston, MA 02114
617-267-6408

Prepared for:
CODMAN SQUARE NDC

No.	Date	Revision

Project:
FOUR CORNERS PLAZA
DORCHESTER, MA.

CONSTRUCTION
DOCUMENTS
(95% PROGRESS SET)

Title
COLORED EXTERIOR
ELEVATIONS (EAST &
WEST)

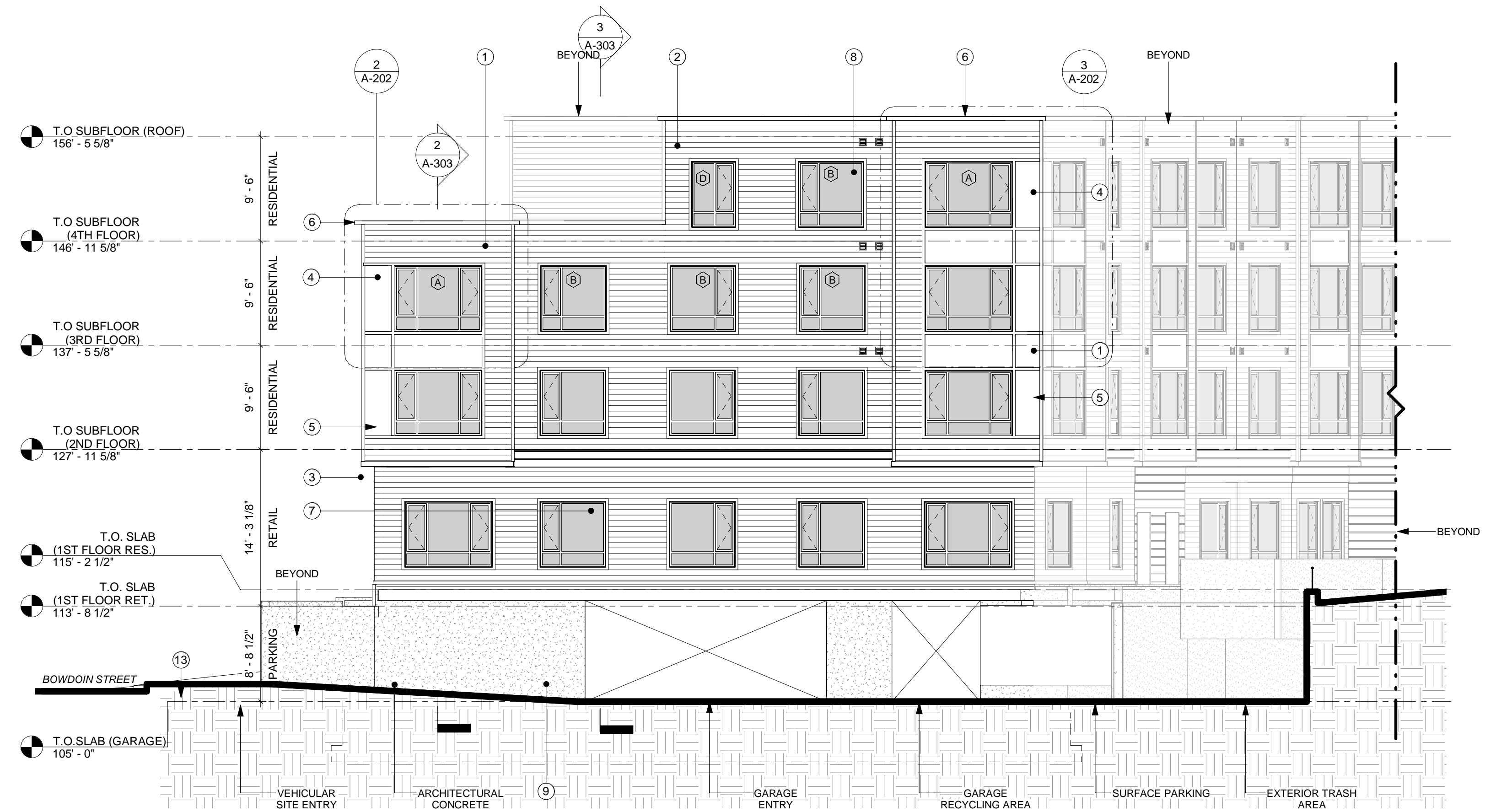
Scale
1/8" = 1'-0"

File Name
A-201.1
Drawn By
Author
Checked By
Approver
Job No.
3410
Date
08/15/2019

Drawing No.
A-201.1

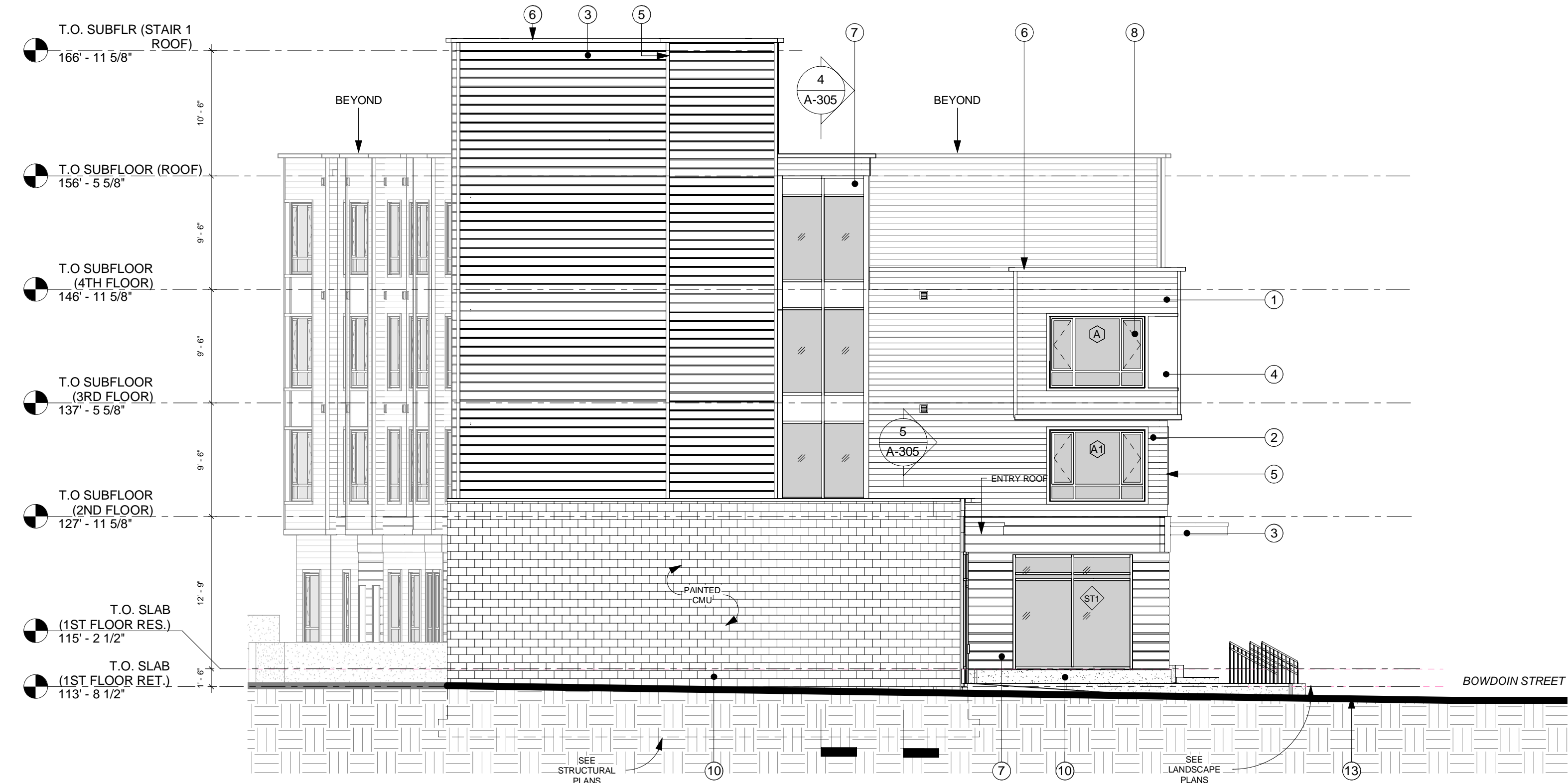


If this sheet is less than 22"x34" in size, it has been reduced.
Graphic scales must be adjusted accordingly.



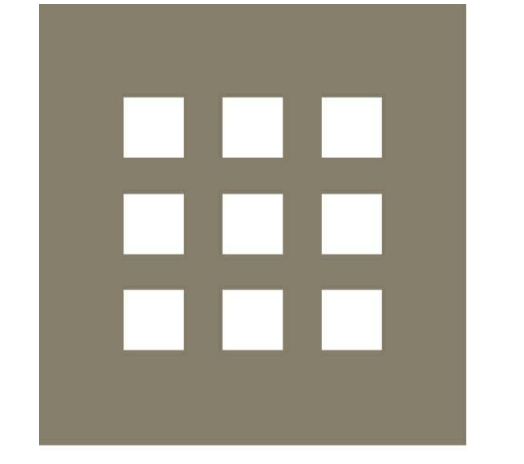
③ EAST EXTERIOR ELEVATION
1/8" = 1'-0"

- EXTERIOR ELEVATION NOTES**
1. FIBER CEMENT 6" CLAPBOARDS (TYPE 1)
 2. FIBER CEMENT 6" CLAPBOARDS (TYPE 2)
 3. FIBER CEMENT HORIZONTAL REVEAL SIDING (9')
 4. FIBER CEMENT PANELING
 5. CORNERBOARDS
 6. CORNICE
 7. STOREFRONT SYSTEM
 8. FIBERGLASS WINDOWS
 9. ARCHITECTURAL CONCRETE
 10. PRECAST CURBING
 11. RETAINING WALL
 12. SITE STAIRS
 13. CITY SIDEWALK



④ WEST EXTERIOR ELEVATION
1/8" = 1'-0"

FIRST FLOOR ELEVATION IS SHOWN IN OBLIQUE VIEW



DHK
ARCHITECTS

54 Canal Street (2nd Floor)
Boston, MA 02114
617-267-6408

Prepared for:
CODMAN SQUARE NDC

Project:
**FOUR CORNERS PLAZA
DORCHESTER, MA.**

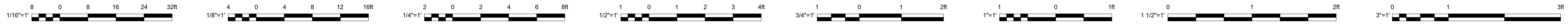
**CONSTRUCTION
DOCUMENTS
(95% PROGRESS SET)**

Title
**EXTERIOR ELEVATIONS
(EAST & WEST)**

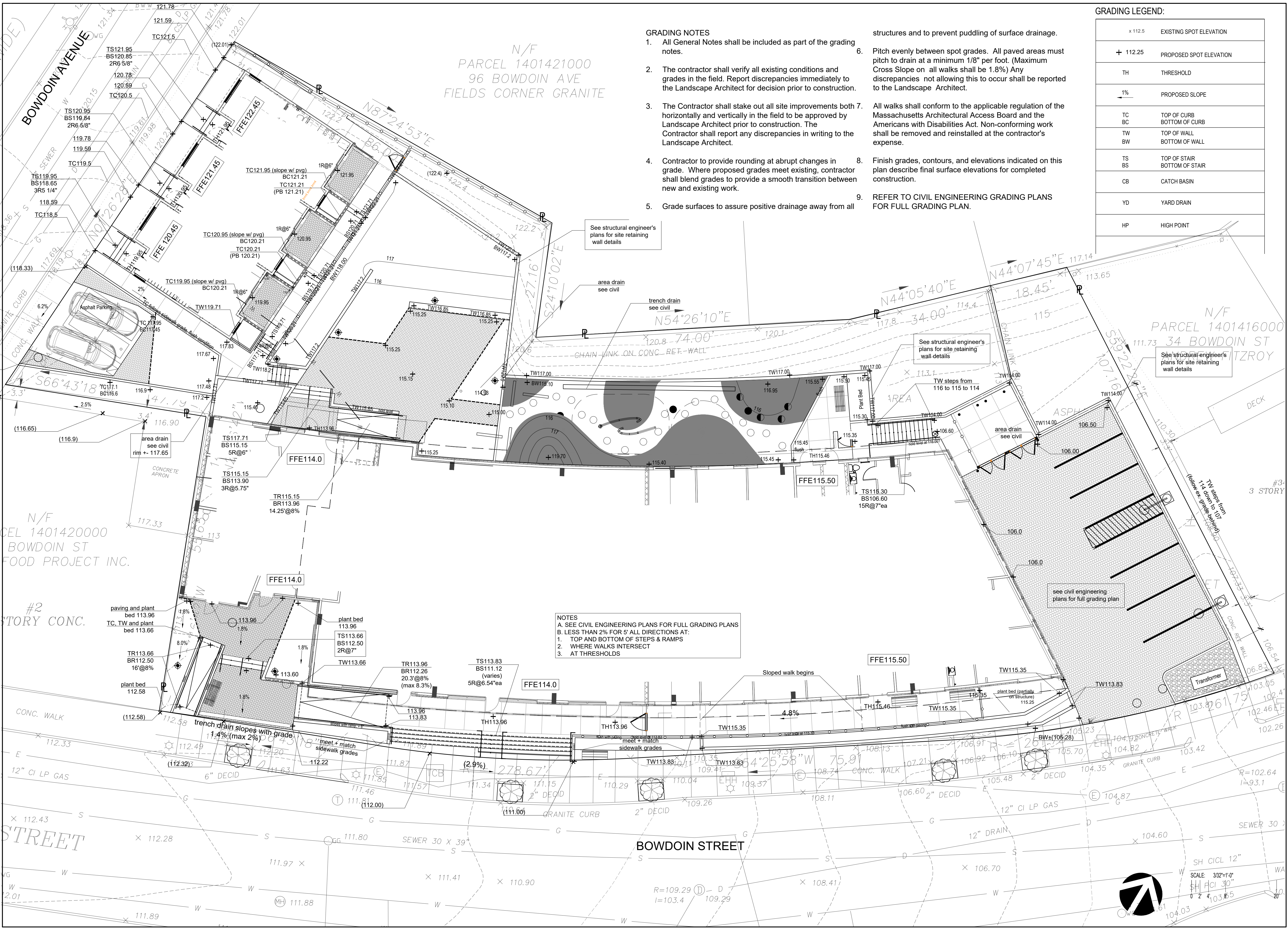
Scale
1/8" = 1'-0"

File Name
A-201
Drawn By
RH
Checked By
AC
Job No.
3410
Date
08/15/2019

Drawing No.
A-201



If this sheet is less than 22"x34" in size, it has been reduced.
Graphic scales must be adjusted accordingly.



GRADING NOTES

- All General Notes shall be included as part of the grading notes.
- The contractor shall verify all existing conditions and grades in the field. Report discrepancies immediately to the Landscape Architect for decision prior to construction.
- The Contractor shall stake out all site improvements both horizontally and vertically in the field to be approved by Landscape Architect prior to construction. The Contractor shall report any discrepancies in writing to the Landscape Architect.
- Contractor to provide rounding at abrupt changes in grade. Where proposed grades meet existing, contractor shall blend grades to provide a smooth transition between new and existing work.
- Grade surfaces to assure positive drainage away from all structures and to prevent puddling of surface drainage.
- Pitch evenly between spot grades. All paved areas must pitch to drain at a minimum 1/8" per foot. (Maximum Cross Slope on all walks shall be 1.8%) Any discrepancies not allowing this to occur shall be reported to the Landscape Architect.
- All walks shall conform to the applicable regulation of the Massachusetts Architectural Access Board and the Americans with Disabilities Act. Non-conforming work shall be removed and reinstalled at the contractor's expense.
- Finish grades, contours, and elevations indicated on this plan describe final surface elevations for completed construction.
- REFER TO CIVIL ENGINEERING GRADING PLANS FOR FULL GRADING PLAN.

GRADING LEGEND:

x 112.5	EXISTING SPOT ELEVATION
+ 112.25	PROPOSED SPOT ELEVATION
TH	THRESHOLD
1%	PROPOSED SLOPE
TC	TOP OF CURB
BC	BOTTOM OF CURB
TW	TOP OF WALL
BW	BOTTOM OF WALL
TS	TOP OF STAIR
BS	BOTTOM OF STAIR
CB	CATCH BASIN
YD	YARD DRAIN
HP	HIGH POINT

NOTES
 A. SEE CIVIL ENGINEERING PLANS FOR FULL GRADING PLANS
 B. LESS THAN 2% FOR 5' ALL DIRECTIONS AT:
 1. TOP AND BOTTOM OF STEPS & RAMPS
 2. WHERE WALKS INTERSECT
 3. AT THRESHOLDS

PROGRESS

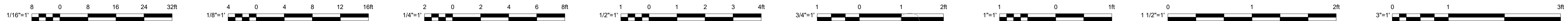
Prepared for:
CODMAN SQUARE NDC

Project:
**FOUR CORNERS PLAZA
DORCHESTER, MA.**

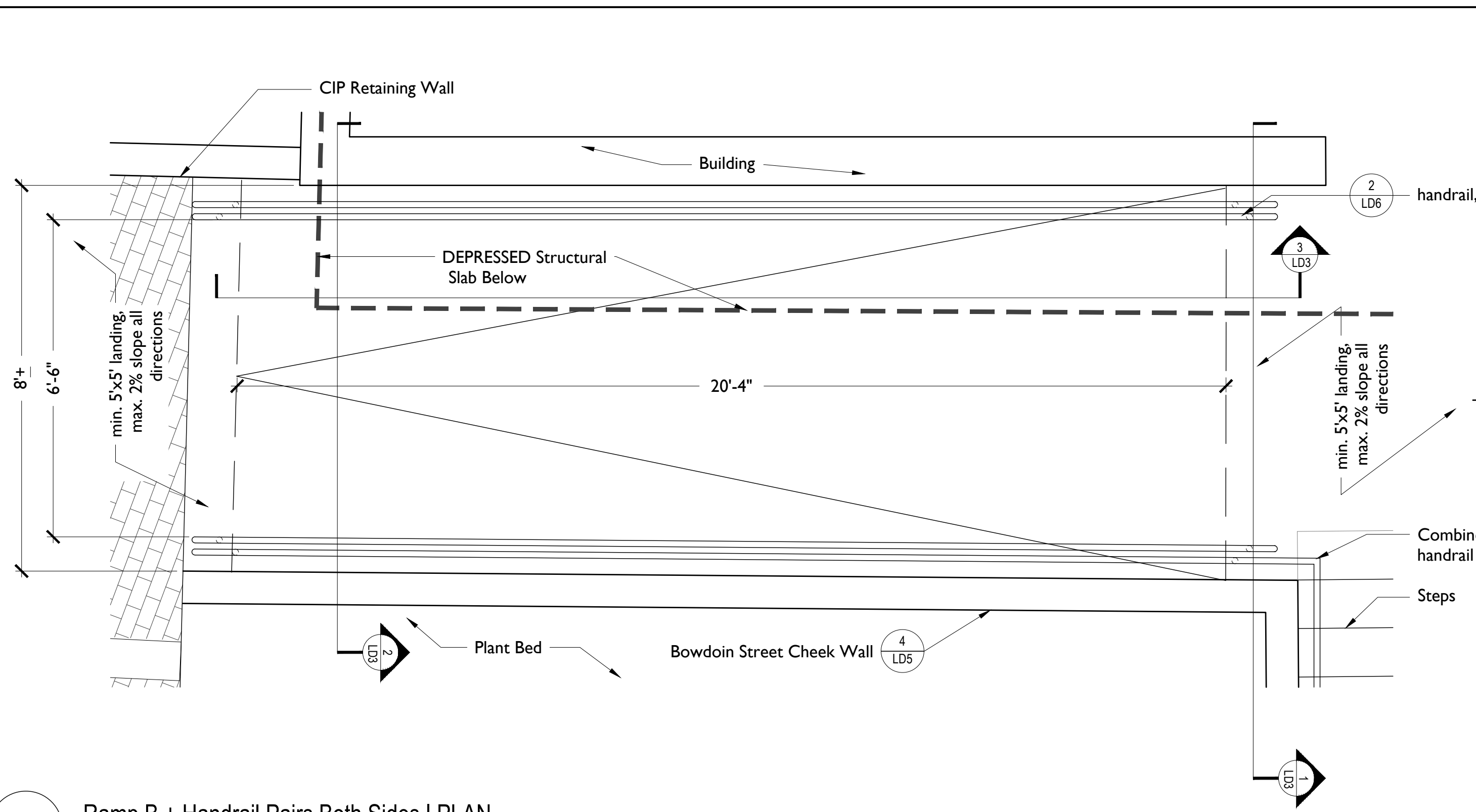
**CONSTRUCTION DOCUMENTS
(90% PROGRESS SET)**

**L SERIES
SPOT GRADING PLAN**

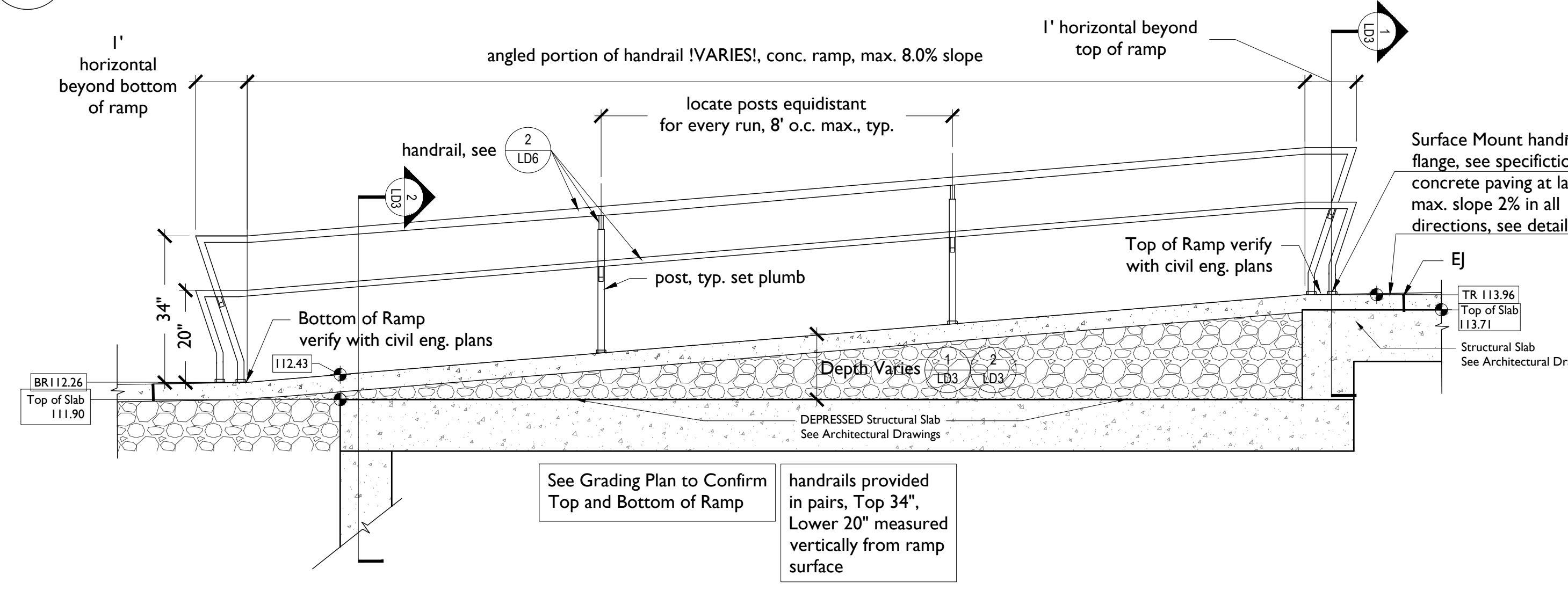
Scale: As Noted	
File Name: L Series	
Drawn By: NA	
Checked By: KP	
Date: 05/31/19	
Job No.:	<p>L3</p>
Drawing No.:	



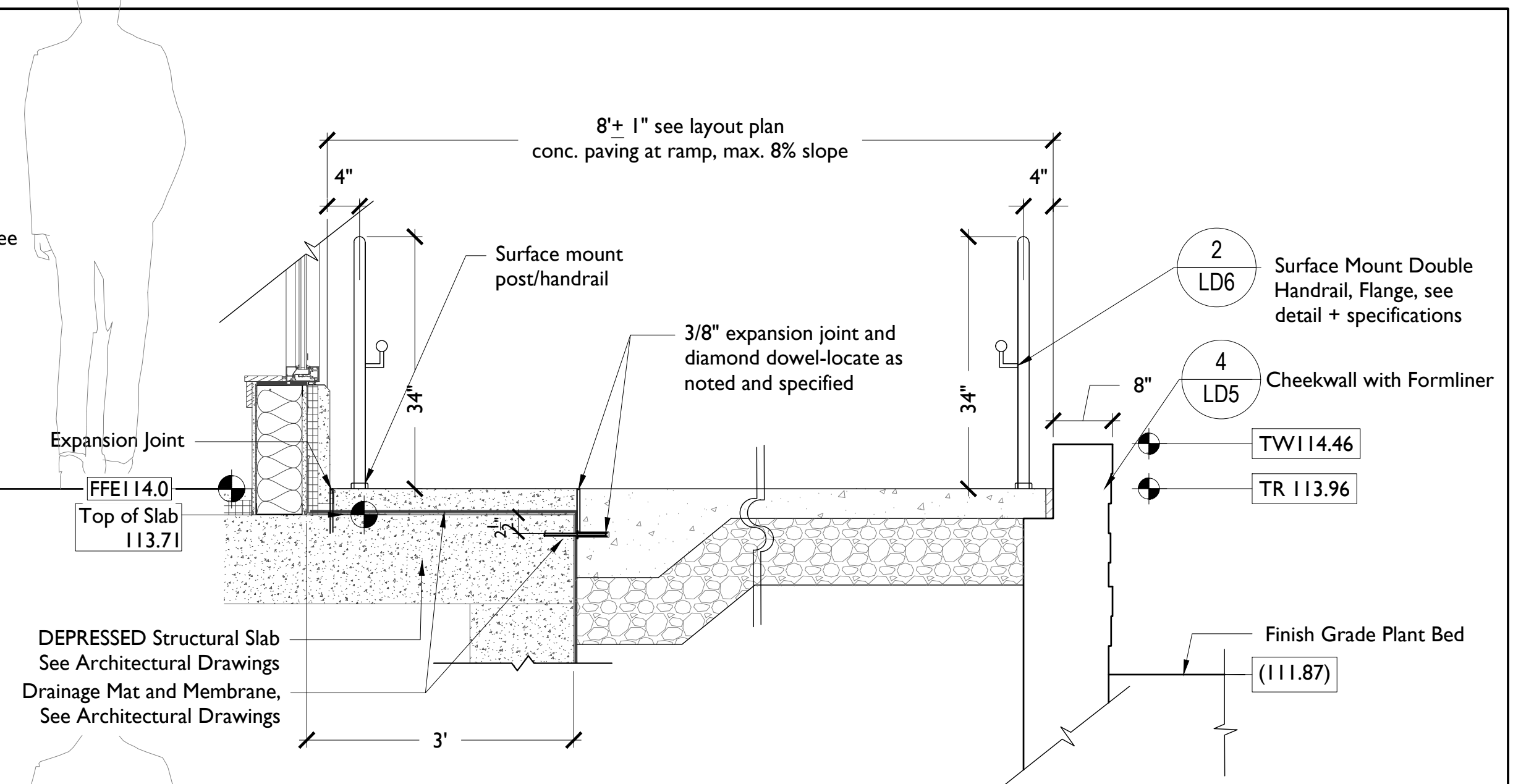
If this sheet is less than 22"x34" in size, it has been reduced.
Graphic scales must be adjusted accordingly.



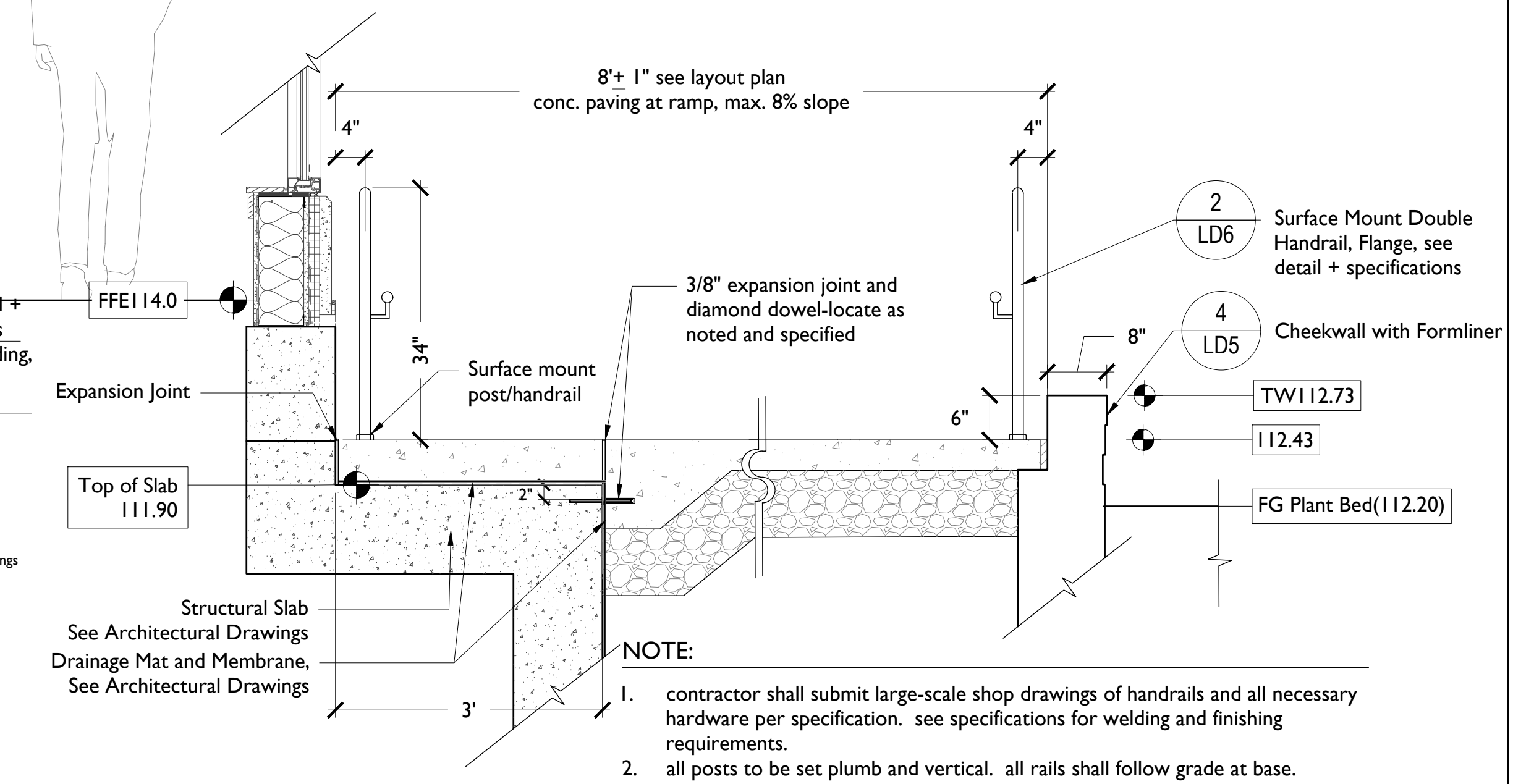
3 Ramp B + Handrail Pairs Both Sides | PLAN
SCALE: 1/2"=1'-0"



4 Ramp B + Handrail Pairs Both Sides | SECTION ELEVATION
SCALE: 1/2"=1'-0"

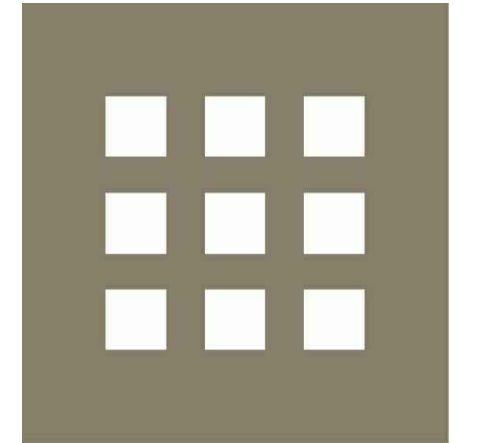


1 Ramp B | Top of Ramp Section
SCALE: 1/2"=1'-0"



2 Ramp B | Ramp Section at DEPRESSED SLAB
SCALE: 1/2"=1'-0"

- NOTE:**
- contractor shall submit large-scale shop drawings of handrails and all necessary hardware per specification. see specifications for welding and finishing requirements.
 - all posts to be set plumb and vertical. all rails shall follow grade at base.
 - two handrails shall be provided (one on each side of the ramp), each with a top and bottom handrail.
 - refer to specifications.



DHK
ARCHITECTS
54 Canal Street (2nd Floor)
Boston, MA 02114
617-267-6408



PROGRESS
Prepared for:
CODMAN SQUARE NDC

No.	Date	Revision

Project:
FOUR CORNERS PLAZA
DORCHESTER, MA.

CONSTRUCTION DOCUMENTS
(90% PROGRESS SET)

Title:
L SERIES DETAILS

Scale: As Noted	
File Name: L Series	
Drawn By: NA	Drawing No. LD3
Checked By: KP	
Date: 05/31/19	