

BOSTON TRANSPORTATION DEPARTMENT

CONSTRUCTION MANAGEMENT PLAN

FOR

GARDEN GARAGE

35 LOMASNEY WAY

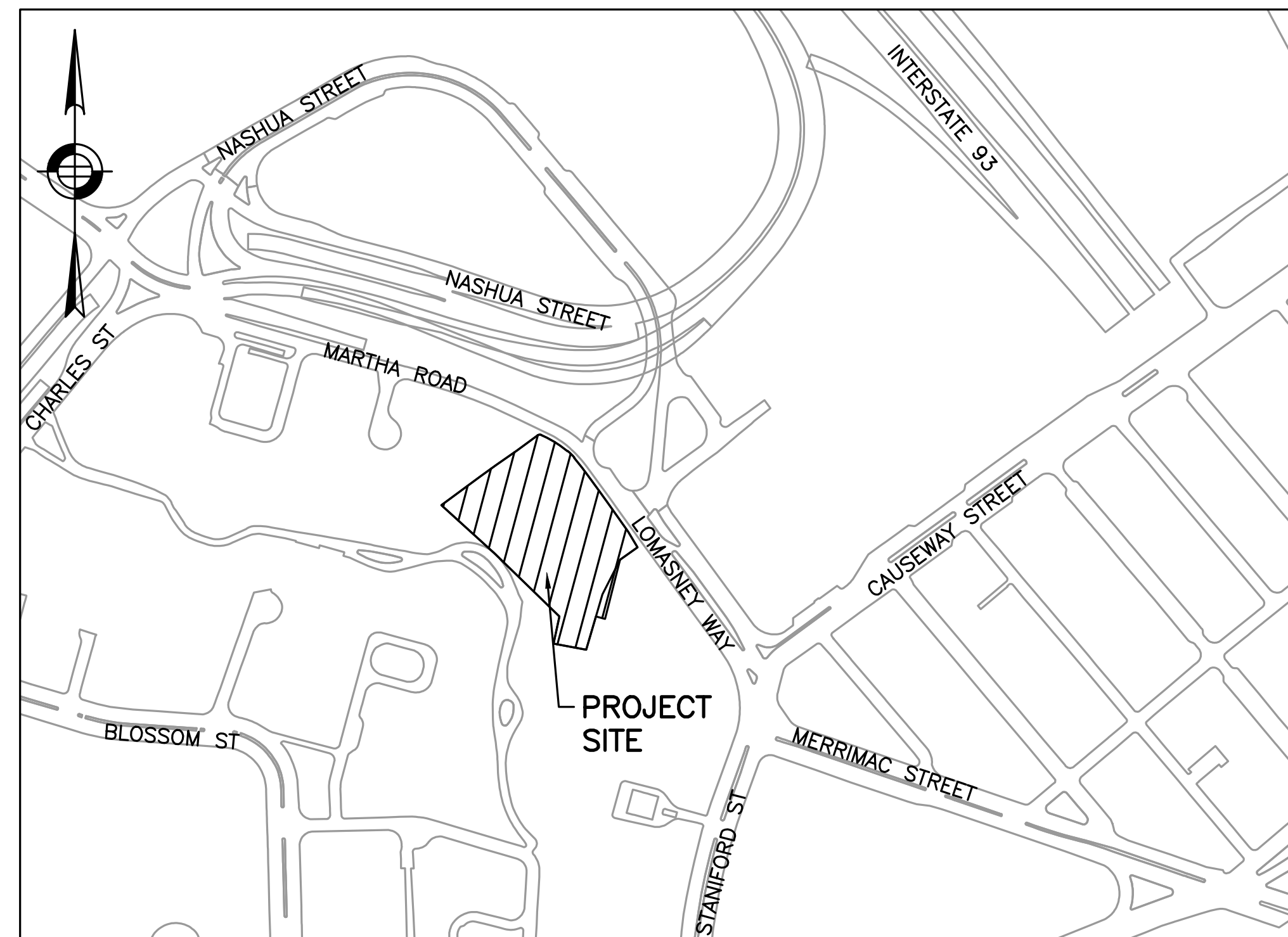
BOSTON, MA

THIS PLAN DEPICTS IN SCHEMATIC FORM, THE ELEMENTS OF AN APPROACH TO THE LAYOUT AND PLANNING OF THE WORK DURING THE PROGRESS OF THE CONSTRUCTION OPERATIONS.

THIS PLAN CONTAINS NO EXPRESS OR IMPLIED REPRESENTATIONS AS TO THE CONSTRUCTABILITY OF ANY ASPECT OF THE WORK. THE CONSTRUCTION CONTRACTOR REMAINS EXCLUSIVELY RESPONSIBLE FOR THE PLANNING, MEANS, METHODS, SEQUENCES, PROCEDURES AND EXECUTION OF THE WORK, AND FOR THE PROPER AND TIMELY IMPLEMENTATION OF ALL INCIDENTAL AND/OR REQUIRED SAFETY PRECAUTIONS AND PROGRAMS.

NOTHING IN THIS PLAN SHALL RELIEVE, OR OTHERWISE DIMINISH THE RESPONSIBILITY OF THE CONTRACTOR FOR THIS EXCLUSIVE RESPONSIBILITY.

THE PREPARER OF THIS PLAN HAS NO ROLE IN THE OVERSIGHT OR OTHERWISE IN THE IMPLEMENTATION OF THIS PLAN.



LOCUS PLAN

SCALE: 1"=250' (APPROXIMATE)

TOWER CRANE ERECTION:

ANY TOWER/MOBILE CRANE(S) THAT NEED TO BE ERECTED OR DISASSEMBLED WILL REQUIRE A SEPARATE "CRANE ERECTION PLAN" THAT MUST BE SUBMITTED TO AND APPROVED BY LTD PRIOR TO CRANE ERECTION/DISASSEMBLY. THIS PLAN WILL DEMONSTRATE THE CONTRACTOR'S PROPOSED APPROACH TO ERECTION/DISASSEMBLY OF THE TOWER/MOBILE CRANE(S). THE PLAN WILL INDICATE ANY STREET CLOSURES, LANE OCCUPATIONS, DETOURS, POLICE DETAIL OFFICERS, AND SIGNAGE. ALL TEMPORARY TRAFFIC CONTROL DEVICES AND TRAFFIC SET-UPS WILL BE INSTALLED PER MUTCD REQUIREMENTS.

ALL WORK SHALL CONFORM TO THESE PLANS, THE BOSTON TRANSPORTATION DEPARTMENT STANDARDS AND SPECIFICATIONS, THE 1988 MASSACHUSETTS HIGHWAY DEPARTMENT STANDARD SPECIFICATIONS FOR HIGHWAYS AND BRIDGES (ENGLISH EDITION); THE SUPPLEMENTAL SPECIFICATIONS (ENGLISH EDITION), DATED FEBRUARY 25, 2010; THE 2010 CONSTRUCTION STANDARDS; THE CURRENT MANUAL ON UNIFORM TRAFFIC CONTROL DEVICES FOR STREETS AND HIGHWAYS (MUTCD) WITH LATEST REVISIONS; THE 1990 STANDARD DRAWINGS FOR SIGNS AND SUPPORTS; THE 1968 STANDARD DRAWINGS FOR TRAFFIC SIGNALS AND HIGHWAY LIGHTING; AND THE AMERICAN STANDARD FOR NURSERY STOCK CURRENT EDITION (ANSI Z-60.1-2004). WHERE CONFLICTS EXIST, THE BOSTON TRANSPORTATION DEPARTMENT STANDARDS AND SPECIFICATIONS SHALL GOVERN.



HOWARD STEIN HUDSON
 11 Beacon Street, Suite 1010
 Boston, MA 02108
 www.hshassoc.com



CITY OF BOSTON TRANSPORTATION DEPARTMENT
 ENGINEERING DIVISION
 CONSTRUCTION MANAGEMENT PLAN

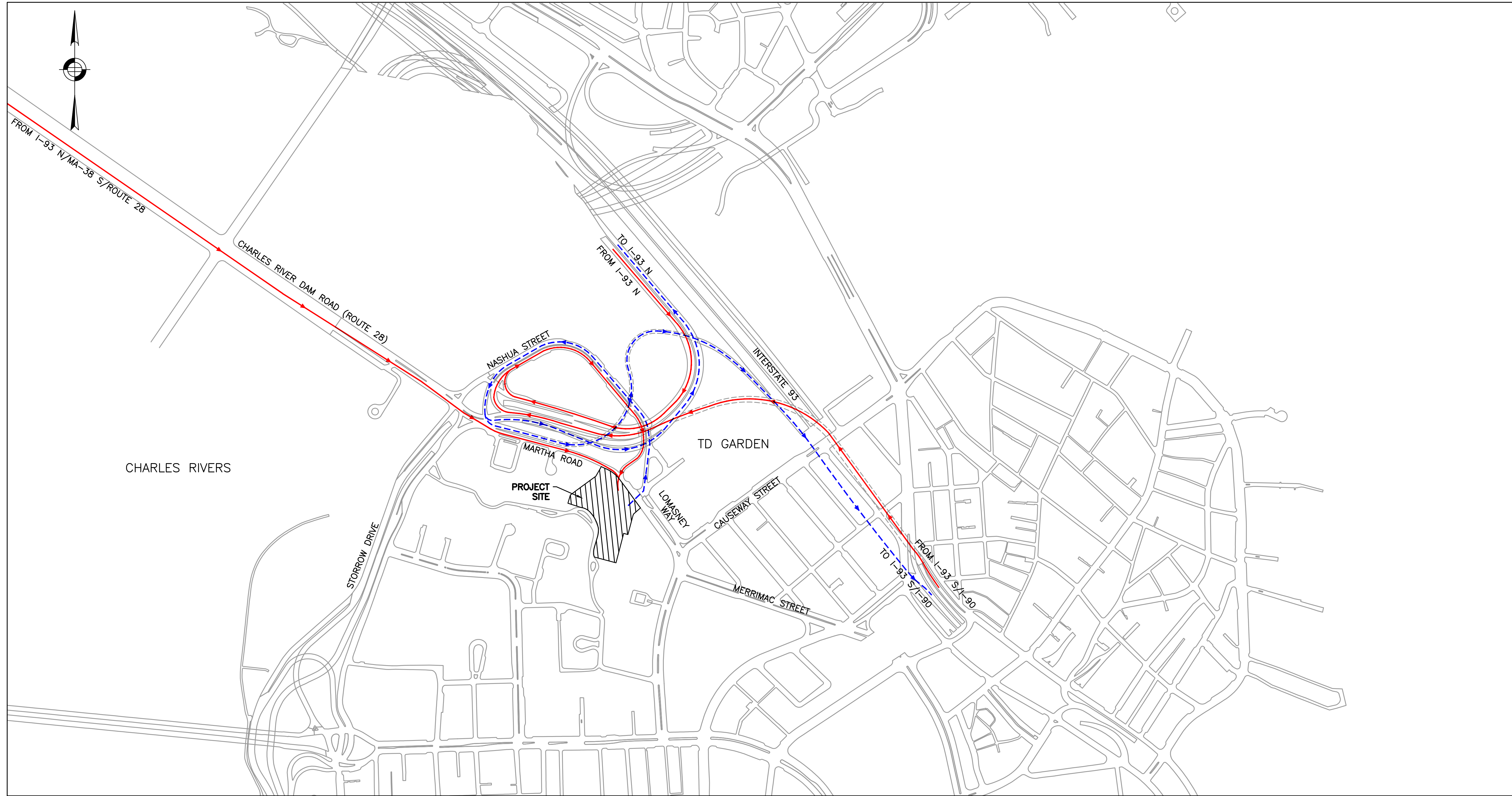
GARDEN GARAGE
COVER SHEET

BOSTON

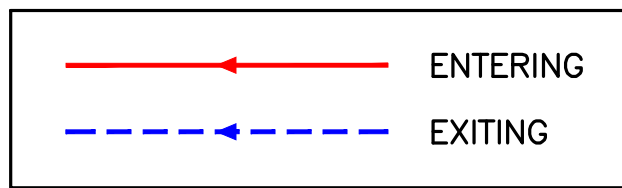
DESIGNED BY K.ROMANO
 DRAWN BY K.ROMANO
 CHECKED BY B.ZIMOLKA
 APPROVED BY R.BURGESS

AREA: 1
 DISTRICT: 1

DATE: JAN 24, 2018



LEGEND



Equity Residential



DESIGNED BY K.ROMANO
 DRAWN BY K.ROMANO
 CHECKED BY B.ZIMOLKA
 APPROVED BY R.BURGESS

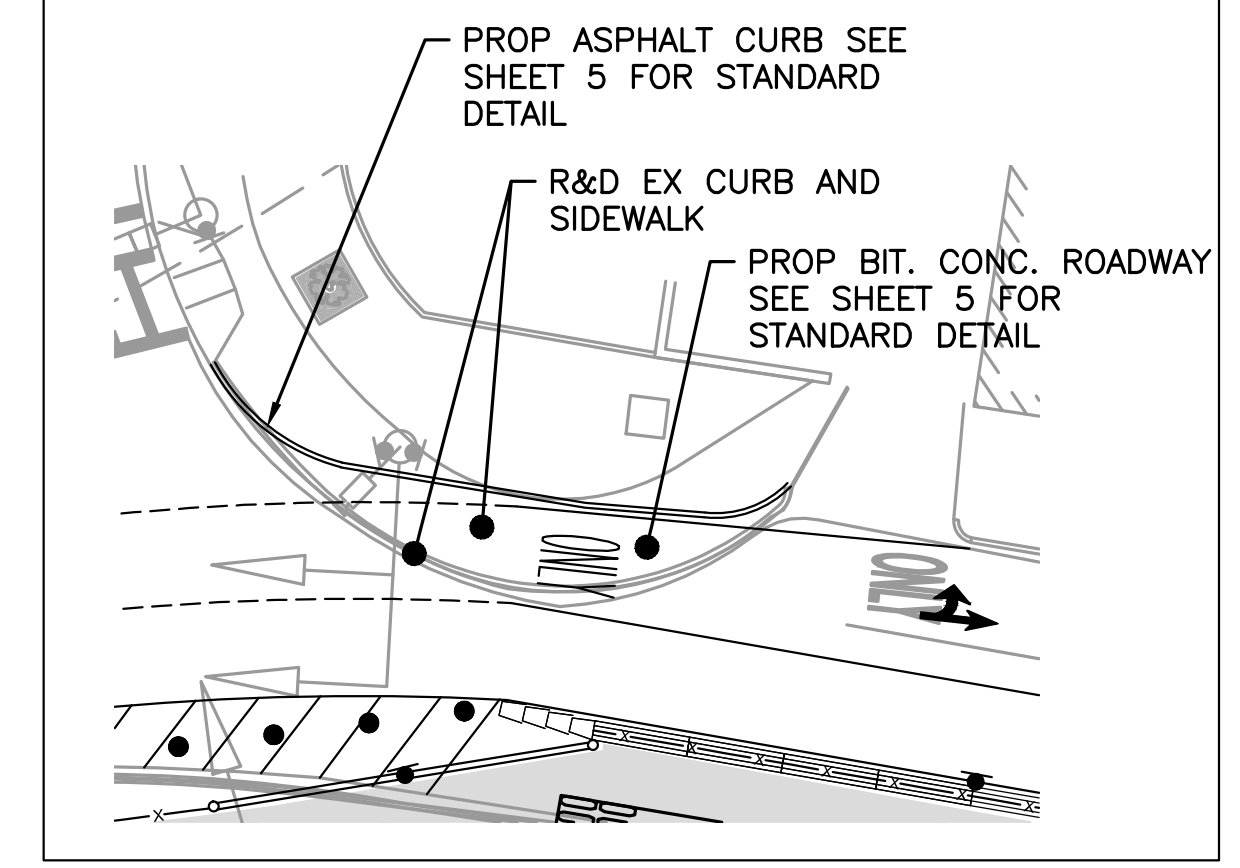
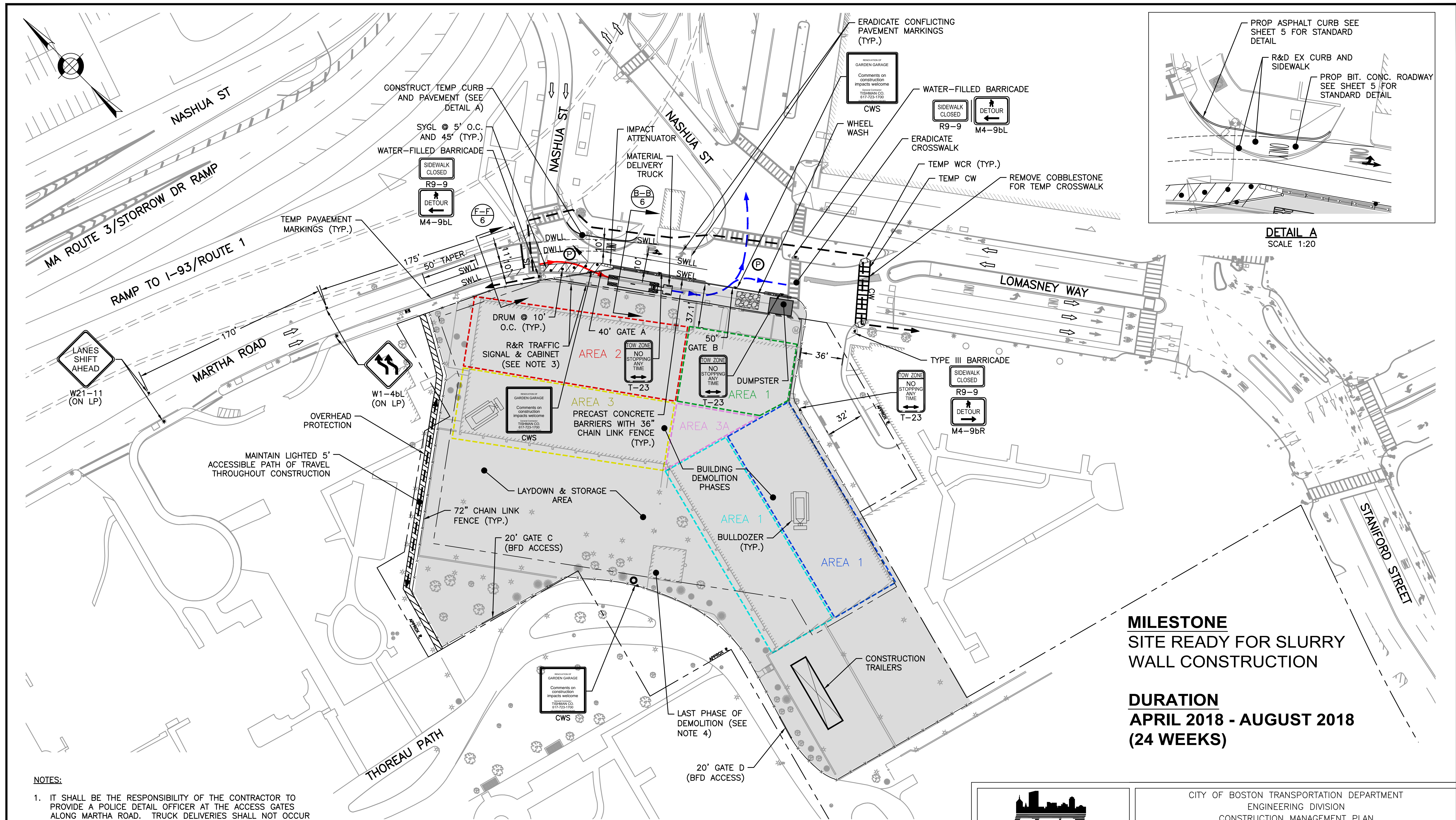
CITY OF BOSTON TRANSPORTATION DEPARTMENT
 ENGINEERING DIVISION
 CONSTRUCTION MANAGEMENT PLAN

**GARDEN GARAGE
 TRUCK ROUTING**

BOSTON

AREA: 1
 DISTRICT: 1

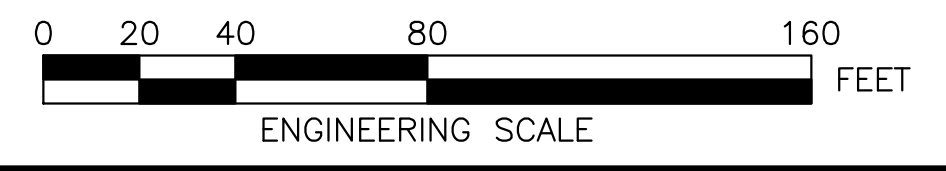
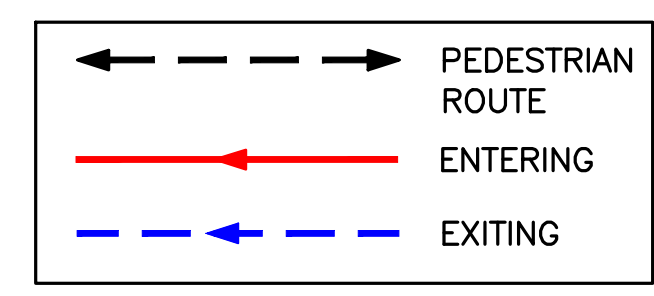
DATE: JAN 24, 2018




MILESTONE
SITE READY FOR SLURRY
WALL CONSTRUCTION

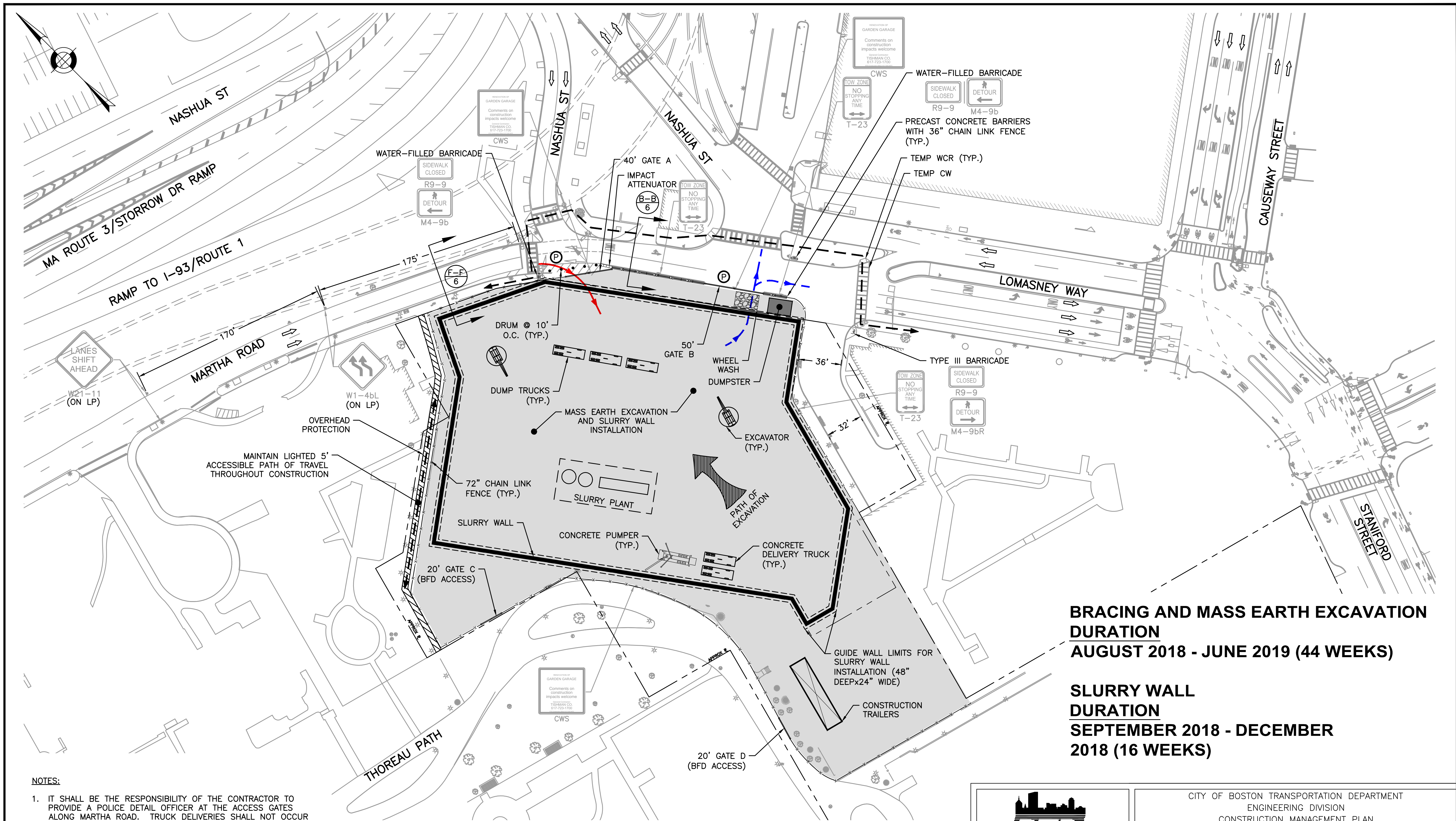
DURATION
APRIL 2018 - AUGUST 2018
(24 WEEKS)

- NOTES:**
- IT SHALL BE THE RESPONSIBILITY OF THE CONTRACTOR TO PROVIDE A POLICE DETAIL OFFICER AT THE ACCESS GATES ALONG MARTHA ROAD. TRUCK DELIVERIES SHALL NOT OCCUR WITHOUT A POLICE DETAIL PRESENT.
 - SEE SHEET 22 - DETAILS 1 & 2 FOR TRUCK TURNING MANEUVERS.
 - SEE TEMPORARY TRAFFIC SIGNAL PLAN AND SCHEDULE ON SHEET 18.
 - DEMOLITION SHALL OCCUR IN SEQUENTIAL ORDER STARTING IN AREA 1 AND ENDING WITH THE EXISTING BUILDING ALONG THOREAU PATH.



 BOSTON TRANSPORTATION DEPARTMENT	
DESIGNED BY	K.ROMANO
DRAWN BY	K.ROMANO
CHECKED BY	B.ZIMOLKA
APPROVED BY	R.BURGESS

CITY OF BOSTON TRANSPORTATION DEPARTMENT ENGINEERING DIVISION CONSTRUCTION MANAGEMENT PLAN	
GARDEN GARAGE SITE PREPARATION AND DEMOLITION	
BOSTON	
AREA: 1	DATE: JAN 24, 2018
DISTRICT: 1	

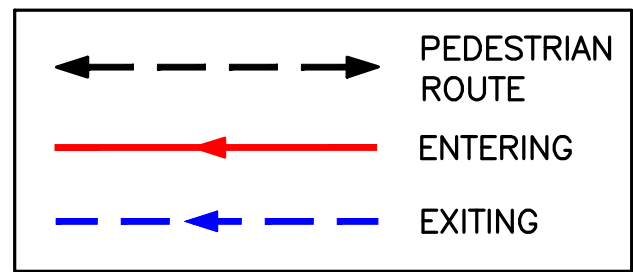


BRACING AND MASS EARTH EXCAVATION DURATION
AUGUST 2018 - JUNE 2019 (44 WEEKS)

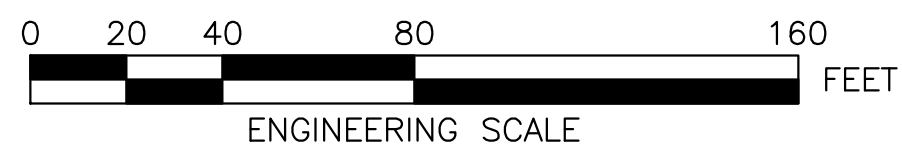
SLURRY WALL DURATION
SEPTEMBER 2018 - DECEMBER 2018 (16 WEEKS)

NOTES:


- IT SHALL BE THE RESPONSIBILITY OF THE CONTRACTOR TO PROVIDE A POLICE DETAIL OFFICER AT THE ACCESS GATES ALONG MARTHA ROAD. TRUCK DELIVERIES SHALL NOT OCCUR WITHOUT A POLICE DETAIL PRESENT.
- SEE SHEET 22 - DETAILS 3 & 4 FOR TRUCK TURNING MANEUVERS.



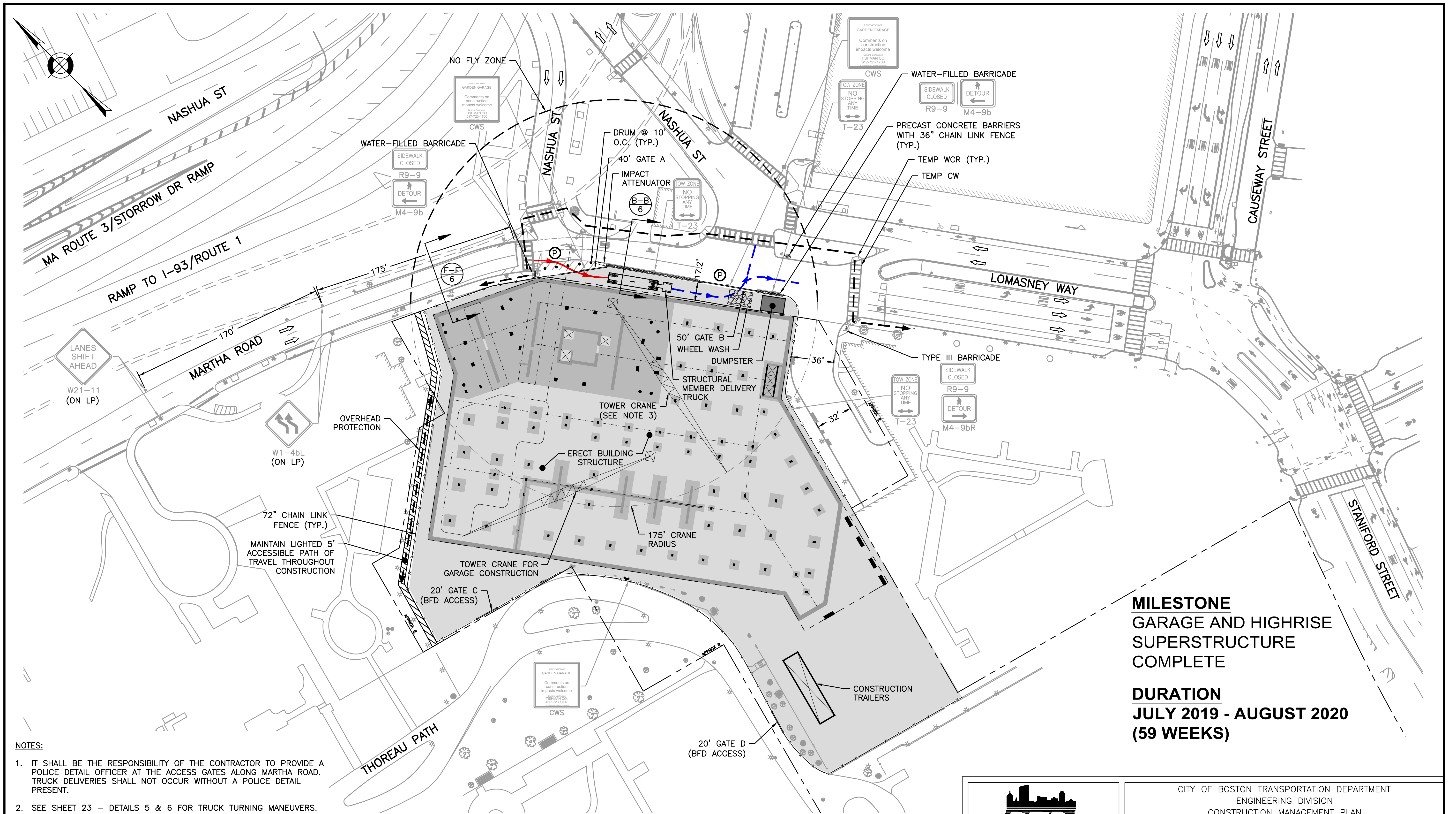
MILESTONE
SLURRY WALL COMPLETE



DRAWING PREPARED BY HOWARD STEIN HUDSON

 BOSTON TRANSPORTATION DEPARTMENT	
DESIGNED BY	K.ROMANO
DRAWN BY	K.ROMANO
CHECKED BY	B.ZIMOLKA
APPROVED BY	R.BURGESS

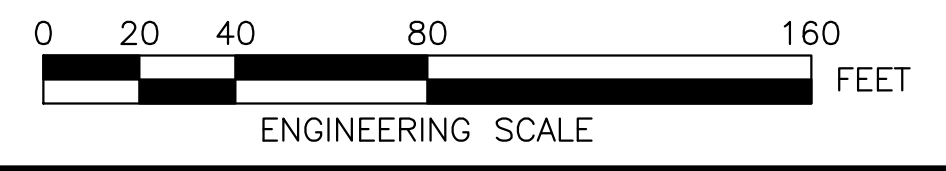
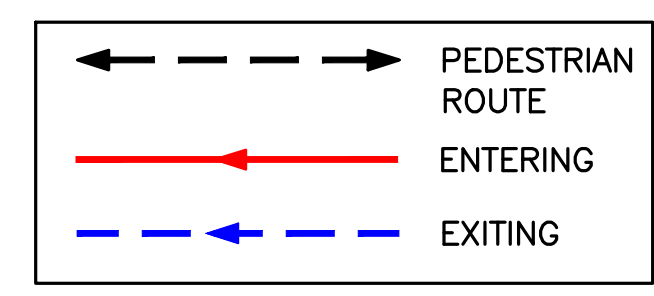
CITY OF BOSTON TRANSPORTATION DEPARTMENT ENGINEERING DIVISION CONSTRUCTION MANAGEMENT PLAN	
GARDEN GARAGE BRACING, EXCAVATION, AND SLURRY WALL INSTALLATION	
BOSTON	
AREA: 1	DATE: JAN 24, 2018
DISTRICT: 1	




MILESTONE
GARAGE AND HIGHRISE
SUPERSTRUCTURE
COMPLETE

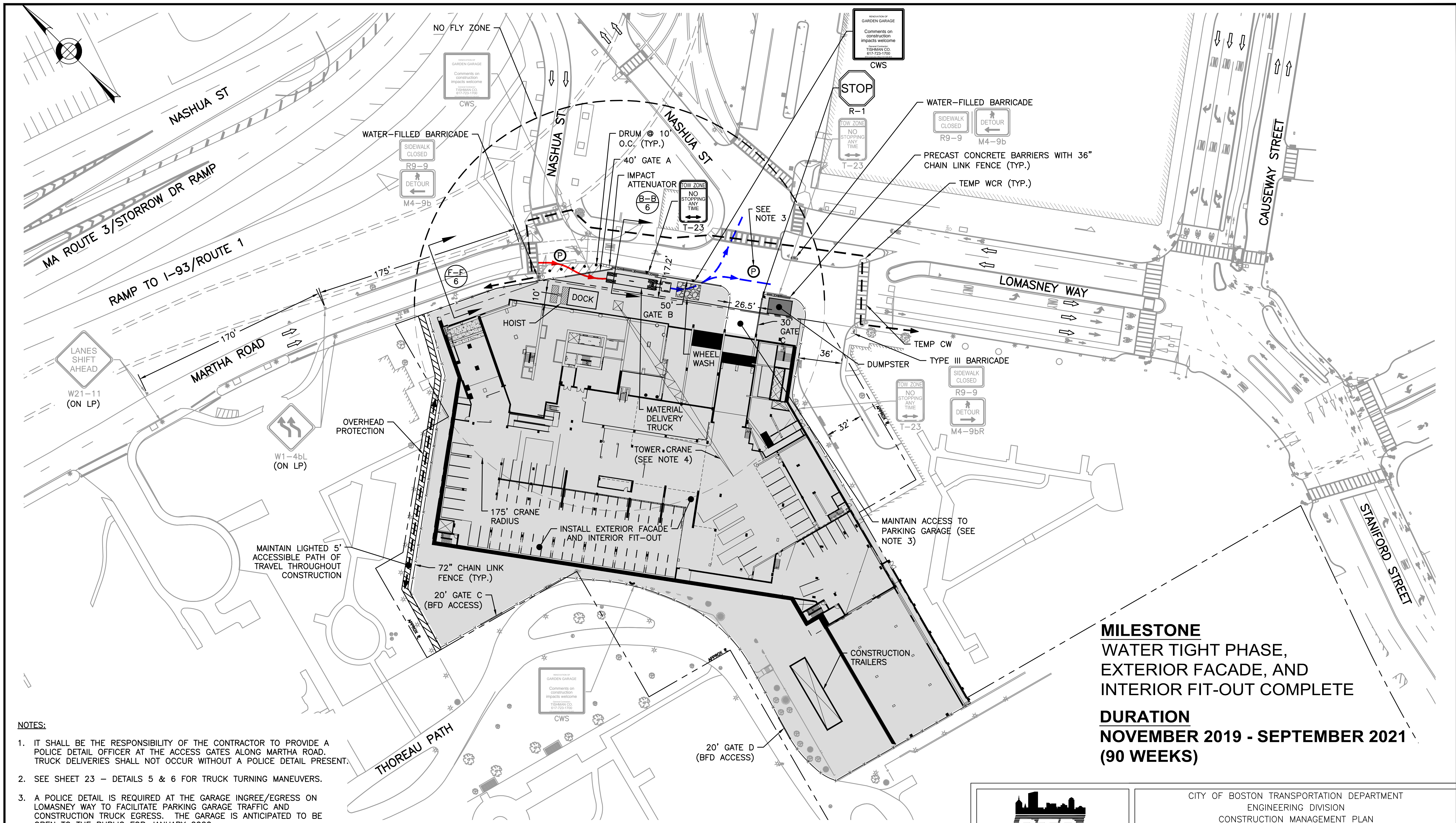
DURATION
JULY 2019 - AUGUST 2020
(59 WEEKS)

- NOTES:**
- IT SHALL BE THE RESPONSIBILITY OF THE CONTRACTOR TO PROVIDE A POLICE DETAIL OFFICER AT THE ACCESS GATES ALONG MARTHA ROAD. TRUCK DELIVERIES SHALL NOT OCCUR WITHOUT A POLICE DETAIL PRESENT.
 - SEE SHEET 23 - DETAILS 5 & 6 FOR TRUCK TURNING MANEUVERS.
 - ANY TOWER/MOBILE CRANE(S) THAT NEED TO BE ERECTED OR DISASSEMBLED WILL REQUIRE A SEPARATE "CRANE ERECTION PLAN" THAT MUST BE SUBMITTED TO AND APPROVED BY BTD PRIOR TO CRANE ERECTION/DISASSEMBLY. THIS PLAN WILL DEMONSTRATE THE CONTRACTOR'S PROPOSED APPROACH TO ERECTION/DISASSEMBLY OF THE TOWER/MOBILE CRANE(S). THE PLAN WILL INDICATE ANY STREET CLOSURES, LANE OCCUPATIONS, DETOURS, POLICE DETAIL OFFICERS, AND SIGNAGE. ALL TEMPORARY TRAFFIC CONTROL DEVICES AND TRAFFIC SET-UPS WILL BE INSTALLED PER MUTCD REQUIREMENTS.



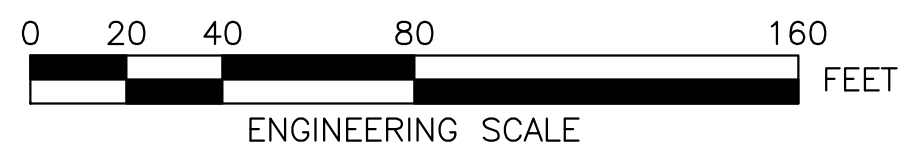
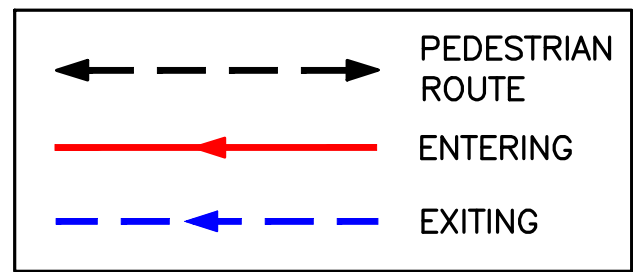
 BOSTON TRANSPORTATION DEPARTMENT	
DESIGNED BY	K.ROMANO
DRAWN BY	K.ROMANO
CHECKED BY	B.ZIMOLKA
APPROVED BY	R.BURGESS

CITY OF BOSTON TRANSPORTATION DEPARTMENT ENGINEERING DIVISION CONSTRUCTION MANAGEMENT PLAN	
GARDEN GARAGE STRUCTURE ERECTION	
BOSTON	
AREA: 1	DATE: JAN 24, 2018
DISTRICT: 1	




NOTES:

- IT SHALL BE THE RESPONSIBILITY OF THE CONTRACTOR TO PROVIDE A POLICE DETAIL OFFICER AT THE ACCESS GATES ALONG MARTHA ROAD. TRUCK DELIVERIES SHALL NOT OCCUR WITHOUT A POLICE DETAIL PRESENT.
- SEE SHEET 23 - DETAILS 5 & 6 FOR TRUCK TURNING MANEUVERS.
- A POLICE DETAIL IS REQUIRED AT THE GARAGE INGRESS/EGRESS ON LOMASNEY WAY TO FACILITATE PARKING GARAGE TRAFFIC AND CONSTRUCTION TRUCK EGRESS. THE GARAGE IS ANTICIPATED TO BE OPEN TO THE PUBLIC FOR JANUARY 2020.
- ANY TOWER/MOBILE CRANE(S) THAT NEED TO BE ERECTED OR DISASSEMBLED WILL REQUIRE A SEPARATE "CRANE ERECTION PLAN" THAT MUST BE SUBMITTED TO AND APPROVED BY BTM PRIOR TO CRANE ERECTION/DISASSEMBLY. THIS PLAN WILL DEMONSTRATE THE CONTRACTOR'S PROPOSED APPROACH TO ERECTION/DISASSEMBLY OF THE TOWER/MOBILE CRANE(S). THE PLAN WILL INDICATE ANY STREET CLOSURES, LANE OCCUPATIONS, DETOURS, POLICE DETAIL OFFICERS, AND SIGNAGE. ALL TEMPORARY TRAFFIC CONTROL DEVICES AND TRAFFIC SET-UPS WILL BE INSTALLED PER MUTCD REQUIREMENTS.



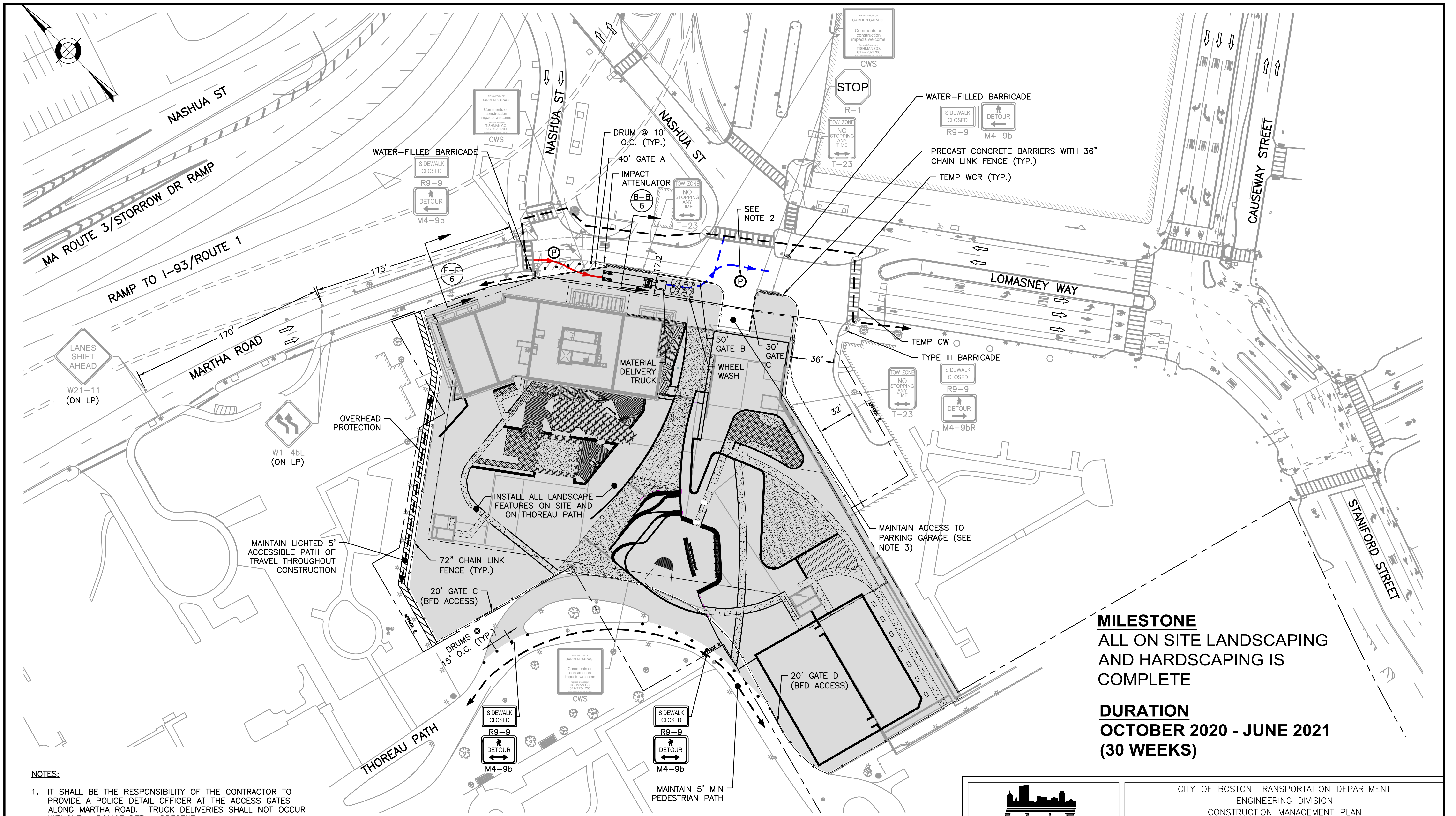
MILESTONE
WATER TIGHT PHASE,
EXTERIOR FACADE, AND
INTERIOR FIT-OUT COMPLETE

DURATION
NOVEMBER 2019 - SEPTEMBER 2021
(90 WEEKS)

 BOSTON TRANSPORTATION DEPARTMENT	
DESIGNED BY	K.ROMANO
DRAWN BY	K.ROMANO
CHECKED BY	B.ZIMOLKA
APPROVED BY	R.BURGESS

CITY OF BOSTON TRANSPORTATION DEPARTMENT ENGINEERING DIVISION CONSTRUCTION MANAGEMENT PLAN	
GARDEN GARAGE EXTERIOR FACADE AND INTERIOR FIT-OUT	
BOSTON	
AREA: 1	DATE: JAN 24, 2018
DISTRICT: 1	

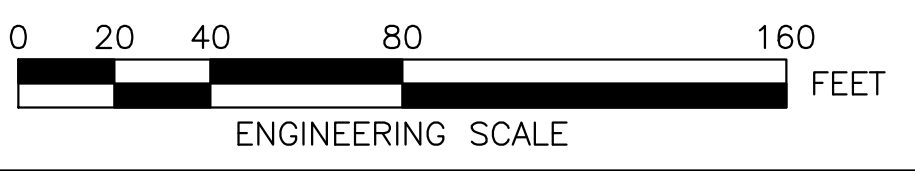
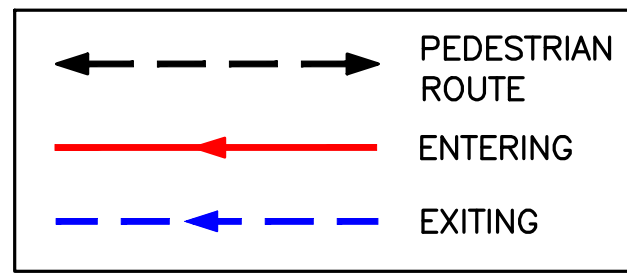




MILESTONE
 ALL ON SITE LANDSCAPING
 AND HARDSCAPING IS
 COMPLETE

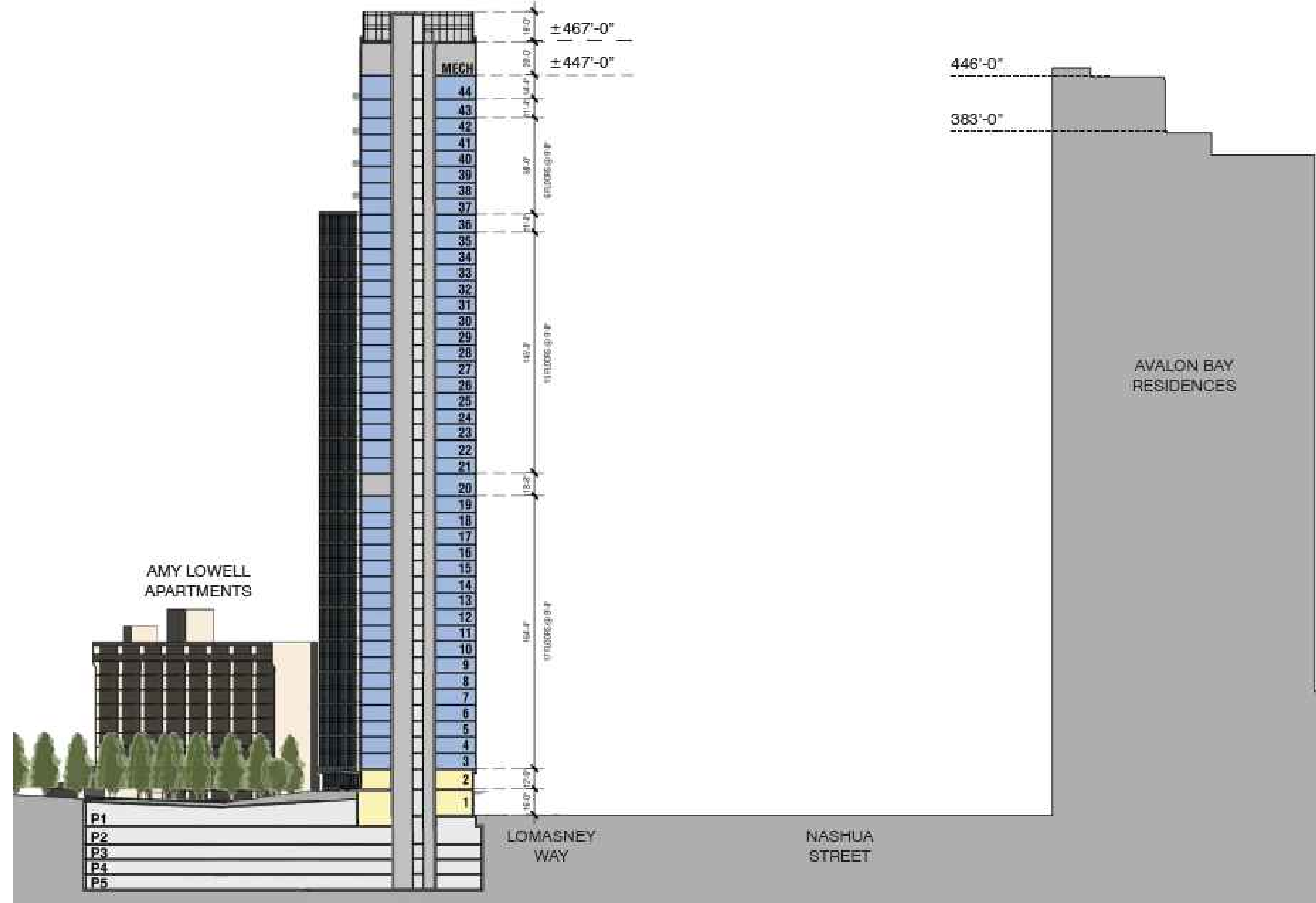
DURATION
 OCTOBER 2020 - JUNE 2021
 (30 WEEKS)

- NOTES:**
- IT SHALL BE THE RESPONSIBILITY OF THE CONTRACTOR TO PROVIDE A POLICE DETAIL OFFICER AT THE ACCESS GATES ALONG MARTHA ROAD. TRUCK DELIVERIES SHALL NOT OCCUR WITHOUT A POLICE DETAIL PRESENT.
 - A POLICE DETAIL IS REQUIRED AT THE GARAGE INGRESS/EGRESS ON LOMASNEY WAY TO FACILITATE PARKING GARAGE TRAFFIC AND CONSTRUCTION TRUCK EGRESS. THE GARAGE IS ANTICIPATED TO BE OPEN TO THE PUBLIC FOR JANUARY 2020.



 BOSTON TRANSPORTATION DEPARTMENT	DESIGNED BY <u>K.ROMANO</u>
	DRAWN BY <u>K.ROMANO</u>
	CHECKED BY <u>B.ZIMOLKA</u>
	APPROVED BY <u>R.BURGESS</u>

CITY OF BOSTON TRANSPORTATION DEPARTMENT ENGINEERING DIVISION CONSTRUCTION MANAGEMENT PLAN	
GARDEN GARAGE HARDSCAPING	
BOSTON	
AREA: 1	DATE: JAN 24, 2018
DISTRICT: 1	



DESIGNED BY K.ROMANO
 DRAWN BY K.ROMANO
 CHECKED BY B.ZIMOLKA
 APPROVED BY R.BURGESS

CITY OF BOSTON TRANSPORTATION DEPARTMENT
 ENGINEERING DIVISION
 CONSTRUCTION MANAGEMENT PLAN

GARDEN GARAGE
FINAL RENDERINGS

BOSTON

AREA: 1
 DISTRICT: 1

DATE: JAN 24, 2018
 DRAWING NO. CMP-026