

BOSTON WHARF CO.
INDUSTRIAL
REAL ESTATE



GE HEADQUARTERS PROJECT

Public Meeting

August 17, 2016

Gensler

Agenda

- 1. About GE**
- 2. GE in Boston**
- 3. GE Headquarters Campus**
- 4. Discussion**



We are GE

We are transforming industries by connecting people, data and machines. Living in perpetual motion, we are sensing, predicting and responding to make the world work better.



What we do



We do it with the
strength of our team





GEnx 747
STR
AutoAir
4013527-901 G01
S/N 003
WEIGHT 2127 LBS.
INSPECTION
OK
INSTALL STRUT
BEFORE NEW TEST
INSTALL STRUT PRIOR TO TESTING WITH W/N, ADDRESS GECHP
GTY SERIAL NO. 4013527-901-1 AND -2

FOR GROUND
TEST ONLY

The world of GE is the world we live in.
It is a world for the curious, the bold,
and the optimistic. It is a laboratory of
ideas creating the tools of tomorrow.
It is you and me ushering in a new era.

We are GE

Boston and GE: Better Together

Good for GE

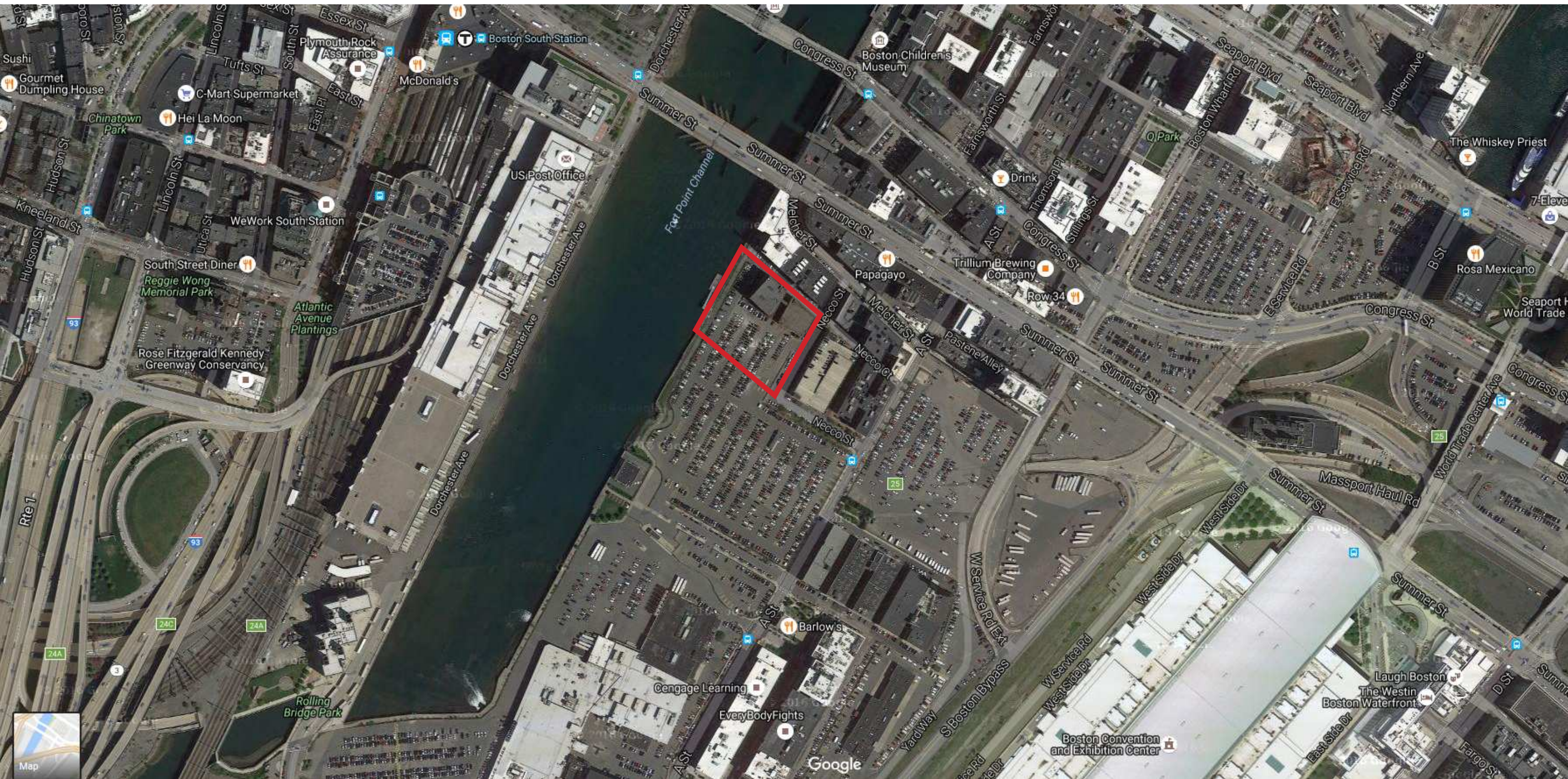
- Innovation, talent and infrastructure
- Great business ecosystem: companies, universities, startups, R&D, supportive policy environment.
- Diverse, technologically-fluent workforce focused on solving challenges for the world.

The move to Boston will enable GE to lead in the digital industrial space and better serve our customers.

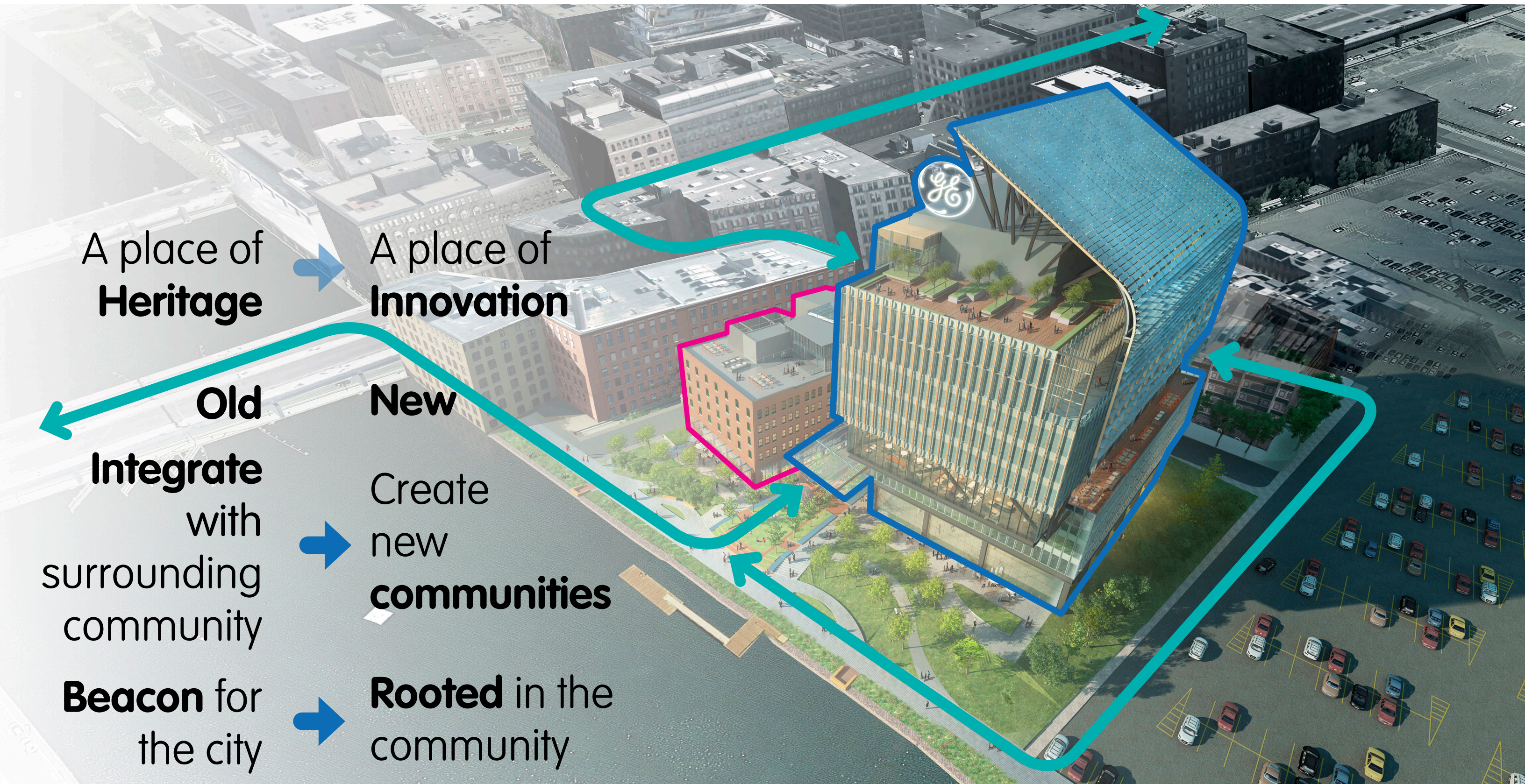
Good for BOSTON

- Hundreds of high-quality professional GE jobs and thousands of other jobs including construction
- \$260 million in new income (GE salary & indirect) will be generated
- \$28 million will go to local vendors.
- \$50 million grant to Boston Public Schools, community health centers and jobs of the future

Local engagement, volunteerism, public spaces and convening/learning events



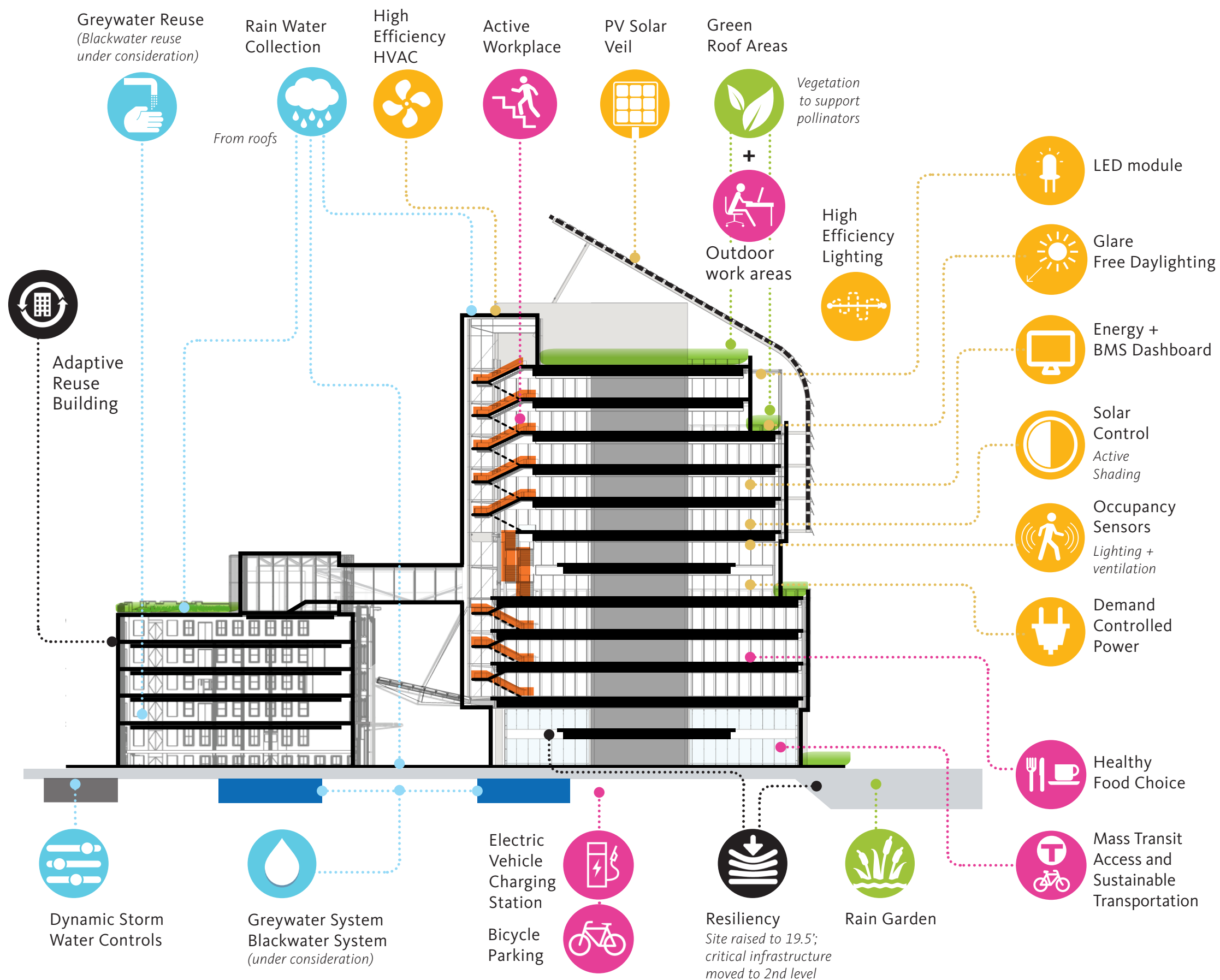
INNOVATION-FOCUSED **CAMPUS**



GE HEADQUARTERS CAMPUS



PRESENTING PERFORMANCE



The new GE HQ will utilize both **active and passive strategies on a building and an urban design scale** that showcase the company's future-forward approach in solving the world's energy challenges. To build a responsive solution that will sustain generations to come, GE is working with the design and delivery team to **create a solution that embodies GE's aspiration for a top of class, sustainable workplace environment.**

WATER

Rain water

Collection from green roof and landscaping
Dynamic storm water controls

Waste water

Greywater reuse for site irrigation + toilets

ENERGY

MEP systems

PV solar array on new building roof
Energy + BMS dashboard
High performance envelope

Workplace

Solar control
Occupancy sensors

GREEN AREAS

Treatment

Native landscaping with bioswales

Health and wellness

Green roof at conference center floor
Roof terrace accessible from cafeteria

Active design

Access to nature
Connecting stairs
Walking paths connecting to Harborwalk
Stand up work stations

BOSTON WHARF CO.
INDUSTRIAL
REAL ESTATE



VIEW FROM NECCO STREET



VIEW FROM WITHIN GE PLAZA



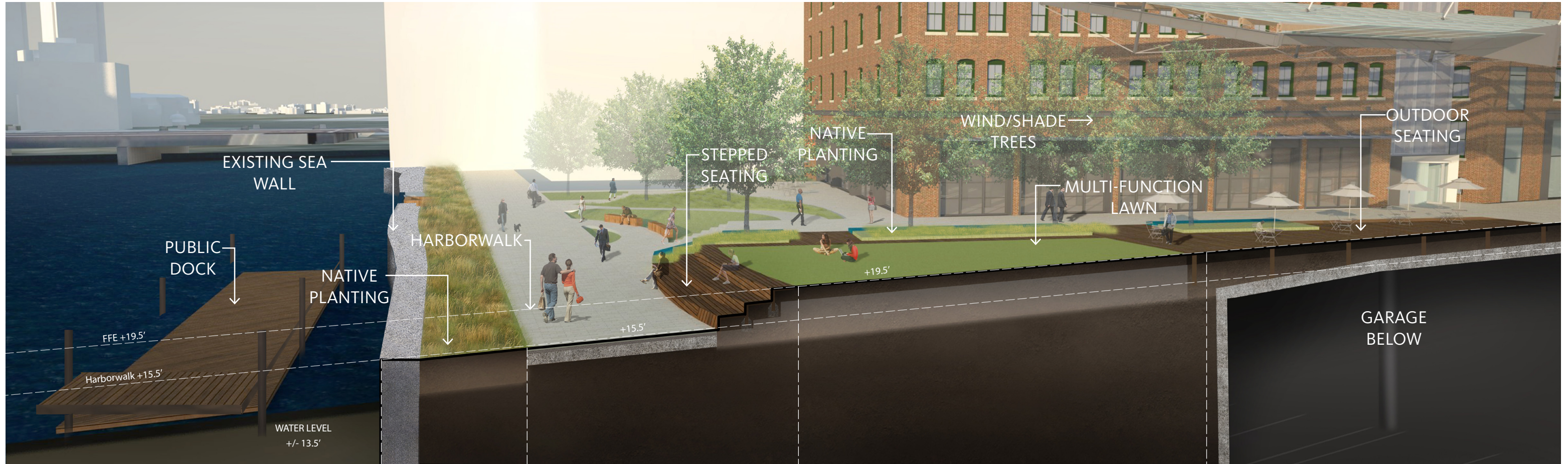
VIEWS FROM THE **HARBOR WALK**



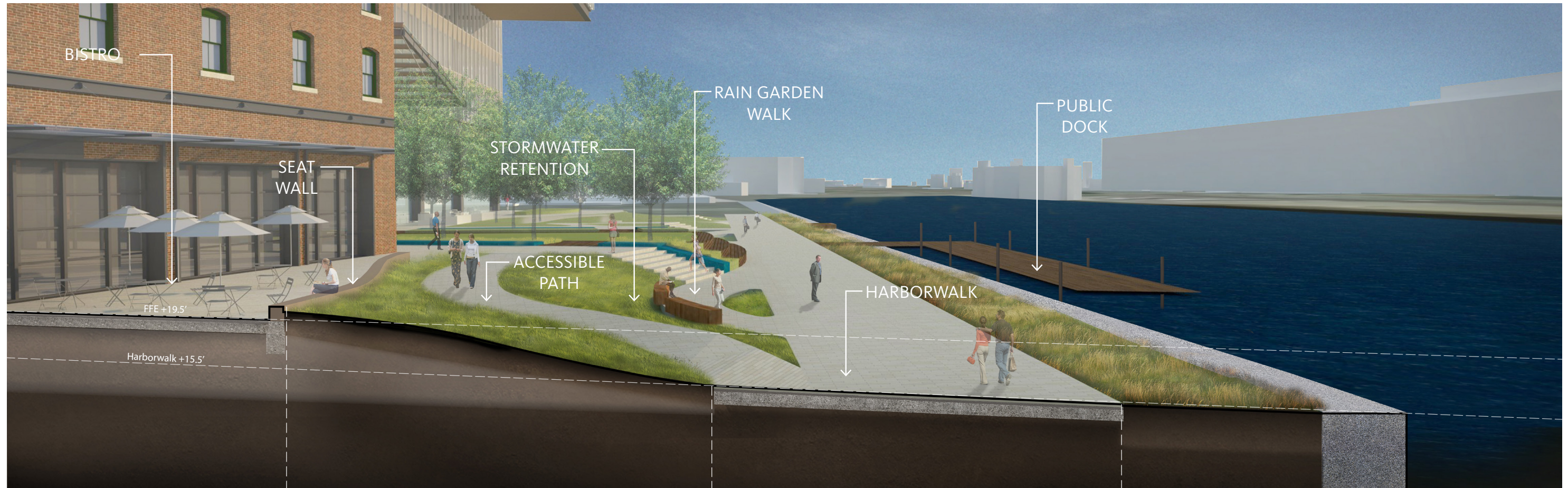
VIEWS FROM THE **HARBOR WALK**



SECTION THROUGH GE PLAZA



SECTION THROUGH HARBOR WALK



THANK YOU!

Connect with us:
Download our GE Boston app
in the App store;
follow us at
@generalelectric
@ge_reports

