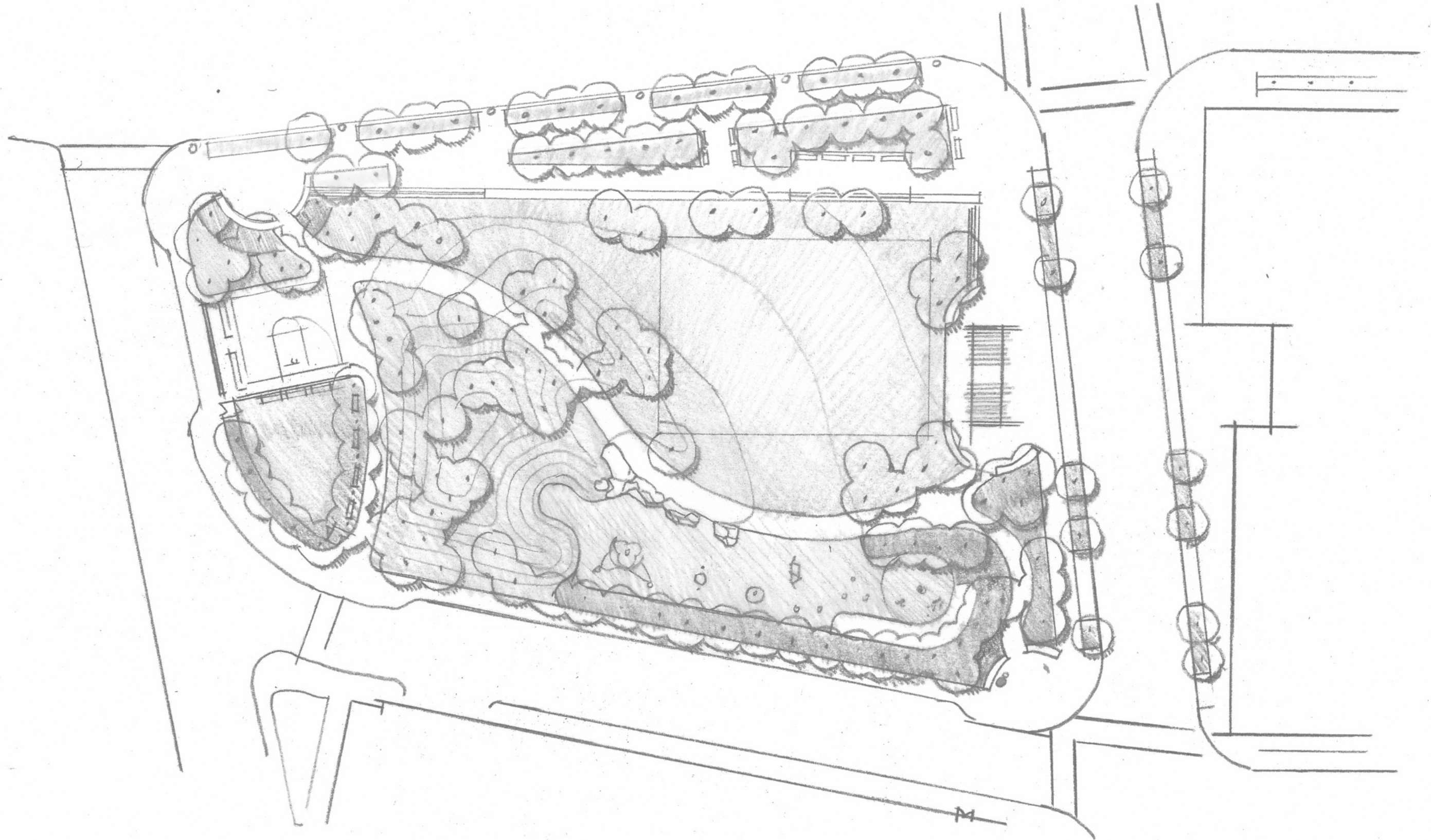


# **CHANNEL CENTER PARK - SITE PLAN PRESENTED 2/26/2013**



# **COMMENT 1 - INCREASE SIZE OF DOG PARK**

**RED = 2,700 SQ. FT. DOG PARK PRESENTED 2/26/2013**

**GREEN = 4,000 SQ. FT. GOAL**



# **COMMENT 1 - INCREASE SIZE OF DOG PARK**

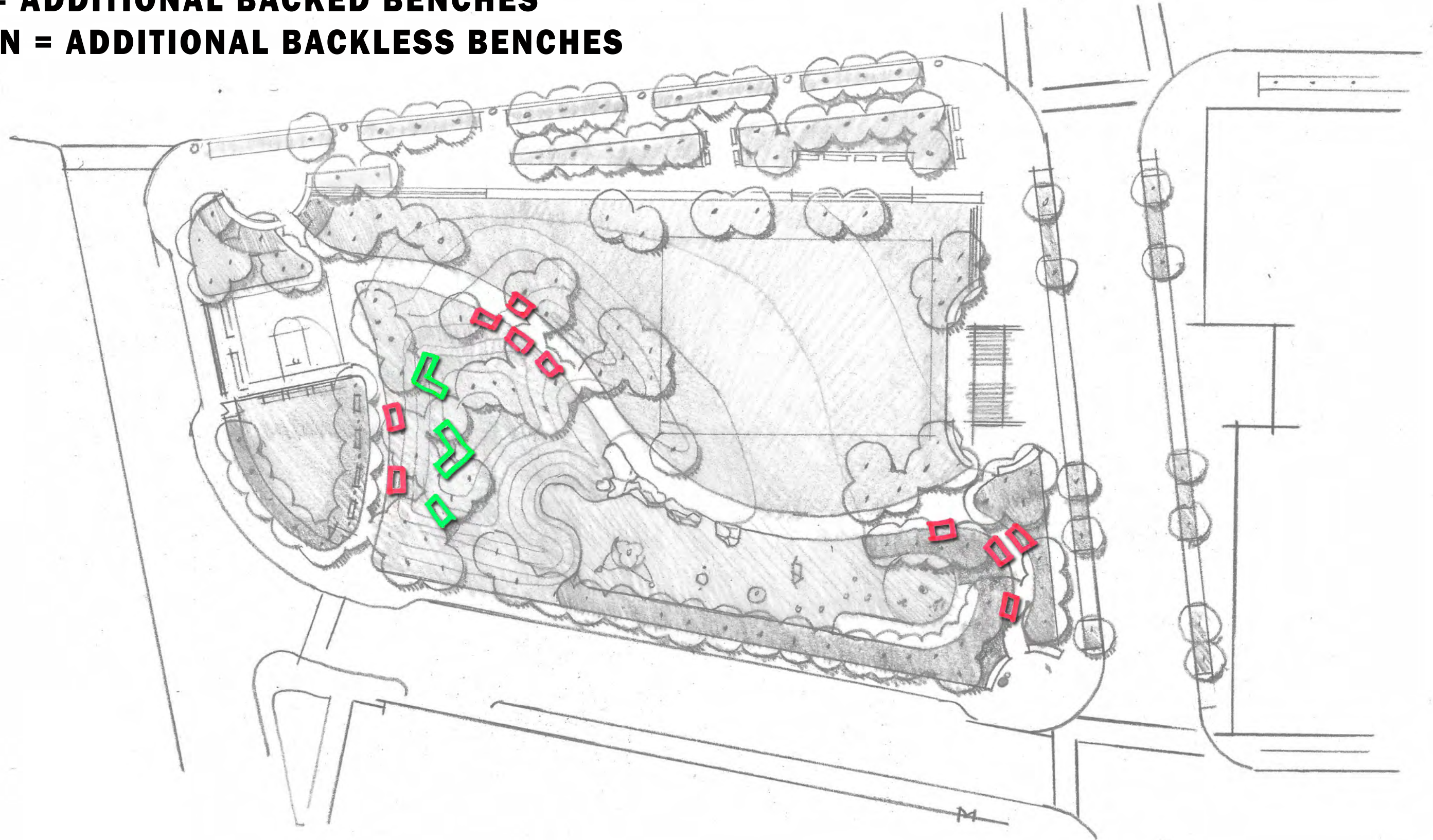
**REVISED SITE PLAN SHOWING  
4,000 SQ. FOOT DOG PARK**



# **COMMENT 2 - PROVIDE ADDITIONAL SEATING THROUGHOUT THE PARK**

**RED = ADDITIONAL BACKED BENCHES**

**GREEN = ADDITIONAL BACKLESS BENCHES**



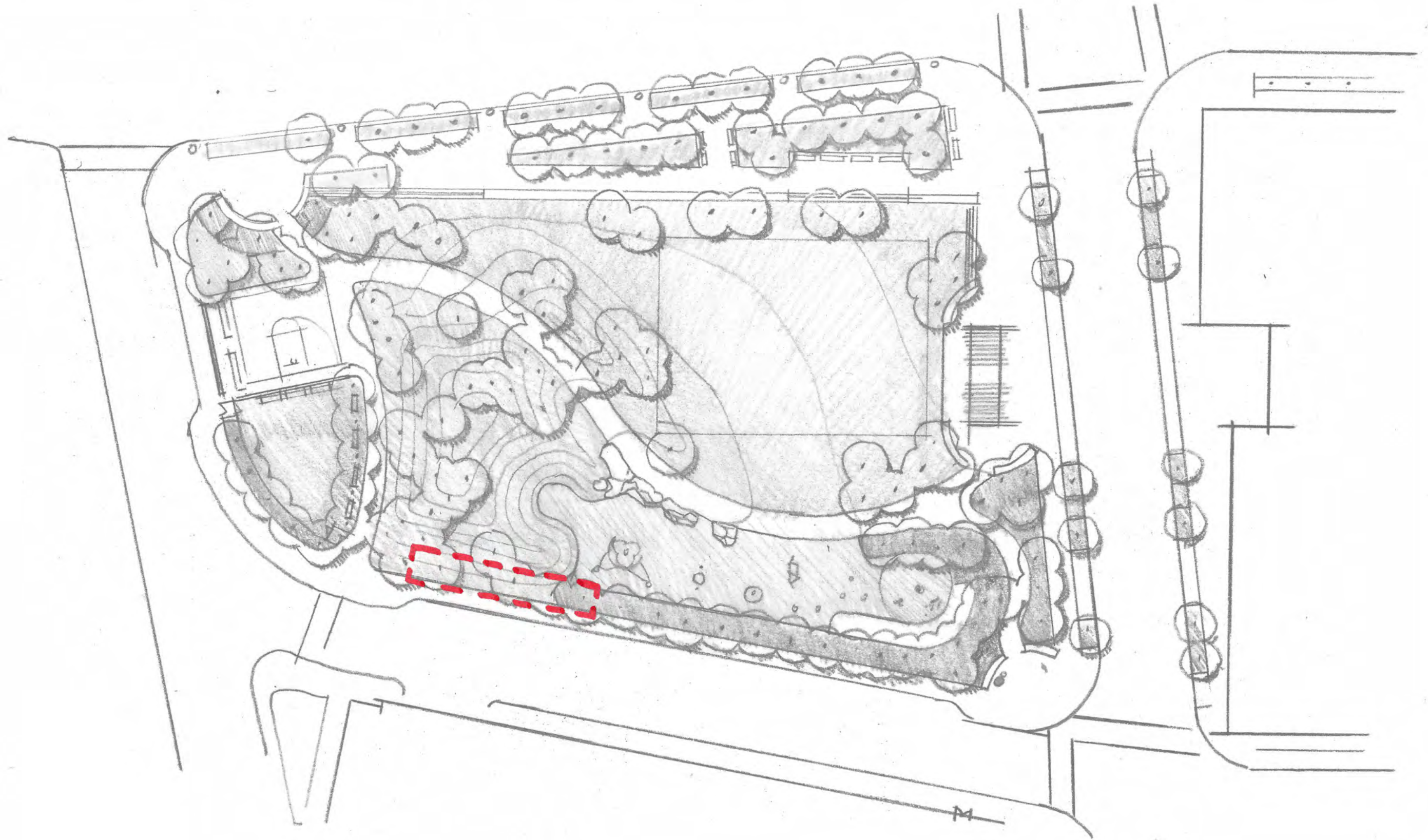
# **COMMENT 3 - INCREASE LANDSCAPE AREA**

**GREEN = ADDED LANDSCAPED AREAS (DECREASED HARDSCAPE)**



# **COMMENT 4 - PROVIDE COMMUNITY GARDEN PLOTS**

**RED = COMMUNITY GARDEN LOCATION**



# **REVISED PLAN INCORPORATING ALL COMMUNITY COMMENTS**

