



Revised Scheme
July 2015



AFFIRMATIVE INVESTMENTS



DiMella
Shaffer
Architecture | Interior Design | Planning

Responsive Design Changes

- Moved building 50' further from Range and Barna Roads
- Reduced building to 2 stories facing Range Road (stepping up to 3 stories)
- Reconfigured apartment parking to face away from Range Road
- Incorporated exterior design comments from neighbors
- Eliminated all 3 BR apartments
- Removed all balconies
- Removed floor-to-ceiling windows facing Range Road
- Removed full glass walls on ground floor facing Dorchester Ave.
- Added numerous plantings and trees throughout lot
- Replaced the chain link fence and Galty Ave. gate

Neighborhood Benefits of Harmon Apartments

- Preserved large open space at TBH
- Improved landscaping along border area
- Provided new fencing and gate
- Removed Cotting Building allowing better views, especially from Alicia Road
- Expanded landscaped border along Barna Road and Galty Ave.
- Improved sidewalk and landscaping along Dorchester Avenue
- Committed to better clear sidewalks along Range Road



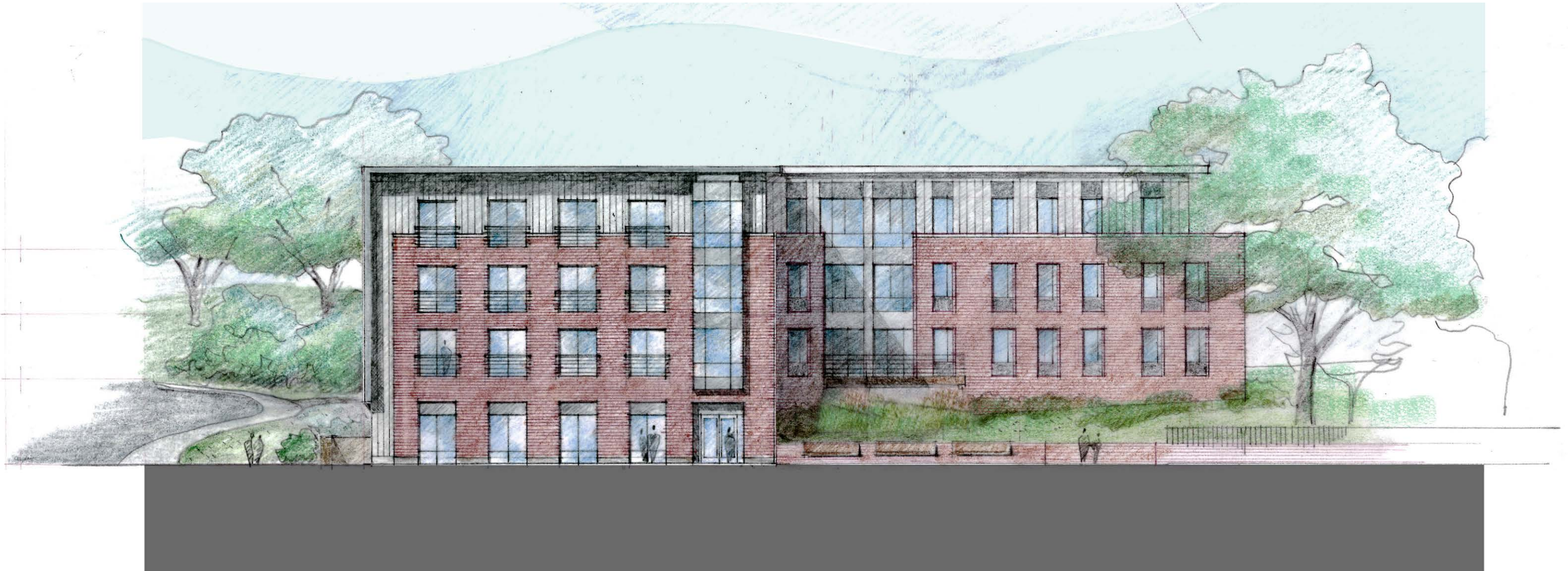


Harmon Apartments

July 2015

Site Plan, Superimposed with Existing

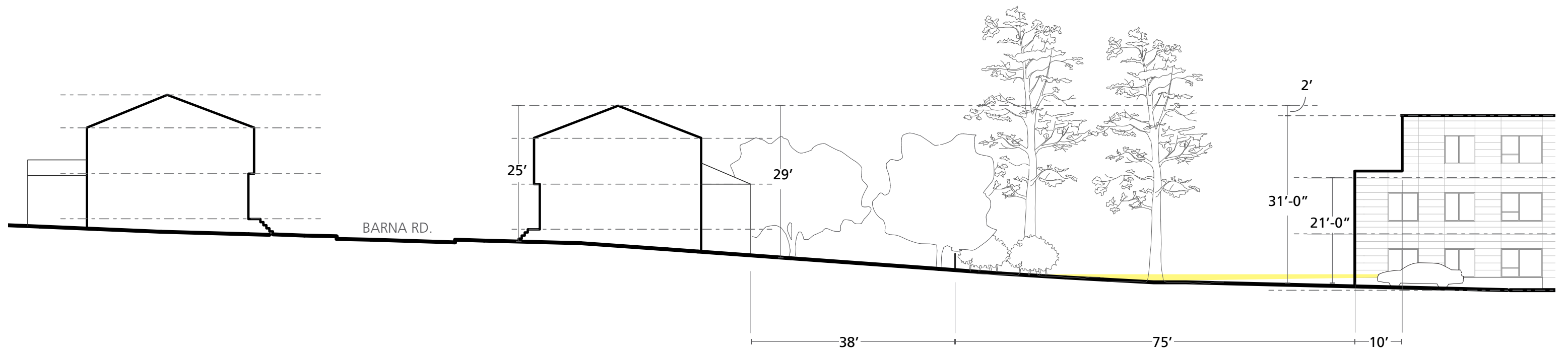




Harmon Apartments

July 2015

Elevation from Dorchester Avenue, 1/16" = 1'



Harmon Apartments

July 2015

Site Section at Range Road



Harmon Apartments

July 2015

View 1, From Range Road, Initial Scheme



Harmon Apartments

July 2015

View 1, From Range Road, Current Scheme



Harmon Apartments

July 2015

View 2, From Dorchester Avenue



Harmon Apartments

July 2015

View 3, From Dorchester Avenue