

463 RUTHERFORD AVENUE

NFA #1333

CHARLESTOWN, MA



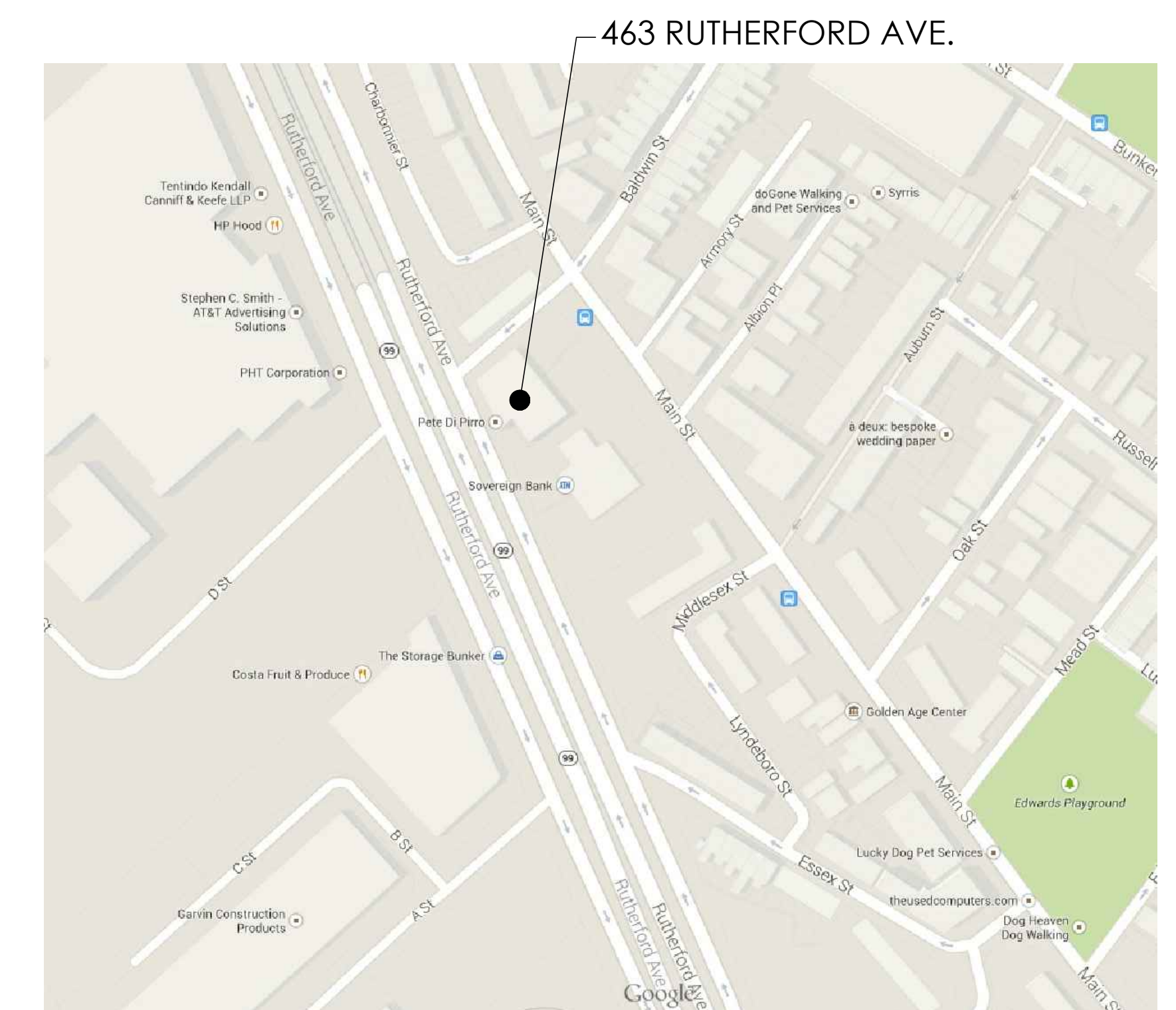
RENDERING IS FOR ILLUSTRATION ONLY

Developer

463 Rutherford Ave. LLC.
 80 Loring Road
 Weston, MA 02493
 Contact: Bruce Daniel, Manager
 Tel: (617) 464-3510
 Email: bruce@brucedaniel.com

Architect

Neshamkin French Architects, Inc.
 5 Monument Square
 Charlestown, MA 02129
 Contact: Jack French
 Tel: (617) 242-7422
 Email: Jwfrench@nfarchitects.com



Drawing List

CS.1 COVER SHEET

ARCHITECTURAL

- A-101 GROUND/GARAGE FLOOR PLAN
- A-102 SECOND FLOOR PLAN
- A-103 THIRD FLOOR PLAN
- A-104 FOURTH FLOOR PLAN
- A-105 ROOF PLAN
- A-301 BUILDING SECTIONS
- A-401 BUILDING ELEVATIONS
- A-402 BUILDING ELEVATIONS

PARKING COUNTS

Parking	#	
Regular	8	
Compact	16	
Handicap	2	
	26	Total Parking

UNIT COUNTS

	UNIT TYPE			
	1-Bed + Den	2-Bed	3-Bed	
Ground Floor	0	0	0	0
Second Floor	1	3	2	6
Third Floor	1	3	2	6
Fourth Floor	1	1	1	3
Total # Units	3	7	5	15

Sheet No.

CS.1

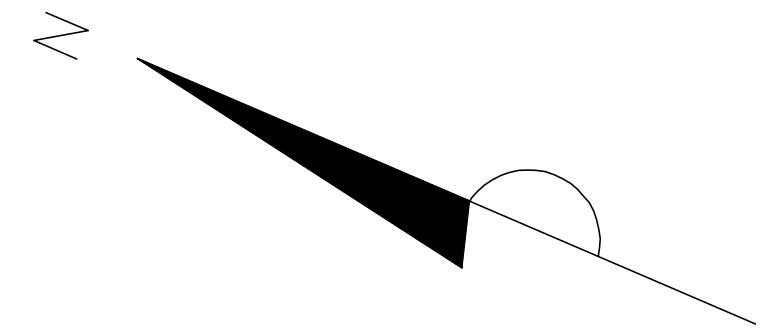
JULY 01, 2014

MAIN STREET

463

RUTHERFORD AVENUE

BOSTON, MA



SOVEREIGN BANK PARKING LOT

SOVEREIGN BANK PARKING LOT



Neshamkin French Architects, Inc.
ARCHITECTS - PRESERVATION PLANNERS/DEVELOPMENT CONSULTANTS
5 Monument Square, Charlestown, MA 02129 617.242.2432
fax 617.242.2434

BALDWIN STREET

TOWNHOUSES

SOVEREIGN BANK

463

RUTHERFORD AVENUE

SOVEREIGN BANK PARKING LOT

GARAGE ENTRANCE

VESTIBULE

BUILDING ENTRANCE

RUTHERFORD AVENUE

Stamped By:

Drawn By:

Checked By:

Date: 12/10/2013

Revisions

1	REVISION 1	4/21/14
2	REVISION 2	5/15/14
3	REVISION 3	6/16/14
4	REVISION 4	6/26/14

Project No. 1333

File Name:

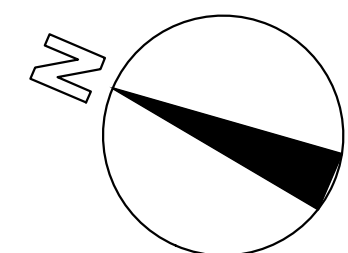
Drawing Title:

SITE PLAN

Sheet No.

A-003

Scale: 3/16" = 1'-0"

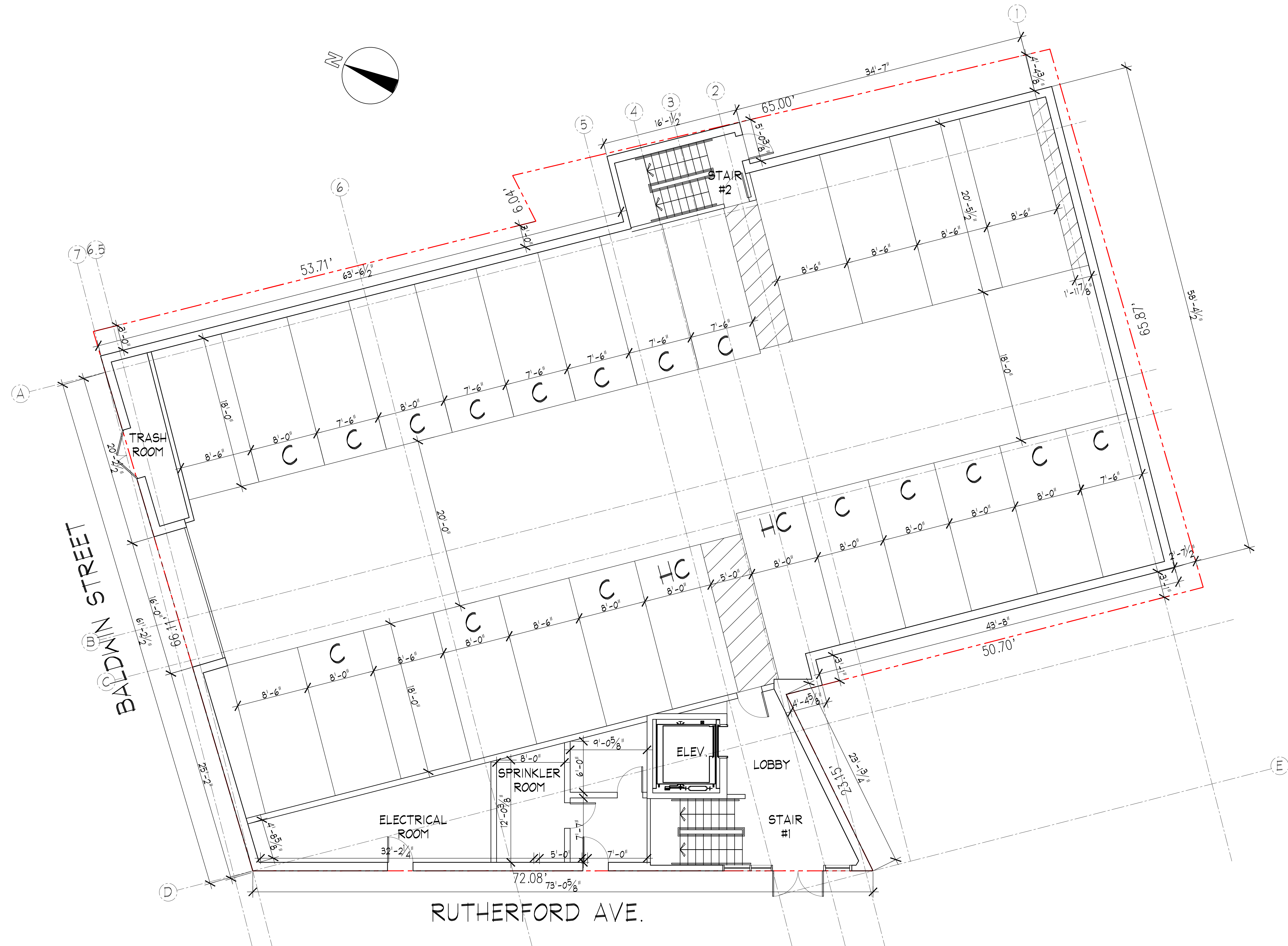


463 RUTHERFORD AVENUE

BOSTON, MA



Neshamkin French Architects, Inc.
ARCHITECTS - PRESERVATION PLANNERS/DEVELOPMENT CONSULTANTS
5 Monument Square, Charlestown, MA 02129



Stamped By:
Drawn By:
Checked By:
Date: **12/10/2013**

Revisions

1	REVISION 1	4/21/14
2	REVISION 2	5/15/14
3	REVISION 3	6/16/14
4	REVISION 4	6/26/14

Project No. **1333**
File Name:
Drawing Title:

**GROUND
FLOOR PLAN**

1 GROUND FLOOR PLAN
3/16" = 1'-0"

Sheet No. **A-101**
Scale: 3/16" = 1'-0"

463

RUTHERFORD AVENUE

BOSTON, MA



Neshamkin French Architects, Inc.
ARCHITECTS • PRESERVATION PLANNERS/DEVELOPMENT CONSULTANTS
3 Monument Square, Charlestown, MA 02129 Tel: 617.242.2822 Fax: 617.242.2824

Stamped By:

Drawn By:

Checked By:

Date: 12/10/2013

Revisions

1	REVISION 1	4/21/14
2	REVISION 2	5/15/14
3	REVISION 3	6/16/14
4	REVISION 4	6/26/14

Project No. 1333

File Name:

Drawing Title:

SECOND FLOOR PLAN

A-102

Sheet No.

Scale: 3/16" = 1'-0"

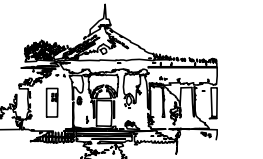


1 SECOND FLOOR PLAN
3/16" = 1'-0"

463

RUTHERFORD AVENUE

BOSTON, MA



Neshamkin French Architects, Inc.
ARCHITECTS - PRESERVATION PLANNERS/DEVELOPMENT CONSULTANTS
5 Monument Square, Charlestown, MA 02129 617.242.2822
fax 617.242.2834



1 THIRD FLOOR PLAN
3/16" = 1'-0"

Stamped By:
Drawn By:
Checked By:
Date: 12/10/2013

Revisions

1	REVISION 1	4/21/14
2	REVISION 2	5/15/14
3	REVISION 3	6/16/14
4	REVISION 4	6/26/14

Project No. 1333
File Name:
Drawing Title:

THIRD FLOOR PLAN

Sheet No. **A-103**
Scale: 3/16" = 1'-0"

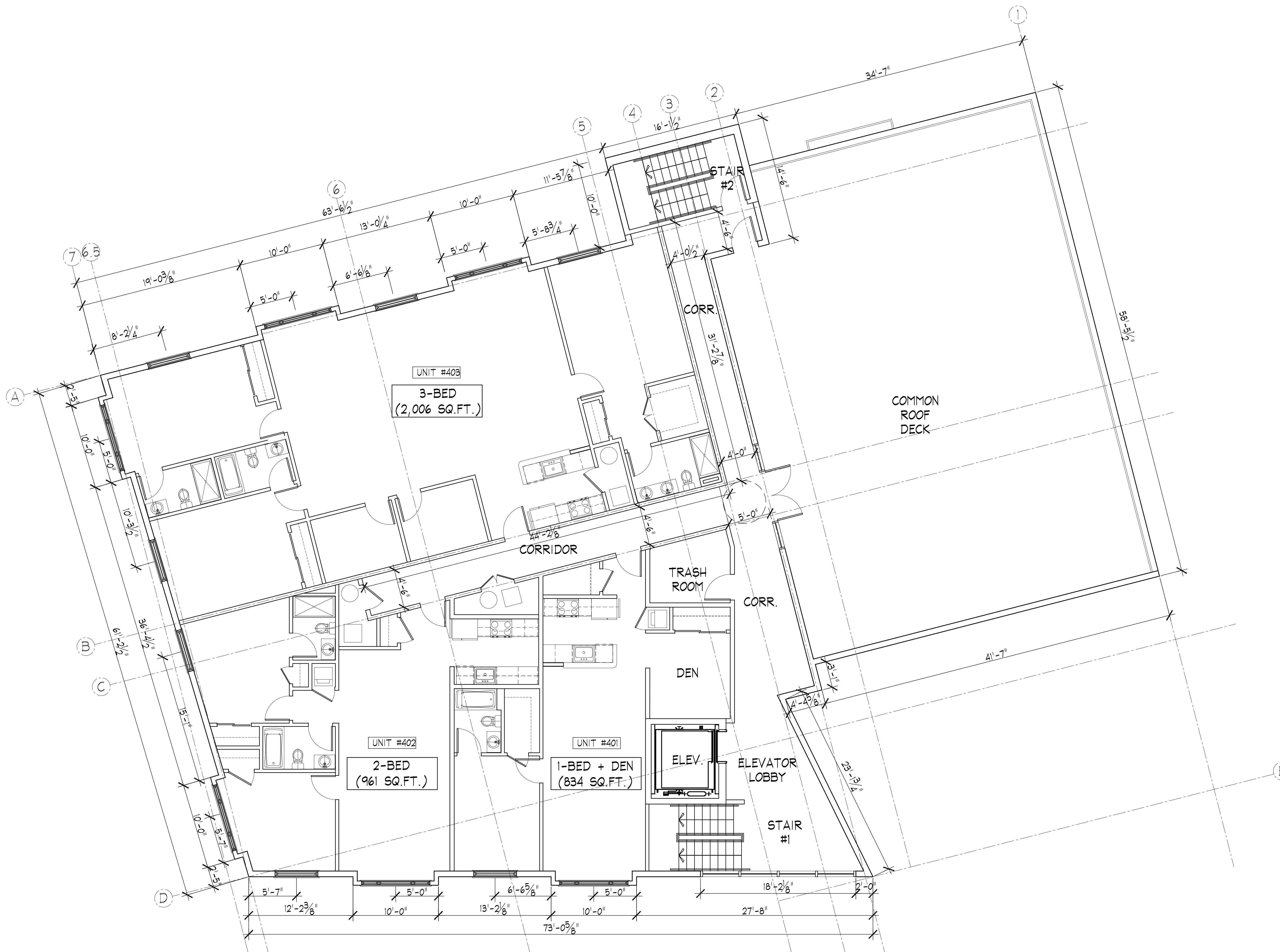
463

RUTHERFORD AVENUE

BOSTON, MA



Neshamkin French Architects, Inc.
ARCHITECTS - PRESERVATION PLANNERS/DEVELOPMENT CONSULTANTS
5 Monument Square, Charlestown, MA 02129 101.912.242.242
fax 617.242.2434



1 FOURTH FLOOR PLAN
3/16" = 1'-0"

Stamped By:

Drawn By:

Checked By:

Date: 12/10/2013

Revisions

NO.	REVISION	DATE
1	REVISION 1	4/21/14
2	REVISION 2	5/15/14
3	REVISION 3	6/16/14
4	REVISION 4	6/26/14

Project No. 1333

File Name:

Drawing Title:

FOURTH FLOOR PLAN

Sheet No. **A-104**

Scale: 3/16" = 1'-0"

463

RUTHERFORD AVENUE

BOSTON, MA



Neshamkin French Architects, Inc.
ARCHITECTS • PRESERVATION PLANNERS/DEVELOPMENT CONSULTANTS
5 Monument Square, Charlestown, MA 02129 Tel: 617.242.2822 Fax: 617.242.2834

Stamped By: _____

Drawn By: _____

Checked By: _____

Date: **12/10/2013**

Revisions

1	REVISION 1	4/21/14
2	REVISION 2	5/15/14
3	REVISION 3	6/16/14
4	REVISION 4	6/26/14

Project No. **1333**

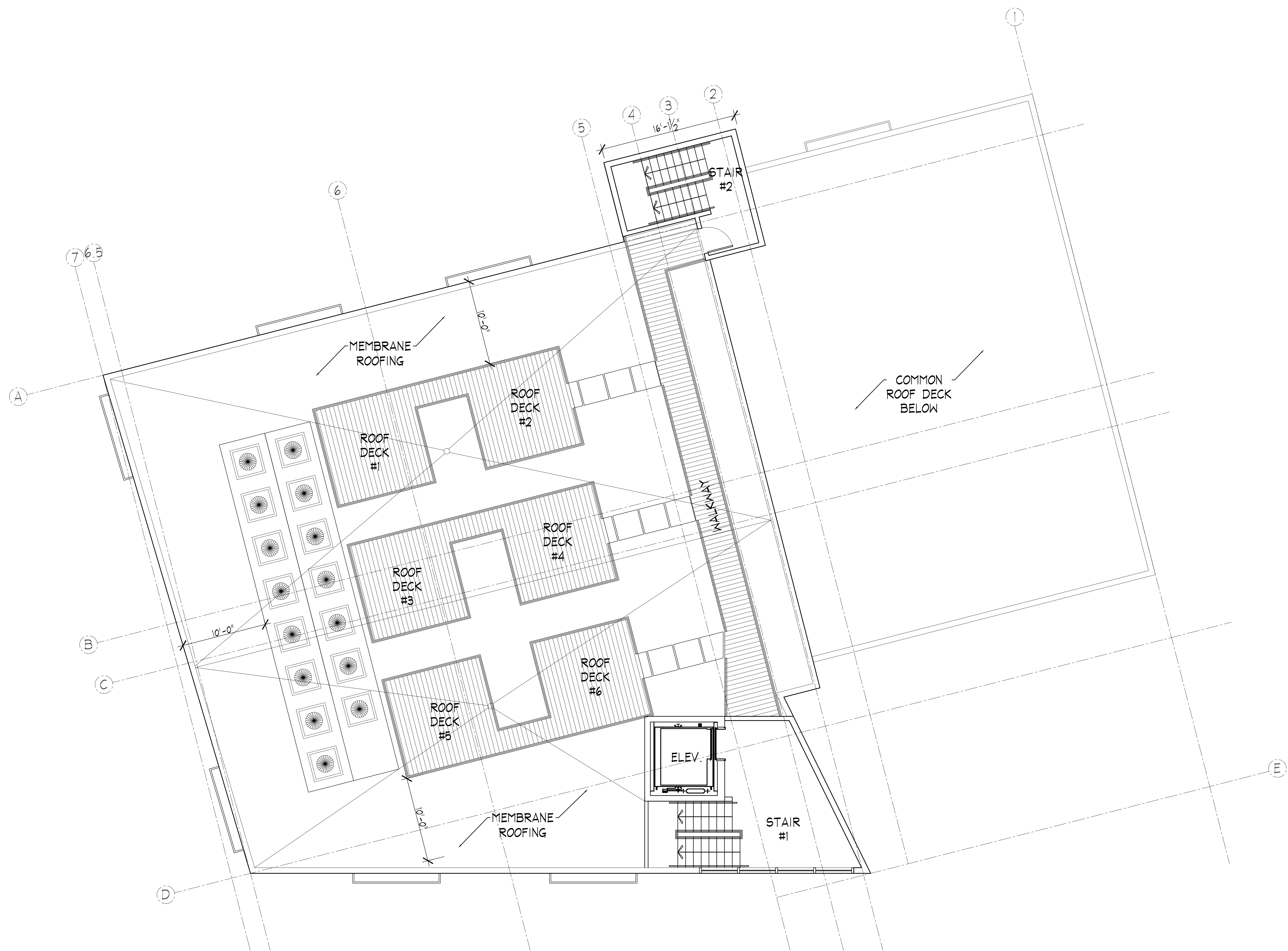
File Name: _____

Drawing Title: _____

ROOF PLAN

Sheet No. **A-105**

Scale: **3/16" = 1'-0"**



1 ROOF FLOOR PLAN
3/16" = 1'-0"

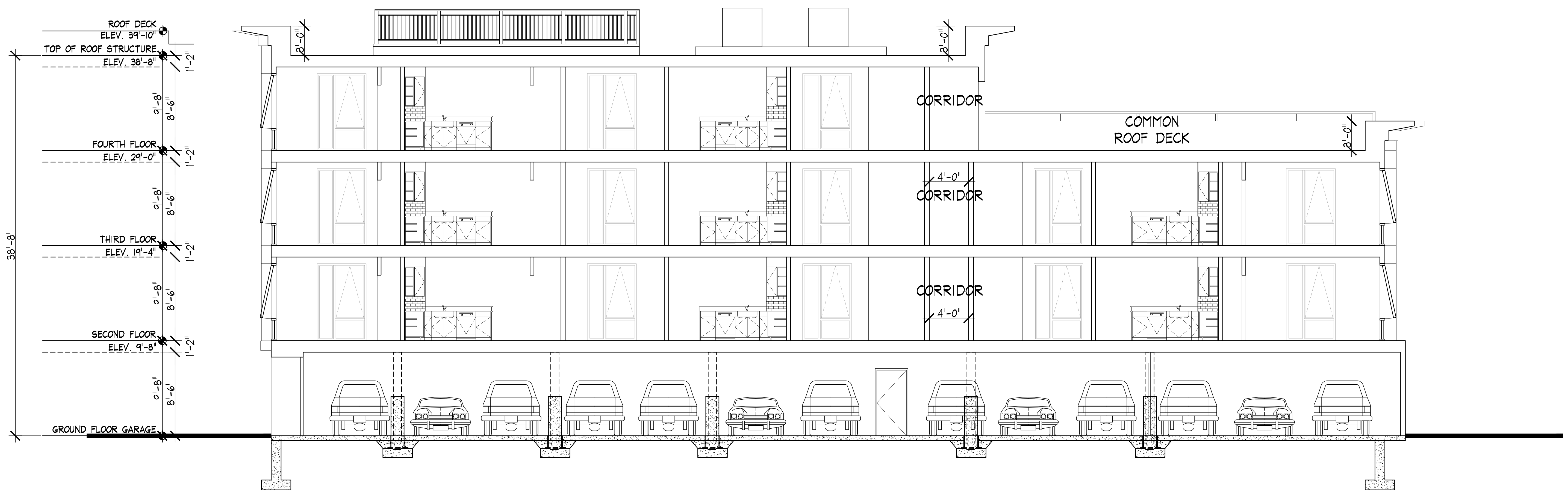
463

RUTHERFORD AVENUE

BOSTON, MA



Neshamkin French Architects, Inc.
ARCHITECTS • PRESERVATION PLANNERS/DEVELOPMENT CONSULTANTS
3 Monument Square, Charlestown, MA 02129 TEL: 617-242-2432 FAX: 617-242-2434



1 BUILDING SECTION
3/16" = 1'-0"

Stamped By:

Drawn By:

Checked By:

Date: 12/10/2013

Revisions

1	REVISION 1	4/21/14
2	REVISION 2	5/15/14
3	REVISION 3	6/16/14
4	REVISION 4	6/26/14

Project No. 1333

File Name:

Drawing Title:

BUILDING SECTION

Sheet No. **A-301**

Scale: 3/16" = 1'-0"

463

RUTHERFORD AVENUE

BOSTON, MA



Neshamkin French Architects, Inc.
ARCHITECTS - PRESERVATION PLANNERS/DEVELOPMENT CONSULTANTS
3 Monument Square, Charlestown, MA 02129 Tel: 617-242-2432 Fax: 617-242-2434



① ELEVATION ON RUTHERFORD AVENUE
3/16" = 1'-0"



② ELEVATION ON BALDWIN STREET
3/16" = 1'-0"

Stamped By: _____

Drawn By: _____

Checked By: _____

Date: 12/10/2013

Revisions	
1 REVISION 1	4/21/14
2 REVISION 2	5/15/14
3 REVISION 3	6/16/14
4 REVISION 4	6/26/14

Project No. 1333

File Name: _____

Drawing Title: _____

EXTERIOR ELEVATIONS

A-401

Sheet No.

Scale: 3/16" = 1'-0"

463

RUTHERFORD AVENUE

BOSTON, MA



Neshamkin French Architects, Inc.
ARCHITECTS - PRESERVATION PLANNERS/DEVELOPMENT CONSULTANTS
5 Monument Square, Boston, MA 02129
Tel: 617.242.2832 Fax: 617.242.2834



1 ELEVATION FACING SOVEREIGN BANK
3/16" = 1'-0"



2 ELEVATION FACING MAIN STREET
3/16" = 1'-0"

Stamped By:

Drawn By:

Checked By:

Date: 12/10/2013

Revisions

1	REVISION 1	4/21/14
2	REVISION 2	5/15/14
3	REVISION 3	6/16/14
4	REVISION 4	6/26/14

Project No. 1333

File Name:

Drawing Title:

EXTERIOR ELEVATIONS

A-402

Sheet No.

Scale: 3/16" = 1'-0"



Neshamkin French Architects, Inc.
ARCHITECTS PRESERVATION PLANNERS DEVELOPMENT CONSULTANTS
5 Monument Square tel. 617.242.7422
Charlestown, MA, 02129 fax 617.242.7424

463 RUTHERFORD AVENUE

CHARLESTOWN, MA

RENDERING

JUNE 16, 2014